

INTER-GOVERNMENTAL MARITIME  
CONSULTATIVE ORGANIZATION

101-104 PICCADILLY,  
LONDON, W1V 0AE

Telegrams: INMARCOR-LONDON, W.1  
Telephone: 01-499 9040



**IMCO**

SN/Circ. 71  
8 October 1974

RECEIVED  
U.S. COAST GUARD

OCT 31 1974

Washington, D.C.  
GAIA

Ref. T2/2.07

**TRAFFIC SEPARATION SCHEME IN THE APPROACHES  
TO RAS TANURA AND JU'AYMAH**

1. The Sub-Committee on Safety of Navigation at its sixteenth session examined a proposal by the Kingdom of Saudi Arabia concerning an amendment to the Ras Tanura Scheme. The Scheme which the Sub-Committee recommended for approval, entitled "In the Approaches to Ras Tanura and Ju'aymah" will be submitted to the thirty-second session of the Maritime Safety Committee for approval.
2. In view of the urgency to introduce the Scheme and taking into account Resolution A.284(VIII), Annex I, paragraph 5(b) relating to schemes lying partly within territorial waters, the Kingdom of Saudi Arabia was advised to promulgate the Scheme by the appropriate means as early as practicable prior to its implementation and pending its final adoption by the Assembly.
3. The Kingdom of Saudi Arabia has now informed the Secretariat that it has implemented the revised Scheme, which is attached hereto, on 1 October 1974.

ANNEX II

## ROUTEING MEASURES

APPENDIX I

In the approaches to Ras Tanura and Ju'aymah

(Reference charts: British Admiralty 3788  
United States Naval Oceanographic Office 62415)

Description of the traffic separation schemePart I. Ras Tanura Approach

(a) A separation zone bounded by a line connecting the following geographical positions:

- |     |              |             |
|-----|--------------|-------------|
| (1) | 27°06'50"N., | 50°42'00"E. |
| (2) | 27°06'06"N., | 50°23'18"E. |
| (3) | 26°58'00"N., | 50°14'00"E. |
| (4) | 26°57'30"N., | 50°14'36"E. |
| (5) | 27°05'16"N., | 50°23'30"E. |
| (6) | 27°06'08"N., | 50°42'05"E. |

(b) A separation line connects the following geographical positions:

- |     |              |             |
|-----|--------------|-------------|
| (7) | 26°57'45"N., | 50°14'12"E. |
| (8) | 26°56'12"N., | 50°12'36"E. |

(c) A separation zone bounded by a line connecting the following geographical positions:

- |      |              |             |
|------|--------------|-------------|
| (9)  | 26°56'00"N., | 50°11'51"E. |
| (10) | 26°49'18"N., | 50°10'26"E. |
| (11) | 26°51'09"N., | 50°11'17"E. |
| (12) | 26°55'33"N., | 50°12'23"E. |

(d) A separation line connects the following geographical positions:

- |      |              |             |
|------|--------------|-------------|
| (13) | 26°49'18"N., | 50°10'26"E. |
| (14) | 26°48'19"N., | 50°10'15"E. |
| (15) | 26°45'12"N., | 50°11'09"E. |
| (16) | 26°44'26"N., | 50°11'28"E. |
| (17) | 26°43'00"N., | 50°11'53"E. |
| (18) | 26°41'56"N., | 50°12'14"E. |
| (19) | 26°41'01"N., | 50°12'08"E. |
| (20) | 26°40'52"N., | 50°12'06"E. |

(e) A traffic lane for traffic bound for Ras Tanura is established between the separation zones/lines and a line connecting the following geographical positions:

- |      |              |             |
|------|--------------|-------------|
| (21) | 27°07'16"N., | 50°42'00"E. |
| (22) | 27°06'28"N., | 50°23'00"E. |
| (23) | 26°56'21"N., | 50°11'29"E. |
| (24) | 26°49'32"N., | 50°09'50"E. |
| (25) | 26°48'02"N., | 50°09'52"E. |
| (26) | 26°42'02"N., | 50°11'42"E. |
| (27) | 26°40'52"N., | 50°11'44"E. |

(f) A traffic lane for traffic departing from Ras Tanura is established between the separation zones/lines and a line connecting the following geographical positions:

- |      |              |             |
|------|--------------|-------------|
| (28) | 26°40'52"N., | 50°12'16"E. |
| (29) | 26°41'00"N., | 50°12'18"E. |
| (30) | 26°41'57"N., | 50°12'24"E. |
| (31) | 26°42'25"N., | 50°12'22"E. |
| (32) | 26°43'07"N., | 50°12'07"E. |
| (33) | 26°44'17"N., | 50°11'42"E. |
| (34) | 26°47'23"N., | 50°10'57"E. |
| (35) | 26°49'16"N., | 50°10'42"E. |
| (36) | 26°50'54"N., | 50°11'36"E. |
| (37) | 26°55'07"N., | 50°13'02"E. |
| (38) | 26°55'32"N., | 50°13'08"E. |
| (39) | 27°04'51"N., | 50°23'52"E. |
| (40) | 27°05'34"N., | 50°42'06"E. |

Part II. Ju'aymah Approach

(g) A traffic lane, two miles wide, for traffic bound for Ju'aymah is centred upon the following geographical positions:

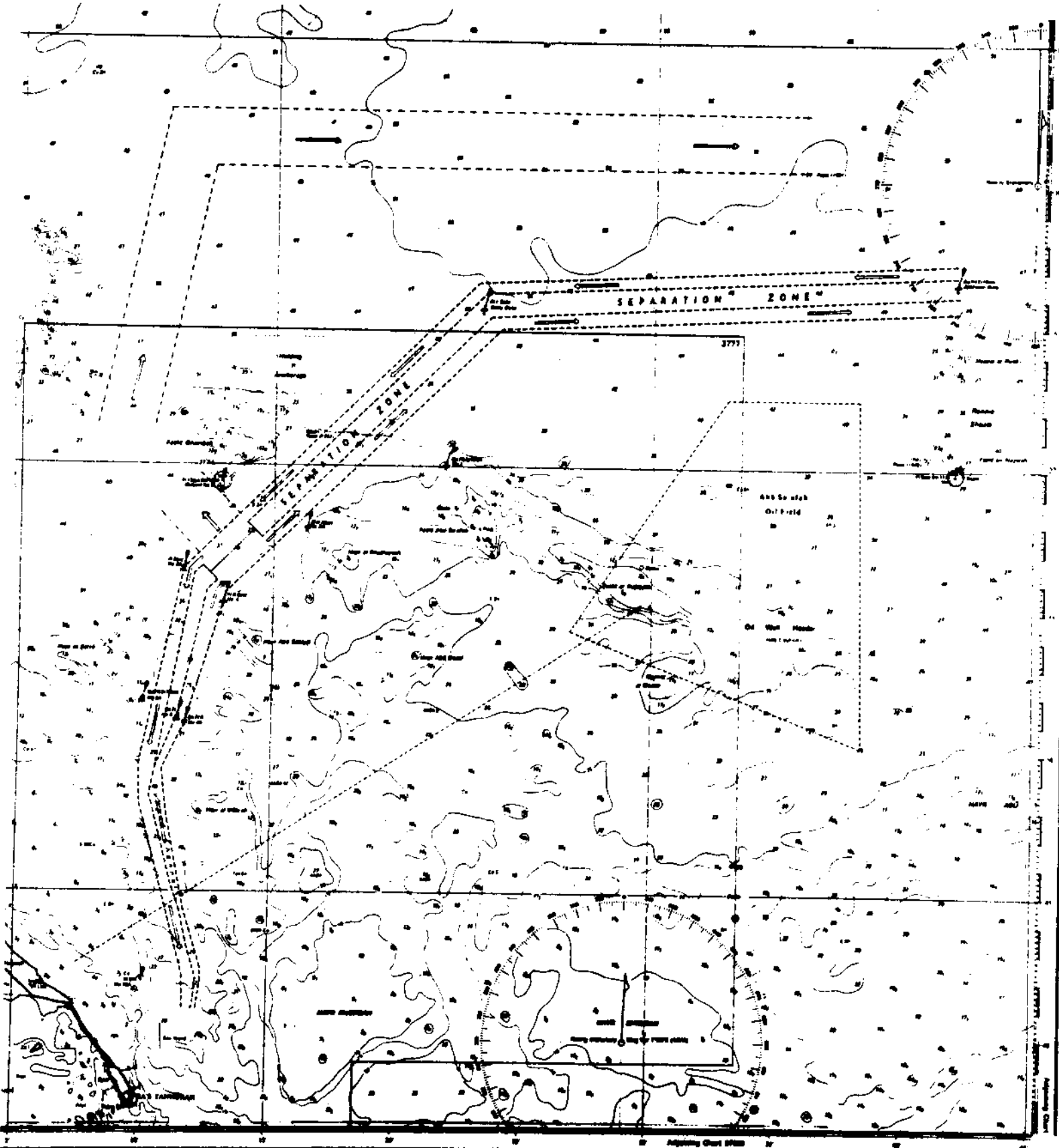
- |      |              |             |
|------|--------------|-------------|
| (41) | 26°57'36"N., | 50°12'48"E. |
| (42) | 26°59'00"N., | 50°11'18"E. |

Part III. Ju'aymah Departure

(h) A traffic lane, two miles wide, for traffic departing from Ju'aymah is centred upon the following geographical positions:

- |      |              |             |
|------|--------------|-------------|
| (43) | 27°01'24"N., | 50°09'12"E. |
| (44) | 27°11'30"N., | 50°11'45"E. |
| (45) | 27°11'30"N., | 50°36'00"E. |

TRAFFIC SEPARATION SCHEME IN THE APPROACHES TO  
RAS TANURA AND JU'AYMAH



Published at London on 1st January 1978 under the Supervision of the Hydrographer of the Admiralty, G. P. D. N. C. A. D. C., Hydrographer of the Navy.  
© Crown Copyright 1978

DEPTH