



U.S. Department  
of Homeland Security  
**United States  
Coast Guard**

---

## LOCAL NOTICE TO MARINERS

**District: 11**

**Week: 44/24**

CORRESPONDENCE TO:  
COMMANDER  
DISTRICT ELEVEN (DPW)  
COAST GUARD ISLAND BUILDING 50-2  
ALAMEDA, CA 94501-5100

REFERENCES: COMDTPUB P16502.6, Light List Volume VI, 2017 Edition, U.S. Chart No.1 12th Edition, and Coast Pilot Volume 7 49th Edition. These publications, along with corrections, are available at: <https://nauticalcharts.noaa.gov/>

BROADCAST NOTICE TO MARINERS - Information concerning aids to navigation and waterway management promulgated through BNM HB-0015-24, SF-0148-24, LA-0208-24, and SD-0051-24 have been incorporated in this notice, or will continue if still significant.

---

### SECTION I - SPECIAL NOTICES

This section contains information of special concern to the Mariner.

#### BRIDGE INFORMATION- PROJECTS, DISCREPANCIES, CORRECTIONS & REGULATORY

For all bridge related issues, including lighting, operation, obstructions, construction, demolition, etc. contact the Eleventh Coast Guard District Bridge Administrator 24 hour cell phone at 510-219-4366. Flotsam may accumulate on and near bridge piers and abutments. Mariners should approach all bridges with caution. A vessel delay at a drawbridge may be reported to the District Bridge Administrator by telephone, or by using the Delay\_Report\_11-2017.pdf included in the Enclosures section of this Local Notice to Mariners.

#### BRIDGE INFORMATION-COMMUNICATIONS PROTOCOL-BENICIA/MARTINEZ UPRR BRIDGE- CARQUINEZ STRAIT

All mariners requiring a bridge lift at the Benicia-Martinez Union Pacific Railroad Bridge, mile 7.0, over the Carquinez Strait, California, should follow the protocol in the document entitled "Coordination of Communications for Union Pacific Railroad Lift Operations." Mariners can download a copy of the document by selecting the link BENICIA-MARTINEZ RR BRIDGE under the QUICK LINKS section at <https://www.pacificarea.uscg.mil/vtssf>.

#### CAUTION TO BE USED IN RELIANCE UPON AIDS TO NAVIGATION

The aids to navigation depicted on charts comprise a system of fixed and floating aids to navigation with varying degrees of reliability. Prudent mariners will not rely solely on any single aid to navigation, particularly a floating aid to navigation. With respect to buoys, the buoy symbol is used to indicate the approximate position of the buoy body and the sinker which secures the buoy to the seabed. The approximate position is used because of the practical limitations in positioning and maintaining buoys and their sinkers in precise geographical locations. These limitations include, but are not limited to, inherent imprecision in position fixing methods, prevailing atmospheric and sea conditions, slope of and the material making up the seabed, the fact that buoys are moored to sinkers by varying length of chain, and the fact that the buoy body and/or sinker positions are not under continuous surveillance, but are normally checked only during periodic maintenance visits which often occur more than a year apart. Due to the forces of nature, the position of the buoy body can be expected to shift inside and outside the charted symbol. The mariner is also cautioned that buoys may be extinguished or sound signals may not function as the result of natural causes, collisions, or other accidents. For the foregoing reasons, a prudent mariner must not rely completely upon the position or operation of floating aids to navigation, but will also utilize bearings from fixed objects and aids to navigation on shore. Furthermore, a vessel attempting to pass close aboard always risks collision with a yawing buoy or with the obstruction that the buoy marks.

#### NOTICE: CHANGES TO THE USCG LOCAL NOTICE TO MARINERS (LNM) AND LIGHT LISTS

The U.S. Coast Guard Navigation Center announces upcoming changes to the Local Notice to Mariners (LNM) and the Light List, as part of our efforts to modernize and improve the accessibility, accuracy, and overall user experience for mariners and other stakeholders.

What Is Changing?

1. Transition From Paper Charts: In January 2025, NOAA will discontinue the production of all paper charts. In alignment with this change, the Coast Guard will transition from using NOAA Paper Chart Numbers and Editions/Dates for disseminating Marine Safety Information (MSI) to using Official Waterway Names.
2. How You Will Access LNM and Light Lists: The LNM and Light List data will now be available in a geospatial format, which will allow you to visualize information interactively on a map/chart. You can use your mouse wheel or the +/- buttons in the upper left portion of the screen to zoom in or out and navigate to your desired area on the map/chart. Once the area is displayed, you can generate a PDF of the LNM or Light List for that specific area, which you can then save and/or print. Alternatively, you can use a fillable form on our website to select your waterway by name from the Light List and generate the LNM or Light List.
3. LNM and Light List Data Refresh Rate: LNM data will be refreshed every fifteen minutes. Light List data will be refreshed every 24 hours. This

will give you a much more up-to-date operating picture, designed to enhance your efficiency and improve safety in your area of transit or planned routes.

4. Elimination of Weekly Files: Weekly LNMs, Weekly Light List Correction Files, Daily Discrepancy Files, and the Summary of Light List Changes will no longer be published to focus on providing the most up-to-date and accessible format. In the near future, we will also publish an Application Programming Interface (API) for interested parties to access the data externally.

Why Are These Changes Being Made?

The modernization of MSI delivery is designed to improve the U.S. Coast Guard's aid-to navigation data management and dissemination capabilities. By providing frequent updates, geospatial visualization, and digital access, we hope to achieve our goals of:

- **Enhancing Maritime Safety:** By delivering the most current and precise information, mariners can make better-informed decisions, reducing the risk of accidents and ensuring safer navigation.
- **Improving Accessibility:** The shift to geospatial visualization makes it easier for all users, from commercial mariners to recreational boaters, to stay informed.
- **Increasing Efficiency:** The integration of LNM and Light List data into a geospatial format to simplify the gathering of safety information and facilitate easy route planning.

When Will These Changes Take Effect?

The transition to the modernized LNM and Light List platform (the Navigation Center website) will be completed by Friday, November 1st.

How to Access the New Features?

Starting on November 1st, 2024, you will be able to access the updated LNM and Light List through the NAVCEN website. A User Guide will be available on the NAVCEN website. Customers will still have the ability to download legacy versions of these products until November 1st.

For any questions or assistance, please visit our Contact Us Page, select 'LNMs or Light Lists' from the Subject dropdown, and submit your inquiry. Thank you for your continued support as we work to improve the safety and efficiency of maritime navigation. U.S. Coast Guard Navigation Center ([www.navcen.uscg.gov](http://www.navcen.uscg.gov)).

LNM: 43/24

#### **SAFETY NOTICE - NAVIGATIONAL RANGE AND SECTOR LIGHTS ON ELECTRONIC CHARTS**

"The U.S. Coast Guard has become aware that the Range and Sector Light Characteristic labels are not displayed on Electronic Navigational Charts (ENCs) when used in an Electronic Chart Display and Information System (ECDIS) due to limitations of the S-52 ECDIS display specification. Mariners may query the ENC data directly within ECDIS or refer to the Light List for complete information on Range and Sector Light Characteristics."

LNM: 39/22

#### **SUBMITTING INFORMATION FOR PUBLICATION IN THE LOCAL NOTICE TO MARINERS**

Coast Guard District Eleven Waterways upgrade to E-Mail capabilities. All future requests for article submission in the District Eleven Local Notice to Mariners are requested to be E-Mailed to [D11-SMB-SMB-D11-LNM@uscg.mil](mailto:D11-SMB-SMB-D11-LNM@uscg.mil) at least two weeks prior to the operation. For more details or comments please contact District Eleven Waterways Management Branch at 510-437-2929 or e-mail [D11-SMB-D11-LNM@uscg.mil](mailto:D11-SMB-D11-LNM@uscg.mil). Coast Guard District Eleven requests all Local Notice to Mariners submissions be E-Mailed to our office at least 14 days prior to the start of operations for timely submittal and publication.

LNM: 17/21

---



---

## **SECTION II - DISCREPANCIES**

This section lists all reported and corrected discrepancies related to Aids to Navigation in this edition. A discrepancy is a change in the status of an aid to navigation that differs from what is published or charted.

---

### **DISCREPANCIES (FEDERAL AIDS)**

LLNR	Aid Name	Status	Chart No.	BNM Ref.	LNM St	LNM End
45	Oceanside South Jetty Light 2	SS IMCH	18740		40/24	
181	NOAA Environmental Lighted Buoy 46025	LT EXT	18720		39/24	
240	Morro Bay West Breakwater Light	SS INOP	18700	LA-0018-24	04/24	
297	NOAA Environmental Lighted Buoy 46042	MISSING	18680	SF-0180-23	49/23	
330	Pillar Point Harbor Approach Lighted Buoy PP	TMK MISSING	18680	SF-0081-23	17/23	
360	San Francisco Approach Lighted Whistle Buoy SF	RAC INOP	18640	SF-0040-22	17/22	
382	NOAA Environmental Lighted Buoy 46059	ADRIFT		SF-0103-24	29/24	
385	Point Reyes Light	REDUCED INT	18640		43/24	
490	Humboldt Bay Entrance Lighted Whistle Buoy HB	REDUCED INT	18620	HB-0013-23	46/23	
1535	Zuniga Jetty Light W	STRUCT DEST		SD-0038-23	26/23	

1619	San Diego North Island Shallow Water Habitat Light D	STRUCT DEST		SD-0016-24	05/24
2295	Oceanside Breakwater Light 1	LT EXT/STRUCT DMGD		SD-0038-24	09/24
2296	Oceanside South Jetty Light 2	SS IMCH	18740		40/24
<b>2445</b>	<b>Newport Bay East Jetty Light 4</b>	<b>LT EXT</b>	<b>18740</b>		<b>44/24</b>
2635	Ship Rock Light	LT EXT	18740	LA-0095-21	26/21
2641	Isthmus Cove Harbor Reefs Light	STRUCT DMGD	18740	LA-0018-21	05/21
2670	Santa Catalina Island West End Light	LT EXT	18740	LA-0113-19	34/19
2810	Anaheim Bay Channel Buoy 7	OFF STA		LA-0062-22	30/22
3330	Redondo Beach West Jetty Light 3	STRUCT DEST	18740	LA-0021-23	09/23
<b>3445</b>	<b>Marina Del Rey Breakwater South Light 1</b>	<b>LT EXT</b>	<b>18740</b>		<b>44/24</b>
3835	Morro Bay West Breakwater Light	SS INOP	18700	LA-0018-24	04/24
3850	Morro Bay Channel Lighted Buoy 3	LT EXT		LA-0138-24	30/24
3850	Morro Bay Channel Lighted Buoy 3	LT EXT/OFF STATION			29/24
3850	Morro Bay Channel Lighted Buoy 3	OFF STATION			42/24
4125	Southeast Reef Southern End Lighted Gong Buoy 15	SS INOP	18680	SF-0004-24	20/24
4130	Pillar Point Harbor Entrance Lighted Gong Buoy 1	SS INOP/STRUCT DMGD	18680	SF-0082-23	17/23
4200	Drakes Bay Lighted Whistle Buoy 1	LT EXT	18680	SF-0112-24	35/24
4315	Alcatraz Light	LT EXT			40/24
4385	Sausalito Channel Light 2	STRUCT DMGD/TRLB			41/24
4610	Oakland Outer Harbor Range B Front Light	DAYMK MISSING		SF-0070-23	14/23
4625	Oakland Outer Harbor Range A Rear Light	STRUCT DEST/TRLB		SF-0032-24	10/24
4655	Oakland Outer Harbor Light 13	MISSING/TRLB		SF-0067-23	14/23
4680	Oakland Inner Harbor Light 10	MISSING/TRLB		SF-0052-21	02/22
4684	Oakland Inner Harbor Turn Basin Light B	STRUCT DMGD/TRLB		SF-0097-21	29/21
4740	San Leandro Bay Airport Channel Daybeacon 6	STRUCT DEST/TRUB		SF-0033-22	15/22
4830	San Leandro Marina Channel Light 1	LT EXT/SS INOP		SF-0012-23	02/23
5225	Redwood Creek Light 11	STRUCT DEST/TRLB		SF-0148-23	41/23
5430	Berkeley Marina Channel Light 2	LT EXT		SF-0086-22	40/22
5685	Richmond Harbor Channel Light 4	MISSING/TRLB		SF-0040-24	10/24
5710	Richmond Harbor Channel Light 8	MISSING/TRLB		SF-0109-24	32/24
5725	Richmond Harbor Channel Light 9	MISSING/TRLB		SF-0098-22	43/22
5845	San Rafael Creek Light 3	STRUCT DEST		SF-0109-23	48/23
6095	Mare Island Strait Light 2	STRUCT DMGD/TRLB		SF-0152-20	49/20
6100	Mare Island Strait Light 3	STRUCT DEST/TRLB		SF-0173-23	47/23
6240	Carquinez Strait Light 23	LT EXT		SF-0008-23	02/23
6445	Suisun Bay Channel Lighted Buoy 12	MISSING			43/24
6557	Suisun Bay Channel Light 24A	STRUCT DEST/TRLB		SF-0134-23	36/23
6685	San Joaquin River Light 8	STRUCT DMGD/TRLB		SF-0109-21	02/22
6760	San Joaquin River Light 25	MISSING/TRLB		SF-0012-24	05/24
6760	San Joaquin River Light 25	OFF STATION			42/24
6830	San Joaquin River Light 39	STRUCT DMGD		SF-0119-23	30/23
7210	Sacramento River Deep Water Ship Channel Light 10	MISSING/TRLB		SF-0101-21	32/21
7230	Sacramento River Deep Water Ship Channel Light 14	MISSING/TRLB		SF-0140-23	39/23
7235	Sacramento River Deep Water Ship Channel Light 15	MISSING/TRLB		SF-0100-20	42/23

7240	Sacramento River Deep Water Ship Channel Light 16	STRUCT DEST/TRLB		SF-0127-18	34/18
7260	Sacramento River Deep Water Ship Channel Light 20	MISSING/TRLB		SF-0108-21	05/23
7395	Sacramento River Deep Water Ship Channel Light 47	MISSING/TRLB		SF-0069-24	18/24
7605	Sacramento River Deep Water Ship Channel Light 84	LT EXT		SF-0116-24	37/24
7770	Bodega Head Light	MISSING	18640	SF-0113-24	35/24
7810	Bodega Harbor Channel Light 6	STRUCT DMGD/TRLB		SF-0028-21	08/23
7815	Bodega Harbor Channel Daybeacon 7	STRUCT DEST/TRLB		SF-0046-23	08/23
8130	Humboldt Bay Entrance Lighted Whistle Buoy HB	REDUCED INT	18620	HB-0013-23	46/23
8195.1	Humboldt Bay Light 9	STRUCT DMGD	18620	HB-0014-24	01/24
8200	Humboldt Bay Lighted Buoy 10	OFF STA		HB-0011-24	27/24
	Humboldt Bay Light 9 TRLB	OFF STA		HB-0012-24	31/24
	Humboldt Bay Light 9 TRLB	OFF STATION			41/24

**DISCREPANCIES (FEDERAL AIDS) CORRECTED**

LLNR	Aid Name	Status	Chart No.	BNM Ref.	LNM St	LNM End
1865	Glorietta Bay Channel Lighted Buoy 1	WATCHING PROPERLY			43/24	45/24
4330	Harding Rock Lighted Buoy HR	WATCHING PROPERLY			44/24	46/24
4606	Oakland Harbor Bar Channel Lighted Buoy 2	WATCHING PROPERLY			43/24	45/24
5740	Point Potrero Reach Range Front Light	WATCHING PROPERLY			43/24	45/24
5915	San Pablo Bay Channel Lighted Buoy 10	WATCHING PROPERLY			42/24	44/24
7670	Sacramento River Light 7	WATCHING PROPERLY			42/24	44/24
8170	Humboldt Bay Entrance Range Rear Light	WATCHING PROPERLY	18620		42/24	44/24

**DISCREPANCIES (PRIVATE AIDS)**

LLNR	Aid Name	Status	Chart No.	BNM Ref.	LNM St	LNM End
20	Ocean Beach Pier Fog Sound Signal	SS INOP		SD-0002-19	05/19	
158	Scripps Waverider Lighted Research Buoy 092	OFF STA	18740		45/18	
199	Scripps SB Channel CCE-2 Research Buoy	OFF STA	18700	LA-0104-24	24/24	
288	Monterey Bay (MBARI) Lighted Buoy (M1)	MISSING	18680		39/24	
478	Scripps Waverider Lighted Research Buoy 094	OFF STA	18620	HB-0010-24	27/24	
1654	Shelter Island East Shoal Light	LT IMCH			17/24	
1665	Americas Cup Harbor Daybeacon 2	LT IMCH			17/24	
1665	Americas Cup Harbor Daybeacon 2	STRUCT DEST/TRUB		SD-0001-22	02/22	
1670	Americas Cup Harbor Daybeacon 4	LT IMCH			17/24	
1720	Navy San Diego Bay Mooring Buoy 19	LT EXT		SD-0079-23	42/23	
2054	Sweetwater Channel Light 4	LT EXT		SD-0019-24	02/24	
2056	Sweetwater Channel Light 6	LT EXT		SD-0018-24	02/24	
2056	Sweetwater Channel Light 6	OFF STATION			40/24	
2056	Sweetwater Channel Light 6	OFF STATION			41/24	
2070	Coronado Cays Channel Daybeacon 3	STRUCT DEST		SD-0098-17	36/17	
2090	Coronado Cays Channel Light 7	STRUCT DEST/TRUB		SD-0046-22	31/22	
2159.1	Chula Vista Channel Shoal Light B	STRUCT DEST/LT EXT		SD-0021-23	14/23	
2240	Chula Vista Channel Light 18	LT EXT		SD-0040-24	38/24	
2255	Chula Vista Channel Light 21	DAYMK MISSING		SD-0017-24	03/24	

2288	Scripps Waverider Lighted Research Buoy 220	OFF STA		SD-0041-20	30/20
2289.1	Scripps Waverider Lighted Research Buoy 100	OFF STA	18740		22/20
2289.4	Scripps "CORDC" Lighted Research Buoy	MISSING	18740		22/20
2606	Quarry North Outer Lighted Mooring Buoy	MISSING			26/24
2764.4	Catalina Sea Ranch SE Buoy	MISSING	18740	LA-0001-22	03/22
2847	Long Beach Harbor Bait Barge LMB "NB"	OFF STA			12/24
2848	Harbor Bait Barge Lighted Mooring Buoy "LB"	MISSING			12/24
2856	Long Beach Harbor Mooring Buoy S-1	LT EXT			17/24
2860	Long Beach Harbor Harley Marine Mooring Buoy "H"	LT EXT			12/24
2866	Long Beach Harbor Manson Lighted Mooring Buoy M-1	LT EXT			17/24
2867.2	Long Beach Harbor Manson Lighted Mooring Buoy M-3	LT EXT			17/24
2870.1	Long Beach Harbor Manson Lighted Mooring Buoy M-4	LT EXT			17/24
2871	Long Beach Harbor Brusco Lighted Mooring Buoy	LT EXT		LA-0009-21	03/21
2871	Long Beach Harbor Brusco Lighted Mooring Buoy	LT EXT			12/24
2872	Long Beach Harbor Lighted Mooring Buoy PT	LT EXT			17/24
2875	Long Beach Harbor Bait Barge Lighted Mooring Buoy "FI"	MISSING			12/24
2890	Shoreline Marina Breakwater Light East	LT EXT			17/24
2895	Shoreline Marina Breakwater Light West	LT EXT			17/24
2900	Shoreline Marina Entrance Light East	LT EXT			17/24
2905	Shoreline Marina Entrance Light West	LT IMCH			20/24
2965	Catalina Landing West Light	LT EXT			12/24
3028	Pier F Fireboat Pier Light	LT EXT			12/24
3190	San Pedro Bait Company Lighted Mooring Buoy	OFF STA			26/24
3337	King Harbor Channel Buoy 1	OFF STA		LA-0028-24	07/24
3338	King Harbor Channel Buoy 2	OFF STA		LA-0028-24	07/24
3339.2	REDONDO HARBOR LIGHT	LT EXT	18740	LA-0181-18	52/18
3390	El Segundo NRG Energy Buoy 4ES	OFF STA			26/24
3400	El Segundo NRG Energy Buoy 6ES	OFF STA			26/24
3400	El Segundo NRG Energy Buoy 6ES	SINKING		LA-0153-21	39/21
3420	Hyperion Lighted Gong Buoy 10 ES	LT EXT			16/20
4401	Richardson Bay Daybeacon 8	DAYMK DMGD			15/20
4480	San Francisco Bay Anchorage 6 Lighted Mooring Buoy A	MISSING			46/23
4480.1	San Francisco Bay Anchorage 6 Lighted Mooring Buoy B	MISSING			46/23
4576	South Beach Harbor North Entrance Light 2	LT EXT		SF-0047-21	11/21
4577	South Beach Harbor North Entrance Light 1	LT EXT		SF-0046-21	10/21
4578	South Beach Harbor South Entrance Light 1	LT EXT		SF-0091-20	33/20
4827.1	San Francisco Bay Anchorage 9 Lighted Mooring Buoy A	LT EXT		SF-0012-20	04/20
4828.1	San Francisco Bay Anchorage 9 Lighted Mooring Buoy B	MISSING			39/23
5025	Oyster Cove Marina Light 1	LT IMCH			20/24
5035	Oyster Cove Marina Light 3	DAYMK DMGD			20/24

5045	Oyster Cove Marina Light 5	DAYMK DMGD		20/24
5140	Coyote Point Light 1	STRUCT DMGD		26/24
5145	Coyote Point Light 2	STRUCT DMGD		26/24
5518.2	Paradise Cay Light 3	LT EXT		39/24
5565	Corte Madera Channel Light 12	LT EXT		39/24
5661	Southampton Shoal Outfall Lighted Buoy 1	SINKING/RAC INOP	SF-0136-23	38/23
5662	Southampton Shoal Outfall Lighted Buoy 2	LT EXT	SF-0059-21	14/21
5877.2	San Rafael Rock Quarry Mooring Buoy C	MISSING		36/18
5960	Oleum Wharf West Lights (4)	LT EXT		17/24
5965	Oleum Wharf East Lights (4)	LT EXT		17/24
6115	Vallejo Yacht Club Light 2	REDUCED INT		17/24
6120	Vallejo Marina South Entrance Light 2	LT IMCH		17/24
6125	Vallejo Marina South Entrance Light 1	LT IMCH		17/24
6136	Vallejo Marina North Entrance Light 2	LT IMCH		17/24
6137	Vallejo Marina North Entrance Light 1	LT IMCH		17/24
6255	Martinez Marina Light 1	LT IMCH		17/24
6260	Martinez Marina Light 2	LT IMCH		17/24
6281	Amorco Wharf East Lights	LT EXT		17/24
6356	Suisun Bay Plains Products Pier Light (A)	LT EXT		17/24
6357	Suisun Bay Plains Products Pier Light (B)	LT EXT		17/24
6358	Suisun Bay Plains Products Pier Light (C)	LT IMCH		17/24
6359	Suisun Bay Plains Products Pier Light (D)	LT EXT		17/24
6363	Avon Turning Basin North Light	LT EXT		17/24
6365	Avon Wharf West Lights	LT IMCH		17/24
6605	Pittsburg Marina East Basin Light 1	LT IMCH		17/24
6623	New York Slough Koch West Light	LT IMCH		39/18
6624	New York Slough Koch East Light	LT EXT		39/18
6645.5	Delta Diablo Outfall Lighted Buoy	LT EXT	SF-0005-22	02/22
6677	Antioch Marina Entrance Light 1	LT IMCH		17/24
6677	Antioch Marina Entrance Light 1	LT IMCH		18/23
6678	Antioch Marina Entrance Light 2	LT IMCH		17/24
6678	Antioch Marina Entrance Light 2	LT IMCH		39/23
7650.1	Georgiana Slough Fish Barrier Warning Buoy 9	MISSING		17/24
7650.2	Georgiana Slough Fish Barrier Warning Buoy 10	MISSING		17/24
7650.3	Georgiana Slough Fish Barrier Warning Buoy 7	MISSING		17/24
7650.4	Georgiana Slough Fish Barrier Warning Buoy 8	MISSING		17/24
7650.5	Georgiana Slough Fish Barrier Warning Buoy 2	LT EXT		17/24
7650.6	Georgiana Slough Fish Barrier Warning Buoy 1	LT EXT		17/24
8325	Pacific Gas and Electric Dike Light	LT EXT	HB-0009-21	20/21
8591.2	Lake Tahoe NASA-JPL Lighted Research Buoy TB1	LT IMCH		39/24
8591.3	Lake Tahoe NASA-JPL Lighted Research Buoy TB4	LT IMCH		39/24
8591.4	Lake Tahoe UC Davis Lighted Research Buoy TDR1	MISSING		39/24

**DISCREPANCIES (PRIVATE AIDS) CORRECTED**

LLNR	Aid Name	Status	Chart No.	BNM Ref.	LNM St	LNM End
------	----------	--------	-----------	----------	--------	---------

None

**PLATFORM DISCREPANCIES**

Name	Status	Position	BNM Ref.	LNM St	LNM End
------	--------	----------	----------	--------	---------

None

**PLATFORM DISCREPANCIES CORRECTED**

Name	Status	Position	BNM Ref.	LNM St	LNM End
------	--------	----------	----------	--------	---------

None

**SECTION III - TEMPORARY CHANGES and TEMPORARY CHANGES CORRECTED**

This section contains temporary changes and corrections to Aids to Navigation for this edition. When charted aids are temporarily relocated for dredging, testing, evaluation, or marking an obstruction, a temporary correction shall be listed in Section IV giving the new position.

**TEMPORARY CHANGES**

LLNR	Aid Name	Status	Chart No.	BNM Ref.	LNM St	LNM End
182	Scripps Waverider CDIP Lighted Research Buoy 234	DISCONTINUED	18720	LA-0052-24	11/24	
1571	Ballast Point Shoal Buoy	DISCONTINUED FOR DREDGING		SD-0022-24	08/24	

**TEMPORARY CHANGES CORRECTED**

LLNR	Aid Name	Status	Chart No.	BNM Ref.	LNM St	LNM End
------	----------	--------	-----------	----------	--------	---------

None

**PLATFORM TEMPORARY CHANGES**

Name	Status	Position	BNM Ref.	LNM St	LNM End
------	--------	----------	----------	--------	---------

None

**PLATFORM TEMPORARY CHANGES CORRECTED**

Name	Status	Position	BNM Ref.	LNM St	LNM End
------	--------	----------	----------	--------	---------

None

**SECTION IV - CHART CORRECTIONS**

This section contains corrections to federally and privately maintained Aids to Navigation, as well as NOS corrections. This section contains corrective actions affecting chart(s). Corrections appear numerically by chart number, and pertain to that chart only. It is up to the mariner to decide which chart(s) are to be corrected. The following example explains individual elements of a typical chart correction.

Chart Number	Chart Edition	Edition Date	Last Local Notice to Mariners	Horizontal Datum Reference	Source of Correction	Current Local Notice to Mariners
12327	91st Ed.	19-APR-97	Last LNM: 26/97	NAD 83		27/97
Chart Title: NY-NJ-NEW YORK HARBOR - RARITAN RIVER						
Main Panel 2245 NEW YORK HARBOR						
(Temp) ADD	NATIONAL DOCK CHANNEL BUOY 3				CGD01 at 40-41-09.001N	074-02-48.001W
Corrective Action	Green can	Object of Corrective Action			Position	

(Temp) indicates that the chart correction action is temporary in nature. Courses and bearings are given in degrees clockwise from 000 true. Bearings of light sectors are toward the light from seaward. The nominal range of lights is expressed in nautical miles (NM) unless otherwise noted.

<b>18600</b>	<b>15th Ed.</b>	<b>01-MAR-11</b>	<b>Last LNM: 40/17</b>	<b>NAD 83</b>	<b>44/24</b>
--------------	-----------------	------------------	------------------------	---------------	--------------

ChartTitle: Trinidad Head to Cape Blanco

Main Panel 1800 TRINIDAD HEAD TO CAPE BLANCO . Page/Side: N/A

LAST EDITION No new editions of chart 18600 will be published. It will be canceled on 04-Dec-24. Comparable or larger scale Electronic Navigational Chart (ENC) coverage is available. See "Cancellation of NOAA Paper and Raster Nautical Charts" in Section I of this LNM for details. A list of all canceled NOAA charts is at <https://www.charts.noaa.gov/MCD/Dole.shtml>.

NOS  
--

18620 24th Ed. 01-FEB-12 Last LNM: 29/20 NAD 83 44/24

ChartTitle: Point Arena to Trinidad Head;Rockport Landing;Shelter Cove

Main Panel 1806 POINT ARENA TO TRINIDAD HEAD. Page/Side: N/A

LAST EDITION No new editions of chart 18620 will be published. It will be canceled on 04-Dec-24. Comparable or larger scale Electronic Navigational Chart (ENC) coverage is available. See "Cancellation of NOAA Paper and Raster Nautical Charts" in Section I of this LNM for details. A list of all canceled NOAA charts is at <https://www.charts.noaa.gov/MCD/Dole.shtml>.

NOS  
--

18640 27th Ed. 01-OCT-15 Last LNM: 33/20 NAD 83 44/24

ChartTitle: San Francisco to Point Arena

Main Panel 1816 SAN FRANCISCO TO POINT ARENA. Page/Side: A

LAST EDITION No new editions of chart 18640 will be published. It will be canceled on 04-Dec-24. Comparable or larger scale Electronic Navigational Chart (ENC) coverage is available. See "Cancellation of NOAA Paper and Raster Nautical Charts" in Section I of this LNM for details. A list of all canceled NOAA charts is at <https://www.charts.noaa.gov/MCD/Dole.shtml>.

NOS  
--

18680 32nd Ed. 01-MAY-13 Last LNM: 33/16 NAD 83 44/24

ChartTitle: Point Sur to San Francisco

Main Panel 1866 POINT SUR TO SAN FRANCISCO. Page/Side: N/A

LAST EDITION No new editions of chart 18680 will be published. It will be canceled on 04-Dec-24. Comparable or larger scale Electronic Navigational Chart (ENC) coverage is available. See "Cancellation of NOAA Paper and Raster Nautical Charts" in Section I of this LNM for details. A list of all canceled NOAA charts is at <https://www.charts.noaa.gov/MCD/Dole.shtml>.

NOS  
--

18700 23rd Ed. 01-SEP-13 Last LNM: 31/19 NAD 83 44/24

ChartTitle: Point Conception to Point Sur

Main Panel 1876 POINT CONCEPTION TO POINT SUR. Page/Side: N/A

LAST EDITION No new editions of chart 18700 will be published. It will be canceled on 04-Dec-24. Comparable or larger scale Electronic Navigational Chart (ENC) coverage is available. See "Cancellation of NOAA Paper and Raster Nautical Charts" in Section I of this LNM for details. A list of all canceled NOAA charts is at <https://www.charts.noaa.gov/MCD/Dole.shtml>.

NOS  
--

18720 35th Ed. 01-APR-20 Last LNM: 28/20 NAD 83 44/24

ChartTitle: Point Dume to Purisma Point

Main Panel 1880 POINT DUME TO PURISIMA POINT - -. Page/Side: -

LAST EDITION No new editions of chart 18720 will be published. It will be canceled on 04-Dec-24. Comparable or larger scale Electronic Navigational Chart (ENC) coverage is available. See "Cancellation of NOAA Paper and Raster Nautical Charts" in Section I of this LNM for details. A list of all canceled NOAA charts is at <https://www.charts.noaa.gov/MCD/Dole.shtml>.

NOS  
--

18740 46th Ed. 01-JUL-20 Last LNM: 10/21 NAD 83 44/24

ChartTitle: San Diego to Santa Rosa Island

Main Panel 1893 SAN DIEGO TO SANTA ROSA ISLAND - -. Page/Side: -

LAST EDITION No new editions of chart 18740 will be published. It will be canceled on 04-Dec-24. Comparable or larger scale Electronic Navigational Chart (ENC) coverage is available. See "Cancellation of NOAA Paper and Raster Nautical Charts" in Section I of this LNM for details. A list of all canceled NOAA charts is at <https://www.charts.noaa.gov/MCD/Dole.shtml>.

NOS  
--

---

---

SECTION V - ADVANCE NOTICES



This section contains advance notice of approved projects, changes to aids to navigation, or upcoming temporary changes such as dredging, etc. Mariners are advised to use caution while transiting these areas.

### **SUMMARY OF ADVANCED APPROVED PROJECTS**

**Approved Project(s)**  
None

**Project Date**      **Ref. LNM**

**Advance Notice(s)**

#### **CALIFORNIA-SAN FRANCISCO TO SAN DIEGO-REMOVAL OF RACONS ON AIDS TO NAVIGATION**

The U.S. Coast Guard will be removing the RACONS from aids to navigation located along the California Coast due to the consistent failure of the signals and that they are no longer considered necessary for safe navigation of the waterways. While there is no specific timeline for the removal of this equipment, it will be coordinated with servicing and discrepancy responses. The removal of the RACONS will be announced by Broadcast Notice to Mariners and published in the Local Notice to Mariners as Chart and Light List corrections. These aids to navigation are:

Harding Rock Lighted Buoy HR (LLNR 4330): 37-50-17.661N 122-26-45.579W

Los Angeles Approach Channel Lighted Whistle Buoy 3 (LLNR 3107): 33-41-16.012N 118-14-24.050W

Long Beach Channel Approach Lighted Whistle Buoy LB (LLNR 3010): 33-41-24.013N 118-11-01.050W

Mariners are requested to respond in writing to the Coast Guard District office with any comments on this change at D11-SMB-D11-LNM@uscg.mil.

Any discrepancy for these or other Aids to Navigation should continue to be reported to the closest US Coast Guard Sector.

Charts: 18007 18010 18022 18640 18649 18650 18680 18746 18749 18765 18772      LNM: 33/23

### **SECTION VI - PROPOSED CHANGES**

Periodically, the Coast Guard evaluates its system of aids to navigation to determine whether the conditions for which the aids to navigation were established have changed. When changes occur, the feasibility of improving, relocating, replacing, or discontinuing aids are considered. This section contains notice(s) of non-approved, proposed projects open for comment. SPECIAL NOTE: Mariners are requested to respond in writing to the District office unless otherwise noted (see banner page for address).

#### **PROPOSED WATERWAY PROJECTS OPEN FOR PUBLIC COMMENT**

**Proposed Project(s)**  
None

**Closing**      **Docket No.**      **Ref. LNM**

**Proposed Change Notice(s)**  
None

### **SECTION VII - GENERAL**

This section contains information of general concern to the Mariners. Mariners are advised to use caution while transiting these areas.

#### **ANNOUNCEMENT – U.S. Coast Pilot® 7 and U.S. Coast Pilot® -NEW EDITIONS-Spring 2023**

PUBLICATION–National Oceanic Atmospheric Administration (NOAA) – U.S. Coast Pilot 7, Pacific Coast:

California, 56th Edition, 2024, has been issued and is ready for free download and weekly updates at

[www.nauticalcharts.noaa.gov/publications/coast-pilot/index.html](http://www.nauticalcharts.noaa.gov/publications/coast-pilot/index.html).

Only Print-on-Demand (POD) bound copies are available for purchase; visit [nauticalcharts.noaa.gov/publications/print-agents.html#coast-pilot](http://nauticalcharts.noaa.gov/publications/print-agents.html#coast-pilot).

The 2024 Edition cancels the preceding 2023 Edition, and incorporates all previous corrections.

LNM: 23/24

#### **CALIFORNIA-CALIFORNIA COAST-VOLUNTARY VESSEL SPEED REDUCTION**

NOAA, U.S. Coast Guard and the Environmental Protection Agency request that all vessels 300 gross registered tons (GRT) or larger reduce speeds to 10 knots or less when transiting in the Vessel Speed Reduction zones off of San Francisco and Monterey from 1 May, 2024 until 31 December, 2024, and off Southern California from 1 May, 2024 until 15 December, 2024 to protect endangered whales. See 2024 NOAA USCG EPA VSR Announcement pdf in the enclosure section. These areas contain populations of endangered blue, humpback, and fin whales that are federally protected under the Federal Endangered Species Act (16 USC 1538 et seq.), the Marine Mammal Protection Act (16 USC 1361 et seq.), and the National Marine Sanctuaries Act (16 USC 1431 et seq.). Please report any collisions with whales or any observed injured or dead whales to the U.S. Coast Guard on VHF Channel 16. NOAA is asking for the public's help in tracking whales. Please report sightings through Whale Alert, a free application available at <https://www.whalealert.org/>. For more information, contact Sean Hastings at 805-705-1790 or email at [sean.hastings@noaa.gov](mailto:sean.hastings@noaa.gov).

LNM: 16/24

#### **CALIFORNIA-USCG-NEW MERCHANT MARINER CREDENTIAL**

The U.S. Coast Guard announced a new merchant mariner credential (MMC) set to launch on March 1, 2024. This milestone marks the first comprehensive revision of the mariner credential in nearly a decade and is strategically designed to enhance both quality of service and security within the Marine Transportation System (MTS). U.S. Coast Guard Marine Safety Information Bulletin (MSIB) 01-24, New Merchant Mariner Credential Passport Booklet Replacement, has been posted on the DCO's MSIB Site and announced at the National Maritime Center (CG-NMC) Home Page ([uscg.mil](http://uscg.mil)). Please visit these resources for more information on the credential.

LNM: 09/24

#### **CENTRAL CALIFORNIA- MONTEREY BAY- SEAFLOOR MAPPING SURVEYS**

#### **CENTRAL CALIFORNIA- MONTEREY BAY- SEAFLOOR MAPPING SURVEYS**

Monterey Bay Aquarium Research Institute will be conducting multibeam echosounder mapping of the upper Monterey Canyon between 14 October 2024 and 14 April 2025 in CA State Waters offshore of Moss Landing, east of 122-00-00W and between 36-51-59N and 36-39-59N. The R/V Paragon will be monitoring VHF-FM CH.-16. Mariners are requested to transit the area with caution. For more details or comments contact Charles Paull at (831) 775-1886 or Aaron Micallef at (831) 775-1747.

Chart 18680

LNM: 36/24

#### **CENTRAL CALIFORNIA-MORRO BAY-GEOPHYSICAL SURVEY OPERATIONS**

Golden State Wind LLC's low-energy geophysical site characterization surveys off the coast of Morro Bay, CA are continuing from 1 November, 2024 until 31 December, 2024 in federal waters. The survey vessel GO ADVENTURER, 9643087, will be utilizing low energy survey equipment and deploying an Autonomous Underwater Vehicle (AUV) for geophysical surveys. Crew will be continuously monitoring VHF-FM Chan. 13 & 16. Mariners are requested to transit the area with caution. For more information or comments contact, Golden State Wind's Fisheries Liaison, Rachel Mahler at 805-680-8138 or rachel.mahler@oceanwinds.com or check www.goldenstatewind.com/#mariners for Project updates.

Chart 18700

LNM: 42/24

#### **CENTRAL CALIFORNIA-TUOLUMNE RIVER-FLOODPLAIN AND SPAWNING HABITAT RESTORATION**

Triangle Properties, Inc. will be conducting Floodplain and Spawning Habitat Restoration from 8 July, 2024 until 31 October, 2024 near Tuolumne River in Stanislaus Country near the town of La Grange at 37-39-59N 120-27-49W and continuing downstream for 1.5 miles west. Mariners are requested to transit the area with caution. For more details or comments contact Terrie Hansen at 916-768-2282.

Chart 18020

LNM: 28/24

#### **LOWER COLORADO RIVER-LAKE HAVASU, AZ-MARINE EVENT**

I Love Lake Havasu will be sponsoring the 2024 Lake Havasu City Christmas Parade of Lights on 14 December, 2024, from 4:00pm until 9:00pm. The event will involve approximately 75 vessels parading on a course starting in Thompson Bay, proceeding north through the Bridgewater Channel, circling around near Windsor State Beach, proceeding south through the Bridgewater Channel, and finishing back in Thompson Bay. A special local regulation will be enforced for this event, entry into the Bridgewater Channel will be limited to event participants. Mariners are requested to transit the area with caution. For comments or details, contact J.J. Gibbs at 928-486-7063.

LNM: 41/24

#### **LOWER COLORADO RIVER-PARKER, AZ-MARINE EVENT**

The Arizona Drag Boat Association will be sponsoring the ADBA Finals from 1-3 November, 2024 from 8:00am until 5:00pm. The event will consist of approximately 100 vessels racing on a course in front of the Bluewater Resort and Casino from 8:00am until 5:00pm each day. Mariners are requested to transit the area with caution. For more details or comments, contact Jeremy Denny at 602-614-0560.

LNM: 40/24

#### **LOWER COLORADO RIVER-PARKER, AZ-MARINE EVENT**

Seventy Point 8LLC will be sponsoring the Another Dam Race marine event from 2-3 November, 2024 from 7:00am until 1:00pm each day. The event will consist of paddle craft races starting in front of Blue Water Resort and Casino and continuing along the Parker strip of the Colorado River. Mariners are requested to transit the area with caution. For more details or comments, contact John Burns at 602-513-3067.

LNM: 40/24

#### **LOWER COLORADO RIVER-PARKER-MARINE EVENT**

The Sundance Saloon will be sponsoring the Outlaw Nationals on 11 November, 2024, from 8:00am until 5:00pm in Parker, AZ. The event will involve solo demonstrations of power-driven boats on a 600-foot course located between Fox's RV Resort at position 34-14-43N 114-10-34W and Echo Lodge at 34-14-55N 114-10-12W. Approximately 50 total vessels are expected to be participating in this event. Mariners are requested to transit the area with caution. For more details or comments, contact Chris Ketron at 602-689-1104.

LNM: 41/24

#### **LOWER COLORADO RIVER-PARKER-MARINE EVENT**

The Southern California Speedboat Club will be sponsoring the Blue Water Resort & Casino 78th Annual Thanksgiving Regatta from 22-24 November, 2024 from 8:00am until 6:pm each day. The event will involve approximately 13-15 classes of power vessels racing on a course in the vicinity of Blue Water Beach. Mariners are requested to transit the area with caution. For more details or comments, contact Ross Wallach at 310-318-4012.

LNM: 40/24

#### **NORTHERN CALIFORNIA- OFFSHORE CHANNEL ISLAND- POINT MUGU -SURVEY OPERATIONS**

SAILDRONE, INC. is conducting 24/7 operations 10 September, 2024 thru 31 December, 2024 with up to four Uncrewed Surface Vehicles (USVs), called "SAILDRONE Voyager." The SAILDRONE Voyager is 10 meters in length, 6.4 meters tall, grey in color, has a tricolor light on top of the wing and is marked "SAILDRONE". This vehicle will be operating in the waters around predominantly offshore Channel Islands and Pt. Arguello and Pt. Mugu. Servicing is possible in major ports & harbors as far north as Morro Bay and as far south as San Diego. Mariners are requested to remain greater than 500 meters away from the vehicle. For more details or comments regarding this notice can be directed to Saildrone Mission Control at missioncontrol@saildrone.com or via phone at +1-510-722-6070

Chart 18653

LNM: 36/24

#### **NORTHERN CALIFORNIA-ALCATRAZ ISLAND-MARINE CONSTRUCTION**

Manson Construction Co. will be conducting marine construction to the wharf at Alcatraz Island at 37-49-36N 122-25-15W. Construction will begin on 23 January, 2023 and be completed on 04 October, 2025. During construction DB HAGAR will be utilizing divers during low tide. Tug WESTAR will be assisting DB HAGAR and monitoring VHF-FM Chan. 13 and 16. Mariners are requested to transit the area with caution. For more details or comments contact Matt Lehmann at 510-529-1583.

Chart 18653

LNM: 50/22

#### **NORTHERN CALIFORNIA-BENICIA-DREDGING-OPERATIONS**

The Dutra Group will be conducting dredging operations at the Valero Refinery dock from 20-30 October, 2024 at 38.042079N -122.131819W.

**NORTHERN CALIFORNIA-BENICIA-DREDGING-OPERATIONS**

Clamshell dredges DB24, tow tug LASSEN, tender tug BECKY T or similar, and a scow fleet of (4) split hull scows will be monitoring VHF-FM Chan. 13, 14 & 80. The material from the Valero Refinery will be disposed of at Montezuma Wetland Restoration Project (MWRP). Mariners are requested to transit the area with caution. For more details or comments, contact Chris Milam at 415-218-6739.

LNM: 42/24

**NORTHERN CALIFORNIA-BERKELEY MARINA-MARINE OPERATIONS**

The Dutra Group will be conducting marine operations from 21 September, 2024 until 1 November, 2024 at the Berkeley Marina. Operations will be bound by the following positions:

37-52-07N 122-19-00W

37-52-08N 122-18-54W

37-52-03N 122-18-53W

37-52-02N 122-18-58W

C/B KELSO will be positioned via spuds around the marina docks D and E and will be equipped with a crawler crane, along with a workboat, flat deck barge and work skiffs. Approximately once or twice a week, the flat deck barge will be brought to Pier 96 in San Francisco and another flat deck barge will be brought to Berkeley Marina. Work will occur during daylight hours, and the spud barge will likely maneuver around the marina during that time. If not moving into location and working, the crane barge will be spudded down with flashers on all corners along with all other marine equipment. C/B KELSO and vessels will be monitoring VHF-FM Chan. 9, 16 & 77. Mariners are requested to transit the area with caution. For more details or comments, contact Nicholas Dino at 707-389-0505

Chart 18680

LNM: 39/24

**NORTHERN CALIFORNIA-BERKELEY- DREDGING OPERATIONS**

The Dutra Group will be conducting dredging operations from 30 August, 2024 thru 30 November, 2024 operating the marina 24 hours a day, 7 days a week at the Berkeley Marina. The Derrick Barge DB-24/BEAVER or MORTY and excavator dredge HORTON will be carrying out dredging operations. tow tug LASSEN and tender tug PHILLIS T will be monitoring VHF-FM Chan. 13, 14 & 80. Mariners are requested to transit the area with caution. For more details or comments contact Chris Milam at 415-218-6739.

Chart 18640

LNM: 35/24

**NORTHERN CALIFORNIA-CONCORD-DEBRIS REMOVAL**

The Dutra Group will be conducting debris removal operations from 7 October, 2024 until 30 November, 2024 at Military Ocean Terminal Concord at Pier 2 and Pier 3 at MOTCO, 12 hours a day, 7 days a week. D/B BEAVER, tow tug SARAH REED, tender tug PHILLIS T will carry out diving operations to relocate debris and will be monitoring VHF-FM Chan. 13, 14, & 80. Mariners are requested to transit the area with caution. For more details or comments, contact Dennis Salyers at 415-497-5289.

Chart 18640

LNM: 40/24

**NORTHERN CALIFORNIA-CRESENT CITY-DREDGING OPERATIONS**

Camenzind Dredging, Inc. and U.S. Army Corps of Engineers will be conducting maintenance dredging from 3 October, 2024 until 15 December, 2024 24 hours a day, 7 days a week in Crescent City Harbor Entrance Channel at 41-44-11N 124-11-20W. Maintenance dredging will utilize a hydraulic suction dredge and floating-submerged pipeline, with upland disposal at the Crescent City provided disposal site on Whaler Island. Floating-submerged pipeline will be marked with 30" diameter spherical yellow floats and anchors are marked with 30" diameter spherical white buoys. D/B PAUL VINCENT, W/B FESTER and skiffs will be monitoring VHF-FM Chan. 16 & 68. Mariners are requested to transit the area with caution. For more details or comments, contact Kurt Camenzind at 650-424-0367.

Chart 18020

LNM: 40/24

**NORTHERN CALIFORNIA-DELTA & RIVERS-AMERICAN RIVER-BRIDGE**

CAPITAL CITY HWY (Route 51) BRIDGE-Caltrans is conducting rehabilitation of the bridge until 27 June, 2025. Work will be conducted during daylight hours, 7am to 5:30pm, Monday through Friday, and will include the use of barges, work boats, tugboats, turbidity curtains, and access piers. (See AmRiv\_SiltCurtain\_BargeLocation.pdf in the enclosure section.). During the workday, barges can be moved for the safety of navigation with one hour notice to the contractor via VHF-FM CH 16 or by cell at 916-532-8208. Mariners should contact the contractor before transiting the bridge to determine location of turbidity curtains. Barges will be unmanned and moored at their work locations overnight. Each corner of each barge will be lighted at night with steady burning red lights. At least 25 feet of horizontal clearance for navigation will be available at all times. Mariners are requested to transit the area with caution. For further information, contact the Coast Guard Bridge Office at 510-774-1204.

Chart 18662

LNM: 23/22

**NORTHERN CALIFORNIA-DELTA & RIVERS-GRANT LINE CANAL-BRIDGE**

TRACY BLVD BRIDGE- The bascule span of the bridge will be secured in the closed-to-navigation position from 1 October, 2024 until 31 January, 2025, for bridge rehabilitation. When closed the bridge provides 16' of vertical clearance at high water. Vessels that can transit the bridge while closed can continue to do so at any time. For further information, contact the Coast Guard Bridge Office at (510) 437-3461 or via email at D11Bridges@uscg.mil.

Chart 18661

LNM: 28/24

**NORTHERN CALIFORNIA-DELTA & RIVERS-HONKER CUT-BRIDGE**

8-MILE ROAD BRIDGE- San Joaquin County will secure the drawspan in the closed-to-navigation position from 1 October, 2024 until 31 January, 2025, to conduct repair/rehabilitation work. When closed the bridge provides 6' of vertical clearance at mean high water. Vessels that can transit the bridge while closed can continue to do so at any time. For further information, contact the Coast Guard Bridge Office at (571) 607-5820 or via email at D11Bridges@uscg.mil.

Chart 18661

LNM: 34/24

**NORTHERN CALIFORNIA-DELTA & RIVERS-MIDDLE RIVER-BRIDGE**

BACON ISLAND ROAD DRAWBRIDGE-The swing span of the bridge will be secured in the closed-to-navigation position from 1 October, 2024 until 31 January, 2025, for bridge rehabilitation. When closed the bridge provides 8' of vertical clearance at mean high water. Vessels that can transit the bridge while closed can continue to do so at any time. For further information, contact the Coast Guard Bridge Office at (510) 437-3461 or via email at D11Bridges@uscg.mil.

Chart 18661

**NORTHERN CALIFORNIA-DELTA & RIVERS-MIDDLE RIVER-BRIDGE**

LNM: 28/24

**NORTHERN CALIFORNIA-DELTA & RIVERS-MOKELUMNE RIVER-BRIDGE**

MOKELUMNE RIVER BRIDGE (STATE ROUTE 12)-The swing span of the bridge is secured in the closed-to-navigation position due to structural issues. Estimated time of repair is unknown. When closed, the bridge provides 7 feet of vertical clearance at Mean High Water. Vessels able to transit the bridge while closed can continue to do so at any time. For more information contact the Coast Guard Bridge Office by telephone at 571-607-2207 or by email at D11Bridges@uscg.mil.

Chart 18661

LNM: 39/24

**NORTHERN CALIFORNIA-DELTA & RIVERS-PETALUMA RIVER-BRIDGE**

D STREET BRIDGE-The bascule span of the bridge is secured in the closed to navigation position until further notice for emergency electrical repairs. When closed, the bridge provides 7 feet of vertical clearance at mean high water. Vessels able to transit the bridge while closed can continue to do so at any time. For further information contact the Coast Guard at 510-219-4366.

LNM: 44/24

**NORTHERN CALIFORNIA-DELTA & RIVERS-PETALUMA RIVER-BRIDGE**

BLACK POINT RAILROAD BRIDGE- The upstream northeast side fenders and dolphin are damaged and may not offer adequate protection for the bridge or vessels. Mariners are urged to exercise caution when transiting through the bridge. Estimated time of repairs is unknown. For comments, contact the Coast Guard Bridge at 510-437-3516 or via email D11Bridges@uscg.mil.

Chart 18654

LNM: 32/24

**NORTHERN CALIFORNIA-DELTA & RIVERS-SACRAMENTO RIVER-BRIDGE**

REPLACEMENT BUTTE CITY BRIDGE- Replacement bridge construction continues Monday through Friday during daylight hours until 25 September, 2026. A temporary trestle, along with falsework, has been installed at the bridge site. High flood waters have caused damaged to the temporary trestle. The alternate navigation span during construction has moved from the center of the trestle to the east bank of the river. Mariners are requested to use extreme caution when transiting the construction site. The alternate navigation span will be moved back to its original position once water flows recede, and the trestle can be repaired. For on-scene conditions contact Golden State Bridge, Inc, at 415-720-6577 or 925-260-0403 or Caltrans at 530-941-8272 or 530-682-3931. For further information contact the Coast Guard Bridge Office at 510-437-3461.

LNM: 09/24

**NORTHERN CALIFORNIA-DELTA & RIVERS-SACRAMENTO RIVER-BRIDGE**

TOWER DRAWBRIDGE- The drawspan will be secured in the closed-to-navigation position for a community event from 6:00am until 11:00pm on 27 October 2024. The bridge provides 30' vertical clearance above mean high water when closed. Vessels that can transit the bridge in the closed position may continue to do so at any time. For further information, contact the Coast Guard Bridge Office at 571-607-5820 or at D11Bridges@uscg.mil.

Chart 18662

LNM: 40/24

**NORTHERN CALIFORNIA-DELTA & RIVERS-SACRAMENTO RIVER-BRIDGE**

ISLETON BRIDGE-From 18 November, 2024 through 16 May, 2025 the double leaf bascule bridge will be operating a single leaf during rehabilitation work. One leaf of the bridge will open on signal if at least 4-hours notice is given to the drawtender at the Rio Vista bridge across the Sacramento River at mile 12.8. During single leaf operations, from the end of the closed leaf to the tip of the open leaf, the bridge provides approximately 88 feet of horizontal clearance. For further information contact the Coast Guard Bridge Office at 510-219-4366.

Chart 18661

LNM: 43/24

**NORTHERN CALIFORNIA-DELTA & RIVERS-SACRAMENTO RIVER-BRIDGE**

RIO VISTA BRIDGE-Continuing rehabilitation of the bridge will require an advance notice from vessels for openings. Therefore, the lift span of the bridge will open on signal if at least 4-hour notice is given to the drawtender at 707-374-2134. For further information contact the Coast Guard Bridge Office at 510-437-3516 or D11Bridges@uscg.mil.

Chart 18661

LNM: 25/24

**NORTHERN CALIFORNIA-DELTA & RIVERS-STEAMBOAT SLOUGH-BRIDGE**

STEAMBOAT SLOUGH BRIDGE-The drawspan of the bridge is secured in the closed-to-navigation position from 6:00am on 15 July, 2024 through 6:00pm on 30 December, 2024, for rehabilitation work. When closed, the bridge provides 20 feet of vertical clearance at mean high water. Vessels able to pass through the bridge while closed can continue to do so at any time. Vessels that cannot pass the bridge when closed can take an alternate route to reach either side of the bridge. For further information contact the Coast Guard Bridge Office at 510-219-4366 or D11Bridges@uscg.mil.

Chart 18662

LNM: 27/24

**NORTHERN CALIFORNIA-ECHOSOUNDER SURVEY-MONTEREY BAY**

R/V PARAGON will be conducting a Multibeam Echosounder Survey operations in the vicinity of Moss Landing in position 36-48-00N, 121-47-00W for the following dates pending weather.

2024: 14 October, 13 November, 5 December and 19 December.

2025: 16 January, 13 February, 13 March and 10 April.

R/V PARAGON will monitor VHF-FM Chan. 13 and 16. Mariners are requested to transit the area with caution. For more details or comments contact Aaron Micallef at 831-775-1747.

Chart 18700

LNM: 31/24

**NORTHERN CALIFORNIA-HALF MOON BAY-BUOY DEPLOYMENT**

Sofar Ocean will be deploying 3 moored buoys on 2 October, 2024 pending weather until 15 February, 2025 in Half Moon Bay at the coordinates

37-26-21 122-31-42

37-26-29 122-31-51

37-26-29 122-31-39

**NORTHERN CALIFORNIA-HALF MOON BAY-BUOY DEPLOYMENT**

A 19' C-Dory (CF35715X) will be performing the deployment and will be monitoring VHF-Chan. 16. Mariners are requested to transit the area with caution. For more details or comments, contact Ciara Dorsay at 415-230-2299.

Chart 18680

LNM: 40/24

**NORTHERN CALIFORNIA-HUMBOLDT BAY-PRIVATE AID DEPLOYMENT**

CDIP 168 Humboldt Bay North Spit, NDBC 46244, Light List number 505 was redeployed at 40.895600N -124.358083W approximately 8.7 nautical miles offshore Eureka CA. Buoy is a Directional Waverider 4 that measures waves, sea surface temperature, air temperature and surface current speed and direction. The new position is within 500 yards of the previous position. Buoy is 3 foot diameter sphere with an attached telemetry whip antenna and a night time yellow color warning flashing light. The light timing sequence is a series of 5 flashes at 1-second intervals with a period of 20 seconds between each series. Visual range is one kilometer. Buoy is painted yellow and marked "Wave Buoy" with the url cdip.ucsd.edu and phone number 858-534-3032. Mariners are requested to transit the area with caution. For more details or comments, contact Ross Timmerman at 619-818-8387.

Chart 18620

LNM: 44/24

**NORTHERN CALIFORNIA-HUMBOLDT-NAVIGATION OBSTRUCTION**

Humboldt Bay Light 9 (LLNR 8195.1) is damaged and an obstruction to navigation. The 60 ft single steel pile is at a 60-degree angle to the East. The top 5ft X 5ft cage is missing and the pile is visible at a negative low tide. At high tide the pile is not visible. Mariners are requested to transit the area with caution. For more details or comments contact Sector San Francisco Waterways Management Division at SFWaterways@uscg.mil.

Chart 18010

LNM: 20/24

**NORTHERN CALIFORNIA-HUMBOLDT-TEMPORARY BUOY OFF STATION**

Humboldt Bay Light 9 Temporary Lighted Buoy, marking the shoal and wreck of Humboldt Bay Light 9, is currently off station in position 40-45-27N 124-13-25W. Mariners are requested to transit the area with caution. For more details or comments contact Sector San Francisco Waterways Management Division at SFWaterways@uscg.mil.

Chart 18620

LNM: 31/24

**NORTHERN CALIFORNIA-HUMBOLDT-WIND ENERGY PROJECT**

The Humboldt Wind Energy Area includes the joint Fisheries Communication Plan developed by RWE and Vineyard Offshore to inform and guide communications between leaseholders in the Humboldt Wind Energy Area located 17-29 nautical miles off the coast of Humboldt, the fishing industry, and other marine users. The current version of this Plan, along with all subsequent revisions, will be available on the Companies' websites. RWE: <https://americas.rwe.com/-/media/RWE/RWE-USA/documents/rwe-vineyard-offshore-joint-fcp.pdf>. Vineyard Offshore: <https://www.vineyardoffshore.com/california>. Please provide any feedback on this plan via email to Rick Robins at rick.robins@rwe.com 757-876-3778 or Lucia Ordonez at lordonez@vineyardoffshore.com 707-572-9011.

Chart 18620

LNM: 06/24

**NORTHERN CALIFORNIA-LAKE TAHOE-CABLE REMOVAL**

J. F. Brennan Company, Inc. will be conducting submarine cable removal from 1 November, 2024 until 1 December, 2024 from 6:00am until 6:00pm at the mouth of Emerald Bay approximately at the following positions:

Mobilization and Demolition Point: 38.93861N -120.00444W

Start of Cable Removal: 38.94417N -120.06972W

End of Cable Removal: 39.01028N -120.11361W

Submarine cable will be removed from the lakebed from Baldwin Beach northward along the shoreline to and across the mouth of Emerald Bay to a point terminating at a point near the central North/South point of Rubicon Bay. Equipment will be mobilized from and return to Tahoe Keys Marina. Vessels, 26' push boat RODGER BEAN and JAMES O'NEILL, 30' dive vessel BELLA G, 22' drop ramp work skiff, (2) 18' work skiffs and (2) 20'x40' sectional material barges will be monitoring VHF-FM Chan. 16 & 67. Mariners are requested to transit the area with caution. For more detail or comments, contact Michael Cannel at mcannell@jfbrennan.com or 608-406-1368.

LNM: 44/24

**NORTHERN CALIFORNIA-LITTLE ALCATRAZ-SUNKEN VESSEL**

The Coast Guard has received a report of a sunken vessel in vicinity of Little Alcatraz off of Alcatraz Island in position 37-49-41N 122-25-37W with intentions of salvage when possible. Mariners are requested to transit the area with caution. For more details or comments, contact Coast Guard Sector San Francisco at 415-399-3647.

Chart 18650

LNM: 30/24

**NORTHERN CALIFORNIA-MONTEREY- WAVEGLIDER DATA COLLECTION**

The Monterey Bay Aquarium Research Institute (MBARI) will be conducting 24/7 autonomous, unmanned maritime vehicle operations of two Liquid Robotics, Inc. Wavegliders from 25 January, 2024 until 31 December, 2024 between latitudes 36-18-00N and 37-12-00N and will extend shoreward from as far west as 122-58-35W longitude. Operations consist of scientific ocean data collection. Wave Glider carries no fuel, lubricants, or hydrocarbons, is wave powered, remotely attended from MBARI, moving at speeds of ~1kt, and designed to give way or part if encountered by a vessel. It is approximately 8' x 2' (surfboard size), yellow/copper in color, with a contact plaque and mast extending 1 meter above the water surface supporting a flag. Mariners are advised to use caution when transiting the area. For further information, authorities and mariners can contact MBARI at 831-775-1700, waveglider@listserver.mbari.org, or Liquid Robotics 24/7 WGO Operations at 888-574-4574 or 408-636-4205.

Chart 18685

LNM: 05/24

**NORTHERN CALIFORNIA-MONTEREY-DIVING OPERATIONS**

Surf to Snow Environmental Resource Management (S2S) and Power Engineering Construction (PEC) will be conducting SCUBA and surface supplied diving operations from 20 June, 2024 through 30 November, 2024 in the vicinity of the Monterey Bay Aquarium, Monterey 36-37-10N 120-54-04. The M/V WEBSTER will be on scene monitoring VHF-FM Chan. 68. Mariners are requested to transit the area with caution. For more details or comments, contact Kameron Strickland at 925-557-6459.

Chart 18010

LNM: 26/24

**NORTHERN CALIFORNIA-MOSS LANDING-RESEARCH BUOY DEPLOYMENT**

#### **NORTHERN CALIFORNIA-MOSS LANDING-RESEARCH BUOY DEPLOYMENT**

Monterey Bay Aquarium Research Institute has deployed a 2' round yellow unlit research buoy until 31 December, 2024 approximately 6nm South East of Moss Landing in position 36-44-34.8N 121-53-13.2W. For further comments or details contact Brent Jones at 831-775-2064.

Chart 18680

LNM: 33/24

#### **NORTHERN CALIFORNIA-NAPA- DIRECTIONAL DRILLING OPERATION**

PG&E will be conducting horizontal directional drilling operations below the Napa River to install a pipeline crossing in Napa at 38-14-30N 122-17-10W from 22 April, 2024 until 31 October, 2024. Construction equipment will be staged on land above the adjacent shorelines. Mariners are requested to transit the area with caution. For more details or comments contact Garrett Pon at 925-658-0672.

Chart 18654

LNM: 11/24

#### **NORTHERN CALIFORNIA-OAKLAND INNER HARBOR-BRIDGE**

FRUITVALE AVE RAIL BRIDGE-The lift span of the rail bridge is kept in the partially opened position providing 80 feet of vertical clearance at mean high water. The lift span can be raised to its fully open position upon request to the drawtender at the Miller Sweeny (Fruitvale Ave) bridge. The following is the new navigation lighting configuration at the rail bridge.

1. When the bascule span of the highway bridge is in the closed-to-navigation position and the lift span of the railroad bridge is in the partially open position, providing 80 feet of vertical clearance at mean high water, the lift span center channel navigation lights will show a red 180-degree center span light on the upstream and downstream lower edge of the span.
2. When the bascule span of the highway bridge is in the fully opened position and the lift span of the railroad bridge is in the partially opened position, providing 80 feet of vertical clearance at mean high water, the lift span center channel navigation lights will show one solid 360-degree green light and one flashing 360-green light on the upstream and downstream lower edge of the span, providing a range for the centerline of the channel between both highway and railroad bridges.
3. When the bascule span of the highway bridge is in the fully opened position and the lift span of the railroad bridge is in the fully opened position, providing 135 feet of vertical clearance at mean high water, the lift span center channel navigation lights will show two solid 360-degree green lights on the upstream and downstream lower edge of the span, providing a range for the centerline of the channel between both highway and railroad bridges.

For further information contact the Coast Guard Bridge Office at 510-437-3516.

Chart 18649

LNM: 25/24

#### **NORTHERN CALIFORNIA-OAKLAND- DREDGING OPERATIONS**

The Dutra Group will be conducting dredging operations from 06 September, 2024 thru 30 November, 2024 operating the marina 24 hours a day, 7 days a week at the Port of Oakland. The Derrick Barge DB-24/BEAVER will be carrying out dredging operations. tow tug HEIDI L. BRUSCO. Mariners are requested to transit the area with caution. For more details or comments contact tender tug PHYLLIS T OR BECKY T. All equipment will be monitoring VHF-FM Chan. 13, 14 & 80 or contact Chris Milam at 415-218-6739.

Chart 18640

LNM: 36/24

#### **NORTHERN CALIFORNIA-OAKLAND-MARINER OPERATIONS**

The Dutra Group will be conducting marine operations for the emergency pier rehabilitation occurring at the Oakland Airport ALSF Pier from 19 April, 2024 until 7 December, 2024. A flexi Barge along with a tugboat and small skiff will be anchored near the pier along with being tied to it. The Barges will be spudded in with flashers on all corners along with all other marine equipment, the upstream and downstream corners of each barge will be lighted at night with steady burning red lights and will be monitoring VHF-FM Chan. 9, 16 & 68A. Mariners are requested to transit the area with caution. For more details or comments contact Lucas Walker at 707-378-3822.

Chart 18650

LNM: 16/24

#### **NORTHERN CALIFORNIA-OLD RIVER-HAZARD TO NAVIGATION**

The Coast Guard has received a report of downed powerlines in Old River from Mandeville Island to Webb Tract. The downed powerlines have been cut by PG&E and remain laying on the bottom of Old River. Mariners are recommended to avoid anchoring in the area and transit the area with caution. For details or comments contact Coast Guard Sector San Francisco Waterways at 510-612-9729.

Chart 18661

LNM: 01/23

#### **NORTHERN CALIFORNIA-PETALUMA-MARINE CONSTRUCTION**

The Dutra Group will be conducting marine construction on the Petaluma River turning basin from 15 June, 2024 until 30 November, 2024 at positions:

38-14-05N 122-38-17W

38-1-06N 122-38-13W

38-14-09N 122-38-15W

38-14-08N 122-38-18W

The main construction activities include the demolition of a deteriorated timber pier access site structure, metal gangways, floating docks and removal of existing wood and steel piles. The new construction will include the installation of the replacement 3800 SQFT. Concrete floating docks, ADA-compliant steel gangways with an associated gangway landing platform, and (14) 16-inch diameter steel support piles within the Petaluma turning basin located within the Petaluma River of the City of Petaluma. C/B KELSO equipped with a 230-ton crawler crane, material supply barge, work boat, and work skiffs will be monitoring VHF-FM Chan. 9, 16, 76 & 80. At the end of the shift, C/B KELSO will be spudded in with miscellaneous marine equipment side tied with flashers on all corners. Mariners are requested to transit the area with caution. For more details or comments, contact Jason Tse at 415-300-5336.

Chart 18654

LNM: 23/24

#### **NORTHERN CALIFORNIA-PIGEON POINT-TEMPORARY DISESTABLISHMENT**

The U.S. Coast Guard has temporarily disestablished the light on Pigeon Point Light (LLNR 320) for approximately 18 months due to planned maintenance. The aid is in position 37-10-54.281N, 122-23-38.253W. Direct any questions or comments regarding this project to Roger Wykle at rwykle@sustainable-group.com or (925) 899-9721.

**NORTHERN CALIFORNIA-PIGEON POINT-TEMPORARY DISESTABLISHMENT**

Chart 18022

LNM: 08/24

**NORTHERN CALIFORNIA-POINT SAN PABLO- MARINE DEMOLITION**

Silverado Contractors, Inc. will be conducting marine demolition from 21-25 October, 2024 at position 37.96333N 122.42916W. Crane Barge CB2, and GARY (WDP6785 will be monitoring VHF-FM Chan. 14 & 16. Mariners are requested to transit the area with caution. For more details or comments contact Matt Bramlett at 925-818-2324 or Mbramlett@silveradocontractors.com.

Chart 18640

LNM: 43/24

**NORTHERN CALIFORNIA-RICHARDSON BAY-BUOY DEPLOYMENT**

Richardson Bay Regional Agency will be deploying 5 private aids from 25 October, 2024 until 11 November, 2024. Buoys will be regulatory buoys, white with orange and black decals with a yellow flashing light every 6 seconds at positions:

37.86694N 122.47917W

37.86167N 122.47889W

37.86N 122.47389W

37.86028N 122.46694W

37.87167N 122.47944W

Vessel CF-2839 JC will be monitoring VHF-FM Chan. 16. Mariners are requested to transit the area with caution. For more details or comments, contact James Malcolm at 415-971-3919 or James.Malcolm@marincounty.gov.

LNM: 43/24

**NORTHERN CALIFORNIA-RICHMOND-DREDGING OPERATIONS**

The Dutra Group will be conducting Dredging Operations from 14 October, 2024 until 30 November, 2024 at the Chevron Long Wharf in Richmond 24 hours a day, 7 days a week at 37-55-19N 122-24-40W. DB 24, HEIDI L, BECKY T or PHYLLIS T and a scow fleet of 5 split hull scows will be monitoring VHF-FM Chan. 13, 14 & 80A. Mariners are requested to transit the area with caution. For more details or comments, contact Dennis Salyers at 415-497-5289.

Chart 18640

LNM: 41/24

**NORTHERN CALIFORNIA-RICHMOND-DREDGING OPERATIONS**

The Dutra Group will be conducting Dredging Operations from 14 October, 2024 until 30 November, 2024 at the Chevron Long Wharf in Richmond 24 hours a day, 7 days a week at 37-55-19N 122-24-40W. DB 24, HEIDI L, BECKY T or PHYLLIS T and a scow fleet of 5 split hull scows will be monitoring VHF-FM Chan. 13, 14 & 80A. Mariners are requested to transit the area with caution. For more details or comments, contact Dennis Salyers at 415-497-5289.

Chart 18640

LNM: 41/24

**NORTHERN CALIFORNIA-RIO VISTA-MARINE OPERATIONS**

The Dutra Group will be conducting marine operations from 30 September, 2024 until 31 October, 2024 along Hastings Island. The work consists of furnishing all labor, materials, equipment, and all incidental related work to complete the placement of rock and soil material. A crane barge (50'x150') equipped with an excavator, along with a tugboat will be utilized to place the material in a designated stockpile area to the right of the Hastings Island Bridge. The crane barge may be spudded at various locations during construction within the construction area. A material barge will be moored alongside the crane barge during operations. Work will occur during daylight hours but towing of the material supply barge and maneuvering of the crane barge outside of the construction area may continue at all hours. At the end of each shift, crane barges will be spudded in with flashers on all corners along with all other marine equipment. The upstream and downstream corners of the barge will be lit at night with steady white lights. The Crane Barge crews will be monitoring VHF-FM Chan. 9, 16 & 68A. Mariners are requested to transit the area with caution. For more details or comments, contact Lucas Walker at 707-378-3822.

Chart 18020

LNM: 40/24

**NORTHERN CALIFORNIA-RIO VISTA-MARINE OPERATIONS**

The Dutra Group will be conducting marine operations from 18 June, 2024 until 31 December, 2024 along Hastings Island along Cache Slough down to the Hastings Island Bridge. TM 20 Barge equipped with either the Bucyrus Erie 88B crane or 390 Long Reach Excavator along with a tender workboat, material supply barges, and miscellaneous work skiffs will be utilized on the project. At the end of each shift, crane barges will be spudded in with miscellaneous marine equipment side-tied with flashers on all corners and will be monitoring VHF-FM Chan. 9, 16, 68A or 80. Mariners are requested to transit the area with caution. For more details or comments, contact Jason Tse at 415-300-5336.

Chart 18661

LNM: 23/24

**NORTHERN CALIFORNIA-SACRAMENTO RIVER-MARINE OPERATIONS**

The Dutra Group with U.S. Army Corps of Engineers Project #456852 will be conducting marine operations for the levee construction from 8 July, 2024 until 30 November, 2024 occurring along the Sacramento River between the Tower Bridge and Freeport Bridge. The work consists of furnishing all labor, materials, equipment, and all incidental related work to complete the levee rehabilitation. C/B TM20, C/B #12, along with a work boat, tugboat and rotation of flat deck barges will be monitoring VHF-FM Chan. 9, 16 & 68A. The crane barge, as well as the workboats will mobilize from Dutra's Rio Vista Yard to Sacramento. The flat deck barges will be in-transit between the job site and the San Rafael Rock Quarry and will be moored at pre-existing moorings along the Sacramento River during mobilization. This rotation will persist for most of the duration of the project. Work will occur during daylight hours but maneuvering of barges outside of the construction area may continue at all hours. At the end of each shift, the barges will be spudded in with flashers on all corners along with all other marine equipment. Mariners are requested to transit the area with caution. For more details or comments, contact Scott Brooks at 707-333-5029.

Chart 18661

LNM: 28/24

**NORTHERN CALIFORNIA-SACRAMENTO RIVER-MARINE OPERATIONS**

The Dutra Group will be conducting marine operations from 23 September, 2024 until 15 November, 2024 on Grand Island along the Sacramento River. A C/B TM 20, approximately 140ft x 50ft, a tugboat and a rotation of flat deck barges will be utilized on the project. At the end of each shift, the C/B TM20 will be spudded in with flashers on all corners along with all other marine equipment. Mariners are requested to transit the area with caution. For more details or comments contact tender tug PHYLLIS T OR BECKY T. All equipment will be monitoring VHF-FM Chan. 9, 16 & 68 or contact Scott Brooks at 707-333-5029.

Chart 18661

LNM: 39/24

**NORTHERN CALIFORNIA-SAN FRANCISCO BAY-BRIDGE**

GOLDEN GATE BRIDGE-Three 54' temporary under deck platforms; one 125' and one 1725' north of the south tower; and one 2125' south of the north tower have been installed at the bridge. Temporary platforms reduce vertical clearance at the bridge by no more than 14'. The bridge's maintenance travelers are in use during the project and will remain outboard of the furthest north and furthest south temporary platforms. The temporary platforms and maintenance travelers are lighted at night with all-round red lights (see PlatformLighting\_GG\_Bridge\_24Apr24.pdf at the end of this notice). For navigational safety the maintenance travelers can be moved by contacting the Golden Gate Bridge at 415-923-2220. Work is being conducted Monday through Saturday, 0700-1700 and 2100-0500. For conditions at the bridge, mariners can contact the contractor at 415-716-0384. For more details or comments contact the Coast Guard Bridge Office at 510-437-3516.

Chart 18649

LNM: 17/24

**NORTHERN CALIFORNIA-SAN FRANCISCO BAY-BRIDGE**

SAN MATEO-HAYWARD BRIDGE-Work continues on the causeway portion of the bridge, east of pier 38, 0700 to 1530, Monday through Friday, until 30 November, 2024. Various size barges will be used during the project, the largest being a 100' X 20' flexifloat barge. During the workday, barges will either be spudded down or tied to the bridge piers, no anchors or anchor line will be utilized. After regular working hours the unmanned barge will be left on-site. For the safety of navigation, the barges can be moved with one-hour advance notice. For conditions at the bridge mariners can contact Golden State Bridge, Inc., on VHF-FM Marine Radio Channels 13, 14, and 16 or by cell phone at 707-246-0725, 925-260-2104, or 925-382-7288. For more details or comments contact the Coast Guard Bridge Office at 510-437-3515.

LNM: 07/24

**NORTHERN CALIFORNIA-SAN FRANCISCO BAY-BRIDGE**

SAN MATEO/HAYWARD BRIDGE-Caltrans will be conducting dive operations at the bridge from 7am to 4pm 21-24 Oct, 2024. Diver and/or diver's breathing gas hose may be on or near the surface and heavy equipment is on the vessel's deck. Excessive wake may cause injury to deck crew as well as the diver. All mariners are requested to contact the Caltrans vessel, "OFFICIAL BUSINESS", on VHF-FM CH 16 or by cell 805-748-6011, approximately 30 minutes before transiting the bridge dive site. All vessels are requested to use extreme caution while transiting the dive site.

LNM: 36/24

**NORTHERN CALIFORNIA-SAN FRANCISCO BAY-BRIDGE**

WEST SPAN SAN FRANCISCO/OAKLAND BAY BRIDGE-During periods of rain, the operation of the navigation lights and fog signals on the bridge are unreliable and may be extinguished. Investigations to determine the cause of the unreliability of the lights and signals, and plans to repair, are in the works. Mariners should exercise caution when transiting the bridge until the navigation lights and fog signals are once again reliable. Report outages of the navigation lights and the fog signals to the U.S. Coast Guard at 510-219-4366.

Chart 18650

LNM: 52/23

**NORTHERN CALIFORNIA-SAN FRANCISCO BAY-BRIDGE**

GOLDEN GATE BRIDGE-On 17 November, 2024 from 8am until 2pm all bridge red pier lights, green center channel lights, fog signals, and RACON will be secured due to electrical maintenance. This maintenance will not occur if it is raining, foggy or dark in the in the bay. For further information contact the Coast Guard Bridge Office at 510-219-4366.

LNM: 43/24

**NORTHERN CALIFORNIA-SAN FRANCISCO BAY-DETERIORATING CONCRETE PILINGS**

Deteriorating concrete pilings above and below the waterline are present in the vicinity of the the south edge of Southampton Shoal Light (LLNR 5480). Mariners are requested to transit the area with caution. For more details or comments contact LT Miranda Brumbaugh at 510-437-2978 or Miranda.E.Brumbaugh@uscg.mil.

Chart 18649

LNM: 23/15

**NORTHERN CALIFORNIA-SAN FRANCISCO BAY-DREDGE OPERATIONS**

Lind Marine will conduct dredge operations at Paradise Cay in Tiburon, CA at 37-54-45N 122-28-31W from 0700 to 1900 daily, 15 Aug – 15 Oct 24. Vessels will transport dredged material to Alcatraz (SF-11) disposal site. Material handlers GRETA JEAN LIND, DIGBY, Tug BERNICE LIND, tug HERO, tug LYNX, Spud barge LB25, and 02 small 300 cy dump scows will be on site monitoring VHF-FM Chan. 11, 13, 14 and 16. Mariners are requested to transit the area with caution. For more details or comments contact Elizabeth Boyd at 707-805-4440.

Chart 18654

LNM: 34/24

**NORTHERN CALIFORNIA-SAN FRANCISCO BAY-GALLINAS CREEK-BRIDGE**

TEMPORARY FLOATING BRIDGE-PG&E will be installing a temporary floating bridge at the mouth of the creek in position 38-00-59N 122-30-06W to facilitate the reconstruction of electrical transmission towers on the north side of the creek. Installation of the temporary bridge will begin on 16 Sep, 2024 and will completely cross the creek on 12 Oct, 2024. The center of the bridge will have a removable span to allow the passage of vessels. The span will provide 24 feet of horizontal clearance and will remain open at all times unless equipment is being transported across the bridge. The upstream and downstream edges of the bridge will be lighted at night with steady burning red lights. When open, the upstream and downstream corners of the navigation span will be lighted at night with steady burning green lights (See enclosure GallinasCkFloatBrg\_Lighting.pdf at the end of this notice). The temporary floating bridge will be removed by 15 Jan, 2025. For further information contact the Coast Guard Bridge Office by email at D11Bridges@uscg.mil or by telephone at 571-607-2207.

LNM: 33/24

**NORTHERN CALIFORNIA-SAN FRANCISCO-DREDGING OPERATIONS**

The Dutra Group will be conducting dredging operations at the Port of San Francisco from 15 October, 2024 until 30 November, 2024 at 37.77972N -122.38666W for 24 hours, 7 days a week. Clamshell dredge HORTON, scow fleet of (5) split hull scows, tow tug LASSEN or similar and tender tug BECKY T will carry out dredging operations and will be monitoring VHF-FM Chan. 13, 14 & 82. Mariners are requested to transit the area with caution. For more details or comments, contact Ben Elias at 415-450-7426

Chart 18640

LNM: 42/24

**NORTHERN CALIFORNIA-SAN FRANCISCO-MARINE CONSTRUCTION**

Lind Marine will be conducting marine construction from 21 October, 2024 until 30 November, 2024 from 7:00am until 7:00pm at San Francisco East Harbor Marina or known as Gashouse Cove. Boaters will have access to docks in use. Active berths on Gates 8 and 10 may experience temporary



**NORTHERN CALIFORNIA-SAN FRANCISCO-MARINE CONSTRUCTION**

utility service interruptions during the work. The fuel dock will typically be accessible during work hours; however occasional serve disruptions may be necessary for the ingress and egress of large equipment. T/B BERNICE LIND, excavator Barge SONNEE DELIGHT and D/B ANDREW CARTER will be monitoring VHF-FM Chan. 11. Mariners are requested to transit the area with caution. For more details or comments, contact Scott Hynd at 415-971-4982.

Chart 18650

LNM: 43/24

**NORTHERN CALIFORNIA-SAN LEANDRO BAY-BRIDGE**

BAY FARM ISLAND HIGHWAY AND PEDESTRIAN BRIDGES-The pier protection system at the bridges have deteriorated and may not offer adequate protection for the bridges as well as vessels transiting the bridge. Mariners are urged to transit both bridges with caution. The bridge owner is in the process of designing a replacement pier protection system. For more details or comments contact the Coast Guard Bridge Office at 510-437-3514.

Chart 18649

LNM: 31/22

**NORTHERN CALIFORNIA-SAN LEANDRO-SUBMERGED VESSEL**

A partially capsized and submerged 40 foot twin masted sailing vessel at the entrance to San Leandro Marina at approximate coordinates 37-41-40N 122-11-37W. San Leandro Public works will be contracting removal of the vessel. To report updates or request additional information please contact Sector San Francisco Waterways Management Division at SFWaterways@uscg.mil.

Chart 18650

LNM: 09/24

**NORTHERN CALIFORNIA-SAN LORENZO RIVER-BRIDGE**

LAUREL STREET BRIDGE- Work will resume for the installation of a new water conveyance pipeline. To conduct the work, a bucket truck on the bridge deck will be utilized to suspend a mobile platform from the side of the bridge, vertical clearance will be reduced by 6-feet. Work will take place Monday through Friday, 7:00am to 4:30pm, from 3 September, 2024 through 15 November, 2024. There will be no in-water work or equipment used during this project. Mariners are urged to use caution while transiting the bridge. For further information contact the Coast Guard Bridge Office at (571) 607-5820.

Chart 18685

LNM: 41/24

**NORTHERN CALIFORNIA-SAN PABLO BAY-BUOY DEPLOYMENT**

US Army Corp of Engineers have deployed 3 meteorological recording stations in the San Pablo Bay area in the following coordinates:

38-04-32N 122-20-41W

38-01-51N 122-18-43W

37-52-39N 122-20-22W

For more details or comments contact Justin Yee at 415-503-6788.

Chart 18654

LNM: 31/23

**NORTHERN CALIFORNIA-SAN PABLO BAY-DREDGING OPERATIONS**

Dutra Group will be conducting dredging operations from 1-30 November, 2024 at the Phillips 66 Marine Terminal in Rodeo at 38.05620N 122.26378W. Tow tug, HEIDI L BRUSCO, LASSEN or similar will serve as the tow tug during disposal. The material from this Berth will disposed of at Montezuma Wetlands. Support will also be supplied by the tender tug BECKY T or PHYLLIS T. Clamshell dredge, DB BEAVER, DB24, or DB MORTY and a scow fleet of 5 split hull scows. All vessels and equipment will be monitoring VHF-FM Chan. 13, 14 & 80. Mariners are requested to transit the area with caution. For more details or comments, contact Chris Milan at 415-218-6739.

LNM: 42/24

**NORTHERN CALIFORNIA-STEAMBOAT SLOUGH-SUBMERGED VESSEL**

The Coast Guard received a report of a submerged 16' vessel north of Steamboat Slough at 38-11-21N 121-39-60W and is not visible from the waterline. There are no salvage plans at this time. Mariners are requested to transit the area with caution. For more details or comments contact USCG Sector San Francisco Waterways at 415-399-7443 or SFWaterways@uscg.mil.

Chart 18661

LNM: 09/24

**NORTHERN CALIFORNIA-STOCKTON & TRACY-MARINE CONSTRUCTION**

California Department of Water Resources (DWR) will be conducting the removal of the South Delta Temporary Barriers from 28 October, 2024 until 22 November, 2024 at the following locations:

Middle River: 37.8857N 121.4822W

Old River: 37.8103N 121.5428W

Grant Line Central: 37.8199N 121.4483W

Mariners are requested to transit the area with caution. For more details or comments contact, Karen Tolentino at 916-820-7683 or Karen.Tolentino@water.ca.gov.

Chart 18663

LNM: 41/24

**NORTHERN CALIFORNIA-STOCKTON-CONSTRUCTION**

Shimmick Construction will be constructing the cellular floodwall between the Smith Canal and the Stockton Deep-Water Shipping Channel of the San Joaquin River in the vicinity of the Port of Stockton. Construction will take place from 1 July, 2024 until 30 November, 2024 and will include dredging, pile driving, and backfilling operations. Nine vessels will be involved during the construction window consisting of 1 derrick barge RINGER #2, 1 Flexfloat crane barge G7718, 1 tugboat 194 Tug, 2 flat deck barges CMC 35, ST. NICHOLAS, and 4 skiff boats for personnel. The PRUDENT MARINER will be monitoring marine traffic through VHF-FM CH-14. Mariners are requested to transit the area with caution. For more details or comments, contact Grant Rose at 559-706-8159.

Chart 18663

LNM: 24/24

**NORTHERN CALIFORNIA-STOCKTON-DREDGING OPERATIONS**

The Dutra Group will be conducting dredging operations from 1 July, 2024 until 31 October, 2024. at the Port of Stockton 24 hours, 7 days a week at position 37-57-06N 121-19-55W with dredging and disposal operations. Material from the Port of Stockton will be disposed of by offloader at Robers Island at 37-58-26N 121-22-50W. Tow Tug HEIDI BRUSCO, Tender Tug BECK T or PHYLLIS T will be monitoring 13, 14 & 80A. Mariners are

**NORTHERN CALIFORNIA-STOCKTON-DREDGING OPERATIONS**

requested to transit the area with caution. For more details or comments, contact Dennis Salyers at 415-497-5289.

Charts: 18661 18663

LNM: 23/24

**NORTHERN CALIFORNIA-TOMALES POINT-SUBMERGED VESSEL**

The U.S. Coast Guard Sector San Francisco received a report of a submerged 14' pleasure craft near Lawson's Landing in approximate position 38-13-21N 122-50-34W. Mariners are requested to transit the area with caution. For more details or comments, contact Sector San Francisco Waterways at SFWATERWAYS@uscg.mil.

Chart 18640

LNM: 21/24

**SOUTHERN CALIFORNIA – MARINA DEL REY AND SANTA MONICA BAY - WATERWAYS ANALYSIS AND MANAGEMENT SYSTEM (WAMS) STUDY**

The Coast Guard is conducting a Waterways Analysis and Management System (WAMS) study of Marina Del Rey and Santa Monica Bay until 21 November, 2024. The study focuses on the area's aids to navigation system, waterborne commerce, marine casualty information, port/harbor resources, emergency response plans, routine and emergency communication capabilities, and future development projects. Furthermore, this study seeks to obtain data on the effectiveness of the system of Aids to Navigation, as well as other waterway safety concerns. Any interested company or individual wishing to provide comments or participate in a user survey may do so via link at: <https://www.research.net/r/TYQVBZ9> or contact LTJG Rubymar Sebastian at Rubymar.sebastianechevarria@uscg.mil or via phone at (571)-613-2930.

Chart 18744

LNM: 36/24

**SOUTHERN CALIFORNIA – OCEANSIDE AND DEL MAR BOAT BASIN - WATERWAYS ANALYSIS AND MANAGEMENT SYSTEM (WAMS) STUDY**

The Coast Guard is conducting a Waterways Analysis and Management System (WAMS) study of Oceanside and Del Mar Boat Basin until 21 November, 2024. The study focuses on the area's aids to navigation system, waterborne commerce, marine casualty information, port/harbor resources, emergency response plans, routine and emergency communication capabilities, and future development projects. Furthermore, this study seeks to obtain data on the effectiveness of the system of Aids to Navigation, as well as other waterway safety concerns. Any interested company or individual wishing to provide comments or participate in a user survey may do so via link at: <https://www.research.net/r/QJSPZ78> or contact LTJG Rubymar Sebastian at Rubymar.sebastianechevarria@uscg.mil or via phone at (571)-613-2930.

Chart 18758

LNM: 36/24

**SOUTHERN CALIFORNIA – SAN MATEO POINT-SAN MATEO POINT LIGHT DISESTABLISHMENT**

The U.S. Coast Guard has disestablished the San Mateo Point Light (LLNR 80). Direct any questions, comments, or concerns to SMB-D11ALAMEDA-SignalManagement@uscg.mil.

Charts: 501 18020 18022 18740 18774

LNM: 25/24

**SOUTHERN CALIFORNIA- OFFSHORE CATALINA ISLAND- AUTONOMOUS UNDERWATER VEHICLE OPERATIONS**

Boeing will be conducting autonomous underwater vehicle operations from 22 January through 30 January 2025.

OPAREA 1:

33-42-25N 118-19-55W

33-39-47N 118-21-36W

33-41-13N 118-24-40W

33-43-48N 118-22-48W

OPAREA3:

33-26-34N 118-26-55W

33-25-33N 118-23-59W

33-25-36N 118-21-19W

33-29-15N 118-18-36W

33-31-35N 118-23-31W

33-28-11N 118-26-55W

M/V AMERICAN ISLANDER will be monitoring VHF-FM Chan. 13, 14 & 16. Mariners are requested to transit the area with caution. For more details or comments, contact Sector Los Angeles/ Long Beach at 310-521-3860.

Chart 18740

LNM: 03/24

**SOUTHERN CALIFORNIA- SAN DIEGO-MISSION BAY-MARINE EVENT**

The Mission Bay Yacht Club will be sponsoring the annual Mission Bay Parade of Lights on 14 December, 2024, from 5:30pm until 8:00pm. The parade will consist of approximately 65 vessels, starting south of Fiesta Island, proceeding northwest to Sail Bay, then proceeding east to just south of De Anza Cove. A special local regulation will be enforced for this event from 5:30pm until 8:00pm. No vessels may enter, transit through, or anchor within the event area unless authorized by the Captain of the Port or a designated representative during this time. Mariners are requested to transit the area with caution. For more details or comments, contact, John Campbell at 858-735-3146.

Chart 18741

LNM: 41/24

**SOUTHERN CALIFORNIA-ANAHEIM BAY-BRIDGE**

ADMIRALTY DRIVE BRIDGE- The City of Huntington Beach will be conducting in-water work during bridge rehabilitation starting 1 July, 2024. The use of scaffolding, and floating work platforms moored at piers, will reduce the vertical clearance by 4ft and limit the horizontal clearance to 37ft. Mariners are requested to transit the area with caution. For more information, contact the Coast Guard Bridge at 510-437-3461 or by email at D11Bridges@uscg.mil.

Chart 18749

LNM: 31/24

**SOUTHERN CALIFORNIA-DANA POINT-AUV OPERATIONS**

Anduril Industries will be conducting Autonomous Underwater Vehicle (AUV) operations from 26 August, 2024 until 31 December, 2024 in the vicinity of Dana Point. The M/V Pacific Alliance will be conducting in operations bounded by the following coordinates:

Area 1:

33-26-00N 117-39-57W

33-17-33N 117-50-23W

**SOUTHERN CALIFORNIA-DANA POINT-AUV OPERATIONS**

33-12-16N 117-41-44W  
33-22-36N 117-39-57W  
33-24-21N 117-38-01W  
Area 2:  
33-27-02N 117-42-07W  
33-25-39N 117-40-24W  
33-24-33N 117-41-47W  
33-27-17N 117-44-46W

Area 3:  
33-24-22N 117-38-01W  
33-17-37N 117-33-24W  
33-13-12N 117-26-24W  
33-10-46N 117-28-16W  
33-19-37N 117-40-32W  
33-22-36N 117-39-59W

M/V PACIFIC ALLIANCE will be monitoring VHF-FM Chan. 16. Mariners are requested to transit the area with caution. For more details or comments contact Cam Green at 1-949-512-1312.

Chart 18740

LNM: 31/24

**SOUTHERN CALIFORNIA-LONG BEACH-MARINE CONSTRUCTION**

CPS Coastal Permits, Inc. will be conducting marine construction from 16 November, 2024 until 30 December, 2025 near Long Beach at position 33.764379N 118.11991W. Removal of 21,360 square feet of existing floating docks and installation of approximately 21,151 square feet of new floating docks in approximately the same location and configuration as the existing structures. All existing gangways and pilings are to be reused. A 35 ft. work boat, (4) 24 ft. barges, (1) 16x2 barge, and (2) 14 ft. boats will be monitoring VHF-FM Chan. 16. Mariners are requested to transit the area with caution. For more details or comments, contact Greg Buchanan at 714-822-5214.

Chart 18740

LNM: 43/24

**SOUTHERN CALIFORNIA-LOS ANGELES-MARINE CONSTRUCTION**

The Reyes/Larison Joint Venture (RLJV) will be conducting marine construction from 28 December, 2023 until 3 January, 2025 at The Port of Los Angeles Berths 168, 176-182 at 33-45-38N 118-15-40W. T/B PATCONA II/LARCONA, T/B DURANGO, DB VENTURA, DB LONG BEACH, DB LOS ANGELES, work skiffs and work barges will be monitoring VHF-FM Chan. 13 & 65. Mariners are requested to transit the area with caution. For more details or comments, contact Alex Lopez 909-270-6343.

Charts: 18746 18749

LNM: 14/24

**SOUTHERN CALIFORNIA-LOS ANGELES/LONG BEACH HARBOR-BRIDGE**

VINCENT THOMAS BRIDGE-A 180 ft temporary maintenance platform continues to move west from the east tower. The platform reduces vertical clearance of the bridge by 5.5 ft. The upstream and downstream corners and every 50' along the upstream and downstream side of the platform is lighted at night with steady burning red lights (see V\_Thomas\_Platform\_Lighting1.pdf at the end of this notice). Work will take place during daylight hours, Monday through Friday. For conditions at the bridge mariners can contact 213-479-4138, 213-479-1144 or 310-261-9552. For more details or comments contact the Coast Guard Bridge Office at 510-437-3516.

Chart 18749

LNM: 30/22

**SOUTHERN CALIFORNIA-MORRO BAY-MARINE CONSTRUCTION**

Associated Pacific Constructors, Inc. will be conducting marine construction from 1 October, 2024 until 19 November, 2024 at Inner Harbor Morro Bay at 35-22-14N 120-51-24W 24 hours a day. W/B MERI and T/B BALANA will be monitoring VHF-FM Chan. 16. Mariners are requested to transit the area with caution. For more details or comments contact Associated Pacific Constructors, Inc. at 805-234-5055 or paul@associatedpacific.com.

Chart 18022

LNM: 39/24

**SOUTHERN CALIFORNIA-MORRO BAY-WIND ENERGY PROJECT**

The Morro Bay Wind Energy Area includes the Even Keel Wind Project as one of the three leaseholders. EKW is providing their Final Fisheries Communication Plan that can be accessed at Even Keel Wind Project website <https://evenkeelwind.invenenergy.com/documents> this Plan is a living document that will continue to be updated as needed. Please provide any feedback on this plan via email to Laura.Casali@stantec.com.

Chart 18700

LNM: 44/23

**SOUTHERN CALIFORNIA-MORRO BAY-WIND ENERGY PROJECT**

Equinor Wind US LLC, leaseholder for the Bureau of Ocean Energy Management Lease Area OCS-P 0563, has developed a Fisheries Communication Plan (FCP) which is available for public comment. The FCP overviews the plan for engagement with the region's fishing community during development of the Equinor California Offshore Wind Project. The FCP is available at [www.equinorcalifornia.com](http://www.equinorcalifornia.com). Comments on the plan, and any questions about the project, can be sent to Elizabeth Marchetti at [emarc@equinor.com](mailto:emarc@equinor.com) or 401-954-2902.

Chart 18700

LNM: 46/23

**SOUTHERN CALIFORNIA-OCEANSIDE-SECURED PIER LIGHT**

Oceanside Pier Light has been secured after pier fire in Oceanside at 33-11-30N 117-23-20W. Mariners are requested to transit the area with caution. For more details contact Sector San Diego at 619-278-7033.

Chart 18740

LNM: 28/24

**SOUTHERN CALIFORNIA-OFFSHORE CALIFORNIA-HAZARDOUS OPERATIONS**

Hazardous operations will be conducted for Western Range 2431 in support of Western Range operation W8275 from 11:31pm on 5 November, 2024 until 5:37pm on 10 November, 2024. Hazardous operation areas are bounded by the following coordinates:

Hazard Area A:  
34-38-00N 121-23-00W  
34-38-00N 120-52-00W  
34-44-00N 120-35-00W

**SOUTHERN CALIFORNIA-OFFSHORE CALIFORNIA-HAZARDOUS OPERATIONS**

34-55-00N 120-35-00W  
34-56-00N 120-57-00W  
34-56-00N 121-22-00W

Hazard Area B:

34-16-00N 124-31-00W  
34-37-00N 124-33-99W  
34-53-00N 121-58-00W

34-33-00N 121-56-00W (CLOSING THE FIRST POINT)

Mariners are advised to remain clear of these areas for the duration of operations. For more details or comments contact 2ROPS.DOS@US.AF.MIL 805-606-8825 or on VHF-FM Chan. 05, 06 or 16.

Charts: 18600 18620 18640 18680 18700 18720 18740

LNM: 43/24

**SOUTHERN CALIFORNIA-OFFSHORE CALIFORNIA-HAZARDOUS OPERATIONS**

Hazardous operations will be conducted for Starlink g9-9 from 4:30am on 29 October, 2024 until 6:33am on 4 November, 2024. Hazardous operation areas are bounded by the following coordinates:

Hazard Area A:

34-40-00N 120-38-00W  
34-40-00N 120-24-00W  
34-14-00N 120-02-00W

32-37-00N 118-51-00W

32-35-00N 118-52-00W

34-34-00N 120-40-00W

34-40-00N 120-38-00W(CLOSING THE FIRST POINT)

Mariners are advised to remain clear of these areas for the duration of operations. For more details or comments contact Space X at recovery@spacex.com or on VHF-FM Chan. 05, 06 or 16.

Charts: 18600 18640 18680 18700 18720 18740

LNM: 44/24

**SOUTHERN CALIFORNIA-OFFSHORE CALIFORNIA-OCEANOGRAPHIC OPERATIONS**

The Scripps Institution of Oceanography will be conducting 24 hour surface to floor oceanographic operations from 26 October, 2024 until 3 November, 2024 in the vicinity of the following waypoints:

34.30389N 120.815W

35.91889N 125.04W

36.18667N 125.04389W

36.1075N 124.80778W

35.91639N 124.71083W

35.72611N 124.80889W

35.64722N 125.04389W

35.72611N 125.27889W

35.91638N 125.37722W

36.1075N 125.28W

35.92333N 125.05194W

The exact timing and location of each station will depend on operational concerns and weather conditions. During over-the-side operations, vessel will be restricted in ability to maneuver; all traffic requested to give R/V SALLY RIDE a wide berth. R/V SALLY RIDE will monitor VHF-FM Chan. 13 & 16. Mariners are requested to transit the area with caution. For more details or comments, contact vessel master at sr-master@ucsd.edu or Heather Galiher at 858-226-8761.

Charts: 18680 18700

LNM: 43/24

**SOUTHERN CALIFORNIA-OFFSHORE CARPINTERIA-SURVEY OPERATIONS**

Furgo USA Marine Inc. will be conducting a bathymetric and geophysical survey from 25 October, 2024 until 30 November, 2024 offshore Carpinteria outlined in the following coordinates:

34.39248417 -119.5275461

34.38423386 -119.5003626

34.32921169 -119.5250365

34.33745288 -119.5570941

M/V JULIE ANN will have limited maneuverability during operations and will be monitoring VHF-FM Chan. 16. Mariners are requested to transit the area with caution. For more details, contact Cindy Pratt at 805-289-3807.

Chart 18720

LNM: 41/24

**SOUTHERN CALIFORNIA-OFFSHORE GROVER BEACH-CABLE BURIAL**

Offshore Support Vessel NAUTILUS will be conducting cable burial and inspections for the Bifrost Cable System offshore Grover Beach down to the 1800m isobath from 25 October, 2024 until 11 November, 2024 at the following positions. The ship will be on the sea floor and using remote operated vehicle (ROV). The ROV will restrict vessel maneuverability and pose potential collision and entanglement hazard to mariners and will conduct a post-lay inspection and burial using a remote operated vehicle (ROV). Fishermen are requested to remove all fishing gear or traps within 1 nautical mile of the alignment. Mariners are requested to transit the area with caution. For more details or comments, contact Erique Rodriguez at e.rodriguez@acmships.com.

Chart 18700

LNM: 43/24

**SOUTHERN CALIFORNIA-OFFSHORE MORRO BAY-FISHERIES COMMUNICATION PLAN AVAILABLE**

Golden State Wind LLC, leaseholder for the Bureau of Ocean Energy Management Lease Area OCS-P 0564, has developed a Fisheries Communication Plan (FCP) which is available for public comment. The FCP overviews the plan for engagement with the region's fishing community during development of the Golden State Wind Project. The FCP is available at [https://www.goldenstatewind.com/wp-content/uploads/2023/09/GSW\\_Fisheries-Comms-Plan\\_2023.08.23\\_clean\\_508-compressed.pdf](https://www.goldenstatewind.com/wp-content/uploads/2023/09/GSW_Fisheries-Comms-Plan_2023.08.23_clean_508-compressed.pdf) Comments on the plan, and any questions about the project, can be sent to Rachel Mahler at rachel.mahler@oceanwinds.com or 805-680-8138.

Chart 18703

LNM: 45/23

**SOUTHERN CALIFORNIA-OFFSHORE SAN DIEGO -AUTONOMOUS UNMANNED MARITIME VEHICLE OPERATIONS**

Liquid Robotics (www.liquid-robotics.com) will be conducting continuous autonomous, unmanned maritime vehicle operations from 16 August, 2024 through 31 January, 2025. Operations will be bounded by the following coordinates:

- 34-01-18N 121-11-09W
- 34-01-18N 119-10-41W
- 32-56-25N 119-10-25W
- 32-56-26N 119-11-26W

Operations consist of marine data collection. Wave Gliders carry no fuel, lubricants, or hydrocarbons, are wave powered, remotely attended from our Wave Glider Operations Center (WGOC), moving at speeds of typically 1kt, and will give way if encountered by a vessel. They are surfboard-size, black in color, with a contact plaque and mast extending 1 meter above the surface supporting a flag and topped with a solid white light for use at night. Mariners are urged to transit the area with caution. For more details or comments contact, Liquid Robotics Operations Center at 408-636-4205 or support@liquid-robotics.com.

Charts: 18720 18740

LNM: 34/24

**SOUTHERN CALIFORNIA-OFFSHORE SAN DIEGO-OCEANOGRAPHIC OPERATIONS**

The Scripps Institution of Oceanography will be conducting surface to floor oceanographic operations from 2-3 November, 2024 at coordinates:

- 32.631389N 117.38306W
- 32.641111N 117.3875W
- 32.65694N 117.39861W
- 32.70889N 117.45W
- 32.69417N 117.55389W
- 32.60778N 117.49583W

The exact timing and location of each station will depend on operational concerns and weather conditions. During over-the-side operations, vessel will be restricted in ability to maneuver; all traffic requested to give ROBERT GORDON SPROUL a wide berth. R/V ROBERT GORDON SPROUL will be monitoring VHF-FM Chan. 13 & 16. Mariners are requested to transit the area with caution. For more details or comments, contact Heather Galiher at 858-226-8761.

Chart 18740

LNM: 44/24

**SOUTHERN CALIFORNIA-OFFSHORE SANTA BARBARA-UNDERWATER PIPELINE INSPECTION**

Aqueos will be conducting underwater pipeline and platform inspection work with a ROV from 10 October, 2024 until 5 December, 2024 at Sable SYU State Pipelines to shore, Platform Heritage, Platform Harmony and Platform Hondo at positions:

- 34.348378N -120.04839W
- 34.454815N -120.033068W
- 34.378208N -120.111897W
- 34.397993N -120.142616W
- 34.339351N -120.290816W
- 34.35878N -120.290236W

M/V LAUREN C, a 225' LOA, red hull and white superstructure with a typical supply boat configuration and will be monitoring VHF-FM Chan. 16. Mariners are requested to transit the area with caution. For more details or comments, contact Jason Smith at 805-676-4330 or 805-205-3156.

Chart 18720

LNM: 42/24

**SOUTHERN CALIFORNIA-OFFSHORE-HAZARDOUS OPERATIONS**

There will be hazardous operations conducted in the Fleet Training Area Hot (FLETA HOT) until 1 January, 2025. Mariners are requested to transit the area with caution. For more details or comments contact Henry Rogel at 619-545-1757

**A. HAZARDOUS OPERATIONS REQUEST (FLETA HOT):**

(1) IN AREA BOUNDED BY:

- 32-33-00N 118-25-00W
- 32-35-00N 118-16-00W
- 32-35-00N 117-40-00W
- 31-55-00N 117-40-00W
- 31-55-00N 118-25-00W
- 32-33-00N 118-25-00W

TO POINT OF ORIGIN.

**B. HAZARDOUS OPERATIONS REQUEST (SOAR):**

(1) IN AREA BOUNDED BY:

- 32-52-42N 119-11-58W
- 33-08-04N 118-52-05W
- 33-08-04N 118-46-02W
- 33-03-52N 118-41-48W
- 33-02-32N 118-43-33W
- 32-58-53N 118-43-31W
- 32-47-40N 118-32-21W
- 32-36-55N 118-45-00W
- 32-36-55N 118-56-57W

TO POINT OF ORIGIN.

**C. HAZARDOUS OPS REQUEST (SHOBA WITH BOTH EXTENSIONS):**

(1) AREA BOUNDED BY FOLLOWING COORDS:

- 32-55-00 N 118-25-00 W
- 32-55-00 N 118-15-00 W
- 32-40-00 N 118-15-00 W
- 32-40-00 N 118-35-00 W
- 32-45-00 N 118-35-00 W

TO POINT OF ORIGIN.

**D. HAZARDOUS OPERATIONS REQUEST (MOORED BUOYS IN PYRAMID COVE)**

(1) IN AREA BOUNDED BY:

**SOUTHERN CALIFORNIA-OFFSHORE-HAZARDOUS OPERATIONS**

- ANCHOR 1: 15FT, 32-47-38N 118-25-49W
- ANCHOR 2: 15FT, 32-47-24N 118-25-12W
- ANCHOR 3: 20FT, 32-47-36N 118-24-53W
- ANCHOR 4: 20FT, 32-47-11N 118-25-26W
- ANCHOR 5: 25FT, 32-47-19N 118-25-00W
- ANCHOR 6: 30FT, 32-47-07N 118-24-51W
- ANCHOR 7: 210FT, 32-47-24N 118-24-27W
- ANCHOR 8: 170FT, 32-47-24N 118-25-59W
- ANCHOR 9: 243FT, 32-47-19N 118-24-27W
- ANCHOR 10: 227FT, 32-47-19N 118-25-59W
- ANCHOR 11: 00FT, 32-47-45N 118-24-18W
- ANCHOR 12: 00FT, 32-46-56N 118-24-18W
- ANCHOR 13: 00FT, 32-46-56N 118-26-13W
- ANCHOR 14: 00FT, 32-47-45N 118-26-13W.

Charts: 18700 18720 18740

LNLM: 01/24

**SOUTHERN CALIFORNIA-OFFSHORE-HAZARDOUS OPERATIONS LIVE FIRE**

There will be hazardous operations conducted in the Fleet Training Areas (FLETA HOT, SOAR, and SHOBA WITH BOTH EXTENSIONS) until 1 January, 2025. Mariners are requested to stay clear of these areas. The hazardous operations include live fire. For more details or comments contact Darrel Rumsey at 619-545-1744 or Henry Rogel at 619-545-1757.

**A. HAZARDOUS OPERATIONS REQUEST (FLETA HOT FOR LIVE FIRE):**

- (1) IN AREA BOUNDED BY:
  - 32-33-00N 118-25-00W
  - 32-35-00N 118-16-00W
  - 32-35-00N 117-4-000W
  - 31-55-00N 117-40-00W
  - 31-55-00N 118-25-00W
  - 32-33-00N 118-25-00W (TO POINT OF ORIGIN).

**B. HAZARDOUS OPERATIONS REQUEST (SOAR FOR LIVE FIRE)**

- (1) IN AREA BOUNDED BY:
  - 32-52-42N 119-11-58W
  - 33-08-04N 118-52-05W
  - 33-08-04N 118-46-02W
  - 33-03-52N 118-41-48W
  - 33-02-32N 118-43-33W
  - 32-58-53N 118-43-31W
  - 32-47-40N 118-32-21W
  - 32-36-55N 118-45-00W
  - 32-36-55N 118-56-57W (TO POINT OF ORIGIN).

**C. HAZARDOUS OPS REQUEST (SHOBA WITH BOTH EXTENSIONS FOR LIVE FIRE):**

- (1) AREA BOUNDED BY FOLLOWING COORDS:
  - 32-55-00N 118-25-00W
  - 32-55-00N 118-15-00W
  - 32-40-00N 118-15-00W
  - 32-40-00N 118-35-00W
  - 32-45-00N 118-35-00W (TO POINT OF ORIGIN).

**D. HAZARDOUS OPS REQUEST (PYRAMID COVE FOR MOORED BUOYS)**

(1) AREA BOUNDED BY FOLLOWING COORDS:

- | DEPTH             | LAT       | LONG       |
|-------------------|-----------|------------|
| ANCHOR 1: 15FT-   | 32-47-38N | 118-25-49W |
| ANCHOR 2: 15FT-   | 32-47-24N | 118-25-12W |
| ANCHOR 3: 20FT-   | 32-47-36N | 118-24-53W |
| ANCHOR 4: 20FT-   | 32-47-11N | 118-25-26W |
| ANCHOR 5: 25FT-   | 32-47-19N | 118-25-00W |
| ANCHOR 6: 30FT-   | 32-47-07N | 118-24-51W |
| ANCHOR 7: 210FT-  | 32-47-24N | 118-24-27W |
| ANCHOR 8: 170FT-  | 32-47-24N | 118-25-59W |
| ANCHOR 9: 243FT-  | 32-47-19N | 118-24-27W |
| ANCHOR 10: 227FT- | 32-47-19N | 118-25-59W |
| ANCHOR 11: 00FT-  | 32-47-45N | 118-24-18W |
| ANCHOR 12: 00FT-  | 32-46-56N | 118-24-18W |
| ANCHOR 13: 00FT-  | 32-46-56N | 118-26-13W |
| ANCHOR 14: 00FT-  | 32-47-45N | 118-26-13W |

Charts: 18020 18720 18740

LNLM: 05/24

**SOUTHERN CALIFORNIA-OFFSHORE-SURVEY OPERATIONS**

Atlas Wind will be conducting geophysical and geotechnical surveys until 01 December, 2024, offshore of the Morro Bay Area and within the Equinor Offshore Wind Lease Area (OCS-P 0563). Operations will be bounded by the following coordinates or see enclosure ATLAS-SURVEY OPERATIONS.pdf below:

- 35-47-56N 122-09-23W
- 35-07-05N 121-39-32W
- 35-06-45N 120-37-53W
- 35-33-17N 121-07-01W
- 35-33-13N 121-32-11W
- 35-47-56N 122-09-23W

**SOUTHERN CALIFORNIA-OFFSHORE-SURVEY OPERATIONS**

Surveys will occur within the Lease Area and along areas inshore of the Lease within potential submarine export cable sitting corridors. These potential submarine export cable sitting corridors will be narrow areas that are up to 6,562 feet (2,000 meters) wide and will connect the Lease Area and potential cable landfall locations. During the survey the M/V Island Pride and R/V Taku will be deploying subsurface survey equipment along the route corridor and in the Lease Area (OCS-P 0563) and will be restricted in their ability to maneuver. M/V ISLAND PRIDE and R/V TAKU will be monitoring VHF-FM Chan. 16. Mariners are requested to transit the area with caution. For more details or comments contact Matthew Moulton at 1-805-236-0756.

Charts: 18700 18720 18740

LNM: 15/24

**SOUTHERN CALIFORNIA-PORT HUENEME-NAVAL FIELD EXERCISE**

Naval Information Warfare Center, Pacific (NIWC-PAC) is conducting an offshore experimentation from 26 October until 3 November 2024 from 8:00am until 6:00pm daily. The following points define the OPAREA:

34.08361N 119.22W  
34.05083N 119.20805W  
34.04472N 119.25W  
34.07722N 119.25944W

A 5x8-meter High-Speed Maneuverable Surface Targets (HSMST), 1x27-foot Rigid Hull Inflatable Boat (RHIB) with full cabin, and 1x24-foot Unmanned Surface Vessel (USV) will be monitoring VHF-FM Chan. 5 & 16. The HSMSTs will be operated locally and remotely operated from ashore facility in NBVC Port Hueneme, Bldg. 465. The SDSTs, HSMSTs, WAM-Vs, and sUSV will be operated locally to stage them and will be unmanned only during remote operations. Request a 1 nm standoff distance to all supporting vessels excluding the Port of Hueneme safety fairway. Report any interference with any supporting elements to the working channel. This is not a live-fire event. Mariners are requested to transit the area with caution. For more details contact, Event Test Director, Travis Moscicki at 561-613-5316 and on-water operations POC is Mark Patefield at 619-708-2429.

Chart 18720

LNM: 41/24

**SOUTHERN CALIFORNIA-SAN DIEGO BAY-BRIDGE**

CORONADO BAY BRIDGE MAINTENANCE-Scaffolding installed between piers 11-12, 12-13, and 13-14, reduces vertical clearance by no more than 8'. The upstream and downstream lower edges of the scaffolding are lighted at night with red lights. For more details or comments contact the Coast Guard Bridge Office at 510-437-3461.

Charts: 18772 18773

LNM: 13/20

**SOUTHERN CALIFORNIA-SAN DIEGO BAY-CONSTRUCTION PROJECT**

Marathon Construction Corporation will be conducting marine construction on damaged pilings, replacing floating docks and gangways, conducting dive operations, and installing electrical and mechanical utilities from 22 February, 2024 until 31 January, 2025 at Naval Amphibious Base Coronado, Piers 3, 17 and 21 at 32-40-50N 117-09-27W. Work will be performed mostly from a 60' X 120' crane barge, skiffs, and floating docks and will be monitoring VHF-FM Chan. 16. Mariners are requested to transit the area with caution. For more information or comments contact Timothy Meyer at 619-843-8975.

Charts: 18741 18765 18773

LNM: 07/24

**SOUTHERN CALIFORNIA-SAN DIEGO BAY-MARINE CONSTRUCTION**

R.E. Staite Engineering, Inc. will be conducting marine construction from 1 April, 2024 until 31 December, 2024 at BAE Systems San Diego facility, Pier 1, Pier 3 and Building 13 Wharf at 32-41-24N 117-08-41W. Vessel Spud Crane Barge RES 150, P/B JEANIE R, support barges, and skiffs will be monitoring VHF-FM Chan. 16. Mariners are requested to transit the area with caution. For more details or comments contact R.E. Staite Engineering, Inc. at 619-538-2761 or restaite@restaite.net.

Chart 18773

LNM: 09/24

**SOUTHERN CALIFORNIA-SAN DIEGO BAY-MARINE CONSTRUCTION**

R.E. Staite Engineering, Inc. will be conducting marine construction from 1 April, 2024 until 25 June, 2025 at the Drydock and adjacent area in San Diego Bay at the NASSCO waterfront facility 32-41-15N 117-08-24W. Vessels DB POINT LOMA, DB WILLIAM F, DB PALOMAR, RES 180, SCOW HAROLD M, SCOW CLARENCE D, SCOW ROB P, SCOW MIKE J, P/B JEANIE R, C/B JOHN DRAKE, RES SURVEY BOAT, TUG CUYAMACA, and various barges (80', 110' and 120') will be performing dredging and construction operations and will be monitoring VHF-FM Chan. 16. Mariners are requested to transit the area with caution. For more details or comments contact R.E. Staite Engineering at 619-233-0175.

Chart 18773

LNM: 12/24

**SOUTHERN CALIFORNIA-SAN DIEGO BAY-MARINE CONSTRUCTION**

Marathon Construction will be conducting marine construction at Naval Base Coronado from 4 January, 2024 until 31 March 2025 at 32-41-43N 117-13-51W. Mariners are requested to transit the area with caution. For more details or comments contact Dane Kost at 619-244-5522.

Chart 18765

LNM: 51/23

**SOUTHERN CALIFORNIA-SAN DIEGO BAY-MARINE EVENT**

Baja Ha-Ha LLC will be sponsoring the Baja Ha-Ha Send-Off Parade on 4 November, 2024 from 9:00am until 11:00am. The event will involve involving approximately 110 sailing vessels from throughout the harbor meeting in the vicinity of Shelter Island, then transiting out of the channel to open waters. Mariners are requested to transit the area with caution. For more details or comments, contact Donna Andre at 415-269-5165.

Chart 18741

LNM: 40/24

**SOUTHERN CALIFORNIA-SAN DIEGO BAY-MARINE EVENT**

The San Diego Fleet Week Association will be sponsoring the San Diego Fleet Week Veterans Day Boat Parade on 11 November, 2024, from 9:00am until 11:30am in San Diego Bay. The parade will consist of approximately 75 pleasure craft of various sizes, starting at the southern end of Shelter Island, proceeding northeast along the shoreline past Harbor Island, then southeast to the Tenth Avenue Marine Terminal, crossing the federal channel just before the Coronado Bridge, and then proceeding north to the Coronado Ferry Terminal. A special local regulation will be enforced for this event, encompassing all navigable waters around the parade location. For more details or comments, contact Bill Edwards at 619-708-5047.

Chart 18740

LNM: 40/24

**SOUTHERN CALIFORNIA-SAN DIEGO BAY-MARINE EVENT**

The San Diego Yacht Club will be sponsoring the Sinnhoffer Hot Rum Series sailboat races on 9 November, 23 November and 7 December, 2024, from 11:00am until 4:30pm each day. The event will consist of approximately 130 sailing vessels racing on a course starting in the vicinity of the San Diego Bay Channel Entrance, proceeding out to Coronado Roads, then returning to San Diego Bay. Mariners are requested to transit the area with caution. For more details or comments, contact Jeff Johnson at 619-933-9922.

Chart 18740

LNM: 40/24

**SOUTHERN CALIFORNIA-SAN DIEGO-DREDGING OPERATIONS**

Manson Construction Co. will be conducting dredging operations from 23 May, 2024 until 1 January, 2025 from 6:00pm until 6:00am Monday through Saturday at the Mole Pier Naval Base San Diego at 32-40-04N 117-07-16W. D/B NJORD, T/B JEFFERY M, S/B WAHOO, GULFPORT, ROCKPORT, EASTPORT, and MANSON 63 will be monitoring VHF-FM Chan. 13 & 16. Mariners are requested to transit the area with caution. For more details or comments contact Tim O'Neill at 562-762-5390.

Chart 18741

LNM: 19/24

**SOUTHERN CALIFORNIA-SAN DIEGO-FLOATING CYLINDER**

Sector San Diego received a report of a large metal cylinder floating in position 32-38-34N 117-09-09W on 22 April, 2024. The cylinder is approximately 15 feet in length, 5 feet in diameter and floating 5 feet above the waterline. Mariners are requested to transit the area with caution. For more details or comments contact Sector San Diego at 619-278-7033.

Chart 18765

LNM: 18/24

**SOUTHERN CALIFORNIA-SAN DIEGO-MARINE CONSTRUCTION**

R.E. Staite Engineering Inc. will be conducting marine construction for the repair and replacement of the existing Pier 302 at Naval Base Pt. Loma from 2 January, 2024 until 2 January, 2025 at 32-42-08N 117-14-09W. DB WILLIAM F, PB JEANIE R, PB JOHN DRAKE, RES 180 Barge, spud/crane barge and support barge RES 110 will be monitoring VHF-FM Chan. 16. Mariners are requested to transit at their slowest safe speed to minimize wake transit the area with caution. For more details or comments contact Tory Wagoner at 619-629-9733 or restaite@restaite.net.

Chart 18773

LNM: 50/23

**SOUTHERN CALIFORNIA-SAN DIEGO-MARINE EVENT**

The San Diego Yacht Club will be sponsoring the One Design Weekend Monthly Series in Coronado Roads, CA. 25 sailing vessels will be racing on courses starting at approximately 32-38-41N 117-11-35W with courses oriented 1.5 nautical miles into the wind direction. Races will be held on 10-11 August, 28-29 September, 12-13 October, 16-17 November, and 15 December, 2024, from 11:00am to 4:00pm each day. Mariners are requested to transit the area with caution. For more details or comments, contact Jeff Johnson at 619-933-9922.

Chart 18773

LNM: 48/23

**SOUTHERN CALIFORNIA-SAN DIEGO-OCEANOGRAPHIC BUOY DEPLOYMENT**

The City of San Diego Marine Biology Lab is conducting year-round monitoring with oceanographic buoys in the vicinity of the South Bay Ocean Outfall and Point Loma Ocean Outfall until December, 2024. Surface buoys are yellow and lighted equipped with AIS and run from ocean surface to ocean bottom. The Ocean Monitoring Program has two oceanographic moorings deployed at 32-40-12N 117-19-29W and 32-31-55N 117-11-13W. The M/V OCEANUS AND M/V MONITOR III when in the area will monitor VHF-FM Chan. 16. Mariners are requested to transit the area with caution. For more details or comments contact Adriano Feit at 619-758-2377 or 858-882-7055.

Charts: 18765 18772

LNM: 01/24

**SOUTHERN CALIFORNIA-SAN DIEGO-OCEANOGRAPHIC SURVEY**

The City of San Diego Marine Biology Lab is conducting year-round ocean monitoring sampling in the vicinity of the South Bay Ocean Outfall and Point Loma Ocean Outfall until 15 November, 2024. The Ocean Monitoring Program conducts trawl sampling, benthic sampling with a double Van Veen sediment grab, vertical CTD casts and horizontal tows with an undulating underwater vehicle, ROV surveys and multiple moorings are deployed in the region below. Ocean sampling will be conducted in an area bound by the following coordinates:

32-31-54N 117-11-11W

32-32-10N 117-11-57W

32-32-03N 117-12-06W

32-32-33N 117-11-56W

32-40-10N 117-19-22W

32-40-04N 117-19-34W

32-39-37N 117-19-32W

32-39-56N 117-19-39W

32-40-10N 117-16-55W

The M/V OCEANUS AND M/V MONITOR III when in the area will monitor VHF-FM Chan. 16. Mariners are requested to transit the area with caution. For more details or comments contact Adriano Feit at 619-758-2377 or 858-882-7055.

Charts: 18765 18772

LNM: 47/23

**SOUTHERN CALIFORNIA-SAN JOSE CREEK-GOLETA SLOUGH-BRIDGE**

STATE ROUTE 217 HIGHWAY BRIDGE- Caltrans has resumed in-water construction for the bridge replacement project through 30 November 2024. Due to the use of heavy construction equipment and the presence of a temporary trestle, mariners are requested to transit the area with extreme caution. For more information, contact the Coast Guard Bridge Office at 510-437-3461 or D11Bridges@uscg.mil.

Chart 18720

LNM: 22/24

**SOUTHERN CALIFORNIA-SAN NICOLAS ISLAND-COMMERCIAL FISHING OPERATIONS**

Ventura County Commercial Fishermen's Association member vessels will be operating within a 35 mile radius of San Nicolas Island between 1 January, 2024 and 31 December, 2024. Vessels can be expected in this area anytime wind and sea state is at a Beauford Scale of 4 or less. Gear will be marked with a flagged highflyer, radar reflector, lights and bouys. Please give a closest point of approach of 1/2 mile. Vessels can be contacted on VHF-FM Chan. 11 and 16. Mariners are requested to transit the area with caution. For more details and comments contact 805-448-4455.

Chart 18022

LNM: 42/23



**SOUTHERN CALIFORNIA-SANTA BARBARA-AQUACULTURE ESTABLISHMENT**

Ocean Rainforest will be establishing an Aquafarm, starting on 30 March, 2023 until 31 Decmeber, 2025 located located 4.3 NM South of Santa Barbara. The site is bound within four yellow boundary marker buoys with a flashing yellow light every 2 seconds (Fl Y2s) in the following positions:  
34-19-58.53N 119-42-45.72W  
34-20-10.12N 119-42-45.72W  
34-20-11.23N 119-42-07.24W  
34-19-59.64N 119-42-07.92W

In line with the outer boundary buoys are small unlit floats that are marking the anchors associated with the Aquaculture area, the total buoys marking the anchors are 12 on the long axis of each side and 2 between the corner buoys on the short axis. Within the boundary markers will be 188 buoys/floats, see Enclosure AQUACULTURE ESTABLISHMENT.pdf enclosure below. The interior buoys of the aquaculture are in the shape of a rectangle with the outer edge marked with yellow buoys, every other buoy has a flashing yellow light flashing every 2 seconds (Fl Y2s). Within the rectangle are 135 small unlit floats marking the cultivation lines. Mariners are advised to remain clear of this area as entanglement with associated equipment may occur. Vessel DANNY C will be conducting the deployment and monitoring VHF-FM Chan. 7 and 16. For more details or comments contact Ocean Rainforest Inc at 805-722-9601 or eliza@oceanrainforest.com.

Charts: 18720 18725

LNM: 11/23

**SOUTHERN CALIFORNIA-SEASIDE-DREDGING OPERATIONS**

Manson Construction will be conducting dredging operations of a borrow area located offshore of Seaside at 33.70701N 118.10213W with pump-out operations onton San Clemente Beach at 33.41427N 117.62591W from 6-30 November, 2024. Dredging and disposal operations to be conducted 7 days per week, 24 hours per day. Heavy beach equipment use is limited to daylight hours. DREDGE BAYPORT, M/V JOHN M, M/V AGGIE, and T/B TERRI L. BRUSCO will be monitoring VHF-FM Chan. 13, 16, 66 & 67. To complete pump-off operations, the Bayport will sail to a pump ashore buoy located offshore of the beach, hookup, and pump the load onto the beach. Adjacent to the San Clemente Pier, the pump ashore buoy is attached to ~400 feet of floating pipe, which is then, in turn, attached to 2,200 feet of submerged steel pipeline. Stand-up danger buoys are attached to the submerged pipeline at 150' intervals from the first 750' of pipeline, extending offshore. The Bayport will be transiting between the Borrow Site and the Pump Ashore Buoy, multiple times per day, 24 hours per day. The dredge will be maneuvering back and forth within the borrow site area during dredging operations. Mariners are urged to maintain a 300 ft buffer from the dredge and pump ashore buoy. Mariners are urged to transit at their slowest safe speed to minimize wake and proceed with caution after passing arrangements have been. For more details or comments contact Benjamin Herbay at 904-716-4154.

Chart 18740

LNM: 43/24

**UNITED STATES COAST GUARD-NAVCEN-SURVEY**

We are eager to understand the primary reason for your visit to the Navigation Center website and how you use it, whether for recreational boating, professional purposes, data requests, educational reasons, or otherwise. Your feedback on the website's ease of use, ability to find information, and if it's your primary source for navigation-related information is crucial. We are committed to improving your experience and welcome any suggestions to enhance the site's usability, information accessibility, and overall efficiency. Your insights are invaluable in helping us better meet your navigation needs. Navigation Center Website Feedback Survey (surveymonkey.com)

LNM: 15/24

---

---

**SECTION VIII - LIGHT LIST CORRECTIONS**

An Asterisk \*, indicates the column in which a correction has been made to new information

---

(1) No.	(2) Name and Location	(3) Position	(4) Characteristic	(5) Height	(6) Range	(7) Structure	(8) Remarks
<b>None</b>							

---

---

---

**PUBLICATION CORRECTIONS**

**None**

---

---

**ENCLOSURES**

**REPORT OF DELAY AT DRAWBRIDGE**

[Delay\\_Report\\_11-2017.pdf](#)

Use link above to Report a Delay at a Drawbridge.

LNM: 06/07

**SOUTHERN CALIFORNIA-PORTS OF LOS ANGELES/LONG BEACH-LA/LB HARBOR-BRIDGE**

[V\\_Thomas\\_Platform\\_Lighting1.pdf](#)

See link above for platform lighting for Vincent Thomas Bridge.

LNM: 28/19

**NORTHERN CALIFORNIA-DELTA & RIVERS-AMERICAN RIVER-BRIDGE**

[AmRiv\\_SiltCurtain\\_BargeLocation.pdf](#)

CAPITAL CITY HWY (ROUTE 51) BRIDGE-See link above for barge and silt curtain locations.

LNM: 22/22

**NORTHERN CALIFORNIA-SAN FRANCISCO BAY-BRIDGE**

[PlatformLighting\\_GG\\_Bridge\\_24Apr24.pdf](#)

GOLDEN GATE BRIDGE-Temporary Platform Location and Lighting revised 24 Apr 24.

LNM: 17/24

**NORTHERN CALIFORNIA-DELTA & RIVERS-SACRAMENTO RIVER-BRIDGE**

[ButteConstructionLightng-BuoyLine.pdf](#)

REPLACEMENT BUTTE CITY BRIDGE-See link above for temporary construction trestle and lighting and proposed buoy line..

LNM: 36/22

**NORTHERN CALIFORNIA-SAN FRANCISCO BAY-GALLINAS CREEK-BRIDGE**

[GallinasCkFloatBrg\\_Lighting.pdf](#)

PG&E TEMPORARY FLOATING BRIDGE-See link above for temporary bridge lighting.

LNM: 33/24

**CALIFORNIA - SANTA BARBARA - TRAFFIC SEPARATION (TSS) EXTENDED**

[TSS\\_Circ.78.pdf](#)

See link above.

LNM: 21/23

**CALIFORNIA - SANTA BARBARA TSS AND CHANNEL ISLANDS ATBA GRAPHIC**

[new-protections.jpg](#)

See link above.

LNM: 21/23

**CALIFORNIA-CALIFORNIA COAST-VOLUNTARY VESSEL SPEED REDUCTION**

[2024 NOAA USCG EPA VSR Announcement.pdf](#)

See link above.

LNM: 16/24

**SOUTHERN CALIFORNIA-OFFSHORE-SURVEY OPERATIONS**

[ATLAS-SURVEY OPERATIONS.pdf](#)

see enclosure below.

LNM: 15/24

**SOUTHERN CALIFORNIA-VENTURA-DREDGE AND DIVING OPERATION**

[VENTURA-DREDGE-DIVING OPERATION.pdf](#)

See link above

LNM: 21/24

**SOUTHERN CALIFORNIA-SANTA BARBARA-AQUACULTURE ESTABLISHMENT**

[AQUACULTURE ESTABLISHMENT.png](#)

see link above.

LNM: 03/23

---

LNM Footer Editable in USAIMS Online

THE LOCAL NOTICE TO MARINERS IS AVAILABLE ON THE WORLD WIDE WEB AT [HTTPS://WWW.NAVCEN.USCG.GOV](https://www.navcen.uscg.gov)

A.I. Solares, LCDR  
U.S. Coast Guard  
Acting Chief Waterways Management Branch

**U.S. COAST GUARD  
REPORT OF DELAY AT DRAWBRIDGE  
PER 33 CFR 117.5**

BRIDGE NAME: \_\_\_\_\_ DATE: \_\_\_\_\_

MILE : \_\_\_\_\_ WATERWAY: \_\_\_\_\_

1. Name/ Type of Vessel: \_\_\_\_\_ Direction of Travel : \_\_\_\_\_

2. Vessel Owner (Name): \_\_\_\_\_

(Address): \_\_\_\_\_

3. Name of Pilot (if applicable): \_\_\_\_\_

(Address): \_\_\_\_\_

4. Time vessel signaled for bridge opening: \_\_\_\_\_

5. Location of vessel when signal was given: \_\_\_\_\_

6. Time and location of vessel when delay began: \_\_\_\_\_

7. Method of signal for bridge opening: ( ) Radio ( ) Sound ( ) Visual.

(If sound or visual signal was used, specify: \_\_\_\_\_)

8. Time bridge operator acknowledged signal: \_\_\_\_\_

9. Method of bridge operator acknowledgement: ( ) Radio ( ) Sound ( ) Visual

(If sound or visual signal was used, specify: \_\_\_\_\_)

10. Did bridge operator acknowledgement indicate the bridge,

( ) Could be opened immediately?

( ) Could not be opened immediately?

11. If land traffic crossed the bridge:

Time land traffic started across the bridge \_\_\_\_\_

Time land traffic stopped crossing the bridge \_\_\_\_\_

Did land traffic stop on the bridge? \_\_\_\_\_

Duration land traffic stopped on the bridge \_\_\_\_\_

12. Time drawbridge opened for navigation \_\_\_\_\_

13. Additional comments:

\_\_\_\_\_  
\_\_\_\_\_  
\_\_\_\_\_

I certify the above information is true to the best of my knowledge and understand this statement may be used by the U.S. Coast Guard in levying fines against the bridge owner.

Signature \_\_\_\_\_

Telephone \_\_\_\_\_

Mariners may complete and return to:

Commander (dpw)

Fax: (510) 437-5836

Email: [Carl.T.Hausner@uscg.mil](mailto:Carl.T.Hausner@uscg.mil)

Eleventh Coast Guard District

Coast Guard Island, Building 50-2

Alameda, CA 94501-5100

Attn: Bridge Office

Questions? Please contact: Carl Hausner, Bridge Administrator, Eleventh Coast Guard District

Office: (510) 437-3516

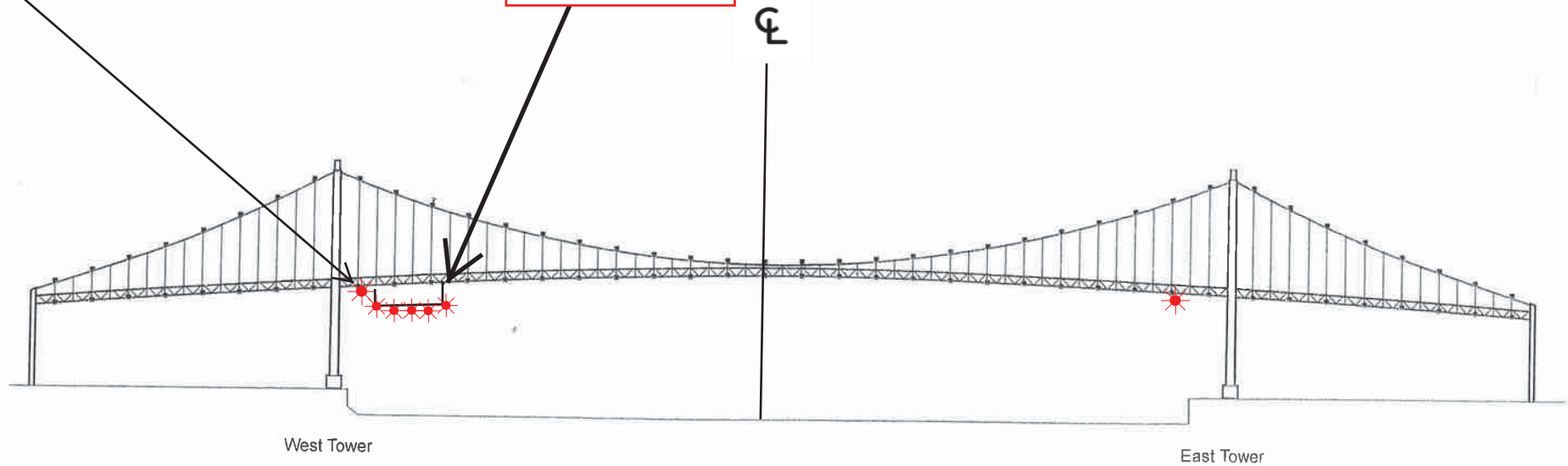
Cell: (510) 219-4366

Mariners are reminded not to require bridge openings for appurtenances nonessential to navigation, per 33 CFR 117.11

Vincent Thomas Highway Bridge  
Mile 3.0  
Los Angeles/Long Beach Harbor  
**Painting Project**

West Channel Margin  
Light

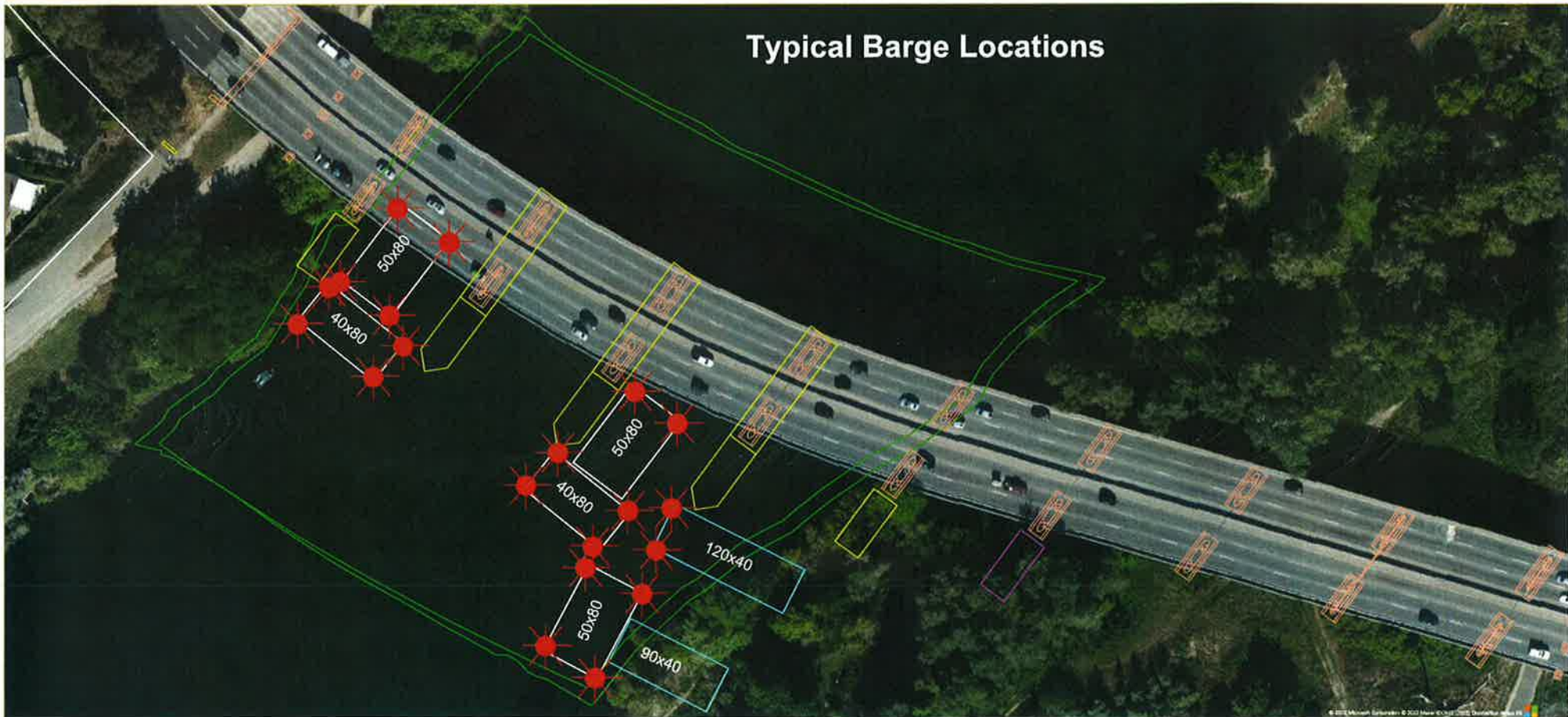
Below Low Steel  
Platform. 5' 4"  
reduction in  
vertical clearance



A 180 foot long under deck temporary platform will reduce vertical clearance by 5' 4". Each corner and every 50 feet along the the upstream and downstream side of the platform will lighted at night with steady burning red lights visible at 2000 yards by approaching vessels. In a duration of 1-year the platform will progress from the western channel margin light to 250' west of the centerline of the bridge.

# Rehabilitation and Modification Project Capital City (CA Route 51) Bridge, Mile 4.0, American River

## Typical Barge Location and Typical Barge Lighting



Each corner of each barge is lighted at night with steady burning all-round red light, visible at 2,000 by approaching vessels. All vessels transiting the project area should use extreme caution. Turbidity curtains will be placed at different locations during the project. The next four diagrams show the proposed location of the curtains.

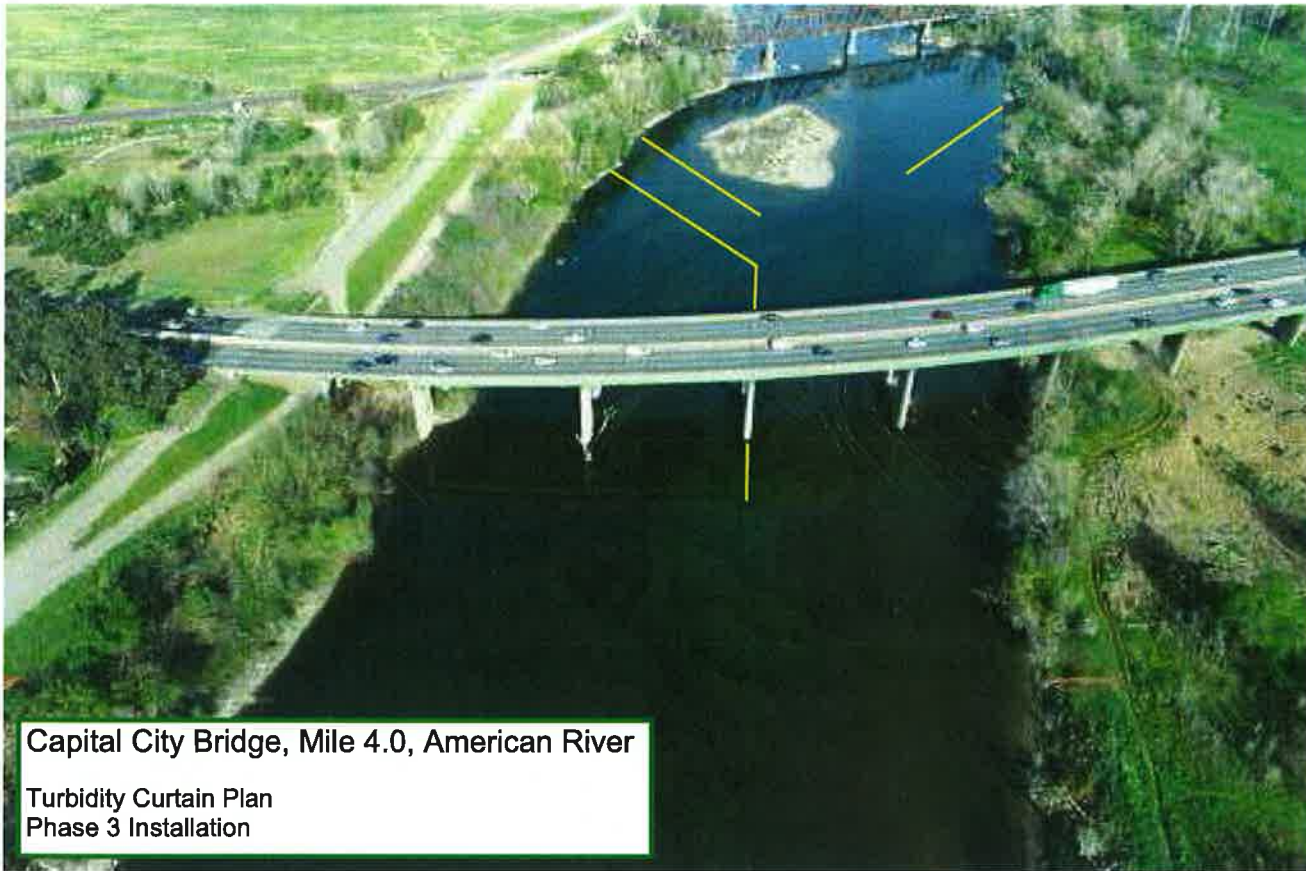


Capital City Bridge, Mile 4.0, American River  
Turbidity Curtain Plan  
Phase 1 Installation



Capital City Bridge, Mile 4.0, American River

Turbidity Curtain Plan  
Phase 2 Installation



Capital City Bridge, Mile 4.0, American River  
Turbidity Curtain Plan  
Phase 3 Installation





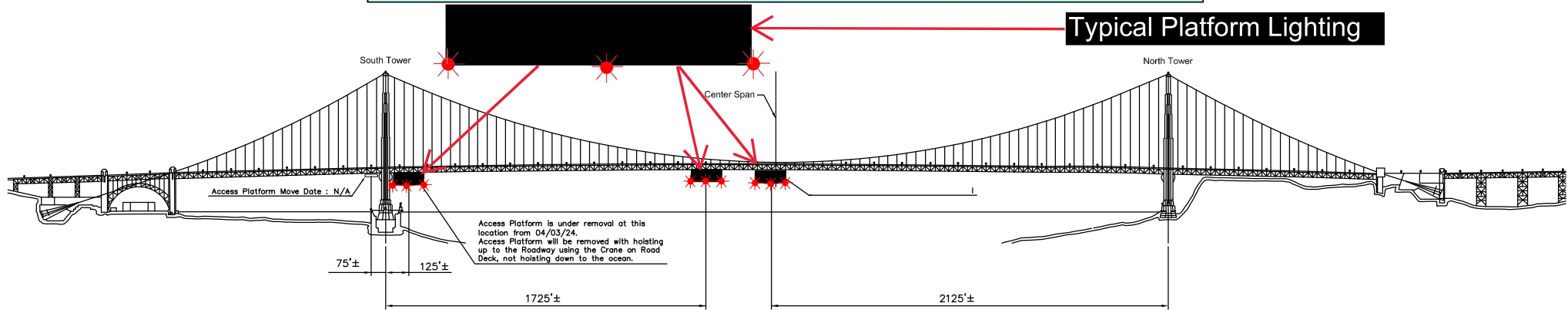
Capital City Bridge, Mile 4.0, American River

Turbidity Curtain Plan  
Phase 4 Installation

# Temporary Access Platforms

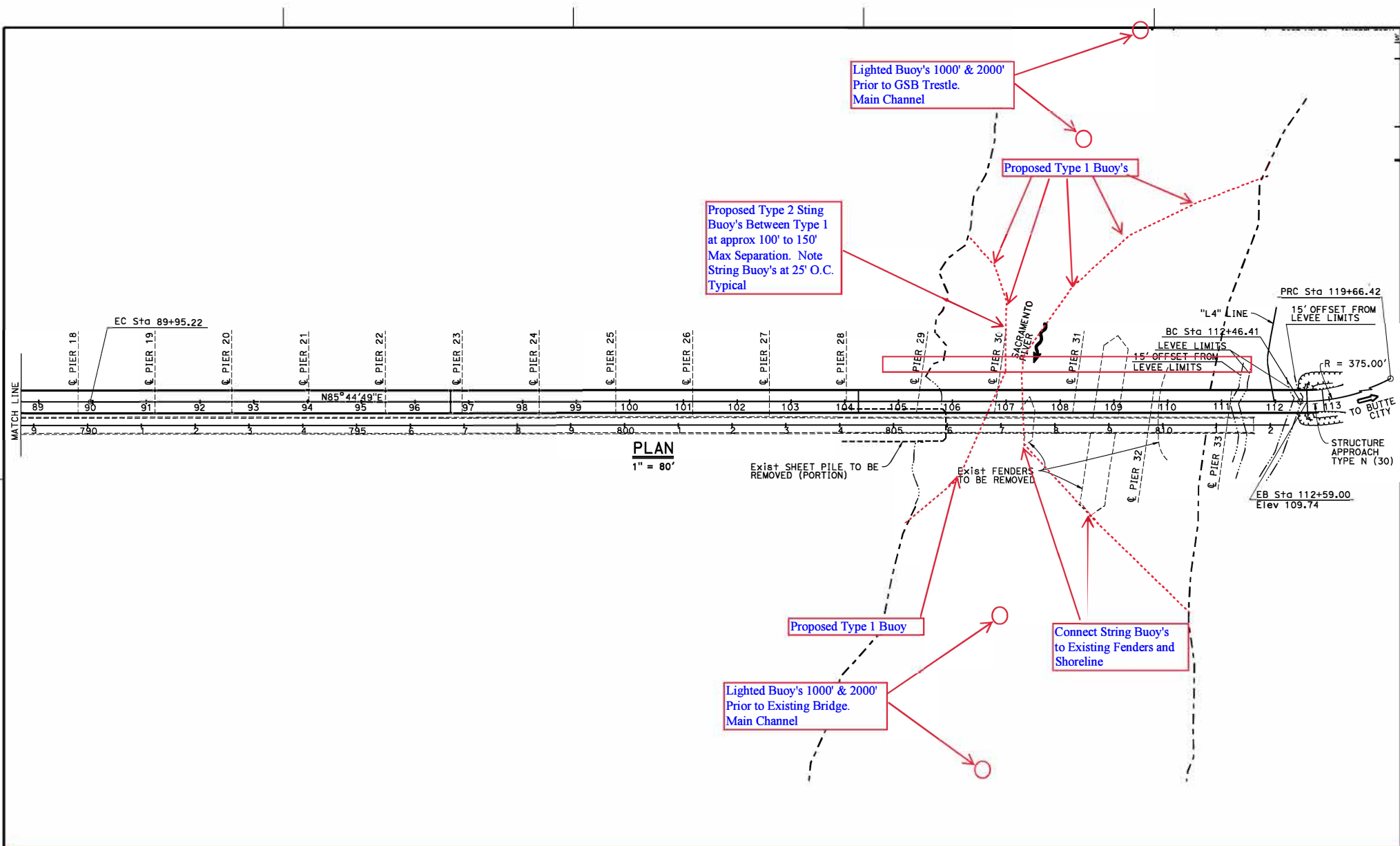
## Golden Gate Bridge, mile 2.5, San Francisco Bay

Revised 24 Apr 24



Three 54 ft wide temporary platforms are installed in the main span below low steel of the bridge, in relation to centerline of the span; one south of the north tower and two north of the south tower, reducing vertical clearance by no more than 14 feet. The upstream and downstream lower edges of the temporary platforms will be lighted at night with steady burning red lights visible at 2,000 yards by approaching vessels.

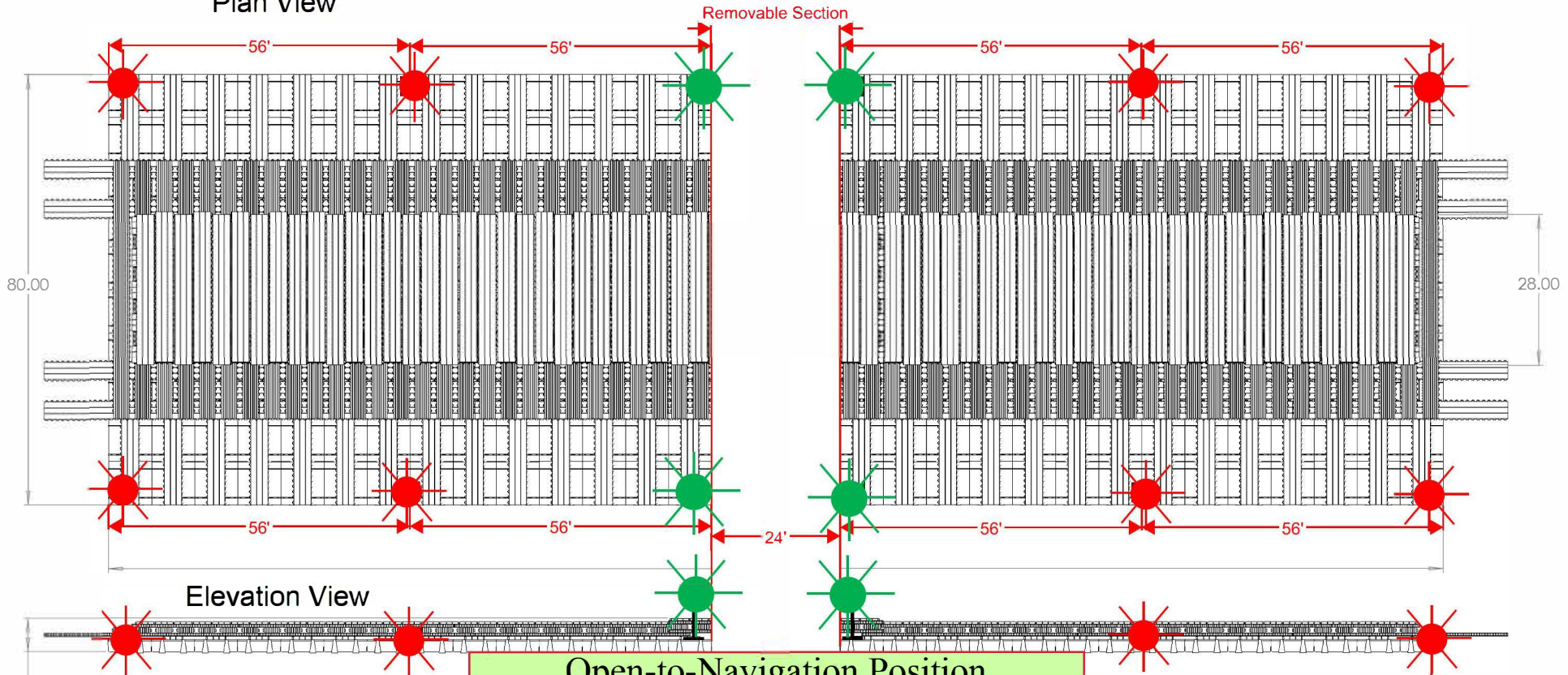




**Butte City Bridge Replacement Project, mile 169.7, Sacramento River  
Proposed Buoy Line During Construction**

# Lighting Plan Temporary Floating Bridge Gallinas Creek

Plan View



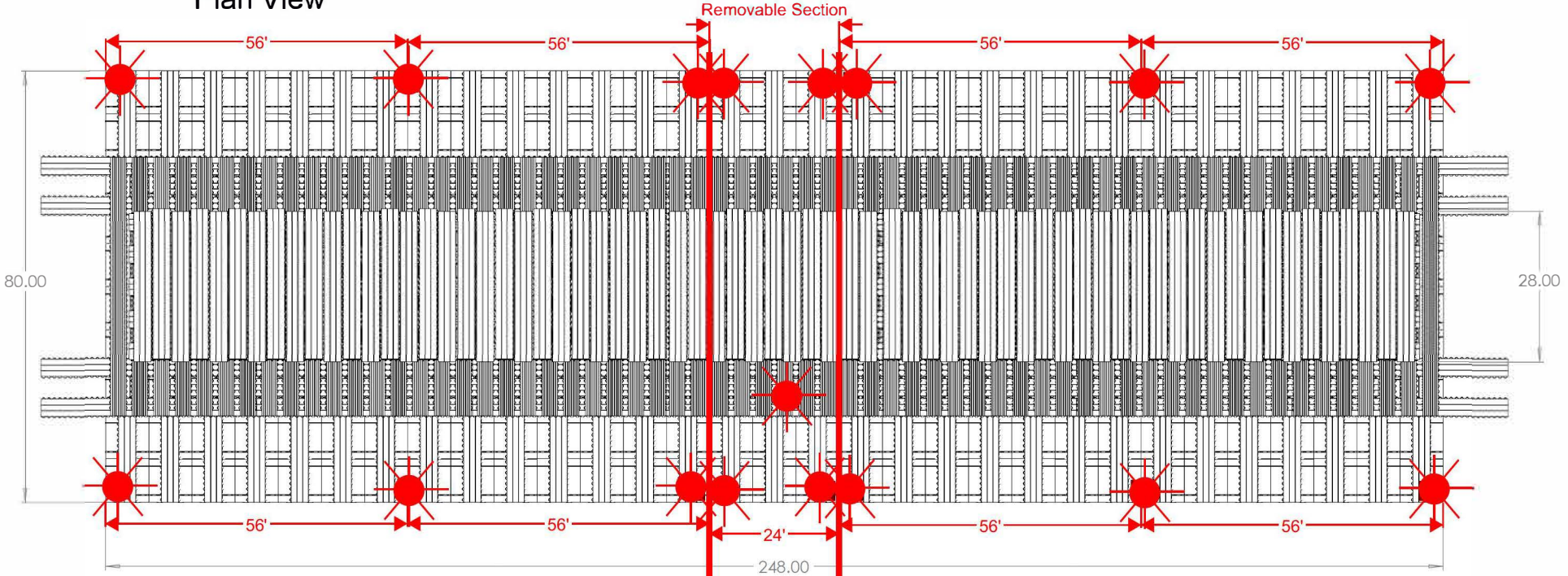
Elevation View

## Open-to-Navigation Position

The upstream and downstream edges of the temporary bridge will be lighted at night with steady burning red lights. When open, the upstream and downstream four corners of the temporary bridge's navigation span will be lighted at night with steady burning green lights. All lights shall be of sufficient candle power so as to be seen at 2,000 yards by approaching vessels.

# Lighting Plan Temporary Floating Bridge Gallinas Creek

Plan View



Elevation View



Closed-to-Navigation Position

The upstream and downstream edges of the temporary bridge will be lighted at night with steady burning red lights. All lights shall be of sufficient candle power so as to be seen at 2,000 yards by approaching vessels.

---

4 ALBERT EMBANKMENT  
LONDON SE1 7SR  
Telephone: +44 (0)20 7735 7611 Fax: +44 (0)20 7587 3210

COLREG.2/Circ.78  
28 November 2022

## TRAFFIC SEPARATION SCHEMES AND ASSOCIATED MEASURES

1 The Maritime Safety Committee, at its 106th session (2 to 11 November 2022), having considered the recommendation made by the Sub-Committee on Navigation, Communications and Search and Rescue at its ninth session (21 to 30 June 2022), and in accordance with the *Procedure for the adoption and amendment of traffic separation schemes, routing measures other than traffic separation schemes, including designation and substitution of archipelagic sea lanes, and ship reporting systems* (resolution A.858(20)), adopted traffic separation schemes and associated measures, as follows:

- .1 amended traffic separation schemes and associated measures *Approaches to the Chornomorsk, Odesa and Pivdennyi ports*, which replace the existing traffic separation schemes *Between the ports of Odessa and Ilichevsk* and *In the approaches to the ports of Odessa and Ilichevsk* (COLREG.2/Circ.14, paragraphs 1.1.2 and 1.1.3); and
- .2 amendments to the traffic separation scheme *In the Santa Barbara Channel* (COLREG.2/Circ.64, annex 6),

as set out in annexes 1 and 2, respectively.

2 Accordingly, the aforementioned traffic separation schemes and associated measures will be implemented at 0000 hours UTC on 1 June 2023.

\*\*\*

**ANNEX 2**

**AMENDMENTS TO THE TRAFFIC SEPARATION SCHEME  
"IN THE SANTA BARBARA CHANNEL"**

**In the Santa Barbara Channel**

(Reference charts: United States 18700, 2013 edition; 18720, 2020 edition; and 18721, 2009 edition.

**Note:** These charts are based on North American 1983 datum)

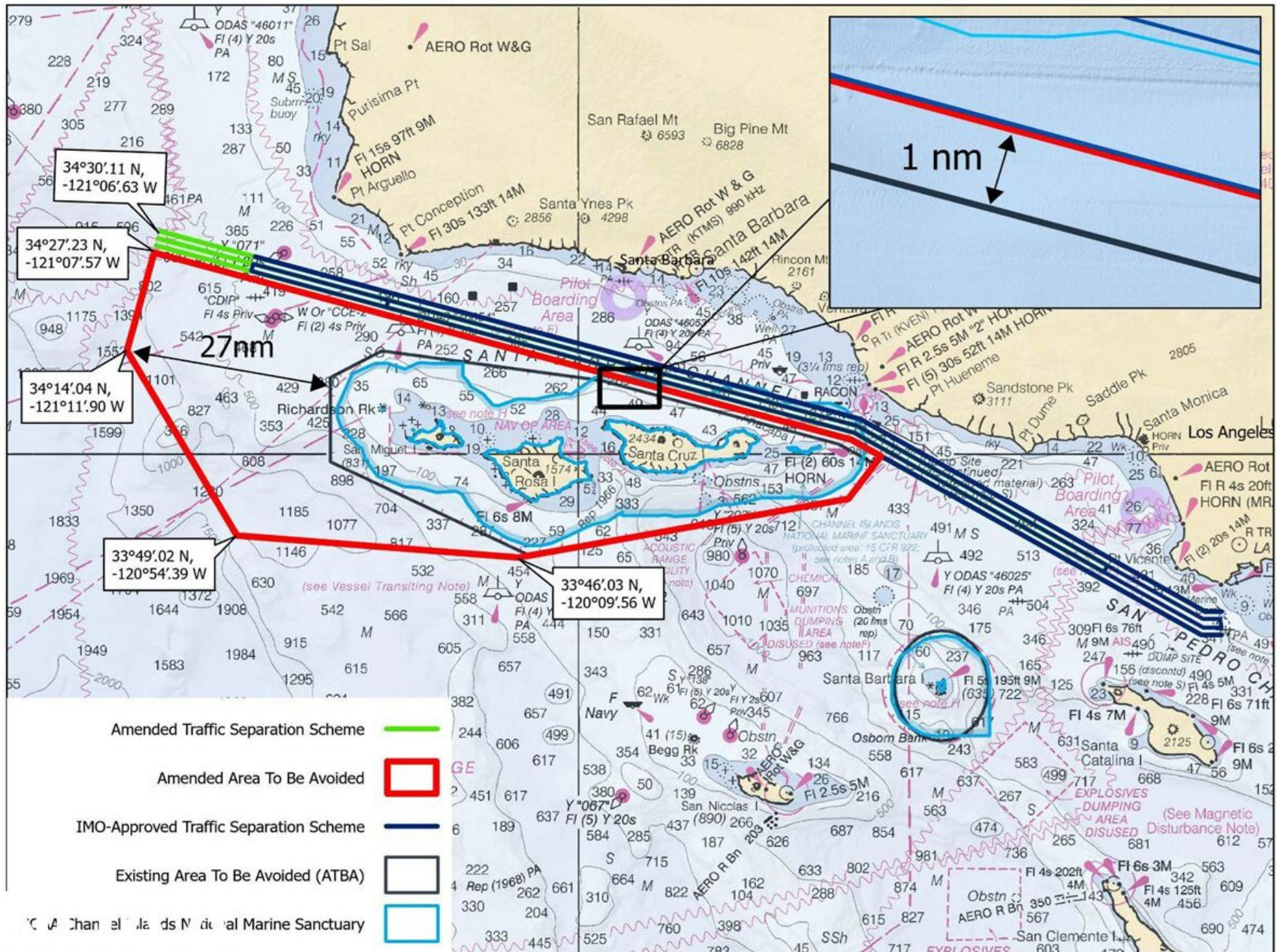
**Part II  
Between Point Conception and Point Arguello**

The description of the traffic separation scheme in part II "Between Point Conception and Point Arguello" is replaced by the following:

- (a) A separation zone is bounded by a line connecting the following geographical positions:
  - (1) 34°20'.84 N, 120°30'.28 W      (13) 34°29'.15 N, 121°06'.94 W
  - (6) 34°19'.88 N, 120°30'.59 W      (14) 34°28'.19 N, 121°07'.26 W
  
- (b) A traffic lane for westbound traffic is established between the separation zone and a line connecting the following geographical positions:
  - (7) 34°21'.80 N, 120°29'.96 W      (15) 34°30'.11 N, 121°06'.63 W
  
- (c) A traffic lane for eastbound traffic is established between the separation zone and a line connecting the following geographical positions:
  - (12) 34°18'.92 N, 120°30'.91 W      (16) 34°27'.23 N, 121°07'.57 W

---







To: All Mariners

April 1, 2024

The National Oceanic and Atmospheric Administration (NOAA), with support from the United States Coast Guard (USCG) and Environmental Protection Agency (EPA) is issuing a voluntary 10-knot Vessel Speed Reduction (VSR) request that goes into effect May 1 off the coasts of San Francisco, Monterey, and southern California; please see the attached charts. Large ships traveling at 10 knots or less give whales more time to move to avoid a strike, reduce the lethality of a strike should one occur, and generate less harmful ocean noise and fewer air emissions. Thus, the goals of these voluntary VSR zones are to reduce the risk of fatal ship strikes to endangered and threatened blue, fin, and humpback whales, reduce ocean noise, and protect public health along the California coast. These whale species are protected under the Federal Endangered Species Act (16 U.S.C. 1538 et seq.), the Marine Mammal Protection Act (16 U.S.C. 1361 et seq.), and the National Marine Sanctuaries Act (16 U.S.C. 1431 et seq.). Any unauthorized take of whales, even if unintentional, by vessels transiting in U.S. waters violates federal statutes.

**The voluntary VSR requests will be in effect May 1 to December 31, 2024 for the San Francisco and Monterey Bay Region zones and May 1 to December 15, 2024 for the southern California zone, as shown in the attached charts.** The VSR period is being extended by two weeks in the San Francisco and Monterey Bay Region zones due to concerns about the extended presence of protected humpback whales in recent years off Central California. NOAA, USCG, and EPA request that all vessels 300 gross tons (GT) or larger reduce speeds to 10 knots when transiting within the designated VSR zones and prioritize use of the western traffic lane of the San Francisco TSS when traveling in the San Francisco Offshore TSS. Vessels may deviate from the speed and routing recommendations whenever necessary to maintain safe maneuvering.

We request your cooperation with the voluntary VSR requests to protect the health of coastal communities and whales that annually migrate to and through these zones to feed. All transits by vessels 300 GT or larger are analyzed by NOAA via Automatic Information System (AIS) data provided by USCG to assess the cooperation of your company along with industry as a whole.

NOAA, USCG, and EPA are committed to the long-term protection of nationally significant marine resources and public health by enhancing marine safety and environmental awareness in the maritime community. If you have questions, please contact Sean Hastings, 805-705-1790, [sean.hastings@noaa.gov](mailto:sean.hastings@noaa.gov).

NOAA, USCG, and EPA commend your commitment to protecting endangered and threatened whales and protecting public health by cooperation with the 10 knot VSR requests and working towards a goal of 100% cooperation in 2024.

Handwritten signature of William J. Douros in blue ink.

William J. Douros, Regional Director  
NOAA Office of National Marine Sanctuaries  
West Coast Region

Handwritten signature of Jennifer Quan in blue ink.

Jennifer Quan, Regional Administrator  
NOAA National Marine Fisheries Service  
West Coast Region

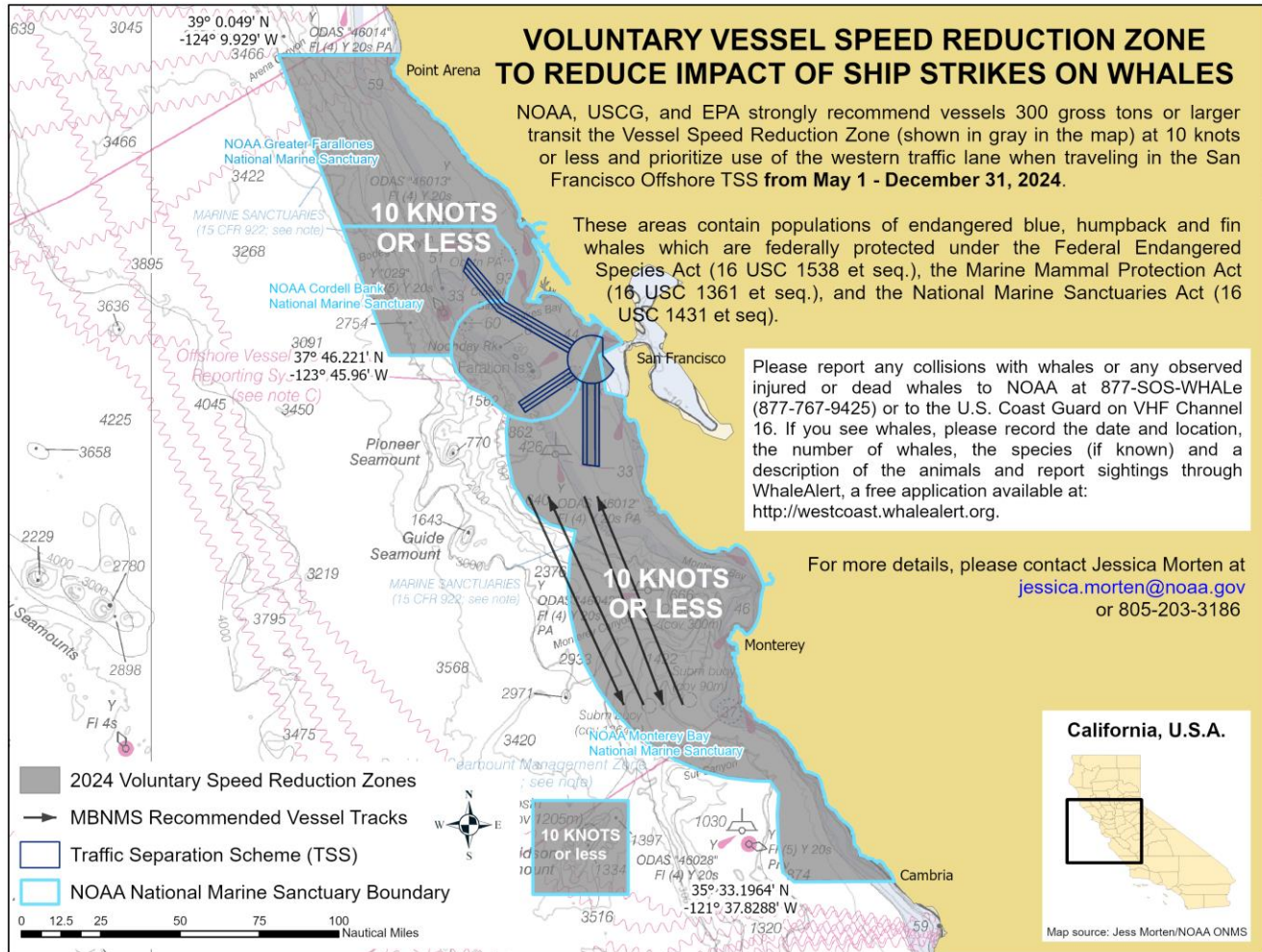
Handwritten signature of Andrew M. Sugimoto in blue ink.

Andrew M. Sugimoto, Rear Admiral  
U.S. Coast Guard  
District Eleven

Handwritten signature of Martha Guzman in blue ink.

Martha Guzman, Regional Administrator  
Environmental Protection Agency  
Region 9

## 2024 Voluntary Vessel Speed Reduction Zones – San Francisco and Monterey Bay Region

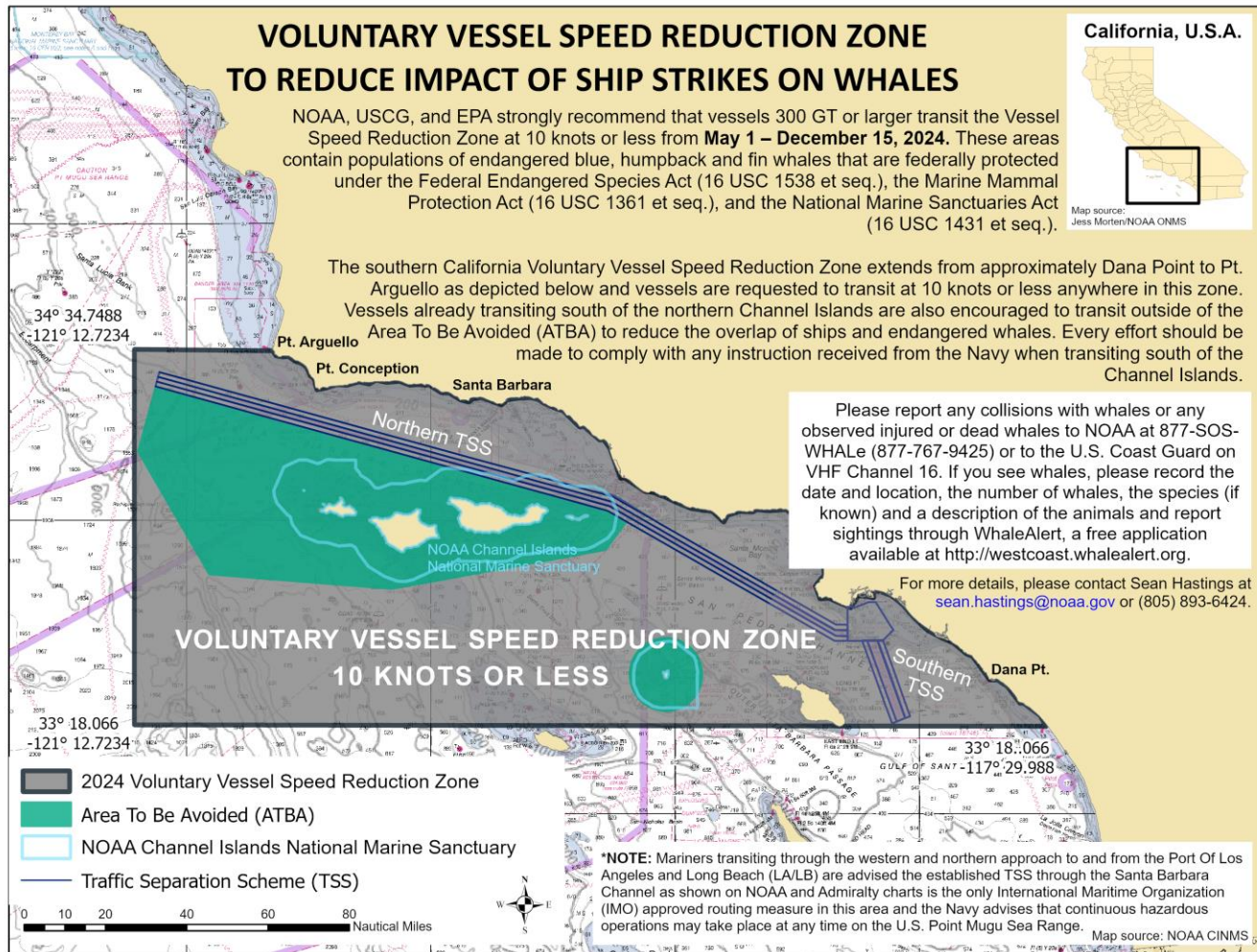


NOAA Chart 501

This map is not to be used for navigational purposes

16 FEBRUARY 2024

## 2024 Voluntary Vessel Speed Reduction Zone – Southern California Region



NOAA Chart 18022

Chart not for navigational purposes.

18 MARCH 2024



M/V Island Pride – Call Sign: LAGN8



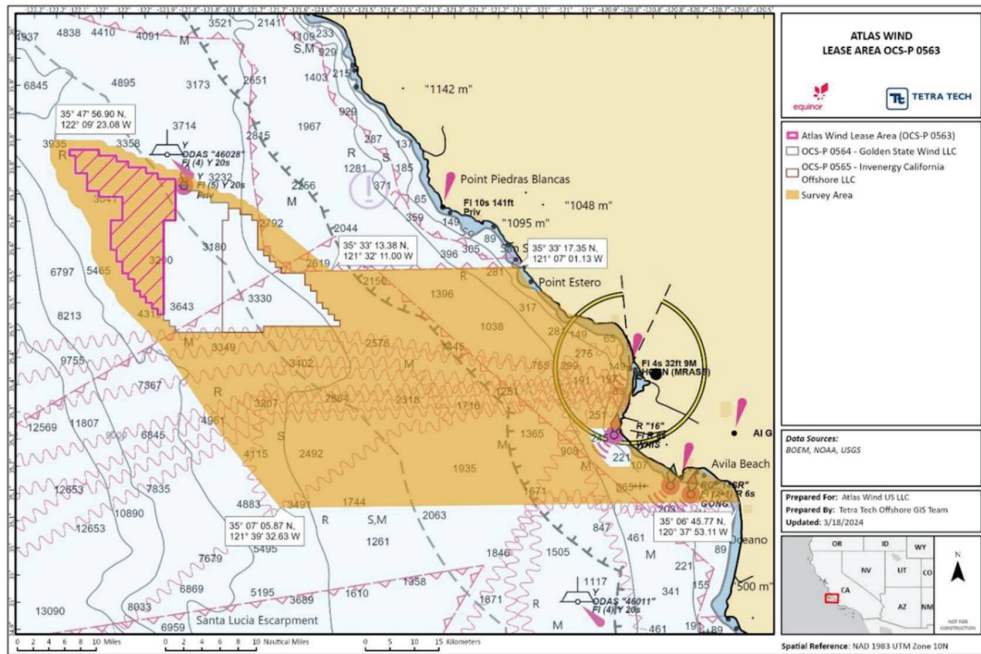
R/V Taku – Call Sign: TAKU

RADIO FREQUENCY VESSELS CAN BE CONTACTED ON : VHF channel 16

**PASSING ARRANGEMENTS:**

During the survey the M/V Island Pride and R/V Taku will be deploying subsurface survey equipment along the route corridor and in the Lease Area (OCS-P 0563) and will be restricted in their ability to maneuver. Approaching vessels are requested to pass at a safe speed and distance.

**Chart of Survey Area within both state and federal waters with latitude and longitude of approximate Survey Area boundaries**



**SURVEY COORDINATES OF LEASE AREA AND SURVEY AREA**

<b>SURVEY COORDINATES OF THE LEASE AREA</b>	
<b>Latitude</b>	<b>Longitude</b>
35.7248	-121.8855
35.6491	-121.8865
35.6494	-121.9130
35.4793	-121.9154
35.4764	-121.9286
35.5963	-122.0330
35.6504	-122.0323
35.6502	-122.0058
35.6934	-122.0053
35.6939	-122.0583
35.7049	-122.0847
35.7375	-122.1109
35.7701	-122.1238
35.7809	-122.1237
35.7804	-122.0573

<b>SURVEY COORDINATES OF THE SURVEY AREA</b>	
<b>Latitude</b>	<b>Longitude</b>
35.5548	-121.117
35.4484	-120.906
35.1127	-120.631
35.1182	-121.659
35.4263	-121.93
35.6353	-122.077
35.7991	-122.156
35.743	-121.905
35.6762	-121.714
35.5537	-121.536



**Sea floor Segment HDPE Pipeline pull-out route**

