



U.S. Department
of Homeland Security
**United States
Coast Guard**

LOCAL NOTICE TO MARINERS

District: 11

Week: 38/24

CORRESPONDENCE TO:
COMMANDER
DISTRICT ELEVEN (DPW)
COAST GUARD ISLAND BUILDING 50-2
ALAMEDA, CA 94501-5100

REFERENCES: COMDTPUB P16502.6, Light List Volume VI, 2017 Edition, U.S. Chart No.1 12th Edition, and Coast Pilot Volume 7 49th Edition. These publications, along with corrections, are available at: <https://nauticalcharts.noaa.gov/>

BROADCAST NOTICE TO MARINERS - Information concerning aids to navigation and waterway management promulgated through BNM HB-0012-24, SF-0122-24, LA-0182-24, and SD-0042-24 have been incorporated in this notice, or will continue if still significant.

SECTION I - SPECIAL NOTICES

This section contains information of special concern to the Mariner.

SUBMITTING INFORMATION FOR PUBLICATION IN THE LOCAL NOTICE TO MARINERS

A complete set of guidelines with examples and contact information can be found at <http://www.pacificarea.uscg.mil/Our-Organization/District-11/Prevention-Division/LnmRequest/> or call Waterways Management Branch at 510-437-2929 or e-mail D11-SMB-D11-LNM@uscg.mil. Please provide all Local Notice to Mariners submissions 14 days prior to the start of operations

LNM: 17/21

BRIDGE INFORMATION- PROJECTS, DISCREPANCIES, CORRECTIONS & REGULATORY

For all bridge related issues, including lighting, operation, obstructions, construction, demolition, etc. contact the Eleventh Coast Guard District Bridge Administrator 24 hour cell phone at 510-219-4366. Flotsam may accumulate on and near bridge piers and abutments. Mariners should approach all bridges with caution. A vessel delay at a drawbridge may be reported to the District Bridge Administrator by telephone, or by using the Delay_Report_11-2017.pdf included in the Enclosures section of this Local Notice to Mariners.

BRIDGE INFORMATION-COMMUNICATIONS PROTOCOL-BENICIA/MARTINEZ UPRR BRIDGE- CARQUINEZ STRAIT

All mariners requiring a bridge lift at the Benicia-Martinez Union Pacific Railroad Bridge, mile 7.0, over the Carquinez Strait, California, should follow the protocol in the document entitled "Coordination of Communications for Union Pacific Railroad Lift Operations." Mariners can download a copy of the document by selecting the link BENICIA-MARTINEZ RR BRIDGE under the QUICK LINKS section at <https://www.pacificarea.uscg.mil/vtssf>.

CAUTION TO BE USED IN RELIANCE UPON AIDS TO NAVIGATION

The aids to navigation depicted on charts comprise a system of fixed and floating aids to navigation with varying degrees of reliability. Prudent mariners will not rely solely on any single aid to navigation, particularly a floating aid to navigation. With respect to buoys, the buoy symbol is used to indicate the approximate position of the buoy body and the sinker which secures the buoy to the seabed. The approximate position is used because of the practical limitations in positioning and maintaining buoys and their sinkers in precise geographical locations. These limitations include, but are not limited to, inherent imprecision in position fixing methods, prevailing atmospheric and sea conditions, slope of and the material making up the seabed, the fact that buoys are moored to sinkers by varying length of chain, and the fact that the buoy body and/or sinker positions are not under continuous surveillance, but are normally checked only during periodic maintenance visits which often occur more than a year apart. Due to the forces of nature, the position of the buoy body can be expected to shift inside and outside the charted symbol. The mariner is also cautioned that buoys may be extinguished or sound signals may not function as the result of natural causes, collisions, or other accidents. For the foregoing reasons, a prudent mariner must not rely completely upon the position or operation of floating aids to navigation, but will also utilize bearings from fixed objects and aids to navigation on shore. Furthermore, a vessel attempting to pass close aboard always risks collision with a yawing buoy or with the obstruction that the buoy marks.

NAVIGATION CENTER WEBSITE TRANSITION

The U.S. Coast Guard Navigation Center is going to transition the Navigation Center website to a new, enhanced version in the first quarter of 2022. As part of this transition, URLs will be updated across the site including URLs linked to PDFs. Therefore, once the transition is complete, legacy site URLs will no longer function, including bookmarked URLs and URLs used in automatic downloading of data and/or products. Outdated URLs will automatically redirect to the home page of the site, and from there you will be able to easily navigate to your preferred page.

Below are a few of the "old"/new URL pairs listed for your convenience. Please note that the new URLs will not be active until we launch the new

website. Of course, once it is launched, the new URLs will be available for re-bookmarking. As a reminder, these are top level URLs that may contain additional links that you use.

This notice will be updated when the final launch date is determined and another notice will be issued to notify you when the site goes live. Questions/concerns may be directed to the NAVCENWebTEAM@uscg.mil.

Local Notices to Mariners (LNMs)

Current URLs: <https://www.navcen.uscg.gov/?pageName=lnmMain>

Replacement: <https://www.navcen.uscg.gov/local-notices-to-mariners-by-cg-district>

Light Lists Annual Publication

Current URLs: <https://navcen.uscg.gov/?pageName=lightLists>

Replacement: <https://www.navcen.uscg.gov/light-list-annual-publication>

Light List - Weekly

Current URLs: <https://navcen.uscg.gov/?pageName=lightListWeeklyUpdates>

Replacement: <https://www.navcen.uscg.gov/weekly-light-lists>

Light List - Corrections

Current URLs: <https://navcen.uscg.gov/?pageName=lightListCorrections>

Replacement: <https://www.navcen.uscg.gov/light-list-summary-of-corrections>

LNM: 06/22

NOTICE: CHANGES TO THE USCG LOCAL NOTICE TO MARINERS (LNM) AND LIGHT LISTS

The U.S. Coast Guard Navigation Center announces upcoming changes to the Local Notice to Mariners (LNM) and the Light List, as part of our efforts to modernize and improve the accessibility, accuracy, and overall user experience for mariners and other stakeholders.

What Is Changing?

1. Transition From Paper Charts: In January 2025, NOAA will discontinue the production of all paper charts. In alignment with this change, the Coast Guard will transition from using NOAA Paper Chart Numbers and Editions/Dates for disseminating Marine Safety Information (MSI) to using Official Waterway Names.
2. How You Will Access LNMs and Light Lists: The LNM and Light List data will now be available in a geospatial format, which will allow you to visualize information interactively on a map/chart. You can use your mouse wheel or the +/- buttons in the upper left portion of the screen to zoom in or out and navigate to your desired area on the map/chart. Once the area is displayed, you can generate a PDF of the LNM or Light List for that specific area, which you can then save and/or print. Alternatively, you can use a fillable form on our website to select your waterway by name from the Light List and generate the LNM or Light List.
3. LNM and Light List Data Refresh Rate: LNM data will be refreshed every fifteen minutes. Light List data will be refreshed every 24 hours. This will give you a much more up-to-date operating picture, designed to enhance your efficiency and improve safety in your area of transit or planned routes.
4. Elimination of Weekly Files: Weekly LNMs, Weekly Light List Correction Files, Daily Discrepancy Files, and the Summary of Light List Changes will no longer be published to focus on providing the most up-to-date and accessible format. In the near future, we will also publish an Application Programming Interface (API) for interested parties to access the data externally.

Why Are These Changes Being Made?

The modernization of MSI delivery is designed to improve the U.S. Coast Guard's aid-to navigation data management and dissemination capabilities. By providing frequent updates, geospatial visualization, and digital access, we hope to achieve our goals of:

- Enhancing Maritime Safety: By delivering the most current and precise information, mariners can make better-informed decisions, reducing the risk of accidents and ensuring safer navigation.
- Improving Accessibility: The shift to geospatial visualization makes it easier for all users, from commercial mariners to recreational boaters, to stay informed.
- Increasing Efficiency: The integration of LNM and Light List data into a geospatial format to simplify the gathering of safety information and facilitate easy route planning.

When Will These Changes Take Effect?

The transition to the modernized LNM and Light List platform (the Navigation Center website) will be completed by Monday, September 30th.

How to Access the New Features?

Starting on September 30th, 2024, you will be able to access the updated LNM and Light List through the NAVCEN website. A User Guide will be available on the NAVCEN website. Customers will still have the ability to download legacy versions of these products until October 21st.

For any questions or assistance, please visit our Contact Us Page, select 'LNMs or Light Lists' from the Subject dropdown, and submit your inquiry. Thank you for your continued support as we work to improve the safety and efficiency of maritime navigation. U.S. Coast Guard Navigation Center (www.navcen.uscg.gov).

LNM: 38/24

SAFETY NOTICE - NAVIGATIONAL RANGE AND SECTOR LIGHTS ON ELECTRONIC CHARTS

"The U.S. Coast Guard has become aware that the Range and Sector Light Characteristic labels are not displayed on Electronic Navigational Charts (ENCs) when used in an Electronic Chart Display and Information System (ECDIS) due to limitations of the S-52 ECDIS display specification. Mariners may query the ENC data directly within ECDIS or refer to the Light List for complete information on Range and Sector Light Characteristics."

LNM: 39/22

SOUTHERN CALIFORNIA-SAN DIEGO BAY-MINIMIZE WAKE

The Navy Port Operations Manager requests that vessels slow to 7 kts when a vessel is moored in restricted area (33 CFR 334.865) located on the northeast side of North Island at 32-42-57N 117-11-22W, between San Diego Channel Lighted Buoy 20 (LLNR 1710) and San Diego Channel Lighted Buoy 22 (LLNR 1830). For more details or comments contact LT Rodriguez at 619-545-3232, Rigoberto.rodriguez3@navy.mil.
Chart 18773 LNM: 10/22

SUBMITTING INFORMATION FOR PUBLICATION IN THE LOCAL NOTICE TO MARINERS

Coast Guard District Eleven Waterways upgrade to E-Mail capabilities. All future requests for article submission in the District Eleven Local Notice to Mariners are requested to be E-Mailed to D11-SMB-SMB-D11-LNM@uscg.mil at least two weeks prior to the operation. For more details or comments please contact District Eleven Waterways Management Branch at 510-437-2929 or e-mail D11-SMB-D11-LNM@uscg.mil. Coast Guard District Eleven requests all Local Notice to Mariners submissions be E-Mailed to our office at least 14 days prior to the start of operations for timely submittal and publication.
LNM: 17/21

SECTION II - DISCREPANCIES

This section lists all reported and corrected discrepancies related to Aids to Navigation in this edition. A discrepancy is a change in the status of an aid to navigation that differs from what is published or charted.

DISCREPANCIES (FEDERAL AIDS)

LLNR	Aid Name	Status	Chart No.	BNM Ref.	LNM St	LNM End
181	NOAA Environmental Lighted Buoy 46025	LT EXT	18720	LA-0045-24	09/24	
240	Morro Bay West Breakwater Light	SS INOP	18700	LA-0018-24	04/24	
297	NOAA Environmental Lighted Buoy 46042	MISSING	18680	SF-0180-23	49/23	
330	Pillar Point Harbor Approach Lighted Buoy PP	TMK MISSING	18680	SF-0081-23	17/23	
360	San Francisco Approach Lighted Whistle Buoy SF	RAC INOP	18640	SF-0040-22	17/22	
365	Mile Rocks Light	LT EXT	18640	SF-0099-22	44/22	
382	NOAA Environmental Lighted Buoy 46059	ADRIFT	18007	SF-0103-24	29/24	
490	Humboldt Bay Entrance Lighted Whistle Buoy HB	REDUCED INT	18620	HB-0013-23	46/23	
1535	Zuniga Jetty Light W	STRUCT DEST		SD-0038-23	26/23	
1619	San Diego North Island Shallow Water Habitat Light D	STRUCT DEST		SD-0016-24	05/24	
2295	Oceanside Breakwater Light 1	LT EXT/STRUCT DMGD		SD-0038-24	09/24	
2635	Ship Rock Light	LT EXT	18740	LA-0095-21	26/21	
2641	Isthmus Cove Harbor Reefs Light	STRUCT DMGD	18740	LA-0018-21	05/21	
2670	Santa Catalina Island West End Light	LT EXT	18740	LA-0113-19	34/19	
2810	Anaheim Bay Channel Buoy 7	OFF STA		LA-0062-22	30/22	
3123	Los Angeles Main Channel Range Rear Light	LT IMCH		LA-0182-24	38/24	
3330	Redondo Beach West Jetty Light 3	STRUCT DEST	18740	LA-0021-23	09/23	
3835	Morro Bay West Breakwater Light	SS INOP	18700	LA-0018-24	04/24	
3850	Morro Bay Channel Lighted Buoy 3	LT EXT		LA-0138-24	30/24	
4125	Southeast Reef Southern End Lighted Gong Buoy 1S	SS INOP	18680	SF-0004-24	20/24	
4130	Pillar Point Harbor Entrance Lighted Gong Buoy 1	SS INOP/STRUCT DMGD	18680	SF-0082-23	17/23	
4200	Drakes Bay Lighted Whistle Buoy 1	LT EXT	18680	SF-0112-24	35/24	
4245	Mile Rocks Light	LT EXT	18640	SF-0099-22	44/22	
4385	Sausalito Channel Light 2	STRUCT DEST		SF-0122-24	38/24	
4610	Oakland Outer Harbor Range B Front Light	DAYMK MISSING		SF-0070-23	14/23	

4625	Oakland Outer Harbor Range A Rear Light	STRUCT DEST/TRLB	SF-0032-24	10/24
4655	Oakland Outer Harbor Light 13	MISSING/TRLB	SF-0067-23	14/23
4680	Oakland Inner Harbor Light 10	MISSING/TRLB	SF-0052-21	02/22
4684	Oakland Inner Harbor Turn Basin Light B	STRUCT DMGD/TRLB	SF-0097-21	29/21
4740	San Leandro Bay Airport Channel Daybeacon 6	STRUCT DEST/TRUB	SF-0033-22	15/22
4830	San Leandro Marina Channel Light 1	LT EXT/SS INOP	SF-0012-23	02/23
5225	Redwood Creek Light 11	STRUCT DEST/TRLB	SF-0148-23	41/23
5430	Berkeley Marina Channel Light 2	LT EXT	SF-0086-22	40/22
5685	Richmond Harbor Channel Light 4	MISSING/TRLB	SF-0040-24	10/24
5710	Richmond Harbor Channel Light 8	MISSING/TRLB	SF-0109-24	32/24
5725	Richmond Harbor Channel Light 9	MISSING/TRLB	SF-0098-22	43/22
5845	San Rafael Creek Light 3	STRUCT DEST	SF-0109-23	48/23
5915	San Pablo Bay Channel Lighted Buoy 10	OFF STA	SF-0110-24	34/24
6095	Mare Island Strait Light 2	STRUCT DMGD/TRLB	SF-0152-20	49/20
6100	Mare Island Strait Light 3	STRUCT DEST/TRLB	SF-0173-23	47/23
6240	Carquinez Strait Light 23	LT EXT	SF-0008-23	02/23
6557	Suisun Bay Channel Light 24A	STRUCT DEST/TRLB	SF-0134-23	36/23
6685	San Joaquin River Light 8	STRUCT DMGD/TRLB	SF-0109-21	02/22
6760	San Joaquin River Light 25	MISSING/TRLB	SF-0012-24	05/24
6765	San Joaquin River Light 26	LT EXT	SF-0120-24	38/24
6830	San Joaquin River Light 39	STRUCT DMGD	SF-0119-23	30/23
6860	San Joaquin River Light 49	LT EXT	SF-0121-24	38/24
7210	Sacramento River Deep Water Ship Channel Light 10	MISSING/TRLB	SF-0101-21	32/21
7230	Sacramento River Deep Water Ship Channel Light 14	MISSING/TRLB	SF-0140-23	39/23
7235	Sacramento River Deep Water Ship Channel Light 15	MISSING/TRLB	SF-0100-20	42/23
7240	Sacramento River Deep Water Ship Channel Light 16	STRUCT DEST/TRLB	SF-0127-18	34/18
7260	Sacramento River Deep Water Ship Channel Light 20	MISSING/TRLB	SF-0108-21	05/23
7395	Sacramento River Deep Water Ship Channel Light 47	MISSING/TRLB	SF-0069-24	18/24
7605	Sacramento River Deep Water Ship Channel Light 84	LT EXT	SF-0116-24	37/24
7770	Bodega Head Light	MISSING	18640 SF-0113-24	35/24
7810	Bodega Harbor Channel Light 6	STRUCT DMGD/TRLB	SF-0028-21	08/23
7815	Bodega Harbor Channel Daybeacon 7	STRUCT DEST/TRLB	SF-0046-23	08/23
8130	Humboldt Bay Entrance Lighted Whistle Buoy HB	REDUCED INT	18620 HB-0013-23	46/23
8195.1	Humboldt Bay Light 9	STRUCT DMGD	18620 HB-0014-24	01/24
8200	Humboldt Bay Lighted Buoy 10	OFF STA	HB-0011-24	27/24
	Humboldt Bay Light 9 TRLB	OFF STA	HB-0012-24	31/24

DISCREPANCIES (FEDERAL AIDS) CORRECTED

LLNR	Aid Name	Status	Chart No.	BNM Ref.	LNM St	LNM End
7375	Sacramento River Deep Water Ship Channel Light 43	WATCHING PROPERLY		SF-0116-24	37/24	38/24

DISCREPANCIES (PRIVATE AIDS)

LLNR	Aid Name	Status	Chart No.	BNM Ref.	LNM St	LNM End
20	Ocean Beach Pier Fog Sound Signal	SS INOP		SD-0002-19	05/19	

158	Scripps Waverider Lighted Research Buoy 092	OFF STA	18740		45/18
199	Scripps SB Channel CCE-2 Research Buoy	OFF STA	18700	LA-0104-24	24/24
478	Scripps Waverider Lighted Research Buoy 094	OFF STA	18620	HB-0010-24	27/24
1654	Shelter Island East Shoal Light	LT IMCH			17/24
1665	Americas Cup Harbor Daybeacon 2	LT IMCH			17/24
1665	Americas Cup Harbor Daybeacon 2	STRUCT DEST/TRUB		SD-0001-22	02/22
1670	Americas Cup Harbor Daybeacon 4	LT IMCH			17/24
1720	Navy San Diego Bay Mooring Buoy 19	LT EXT		SD-0079-23	42/23
2054	Sweetwater Channel Light 4	LT EXT		SD-0019-24	02/24
2056	Sweetwater Channel Light 6	LT EXT		SD-0018-24	02/24
2070	Coronado Cays Channel Daybeacon 3	STRUCT DEST		SD-0098-17	36/17
2090	Coronado Cays Channel Light 7	STRUCT DEST/TRUB		SD-0046-22	31/22
2159.1	Chula Vista Channel Shoal Light B	STRUCT DEST/LT EXT		SD-0021-23	14/23
2240	Chula Vista Channel Light 18	LT EXT		SD-0040-24	38/24
2255	Chula Vista Channel Light 21	DAYMK MISSING		SD-0017-24	03/24
2288	Scripps Waverider Lighted Research Buoy 220	OFF STA	18022	SD-0041-20	30/20
2289.1	Scripps Waverider Lighted Research Buoy 100	OFF STA	18740		22/20
2289.4	Scripps "CORDC" Lighted Research Buoy	MISSING	18740		22/20
2606	Quarry North Outer Lighted Mooring Buoy	MISSING			26/24
2764.4	Catalina Sea Ranch SE Buoy	MISSING	18740	LA-0001-22	03/22
2847	Long Beach Harbor Bait Barge LMB "NB"	OFF STA			12/24
2848	Harbor Bait Barge Lighted Mooring Buoy "LB"	MISSING			12/24
2856	Long Beach Harbor Mooring Buoy S-1	LT EXT			17/24
2860	Long Beach Harbor Harley Marine Mooring Buoy "H"	LT EXT			12/24
2866	Long Beach Harbor Manson Lighted Mooring Buoy M-1	LT EXT			17/24
2867.2	Long Beach Harbor Manson Lighted Mooring Buoy M-3	LT EXT			17/24
2870.1	Long Beach Harbor Manson Lighted Mooring Buoy M-4	LT EXT			17/24
2871	Long Beach Harbor Brusco Lighted Mooring Buoy	LT EXT		LA-0009-21	03/21
2871	Long Beach Harbor Brusco Lighted Mooring Buoy	LT EXT			12/24
2872	Long Beach Harbor Lighted Mooring Buoy PT	LT EXT			17/24
2875	Long Beach Harbor Bait Barge Lighted Mooring Buoy "FI"	MISSING			12/24
2890	Shoreline Marina Breakwater Light East	LT EXT			17/24
2895	Shoreline Marina Breakwater Light West	LT EXT			17/24
2900	Shoreline Marina Entrance Light East	LT EXT			17/24
2905	Shoreline Marina Entrance Light West	LT IMCH			20/24
2965	Catalina Landing West Light	LT EXT			12/24
3028	Pier F Fireboat Pier Light	LT EXT			12/24
3190	San Pedro Bait Company Lighted Mooring Buoy	OFF STA			26/24
3337	King Harbor Channel Buoy 1	OFF STA		LA-0028-24	07/24
3338	King Harbor Channel Buoy 2	OFF STA		LA-0028-24	07/24
3339.2	REDONDO HARBOR LIGHT	LT EXT	18740	LA-0181-18	52/18
3390	El Segundo NRG Energy Buoy 4ES	OFF STA			26/24

3400	El Segundo NRG Energy Buoy 6ES	OFF STA		26/24
3400	El Segundo NRG Energy Buoy 6ES	SINKING	LA-0153-21	39/21
3420	Hyperion Lighted Gong Buoy 10 ES	LT EXT		16/20
4401	Richardson Bay Daybeacon 8	DAYMK DMGD		15/20
4480	San Francisco Bay Anchorage 6 Lighted Mooring Buoy A	MISSING		46/23
4480.1	San Francisco Bay Anchorage 6 Lighted Mooring Buoy B	MISSING		46/23
4576	South Beach Harbor North Entrance Light 2	LT EXT	SF-0047-21	11/21
4577	South Beach Harbor North Entrance Light 1	LT EXT	SF-0046-21	10/21
4578	South Beach Harbor South Entrance Light 1	LT EXT	SF-0091-20	33/20
4827.1	San Francisco Bay Anchorage 9 Lighted Mooring Buoy A	LT EXT	SF-0012-20	04/20
4828.1	San Francisco Bay Anchorage 9 Lighted Mooring Buoy B	MISSING		39/23
5025	Oyster Cove Marina Light 1	LT IMCH		20/24
5035	Oyster Cove Marina Light 3	DAYMK DMGD		20/24
5045	Oyster Cove Marina Light 5	DAYMK DMGD		20/24
5140	Coyote Point Light 1	STRUCT DMGD		26/24
5145	Coyote Point Light 2	STRUCT DMGD		26/24
5661	Southampton Shoal Outfall Lighted Buoy 1	SINKING/RAC INOP	SF-0136-23	38/23
5662	Southampton Shoal Outfall Lighted Buoy 2	LT EXT	SF-0059-21	14/21
5877.2	San Rafael Rock Quarry Mooring Buoy C	MISSING		36/18
5960	Oleum Wharf West Lights (4)	LT EXT		17/24
5965	Oleum Wharf East Lights (4)	LT EXT		17/24
6115	Vallejo Yacht Club Light 2	REDUCED INT		17/24
6120	Vallejo Marina South Entrance Light 2	LT IMCH		17/24
6125	Vallejo Marina South Entrance Light 1	LT IMCH		17/24
6136	Vallejo Marina North Entrance Light 2	LT IMCH		17/24
6137	Vallejo Marina North Entrance Light 1	LT IMCH		17/24
6255	Martinez Marina Light 1	LT IMCH		17/24
6260	Martinez Marina Light 2	LT IMCH		17/24
6281	Amorco Wharf East Lights	LT EXT		17/24
6356	Suisun Bay Plains Products Pier Light (A)	LT EXT		17/24
6357	Suisun Bay Plains Products Pier Light (B)	LT EXT		17/24
6358	Suisun Bay Plains Products Pier Light (C)	LT IMCH		17/24
6359	Suisun Bay Plains Products Pier Light (D)	LT EXT		17/24
6363	Avon Turning Basin North Light	LT EXT		17/24
6365	Avon Wharf West Lights	LT IMCH		17/24
6605	Pittsburg Marina East Basin Light 1	LT IMCH		17/24
6623	New York Slough Koch West Light	LT IMCH		39/18
6624	New York Slough Koch East Light	LT EXT		39/18
6645.5	Delta Diablo Outfall Lighted Buoy	LT EXT	SF-0005-22	02/22
6677	Antioch Marina Entrance Light 1	LT IMCH		17/24
6677	Antioch Marina Entrance Light 1	LT IMCH		18/23
6678	Antioch Marina Entrance Light 2	LT IMCH		17/24
6678	Antioch Marina Entrance Light 2	LT IMCH		39/23

7650.1	Georgiana Slough Fish Barrier Warning Buoy 9	MISSING			17/24
7650.2	Georgiana Slough Fish Barrier Warning Buoy 10	MISSING			17/24
7650.3	Georgiana Slough Fish Barrier Warning Buoy 7	MISSING			17/24
7650.4	Georgiana Slough Fish Barrier Warning Buoy 8	MISSING			17/24
7650.5	Georgiana Slough Fish Barrier Warning Buoy 2	LT EXT			17/24
7650.6	Georgiana Slough Fish Barrier Warning Buoy 1	LT EXT			17/24
8325	Pacific Gas and Electric Dike Light	LT EXT		HB-0009-21	20/21

DISCREPANCIES (PRIVATE AIDS) CORRECTED

LLNR	Aid Name	Status	Chart No.	BNM Ref.	LNM St	LNM End
------	----------	--------	-----------	----------	--------	---------

None

PLATFORM DISCREPANCIES

Name	Status	Position	BNM Ref.	LNM St	LNM End
------	--------	----------	----------	--------	---------

None

PLATFORM DISCREPANCIES CORRECTED

Name	Status	Position	BNM Ref.	LNM St	LNM End
------	--------	----------	----------	--------	---------

None

SECTION III - TEMPORARY CHANGES and TEMPORARY CHANGES CORRECTED

This section contains temporary changes and corrections to Aids to Navigation for this edition. When charted aids are temporarily relocated for dredging, testing, evaluation, or marking an obstruction, a temporary correction shall be listed in Section IV giving the new position.

TEMPORARY CHANGES

LLNR	Aid Name	Status	Chart No.	BNM Ref.	LNM St	LNM End
182	Scripps Waverider CDIP Lighted Research Buoy 234	DISCONTINUED	18720	LA-0052-24	11/24	
1571	Ballast Point Shoal Buoy	DISCONTINUED FOR DREDGING		SD-0022-24	08/24	

TEMPORARY CHANGES CORRECTED

LLNR	Aid Name	Status	Chart No.	BNM Ref.	LNM St	LNM End
------	----------	--------	-----------	----------	--------	---------

None

PLATFORM TEMPORARY CHANGES

Name	Status	Position	BNM Ref.	LNM St	LNM End
------	--------	----------	----------	--------	---------

None

PLATFORM TEMPORARY CHANGES CORRECTED

Name	Status	Position	BNM Ref.	LNM St	LNM End
------	--------	----------	----------	--------	---------

None

SECTION IV - CHART CORRECTIONS

This section contains corrections to federally and privately maintained Aids to Navigation, as well as NOS corrections.

This section contains corrective actions affecting chart(s). Corrections appear numerically by chart number, and pertain to that chart only. It is up to the mariner to decide which chart(s) are to be corrected. The following example explains individual elements of a typical chart correction.

Chart Number	Chart Edition	Edition Date	Last Local Notice to Mariners	Horizontal Datum Reference	Source of Correction	Current Local Notice to Mariners
12327	91st Ed.	19-APR-97	Last LNM: 26/97	NAD 83		27/97
Chart Title: NY-NJ-NEW YORK HARBOR - RARITAN RIVER						
Main Panel 2245 NEW YORK HARBOR						
(Temp) ADD	NATIONAL DOCK CHANNEL BUOY 3				CGD01	074-02-48.001W
	Green can	Object of Corrective Action			Position	
	Corrective Action					

(Temp) indicates that the chart correction action is temporary in nature. Courses and bearings are given in degrees clockwise from 000 true. Bearings of light sectors are toward the light from seaward. The nominal range of lights is expressed in nautical miles (NM) unless otherwise noted.

18007 **33rd Ed.** **01-FEB-09** **Last LNM: 23/21** **NAD 83** **38/24**

Chart Title: San Francisco to Cape Flattery

Main Panel 1652 SAN FRANCISCO TO CAPE FLATTERY. Page/Side: N/A

	LAST EDITION No new editions of chart 18007 will be published. It will be canceled on 02-Oct-24. Comparable or larger scale Electronic Navigational Chart (ENC) coverage is available. See "Cancellation of NOAA Paper and Raster Nautical Charts" in Section I of this LNM for details. A list of all canceled NOAA charts is at https://www.charts.noaa.gov/MCD/Dole.shtml .	NOS	--
--	---	-----	----

18010 **22nd Ed.** **01-SEP-12** **Last LNM: 29/20** **NAD 83** **38/24**

Chart Title: Monterey Bay to Coos Bay

Main Panel 1653 MONTEREY BAY TO COOS BAY. Page/Side: N/A

	LAST EDITION No new editions of chart 18010 will be published. It will be canceled on 02-Oct-24. Comparable or larger scale Electronic Navigational Chart (ENC) coverage is available. See "Cancellation of NOAA Paper and Raster Nautical Charts" in Section I of this LNM for details. A list of all canceled NOAA charts is at https://www.charts.noaa.gov/MCD/Dole.shtml .	NOS	--
--	---	-----	----

18020 **39th Ed.** **01-JAN-12** **Last LNM: 10/21** **NAD 83** **38/24**

Chart Title: San Diego to Cape Mendocino

Main Panel 1654 SAN DIEGO TO CAPE MENDOCINO. Page/Side: N/A

	LAST EDITION No new editions of chart 18020 will be published. It will be canceled on 02-Oct-24. Comparable or larger scale Electronic Navigational Chart (ENC) coverage is available. See "Cancellation of NOAA Paper and Raster Nautical Charts" in Section I of this LNM for details. A list of all canceled NOAA charts is at https://www.charts.noaa.gov/MCD/Dole.shtml .	NOS	--
--	---	-----	----

18022 **36th Ed.** **01-JUN-11** **Last LNM: 10/21** **NAD 83** **38/24**

Chart Title: San Diego to San Francisco Bay

Main Panel 1655 SAN DIEGO TO SAN FRANCISCO BAY. Page/Side: N/A

	LAST EDITION No new editions of chart 18022 will be published. It will be canceled on 02-Oct-24. Comparable or larger scale Electronic Navigational Chart (ENC) coverage is available. See "Cancellation of NOAA Paper and Raster Nautical Charts" in Section I of this LNM for details. A list of all canceled NOAA charts is at https://www.charts.noaa.gov/MCD/Dole.shtml .	NOS	--
--	---	-----	----

18600 **15th Ed.** **01-MAR-11** **Last LNM: 40/17** **NAD 83** **38/24**

Chart Title: Trinidad Head to Cape Blanco

Main Panel 1800 TRINIDAD HEAD TO CAPE BLANCO . Page/Side: N/A

	LAST EDITION No new editions of chart 18600 will be published. It will be canceled on 04-Dec-24. Comparable or larger scale Electronic Navigational Chart (ENC) coverage is available. See "Cancellation of NOAA Paper and Raster Nautical Charts" in Section I of this LNM for details. A list of all canceled NOAA charts is at https://www.charts.noaa.gov/MCD/Dole.shtml .	NOS	--
--	---	-----	----

18620 **24th Ed.** **01-FEB-12** **Last LNM: 29/20** **NAD 83** **38/24**

Chart Title: Point Arena to Trinidad Head;Rockport Landing;Shelter Cove

Main Panel 1806 POINT ARENA TO TRINIDAD HEAD. Page/Side: N/A

LAST EDITION No new editions of chart 18620 will be published. It will be canceled on 04-Dec-24. Comparable or larger scale Electronic Navigational Chart (ENC) coverage is available. See "Cancellation of NOAA Paper and Raster Nautical Charts" in Section I of this LNM for details. A list of all canceled NOAA charts is at <https://www.charts.noaa.gov/MCD/Dole.shtml>. NOS -- --

18640 27th Ed. 01-OCT-15 Last LNM: 33/20 NAD 83 38/24
ChartTitle: San Francisco to Point Arena

Main Panel 1816 SAN FRANCISCO TO POINT ARENA. Page/Side: A

LAST EDITION No new editions of chart 18640 will be published. It will be canceled on 04-Dec-24. Comparable or larger scale Electronic Navigational Chart (ENC) coverage is available. See "Cancellation of NOAA Paper and Raster Nautical Charts" in Section I of this LNM for details. A list of all canceled NOAA charts is at <https://www.charts.noaa.gov/MCD/Dole.shtml>. NOS -- --

18680 32nd Ed. 01-MAY-13 Last LNM: 33/16 NAD 83 38/24
ChartTitle: Point Sur to San Francisco

Main Panel 1866 POINT SUR TO SAN FRANCISCO. Page/Side: N/A

LAST EDITION No new editions of chart 18680 will be published. It will be canceled on 04-Dec-24. Comparable or larger scale Electronic Navigational Chart (ENC) coverage is available. See "Cancellation of NOAA Paper and Raster Nautical Charts" in Section I of this LNM for details. A list of all canceled NOAA charts is at <https://www.charts.noaa.gov/MCD/Dole.shtml>. NOS -- --

18700 23rd Ed. 01-SEP-13 Last LNM: 31/19 NAD 83 38/24
ChartTitle: Point Conception to Point Sur

Main Panel 1876 POINT CONCEPTION TO POINT SUR. Page/Side: N/A

LAST EDITION No new editions of chart 18700 will be published. It will be canceled on 04-Dec-24. Comparable or larger scale Electronic Navigational Chart (ENC) coverage is available. See "Cancellation of NOAA Paper and Raster Nautical Charts" in Section I of this LNM for details. A list of all canceled NOAA charts is at <https://www.charts.noaa.gov/MCD/Dole.shtml>. NOS -- --

18720 35th Ed. 01-APR-20 Last LNM: 28/20 NAD 83 38/24
ChartTitle: Point Dume to Purisma Point

Main Panel 1880 POINT DUME TO PURISIMA POINT - -. Page/Side: -

LAST EDITION No new editions of chart 18720 will be published. It will be canceled on 04-Dec-24. Comparable or larger scale Electronic Navigational Chart (ENC) coverage is available. See "Cancellation of NOAA Paper and Raster Nautical Charts" in Section I of this LNM for details. A list of all canceled NOAA charts is at <https://www.charts.noaa.gov/MCD/Dole.shtml>. NOS -- --

18740 46th Ed. 01-JUL-20 Last LNM: 10/21 NAD 83 38/24
ChartTitle: San Diego to Santa Rosa Island

Main Panel 1893 SAN DIEGO TO SANTA ROSA ISLAND - -. Page/Side: -

LAST EDITION No new editions of chart 18740 will be published. It will be canceled on 04-Dec-24. Comparable or larger scale Electronic Navigational Chart (ENC) coverage is available. See "Cancellation of NOAA Paper and Raster Nautical Charts" in Section I of this LNM for details. A list of all canceled NOAA charts is at <https://www.charts.noaa.gov/MCD/Dole.shtml>. NOS -- --

SECTION V - ADVANCE NOTICES

This section contains advance notice of approved projects, changes to aids to navigation, or upcoming temporary changes such as dredging, etc. Mariners are advised to use caution while transiting these areas.

SUMMARY OF ADVANCED APPROVED PROJECTS

<u>Approved Project(s)</u>	<u>Project Date</u>	<u>Ref. LNM</u>
None		

Advance Notice(s)

CALIFORNIA-NORTHERN CALIFORNIA-REPLACING SAFE WATER BUOYS WITH V-AIS

The U.S. Coast Guard will be removing the following Safe Water Buoys and replace them with Virtual AIS (V-AIS) Aid to Navigation:
LLNR 455 - Noyo Approach Lighted Whistle Buoy NA
LLNR 490 - Humboldt Bay Entrance Lighted Whistle Buoy HB

Direct any questions, comments, or feedback no later than 15 October, 2024 to SMB-D11ALAMEDA-SignalManagement@uscg.mil.
Charts: 18600 18620 18640 18680 18700 18720 18740 LNM: 34/24

CALIFORNIA-SAN FRANCISCO TO SAN DIEGO-REMOVAL OF RACONS ON AIDS TO NAVIGATION

The U.S. Coast Guard will be removing the RACONS from aids to navigation located along the California Coast due to the consistent failure of the signals and that they are no longer considered necessary for safe navigation of the waterways. While there is no specific timeline for the removal of this equipment, it will be coordinated with servicing and discrepancy responses. The removal of the RACONS will be announced by Broadcast Notice to Mariners and published in the Local Notice to Mariners as Chart and Light List corrections. These aids to navigation are:

Harding Rock Lighted Buoy HR (LLNR 4330): 37-50-17.661N 122-26-45.579W

Los Angeles Approach Channel Lighted Whistle Buoy 3 (LLNR 3107): 33-41-16.012N 118-14-24.050W

Long Beach Channel Approach Lighted Whistle Buoy LB (LLNR 3010): 33-41-24.013N 118-11-01.050W

Mariners are requested to respond in writing to the Coast Guard District office with any comments on this change at D11-SMB-D11-LNM@uscg.mil.

Any discrepancy for these or other Aids to Navigation should continue to be reported to the closest US Coast Guard Sector.

Charts: 18007 18010 18022 18640 18649 18650 18680 18746 18749 18765 18772 LNM: 33/23

NORTHERN CALIFORNIA-HUMBOLDT BAY-SEASONAL AID TO PERMANENT AID

The U.S. Coast Guard will be changing Humboldt Bay Lighted Bell Buoy 2 LLNR 8135 from a seasonal aid to permanent aid. Direct any questions, comments, or feedback no later than 15 October, 2024 to SMB-D11ALAMEDA-SignalManagement@uscg.mil.

Chart 18620 LNM: 34/24

SECTION VI - PROPOSED CHANGES

Periodically, the Coast Guard evaluates its system of aids to navigation to determine whether the conditions for which the aids to navigation were established have changed. When changes occur, the feasibility of improving, relocating, replacing, or discontinuing aids are considered. This section contains notice(s) of non-approved, proposed projects open for comment. SPECIAL NOTE: Mariners are requested to respond in writing to the District office unless otherwise noted (see banner page for address).

PROPOSED WATERWAY PROJECTS OPEN FOR PUBLIC COMMENT

<u>Proposed Project(s)</u>	<u>Closing</u>	<u>Docket No.</u>	<u>Ref. LNM</u>
None			

<u>Proposed Change Notice(s)</u>
None

SECTION VII - GENERAL

This section contains information of general concern to the Mariners. Mariners are advised to use caution while transiting these areas.

ANNOUNCEMENT – U.S. Coast Pilot® 7 and U.S. Coast Pilot® -NEW EDITIONS-Spring 2023

PUBLICATION–National Oceanic Atmospheric Administration (NOAA) – U.S. Coast Pilot 7, Pacific Coast:

California, 56th Edition, 2024, has been issued and is ready for free download and weekly updates at

www.nauticalcharts.noaa.gov/publications/coast-pilot/index.html.

Only Print-on-Demand (POD) bound copies are available for purchase; visit nauticalcharts.noaa.gov/publications/print-agents.html#coast-pilot.

The 2024 Edition cancels the preceding 2023 Edition, and incorporates all previous corrections.

LNM: 23/24

CALIFORNIA- OFFSHORE WASHINGTON-SALMON FISHERIES

NMFS has taken inseason actions in the commercial salmon fisheries and recreational salmon fisheries north of Cape Falcon. Effective 12:01am 11 July, 2024, the Chinook quota for the July-September north of falcon commercial salmon troll fishery will be modified to 13,800 Chinook. Effective 12:01am Saturday, 13 July, 2024 through 15 September, 2024, for the recreational fishery in the area between the U.S./Canada border and the Queets River (Neah Bay and La Push subareas), the daily bag limit in both subareas is two salmon per day for all salmon, except no chum beginning 1 August, 2024. All Coho salmon must be marked with a healed adipose fin clip. Chinook salmon minimum size is 24 inches, and coho salmon minimum size is 16 inches.

Charts: 18500 18520 18580 18600 18620

LNM: 29/24

CALIFORNIA-CALIFORNIA COAST-VOLUNTARY VESSEL SPEED REDUCTION

NOAA, U.S. Coast Guard and the Environmental Protection Agency request that all vessels 300 gross registered tons (GRT) or larger reduce speeds to 10 knots or less when transiting in the Vessel Speed Reduction zones off of San Francisco and Monterey from 1 May, 2024 until 31 December, 2024, and off Southern California from 1 May, 2024 until 15 December, 2024 to protect endangered whales. See 2024 NOAA USCG EPA VSR Announcement pdf in the enclosure section. These areas contain populations of endangered blue, humpback, and fin whales that are federally protected under the Federal Endangered Species Act (16 USC 1538 et seq.), the Marine Mammal Protection Act (16 USC 1361 et seq.), and the National Marine Sanctuaries Act (16 USC 1431 et seq.). Please report any collisions with whales or any observed injured or dead whales to the U.S. Coast Guard on VHF Channel 16. NOAA is asking for the public's help in tracking whales. Please report sightings through Whale Alert, a free application available at <https://www.whalealert.org/>. For more information, contact Sean Hastings at 805-705-1790 or email at sean.hastings@noaa.gov.

LNM: 16/24

CALIFORNIA-CAPE FALCON-SALMON FISHERIES

CALIFORNIA-CAPE FALCON-SALMON FISHERIES

NMFS has taken inseason action in the recreational Salmon fisheries South of Cape Falcon. Effective 11:59 pm 15 September, 2024, the recreational Salmon Fishery in the area between Cape Falcon and Humbug Mountain is closed to retention of Coho. The area remains open for Chinook with a daily two Salmon bag limit 24 minimum length. All other regulations remain in effect.

Charts: 18600 18640 18680 18700 18720 18740

LNM: 38/24

CALIFORNIA-USCG-NEW MERCHANT MARINER CREDENTIAL

The U.S. Coast Guard announced a new merchant mariner credential (MMC) set to launch on March 1, 2024. This milestone marks the first comprehensive revision of the mariner credential in nearly a decade and is strategically designed to enhance both quality of service and security within the Marine Transportation System (MTS). U.S. Coast Guard Marine Safety Information Bulletin (MSIB) 01-24, New Merchant Mariner Credential Passport Booklet Replacement, has been posted on the DCO's MSIB Site and announced at the National Maritime Center (CG-NMC) Home Page (uscg.mil). Please visit these resources for more information on the credential.

LNM: 09/24

CALIFORNIA-SAN DIEGO TO SANTA ROSA ISLAND-SUBMERGED GEAR OPERATIONS

M/V Independence is conducting submerged gear operations off the coast of California within 3 nautical miles of position 32° 37.73' N, 117° 31.34' W from 12-18 September, 2024. Mariners are advised to use caution when transiting the area due to submerged gear. The M/V Independence will be monitoring VHF FM channels 16 and 13 during these operations and has requested that mariners maintain avoid transiting within 2 nautical miles. For more information contact Steve Canale at (360) 434-8624.

Chart 18740

LNM: 37/24

CENTRAL CALIFORNIA- MONTEREY BAY- SEAFLOOR MAPPING SURVEYS

Monterey Bay Aquarium Research Institute will be conducting multibeam echosounder mapping of the upper Monterey Canyon between 14 October 2024 and 14 April 2025 in CA State Waters offshore of Moss Landing, east of 122-00-00W and between 36-51-59N and 36-39-59N. The R/V Paragon will be monitoring VHF-FM CH.-16. Mariners are requested to transit the area with caution. For more details or comments contact Charles Paull at (831) 775-1886 or Aaron Micallef at (831) 775-1747.

Chart 18680

LNM: 36/24

CENTRAL CALIFORNIA-MORRO BAY-GEOPHYSICAL SURVEY OPERATIONS

Golden State Wind LLC will be conducting low-energy geophysical site characterization surveys from 2 July, 2024 until 31 October, 2024 in federal waters. The survey vessel, GO ADVENTURER will begin transit to the Golden State Wind Lease Area approximately 50NM Northwest of Morro Bay, CA on 1 July, 2024. GO ADVENTURER, will be utilizing low energy survey equipment and deploying an Autonomous Underwater Vehicle (AUV) for geophysical surveys. Crew will be continuously monitoring VHF-FM Chan. 13 & 16. Mariners are requested to transit the area with caution. For more information or comments contact, Golden State Wind's Fisheries Liaison, Rachel Mahler at 805-680-8138 or rachel.mahler@oceanwinds.com or check www.goldenstatewind.com/#mariners for Project updates.

Chart 18700

LNM: 25/24

CENTRAL CALIFORNIA-TUOLUMNE RIVER-FLOODPLAIN AND SPAWNING HABITAT RESTORATION

Triangle Properties, Inc. will be conducting Floodplain and Spawning Habitat Restoration from 8 July, 2024 until 31 October, 2024 near Tuolumne River in Stanislaus Country near the town of La Grange at 37-39-59N 120-27-49W and continuing downstream for 1.5 miles west. Mariners are requested to transit the area with caution. For more details or comments contact Terrie Hansen at 916-768-2282.

Chart 18020

LNM: 28/24

LOWER COLORADO RIVER - REGATTA - LAKE HAVASU- MARINE EVENT

Eliminator Boats will be sponsoring the Eliminator Boats Regatta on 21 September, 2024, from 8:00am to 12:00pm in Lake Havasu, AZ. The event will consist of approximately 130 participants gathering at the Riviera Hotel. Mariners are advised to exercise due caution while transiting the area. For more information or comments, contact Jacob Fraleigh at 951-775-5253.

LNM: 37/24

LOWER COLORADO RIVER-LAKE HAVASU-MARINE EVENT

The National Water Ski Racing Association will be sponsoring the U.S. Open Water Ski Race Finals from 28-29 September, 2024 at 7:30am until 5:00pm each day in Lake Havasu. The event will involve approximately 30 vessels pulling water-skiers on an oval-shaped course in the vicinity of the Havasu Springs Resort. Mariners are requested to transit the area with caution. For more details or comments, contact Brian Vesely at 982-208-2263.

LNM: 38/24

NORTHERN CALIFORNIA- OFFSHORE CHANNEL ISLAND- POINT MUGU -SURVEY OPERATIONS

SAILDRONE, INC. is conducting 24/7 operations 10 September, 2024 thru 31 December, 2024 with up to four Uncrewed Surface Vehicles (USVs), called "SAILDRONE Voyager." The SAILDRONE Voyager is 10 meters in length, 6.4 meters tall, grey in color, has a tricolor light on top of the wing and is marked "SAILDRONE". This vehicle will be operating in the waters around predominantly offshore Channel Islands and Pt. Arguello and Pt. Mugu. Servicing is possible in major ports & harbors as far north as Morro Bay and as far south as San Diego. Mariners are requested to remain greater than 500 meters away from the vehicle. For more details or comments regarding this notice can be directed to Saildrone Mission Control at missioncontrol@saildrone.com or via phone at +1-510-722-6070

Chart 18653

LNM: 36/24

NORTHERN CALIFORNIA- PETALUMA RIVER-PIPELINE REMOVAL

Barnard Pipeline Inc on behalf of PG&E will be conducting a pipeline removal operation across the Petaluma River to remove an existing crossing near the City of Petaluma at 38-13-5N, 122-35-47W. Operations will be conducted between 3 September and 15 October 2024 from 0700 to 1800, Monday through Saturday. Construction equipment will be staged on land along the bank of the river. The pipeline will be pulled laterally from under the river and should not impede or impact boat traffic, but mariners are requested to move through the area with caution. For more details or questions contact Jeff Warshauer at (925) 973-8047.

Chart 18654

LNM: 34/24

NORTHERN CALIFORNIA-ALCATRAZ ISLAND-MARINE CONSTRUCTION

Manson Construction Co. will be conducting marine construction to the wharf at Alcatraz Island at 37-49-36N 122-25-15W. Construction will begin on 23 January, 2023 and be completed on 04 October, 2025. During construction DB HAGAR will be utilizing divers during low tide. Tug WESTAR will be assisting DB HAGAR and monitoring VHF-FM Chan. 13 and 16. Mariners are requested to transit the area with caution. For more details or comments contact Matt Lehmann at 510-529-1583.

Chart 18653

LNM: 50/22

NORTHERN CALIFORNIA-APTOS-RESEARCH BUOY DEPLOYMENT

The University of California San Diego CDIP has deployed a yellow research buoy approximately 1.1nm South West of Sealcliff State Beach pier in position 36-57-03.6N 121-55-15.6W. This buoy is lit with a yellow light flashing 5 one second flashes in a 20 second period. For further comments or details contact Dr. James Behrens at admin@cdip.ucsd.edu.

Chart 18680

LNM: 33/24

NORTHERN CALIFORNIA-BERKELEY MARINA-MARINE OPERATIONS

The Dutra Group will be conducting marine operations from 2 September, 2024 until 1 November, 2024 at the Berkeley Marina bound by positions:

37-52-07N 122-19-00W

37-52-08N 122-18-54W

37-52-03N 122-18-53W

37-52-02N 122-18-58W

C/B KELSO will be positioned via spuds around the marina docks D and E and will be equipped with a crawler crane, along with a workboat, flat deck barge and work skiffs. Work will occur during daylight hours, and the spud barge will likely maneuver around the marina during that time. If not moving into location and working, the crane barge will be spudded down on with flashers on all corners along with all other marine equipment. C/B KELSO and vessels will be monitoring VHF-FM Chan. 9, 16 & 77. Mariners are requested to transit the area with caution for more details or comments, contact Nicholas Dino at 707-389-0505.

Chart 18680

LNM: 34/24

NORTHERN CALIFORNIA-BERKELEY- DREDGING OPERATIONS

The Dutra Group will be conducting dredging operations from 30 August, 2024 thru 30 November, 2024 operating the marina 24 hours a day, 7 days a week at the Berkeley Marina. The Derrick Barge DB-24/BEAVER or MORTY and excavator dredge HORTON will be carrying out dredging operations. tow tug LASSEN and tender tug PHILLIS T will be monitoring VHF-FM Chan. 13, 14 & 80. Mariners are requested to transit the area with caution. For more details or comments contact Chris Milam at 415-218-6739.

Chart 18640

LNM: 35/24

NORTHERN CALIFORNIA-CRESENT CITY-SUBMERGED VESSEL

The Coast Guard received a report of a partially submerged vessel in the vicinity of Crescent City and Castle Rock in position 41-45-44N 124-15-57W. Mariners are advised to exercise due caution while transiting the area. For more details or comments contact USCG Sector Humboldt at 707-839-6113 or D11-SMB-SectorHumboldtBay-CommandCenter@uscg.mil.

Chart 18010

LNM: 23/24

NORTHERN CALIFORNIA-DELTA & RIVERS-AMERICAN RIVER-BRIDGE

CAPITAL CITY HWY (Route 51) BRIDGE-Caltrans is conducting rehabilitation of the bridge until 27 June, 2025. Work will be conducted during daylight hours, 7am to 5:30pm, Monday through Friday, and will include the use of barges, work boats, tugboats, turbidity curtains, and access piers. (See AmRiv_SiltCurtain_BargeLocation.pdf in the enclosure section.). During the workday, barges can be moved for the safety of navigation with one hour notice to the contractor via VHF-FM CH 16 or by cell at 916-532-8208. Mariners should contact the contractor before transiting the bridge to determine location of turbidity curtains. Barges will be unmanned and moored at their work locations overnight. Each corner of each barge will be lighted at night with steady burning red lights. At least 25 feet of horizontal clearance for navigation will be available at all times. Mariners are requested to transit the area with caution. For further information, contact the Coast Guard Bridge Office at 510-774-1204.

Chart 18662

LNM: 23/22

NORTHERN CALIFORNIA-DELTA & RIVERS-GRANT LINE CANAL-BRIDGE

TRACY BLVD BRIDGE- The bascule span of the bridge will be secured in the closed-to-navigation position from 1 October, 2024 until 31 January, 2025, for bridge rehabilitation. When closed the bridge provides 16' of vertical clearance at high water. Vessels that can transit the bridge while closed can continue to do so at any time. For further information, contact the Coast Guard Bridge Office at (510) 437-3461 or via email at D11Bridges@uscg.mil.

Chart 18661

LNM: 28/24

NORTHERN CALIFORNIA-DELTA & RIVERS-HONKER CUT-BRIDGE

8-MILE ROAD BRIDGE- San Joaquin County will secure the drawspan in the closed-to-navigation position from 1 October, 2024 until 31 January, 2025, to conduct repair/rehabilitation work. When closed the bridge provides 6' of vertical clearance at mean high water. Vessels that can transit the bridge while closed can continue to do so at any time. For further information, contact the Coast Guard Bridge Office at (571) 607-5820 or via email at D11Bridges@uscg.mil.

Chart 18661

LNM: 34/24

NORTHERN CALIFORNIA-DELTA & RIVERS-MIDDLE RIVER-BRIDGE

BACON ISLAND ROAD DRAWBRIDGE-The swing span of the bridge will be secured in the closed-to-navigation position from 1 October, 2024 until 31 January, 2025, for bridge rehabilitation. When closed the bridge provides 8' of vertical clearance at mean high water. Vessels that can transit the bridge while closed can continue to do so at any time. For further information, contact the Coast Guard Bridge Office at (510) 437-3461 or via email at D11Bridges@uscg.mil.

Chart 18661

LNM: 28/24

NORTHERN CALIFORNIA-DELTA & RIVERS-MIDDLE RIVER-BRIDGE

CA ROUTE 4-The downriver northeast dolphin has been partially removed, exposing the center steel pile of the dolphin. There is no protection around the steel pile. A red light is mounted atop the steel pile. Mariners are urged to transit the area with caution. For further information

NORTHERN CALIFORNIA-DELTA & RIVERS-MIDDLE RIVER-BRIDGE

contact the Coast Guard Bridge Office at 510-437-3516.

Chart 18661

LNM: 44/23

NORTHERN CALIFORNIA-DELTA & RIVERS-MIDDLE RIVER-BRIDGE

STATE ROUTE 4 BRIDGE-A tug and 52' X 122' spudded barge will be on-scene 0700 to 1730, through 24 September, 2024, to repair the northeast fire-damaged six timber pile dolphin at pier 5 of the bridge. The barge will encroach into the channel span by approximately 50 feet. During the workday the barge can be move for the safety of navigation with a 1-hour advance notice by calling the "VANTAGE" on VHF-FM CH 13/14/16. After working hours the barge can be moved with a 4-hour advance notice by calling the contractor at 707-980-2547. For further information contact the Coast Guard Bridge Office by telephone at 510-219-4366 or email at D11Bridges@uscg.mil.

LNM: 38/24

NORTHERN CALIFORNIA-DELTA & RIVERS-MINER SLOUGH-BRIDGE

MINER SLOUGH DRAWBRIDGE-Caltrans is requesting to secure the drawspan of the bridge in the closed-to-navigation position from 5:00am to 7:00pm on 27 October, 2024 for an community event. When closed the bridge provides 17 feet of vertical clearance at mean high water. Vessels able to transit the bridge while closed can continue to do so at any time. Comments concerning this proposed temporary schedule change will be received by the Coast Guard via email at D11Bridges@uscg.mil through 23 September, 2024.

Chart 18662

LNM: 37/24

NORTHERN CALIFORNIA-DELTA & RIVERS-OLD RIVER-BRIDGE

BNSF RAILROAD DRAWBRIDGE-Fender work is being conducted at the bridge, Monday through Saturday, 6 am to 4:30 pm, 25 March, 2024 through 27 September, 2024. A 50' X 80' flexi-float barge and a 50' X 110' material barge will be spudded down at the piers (See BNSF_OldRiver_Barge_Lighting01.pdf in the enclosure section). The material barge will be moored behind the fender system at all times and the flexi-float will be moored against the pier protection being worked in in the navigation span. For the safety of navigation, the flexi-float can be moved if 1-hours notice is given to the contractor at 206-391-5461 or 206-450-4639. Mariners are requested to transit the area with caution. For on-site conditions contact the contractor. For further information contact the Coast Guard Bridge Office at 510-437-3515 or D11-SG-M-DPW-Bridges@uscg.mil.

Chart 18661

LNM: 13/24

NORTHERN CALIFORNIA-DELTA & RIVERS-PETALUMA RIVER-BRIDGE

BLACK POINT RAILROAD BRIDGE- The upstream northeast side fenders and dolphin are damaged and may not offer adequate protection for the bridge or vessels. Mariners are urged to exercise caution when transiting through the bridge. Estimated time of repairs is unknown. For comments, contact the Coast Guard Bridge at 510-437-3516 or via email D11Bridges@uscg.mil.

Chart 18654

LNM: 32/24

NORTHERN CALIFORNIA-DELTA & RIVERS-SACRAMENTO RIVER-BRIDGE

RIO VISTA BRIDGE-Continuing rehabilitation of the bridge will require an advance notice from vessels for openings. Therefore, the lift span of the bridge will open on signal if at least 4-hour notice is given to the drawtender at 707-374-2134. For further information contact the Coast Guard Bridge Office at 510-437-3516 or D11Bridges@uscg.mil.

Chart 18661

LNM: 25/24

NORTHERN CALIFORNIA-DELTA & RIVERS-SACRAMENTO RIVER-BRIDGE

TOWER DRAWBRIDGE-Caltrans is requesting to secure the liftspan of the bridge in the closed-to-navigation position from 6:00am to 11:00pm on 27 October, 2024 for an community event. When closed the bridge provides 29 feet of vertical clearance at mean high water. Vessels able to transit the bridge while closed can continue to do so at any time. Comments concerning this proposed temporary schedule change will be received by the Coast Guard via email at D11Bridges@uscg.mil through 23 September, 2024.

Chart 18662

LNM: 37/24

NORTHERN CALIFORNIA-DELTA & RIVERS-SACRAMENTO RIVER-BRIDGE

REPLACEMENT BUTTE CITY BRIDGE- Replacement bridge construction continues Monday through Friday during daylight hours until 25 September, 2026. A temporary trestle, along with falsework, has been installed at the bridge site. High flood waters have caused damaged to the temporary trestle. The alternate navigation span during construction has moved from the center of the trestle to the east bank of the river. Mariners are requested to use extreme caution when transiting the construction site. The alternate navigation span will be moved back to its original position once water flows recede, and the trestle can be repaired. For on-scene conditions contact Golden State Bridge, Inc, at 415-720-6577 or 925-260-0403 or Caltrans at 530-941-8272 or 530-682-3931. For further information contact the Coast Guard Bridge Office at 510-437-3461.

LNM: 09/24

NORTHERN CALIFORNIA-DELTA & RIVERS-STEAMBOAT SLOUGH-BRIDGE

STEAMBOAT SLOUGH BRIDGE-The drawspan of the bridge is secured in the closed-to-navigation position from 6:00am on 15 July, 2024 through 6:00pm on 30 December, 2024, for rehabilitation work. When closed, the bridge provides 20 feet of vertical clearance at mean high water. Vessels able to pass through the bridge while closed can continue to do so at any time. Vessels that cannot pass the bridge when closed can take an alternate route to reach either side of the bridge. For further information contact the Coast Guard Bridge Office at 510-219-4366 or D11Bridges@uscg.mil.

Chart 18662

LNM: 27/24

NORTHERN CALIFORNIA-DELTA & RIVERS-THREE MILE SLOUGH-BRIDGE

THREE MILE SLOUGH BRIDGE- During rehabilitation work, cracks were found in the floor beam connectors which attach the lift span to the superstructure. As a result, emergency repairs will need to be conducted before the bridge can resume normal operations. The lift span is secured closed until further notice. Estimated time when the bridge will resume normal operations is unknown. In the closed position the bridge provides 12 feet of vertical clearance at mean high water. Vessels able to pass through the bridge while closed can continue to do so at any time. For more information contact the Coast Guard by telephone at 571-607-2207 or by email at D11Bridges@uscg.mil.

Chart 18661

LNM: 50/23

NORTHERN CALIFORNIA-DELTA & RIVERS-TURNER CUT-BRIDGE

ZUCKERMAN BROTHERS BRIDGE-The retractable span of the bridge is secured in the closed-to-navigation position due to mechanical and electrical issues. When closed the bridge provides 16 feet of vertical clearance at mean high water. Vessels able to transit the bridge while closed can continue to do so at any time. Estimated time of repair, unknown. For further information contact the Coast Guard Bridge Office at 510-467-3516.

Chart 18661

LNM: 25/23

NORTHERN CALIFORNIA-ECHOSOUNDER SURVEY-MONTEREY BAY

R/V PARAGON will be conducting a Multibeam Echosounder Survey operations in the vicinity of Moss Landing in position 36-48-00N, 121-47-00W for the following dates pending weather.

2024: 14 October, 13 November, 5 December and 19 December.

2025: 16 January, 13 February, 13 March and 10 April.

R/V PARAGON will monitor VHF-FM Chan. 13 and 16. Mariners are requested to transit the area with caution. For more details or comments contact Aaron Micallef at 831-775-1747.

Chart 18700

LNM: 31/24

NORTHERN CALIFORNIA-HUMBOLDT-NAVIGATION OBSTRUCTION

Humboldt Bay Light 9 (LLNR 8195.1) is damaged and an obstruction to navigation. The 60 ft single steel pile is at a 60-degree angle to the East. The top 5ft X 5ft cage is missing and the pile is visible at a negative low tide. At high tide the pile is not visible. Mariners are requested to transit the area with caution. For more details or comments contact Sector San Francisco Waterways Management Division at SFWaterways@uscg.mil.

Chart 18010

LNM: 20/24

NORTHERN CALIFORNIA-HUMBOLDT-TEMPORARY BUOY OFF STATION

Humboldt Bay Light 9 Temporary Lighted Buoy, marking the shoal and wreck of Humboldt Bay Light 9, is currently off station in position 40-45-27N 124-13-25W. Mariners are requested to transit the area with caution. For more details or comments contact Sector San Francisco Waterways Management Division at SFWaterways@uscg.mil.

Chart 18620

LNM: 31/24

NORTHERN CALIFORNIA-HUMBOLDT-WIND ENERGY PROJECT

The Humboldt Wind Energy Area includes the joint Fisheries Communication Plan developed by RWE and Vineyard Offshore to inform and guide communications between leaseholders in the Humboldt Wind Energy Area located 17-29 nautical miles off the coast of Humboldt, the fishing industry, and other marine users. The current version of this Plan, along with all subsequent revisions, will be available on the Companies' websites. RWE: <https://americas.rwe.com/-/media/RWE/RWE-USA/documents/rwe-vineyard-offshore-joint-fcp.pdf>. Vineyard Offshore: <https://www.vineyardoffshore.com/california>. Please provide any feedback on this plan via email to Rick Robins at rick.robins@rwe.com 757-876-3778 or Lucia Ordonez at lordonez@vineyardoffshore.com 707-572-9011.

Chart 18620

LNM: 06/24

NORTHERN CALIFORNIA-LITTLE ALCATRAZ-SUNKEN VESSEL

The Coast Guard has received a report of a sunken vessel in vicinity of Little Alcatraz off of Alcatraz Island in position 37-49-41N 122-25-37W with intentions of salvage when possible. Mariners are requested to transit the area with caution. For more details or comments, contact Coast Guard Sector San Francisco at 415-399-3647.

Chart 18650

LNM: 30/24

NORTHERN CALIFORNIA-MONTEREY BAY-BUOY DEPLOYMENT

University of California Santa Barbara has deployed research Wave Buoy Station CDIP 266 in position 36-50-41N 121-49-28W with characteristics of a flashing yellow light every 5 seconds. Mariners are requested to transit the area with caution. For more details or comments contact University of California Santa Barbara at 858-534-3032 or admin@cdip.ucsb.edu.

Chart 18685

LNM: 17/23

NORTHERN CALIFORNIA-MONTEREY- MICROVESSEL DATA COLLECTION

The Monterey Bay Aquarium Research Institute (MBARI) will be conducting 24/7 autonomous, uncrewed maritime vehicle operations of one Oshen microvessel from 16 September, 2024 through 18 October, 2024 in Monterey Bay. Plans to deploy the vehicle in the vicinity of Moss Landing and will operate on a line between 36-47-83N, 121-50-81W extending West to 36-41-48N, 122-22-55W. Operations consist of scientific ocean data collection. The vessel carries no fuel, lubricants, or hydrocarbons, is wind powered, remotely attended from MBARI, moving at speeds of 2kts, and designed to give way or part if encountered by a vessel. It is approximately 40"x10" in size, and black in color, with a contact plaque and mast extending 1 meter above the water surface carrying a red colored sail and white all around light. Mariners are advised to use caution when transiting the area. For more details or comments contact authorities and mariners can contact Brian Kieft at MBARI: 831-334-7658, or Oshen at +44 7796913305

Chart 18685

LNM: 36/24

NORTHERN CALIFORNIA-MONTEREY- WAVEGLIDER DATA COLLECTION

The Monterey Bay Aquarium Research Institute (MBARI) will be conducting 24/7 autonomous, unmanned maritime vehicle operations of two Liquid Robotics, Inc. Wavegliders from 25 January, 2024 until 31 December, 2024 between latitudes 36-18-00N and 37-12-00N and will extend shoreward from as far west as 122-58-35W longitude. Operations consist of scientific ocean data collection. Wave Glider carries no fuel, lubricants, or hydrocarbons, is wave powered, remotely attended from MBARI, moving at speeds of ~1kt, and designed to give way or part if encountered by a vessel. It is approximately 8' x 2' (surfboard size), yellow/copper in color, with a contact plaque and mast extending 1 meter above the water surface supporting a flag. Mariners are advised to use caution when transiting the area. For further information, authorities and mariners can contact MBARI at 831-775-1700, waveglider@listserver.mbari.org, or Liquid Robotics 24/7 WGO Operations at 888-574-4574 or 408-636-4205.

Chart 18685

LNM: 05/24

NORTHERN CALIFORNIA-MONTEREY-DIVING OPERATIONS

Surf to Snow Environmental Resource Management (S2S) and Power Engineering Construction (PEC) will be conducting SCUBA and surface supplied diving operations from 20 June, 2024 through 30 November, 2024 in the vicinity of the Monterey Bay Aquarium, Monterey 36-37-10N 120-54-04. The M/V WEBSTER will be on scene monitoring VHF-FM Chan. 68. Mariners are requested to transit the area with caution. For more details or

NORTHERN CALIFORNIA-MONTEREY-DIVING OPERATIONS

comments, contact Kameron Strickland at 925-557-6459.

Chart 18010

LNM: 26/24

NORTHERN CALIFORNIA-MOSS LANDING-RESEARCH BUOY DEPLOYMENT

Monterey Bay Aquarium Research Institute has deployed a 2' round yellow unlit research buoy until 31 December, 2024 approximately 6nm South East of Moss Landing in position 36-44-34.8N 121-53-13.2W. For further comments or details contact Brent Jones at 831-775-2064.

Chart 18680

LNM: 33/24

NORTHERN CALIFORNIA-NAPA- DIRECTIONAL DRILLING OPERATION

PG&E will be conducting horizontal directional drilling operations below the Napa River to install a pipeline crossing in Napa at 38-14-30N 122-17-10W from 22 April, 2024 until 31 October, 2024. Construction equipment will be staged on land above the adjacent shorelines. Mariners are requested to transit the area with caution. For more details or comments contact Garrett Pon at 925-658-0672.

Chart 18654

LNM: 11/24

NORTHERN CALIFORNIA-OAKLAND INNER HARBOR-BRIDGE

FRUITVALE AVE RAIL BRIDGE-The lift span of the rail bridge is kept in the partially opened position providing 80 feet of vertical clearance at mean high water. The lift span can be raised to its fully open position upon request to the drawtender at the Miller Sweeny (Fruitvale Ave) bridge. The following is the new navigation lighting configuration at the rail bridge.

1. When the bascule span of the highway bridge is in the closed-to-navigation position and the lift span of the railroad bridge is in the partially open position, providing 80 feet of vertical clearance at mean high water, the lift span center channel navigation lights will show a red 180-degree center span light on the upstream and downstream lower edge of the span.
2. When the bascule span of the highway bridge is in the fully opened position and the lift span of the railroad bridge is in the partially opened position, providing 80 feet of vertical clearance at mean high water, the lift span center channel navigation lights will show one solid 360-degree green light and one flashing 360-green light on the upstream and downstream lower edge of the span, providing a range for the centerline of the channel between both highway and railroad bridges.
3. When the bascule span of the highway bridge is in the fully opened position and the lift span of the railroad bridge is in the fully opened position, providing 135 feet of vertical clearance at mean high water, the lift span center channel navigation lights will show two solid 360-degree green lights on the upstream and downstream lower edge of the span, providing a range for the centerline of the channel between both highway and railroad bridges.

For further information contact the Coast Guard Bridge Office at 510-437-3516.

Chart 18649

LNM: 25/24

NORTHERN CALIFORNIA-OAKLAND- DREDGING OPERATIONS

The Dutra Group will be conducting dredging operations from 06 September, 2024 thru 30 November, 2024 operating the marina 24 hours a day, 7 days a week at the Port of Oakland. The Derrick Barge DB-24/BEAVER will be carrying out dredging operations. tow tug HEIDI L. BRUSCO. Mariners are requested to transit the area with caution. For more details or comments contact tender tug PHYLLIS T OR BECKY T. All equipment will be monitoring VHF-FM Chan. 13, 14 & 80 or contact Chris Milam at 415-218-6739.

Chart 18640

LNM: 36/24

NORTHERN CALIFORNIA-OAKLAND-MARINER OPERATIONS

The Dutra Group will be conducting marine operations for the emergency pier rehabilitation occurring at the Oakland Airport ALSF Pier from 19 April, 2024 until 7 December, 2024. A flexi Barge along with a tugboat and small skiff will be anchored near the pier along with being tied to it. The Barges will be spudded in with flashers on all corners along with all other marine equipment, the upstream and downstream corners of each barge will be lighted at night with steady burning red lights and will be monitoring VHF-FM Chan. 9, 16 & 68A. Mariners are requested to transit the area with caution. For more details or comments contact Lucas Walker at 707-378-3822.

Chart 18650

LNM: 16/24

NORTHERN CALIFORNIA-OFFSHORE CAPE MENDOCINO-SURVEY OPERATIONS

SAILDRONE, INC. is conducting operations with an Uncrewed Surface Vehicle (USV), called "SAILDRONE SURVEYOR." The SAILDRONE Surveyor is 22 meters in length, 14 meters tall, painted orange with a tri-color light on top and marked SAILDRONE SURVEYOR. This vehicle will mainly be operating in the waters 25-100 nautical miles offshore of San Francisco & Monterey Bays within the following areas:

Area 1

37-28-30N 123-10-16W

37-28-30N 122-47-49W

37-03-10N 122-47-49W

37-03-10N 123-10-16W

Area 2

37-28-40N 124-56-44W

37-28-40N 122-46-00W

35-49-12N 122-46-00W

37-49-12N 124-56-44W

Mariners are requested to transit the area with caution. For more details or comments, contact Saildrone Mission Control at missioncontrol@saildrone.com or via phone at 510-722-6070.

Charts: 18640 18680

LNM: 24/24

NORTHERN CALIFORNIA-OFFSHORE-COMMERCIAL SALMON FISHERIES

Effective 12:01 am Sunday, 1 September, 2024, 5,700 coho salmon of the impact neutral rollover of the remaining august coho salmon quota of the recreational salmon fishery in the area from cape falcon to the Oregon and California border will be transferred to the September recreational non-mark-selective fishery from Cape Falcon to Humbug Mountain. This transfer increases the non-mark selective Coho salmon quota in the 1-30

NORTHERN CALIFORNIA-OFFSHORE-COMMERCIAL SALMON FISHERIES

September, 2024 recreational fishery from 25,000 non-mark-selective Coho salmon, to a revised quota of 30,700 coho salmon.

Charts: 18640 18680

LNM: 36/24

NORTHERN CALIFORNIA-OFFSHORE-COMMERCIAL SALMON FISHERIES

Effective 12:01 am Tuesday, 3 September, 2024 the recreational fishery in the area between the U.S. and Canada border and Cape Alava (Neah Bay subarea) is closed to fishing for salmon. Effective 12:01 am Wednesday, 4 September, 2024, through 11:59 pm Wednesday, 4 September, 2024, the recreational fishery in the area between Queets River and Cape Falcon (Westport and Columbia River subareas) is open to fishing for salmon. Daily limit of two salmon, no more than one of which may be a Chinook. All Coho must be marked with a healed adipose fin clip. Chinook minimum size limit of 22 inches. Grays harbor and Columbia river control zones closed.

Charts: 18640 18680

LNM: 36/24

NORTHERN CALIFORNIA-OLD RIVER-HAZARD TO NAVIGATION

The Coast Guard has received a report of downed powerlines in Old River from Mandeville Island to Webb Tract. The downed powerlines have been cut by PG&E and remain laying on the bottom of Old River. Mariners are recommended to avoid anchoring in the area and transit the area with caution. For details or comments contact Coast Guard Sector San Francisco Waterways at 510-612-9729.

Chart 18661

LNM: 01/23

NORTHERN CALIFORNIA-OYSTER COVE MARINA-BUOY DEPLOYMENT

Kilroy Realty has deployed two buoys at the entrance to Oyster Cove Marina at 37-40-03.09N 122-23-13.04W 37-40-03.05N 122-23-12.61W

Both buoys are white 36" cylinders with orange retroreflective bands and an orange diamond marked "Danger Barrier Marina Closed". Both buoys are lit at night with a yellow flashing light flashing once every 4 seconds, Fl Y4s. Between the break wall and the pier there is a white line with small floats connected to both buoys. Mariners are advised to use caution in the area to avoid entanglement. For comments or details, contact Travis Lund at 510-419-2392.

Chart 18650

LNM: 48/23

NORTHERN CALIFORNIA-PETALUMA-MARINE CONSTRUCTION

The Dutra Group will be conducting marine construction on the Petaluma River turning basin from 15 June, 2024 until 30 November, 2024 at positions:

- 38-14-05N 122-38-17W
- 38-1-06N 122-38-13W
- 38-14-09N 122-38-15W
- 38-14-08N 122-38-18W

The main construction activities include the demolition of a deteriorated timber pier access site structure, metal gangways, floating docks and removal of existing wood and steel piles. The new construction will include the installation of the replacement 3800 SQFT. Concrete floating docks, ADA-compliant steel gangways with an associated gangway landing platform, and (14) 16-inch diameter steel support piles within the Petaluma turning basin located within the Petaluma River of the City of Petaluma. C/B KELSO equipped with a 230-ton crawler crane, material supply barge, work boat, and work skiffs will be monitoring VHF-FM Chan. 9, 16, 76 & 80. At the end of the shift, C/B KELSO will be spudded in with miscellaneous marine equipment side tied with flashers on all corners. Mariners are requested to transit the area with caution. For more details or comments, contact Jason Tse at 415-300-5336.

Chart 18654

LNM: 23/24

NORTHERN CALIFORNIA-PETALUMA-MARINE CONSTRUCTION

San Rafael Yacht Harbor will be conducting diving and marine operations from 16–19 September, 2024 in the vicinity of Adobe Creek, Petaluma, CA at 38-12-31N 122-34-55W. T/B HUMPHRY will be monitoring VHF-FM Chan. 14 & 79. Mariners are requested to transit the area with caution. For more details or comments contact Mr. Matt Butler at 415-847-5539.

Chart 18654

LNM: 38/24

NORTHERN CALIFORNIA-PIGEON POINT-TEMPORARY DISESTABLISHMENT

The U.S. Coast Guard has temporarily disestablished the light on Pigeon Point Light (LLNR 320) for approximately 18 months due to planned maintenance. The aid is in position 37-10-54.281N, 122-23-38.253W. Direct any questions or comments regarding this project to Roger Wykle at rwykle@sustainable-group.com or (925) 899-9721.

Chart 18022

LNM: 08/24

NORTHERN CALIFORNIA-RIO VISTA-MARINE OPERATIONS

The Dutra Group will be conducting marine operations from 18 June, 2024 until 31 December, 2024 along Hastings Island along Cache Slough down to the Hastings Island Bridge. TM 20 Barge equipped with either the Bucyrus Erie 88B crane or 390 Long Reach Excavator along with a tender workboat, material supply barges, and miscellaneous work skiffs will be utilized on the project. At the end of each shift, crane barges will be spudded in with miscellaneous marine equipment side-tied with flashers on all corners and will be monitoring VHF-FM Chan. 9, 16, 68A or 80. Mariners are requested to transit the area with caution. For more details or comments, contact Jason Tse at 415-300-5336.

Chart 18661

LNM: 23/24

NORTHERN CALIFORNIA-SACRAMENTO RIVER-MARINE OPERATIONS

The Dutra Group with U.S. Army Corps of Engineers Project #456852 will be conducting marine operations for the levee construction from 8 July, 2024 until 30 November, 2024 occurring along the Sacramento River between the Tower Bridge and Freeport Bridge. The work consists of furnishing all labor, materials, equipment, and all incidental related work to complete the levee rehabilitation. C/B TM20, C/B #12, along with a work boat, tugboat and rotation of flat deck barges will be monitoring VHF-FM Chan. 9, 16 & 68A. The crane barge, as well as the workboats will mobilize from Dutra's Rio Vista Yard to Sacramento. The flat deck barges will be in-transit between the job site and the San Rafael Rock Quarry and will be moored at pre-existing moorings along the Sacramento River during mobilization. This rotation will persist for most of the duration of the project. Work will occur during daylight hours but maneuvering of barges outside of the construction area may continue at all hours. At the end of each shift, the barges will be spudded in with flashers on all corners along with all other marine equipment. Mariners are requested to transit the area with

NORTHERN CALIFORNIA-SACRAMENTO RIVER-MARINE OPERATIONS

caution. For more details or comments, contact Scott Brooks at 707-333-5029.

Chart 18661

LNM: 28/24

NORTHERN CALIFORNIA-SACRAMENTO RIVER-REDUCED VERTICAL CLEARANCE

Overhead power cables upstream of Sacramento River at 38-03-54N 121-47-09W have a reported reduced vertical clearance to 119.5'.

LNM: 22/16

NORTHERN CALIFORNIA-SAN FRANCISCO BAY-BRIDGE

WEST SPAN SAN FRANCISCO/OAKLAND BAY BRIDGE-During periods of rain, the operation of the navigation lights and fog signals on the bridge are unreliable and may be extinguished. Investigations to determine the cause of the unreliability of the lights and signals, and plans to repair, are in the works. Mariners should exercise caution when transiting the bridge until the navigation lights and fog signals are once again reliable. Report outages of the navigation lights and the fog signals to the U.S. Coast Guard at 510-219-4366.

Chart 18650

LNM: 52/23

NORTHERN CALIFORNIA-SAN FRANCISCO BAY-BRIDGE

GOLDEN GATE BRIDGE-Three 54' temporary under deck platforms; one 125' and one 1725' north of the south tower; and one 2125' south of the north tower have been installed at the bridge. Temporary platforms reduce vertical clearance at the bridge by no more than 14'. The bridge's maintenance travelers are in use during the project and will remain outboard of the furthest north and furthest south temporary platforms. The temporary platforms and maintenance travelers are lighted at night with all-round red lights (see PlatformLighting_GG_Bridge_24Apr24.pdf at the end of this notice). For navigational safety the maintenance travelers can be moved by contacting the Golden Gate Bridge at 415-923-2220. Work is being conducted Monday through Saturday, 0700-1700 and 2100-0500. For conditions at the bridge, mariners can contact the contractor at 415-716-0384. For more details or comments contact the Coast Guard Bridge Office at 510-437-3516.

Chart 18649

LNM: 17/24

NORTHERN CALIFORNIA-SAN FRANCISCO BAY-BRIDGE

SAN MATEO-HAYWARD BRIDGE-Work continues on the causeway portion of the bridge, east of pier 38, 0700 to 1530, Monday through Friday, until 30 November, 2024. Various size barges will be used during the project, the largest being a 100' X 20' flexifloat barge. During the workday, barges will either be spudded down or tied to the bridge piers, no anchors or anchor line will be utilized. After regular working hours the unmanned barge will be left on-site. For the safety of navigation, the barges can be moved with one-hour advance notice. For conditions at the bridge mariners can contact Golden State Bridge, Inc., on VHF-FM Marine Radio Channels 13, 14, and 16 or by cell phone at 707-246-0725, 925-260-2104, or 925-382-7288. For more details or comments contact the Coast Guard Bridge Office at 510-437-3515.

LNM: 07/24

NORTHERN CALIFORNIA-SAN FRANCISCO BAY-BRIDGE

GOLDEN GATE BRIDGE- The Golden Gate Bridge Highway and Transportation District is proposing to install a temporary platform, the length of the bridge from tower to tower, to support the construction of the Golden Gate Suspension Bridge Seismic Project. The proposed temporary platform will extend 5 feet beyond the east and west edges of the bridge and will reduce the vertical clearance of the bridge by no more than 10 feet. (See Temp_Platform_GGB.pdf) The work is anticipated to begin in the fall of 2025. The Coast Guard is seeking comments from mariners who may be impacted from this temporary reduction in vertical clearance at the bridge. Comments concerning this project will be received by telephone at 510-219-4366 or by email at D11Bridges@uscg.mil through 10 October, 2024.

LNM: 38/24

NORTHERN CALIFORNIA-SAN FRANCISCO BAY-BRIDGE

SAN MATEO/HAYWARD BRIDGE-Caltrans will be conducting dive operations at the bridge from 7 a.m. to 4 p.m. 7-10 Oct and 21-24 Oct, 2024. Diver and/or diver's breathing gas hose may be on or near the surface and heavy equipment is on the vessel's deck. Excessive wake may cause injury to deck crew as well as the diver. All mariners are requested to contact the Caltrans vessel, "OFFICIAL BUSINESS", on VHF-FM CH 16 or by cell 805-748-6011, approximately 30 minutes before transiting the bridge dive site. All vessels are requested to use extreme caution while transiting the dive site.

LNM: 36/24

NORTHERN CALIFORNIA-SAN FRANCISCO BAY-DETERIORATING CONCRETE PILINGS

Deteriorating concrete pilings above and below the waterline are present in the vicinity of the the south edge of Southampton Shoal Light (LLNR 5480). Mariners are requested to transit the area with caution. For more details or comments contact LT Miranda Brumbaugh at 510-437-2978 or Miranda.E.Brumbaugh@uscg.mil.

Chart 18649

LNM: 23/15

NORTHERN CALIFORNIA-SAN FRANCISCO BAY-DREDGE OPERATIONS

Lind Marine will conduct dredge operations at Paradise Cay in Tiburon, CA at 37-54-45N 122-28-31W from 0700 to 1900 daily, 15 Aug – 15 Oct 24. Vessels will transport dredged material to Alcatraz (SF-11) disposal site. Material handlers GRETA JEAN LIND, DIGBY, Tug BERNICE LIND, tug HERO, tug LYNX, Spud barge LB25, and 02 small 300 cy dump scows will be on site monitoring VHF-FM Chan. 11, 13, 14 and 16. Mariners are requested to transit the area with caution. For more details or comments contact Elizabeth Boyd at 707-805-4440.

Chart 18654

LNM: 34/24

NORTHERN CALIFORNIA-SAN FRANCISCO BAY-GALLINAS CREEK-BRIDGE

TEMPORARY FLOATING BRIDGE-PG&E will be installing a temporary floating bridge at the mouth of the creek in position 38-00-59N 122-30-06W to facilitate the reconstruction of electrical transmission towers on the north side of the creek. Installation of the temporary bridge will begin on 16 Sep, 2024 and will completely cross the creek on 12 Oct, 2024. The center of the bridge will have a removable span to allow the passage of vessels. The span will provide 24 feet of horizontal clearance and will remain open at all times unless equipment is being transported across the bridge. The upstream and downstream edges of the bridge will be lighted at night with steady burning red lights. When open, the upstream and downstream corners of the navigation span will be lighted at night with steady burning green lights (See enclosure GallinasCkFloatBrg_Lighting.pdf at the end of this notice). The temporary floating bridge will be removed by 15 Jan, 2025. For further information contact the Coast Guard Bridge Office by email at D11Bridges@uscg.mil or by telephone at 571-607-2207.

NORTHERN CALIFORNIA-SAN FRANCISCO BAY-GALLINAS CREEK-BRIDGE

LNM: 33/24

NORTHERN CALIFORNIA-SAN FRANCISCO- DREDGING OPERATIONS

The Dutra Group will be conducting dredging operations from 30 August, 2024 thru 30 September, 2024 operating 24 hours a day, 7 days a week at the Port of San Francisco Fisherman’s Wharf 37-48-34N 122-25-90W. The clamshell dredge DB 24, MORTY or EXCAVATOR BARGE will be carrying out dredging operations. tow tug LASSEN and tender tug BECKY T will be monitoring VHF-FM Chan. 13, 14 & 82. Mariners are requested to transit the area with caution. For more details or comments contact Chris Milam at 415-218-6739.

Chart 18640

LNM: 35/24

NORTHERN CALIFORNIA-SAN FRANCISCO-BERKELEY-GEOTECHNICAL DRILL TESTING

Gregg Drilling and Testing will be conducting Overwater Geotechnical Investigations from 04 September, 2024 thru 20 September, 2024 from 0700 to 1900 In the area of the old Berkeley Pier 37-01-47 N, 122-19-5.W) to (37-57-30N, 122-19-28W) The R/V Quin Delta will be conducting the drill operations and monitoring channels VHF 16, 13 and 14. Mariners are advised to use caution when transiting the area. For further information, comments or details contact Captain Tim O’Donnell by phone at (949) 254-5190 or e-mail at BEARatSEA@gmail.com

Chart 18640

LNM: 35/24

NORTHERN CALIFORNIA-SAN FRANCISCO-MOORING SURVEY

The Coastal Oceanography Group at UC Davis Bodega Marine Laboratory has deployed 2 permanent research buoys at Timber Cove 38-30-10N 123-16-37W and Fort Ross 38-30-05N 123-16-10W. Moorings will be marked at the surface with a yellow 14” trawl float and 12’ spar buoy with radar reflector, flag and amber light flashing 30 flashes per minute. Mariners are requested to transit the area with caution. For more details or comments contact David Dann at 707-875-1931.

Chart 18649

LNM: 37/24

NORTHERN CALIFORNIA-SAN FRANCISCO-SURVEY OPERATIONS

SAILDRONE, INC. will be conducting oceanographic survey operations and will operate an Unmanned Surface Vehicles called SAILDRONE EXPLORER and SAILDRONE VOYAGER until 30 September, 2024. The operations will be conducted 0.8 nm South of General Anchorage 9 in San Francisco Bay and bounded by the following coordinates:

Area 1:

- 37-44-30N 122-18-46W
- 37-43-47N 122-17-53W
- 37-43-16N 122-18-26W
- 37-44-01N 122-19-22W

Area 2:

- 37-42-13N 122-18-26W
- 37-42-41N 122-17-19W
- 37-41-45N 122-16-34W
- 37-41-11N 122-17-45W

The SAILDRONE EXPLORER is 23 feet long, 16 feet tall, painted orange with a white all- around light on top and marked SAILDRONE. The SAILDRONE VOYAGER is 33 feet long, 21 feet tall and painted orange or gray with a tri-color light on top. Saildrones will broadcast AIS and travel at a speed up to 5 knots. Mariners are requested to transit the area with caution. For more details or comments contact Saildrone Mission Control at missioncontrol@saildrone.com or 510-722-6070.

Chart 18749

LNM: 28/24

NORTHERN CALIFORNIA-SAN FRANCISCO-SURVEY OPERATIONS

SAILDRONE, INC. will be conducting offshore oceanographic research and survey testing and will operate Unmanned Surface Vehicles (USV’s) called SAILDRONE EXPLORER and SAILDRONE VOYAGER until 30 September, 2024, in the area between the eastbound traffic lane and southbound traffic lane extending out to the Pioneer Canyon Area. The operations will be conducted within the following coordinates:

- 37-40-09N 122-46-01W
- 37-39-34N 122-44-19W
- 37-13-12N 122-44-17W
- 37-25-36N 123-13-15W

The SAILDRONE EXPLORER is 23 feet long, 16 feet tall, painted orange with a white all- around light on top and marked SAILDRONE. The SAILDRONE VOYAGER is 33 feet long, 21 feet tall and painted orange or gray with a tri-color light on top. Saildrones will broadcast AIS and travel at a speed up to 5 knots. Mariners are requested to transit the area with caution. For more details or comments contact Saildrone Mission Control at missioncontrol@saildrone.com or 510-722-6070.

Chart 18649

LNM: 28/24

NORTHERN CALIFORNIA-SAN LEANDRO BAY-BRIDGE

BAY FARM ISLAND HIGHWAY AND PEDESTRIAN BRIDGES-The pier protection system at the bridges have deteriorated and may not offer adequate protection for the bridges as well as vessels transiting the bridge. Mariners are urged to transit both bridges with caution. The bridge owner is in the process of designing a replacement pier protection system. For more details or comments contact the Coast Guard Bridge Office at 510-437-3514.

Chart 18649

LNM: 31/22

NORTHERN CALIFORNIA-SAN LEANDRO BAY-DREDGING OPERATIONS

The Aeolian Yacht Club along with Salt River Construction will be conducting dredging operations from 3 August, 2024 until 12 October, 2024 near San Leandro Bay approximately 500 feet East of San Leandro Bay Bike Bridge and 100 feet North of the shoreline near 37-44-55N 122-14-03W. An anchoring of movable dock section to the sand bar South of the San Leandro Bay channel. Anchored /unattached dock sections will be anchored and lighted. Aeolian Yacht Club will be monitoring VHF-FM Chan. 14, 16, 68 & 72. Mariners are requested to transit the area with caution. For more details or comments, contact Bill Davis at 510-910-2357.

Chart 18650

LNM: 31/24

NORTHERN CALIFORNIA-SAN LEANDRO-SUBMERGED VESSEL

NORTHERN CALIFORNIA-SAN LEANDRO-SUBMERGED VESSEL

A fully submerged 16FT ski boat near San Leandro Marina in position 37-41-22N 122-11-31W. Mariners are requested to transit the area with caution. For more details or comments, contact Sector San Francisco Waterways Management Division at SFWaterways@uscg.mil.

Chart 18650

LNM: 19/24

NORTHERN CALIFORNIA-SAN LEANDRO-SUBMERGED VESSEL

A partially capsized and submerged 40 foot twin masted sailing vessel at the entrance to San Leandro Marina at approximate coordinates 37-41-40N 122-11-37W. San Leandro Public works will be contracting removal of the vessel. To report updates or request additional information please contact Sector San Francisco Waterways Management Division at SFWaterways@uscg.mil.

Chart 18650

LNM: 09/24

NORTHERN CALIFORNIA-SAN LORENZO RIVER-BRIDGE

LAUREL STREET BRIDGE- Work will resume for the installation of a new water conveyance pipeline. To conduct the work, a bucket truck on the bridge deck will be utilized to suspend a mobile platform from the side of the bridge, vertical clearance will be reduced by 6-feet. Work will take place Monday through Friday, 7:00am to 4:30pm, from 03 September, 2024 through 18 October, 2024. There will be no in-water work or equipment used during this project. Mariners are urged to use caution while transiting the bridge. For further information contact the Coast Guard Bridge Office at (571) 607-5820.

Chart 18685

LNM: 37/24

NORTHERN CALIFORNIA-SAN PABLO BAY-BUOY DEPLOYMENT

US Army Corp of Engineers have deployed 3 meteorological recording stations in the San Pablo Bay area in the following coordinates:

38-04-32N 122-20-41W

38-01-51N 122-18-43W

37-52-39N 122-20-22W

For more details or comments contact Justin Yee at 415-503-6788.

Chart 18654

LNM: 31/23

NORTHERN CALIFORNIA-STEAMBOAT SLOUGH-SUBMERGED VESSEL

The Coast Guard received a report of a submerged 16' vessel north of Steamboat Slough at 38-11-21N 121-39-60W and is not visible from the waterline. There are no salvage plans at this time. Mariners are requested to transit the area with caution. For more details or comments contact USCG Sector San Francisco Waterways at 415-399-7443 or SFWaterways@uscg.mil.

Chart 18661

LNM: 09/24

NORTHERN CALIFORNIA-STOCKTON & TRACY-MARINE CONSTRUCTION

California Department of Water Resources (DWR) has started the in-channel construction and operation of the temporary barriers at Middle River in position 37-53-14N 121-28-56W, Old River in position 37-48-37N 121-32-34W, and Grant Line Canal in position 37-49-12N 121-26-54W. The barriers will be removed from the channels by November 30, 2024. Mariners are requested to transit the area with caution. For more details or comments contact, Karen Tolentino at 916-820-7683 or Karen.Tolentino@water.ca.gov.

Chart 18663

LNM: 26/24

NORTHERN CALIFORNIA-STOCKTON-CONSTRUCTION

Shimmick Construction will be constructing the cellular floodwall between the Smith Canal and the Stockton Deep-Water Shipping Channel of the San Joaquin River in the vicinity of the Port of Stockton. Construction will take place from 1 July, 2024 until 30 November, 2024 and will include dredging, pile driving, and backfilling operations. Nine vessels will be involved during the construction window consisting of 1 derrick barge RINGER #2, 1 Flexfloat crane barge G7718, 1 tugboat 194 Tug, 2 flat deck barges CMC 35, ST. NICHOLAS, and 4 skiff boats for personnel. The PRUDENT MARINER will be monitoring marine traffic through VHF-FM CH-14. Mariners are requested to transit the area with caution. For more details or comments, contact Grant Rose at 559-706-8159.

Chart 18663

LNM: 24/24

NORTHERN CALIFORNIA-STOCKTON-DREDGING OPERATIONS

The Dutra Group will be conducting dredging operations from 1 July, 2024 until 31 October, 2024. at the Port of Stockton 24 hours, 7 days a week at position 37-57-06N 121-19-55W with dredging and disposal operations. Material from the Port of Stockton will be disposed of by offloader at Robers Island at 37-58-26N 121-22-50W. Tow Tug HEIDI BRUSCO, Tender Tug BECK T or PHYLLIS T will be monitoring 13, 14 & 80A. Mariners are requested to transit the area with caution. For more details or comments, contact Dennis Salyers at 415-497-5289.

Charts: 18661 18663

LNM: 23/24

NORTHERN CALIFORNIA-TOMALES POINT-SUBMERGED VESSEL

The U.S. Coast Guard Sector San Francisco received a report of a submerged 14' pleasure craft near Lawson's Landing in approximate position 38-13-21N 122-50-34W. Mariners are requested to transit the area with caution. For more details or comments, contact Sector San Francisco Waterways at SFWATERWAYS@uscg.mil.

Chart 18640

LNM: 21/24

NORTHERN CALIFORNIA-MONTEREY BAY-RESEARCH BUOY DEPLOYMENT

Kinnetic Environmental has deployed two research buoys in Monterey Bay from 28 August through 15 October 2024, in the following positions:

36-53-20N 121-55-30W

36-42-40N 121-54-40W

RV SHANA RAE will be doing both the deployment and retrieval and will be monitoring VHF-FM 9 and 16. Both buoys are 4' tall white cans with 2 reflective horizontal orange stripes and an orange diamond in the middle with "Warning" in the center, and are lit with a yellow light, FIY4s. For further comments or details contact Greg Cotton at 831-239-6192.

Chart 18680

LNM: 36/24

NOTHERN CALIFORNIA-PILLAR POINT-BUOY DEPLOYMENT

Sofar Ocean has deployed a research buoy approximately 1.4nm West of Pillar Point CA, in position 37-30-00.90N 122-31-57.68W. The buoy is a 15" diameter yellow sphere with a yellow light flashing every 2.5 seconds, Fl Y2.5s. For further comments or details contact Ciara Dorsay at 941-961-8543.

Chart 18680

LNM: 50/23

NOTHERN CALIFORNIA-TRINIDAD-BUOY DEPLOYMENT

AXYS Technologies Inc. has deployed a research buoy approximately 24NM West of Trinidad CA, in position 41-05-47.4N 124-41-17.2W. The buoy is a 12' tall yellow buoy with an amber light flashing every 4 seconds, Fl Y4s. Mariners are requested to transit the area with caution. For further comments or details contact Max Bottoni at 250-217-4087.

Chart 18600

LNM: 19/24

SOUTHERN CALIFORNIA – MARINA DEL REY AND SANTA MONICA BAY - WATERWAYS ANALYSIS AND MANAGEMENT SYSTEM (WAMS) STUDY

The Coast Guard is conducting a Waterways Analysis and Management System (WAMS) study of Marina Del Rey and Santa Monica Bay until 21 November, 2024. The study focuses on the area's aids to navigation system, waterborne commerce, marine casualty information, port/harbor resources, emergency response plans, routine and emergency communication capabilities, and future development projects. Furthermore, this study seeks to obtain data on the effectiveness of the system of Aids to Navigation, as well as other waterway safety concerns. Any interested company or individual wishing to provide comments or participate in a user survey may do so via link at: <https://www.research.net/r/TYQVBZ9> or contact LTJG Rubymar Sebastian at Rubymar.sebastianechevarria@uscg.mil or via phone at (571)-613-2930.

Chart 18744

LNM: 36/24

SOUTHERN CALIFORNIA – OCEANSIDE AND DEL MAR BOAT BASIN - WATERWAYS ANALYSIS AND MANAGEMENT SYSTEM (WAMS) STUDY

The Coast Guard is conducting a Waterways Analysis and Management System (WAMS) study of Oceanside and Del Mar Boat Basin until 21 November, 2024. The study focuses on the area's aids to navigation system, waterborne commerce, marine casualty information, port/harbor resources, emergency response plans, routine and emergency communication capabilities, and future development projects. Furthermore, this study seeks to obtain data on the effectiveness of the system of Aids to Navigation, as well as other waterway safety concerns. Any interested company or individual wishing to provide comments or participate in a user survey may do so via link at: <https://www.research.net/r/QJSPZ78> or contact LTJG Rubymar Sebastian at Rubymar.sebastianechevarria@uscg.mil or via phone at (571)-613-2930.

Chart 18758

LNM: 36/24

SOUTHERN CALIFORNIA – SAN MATEO POINT-SAN MATEO POINT LIGHT DISESTABLISHMENT

The U.S. Coast Guard has disestablished the San Mateo Point Light (LLNR 80). Direct any questions, comments, or concerns to SMB-D11ALAMEDA-SignalManagement@uscg.mil.

Charts: 501 18020 18022 18740 18774

LNM: 25/24

SOUTHERN CALIFORNIA- OFFSHORE CATALINA ISLAND- AUTONOMOUS UNDERWATER VEHICLE OPERATIONS

Boeing will be conducting autonomous underwater vehicle operations from 22 January through 30 January 2024.

OPAREA 1:

- 33-42-25N 118-19-55W
- 33-39-47N 118-21-36W
- 33-41-13N 118-24-40W
- 33-43-48N 118-22-48W

OPAREA3:

- 33-26-34N 118-26-55W
- 33-25-33N 118-23-59W
- 33-25-36N 118-21-19W
- 33-29-15N 118-18-36W
- 33-31-35N 118-23-31W
- 33-28-11N 118-26-55W

M/V AMERICAN ISLANDER will be monitoring VHF-FM Chan. 13, 14 & 16. Mariners are requested to transit the area with caution. For more details or comments, contact Sector Los Angeles/ Long Beach at 310-521-3860.

Chart 18740

LNM: 03/24

SOUTHERN CALIFORNIA-ANAHEIM BAY-BRIDGE

ADMIRALTY DRIVE BRIDGE- The City of Huntington Beach will be conducting in-water work during bridge rehabilitation starting 1 July, 2024. The use of scaffolding, and floating work platforms moored at piers, will reduce the vertical clearance by 4ft and limit the horizontal clearance to 37ft. Mariners are requested to transit the area with caution. For more information, contact the Coast Guard Bridge at 510-437-3461 or by email at D11Bridges@uscg.mil.

Chart 18749

LNM: 31/24

SOUTHERN CALIFORNIA-DANA POINT-AUV OPERATIONS

Anduril Industries will be conducting Autonomous Underwater Vehicle (AUV) operations from 26 August, 2024 until 31 December, 2024 in the vicinity of Dana Point. The M/V Pacific Alliance will be conducting in operations bounded by the following coordinates:

- 33-25-59N 117-39-57W
- 33-17-33N 117-50-23W
- 33-12-16N 117-41-44W
- 33-22-36N 117-39-57W
- 33-24-21N 117-38-01W

M/V PACIFIC ALLIANCE will be monitoring VHF-FM Chan. 16. Mariners are requested to transit the area with caution. For more details or comments contact Cam Green at 1-949-512-1312.

Chart 18740

LNM: 31/24

SOUTHERN CALIFORNIA-EL SEGUNDO-BUOY REPLACEMENT

Chevron has replaced a weather buoy in position 33-54-30N 118-27-09W with a similar yellow buoy with characteristics of a flashing yellow light every 3 seconds. Mariners are requested to transit the area with caution. For more details or comments contact Chevron at 310-615-5735 or csesmstmm@chevron.com.

Chart 18744

LNM: 17/23

SOUTHERN CALIFORNIA-LONG BEACH- HYDROGRAPHIC SURVEY

eTrac Inc. will be conducting hydrographic survey operations in the Port of Long Beach from 30 September, 2024 until 04 October, 2024. The survey vessel TIKAANI is approximately 24 feet in length, with a marine surveyor/technician/environmental monitor, and a vessel mounted 3D multi-beam sonar system, and commercial grade differential GPS with sub-meter accuracy or better. A 200m safety zone will be observed for marine wildlife and pinnipeds. Mariners are requested to transit the area with caution. For more details or comments contact Danielle Haverson at 425-358-0267.

Charts: 18700 18720

LNM: 36/24

SOUTHERN CALIFORNIA-LONG BEACH-MARINE CONSTRUCTION

Environmental Construction, Inc. will be conducting marine construction from 13 May, 2024 until 30 September, 2024 at the Alamitos Bay Pump Station in Long Beach at 33-45-10N 118-07-44W. Mariners are requested to transit the area with caution. For more details or comments contact Jacob Hanson at 916-740-9346.

Chart 18746

LNM: 17/24

SOUTHERN CALIFORNIA-LOS ANGELES-MARINE CONSTRUCTION

The Reyes/Larison Joint Venture (RLJV) will be conducting marine construction from 28 December, 2023 until 3 January, 2025 at The Port of Los Angeles Berths 168, 176-182 at 33-45-38N 118-15-40W. T/B PATCONA II/LARCONA, T/B DURANGO, DB VENTURA, DB LONG BEACH, DB LOS ANGELES, work skiffs and work barges will be monitoring VHF-FM Chan. 13 & 65. Mariners are requested to transit the area with caution. For more details or comments, contact Alex Lopez 909-270-6343.

Charts: 18746 18749

LNM: 14/24

SOUTHERN CALIFORNIA-LOS ANGELES/LONG BEACH HARBOR-BRIDGE

VINCENT THOMAS BRIDGE-A 180 ft temporary maintenance platform continues to move west from the east tower. The platform reduces vertical clearance of the bridge by 5.5 ft. It is anticipated the temporary platform will arrive at the east edge of the shipping channel in summer of 2024. The upstream and downstream corners and every 50' along the upstream and downstream side of the platform is lighted at night with steady burning red lights (see V_Thomas_Platform_Lighting1.pdf at the end of this notice). Work will take place during daylight hours, Monday through Friday. For conditions at the bridge mariners can contact 213-479-4138, 213-479-1144 or 310-261-9552. For more details or comments contact the Coast Guard Bridge Office at 510-437-3516.

Chart 18749

LNM: 30/22

SOUTHERN CALIFORNIA-MORRO BAY-WIND ENERGY PROJECT

Equinor Wind US LLC, leaseholder for the Bureau of Ocean Energy Management Lease Area OCS-P 0563, has developed a Fisheries Communication Plan (FCP) which is available for public comment. The FCP overviews the plan for engagement with the region's fishing community during development of the Equinor California Offshore Wind Project. The FCP is available at www.equinorcalifornia.com. Comments on the plan, and any questions about the project, can be sent to Elizabeth Marchetti at emarc@equinor.com or 401-954-2902.

Chart 18700

LNM: 46/23

SOUTHERN CALIFORNIA-MORRO BAY-WIND ENERGY PROJECT

The Morro Bay Wind Energy Area includes the Even Keel Wind Project as one of the three leaseholders. EKW is providing their Final Fisheries Communication Plan that can be accessed at Even Keel Wind Project website <https://evenkeelwind.invenenergy.com/documents> this Plan is a living document that will continue to be updated as needed. Please provide any feedback on this plan via email to Laura.Casali@stantec.com.

Chart 18700

LNM: 44/23

SOUTHERN CALIFORNIA-NEWPORT HARBOR-DIVE OPERATIONS

The City of Newport Beach Harbor Department will be conducting dive operations on 21 September, 2024 from 8:30am until 11:30am and will temporarily close the channel bounded by the H and J mooring fields and Marina Park between 19th Street and 15th Street to support a dive operation at 33-36-33N 117-55-24W. Divers will enter the water from the beach at Marina Park, transit the channel, and remove debris from within the H and J mooring fields. This operation is taking place in conjunction with California Coastal Cleanup Day. The closure will be marked by Harbor Department patrol vessels at both channel ends. The Harbor Department will be monitoring VHF-FM Chan. 16. Mariners are requested to transit the area with caution. For more details or comments, contact Paul Blank at 949-270-8159.

Chart 18746

LNM: 32/24

SOUTHERN CALIFORNIA-OCEANSIDE-SECURED PIER LIGHT

Oceanside Pier Light has been secured after pier fire in Oceanside at 33-11-30N 117-23-20W. Mariners are requested to transit the area with caution. For more details contact Sector San Diego at 619-278-7033.

Chart 18740

LNM: 28/24

SOUTHERN CALIFORNIA-OFFSHORE CALIFORNIA-HAZARDOUS OPERATIONS

Hazardous operations will be conducted for Starlink g9-17 from 7:20am on 18 September, 2024 until 7:52am on 24 September, 2024. Hazardous operation areas are bounded by the following coordinates:

- Hazard Area A:
- 34-40-00N 120-38-00W
- 34-40-00N 120-27-00W
- 34-27-00N 120-16-00W
- 32-57-00N 119-05-00W
- 32-54-00N 119-09-00W
- 34-24-00N 120-31-00W
- 34-36-00N 120-40-00W

SOUTHERN CALIFORNIA-OFFSHORE CALIFORNIA-HAZARDOUS OPERATIONS

34-40-00N 120-38-00W (CLOSING THE FIRST POINT)

Mariners are advised to remain clear of these areas for the duration of operations. For more details or comments contact Space X at regulatory@spacex.com or on VHF-FM Chan. 05, 06 or 16.

Charts: 18600 18620 18640 18680 18700 18720 18740

LNM: 38/24

SOUTHERN CALIFORNIA-OFFSHORE MORRO BAY-FISHERIES COMMUNICATION PLAN AVAILABLE

Golden State Wind LLC, leaseholder for the Bureau of Ocean Energy Management Lease Area OCS-P 0564, has developed a Fisheries Communication Plan (FCP) which is available for public comment. The FCP overviews the plan for engagement with the region’s fishing community during development of the Golden State Wind Project. The FCP is available at https://www.goldenstatewind.com/wp-content/uploads/2023/09/GSW_Fisheries-Comms-Plan_2023.08.23_clean_508-compressed.pdf Comments on the plan, and any questions about the project, can be sent to Rachel Mahler at rachel.mahler@oceanwinds.com or 805-680-8138.

Chart 18703

LNM: 45/23

SOUTHERN CALIFORNIA-OFFSHORE SAN DIEGO -AUTONOMOUS UNMANNED MARITIME VEHICLE OPERATIONS

Liquid Robotics (www.liquid-robotics.com) will be conducting continuous autonomous, unmanned maritime vehicle operations from 16 August, 2024 through 31 January, 2025. Operations will be bounded by the following coordinates:

34-01-18N 121-11-09W

34-01-18N 119-10-41W

32-56-25N 119-10-25W

32-56-26N 119-11-26W

Operations consist of marine data collection. Wave Gliders carry no fuel, lubricants, or hydrocarbons, are wave powered, remotely attended from our Wave Glider Operations Center (WGOC), moving at speeds of typically 1kt, and will give way if encountered by a vessel. They are surfboard-size, black in color, with a contact plaque and mast extending 1 meter above the surface supporting a flag and topped with a solid white light for use at night. Mariners are urged to transit the area with caution. For more details or comments contact, Liquid Robotics Operations Center at 408-636-4205 or support@liquid-robotics.com.

Charts: 18720 18740

LNM: 34/24

SOUTHERN CALIFORNIA-OFFSHORE SOUTHERN CALIFORNIA-SURVEY OPERATIONS

Global Marine Group will be conducting survey operations on the Jupiter submarine fibre optic telecommunications cable from 24 August, 2024 until 15 October, 2024 at 33-52-16N 118-25-03W and 33-02-43N 120-25-29W. The repair vessel CABLE INNOVATOR is due to arrive on site 24 August, 2024 to commence the survey. M/V CABLE INNOVATOR will be limited in their maneuverability during operations and will be monitoring VHF-FM Chan. 16. Mariners are requested to maintain a distance of at least 1NM from the cable ship during operations, and 1/4NM from any cable buoys in place during the course of the survey for safety and transit the area with caution. For more details or comments, contact Daniella Reeve at + 44 1245 904 185 or daniella.reeve@globalmarine.group.

Chart 18740

LNM: 31/24

SOUTHERN CALIFORNIA-OFFSHORE-HAZARDOUS OPERATIONS

There will be hazardous operations conducted in the Fleet Training Area Hot (FLETA HOT) until 1 January, 2025. Mariners are requested to transit the area with caution. For more details or comments contact Henry Rogel at 619-545-1757

A. HAZARDOUS OPERATIONS REQUEST (FLETA HOT):

(1) IN AREA BOUNDED BY:

32-33-00N 118-25-00W

32-35-00N 118-16-00W

32-35-00N 117-40-00W

31-55-00N 117-40-00W

31-55-00N 118-25-00W

32-33-00N 118-25-00W

TO POINT OF ORIGIN.

B. HAZARDOUS OPERATIONS REQUEST (SOAR):

(1) IN AREA BOUNDED BY:

32-52-42N 119-11-58W

33-08-04N 118-52-05W

33-08-04N 118-46-02W

33-03-52N 118-41-48W

33-02-32N 118-43-33W

32-58-53N 118-43-31W

32-47-40N 118-32-21W

32-36-55N 118-45-00W

32-36-55N 118-56-57W

TO POINT OF ORIGIN.

C. HAZARDOUS OPS REQUEST (SHOBA WITH BOTH EXTENSIONS):

(1) AREA BOUNDED BY FOLLOWING COORDS:

32-55-00 N 118-25-00 W

32-55-00 N 118-15-00 W

32-40-00 N 118-15-00 W

32-40-00 N 118-35-00 W

32-45-00 N 118-35-00 W

TO POINT OF ORIGIN.

D. HAZARDOUS OPERATIONS REQUEST (MOORED BUOYS IN PYRAMID COVE)

(1) IN AREA BOUNDED BY:

ANCHOR 1: 15FT, 32-47-38N 118-25-49W

ANCHOR 2: 15FT, 32-47-24N 118-25-12W

ANCHOR 3: 20FT, 32-47-36N 118-24-53W

SOUTHERN CALIFORNIA-OFFSHORE-HAZARDOUS OPERATIONS

- ANCHOR 4: 20FT, 32-47-11N 118-25-26W
- ANCHOR 5: 25FT, 32-47-19N 118-25-00W
- ANCHOR 6: 30FT, 32-47-07N 118-24-51W
- ANCHOR 7: 210FT, 32-47-24N 118-24-27W
- ANCHOR 8: 170FT, 32-47-24N 118-25-59W
- ANCHOR 9: 243FT, 32-47-19N 118-24-27W
- ANCHOR 10: 227FT, 32-47-19N 118-25-59W
- ANCHOR 11: 00FT, 32-47-45N 118-24-18W
- ANCHOR 12: 00FT, 32-46-56N 118-24-18W
- ANCHOR 13: 00FT, 32-46-56N 118-26-13W
- ANCHOR 14: 00FT, 32-47-45N 118-26-13W.

Charts: 18700 18720 18740

LMN: 01/24

SOUTHERN CALIFORNIA-OFFSHORE-HAZARDOUS OPERATIONS LIVE FIRE

There will be hazardous operations conducted in the Fleet Training Areas (FLETA HOT, SOAR, and SHOBA WITH BOTH EXTENSIONS) until 1 January, 2025. Mariners are requested to stay clear of these areas. The hazardous operations include live fire. For more details or comments contact Darrel Rumsey at 619-545-1744 or Henry Rogel at 619-545-1757.

A. HAZARDOUS OPERATIONS REQUEST (FLETA HOT FOR LIVE FIRE):

- (1) IN AREA BOUNDED BY:
 - 32-33-00N 118-25-00W
 - 32-35-00N 118-16-00W
 - 32-35-00N 117-4-000W
 - 31-55-00N 117-40-00W
 - 31-55-00N 118-25-00W
 - 32-33-00N 118-25-00W (TO POINT OF ORIGIN).

B. HAZARDOUS OPERATIONS REQUEST (SOAR FOR LIVE FIRE)

- (1) IN AREA BOUNDED BY:
 - 32-52-42N 119-11-58W
 - 33-08-04N 118-52-05W
 - 33-08-04N 118-46-02W
 - 33-03-52N 118-41-48W
 - 33-02-32N 118-43-33W
 - 32-58-53N 118-43-31W
 - 32-47-40N 118-32-21W
 - 32-36-55N 118-45-00W
 - 32-36-55N 118-56-57W (TO POINT OF ORIGIN).

C. HAZARDOUS OPS REQUEST (SHOBA WITH BOTH EXTENSIONS FOR LIVE FIRE):

- (1) AREA BOUNDED BY FOLLOWING COORDS:
 - 32-55-00N 118-25-00W
 - 32-55-00N 118-15-00W
 - 32-40-00N 118-15-00W
 - 32-40-00N 118-35-00W
 - 32-45-00N 118-35-00W (TO POINT OF ORIGIN).

D. HAZARDOUS OPS REQUEST (PYRAMID COVE FOR MOORED BUOYS)

- (1) AREA BOUNDED BY FOLLOWING COORDS:

- | DEPTH | LAT | LONG |
|-------------------|-----------|------------|
| ANCHOR 1: 15FT- | 32-47-38N | 118-25-49W |
| ANCHOR 2: 15FT- | 32-47-24N | 118-25-12W |
| ANCHOR 3: 20FT- | 32-47-36N | 118-24-53W |
| ANCHOR 4: 20FT- | 32-47-11N | 118-25-26W |
| ANCHOR 5: 25FT- | 32-47-19N | 118-25-00W |
| ANCHOR 6: 30FT- | 32-47-07N | 118-24-51W |
| ANCHOR 7: 210FT- | 32-47-24N | 118-24-27W |
| ANCHOR 8: 170FT- | 32-47-24N | 118-25-59W |
| ANCHOR 9: 243FT- | 32-47-19N | 118-24-27W |
| ANCHOR 10: 227FT- | 32-47-19N | 118-25-59W |
| ANCHOR 11: 00FT- | 32-47-45N | 118-24-18W |
| ANCHOR 12: 00FT- | 32-46-56N | 118-24-18W |
| ANCHOR 13: 00FT- | 32-46-56N | 118-26-13W |
| ANCHOR 14: 00FT- | 32-47-45N | 118-26-13W |

Charts: 18020 18720 18740

LMN: 05/24

SOUTHERN CALIFORNIA-OFFSHORE-SURVEY OPERATIONS

Atlas Wind will be conducting geophysical and geotechnical surveys until 01 December, 2024, offshore of the Morro Bay Area and within the Equinor Offshore Wind Lease Area (OCS-P 0563). Operations will be bounded by the following coordinates or see enclosure ATLAS-SURVEY OPERATIONS.pdf below:

- 35-47-56N 122-09-23W
- 35-07-05N 121-39-32W
- 35-06-45N 120-37-53W
- 35-33-17N 121-07-01W
- 35-33-13N 121-32-11W
- 35-47-56N 122-09-23W

Surveys will occur within the Lease Area and along areas inshore of the Lease within potential submarine export cable sitting corridors. These potential submarine export cable sitting corridors will be narrow areas that are up to 6,562 feet (2,000 meters) wide and will connect the Lease Area and potential cable landfall locations. During the survey the M/V Island Pride and R/V Taku will be deploying subsurface survey equipment along

SOUTHERN CALIFORNIA-OFFSHORE-SURVEY OPERATIONS

the route corridor and in the Lease Area (OCS-P 0563) and will be restricted in their ability to maneuver. M/V ISLAND PRIDE and R/V TAKU will be monitoring VHF-FM Chan. 16. Mariners are requested to transit the area with caution. For more details or comments contact Matthew Moulton at 1-805-236-0756.

Charts: 18700 18720 18740

LNM: 15/24

SOUTHERN CALIFORNIA-POINT CONCEPTION-NOAA BUOY DEPLOYMENT

NOAA's Pacific Marine Environmental Laboratory deployed a buoy due west of Point Conception, CA near the Harvest rig at 34-27-83N 120-41-82W. The buoy has a height of 4' and diameter of 6', a yellow top with gray sides and a flashing amber light every 4 seconds and will be recovered May 2025. Mariners are advised to use due caution when transiting this area. For more details or comments contact Nicholas Delich at 206-552-6065.

Chart 18720

LNM: 21/24

SOUTHERN CALIFORNIA-POINT LOMA-MARINE CONSTRUCTION

R.E. Staite Engineering, Inc. will be conducting marine construction from 26 February, 2024 until 30 September, 2024 at Naval Base Point Loma at 32-42-12N 117-14-05W. A Floating Crane Barge, Push Boat JEANIE R, Work Boat JOHN DRAKE and skiffs will be monitoring VHF-FM Chan. 16. Mariners are requested to transit the area with caution. For more details or comments contact R.E. Staite Engineering, Inc. at 619-629-9733 or restaite@restaite.net.

Chart 18773

LNM: 07/24

SOUTHERN CALIFORNIA-SAN DIEGO BAY-BRIDGE

CORONADO BAY BRIDGE MAINTENANCE-Scaffolding installed between piers 11-12, 12-13, and 13-14, reduces vertical clearance by no more than 8'. The upstream and downstream lower edges of the scaffolding are lighted at night with red lights. For more details or comments contact the Coast Guard Bridge Office at 510-437-3461.

Charts: 18772 18773

LNM: 13/20

SOUTHERN CALIFORNIA-SAN DIEGO BAY-CONSTRUCTION PROJECT

Marathon Construction Corporation will be conducting marine construction on damaged pilings, replacing floating docks and gangways, conducting dive operations, and installing electrical and mechanical utilities from 22 February, 2024 until 31 January, 2025 at Naval Amphibious Base Coronado, Piers 3, 17 and 21 at 32-40-50N 117-09-27W. Work will be performed mostly from a 60' X 120' crane barge, skiffs, and floating docks and will be monitoring VHF-FM Chan. 16. Mariners are requested to transit the area with caution. For more information or comments contact Timothy Meyer at 619-843-8975.

Charts: 18741 18765 18773

LNM: 07/24

SOUTHERN CALIFORNIA-SAN DIEGO BAY-MARINE CONSTRUCTION

R.E. Staite Engineering, Inc. will be conducting marine construction from 1 April, 2024 until 25 June, 2025 at the Drydock and adjacent area in San Diego Bay at the NASSCO waterfront facility 32-41-15N 117-08-24W. Vessels DB POINT LOMA, DB WILLIAM F, DB PALOMAR, RES 180, SCOW HAROLD M, SCOW CLARENCE D, SCOW ROB P, SCOW MIKE J, P/B JEANIE R, C/B JOHN DRAKE, RES SURVEY BOAT, TUG CUYAMACA, and various barges (80', 110' and 120') will be performing dredging and construction operations and will be monitoring VHF-FM Chan. 16. Mariners are requested to transit the area with caution. For more details or comments contact R.E. Staite Engineering at 619-233-0175.

Chart 18773

LNM: 12/24

SOUTHERN CALIFORNIA-SAN DIEGO BAY-MARINE CONSTRUCTION

Marathon Construction will be conducting marine construction at Naval Base Coronado from 4 January, 2024 until 31 March 2025 at 32-41-43N 117-13-51W. Mariners are requested to transit the area with caution. For more details or comments contact Dane Kost at 619-244-5522.

Chart 18765

LNM: 51/23

SOUTHERN CALIFORNIA-SAN DIEGO BAY-MARINE CONSTRUCTION

R.E. Staite Engineering, Inc. will be conducting marine construction from 1 April, 2024 until 31 December, 2024 at BAE Systems San Diego facility, Pier 1, Pier 3 and Building 13 Wharf at 32-41-24N 117-08-41W. Vessel Spud Crane Barge RES 150, P/B JEANIE R, support barges, and skiffs will be monitoring VHF-FM Chan. 16. Mariners are requested to transit the area with caution. For more details or comments contact R.E. Staite Engineering, Inc. at 619-538-2761 or restaite@restaite.net.

Chart 18773

LNM: 09/24

SOUTHERN CALIFORNIA-SAN DIEGO BAY-MARINE EVENT

The Cortez Racing Association (CRA) will sponsor the CRA Beer Can Series Regatta every Wednesday from 4:00pm to 8:00pm from 11 May, 2024 and re-occurring until 31 July, 2024. The regatta will consist of 125 sailboats participating in a regatta in North San Diego Bay, CA. The regatta will race a course in San Diego Bay, starting and finishing at Harbor Island. Mariners are requested to transit the area with caution. For more details or comments, contact Colleen Cooke-Salas at 619-852-5010.

Chart 18765

LNM: 19/24

SOUTHERN CALIFORNIA-SAN DIEGO BAY-MARINE EVENT

The San Diego Yacht Club will be sponsoring the High School Match Race Qualifier on 28 to 29 September, 2024 from 11:00am to 5:00pm each day. The event will involve 12 sailing vessels racing on a course in the vicinity of Harbor Island in San Diego Bay, centered at approximately 32 43.0N/117 10.8W. Mariners are advised to use due caution when transiting the area during the event. For more details or comments, contact Jeff Johnson at 619-933-9922.

Chart 18773

LNM: 37/24

SOUTHERN CALIFORNIA-SAN DIEGO-CONSTRUCTION OPERATIONS

The R.E. Staite Engineering, Inc. will be conducting in-water construction work associated with this contract will commence on 30 August, 2024 through 30 September, 2024. This project is located at Pier 40 within Naval Base Point Loma (NBPL), in San Diego County, California, 32-37-31N and 117-14-19 W, San Diego Bay. Work includes removing from NBPL the existing, deteriorated floating docks, jib crane and lighting at Pier 40. The DB Palomar and Push Boat JEANIE R will be performing construction work at Pier 40. All equipment will monitor radio Channel 16. Mariners are urged to transit at their slowest safe speed to minimize wake and proceed with caution after passing arrangements have been made. This work is being

SOUTHERN CALIFORNIA-SAN DIEGO-CONSTRUCTION OPERATIONS

performed under contract with Naval Base Pt. Loma (Contact: Danielle Goossens, Construction Manager -619-221-7236), and General Contractor R.E. Staite Engineering (Contact:Tory Wagoner, QC Manager 619-629-9733)

Chart 18773

LNM: 36/24

SOUTHERN CALIFORNIA-SAN DIEGO-DREDGING OPERATIONS

Manson Construction Co. will be conducting dredging operations from 23 May, 2024 until 1 January, 2025 from 6:00pm until 6:00am Monday through Saturday at the Mole Pier Naval Base San Diego at 32-40-04N 117-07-16W. D/B NJORD, T/B JEFFERY M, S/B WAHOO, GULFPORT, ROCKPORT, EASTPORT, and MANSON 63 will be monitoring VHF-FM Chan. 13 & 16. Mariners are requested to transit the area with caution. For more details or comments contact Tim O'Neill at 562-762-5390.

Chart 18741

LNM: 19/24

SOUTHERN CALIFORNIA-SAN DIEGO-FLOATING CYLINDER

Sector San Diego received a report of a large metal cylinder floating in position 32-38-34N 117-09-09W on 22 April, 2024. The cylinder is approximately 15 feet in length, 5 feet in diameter and floating 5 feet above the waterline. Mariners are requested to transit the area with caution. For more details or comments contact Sector San Diego at 619-278-7033.

Chart 18765

LNM: 18/24

SOUTHERN CALIFORNIA-SAN DIEGO-MARINE CONSTRUCTION

R.E. Staite Engineering Inc. will be conducting marine construction for the repair and replacement of the existing Pier 302 at Naval Base Pt. Loma from 2 January, 2024 until 2 January, 2025 at 32-42-08N 117-14-09W. DB WILLIAM F, PB JEANIE R, PB JOHN DRAKE, RES 180 Barge, spud/crane barge and support barge RES 110 will be monitoring VHF-FM Chan. 16. Mariners are requested to transit at their slowest safe speed to minimize wake transit the area with caution. For more details or comments contact Tory Wagoner at 619-629-9733 or restaite@restaite.net.

Chart 18773

LNM: 50/23

SOUTHERN CALIFORNIA-SAN DIEGO-MARINE EVENT

The San Diego Yacht Club will be sponsoring the One Design Weekend Monthly Series in Coronado Roads, CA. 25 sailing vessels will be racing on courses starting at approximately 32-38-41N 117-11-35W with courses oriented 1.5 nautical miles into the wind direction. Races will be held on 10-11 August, 28-29 September, 12-13 October, 16-17 November, and 15 December, 2024, from 11:00am to 4:00pm each day. Mariners are requested to transit the area with caution. For more details or comments, contact Jeff Johnson at 619-933-9922.

Chart 18773

LNM: 48/23

SOUTHERN CALIFORNIA-SAN DIEGO-MARINE EVENT

The San Diego Yacht Club will be sponsoring the Finn Pacific Coast Championship on 21-22 September, 2024 from 11:00am to 4:30pm each day. The event will involve 20 sailing vessels racing on a course in Coronado Roads, centered at approximately 32 39.5N/117 11.7W. Mariners are advised to use due caution when transiting the area during the event. For more details or comments, contact Jeff Johnson at 619-933-9922.

Chart 18773

LNM: 37/24

SOUTHERN CALIFORNIA-SAN DIEGO-OCEANOGRAPHIC BUOY DEPLOYMENT

The City of San Diego Marine Biology Lab is conducting year-round monitoring with oceanographic buoys in the vicinity of the South Bay Ocean Outfall and Point Loma Ocean Outfall until December, 2024. Surface buoys are yellow and lighted equipped with AIS and run from ocean surface to ocean bottom. The Ocean Monitoring Program has two oceanographic moorings deployed at 32-40-12N 117-19-29W and 32-31-55N 117-11-13W. The M/V OCEANUS AND M/V MONITOR III when in the area will monitor VHF-FM Chan. 16. Mariners are requested to transit the area with caution. For more details or comments contact Adriano Feit at 619-758-2377 or 858-882-7055.

Charts: 18765 18772

LNM: 01/24

SOUTHERN CALIFORNIA-SAN DIEGO-OCEANOGRAPHIC SURVEY

The City of San Diego Marine Biology Lab is conducting year-round ocean monitoring sampling in the vicinity of the South Bay Ocean Outfall and Point Loma Ocean Outfall until 15 November, 2024. The Ocean Monitoring Program conducts trawl sampling, benthic sampling with a double Van Veen sediment grab, vertical CTD casts and horizontal tows with an undulating underwater vehicle, ROV surveys and multiple moorings are deployed in the region below. Ocean sampling will be conducted in an area bound by the following coordinates:

- 32-31-54N 117-11-11W
- 32-32-10N 117-11-57W
- 32-32-03N 117-12-06W
- 32-32-33N 117-11-56W
- 32-40-10N 117-19-22W
- 32-40-04N 117-19-34W
- 32-39-37N 117-19-32W
- 32-39-56N 117-19-39W
- 32-40-10N 117-16-55W

The M/V OCEANUS AND M/V MONITOR III when in the area will monitor VHF-FM Chan. 16. Mariners are requested to transit the area with caution. For more details or comments contact Adriano Feit at 619-758-2377 or 858-882-7055.

Charts: 18765 18772

LNM: 47/23

SOUTHERN CALIFORNIA-SAN DIEGO-SAN DIEGO BAY-VESSEL LAUNCH SAFETY ZONE

General Dynamics NASSCO will be conducting a vessel launch of the USNS LUCY STONE (T-AO 209) on 21 September, 2024, from 1100 to 1230. The limits of the safety zone include all navigable water including the maritime navigational channel south of the Coronado Bay Bridge encompassing the following coordinates:

- 32-41-21N 117-08-38W
- 32-41-15N 117-09-01W
- 32-41-01N 117-08-45W
- 32-41-20N 117-08-21W

Mariners will be prohibited from transiting through the safety zone during this period. Mariners are requested to transit the surrounding area with caution. VHF Channel 77 will be monitored during the evolution. For more details or comments, contact Mr. Ethan Van Antwerp at

SOUTHERN CALIFORNIA-SAN DIEGO-SAN DIEGO BAY-VESSEL LAUNCH SAFETY ZONE

Ethan.VanAntwerp@NASSCO.com or 619-455-0735.

Chart 18765

LNM: 37/24

SOUTHERN CALIFORNIA-SAN DIEGO-SUNKEN VESSEL

The Coast Guard has received a report of a partially submerged 35-foot sailing vessel near Zuniga Jetty in position 32-40-38N 117-13-38W. Mariners are requested to transit the area with caution. For more details or comments, contact Coast Guard Sector San Diego at 619-278-7031.

Chart 18773

LNM: 29/24

SOUTHERN CALIFORNIA-SAN DIEGO-ZUNIGA POINT-SUNKEN VESSEL

The Coast Guard has received a report of a sunken 25-foot sailing vessel near Zuniga Point at 32-39-48N 117-11-30W. Mariners are requested to transit the area with caution. For more details or comments, contact Coast Guard Sector San Diego at 619-278-7031.

Chart 18773

LNM: 49/23

SOUTHERN CALIFORNIA-SAN JOSE CREEK-GOLETA SLOUGH-BRIDGE

STATE ROUTE 217 HIGHWAY BRIDGE- Caltrans has resumed in-water construction for the bridge replacement project through 30 November 2024. Due to the use of heavy construction equipment and the presence of a temporary trestle, mariners are requested to transit the area with extreme caution. For more information, contact the Coast Guard Bridge Office at 510-437-3461 or D11Bridges@uscg.mil.

Chart 18720

LNM: 22/24

SOUTHERN CALIFORNIA-SAN NICHOLAS ISLAND-ATMOSPHERIC BUOY DEPLOYMENT

Naval Air Systems Command has deployed an atmospheric sampling buoy 1.5 miles Northeast of San Nicolas Island at 33-18-00N 119-30-55W. The yellow buoy FI Y 3s, is 6 feet above the waterline and 2 feet in diameter. Mariners are requested to transit the area with caution. For more details or comments contact Kyle Edwards at 805-989-0672.

Chart 18720

LNM: 39/22

SOUTHERN CALIFORNIA-SAN NICOLAS ISLAND-COMMERCIAL FISHING OPERATIONS

Ventura County Commercial Fishermen's Association member vessels will be operating within a 35 mile radius of San Nicolas Island between 1 January, 2024 and 31 December, 2024. Vessels can be expected in this area anytime wind and sea state is at a Beauford Scale of 4 or less. Gear will be marked with a flagged highflyer, radar reflector, lights and bouys. Please give a closest point of approach of 1/2 mile. Vessels can be contacted on VHF-FM Chan. 11 and 16. Mariners are requested to transit the area with caution. For more details and comments contact 805-448-4455.

Chart 18022

LNM: 42/23

SOUTHERN CALIFORNIA-SANTA BARBARA CHANNEL-MARINE EVENT

The Friendship paddle will be conducting a marine event with approximately 125 paddle boarders accompanied by 35 support boats will cross the Santa Barbara Channel from the west end of Santa Cruz Island on a northbound heading to Santa Barbara Harbor on 18 September, 2024 from 7:00am until 4:00pm. The paddlers will be traveling at approximately 3 to 4 knots. Support vessels will be monitoring VHF-FM Chan. 16. Mariners are requested to transit the area with caution. For more details or comments, contact Alex Brodie at 805 443-9208.

Chart 18725

LNM: 35/24

SOUTHERN CALIFORNIA-SANTA BARBARA-AQUACULTURE ESTABLISHMENT

Ocean Rainforest will be establishing an Aquafarm, starting on 30 March, 2023 until Decmeber, 2025 located located 4.3 NM South of Santa Barbara. The site is bound within four yellow boundary marker buoys with a flashing yellow light every 2 seconds (FI Y2s) in the following positions:

34-19-58.53N 119-42-45.72W

34-20-10.12N 119-42-45.72W

34-20-11.23N 119-42-07.24W

34-19-59.64N 119-42-07.92W

In line with the outer boundary buoys are small unlit floats that are marking the anchors associated with the Aquaculture area, the total buoys marking the anchors are 12 on the long axis of each side and 2 between the corner buoys on the short axis. Within the boundary markers will be 188 buoys/floats, see Enclosure AQUACULTURE ESTABLISHMENT.pdf enclosure below. The interior buoys of the aquaculture are in the shape of a rectangle with the outer edge marked with yellow buoys, every other buoy has a flashing yellow light flashing every 2 seconds (FI Y2s). Within the rectangle are 135 small unlit floats marking the cultivation lines. Mariners are advised to remain clear of this area as entanglement with associated equipment may occur. Vessel DANNY C will be conducting the deployment and monitoring VHF-FM Chan. 7 and 16. For more details or comments contact Ocean Rainforest Inc at 805-722-9601 or eliza@oceanrainforest.com.

Charts: 18720 18725

LNM: 11/23

SOUTHERN CALIFORNIA-SANTA BARBARA-HAZARDOUS OPERATIONS

Hazardous operations will be conducted from 09-20 September, 2024. USV RANGER and USV MARINER will be conducting fueling at sea and underway replenishment testing at Channel Island/ Santa Barbara 20 mile vicinity of position: 34-15-55N 119-41-01W. Mariners are advised to remain clear of these areas for the duration of operations. For more details or comments contact Bryan Yarde 805-914-3355 or on VHF-FM Chan.16.

Chart 18720

LNM: 37/24

SOUTHERN CALIFORNIA-VENTURA-SURVEY OPERATIONS

The USGS Pacific Coastal and Marine Science Center (PCMSC) will be conducting a geophysical survey from Goleta to Ventura in the vicinity of 34-23-77N 119-59-51W and 34-11-65N 119-20-17W from 16-20 September, 2024. A bathymetric survey using two personal watercraft, The PWC's will conduct cross-shore transects from within the surf zone out to 1200m from shore to document changes in seafloor morphology. Survey speeds are minimal at 5 kts and vessel operators navigate off pre-determined survey lines or terminate lines prematurely to avoid marine life as well as recreational activities such as swimming, surfing, fishing and boating. High-speed, quick turns may be observed and are necessary for the PWC operator to face on-coming waves to safely exit the surf-zone. Mariners are requested to transit the area with caution. For more details or comments contact Tim Elfers at 831-460-7479.

Chart 18725

LNM: 36/24

SOUTHERN CALIFORNIA–SAN DIEGO–MARINE EVENT

The San Diego Yacht Club will be sponsoring the Beneteau Cup on 21-22 September, 2024 from 11:00am to 4:00pm each day. The event will involve 30 sailing vessels racing on a course in Coronado Roads, centered at approximately 32 38.0N/117 10.7W. Mariners are advised to use due caution when transiting the area during the event. For more details or comments, contact Jeff Johnson at 619-933-9922.

Chart 18773

LNM: 37/24

UNITED STATES COAST GUARD-NAVCEN-SURVEY

We are eager to understand the primary reason for your visit to the Navigation Center website and how you use it, whether for recreational boating, professional purposes, data requests, educational reasons, or otherwise. Your feedback on the website's ease of use, ability to find information, and if it's your primary source for navigation-related information is crucial. We are committed to improving your experience and welcome any suggestions to enhance the site's usability, information accessibility, and overall efficiency. Your insights are invaluable in helping us better meet your navigation needs. Navigation Center Website Feedback Survey (surveymonkey.com)

LNM: 15/24

SECTION VIII - LIGHT LIST CORRECTIONS

An Asterisk *, indicates the column in which a correction has been made to new information

(1) No.	(2) Name and Location	(3) Position	(4) Characteristic	(5) Height	(6) Range	(7) Structure	(8) Remarks
------------	--------------------------	-----------------	-----------------------	---------------	--------------	------------------	----------------

None

PUBLICATION CORRECTIONS

None

ENCLOSURES

REPORT OF DELAY AT DRAWBRIDGE

[Delay_Report_11-2017.pdf](#)

Use link above to Report a Delay at a Drawbridge.

LNM: 06/07

NORTHERN CALIFORNIA-SAN FRANCISCO BAY-GALLINAS CREEK-BRIDGE

[GallinasCkFloatBrg_Lighting.pdf](#)

PG&E TEMPORARY FLOATING BRIDGE-See link above for temporary bridge lighting.

LNM: 33/24

NORTHERN CALIFORNIA-DELTA & RIVERS-AMERICAN RIVER-BRIDGE

[AmRiv_SiltCurtain_BargeLocation.pdf](#)

CAPITAL CITY HWY (ROUTE 51) BRIDGE-See link above for barge and silt curtain locations.

LNM: 22/22

NORTHERN CALIFORNIA-SAN FRANCISCO BAY-BRIDGE

[PlatformLighting_GG_Bridge_24Apr24.pdf](#)

GOLDEN GATE BRIDGE-Temporary Platform Location and Lighting revised 24 Apr 24.

LNM: 17/24

NORTHERN CALIFORNIA-DELTA & RIVERS-SACRAMENTO RIVER-BRIDGE

[ButteConstructionLightng-BuoyLine.pdf](#)

REPLACEMENT BUTTE CITY BRIDGE-See link above for temporary construction trestle and lighting and proposed buoy line..

LNM: 36/22

SOUTHERN CALIFORNIA-SANTA BARBARA-AQUACULTURE ESTABLISHMENT

[AQUACULTURE ESTABLISHMENT.png](#)

see link above.

LNM: 03/23

CALIFORNIA - SANTA BARBARA - TRAFFIC SEPARATION (TSS) EXTENDED

[TSS_Circ.78.pdf](#)

See link above.

LNM: 21/23

CALIFORNIA - SANTA BARBARA TSS AND CHANNEL ISLANDS ATBA GRAPHIC

[new-protections.jpg](#)

See link above.

LNM: 21/23

CALIFORNIA-CALIFORNIA COAST-VOLUNTARY VESSEL SPEED REDUCTION

[2024 NOAA USCG EPA VSR Announcement.pdf](#)

See link above.

LNM: 16/24

SOUTHERN CALIFORNIA-OFFSHORE-SURVEY OPERATIONS

[ATLAS-SURVEY OPERATIONS.pdf](#)

see enclosure below.

LNM: 15/24

NORTHERN CALIFORNIA-DELTA & RIVERS-OLD RIVER-BRIDGE

[BNSF_OldRiver_Barge_Lighting01.pdf](#)

See link above for typical barge lighting and location during fender work.

LNM: 13/24

NORTHERN CALIFORNIA-OFFSHORE CAPE MENDOCINO-SURVEY OPERATIONS

[SSaildrone Surveyor SF-MB.pdf](#)

See link above.

LNM: 24/24

SOUTHERN CALIFORNIA-VENTURA-DREDGE AND DIVING OPERATION

[VENTURA-DREDGE-DIVING OPERATION.pdf](#)

See link above

LNM: 21/24

NORTHERN CALIFORNIA-SAN FRANCISCO BAY-BRIDGE

[Temp_Platform_GGB.pdf](#)

GOLDEN GATE BRIDGE-See link above for proposed temporary below deck platform during seismic retrofit project.

LNM: 3824

SOUTHERN CALIFORNIA-PORTS OF LOS ANGELES/LONG BEACH-LA/LB HARBOR-BRIDGE

[V_Thomas_Platform_Lighting1.pdf](#)

See link above for platform lighting for Vincent Thomas Bridge.

LNM: 28/19

THE LOCAL NOTICE TO MARINERS IS AVAILABLE ON THE WORLD WIDE WEB AT [HTTPS://WWW.NAVCEN.USCG.GOV](https://www.navcen.uscg.gov)

R.L. Zamora, CIV
U.S. Coast Guard
Acting Chief Waterways Management Branch

**U.S. COAST GUARD
REPORT OF DELAY AT DRAWBRIDGE
PER 33 CFR 117.5**

BRIDGE NAME: _____ DATE: _____

MILE : _____ WATERWAY: _____

1. Name/ Type of Vessel: _____ Direction of Travel : _____

2. Vessel Owner (Name): _____

(Address): _____

3. Name of Pilot (if applicable): _____

(Address): _____

4. Time vessel signaled for bridge opening: _____

5. Location of vessel when signal was given: _____

6. Time and location of vessel when delay began: _____

7. Method of signal for bridge opening: () Radio () Sound () Visual.

(If sound or visual signal was used, specify: _____)

8. Time bridge operator acknowledged signal: _____

9. Method of bridge operator acknowledgement: () Radio () Sound () Visual

(If sound or visual signal was used, specify: _____)

10. Did bridge operator acknowledgement indicate the bridge,

() Could be opened immediately?

() Could not be opened immediately?

11. If land traffic crossed the bridge:

Time land traffic started across the bridge _____

Time land traffic stopped crossing the bridge _____

Did land traffic stop on the bridge? _____

Duration land traffic stopped on the bridge _____

12. Time drawbridge opened for navigation _____

13. Additional comments:

I certify the above information is true to the best of my knowledge and understand this statement may be used by the U.S. Coast Guard in levying fines against the bridge owner.

Signature _____

Telephone _____

Mariners may complete and return to:

Commander (dpw)
Eleventh Coast Guard District
Coast Guard Island, Building 50-2
Alameda, CA 94501-5100
Attn: Bridge Office

Fax: (510) 437-5836

Email: Carl.T.Hausner@uscg.mil

Questions? Please contact: Carl Hausner, Bridge Administrator, Eleventh Coast Guard District

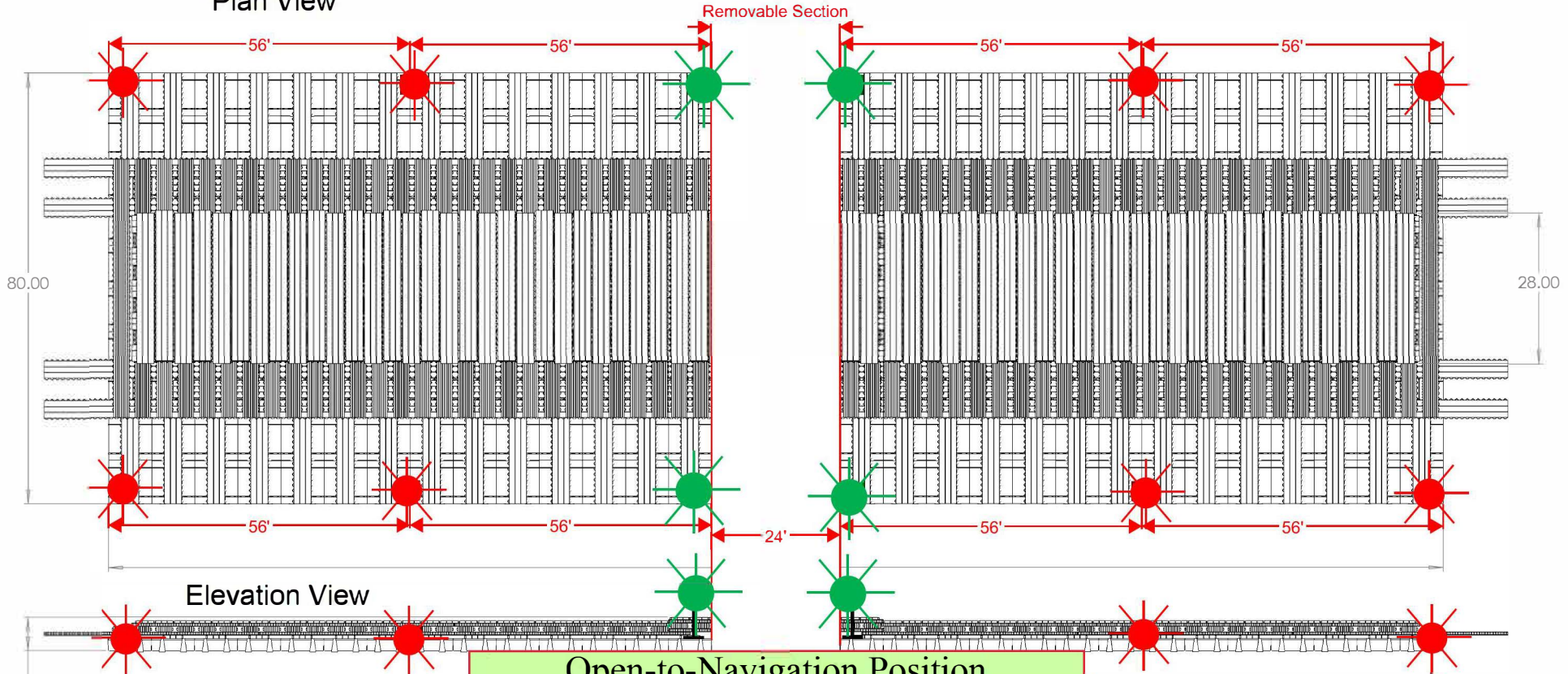
Office: (510) 437-3516

Cell: (510) 219-4366

Mariners are reminded not to require bridge openings for appurtenances nonessential to navigation, per 33 CFR 117.11

Lighting Plan Temporary Floating Bridge Gallinas Creek

Plan View

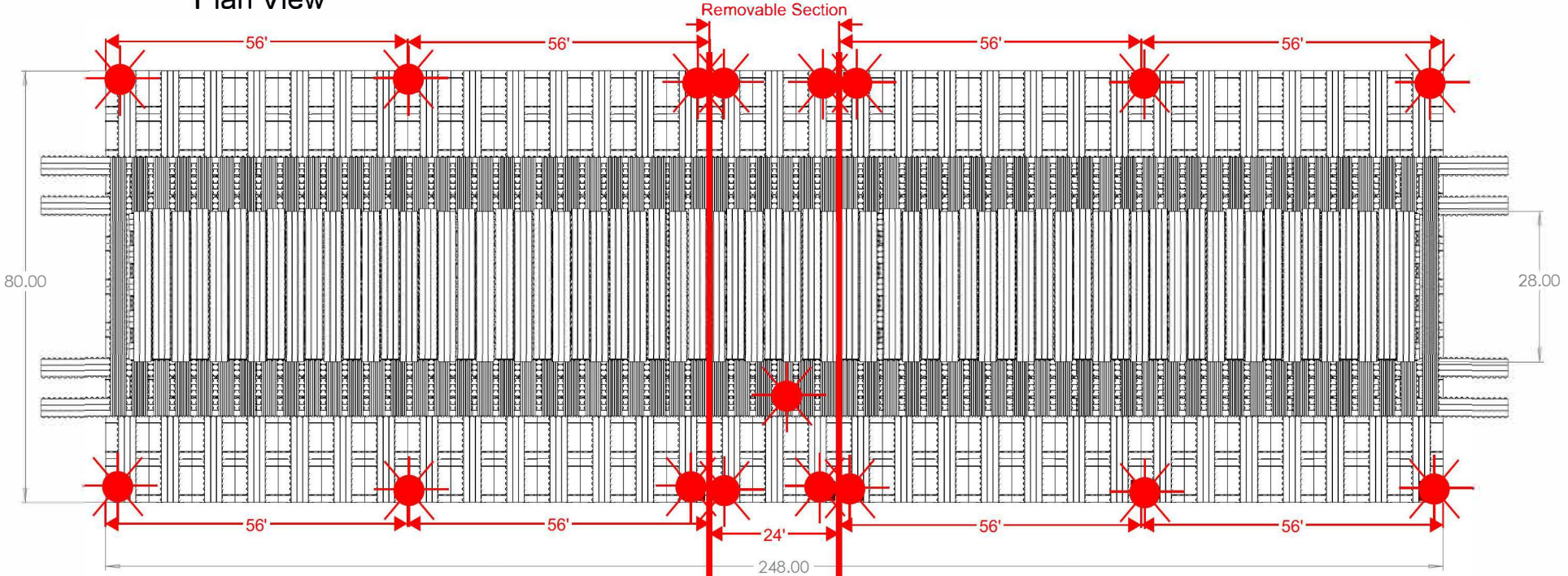


Open-to-Navigation Position

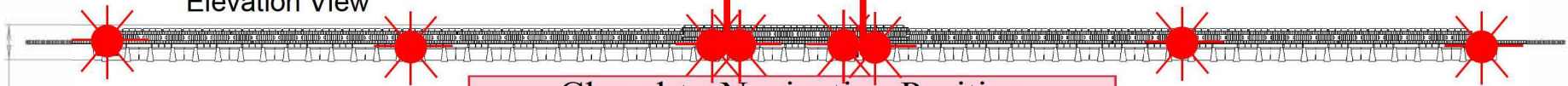
The upstream and downstream edges of the temporary bridge will be lighted at night with steady burning red lights. When open, the upstream and downstream four corners of the temporary bridge's navigation span will be lighted at night with steady burning green lights. All lights shall be of sufficient candle power so as to be seen at 2,000 yards by approaching vessels.

Lighting Plan Temporary Floating Bridge Gallinas Creek

Plan View



Elevation View

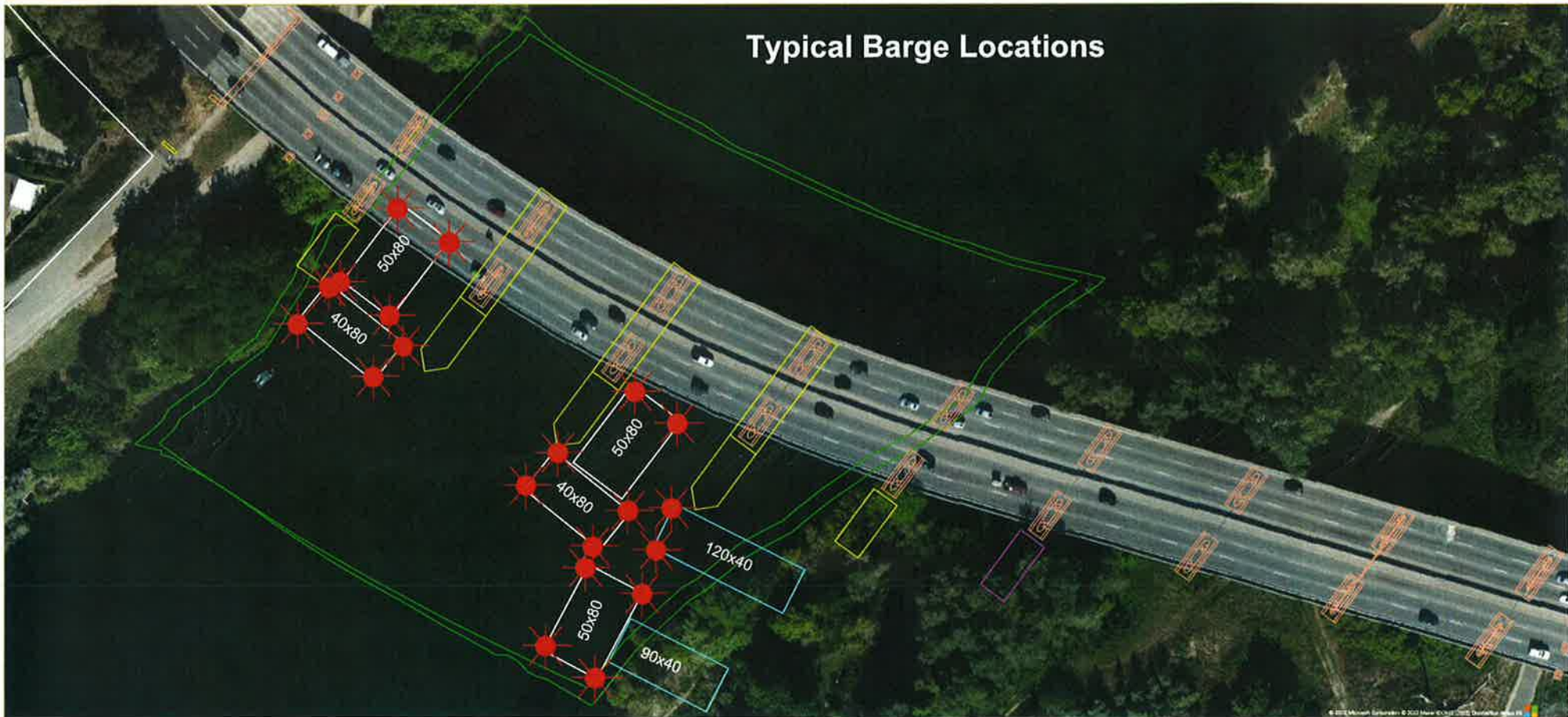


Closed-to-Navigation Position

The upstream and downstream edges of the temporary bridge will be lighted at night with steady burning red lights. All lights shall be of sufficient candle power so as to be seen at 2,000 yards by approaching vessels.

Rehabilitation and Modification Project
Capital City (CA Route 51) Bridge, Mile 4.0, American River

Typical Barge Location and Typical Barge Lighting



Each corner of each barge is lighted at night with steady burning all-round red light, visible at 2,000 by approaching vessels. All vessels transiting the project area should use extreme caution. Turbidity curtains will be placed at different locations during the project. The next four diagrams show the proposed location of the curtains.

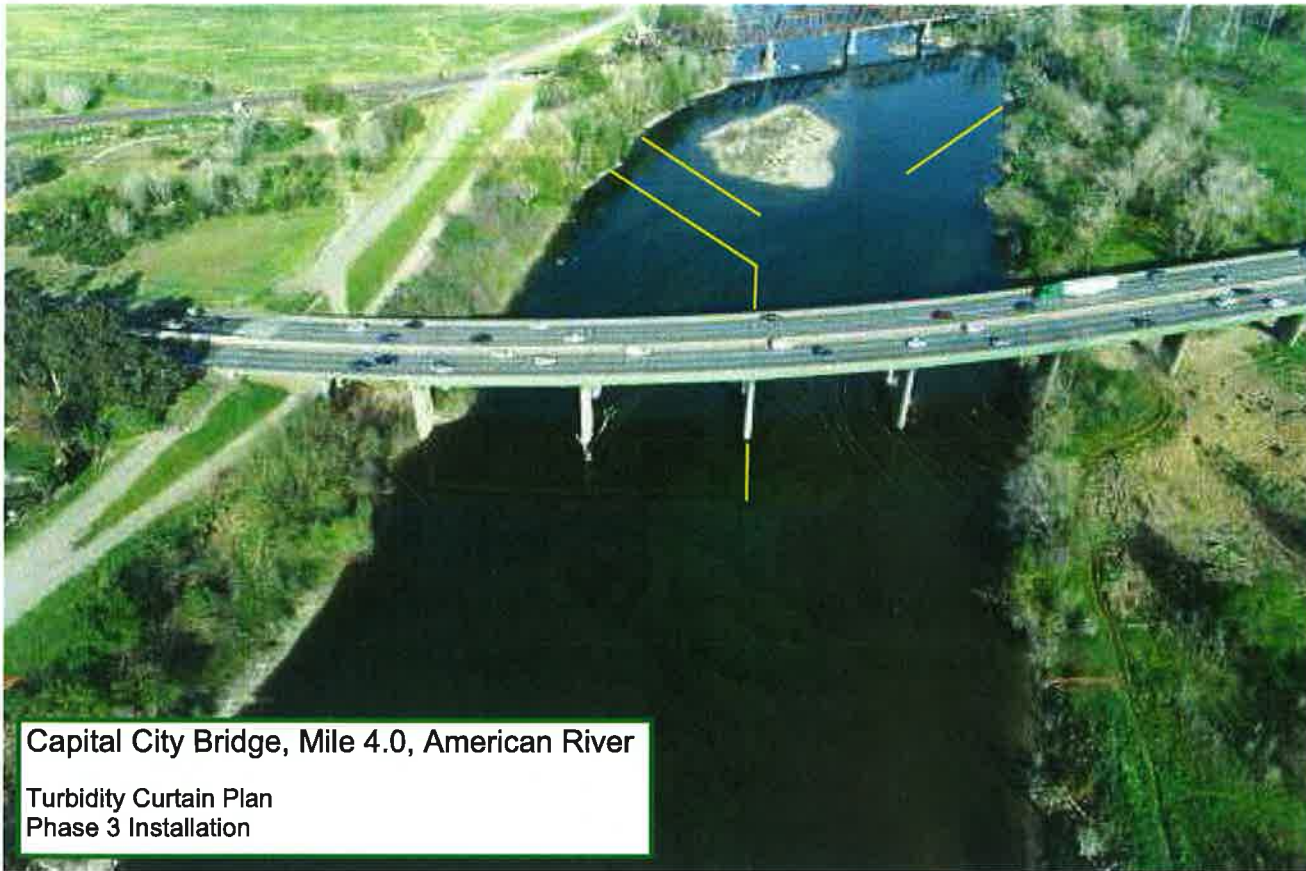


Capital City Bridge, Mile 4.0, American River
Turbidity Curtain Plan
Phase 1 Installation



Capital City Bridge, Mile 4.0, American River

Turbidity Curtain Plan
Phase 2 Installation



Capital City Bridge, Mile 4.0, American River

Turbidity Curtain Plan
Phase 3 Installation



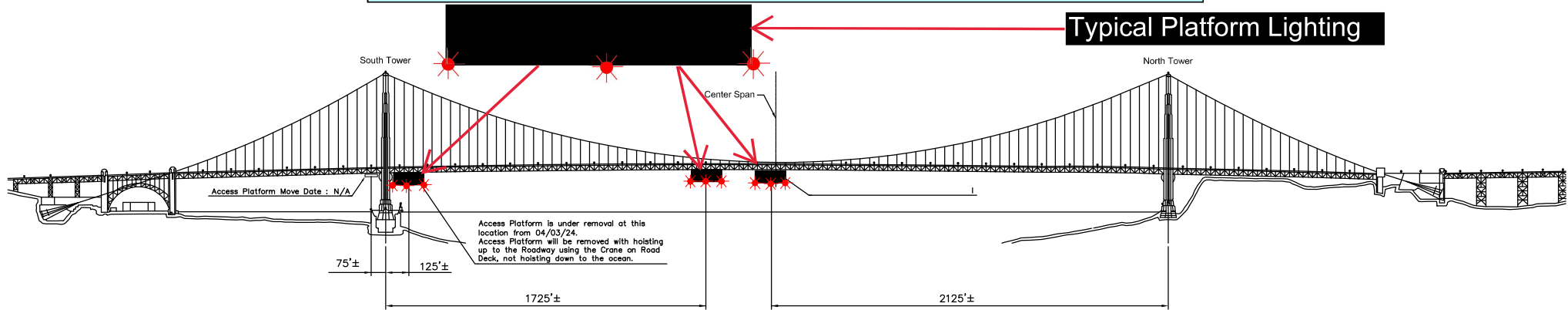
Capital City Bridge, Mile 4.0, American River

Turbidity Curtain Plan
Phase 4 Installation

Temporary Access Platforms

Golden Gate Bridge, mile 2.5, San Francisco Bay

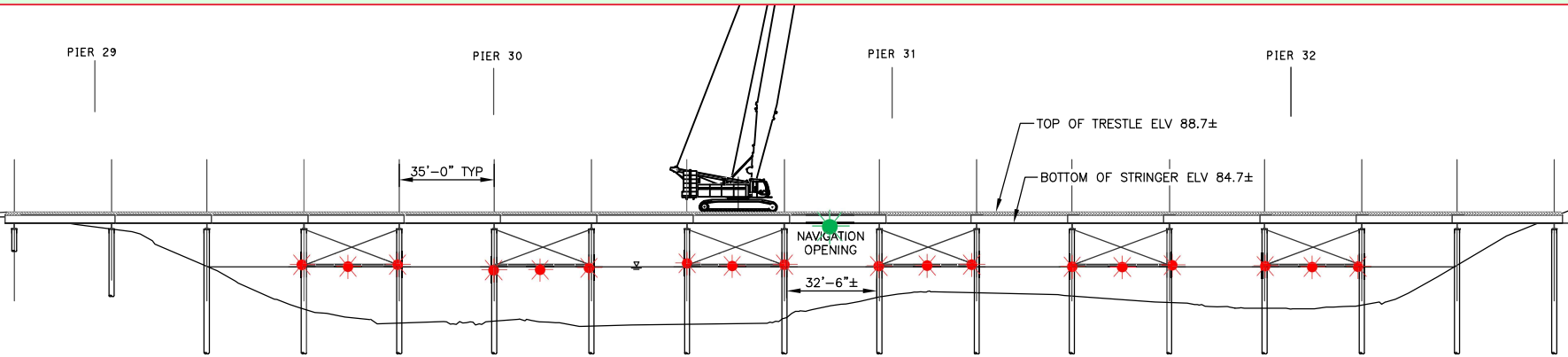
Revised 24 Apr 24




Three 54 ft wide temporary platforms are installed in the main span below low steel of the bridge, in relation to centerline of the span; one south of the north tower and two north of the south tower, reducing vertical clearance by no more than 14 feet. The upstream and downstream lower edges of the temporary platforms will be lighted at night with steady burning red lights visible at 2,000 yards by approaching vessels.

Butte City Bridge Replacement Project

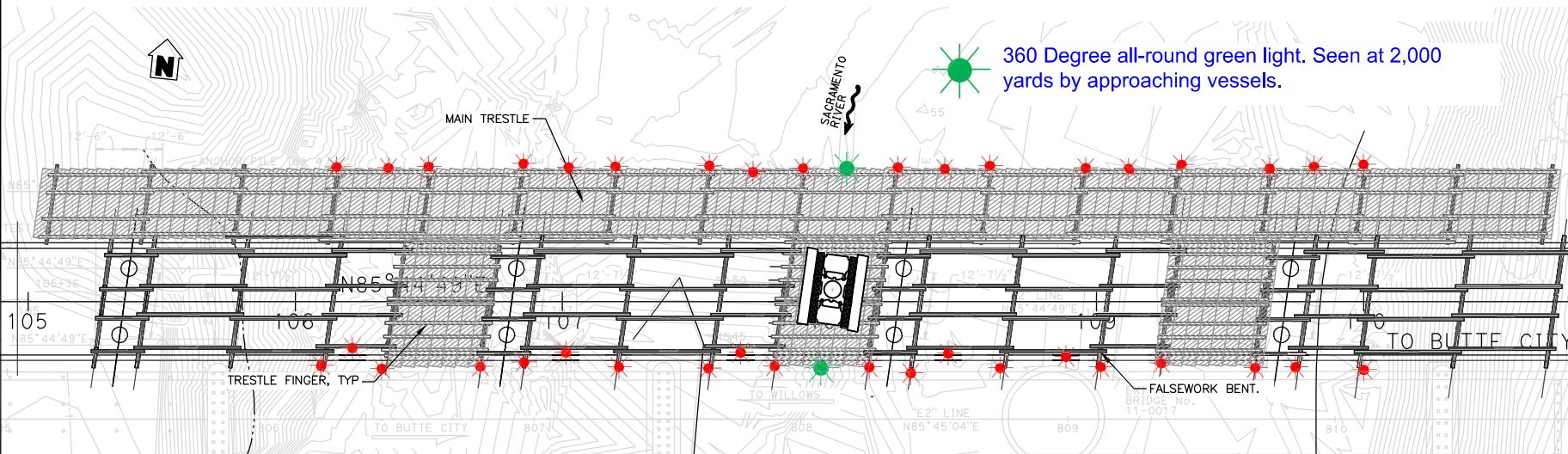
Sacramento River



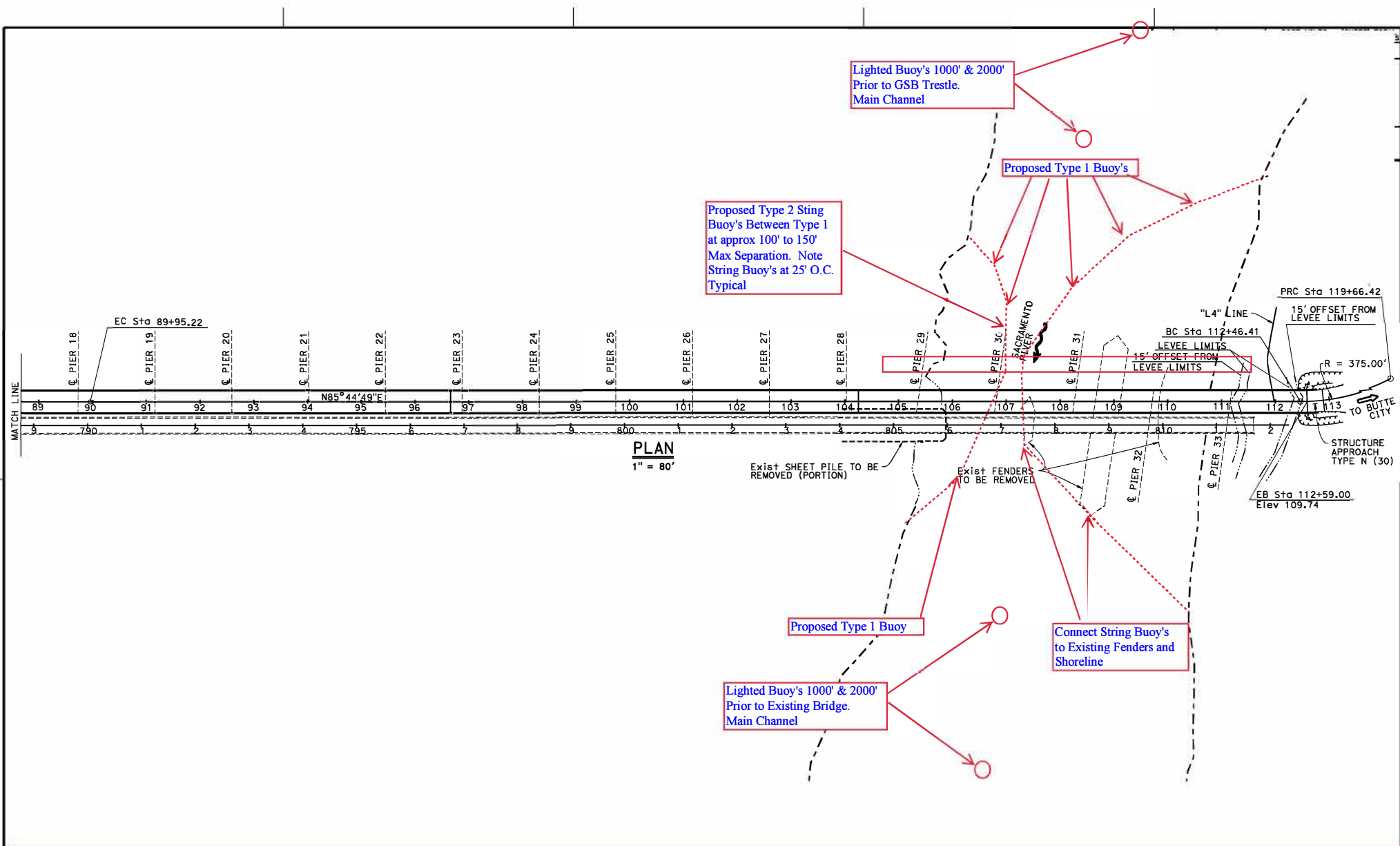
MAIN TRESTLE PROFILE
SCALE: 1:40

 360 Degree all-round red light. Seen at 2,000 yards by approaching vessels.

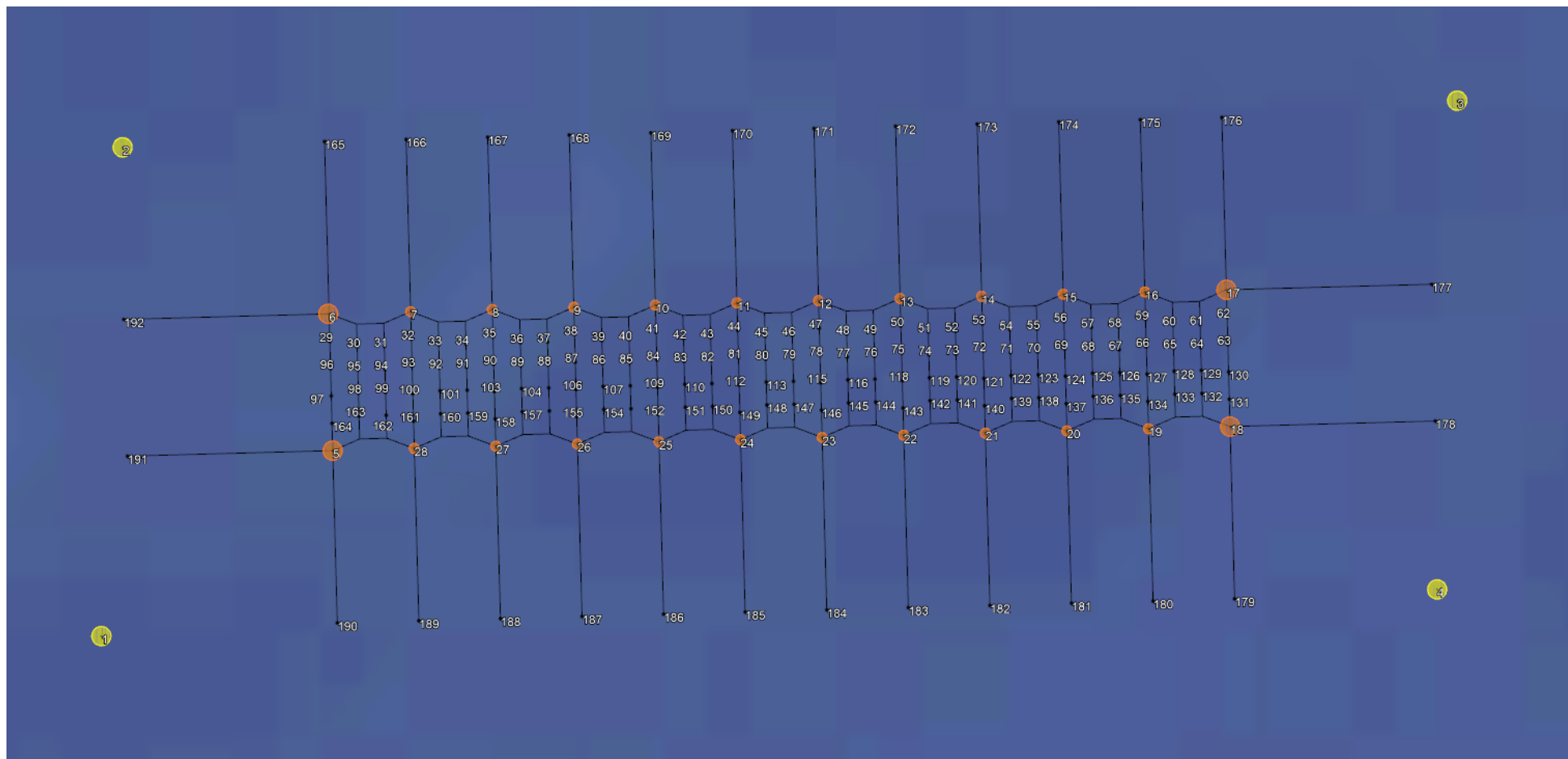
 360 Degree all-round green light. Seen at 2,000 yards by approaching vessels.



The upriver and downriver ends of the trestle piles and crossbeams are lighted at night with steady burning red lights. The upriver and downriver low steel of the temporary navigation span, in the center of the river, is lighted at night with steady burning green lights, which identifies the center of the temporary navigation span.



**Butte City Bridge Replacement Project, mile 169.7, Sacramento River
Proposed Buoy Line During Construction**



4 ALBERT EMBANKMENT
LONDON SE1 7SR
Telephone: +44 (0)20 7735 7611 Fax: +44 (0)20 7587 3210

COLREG.2/Circ.78
28 November 2022

TRAFFIC SEPARATION SCHEMES AND ASSOCIATED MEASURES

1 The Maritime Safety Committee, at its 106th session (2 to 11 November 2022), having considered the recommendation made by the Sub-Committee on Navigation, Communications and Search and Rescue at its ninth session (21 to 30 June 2022), and in accordance with the *Procedure for the adoption and amendment of traffic separation schemes, routing measures other than traffic separation schemes, including designation and substitution of archipelagic sea lanes, and ship reporting systems* (resolution A.858(20)), adopted traffic separation schemes and associated measures, as follows:

- .1 amended traffic separation schemes and associated measures *Approaches to the Chornomorsk, Odesa and Pivdennyi ports*, which replace the existing traffic separation schemes *Between the ports of Odessa and Ilichevsk* and *In the approaches to the ports of Odessa and Ilichevsk* (COLREG.2/Circ.14, paragraphs 1.1.2 and 1.1.3); and
- .2 amendments to the traffic separation scheme *In the Santa Barbara Channel* (COLREG.2/Circ.64, annex 6),

as set out in annexes 1 and 2, respectively.

2 Accordingly, the aforementioned traffic separation schemes and associated measures will be implemented at 0000 hours UTC on 1 June 2023.

ANNEX 2

**AMENDMENTS TO THE TRAFFIC SEPARATION SCHEME
"IN THE SANTA BARBARA CHANNEL"**

In the Santa Barbara Channel

(Reference charts: United States 18700, 2013 edition; 18720, 2020 edition; and 18721, 2009 edition.

Note: These charts are based on North American 1983 datum)

Part II

Between Point Conception and Point Arguello

The description of the traffic separation scheme in part II "Between Point Conception and Point Arguello" is replaced by the following:

(a) A separation zone is bounded by a line connecting the following geographical positions:

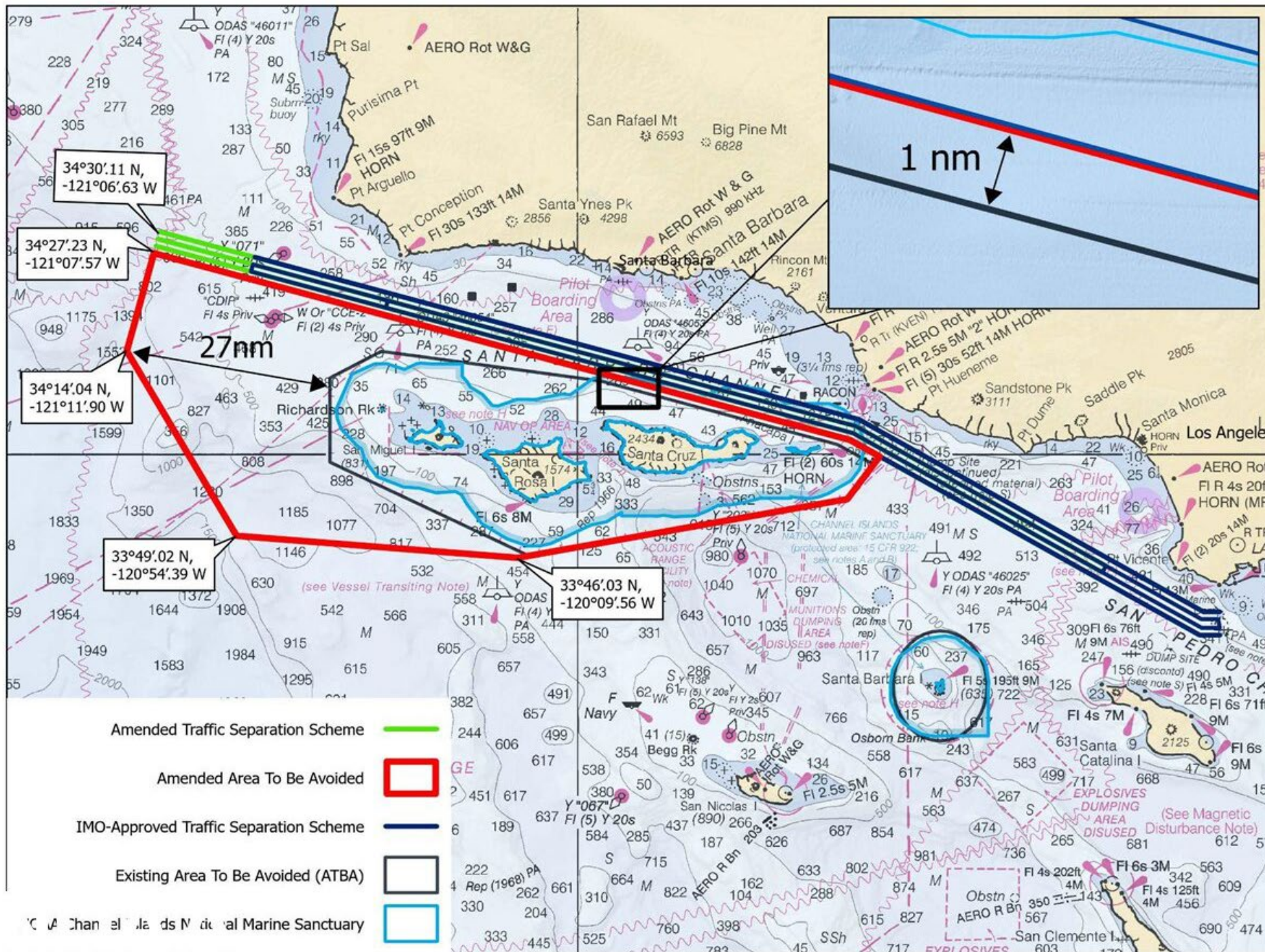
(1) 34°20'.84 N, 120°30'.28 W (13) 34°29'.15 N, 121°06'.94 W
(6) 34°19'.88 N, 120°30'.59 W (14) 34°28'.19 N, 121°07'.26 W

(b) A traffic lane for westbound traffic is established between the separation zone and a line connecting the following geographical positions:

(7) 34°21'.80 N, 120°29'.96 W (15) 34°30'.11 N, 121°06'.63 W

(c) A traffic lane for eastbound traffic is established between the separation zone and a line connecting the following geographical positions:

(12) 34°18'.92 N, 120°30'.91 W (16) 34°27'.23 N, 121°07'.57 W





To: All Mariners

April 1, 2024

The National Oceanic and Atmospheric Administration (NOAA), with support from the United States Coast Guard (USCG) and Environmental Protection Agency (EPA) is issuing a voluntary 10-knot Vessel Speed Reduction (VSR) request that goes into effect May 1 off the coasts of San Francisco, Monterey, and southern California; please see the attached charts. Large ships traveling at 10 knots or less give whales more time to move to avoid a strike, reduce the lethality of a strike should one occur, and generate less harmful ocean noise and fewer air emissions. Thus, the goals of these voluntary VSR zones are to reduce the risk of fatal ship strikes to endangered and threatened blue, fin, and humpback whales, reduce ocean noise, and protect public health along the California coast. These whale species are protected under the Federal Endangered Species Act (16 U.S.C. 1538 et seq.), the Marine Mammal Protection Act (16 U.S.C. 1361 et seq.), and the National Marine Sanctuaries Act (16 U.S.C. 1431 et seq.). Any unauthorized take of whales, even if unintentional, by vessels transiting in U.S. waters violates federal statutes.

The voluntary VSR requests will be in effect May 1 to December 31, 2024 for the San Francisco and Monterey Bay Region zones and May 1 to December 15, 2024 for the southern California zone, as shown in the attached charts. The VSR period is being extended by two weeks in the San Francisco and Monterey Bay Region zones due to concerns about the extended presence of protected humpback whales in recent years off Central California. NOAA, USCG, and EPA request that all vessels 300 gross tons (GT) or larger reduce speeds to 10 knots when transiting within the designated VSR zones and prioritize use of the western traffic lane of the San Francisco TSS when traveling in the San Francisco Offshore TSS. Vessels may deviate from the speed and routing recommendations whenever necessary to maintain safe maneuvering.

We request your cooperation with the voluntary VSR requests to protect the health of coastal communities and whales that annually migrate to and through these zones to feed. All transits by vessels 300 GT or larger are analyzed by NOAA via Automatic Information System (AIS) data provided by USCG to assess the cooperation of your company along with industry as a whole.

NOAA, USCG, and EPA are committed to the long-term protection of nationally significant marine resources and public health by enhancing marine safety and environmental awareness in the maritime community. If you have questions, please contact Sean Hastings, 805-705-1790, sean.hastings@noaa.gov.

NOAA, USCG, and EPA commend your commitment to protecting endangered and threatened whales and protecting public health by cooperation with the 10 knot VSR requests and working towards a goal of 100% cooperation in 2024.

Handwritten signature of William J. Douros in blue ink.

William J. Douros, Regional Director
NOAA Office of National Marine Sanctuaries
West Coast Region

Handwritten signature of Jennifer Quan in blue ink.

Jennifer Quan, Regional Administrator
NOAA National Marine Fisheries Service
West Coast Region

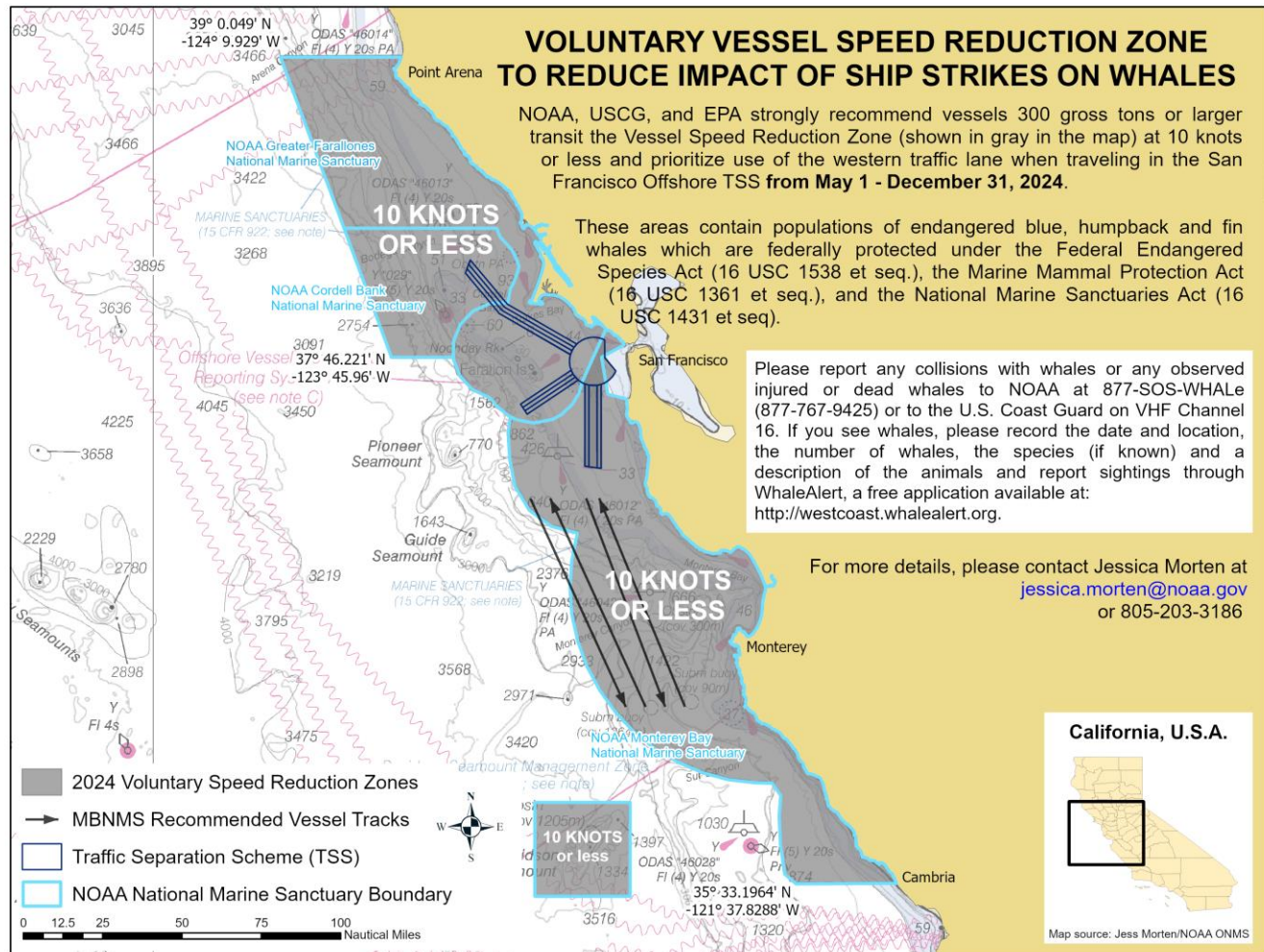
Handwritten signature of Andrew M. Sugimoto in blue ink.

Andrew M. Sugimoto, Rear Admiral
U.S. Coast Guard
District Eleven

Handwritten signature of Martha Guzman in blue ink.

Martha Guzman, Regional Administrator
Environmental Protection Agency
Region 9

2024 Voluntary Vessel Speed Reduction Zones – San Francisco and Monterey Bay Region

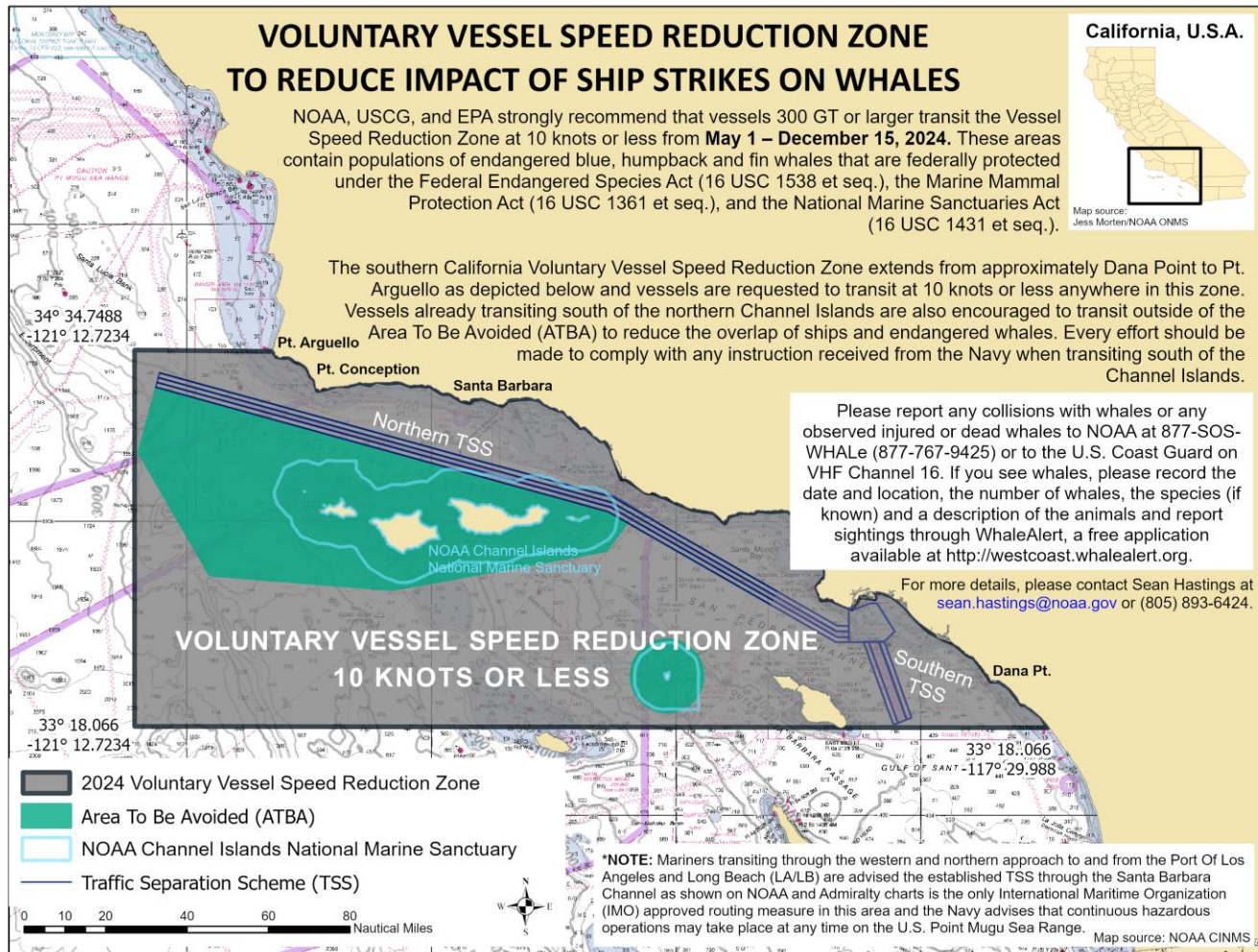


NOAA Chart 501

This map is not to be used for navigational purposes

16 FEBRUARY 2024

2024 Voluntary Vessel Speed Reduction Zone – Southern California Region



NOAA Chart 18022

Chart not for navigational purposes.

18 MARCH 2024



M/V Island Pride – Call Sign: LAGN8



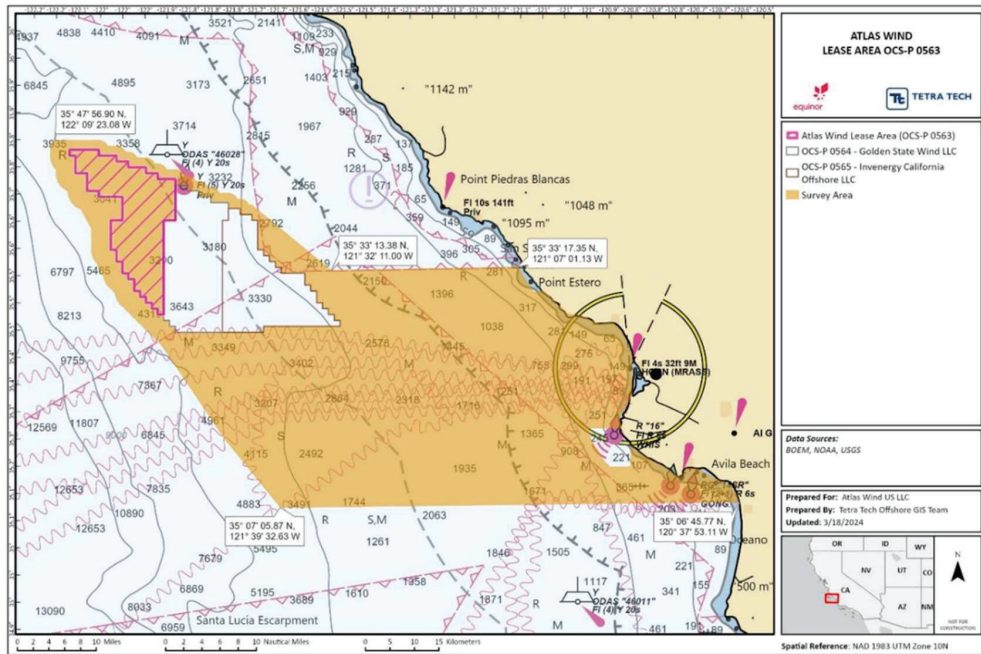
R/V Taku – Call Sign: TAKU

RADIO FREQUENCY VESSELS CAN BE CONTACTED ON : VHF channel 16

PASSING ARRANGEMENTS:

During the survey the M/V Island Pride and R/V Taku will be deploying subsurface survey equipment along the route corridor and in the Lease Area (OCS-P 0563) and will be restricted in their ability to maneuver. Approaching vessels are requested to pass at a safe speed and distance.

Chart of Survey Area within both state and federal waters with latitude and longitude of approximate Survey Area boundaries



SURVEY COORDINATES OF LEASE AREA AND SURVEY AREA

SURVEY COORDINATES OF THE LEASE AREA	
Latitude	Longitude
35.7248	-121.8855
35.6491	-121.8865
35.6494	-121.9130
35.4793	-121.9154
35.4764	-121.9286
35.5963	-122.0330
35.6504	-122.0323
35.6502	-122.0058
35.6934	-122.0053
35.6939	-122.0583
35.7049	-122.0847
35.7375	-122.1109
35.7701	-122.1238
35.7809	-122.1237
35.7804	-122.0573

SURVEY COORDINATES OF THE SURVEY AREA	
Latitude	Longitude
35.5548	-121.117
35.4484	-120.906
35.1127	-120.631
35.1182	-121.659
35.4263	-121.93
35.6353	-122.077
35.7991	-122.156
35.743	-121.905
35.6762	-121.714
35.5537	-121.536

Pier Protection Replacement Project
BNSF Rail Bridge
Mile 10.4, Old River
March 25, 2024 to September 27, 2024



Typical barge location. The working barge will be lighted at night with all-round red lights. For the safety of navigation, the barge can be moved, 24-hours a day, if at least 1-hour notice is given to the contractor, Pacific Pile & Marine.



RESEARCH EQUIPMENT IN WATER

California Waters
June 17th, 2024 to September 30th, 2024

SAILDRONE, INC. will operate one Uncrewed Surface Vehicle called “SAILDRONE SURVEYOR”, for research offshore San Francisco/Monterey Bay. SAILDRONE SURVEYOR will be conducting operations in the area listed below from the time it arrives to the area through September 30th, 2024 periodically returning to Alameda, CA for scheduled maintenance.

Area 1

37-28-30N, 123-10-16W
37-28-30N, 122-47-49W
37-03-10N, 122-47-49W
37-03-10N, 123-10-16W

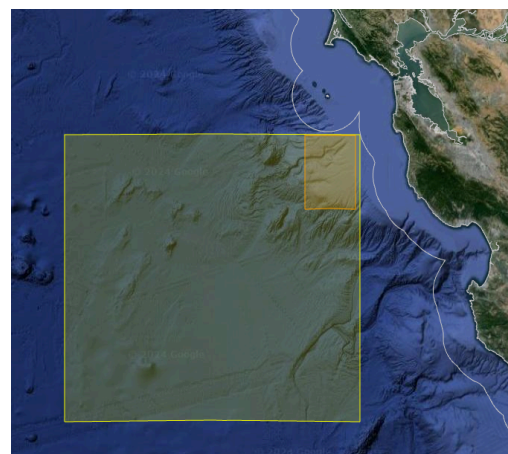
Area 2

37-28-40N, 124-56-44W
37-28-40N, 122-46-00W
35-49-12N, 122-46-00W
37-49-12N, 124-56-44W

VESSELS ARE REQUESTED TO TRANSIT THE AREA WITH CAUTION, AND REMAIN GREATER THAN 500 METERS AWAY FROM THE RESEARCH EQUIPMENT.

Saildrone Surveyor is a primarily wind powered Uncrewed Surface Vehicle also equipped with an inboard engine. Surveyor carries oceanographic instrumentation and is controlled from shore through satellite communications.

- **AIS:** “SAILDRONE SURVEYOR”
- **MMSI:** 338179262
- **Color:** Orange
- **Lights:** Tricolor, Running lights/stern light
- **Radar Reflecting:** Yes
- **Length:** 22 m
- **Width:** 1.8 m
- **Height:** 14 m
- **Draft:** 3.6 m
- **Average speed:** 7 knots

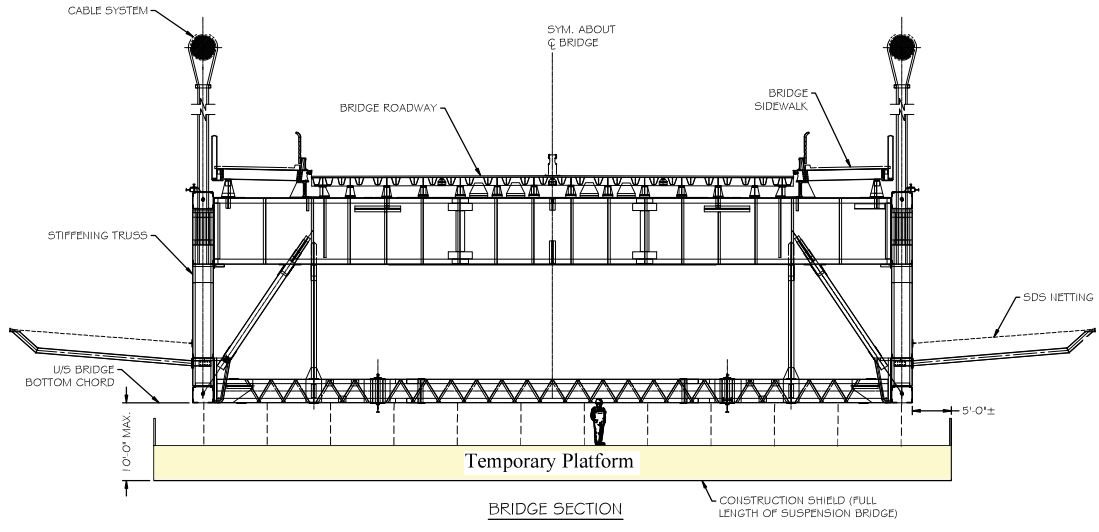
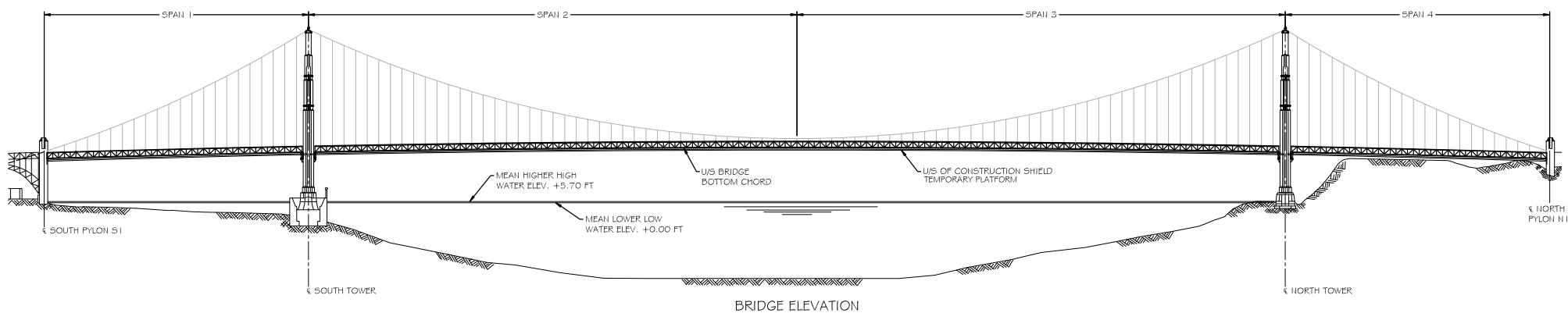
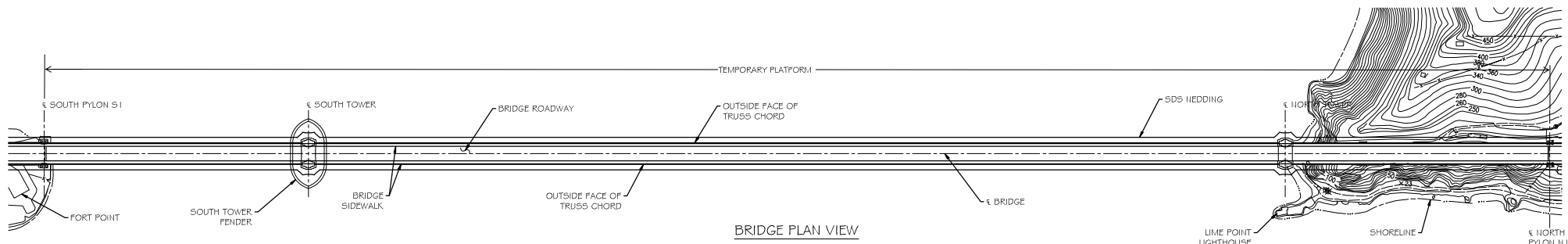


SAILDRONE MISSION CONTROL
(510) 722-6070
missioncontrol@saildrone.com



Sea floor Segment HDPE Pipeline pull-out route

Proposed Temporary Platform-Seismic Retrofit Project Golden Gate Bridge, Mile 2.5, San Francisco Bay

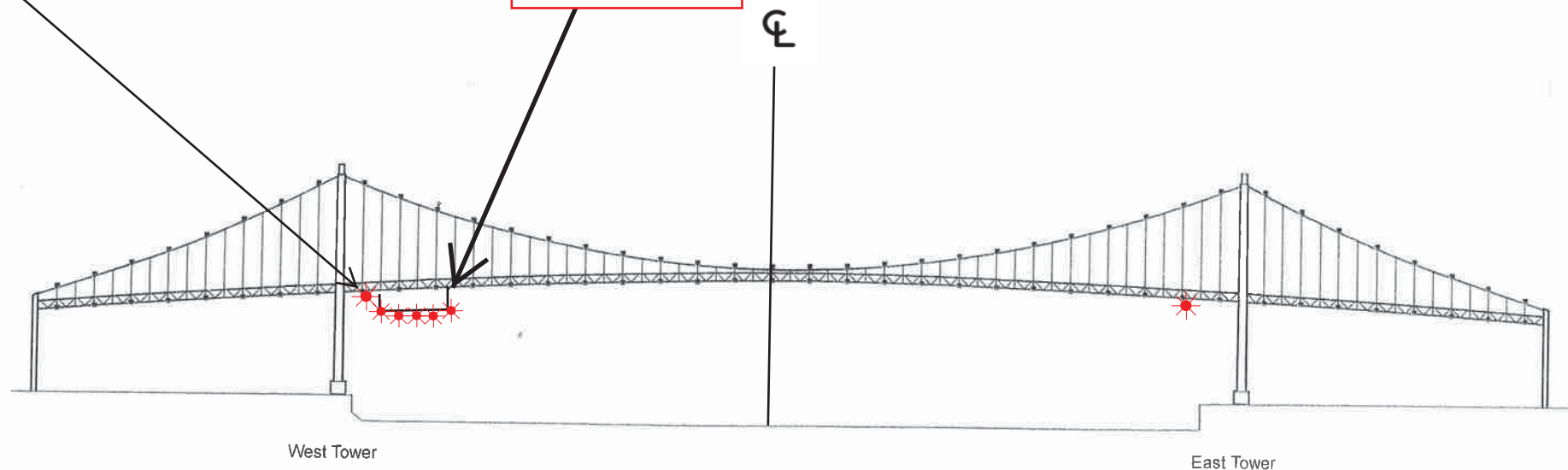


The proposed temporary platform will reduce vertical clearance of the bridge by no more than 10 feet. Project is anticipated to begin Fall of 2025.

Vincent Thomas Highway Bridge
Mile 3.0
Los Angeles/Long Beach Harbor
Painting Project

West Channel Margin
Light

Below Low Steel
Platform. 5' 4"
reduction in
vertical clearance



A 180 foot long under deck temporary platform will reduce vertical clearance by 5' 4". Each corner and every 50 feet along the the upstream and downstream side of the platform will lighted at night with steady burning red lights visible at 2000 yards by approaching vessels. In a duration of 1-year the platform will progress from the western channel margin light to 250' west of the centerline of the bridge.