



U.S. Department
of Homeland Security
**United States
Coast Guard**

LOCAL NOTICE TO MARINERS

District: 11

Week: 09/24

CORRESPONDENCE TO:
COMMANDER
DISTRICT ELEVEN (DPW)
COAST GUARD ISLAND BUILDING 50-2
ALAMEDA, CA 94501-5100

REFERENCES: COMDTPUB P16502.6, Light List Volume VI, 2017 Edition, U.S. Chart No.1 12th Edition, and Coast Pilot Volume 7 49th Edition. These publications, along with corrections, are available at: <https://nauticalcharts.noaa.gov/>

BROADCAST NOTICE TO MARINERS - Information concerning aids to navigation and waterway management promulgated through BNM HB-0004-24, SF-0037-24, LA-0046-24, and SD-0025-24 have been incorporated in this notice, or will continue if still significant.

SECTION I - SPECIAL NOTICES

This section contains information of special concern to the Mariner.

SUBMITTING INFORMATION FOR PUBLICATION IN THE LOCAL NOTICE TO MARINERS

A complete set of guidelines with examples and contact information can be found at <http://www.pacificarea.uscg.mil/Our-Organization/District-11/Prevention-Division/LnmRequest/> or call Waterways Management Branch at 510-437-2929 or e-mail D11-SMB-D11-LNM@uscg.mil. Please provide all Local Notice to Mariners submissions 14 days prior to the start of operations

LNM: 17/21

BRIDGE INFORMATION- PROJECTS, DISCREPANCIES, CORRECTIONS & REGULATORY

For all bridge related issues, including lighting, operation, obstructions, construction, demolition, etc. contact the Eleventh Coast Guard District Bridge Administrator 24 hour cell phone at 510-219-4366. Flotsam may accumulate on and near bridge piers and abutments. Mariners should approach all bridges with caution. A vessel delay at a drawbridge may be reported to the District Bridge Administrator by telephone, or by using the Delay_Report_11-2017.pdf included in the Enclosures section of this Local Notice to Mariners.

BRIDGE INFORMATION-COMMUNICATIONS PROTOCOL-BENICIA/MARTINEZ UPRR BRIDGE- CARQUINEZ STRAIT

All mariners requiring a bridge lift at the Benicia-Martinez Union Pacific Railroad Bridge, mile 7.0, over the Carquinez Strait, California, should follow the protocol in the document entitled "Coordination of Communications for Union Pacific Railroad Lift Operations." Mariners can download a copy of the document by selecting the link BENICIA-MARTINEZ RR BRIDGE under the QUICK LINKS section at <https://www.pacificarea.uscg.mil/vtssf>.

CAUTION TO BE USED IN RELIANCE UPON AIDS TO NAVIGATION

The aids to navigation depicted on charts comprise a system of fixed and floating aids to navigation with varying degrees of reliability. Prudent mariners will not rely solely on any single aid to navigation, particularly a floating aid to navigation. With respect to buoys, the buoy symbol is used to indicate the approximate position of the buoy body and the sinker which secures the buoy to the seabed. The approximate position is used because of the practical limitations in positioning and maintaining buoys and their sinkers in precise geographical locations. These limitations include, but are not limited to, inherent imprecision in position fixing methods, prevailing atmospheric and sea conditions, slope of and the material making up the seabed, the fact that buoys are moored to sinkers by varying length of chain, and the fact that the buoy body and/or sinker positions are not under continuous surveillance, but are normally checked only during periodic maintenance visits which often occur more than a year apart. Due to the forces of nature, the position of the buoy body can be expected to shift inside and outside the charted symbol. The mariner is also cautioned that buoys may be extinguished or sound signals may not function as the result of natural causes, collisions, or other accidents. For the foregoing reasons, a prudent mariner must not rely completely upon the position or operation of floating aids to navigation, but will also utilize bearings from fixed objects and aids to navigation on shore. Furthermore, a vessel attempting to pass close aboard always risks collision with a yawing buoy or with the obstruction that the buoy marks.

NAVIGATION CENTER WEBSITE TRANSITION

The U.S. Coast Guard Navigation Center is going to transition the Navigation Center website to a new, enhanced version in the first quarter of 2022. As part of this transition, URLs will be updated across the site including URLs linked to PDFs. Therefore, once the transition is complete, legacy site URLs will no longer function, including bookmarked URLs and URLs used in automatic downloading of data and/or products. Outdated URLs will automatically redirect to the home page of the site, and from there you will be able to easily navigate to your preferred page.

Below are a few of the "old"/new URL pairs listed for your convenience. Please note that the new URLs will not be active until we launch the new

website. Of course, once it is launched, the new URLs will be available for re-bookmarking. As a reminder, these are top level URLs that may contain additional links that you use.

This notice will be updated when the final launch date is determined and another notice will be issued to notify you when the site goes live. Questions/concerns may be directed to the NAVCENWebTEAM@uscg.mil.

Local Notices to Mariners (LNMs)

Current URLs: <https://www.navcen.uscg.gov/?pageName=lnmMain>

Replacement: <https://www.navcen.uscg.gov/local-notices-to-mariners-by-cg-district>

Light Lists Annual Publication

Current URLs: <https://navcen.uscg.gov/?pageName=lightLists>

Replacement: <https://www.navcen.uscg.gov/light-list-annual-publication>

Light List - Weekly

Current URLs: <https://navcen.uscg.gov/?pageName=lightListWeeklyUpdates>

Replacement: <https://www.navcen.uscg.gov/weekly-light-lists>

Light List - Corrections

Current URLs: <https://navcen.uscg.gov/?pageName=lightListCorrections>

Replacement: <https://www.navcen.uscg.gov/light-list-summary-of-corrections>

LNM: 06/22

SAFETY NOTICE - NAVIGATIONAL RANGE AND SECTOR LIGHTS ON ELECTRONIC CHARTS

"The U.S. Coast Guard has become aware that the Range and Sector Light Characteristic labels are not displayed on Electronic Navigational Charts (ENCs) when used in an Electronic Chart Display and Information System (ECDIS) due to limitations of the S-52 ECDIS display specification. Mariners may query the ENC data directly within ECDIS or refer to the Light List for complete information on Range and Sector Light Characteristics."

LNM: 39/22

SOUTHERN CALIFORNIA - CHANNEL ISLANDS - AREA TO BE AVOIDED (ATBA) ENLARGED

In November of 2022, the International Maritime Organization (IMO) issued an adopted amendment, which goes into effect June 1, 2023. The amendment describes changes to the existing Area To Be Avoided (ATBA) around the Channel Islands, CA. As a result of these changes, the Area To Be Avoided (ATBA) has been significantly increased in size. Please be advised that, per an agreement with the USCG Headquarters, NOAA cartographers used more accurate points expressed in degrees, minutes, seconds, and hundredths of seconds, rather than the derived IMO positions published in the IMO circular, which are slightly degraded in terms of accuracy. For details, please see Enclosure included in this Local Notice to Mariners.

Charts: 18020 18022 18700 18720 18724 18725 18728 18729 18740

LNM: 21/23

SOUTHERN CALIFORNIA-SAN DIEGO BAY-MINIMIZE WAKE

The Navy Port Operations Manager requests that vessels slow to 7 kts when a vessel is moored in restricted area (33 CFR 334.865) located on the northeast side of North Island at 32-42-57N 117-11-22W, between San Diego Channel Lighted Buoy 20 (LLNR 1710) and San Diego Channel Lighted Buoy 22 (LLNR 1830). For more details or comments contact LT Rodriguez at 619-545-3232, Rigoberto.rodriguez3@navy.mil.

Chart 18773

LNM: 10/22

SUBMITTING INFORMATION FOR PUBLICATION IN THE LOCAL NOTICE TO MARINERS

Coast Guard District Eleven Waterways upgrade to E-Mail capabilities. All future requests for article submission in the District Eleven Local Notice to Mariners are requested to be E-Mailed to D11-SMB-SMB-D11-LNM@uscg.mil at least two weeks prior to the operation. For more details or comments please contact District Eleven Waterways Management Branch at 510-437-2929 or e-mail D11-SMB-D11-LNM@uscg.mil. Coast Guard District Eleven requests all Local Notice to Mariners submissions be E-Mailed to our office at least 14 days prior to the start of operations for timely submittal and publication.

LNM: 17/21

SECTION II - DISCREPANCIES

This section lists all reported and corrected discrepancies related to Aids to Navigation in this edition. A discrepancy is a change in the status of an aid to navigation that differs from what is published or charted.

DISCREPANCIES (FEDERAL AIDS)

LLNR	Aid Name	Status	Chart No.	BNM Ref.	LNM St	LNM End
181	NOAA Environmental Lighted Buoy 46025	LT EXT	18720	LA-0045-24	09/24	

240	Morro Bay West Breakwater Light	SS INOP	18703	LA-0018-24	04/24
297	NOAA Environmental Lighted Buoy 46042	MISSING	18680	SF-0180-23	49/23
330	Pillar Point Harbor Approach Lighted Buoy PP	TMK MISSING	18680	SF-0081-23	17/23
365	Mile Rocks Light	LT EXT	18649	SF-0099-22	44/22
448	Dart Tsunami Warning Lighted Buoy Station 46411	ADRIFT	18010	SF-0017-24	06/24
490	Humboldt Bay Entrance Lighted Whistle Buoy HB	REDUCED INT	18620	HB-0013-23	46/23
1493	San Diego Bay Approach Lighted Bell Buoy 4	LT IMCH	18772	SD-0074-22	41/22
1535	Zuniga Jetty Light W	STRUCT DEST	18773	SD-0038-23	26/23
1545	San Diego Bay Channel Lighted Buoy 8	OFF STA	18773	SD-0070-23	39/23
1619	San Diego North Island Shallow Water Habitat Light D	STRUCT DEST	18773	SD-0016-24	05/24
2295	Oceanside Breakwater Light 1	REDUCED INT/STRUCT DMGD	18758	SD-0025-24	09/24
2635	Ship Rock Light	LT EXT	18757	LA-0095-21	26/21
2641	Isthmus Cove Harbor Reefs Light	STRUCT DMGD	18757	LA-0018-21	05/21
2670	Santa Catalina Island West End Light	LT EXT	18757	LA-0113-19	34/19
2810	Anaheim Bay Channel Buoy 7	OFF STA	18749	LA-0062-22	30/22
3132	Terminal Island Channel Lighted Buoy 1	STRUCT DMGD	18749	LA-0027-22	16/22
3330	Redondo Beach West Jetty Light 3	STRUCT DEST	18744	LA-0021-23	09/23
3835	Morro Bay West Breakwater Light	SS INOP	18703	LA-0018-24	04/24
3855	Morro Bay Channel Lighted Buoy 4	LT EXT	18703	LA-0165-23	51/23
3970	Monterey Harbor Light 6	SS INOP	18685	SF-0064-20	27/20
4125	Southeast Reef Southern End Lighted Gong Buoy 1S	STRUCT DEST/SINKING	18680	SF-0004-24	02/24
4130	Pillar Point Harbor Entrance Lighted Gong Buoy 1	SS INOP/STRUCT DMGD	18680	SF-0082-23	17/23
4145	Pillar Point Harbor Entrance Light	LT EXT/SS INOP	18680	SF-0007-24	04/24
4245	Mile Rocks Light	LT EXT	18649	SF-0099-22	44/22
4315	Alcatraz Light	REDUCED INT	18650	SF-0151-23	41/23
4610	Oakland Outer Harbor Range B Front Light	DAYMK MISSING	18650	SF-0070-23	14/23
4625	Oakland Outer Harbor Range A Rear Light	LT EXT	18650	SF-0092-22	42/22
4655	Oakland Outer Harbor Light 13	MISSING/TRLB	18650	SF-0067-23	14/23
4680	Oakland Inner Harbor Light 10	MISSING/TRLB	18650	SF-0052-21	02/22
4684	Oakland Inner Harbor Turn Basin Light B	STRUCT DMGD/TRLB	18650	SF-0097-21	29/21
4740	San Leandro Bay Airport Channel Daybeacon 6	STRUCT DEST/TRUB	18650	SF-0033-22	15/22
4830	San Leandro Marina Channel Light 1	LT EXT/SS INOP		SF-0012-23	02/23
5225	Redwood Creek Light 11	STRUCT DEST/TRLB		SF-0148-23	41/23
5415	San Francisco Bay North Channel Lighted Bell Buoy 6	LT EXT	18650	SF-0186-23	51/23
5430	Berkeley Marina Channel Light 2	LT EXT	18650	SF-0086-22	40/22
5725	Richmond Harbor Channel Light 9	MISSING/TRLB	18649	SF-0098-22	43/22
5845	San Rafael Creek Light 3	STRUCT DEST	18653	SF-0109-23	48/23
5865	East Brother Light	LT EXT	18649	SF-0029-24	08/24
5890	San Pablo Bay Preferred Channel Lighted Buoy E	MISSING	18654	SF-0152-23	42/23
6095	Mare Island Strait Light 2	STRUCT DMGD/TRLB	18655	SF-0152-20	49/20
6100	Mare Island Strait Light 3	STRUCT DEST/TRLB	18655	SF-0173-23	47/23
6207.2	Napa River Light 34	LT EXT	18654	SF-0031-24	08/24
6240	Carquinez Strait Light 23	LT EXT	18656	SF-0008-23	02/23

6557	Suisun Bay Channel Light 24A	STRUCT DEST/TRLB	18656	SF-0134-23	36/23
6685	San Joaquin River Light 8	STRUCT DMGD/TRLB	18656	SF-0109-21	02/22
6760	San Joaquin River Light 25	MISSING/TRLB	18661	SF-0012-24	05/24
6760	San Joaquin River Light 25	OFF STA/TRLB	18661	SF-0034-24	09/24
6830	San Joaquin River Light 39	STRUCT DMGD	18661	SF-0119-23	30/23
6920	Stockton Channel Light 3	LT EXT	18661	SF-0019-24	06/24
7210	Sacramento River Deep Water Ship Channel Light 10	MISSING/TRLB	18656	SF-0101-21	32/21
7230	Sacramento River Deep Water Ship Channel Light 14	MISSING/TRLB	18661	SF-0140-23	39/23
7235	Sacramento River Deep Water Ship Channel Light 15	MISSING/TRLB	18661	SF-0100-20	42/23
7240	Sacramento River Deep Water Ship Channel Light 16	STRUCT DEST/TRLB	18661	SF-0127-18	34/18
7260	Sacramento River Deep Water Ship Channel Light 20	MISSING/TRLB	18661	SF-0108-21	05/23
7810	Bodega Harbor Channel Light 6	STRUCT DMGD/TRLB		SF-0028-21	08/23
7815	Bodega Harbor Channel Daybeacon 7	STRUCT DEST/TRLB		SF-0046-23	08/23
8130	Humboldt Bay Entrance Lighted Whistle Buoy HB	REDUCED INT	18620	HB-0013-23	46/23
8165	Humboldt Bay Entrance Range Front Light	LT EXT	18620	HB-0002-24	05/24
8195.1	Humboldt Bay Light 9	STRUCT DEST	18620	HB-0014-23	01/24
8390	Crescent City Harbor Range Front Light	LT IMCH	18603	HB-0004-24	07/24

DISCREPANCIES (FEDERAL AIDS) CORRECTED

LLNR	Aid Name	Status	Chart No.	BNM Ref.	LNM St	LNM End
355	Farallon Light	WATCHING PROPERLY	18640	SF-0033-24	09/24	09/24

DISCREPANCIES (PRIVATE AIDS)

LLNR	Aid Name	Status	Chart No.	BNM Ref.	LNM St	LNM End
20	Ocean Beach Pier Fog Sound Signal	SS INOP	18765	SD-0002-19	05/19	
158	Scripps Waverider Lighted Research Buoy 092	OFF STA	18746		45/18	
505	Scripps Waverider Lighted Research Buoy 168	LT EXT	18620	HB-0003-22	14/22	
1665	Americas Cup Harbor Daybeacon 2	STRUCT DEST/TRUB	18773	SD-0001-22	02/22	
1720	Navy San Diego Bay Mooring Buoy 19	LT EXT	18773	SD-0079-23	42/23	
2054	Sweetwater Channel Light 4	LT EXT	18773	SD-0019-24	02/24	
2056	Sweetwater Channel Light 6	LT EXT	18773	SD-0018-24	02/24	
2070	Coronado Cays Channel Daybeacon 3	STRUCT DEST	18773	SD-0098-17	36/17	
2090	Coronado Cays Channel Light 7	STRUCT DEST/TRUB	18773	SD-0046-22	31/22	
2159.1	Chula Vista Channel Shoal Light B	STRUCT DEST	18773	SD-0021-23	14/23	
2255	Chula Vista Channel Light 21	DAYMK MISSING	18773	SD-0017-24	03/24	
2288	Scripps Waverider Lighted Research Buoy 220	OFF STA	18765	SD-0041-20	30/20	
2289.1	Scripps Waverider Lighted Research Buoy 100	OFF STA	18765		22/20	
2289.4	Scripps "CORDC" Lighted Research Buoy	MISSING	18765		22/20	
2764.4	Catalina Sea Ranch SE Buoy	MISSING	18746	LA-0001-22	03/22	
2871	Long Beach Harbor Brusco Lighted Mooring Buoy	LT EXT	18749	LA-0009-21	03/21	
3337	King Harbor Channel Buoy 1	OFF STA	18744	LA-0028-24	07/24	
3338	King Harbor Channel Buoy 2	OFF STA	18744	LA-0028-24	07/24	
3339.2	REDONDO HARBOR LIGHT	LT EXT	18744	LA-0181-18	52/18	

3400	El Segundo NRG Energy Buoy 6ES	SINKING	18744	LA-0153-21	39/21
3420	Hyperion Lighted Gong Buoy 10 ES	LT EXT	18744		16/20
4401	Richardson Bay Daybeacon 8	DAYMK DMGD	18653		15/20
4480	San Francisco Bay Anchorage 6 Lighted Mooring Buoy A	MISSING	18650		46/23
4480.1	San Francisco Bay Anchorage 6 Lighted Mooring Buoy B	MISSING	18650		46/23
4576	South Beach Harbor North Entrance Light 2	LT EXT	18650	SF-0047-21	11/21
4577	South Beach Harbor North Entrance Light 1	LT EXT	18650	SF-0046-21	10/21
4578	South Beach Harbor South Entrance Light 1	LT EXT	18650	SF-0091-20	33/20
4827.1	San Francisco Bay Anchorage 9 Lighted Mooring Buoy A	LT EXT	18650	SF-0012-20	04/20
4828.1	San Francisco Bay Anchorage 9 Lighted Mooring Buoy B	MISSING	18650		39/23
5661	Southampton Shoal Outfall Lighted Buoy 1	SINKING/RAC INOP	18653	SF-0136-23	38/23
5662	Southampton Shoal Outfall Lighted Buoy 2	LT EXT	18653	SF-0059-21	14/21
5877.2	San Rafael Rock Quarry Mooring Buoy C	MISSING	18653		36/18
6623	New York Slough Koch West Light	LT IMCH			39/18
6624	New York Slough Koch East Light	LT EXT			39/18
6645.5	Delta Diablo Outfall Lighted Buoy	LT EXT		SF-0005-22	02/22
6677	Antioch Marina Entrance Light 1	LT IMCH	18656		18/23
6678	Antioch Marina Entrance Light 2	LT IMCH	18656		39/23
8325	Pacific Gas and Electric Dike Light	LT EXT		HB-0009-21	20/21
8591.1	Lake Tahoe NASA-JPL Lighted Research Buoy TB2	Status Unreported			37/22

DISCREPANCIES (PRIVATE AIDS) CORRECTED

LLNR	Aid Name	Status	Chart No.	BNM Ref.	LNM St	LNM End
------	----------	--------	-----------	----------	--------	---------

None

PLATFORM DISCREPANCIES

Name	Status	Position	BNM Ref.	LNM St	LNM End
------	--------	----------	----------	--------	---------

None

PLATFORM DISCREPANCIES CORRECTED

Name	Status	Position	BNM Ref.	LNM St	LNM End
------	--------	----------	----------	--------	---------

None

SECTION III - TEMPORARY CHANGES and TEMPORARY CHANGES CORRECTED

This section contains temporary changes and corrections to Aids to Navigation for this edition. When charted aids are temporarily relocated for dredging, testing, evaluation, or marking an obstruction, a temporary correction shall be listed in Section IV giving the new position.

TEMPORARY CHANGES

LLNR	Aid Name	Status	Chart No.	BNM Ref.	LNM St	LNM End
1571	Ballast Point Shoal Buoy	DISCONTINUED FOR DREDGING	18773	SD-0022-24	08/24	

TEMPORARY CHANGES CORRECTED

LLNR	Aid Name	Status	Chart No.	BNM Ref.	LNM St	LNM End
------	----------	--------	-----------	----------	--------	---------

None

PLATFORM TEMPORARY CHANGES

Name	Status	Position	BNM Ref.	LNM St	LNM End
None					

PLATFORM TEMPORARY CHANGES CORRECTED

Name	Status	Position	BNM Ref.	LNM St	LNM End
None					

SECTION IV - CHART CORRECTIONS

This section contains corrections to federally and privately maintained Aids to Navigation, as well as NOS corrections. This section contains corrective actions affecting chart(s). Corrections appear numerically by chart number, and pertain to that chart only. It is up to the mariner to decide which chart(s) are to be corrected. The following example explains individual elements of a typical chart correction.

Chart Number	Chart Edition	Edition Date	Last Local Notice to Mariners	Horizontal Datum Reference	Source of Correction	Current Local Notice to Mariners
12327	91st Ed.	19-APR-97	Last LNM: 26/97	NAD 83		27/97
Chart Title: NY-NJ-NEW YORK HARBOR - RARITAN RIVER						
Main Panel 2245 NEW YORK HARBOR						
(Temp)	ADD	NATIONAL DOCK CHANNEL BUOY 3			CGD01	at 40-41-09.001N 074-02-48.001W
	Corrective Action	Green can	Object of Corrective Action		Position	

(Temp) indicates that the chart correction action is temporary in nature. Courses and bearings are given in degrees clockwise from 000 true. Bearings of light sectors are toward the light from seaward. The nominal range of lights is expressed in nautical miles (NM) unless otherwise noted.

18602 **13th Ed.** **01-FEB-12** **Last LNM: 24/17** **NAD 83** **09/24**

Chart Title: **Pyramid Point to Cape Sebastian;Chetco Cove;Hunters Cove**

Main Panel 1802 **PYRAMID POINT TO CAPE SEBASTIAN. Page/Side: N/A**

LAST EDITION No new editions of chart 18602 will be published. It will be canceled on 31-Jul-24. Comparable or larger scale Electronic Navigational Chart (ENC) coverage is available. See "Cancellation of NOAA Paper and Raster Nautical Charts" in Section I of this LNM for details. A list of all canceled NOAA charts is at <https://www.charts.noaa.gov/MCD/Dole.shtml>. NOS --

18603 **17th Ed.** **01-MAR-11** **Last LNM: 44/08** **NAD 83** **09/24**

Chart Title: **St. George Reef and Crescent City Harbor;Crescent City Harbor**

Main Panel 1803 **ST. GEORGE REEF AND CRESCENT CITY HARBOR. Page/Side: N/A**

LAST EDITION No new editions of chart 18603 will be published. It will be canceled on 31-Jul-24. Comparable or larger scale Electronic Navigational Chart (ENC) coverage is available. See "Cancellation of NOAA Paper and Raster Nautical Charts" in Section I of this LNM for details. A list of all canceled NOAA charts is at <https://www.charts.noaa.gov/MCD/Dole.shtml>. NOS --

18623 **12th Ed.** **01-JAN-12** **Last LNM: 10/12** **NAD 83** **09/24**

Chart Title: **Cape Mendocino and vicinity**

Main Panel 1810 **CAPE MENDOCINO AND VICINITY. Page/Side: N/A**

LAST EDITION No new editions of chart 18623 will be published. It will be canceled on 31-Jul-24. Comparable or larger scale Electronic Navigational Chart (ENC) coverage is available. See "Cancellation of NOAA Paper and Raster Nautical Charts" in Section I of this LNM for details. A list of all canceled NOAA charts is at <https://www.charts.noaa.gov/MCD/Dole.shtml>. NOS --

18649 **68th Ed.** **01-JUN-13** **Last LNM: 16/20** **NAD 83** **09/24**

Chart Title: **Entrance to San Francisco Bay**

Main Panel 1823 **SAN FRANCISCO ENTRANCE. Page/Side: N/A**

LAST EDITION No new editions of chart 18649 will be published. It will be canceled on 31-Jul-24. Comparable or larger scale Electronic Navigational Chart (ENC) coverage is available. See "Cancellation of NOAA Paper and Raster Nautical Charts" in Section I of this LNM for details. A list of all canceled NOAA charts is at <https://www.charts.noaa.gov/MCD/Dole.shtml>. NOS --

18650	58th Ed.	01-JAN-17	Last LNM: 09/21	NAD 83	09/24
<i>ChartTitle: San Francisco Bay Candlestick Point to Angel Island</i>					
Main Panel 1824 SAN FRANCISCO BAY CANDLESTICK POINT TO ANGEL ISLAND. Page/Side: A					
NOS					
LAST EDITION No new editions of chart 18650 will be published. It will be canceled on 31-Jul-24. Comparable or larger scale Electronic Navigational Chart (ENC) coverage is available. See "Cancellation of NOAA Paper and Raster Nautical Charts" in Section I of this LNM for details. A list of all canceled NOAA charts is at https://www.charts.noaa.gov/MCD/Dole.shtml .					
--					
18653	12th Ed.	01-OCT-12	Last LNM: 16/20	NAD 83	09/24
<i>ChartTitle: San Francisco Bay-Angel Island to Point San Pedro</i>					
Main Panel 1939 SAN FRANCISCO BAY ANGEL ISLAND TO POINT SAN PEDRO. Page/Side: N/A					
NOS					
LAST EDITION No new editions of chart 18653 will be published. It will be canceled on 31-Jul-24. Comparable or larger scale Electronic Navigational Chart (ENC) coverage is available. See "Cancellation of NOAA Paper and Raster Nautical Charts" in Section I of this LNM for details. A list of all canceled NOAA charts is at https://www.charts.noaa.gov/MCD/Dole.shtml .					
--					
18654	45th Ed.	01-JAN-11	Last LNM: 09/21	NAD 83	09/24
<i>ChartTitle: San Pablo Bay</i>					
Main Panel 1846 SAN PABLO BAY. Page/Side: N/A					
NOS					
LAST EDITION No new editions of chart 18654 will be published. It will be canceled on 31-Jul-24. Comparable or larger scale Electronic Navigational Chart (ENC) coverage is available. See "Cancellation of NOAA Paper and Raster Nautical Charts" in Section I of this LNM for details. A list of all canceled NOAA charts is at https://www.charts.noaa.gov/MCD/Dole.shtml .					
--					
18655	59th Ed.	01-OCT-06	Last LNM: 09/21	NAD 83	09/24
<i>ChartTitle: Mare Island Strait</i>					
Main Panel 2914 MARE ISLAND STRAIT. Page/Side: N/A					
NOS					
LAST EDITION No new editions of chart 18655 will be published. It will be canceled on 31-Jul-24. Comparable or larger scale Electronic Navigational Chart (ENC) coverage is available. See "Cancellation of NOAA Paper and Raster Nautical Charts" in Section I of this LNM for details. A list of all canceled NOAA charts is at https://www.charts.noaa.gov/MCD/Dole.shtml .					
--					
18656	56th Ed.	01-AUG-10	Last LNM: 09/21	NAD 83	09/24
<i>ChartTitle: Suisun Bay</i>					
Main Panel 1849 SUISUN BAY. Page/Side: N/A					
NOS					
LAST EDITION No new editions of chart 18656 will be published. It will be canceled on 31-Jul-24. Comparable or larger scale Electronic Navigational Chart (ENC) coverage is available. See "Cancellation of NOAA Paper and Raster Nautical Charts" in Section I of this LNM for details. A list of all canceled NOAA charts is at https://www.charts.noaa.gov/MCD/Dole.shtml .					
--					
18658	31st Ed.	01-SEP-07	Last LNM: 30/19	NAD 83	09/24
<i>ChartTitle: SUISUN BAY-Roe Island and vicinity</i>					
Main Panel 1851 SUISUN BAY ROE ISLAND AND VICINITY. Page/Side: N/A					
NOS					
LAST EDITION No new editions of chart 18658 will be published. It will be canceled on 31-Jul-24. Comparable or larger scale Electronic Navigational Chart (ENC) coverage is available. See "Cancellation of NOAA Paper and Raster Nautical Charts" in Section I of this LNM for details. A list of all canceled NOAA charts is at https://www.charts.noaa.gov/MCD/Dole.shtml .					
--					
18661	30th Ed.	01-MAR-09	Last LNM: 22/20	NAD 83	09/24
<i>ChartTitle: Sacramento and San Joaquin Rivers Old River, Middle River and San Joaquin River extension; Sherman Island</i>					
Main Panel 1855 SACRAMENTO AND SAN JOAQUIN RIVERS. Page/Side: B					
NOS					
LAST EDITION No new editions of chart 18661 will be published. It will be canceled on 31-Jul-24. Comparable or larger scale Electronic Navigational Chart (ENC) coverage is available. See "Cancellation of NOAA Paper and Raster Nautical Charts" in Section I of this LNM for details. A list of all canceled NOAA charts is at https://www.charts.noaa.gov/MCD/Dole.shtml .					
--					

18662	22nd Ed.	01-MAY-09	Last LNM: 09/21	NAD 83	09/24
<i>ChartTitle: Sacramento River Andrus Island to Sacramento</i>					
Main Panel 1857 SACRAMENTO RIVER ANDRUS ISLAND TO SACRAMENTO. Page/Side: N/A					
				NOS	
LAST EDITION	No new editions of chart 18662 will be published. It will be canceled on 31-Jul-24. Comparable or larger scale Electronic Navigational Chart (ENC) coverage is available. See "Cancellation of NOAA Paper and Raster Nautical Charts" in Section I of this LNM for details. A list of all canceled NOAA charts is at https://www.charts.noaa.gov/MCD/Dole.shtml .				--
18663	6th Ed.	01-APR-06	Last LNM: 30/19	NAD 83	09/24
<i>ChartTitle: San Joaquin River Stockton Deep Water Channel Medford Island to Stockton</i>					
Main Panel 1945 SAN JOAQUIN RIVER MEDFORD ISLAND TO STOCKTON. Page/Side: N/A					
				NOS	
LAST EDITION	No new editions of chart 18663 will be published. It will be canceled on 31-Jul-24. Comparable or larger scale Electronic Navigational Chart (ENC) coverage is available. See "Cancellation of NOAA Paper and Raster Nautical Charts" in Section I of this LNM for details. A list of all canceled NOAA charts is at https://www.charts.noaa.gov/MCD/Dole.shtml .				--
18664	12th Ed.	26-AUG-00	Last LNM: 15/08	NAD 83	09/24
<i>ChartTitle: Sacramento River Sacramento to Fourmile Bend</i>					
Main Panel 1860 SACRAMENTO RIVER SACRAMENTO TO FOURMILE BEND. Page/Side: A					
				NOS	
LAST EDITION	No new editions of chart 18664 will be published. It will be canceled on 31-Jul-24. Comparable or larger scale Electronic Navigational Chart (ENC) coverage is available. See "Cancellation of NOAA Paper and Raster Nautical Charts" in Section I of this LNM for details. A list of all canceled NOAA charts is at https://www.charts.noaa.gov/MCD/Dole.shtml .				--
18685	34th Ed.	01-SEP-12	Last LNM: 33/16	NAD 83	09/24
<i>ChartTitle: Monterey Bay;Monterey Harbor;Moss Landing Harbor;Santa Cruz Small Craft Harbor</i>					
Main Panel 1868 MONTEREY BAY. Page/Side: N/A					
				NOS	
LAST EDITION	No new editions of chart 18685 will be published. It will be canceled on 31-Jul-24. Comparable or larger scale Electronic Navigational Chart (ENC) coverage is available. See "Cancellation of NOAA Paper and Raster Nautical Charts" in Section I of this LNM for details. A list of all canceled NOAA charts is at https://www.charts.noaa.gov/MCD/Dole.shtml .				--
18703	26th Ed.	01-MAR-13	Last LNM: 05/21	NAD 83	09/24
<i>ChartTitle: Estero Bay;Morro Bay</i>					
Main Panel 1877 ESTERO BAY. Page/Side: N/A					
				NOS	
LAST EDITION	No new editions of chart 18703 will be published. It will be canceled on 31-Jul-24. Comparable or larger scale Electronic Navigational Chart (ENC) coverage is available. See "Cancellation of NOAA Paper and Raster Nautical Charts" in Section I of this LNM for details. A list of all canceled NOAA charts is at https://www.charts.noaa.gov/MCD/Dole.shtml .				--
18724	3rd Ed.	01-JUN-13	Last LNM: 17/09	NAD 83	09/24
<i>ChartTitle: Port Hueneme And Approaches;Port Hueneme</i>					
Inset 1882 PORT HUENEME. Page/Side: N/A					
				NOS	
LAST EDITION	No new editions of chart 18724 will be published. It will be canceled on 31-Jul-24. Comparable or larger scale Electronic Navigational Chart (ENC) coverage is available. See "Cancellation of NOAA Paper and Raster Nautical Charts" in Section I of this LNM for details. A list of all canceled NOAA charts is at https://www.charts.noaa.gov/MCD/Dole.shtml .				--
18725	31st Ed.	01-OCT-20	Last LNM: 30/20	NAD 83	09/24
<i>ChartTitle: Port Hueneme to Santa Barbara;Santa Barbara;Channel Islands Harbor and Port Hueneme;Ventura</i>					
Main Panel 1884 PORT HUENEME TO SANTA BARBARA - -. Page/Side: -					
				NOS	
LAST EDITION	No new editions of chart 18725 will be published. It will be canceled on 31-Jul-24. Comparable or larger scale Electronic Navigational Chart (ENC) coverage is available. See "Cancellation of NOAA Paper and Raster Nautical Charts" in Section I of this LNM for details. A list of all canceled NOAA charts is at https://www.charts.noaa.gov/MCD/Dole.shtml .				--
18728	9th Ed.	01-NOV-04	Last LNM: 51/18	NAD 83	09/24
<i>ChartTitle: Santa Cruz Channel</i>					

Main Panel 1890 SANTA CRUZ CHANNEL. Page/Side: N/A

LAST EDITION No new editions of chart 18728 will be published. It will be canceled on 31-Jul-24. Comparable or larger scale Electronic Navigational Chart (ENC) coverage is available. See "Cancellation of NOAA Paper and Raster Nautical Charts" in Section I of this LNM for details. A list of all canceled NOAA charts is at <https://www.charts.noaa.gov/MCD/Dole.shtml>.
NOS -- --

18729 13th Ed. 01-OCT-05 Last LNM: 49/18 NAD 83 09/24
ChartTitle: Anacapa Passage;Prisoners Harbor

Main Panel 1891 ANACAPA PASSAGE. Page/Side: N/A

LAST EDITION No new editions of chart 18729 will be published. It will be canceled on 31-Jul-24. Comparable or larger scale Electronic Navigational Chart (ENC) coverage is available. See "Cancellation of NOAA Paper and Raster Nautical Charts" in Section I of this LNM for details. A list of all canceled NOAA charts is at <https://www.charts.noaa.gov/MCD/Dole.shtml>.
NOS -- --

18744 33rd Ed. 01-AUG-10 Last LNM: 16/09 NAD 83 09/24
ChartTitle: Santa Monica Bay;King Harbor

Main Panel 1894 SANTA MONICA BAY. Page/Side: N/A

LAST EDITION No new editions of chart 18744 will be published. It will be canceled on 31-Jul-24. Comparable or larger scale Electronic Navigational Chart (ENC) coverage is available. See "Cancellation of NOAA Paper and Raster Nautical Charts" in Section I of this LNM for details. A list of all canceled NOAA charts is at <https://www.charts.noaa.gov/MCD/Dole.shtml>.
NOS -- --

18746 40th Ed. 01-JAN-17 Last LNM: 10/21 NAD 83 09/24
ChartTitle: San Pedro Channel;Dana Point Harbor

Main Panel 1897 SAN PEDRO CHANNEL. Page/Side: A

LAST EDITION No new editions of chart 18746 will be published. It will be canceled on 05-Jun-24. Comparable or larger scale Electronic Navigational Chart (ENC) coverage is available. See "Cancellation of NOAA Paper and Raster Nautical Charts" in Section I of this LNM for details. A list of all canceled NOAA charts is at <https://www.charts.noaa.gov/MCD/Dole.shtml>.
NOS -- --

18749 44th Ed. 01-OCT-15 Last LNM: 21/09 NAD 83 09/24
ChartTitle: San Pedro Bay;Anaheim Bay Huntington Harbor

Main Panel 1902 SAN PEDRO BAY. Page/Side: A

LAST EDITION No new editions of chart 18749 will be published. It will be canceled on 31-Jul-24. Comparable or larger scale Electronic Navigational Chart (ENC) coverage is available. See "Cancellation of NOAA Paper and Raster Nautical Charts" in Section I of this LNM for details. A list of all canceled NOAA charts is at <https://www.charts.noaa.gov/MCD/Dole.shtml>.
NOS -- --

18757 11th Ed. 01-SEP-04 Last LNM: 06/08 NAD 83 09/24
ChartTitle: Santa Catalina Island;Avalon Bay;Catalina Harbor;Isthmus Cove

Main Panel 1910 SANTA CATALINA ISLAND. Page/Side: N/A

LAST EDITION No new editions of chart 18757 will be published. It will be canceled on 31-Jul-24. Comparable or larger scale Electronic Navigational Chart (ENC) coverage is available. See "Cancellation of NOAA Paper and Raster Nautical Charts" in Section I of this LNM for details. A list of all canceled NOAA charts is at <https://www.charts.noaa.gov/MCD/Dole.shtml>.
NOS -- --

18758 8th Ed. 01-MAR-17 Last LNM: 06/12 NAD 83 09/24
ChartTitle: Del Mar Boat Basin

Main Panel 1912 DEL MAR BOAT BASIN CAMP JOSEPH H. PENDLETON CALIFORNIA - -. Page/Side: -

LAST EDITION No new editions of chart 18758 will be published. It will be canceled on 31-Jul-24. Comparable or larger scale Electronic Navigational Chart (ENC) coverage is available. See "Cancellation of NOAA Paper and Raster Nautical Charts" in Section I of this LNM for details. A list of all canceled NOAA charts is at <https://www.charts.noaa.gov/MCD/Dole.shtml>.
NOS -- --

18765 17th Ed. 01-NOV-10 Last LNM: 10/20 NAD 83 09/24
ChartTitle: Approaches to San Diego Bay;Mission Bay

Main Panel 1917 APPROACHES TO SAN DIEGO BAY. Page/Side: N/A

NOS

LAST EDITION No new editions of chart 18765 will be published. It will be canceled on 05-Jun-24. Comparable or larger scale Electronic Navigational Chart (ENC) coverage is available. See "Cancellation of NOAA Paper and Raster Nautical Charts" in Section I of this LNM for details. A list of all canceled NOAA charts is at <https://www.charts.noaa.gov/MCD/Dole.shtml>. -- --

18772 **48th Ed.** **01-DEC-05** **Last LNM: 10/20** **NAD 83** **09/24**
ChartTitle: Approaches to San Diego Bay
Main Panel 1919 APPROACHES TO SAN DIEGO BAY. Page/Side: N/A

LAST EDITION No new editions of chart 18772 will be published. It will be canceled on 31-Jul-24. Comparable or larger scale Electronic Navigational Chart (ENC) coverage is available. See "Cancellation of NOAA Paper and Raster Nautical Charts" in Section I of this LNM for details. A list of all canceled NOAA charts is at <https://www.charts.noaa.gov/MCD/Dole.shtml>. -- --

18773 **43rd Ed.** **01-MAY-12** **Last LNM: 10/20** **NAD 83** **09/24**
ChartTitle: San Diego Bay
Main Panel 1920 SAN DIEGO BAY. Page/Side: N/A

LAST EDITION No new editions of chart 18773 will be published. It will be canceled on 31-Jul-24. Comparable or larger scale Electronic Navigational Chart (ENC) coverage is available. See "Cancellation of NOAA Paper and Raster Nautical Charts" in Section I of this LNM for details. A list of all canceled NOAA charts is at <https://www.charts.noaa.gov/MCD/Dole.shtml>. -- --

18774 **12th Ed.** **01-JUL-11** **Last LNM: 10/21** **NAD 83** **09/24**
ChartTitle: Gulf of Santa Catalina;Delmar Boat Basin-Camp Pendleton
Main Panel 1922 GULF OF SANTA CATALINA. Page/Side: N/A

LAST EDITION No new editions of chart 18774 will be published. It will be canceled on 05-Jun-24. Comparable or larger scale Electronic Navigational Chart (ENC) coverage is available. See "Cancellation of NOAA Paper and Raster Nautical Charts" in Section I of this LNM for details. A list of all canceled NOAA charts is at <https://www.charts.noaa.gov/MCD/Dole.shtml>. -- --

SECTION V - ADVANCE NOTICES

This section contains advance notice of approved projects, changes to aids to navigation, or upcoming temporary changes such as dredging, etc. Mariners are advised to use caution while transiting these areas.

SUMMARY OF ADVANCED APPROVED PROJECTS

<u>Approved Project(s)</u>	<u>Project Date</u>	<u>Ref. LNM</u>
None		

Advance Notice(s)

CALIFORNIA-REPLACING SAFE WATER BUOYS WITH V-AIS-BUOY DISESTABLISHMENT

The U.S. Coast Guard will be removing the following Safe Water Buoys and will be replacing them with Virtual AIS (V-AIS) Aids to Navigation:

- LLNR 455 - Noyo Approach Lighted Whistle Buoy NA
- LLNR 2435 - Newport Harbor Entrance Lighted Bell Buoy NWP
- LLNR 3010 - Long Beach Channel Approach Lighted Whistle Buoy LB
- LLNR 3840 - Morro Bay Approach Lighted Whistle Buoy MB
- LLNR 490 - Humboldt Bay Entrance Lighted Whistle Buoy HB
- LLNR 10 - San Diego Bay Approach Lighted Whistle Buoy SD

Direct any questions, comments, or feedback no later than 27 March, 2024 to LTJG Samantha Hu at 206-827-3518 or Samantha.G.Koval@uscg.mil.

Charts: 18600 18620 18640 18680 18700 18740 LNM: 05/24

CALIFORNIA-SAN FRANCISCO TO SAN DIEGO-REMOVAL OF RACONS ON AIDS TO NAVIGATION

The U.S. Coast Guard will be removing the RACONS from aids to navigation located along the California Coast due to the consistent failure of the signals and that they are no longer considered necessary for safe navigation of the waterways. While there is no specific timeline for the removal of this equipment, it will be coordinated with servicing and discrepancy responses. The removal of the RACONS will be announced by Broadcast Notice to Mariners and published in the Local Notice to Mariners as Chart and Light List corrections. These aids to navigation are:

- Harding Rock Lighted Buoy HR (LLNR 4330): 37-50-17.661N 122-26-45.579W
- Los Angeles Approach Channel Lighted Whistle Buoy 3 (LLNR 3107): 33-41-16.012N 118-14-24.050W
- San Francisco Approach Lighted Whistle Buoy SF (LLNR 360): 37-44-59.761N 122-41-33.995W
- Long Beach Channel Approach Lighted Whistle Buoy LB (LLNR 3010): 33-41-24.013N 118-11-01.050W

Mariners are requested to respond in writing to the Coast Guard District office with any comments on this change at D11-SMB-D11-LNM@uscg.mil. Any discrepancy for these or other Aids to Navigation should continue to be reported to the closest US Coast Guard Sector.

Charts: 18007 18010 18022 18640 18649 18650 18680 18746 18749 18765 18772 LNM: 33/23

NORTHERN CALIFORNIA-HUMBOLDT-SOUND SIGNAL DEVICE CHANGE

The U.S. Coast Guard will be permanently discontinuing the sound signal on the following Aids to Navigation:

Crescent City Harbor Lighted Whistle Buoy 2 (LLNR 545)

Crescent City Harbor Lighted Whistle Buoy 4 (LLNR 8365)

Humboldt Bay Lighted Bell Buoy 2 (LLNR 8135)

Turtle Rocks Bell Buoy 44 (LLNR 535)

Please direct questions, comments, or concerns no later than 22 March, 2024 to LTJG Samantha Hu at 510-437-2983 or Samantha.G.Koval@uscg.mil.

Charts: 18600 18620

LNLM: 05/24

NORTHERN CALIFORNIA-MONTEREY-MONTEREY HARBOR LIGHT 6

The U.S. Coast Guard will be permanently disestablishing the sound signal on Monterey Harbor Light 6 (LLNR 3970). The aid is in position: 36-36-30N 121-53-22W. Direct any questions comments or feedback no later than 13 March, 2024 to LTJG Samantha Hu at (206) 827-3518 or Samantha.G.Koval@uscg.mil.

Charts: 18680 18685

LNLM: 03/24

NORTHERN CALIFORNIA-SAN FRANCISCO-SOUND SIGNAL DEVICE CHANGE

The U.S. Coast Guard is permanently discontinuing the sound signal on the following Aids to Navigation:

Alameda Naval Air Station Channel Entrance Lighted Bell Buoy 1 (LLNR 4745)

Alcatraz Lighted Bell Buoy AZ (LLNR 4310)

Pillar Point Harbor Entrance Lighted Bell Buoy 3 (LLNR 4140)

San Francisco Main Ship Channel Lighted Bell Buoy 7 (LLNR 4190)

Pillar Point Harbor Entrance Lighted Gong Buoy 1 (LLNR 4130)

Please direct questions, comments, or concerns no later than 22 March, 2024 to LTJG Samantha Hu at 510-437-2983 or Samantha.G.Koval@uscg.mil.

Charts: 18640 18680

LNLM: 05/24

SOUTHERN CALIFORNIA-LOS ANGELES TO MORRO BAY-SOUND SIGNAL DEVICE CHANGE

The U.S. Coast Guard will be permanently discontinuing the sound signal on the following Aid to Navigation:

Mouse Rock Bell Buoy 3MR (LLNR 3955)

Please direct questions, comments, or concerns no later than 22 March, 2024 to LTJG Samantha Hu at 510-437-2983 or Samantha.G.Koval@uscg.mil.

Charts: 18700 18720 18740

LNLM: 05/24

SECTION VI - PROPOSED CHANGES

Periodically, the Coast Guard evaluates its system of aids to navigation to determine whether the conditions for which the aids to navigation were established have changed. When changes occur, the feasibility of improving, relocating, replacing, or discontinuing aids are considered. This section contains notice(s) of non-approved, proposed projects open for comment. SPECIAL NOTE: Mariners are requested to respond in writing to the District office unless otherwise noted (see banner page for address).

PROPOSED WATERWAY PROJECTS OPEN FOR PUBLIC COMMENT

Proposed Project(s)

Closing

Docket No.

Ref. LNM

None

Proposed Change Notice(s)

CALIFORNIA-REPLACING SAFE WATER BUOYS WITH V-AIS- PROPOSED CHANGE

The U.S. Coast Guard is proposing to remove the following Safe Water Buoys and replace them with Virtual AIS (V-AIS) Aid to Navigation:

- Los Angeles Approach Channel Lighted Whistle Buoy 3 - LLNR 3107
- Long Beach Channel Approach Lighted Whistle Buoy LB – LLNR 3010
- Redondo Harbor Entrance Lighted Bell Buoy RB – LLNR 3325
- Oceanside Approach Lighted Whistle Buoy OC – LLNR 2290
- Tomales Bay Outside Bar Gong Buoy TB – LLNR 8025
- Santa Barbara Harbor Lighted Bell Buoy SB – LLNR 3755
- Arena Cove Lighted Bell Buoy A – LLNR 415
- Bodega Harbor Approach Lighted Gong Buoy BA – LLNR 7765
- Port Hueneme Entrance Lighted Whistle Buoy PH – LLNR 3595
- Santa Cruz Lighted Whistle Buoy SC – LLNR 4080

Mendocino Bay Whistle Buoy MB – LLNR 440
Little River Bell Buoy LR – LLNR 435
Albion River Lighted Whistle Buoy AR – LLNR 430
Pillar Point Harbor Approach Lighted Buoy PP – LLNR 330

Direct any questions, comments, or feedback no later than 08 March, 2024 to LTJG Samantha Hu at 206-827-3518 or Samantha.G.Koval@uscg.mil.

Charts: 18640 18680 18700 18720 18740

LNM: 02/24

NORTHERN CALIFORNIA-SAN FRANCISCO-HUMBLODT BAY-SOUND SIGNAL DEVICE CHANGE

The U.S. Coast Guard is proposing to permanently discontinue the sound signal on the following Aids to Navigation:

Oakland Harbor Bar Channel Lighted Bell Buoy 1 (LLNR 4605)

Crescent City Harbor Lighted Bell Buoy 6 (LLNR 8375)

Please direct questions, comments, or concerns no later than 13 March, 2024 to LTJG Samantha Hu at 510-437-2983 or Samantha.G.Koval@uscg.mil.

Charts: 18603 18653

LNM: 03/24

SECTION VII - GENERAL

This section contains information of general concern to the Mariners. Mariners are advised to use caution while transiting these areas.

ANNOUNCEMENT – U.S. Coast Pilot® 7 and U.S. Coast Pilot® -NEW EDITIONS-Spring 2023

PUBLICATION–National Oceanic Atmospheric Administration (NOAA) – U.S. Coast Pilot 7, Pacific Coast:

California, 55th Edition, 2023, has been issued and is ready for free download and weekly updates at

www.nauticalcharts.noaa.gov/publications/coast-pilot/index.html.

Only Print-on-Demand (POD) bound copies are available for purchase; visit nauticalcharts.noaa.gov/publications/print-agents.html#coast-pilot.

The 2023 Edition cancels the preceding 2022 Edition, and incorporates all previous corrections.

LNM: 22/23

ARIZONA/NEVADA-COLORADO RIVER-BRIDGE

NEW LAUGHLIN-BULLHEAD CITY BRIDGE- The new bridge, in approximate position 35-03-17N 114-36-45W, completely spans the waterway. Work continues Monday through Friday, 0630 to 1430. The center span of the bridge provides 30 ft of vertical clearance at ordinary high water and is lighted on the upstream and downstream sides with green center channel lights. For on-site conditions contact 702-455-6030 or 702-817-7088, or 702-286-0137. For further information contact the Coast Guard Bridge Office at 510- 437-3515.

LNM: 02/24

CALIFORNIA-USCG-NEW MECHANIC MARINER CREDENTIAL

The U.S. Coast Guard announced a new merchant mariner credential (MMC) set to launch on March 1, 2024. This milestone marks the first comprehensive revision of the mariner credential in nearly a decade and is strategically designed to enhance both quality of service and security within the Marine Transportation System (MTS). U.S. Coast Guard Marine Safety Information Bulletin (MSIB) 01-24, New Merchant Mariner Credential Passport Booklet Replacement, has been posted on the DCO's MSIB Site and announced at the National Maritime Center (CG-NMC) Home Page (uscg.mil). Please visit these resources for more information on the credential.

LNM: 09/24

LOWER COLORADO RIVER-LAKE HAVASU, AZ–MARINE EVENT

3 Disciplines will be sponsoring the Lake Havasu Triathlon on Sunday, 17 March, 2024 from 5:30am to 10:30am. The event will involve approximately 350 swimmers racing on a course starting at Lake Havasu State Park Beach, down Bridgewater Channel and returning to Lake Havasu State Park Beach. A special local regulation (SLR) will be established for this event. Non-participants will be prohibited from entering the event while the SLR is in effect. Mariners are requested to transit the area with caution. For more details or comments, contact Kenny Krell at 810-965-5460.

LNM: 09/24

LOWER COLORADO RIVER-LAKE HAVASU-MARINE EVENT

RPM Racing Enterprises will be sponsoring the Best of the West Series Kickoff personal watercraft (PWC) race on 15-17 March, 2024 from 6:00am until 6:00pm each day. The event will involve approximately 150 participants racing on a closed course in the vicinity of Blue Water Resort and Casino. Mariners are requested to transit the area with caution. For more details or comments, contact Ross Wallach at 310-318-4012.

LNM: 08/24

LOWER COLORADO RIVER-LAKE HAVASU-MARINE EVENT

The Lake Havasu Yacht Club will be sponsoring the McCulloch Cup Regatta on 16-17 March, 2024. The event will involve approximately 20 sailing catamarans racing on a course in North Lake Havasu from 11:00am to 4:00pm each day. Mariners are advised to exercise caution while transiting the area. For more details or comments, contact Rex Miller at 760-801-4968.

LNM: 02/24

LOWER COLORADO RIVER-LAUGHLIN NV TO LAKE HAVASU CITY AZ -MARINE EVENT

Dangie Bros, INC. will be sponsoring the Boat Train event from 15-19 March, 2024. The event will consist of five houseboats interconnected creating one continuous vessel starting from Laughlin NV and ending in Lake Havasu City AZ. Mariners are requested to transit the area with caution. For more details or comments, contact Marlena Muro at 909-763-8855.

LNM: 06/24

LOWER COLORADO RIVER-PARKER, AZ-MARINE EVENT

International Water Ski Racing Association will be sponsoring the International Open Water Ski Race from 8-10 March, 2024 from 7:00am to 5:00pm each day. The event will involve approximately 30 vessels pulling water-skiers on a closed course in the vicinity of the Blue Water Resort & Casino. Mariners are requested to transit the area with caution. For more details or comments, contact Brian Vesely at 982-208-2263.

LNM: 06/24

LOWER COLORADO RIVER-PARKER, AZ-MARINE EVENT

The Arizona Dragboat Association will be sponsoring the ADBA March Mayhem marine event from 8-10 March, 2024. The event will consist of approximately 100 total vessels racing on a course near La Paz County Park from 8:00am to 5:00pm each day. Mariners are requested to transit the area with caution. For more details or comments, contact Jeremy Denny at 602-614-0560.

LNM: 02/24

NORTHERN CALIFORNIA-ACKER ISLAND-MARINE OPERATIONS

Dutra is conducting marine operations for the material placement and debris removal occurring at Lost Isle Resort on Acker Island from 15 February, 2024 until 30 April, 2024. CB TM20 equipped with a Bucyrus-Erie 88b Excavator along with a TB will be utilized on the project and will be monitoring CHF-FM Chan. 9, 16, & 68A. The crane barge will be spudded in with flashers on all corners along with all other marine equipment. Mariners are requested to transit the area with caution. For more details or comments contact Lucas Dutra at 707-378-3822.

Chart 18661

LNM: 06/24

NORTHERN CALIFORNIA-ALCATRAZ ISLAND-MARINE CONSTRUCTION

Manson Construction Co. will be conducting marine construction to the wharf at Alcatraz Island at 37-49-36N 122-25-15W. Construction will begin on 23 January, 2023 and be completed on 04 October, 2025. During construction DB HAGAR will be utilizing divers during low tide. Tug WESTAR will be assisting DB HAGAR and monitoring VHF-FM Chan. 13 and 16. Mariners are requested to transit the area with caution. For more details or comments contact Matt Lehmann at 510-529-1583.

Chart 18653

LNM: 50/22

NORTHERN CALIFORNIA-BENICIA-DREDGING OPERATIONS

The Dutra Group will be conducting dredging operations from 15-29 February, 2024 operating 24 hours a day, 7 days a week at the Valero Refinery 38-02-52N 122-07-54W. The clamshell dredge DB 24, tow tug LASSEN and tender tug BECKY T will be monitoring VHF-FM Chan. 13, 14 & 80. Mariners are requested to transit the area with caution. For more details or comments contact Chris Milam at 415-218-6739.

Chart 18656

LNM: 07/24

NORTHERN CALIFORNIA-CARQUINEZ STRAIT-BRIDGE

BENICIA-MARTINEZ (UP) RAIL BRIDGE-The westside north pier red fender light is extinguished. Estimated time of repair is unknown. For further information contact the Coast Guard Bridge Office by telephone at 510-437-3514 or by email at D11-SG-M-DPW-Bridges@uscg.mil.

Chart 18656

LNM: 47/23

NORTHERN CALIFORNIA-CARQUINEZ STRAIT-BRIDGE

BENICIA-MARTINEZ (UP) RAIL BRIDGE-Union Pacific Railroad is requesting to secure the lift span of the bridge in the closed-to-navigation position from 8:00am to 5:00pm from 19-22 March, 2024 to replace two uphaul wire ropes. During the work, the bridge will not be able to open for any reason. In the closed-to-navigation position, the bridge provides 70' of vertical clearance at Mean High Water. Vessels able to transit the bridge while closed can continue to do so at any time. If you wish to comment on this proposed work, please do so via email at D11-SG-M-DPW-Bridges@uscg.mil or via phone at 571-607-2207 by COB on 8 March, 2024.

Chart 18656

LNM: 08/24

NORTHERN CALIFORNIA-CHINA BASIN-BRIDGE

THIRD STREET BRIDGE-The east side red/green bascule light is extinguished due to sidewalk repairs. Estimated time to reenergize the light is 11 March, 2024. For further information contact the Coast Guard Bridge Office at 510-219-4366.

Chart 18649

LNM: 03/24

NORTHERN CALIFORNIA-DELTA & RIVERS-AMERICAN RIVER-BRIDGE

CAPITAL CITY HWY (Route 51) BRIDGE-Caltrans is conducting rehabilitation of the bridge until 27 June, 2025. Work will be conducted during daylight hours, 7am to 5:30pm, Monday through Friday, and will include the use of barges, work boats, tugboats, turbidity curtains, and access piers. (See AmRiv_SiltCurtain_BargeLocation.pdf in the enclosure section.). During the workday, barges can be moved for the safety of navigation with one hour notice to the contractor via VHF-FM CH 16 or by cell at 916-532-8208. Mariners should contact the contractor before transiting the bridge to determine location of turbidity curtains. Barges will be unmanned and moored at their work locations overnight. Each corner of each barge will be lighted at night with steady burning red lights. At least 25 feet of horizontal clearance for navigation will be available at all times. Mariners are requested to transit the area with caution. For further information, contact the Coast Guard Bridge Office at 510-437-3461.

Chart 18662

LNM: 23/22

NORTHERN CALIFORNIA-DELTA & RIVERS-GEORGIANA SLOUGH-BRIDGE

TYLER ISLAND BRIDGE-The north side swing span red dolphin light is extinguished. Estimated time of repair is unknown. For further information contact the Coast Guard Bridge Office at 510-437-3514.

Chart 18661

LNM: 09/24

NORTHERN CALIFORNIA-DELTA & RIVERS-MIDDLE RIVER-BRIDGE

CA ROUTE 4-The downriver northeast dolphin has been partially removed, exposing the center steel pile of the dolphin. There is no protection around the steel pile. A red light is mounted atop the steel pile. Mariners are urged to transit the area with caution. For further information contact the Coast Guard Bridge Office at 510-437-3516.

Chart 18661

LNM: 44/23

NORTHERN CALIFORNIA-DELTA & RIVERS-MOKELUMNE RIVER-BRIDGE

NORTHERN CALIFORNIA-DELTA & RIVERS-MOKELUMNE RIVER-BRIDGE

MILLER'S FERRY BRIDGE-The red lights on the upstream and downstream east side dolphins are extinguished. The red light on the northernmost swing span dolphin is extinguished. Estimated time of repair is unknown. For further information contact the Coast Guard Bridge Office at 510-437-3514.

Chart 18661

LNM: 09/24

NORTHERN CALIFORNIA-DELTA & RIVERS-NAPA RIVER-BRIDGE

HIGHWAY 37 BRIDGE-Repairs to the damaged east and west side fenders will take place Monday through Friday, during daylight hours, 01 Nov, 2023 through 01 May, 2024. The 188' X 60' crane barge "MORTY" or "KELSO" will be on-site along with the tug "PHYLLIS T" or "BECKY T" and will be moored, with anchors and spuds, in the channel span at various times, upstream and downstream of the bridge, temporarily reducing horizontal clearance of the bridge. During the workday, the barge can be moved for navigational safety if at least a two-hour notice is given to the tug via VHF-FM Channel 13, 14, or 16 or via cell phone at 415-686-9397. After normal working hours, the tug and barge will be moored off-site and the channel span of the bridge will be clear. After hours mariners can call 415-300-5336 or 415-686-3938 to report any discrepancies at the work site. For further information mariners can contact the Coast Guard Bridge Office at 510-437-3461.

Chart 18654

LNM: 42/23

NORTHERN CALIFORNIA-DELTA & RIVERS-OLD RIVER-BRIDGE

CA ROUTE 4 BRIDGE- Critical bridge rehabilitation is taking place 7am-3:30pm, Monday through Friday. Caltrans is anticipating a 30 April, 2024 time frame for project completion. The swing span WILL NOT open for the passage of vessels. In the closed position, the bridge provides 12' vertical clearance above mean high water. Vessels able to transit the bridge while closed can continue to do so at any time, but only through the south channel. For conditions at the work site, mariners can contact the contractor at 209-513-7309 or 415-375-5549; or Caltrans at 209-470-8835 or 209-465-0935. For further information, contact the Coast Guard Bridge Office at 510-437-3461.

Chart 18661

LNM: 07/24

NORTHERN CALIFORNIA-DELTA & RIVERS-PETALUMA RIVER-BRIDGE

HIGHWAY 37 BRIDGE- Caltrans will be conducting bridge fender repairs, utilizing an 90'x80' spudded barge moored outside the navigational channel on the east side, Monday-Friday, 6am-5pm, from 15 Dec, 2023 to 31 May, 2024. Mariners are urged to use caution when transiting the bridge. For a depiction of the damage and exact location, see HWY37FenderDamage.pdf in the enclosure section of this notice. For further information contact the Coast Guard Bridge Office at 510-437-3461.

Chart 18654

LNM: 50/23

NORTHERN CALIFORNIA-DELTA & RIVERS-PETALUMA RIVER-BRIDGE

BLACK POINT RAILROAD BRIDGE- The upstream northeast side fenders are damaged and may not offer adequate protection for the bridge or vessels. Mariners are urged to exercise caution when transiting through the bridge. Estimated time of repairs is unknown. For comments, contact the Coast Guard Bridge Office at (510) 437-3461.

Chart 18654

LNM: 28/23

NORTHERN CALIFORNIA-DELTA & RIVERS-SACRAMENTO RIVER-BRIDGE

REPLACEMENT BUTTE CITY BRIDGE- Replacement bridge construction continues Monday through Friday during daylight hours until 25 September, 2026. A temporary trestle, along with falsework, has been installed at the bridge site. High flood waters have caused damaged to the temporary trestle. The alternate navigation span during construction has moved from the center of the trestle to the east bank of the river. Mariners are requested to use extreme caution when transiting the construction site. The alternate navigation span will be moved back to its original position once water flows recede, and the trestle can be repaired. For on-scene conditions contact Golden State Bridge, Inc, at 415-720-6577 or 925-260-0403 or Caltrans at 530-941-8272 or 530-682-3931. For further information contact the Coast Guard Bridge Office at 510-437-3461.

LNM: 09/24

NORTHERN CALIFORNIA-DELTA & RIVERS-SACRAMENTO RIVER-BRIDGE

TOWER DRAWBRIDGE-Caltrans is requesting to secure the liftspan of the bridge in the closed-to-navigation position from 7:30am to 12:00pm on 1 June, 2024 for an community event. When closed the bridge provides 29 feet of vertical clearance at mean high water. Vessels able to transit the bridge while closed can continue to do so at any time. In the event of an emergency, the bridge can open immediately after all pedestrians clear the bridge. Comments concerning this proposed temporary schedule change will be received by the Coast Guard via email at D11-SG-M-DPW-Bridges@uscg.mil through 15 March, 2024.

Chart 18662

LNM: 09/24

NORTHERN CALIFORNIA-DELTA & RIVERS-SACRAMENTO RIVER-BRIDGE

TOWER BRIDGE- The lift span of the bridge will be secured in the closed-to-navigation position from 8am to 11:15am on 16 March, 2024, and from 7am to 1pm on 17 March, 2024, due to community events. When closed the bridge provides 29' of vertical clearance at mean high water. Vessels that can transit the bridge while closed can continue to do so at any time. In the event of an emergency, the span can be open on signal if at least one hour notice is given to the drawtender. For further information, contact the Coast Guard Bridge Office at (510) 437-3461.

Chart 18664

LNM: 08/24

NORTHERN CALIFORNIA-DELTA & RIVERS-SACRAMENTO RIVER-BRIDGE

TOWER BRIDGE-The lift span of the bridge will be secured in the closed-to-navigation position from 2:15pm to 3:00pm on 7 March, 2024 for a community march. When closed the bridge provides 29' of vertical clearance at mean high water. Vessels that can transit the bridge while closed can continue to do so at any time. In the event of an emergency, the span can open on signal if at least one-hour notice is given to the drawtender. For further information contact the Coast Guard Bridge Office at 510-437-3515.

LNM: 07/24

NORTHERN CALIFORNIA-DELTA & RIVERS-SACRAMENTO RIVER-BRIDGE

RIO VISTA BRIDGE-Preparation for wire rope replacement is ongoing so the lift span of the bridge will open on signal if at least 4-hour notice is given to the drawtender at 707-374-2134. Starting at 7:00pm on 4 March, 2024 the draw span of the bridge will operate as follows; Monday through Saturday, 7:00pm to 7:00am the following day, the bridge will be secured in the closed-to-navigation position for wire rope replacement and at all other times, the bridge will open on signal if at least 4-hours notice is given to the bridge tender at 707-374-2134. It is anticipated wire

NORTHERN CALIFORNIA-DELTA & RIVERS-SACRAMENTO RIVER-BRIDGE

rope replacement will take at least 40 nights to complete if not delayed by weather. For further information contact the Coast Guard Bridge Office at 510-437-3516 or D11-SG-M-DPW-Bridges@uscg.mil.

Chart 18661

LNM: 09/24

NORTHERN CALIFORNIA-DELTA & RIVERS-SACRAMENTO RIVER-BRIDGE

RIO VISTA BRIDGE-The upriver and downriver green center channel lights on the lift span are not operational. The center span channel lights show red in all positions, even when the span is in the fully open-to-navigation position. The bridgetender will be able to inform any vessel requesting an opening when the lift span is fully open. Estimated time of repair is unknown. For further information contact the Coast Guard Bridge Office at 510-437-3516.

Chart 18661

LNM: 49/22

NORTHERN CALIFORNIA-DELTA & RIVERS-SAN JOAQUIN RIVER-BRIDGE

CROWS LANDING ROAD BRIDGE-Replacement of the bridge is ongoing. Work is being conducted Monday through Friday 6am to 4pm until 30 June, 2024. A temporary bridge, with a removable span, is installed to facilitate construction. With the span removed, the temporary bridge will provide, at a minimum, 15ft of horizontal clearance. Temporary falsework has also been installed. The temporary falsework's navigation span will provide 16ft of vertical clearance at Ordinary High Water when the temporary bridge's removable span is removed. Upriver and downriver red channel margin lights and green center channel lights will mark the temporary navigation span at night. To view the temporary navigation span and lighting, see the TemporaryBridge_FalseworkLighting.pdf enclosure at the end of this notice. Mariners are requested to use extreme caution when transiting the work site. For conditions at the project site, mariners can contact the contractor at 916-869-8210. For further information contact the Coast Guard Bridge Office at 510-437-3461.

LNM: 46/23

NORTHERN CALIFORNIA-DELTA & RIVERS-THREE MILE SLOUGH-BRIDGE

THREE MILE SLOUGH BRIDGE- The lift span of the bridge will be secured in the closed-to-navigation position from 02 Jan, 2024 through 30 Jun, 2024, to conduct major mechanical and electrical rehabilitation. During the work, the lift span will not be able to open for the passage of vessels. In the closed position the bridge provides 12 feet of vertical clearance at mean high water. Vessels able to pass through the bridge while closed can continue to do so at any time. For further information contact the Coast Guard Bridge Office at 571-607-5820.

Chart 18661

LNM: 50/23

NORTHERN CALIFORNIA-DELTA & RIVERS-TURNER CUT-BRIDGE

ZUCKERMAN BROTHERS BRIDGE-The retractable span of the bridge is secured in the closed-to-navigation position due to mechanical and electrical issues. When closed the bridge provides 16 feet of vertical clearance at mean high water. Vessels able to transit the bridge while closed can continue to do so at any time. Estimated time of repair, unknown. For further information contact the Coast Guard Bridge Office at 510-467-3516.

Chart 18661

LNM: 25/23

NORTHERN CALIFORNIA-FORT BRAGG-BUOY DEPLOYMENT

Oneka Technologies will deploy two wave monitoring research buoys on 07 October, 2023 near Fort Bragg, CA with the characteristics of FI Y 2.5s at 39-26-38.26N 123-49-27.48W and 39-26-36.71N 123-49-23.20W. RV SCULLY will be deploying the buoys and will be monitoring VHF-FM Chan. 16. The buoys will be deployed until 10 July, 2025. Mariners are requested to transit the area with caution. For more details or comments contact Jeff Williams at 707-974-0917.

Chart 18620

LNM: 40/23

NORTHERN CALIFORNIA-HUMBOLDT-WIND ENERGY PROJECT

The Humboldt Wind Energy Area includes the joint Fisheries Communication Plan developed by RWE and Vineyard Offshore to inform and guide communications between leaseholders in the Humboldt Wind Energy Area located 17-29 nautical miles off the coast of Humboldt, the fishing industry, and other marine users. The current version of this Plan, along with all subsequent revisions, will be available on the Companies' websites. RWE: <https://americas.rwe.com/-/media/RWE/RWE-USA/documents/rwe-vineyard-offshore-joint-fcp.pdf>. Vineyard Offshore: <https://www.vineyardoffshore.com/california>. Please provide any feedback on this plan via email to Rick Robins at rick.robins@rwe.com 757-876-3778 or Lucia Ordonez at lordonez@vineyardoffshore.com 707-572-9011.

Chart 18620

LNM: 06/24

NORTHERN CALIFORNIA-MONTEREY BAY-BUOY DEPLOYMENT

Kinnetic Environmental has deployed two research buoys in Monterey Bay in support of Central Coast Long-Term Environmental Assessment Network (CCLEAN) program from 1 March, 2024 until 15 April, 2024 in position:

36-53-20N 121-55-30W in approximately 100 feet of water

36-42-40N 121-54-40W in approximately 300 feet of water

Both buoys are 4 foot tall white cans with 2 orange retroreflective bands and an orange diamond marked "Warning". Both buoys are lit at night with a yellow flashing light flashing once every 4 seconds. R/V SHANA RAE will be monitoring VHF-FM Chan. 9 & 16 during buoy deployment and retrieval. Due to the scientific equipment attached mariners are advised to stay clear. For further comments or details contact Greg Cotton at 831-239-6192.

Chart 18685

LNM: 08/24

NORTHERN CALIFORNIA-MONTEREY BAY-BUOY DEPLOYMENT

University of California Santa Barbara has deployed research Wave Buoy Station CDIP 266 in position 36-50-41N 121-49-28W with characteristics of a flashing yellow light every 5 seconds. Mariners are requested to transit the area with caution. For more details or comments contact University of California Santa Barbara at 858-534-3032 or admin@cdip.ucsd.edu.

Chart 18685

LNM: 17/23

NORTHERN CALIFORNIA-MONTEREY- WAVEGLIDER DATA COLLECTION

The Monterey Bay Aquarium Research Institute (MBARI) will be conducting 24/7 autonomous, unmanned maritime vehicle operations of two Liquid Robotics, Inc. Wavegliders from 25 January, 2024 until 31 December, 2024 between latitudes 36-18-00N and 37-12-00N and will extend shoreward from as far west as 122-58-35W longitude. Operations consist of scientific ocean data collection. Wave Glider carries no fuel, lubricants, or hydrocarbons, is wave powered, remotely attended from MBARI, moving at speeds of ~1kt, and designed to give way or part if encountered by a

NORTHERN CALIFORNIA-MONTEREY- WAVEGLIDER DATA COLLECTION

vessel. It is approximately 8' x 2' (surfboard size), yellow/copper in color, with a contact plaque and mast extending 1 meter above the water surface supporting a flag. Mariners are advised to use caution when transiting the area. For further information, authorities and mariners can contact MBARI at 831-775-1700, waveglider@listserv.mbari.org , or Liquid Robotics 24/7 WGOE Operations at 888-574-4574 or 408-636-4205.

Chart 18685

LNM: 05/24

NORTHERN CALIFORNIA-MONTEREY-USV OCEANOGRAPHIC RESEARCH

Saildrone, INC. is conducting oceanographic research with two Uncrewed Surface Vehicles (USV) called SAILDRONE VOYAGER in the waters offshore of Farallones, approximately 6 NM of Noonday Rock from 8-29 February, 2024. Saildrone Explorers are 32ft in length, bright orange in color, with a tri-color light on top of the mast. Mariners are requested to transit the area with caution. For more details or comments, contact Saildrone Mission Control at missioncontrol@saildrone.com or 510-722-6070.

Chart 18640

LNM: 05/24

NORTHERN CALIFORNIA-OAKLAND INNER HARBOR-BRIDGE

FRUITVALE AVE RAIL BRIDGE-The lift span of the rail bridge is kept in the partially opened position providing 80 feet of vertical clearance at mean high water. The lift span has been repaired and can be raised to its fully upon position upon request from the Fruitvale Highway bridge operator. When the lift span of the railroad bridge is in the partially open position and the bascule span of the adjacent highway bridge is in the closed position, the lift span will show two red 180-degree center span lights on the upstream and downstream lower edge of the span. When the bascule span of the highway bridge is in the fully opened position, the lift span of the railroad bridge will show two 360-degree green lights, providing a range for the centerline of the channel between both highway and railroad bridges. For further information contact the Coast Guard Bridge Office at 510-437-3516.

Chart 18649

LNM: 25/23

NORTHERN CALIFORNIA-OAKLAND INNER HARBOR-BRIDGE

FRUITVALE AVE RAIL BRIDGE-The lift span of the rail bridge will be secured in the closed-to-navigation position 7:00am to 3:30pm, weekdays, 23 February, 2024 through 4 March, 2024 for the installation of navigation lighting. During working hours, the span will open on signal if at least a 2-hour advance notice is given to the drawtender at the Fruitvale Ave (Miller Sweeney) highway bridge. When closed, the bridge provides 13 feet of vertical clearance at Mean High Water. Vessels able to transit the bridge while closed can continue to do so at any time. After the workday, the lift span will be secured in the partially open-to-navigation position providing 80 feet of vertical clearance at mean high water. For further information, contact the Coast Guard Bridge Office at 510-437-3516.

Chart 18650

LNM: 07/24

NORTHERN CALIFORNIA-OFFSHORE MONTEREY BAY-UNDERWATER OPERATIONS

Reef Check Foundation have deployed underwater equipment offshore Monterey Bay, CA within the following coordinates:

36-36-17N 121-52-46W

36-36-18N 121-52-49W

36-36-15N 121-52-50W

36-36-14N 121-52-46W

All equipment will be established until 24 Mar 24. Mariners are requested to transit the area with caution and avoid anchoring within the coordinates listed above. For more details or comments contact Dan Abbot at 510-684-7835.

Chart 18685

LNM: 12/21

NORTHERN CALIFORNIA-OFFSHORE PT MONTARA-SUVERY OPERATIONS

SAILDRONE, INC. in collaboration with NOAA's National Data Buoy Center (NDBC), is conducting surveys at 37-21-21N 122-52-51W with an Uncrewed Surface Vehicle (USV), called a "SAILDRONE EXPLORER". This vehicle will remain on station from 31 August, 2023 until 31 August, 2024. Saildrone vehicles are 23 feet in length, orange in color, have a white all around light on top of the wing and are marked "SAILDRONE". The vehicle will have limited maneuverability during survey operations. Mariners are requested to remain greater than 500 meters away from the research equipment and to transit the area with caution. For more details or comments contact Saildrone at 510-722-6070 or missioncontrol@saildrone.com.

Charts: 18680 18700

LNM: 36/23

NORTHERN CALIFORNIA-OFFSHORE SAN FRANCISCO-SURVEY OPERATIONS

SAILDRONE, INC. is conducting offshore oceanographic research and survey testing and will operate Unmanned Surface Vehicles (USV's) called SAILDRONE EXPLORER and SAILDRONE VOYAGER until 31 March, 2024 in the area between the eastbound traffic lane and southbound traffic lane extending out to the Pioneer Canyon Area. The operations will be conducted within the following coordinates.

37-40-09N 122-46-01W

37-39-34N 122-44-19W

37-13-12N 122-44-17W

37-25-36N 123-13-15W

The Saildrone Explorer is 23 feet long, 16 feet tall, painted orange with a white all-around light on top and marked SAILDRONE. The Saildrone Voyager is 33 feet long, 21 feet tall and painted orange or gray with a tri-color light on top. Saildrones will broadcast AIS and travel at a speed up to 5 knots. Mariners are requested to transit the area with caution. For more details or comments contact Saildrone Mission Control at 510-722-6060 or missioncontrol@saildrone.com.

Chart 18007

LNM: 51/23

NORTHERN CALIFORNIA-OFFSHORE SAN FRANCISCO-SURVEY OPERATIONS

SAILDRONE, INC. is conducting oceanographic survey operations and will operate an Unmanned Surface Vehicles called Saildrone Explorer and Saildrone Voyager until 31 Mar. 2024. The operations will be conducted 0.8 nm South of General Anchorage 9 in San Francisco Bay and bounded by the following coordinates.

Area 1:

37-44-30N 122-18-46W

37-43-47N 122-17-53W

37-43-16N 122-18-26W

37-44-01N 122-19-22W

NORTHERN CALIFORNIA-OFFSHORE SAN FRANCISCO-SURVEY OPERATIONS

Area 2:

37-42-13N 122-18-26W

37-42-41N 122-17-19W

37-41-45N 122-16-34W

37-41-11N 122-17-45W

The Saildrone Explorer is 23 feet long, 16 feet tall, painted orange with a white all-around light on top and marked SAILDRONE. The Saildrone Voyager is 33 feet long, 21 feet tall and painted orange or gray with a tri-color light on top. Saildrones will broadcast AIS and travel at a speed up to 5 knots. Mariners are requested to transit the area with caution. For more details or comments contact Saildrone Mission Control at 510-722-6070 or missioncontrol@saildrone.com.

Chart 18007

LNM: 51/23

NORTHERN CALIFORNIA-OLD RIVER-HAZARD TO NAVIGATION

The Coast Guard has received a report of downed powerlines in Old River from Mandeville Island to Webb Tract. The downed powerlines have been cut by PG&E and remain laying on the bottom of Old River. Mariners are recommended to avoid anchoring in the area and transit the area with caution. For details or comments contact Coast Guard Sector San Francisco Waterways at 510-612-9729.

Chart 18661

LNM: 01/23

NORTHERN CALIFORNIA-OYSTER COVE MARINA-BUOY DEPLOYMENT

Kilroy Realty has deployed two buoys at the entrance to Oyster Cove Marina at

37-40-03.09N 122-23-13.04W

37-40-03.05N 122-23-12.61W

Both buoys are white 36" cylinders with orange retroreflective bands and an orange diamond marked "Danger Barrier Marina Closed". Both buoys are lit at night with a yellow flashing light flashing once every 4 seconds, FI Y4s. Between the break wall and the pier there is a white line with small floats connected to both buoys. Mariners are advised to use caution in the area to avoid entanglement. For comments or details, contact Travis Lund at 510-419-2392.

Chart 18650

LNM: 48/23

NORTHERN CALIFORNIA-PACIFICA-BUOY DEPLOYMENT

Environmental Science Associates has deployed a private aid approximately 0.85 miles offshore of the Pacifica Municipal Pier at 37-37-5N 122-30-37W for the collection of wave and water level information from 7 September, 2023 to 8 August, 2024. A 23' North River dory boat will be monitoring VHF-FM Chan. 16. For more information or comments contact, Damien Kunz at 805-252-9895.

Chart 18680

LNM: 37/23

NORTHERN CALIFORNIA-PIGEON POINT-TEMPORARY DISESTABLISHMENT

The U.S. Coast Guard has temporarily disestablished the light on Pigeon Point Light (LLNR 320) for approximately 18 months due to planned maintenance. The aid is in position 37-10-54.281N, 122-23-38.253W. Direct any questions or comments regarding this project to Roger Wykle at rwykle@sustainable-group.com or (925) 899-9721.

Chart 18022

LNM: 08/24

NORTHERN CALIFORNIA-REDWOOD CITY-DREDGE OPERATIONS

HME Construction, Inc will be conducting dredge operations in the Redwood City Shipping Channel at 37-32-51N 122-11-39W from 8 March, 2024 until 19 May, 2024, 24hrs a day. Clamshell Dredge SEAHORSE, assist boat DOUGLAS, tug ARTHUR, and 3 dump scows will be monitoring VHF-FM Chan. 13,14 and 67. All dredged materials will be disposed of at SF-11 and DODS disposal sites. Mariners are requested to transit the area with caution. For more details or comments contact Justin Bay at 360-904-2978.

Charts: 18649 18653 18680

LNM: 08/24

NORTHERN CALIFORNIA-SACRAMENTO RIVER-MARINE CONSTRUCTION

River Forum will be conducting construction of two fish restoration projects from 16 October, 2023 until 29 February, 2024 at the Shea Island Side Channel Project and the Kapusta Island Side Channel Project. Heavy equipment will be used and navigating across the river between mile 287-290. Mariners are requested to transit the area with caution. For more details or comments, contact Aurelia Gonzalez at 951-296-7121.

Chart 18662

LNM: 41/23

NORTHERN CALIFORNIA-SACRAMENTO RIVER-REDUCED VERTICAL CLEARANCE

Overhead power cables upstream of Sacramento River at 38-03-54N 121-47-09W have a reported reduced vertical clearance to 119.5'.

LNM: 22/16

NORTHERN CALIFORNIA-SACRAMENTO RIVER-URGENT PG&E REPAIRS

PG&E will be conducting urgent repairs on the Sacramento River at 38-09-59N 121-37-15W and 38-09-47N 121-37-16W on the GRAND ISLAND 2224_12kv circuit due to sag. Work will take place along HWY 160 and Grand Island Road in Sacramento County from 3-4 March, 2024 from 7:00am until 6:00pm.

Wire will be pulled between the two towers using spool/pulley method to repair the reported sag. The rewiring of the line will be restored to its original height estimate at approximately 165-170 feet in a like for like fashion. For more details or comments contact Blake Baker at 530-318-2367 or blake.baker@pge.com

Chart 18640

LNM: 09/24

NORTHERN CALIFORNIA-SAN FRANCISCO BAY-BRIDGE

WEST SPAN SAN FRANCISCO/OAKLAND BAY BRIDGE-During periods of rain, the operation of the navigation lights and fog signals on the bridge are unreliable and may be extinguished. Investigations to determine the cause of the unreliability of the lights and signals, and plans to repair, are in the works. Mariners should exercise caution when transiting the bridge until the navigation lights and fog signals are once again reliable. Report outages of the navigation lights and the fog signals to the U.S. Coast Guard at 510-219-4366.

Chart 18650

LNM: 52/23

NORTHERN CALIFORNIA-SAN FRANCISCO BAY-BRIDGE

GOLDEN GATE BRIDGE-Three 54' temporary under deck platforms; one 425' north of the south tower; one 2,050' and one 2,175' south of the north tower have been installed at the bridge. Temporary platforms reduce vertical clearance at the bridge by no more than 14'. The bridge's maintenance travelers are in use during the project and will remain outboard of the furthest north and furthest south temporary platforms. The temporary platforms and maintenance travelers are lighted at night with all-round red lights (see PlatformLighting_GG_Bridge_20Feb24.pdf at the end of this notice). For navigational safety the maintenance travelers can be moved by contacting the Golden Gate Bridge at 415-923-2220. Work is being conducted Monday through Saturday, 0700-1700 and 2100-0500. For conditions at the bridge, mariners can contact the contractor at 415-716-0384. For more details or comments contact the Coast Guard Bridge Office at 510-437-3516.

Chart 18649

LNLM: 08/24

NORTHERN CALIFORNIA-SAN FRANCISCO BAY-BRIDGE

RICHMOND-SAN RAFAEL BRIDGE-Concrete/steel repairs and cleaning of the bridge continues. Work is being conducted Monday through Friday, 0500 to 1700, until 30 April, 2024. Temporary underdeck platforms have been installed from the western shore to pier 33 and between piers 43-46 reducing vertical clearance in each span by three feet. The upstream and downstream lower edge of each temporary platform is lighted at night with steady burning red lights (see R-SR_Bridge_Temp_Platform_Lighting.pdf at the end of this notice.) Two 160' X 50' barges and one 110' X 32' barge are being used to assist in the installation of the platforms and for the blasting and painting. One barge has been secured to pier 8 and will be left on-scene, unmanned. The outboard corners of the barge at pier 8 is lighted at night with steady red lights. Barge "37" and barge "32" can be contacted on VHF-FM Ch. 16, 13 and 14. At no time will the work impede the east or west navigation spans or their auxiliary spans. For conditions at the bridge, mariners can contact the contractor at 860-904-8787 or 443-847-6286. For further information concerning this project contact the Coast Guard Bridge Office at 510-437-3515.

Chart 18653

LNLM: 46/23

NORTHERN CALIFORNIA-SAN FRANCISCO BAY-BRIDGE

SAN MATEO-HAYWARD BRIDGE-Work continues on the causeway portion of the bridge, east of pier 38, 0700 to 1530, Monday through Friday, until 31 May, 2024. Various size barges will be used during the project, the largest being a 100' X 20' flexfloat barge. During the workday, barges will either be spudded down or tied to the bridge piers, no anchors or anchor line will be utilized. After regular working hours the unmanned barge will be left on-site. For the safety of navigation, the barges can be moved with one-hour advance notice. For conditions at the bridge mariners can contact Golden State Bridge, Inc., on VHF-FM Marine Radio Channels 13, 14, and 16 or by cell phone at 707-246-0725, 925-260-2104, or 925-382-7288. For more details or comments contact the Coast Guard Bridge Office at 510-437-3515.

LNLM: 07/24

NORTHERN CALIFORNIA-SAN FRANCISCO BAY-DETERIORATING CONCRETE PILINGS

Deteriorating concrete pilings above and below the waterline are present in the vicinity of the the south edge of Southampton Shoal Light (LLNR 5480). Mariners are requested to transit the area with caution. For more details or comments contact LT Miranda Brumbaugh at 510-437-2978 or Miranda.E.Brumbaugh@uscg.mil.

Chart 18649

LNLM: 23/15

NORTHERN CALIFORNIA-SAN FRANCISCO BAY-GEOPHYSICAL SURVEY

USGS Pacific Coastal and Marine Geology Science Center (PCMSC) is conducting a 2-day geophysical survey in South San Francisco Bay, near Eden's Landing Ecological Reserve from 7-8 March, 2024. Operations will include high resolution SWATH bathymetry utilizing a pole-mounted SEASWATH echo sounder aboard the USGS Research Vessel, Parke Snavelly, a 36 foot aluminum catamaran. The pole-mounted instrument is positioned just below the vessel's hull and will be surveying in the shallows. Mariners are requested to transit the area with caution. For more details or comments contact Tim Elfers at 831-460-7479.

Chart 18650

LNLM: 09/24

NORTHERN CALIFORNIA-SAN FRANCISCO BAY-METORLOGICAL MONITORING PLATFORM DEPLOYMENT

U.S. Geological Survey has deployed 7 shallow water platforms south of the San Mateo Bridge in the following positions:

- 37-36-23N 122-10-51W
- 37-34-37N 122-10-18W
- 37-35-20N 122-10-50W
- 37-35-21N 122-10-50W
- 37-35-23N 122-10-27W
- 37-35-26N 122-09-39W
- 37-35-30N 122-08-59W

These stations will remain until February 2024 and have a white flashing light. Mariners are requested to transit the area with caution. For further details or comments contact Tim Elfers at 831-460-7479.

Chart 18650

LNLM: 33/23

NORTHERN CALIFORNIA-SAN LEANDRO BAY-BRIDGE

BAY FARM ISLAND HIGHWAY AND PEDESTRIAN BRIDGES-The pier protection system at the bridges have deteriorated and may not offer adequate protection for the bridges as well as vessels transiting the bridge. Mariners are urged to transit both bridges with caution. The bridge owner is in the process of designing a replacement pier protection system. For more details or comments contact the Coast Guard Bridge Office at 510-437-3514.

Chart 18649

LNLM: 31/22

NORTHERN CALIFORNIA-SAN LEANDRO-SUBMERGED VESSEL

A partially capsized and submerged 40 foot twin masted sailing vessel at the entrance to San Leandro Marina at approximate coordinates 37-41-40N 122-11-37W. San Leandro Public works will be contracting removal of the vessel. To report updates or request additional information please contact Sector San Francisco Waterways Management Division at SFWaterways@uscg.mil.

Chart 18650

LNLM: 09/24

NORTHERN CALIFORNIA-SAN LORENZO RIVER MOUTH-GEOPHYSICAL SURVEY

USGS Pacific Coastal and Marine Geology Science Center (PCMSC) is conducting a 1-day geophysical survey in around the San Lorenzo River mouth on 7 March, 2024. The operations to be conducted are bathymetric surveys utilizing two, 200 kHz single beam echo sounders, each mounted on a

NORTHERN CALIFORNIA-SAN LORENZO RIVER MOUTH-GEOPHYSICAL SURVEY

personal watercraft (PWC). The PWC's will conduct cross-shore transects from within the surf zone out to 1200m from shore to document changes in seafloor morphology. Survey speeds are minimal at 5 kts and vessel operators will navigate off pre-determined survey lines, or terminate lines prematurely to avoid marine life as well as recreational activities such as swimming, surfing, fishing and boating. High-speed, quick turns may be observed and are necessary for the PWC operator to face on-coming waves to safely exit the surf-zone. To accomplish the large swath of survey lines within a few hours of the high tide, operators safely and swiftly transit to the next survey line once outside the surf-zone. Mariners are requested to transit the area with caution. For more details or comments contact Tim Elfers at 831-460-7479.

Chart 18650

LNM: 09/24

NORTHERN CALIFORNIA-SAN LORENZO RIVER-BRIDGE

LAUREL STREET BRIDGE- Work will resume for the installation of a new water conveyance pipeline. To conduct the work, a bucket truck on the bridge deck will be utilized to suspend a mobile platform from the side of the bridge, vertical clearance will be reduced by 6-feet. Work will take place Monday through Friday, 7:00am to 4:30pm, from 01 September, 2023 through 31 May, 2024. There will be no in-water work or equipment used during this project. Mariners are urged to use caution while transiting the bridge. For further information contact the Coast Guard Bridge Office at 510-437-3515.

Chart 18685

LNM: 50/23

NORTHERN CALIFORNIA-SAN PABLO BAY-BUOY DEPLOYMENT

US Army Corp of Engineers have deployed 3 meteorological recording stations in the San Pablo Bay area in the following coordinates:

38-04-32N 122-20-41W

38-01-51N 122-18-43W

37-52-39N 122-20-22W

For more details or comments contact Justin Yee at 415-503-6788.

Chart 18654

LNM: 31/23

NORTHERN CALIFORNIA-SANTA CRUZ-HAZARDOUS AND SHOALING

The Santa Cruz Harbor federal navigation channel is shallow, with shoaling extending across the entrance. Breaking waves across the entrance may occur at all tides. Mariners are advised to use extreme caution when transiting the entrance and to check the latest sounding in-advance. The latest sounding is available on the Port District's website www.santacruzharbor.org. For more details or comments, contact LT William Harris at 415-399-7443.

Chart 18685

LNM: 05/24

NORTHERN CALIFORNIA-STEAMBOAT SLOUGH-SUBMERGED VESSEL

The Coast Guard received a report of a submerged 16' vessel north of Steamboat Slough at 38-11-21N 121-39-60W and is not visible from the waterline. There are no salvage plans at this time. Mariners are requested to transit the area with caution. For more details or comments contact USCG Sector San Francisco Waterways at 415-399-7443 or SFWaterways@uscg.mil.

Chart 18661

LNM: 09/24

NORTHERN CALIFORNIA-PILLAR POINT-BUOY DEPLOYMENT

Sofar Ocean has deployed a research buoy approximately 1.4nm West of Pillar Point CA, in position 37-30-00.90N 122-31-57.68W. The buoy is a 15" diameter yellow sphere with a yellow light flashing every 2.5 seconds, Fl Y2.5s. For further comments or details contact Ciara Dorsay at 941-961-8543.

Chart 18680

LNM: 50/23

SOUTHERN CALIFORNIA- CAMP PENDLETON-UNDER WATER TRAINING

The USMC will be conducting small under water detonation for training on 28 February, 2024 from 8:00am until 4:00pm at 33-13-52N 117-26-24W. A 500-meter radius exclusion zone will be cleared of all boat traffic and visible sea life prior to detonation. Vessels will be monitoring VHF-FM Chan. 69. Mariners are requested to transit the area with caution. For more details or comments contact Ryan Courture at 580-301-3236.

Chart 18744

LNM: 05/24

SOUTHERN CALIFORNIA- OFFSHORE CATALINA ISLAND- AUTONOMOUS UNDERWATER VEHICLE OPERATIONS

Boeing will be conducting autonomous underwater vehicle operations from 22 January through 30 September 2024.

OPAREA 1:

33-42-25N 118-19-55W

33-39-47N 118-21-36W

33-41-13N 118-24-40W

33-43-48N 118-22-48W

OPAREA3:

33-26-34N 118-26-55W

33-25-33N 118-23-59W

33-25-36N 118-21-19W

33-29-15N 118-18-36W

33-31-35N 118-23-31W

33-28-11N 118-26-55W

M/V AMERICAN ISLANDER will be monitoring VHF-FM Chan. 13, 14 & 16. Mariners are requested to transit the area with caution. For more details or comments, contact Sector Los Angeles/ Long Beach at 310-521-3860.

Chart 18740

LNM: 03/24

SOUTHERN CALIFORNIA- PORT OF LOS ANGELES-DREDGING OPERATIONS

Manson Construction Co. will be conducting dredging operations from 18 December, 2023 until 1 March, 2024 at the Port of Los Angeles between Berth 74 and Berth 75. DB VALKYRIE, MANSON 59, Flat barge 59, Flat barge 61 and Flat barge 62 will be monitoring VHF-FM Chan. 16 & 67.

Mariners are requested to transit the area with caution. For more details or comments contact Bryan Haynes at 562-762-5394.

Chart 18740

SOUTHERN CALIFORNIA- PORT OF LOS ANGELES-DREDGING OPERATIONS

LNM: 50/23

SOUTHERN CALIFORNIA- SAN LUIS HARBOR-DREDGING OPERATIONS

The U.S. Army Corps of Engineers will be conducting dredging operations from 23 February, 2024 until 31 August, 2024 at Port San Luis Harbor. A land-based crane with 50HP Toyo Submersible pump will conduct every week day during daylight hours. If the crane is next to the water, it should be assumed that dredging operations are underway. Mariners are requested to transit the area with caution. For more details or comments contact Natalie Teeter at 805-595-5431 or nataliet@portsanluis.com.

Chart 18703

LNM: 07/24

SOUTHERN CALIFORNIA-ALAMITOS BAY-ANAHEIM BAY-WATERWAYS ANALYSIS AND MANAGEMENT SYSTEM (WAMS) STUDY

The Coast Guard is conducting a Waterways Analysis and Management System (WAMS) study of the Alamitos Bay and Anaheim Bay. The study focuses on the area's aids to navigation system, waterborne commerce, marine casualty information, port/harbor resources, emergency response plans, routine and emergency communication capabilities, and future development projects. Furthermore, this study seeks to obtain data on the effectiveness of the system of Aids to Navigation, as well as other waterway safety concerns. Any interested company or individual wishing to provide comments or participate in a user survey may do so via link at: <https://www.research.net/r/FZBRS7P> or contact LTJG Rubymar Sebastian at rubymar.sebastian@uscg.mil or via phone at (571)-613-2930.

Chart 18749

LNM: 02/24

SOUTHERN CALIFORNIA-CAMP PENDELTON-BUOY DEPLOYMENT

Scripps Waverider CDIP Lighted Research Buoy 264 has been deployed 1.4 NM southwest of Red Beach, Camp Pendleton CA in position 33-17-23.8N 117-30-00.5W. The buoy is operated by Scripps Institute of Oceanography and is 3-foot diameter sphere with an attached telemetry whip antenna and a nighttime yellow color warning flashing light. The light timing sequence is a series of 5 flashes at 1-second intervals with a period of 20 seconds between each series. Visual range is one kilometer. The buoy is painted yellow and marked "Wave Buoy" with the phone number 858-534-3032. For further comments or details contact James Behrens at 858-534-3032.

Chart 18774

LNM: 43/23

SOUTHERN CALIFORNIA-CHANNEL ISLANDS HARBOR-BRIDGES

CHANNEL ISLANDS BLVD EAST (MANDALAY BAY) & CHANNEL ISLANDS BLVD WEST (EDISON CANAL) BRIDGES-Rehabilitation of the bridges will take place 7 am to 3:30 pm, Monday through Friday, 15 February, 2023 through 15 March, 2024. No in-water work will be conducted at the east bridge.

At the west bridge two 5' X 20' X 10' flexi-floats will be employed and will be secured with two 35' spuds. The flexi-floats will reduce horizontal clearance in the channel by no more than 10 feet. 8' X 11' cofferdams will encase the bridge columns at each bent. Only one channel of the west bridge will be impacted at any one time. The ends of the cofferdams and each corner of each flexi-floats will be lighted at night with steady burning red lights (See Channel_Islands_Bridge_Rehab.pdf at the end of this article.) For the safety of navigation, the flexi-floats can be moved with a 30-minute advance notice to the contractor. Mariners are requested to approach the west bridge with caution and avoid the span of the bridge where work is being conducted. For further information contact the Coast Guard Bridge Office at 510-437-3516.

Chart 18725

LNM: 46/23

SOUTHERN CALIFORNIA-CHANNEL ISLANDS TO SAN DIEGO-OCEANOGRAPHIC RESEARCH

Saildrone, INC. is conducting Uncrewed Surface Vehicle(USV) operations called SAILDRONE Voyager from 10 February, 2024 until 31 July, 2024 around the Channel Islands, Gulf of Santa Catalina, and San Diego. The SAILDRONE VOYAGER is 10 meters in length, 6.4 meters tall, gray in color, has a tricolor light on top on the wing and is marked SAILDRONE. Mariners are requested to transit the area with caution. For more details or comments, contact Saildrone Mission Control at missioncontrol@saildrone.com or 510-722-6070.

Charts: 18720 18740 18765

LNM: 06/24

SOUTHERN CALIFORNIA-EL SEGUNDO-BUOY REPLACEMENT

Chevron has replaced a weather buoy in position 33-54-30N 118-27-09W with a similar yellow buoy with characteristics of a flashing yellow light every 3 seconds. Mariners are requested to transit the area with caution. For more details or comments contact Chevron at 310-615-5735 or cscsmtsmm@chevron.com.

Chart 18744

LNM: 17/23

SOUTHERN CALIFORNIA-EL SEGUNDO-DIVING OPERATION

Aqueos will be conducting diving/ROV operations from 23 October, 2023 until 30 April, 2024 offshore Ventura. The DB SALTA VERDE (WDF9705) 185' LOA black hull with a crawler crane on deck, will be in a 4-point moor 24-hours per day and will be monitoring VHF-FM Chan. 16. Operations conducted during daylight hours. Two temporary mooring will be set, and locations have been added to the survey plot map. The surface buoy will have a beacon light for additional visual reference. Mariners are requested to transit the area with caution. For more details or comments contact Jason Smith at 805-205-3156.

Chart 18744

LNM: 45/23

SOUTHERN CALIFORNIA-LEUCADIA STATE BEACH-BUOY DEPLOYMENT

Scripps Waverider CDIP Lighted Research Buoy 262 has been deployed 0.7 NM west of Leucadia State Beach, Encinitas CA in position 33-03-43.5N 117-18-50.7W. The buoy is operated by Scripps Institute of Oceanography and is 3-foot diameter sphere with an attached telemetry whip antenna and a nighttime yellow color warning flashing light. The light timing sequence is a series of 5 flashes at 1-second intervals with a period of 20 seconds between each series. Visual range is one kilometer. The buoy is painted yellow and marked "Wave Buoy" with the phone number 858-534-3032. For further comments or details contact James Behrens at 858-534-3032.

Chart 18774

LNM: 43/23

SOUTHERN CALIFORNIA-LONG BEACH-MARINE CONSTRUCTION

GP POLB will be conducting marine construction from 27 November, 2023 until 30 May, 2024 at 33-46-10N 118-12-45W. DB VULCAN and DB VALKYRIE will be monitoring VHF-FM Chan. 13, 16 & 66. Mariners are requested to transit the area with caution. For more details or comments contact Bryan Haynes at 562-762-5394.

Chart 18749

LNM: 47/23

SOUTHERN CALIFORNIA-LONG BEACH-MARINE CONSTRUCTION

CPS Coastal Permits, Inc. will be conducting marine construction from 15 February, 2024 until 15 March, 2024 at Long Beach at 33-45-07N 118-06-57W. A small 15 foot barge will be installing two 47 x 4 foot fingers, 22 x 6 ft headwalk, two 4 x 4 knees, and a 16 foot square concrete marina guide piling. Mariners are requested to transit the area with caution. For more details or comments contact Max Jackson at 714-732-6127.

Chart 18749

LNLM: 05/24

SOUTHERN CALIFORNIA-LONG BEACH-MARINE CONSTRUCTION

Dutra is conducting marine construction at Carnival Cruise Terminal for Wharf H at the Port of Long Beach until the end of February. CB LONG BEACH along with a material barge and several assist vessels will be monitoring VHF-FM Chan. 13, 16, and 82. The crane barge will be operating off a 4-point anchor spread and or spuds. Equipment as well as support vessels will be moving around the area daily. Mariners are requested to transit the area with caution. For more details or comments contact Andrew Hunt at 415-847-6640.

Chart 18749

LNLM: 02/24

SOUTHERN CALIFORNIA-LOS ANGELES/LONG BEACH HARBOR-BRIDGE

VINCENT THOMAS BRIDGE-A 180 ft temporary maintenance platform continues to move west from the east tower. The platform reduces vertical clearance of the bridge by 5.5 ft. It is anticipated the temporary platform will arrive at the east edge of the shipping channel in summer of 2024. The upstream and downstream corners and every 50' along the upstream and downstream side of the platform is lighted at night with steady burning red lights (see V_Thomas_Platform_Lighting1.pdf at the end of this notice). Work will take place during daylight hours, Monday through Friday. For conditions at the bridge mariners can contact 213-479-4138, 213-479-1144 or 310-261-9552. For more details or comments contact the Coast Guard Bridge Office at 510-437-3516.

Chart 18749

LNLM: 30/22

SOUTHERN CALIFORNIA-MARINA DEL REY-DREDGING OPERATIONS

HME Construction, Inc. will be conducting dredging operations from 27 December, 2023 until 1 April, 2024 at 33-57-34N 118-27-37W and 33-55-56N 118-26-39W along the mouth of the bay. D/V SEA HORSE and D/V TUG DOUGLAS will be monitoring VHF-FM Chan. 13 & 16. Mariners are requested transit the area with caution. For more details or comments contact Edgar Diaz at 360-695-4553.

Chart 18744

LNLM: 51/23

SOUTHERN CALIFORNIA-MISSION BAY-SAN CLEMENTE ISLAND-WATERWAYS ANALYSIS AND MANAGEMENT SYSTEM (WAMS) STUDY

The Coast Guard is conducting a Waterways Analysis and Management System (WAMS) study of the Mission Bay and San Clemente Island. The study focuses on the area's aids to navigation system, waterborne commerce, marine casualty information, port/harbor resources, emergency response plans, routine and emergency communication capabilities, and future development projects. Furthermore, this study seeks to obtain data on the effectiveness of the system of Aids to Navigation, as well as other waterway safety concerns. Any interested company or individual wishing to provide comments or participate in a user survey may do so via link at: <https://www.research.net/r/GQ263NZor> contact LTJG Rubymar Sebastian at Rubymar.sebastianechevarria@uscg.mil or via phone at 571-613-2930.

Charts: 18740 18773

LNLM: 02/24

SOUTHERN CALIFORNIA-MORRO BAY-WIND ENERGY PROJECT

Equinor Wind US LLC, leaseholder for the Bureau of Ocean Energy Management Lease Area OCS-P 0563, has developed a Fisheries Communication Plan (FCP) which is available for public comment. The FCP overviews the plan for engagement with the region's fishing community during development of the Equinor California Offshore Wind Project. The FCP is available at www.equinorcalifornia.com. Comments on the plan, and any questions about the project, can be sent to Elizabeth Marchetti at emarc@equinor.com or 401-954-2902.

Chart 18700

LNLM: 46/23

SOUTHERN CALIFORNIA-MORRO BAY-WIND ENERGY PROJECT

The Morro Bay Wind Energy Area includes the Even Keel Wind Project as one of the three leaseholders. EKW is providing their Final Fisheries Communication Plan that can be accessed at Even Keel Wind Project website <https://evenkeelwind.invenery.com/documents> this Plan is a living document that will continue to be updated as needed. Please provide any feedback on this plan via email to Laura.Casali@stantec.com.

Chart 18700

LNLM: 44/23

SOUTHERN CALIFORNIA-NATIONAL CITY-MARINE CONSTRUCTION

R. E Staite will be conducting dredging operations and marine construction at the Austal USA facility located in National City, California at 32-39-29N 117-07-07W from 1 April, 2023 until 29 February, 2024. DB Point Loma, DB William F, DB Palomar and RES 180 along with multiple scows a survey boat and various deck barges will conduct operations. All vessels will be monitoring VHF-FM Chan. 16. All dredged material will be disposed of at LA-5 ocean disposal site. An Exclusion Zone (EZ) will be established for purposes of protection from munitions and explosives of concern (MEC) that may be disturbed within the project area. The EZ area will extend into the water in an arc and the size flex within the project area as the project progresses depending on the work activity. Work hours for the project are anticipated to be 24/7 during high production times. The EZ will extend into the water and may impact marine vessel traffic, swimmers and divers. Only authorized personnel will be allowed into the EZ. Mariners are requested to transit the area with caution. For more details or comments contact Erick Myers at 619-233-0178.

Chart 18773

LNLM: 35/23

SOUTHERN CALIFORNIA-OFFSHORE CARLSBAD/SAN DIEGO-MARINE SURVEY

SubCom, LLC will be conducting a survey of proposed subsea telecommunications cable route from 30 January, 2024 until 14 April, 2024 in California coastal and marine waters west of Carlsbad and San Diego at positions:

- 33-07-32N 117-24-05W
- 33-06-07N 117-29-39W
- 33-05-01N 117-33-31W
- 33 04-22N 117-34-52W
- 32-56-47N 117-45-57W
- 32-53-22N 117-50-57W
- 32-51-30N 117-52-30W
- 32-37-34N 117-49-00W

M/V OCEAN TITAN will have limited maneuverability while conducting this operation and will be monitoring VHF-FM Chan. 13 & 16. Mariners are

SOUTHERN CALIFORNIA-OFFSHORE CARLSBAD/SAN DIEGO-MARINE SURVEY

requested to transit the area with caution. For more details or comments, contact Daniel Marquis at 603-285-5248.

Chart 18765

LMN: 05/24

SOUTHERN CALIFORNIA-OFFSHORE MORRO BAY-FISHERIES COMMUNICATION PLAN AVAILABLE

Golden State Wind LLC, leaseholder for the Bureau of Ocean Energy Management Lease Area OCS-P 0564, has developed a Fisheries Communication Plan (FCP) which is available for public comment. The FCP overviews the plan for engagement with the region’s fishing community during development of the Golden State Wind Project. The FCP is available at https://www.goldenstatewind.com/wp-content/uploads/2023/09/GSW_Fisheries-Comms-Plan_2023.08.23_clean_508-compressed.pdf Comments on the plan, and any questions about the project, can be sent to Rachel Mahler at rachel.mahler@oceanwinds.com or 805-680-8138.

Chart 18703

LMN: 45/23

SOUTHERN CALIFORNIA-OFFSHORE POINT LOMA-OCEANOGRAPHIC OPERATIONS

The Scripps Institution of Oceanography research will be conducting surface to floor oceanographic -mooring operations from 19 October, 2023 until 28 February, 2024 at 32-43-35N 117-43-35W. The moorings will extend 1 meter off the bottom in 100 meters of water. Mariners are requested to not disturb these Navy experiments and to avoid dragging in the area. During over-the-side operations, R/V ROBERT GORDON SPROUL will be restricted in ability to maneuver; all traffic requested to give a wide berth. R/V ROBERT GORDON SPROUL will monitor VHF-FM Chan. 13 & 16. Mariners are requested to transit the area with caution. For further comments or details contact sp-master@ucsd.edu or Heather Galiher at 858-226-8761.

Chart 18765

LMN: 42/23

SOUTHERN CALIFORNIA-OFFSHORE SOLANA BEACH-DREDGING OPERATIONS

Manson Construction Co. along with West Coast Hopper Maintenance Dredging will be conducting dredging operations from 17 January, 2024 until 17 March, 2024 7 days a week, 24 hours per day offshore Solana Beach with pump-out operations onto Solana Beach to renourish the shoreline at 32-58-15N 117-16-49W and 32-59-32N 117-16-31W. Dredge Bayport HOPPER DREDGE (WCZ4240), M/V JOHN M (WDC8571) and T/B TERRI L BRUSCO (WDC3034) will be monitoring VHF-FM Chan. 13 & 16, 66 & 67. A pump ashore buoy is attached to 400 feet of floating pipe attached to 2200 feet of submerged steel pipeline. Stand-up danger buoys are attached to the submerged pipeline at 400’ intervals for the first 1000’ of submerged line extending offshore. Mariners are urged to transit at their slowest safe speed to minimize wake and requested to transit the area with caution. For more details or comments contact Colby Towle at 904-763-4476.

Chart 18774

LMN: 02/24

SOUTHERN CALIFORNIA-OFFSHORE SURFSIDE-DREDGE OPERATIONS

Manson Construction Co. is conducting hydraulic maintenance dredging of Surfside, CA at 33-42-32N 118-06-17W, 24 hours a day from 27 November, 2023 until 28 February, 2024. Dredge HR MORRIS, DB FREYA, dredge tender PUP, dredge tender CUB, and survey boat RUSTLER will monitor VHF-FM Chan. 16 and 67. Material will be transported through floating pipeline, submerged pipeline, and shore pipeline to the disposal area at Surfside/Sunset Beach. Mariners are requested to transit the area with caution. For more details or comments contact Project Manager Max Oviedo at 206-619-7729.

Chart 18749

LMN: 46/23

SOUTHERN CALIFORNIA-OFFSHORE-HAZARDOUS OPERATIONS

There will be hazardous operations conducted in the Fleet Training Area Hot (FLETA HOT) until 1 January, 2025. Mariners are requested to transit the area with caution. For more details or comments contact Henry Rogel at 619-545-1757

A. HAZARDOUS OPERATIONS REQUEST (FLETA HOT):

(1) IN AREA BOUNDED BY:

- 32-33-00N 118-25-00W
- 32-35-00N 118-16-00W
- 32-35-00N 117-40-00W
- 31-55-00N 117-40-00W
- 31-55-00N 118-25-00W
- 32-33-00N 118-25-00W

TO POINT OF ORIGIN.

B. HAZARDOUS OPERATIONS REQUEST (SOAR):

(1) IN AREA BOUNDED BY:

- 32-52-42N 119-11-58W
- 33-08-04N 118-52-05W
- 33-08-04N 118-46-02W
- 33-03-52N 118-41-48W
- 33-02-32N 118-43-33W
- 32-58-53N 118-43-31W
- 32-47-40N 118-32-21W
- 32-36-55N 118-45-00W
- 32-36-55N 118-56-57W

TO POINT OF ORIGIN.

C. HAZARDOUS OPS REQUEST (SHOBA WITH BOTH EXTENSIONS):

(1) AREA BOUNDED BY FOLLOWING COORDS:

- 32-55-00 N 118-25-00 W
- 32-55-00 N 118-15-00 W
- 32-40-00 N 118-15-00 W
- 32-40-00 N 118-35-00 W
- 32-45-00 N 118-35-00 W

TO POINT OF ORIGIN.

D. HAZARDOUS OPERATIONS REQUEST (MOORED BUOYS IN PYRAMID COVE)

(1) IN AREA BOUNDED BY:

- ANCHOR 1: 15FT, 32-47-38N 118-25-49W
- ANCHOR 2: 15FT, 32-47-24N 118-25-12W

SOUTHERN CALIFORNIA-OFFSHORE-HAZARDOUS OPERATIONS

ANCHOR 3: 20FT, 32-47-36N 118-24-53W
ANCHOR 4: 20FT, 32-47-11N 118-25-26W
ANCHOR 5: 25FT, 32-47-19N 118-25-00W
ANCHOR 6: 30FT, 32-47-07N 118-24-51W
ANCHOR 7: 210FT, 32-47-24N 118-24-27W
ANCHOR 8: 170FT, 32-47-24N 118-25-59W
ANCHOR 9: 243FT, 32-47-19N 118-24-27W
ANCHOR 10: 227FT, 32-47-19N 118-25-59W
ANCHOR 11: 00FT, 32-47-45N 118-24-18W
ANCHOR 12: 00FT, 32-46-56N 118-24-18W
ANCHOR 13: 00FT, 32-46-56N 118-26-13W
ANCHOR 14: 00FT, 32-47-45N 118-26-13W.

Charts: 18700 18720 18740

LNLM: 01/24

SOUTHERN CALIFORNIA-OFFSHORE-HAZARDOUS OPERATIONS LIVE FIRE

There will be hazardous operations conducted in the Fleet Training Areas (FLETA HOT, SOAR, and SHOBA WITH BOTH EXTENSIONS) until 1 January, 2025. Mariners are requested to stay clear of these areas. The hazardous operations include live fire. For more details or comments contact Darrel Rumsey at 619-545-1744 or Henry Rogel at 619-545-1757.

A. HAZARDOUS OPERATIONS REQUEST (FLETA HOT FOR LIVE FIRE):

- (1) IN AREA BOUNDED BY:
 - 32-33-00N 118-25-00W
 - 32-35-00N 118-16-00W
 - 32-35-00N 117-4-000W
 - 31-55-00N 117-40-00W
 - 31-55-00N 118-25-00W
 - 32-33-00N 118-25-00W (TO POINT OF ORIGIN).

B. HAZARDOUS OPERATIONS REQUEST (SOAR FOR LIVE FIRE)

- (1) IN AREA BOUNDED BY:
 - 32-52-42N 119-11-58W
 - 33-08-04N 118-52-05W
 - 33-08-04N 118-46-02W
 - 33-03-52N 118-41-48W
 - 33-02-32N 118-43-33W
 - 32-58-53N 118-43-31W
 - 32-47-40N 118-32-21W
 - 32-36-55N 118-45-00W
 - 32-36-55N 118-56-57W (TO POINT OF ORIGIN).

C. HAZARDOUS OPS REQUEST (SHOBA WITH BOTH EXTENSIONS FOR LIVE FIRE):

- (1) AREA BOUNDED BY FOLLOWING COORDS:
 - 32-55-00N 118-25-00W
 - 32-55-00N 118-15-00W
 - 32-40-00N 118-15-00W
 - 32-40-00N 118-35-00W
 - 32-45-00N 118-35-00W (TO POINT OF ORIGIN).

D. HAZARDOUS OPS REQUEST (PYRAMID COVE FOR MOORED BUOYS)

- (1) AREA BOUNDED BY FOLLOWING COORDS:

DEPTH	LAT	LONG
ANCHOR 1:	15FT-	32-47-38N 118-25-49W
ANCHOR 2:	15FT-	32-47-24N 118-25-12W
ANCHOR 3:	20FT-	32-47-36N 118-24-53W
ANCHOR 4:	20FT-	32-47-11N 118-25-26W
ANCHOR 5:	25FT-	32-47-19N 118-25-00W
ANCHOR 6:	30FT-	32-47-07N 118-24-51W
ANCHOR 7:	210FT-	32-47-24N 118-24-27W
ANCHOR 8:	170FT-	32-47-24N 118-25-59W
ANCHOR 9:	243FT-	32-47-19N 118-24-27W
ANCHOR 10:	227FT-	32-47-19N 118-25-59W
ANCHOR 11:	00FT-	32-47-45N 118-24-18W
ANCHOR 12:	00FT-	32-46-56N 118-24-18W
ANCHOR 13:	00FT-	32-46-56N 118-26-13W
ANCHOR 14:	00FT-	32-47-45N 118-26-13W

Charts: 18020 18720 18740

LNLM: 05/24

SOUTHERN CALIFORNIA-OXNARD-DOCK REPLACEMENT

Anchor QEA is conducting a dock replacement for Anacapa Isle Marina of Docks A through E, & G in Channel Islands Harbor, Oxnard, California at 34-10-22N, 119-13-37W from 1 June, 2023 until 13 March, 2024. Vessels will be monitoring VHF-FM Chan. 16. Mariners are requested to transit the area with caution. For more details or comments contact Armando Alonso at 805-814-4010.

Chart 18725

LNLM: 20/23

SOUTHERN CALIFORNIA-PISMO BEACH-MARINE OPERATIONS

Orange Marine will be conducting marine fiber optic cable Installation off of Grover Beach from 19 March, 2024 until 1 July, 2024. Installation operations will be conducted by Cable Ship Rene Descartes. For cable locations see enclosure "Local Notice to Mariners JUNO Subsea Fiber Optic Cable Mar2024.pdf". Fishermen are requested to remove all fishing lines or traps within one nautical mile on either side of the coordinates located on the enclosure. Mariners are requested to transit the area with caution. For more details or comments contact Chris Brungardt at 916-949-9141.

Charts: 18700 18720

SOUTHERN CALIFORNIA-PISMO BEACH-MARINE OPERATIONS

LNM: 07/24

SOUTHERN CALIFORNIA-POINT LOMA -DREDGING OPERATIONS

Pacific Dredge & Construction will be conducting dredging operations at Coast Guard Mooring Ballast Point in Point Loma San Diego on 29 February, 2024 at 32-41-12N 117-14-04W with offload at silver strand nearshore disposal at 32-39-43N 117-10-32W. DB PDC 180, Ocean TB HILDAGO, and HB CADET will be monitoring VHF-FM Chan. 6 & 16. Mariners are requested to transit the area with caution. For more details or comments contact Matt MacArther at 951-541-6941.

Chart 18773

LNM: 08/24

SOUTHERN CALIFORNIA-POINT LOMA-MARINE CONSTRUCTION

R.E. Staite Engineering, Inc. will be conducting marine construction from 26 February, 2024 until 30 September, 2024 at Naval Base Point Loma at 32-42-12N 117-14-05W. A Floating Crane Barge, Push Boat JEANIE R, Work Boat JOHN DRAKE and skiffs will be monitoring VHF-FM Chan. 16. Mariners are requested to transit the area with caution. For more details or comments contact R.E. Staite Engineering, Inc. at 619-629-9733 or restaite@restaite.net.

Chart 18773

LNM: 07/24

SOUTHERN CALIFORNIA-PORT OF LONG BEACH-MARINE CONSTRUCTION

Manson Construction Co. is conducting marine construction at the Port of Long Beach, Berths D50-D-52 (Slip 5) from 27 November, 2023 until 1 March, 2024. DB VULCAN, DB VALKYRIE, FB 37 BARGE, and FB 61 BARGE will be monitoring VHF-FM Chan. 13, 67 & 68. Mariners are requested to transit the area with caution. For more details or comments contact Bryan Haynes at 562-762-5394.

Chart 18744

LNM: 47/23

SOUTHERN CALIFORNIA-REDONDO BEACH-DREDGING OPERATIONS

Manson Construction Co. will be conducting dredging operations from 1 February, 2024 until 31 March, 2024 in the City of Redondo Beach at 33-50-56N 118-24-05W and 33-50-29N 118-23-32W. Subsequent disposal of dredged material at the placement site centered approximately 0.85 miles south of the entrance to King Harbor 0.35 miles offshore. DB VULCAN, TB ELMER M, SB WAHOO and dump barge SOUTHPORT will be monitoring VHF-FM Chan. 13, 16 & 67. Mariners are requested to transit the area with caution. For more details or comments, contact Alex Kolessar at 904-568-0213.

Chart 18744

LNM: 03/24

SOUTHERN CALIFORNIA-SAN DIEGO BAY-BRIDGE

CORONADO BAY BRIDGE MAINTENANCE-Scaffolding installed between piers 11-12, 12-13, and 13-14, reduces vertical clearance by more than 8'. The upstream and downstream lower edges of the scaffolding are lighted at night with red lights. For more details or comments contact the Coast Guard Bridge Office at 510-437-3461.

Charts: 18772 18773

LNM: 13/20

SOUTHERN CALIFORNIA-SAN DIEGO BAY-CONSTRUCTION PROJECT

Marathon Construction Corporation will be conducting marine construction on damaged pilings, replacing floating docks and gangways, conducting dive operations, and installing electrical and mechanical utilities from 22 February, 2024 until 31 January, 2025 at Naval Amphibious Base Coronado, Piers 3, 17 and 21 at 32-40-50N 117-09-27W. Work will be performed mostly from a 60' X 120' crane barge, skiffs, and floating docks and will be monitoring VHF-FM Chan. 16. Mariners are requested to transit the area with caution. For more information or comments contact Timothy Meyer at 619-843-8975.

Charts: 18741 18765 18773

LNM: 07/24

SOUTHERN CALIFORNIA-SAN DIEGO BAY-MARINE CONSTRUCTION

Marathon Construction will be conducting marine construction at Naval Base Coronado from 4 January, 2024 until 31 March 2025 at 32-41-43N 117-13-51W. Mariners are requested to transit the area with caution. For more details or comments contact Dane Kost at 619-244-5522.

Chart 18765

LNM: 51/23

SOUTHERN CALIFORNIA-SAN DIEGO BAY-MARINE CONSTRUCTION

R.E. Staite Engineering, Inc. will be conducting marine construction from 1 April, 2024 until 31 December, 2024 at BAE Systems San Diego facility, Pier 1, Pier 3 and Building 13 Wharf at 32-41-24N 117-08-41W. Vessel Spud Crane Barge RES 150, P/B JEANIE R, support barges, and skiffs will be monitoring VHF-FM Chan. 16. Mariners are requested to transit the area with caution. For more details or comments contact R.E. Staite Engineering, Inc. at 619-538-2761 or restaite@restaite.net.

Chart 18773

LNM: 09/24

SOUTHERN CALIFORNIA-SAN DIEGO BAY-MARINE EVENT

The Cortez Racing Association (CRA) will be sponsoring the CRA March Madness Regatta on 9 March, 2024 from 10:00am to 5:00pm. The regatta will consist of 40 sailboats starting near Harbor Island, proceeding to San Diego Bay Channel Lighted Buoy 16 (LLNR 1620), continuing to San Diego Bay Channel Lighted Buoy 28 (LLNR 1980), and finishing back at Harbor Island. Mariners are requested to transit the area with caution. For more details or comments, contact Dale Greaney at 760-470-1730.

Chart 18741

LNM: 02/24

SOUTHERN CALIFORNIA-SAN DIEGO BAY-NAVY ESTUARY

NORTH HARBOR DRIVE BRIDGE-The north side red pier lights are extinguished. The south side green center channel light is dim and difficult to see. NIMITZ PEDESTRIAN BRIDGE-The north side red pier light at pier 3 on the west side of the channel is extinguished. Estimated time of repair is unknown. For further information contact the Coast Guard Bridge Office at 510-437-3514.

Chart 18773

LNM: 08/24

SOUTHERN CALIFORNIA-SAN DIEGO-MARINE CONSTRUCTION

R.E. Staite Engineering Inc. will be conducting marine construction for the repair and replacement of the existing Pier 302 at Naval Base Pt. Loma from 2 January, 2024 until 2 January, 2025 at 32-42-08N 117-14-09W. DB WILLIAM F, PB JEANIE R, PB JOHN DRAKE, RES 180 Barge, spud/crane

SOUTHERN CALIFORNIA-SAN DIEGO-MARINE CONSTRUCTION

barge and support barge RES 110 will be monitoring VHF-FM Chan. 16. Mariners are requested to transit at their slowest safe speed to minimize wake transit the area with caution. For more details or comments contact Tory Wagoner at 619-629-9733 or restaite@restaite.net.

Chart 18773

LNM: 50/23

SOUTHERN CALIFORNIA-SAN DIEGO-MARINE CONSTRUCTION

R.E. Staite Engineering Inc. will be conducting marine construction at Pier 160B (Finger A) at Naval Base Pt. Loma in San Diego from 4 December, 2023 until 28 February, 2024 at 32-42-12N 117-14-05W. A floating crane barge JEANIE R push boat, JOHN DRAKE work boat and skiffs will be performing construction operations. All vessels will be monitoring VHF-FM Chan. 16. Mariners are requested to transit at their slowest safe speed to minimize wake transit the area with caution. For more details or comments contact Tory Wagoner at 619-629-9733 or restaite@restaite.net.

Chart 18773

LNM: 45/23

SOUTHERN CALIFORNIA-SAN DIEGO-MARINE CONSTRUCTION

R.E. Staite Engineering Inc. will be conducting marine construction at MZB VOR Mission Bay Island in San Diego from 25 September, 2023 until 30 March, 2024 at 32-46-55N 117-13-30W. RES 180 Floating Crane Barge, RES 110 Material Barge, P/B JEANIE R, W/B JOHN DRAKE and skiffs will be monitoring VHF-FM Chan. 16. Mariners are requested to transit the area with caution. For more details or comments contact R.E. Staite Engineering, Inc. at 619-233-0178 or restaite@restaite.net.

Chart 18773

LNM: 37/23

SOUTHERN CALIFORNIA-SAN DIEGO-MARINE CONSTRUCTION

R.E. Staite Engineering Inc. will be conducting marine construction associated with a quaywall that is located between the Naval Base Point Loam Fluel Pier and Pier 122 in San Diego from 18 September, 2023 until 24 April, 2024 at 32-42-00N 117-14-19W. Vessels JEANIE R, flexi floats and various work boats will be monitoring VHF-FM Chan. 16. Mariners are requested to transit the area with caution. For more details or comments contact R.E. Staite Engineering, Inc. at 619-233-0178 or restaite@restaite.net.

Chart 18773

LNM: 37/23

SOUTHERN CALIFORNIA-SAN DIEGO-MARINE CONSTRUCTION

Merkel and Associates, Inc. will be conducting marine construction at The Gaylor Chula Vista Resort and Convention Center Project at 32-37-53N 117-06-16W from 6-29 February, 2024. Replacement and/or relocation of three storm drains and construction of associated new outfall structures within existing revetement slope of the San Diego Bay shoreline will be staged within upland habitat and work will be conducted from the shoreline during low tide. For more details or comments contact Madeline Cowden at 281-210-6456.

Chart 18773

LNM: 06/24

SOUTHERN CALIFORNIA-SAN DIEGO-MARINE CONSTRUCTION

R.E. Staite Engineering Inc. will be conducting marine construction at Wharf 4 at the Continental Maritime of San Diego, LLC from 15 February, 2024 until 30 April, 2024 at 32-41-42N 117-08-58W. The RES 150 Spud Crane Barge, Floating Crane Barge, P/B JEANIE R, and crew boat JOHN DRAKE will be monitoring VHF-FM Chan. 16. Mariners are requested to transit the area with caution. For more details or comments contact Kristin Joseph at 619-233-0178 or restaite@restaite.net.

Chart 18773

LNM: 06/24

SOUTHERN CALIFORNIA-SAN DIEGO-MARINE EVENT

The San Diego Yacht Club will be sponsoring the One Design Weekend Monthly Series in Coronado Roads, CA. 25 sailing vessels will be racing on courses starting at approximately 32-38-41N 117-11-35W with courses oriented 1.5 nautical miles into the wind direction. Races will be held on 6-7 January, 3-4 February, 9-10 March, 27-28 April, 18-19 May, 8 June, 20 July, 10-11 August, 28-29 September, 12-13 October, 16-17 November, and 15 December, 2024, from 11:00am to 4:00pm each day. Mariners are requested to transit the area with caution. For more details or comments, contact Jeff Johnson at 619-933-9922.

Chart 18773

LNM: 48/23

SOUTHERN CALIFORNIA-SAN DIEGO-MARINE EVENT

The San Diego Yacht Club will be sponsoring the San Diego to Puerto Vallarta Race from 23 February until 2 March, 2024. 25 sailing vessels will be racing on a long-distance course starting near SD Buoy 17 at 32-42-20N 117-13-54 approximately 11 AM, proceeding out of the San Diego Bay Channel to open waters, and finishing in Puerto Vallarta, Mexico. Mariners are requested to transit the area with caution. For more details or comments, contact Jeff Johnson at 619-933-9922.

Chart 18773

LNM: 48/23

SOUTHERN CALIFORNIA-SAN DIEGO-OCEANOGRAPHIC BUOY DEPLOYMENT

The City of San Diego Marine Biology Lab is conducting year-round monitoring with oceanographic buoys in the vicinity of the South Bay Ocean Outfall and Point Loma Ocean Outfall until December, 2024. Surface buoys are yellow and lighted equipped with AIS and run from ocean surface to ocean bottom. The Ocean Monitoring Program has two oceanographic moorings deployed at 32-40-12N 117-19-29W and 32-31-55N 117-11-13W. The M/V OCEANUS AND M/V MONITOR III when in the area will monitor VHF-FM Chan. 16. Mariners are requested to transit the area with caution. For more details or comments contact Adriano Feit at 619-758-2377 or 858-882-7055.

Charts: 18765 18772

LNM: 01/24

SOUTHERN CALIFORNIA-SAN DIEGO-OCEANOGRAPHIC SURVEY

The City of San Diego Marine Biology Lab is conducting year-round ocean monitoring sampling in the vicinity of the South Bay Ocean Outfall and Point Loma Ocean Outfall until 15 November, 2024. The Ocean Monitoring Program conducts trawl sampling, benthic sampling with a double Van Veen sediment grab, vertical CTD casts and horizontal tows with an undulating underwater vehicle, ROV surveys and multiple moorings are deployed in the region below. Ocean sampling will be conducted in an area bound by the following coordinates:

32-31-54N 117-11-11W

32-32-10N 117-11-57W

32-32-03N 117-12-06W

32-32-33N 117-11-56W

32-40-10N 117-19-22W

SOUTHERN CALIFORNIA-SAN DIEGO-OCEANOGRAPHIC SURVEY

32-40-04N 117-19-34W
 32-39-37N 117-19-32W
 32-39-56N 117-19-39W
 32-40-10N 117-16-55W

The M/V OCEANUS AND M/V MONITOR III when in the area will monitor VHF-FM Chan. 16. Mariners are requested to transit the area with caution. For more details or comments contact Adriano Feit at 619-758-2377 or 858-882-7055.

Charts: 18765 18772

LNM: 47/23

SOUTHERN CALIFORNIA-SAN DIEGO-ZUNIGA POINT-SUNKEN VESSEL

The Coast Guard has received a report of a sunken 25-foot sailing vessel near Zuniga Point at 32-39-48N 117-11-30W. Mariners are requested to transit the area with caution. For more details or comments, contact Coast Guard Sector San Diego at 619-278-7031.

Chart 18773

LNM: 49/23

SOUTHERN CALIFORNIA-SAN DIEGO/SAN CLEMENTE ISLAND-AUV OPERATIONS

Anduril Industries will be conducting Autonomous Underwater Vehicle (AUV) operations from 5 February, 2024 until 15 March, 2024 in the vicinity of San Diego and San Clemente Island at positions:

32-12-20N 118-50-27W
 32-22-23N 117-36-22W
 33-15-48N 117-27-31W
 32-22-05N 117-09-26W

The M/V BOLD HORIZON will be monitoring VHF-FM Chan. 16. Mariners are requested to transit the area with caution. For more details or comments contact Kevin Stoddard at 949-796-0703 or Justin Lewis at 949-416-1878.

Charts: 18740 18744 18765

LNM: 06/24

SOUTHERN CALIFORNIA-SAN JOSE CREEK-GOLETA SLOUGH-BRIDGE

STATE ROUTE 217 HIGHWAY BRIDGE REPLACEMENT- Caltrans has cleared the waterway of in-water construction during the winter 2023-2024. The bird exclusion netting remains in place at the bridge. For more information, contact the Coast Guard Bridge Office at 510-437-3461.

Chart 18720

LNM: 46/23

SOUTHERN CALIFORNIA-SAN MATEO PT.-BUOY DEPLOYMENT

A Waverider buoy has been deployed 5 NM southwest of San Mateo Pt. in position 33-20-11N 117-39-31W. The buoy was deployed on 26 May, 2023. The buoy is operated by Scripps Institute of Oceanography and is 3-foot diameter sphere with an attached telemetry whip antenna and a nighttime yellow color warning flashing light. The light timing sequence is a series of 5 flashes at 1-second intervals with a period of 20 seconds between each series. Visual range is one kilometer. The buoy is painted yellow and marked "Wave Buoy" with the phone number 858-534-3032. For further comments or details contact Vicki Kellis at 858-534-3032.

Chart 18774

LNM: 23/23

SOUTHERN CALIFORNIA-SAN NICHOLAS ISLAND-ATMOSPHERIC BUOY DEPLOYMENT

Naval Air Systems Command has deployed an atmospheric sampling buoy 1.5 miles Northeast of San Nicolas Island at 33-18-00N 119-30-55W. The yellow buoy FI Y 3s, is 6 feet above the waterline and 2 feet in diameter. Mariners are requested to transit the area with caution. For more details or comments contact Kyle Edwards at 805-989-0672.

Chart 18720

LNM: 39/22

SOUTHERN CALIFORNIA-SAN NICHOLAS ISLAND-COMMERCIAL FISHING OPERATIONS

Ventura County Commercial Fishermen's Association member vessels will be operating within a 35 mile radius of San Nicholas Island between January 01, 2024 and June 15, 2024. Vessels can be expected in this area anytime wind and sea state is at a Beauford Scale of 4 or less. Gear will be marked with a flagged highflyer, radar reflector, lights and bouys. Please give a closest point of approach of 1/2 mile. Vessels can be contacted on VHF-FM Chan. 11 and 16. Mariners are requested to transit the area with caution. For more details and comments contact 805-448-4455.

Chart 18022

LNM: 42/23

SOUTHERN CALIFORNIA-SANTA BARBARA-AQUACULTURE ESTABLISHMENT

Ocean Rainforest will be establishing an Aquafarm, starting on 30 March, 2023, located 4.3 NM South of Santa Barbara. The site is bound within four yellow boundary marker buoys with a flashing yellow light every 2 seconds (FI Y2s) in the following positions:

34-19-58.53N 119-42-45.72W
 34-20-10.12N 119-42-45.72W
 34-20-11.23N 119-42-07.24W
 34-19-59.64N 119-42-07.92W

In line with the outer boundary buoys are small unlit floats that are marking the anchors associated with the Aquaculture area, the total buoys marking the anchors are 12 on the long axis of each side and 2 between the corner buoys on the short axis. Within the boundary markers will be 188 buoys/floats, see Enclosure AQUACULTURE ESTABLISHMENT.pdf enclosure below. The interior buoys of the aquaculture are in the shape of a rectangle with the outer edge marked with yellow buoys, every other buoy has a flashing yellow light flashing every 2 seconds (FI Y2s). Within the rectangle are 135 small unlit floats marking the cultivation lines. Mariners are advised to remain clear of this area as entanglement with associated equipment may occur. Vessel DANNY C will be conducting the deployment and monitoring VHF-FM Chan. 7 and 16. For more details or comments contact Ocean Rainforest Inc at 805-722-9601 or eliza@oceanrainforest.com.

Charts: 18720 18725

LNM: 11/23

SOUTHERN CALIFORNIA-VANDENBERG AFB-HAZARDOUS OPERATIONS

Hazardous operations will be conducted from Vandenberg AFB, CA for Western Range 2407 from 2:34pm on 4 March, 2024 until 4:59pm on 10 March, 2024. Hazardous operation areas are bounded by the following coordinates:

Hazard Area A:
 34-39-00N 120-38-00W
 34-38-00N 120-35-00W
 34-35-00N 120-36-00W

SOUTHERN CALIFORNIA-VANDENBERG AFB-HAZARDOUS OPERATIONS

34-32-00N 120-38-00W
34-33-00N 120-39-00W
34-35-00N 120-40-00W
34-39-00N 120-38-00W (CLOSING THE FIRST POINT)
Hazard Area B:
34-41-00N 120-39-00W
34-39-00N 120-28-00W
34-24-00N 120-27-00W
32-43-00N 121-01-00W
32-44-00N 121-03-00W
33-46-00N 120-53-00W
34-35-00N 120-43-00W
34-41-00N 120-39-00W (CLOSING THE FIRST POINT)

Hazard Area C:
30-59-00N 121-28-00W
31-07-00N 121-20-00W
31-07-00N 121-17-00W
29-54-00N 121-11-00W
29-17-00N 121-38-00W
29-18-00N 121-52-00W
29-52-00N 121-56-00W
30-59-00N 121-28-00W (CLOSING THE FIRST POINT)

Mariners are advised to remain clear of these areas for the duration of operations. For more details or comments contact Vandenberg AFB at 805-606-8825 or on VHF-FM Chan. 06 or 16.

Charts: 18680 18700 18720 18740

LNM: 09/24

SOUTHERN CALIFORNIA-VANDENBERG-HAZARDOUS OPERATIONS-STATOLAUNCH

Hazardous operations will be conducted by Stratolaunch and the Western Range W9358 from 7:00am (1500Z) until 1:00pm (2100Z) on 24 and 25 February, 2024. Hazardous operation areas are bounded by the following coordinates:

Hazard Area:
34-25-01N 122-36-00W
34-24-00N 122-42-00W
35-28-01N 123-16-01W
36-05-10N 123-28-01W
36-15-07N 123-26-02W
36-13-59N 123-02-02W
35-51-00N 122-28-59W
35-13-01N 121-54-00W
34-25-01N 122-36-00W
(CLOSING THE FIRST POINT)

Mariners are advised to remain clear of these areas for the duration of operations. For more details or comments contact Stratolaunch at rangeops@stratolaunch.com and 661-584-2365 or on VHF-FM Chan. 06 or 16 during mission.

Charts: 18680 18700 18720 18740

LNM: 04/24

SOUTHERN CALIFORNIA-VENTURA HARBOR-DREDGING OPERATIONS

Manson Construction Co. and The U.S. Army Corps of Engineers will be conducting dredging operations from 8 March, 2024 until 25 April, 2024 at Ventura Harbor with operations 24 hours a day, 7 days a week at 34-14-44N 119-16-18W. Dredge HR MORRIS, DB FREYA, Dredge Tender PUP, Dredge Tender CUB and SB RUSTLER will be monitoring VHF-FM Chan. 16 & 67. Mariners are requested to transit the area with caution. For more details or comments contact Manson Construction Co. at 562-983-2340.

Chart 18725

LNM: 09/24

SOUTHERN CALIFORNIA-VENTURA-MARINE CONSTRUCTION

Cushman Contracting Corp. will be conducting marine construction at the Ventura Pier from 21 December, 2023 until 30 March, 2024 at 34-16-32N 119-17-27W. All work will be above water on the pier. Mariners are requested to transit the area with caution. For more details or comments contact, Eric Barrera at 661-874-9644.

Chart 18725

LNM: 52/23

SECTION VIII - LIGHT LIST CORRECTIONS

An Asterisk *, indicates the column in which a correction has been made to new information

(1) No.	(2) Name and Location	(3) Position	(4) Characteristic	(5) Height	(6) Range	(7) Structure	(8) Remarks
------------	--------------------------	-----------------	-----------------------	---------------	--------------	------------------	----------------

None

PUBLICATION CORRECTIONS

None

ENCLOSURES

REPORT OF DELAY AT DRAWBRIDGE

[Delay_Report_11-2017.pdf](#)

Use link above to Report a Delay at a Drawbridge.

LNM: 06/07

SOUTHERN CALIFORNIA-PORTS OF LOS ANGELES/LONG BEACH-LA/LB HARBOR-BRIDGE

[V_Thomas_Platform_Lighting1.pdf](#)

See link above for platform lighting for Vincent Thomas Bridge.

LNM: 28/19

NORTHERN CALIFORNIA-DELTA & RIVERS-AMERICAN RIVER-BRIDGE

[AmRiv_SiltCurtain_BargeLocation.pdf](#)

CAPITAL CITY HWY (ROUTE 51) BRIDGE-See link above for barge and silt curtain locations.

LNM: 22/22

NORTHERN CALIFORNIA-SAN FRANCISCO BAY-BRIDGE

[PlatformLighting_GG_Bridge_20Feb24.pdf](#)

GOLDEN GATE BRIDGE-Temporary Platform Location and Lighting revised 20 Feb 24.

LNM: 08/24

NORTHERN CALIFORNIA-SAN FRANCISCO BAY-BRIDGE

[R-SR_Bridge_Temp_Platform_Lighting.pdf](#)

RICHMOND-SAN RAFAEL BRIDGE- See link above for temporary underdeck platform lighting for concrete and steel repairs.

LNM: 48/21

NORTHERN CALIFORNIA-DELTA & RIVERS-SACRAMENTO RIVER-BRIDGE

[ButteConstructionLighting-BuoyLine.pdf](#)

REPLACEMENT BUTTE CITY BRIDGE-See link above for temporary construction trestle and lighting and proposed buoy line..

LNM: 36/22

SOUTHERN CALIFORNIA-PISMO BEACH-MARINE OPERATIONS

[JUNO Subsea Fiber OpCab.pdf](#)

See link above

LNM: 07/24

SOUTHERN CALIFORNIA-SANTA BARBARA-AQUACULTURE ESTABLISHMENT

[AQUACULTURE ESTABLISHMENT.png](#)

see link above.

LNM: 03/23

SOUTHERN CALIFORNIA-CHANNEL ISLANDS HARBOR-BRIDGES

[Channel_Islands_Bridge_Rehab.pdf](#)

CHANNEL ISLANDS BLVD EAST (MANDALAY BAY) & CHANNEL ISLANDS BLVD WEST (EDISON CANAL) BRIDGES-Lighting diagram for cofferdams and flexi-floats.

LNM: 06/23

NORTHERN CALIFORNIA-DELTA & RIVERS-PETALUMA RIVER-BRIDGE

[HWY37FenderDamage.pdf](#)

HIGHWAY 37 BRIDGE-Open link above for location and depiction of fender damage.

LNM: 26/23

CALIFORNIA - SANTA BARBARA - TRAFFIC SEPARATION (TSS) EXTENDED

[TSS_Circ.78.pdf](#)

See link above.

LNM: 21/23

SOUTHERN CALIFORNIA - CHANNEL ISLANDS - AREA TO BE AVOIDED (ATBA) ENLARGED

[ATBA_Circ.342.pdf](#)

See link above.

LNM: 21/23

CALIFORNIA - SANTA BARBARA TSS AND CHANNEL ISLANDS ATBA GRAPHIC

[new-protections.jpg](#)

See link above.

LNM: 21/23

NORTHERN CALIFORNIA-DELTA & RIVERS-SAN JOAQUIN RIVER-BRIDGE

[TemporaryBridge_FalseworkLighting.pdf](#)

CROWS LANDING REPLACEMENT-See link above for temporary falsework, temporary bridge, the temporary navigation channel during construction with navigation lighting plan.

LNM: 36/22

THE LOCAL NOTICE TO MARINERS IS AVAILABLE ON THE WORLD WIDE WEB AT [HTTPS://WWW.NAVCEN.USCG.GOV](https://www.navcen.uscg.gov)

W.J. George, CDR
U.S. Coast Guard
Chief Waterways Management Branch

**U.S. COAST GUARD
REPORT OF DELAY AT DRAWBRIDGE
PER 33 CFR 117.5**

BRIDGE NAME: _____ DATE: _____

MILE : _____ WATERWAY: _____

1. Name/ Type of Vessel: _____ Direction of Travel : _____

2. Vessel Owner (Name): _____

(Address): _____

3. Name of Pilot (if applicable): _____

(Address): _____

4. Time vessel signaled for bridge opening: _____

5. Location of vessel when signal was given: _____

6. Time and location of vessel when delay began: _____

7. Method of signal for bridge opening: () Radio () Sound () Visual.

(If sound or visual signal was used, specify: _____)

8. Time bridge operator acknowledged signal: _____

9. Method of bridge operator acknowledgement: () Radio () Sound () Visual

(If sound or visual signal was used, specify: _____)

10. Did bridge operator acknowledgement indicate the bridge,

() Could be opened immediately?

() Could not be opened immediately?

11. If land traffic crossed the bridge:

Time land traffic started across the bridge _____

Time land traffic stopped crossing the bridge _____

Did land traffic stop on the bridge? _____

Duration land traffic stopped on the bridge _____

12. Time drawbridge opened for navigation _____

13. Additional comments:

I certify the above information is true to the best of my knowledge and understand this statement may be used by the U.S. Coast Guard in levying fines against the bridge owner.

Signature _____

Telephone _____

Mariners may complete and return to:

Commander (dpw)

Fax: (510) 437-5836

Email: Carl.T.Hausner@uscg.mil

Eleventh Coast Guard District

Coast Guard Island, Building 50-2

Alameda, CA 94501-5100

Attn: Bridge Office

Questions? Please contact: Carl Hausner, Bridge Administrator, Eleventh Coast Guard District

Office: (510) 437-3516

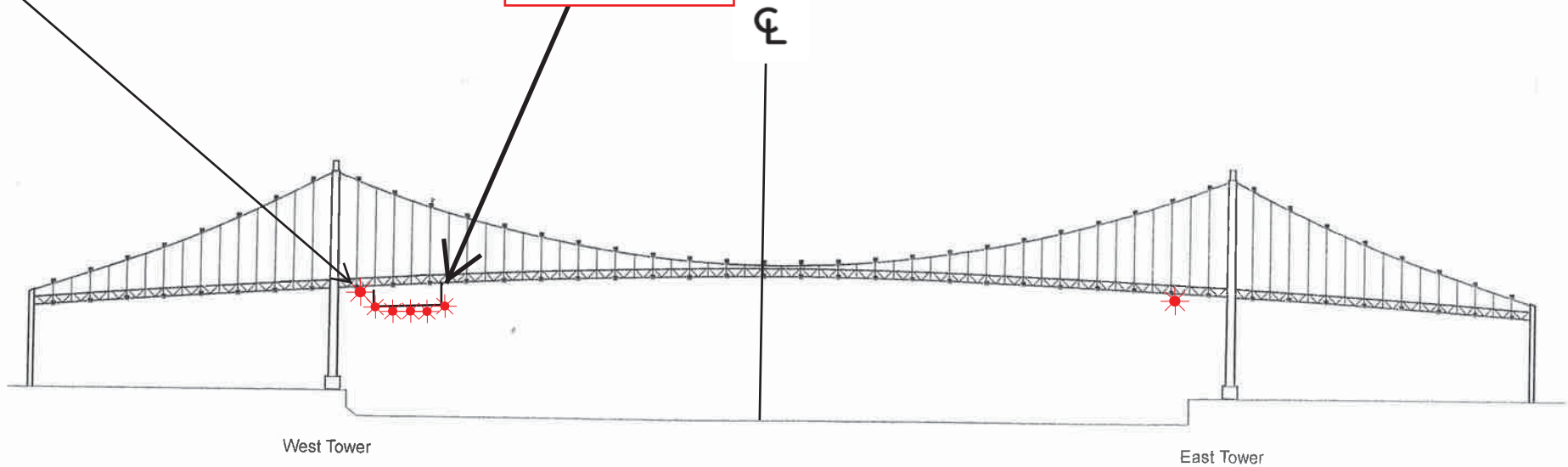
Cell: (510) 219-4366

Mariners are reminded not to require bridge openings for appurtenances nonessential to navigation, per 33 CFR 117.11

Vincent Thomas Highway Bridge
Mile 3.0
Los Angeles/Long Beach Harbor
Painting Project

West Channel Margin
Light

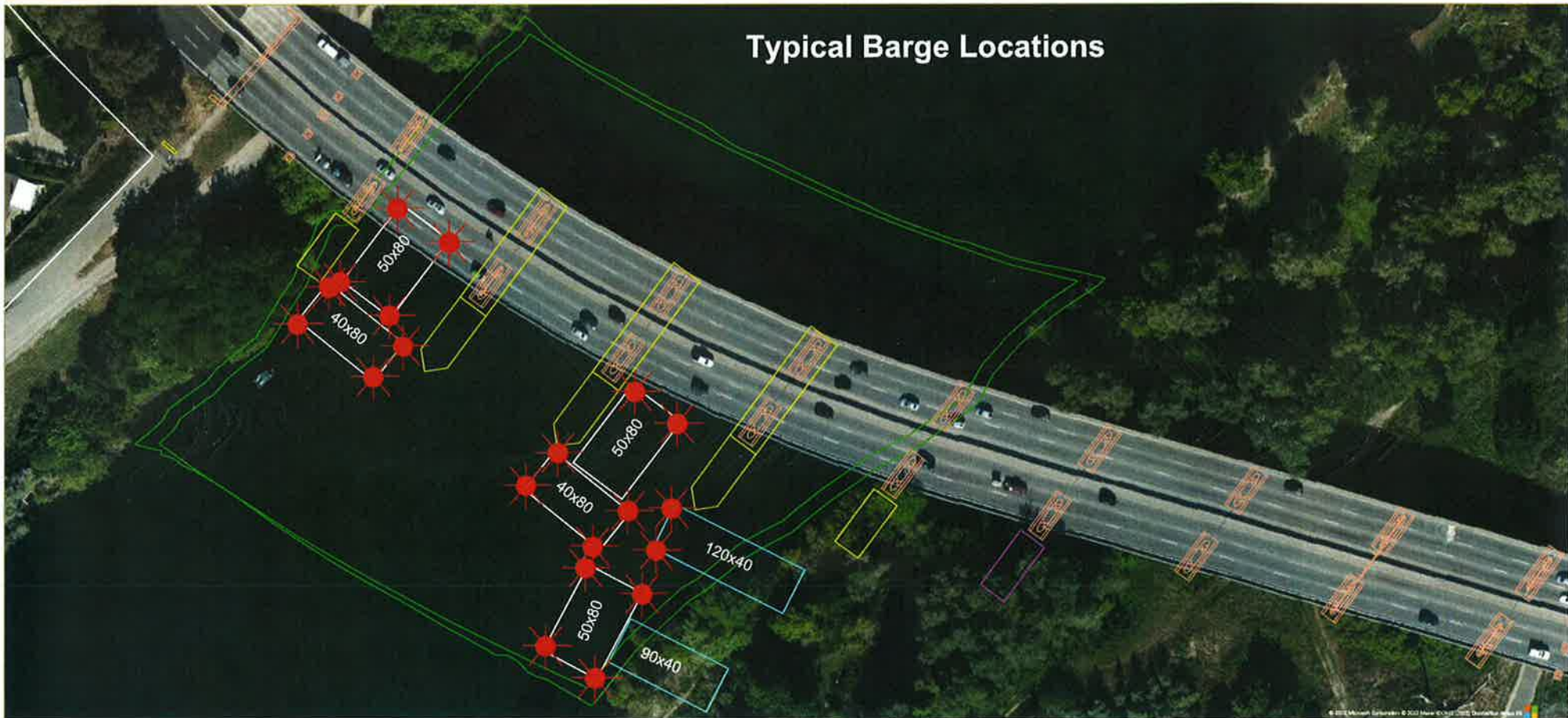
Below Low Steel
Platform. 5' 4"
reduction in
vertical clearance



A 180 foot long under deck temporary platform will reduce vertical clearance by 5' 4". Each corner and every 50 feet along the the upstream and downstream side of the platform will lighted at night with steady burning red lights visible at 2000 yards by approaching vessels. In a duration of 1-year the platform will progress from the western channel margin light to 250' west of the centerline of the bridge.

Rehabilitation and Modification Project
Capital City (CA Route 51) Bridge, Mile 4.0, American River

Typical Barge Location and Typical Barge Lighting



Each corner of each barge is lighted at night with steady burning all-round red light, visible at 2,000 by approaching vessels. All vessels transiting the project area should use extreme caution. Turbidity curtains will be placed at different locations during the project. The next four diagrams show the proposed location of the curtains.



Capital City Bridge, Mile 4.0, American River
Turbidity Curtain Plan
Phase 1 Installation



Capital City Bridge, Mile 4.0, American River
Turbidity Curtain Plan
Phase 2 Installation



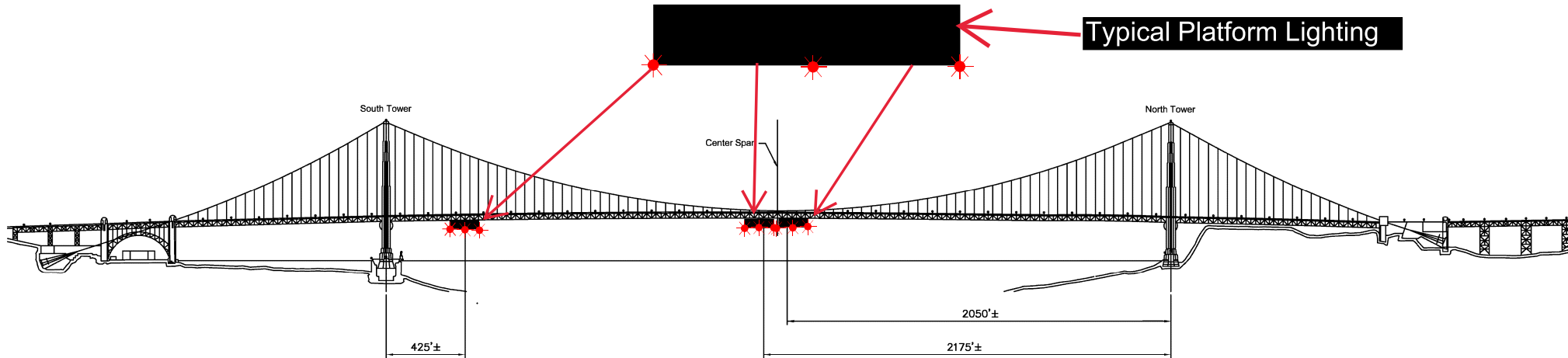
Capital City Bridge, Mile 4.0, American River

Turbidity Curtain Plan
Phase 3 Installation



Capital City Bridge, Mile 4.0, American River
Turbidity Curtain Plan
Phase 4 Installation

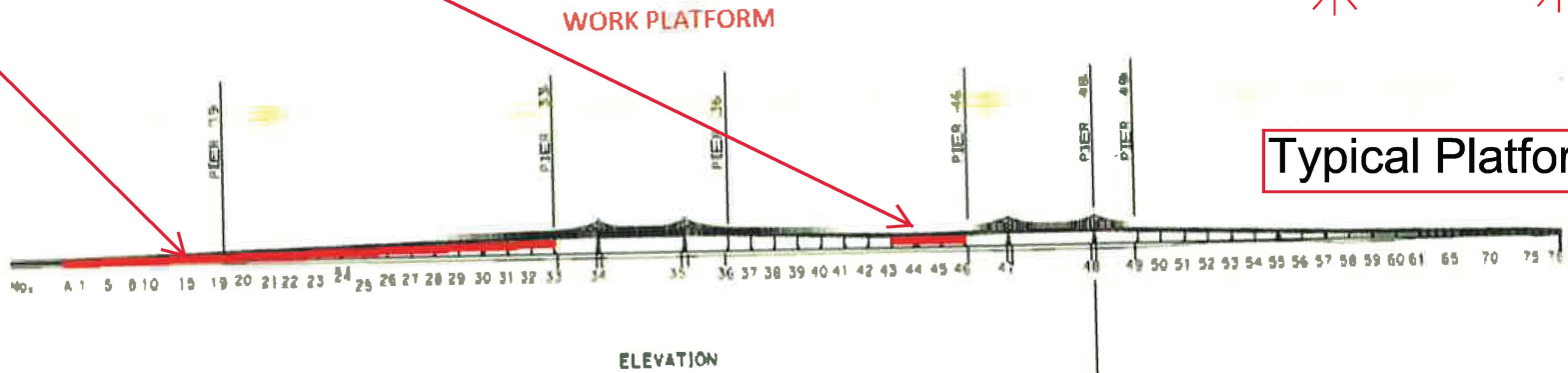
Temporary Access Platforms
Golden Gate Bridge, mile 2.5, San Francisco Bay
Revised 20 Feb 24



Three 54 ft wide temporary platforms are installed in the main span below low steel of the bridge, in relation to centerline of the span; two south of the north tower and one north of the south tower, reducing vertical clearance by no more than 14 feet. The upstream and downstream lower edges of the temporary platforms will be lighted at night with steady burning red lights visible at 2,000 yards by approaching vessels.

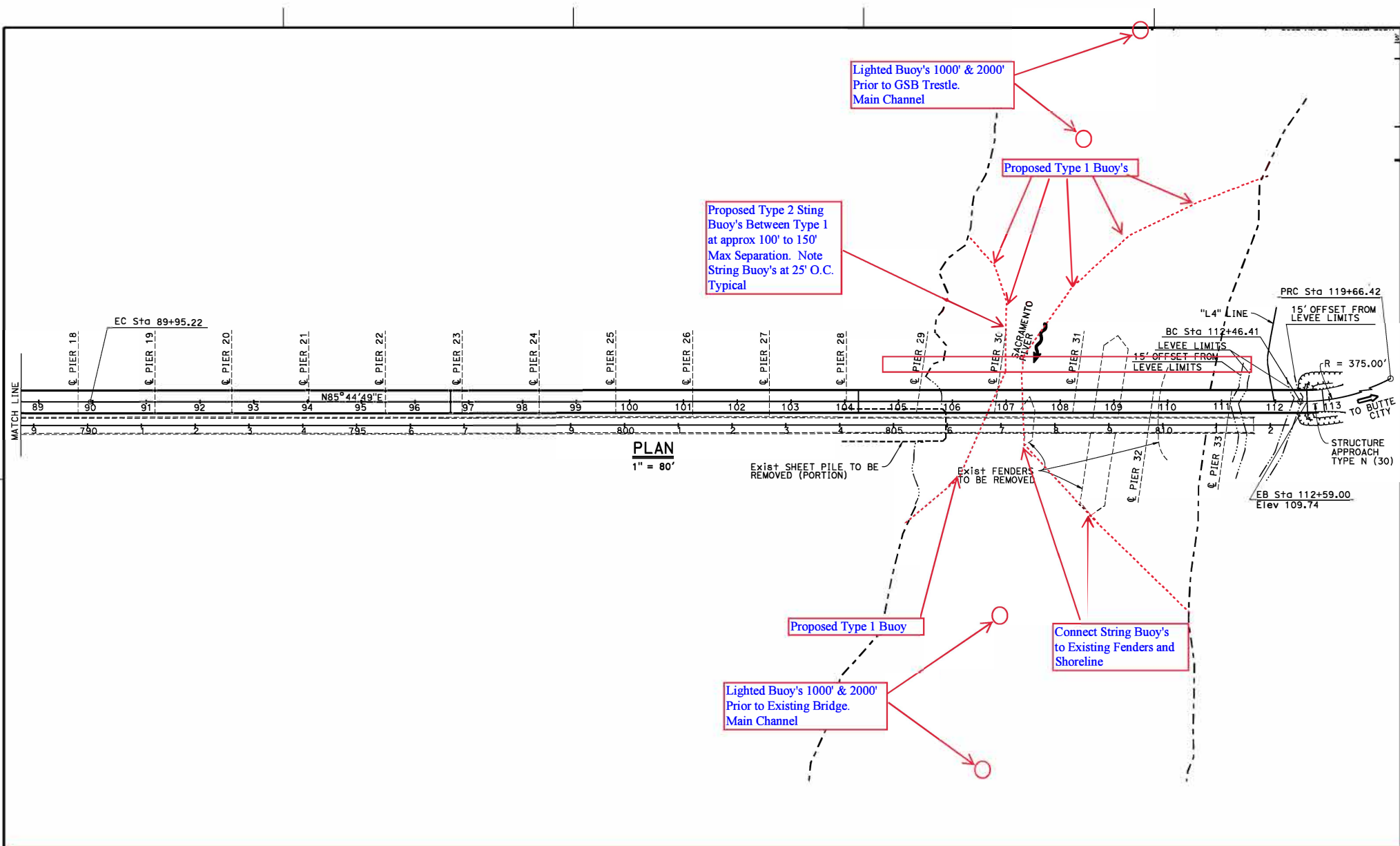
Painting and Structural Repairs Project
Richmond-San Rafael Bridge
Mile 13.0, San Francisco Bay

Temporary Underdeck Platforms



Typical Platform Lighting

The upstream and downstream lower edges of each temporary platform in each span are lighted at night with steady burning red lights to be seen at 2,000 yards by approaching vessels. Each platform reduces vertical clearance by no more than 3 feet.



**Butte City Bridge Replacement Project, mile 169.7, Sacramento River
Proposed Buoy Line During Construction**

LOCAL NOTICE TO MARINERS

JUNO SUBSEA FIBER OPTIC CABLE

Fiber Optic Cable Laying Operations in the California EEZ
March 19 – June 1, 2024
By the *C/S Rene Descartes*

Submitted to: U.S. Coast Guard, Sector LA-LB (COTP)
Via email: D11-DG-SectorLALB-WWM@uscg.mil

Subsea Fiber Optic Cable Landing Activity

The *C/S René Descartes*, a cable-laying ship, will be performing cable installation operations for the JUNO Cable System from the Grover Beach (CA) to Japan. The cable route will pass through the US Exclusive Economic Zone (EEZ). The cable ship will perform the following functions in the order listed:

1. clear the seabed from debris using a grapnel,
2. plough bury the cable on the continental shelf,
3. lay the cable on the seafloor from the continental shelf to the EEZ boundary,
4. return to the continental shelf to improve the cable burial using a ROV.

All mariners are requested to remain aware of the cable-laying operations and maintain a minimum one (1) nautical mile (NM) clearance of the cable ship.

Start/end dates: March 19th, 2024, to June 1st, 2024.

(Above Start/end dates will be changed slightly subject to the actual cable laying progress.)

General Location of Cable Lay Activities: The cable alignment will cross NOAA Navigational Charts: 18700 (South half) and 18720 (NE corner) and is shown on the following figure. A detailed table of the coordinates along the alignment is included in the section below.



JUNO Planned Cable Route

Cable Ship Vessel Details



Vessel Information	
Name	C/S René Descartes
Flag	FRANCE
Year Built	2002
IMO	9248100
Call Sign	FNWZ
Dimensions	
Length	144.50 m
Beam	22 m
Draft	7.40 m
Gross Tonnage	11,700 ton
Communication	
Bridge Contact	+870- 773 164 657, +870- 773 188 333
Information	Email: passe.descartes@orange.com
Immediate Point of Contact	
Contact Person, Position	Jean-Sebastien SERNA, Master until end of April Guillaume LE SAUX, Master in May
Company Name	Orange Marine
Address	21, rue Jasmin, 75016 PARIS, FRANCE
Email	cdt.descartes@orange.com
Telephone	+33 9 689 000 17

The cable route coordinates for the segments passing through the US EEZ are provided on the following page.

JUNO CABLE MARINE ROUTE COORDINATES

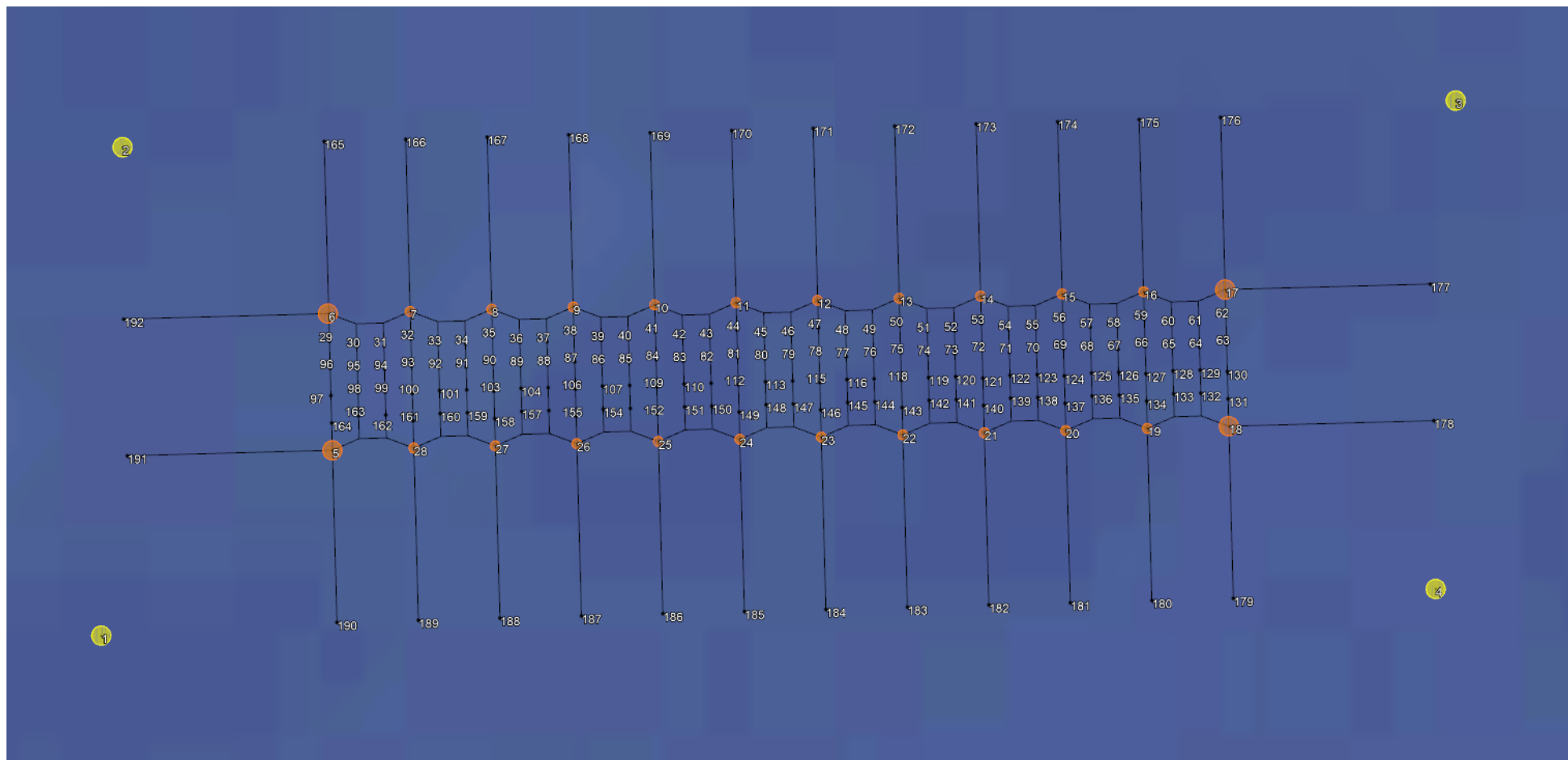
All mariners are requested to remain aware of the cable-laying operations and maintain 1 NM clearance of the cable ship.

Pos	Latitude			Longitude		
Grover Beach						
1	35	7.335	N	120	37.920	W
2	35	7.335	N	120	37.920	W
3	35	7.037	N	120	38.784	W
4	35	6.989	N	120	38.924	W
5	35	6.877	N	120	39.253	W
6	35	6.804	N	120	39.465	W
7	35	5.872	N	120	40.614	W
8	34	58.839	N	120	49.313	W
9	34	57.707	N	120	50.755	W
10	34	56.078	N	120	52.681	W
11	34	54.672	N	120	54.412	W
12	34	53.398	N	120	54.938	W
13	34	51.986	N	120	55.562	W
14	34	51.195	N	120	56.072	W
15	34	47.588	N	120	57.320	W
16	34	46.829	N	120	57.826	W
17	34	44.841	N	120	59.262	W
18	34	41.840	N	121	1.619	W
19	34	40.282	N	121	2.846	W
20	34	39.576	N	121	4.199	W
21	34	39.322	N	121	4.685	W
22	34	39.039	N	121	5.227	W
23	34	38.647	N	121	5.977	W
24	34	34.539	N	121	9.255	W
25	34	33.823	N	121	10.314	W
26	34	31.331	N	121	14.180	W
27	34	29.774	N	121	17.003	W

Pos	Latitude			Longitude		
28	34	28.918	N	121	19.760	W
29	34	28.752	N	121	20.295	W
30	34	27.345	N	121	23.869	W
31	34	24.681	N	121	32.287	W
32	34	24.541	N	121	32.789	W
33	34	23.565	N	121	34.350	W
34	34	23.179	N	121	34.967	W
35	34	22.693	N	121	35.746	W
36	34	17.101	N	121	44.689	W
37	34	15.861	N	121	48.032	W
38	34	15.251	N	121	49.674	W
39	34	14.582	N	121	50.489	W
40	34	13.739	N	121	51.505	W
41	34	13.236	N	121	54.122	W
42	34	13.864	N	122	1.602	W
43	34	13.842	N	122	2.441	W
44	34	13.796	N	122	4.171	W
45	34	11.240	N	122	10.811	W
46	34	10.891	N	122	13.048	W
47	34	10.592	N	122	14.960	W
48	34	11.294	N	122	17.771	W
49	34	11.980	N	122	20.517	W
50	34	14.832	N	122	24.245	W
51	34	15.603	N	122	25.253	W
52	34	18.682	N	122	29.636	W
53	34	28.667	N	122	59.792	W
54	34	33.791	N	123	15.265	W
55	34	37.745	N	123	20.108	W
56	34	40.636	N	123	23.651	W
57	34	43.035	N	123	25.249	W
58	34	48.860	N	123	29.130	W
59	34	54.548	N	123	32.925	W

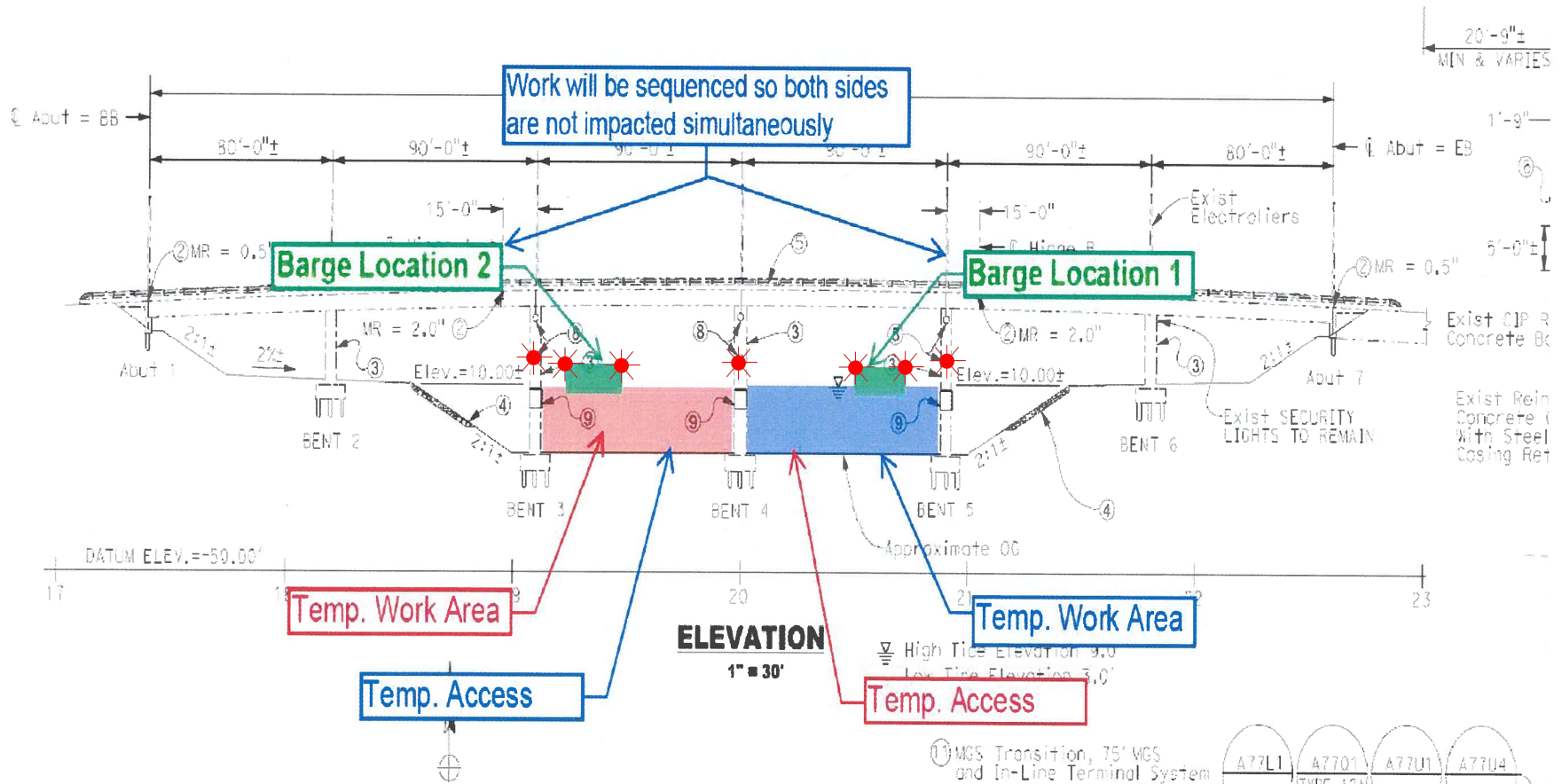
Pos	Latitude			Longitude		
60	34	55.606	N	123	33.631	W
61	34	55.686	N	123	33.684	W
62	34	58.027	N	123	37.527	W
63	34	58.911	N	123	42.443	W
64	34	58.718	N	123	47.607	W
65	34	58.175	N	123	49.693	W
66	34	57.416	N	123	52.611	W
67	34	56.089	N	123	54.526	W
68	34	55.671	N	123	55.130	W
69	34	54.829	N	123	58.971	W
70	34	55.254	N	124	2.883	W
71	34	57.090	N	124	6.753	W
72	34	57.395	N	124	7.397	W
73	34	58.794	N	124	13.346	W
74	34	59.142	N	124	18.713	W
75	34	57.632	N	124	22.462	W
76	34	56.776	N	124	24.700	W
77	34	51.983	N	124	31.417	W
78	34	50.214	N	124	33.871	W
79	34	47.363	N	124	50.242	W
80	34	46.899	N	124	52.902	W
81	34	49.567	N	125	7.605	W
82	34	51.661	N	125	13.291	W
83	34	53.957	N	125	15.325	W
84	35	2.728	N	125	22.954	W
85	35	7.609	N	125	27.172	W
86	35	9.348	N	125	28.676	W
87	35	21.287	N	125	53.825	W
88	35	29.527	N	126	6.798	W
89	35	29.870	N	126	7.390	W
90	35	31.059	N	126	9.863	W
US EEZ						

JUNO CABLE MARINE ROUTE COORDINATES



Rehabilitation of the Channel Islands Blvd West Bridge (Edison Canal) over Channel Islands Harbor

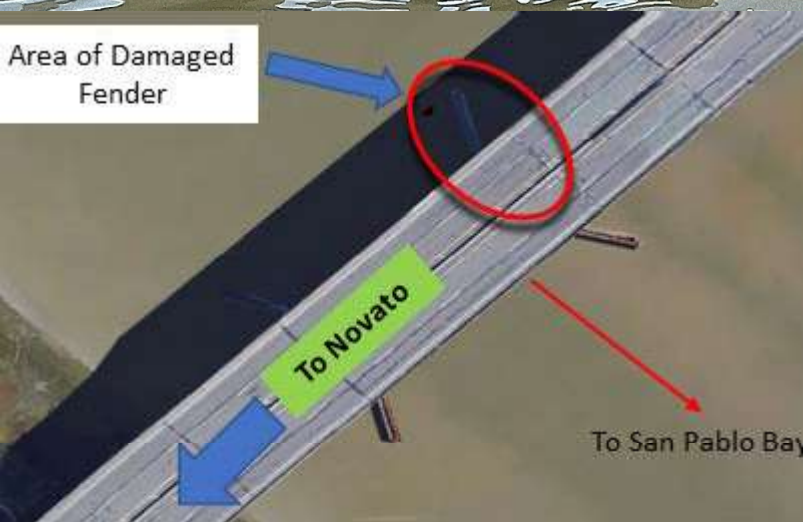
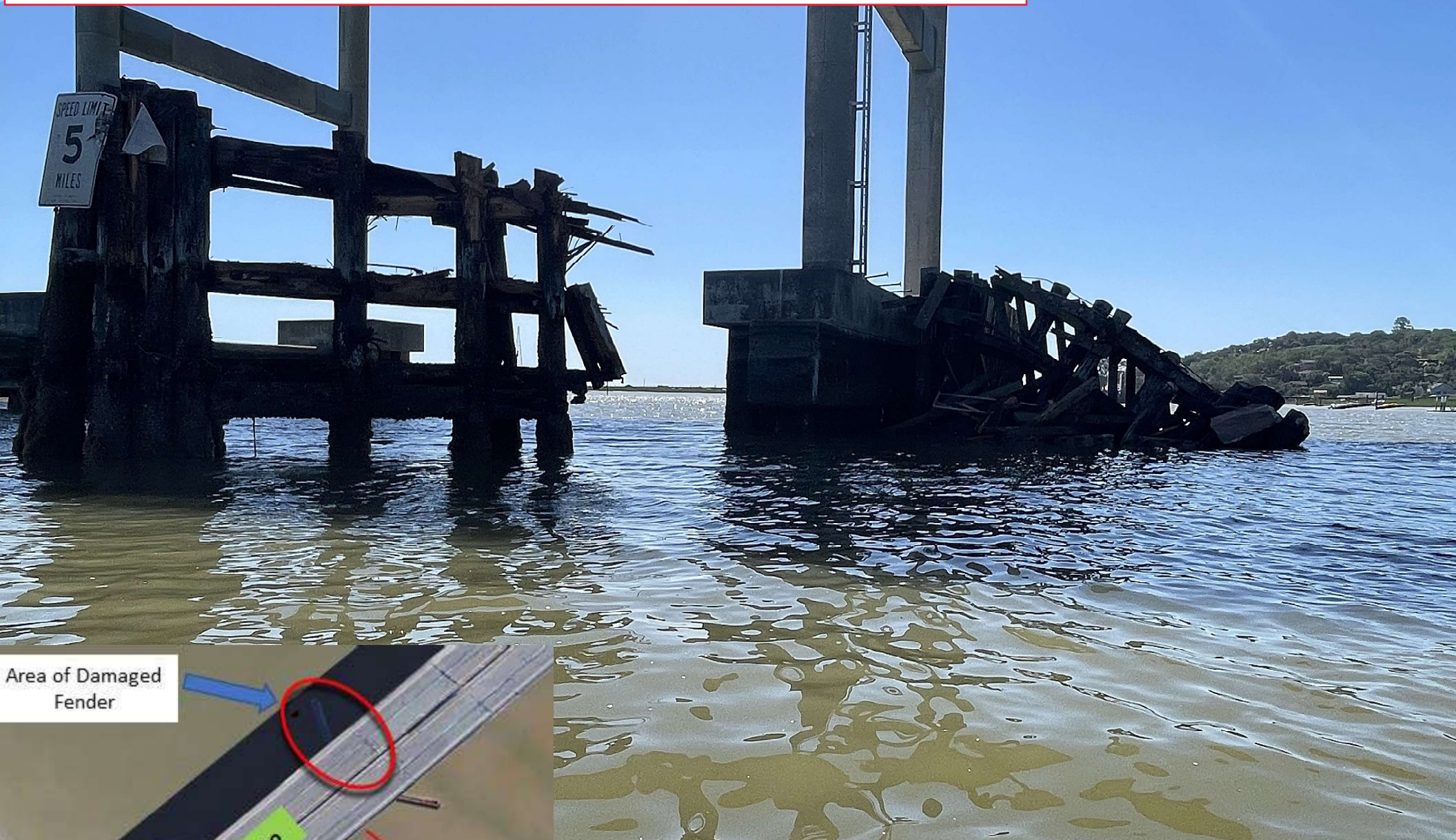
Flexi-Float and Cofferdam Lighting



The upstream and downstream ends of the temporary cofferdams and each corner of each flexi-float barge shall be lighted at night with steady burning red lights visible at 2,000 yards by approaching vessels. Only one span will be worked on at any one time, leaving the other span available for mariners.

Fender Damage

Highway 37 Bridge, mile 1.0, Petaluma River



Damaged upstream northwest fenders. Part of fender system encroaching 20-30 feet in main navigation span, unknown encroachment underwater. Mariners are urged to use extreme caution when transiting the bridge. The damaged system may not offer protection for vessels or the bridge is contact is made.

4 ALBERT EMBANKMENT
LONDON SE1 7SR
Telephone: +44 (0)20 7735 7611 Fax: +44 (0)20 7587 3210

COLREG.2/Circ.78
28 November 2022

TRAFFIC SEPARATION SCHEMES AND ASSOCIATED MEASURES

1 The Maritime Safety Committee, at its 106th session (2 to 11 November 2022), having considered the recommendation made by the Sub-Committee on Navigation, Communications and Search and Rescue at its ninth session (21 to 30 June 2022), and in accordance with the *Procedure for the adoption and amendment of traffic separation schemes, routing measures other than traffic separation schemes, including designation and substitution of archipelagic sea lanes, and ship reporting systems* (resolution A.858(20)), adopted traffic separation schemes and associated measures, as follows:

- .1 amended traffic separation schemes and associated measures *Approaches to the Chornomorsk, Odesa and Pivdennyi ports*, which replace the existing traffic separation schemes *Between the ports of Odessa and Ilichevsk* and *In the approaches to the ports of Odessa and Ilichevsk* (COLREG.2/Circ.14, paragraphs 1.1.2 and 1.1.3); and
- .2 amendments to the traffic separation scheme *In the Santa Barbara Channel* (COLREG.2/Circ.64, annex 6),

as set out in annexes 1 and 2, respectively.

2 Accordingly, the aforementioned traffic separation schemes and associated measures will be implemented at 0000 hours UTC on 1 June 2023.

ANNEX 2

AMENDMENTS TO THE TRAFFIC SEPARATION SCHEME "IN THE SANTA BARBARA CHANNEL"

In the Santa Barbara Channel

(Reference charts: United States 18700, 2013 edition; 18720, 2020 edition; and 18721, 2009 edition.)

Note: These charts are based on North American 1983 datum)

Part II

Between Point Conception and Point Arguello

The description of the traffic separation scheme in part II "Between Point Conception and Point Arguello" is replaced by the following:

- (a) A separation zone is bounded by a line connecting the following geographical positions:

(1) 34°20'.84 N, 120°30'.28 W (13) 34°29'.15 N, 121°06'.94 W
(6) 34°19'.88 N, 120°30'.59 W (14) 34°28'.19 N, 121°07'.26 W

- (b) A traffic lane for westbound traffic is established between the separation zone and a line connecting the following geographical positions:

(7) 34°21'.80 N, 120°29'.96 W (15) 34°30'.11 N, 121°06'.63 W

- (c) A traffic lane for eastbound traffic is established between the separation zone and a line connecting the following geographical positions:

(12) 34°18'.92 N, 120°30'.91 W (16) 34°27'.23 N, 121°07'.57 W

4 ALBERT EMBANKMENT
LONDON SE1 7SR
Telephone: +44 (0)20 7735 7611 Fax: +44 (0)20 7587 3210

SN.1/Circ.342
28 November 2022

ROUTEING MEASURES OTHER THAN TRAFFIC SEPARATION SCHEMES

1 The Maritime Safety Committee, at its 106th session (2 to 11 November 2022), having considered the recommendation made by the Sub-Committee on Navigation, Communications and Search and Rescue at its ninth session (21 to 30 June 2022), and in accordance with the *Procedure for the adoption and amendment of traffic separation schemes, routeing measures other than traffic separation schemes, including designation and substitution of archipelagic sea lanes, and ship reporting systems* (resolution A.858(20)), adopted routeing measures other than traffic separation schemes, as follows:

- .1 recommended route *Off the coast of Shio-no-Misaki*;
- .2 amendments to areas to be avoided *Off the California coast* (resolution A.711(17));
- .3 no anchoring area *In the southern portion of Pulley Ridge*; and
- .4 recommendation on navigation for containerships in the traffic separation schemes *Off Vlieland, Vlieland North and Vlieland Junction, Terschelling-German Bight, Off Friesland and German Bight western approach*,

as set out in annexes 1 to 4, respectively.

2 Accordingly, the aforementioned routeing measures will be implemented at 0000 hours UTC on 1 June 2023.

ANNEX 2

AMENDMENTS TO AREAS TO BE AVOIDED "OFF THE CALIFORNIA COAST"

Off the California coast

(Reference charts: United States 18700, 2013 edition; 18720, 2020 edition; 18721, 2009 edition.

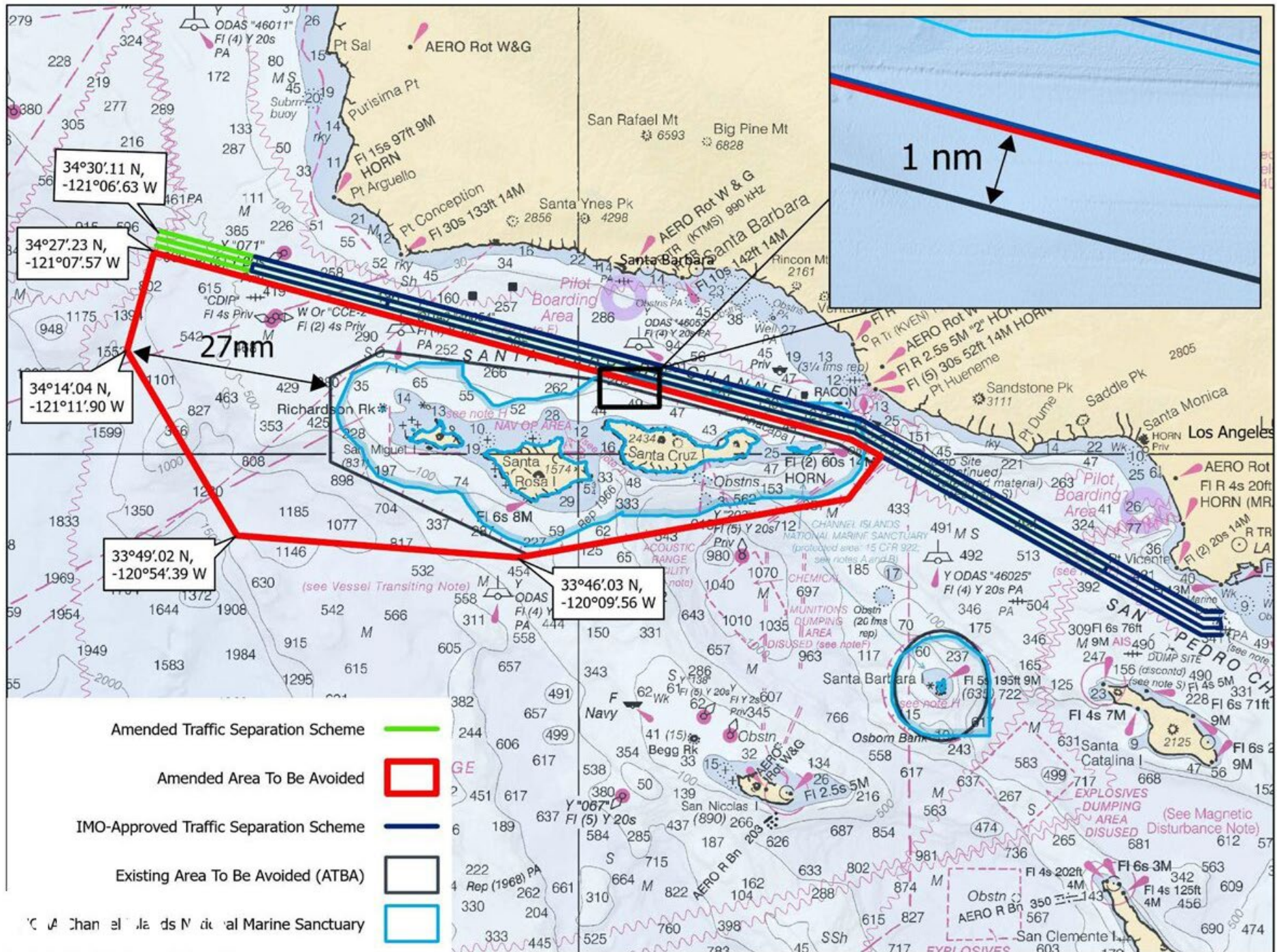
Note: These charts are based on North American 1983 datum.)

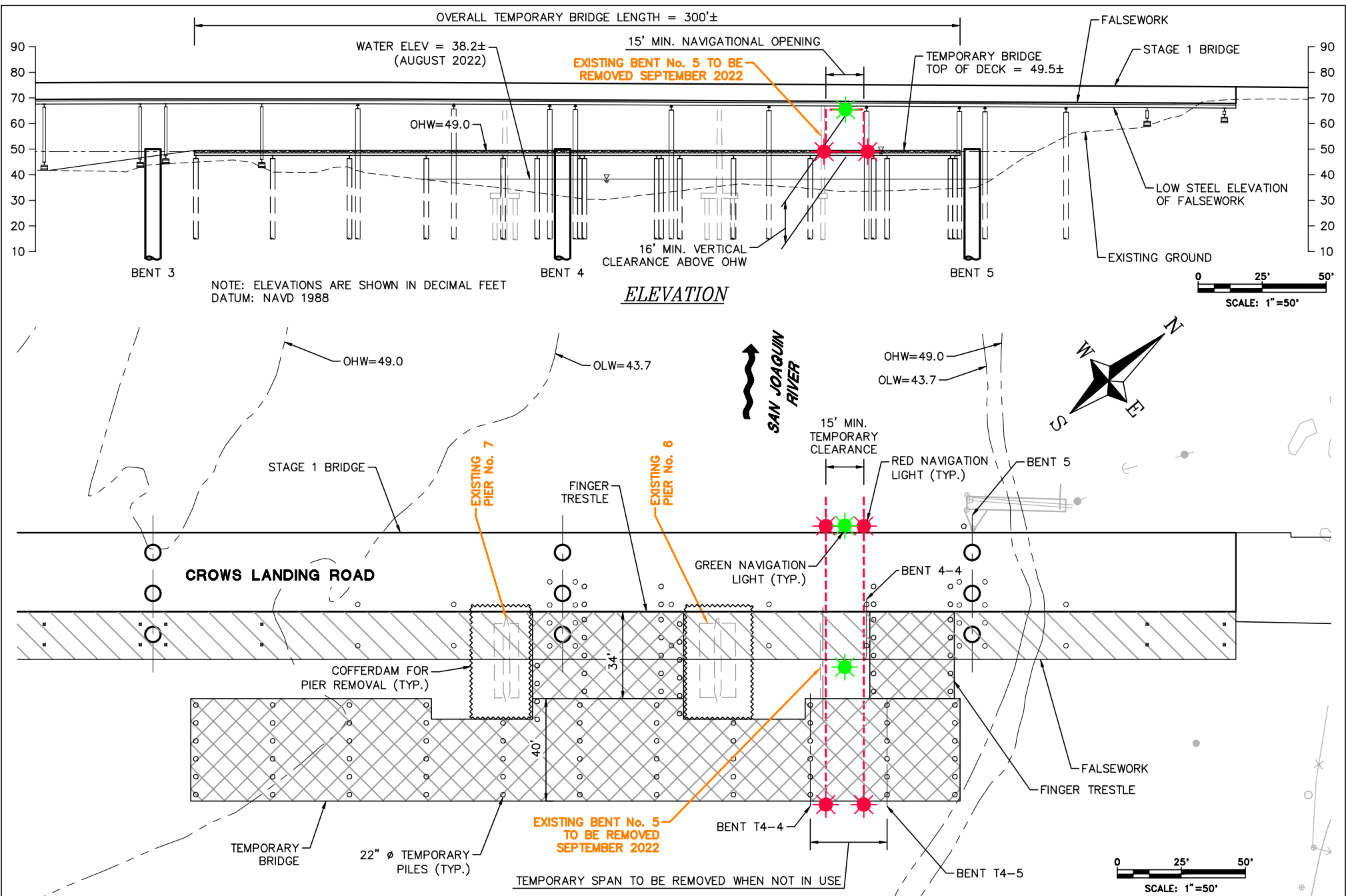
Description of the area to be avoided

- (a) **In the region of San Miguel, Santa Rosa, Santa Cruz and Anacapa Islands off the coast of southern California**

The existing area to be avoided is replaced by the area bounded by a line connecting the following geographical positions:

- (1) 34°27'.23 N, 121°07'.57 W
- (2) 34°02'.01 N, 119°16'.56 W
- (3) 33°59'.77 N, 119°11'.85 W
- (4) 33°54'.01 N, 119°16'.87 W
- (5) 33°46'.03 N, 120°09'.56 W
- (6) 33°49'.02 N, 120°54'.39 W
- (7) 34°14'.04 N, 121°11'.90 W





Temporary Navigation Lighting-Crows Landing Bridge Replacement Project - San Joaquin River

The temporary bridge, the replacement bridge and existing bridge will be lighted at night with two red lights marking the temporary navigation channel. The temporary falsework will be lighted, upriver and downriver, with green lights marking the center of the temporary navigation channel. During construction the temporary navigation channel will provide a horizontal clearance of 15 feet and a vertical clearance at Ordinary High Water of 16 feet.