



U.S. Department  
of Homeland Security  
**United States  
Coast Guard**

---

## LOCAL NOTICE TO MARINERS

**District: 9**

**Week: 44/24**

Issued by: Commander (dpw)  
Ninth Coast Guard District  
1240 East Ninth Street,  
Cleveland, OH 44199-2060  
Telephone: (571) 608-1683

Direct questions about this LNM to the above address.

All distances in this publication are STATUTE MILES unless otherwise noted.\*

\*District Nine Internet Address\* <https://www.atlanticarea.uscg.mil/Our-Organization/District-9/>

\*District Nine Local Notice to Mariners email Address\* [D09-DG-District-D9-LocalNoticetoMariners@uscg.mil](mailto:D09-DG-District-D9-LocalNoticetoMariners@uscg.mil)

\*\* Navigation Information Service watchstander, 24 hours a day at (703) 313-5900 \*\* \*\*Internet Address\*\* <https://www.navcen.uscg.gov/>

Light List Reference: Commandant Publication P16502.7, VOL VII, 2023 Edition

Coast Pilot Reference: 2024 U.S. Coast Pilot 6 Great Lakes 54th Edition

Coast Pilots, along with corrections are available at: <https://nauticalcharts.noaa.gov/publications/coast-pilot/index.html>

The Local Notice to Mariners is available on the Internet at <https://www.navcen.uscg.gov/local-notices-to-mariners-by-cg-district> You will also have links to other government agencies- web pages including the US Army Corps of Engineers and the National Ocean Service.

### REPORT DISCREPANCIES IN AIDS TO NAVIGATION TO THE NEAREST COAST GUARD UNIT

The United States Coast Guard Navigation Information Service (NIS), operated by the USCG Navigation Center, is staffed 24 hours a day, 7 days a week. The NIS provides information on the current operational status, effective policies, and general information for GPS and DGPS. The

NIS also disseminates Safety Broadcasts (BNM), Local Notice to Mariners (LNM), and the latest Notice Advisory to Navstar Users (NANU). NANU notices can be obtained via email subscription through the USCG Navigation Center website: <https://cgls.uscg.mil/mailman/listinfo/nanu>. In addition, the NIS investigates all reports of degradation or loss of GPS, DGPS or AIS service. Users are encouraged to report all degradation or loss of radio navigation services to the NIS via any of the following: Phone: (703) 313-5900, mail to: [webmaster@smtp.navcen.uscg.mil](mailto:webmaster@smtp.navcen.uscg.mil), or on the internet at: <https://www.navcen.uscg.gov>

---

## ABBREVIATIONS

---

### A through H

ADRIFT - Buoy Adrift  
AICW - Atlantic Intracoastal Waterway  
AI - Alternating  
B - Buoy  
BKW - Breakwater  
bl - Blast  
BNM - Broadcast Notice to Mariner  
bu - Blue  
C - Canadian  
CHAN - Channel  
CGD - Coast Guard District  
C/O - Cut Off  
CONT - Contour  
CRK - Creek  
CONST - Construction  
DAYMK/Daymk - Daymark  
DBN/Dbn - Daybeacon  
DBD/DAYBD - Dayboard  
DEFAC - Defaced  
DEST - Destroyed  
DISCON - Discontinued  
DMGD/DAMGD - Damaged  
ec - eclipse  
EST - Established Aid  
ev - every  
EVAL - Evaluation  
EXT - Extinguished  
F - Fixed

### I through O

I - Interrupted  
ICW - Intracoastal Waterway  
IMCH - Improper Characteristic  
INL - Inlet  
INOP - Not Operating  
INT - Intensity  
ISL - Islet  
Iso - Isophase  
kHz - Kilohertz  
LAT - Latitude  
LB - Lighted Buoy  
LBB - Lighted Bell Buoy  
LHB - Lighted Horn Buoy  
LGB - Lighted Gong Buoy  
LONG - Longitude  
LNM - Local Notice to Mariners  
LT - Light  
LT CONT - Light Continuous  
LTR - Letter  
LWB - Lighted Whistle Buoy  
LWP - Left Watching Properly  
MHz - Megahertz  
MISS/MSNG - Missing  
Mo - Morse Code  
MRASS - Marine Radio Activated Sound Signal  
MSLD - Misleading  
N/C - Not Charted  
NGA - National Geospatial-Intelligence Agency

### P through Z

PRIV - Private Aid  
Q - Quick  
R - Red  
RACON - Radar Transponder Beacon  
Ra ref - Radar reflector  
RBN - Radio Beacon  
REBUILT - Aid Rebuilt  
RECOVERED - Aid Recovered  
RED - Red Buoy  
REFL - Reflective  
RRL - Range Rear Light  
RELIGHTED - Aid Relit  
RELOC - Relocated  
RESET ON STATION - Aid Reset on Station  
RFL - Range Front Light  
RIV - River  
RRASS - Remote Radio Activated Sound Signal  
s - seconds  
SEC - Section  
SHL - Shoaling  
si - silent  
SIG - Signal  
SND - Sound  
SPM - Single Point Mooring Buoy  
SS - Sound Signal  
STA - Station  
STRUCT - Structure  
St M - Statute Mile

fl - flash  
FI - Flashing  
G - Green  
GIWW - Gulf Intracoastal Waterway  
HAZ - Hazard to Navigation  
HBR - Harbor  
HOR - Horizontal Clearance  
HT - Height

NO/NUM - Number  
NOS - National Ocean Service  
NW - Notice Writer  
OBSCU - Obscured  
OBST - Obstruction  
OBSTR - Obstruction  
Oc - Occulting  
ODAS - Anchored Oceanographic Data Buoy

TEMP - Temporary Aid Change  
TMK - Topmark  
TRLB - Temporarily Replaced by Lighted Buoy  
TRLT - Temporarily Replaced by Light  
TRUB - Temporarily Replaced by Unlighted Buoy  
USACE - Army Corps of Engineers  
W - White  
Y - Yellow

**Additional Abbreviations Specific to this LNM Edition:**

ADRIFT - Buoy Adrift  
AICW - Atlantic Intracoastal Waterway  
Al - Alternating  
B - Buoy  
BKW - Breakwater  
bl - Blast  
BNM - Broadcast Notice to Mariner  
bu - Blue  
C - Canadian  
CHAN - Channel  
CGD - Coast Guard District  
C/O - Cut Off  
CONT - Contour  
CRK - Creek  
CONST - Construction  
DAYMK/Daymk - Daymark  
DBN/Dbn - Daybeacon  
DBD/DAYBD - Dayboard  
DEFAC - Defaced  
DEST - Destroyed  
DISCON - Discontinued  
DMGD/DAMGD - Damaged  
ec - eclipse  
EST - Established Aid  
ev - every  
EVAL - Evaluation  
EXT - Extinguished  
F - Fixed  
fl - flash  
FI - Flashing  
G - Green  
GIWW - Gulf Intracoastal Waterway  
HAZ - Hazard to Navigation  
HBR - Harbor  
I - Interrupted  
ICW - Intracoastal Waterway  
IMCH - Improper Characteristic  
INL - Inlet  
INOP - Not Operating  
INT - Intensity  
ISL - Islet  
Iso - Isophase  
kHz - Kilohertz  
LAT - Latitude  
LB - Lighted Buoy  
LBB - Lighted Bell Buoy  
LHB - Lighted Horn Buoy  
LGB - Lighted Gong Buoy  
LONG - Longitude  
LNM - Local Notice to Mariners  
LT - Light  
LT CONT - Light Continuous  
LTR - Letter  
LWB - Lighted Whistle Buoy  
LWP - Left Watching Properly  
MHz - Megahertz  
MISS/MSNG - Missing  
Mo - Morse Code  
MRASS - Marine Radio Activated Sound Signal  
MSLD - Misleading  
N/C - Not Charted  
NGA - National Geospatial Intelligence Agency  
NO/NUM - Number  
NOS - National Ocean Service

NW - Notice Writer  
OBSCU - Obscured  
OBST - Obstruction  
OBSTRR - Obstruction  
PRIV - Private Aid  
Q - Quick  
R - Red  
RACON - Radar Transponder Beacon  
Ra ref - Radar reflector  
RBN - Radio Beacon  
REBUILT - Aid Rebuilt  
RECOVERED - Aid Recovered  
RED - Red Buoy  
REFL - Reflective  
RRL - Range Rear Light  
RELIGHTED - Aid Relit  
RELOC - Relocated  
RESET ON STATION - Aid Reset on Station  
RFL - Range Front Light  
RIV - River  
RRASS - Remote Radio Activated  
Sound Signal  
s - seconds  
SEC - Section  
SHL - Shoaling  
si - silent  
SIG - Signal  
SND - Sound  
SPM - Single Point Mooring Buoy  
SS - Sound Signal  
STA - Station  
STRUCT - Structure  
St M - Statute Mile  
TEMP - Temporary Aid Change  
TMK - Topmark  
TRLB - Temporarily Replaced by Lighted Buoy  
TRLT - Temporarily Replaced by Light  
TRUB - Temporarily Replaced by Unlighted Buoy  
USACE - Army Corps of Engineers

---

## SECTION I - SPECIAL NOTICES

This section contains information of special concern to the Mariner.

---

### Delay in changes to the USCG Local Notice to Mariners (LNM) and Light Lists

Due to the impact of Hurricane Helene, the U.S. Coast Guard Navigation Center (NAVCEN) will be unable to launch its modernized Local Notices to Mariners (LNMs) and Light List (LL) application on the originally planned date of September 30th.

Please note that, despite this delay, the following resources will continue to be available on the NAVCEN website as planned:

1. Weekly Local Notices to Mariners (pdf)
2. Light Lists (pdf)
3. Daily LNM Discrepancies and Temporary Changes (XML)
4. Weekly Light List files (PDF, XML)

We are working diligently to reschedule the app's launch and will provide an update with the new release date as soon as it becomes available.

For questions or comments, you may contact us at [navcenwebteam@uscg.mil](mailto:navcenwebteam@uscg.mil) or via our contact us page (please select "LNMs or Light Lists" from the Subject pull-down menu).

LNM: 40/24

### Changes to the USCG Local Notice to Mariners (LNM) and Light Lists

The U.S. Coast Guard Navigation Center announces upcoming changes to the Local Notice to Mariners (LNM) and the Light List, as part of our efforts to modernize and improve the accessibility, accuracy, and overall user experience for mariners and other stakeholders.

What Is Changing?

1. Transition From Paper Charts: In January 2025, NOAA will discontinue the production of all paper charts. In alignment with this change, the Coast Guard will transition from using NOAA Paper Chart Numbers and Editions/Dates for disseminating Marine Safety Information (MSI) to using Official Waterway Names.

2. How You Will Access LNMs and Light Lists: The LNM and Light List data will now be available in a geospatial format, which will allow you to

visualize information interactively on a map/chart. You can use your mouse wheel or the +/- buttons in the upper left portion of the screen to zoom in or out and navigate to your desired area on the map/chart. Once the area is displayed, you can generate a PDF of the LNM or Light List for that specific area, which you can then save and/or print. Alternatively, you can use a fillable form on our website to select your waterway by name from the Light List and generate the LNM or Light List.

3. LNM and Light List Data Refresh Rate: LNM data will be refreshed every fifteen minutes. Light List data will be refreshed every 24 hours. This will give you a much more up-to-date operating picture, designed to enhance your efficiency and improve safety in your area of transit or planned routes.

4. Elimination of Weekly Files: Weekly LNMs, Weekly Light List Correction Files, Daily Discrepancy Files, and the Summary of Light List Changes will no longer be published to focus on providing the most up-to-date and accessible format. In the near future, we will also publish an Application Programming Interface (API) for interested parties to access the data externally.

#### Why Are These Changes Being Made?

The modernization of MSI delivery is designed to improve the U.S. Coast Guard's aid-to navigation data management and dissemination capabilities. By providing frequent updates, geospatial visualization, and digital access, we hope to achieve our goals of:

- Enhancing Maritime Safety: By delivering the most current and precise information, mariners can make better-informed decisions, reducing the risk of accidents and ensuring safer navigation.
- Improving Accessibility: The shift to geospatial visualization makes it easier for all users, from commercial mariners to recreational boaters, to stay informed.
- Increasing Efficiency: The integration of LNM and Light List data into a geospatial format to simplify the gathering of safety information and facilitate easy route planning.

#### When Will These Changes Take Effect?

The transition to the modernized LNM and Light List platform (the Navigation Center website) will be completed by Monday, September 30th.

#### How to Access the New Features?

For any questions or assistance, please visit our Contact Us Page, select 'LNMs or Light Lists' from the Subject dropdown, and submit your inquiry.

Thank you for your continued support as we work to improve the safety and efficiency of maritime navigation.

LNM: 38/24

#### **Cancellation of NOAA Paper and Raster Nautical Charts**

The National Oceanic and Atmospheric Administration (NOAA) is undertaking a multi-year program to end production and maintenance of its suite of over 1,000 traditional paper nautical charts and all associated raster chart products and services, including: Print-on-Demand (POD) paper nautical charts, Full-size chart PDF files, BookletChart™ PDF files, NOAA raster navigational charts (NOAA RNC®), the NOAA RNC tile service, and the online RNC viewer.

Six months notice of the intent to cancel a specific chart is provided in a "Last Edition" notice. The final cancellation of a chart is made in a "Canceled" notice. Both types of notices will appear in LNM Section IV, "Chart Correction." A comprehensive list of all canceled NOAA charts is available at: <http://www.charts.noaa.gov/MCD/Dole.shtml>.

Traditional paper nautical chart production is ending to enable the creation and maintenance of larger scale, more up-to-date, higher quality coverage of NOAA's electronic navigational chart (NOAA ENC®) product. This will significantly enhance the amount of charted detail available to mariners. More information about NOAA's program to sunset traditional paper charts is on the NOAA Coast Survey website at: <https://nauticalcharts.noaa.gov/charts/farewell-to-traditional-nautical-charts.html>

An online NOAA Custom Chart application at: <https://devgis.charttools.noaa.gov/pod> is available to create chart images from ENC data, which may then be printed. Notices to Mariners will not be issued for NOAA Custom Charts.

LNM: 04/20

#### **PUBLICATION OF NVIC 03-23 GUIDANCE ON NAVIGATIONAL SAFETY IN AND AROUND OFFSHORE RENEWABLE ENERGY INSTALLATIONS (OREI)**

The Coast Guard has published Navigation and Vessel Inspection Circular (NVIC) 03-23: Guidance on Navigational Safety In and Around Offshore Renewable Energy Installations (OREI) to highlight considerations when planning and undertaking voyages in the vicinity of offshore renewable energy installations (OREI) in U.S. waters. The prudent mariner should review and utilize this NVIC to make an informed risk assessment prior to navigating within or in the vicinity of an OREI. Important Maritime Safety Information (MSI) relating to OREIs is distributed by Local or Broadcast Notices to Mariners (LNM or BNM) promulgated by Coast Guard Districts. Marine Safety Information Bulletins (MSIB) released by the local Captain

of the Port (COTP) may be issued to provide supplemental information. Interested parties should contact the Office of Navigation Systems at CGNAV@uscg.mil with any questions or feedback.

LNM: 47/23

#### **MERCHANT MARINER CREDENTIAL**

The U.S. Coast Guard announced a new merchant mariner credential (MMC) set to launch on March 1, 2024. This milestone marks the first comprehensive revision of the mariner credential in nearly a decade and is strategically designed to enhance both quality of service and security within the Marine Transportation System (MTS). U.S. Coast Guard Marine Safety Information Bulletin (MSIB) 01-24, New Merchant Mariner Credential Passport Booklet Replacement, has been posted on the DCO's MSIB Site and announced at the National Maritime Center (CG-NMC) Home Page (uscg.mil). Please visit these resources for more information on the credential.

LNM: 09/24

#### **USACE NOTICE TO NAVIGATION INTERESTS**

Current Federal Channel conditions, shoaling, and the most recent channel surveys are available at the following Army Corps of Engineers web sites:

Buffalo: <http://www.lrb.usace.army.mil/>  
Detroit: <http://www.lre.usace.army.mil/>  
Chicago: <http://www.lrc.usace.army.mil/>  
Rock Island: <http://www.mvr.usace.army.mil/>  
St. Paul: <https://www.mvp.usace.army.mil/>

LNM: 28/12

#### **GREAT LAKES - Great Lakes Water Levels**

See Enclosure 1

The current and four week expected water level table for the Great Lakes, Connecting Channels and the St. Lawrence River, will be published in Enclosure 1 following SECTION VIII - LIGHT LIST CORRECTIONS of the Local Notice to Mariner or by visiting the link below:

<https://www.lre.usace.army.mil/Missions/Great-Lakes-Information/Great-Lakes-Water-Levels/Water-Level-Forecast/Connecting-Channels-Forecast/>

LNM: 32/20

#### **LAKE ST. CLAIR - St. Clair Cut-off LB "CO" LLNR 8590**

The Coast Guard will be temporarily deploying a buoy of reduced size at St. Clair Cut-Off Preferred Channel Lighted Buoy "CO" (LLNR 8590) in Lake St. Clair, MI. The visual and operational radar range of the buoy will be reduced. The lighted signal range will remain unchanged. The temporary change is in response to delays in the permanent buoy's off-season refurbishment. Upon completion, the permanent buoy will be redeployed back on station. All mariners are requested to use caution while transiting the area.

LNM: 15/24

#### **ST. MARYS RIVER - American Canal - Chart 14884**

Northeast Pierhead Light (LLNR 14205) The U. S. Army Corps of Engineers will be relocating this light to the top of their new camera tower. As soon as the position and height of the light's new location is confirmed it will be advertised in Section VIII - Light List Corrections of the LNM.

LNM: 10/21

#### **MICHIGAN INLAND ROUTE**

Various aids to navigation in the Michigan Inland Route will be repaired and replaced by marine contractors during the advertised period. The aids will be worked from north to south and will be periodically disestablished while servicing vessels are on site. The impacted aids include:

- Cheboygan River Buoy 1 (LLNR 11806) – will be replaced with a fixed pile daymark.
- Mullett Lake Lighted Buoy 24 (LLNR 11900) - will be replaced with a lighted pile.
- Mullett Lake Lighted Buoy 24A (LLNR 11915) – will be replaced with a lighted pile.
- Indian River Buoy 25 (LLNR 11920) – will be replaced with a fixed pile daymark.
- Indian River Daybeacon 28 (LLNR 11935).
- Indian River Daybeacon 40 (LLNR 11980).
- Indian River Daybeacon 45 (LLNR 12005).
- Indian River Daybeacon 62 (LLNR 12070).
- Crooked Lake Temporary Buoy 81 (LLNR 12140) – will be replaced with a fixed pile daymark.
- Crooked Lake Buoy 82 (LLNR 12145) – will be replaced with a fixed pile daymark.
- Crooked Lake Daybeacon 83 (LLNR 12150).
- Crooked Lake Daybeacon 84 (LLNR 12155).
- Crooked Lake Daybeacon 86 (LLNR 12165).
- Crooked Lake Daybeacon 87 (LLNR 12170).

Mariners are urged to use caution while transiting the area.

LNM: 39/24

**LAKE MICHIGAN - Seul Choix Point**

The Coast Guard has received a report of soundings less than charted depth 3.5NM east/southeast of Seul Choix Point at position 45°53'18"N, 085°50'27"W. The area of reduced depth was reported on the east/west Manistique to Lansing Shoal recommended shipping route. Mariners are urged to use caution while transiting the area.

LNM: 06/24

**LAKE MICHIGAN - Algoma**

Algoma Light 1 (LLNR 20980) will be temporarily disestablished for marine construction operations on the south breakwater in Algoma, WI. A temporary flashing white light will be installed each night on the end of the breakwater to assist mariners in identifying the construction area. The permanent aid's anticipated reinstatement date is July 15th, 2024. Mariners are urged to use caution while transiting the area.

LNM: 26/24

**LAKE SUPERIOR - Isle Royale**

The Coast Guard has received a report of a partially submerged spar buoy at position 48°05'49"N, 088°44'12"W, on the north shore of Isle Royale just west of Hawk Island. Mariners are urged to use caution while transiting this area.

LNM: 25-24

**LAKE SUPERIOR – Keweenaw – Chart 14972**

Keweenaw Upper Entrance West Breakwater Light (LLNR 15115) was reported damaged and swept from its location on the breakwall. The approximately 20' metal tower is submerged in vicinity of the breakwater at an unknown position. All mariners are urged to use caution when transiting the area.

LNM: 12/23

---

---

**SECTION II - DISCREPANCIES**

This section lists all reported and corrected discrepancies related to Aids to Navigation in this edition. A discrepancy is a change in the status of an aid to navigation that differs from what is published or charted.

---

**DISCREPANCIES (FEDERAL AIDS)**

LLNR	Aid Name	Status	Chart No.	BNM Ref.	LNM St	LNM End
4155	Cleveland Harbor East Basin Channel Lighted Buoy 8	LT EXT		EGL190-24	37/24	
6900	East Outer Channel Lighted Buoy 2	LT IMCH	14820		41/24	
6905	East Outer Channel Lighted Buoy 3	OFF STATION			41/24	
8570	Lake St. Clair Lighted Buoy 30	LT EXT			41/24	
9578	St. Clair Flats Lighted Danger Buoy C	STRUCT MISSING			40/24	
10035	Lake Huron Cut Lighted Buoy 1	OFF STA		D041-24	23/24	
13030	Munuscong Channel (Upbound) Junction Light ML	AIS INOP			21/24	
13070	Munuscong Channel (Upbound) Lighted Buoy 9	AIS INOP			05/24	
13125	Sailors Encampment Channel Lighted Buoy 21	AIS INOP			05/24	
13475	West Neebish Channel (Downbound) Upper Range Rear Light	DAYMK MISSING			36/23	
13645	Sawmill Point Lighted Buoy 22	AIS INOP			05/24	
13695	Moon Island Lighted Buoy 13	AIS INOP			05/24	
13955	Upper Nicolet Range Front Light	DAYMK MISSING			21/24	
13960	Upper Nicolet Range Rear Light	DAYMK MISSING		NGL004-24	26/23	
14050	Six Mile Point Range Rear Light	DAYMK MISSING		S079-23	10/21	
14495	Gros Cap Reefs Light (C)	LT IMCH			39/24	
14880	Keweenaw Waterway Light 25	STRUCT DEST/TRLB		NGL047-24	19/24	
15115	Keweenaw Upper Entrance West Breakwater Light	STRUCT DEST		S015-23	02/23	

15840	Duluth Harbor Breakwater Isolated Danger Buoy	MISSING			29/24
17210	Canoe Channel Daybeacon 8	STRUCT DEST/TRUB			23/22

**DISCREPANCIES (FEDERAL AIDS) CORRECTED**

LLNR	Aid Name	Status	Chart No.	BNM Ref.	LNM St	LNM End
100	St. Lawrence Seaway Lighted Buoy 17	WATCHING PROPERLY			42/24	44/24
810	Galop Island East Range Front Light	WATCHING PROPERLY			41/24	45/24
865	St. Lawrence Seaway Lighted Buoy 127	WATCHING PROPERLY			43/24	45/24
1400	Point Vivian Leading Light	WATCHING PROPERLY			42/24	45/24
7170	Grosse Ile South Channel Range Rear Light	WATCHING PROPERLY			43/24	45/24
9745	Russell Island Shoal Lighted Buoy RI	RELIGHTED			41/24	44/24
9790	Marine City Shoal Lighted Buoy 40	WATCHING PROPERLY			44/24	46/24
10575	Saginaw Bay Channel Lighted Buoy 2	RELIGHTED			40/24	45/24
10760	Essexville Range Front Light	RELIGHTED			43/24	45/24
10765	Essexville Range Rear Light	RELIGHTED			43/24	45/24
13065	Munuscong Channel (Upbound) Lighted Buoy 8	WATCHING PROPERLY			42/24	44/24
14020	Frechette Point Range Rear Light	WATCHING PROPERLY			41/24	44/24

**DISCREPANCIES (PRIVATE AIDS)**

LLNR	Aid Name	Status	Chart No.	BNM Ref.	LNM St	LNM End
90	Aluminum Foundry Water Intake Buoy	MISSING	14761		41/24	
336.1	Lake St. Lawrence Yacht Club Channel Buoy 1	DAYMK IMCH	14762		41/24	
336.15	Lake St. Lawrence Yacht Club Channel Buoy 2	DAYMK IMCH	14762		41/24	
336.2	Lake St. Lawrence Yacht Club Channel Buoy 3	DAYMK IMCH	14762		41/24	
336.25	Lake St. Lawrence Yacht Club Channel Buoy 4	DAYMK IMCH	14762		41/24	
336.3	Lake St. Lawrence Yacht Club Channel Buoy 5	DAYMK IMCH	14762		41/24	
336.35	Lake St. Lawrence Yacht Club Channel Buoy 6	DAYMK IMCH	14762		41/24	
336.4	Lake St. Lawrence Yacht Club Channel Buoy 7	DAYMK IMCH	14762		41/24	
336.55	Lake St. Lawrence Yacht Club Channel Buoy 10	DAYMK IMCH	14762		41/24	
336.6	Lake St. Lawrence Yacht Club Channel Buoy 11	DAYMK IMCH	14762		41/24	
336.65	Lake St. Lawrence Yacht Club Channel Buoy 12	DAYMK IMCH	14762		41/24	
1930	Black River Bay Buoy 10	OFF STA			38/24	
2343.2	Braddock Bay Light 2	LT EXT			41/24	
2343.2	Braddock Bay Light 2	LT IMCH			41/24	
2343.3	Braddock Bay Light 3	LT EXT			41/24	
2343.4	Braddock Bay Light 4	LT EXT			41/24	
2343.5	Braddock Bay Light 5	LT EXT			41/24	
2343.6	Braddock Bay Light 6	LT IMCH			41/24	
2362	Eagle Creek Marina Entrance Light 3	STRUCT MISSING			41/24	
2363	Eagle Creek Marina Entrance Light 4	STRUCT MISSING			41/24	
3070	Beaver Island State Park West Bulkhead Light	LT IMCH			41/24	
3105	Erie County Water Authority Lighted Intake Buoy ECWA	LT IMCH			41/24	
3165	Tonawanda Intake Crib Light	DBD DMGD			41/24	

3185	North Tonawanda Intake Crib Light	LT IMCH		41/24
3292	Niagara Falls Intake Crib Light	LT EXT		41/24
3295	Niagara Falls Transmission Line Light B	LT EXT		41/24
3310	Buckhorn Island Dike Light 2	LT IMCH		41/24
3315	Buckhorn Island Dike Light 3	LT IMCH		41/24
3335	Big Six Mile Creek Light	DBD DMGD		41/24
3920	Mentor Harbor Light 3	DBD DEST		41/24
4950	Battery Park Marina South Entrance Light	LT EXT		40/24
4965	Sandusky Yacht Club Light 2	LT EXT	D027-24	18/24
5247	Johnson Island Light 1	LT EXT		36/24
6015	Cooley Canal Front Range Light	STRUCT DEST		36/24
6025	Toledo Water Works Intake Crib Lights	LT EXT	D034-24	20/24
8892	ACOE LKSTC Water Sensor Buoy 1	MISSING	D059-24	26/24
8905	St. Clair Municipal Park Entrance Buoy 1	MISSING		24/24
8910	St. Clair Municipal Park Entrance Buoy 2	OFF STA		34/24
8915	St. Clair Municipal Park Entrance Buoy 3	OFF STA		34/24
8920	St. Clair Municipal Park Entrance Buoy 4	OFF STA		34/24
8950	Black Creek Buoy 3	MISSING		34/24
19860	Filtration Plant Breakwater South End Light	LT EXT		23/24
19865	Filtration Plant Breakwater North End Light	LT EXT		23/24
19931	Thirty-First Street Jetty Danger Lighted Buoy A	MISSING		23/24
19932	Thirty-First Street Jetty Danger Lighted Buoy B	MISSING		23/24
19933	Thirty-First Street Jetty Danger Lighted Buoy C	MISSING		23/24
19934	Thirty-First Street Inner Jetty Light	LT EXT		23/24
20470	Racine Launch Basin Entrance Light	LT EXT		22/24
20490	Racine East Harbor Entrance Light 2	LT EXT		28/24
20545	Racine Harbor Light 13	LT EXT		22/24
20681	Lakeshore State Park Entrance Lt 1	LT EXT	M116-24	21/24
20700	Milwaukee City South Pier No. 2 South Light	LT EXT	M165-24	24/24
20729	South Shore Park Entrance Lighted Buoy 1	MISSING		21/24
20730	South Shore Park Entrance Lighted Buoy 2	MISSING		21/24
21405	Shipyard Island Marina North Dock Light	LT IMCH	M199-24	27/24
22015	Oconto Harbor North Pierhead Light 2	LT EXT		39/24

**DISCREPANCIES (PRIVATE AIDS) CORRECTED**

LLNR	Aid Name	Status	Chart No.	BNM Ref.	LNM St	LNM End
2220	Pultneyville Yacht Club Light	WATCHING PROPERLY			41/24	44/24
2245	Pultneyville Entrance Lighted Buoy 3	WATCHING PROPERLY			41/24	44/24
4030	Cleveland Waterworks Intake Crib Light	WATCHING PROPERLY			42/24	44/24
4030	Cleveland Waterworks Intake Crib Light	WATCHING PROPERLY			42/24	44/24
4256	Cashelmara Jetty Light	WATCHING PROPERLY			42/24	44/24
4256	Cashelmara Jetty Light	WATCHING PROPERLY			42/24	44/24
4300	Sheffield Lake Light 1	WATCHING PROPERLY			41/24	44/24
4301	Sheffield Lake Light 2	WATCHING PROPERLY			41/24	44/24



**PLATFORM DISCREPANCIES**

Name	Status	Position	BNM Ref.	LNM St	LNM End
------	--------	----------	----------	--------	---------

None

**PLATFORM DISCREPANCIES CORRECTED**

Name	Status	Position	BNM Ref.	LNM St	LNM End
------	--------	----------	----------	--------	---------

None

**SECTION III - TEMPORARY CHANGES and TEMPORARY CHANGES CORRECTED**

This section contains temporary changes and corrections to Aids to Navigation for this edition. When charted aids are temporarily relocated for dredging, testing, evaluation, or marking an obstruction, a temporary correction shall be listed in Section IV giving the new position.

**TEMPORARY CHANGES**

LLNR	Aid Name	Status	Chart No.	BNM Ref.	LNM St	LNM End
2105	Oswego Harbor West Channel Light 2	TRLB	14786		17/19	
9690	Grande Pointe Light 23	TRLT			47/20	
13710	West Neebish Channel (Downbound) Lighted Buoy 10	DISCONTINUED FOR DREDGING			32/24	
14540	Little Lake Harbor Light 2	DISCONTINUED FOR DREDGING			47/22	
15220	Ontonagon Harbor East Breakwater Light	DISCONTINUED			02/22	
16963	Driftwood Point Light	DISCONTINUED			45/20	
20980	Algoma Light 1	DISCONTINUED			25/24	

**TEMPORARY CHANGES CORRECTED**

LLNR	Aid Name	Status	Chart No.	BNM Ref.	LNM St	LNM End
------	----------	--------	-----------	----------	--------	---------

None

**PLATFORM TEMPORARY CHANGES**

Name	Status	Position	BNM Ref.	LNM St	LNM End
------	--------	----------	----------	--------	---------

None

**PLATFORM TEMPORARY CHANGES CORRECTED**

Name	Status	Position	BNM Ref.	LNM St	LNM End
------	--------	----------	----------	--------	---------

None



NOS

LAST EDITION No new editions of chart 14902 will be published. It will be canceled on 30-Oct-24. Comparable or larger scale Electronic Navigational Chart (ENC) coverage is available. See "Cancellation of NOAA Paper and Raster Nautical Charts" in Section I of this LNM for details. A list of all canceled NOAA charts is at <https://www.charts.noaa.gov/MCD/Dole.shtml>. --

14961 13th Ed. 01-FEB-16 Last LNM: 36/19 NAD 83 44/24

ChartTitle: Lake Superior (Mercator Projection)

Main Panel 1499 LAKE SUPERIOR. Page/Side: A

NOS

LAST EDITION No new editions of chart 14961 will be published. It will be canceled on 30-Oct-24. Comparable or larger scale Electronic Navigational Chart (ENC) coverage is available. See "Cancellation of NOAA Paper and Raster Nautical Charts" in Section I of this LNM for details. A list of all canceled NOAA charts is at <https://www.charts.noaa.gov/MCD/Dole.shtml>. --

**SECTION V - ADVANCE NOTICES**

This section contains advance notice of approved projects, changes to aids to navigation, or upcoming temporary changes such as dredging, etc. Mariners are advised to use caution while transiting these areas.

**SUMMARY OF ADVANCED APPROVED PROJECTS**

<u>Approved Project(s)</u>	<u>Project Date</u>	<u>Ref. LNM</u>
None		

Advance Notice(s)

**LAKE MICHIGAN - Green Bay - Cedar River**

The Coast Guard is evaluating the redesign of the entrance channel at the Cedar River in Western Green Bay, WI. The number of aids to navigation in the channel will be reduced from eleven to seven. The remaining aids will be renamed in order to better identify progression through the channel. The following list of changes is being proposed:

- Cedar River Entrance Lighted Buoy 1 will remain unchanged.
- Cedar River Buoy 4 will be renamed Cedar River Lighted Buoy 2, and the previously unlighted buoy will be lit with a flashing red light.
- Cedar River Buoy 3 will remain unchanged.
- Cedar River Buoy 5 will be permanently disestablished.
- Cedar River Buoy 6 will be permanently disestablished.
- Cedar River Buoy 9 will be renamed Cedar River Buoy 5.
- Cedar River Buoy 10 will be renamed Cedar River Buoy 4.
- Cedar River Buoy 11 will be permanently disestablished.
- Cedar River Buoy 12 will be permanently disestablished.
- Cedar River Light 2 will be renamed Cedar River East Pierhead Light. The operation of the light and daymarks will remain unchanged.
- Cedar River Pierhead Light will be renamed Cedar River West Pierhead Light. The operation of the light and daymarks will remain unchanged.

Anticipated changes would take place in spring of 2025 during the seasonal establishment of the waterway.

LNM: 31/24

**LAKE OF THE WOODS - Oak Island**

The Coast Guard is changing the operation of the floating aids in vicinity of Oak Island, Little Traverse Bay in Lake of the Woods, MN.

-Oak Island Buoy 2 (LLNR 16977) will be renamed Oak Island Lighted Buoy 2, and the previously unlighted buoy will be lit with a flashing red light. The characteristics of the light will be Fl R 4s. The buoy will be relocated to position 49°18'28"N, 094°49'30"W in order to mark best water.

-Oak Island Buoy 4 (LLNR 16976) will be permanently disestablished.

Mariners are urged to use caution while transiting the area.

LNM: 38/24

**SECTION VI - PROPOSED CHANGES**

Periodically, the Coast Guard evaluates its system of aids to navigation to determine whether the conditions for which the aids to navigation were established have changed. When changes occur, the feasibility of improving, relocating, replacing, or discontinuing aids are considered. This section contains notice(s) of non-approved, proposed projects open for comment. SPECIAL NOTE: Mariners are requested to respond in writing to the District office unless otherwise noted (see banner page for address).

**PROPOSED WATERWAY PROJECTS OPEN FOR PUBLIC COMMENT**

<u>Proposed Project(s)</u>	<u>Closing</u>	<u>Docket No.</u>	<u>Ref. LNM</u>
None			

**Proposed Change Notice(s)**

**LAKE ERIE - Black Rock Canal**

The Coast Guard is considering permanently relocating Black Rock Canal Lighted Buoy 13 (LLNR 2845) to position 42°53'54.996N, 078°54'12.009"W, or 175 yards north of its current position. The relocation is to better mark the western edge of the canal following the disestablishment of Black Rock Light 15.

LNM: 44/24

**For any comments or questions on these proposed changes please contact:**

The Ninth District Aids to Navigation manager at Brian.D.Hawkins2@uscg.mil or call (206) 815-0913.

LNM: 30/13

**SECTION VII - GENERAL**

This section contains information of general concern to the Mariners. Mariners are advised to use caution while transiting these areas.

**Waterways Analysis and Management System**

The Ninth Coast Guard District will be reviewing the following waterways throughout the Great Lakes Region. The study focuses primarily on aids to navigation in the waterway. Public comments are an important tool in this process so that we can provide the adequate markings and the right mix of signals to a waterway for safe navigation. Comments on the below listed waterways can be sent to Brian.D.Hawkins2@uscg.mil or by calling (206) 815-0913. You may also complete the survey attached to the Local Notice to Mariner and either email it or mail it to: Commander (dpw), Ninth Coast Guard District, 1240 East Ninth St., Cleveland, Ohio 44199.

The following waterways will be evaluated for the duration of calendar year 2024 and will be accepting comment until 31Dec2024:

- Sackets Harbor (LLNR 1755-2024.9)
- Buffalo Harbor/Black Rock Canal (LLNR 2665-3360)
- Dunkirk Harbor (LLNR 3365-3492)
- Erie Harbor (LLNR 3495-3696)
- Conneaut Harbor (LLNR 3700-3735)
- Ashtabula Harbor (LLNR 3740-3830)
- Fairport Harbor (LLNR 3835-3955)

LNM: 11/24

**GREAT LAKES - Marine Events**

Marine events such as races, parades, regattas, and fireworks displays are frequently held in the Great Lakes region. Advance information on specific events is contained in enclosure (2) of this publication. The public is reminded to listen to the local broadcast notice to mariners for the most up-to-date information on a marine event. Mariners are advised that some events may require temporary aids to navigation that are not displayed on a chart or in the Light List, and that they should exercise additional caution while operating in the vicinity of a scheduled marine event.

LNM: 24/13

**LAKE ONTARIO – Little Sodus Bay – Chart 14800**

There is an uncharted breakwall along the shore extending from the west side of Little Sodus Bay entrance to the boat ramp of West Barrier Bar County Park. The breakwall is unmarked and unlit. Visibility of the breakwall may be impacted due to high water. All mariners are requested to transit the area with caution.

LNM: 19/23

**LAKE ONTARIO - Crescent Beach Breakwater**

A series of breakwater barriers are being constructed in Lake Ontario near Crescent Beach, to the east of Sodus Point, NY. Work will be conducted from 01 April 2024, to 30 November 2024 between the hours of 0500 to 2000. Hours are dependent on weather conditions. Construction vessels can be hailed on VHF Channel 16. Inquiries related to the project can be directed to Mr. Glenn Roet at (315) 575-6091. All mariners are advised to stay clear of workboats, barges, floating or submerged equipment in the operational work area between floating navigation buoys detailed below and the shoreline.

- 1 N43°16'21.77817" W76°57'52.20335"
- 2 N43°16'20.93870" W76°57'46.38712"
- 3 N43°16'20.17974" W76°57'41.15137"
- 4 N43°16'19.26083" W76°57'36.11887"
- 5 N43°16'17.99008" W76°57'30.33037"
- 6 N43°16'16.95743" W76°57'25.59050"
- 11 N43°16'26.91154" W76°56'44.64137"
- 12 N43°16'29.34557" W76°56'39.60362"
- 13 N43°16'31.87966" W76°56'34.99165"
- 14 N43°16'33.90231" W76°56'31.32131"

**LAKE ONTARIO - Crescent Beach Breakwater**

LNM: 14/24

**LAKE ONTARIO - Oswego Harbor**

From 13 Sep 2024 to 31 Oct 2024 Dean Marine and Excavating will be conducting breakwall repair in Oswego Harbor. Hours of operation are from 0630 to 1900 7 days a week. All mariners are requested to transit the area with caution.

LNM: 38/24

**LAKE ERIE - Black Rock Lock**

From 15 Oct 2024 to 13 Dec 2024 The U.S. Army Corps of Engineers Buffalo District will be conducting marine drilling operations inside the lock chamber. Hours of operation are from 0700 to 1900 Monday through Friday. Lockage times will vary daily. Black Rock Lock can be reached on VHF 16. All mariners are advised to coordinate their transit with the Lockmaster.

LNM: 42/24

**LAKE ERIE – OH - Ashtabula Harbor – Chart 14836**

A submerged breakwater was constructed in Ashtabula harbor. It is connected to the existing East Breakwater. The submerged breakwater is connected to the East Breakwater at the first angle point of the East Breakwater, as entering the harbor, from the lake. All elevations referenced are referred to Low Water Datum (LWD), IGLD 1985.

The center line of the submerged breakwater approximately follows the same azimuth as the first segment of the East Breakwater, in a south easterly direction, for approximately 1000', then slightly bends to the east for another two segments, for approximately 500'.

The first 1000' (Area "A") has a crest design height of -2.0' with a crest width of 9', and a footprint of approximately 150', with the next 100' transitioning to the dimensions in the next item.

The final 400' (Area "B") has a crest height of -5.0', with a crest width of 9', and a footprint of approximately 50'.

The coordinates, in decimal degrees, are as follows:

1. 41.918447801N 80.790362308W
2. 41.916367139N 80.788014301W
3. 41.916189406N 80.787730327W
4. 41.916026216N 80.787424318W
5. 41.915640784N 80.786454826W
6. 41.916242815N 80.783904852W

All mariners are requested to transit the area with caution.

LNM: 17/23

**LAKE ERIE - Cuyahoga River**

There will be a safety zone in effect on certain navigable waters of the Cuyahoga River in Cleveland, Ohio for Dive/Salvage/Heavy Equipment Training Operations within a 300-foot radius of the Diver Down flag(s) located in the following approximate position: 41-28.916 N 081-40.567 W. This safety zone encompasses the approximate area from the St. Mary's Cement Cleveland Terminal to south of the Universal Oil property located at 265 Jefferson Avenue Cleveland, Ohio. The safety zone will be in effect on October 29, 2024, from 08:30 a.m. to 1:30 p.m. (local). All mariners are advised not to enter the safety zone without the approval of the Coast Guard via VHF channel 16.

LNM: 42/24

**LAKE ERIE – Cleveland Harbor – Chart 14839**

Submerged obstructions were reported and confirmed in location 41° 29.380' N, 081° 41.906' W (NAD83) on the Cuyahoga river's left descending bank just east of the Columbus Road Bridge. The USACE completed a hydrological survey on 07 December 2023, which identified four obstructions on the river's bottom believed to be sections of steel corrugated bulkhead originating from a nearby retaining wall. The failed sections settled at the bottom of the river approximately 20 feet into the navigational channel and were measured to be between 18-21 feet from the water's surface. Marines may contact the Sector Eastern Great Lakes Command Center with any questions by phone at 716-843-9596. The most current USACE Hydrographic Survey data can be found on their website here: Buffalo District Maps and Charts (army.mil). All mariners are requested to transit the area with extreme caution.

LNM: 51/23

**LAKE ERIE- Rocky River**

Shoaling has been reported at the mouth of the Rocky River and throughout its entirety, exceeding 5 feet above low water datum inside the main channel. Of major note, the turning basin located at the mouth of the river on the west bank measures in areas at less than one foot. The latest U.S. Army Corps of Engineers hydrological survey can be found online via links above. All mariners are requested to transit the area with caution.

LNM: 08/24

**LAKE ERIE - Vermilion River**

From 12 Aug 2024 to 3 Nov 2024 Michels Construction will be performing Diving Inspection and Sheet Pile wall construction in the Vermilion River between Erie Lagoon and Vermilion Municipal docks, along the shores of Wakefield MetroPark. Operations will be 10 hours a day, 6 days a week. All mariners are requested to transit the area with caution.

LNM: 32/24

**LAKE ERIE – Maumee River**

From 08 Jan 2024 to 31 Oct 2025 Mark Haynes Construction will be conducting island restoration of the Clark and Delaware/Horseshoe islands on the Maumee River near river mile 9. Hours of operation are from 0700 to 1700 Monday to Thursday. Two temporary causeways are constructed between the shore and islands that block the side channel at the following locations.

1. Immediately downstream of the Maumee River Yacht Club.
2. Walbridge Park Boat launch.

Boaters entering the river should follow alternate routes marked by temporary buoys. For more information, please visit:

**LAKE ERIE – Maumee River**

<https://www.toledoport.org/projects/clark-and-delawarehorseshoe-islands-restoration-projects/>

LNM: 08/24

**LAKE HURON - Bay City**

From 5 Sep 2024 to 15 November 24 Ryba Marine will be conducting maintenance dredging in the Saginaw River. Hours of operation are 24 hours a day 7 days a week. Tug Kathy Lynn can be contacted on VHF channels 13 and 16. All mariners are requested to transit the area with caution.

LNM: 35/24

**LAKE MICHIGAN - Traverse City**

Michigan Technical Institute will be operating an autonomous surface vessel in the vicinity of the Great Lakes Maritime Academy. The \* meter long vessel will have a chase boat on scene maintaining direct visual supervision during operation. Questions or concerns can be directed to TRAVIS WHITE, MICHIGAN TECHNICAL INSTITUTE RESEARCH ENGINEER, 906-748-1353.

LNM: 37/24

**LAKE MICHIGAN – New Buffalo Harbor - Chart 14905**

Shoaling has been reported near the middle of the channel immediately inside the break wall in New Buffalo Harbor, MI. The actual water depth is currently significantly below the charted depth. Mariners are urged to use caution when transiting the area. For further details, contact Sector Lake Michigan at (414) 747-7182 or VHF channel 16.

LNM: 15/22

**LAKE MICHIGAN – Port Sheldon – Chart 14932**

Shoaling has been reported near Pigeon Lake at the Port Sheldon entrance. The actual water depth is currently significantly below the charted depth. Mariners are urged to use caution when transiting the area. For further details, contact Sector Lake Michigan at (414) 747-7182 or VHF channel 16.

LNM: 15/23

**LAKE MICHIGAN - Manistee**

Shoaling has been reported in Lake Manistee in position 44-15.41N, 086-18.76W. All mariners are requested to transit the area with caution. For further details, contact Sector Lake Michigan at (414) 747-7182 or VHF channel 16.

LNM: 15/24

**LAKE MICHIGAN – Muskegon Channel – Chart 14906**

The Coast Guard has received reports that the depths at the entrance to Muskegon Lake are less than the charted depths. All mariners are requested to transit the area with caution.

LNM: 17/23

**LAKE MICHIGAN - Holland Inner**

From 01 Oct 2024 to 30 Nov 2024 the King Company will be dredging the Holland Inner Harbor. Hours of operation are 24 hours a day 7 days a week. Submerged dredge pipe will lie on the lake floor, marked by orange round buoys every 500 feet. (2) white buoys will be seen North and South of the dredge. The white buoys indicate winch anchor locations. The disposal is in the city's CDF upriver from the federal channel. The primary contact will be the Superintendent Joseph Martin. His cell number is listed below. During rough seas, our pipe pontoon will be floating outside of the channel. It is bright yellow, 25'x8'x6' and has (2) flashing lights on each end that come on at night. From N. River Ave. Bridge to the west, a floating pipe will be utilized to make it upriver to the placement area. This pipe will also be marked every 500' with orange buoys.

LNM: 38/24

**LAKE MICHIGAN - Gary Indiana**

From 5 June 2024 to 30 Oct 2024 Geodynamics, an NV5 Company will be conducting hydrographic survey in support of nautical chart updates. The survey area has nearshore work off Gary, In, Michigan City, In, ~4-8 nmi work off Highland Park, IL, and further offshore work ~9-20 nmi offshore of Chicago, IL. Surveys will be conducted 24 hours a day, 7 days a week, on the RV Substantial and 12 hours a day, 7 days a week on the RV Benthos. The RV Benthos is a 30 ft Armstrong aluminum catamaran survey vessel operating multibeam sonar. Provide ½ nautical mile distance when possible. Mariners are urged to transit at their slowest safe speed in the vicinity of the survey vessels to minimize wake. All survey vessels have AIS and will monitor VHF channels 16/13.

LNM: 22/24

**LAKE MICHIGAN - Calumet River**

From 07 Oct 2024 to 30 Dec 2024 Roen Salvage will be installing scour stone placement near the Thomas J O'Brien Lock from 0600 to 1800 7 days a week. The crane-barge Derrick 3 will also monitor channel 7. Work will be occurring in front of the TJ O'Brien lock. Commercial traffic will need to provide 30-60 minutes notice for passage. Recreational traffic shall stay clear and navigate around operations at a safe distance. When construction activities are paused, construction equipment will be moored east of the TJ O'Brien Lock outside of the channel.

LNM: 40/24

**LAKE MICHIGAN - Indiana Harbor Canal**

There is an obstruction on the south side of the Federal channel at the Indiana Harbor Canal in East Chicago, Indiana at the location of the former Canal St. bridge.

LNM: 16/24

**LAKE MICHIGAN - Indiana Harbor Canal**

From 3 Sep 2024 to 15 Dec 2024 Roen Salvage will be conducting dredging. Hours of operation are 24 hours a day 7 days a week. Tug David R.

**LAKE MICHIGAN - Indiana Harbor Canal**

Schanock can be contacted on Vhf channels 7 and 16. All mariners are requested to transit the area with caution.

LNM: 35/24

**LAKE MICHIGAN - Burns Small Boat Channel**

From 01 Nov 2024 to 15 Dec 2024 Dredging Burns Small Boat Harbor Channel. Our submerged dredge pipe will lie on the lake floor, marked by orange round buoys every 500 feet. (2) white buoys will be seen North and South of the dredge. The white buoys indicate winch anchor locations. The disposal is to the south of the channel mouth and at minimum 300' from the beach. (2) bright bright yellow pontoon will mark the placement area and dredging area. They are 25'x8'x6' and have (2) flashing lights on each end that come on at night. The primary contact will be the Superintendent Robert Lister. His cell number is listed below. During rough seas, our yellow pontoons will be floating just outside of the channel.

LNM: 42/24

**LAKE MICHIGAN – Sheboygan River – Chart 14922**

Shoaling has been reported in entrance of the Sheboygan River in the vicinity of 43-44.928N, 087-42.170W AND 43-44.936N, 087-42.110W. The actual water depth is currently significantly below the charted depth. Mariners are urged to use caution when transiting the area. For further details, contact Sector Lake Michigan at (414) 747-7182 or VHF channel 16.

LNM: 24/22

**Lake Michigan - Milwaukee River**

From 5 Aug 2024 to 5 Nov 2024 Coleman Engineering will be conducting sediment sampling and borings in the Milwaukee River from North Ave Dam south confluence, Menominee River east to confluence, KK River from W. Becher St east and North to confluence, and Inner/Outer Harbor. Hours of operation are from 0700 to 1800 Monday thru Friday. All mariners are requested to transit the area with caution.

LNM: 31/24

**LAKE MICHIGAN - Milwaukee**

From 01 Aug 2024 to 31 Dec 2024 Great Lakes Dock and Material will be conducting South Shore breakwater repair. Hours of operation are 24 hours a day 7 days a week. Barge Justin Avery, Tug George F. Bailey and Tug Fischer Hayden can be contacted on VHF channels 16 and 18. Mariners should use extreme caution when transiting the area and maintain 25ft from equipment and work area. (4) danger buoys will outline the work area on the landside of the existing breakwater. Do Not Enter Work Area. Please have positive contact with equipment, marine equipment will be located near the south shore breakwater – North Section in Lake Michigan. The work areas are directly east of South Shore Yacht Club. Equipment includes crane barge, excavators, material barges and tug boats.

LNM: 35/24

**LAKE MICHIGAN - Green Bay**

From 3 Sep 2024 to 31 Oct 2024 the King Company will be conducting hydraulic dredging in Green Bay Channel. Hours of operation are 24 hours a day 7 days a week. Dredge BuxtonII can be contacted on VHF channels 16, 18, and 73. Submerged dredge pipe will lie on the lake floor, marked by orange round buoys every 500 feet. (2) white buoys will be seen North and South of the dredge. The white buoys indicate winch anchor locations. The disposal is in the East Cell of Cat Island. The primary contact will be the Superintendent Joseph Martin. His cell number is listed below. During rough seas, our pipe pontoon will be floating outside of the channel. It is bright yellow, 25'x8'x6' and has (2) flashing lights on each end that come on at night.

LNM: 35/24

**LAKE MICHIGAN - Menominee River**

From 22 Oct 2024 to 30 Nov 2024 Roen Salvage will be conducting soil drilling and sampling. Soil drilling and sampling will be occurring from a barge throughout the Menominee River, from the outer harbor entrance to the upstream limits of the federal channel. Stay clear of equipment and do not throw wakes

LNM: 42/24

**LAKE SUPERIOR – Little Lake Harbor – Chart 14961**

Shoaling has been reported in the entrance of Little Lake Harbor exceeding 5 feet above low water datum near the channel edges. Some cross sections of the channel are shoaled nearly the full width to 2 feet or more above low datum. The harbor should not be considered as a functional harbor or refuge. All mariners are requested to transit the area with caution.

LNM: 47/22

**Lake Superior - Marquette MI**

Shoaling has been reported at the south pier of the LS&I Iron Ore facility in Marquette MI. The actual water depth is currently significantly below the charted water depth. All mariners are requested to use caution when transiting the area.

LNM: 31/24

**LAKE SUPERIOR - Grand Traverse Harbor Channel**

There is significant shoaling in the Grand Traverse Harbor Channel between Grand Traverse Harbor LT 2(LLNR 151300) and Grand Traverse Harbor LT 3(LLNR15135). Depths around 2.5' spanning the width of the channel. All mariners are requested to transit the area with caution.

LNM: 37/24

---

---

**SECTION VIII - LIGHT LIST CORRECTIONS**

An Asterisk \*, indicates the column in which a correction has been made to new information

---

(1) No.	(2) Name and Location	(3) Position	(4) Characteristic	(5) Height	(6) Range	(7) Structure	(8) Remarks
------------	--------------------------	-----------------	-----------------------	---------------	--------------	------------------	----------------

---

## SECTION VIII - LIGHT LIST CORRECTIONS (Continued)

(1) No.	(2) Name and Location	(3) Position	(4) Characteristic	(5) Height	(6) Range	(7) Structure	(8) Remarks
16645	GRAND PORTAGE PIER LIGHT	47-57-41.616N 089-41-01.860W	Fl W 2.5s	12 4		On pile.	Maintained from Apr. 1 to 44/24 Nov. 1. Private Aid.

\*

---



---

**ENCLOSURES**


---

**(1) LNM Section I - Special Notices**

1-Great Lakes Water Levels

LNM: 06/22

**(2) LNM Section II - Discrepancies**

N/A

LNM: 19/19

**(3) LNM Section III - Temporary Changes and Temporary Changes Corrected**

N/A

LNM: 19/19

**(4) LNM Section IV - Chart Corrections**

N/A

LNM: 19/19

**(5) LNM Section V - Advance Notices**

N/A

LNM: 19/19

**(6) LNM Section VI - Proposed Changes**

N/A

LNM: 19/19

**(7) LNM Section VII - General**

1-Marine Events

2-Current Ninth District Bridge Maintenance/Activities

3-Waterway Analysis and Management System Survey

LNM: 19/19

**(8) LNM Section VIII - Light List Corrections**

N/A

LNM: 19/19

---



---

J. P. Hickey, RADM  
U. S. Coast Guard  
Commander, Ninth Coast Guard District



# GREAT LAKES, CONNECTING CHANNELS AND ST. LAWRENCE RIVER WATER LEVELS AND DEPTHS

Expected water levels on the Great Lakes, Connecting Channels and the St. Lawrence River are given in inches above (+,0) or below (-,0) Low-Water Datum (LWD,0). LWD is a plane of reference on a navigation chart, also known as Chart Datum. LWD elevations shown below are given in International Great Lakes Datum, 1985 (IGLD 1985,0).

	Forecast Point	Low Water Datum IGLD 1985	Expected Levels (inches above or below Low Water Datum,0)				
			Current	Week 1	Week 2	Week 3	Week 4
			11-Oct	18-Oct	25-Oct	1-Nov	8-Nov
<b>GREAT LAKES</b>							
Lake Ontario		243.3	19	17	15	13	10
Lake Erie		569.2	33	31	31	29	28
Lake St. Clair		572.3	31	30	28	27	25
Lake Michigan-Huron		577.5	16	16	15	14	13
Lake Superior		601.1	6	5	5	5	4
<b>ST. LAWRENCE RIVER</b>							
Above Long Sault Dam	0	237.9	26	26	22	21	18
Above Iroquois Dam	1	240.3	16	15	12	11	7
Ogdensburg	2	242.4	18	17	13	11	8
Alexandria Bay	2.1	243.0	18	17	14	12	10
Head of river at Cape Vincent	3	243.3	19	17	15	13	10
<b>DETROIT RIVER</b>							
Lake Erie at Pelee Passage	4	569.2	33	31	31	29	28
Mouth of River at Gibraltar	5	569.5	33	32	31	30	28
Fort Wayne	5.1	571.1	35	33	32	31	29
Head of River above Belle Isle	6	572.0	32	31	29	28	26
<b>ST. CLAIR RIVER</b>							
Mouth of River at St. Clair Flats	7	572.3	31	30	28	27	25
Algonac	8	572.8	33	32	30	29	28
St. Clair	9	574.4	26	25	24	23	22
Blue Water Bridge	10	576.2	23	23	22	21	19
Head of River at Fort Gratiot	11	577.2	19	18	17	16	15
Lake Huron Approach Channel	12	577.5	16	16	15	14	13
<b>ST. MARYS RIVER</b>							
Mouth of River at Detour	13	577.5	16	16	15	14	13
West and Middle Neebish	14	577.8	14	13	13	12	11
Head of Little Rapids	15	578.4	13	12	11	10	9
U.S. Slip	16	578.7	12	11	10	9	8
Above Locks	17	600.4	8	8	7	7	6
Head of River at Point Iroquois	18	601.1	6	5	5	5	4

## UNDERSTANDING THE FORECAST

Available water depth is determined for a location by adding (if+) or subtracting (if-) the amount from the above table to the appropriate channel depth shown in the profile Connecting Channel Depths Graphic or to water depths shown on National Oceanic and Atmospheric Administration (NOAA) navigational charts.

## CAUTION

Depths so determined are representative of a still water surface elevation, disturbed by neither wind nor other causes. Depths, however, may be reduced or increased as much as several feet for short periods due to these disturbances, or when sections of channels develop shoals. Vessel masters should refer to "Local Notice to Mariners" for extent of shoaling and scattered bedrock projections in all channels. Ice conditions can have a dramatic impact on actual channel depth and can lead to large short-term water level fluctuations. Ice information can be found at the National Ice Center's website.

### FOR FURTHER INFORMATION CONTACT:

Detroit District Corps of Engineers  
477 Michigan Avenue  
Detroit MI, 48226  
1-888-694-8318 ex. 1  
email: [hphm@usace.army.mil](mailto:hphm@usace.army.mil)

### FOR MORE INFORMATION VISIT:

[Detroit District Great Lakes Homepage](#)  
[International Joint Commission](#)  
[Great Lakes Information Network](#)  
[NOAA Tides and Currents](#)  
[U.S. Coast Guard - District 9](#)

### WATER LEVEL INFORMATION SUPPLIED BY:

NOAA, National Ocean Service  
SSMC4, STATION 7523  
1305 East-West Hwy  
Silver Spring, MD 20910-3233  
(301) 713-2902



**DNR**  
**MICHIGAN DEPARTMENT OF NATURAL RESOURCES**

**INTEROFFICE COMMUNICATION**

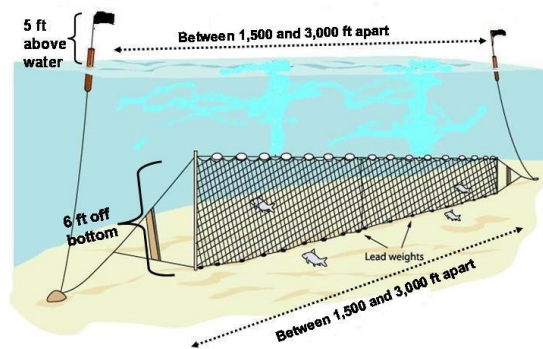
10 October 2024

**TO:** Natural resource agency personnel and mariners operating on Lake Superior

**FROM:** Shawn P. Sitar, Fisheries Research Biologist, Marquette Fisheries Research Station, Fisheries Division

**SUBJECT:** R/V *Lake Char* operations in Lake Superior 28 October- 08 November 2024

This is a note to inform you that we will be conducting a fall lake trout gill net survey aboard the Research Vessel *Lake Char* in Lake Superior starting 28 October and should finish by 08 November. We will be setting bottom set gill nets that are 1,200 ft long, extend about 6 feet from the bottom and are set overnight. Our fall sampling stations are generally less than 120 deep and within a few miles from shore. Our nets are marked with black and orange flagged staff buoys that are labeled with our agency identification.



We will be conducting our survey in the following areas of Lake Superior: Au Train Bay, Au Train Pt., Wood Island, Williams Island, Grand Island area, West Channel, and Pictured Rocks area.

Attached is the cruise schedule, map, and sampling station coordinates for the lake trout survey. Note that weather conditions may delay the sampling dates. Please provide copies of this cruise

schedule to all pertinent personnel. Please note that we can be reached via MIDNR 800 MHz Radios on our primary radio channel on Zone B, FIMARQT, or via marine radio channel 16. Our radio call sign is *R/V Lake Char*. We can also be reached on the vessel via cell phone number 906-458-6925.

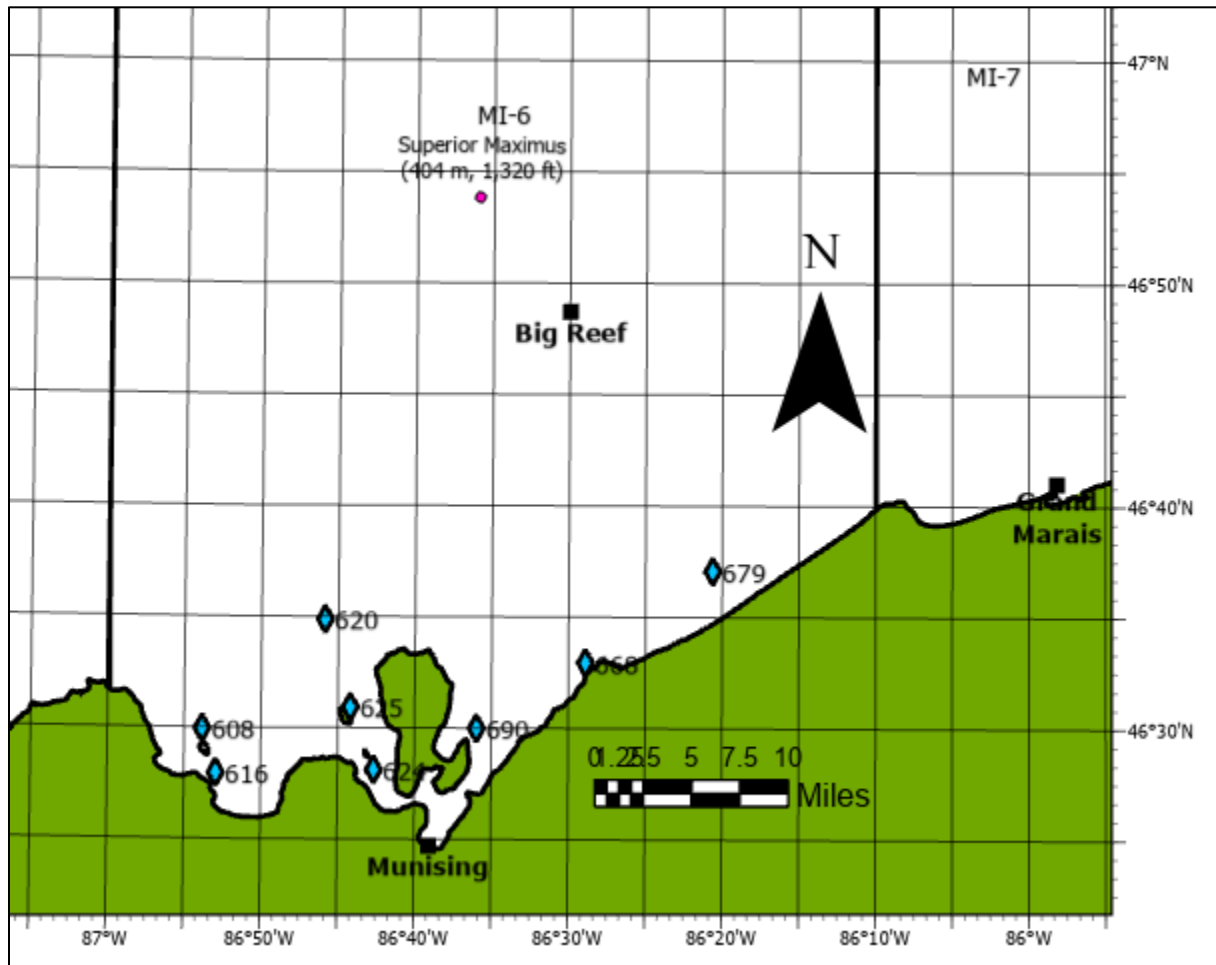
If you have any questions regarding our sampling schedule, please feel free to contact me by e-mail at [sitars@michigan.gov](mailto:sitars@michigan.gov) or by cell phone at (906)-235-1581. Thank you for your cooperation.

Attachment

**2024 fall lake trout survey schedule for Marquette Fisheries Research Station (MFRS), Fisheries Division, Michigan Department of Natural Resources.**

<b>MIDNR-R/V Lake Char 2024 Fall lake trout survey station positions.</b>					
<b>Dates</b>	<b>Column2</b>	<b>Station_no</b>	<b>site</b>	<b>latitude</b>	<b>longitude</b>
10/28 -	11/08/2024	616	Brownstone Reef	46 deg 28 min	86 deg 7 min
10/28 -	11/08/2024	608	Au Train Island Reef	46 deg 30 min	86 deg 6 min
10/28 -	11/08/2024	624	Williams Island Reef	46 deg 28 min	86 deg 17 min
10/28 -	11/08/2024	620	Wood Island Shoal	46 deg 34 min	86 deg 14 min
10/28 -	11/08/2024	625	Wood Island Reef	46 deg 31 min	86 deg 15 min
10/29 -	11/08/2024	690	Trout Point Reef	46 deg 30 min	86 deg 24 min
10/29 -	11/08/2024	668	Grand Portal Point	46 deg 32 min	86 deg 31 min
10/29 -	11/08/2024	679	Beaver Hump	46 deg 37 min	86 deg 39 min

Research Vessel Lake Char, MIDNR fall lake trout survey stations.





# Marine Safety Information Bulletin

Commander  
Ninth Coast Guard District  
Prevention Division  
1240 E. 9<sup>th</sup> Street  
Cleveland, OH 44199

MSIB Number: 003-24  
Date: August 23, 2024  
Contact: LCDR Jason Radcliffe  
Phone: (206) 820-3336  
Email: jason.a.radcliffe2@uscg.mil

---

## Autonomous Unmanned Watercraft on the Great Lakes

The Ninth Coast Guard District is issuing this Marine Safety Information Bulletin to bring awareness to autonomous unmanned vessels operating on the Great Lakes.

The Great Lakes provides an ideal environment for unmanned autonomous vessels to conduct a myriad of scientific and research missions. Federal and State agencies, educational institutions, and technology developers are utilizing autonomous unmanned vessels to, for example, identify toxic algae blooms near drinking water intakes, monitor fish populations, and chart navigable channel depths.

While these vessels may provide useful service contributions, their increasing presence and diversity of form, shape, and function brings an added layer of complexity for other vessels navigating on the Great Lakes. Below are some suggested precautions that all mariners, vessel owners and operators should consider while planning an outing or transit.

**Stay Informed:** Research vessel deployment and operations are communicated to the U.S. Coast Guard and are advertised to the public via:



***Broadcast Notice to Mariners*** (BNM) on VHF Channel 16.

***BNM*** textual format:

<https://www.navcen.uscg.gov/broadcast-notice-to-mariners>

Ninth District ***Local Notice to Mariners*** (LNM):

<https://www.navcen.uscg.gov/local-notice-to-mariners-main>

***Subscribe*** to receive BNM's and/or LNM's weekly to your email:

<https://www.navcen.uscg.gov/subscribe-email-rss-feeds>

**Maintain Navigational Awareness:** These vessels operate on the surface, underwater, or both and each vessel differs drastically in autonomy, anti-collision capability, and maneuverability. The safest approach is to regard these as hazards to navigation and once sighted- make all possible attempts to keep clear.

To aid mariners in sighting and avoidance, the common identifiers of autonomous unmanned watercraft(s) include the following vessel characteristics:

- A flashing white or yellow light
- Retro-reflective markings
- Markings that identify craft as UNMANNED
- Yellow or Orange paint scheme
- Radar reflector and/or Automatic Identification System (AIS)

If you have any questions concerning this matter, please contact Lieutenant Commander Jason Radcliffe at (206) 820-3336.

## CURRENT NINTH DISTRICT BRIDGE MAINTENANCE/ACTIVITIES

### Local Notice to Mariner Week [44/24]

*Items marked + have been entered in USAIMS*

**Note:** Short-term bridge maintenance closures and various activities may only be published [through Broadcast Notice to Mariners\\*](#) and may not be included [in the Local Notice to Mariners\\*](#). Mariners should both *listen* to Broadcast Notice to Mariners (BNM) and *read* Coast Guard Local Notice to Mariners (LNM) available by clicking [HERE](#) for the most recent and complete marine information.

\* [Broadcast Notice to Mariners issued on VHF-FM Marine Channels 16 & 22 \[Subscribe Here\]](#)

\* [Local Notice to Mariners \[Subscribe Here\]](#)

To [Subscribe to Bridge Maintenance & Activities Summary email click here.](#)

There is a Microsoft Teams meeting with the US Coast Guard, Mariners, and Bridge Owners being held on the last Wednesday of every month at 1300 ET, and **YOU** are welcome to join in. **Join on your computer or mobile app.** [Click here to join the meeting](#) **Or call in (audio only) +1 410-874-6742,,515305017#** Phone Conference ID: 515 305 017#

#### \*\*\*\*\*NOTE\*\*\*\*\*

Updating of the winter hours phone list has begun, we hope to publish it end-October.

PUBLIC NOTICES FOR 9th District BRIDGES: <https://www.navcen.uscg.gov/D9BN>

#### **Please contact us with any questions or concerns:**

Blair Stanifer (216) 902-6086 or [William.B.Stanifer@uscg.mil](mailto:William.B.Stanifer@uscg.mil)  
Lee Soule (216) 902-6085 or [Lee.D.Soule@uscg.mil](mailto:Lee.D.Soule@uscg.mil)  
Michael Walker (216) 902-6087 or [Michael.O.Walker2@uscg.mil](mailto:Michael.O.Walker2@uscg.mil)  
FAX: (216) 902-6088

Commander (dpb)  
Ninth Coast Guard District  
1240 E. 9th St. Room 2047B  
Cleveland, Ohio 44199-2001

#### **FEDERAL REGULATIONS DOCKET STATUS**

[Regulations.gov](#) enter the USCG - docket number in the search window to review all comments and documents associated with the project.

USCG-2023-0185 - FR – Sandusky Bay – Under Legal review  
USCG-2024-0407 - TD - Manitowoc, WI – Under Legal Review

#### **GREAT LAKES REGION**

#### **GREAT LAKES, Drawbridge Delay Reports, Chart 14500**

Mariners are requested to submit Reports of Drawbridge Signal/Operations Delays directly to the Ninth Coast

Guard District Bridge Branch using the attached form. Reports of signal or drawbridge delays have been processed by Coast Guard Marine Safety Offices in recent years but will now be processed and traced by the Bridge Branch. Reports may be sent by mail, e-mail, or by fax. The mailing address and fax number are on the form.

[08/05] [34/12]

### **GREAT LAKES, Drawbridge Civil Monetary Penalty Adjustments for Inflation, Chart 14500**

DHS adjusts for inflation its civil monetary penalties for 2024, in accordance with the Federal Civil Penalties Inflation Adjustment Act Improvements Act of 2015 and Executive Office of the President (EOP) Office of Management and Budget (OMB) guidance. DHS is also accounting for additional civil monetary penalties that the U.S. Coast Guard is statutorily authorized to collect. The new penalty amounts will be effective for penalties assessed after June 28, 2024 whose associated violations occurred after November 2, 2015.

The Coast Guard is authorized to assess nearly 150 penalties involving maritime safety and security and environmental stewardship that are critical to the continued success of Coast Guard missions. Various statutes in titles 14, 16, 19, 33, 42, 46, and 49 of the U.S.C. authorize these penalties. Titles 33 and 46 authorize the vast majority of these penalties as these statutes deal with navigation, navigable waters, and shipping. For a more detailed discussion of the civil monetary penalties assessed by the Coast Guard, see the 2016 IFR preamble at [81 FR 42992](#). To view the full document, visit 89 FR 53849. **Bridges: New penalty is \$35,516.00 (for each violation, per day, and/or per vessel).**

## **ST. LAWRENCE SEAWAY**

### **NY STATE CANAL SYSTEM**

(Everything West of St. Johnsville, NY)

#### **NY - NEW YORK STATE CANAL SYSTEM - Erie Canal – Chart 14786**

From March 15, 2024, through **January 31, 2025**, daily, contractors will utilize scaffolding and man lifts above low steel of the E144C I-390 Bridge at mile 258.65 and the E144D I-390 Bridge at mile 258.68 over the Erie Canal.

[42/23] +

#### **NY - NEW YORK STATE CANAL SYSTEM - Erie Canal – Chart 14786**

From June 10, through **November 8, 2024**, between the hours of 0600 and 2100, daily, a 30-foot Harcon will be inspecting all bridges from E101 Leach Road Bridge at Mile 221.01 to E211 County Road 5 Bridge at Mile 304.13 over the Erie Canal. The Harcon will monitor VHF-FM marine Channel 16 and will move to accommodate vessels if a 30-minute advance notice is provided.

[17/24] +

#### **NY - NEW YORK STATE CANAL SYSTEM - Erie Canal – Chart 14786**

From July 8, 2024, through **November 30, 2024**, scaffolding will be installed under the E-234 Transit Road Bridge at Mile 320.97 over the Erie Canal that hangs approximately 3-feet below low steel.

[24/24] +

#### **NY - NEW YORK STATE CANAL SYSTEM - Erie Canal – Chart 14786**

From March 1, 2025, through **June 30, 2025**, scaffolding will be installed under the E-234 Transit Road Bridge at Mile 320.97 over the Erie Canal that hangs approximately 3-feet below low steel.

[24/24] +

## LAKE ONTARIO

### LAKE ERIE - MAHONING RIVER - NIAGARA RIVER- ALLEGHENY RIVER

#### **NY - LAKE ERIE – Buffalo Harbor – Chart 14833**

From January 1 through **March 31, 2025**, the Canadian National International Railroad Bridge at mile 3.8 over the Black Rock Canal will be secured to masted navigation for maintenance. Vessels able to pass under the bridge without an opening may do so at any time.

[30/23] +

#### **NY - LAKE ERIE – Niagara River – Chart 14833**

From August 28, 2023, through **July 26, 2026**, scaffolding that extends approximately 3-feet below low steel will be installed under the South Grand Island Bridge at Mile 3.40 and the North Grand Island Bridge at Mile 18, both over the Niagara River. A 16-foot by 32-foot materials barge and a 4-foot by 40-foot temporary dock will be used under the bridges.

[32/23] +

#### **OH - LAKE ERIE – Toledo Harbor – Chart 14847**

From July 17, 2024, through **March 31, 2025**, a 60-foot by 60-foot barge will be working at the Martin Luther King Jr. Memorial Bridge at Mile 4.30 over the Maumee River. The barge will move to accommodate larger vessels if provided a 3-hour advance notice directly to the barge on VHF-FM Marine Channel 16. Additionally, from December 1, 2024, through March 31, 2025, scaffolding/containment will be installed that hangs approximately 3-feet below low steel of the bridge bascule spans; however, the scaffolding will allow the bridge to operate normally.

[29/24] +

\*\*\*\*\*REVISED\*\*\*\*\*

#### **OH - LAKE ERIE – Toledo Harbor – Chart 14847**

From August 14 through **November 30, 2024**, between the hours of 0700 and 1600, Monday through Friday a 30-foot by 90-foot barge will be working at the Martin Luther King Jr. Memorial Bridge at Mile 4.30 over the Maumee River. The barge will monitor VHF-FM Marine Channel 16 and passing arrangements can be made directly with the Great Lakes Concrete Restoration Barge.

[33/24] [34/24] +

#### **OH - LAKE ERIE – Cleveland Harbor – Chart 14839**

From January 20 through **March 15, 2025**, the Eagle Avenue Bridge at Mile 2.80 over the Cuyahoga River will be secured to masted navigation and a 180-foot by 52-foot barge will be positioned under the drawspan to facilitate the removal of the bridge. Vessels able to pass under the bridge without an opening and around the barge may do so at any time.

[36/24] +

### DETROIT RIVER - LAKE ST. CLAIR - ST. CLAIR RIVER – RIVER ROUGE

\*\*\*\*\*REVISED\*\*\*\*\*

#### **MI - DETROIT RIVER – Main Channel – Chart 14848**

From November 1, 2022, through **December 1, 2024**, contractors will be constructing the Gordie Howe International Bridge at mile 16.7 over the Detroit River. No equipment will be placed in the water. Overhead work will have temporary steady burning yellow lights to mark new construction. A moving platform with quick flashing red lights and orange or red ball fenders on the bottom four corners with a safety net that hangs approximately 15-feet below low steel will be constructing the bridge. Mariners should avoid passing directly under the platform at any time. Snooper type vehicles will be utilized on the bridge throughout construction. Spotters will warn of approaching vessels and move the man lift to allow vessels to pass. When construction is



completed and all equipment removed, the final vertical clearances for the bridge will be 152-feet for the center 100-feet of the navigation channel. No less than 137-feet of vertical clearance will be available at the channel limits. Vertical clearances are based on IGLD85.

[47/20] [07/22] [02/24] [30/24] +

**NOTE:** Over the water construction is basically complete and extensions to construction have been issued to accommodate demobilization of equipment.

#### **MI – SAINT CLAIR RIVER – Chart 14852**

From June 14, 2024, through **December 20, 2025**, scaffolding that hangs approximately 4-feet below low steel will be installed under the Blue Water Bridge at Mile 39.1 over the St. Clair River. Steady burning yellow lights will warn mariners of the temporary reduction in clearances.

[22/24] +

#### **MI - DETROIT RIVER – River Rouge – Chart 14854**

From December 2 through **December 10, 2024**, between the hours of 0700 and 1700, Monday through Saturday, the Fort Street Bridge at Mile 2.20 over the River Rouge will require a 2-hour advance notice for openings. Mariners should provide advance notice directly to the drawtender.

[43/24] +

### [LAKE HURON](#)

\*\*\*\*\*REVISED\*\*\*\*\*

#### **MI - LAKE HURON – Saginaw River – Chart 14867**

From April 19, through **November 30, 2024**, the Independence Street Bridge at Mile 3.88, over the Saginaw River will have two barges 80-foot by 40-foot or smaller working under the bridge. If needed the barges will move with a 2-hour advance notice. Mariners should provide advance notice for the barges by calling 608-425-0171.

[17/23] [47/23] [17/24] +

#### **MI - LAKE HURON – Saginaw River – Chart 14867**

From December 1, 2024, through **March 31, 2025**, the Independence Bridge, mile 3.88, over the Saginaw River will be secured to masted navigation. Vessels able to pass under the bridge without an opening may do so at any time. Two 80x40-foot barges will be working under the bridge, and they will move if a 2-hour advance notice is provided by calling 608-425-0171. During the winter the ice will be degraded due to the movement of barges and the ice under the bridge should be considered unsafe for pedestrians or vehicles.

[21/24] +

\*\*\*\*\*REVISED\*\*\*\*\*

#### **MI - LAKE HURON – Saginaw River – Chart 14867**

From December 1, 2024, through **March 31, 2025**, the Lafayette Street Bridge at Mile 6.78, over the Saginaw River will be secured to masted navigation. Vessels able to pass under the bridge without an opening may do so at any time. Additionally, starting on October 1, 2024, six barges 80x100-foot or smaller, will be working under the bridge, and they will move if a 2-hour advance notice is provided by calling 608-425-0171. From December 15, 2024, through **November 30, 2025**, a cofferdam will be installed that measures approximately 60-feet by 95-feet, that reduces the navigation channel by 2-feet on either side leaving approximately 146-foot channel available for vessels. The red pier lights will be moved to the cofferdam sides to show the temporary reduction in horizontal clearance. From November 4, 2024, through November 15, 2028, trestles will be installed extending outward from shore approximately 50-feet. Flashing yellow lights will warn mariners of the trestle's location. From During the winter, the ice will be degraded due to the movement of barges and the ice under the

bridge should be considered unsafe for pedestrians or vehicles.

[30/24] [44/24] +

## SAINT MARY'S RIVER

## LAKE MICHIGAN - EAST

### **MI - LAKE MICHIGAN – St Joseph River – Chart 14930**

From December 16, 2024, Through **April 7, 2025**, and again from December 16, 2025, Through April 7, 2026, the Twin Cities Bicentennial Bridge at Mile 1.30, over the St. Joseph River, will be secured to masted navigation for maintenance. Vessels able to pass under the bridge without an opening may do so at any time.

[32/24] +

### **MI - LAKE MICHIGAN – St Joseph River – Chart 14930**

On **November 5, 2024**, between the hours of 0900 and 1500 the CSX Railroad Bridge at Mile 0.67 over the St. Joseph River will be secured to masted navigation for maintenance. Vessels able to pass under the bridge without an opening may do so at any time.

[43/24] +

## LAKE MICHIGAN – MICHIGAN CITY & INDIANA HARBOR & GARY HARBOR

\*\*\*\*\*REVISED\*\*\*\*\*

### **IN - LAKE MICHIGAN – Indiana Harbor Canal – Chart 14927**

From 2359 Friday to 2359 on Sunday on the following weekends in **2025**, the Elgin, Joliet, and Eastern Railroad Bridge at Mile 0.68 over Indiana Harbor Canal will be secured to masted navigation for maintenance. Vessels able to pass under the bridge without an opening may do so at any time. March 15-16, March 22-23, March 29-30, April 5-6, and **April 19-20**.

[39/24] +

## LAKE MICHIGAN – CALUMET RIVER & LITTLE CALUMET RIVER

### **IL - LAKE MICHIGAN – Calumet Harbor – Chart 14927**

The Coast Guard has received a report that the lights on the Norfolk Southern Railroad Bridge at Mile 12.49 over the Little Calumet River are extinguished.

[27/24] +

### **IL - LAKE MICHIGAN – Calumet Harbor – Chart 14927**

The Coast Guard has received a report that the center lights on the Norfolk Southern Railroad Bridge at Mile 5.59 over the Calumet River are extinguished.

[27/24] +

### **IL - LAKE MICHIGAN – Calumet Harbor – Chart 14927**

**From 2359 on January 31, 2026, through 2359 on February 7, 2026**, and again from 2359 on February 21, 2026, to 2359 on February 28, 2026, the 92<sup>nd</sup> Street Bridge at mile 0.76 (CORPS MILE 332.4) and the 100<sup>th</sup> Street Bridge at mile 1.78 (CORPS MILE 331.4) over the Calumet River will be secured to masted navigation. Vessels able to pass under the bridge without an opening may do so at any time.

**From 2359 on January 31, 2027, to 2359 on February 6, 2027**, and again from 2359 on February 21, 2027, to 2359 on February 27, 2027, the 95<sup>th</sup> Street Bridge at mile 1.09 (CORPS MILE 332.1) and the 106<sup>th</sup> Street Bridge at mile 1.78 (CORPS MILE 330.6) over the Calumet River will be secured to masted navigation. Vessels able to pass under the bridge without an opening may do so at any time.

The use of barges under the bridge(s) is authorized but the barge(s) must monitor VHF-FM Marine Channel 16 and move to accommodate vessels with a 3-hour advance notices. Mariners should provide advance notice directly to the barge. Barge characteristics will be provided closer to the event.

[43/24] +

#### **IL - LAKE MICHIGAN – Calumet Harbor – Chart 14927**

On **October 29, 2024**, between the hours of 0800 and 1700, divers will be inspecting the 106<sup>th</sup> Street Bridge at mile 2.58 (CORPS MILE 330.6) over the calumet River. A 20-foot dive boat will monitor VHF-FM Marine Channel 16 and spotters will move the divers to allow vessels to pass.

[43/24] +

#### **CHICAGO RIVER – MAIN RIVER CHANNEL, NORTH BRANCH, NORTH SHORE CHANNEL, AND SOUTH BRANCH AND SOUTH FORK OF SOUTH BRANCH**

#### **IL - LAKE MICHIGAN – Chicago Harbor – Chart 14927**

From 0600 on January 20 through 0600 on **January 27, 2025**, the Amtrak Bridge at Mile 3.77 (CORPS MILE 323.5) over the South Branch of the Chicago River will be secured to masted navigation. Vessels able to pass under the bridge without an opening may do so at any time.

[39/24] +

#### **IL - LAKE MICHIGAN – Chicago Harbor – Chart 14927**

From October 14 through **December 6, 2024**, between the hours of 0700 and 1600, Monday through Friday, a 50-foot by 25-foot barge will be working under the Grand Avenue Bridge at Mile 2.00 (CORPS MILE 325.9) over the North Branch of the Chicago River. The barge will monitor VHF-FM Marine Channel 16 and will move with a 1-hour advance notice.

[40/24] +

#### **CALUMET SAG CHANNEL**

\*\*\*\*\*REVISED\*\*\*\*\*

#### **IL - LAKE MICHIGAN – Calumet-SAG Channel – Chart 14927**

From February 20, 2024, through **November 1, 2025**, scaffolding that hangs approximately 6-feet below low steel will be installed under one half of the 127<sup>th</sup> Street Bridge at Mile 18.81 (CORPS MILE 314.2) over the Calumet-SAG Channel. A 40-foot by 50-foot barge will be used at the bridge and will move if provided a 30-minute advance notice of arrival on VHF-FM marine Channel 16.

[03/24] [04/24] [10/24] +

#### **CHICAGO SANITARY AND SHIP CANAL, KANKAKEE RIVER & ROCK RIVER**

(Lake Michigan to Mile 36.2/291.1)

\*\*\*\*\*REVISED\*\*\*\*\*

#### **IL - LAKE MICHIGAN – Chicago Sanitary and Ship Canal – Chart 14927**

From September 13, through **August 31, 2025**, scaffolding will be installed that hangs approximately 3-feet below low steel of the South-Central Avenue Bridge at mile 11.1 (CORPS MILE 316.2) over the Chicago Sanitary and Ship Canal.

[03/24] [23/24] [38/24] +

**IL - LAKE MICHIGAN – Chicago Sanitary and Ship Canal – Chart 14927**

From November 18 **through November 22, 2024**, between the hours of 0700 and 1800 each day inspectors will utilize snooper trucks under the 9<sup>th</sup> Street Bridge at Mile 34.6 (CORPS MILE 292.7) over the Chicago Sanitary and Ship Canal. Spotters will warn of approaching vessels and move the manlift to allow vessels to pass.  
[41/24] +

**IL - LAKE MICHIGAN – Chicago Sanitary and Ship Canal – Chart 14927**

On November 8 and **November 9, 2024**, between the hours of 2200 and 0700 each day, inspectors will utilize snooper trucks under the South Harlem Avenue (I-171) Bridge at Mile 13.3 (CORPS MILE 314.0) over the Chicago Sanitary and Ship Canal. Spotters will warn of approaching vessels and move the man lift to allow vessels to pass.  
[44/24] +

**LAKE MICHIGAN – WEST**

**\*\*\*\*\*REVISED\*\*\*\*\***

**WI - LAKE MICHIGAN – Milwaukee Harbor – Chart 14924**

From March 25 through **November 27, 2024**, between the hours of 0700 and 1700, Monday through Friday, two barges 70-feet by 50-feet or smaller will be painting the Holton Street Bridge, mile 2.84, over the Milwaukee River. Containment will hang from low steel of the bridge to the barge deck. The barges will move to accommodate vessels if a 2-hour advance notice is provided by calling 262-366-5121.  
[11/24] [31/24] +

**\*\*\*\*\*REVISED\*\*\*\*\***

**WI - LAKE MICHIGAN – Milwaukee Harbor – Chart 14924**

From July 22, 2024, through **October 31, 2024**, one bridge leaf of the Cherry Street Bridge at Mile 2.29 over the Milwaukee River will be secured to masted navigation while the other bridge leaf operates normally for the passage of vessels. From November 1, 2024, through April 1, 2025, both leaves will be secured to masted navigation. Vessels able to pass under the bridge without an opening may do so at any time. Between the hours of 0600 and 1700, Monday through Saturday, three barges, 60-foot by 80-foot or smaller will be working at the bridge, the barges will monitor VHF-FM Marine Channel 16 and move if a 3-hour advance notice is provided. Mariners may also provide advance notice by radio or by calling 312-735-1639.  
[24/24] [29/24] +

**WI - LAKE MICHIGAN – Milwaukee Harbor – Chart 14924**

The Coast Guard is temporarily modifying the operating schedule that governs the Cherry Street Bridge, mile 2.29, over the Milwaukee River. The Wisconsin Department of Transportation and the City of Milwaukee have requested this temporary deviation to allow contractors to complete an extensive rehabilitation of the bridge. This temporary final rule is effective from September 26, 2024, through 11:59 p.m. on **April 1, 2025**. To view documents mentioned in this preamble as being available in the docket, go to [https:// www.regulations.gov](https://www.regulations.gov) . Type the docket number USCG–2024–0018 in the “SEARCH” box and click “SEARCH”. In the Document Type column, select “Supporting & Related Material.”  
[40/24] +

**WI - LAKE MICHIGAN – Racine Harbor – Chart 14904 - US4W133M**

On **November 9, 2024**, between the hours of 1700 and 2000, State Street Bridge at mile 0.31 over the Root River will be secured to masted navigation in conjunction with the City of Racine Holiday Parade. Vessels able to pass under the bridge without an opening may do so at any time.  
[43/24] +

## LAKE MICHIGAN – Sturgeon Bay Ship Canal – Green Bay – Fox River – Wolf River

### **WI - LAKE MICHIGAN – Green Bay – Chart 14918**

From December 1, 2026, through **March 31, 2027**, the Tilleman Memorial Bridge at mile 2.27 over the Fox River will be secured to masted navigation. Vessels able to pass under the bridge without an opening may do so at any time.

[49/23] +

\*\*\*\*\*REVISED\*\*\*\*\*

### **WI - LAKE MICHIGAN – Fox River – Chart 14916**

from October 8, 2026, through **April 8, 2027**, the Wisconsin Street Bridge at mile 56.72 over the Fox River will be secured to masted navigation and scaffolding that hangs approximately 4-feet will be installed under the bridge. Vessels able to pass under the bridge safely, without an opening may do so at any time.

[02/24] [03/24] +

### **WI - LAKE MICHIGAN – Sturgeon Bay Ship Canal – Chart 14919**

From October 14 through **October 31, 2024**, between the hours of 0700 and 1600, Monday through Thursday, the Michigan Street Bridge at Mile 4.3 over the Sturgeon Bay Ship Canal will be secured to masted navigation due to maintenance. Vessels able to pass under the bridge without an opening may do so at any time. There will be an opening at noon each day for vessels waiting at the bridge.

[32/24] +

\*\*\*\*\*REVISED\*\*\*\*\*

### **WI - LAKE MICHIGAN – Fox River – Chart 14916**

From October 3 through **November 15, 2024**, between the hours of 0730 to 1900, Monday through Friday two 60-foot by 30-foot or smaller barges will be working at the proposed South Bridge Connector Bridge at mile 9.94 over the Fox River. The barges will monitor VHF-FM Marine Channel 16 and make passing arrangements with other vessels. +

[40/24] [41/24]

### **WI - LAKE MICHIGAN – Fox River – Chart 14916**

From January 27 through **February 21, 2025**, the Ray Nitschke Bridge at mile 1.58, over the Fox River will be secured to masted navigation for maintenance. Vessels able to pass under the bridge without an opening may do so at any time.

[41/24] +

## LAKE SUPERIOR

### **WI - LAKE SUPERIOR – Duluth-Superior Harbor – Chart 14975**

From October 3 through **November 11, 2024**, scaffolding will be installed that hangs approximately 10-feet below low steel of the Bong Bridge at Mile 5.20 over the St. Louis Bay and River. Two 40-foot by 60-foot barges will be making repairs to the bridge piers, these barges will move as needed and can be contacted on VHF-FM Marine Channel 16.

[36/24] +

## RAINY LAKE, RAINY RIVER, LAKE OF THE WOODS, WISCONSIN RIVER, MISSISSIPPI RIVER, & RED RIVER OF THE NORTH

(Revised 04/23) NINTH DISTRICT DRAWBRIDGE SIGNALS OR OPERATIONAL DELAYS FORM

TO: Commander (dpb)  
Ninth Coast Guard District  
1240 E. 9<sup>th</sup> Street – Room 2047b  
Cleveland, Ohio 44199-2060  
Phone: (216) 902-6087  
Fax: (216) 902-6088  
E-Mail: [William.B.Stanifer@uscg.mil](mailto:William.B.Stanifer@uscg.mil), [Lee.D.Soule@uscg.mil](mailto:Lee.D.Soule@uscg.mil), and [Michael.O.Walker2@uscg.mil](mailto:Michael.O.Walker2@uscg.mil)

DATE: \_\_\_\_\_  
*NOTE: Reports of Delay will be processed only when all items are fully addressed and reports submitted within 15 days of reported delay / difficulty. Attach additional sheets if necessary.*

CONFIDENTIALITY: Please check here if you wish to keep names of vessels and persons confidential

1. DATE OF DELAY: \_\_\_\_\_ 2. VESSEL NAME: \_\_\_\_\_ 3.  INBOUND  OUTBOUND

(\*\*\*NOTE: You must provide the following from Coast Pilot 6.\*\*\*)

4. BRIDGE NAME \_\_\_\_\_ 5. WATERWAY \_\_\_\_\_

6. MILE MARKER \_\_\_\_\_

7. WHAT TIME DID YOU ARRIVE AT THE BRIDGE? \_\_\_\_\_ 8. DID YOU SIGNAL FOR AN OPENING AT THAT TIME?  Y  N

9. HOW DID YOU SIGNAL?  Sound signal (Whistle, horn, megaphone, hailer, etc.) \_\_\_\_\_

(Check all that apply)  Visual signal (Flag or Light) \_\_\_\_\_

Radio telephone (Specify Frequency) \_\_\_\_\_

10. WHEN DID THE BRIDGE REPLY? \_\_\_\_\_ 11. WHAT DID THE DRAWTENDER SAY? \_\_\_\_\_

12. DID YOU COMMUNICATE WITH THE BRIDGE AFTER YOUR ARRIVAL? PLEASE PROVIDE DETAILS INCLUDING TIMES, WHAT YOU SAID, AND WHAT THE BRIDGE SAID? \_\_\_\_\_

13. WHAT TIME DID THE BRIDGE OPEN? \_\_\_\_\_ 14. WHAT TIME DID YOU START THROUGH? \_\_\_\_\_

15. WHAT TIME DID YOU CLEAR? \_\_\_\_\_ 16. WHAT ACTIONS DID YOU TAKE WHILE YOU WAITED FOR THE BRIDGE TO OPEN (e.g. tie up, hold position, use thrusters, return to dock)? \_\_\_\_\_

17. DESCRIBE ANY WEATHER OR WATER CONDITIONS THAT AFFECTED MANUEVERABILITY WHILE YOU WAITED? \_\_\_\_\_

18. DESCRIBE WHETHER ANY PEDESTRIANS, VEHICLES, OR TRAINS WERE STOPPED ON THE BRIDGE OR CROSSING THE BRIDGE? PROVIDE AS MUCH DETAIL AS POSSIBLE. \_\_\_\_\_

19. PROVIDE ANY ADDITIONAL INFORMATION YOU THINK WOULD BE HELPFUL? \_\_\_\_\_

20. YOUR NAME, E-MAIL, PHONE NUMBER, AND ADDRESS: \_\_\_\_\_

\_\_\_\_\_  
SIGNATURE OF REPORTING SOURCE





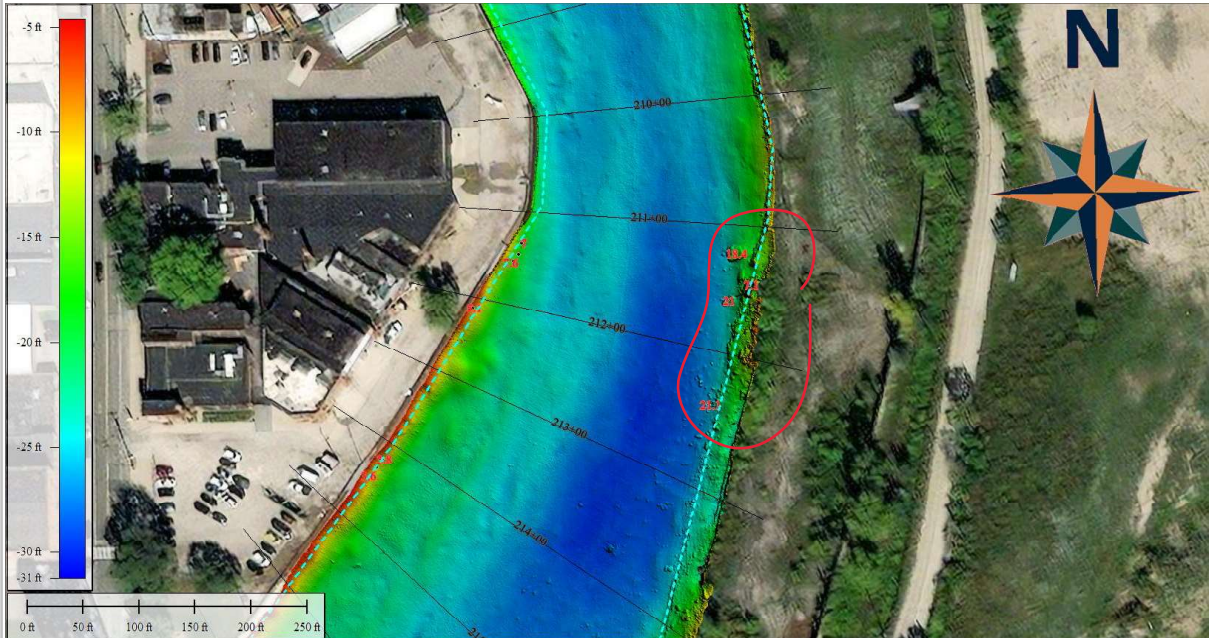
# CHANNEL OBSTRUCTION REPORT

## U.S. Army Corps of Engineers – Buffalo District

PROJECT NAME: Cuyahoga River  
DATE OBSERVED: 12/07/2023  
CREW: D. Banning, D. Bognar

OBJECT: Multiple unknown  
LATITUDE: 41° 29' 23.1785" N  
LONGITUDE: 81° 41' 54.1661" W

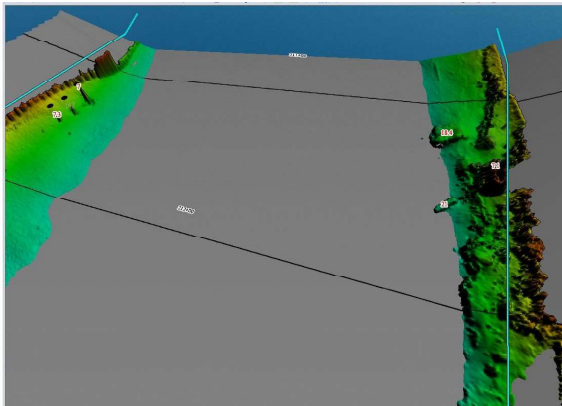
### SURVEY DATA



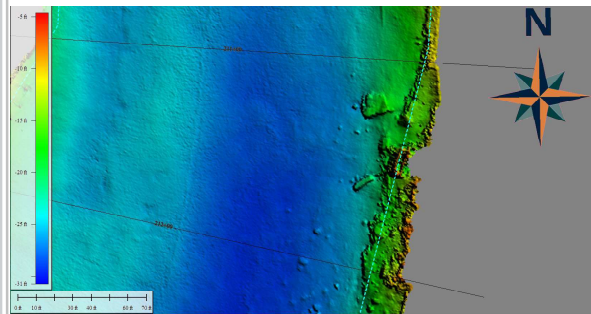
Multiple objects along easterly edge of Federal Channel between Sta. 211+00 & 213+00. Object Depths shown in red. Federal Channel shown in cyan.

View: NE down channel line

Hypack Channel View



3D view of channel bottom showing only areas that are shoaler than project depth of 23ft.



Close up view of area.



Waterway Analysis and Management System Survey

Name of Waterway: \_\_\_\_\_

User Information

\_\_\_ Commercial User

\_\_\_ Recreational User

Number of years in the maritime industry or number of years using this waterway: \_\_\_\_\_

Number of transits in the waterway per year: \_\_\_\_\_

Number of night transits of waterway: \_\_\_\_\_

Seasonal Dates: Start: \_\_\_\_\_ End: \_\_\_\_\_

Name of Vessel: \_\_\_\_\_

Vessel Description: \_\_\_\_\_

Length: \_\_\_\_\_ Beam: \_\_\_\_\_ Draft: \_\_\_\_\_ Gross Tons: \_\_\_\_\_

Net Tons: \_\_\_\_\_ Bridge Height of Eye: \_\_\_\_\_

Cargo Carried: \_\_\_\_\_

Navigational tools used: (ECDIS/ECPINS, GPS, DGPS, VISUAL, RADAR) \_\_\_\_\_

\_\_\_\_\_  
\_\_\_\_\_  
\_\_\_\_\_

What area do you believe is the most dangerous or difficult to navigate: \_\_\_\_\_

\_\_\_\_\_  
\_\_\_\_\_  
\_\_\_\_\_

Are the floating aids to navigation (lighted and unlighted buoys) adequate for this waterway:

\_\_\_\_\_

---

---

---

Are the fixed aids to navigation (lights, ranges, lighthouses, daybeacons) adequate for this waterway: \_\_\_\_\_

---

---

---

Are the year round and lighted ice buoys adequate: \_\_\_\_\_

---

---

---

Are there buoys that you feel should be changed to fixed aids to navigation?

---

---

---

---

---

Are there any buoys that could be eliminated from this waterway: \_\_\_\_\_

---

---

---

Are there any buoys with sound signals that the bell or gong could be removed:

---

---

---

Are there any areas that require additional aids to navigation in this waterway:

---

---

---

Do the nautical charts, Coast Pilot, and Light List meet your needs for this waterway: \_\_\_\_\_

---

---

---

---

Are there private Aids to Navigation that you find misleading or interfere with the current system in the waterway:

---

---

---

Any addition comments on this waterway: \_\_\_\_\_

---

---

---

---

Thank you for taking time to comment on this waterway. Your input as a mariner very valuable to the U. S. Coast Guard in evaluating waterways to make them safe and as easily navigable as possible. Please feel free to contact [D09-DG-District-D9-ATON-Support@uscg.mil](mailto:D09-DG-District-D9-ATON-Support@uscg.mil) with any other questions or concerns about any aids to navigation in the Great Lakes. The survey can be mailed to:

Commander (dpw-2)  
Ninth Coast Guard District  
1240 East Ninth Street  
Cleveland, Ohio 44199

---