



U.S. Department
of Homeland Security
**United States
Coast Guard**

LOCAL NOTICE TO MARINERS

District: 9

Week: 24/23

Issued by: Commander (dpw)
Ninth Coast Guard District
1240 East Ninth Street,
Cleveland, OH 44199-2060
Telephone: (216) 902-6069

Direct questions about this LNM to the above address.

All distances in this publication are STATUTE MILES unless otherwise noted.*

District Nine Internet Address <https://www.atlanticarea.uscg.mil/Our-Organization/District-9/>

District Nine Local Notice to Mariners email Address D09-DG-District-D9-LocalNoticetoMariners@uscg.mil

** Navigation Information Service watchstander, 24 hours a day at (703) 313-5900 ** **Internet Address** <https://www.navcen.uscg.gov/>

Light List Reference: Commandant Publication P16502.7, VOL VII, 2023 Edition

Coast Pilot Reference: 2022 U.S. Coast Pilot 6 Great Lakes 52nd Edition

Coast Pilots, along with corrections are available at: <https://nauticalcharts.noaa.gov/publications/coast-pilot/index.html>

The Local Notice to Mariners is available on the Internet at <https://www.navcen.uscg.gov/local-notices-to-mariners-by-cg-district> You will also have links to other government agencies- web pages including the US Army Corps of Engineers and the National Ocean Service.

REPORT DISCREPANCIES IN AIDS TO NAVIGATION TO THE NEAREST COAST GUARD UNIT

The Ninth District and all Sector offices for their areas of responsibility issue a BROADCAST NOTICE TO MARINERS.

The following Broadcast Notice to Mariners have been incorporated into this week's Local Notice to Mariners:

Sector Buffalo, NY - B086-23 through B090-23

Ninth District - C079-23 through C082-23

Sector Detroit, MI - D040-22 through D040-23

Sector Lake Michigan, WI - M136-23 through M143-23

Sector Sault Ste Marie, MI - S060-23 through S061-23

The United States Coast Guard Navigation Information Service (NIS), operated by the USCG Navigation Center, is staffed 24 hours a day, 7 days a week. The NIS provides information on the current operational status, effective policies, and general information for GPS and DGPS. The

NIS also disseminates Safety Broadcasts (BNM), Local Notice to Mariners (LNM), and the latest Notice Advisory to Navstar Users (NANU). NANU notices can be obtained via email subscription through the USCG Navigation Center website: <https://cgl.uscg.mil/mailman/listinfo/nanu>. In addition, the NIS investigates all reports of degradation or loss of GPS, DGPS or AIS service. Users are encouraged to report all degradation or loss of radio navigation services to the NIS via any of the following: Phone: (703) 313-5900, mail to: webmaster@smtp.navcen.uscg.mil, or on the internet at: <https://www.navcen.uscg.gov>

ABBREVIATIONS

A through H

ADRIFT - Buoy Adrift
AICW - Atlantic Intracoastal Waterway
AI - Alternating
B - Buoy
BKW - Breakwater
bl - Blast
BNM - Broadcast Notice to Mariner
bu - Blue
C - Canadian
CHAN - Channel
CGD - Coast Guard District
C/O - Cut Off
CONT - Contour
CRK - Creek
CONST - Construction
DAYMK/Daymk - Daymark
DBN/Dbn - Daybeacon
DBD/DAYBD - Dayboard
DEFAC - Defaced
DEST - Destroyed

I through O

I - Interrupted
ICW - Intracoastal Waterway
IMCH - Improper Characteristic
INL - Inlet
INOP - Not Operating
INT - Intensity
ISL - Islet
Iso - Isophase
kHz - Kilohertz
LAT - Latitude
LB - Lighted Buoy
LBB - Lighted Bell Buoy
LHB - Lighted Horn Buoy
LGB - Lighted Gong Buoy
LONG - Longitude
LNM - Local Notice to Mariners
LT - Light
LT CONT - Light Continuous
LTR - Letter
LWB - Lighted Whistle Buoy

P through Z

PRIV - Private Aid
Q - Quick
R - Red
RACON - Radar Transponder Beacon
Ra ref - Radar reflector
RBN - Radio Beacon
REBUILT - Aid Rebuilt
RECOVERED - Aid Recovered
RED - Red Buoy
REFL - Reflective
RRL - Range Rear Light
RELIGHTED - Aid Relit
RELOC - Relocated
RESET ON STATION - Aid Reset on Station
RFL - Range Front Light
RIV - River
RRASS - Remote Radio Activated Sound Signal
s - seconds
SEC - Section
SHL - Shoaling

DISCON - Discontinued
DMGD/DAMGD - Damaged
ec - eclipse
EST - Established Aid
ev - every
EVAL - Evaluation
EXT - Extinguished
F - Fixed
fl - flash
Fl - Flashing
G - Green
GIWW - Gulf Intracoastal Waterway
HAZ - Hazard to Navigation
HBR - Harbor
HOR - Horizontal Clearance
HT - Height

LWP - Left Watching Properly
MHz - Megahertz
MISS/MSNG - Missing
Mo - Morse Code
MRASS - Marine Radio Activated Sound Signal
MSLD - Misleading
N/C - Not Charted
NGA - National Geospatial-Intelligence Agency
NO/NUM - Number
NOS - National Ocean Service
NW - Notice Writer
OBSCU - Obscured
OBST - Obstruction
OBSTR - Obstruction
Oc - Occulting
ODAS - Anchored Oceanographic Data Buoy

si - silent
SIG - Signal
SND - Sound
SPM - Single Point Mooring Buoy
SS - Sound Signal
STA - Station
STRUCT - Structure
St M - Statute Mile
TEMP - Temporary Aid Change
TMK - Topmark
TRLB - Temporarily Replaced by Lighted Buoy
TRLT - Temporarily Replaced by Light
TRUB - Temporarily Replaced by Unlighted Buoy
USACE - Army Corps of Engineers
W - White
Y - Yellow

Additional Abbreviations Specific to this LNM Edition:

LIB - Lighted Ice Buoy

SECTION I - SPECIAL NOTICES

This section contains information of special concern to the Mariner.

Cancellation of NOAA Paper and Raster Nautical Charts

The National Oceanic and Atmospheric Administration (NOAA) is undertaking a multi-year program to end production and maintenance of its suite of over 1,000 traditional paper nautical charts and all associated raster chart products and services, including: Print-on-Demand (POD) paper nautical charts, Full-size chart PDF files, BookletChart™ PDF files, NOAA raster navigational charts (NOAA RNC®), the NOAA RNC tile service, and the online RNC viewer.

Six months notice of the intent to cancel a specific chart is provided in a "Last Edition" notice. The final cancellation of a chart is made in a "Canceled" notice. Both types of notices will appear in LNM Section IV, "Chart Correction." A comprehensive list of all canceled NOAA charts is available at: <http://www.charts.noaa.gov/MCD/Dole.shtml>.

Traditional paper nautical chart production is ending to enable the creation and maintenance of larger scale, more up-to-date, higher quality coverage of NOAA's electronic navigational chart (NOAA ENC®) product. This will significantly enhance the amount of charted detail available to mariners. More information about NOAA's program to sunset traditional paper charts is on the NOAA Coast Survey website at: <https://nauticalcharts.noaa.gov/charts/farewell-to-traditional-nautical-charts.html>

An online NOAA Custom Chart application at: <https://devgis.charttools.noaa.gov/pod> is available to create chart images from ENC data, which may then be printed. Notices to Mariners will not be issued for NOAA Custom Charts.

LNM: 04/20

SAFETY NOTICE - NAVIGATIONAL RANGE AND SECTOR LIGHTS ON ELECTRONIC CHARTS

The U.S. Coast Guard has become aware that the Range and Sector Light Characteristic labels are not displayed on Electronic Navigational Charts (ENCs) when used in an Electronic Chart Display and Information System (ECDIS) due to limitations of the S-52 ECDIS display specification. Mariners may query the ENC data directly within ECDIS or refer to the Light List for complete information on Range and Sector Light Characteristics.

LNM: 39/22

2023 Light List

2023 Light Lists are now available on the USCG Navigation Center's website at: <https://www.navcen.uscg.gov/light-list-annual-publication>. Coast Guard Light Lists are a means for communicating aids to navigation information to the maritime public. Local Notice to Mariners will continue to advise Light List corrections and NAVCEN will continue to publish a compilation of corrections. Complete versions of the 2023 Light Lists are updated weekly on the NAVCEN website and mariners should download applicable copies and updates as needed at: <https://www.navcen.uscg.gov/weekly-light-lists>. A summary of weekly 2023 Light List corrections are available at: <https://www.navcen.uscg.gov/light-list-summary-of-corrections>.

LNM: 05/23

USACE NOTICE TO NAVIGATION INTERESTS

Current Federal Channel conditions, shoaling, and the most recent channel surveys are available at the following Army Corps of Engineers web sites:

Buffalo: <http://www.lrb.usace.army.mil/>
Detroit: <http://www.lre.usace.army.mil/>

Chicago: <http://www.lrc.usace.army.mil/>
Rock Island: <http://www.mvr.usace.army.mil/>
St. Paul: <https://www.mvp.usace.army.mil/>

LNLM: 28/12

GREAT LAKES - Great Lakes Water Levels

See Enclosure 1

The current and four week expected water level table for the Great Lakes, Connecting Channels and the St. Lawrence River, will be published in Enclosure 1 following SECTION VIII - LIGHT LIST CORRECTIONS of the Local Notice to Mariner or by visiting the link below:

<https://www.lre.usace.army.mil/Missions/Great-Lakes-Information/Great-Lakes-Water-Levels/Water-Level-Forecast/Connecting-Channels-Forecast/>

LNLM: 32/20

LAKE ERIE – Fairport Harbor – Chart 14829

The Coast Guard has established a virtual AIS aid to navigation at the entrance of Fairport Harbor to assist in identifying recent shoaling within the channel. The aid (MMSI: 993682815) is labeled W SHOAL 2 and identifies the encroachment of shoaling on the western side of the channel less than 18.5ft water depth. The aid is for reference only and is positioned based on most recent survey data, and does not account for periodic variations in the position of the shoal. Mariners are urged to use caution while transiting the area.

LNLM: 21/23

LAKE ERIE - Maumee Bay - Chart 14847

The Coast Guard has changed the color of the lighted signal on Manhattan Range Front Light (LLNR 6105) and Manhattan Range Rear Light (LLNR 6110) from red to green in order to better distinguish the navigational signal from background lighting. The lighting characteristics of both aids have been changed from F R to F G.

LNLM: 21/23

ST. CLAIR RIVER - Flats Canal - Chart 14854

The Coast Guard has established three temporary danger buoys within the St. Clair Flats Canal, in the St. Clair River, to assist mariners in marking the partially submerged earthen dike along the southeast edge of the channel. The unlighted buoys will be evenly spaced along the dike, extending from the lower point of Seaway Island to the St. Clair Flats Danger Light (LLNR 9575). The buoy characteristics are white with orange in color and display the text "KEEP OUT" across the buoy body. The intent of the temporary project is to evaluate the effectiveness of the buoys in warning mariners of the dangers of leaving the marked channel and crossing over the submerged dike into the shallow flats east of the canal.

LNLM: 21/23

ST. MARYS RIVER - Lake Nicolet To Sault Ste. Marie- Chart 14884

Moon Island Leading Light (LLNR 13650) will be temporarily disestablished for onsite repair operations. A temporary all-around white light, characteristic QW, will be installed on site as close as reasonably possible to the permanent aid's location. The temporary light is provided as a reference only and should not be treated as a center channel leading light. Anticipated completion of the project is summer of 2023.

LNLM: 17/23

ST. MARYS RIVER - American Canal - Chart 14884

Northeast Pierhead Light (LLNR 14205) The U. S. Army Corps of Engineers will be relocating this light to the top of their new camera tower. As soon as the position and height of the light's new location is confirmed it will be advertised in Section VIII - Light List Corrections of the LNLM.

LNLM: 10/21

LAKE MICHIGAN – Muskegon Channel – Chart 14906

The Coast Guard has established a pair of virtual AIS aids to navigation at the entrance of Muskegon Harbor to assist in identifying recent shoaling within the approaches. V-AIS (MMSI: 993682821) identifies the encroachment of shoaling on the northern side of the channel less than 25ft water depth. Similarly, V-AIS (MMSI: 993682842) identifies shoaling on the south side of the channel less than 25ft. The aids are for reference only and are positioned based on most recent survey data and do not account for periodic variations in the position of the shoaling. Mariners are urged to use caution while transiting the area.

LNLM: 24/23

LAKE SUPERIOR – Keweenaw – Chart 14972

Keweenaw Upper Entrance West Breakwater Light (LLNR 15115) was reported damaged and swept from its location on the breakwall. The approximately 20' metal tower is submerged in vicinity of the breakwater at an unknown position. All mariners are urged to use caution when transiting the area.

LNLM: 12/23

LAKE SUPERIOR – Keweenaw and Isle Royale

The Coast Guard is experiencing a significant delay in the establishment of the seasonal floating aids in the Keweenaw Waterway and Isle Royale.

The specific aids impacted by this delay are listed in Section II – Discrepancies of this notice. All mariners are urged to use caution in transiting these areas.

LNM: 22/23

LAKE SUPERIOR - Duluth Harbor

The Coast Guard is experiencing a significant delay in the establishment of the seasonal floating aids inside Duluth-Superior Harbor. The specific aids impacted by this delay are listed in Section II – Discrepancies of this notice. All mariners are urged to use caution in transiting these areas.

LNM: 19/23

SECTION II - DISCREPANCIES

This section lists all reported and corrected discrepancies related to Aids to Navigation in this edition. A discrepancy is a change in the status of an aid to navigation that differs from what is published or charted.

DISCREPANCIES (FEDERAL AIDS)

LLNR	Aid Name	Status	Chart No.	BNM Ref.	LNM St	LNM End
2725	Buffalo Coast Guard Slip Light	STRUCT DMGD		B187-22	01/23	
5510	Gem Beach Access Channel Daybeacon 5	DAYMK DMGD	14842		23/23	
6895	East Outer Channel Light 1E	SS INOP	14830	D002-23	01/23	
7770	Fighting Island Channel Lighted Buoy 92	OFF STA	14853	D009-23	14/23	
8442	Grosse Pointe Dumping Grounds Buoy B	MISSING	14853	D022-23	19/23	
8472	Grosse Pointe Dumping Grounds Buoy A	MISSING	14853	D023-23	19/23	
12260	Penny Island Point Lighted Buoy 1	MISSING		S056-23	22/23	
13055	Munuscong Channel (Upbound) Lighted Buoy 6	LT EXT		S052-23	20/23	
13345	Middle Neebish Channel Lighted Buoy 59	LT EXT		S058-23	23/23	
13390	Lake Nicolet Lighted Buoy 65	LT EXT		S049-23	19/23	
13475	West Neebish Channel (Downbound) Upper Range Rear Light	LT EXT/DAYMK MISSING		S039-23	51/21	
13515	West Neebish Channel (Downbound) Oak Ridge Range Front Light	DAYMK MISSING			50/22	
14050	Six Mile Point Range Rear Light	DAYMK MISSING		S154-22	10/21	
14710	Big Bay Point Buoy 1	MISSING			24/23	
14775	Keweenaw Waterway Lighted Buoy 1	MISSING			24/23	
14785	Keweenaw Waterway Lighted Buoy 4	MISSING			24/23	
14890	Keweenaw Waterway Lighted Buoy 27	MISSING		S061-23	24/23	
14900	Keweenaw Waterway Junction Lighted Buoy "KW"	MISSING			24/23	
14945	Keweenaw Waterway Lighted Buoy 31	TRUB			24/23	
14960	Keweenaw Waterway Lighted Buoy 35	MISSING			24/23	
14975	Atlantic Point Lighted Buoy 37	MISSING			24/23	
14990	Keweenaw Waterway Lighted Buoy 42	MISSING			24/23	
15015	Keweenaw Waterway Lighted Buoy 49	TRUB			24/23	
15025	Keweenaw Waterway Lighted Buoy 50	TRUB			24/23	
15030	Keweenaw Waterway Lighted Buoy 51	TRUB			24/23	
15080	Keweenaw Waterway Lighted Buoy 61	TRUB			24/23	

15115	Keweenaw Upper Entrance West Breakwater Light	STRUCT DEST	S015-23	02/23
15155	Keweenaw Point Lighted Buoy 1	MISSING		24/23
15680	Superior Harbor Basin Lighted Buoy 4	MISSING		24/23
15750	Superior Front Channel Lighted Buoy 1	TRUB		24/23
15765	Superior Front Channel Lighted Buoy 5	TRUB		24/23
15770	Superior Front Channel Lighted Buoy 6	MISSING		24/23
15785	Superior Front Channel Lighted Buoy 9	TRUB		24/23
15790	Superior Front Channel Lighted Buoy 10	MISSING		24/23
15805	Superior Front Channel Lighted Buoy 14	MISSING		24/23
15820	Superior Front Channel Lighted Buoy 18	TRUB		24/23
15875	Duluth Harbor Basin Lighted Buoy 2	TRUB	S036-23	13/23
16030	St. Louis Bay North Channel (Western Section) Lighted Buoy 3	TRUB		24/23
16055	St Louis Bay Junction Lighted Buoy	TRUB		24/23
16070	St. Louis Bay South Channel (Eastern Section) Lighted Buoy 2A	TRUB		24/23
16090	St. Louis Bay Cross Channel Lighted Buoy 2	TRUB		24/23
16095	St. Louis Bay Cross Channel Lighted Buoy 1	TRUB		24/23
16105	St. Louis Bay Cross Channel Lighted Buoy 6	TRUB		24/23
16145	St. Louis Bay South Channel (Western Section) Lighted Buoy 9	MISSING		24/23
16165	St. Louis Bay South Channel (Western Section) Lighted Buoy 13	MISSING		24/23
16180	St. Louis River Upper Channel Lighted Buoy 4	TRUB		24/23
16205	Minnesota Channel (Eastern Section) Lighted Buoy 6	TRUB		24/23
16210	Minnesota Channel (Eastern Section) Lighted Buoy 7	TRUB		24/23
16220	Minnesota Channel (Eastern Section) Lighted Buoy 9	TRUB		24/23
16225	Minnesota Channel (Eastern Section) Lighted Buoy 10	TRUB		24/23
16235	Minnesota Channel (Eastern Section) Lighted Buoy 14	MISSING		24/23
16240	Minnesota Channel (Eastern Section) Lighted Buoy 15	MISSING		24/23
16250	Minnesota Channel (Eastern Section) Lighted Buoy 19	MISSING		24/23
16650	Hat Point Lighted Bell Buoy 1	MISSING		24/23
16680	Cumberland Point Buoy 2	MISSING		24/23
16695	Siskiwit Bay Passage Lighted Buoy 2	MISSING		24/23
16705	Harlem Reef Buoy 2	MISSING		24/23
16715	Malone Bay Entrance Buoy 2	MISSING		24/23
16720	Malone Bay Entrance Buoy 3	MISSING		24/23
16725	Malone Bay Buoy 4	MISSING		24/23
16730	Malone Bay Buoy 5	MISSING		24/23
16770	Middle Island Passage Lighted Bell Buoy 2	TRUB		24/23
16825	Blake Point Five-Foot Shoal Buoy D	MISSING		24/23
17210	Canoe Channel Daybeacon 8	STRUCT DEST/TRUB		23/22
17550	Kabetogama Lake Warning Daybeacon	STRUCT DEST	S114-22	34/22

17745	New Shoal Lighted Bell Buoy 3	MISSING	14880	S035-23	13/23
17810	Beaver Island Shoal Northeast End Lighted Buoy 1	MISSING			24/23
17830	St. James Harbor Buoy 6	MISSING			24/23
17835	St. James Harbor Buoy 7	MISSING			24/23
17840	St. James Harbor Buoy 8	MISSING			24/23
18620	Pentwater North Pierhead Light 3	SS INOP	14901	M070-23	16/23
18815	Bank Point Light	DAYMK MISSING		M092-23	16/23
19025	Grand River Buoy 10	OFF STA		M136-23	23/23
19310	Lake Macatawa Lighted Buoy 1	TRUB			24/23
19350	Lake Macatawa Lighted Buoy 6	TRUB			24/23
19385	Lake Macatawa Lighted Buoy 10	TRUB			24/23
19400	Lake Macatawa Lighted Buoy 14	TRUB			24/23
19410	Lake Macatawa Lighted Buoy 16	TRUB			24/23
19420	Lake Macatawa Lighted Buoy 19	TRUB			24/23
19445	Saugatuck South Pierhead Light	SS INOP	14906	M117-23	22/23
19790	Chicago Lake Front Northeast Shoal Lighted Buoy 2	RAC INOP	14905	M098-23	20/23
20430	Kenosha Breakwater Light	REDUCED INT	14904	M123-23	22/23
22180	Green Bay Harbor Entrance Channel Range Front Light	DAYMK DMGD		M327-22	24/21
22185	Green Bay Harbor Entrance Channel Range Rear Light	DAYMK MISSING			44/20

DISCREPANCIES (FEDERAL AIDS) CORRECTED

LLNR	Aid Name	Status	Chart No.	BNM Ref.	LNM St	LNM End
615	St. Lawrence Seaway Lighted Buoy 93	RESET ON STATION			23/23	24/23

DISCREPANCIES (PRIVATE AIDS)

LLNR	Aid Name	Status	Chart No.	BNM Ref.	LNM St	LNM End
2740	Buffalo River Light 5	LT EXT			23/23	
3975	Wildwood Park West Detached Breakwater Light	DAYMK MISSING			23/23	
4104	Bkl Regulated Navigation Area Light	LT EXT			23/23	
4190	Whiskey Island Marina Entrance Light 1	LT EXT			23/23	
4240	Cuyahoga River Abutment Light	LT EXT			27/22	
5247	Johnson Island Light 1	LT EXT	14842	D007-23	11/23	
12585	Old Round Island Point Light	LT EXT		S006-23	01/23	
19860	Filtration Plant Breakwater South End Light	LT EXT			16/23	
19925	Four-Mile Crib Light	LT IMCH			24/23	
20260	Highland Park Breakwater Light	LT EXT	14905	M015-23	04/23	
20470	Racine Launch Basin Entrance Light	LT IMCH	14904		22/23	
20490	Racine East Harbor Entrance Light 2	LT EXT	14904		22/23	
20505	Racine Harbor Channel Lighted Buoy 4	MISSING			22/23	
20510	Racine Harbor Channel Lighted Buoy 6	MISSING			22/23	
20520	Racine Harbor Channel Lighted Buoy 8	MISSING			22/23	
20525	Racine Harbor Channel Lighted Buoy 10	MISSING			22/23	
20530	Racine Harbor Channel Lighted Buoy 12	MISSING			22/23	
20535	Racine Harbor Preferred Channel Lighted Buoy	MISSING			22/23	
20540	Racine Harbor Light 14	MISSING			22/23	
20545	Racine Harbor Light 13	MISSING			22/23	

DISCREPANCIES (PRIVATE AIDS) CORRECTED

LLNR	Aid Name	Status	Chart No.	BNM Ref.	LNM St	LNM End
4035	Cleveland Intake Lighted Buoy	WATCHING PROPERLY			23/23	24/23
4256	Cashelmara Jetty Light	WATCHING PROPERLY	14829		21/23	24/23
5305	East Harbor Entrance Light 1	WATCHING PROPERLY	14842		21/23	

PLATFORM DISCREPANCIES

Name	Status	Position	BNM Ref.	LNM St	LNM End
------	--------	----------	----------	--------	---------

None**PLATFORM DISCREPANCIES CORRECTED**

Name	Status	Position	BNM Ref.	LNM St	LNM End
------	--------	----------	----------	--------	---------

None**SECTION III - TEMPORARY CHANGES and TEMPORARY CHANGES CORRECTED**

This section contains temporary changes and corrections to Aids to Navigation for this edition. When charted aids are temporarily relocated for dredging, testing, evaluation, or marking an obstruction, a temporary correction shall be listed in Section IV giving the new position.

TEMPORARY CHANGES

LLNR	Aid Name	Status	Chart No.	BNM Ref.	LNM St	LNM End
2105	Oswego Harbor West Channel Light 2	TRLB	14786		17/19	
2720	Buffalo Harbor North Entrance Light 7	DISCONTINUED			33/19	
3480	Barcelona Harbor East Breakwater Light	DISCONTINUED FOR DREDGING			23/22	
3485	Barcelona Harbor West Breakwater Light	DISCONTINUED FOR DREDGING			23/22	
5435	West Harbor Inner Channel Daybeacon 12	TRUB	14842		33/21	
5470	West Harbor Inner Channel Daybeacon 14	TRUB	14842		48/20	
8240	William Livingstone Memorial Light	Reduced Intensity	14853		33/21	
9690	Grande Pointe Light 23	TRLT	14853		47/20	
14540	Little Lake Harbor Light 2	DISCONTINUED FOR DREDGING	14961		47/22	
15220	Ontonagon Harbor East Breakwater Light	DISCONTINUED			02/22	
16963	Driftwood Point Light	DISCONTINUED			45/20	

TEMPORARY CHANGES CORRECTED

LLNR	Aid Name	Status	Chart No.	BNM Ref.	LNM St	LNM End
------	----------	--------	-----------	----------	--------	---------

None**PLATFORM TEMPORARY CHANGES**

Name	Status	Position	BNM Ref.	LNM St	LNM End
------	--------	----------	----------	--------	---------

None**PLATFORM TEMPORARY CHANGES CORRECTED**

Name	Status	Position	BNM Ref.	LNM St	LNM End
------	--------	----------	----------	--------	---------

None

SECTION IV - CHART CORRECTIONS

This section contains corrections to federally and privately maintained Aids to Navigation, as well as NOS corrections.

This section contains corrective actions affecting chart(s). Corrections appear numerically by chart number, and pertain to that chart only. It is up to the mariner to decide which chart(s) are to be corrected. The following example explains individual elements of a typical chart correction.

Chart Number	Chart Edition	Edition Date	Last Local Notice to Mariners	Horizontal Datum Reference	Source of Correction	Current Local Notice to Mariners
12327	91st Ed.	19-APR-97	Last LNM: 26/97	NAD 83		27/97
Chart Title: NY-NJ-NEW YORK HARBOR - RARITAN RIVER						
Main Panel 2245 NEW YORK HARBOR						
(Temp) ADD	NATIONAL DOCK CHANNEL BUOY 3				CGD01	074-02-48.001W
	Green can	Object of Corrective Action		Position		
Corrective Action						

(Temp) indicates that the chart correction action is temporary in nature. Courses and bearings are given in degrees clockwise from 000 true. Bearings of light sectors are toward the light from seaward. The nominal range of lights is expressed in nautical miles (NM) unless otherwise noted.

14810 **6th Ed.** **01-JAN-15** **Last LNM: 16/17** **NAD 83** **24/23**

Chart Title: **Olcott Harbor to Toronto; Olcott and Wilson Harbors**

Main Panel 1004 OLCOTT NY TO TORONTO ONT. Page/Side: A

		NOS	
LAST EDITION	No new editions of chart 14810 will be published. It will be canceled on 04-Oct-23. Comparable or larger scale Electronic Navigational Chart (ENC) coverage is available. See "Cancellation of NOAA Paper and Raster Nautical Charts" in Section I of this LNM for details. A list of all canceled NOAA charts is at https://www.charts.noaa.gov/MCD/Dole.shtml .	--	--

14828 **7th Ed.** **01-JUN-16** **Last LNM: 49/11** **NAD 83** **24/23**

Chart Title: **Erie to Geneva**

Main Panel 1364 ERIE TO GENEVA. Page/Side: A

		NOS	
LAST EDITION	No new editions of chart 14828 will be published. It will be canceled on 04-Oct-23. Comparable or larger scale Electronic Navigational Chart (ENC) coverage is available. See "Cancellation of NOAA Paper and Raster Nautical Charts" in Section I of this LNM for details. A list of all canceled NOAA charts is at https://www.charts.noaa.gov/MCD/Dole.shtml .	--	--

14829 **7th Ed.** **01-MAY-15** **Last LNM: 48/19** **NAD 83** **24/23**

Chart Title: **Geneva to Lorain; Beaver Creek; Rocky River; Mentor Harbor; Chagrin River**

Main Panel 1572 GENEVA TO LORAIN. Page/Side: A

		NOS	
LAST EDITION	No new editions of chart 14829 will be published. It will be canceled on 04-Oct-23. Comparable or larger scale Electronic Navigational Chart (ENC) coverage is available. See "Cancellation of NOAA Paper and Raster Nautical Charts" in Section I of this LNM for details. A list of all canceled NOAA charts is at https://www.charts.noaa.gov/MCD/Dole.shtml .	--	--

14830 **34th Ed.** **01-FEB-19** **Last LNM: 38/18** **NAD 83** **24/23**

Chart Title: **West End of Lake Erie; Port Clinton Harbor; Monroe Harbor; Lorain to Detroit River; Vermilion**

Main Panel 1151 WEST END OF LAKE ERIE - -. Page/Side: -

		NOS	
LAST EDITION	No new editions of chart 14830 will be published. It will be canceled on 05-Jul-23. Comparable or larger scale Electronic Navigational Chart (ENC) coverage is available. See "Cancellation of NOAA Paper and Raster Nautical Charts" in Section I of this LNM for details. A list of all canceled NOAA charts is at https://www.charts.noaa.gov/MCD/Dole.shtml .	--	--

14838 **4th Ed.** **01-APR-05** **Last LNM: 43/14** **NAD 83** **24/23**

Chart Title: **Buffalo to Erie; Dunkirk; Barcelone Harbor**

Main Panel 1139 BUFFALO TO ERIE. Page/Side: N/A

		NOS	
LAST EDITION	No new editions of chart 14838 will be published. It will be canceled on 04-Oct-23. Comparable or larger scale Electronic Navigational Chart (ENC) coverage is available. See "Cancellation of NOAA Paper and Raster Nautical Charts" in Section I of this LNM for details. A list of all canceled NOAA charts is at https://www.charts.noaa.gov/MCD/Dole.shtml .	--	--

14842 **17th Ed.** **01-NOV-18** **Last LNM: 38/17** **NAD 83** **24/23**

Chart Title: **SMALL-CRAFT BOOK CHART - Port Clinton to Sandusky, including the Islands (book of 35 charts)**

Main Panel 1163 SOUTH SHORE LAKE ERIE PORT CLINTON TO SANDUSKY 2 - -. Page/Side: -

NOS

LAST EDITION No new editions of chart 14842 will be published. It will be canceled on 04-Oct-23. Comparable or larger scale Electronic Navigational Chart (ENC) coverage is available. See "Cancellation of NOAA Paper and Raster Nautical Charts" in Section I of this LNM for details. A list of all canceled NOAA charts is at <https://www.charts.noaa.gov/MCD/Dole.shtml>. --

14844 34th Ed. 01-JUN-19 Last LNM: 27/18 NAD 83 24/23

ChartTitle: Islands in Lake Erie;Put-In-Bay

Main Panel 1208 ISLANDS IN LAKE ERIE INCLUDING SANDUSKY BAY OHIO - -. Page/Side: -

NOS

LAST EDITION No new editions of chart 14844 will be published. It will be canceled on 04-Oct-23. Comparable or larger scale Electronic Navigational Chart (ENC) coverage is available. See "Cancellation of NOAA Paper and Raster Nautical Charts" in Section I of this LNM for details. A list of all canceled NOAA charts is at <https://www.charts.noaa.gov/MCD/Dole.shtml>. --

14846 16th Ed. 01-NOV-18 Last LNM: 38/18 NAD 83 24/23

ChartTitle: SMALL-CRAFT BOOK CHART - West End of Lake Erie from Perrysburg, OH., of the Maumee R. to Huron R., Mich., and Bar Pt., Ont. (book of 34 charts)

Inset 1211 WEST END OF LAKE ERIE PAGE 2 - -. Page/Side: -

NOS

LAST EDITION No new editions of chart 14846 will be published. It will be canceled on 04-Oct-23. Comparable or larger scale Electronic Navigational Chart (ENC) coverage is available. See "Cancellation of NOAA Paper and Raster Nautical Charts" in Section I of this LNM for details. A list of all canceled NOAA charts is at <https://www.charts.noaa.gov/MCD/Dole.shtml>. --

14847 31st Ed. 01-FEB-05 Last LNM: 12/17 NAD 83 24/23

ChartTitle: Toledo Harbor;Entrance Channel to Harbor

Main Panel 1250 TOLEDO HARBOR OHIO. Page/Side: N/A

NOS

LAST EDITION No new editions of chart 14847 will be published. It will be canceled on 05-Jul-23. Comparable or larger scale Electronic Navigational Chart (ENC) coverage is available. See "Cancellation of NOAA Paper and Raster Nautical Charts" in Section I of this LNM for details. A list of all canceled NOAA charts is at <https://www.charts.noaa.gov/MCD/Dole.shtml>. --

14848 60th Ed. 01-OCT-18 Last LNM: 04/17 NAD 83 24/23

ChartTitle: Detroit River

Main Panel 1252 DETROIT RIVER MICHIGAN - -. Page/Side: -

NOS

LAST EDITION No new editions of chart 14848 will be published. It will be canceled on 05-Jul-23. Comparable or larger scale Electronic Navigational Chart (ENC) coverage is available. See "Cancellation of NOAA Paper and Raster Nautical Charts" in Section I of this LNM for details. A list of all canceled NOAA charts is at <https://www.charts.noaa.gov/MCD/Dole.shtml>. --

14850 56th Ed. 01-DEC-18 Last LNM: 44/21 NAD 83 24/23

ChartTitle: Lake St. Clair

Main Panel 1257 LAKE SAINT CLAIR - -. Page/Side: -

NOS

LAST EDITION No new editions of chart 14850 will be published. It will be canceled on 05-Jul-23. Comparable or larger scale Electronic Navigational Chart (ENC) coverage is available. See "Cancellation of NOAA Paper and Raster Nautical Charts" in Section I of this LNM for details. A list of all canceled NOAA charts is at <https://www.charts.noaa.gov/MCD/Dole.shtml>. --

14852 48th Ed. 01-OCT-18 Last LNM: 33/18 NAD 83 24/23

ChartTitle: St. Clair River;Head of St. Clair River

Main Panel 1260 SAINT CLAIR RIVER MICHIGAN - -. Page/Side: -

NOS

LAST EDITION No new editions of chart 14852 will be published. It will be canceled on 05-Jul-23. Comparable or larger scale Electronic Navigational Chart (ENC) coverage is available. See "Cancellation of NOAA Paper and Raster Nautical Charts" in Section I of this LNM for details. A list of all canceled NOAA charts is at <https://www.charts.noaa.gov/MCD/Dole.shtml>. --

14853 19th Ed. 01-OCT-18 Last LNM: 44/21 NAD 83 24/23

ChartTitle: SMALL-CRAFT BOOK CHART - Detroit River, Lake St. Clair and St. Clair River (book of 47 charts)

Main Panel 1263 DETROIT RIVER - -. Page/Side: -

	LAST EDITION	No new editions of chart 14853 will be published. It will be canceled on 04-Oct-23. Comparable or larger scale Electronic Navigational Chart (ENC) coverage is available. See "Cancellation of NOAA Paper and Raster Nautical Charts" in Section I of this LNM for details. A list of all canceled NOAA charts is at https://www.charts.noaa.gov/MCD/Dole.shtml .		NOS --	--
14860	37th Ed.	01-MAY-16	Last LNM: 19/22	NAD 83	24/23
	<i>ChartTitle: Lake Huron</i>				
	Main Panel 1312 LAKE HURON. Page/Side: A				
	RELOCATE	Saginaw River Buoy 12		CGD09 from 43-37-13.000N to 43-37-09.767N	083-50-32.000W 083-50-35.304W
14862	29th Ed.	01-MAY-16	Last LNM: 28/17	NAD 83	24/23
	<i>ChartTitle: Port Huron to Pte aux Barques;Port Sanilac;Harbor Beach</i>				
	Main Panel 1313 PORT HURON TO POINT AUX BARQUES MICHIGAN. Page/Side: A				
	LAST EDITION	No new editions of chart 14862 will be published. It will be canceled on 05-Jul-23. Comparable or larger scale Electronic Navigational Chart (ENC) coverage is available. See "Cancellation of NOAA Paper and Raster Nautical Charts" in Section I of this LNM for details. A list of all canceled NOAA charts is at https://www.charts.noaa.gov/MCD/Dole.shtml .		NOS --	--
14863	33rd Ed.	01-FEB-20	Last LNM: 47/16	NAD 83	24/23
	<i>ChartTitle: Saginaw Bay;Port Austin Harbor;Caseville Harbor;Entrance to Au Sable River;Sebewaing Harbor;Tawas Harbor</i>				
	Main Panel 1316 SAGINAW BAY MICHIGAN - -. Page/Side: -				
	LAST EDITION	No new editions of chart 14863 will be published. It will be canceled on 05-Jul-23. Comparable or larger scale Electronic Navigational Chart (ENC) coverage is available. See "Cancellation of NOAA Paper and Raster Nautical Charts" in Section I of this LNM for details. A list of all canceled NOAA charts is at https://www.charts.noaa.gov/MCD/Dole.shtml .		NOS --	--
14865	17th Ed.	01-FEB-14	Last LNM: 03/16	NAD 83	24/23
	<i>ChartTitle: South End of Lake Huron</i>				
	Main Panel 1326 SOUTH END OF LAKE HURON & HEAD OF ST CLAIR RIVER. Page/Side: N/A				
	LAST EDITION	No new editions of chart 14865 will be published. It will be canceled on 05-Jul-23. Comparable or larger scale Electronic Navigational Chart (ENC) coverage is available. See "Cancellation of NOAA Paper and Raster Nautical Charts" in Section I of this LNM for details. A list of all canceled NOAA charts is at https://www.charts.noaa.gov/MCD/Dole.shtml .		NOS --	--
14880	34th Ed.	01-OCT-19	Last LNM: 19/22	NAD 83	24/23
	<i>ChartTitle: Straits of Mackinac</i>				
	Main Panel 1333 STRAITS OF MACKINAC - -. Page/Side: -				
	LAST EDITION	No new editions of chart 14880 will be published. It will be canceled on 05-Jul-23. Comparable or larger scale Electronic Navigational Chart (ENC) coverage is available. See "Cancellation of NOAA Paper and Raster Nautical Charts" in Section I of this LNM for details. A list of all canceled NOAA charts is at https://www.charts.noaa.gov/MCD/Dole.shtml .		NOS --	--
14901	18th Ed.	01-AUG-20	Last LNM: 19/22	NAD 83	24/23
	<i>ChartTitle: Lake Michigan (Mercator Projection)</i>				
	Main Panel 1361 LAKE MICHIGAN - -. Page/Side: -				
	ADD	UCSD CDIP - 269 Weather Wave Buoy 1 Yellow FI Y 5s		CGD09 at 44-03-18.000N	087-03-00.000W
14903	26th Ed.	01-AUG-20	Last LNM: 30/20	NAD 83	24/23
	<i>ChartTitle: Algoma to Sheboygan;Kewaunee;Two Rivers</i>				
	Main Panel 1363 LAKE MICHIGAN-ALGOMA TO SHEBOYGAN - -. Page/Side: -				
	LAST EDITION	No new editions of chart 14903 will be published. It will be canceled on 04-Oct-23. Comparable or larger scale Electronic Navigational Chart (ENC) coverage is available. See "Cancellation of NOAA Paper and Raster Nautical Charts" in Section I of this LNM for details. A list of all canceled NOAA charts is at https://www.charts.noaa.gov/MCD/Dole.shtml .		NOS --	--

14904	28th Ed.	01-MAY-19	Last LNM: 46/21	NAD 83	24/23
<i>ChartTitle: Port Washington to Waukegan;Kenosha;North Point Marina;Port Washington;Waukegan</i>					
Main Panel 1366 PORT WASHINGTON TO WAUKEGAN - -. Page/Side: -					
				NOS	
LAST EDITION	No new editions of chart 14904 will be published. It will be canceled on 04-Oct-23. Comparable or larger scale Electronic Navigational Chart (ENC) coverage is available. See "Cancellation of NOAA Paper and Raster Nautical Charts" in Section I of this LNM for details. A list of all canceled NOAA charts is at https://www.charts.noaa.gov/MCD/Dole.shtml .				--
14905	34th Ed.	01-AUG-20	Last LNM: 46/21	NAD 83	24/23
<i>ChartTitle: Waukegan to South Haven;Michigan City;Burns International Harbor;New Buffalo</i>					
Main Panel 1371 LK MICH WAUKEGAN ILL-SOUTH HAVEN MICH - -. Page/Side: -					
				NOS	
LAST EDITION	No new editions of chart 14905 will be published. It will be canceled on 04-Oct-23. Comparable or larger scale Electronic Navigational Chart (ENC) coverage is available. See "Cancellation of NOAA Paper and Raster Nautical Charts" in Section I of this LNM for details. A list of all canceled NOAA charts is at https://www.charts.noaa.gov/MCD/Dole.shtml .				--
14906	25th Ed.	01-SEP-13	Last LNM: 28/16	NAD 83	24/23
<i>ChartTitle: South Haven to Stony Lake;South Haven;Port Sheldon;Saugatuck Harbor</i>					
Main Panel 1375 LAKE MICHIGAN SOUTH HAVEN TO STONY LAKE. Page/Side: N/A					
				NOS	
LAST EDITION	No new editions of chart 14906 will be published. It will be canceled on 04-Oct-23. Comparable or larger scale Electronic Navigational Chart (ENC) coverage is available. See "Cancellation of NOAA Paper and Raster Nautical Charts" in Section I of this LNM for details. A list of all canceled NOAA charts is at https://www.charts.noaa.gov/MCD/Dole.shtml .				--
14975	37th Ed.	01-SEP-20	Last LNM: 39/21	NAD 83	24/23
<i>ChartTitle: Duluth-Superior Harbor;Upper St. Louis River</i>					
Main Panel 1538 DULUTH-SUPERIOR HARBOR - -. Page/Side: -					
				CGD09	
ADD	Duluth Harbor Basin Traffic V-AIS Duluth Harbor Basin Traffic V-AIS Chart No. 1: S18.2 with one topmark			at 46-46-29.602N	092-05-59.403W

SECTION V - ADVANCE NOTICES

This section contains advance notice of approved projects, changes to aids to navigation, or upcoming temporary changes such as dredging, etc. Mariners are advised to use caution while transiting these areas.

SUMMARY OF ADVANCED APPROVED PROJECTS

<u>Approved Project(s)</u>	<u>Project Date</u>	<u>Ref. LNM</u>
None		
<u>Advance Notice(s)</u>		

ST. MARYS RIVER – Lake Nicolet – Chart 14883

The Coast Guard will be modifying the operation of Frechette Point Range Front Light (LLNR 14015) and Frechette Point Light 91 (LLNR 14010) from two independent lighting signals on the same structure, into one collocated omnidirectional lantern. The reconfigured lantern will serve as the lighting signal for both the front range light and lateral channel marker. The aid will be renamed "Frechette Point Range Front Light 91". The intensity and QG characteristic of the reconfigured lantern will remain the same as the current front range light. The current daymark characteristics will remain the same.

LNM: 10/23

SECTION VI - PROPOSED CHANGES

Periodically, the Coast Guard evaluates its system of aids to navigation to determine whether the conditions for which the aids to navigation were established have changed. When changes occur, the feasibility of improving, relocating, replacing, or discontinuing aids are considered. This section contains notice(s) of non-approved, proposed projects open for comment. SPECIAL NOTE: Mariners are requested to respond in writing to the District office unless otherwise noted (see banner page for address).

PROPOSED WATERWAY PROJECTS OPEN FOR PUBLIC COMMENT

<u>Proposed Project(s)</u>	<u>Closing</u>	<u>Docket No.</u>	<u>Ref. LNM</u>
None			

Proposed Change Notice(s)

LAKE MICHIGAN -Kewaunee - Chart 14903

The Coast Guard is considering changing the operation of the sound signal on Kewaunee Shoal Light (LLNR 20965) from seasonally operating continuously April 1st to November 1st, to a Mariner Radio Activated Sound Signal (MRASS) year-round. The sound signal would be activated by keying the microphone five or more times on VHF FM channel 83A / 157.175MHz.

LNM: 16/23

LAKE MICHIGAN - Green Bay - Chart 14910

The Coast Guard is considering changing the operation of the sound signal on Peshtigo Reef Light (LLNR 21990) from seasonally operating continuously May 1st to October 20th, to a Mariner Radio Activated Sound Signal (MRASS) year-round. The sound signal would be activated by keying the microphone five or more times on VHF FM channel 83A / 157.175MHz.

LNM: 16/23

LAKE MICHIGAN – Waugoshance Point – Chart 14911

The Coast Guard is considering changing the operation of Garden Island Shoal Lighted Bell Buoy 1 (LLNR 21540) by eliminating the seasonal winter mark. The seasonal winter mark is routinely unreliable due to ice conditions and is often found off station or sunk during spring servicing.

LNM: 23/23

LAKE MICHIGAN – Waugoshance Point – Chart 14911

The Coast Guard is considering changing the operation of Ojibwa Island Shoal Buoy 1 (LLNR 21565) from permanent to seasonally relieved. The buoy is routinely unreliable due to ice conditions and is often found off station or sunk during spring servicing. The change would upgrade the seasonal buoy to a radar reflective can and significantly increase its radar detection range when on station.

LNM: 23/23

For any comments or questions on these proposed changes please contact:

The Ninth District Aids to Navigation manager at Brian.D.Hawkins2@uscg.mil or call (216) 902-6070.

LNM: 30/13

SECTION VII - GENERAL

This section contains information of general concern to the Mariners. Mariners are advised to use caution while transiting these areas.

Waterways Analysis and Management System

The Ninth Coast Guard District will be reviewing the following waterways beginning in 2022. The study focuses primarily on aids to navigation in the waterway. Public comments are an important tool in this process so that we can provide the adequate markings and the right mix of signals to a waterway for safe navigation. Comments on the below listed waterways can be sent to Brian.D.Hawkins2@uscg.mil or by calling (216) 902-6070. You may also complete the survey attached to the Local Notice to Mariner and either email it or mail it to: Commander (dpw), Ninth Coast Guard District, 1240 East Ninth St., Cleveland, Ohio 44199.

Sackets Harbor
(LLNR 1755-2024.9)
Buffalo Harbor/Black Rock Canal
(LLNR 2665-3360)
Dunkirk Harbor
(LLNR 3365-3492)
Erie Harbor
(LLNR 3495-3696)
Conneaut Harbor
(LLNR 3700-3735)
Ashtabula Harbor
(LLNR 3740-3830)
Fairport Harbor
(LLNR 3835-3955)
Cleveland Harbor
(LLNR 3975-4260)
Huron Harbor
(LLNR 4430-5455)
Erie Islands
(LLNR 5520-6025)
Detroit River / East Outer Channel
(LLNR 6885-8270)
St. Clair Rec/Belle Isle Channel
(LLNR 8280-8396)
Lake St. Clair
(LLNR 8665-9300)
Anchor Bay
(LLNR 9305-9565)
Toledo / Maumee Channel
(LLNR 6030-6455)
Monroe Harbor
(LLNR 6460-6680)
St. Clair River / Huron Cut
(LLNR 9570-10090)
St. Mary's River

Waterways Analysis and Management System

(LLNR 12765-13755)
Lake Nicolet / Bayfield Channel
(LLNR 13955-14192)
Keweenaw Waterway
(LLNR 14725-15250)
Knife River / Two Harbors
(LLNR 16495-16580)
M.I.R.
(LLNR 11780-12170)
Marquette Harbor
(LLNR 14620-14720)
Apostle Islands
(LLNR 15255-15590)

LNM: 09/20

GREAT LAKES - Marine Events

Marine events such as races, parades, regattas, and fireworks displays are frequently held in the Great Lakes region. Advance information on specific events is contained in enclosure (2) of this publication. The public is reminded to listen to the local broadcast notice to mariners for the most up-to-date information on a marine event. Mariners are advised that some events may require temporary aids to navigation that are not displayed on a chart or in the Light List, and that they should exercise additional caution while operating in the vicinity of a scheduled marine event.

LNM: 24/13

LAKE ONTARIO – Niagara River – Chart 14810

The Coast Guard has received a report of a large tree fixed to Lighted Buoy 43 (LLNR 3245), sticking 2ft-3ft out of the water in the vicinity of Gratiwick Waterfront Park in position 42-03.372N 087-55.307W. All mariners are requested to transit the area with caution.

LNM: 19/23

ONEIDA LAKE - Billington Bay – Chart 14786

The Coast Guard has received a report of an adrift orange buoy floating sideways in the vicinity of Damon Point in Billington Bay, Oneida Lake. All mariners are requested to transit the area with caution.

LNM: 17/23

LAKE ONTARIO – Oswego Harbor – Chart 14813

From 16 July 2023 to 18 September 2023 Dean Marine and Excavating Inc will be conducting dredging operations in the Oswego Harbor. Hours of operation are 0700-1900 7 days a week. Abdrew J, Megan J and Paige Noel can be contacted on VHF channels 7, 9 and 16. All mariners are requested to transit the area with caution.

LNM: 12/23

LAKE ONTARIO – Oswego Harbor – Chart 14800

From 30 June 2023 to 31 October 2023 Dean Marine and Excavating, INC will be conducting construction and breakwall repair in the Oswego Harbor. Hours of operation are from 0630 to 1900 7 days a week. ST-911 Enduring Freedom can be contacted on VHF channel 16. All mariners are requested to transit the area with caution.

LNM: 22/23

LAKE ONTARIO – Little Sodus Bay – Chart 14800

From 16 July 2023 to 18 Sep 2023 Dean Marine and Excavating INC will be dredging in the Little Sodus Bay Harbor. Hours of operation are from 0630 to 1930 Sunday to Monday. Megan J can be contacted on VHF channels 79 and 16. All mariners are requested to transit the area with caution.

LNM: 22/23

LAKE ONTARIO – Little Sodus Bay – Chart 14800

There is an uncharted breakwall along the shore extending from the west side of Little Sodus Bay entrance to the boat ramp of West Barrier Bar County Park. The breakwall is unmarked and unlit. Visibility of the breakwall may be impacted due to high water. All mariners are requested to transit the area with caution.

LNM: 19/23

LAKE ERIE - Buffalo River – Chart 14833

From 30 May 2023 to 30 September 2023 BIDCO Marine Group Inc will be conducting diving and pile driving operations in the Buffalo River in positions 42° 52' 25.536" N 78° 52' 37.8372" W and 42° 52' 19.272" N 78° 52' 23.2932" W. Hours of operations are from 0700 to 1530 Monday through Friday. Spud barges on scene can be contacted on VHF channel 16. All mariners are requested to transit the area with caution.

LNM: 22/23

LAKE ERIE - Buffalo River – Chart 14833

From 19 June 2023 to 06 July 2023 BIDCO Marine Group Inc will be conducting geotechnical drilling operations in the Buffalo Harbor, South Pier of the Buffalo River near US Coast Guard station/ China Lighthouse in position 42° 52' 40.1988" N Longitude: 78° 53' 22.2468" W. Hours of operations are from 0700 to 1530 Monday through Friday. Spud barges on scene can be contacted on VHF channel 16. All mariners are requested to transit the area with caution.

LNM: 23/23

LAKE ERIE - Buffalo – Chart 14838

LAKE ERIE - Buffalo – Chart 14838

From 1 July 2023 to 15 December 2023 Ryba Marine Construction will be conducting repairs to the Buffalo north breakwater. Hours of operation are 24 hours a day 7 days a week. Tug Thomas R. Morrish can be contacted on VHF channels 13 and 16. All mariners are requested to transit the area with caution.

LNM: 22/23

LAKE ERIE – OH - Ashtabula Harbor – Chart 14836

A submerged breakwater is being constructed in Ashtabula Harbor, to be connected to the existing East Breakwater. The submerged breakwater will be connected to the East Breakwater at the first angle point of the East Breakwater, as entering the harbor, from the lake. All elevations referenced are referred to Low Water Datum (LWD), IGLD 1985.

The center line of the submerged breakwater approximately follows the same azimuth as the first segment of the East Breakwater, in a south easterly direction, for approximately 1000', then slightly bends to the east for another two segments, for approximately 500'.

The first 1000' (Area "A") has a crest design height of -2.0' with a crest width of 9', and a footprint of approximately 150', with the next 100' transitioning to the dimensions in the next item.

The final 400 (Area "B") has a crest height of -5.0', with a crest width of 9', and a footprint of approximately 50'. The coordinates, in decimal degrees, are as follows:

1. 41.918447801N 80.790362308W
2. 41.916367139N 80.788014301W
3. 41.916189406N 80.787730327W
4. 41.916026216N 80.787424318W
5. 41.915640784N 80.786454826W
6. 41.916242815N 80.783904852W

All mariners are requested to transit the area with caution.

LNM: 17/23

LAKE ERIE – Fairport Harbor – Chart 14829

The Army Corp of Engineers will be deploying new research buoys in the vicinity of Fairport Harbor in positions.

- A 41-710366N 81-383600W
- B 41-760039N 81-280720W
- C 41-764492N 81-247534W
- D 41-772914N 81-239151W
- E 41-780165N 81-242502W
- F 41-770848N 81-227184W
- G 41-775474N 81-212654W
- H 41-780889N 81-198304W
- I 41-800360N 81-154247W

All mariners are requested to transit the area with caution.

LNM: 17/23

LAKE ERIE – Fairport – Chart 14829

From 1 June 2023 to 16 June 2023 Ryba Marine Construction will be dredging in the Fairport Harbor. Hours of operation are 24 hours a day 7 days a week. Tug Thomas R. Morrish can be contacted on VHF channels 13 and 16. All mariners are requested to transit the area with caution.

LNM: 22/23

Lake Erie – NY - Barcelona Harbor – Chart 14823

Due to significant shoaling in the Barcelona Harbor Main Entrance, vessels are no longer able to transit the channel. All mariners are requested to transit the area with caution. The following Aids to Navigation have been temporary discontinued until dredging operations are complete.

- Barcelona Harbor East Breakwater Light (LLNR 3480)
- Barcelona Harbor West Breakwater Light (LLNR 3485)

LNM: 23/22

LAKE ERIE – OH – Cleveland Harbor – Chart 14839

From 15 April 2023 to 14 July 2023 Dean Marine and Excavating Inc will be conducting breakwater repairs in the Cleveland Harbor West Basin / Cuyahoga River. Hours of operation are from 0700 to 1900 7 days a week. Madison R, ST911 and Paige Noel can be contacted on VHF 16. Request a 2-hour notice of arrival for commercial traffic. Work will be on the West Cleveland Harbor Breakwater and traversing through the harbor's west basin, dock 20 to and from West Breakwater. All mariners are requested to transit the area with caution.

LNM: 11/23

LAKE ERIE – OH – Cleveland Harbor – Chart 14839

From 24 April 2023 to 16 June 2023 Ryba Marine Co will be dredging in the vicinity of Cleveland Harbor. Hours of operation are 24 hours a day 7 days a week. Tug Kathy Lynn can be contacted on VHF channels 13 and 16. All mariners are requested to transit the area with caution.

LNM: 15/23

LAKE ERIE – Cuyahoga River – Chart 14829

The Coast Guard has received a report of a fixed 5' wide section of steel bulkhead protruding into the Cuyahoga River in approximate position 41 29' 34"N, 081 41' 31"W. All mariners are requested to transit the area with caution.

LAKE ERIE – Cuyahoga River – Chart 14829

LNM: 19/23

DETROIT RIVER– Detroit – Chart 14854

From 1 April 2023 to 1 November 2023 J.F. Brennan Co Inc will be installing turbidity curtain enclosures and material placement/capping in the Detroit River. Approximate upstream location of 42° 19' 16.76" N, 083° 03' 29.93" W. Approximate downstream location of 42° 19' 10.28" N, 083° 03' 54.59" W up to 225 feet off the shoreline. Hours of operation are from 0600-1800 7 days a week. M/V Shawondasse can be contacted on VHF channel 13. Work area inclosed with turbidity curtain anchored with 4" steel posts every 25 feet. All Marine work will be within this enclosure after mobilization of equipment. All mariners are requested to transit the area with caution.

LNM: 11/23

ST. CLAIR RIVER –Lake ST. Clair – Chart 14853

From 17 April 2023 to 15 June 2023 Great Lakes Dock and Materials will be conducting dredging in the Lake St. Clair channel. Hours of operation are 24 hours a day 7 days a week. Barges Hannah Avery, Jacquelyn and Tugs Fisher Hayden, Duluth can be contacted on VHF channels 16 and 18. All mariners are requested to transit the area with caution.

LNM: 16/23

LAKE HURON – Grand Island – Chart 14860

On June 8, 2023 a wave monitoring buoy has been deployed 25 nautical miles north of Grand Island. in position 46° 58' 21.720" N, 86° 34' 5.520" W. Depth 160 meters.

The duration is as follows: Station instrumented seasonally May to October This buoy is to be maintained for USACE as part of the Coastal Data Information Program (CDIP). The wave buoy is a 3 foot diameter sphere with an attached telemetry whip antenna and a night time yellow color warning flashing light. The light timing sequence is a series of 5 flashes at 1-second intervals with a period of 20 seconds between each series. The buoy is painted yellow and marked "Wave Buoy" with the phone number 858- 534-3032.

LNM: 24/23

STRAITS OF MACKINAC – Point LaBarbe to McGulpin Point – Chart 14881

From 01 May 2023 to 31 May 2023 Kokosing Industrial Inc will be conducting ROV inspection of the new American Transmission Company 138kv submarine power cables installed in 2021 in the Straits of Mackinaw between Point LaBarbe, Mackinaw County and McGulpin Point, Emmet County. Hours of operation are 24 hours a day 7 days a week. Tugs Valerie B, Nancy Anne, Champion and Timmy V can be contacted on VHF channels 13 and 16. All vessels are requested to remain 1500' away from the survey vessels. All mariners are requested to transit the area with caution.

LNM: 11/23

ST MARYS RIVER- Saint Mary's SOO Locks – Chart 14887

Kokosing-Alberici LLC will commence construction on the New Soo Lock Upstream Approach Walls April of 2021. Construction activities will be generally limited to the upstream north channel approach to the decommissioned Sabin and Davis Locks. Delivery by barge and boat of materials, equipment and crew will cross the upstream approach to the Soo Locks navigation channel throughout construction. Operations will commence from 25 Mar 21 to 15 Oct 23 Monday through Saturday 24 hours a day.

LNM: 09/21

ST MARYS RIVER – Sault Ste. Marie – Chart 14883

From 24 April 2023 to 30 September 2023 Roen Salvage Company will be conducting steel sheet pile construction at the Carbide Dock. Hours of operation are 0500-1900 7 days a week. Tug Stephen Asher can be contacted on VHF channels 7 and 16. All mariners are requested to transit the area with caution.

LNM: 12/23

LAKE MICHIGAN – Illinois River - Chart 14901

Shoaling has been reported between Jenkins Landing (MM 205) and Depue Lake (MM 210) on the Illinois River and at La Salle (MM 233) along the right descending bank. Dredging is scheduled to be after January 1, 2023. All mariners are urged to use caution when transiting the area. For further details, contact Sector Lake Michigan Command Center at (414) 747-7182.

LNM: 49/22

LAKE MICHIGAN – Waukegan – Chart 14904

From 15 May 2023 to 31 Oct 2023 Michels Construction will be performing Break Wall construction between North Point Marina and Waukegan harbor, along the shores of Illinois State Beach Park. Operations will be 24 hours a day, 7 days a week. Consisting of material barges, spud barges, and tugboats. There will be 2 anchor buoys roughly 3,000 ft offshore that will be lighted. Barges will be tied up on these anchors at all times. The First location of the anchors will be as follows: Anchor 1 - 42.28°39.59'N 87.47°25.59'W Anchor 2 – 42.28°18.39'N 87.47°21.26'W. These will be on this location from 5.15.23 to 10.1.23. They will then be moved south to new locations that will be updated. Lighted Danger buoys will be placed along the work area where construction is taking place. Tug Ruth Lucille, Leona B, and Kimberly will be available on VHF channel 16.

LNM: 24/23

LAKE MICHIGAN – New Buffalo Harbor - Chart 14905

Shoaling has been reported near the middle of the channel immediately inside the break wall in New Buffalo Harbor, MI. The actual water depth is currently significantly below the charted depth. Mariners are urged to use caution when transiting the area. For further details, contact Sector Lake Michigan at (414) 747-7182 or VHF channel 16.

LNM: 15/22

LAKE MICHIGAN – Port Sheldon – Chart 14932

Shoaling has been reported near Pigeon Lake at the Port Sheldon entrance. The actual water depth is currently significantly below the charted depth. Mariners are urged to use caution when transiting the area. For further details, contact Sector Lake Michigan at (414) 747-7182 or VHF channel 16.

LAKE MICHIGAN – Port Sheldon – Chart 14932

LNM: 15/23

LAKE MICHIGAN – Muskegon Channel – Chart 14906

The Coast Guard has received reports that the depths at the entrance to Muskegon Lake are less than the charted depths. All mariners are requested to transit the area with caution.

LNM: 17/23

LAKE MICHIGAN – South Haven – Chart 14906

From 4 June 2023 to 1 July 2023 The King Company INC will be conducting hydraulic dredging in the South Haven outer and inner channel. Hours of operation are 24 hours a day 7 days a week. Buxton II can be contacted on VHF channels 16, 18 and 73. Submerged pipe laying on the lake floor marked by orange round buoys every 500 feet. (2) white buoys will be seen North and South of the dredge. The white buoys indicate winch anchor locations. Disposal area starts south of the channel at the pier and runs for an additional 1,900'. Main contact will be the Superintendent Joseph Martin. Cell# listed below. During rough seas our pipe pontoon will be floating outside of the channel. It is bright yellow, 25'x8'x6' and has (2) flashing lights on each end that come on at night. All mariners are requested to transit the area with caution.

LNM: 22/23

LAKE MICHIGAN – Whiting – Chart 14928

From 10 April 2023 to 15 June 2023 Great Lakes Dock and Material will be conducting breakwater repair work at Whiting Lakefront Park. Hours of operation are 24 hours a day 7 days a week. Barge Justin Avery, Tug Defiance and Tug George F. Bailey can be contacted on VHF channels 16 and 18. All mariners are requested to transit the area with caution.

LNM: 15/23

LAKE MICHIGAN – Whihala Beach – Chart 14927

Whoazone has established a waterborne obstacle course at the Whihala Beach that will be in operation from 11 June 2023 to 26 August 2023. It is requested that all traffic remain outside the designated area and transit the area with caution. Contact Sector Lake Michigan at (414) 747-7182 or Whoazone general manager at (219)234-2615.

LNM: 17/23

LAKE MICHIGAN – Whiting – Chart 14927

From 20 April 2023 to 15 June 2023 Great lakes Dock and Material will establish a temporary anchor ball for material barges in position 41 41 15.9273 N, 087 28 57.7887 W. Barge Justin Avery, Tug Defiance and Tug George F. Bailey can be contacted on VHF channels 16 and 18. All mariners are requested to transit the area with caution.

LNM: 17/23

LAKE MICHIGAN – Sheboygan River – Chart 14922

Shoaling has been reported in entrance of the Sheboygan River in the vicinity of 43-44.928N, 087-42.170W AND 43-44.936N, 087-42.110W. The actual water depth is currently significantly below the charted depth. Mariners are urged to use caution when transiting the area. For further details, contact Sector Lake Michigan at (414) 747-7182 or VHF channel 16.

LNM: 24/22

LAKE MICHIGAN – Sheboygan - Chart 14903

From 5 May 2023 to 1 December 2023 Kokkosing Industrial Inc will be conducting pipeline installation and dredging in Sheboygan WI. Hours of operations are from 0700 to 1900 with a possibility of 24 hour operations 7 days a week. Tug Nancy Anne can be contacted on VHF channels 13 and 16. Kokosing IV barge will be working on spuds with accompanying Tug Nancy Anne. Operations will be approximately 1.25 miles north of Sheboygan river entrance. Diving operations are present, nearby vessels maintain 500 foot CPA, minimum. Pleasure craft and passing vessels should remain a safe distance from the work at all times. Additional barges will be moored on anchor buoys inside the Sheboygan river breakwalls. All mariners are requested to transit the area with caution.

LNM: 18/23

LAKE MICHIGAN – Green Bay – Chart 14902

From 12 May 2023 to 31 May 2023 Roen Salvage Company will be conducting FMM Ship Lift Construction in the Menominee River adjacent to Marinette Marine Shipyard. Hours of operation are from 0600 to 1800 7 days a week. Tug Charles Asher can be contacted on VHF channels 7 and 16. All mariners are requested to transit the area with caution.

LNM: 19/23

LAKE MICHIGAN – Rawley Point – Chart 14902

On June 1, 2023 a wave monitoring buoy has been deployed 22 nautical miles ESE off Rawley Pt. in position 44° 03' 18.000" N, 87° 03' 0.000" W. Depth 145 meters.

The duration is as follows: Station instrumented seasonally May to October

This buoy is to be maintained for USACE as part of the Coastal Data Information Program (CDIP). The wave buoy is a 3 foot diameter sphere with an attached telemetry whip antenna and a night time yellow color warning flashing light. The light timing sequence is a series of 5 flashes at 1-second intervals with a period of 20 seconds between each series. The buoy is painted yellow and marked "Wave Buoy" with the phone number 858- 534-3032.

LNM: 23/23

LAKE MICHIGAN - Milwaukee - Chart 14924

J.F. Brennan company will be conducting construction operations on the south end of the confluence of the Milwaukee and Menomonee rivers. This work will take place daily from 7:00 am to 7:00 pm from March 27 to August 31, 2023. A turbidity barrier, small craft, and barges will be used throughout the project. this area will remain open to vessel traffic. please transit the area with caution. the project superintendent can be contacted at 920-205-7149 with any questions. All mariners are requested to transit the area with caution.

LNM: 13/23

LAKE MICHIGAN – St. Joseph – Chart 14930

From 1 July 2023 to 31 Aug 2023 Great Lakes Dock and Materials will be performing maintenance dredging in the inner harbor of St. Joseph. Hours of operations are 24 hours a day 7 days a week. Dredge Justin Avery, Tug George F. Bailey and Tug Defiance can be contacted on VHF channels 16 and 18. All mariners are requested to transit the area with caution.

LNM: 12/23

LAKE MICHIGAN –St. Joseph River – Chart 14930

Shoaling has been reported near the entrance channel of the St. Joseph River approximately 500 ft west of the North Pierhead Light (LLNR 19515). The actual water depth may be several feet less than the charted depth. Mariners are urged to use caution when transiting the area. For further details, contact Sector Lake Michigan at (414)747-7182 or VHF channel 16.

LNM: 43/22

LAKE MICHIGAN – Ludington – Chart 14901

From 01 March 2023 to 01 October 2023 Under Water Construction will be conducting dive operations at the Ludington pump storage power plant. All mariners are requested to transit the area with caution. Contact Under Water Construction at (269)921-2390.

LNM: 17/23

LAKE MICHIGAN – Grand Haven – Chart 14933

From 17 May 2023 to 16 June 2023 the King Company, Inc will be conducting hydraulic dredging in the Grand Haven Outer Channel. Hours of operation are 24 hours a day 7 days a week. Dredge Barry J can be contacted on VHF channels 16, 18, and 73. Dredging Grand Haven's Outer channel. Submerged pipe laying on the lake floor marked by orange round buoys every 500 feet. (2) white buoys will be seen North and South of the dredge. The white buoys indicate winch anchor locations. Disposal area starts North of the pier 7,000' and runs for an additional 3,000'. Main contact will be the Superintendent Robert Lister. Cell# listed below. During rough seas our pipe pontoon will be floating outside of the channel. It is bright yellow, 25'x8'x6' and has (2) flashing lights on each end that come on at night.

LNM: 20/23

LAKE MICHIGAN – Chicago – Chart 14928

From 16 April 2023 to 01 September 2023 Roen Salvage Company will be conducting breakwater repair in Chicago Harbor. Hours of operation are 24 hours a day 7 days a week. Tug David Schanock can be contacted on VHF channels 7 and 16. All mariners are requested to transit the area with caution.

LNM: 12/23

LAKE MICHIGAN – Chicago – Chart 14928

The Coast Guard will establish a safety zone on Lake Michigan in the vicinity of the Chicago Harbor in Chicago, IL. The safety zone will be enforced from 12 noon through 7:30 p.m. each day of the event and will encompass all navigable waters of Lake Michigan and the Chicago Harbor bounded by a line drawn from the east side of the Jardine Water Filtration Plant at 41°53.700' N, 87°36.140' W, then northeast to 41°54.000' N, 87°34.100' W, then south to 41°52.000' N, 87°34.100' W, then west to 41°52.000' N, 87°36.220' W, then northwest to 41°52.450' N, 87°36.520' W, then north to 41°53.160' N, 87°36.520' W, then northeast to 41°53.240' N, 87°36.375' W, then east to 41°53.240' N, 87°36.070' W, then north to 41°53.470' N, 87°36.070' W, then east to 41°53.470' N, 87°35.910' W, then north to 41°53.545' N, 87°35.910' W, then west to 41°53.545' N, 87°36.140' W, then north back to the point of origin. A 300-foot traffic lane will allow vessel movement between the Chicago River, Monroe Harbor, and Lake Michigan. Entry into, transiting, or anchoring within the safety zone is prohibited unless authorized by the Captain of the Port Lake Michigan or a designated representative. MSU Chicago Waterways Management Division at 630-986-2155 or Sector Lake Michigan Command Center at 414-747-7182.

LNM: 24/23

LAKE SUPERIOR – Little Lake Harbor – Chart 14961

Shoaling has been reported in the entrance of Little Lake Harbor exceeding 5 feet above low water datum near the channel edges. Some cross sections of the channel are shoaled nearly the full width to 2 feet or more above low datum. The harbor should not be considered as a functional harbor or refuge. All mariners are requested to transit the area with caution.

LNM: 47/22

LAKE SUPERIOR – Bayfield and La Pointe – Chart 14961

From 5 June 2023 to 17 June 2023 J.F. Brennan Company will be conducting drill sampling. Hours of operation are from 0700 to 1900 Monday to Saturday. MV Bulldog can be contacted on VHF channels 13 and 16. All mariners are requested to transit the area with caution.

LNM: 22/23

LAKE SUPERIOR – MN – Spirit Lake – Chart 14975

From July 2022 to November 2023 J.F. Brennan Company, Inc will be conducting Hydraulic Dredging operations are to be conducted in this area, with a sunken dredge pipeline running north from near the Spirit Lake Marina to Hallett Dock #7 along the western shoreline of the St. Louis River. The pipeline will be demarcated with buoys along the entirety of the pipe, approximately every 500 FT. Floating booster pump platforms will be between Hallett Dock #7 and Spirit Lake Marina, with construction signage upstream and downstream of the work zone. The work zone will mainly be between Munger Landing and the island just to the east of the landing. Within the work zone, there will be several pieces of equipment along with floating dredge pipelines.

LNM: 26/22

LAKE SUPERIOR – Tallas Bay

From 31 May 2023 to 02 June 2023 Great lakes Environmental Center will be conducting sampling and analysis of soils and sediments in Tallas Bay, St Louis River area. Hours of operation are from 0700 to 1900 Monday through Thursday. A GLEC 25ft sediment coring pontoon can be contacted on VHF channels 9 and 16. All mariners are requested to transit the area with caution.

LNM: 17/23

SECTION VIII - LIGHT LIST CORRECTIONS

An Asterisk *, indicates the column in which a correction has been made to new information

(1) No.	(2) Name and Location	(3) Position	(4) Characteristic	(5) Height	(6) Range	(7) Structure	(8) Remarks
10805	Saginaw River Buoy 12	43-37-09.767N 083-50-35.304W				Red.	Nun; winter marker. 24/23
15870	Duluth Harbor Basin Traffic V-AIS	46-46-29.602N 092-05-59.403W	Mo (A) W		5		AIS MMSI 993672226 24/23
	*					*	*

ENCLOSURES

(1) LNM Section I - Special Notices

1-Great Lakes Water Levels

LNM: 06/22

(2) LNM Section II - Discrepancies

N/A

LNM: 19/19

(3) LNM Section III - Temporary Changes and Temporary Changes Corrected

N/A

LNM: 19/19

(4) LNM Section IV - Chart Corrections

N/A

LNM: 19/19

(5) LNM Section V - Advance Notices

N/A

LNM: 19/19

(6) LNM Section VI - Proposed Changes

N/A

LNM: 19/19

(7) LNM Section VII - General

1-Marine Events

2-Current Ninth District Bridge Maintenance/Activities

3-Waterway Analysis and Management System Survey

LNM: 19/19

(8) LNM Section VIII - Light List Corrections

N/A

LNM: 19/19

J. P. Hickey, RADM
U. S. Coast Guard
Commander, Ninth Coast Guard District

GREAT LAKES, CONNECTING CHANNELS AND ST. LAWRENCE RIVER WATER LEVELS AND DEPTHS

Expected water levels on the Great Lakes, Connecting Channels and the St. Lawrence River are given in inches above (+,0) or below (-,0) Low-Water Datum (LWD,0). LWD is a plane of reference on a navigation chart, also known as Chart Datum. LWD elevations shown below are given in International Great Lakes Datum, 1985 (IGLD 1985,0).

	Forecast Point	Low Water Datum IGLD 1985	Expected Levels (inches above or below Low Water Datum,0)				
			Current	Week 1	Week 2	Week 3	Week 4
			9-Jun	16-Jun	23-Jun	30-Jun	7-Jul
GREAT LAKES							
Lake Ontario		243.3	43	42	41	41	40
Lake Erie		569.2	43	42	42	42	41
Lake St. Clair		572.3	39	39	39	39	39
Lake Michigan-Huron		577.5	26	26	27	27	28
Lake Superior		601.1	18	18	19	19	19
ST. LAWRENCE RIVER							
Above Long Sault Dam	0	237.9	41	44	41	40	39
Above Iroquois Dam	1	240.3	35	37	34	34	33
Ogdensburg	2	242.4	37	37	35	34	33
Alexandria Bay	2.1	243.0	41	41	40	39	38
Head of river at Cape Vincent	3	243.3	43	42	41	41	40
DETROIT RIVER							
Lake Erie at Pelee Passage	4	569.2	43	42	42	42	41
Mouth of River at Gibraltar	5	569.5	43	43	42	42	41
Fort Wayne	5.1	571.1	44	44	43	43	43
Head of River above Belle Isle	6	572.0	41	41	40	40	40
ST. CLAIR RIVER							
Mouth of River at St. Clair Flats	7	572.3	39	39	39	39	39
Algonac	8	572.8	39	39	39	39	39
St. Clair	9	574.4	36	36	36	36	36
Blue Water Bridge	10	576.2	33	33	33	34	34
Head of River at Fort Gratiot	11	577.2	28	29	29	30	30
Lake Huron Approach Channel	12	577.5	26	26	27	27	28
ST. MARYS RIVER							
Mouth of River at Detour	13	577.5	26	26	27	27	28
West and Middle Neebish	14	577.8	24	25	25	26	26
Head of Little Rapids	15	578.4	25	26	26	27	27
U.S. Slip	16	578.7	25	25	26	27	27
Above Locks	17	600.4	20	20	20	20	21
Head of River at Point Iroquois	18	601.1	18	18	19	19	19

UNDERSTANDING THE FORECAST

Available water depth is determined for a location by adding (if+) or subtracting (if-) the amount from the above table to the appropriate channel depth shown in the profile Connecting Channel Depths Graphic or to water depths shown on National Oceanic and Atmospheric Administration (NOAA) navigational charts.

CAUTION

Depths so determined are representative of a still water surface elevation, disturbed by neither wind nor other causes. Depths, however, may be reduced or increased as much as several feet for short periods due to these disturbances, or when sections of channels develop shoals. Vessel masters should refer to "Local Notice to Mariners" for extent of shoaling and scattered bedrock projections in all channels. Ice conditions can have a dramatic impact on actual channel depth and can lead to large short-term water level fluctuations. Ice information can be found at the National Ice Center's website.

FOR FURTHER INFORMATION CONTACT:	FOR MORE INFORMATION VISIT:	WATER LEVEL INFORMATION SUPPLIED BY:
Detroit District Corps of Engineers	Detroit District Great Lakes Homepage	NOAA, National Ocean Service
477 Michigan Avenue	International Joint Commission	SSMC4, STATION 7523
Detroit MI, 48226	Great Lakes Information Network	1305 East-West Hwy
1-888-694-8318 ex. 1	NOAA Tides and Currents	Silver Spring, MD 20910-3233
email: hghpm@usace.army.mil	U.S. Coast Guard - District 9	(301) 713-2902

GREAT LAKES-MARINE EVENT-SAFETY ZONES-SECURITY ZONES

Events listed below are those events that may have accompanying special local regulations.

<u>Location</u>	<u>Name of Event</u>	<u>Date / Time</u>	<u>POC</u>	<u>Tel #</u>
<u>LAKE ONTARIO</u>				
Rochester, NY	Hospice Regatta Rochester Race	08/19/2023-08/20/2023	0900-1600	Kenny Fourspring 585-902-2183
Rochester, NY	Genesee Yacht Club Saturday Morning Racing	05/27/2023 - 10/07/2023	0900-1400	Kenny Fourspring 585-902-2183
Rochester, NY	Genesee Yacht Club Tuesday Night Racing	05/23/2023 - 09/19/2023	1800-2100	Kenny Fourspring 585-902-2183
Rochester, NY	Thistle Sailboat Frontier Regatta	3-Jun-23	1700-2100	Mary Ellen Brown 703-408-7298
Rochester, NY	Scotch Bonnet Light Race	08/25/2023-08/26/2023	1700-2100	Kenny Fourspring 585-902-2183
<u>LAKE ERIE</u>				
Eastlake, OH	Wastlake Willoughby Offshore Grand Prix	15 & 16 JUL 2023	1200-1700	Kristen Mendeszoo 216-970-0774
Mentor OH	Mentor Harbor Yacht Club Fireworks	3-Jul-23	0915-1045	Christopher Sukala 440 381 1148
Vermilion	2023 Festival of the Fish (Fireworks)	16-Jun-23	0915-2315	Doug Keith Jr. 440-320-6798
Sandusky	Sandusky Sailing Club -Wednesday Evening Race	6/14/2023	1830-2100	Tracy Girard 313-475-7475.
Sandusky	Sandusky Sailing Club - Friday Night Laser Series	6/16/2023	1800-2030	Tracy Girard 313-475-7475.
Sandusky	Sandusky Sailing Club -Sunday Morning Race Series	6/18/2023	0930-1100	Tracy Girard 313-475-7475.
Fairport Harbor, OH	Fairport Harbor Mardi Gras, Fireworks	2-Jul-23	09:45 PM to 10:45 PM	Mr. Chip Davis 330-352-4800
Cleveland, OH	2023 Brogan Open Water Classic	22-Jul-23	7:00 AM-11:00 AM	Mr. Chuck Beatty 330-808-4821
<u>DETROIT RIVER</u>				
<u>LAKE ST. CLAIR/St. Clair River</u>				
Windsor	WYC Wednesday Night Spring Series #5	6/14/2023	1900-2230	Tracy Girard 313-475-7475.
Windsor	WYC Canadian Club Overnight Race	6/16/2023	1900-2230	Tracy Girard 313-475-7475.
Detroit	Grosse Pointe Sail Club Tuesday Night Series #4	6/20/2023	0700-2030	Tracy Girard 313-475-7475.
St. Clair Shores	Lake Shore Sail Club - Spring Sunset Series Race	6/14/2023	1830-2200	Tracy Girard 313-475-7475.
Marysville	Marysville Fun Fest Fireworks	6/18/2023	2200-2230	Tracy Girard 313-475-7475.
Detroit	Bayview Yacht Club - Fathers Day Fleet Review	6/18/2023	1100-1500	Tracy Girard 313-475-7475.
Grosse Ile	Ford Yacht Club - Dacron rum Races #1	6/18/2023	1400-1700	Tracy Girard 313-475-7475.
Grosse Pointe Farms	Sigma Gamma Fireworks	6/20/2023	2200-2230	Tracy Girard 313-475-7475.
<u>LAKE HURON</u>				
Bay City	Bay City Yacht Club Sailboat Racing Wednesday	6/14/2023	1900-2200.	Tracy Girard 313-475-7475.
Bay City	Bay City Yacht Club Sailboat Racing - Tawas Ov	6/16/2023	1900-2359	Tracy Girard 313-475-7475.
Tawas	Tawas Bay Yacht Club Race Series #13	6/17/2023	1100-1600	Tracy Girard 313-475-7475.
Tawas	Tawas Bay Yacht Club Race Series #14	6/18/2023	1100-1600	Tracy Girard 313-475-7475.
<u>LAKE MICHIGAN & Green Bay</u>				
N/A				
<u>LAKE SUPERIOR</u>				
N/A				

2023 GREAT LAKES SINGLEHANDED SOCIETY

45th PORT HURON and 26th CHICAGO TO MACKINAC SOLO CHALLENGES 6th SUPER MAC AND BACK

NOTICE AND CONDITIONS OF RACE

1. MANAGEMENT

1.1 The Great Lakes Singlehanded Society (GLSS) is the Organizing Authority (OA) of the 2022 Port Huron to Mackinac and Chicago to Mackinac Challenges. The Challenges shall be under the management of the Great Lakes Singlehanded Society Race Committee, who shall have full authority in interpreting the rules and conditions for this event, directing the race management, establishing the event, and establishing the Protest Committee for the hearing of protests.

1.2 The Race Committee shall have the right to reject the entry of any skipper or boat for any reason any time prior the start of the Challenge.

1.3 The Challenges will start on **June 24, 2023**.

1.4 The fleets will be divided into divisions or classes according to rating or handicap and other factors at the discretion of the Race Committee.

1.5 Questions can be sent to racechair@solosailors.org

2. RULES

The Challenges shall be governed by:

2.1 The rules as defined by the Racing Rules of Sailing (2022-2024) including US Sailing Prescriptions (RRS) except as modified by the Sailing Instructions.

2.2 This Notice and Conditions of Race.

2.3. The Sailing Instructions and any Amendments

2.4. The Inland Navigation Rules

2.5. U.S. Coast Guard Rules and Regulations.

3. QUALIFICATION OF SKIPPERS

3.1 As used in this Notice and Conditions of Race and the Sailing Instructions, the term "Skipper" shall mean the person designated on the Entry Form as "Skipper" and who is operating the boat regardless of ownership.

3.2 An entrant shall be 18 years of age or older prior to the start of the Challenge and shall have at least 1000 miles of sailing experience on a water body equal to or greater than the magnitude of Lake Huron or Lake Michigan.

3.3 New entrants shall document that they have made at least one nonstop singlehanded passage under sail, on the boat being entered in the Challenge, covering a distance of no less than 100 statute miles, and requiring a passage time of no less than 24 hours. If a different boat is used for the solo qualification passage, a complete description of the type of boat intended to be used in the Challenge, is to be provided to the GLSS Race Director for consideration and approval.

3.4 Entrants other than GLSS members must submit a completed GLSS Sailing Experience Resume Form showing that they meet the qualification requirements listed above.

4. ELIGIBILITY OF YACHTS

4.1 The Challenge is open to single hulled self-righting boats with permanent cruising accommodations, or multihull boats with permanent cruising accommodations. Cruising accommodations shall consist of a marine toilet legal for Great Lake waters, a permanently installed bunk and galley facilities.

4.2 The overall length limits shall be a minimum of 26 feet in length (LOA) and a maximum of 50 feet in length (LOA). Boats exceeding either of these parameters may be considered for acceptance into the Challenge by petition to the GLSS Race Committee.

4.3 The safety of the boat and the Skipper shall be the sole responsibility of the owner or Skipper, who shall insure that the boat is fully sound, thoroughly seaworthy and that the Skipper is physically and mentally prepared for the Challenge.

5. ENTRY PROCEDURES AND FEES

5.1 The Race Committee shall receive the following items prior to the Challenge.

- a. Completed registration on Yachtscoring.com. A link and instructions can be found on the GLSS Mackinac Challenge web page www.solosailors.org/mac
- b. **For Current dues paid GLSS Members** the Entry Fees are as follows:
 - i. Solo Mackinac Challenge entry fee is \$300.00,
 - ii. Super Mac entry fee is \$350.00,
 - iii. Super Mac and Back is \$400.00.
 All are payable in U.S. funds to the GLSS via PayPal and due by **May 21, 2023**.
- c. **New Entrants Solo Mackinac Challenge:** Entry fee of \$350.00 payable in U.S funds to the GLSS due by **May 21, 2023**. Non-GLSS member applications shall not be accepted after **May 21, 2023**.
- d. A late entry fee of \$50.00 in U.S. funds shall be required for any entry received after **May 21, 2023**. Entries for current GLSS members shall be accepted until June 9, 2023. However, ANY entry received after **May 28, 2023** shall have a late entry fee of \$100.00.
- e. A **Waiver and Release** form and the **Required Equipment** list shall be signed and submitted no later than **May 31, 2023**.
- f. **Evidence of Liability Insurance** to cover this event, a copy shall be submitted by **May 31, 2023**. Each boat shall have a minimum of \$500,000.00 Liability Insurance coverage. Insurance shall be valid for the duration of the Challenge.
- f. **Life Raft inspection Certificate.** A valid certificate shall be submitted prior to the Skipper's final registration. A skipper may substitute a survival suit that provides appropriate thermal protection and floatation for the requirement of a life raft provided s/he also carries a Personal Locator Beacon with built in GPS positioning, 406 MHz signal, and 121.5 MHz homing capability, SPOT, or the equivalent.
- g. **Rating Certificates:** For all GLSS events except on Lake Ontario, a copy of the boat's **2023 MWPHRF** or **GLMRA** rating certificate shall be submitted by May 31, 2023 or a penalty may be assessed by the Race Committee.

5.2 All Entry Fees are non-refundable and cannot be applied to other GLSS Challenges

5.3 All required documents shall be submitted prior to final registration via www.yachtscoring.com or by regular mail to the GLSS Race Chair, Elisabeth Reichling, P.O. Box 362, Richland, Michigan 49083-0362

6. REGISTRATION AND SKIPPERS' MEETING

6.1 Mandatory Skipper's Meetings and weather briefing will be held in conjunction with a final registration at the following locations:

- a. The location of the skippers meeting for yachts starting in Port Huron, MI. is The Vintage Tavern, 103 Michigan St, Port Huron, MI 48060.
- b. The location of the skippers meeting for yachts starting in Chicago shall be the Columbia Yacht Club, 111 N. Lakeshore Drive, Chicago, IL 60601.

6.2 Check-in will begin at 1600 (EDT) in Port Huron and 1700 (CDT) hours in Chicago on June 23, 2023 with the Skipper's Meeting commencing at 1800 hours.

6.3 Skippers shall be required to ensure that all required documentation has been provided. The following may be submitted at registration, if not previously provided, **but only with the Challenge Director's permission in advance.**

- a. Current proof of Liability Insurance.
- b. Required equipment checklist, to be signed and dated.
- c. Waiver, to be signed and dated
- d. In date Life Raft inspection certificate or Anti-Exposure suit certificate dated and signed (if applicable)
- e. Emergency Contact information in Yacht Scoring

7. SAILING INSTRUCTIONS

Sailing Instructions will be distributed at the mandatory Skippers' Meeting. The Sailing Instructions will also be available for downloading from Yacht Scoring at www.yachtscoring.com.

8. REQUIRED EQUIPMENT

8.1 The Required Equipment List for the 2023 Challenges shall be posted to the GLSS website: www.solosailors.org/mac

8.2 The Great Lakes Singlehanded Society recommends that a Skipper wear a Safety Harness designed and constructed for offshore sailing and be always tethered to the boat. However, a skipper need not be tethered to the boat if they are wearing:

- a. a self-inflating life jacket with personal strobe and whistle AND a
- b. Personal Location Beacon (PLB) registered with a current SARSAT registration sticker, AND
- c. a registered DSC capable waterproof VHF radio when they are out of the cabin.

Otherwise, a Skipper shall be tethered to the yacht from the time of casting off the dock to start the Challenge until the yacht crosses the finish line and returns to the proximity of the dock. Such life jacket is to include a personal strobe and whistle.

8.3 The use of powered winches and powered winch drivers shall be permitted

9. DATE

The start of the Challenge will be on Saturday, June 24, 2023.

10. COURSES

10.1 Port Huron:

a. Port Huron to Mackinac Island:

The Challenge shall take place on the waters of Lake Huron beginning from a starting line approximately 1.5 miles NNE of the Blue Water Bridge, to Mackinac Island as set out in the Sailing Instructions.

b. Super Mac from Port Huron to Chicago:

The Challenge shall take place on the waters of Lake Huron beginning from a starting line approximately 1.5 miles NNE of the Blue Water Bridge, to Mackinac Island then to Chicago as set out in the Sailing Instructions.

c. Super Mac and Back from Port Huron to Chicago to Port Huron:

The Challenge shall take place on the waters of Lake Huron beginning from a starting line approximately 1.5 miles NNE of the Blue Water Bridge, to Mackinac Island proceeding to Chicago then back to Port Huron as set out in the Sailing Instructions.

10.2 Chicago:

a. Chicago to Mackinac Island:

The Challenge shall take place on the waters of Lake Michigan beginning from a starting line southeast of the south end of the outer break wall to Mackinac Island as set out in the Sailing Instructions.

b. Super Mac from Chicago to Port Huron:

The Challenge shall take place on the waters of Lake Michigan beginning from a starting line southeast of the south end of the outer break wall to Mackinac Island proceeding to Port Huron as set out in the Sailing Instructions Amendment #1.

c. Super Mac and Back from Chicago to Port Huron to Chicago:

The Challenge shall take place on the waters of Lake Michigan beginning from a starting line southeast of the south end of the outer break wall to Mackinac Island proceeding to Port Huron then back to Chicago as set out in the Sailing Instructions Amendment #1.

11. STRUCTURE OF RACING DIVISIONS

Boats entered in the event will compete in several Monohull or Multihull divisions.

MWPHRF ratings will be used for handicapping boat performance within each monohull division. The Distance Handicap will be used. If the certificate does not have a DCH, it may be changed at the discretion of the Race Director. GLMRA ratings will be used for handicapping multihull boat performance.

JAM (jib and main only) ratings will not be used.

The GLSS does not give the RF credit (roller furling) or the LP credit (luff perpendicular), if there are any.

Any Skipper wishing to participate in the Challenge without a MWPHRF or a GLMRA shall be assigned the base rating for the lake by the Race Director. A six second/mile penalty shall be imposed to that base rating.

12. AWARDS

12.1 Skippers and their guests are invited to attend the Awards Luncheon to be held at the Mackinac Island Yacht Club at 1200 hours on Wednesday, June 28, 2023.

12.2 All Skippers who finish the course/s within the allotted time and within the rules and entry conditions set forth by the GLSS directors will be awarded a commemorative GLSS medallion acknowledging this achievement.

12.3 In years with Super Mac and Super Mac & Back courses, participants are eligible for medallions and flags for each of the courses they complete.

12.4 The course distance is 241 nautical miles for the Port Huron to Mackinac course, and 278 nautical miles for the Chicago to Mackinac Island course. Port Huron Super Mac distance is 524 nautical miles. Chicago Super Mac distance is 522 nautical miles. PH Super Mac and Back distance is 1046 nautical miles. Chicago Super Mac and Back distance is 1044 nautical miles.

Flags will be awarded using PHRF or GLMRA time allowances calculated on a time-on-distance basis. Flags will be awarded by using the following criteria:

Two boats in a division – 1st place.

Three boats in a division – 1st and 2nd place.

Four or more boats in a division – 1st, 2nd and 3rd place.

***Late entrants may not receive a commemorative medallion.**

12.5 The **President's Challenge Cup** will be awarded to the first-time finish challenger with the best corrected time in a monohull boat on each course.

The GLSS reserves the right to provide additional awards for exceptional passage or seamanship.

13. SAFETY INSPECTIONS

- a. Solo Mac: Each boat may be inspected upon finishing the Challenge.
- b. Super Mac and Super Mac & Back: boats may be inspected **prior** to start of Challenge
- c. Boats failing inspection shall be subject to penalty at the sole discretion of the Race Committee

14. TRACKING

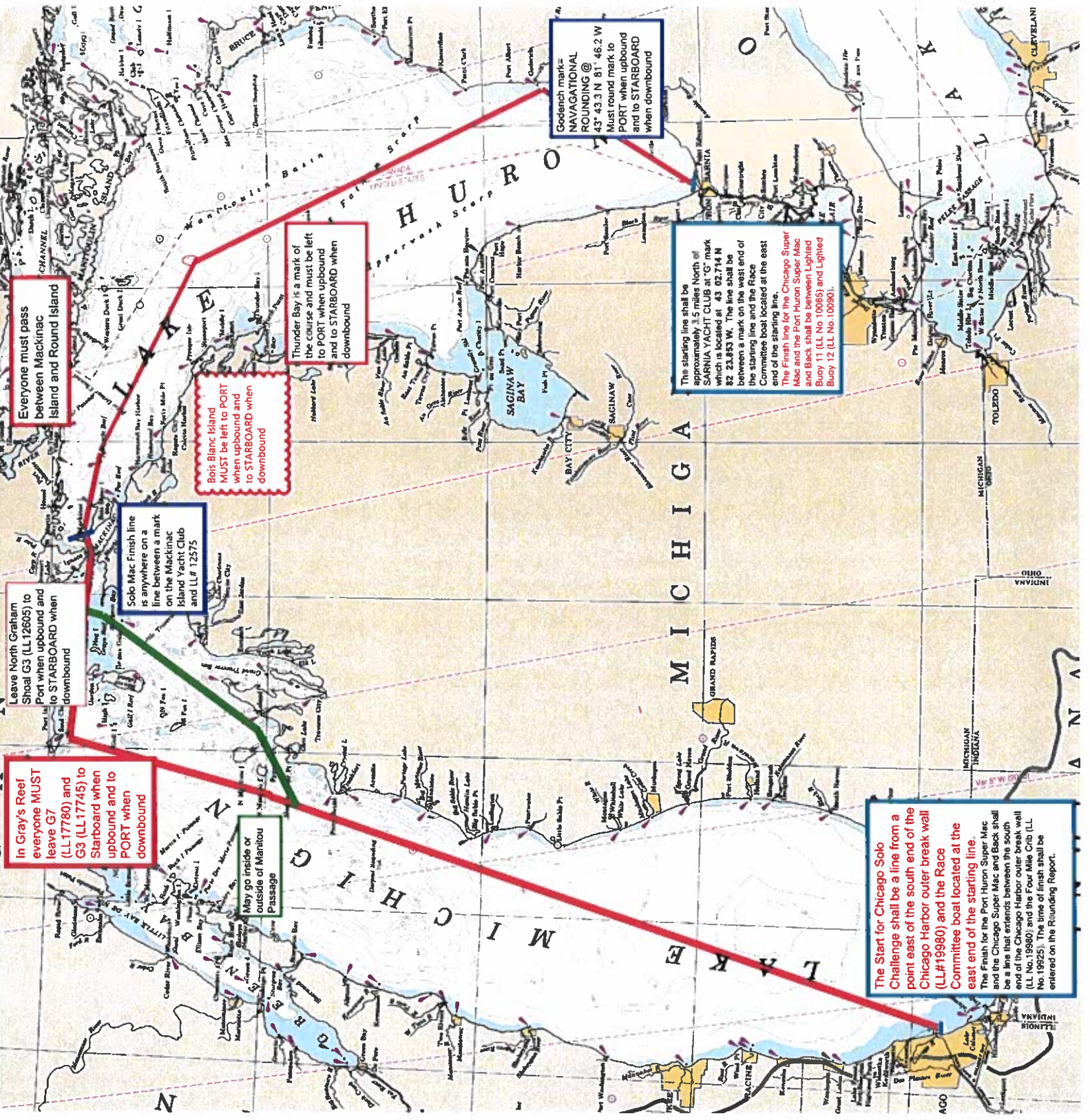
The use of the SPOT tracking device or the equivalent and AIS shall be optional in the Port Huron to Mackinac Solo and the Chicago to Mackinac Solo, but is highly recommended.

The use of the SPOT tracking device or the equivalent is MANDATORY and AIS is highly RECOMMENDED in all Super Macs as well as all Super Mac and Backs. The GLSS does not provide tracking devices.

15. RISK AND LIABILITY

To the fullest extent permitted by law, I hereby waive any rights I may have to sue the race organizers (the Great Lakes Singlehanded Society, the officers and directors, race committee, protest committee, host club, sponsors, or any other organization or official or member of such a committee) involved with the event with respect to any and all personal injury or property damage suffered by myself or my yacht, including death, as a result of my participation in this event and hereby release to the fullest extent permitted by law the race organizers from any and all liability associated with my participation in this event .

2023



Everyone must pass between Mackinac Island and Round Island

Leave North Graham Shoal G3 (LL12605) to Port when upbound and to STARBOARD when downbound

In Gray's Reef everyone MUST leave G7 (LL17780) and G3 (LL17745) to Starboard when upbound and to PORT when downbound

Solo Mac Finish line is anywhere on a line between a mark on the Mackinac Island Yacht Club and LL# 12575

Bois Blanc Island MUST be left to PORT when upbound and to STARBOARD when downbound

Thunder Bay is a mark of the course and must be left to PORT when upbound and to STARBOARD when downbound

Godenich mark- NAVAGATIONAL ROUNDING @ 43° 43.3 N 81° 46.2 W Must round mark to PORT when upbound and to STARBOARD when downbound

The starting line shall be approximately 1.5 miles North of SARNIA YACHT CLUB at "G" mark which is located at 43 02.714 N 82 23.853 W. The line shall be between a mark on the west end of the starting line and the Race Committee boat located at the east end of the starting line. The Finish line for the Chicago Super Mac and the Port Huron Super Mac and Back shall be between Lighted Buoy 11 (LL No. 10065) and Lighted Buoy 12 (LL No. 10090).

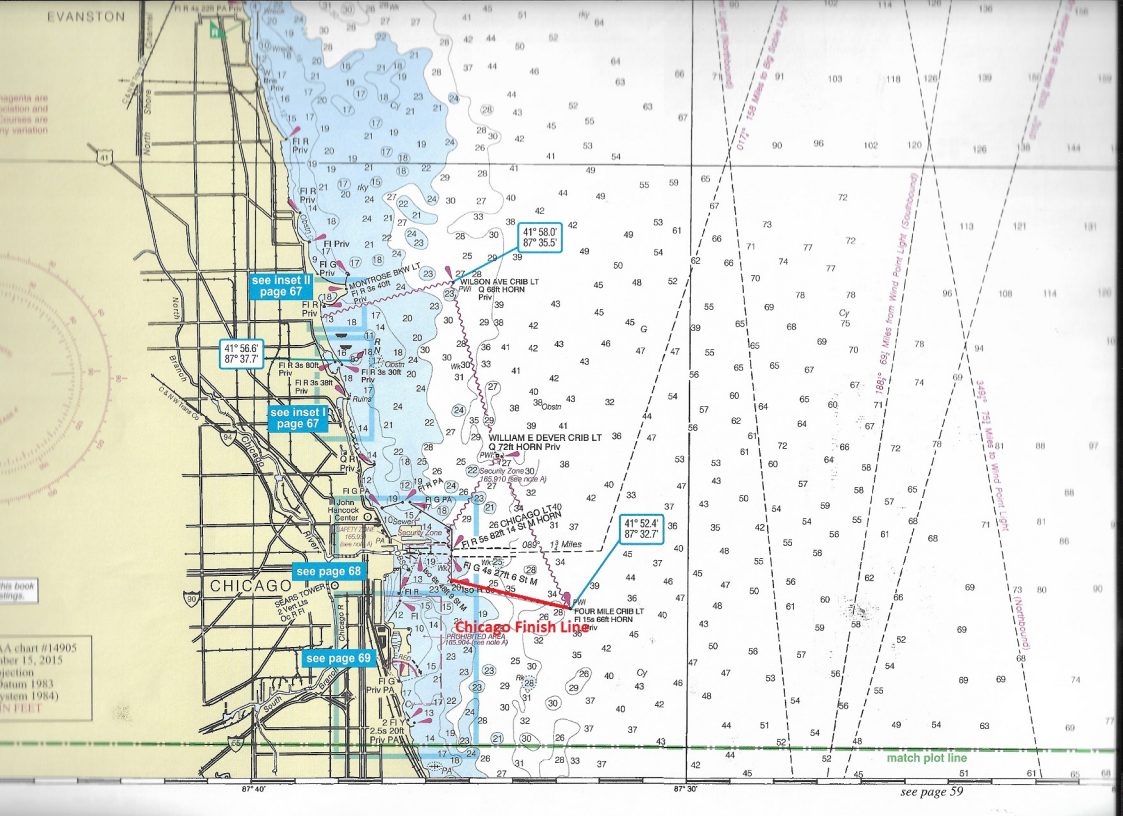
The Start for Chicago Solo Challenge shall be a line from a point east of the south end of the Chicago Harbor outer break wall (LL#19980) and the Race Committee boat located at the east end of the starting line. The Finish for the Port Huron Super Mac and the Chicago Super Mac and Back shall be a line that extends between the south end of the Chicago Harbor outer break wall (LL No. 19980) and the Four Mile Crib (LL No. 19925). The time of finish shall be entered on the Rounding Report.

May go inside or outside of Manitou Passage

depths are in fathoms and soundings are in feet

Chicago Finish Line

Chart #14905
Edition 15, 2015
Datum 1983
System 1984
IN FEET



see inset II page 67

41° 56.6' 87° 37.7'

see inset I page 67

see page 68

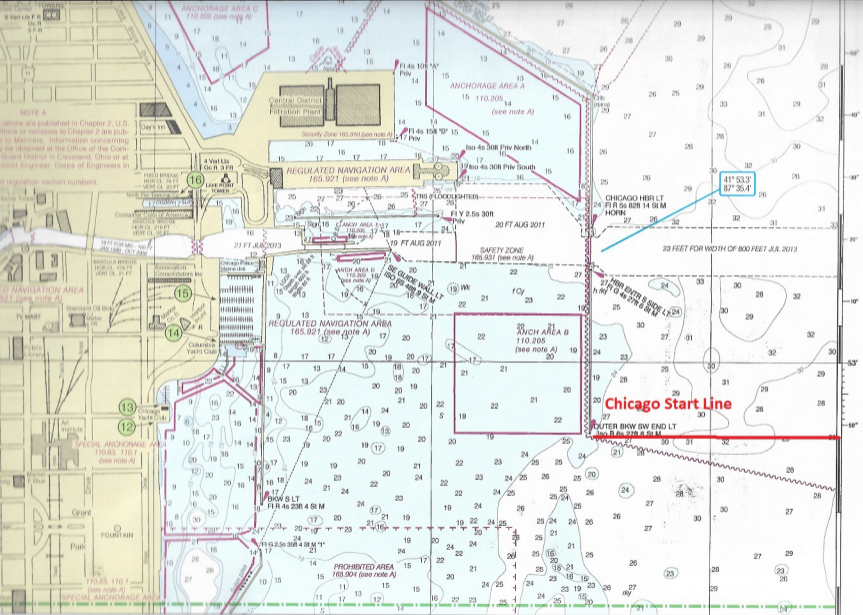
see page 69

41° 58.0' 87° 35.5'

41° 52.4' 87° 32.7'

match plot line

see page 59



NOTE A
Charts are published in Chapter 2, U.S. Hydrographic Survey, or revisions to Chapter 2 are published in the U.S. Hydrographic Survey. Information concerning the U.S. Hydrographic Survey is obtained at the Office of the Commandant, U.S. Coast Guard, Cleveland, Ohio or at the nearest Engineer, Corps of Engineers in the vicinity.

REGULATED NAVIGATION AREA 165.921 (see note A)

REGULATED NAVIGATION AREA 165.921 (see note A)

SPECIAL ANCHORAGE AREA 110.83, 110.1 (see note A)

SPECIAL ANCHORAGE AREA 110.83, 110.1 (see note A)

Central District Filtration Plant

4 VertiLis Floor 3 FR
LABORATORY

Chicago Public Market

Chicago Public Market

Chicago Public Market

Chicago Public Market

Chicago Public Market

Chicago Public Market

Chicago Public Market

Chicago Public Market

Safety Zone 165.910 (see note A)

REGULATED NAVIGATION AREA 165.921 (see note A)

REGULATED NAVIGATION AREA 165.921 (see note A)

PROHIBITED AREA 165.904 (see note A)

ANCHORAGE AREA A 170.205 (see note A)

ANCH AREA B 110.205 (see note A)

Chicago Start Line

41° 53.3'
87° 35.4'

23 FEET FOR WIDTH OF 800 FEET JUL 2013

SAFETY ZONE 165.931 (see note A)

OUTER BKW SW END LT

HBR ENTRI'S SPOK LT

CHICAGO HBR LT

SE GUE WALL LT

SE GUE WALL LT

SE GUE WALL LT

SE GUE WALL LT

SE GUE WALL LT

SE GUE WALL LT

SE GUE WALL LT

SE GUE WALL LT

SE GUE WALL LT

SE GUE WALL LT

SE GUE WALL LT

SE GUE WALL LT

SE GUE WALL LT

BOW S LT

BOW S LT

BOW S LT

BOW S LT

PROHIBITED AREA 165.904 (see note A)

PROHIBITED AREA 165.904 (see note A)

PROHIBITED AREA 165.904 (see note A)

NOTE A
Charts are published in Chapter 2, U.S. Hydrographic Survey, or revisions to Chapter 2 are published in the U.S. Hydrographic Survey. Information concerning the U.S. Hydrographic Survey is obtained at the Office of the Commandant, U.S. Coast Guard, Cleveland, Ohio or at the nearest Engineer, Corps of Engineers in the vicinity.

REGULATED NAVIGATION AREA 165.921 (see note A)

REGULATED NAVIGATION AREA 165.921 (see note A)

SPECIAL ANCHORAGE AREA 110.83, 110.1 (see note A)

SPECIAL ANCHORAGE AREA 110.83, 110.1 (see note A)

Central District Filtration Plant

4 VertiLis Floor 3 FR
LABORATORY

Chicago Public Market

Chicago Public Market

Chicago Public Market

Chicago Public Market

Chicago Public Market

Chicago Public Market

Chicago Public Market

Chicago Public Market

Safety Zone 165.910 (see note A)

REGULATED NAVIGATION AREA 165.921 (see note A)

REGULATED NAVIGATION AREA 165.921 (see note A)

PROHIBITED AREA 165.904 (see note A)

ANCHORAGE AREA A 170.205 (see note A)

ANCH AREA B 110.205 (see note A)

Chicago Start Line

41° 53.3'
87° 35.4'

23 FEET FOR WIDTH OF 800 FEET JUL 2013

SAFETY ZONE 165.931 (see note A)

OUTER BKW SW END LT

HBR ENTRI'S SPOK LT

CHICAGO HBR LT

SE GUE WALL LT

SE GUE WALL LT

SE GUE WALL LT

SE GUE WALL LT

SE GUE WALL LT

SE GUE WALL LT

SE GUE WALL LT

SE GUE WALL LT

SE GUE WALL LT

SE GUE WALL LT

SE GUE WALL LT

SE GUE WALL LT

SE GUE WALL LT

BOW S LT

BOW S LT

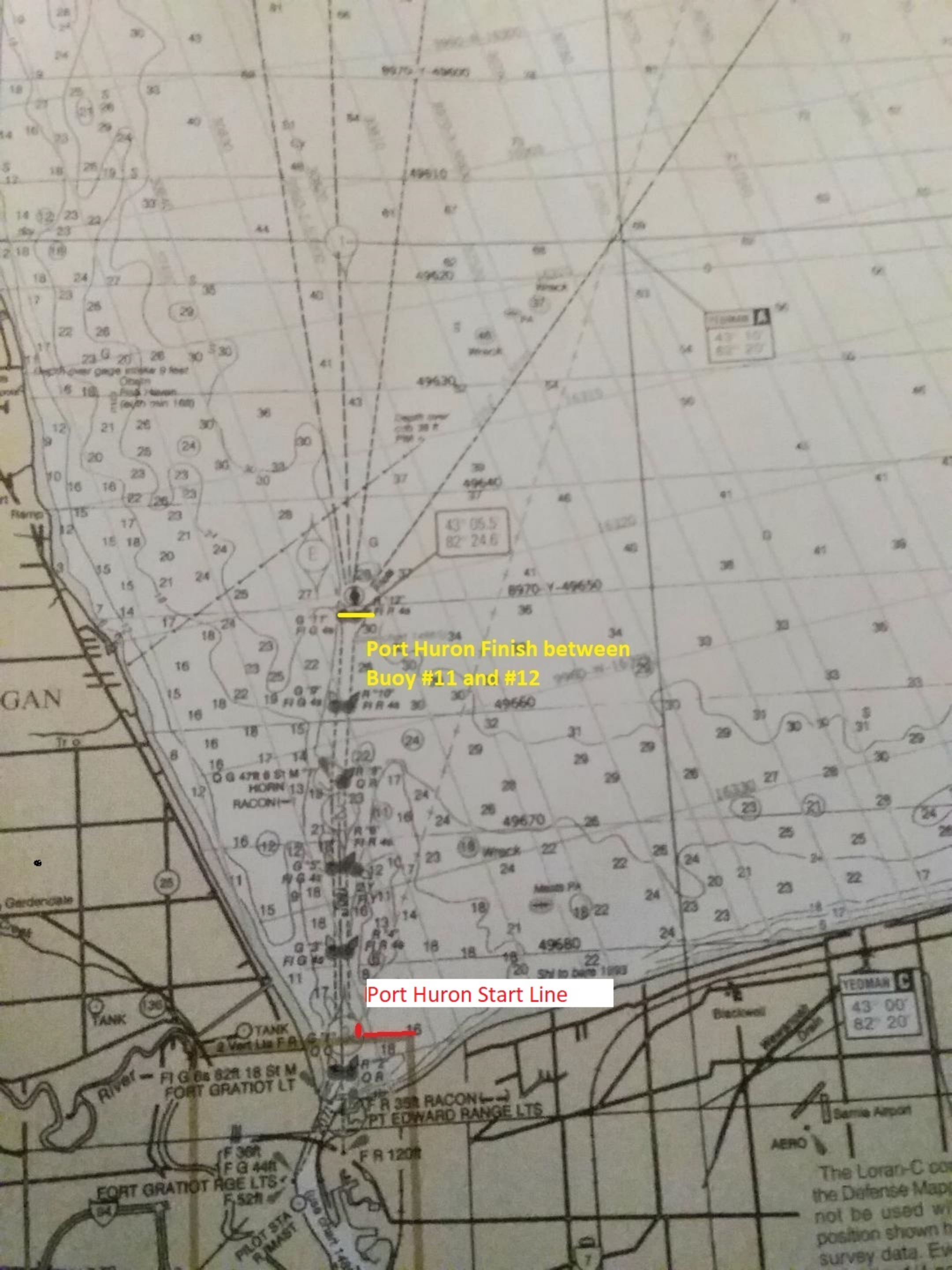
BOW S LT

BOW S LT

PROHIBITED AREA 165.904 (see note A)

PROHIBITED AREA 165.904 (see note A)

PROHIBITED AREA 165.904 (see note A)



Port Huron Finish between Buoy #11 and #12

Port Huron Start Line

The Loran-C on the Defense Map not be used with position shown by survey data. Ev

Coast Guard "Cardinal Points"

IN AN EMERGENCY. If an emergency occurs during the event, such as a person overboard, medical problem, taking on water, or disabling damage from storm, unaccounted for paddlers, and assistance from the Coast Guard is required, we recommend you contact us via VHF-FM channel 16. You do not need to know what the closest Coast Guard station is -- we will determine that -- simply call "Mayday, mayday, mayday, Coast Guard, this is [vessel name] on channel 16, over." During your initial contact, we ask that you provide the following information:

- **Location** (GPS coordinates and/or geographic reference),
- **Nature of distress,**
- **Number of persons on board** and
- **Description of your vessel.**

If you have an EPIRB or PLB (preferred over SPOT devices) on board, activate that as well because the SARSAT satellite system has global coverage beyond VHF-FM or cellular antenna range. Launching of flares or displaying of other visual signaling devices should also be considered. Use of cellular telephones should be considered a tertiary means of distress alerting.

WHAT TO EXPECT. Once the Coast Guard receives your distress call, we can decide what the closest response units are, what capabilities to bring and approximately how long it will take to get to your location. The Coast Guard communications watch stander on the other end of the radio may have additional questions for you to further ascertain your situation. For those accustomed to police or fire units responding within a few minutes in your city, be aware that Coast Guard boats and helicopters may take longer to reach your location because we may have to transit dozens or even hundreds of miles. Do your best to stabilize your situation in the meantime. The Coast Guard can also provide basic first responder medical care from our boats or helicopters, but paramedic-level (and greater) medical support must be provided from land-based resources. Please be aware that we do not have divers with subsurface or SCUBA capability. Our helicopters carry a rescue swimmer who can conduct rescues on or near the surface only. If subsurface rescue may be required, let us know that as soon as possible because SCUBA capability must come from other agencies and can take hours to coordinate and transport.

RESCUE 21. The Coast Guard recently installed the Rescue 21 communications system around the Great Lakes, greatly increasing our reception and transmission capability. For event participants, your procedure for contacting us remains unchanged - see the "Mayday" call guidance in the "In an emergency" paragraph above. For our part, Rescue 21 allows us to

rapidly obtain a line of bearing from our radio towers to the location of the VHF-FM caller. This helps us home in on your position more quickly and easily, and also helps us catch hoax callers. Again, you do not need to know where our towers or stations are - call us on VHF-FM channel 16 and we will work with you on a case-by-case basis. In addition, all participating members are required to monitor their VHF-FM radios.

IN CASE OF STORMS. If severe storms do occur, it is up to event participants to decide whether to continue their courses or to divert toward cover or safe harbors. The Coast Guard cannot make that decision for you, and we are prohibited from providing specific sailing directions (courses to steer, etc.) to you. The Coast Guard communications watch stander can, however, transmit to you published/charted navigational aids, hazards and information that may be helpful in making your decision.

A WORD ABOUT HYPOTHERMIA. Even if air temperatures during the event days are warm and seasonable, be advised that lake temperatures will likely be cold enough in many locations to cause moderate to severe hypothermia within hours. Participants should dress themselves with those water temperatures in mind - and of course, wear their personal flotation device. Hypothermia is an insidious killer that catches unprepared people in the water off guard, so you stack the deck in your favor by wearing a survival suit, dry suit, wet suit or anti-exposure coveralls.

NINTH COAST GUARD DISTRICT "SAR ETHOS." The men and women of the Ninth Coast Guard District take our search and rescue (SAR) responsibilities very, very seriously. In fact, our philosophy, or "SAR Ethos" is to treat every potential victim as we would our own family. So know that if you get in trouble out there, we will do our very best. Good luck!

GREAT LAKES SEARCH AND RESCUE LINE - 1-800-321-4400.

Joint Rescue Coordination Center Cleveland
Ninth Coast Guard District
1240 E. 9th Street
Cleveland, OH 44199

1-216-902-6117/6118/6109

ninthdistrictcommandcenter@uscg.mil

Summer 2023 Saildrone Ops on lakes Erie, Michigan, and Huron

Lake Erie mission

AIS identifier: "SD-1080"

MMSI: 338431586

Description: Bright orange Sailboat, with rigid sail, clearly marked with 'Saildrone'; remotely helmed from command centers in three locations around the world.

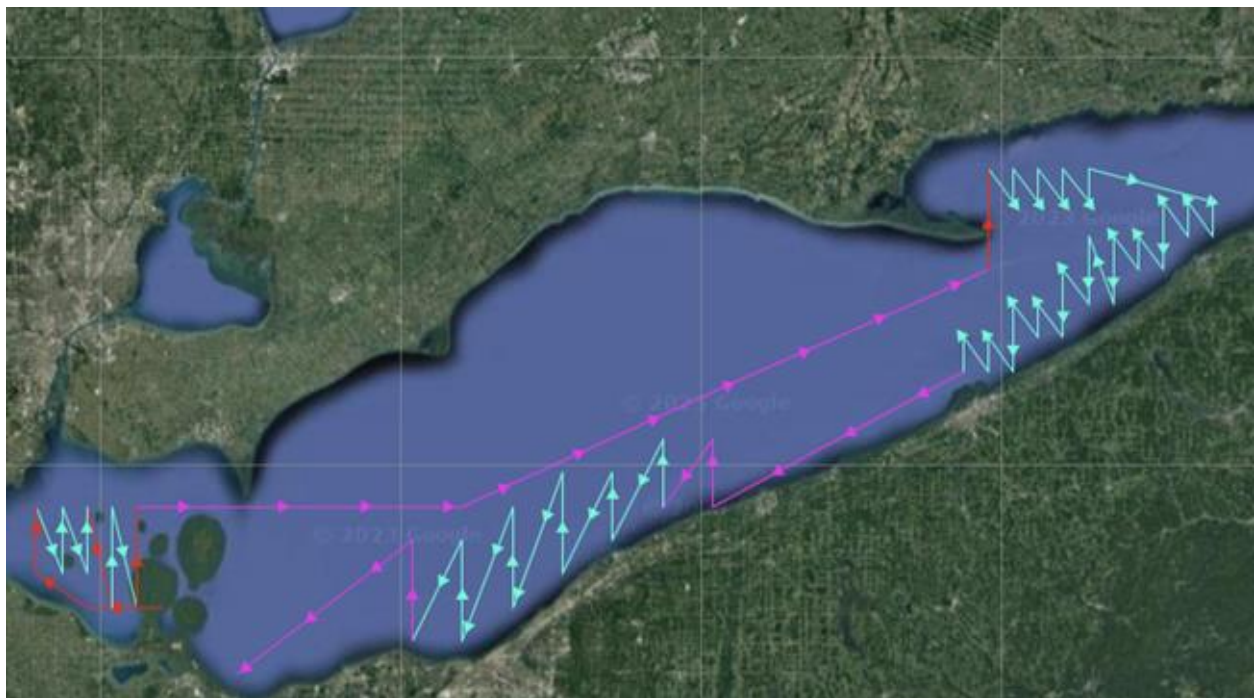
Deployment date (approx): 13 July 23

Deployment location: Erie, PA

USGS mission dates: 1 Aug 23 - 26 Sept 23

Average speed: ~2 kn

Mission description: Mission start in Western basin tracking HABS and fish densities, transit to eastern basin to study large cold water predators; finish mission in south central basin focused on fish densities relative to anoxia. Throughout mission, Saildrone and conventional research vessels (from USGS, OHDNR, and OMNRF) will meet to gather comparative data on fish densities in the same water on the same night. See map below.



Lake Michigan/Huron mission

AIS identifier: "SD-1084"

MMSI: 338431592

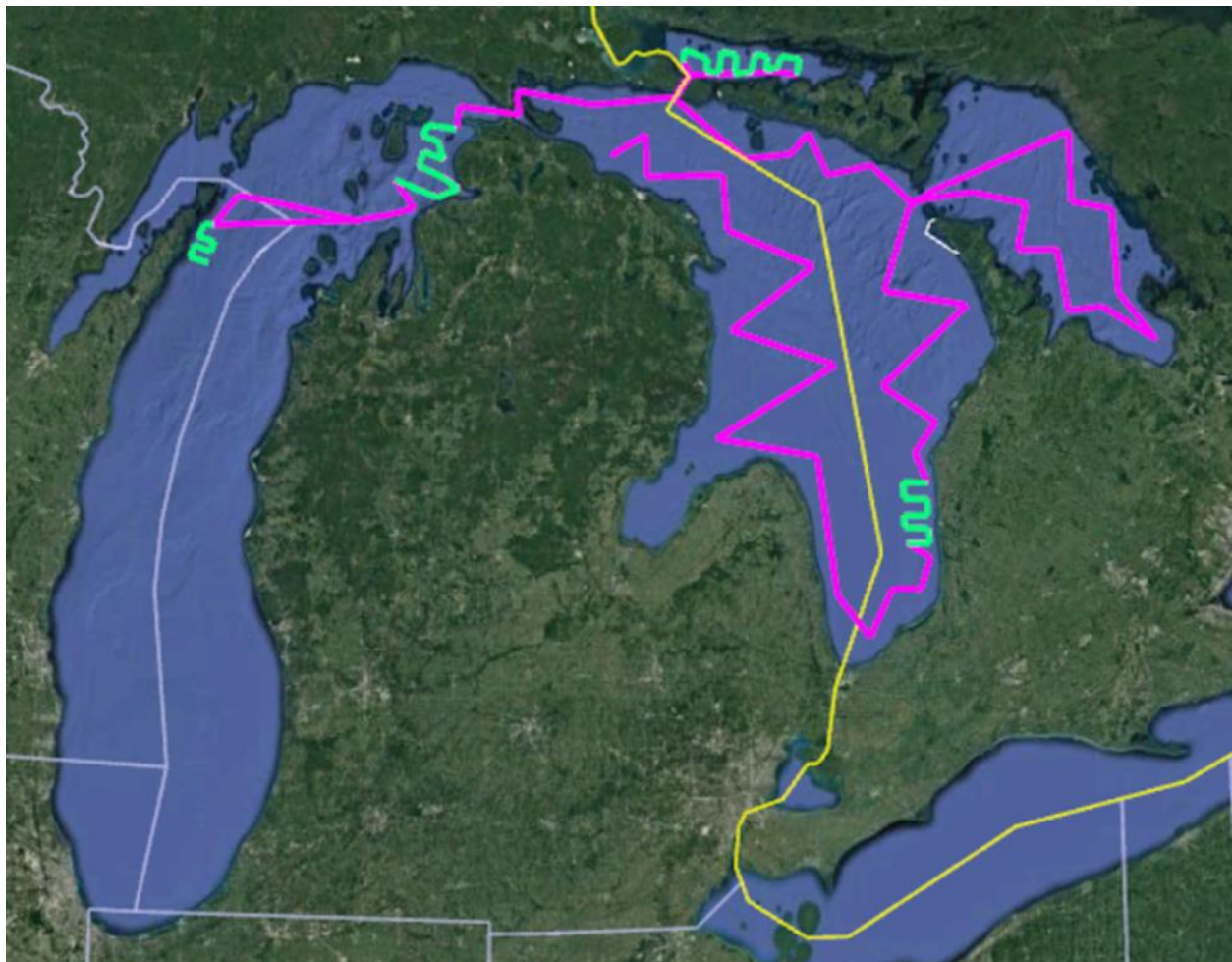
Deployment date (approx): 19 July 23

Deployment location: Charlevoix, MI

USGS mission dates: 1 Aug 23 - 26 Sept 23

Average speed: ~2 kn

Tentative mission description: [Subject to change due to ongoing staffing issues.] Deploy from Charlevoix and conduct coordinated sampling with partner vessels near the Door Peninsula and east of Beaver Island. Tow through the Straights around 10 August and complete lake-wide survey of Lake Huron including Canadian waters (North Channel, Georgian Bay, and main basin). SD-1080 will be towed in and out of the North Channel. Conduct coordinated sampling with vessels from USFWS, USGS, and MDNR opportunistically)



CURRENT NINTH DISTRICT BRIDGE MAINTENANCE/ACTIVITIES

Week [24/23]

Note: Short-term bridge maintenance closures and various activities may only be published [through Broadcast Notice to Mariners](#) and may not be included [in the Local Notice to Mariners](#). Mariners should both *listen* to Broadcast Notice to Mariners (BNM) and *read* Coast Guard Local Notice to Mariners (LNM) available by clicking [HERE](#) for the most recent and complete marine information.

Mariner & Bridge Owner TEAMS Meeting information at the end of this notice.

PUBLIC NOTICES FOR 9th District BRIDGES: <https://www.navcen.uscg.gov/D9BN>

Please contact us with any questions or concerns:

Blair Stanifer (216) 902-6086 or William.B.Stanifer@uscg.mil
Lee Soule (216) 902-6085 or Lee.D.Soule@uscg.mil
Michael Walker (216) 902-6087 or Michael.O.Walker2@uscg.mil
FAX: (216) 902-6088

Commander (dpb)
Ninth Coast Guard District
1240 E. 9th St. Room 2047B
Cleveland, Ohio 44199-2001

NOTES:

The Anthony J. Celebrezze Federal Building (where the bridge office is located) will be closed on June 19 in observance of **Juneteenth**, a Federal Holiday; but the District and Sector Command Centers will be open 24/7. If you have urgent bridge issues on these days call 216-902-6118 for the D9 Command Center who will contact one of us for you.

ACTIVE BROADCAST NOTICE TO MARINERS (BNM)

SAFETY BCST PLUS SKED BCST UNTIL 111800Z JUN 23
U.S.C.G. NINTH DISTRICT NOTICE TO MARINERS C076-23
WI - LAKE MICHIGAN - MANITOWOC HARBOR

ON JUNE 11, 2023, BETWEEN THE HOURS OF 0700 AND 1300, THE 8TH STREET BRIDGE AT MILE 0.29 OVER THE MANITOWOC RIVER WILL BE SECURED TO MASTED NAVIGATION IN CONJUNCTION WITH THE MANITOWOC MARATHON

SAFETY BCST PLUS SKED BCST UNTIL 170100Z JUN 23
U.S.C.G. NINTH DISTRICT NOTICE TO MARINERS C077-23
MI - LAKE SUPERIOR - KEWEENAW WATERWAY

ON JUNE 16, 2023, BETWEEN THE HOURS OF 1845 AND 2100 THE US 41 BRIDGE MILE 16 OVER THE KEWEENAW WATERWAY WILL BE SECURED IN THE INTERMEDIATE POSITION IN CONJUNCTION WITH THE BRIDGEFEST PARADE. VESSELS ABLE TO PASS UNDER THE BRIDGE WITHOUT AN OPENING MAY DO SO AT ANY TIME. SAFETY BCST PLUS SKED BCST UNTIL 171600Z JUN 23

U.S.C.G. NINTH DISTRICT NOTICE TO MARINERS C078-23
WI - LAKE MICHIGAN - RACINE HARBOR

ON JUNE 17, 2023, BETWEEN THE HOURS OF 0740 AND 1100, THE MAIN STREET BRIDGE AT MILE 0.31 OVER THE ROOT RIVER WILL BE SECURED TO MASTED NAVIGATION IN CONJUNCTION WITH THE ANNUAL LIGHTHOUSE RUN. VESSELS ABLE TO PASS UNDER THE BRIDGE WITHOUT AN OPENING MAY DO SO AT ANY TIME.

SAFETY BCST PLUS SKED BCST UNTIL 092200Z JUN 23
U.S.C.G. NINTH DISTRICT NOTICE TO MARINERS C079-23
IL- LAKE MICHIGAN - CALUMET HARBOR

ON JUNE 8 AND JUNE 9, 2023, BETWEEN THE HOURS OF 0700 AND 1700 EACH DAY THE 92ND STREET BRIDGE AT MILE 0.76 (CORPS MILE 332.4) OVER THE CALUMET RIVER WILL HAVE ONE LEAF SECURED TO MASTED NAVIGATION TO ALLOW FOR THE INSTALLMENT OF A NEW DRIVE MOTOR. THE OTHER LEAF WILL OPERATE NORMALLY.

SAFETY BCST PLUS SKED BCST UNTIL 232300Z JUN 23
U.S.C.G. NINTH DISTRICT NOTICE TO MARINERS C080-23
WI- LAKE MICHIGAN – GREEN BAY

FROM JUNE 19 THROUGH JUNE 23, 2023, BETWEEN THE HOURS OF 0500 AND 1800 EACH DAY THE BART STARR MEMORIAL BRIDGE AT MILE 1.81 OVER THE FOX RIVER WILL BE SECURED TO MASTED NAVIGATION FOR MAINTENANCE. VESSELS ABLE TO PASS UNDER THE BRIDGE WITHOUT AN OPENING MAY DO SO AT ANY TIME

SAFETY BCST PLUS SKED BCST UNTIL 222000Z JUN 23
U.S.C.G. NINTH DISTRICT NOTICE TO MARINERS C081-23
IN- LAKE MICHIGAN – INDIANA HARBOR CANAL

FROM JUNE 20 THROUGH JUNE 22, 2023, BETWEEN THE HOURS OF 0900 TO 1500 EACH DAY THE ELGIN, JOLIET, AND EASTERN RAILROAD BRIDGE, AT MILE 1.89 OVER THE INDIANA HARBOR CANAL WILL BE SECURED TO MASTED NAVIGATION FOR MAINTENANCE. VESSELS ABLE TO PASS UNDER THE BRIDGE WITHOUT AN OPENING MAY DO SO AT ANY TIME.

SAFETY BCST PLUS SKED BCST UNTIL 162000Z JUN 23
U.S.C.G. NINTH DISTRICT NOTICE TO MARINERS C082-23
MI- DETROIT RIVER

ON JUNE 20, 2023, BETWEEN THE HOURS OF 0900 AND 1600 DIVERS WILL BE WORKING UNDER THE WEST JEFFERSON AVENUE BRIDGE AT MILE 1.10 OVER THE RIVER ROUGE. MARINERS SHOULD PROVIDE A 15-MINUTE ADVANCE NOTICE OF ARRIVAL TO THE DRAWTENDER TO ALLOW DIVERS TO MOVE OUT OF THE WAY.

FEDERAL REGULATIONS DOCKET STATUS

USCG-2022-0237 -NPRM – Keweenaw Waterway – Posted, Comments due June 12, 2023.
USCG-2023-0113 -NPRM- Cheboygan River – Posted, Comments Due June 5, 2023
USCG-2023-0183 -NPRM – River Rouge – Posted, Comments Due July 5, 2023.
USCG-2023-0184 -NPRM – Maumee River – Posted, Comments due June 26, 2023.
USCG-2023-0185 -NPRM – Sandusky Bay – Posted, Comments due July 7, 2023
USCG-2023-0186 -NPRM – Portage River – Posted, Comments due July 5, 2023
USCG-2023-0187 -NPRM – Black River – Posted, Comments Due July 3, 2023.
USCG-2023-0188 -NPRM – Cuyahoga River – Posted, Comments due July 21, 2023
USCG-2023-0189 -NPRM – Ashtabula River – Posted, Comments due July 5, 2023

BRIDGE DELAY REPORTS SNAPSHOT

2023	Verbal Complaints Received	Delay Reports Received	Delay Reports Proven	Fine Amount Proposed
Commercial Vessels	14	34	0	
Recreational Vessels	0	0	0	

ACTIVE LOCAL NOTICE TO MARINERS (LNM)

GREAT LAKES REGION

GREAT LAKES, Drawbridge Delay Reports, Chart 14500

Mariners are requested to submit Reports of Drawbridge Signal/Operations Delays directly to the Ninth Coast Guard District Bridge Branch using the attached form. Reports of signal or drawbridge delays have been processed by Coast Guard Marine Safety Offices in recent years but will now be processed and traced by the Bridge Branch. Reports may be sent by mail, e-mail, or by fax. The mailing address and fax number are on the form. The updated form is printed and also attached on the last page of this list.

[08/05] [34/12]

ST. LAWRENCE SEAWAY

NY STATE CANAL SYSTEM

(Everything West of St. Johnsville, NY)

NEW YORK STATE CANAL SYSTEM – NY - Erie Canal – Chart 14786

From April 1, 2023, through **July 1, 2024**, snoopers trucks will be working under the E-182 Main Street Bridge, mile 278.93, over the Erie Canal to rehabilitate the bridge in the fully open position. The permitted navigation lights will be removed and temporarily replaced with steady burning yellow lights on the bottom and four-corners of the drawspan. Spotters will warn of approaching vessels and move the man lift to allow vessels to pass.

[12/22]

*******REVISED*******

NEW YORK STATE CANAL SYSTEM – NY - Erie Canal – Chart 14786

From April 10 through **June 30, 2023**, between the hours of 0700 and 1900, Monday through Friday, snoopers type vehicles will be washing the underside of all the bridges from E-232 at Mile 320.67 to E-248 at Mile 338.44 over the Erie Canal, Part of the New York Barge Canal. Spotters will warn of approaching vessels and move the man lift to allow vessel to pass under the bridge. Mariners should avoid any falling water from the bridge.

[08/23] [19/23] [22/23]

NEW YORK STATE CANAL SYSTEM – NY - Erie Canal – Chart 14786

From May 15 through **September 15, 2023**, between the hours of 0730 and 1700, Monday through Friday a 35-foot Harcon Inspection Vessel will be working under the O4 Culvert Street at mile 2.19 over the Oswego Canal, the bridges between the E-60 Higginsville Rd Bridge, mile 126.04, and the E-92, Armitage Road Bridge, mile 205.59, over the Erie Canal, and the S1 US 20 Bridge at mile 2.97 and the S7 Bridge Street Bridge, mile 8.90

over the Cayuga Seneca Canal. The Harcon will monitor VHF-FM Marine Channel 16 and will move if provided a 15-min advance notice of arrival.

[17/23]

NEW YORK STATE CANAL SYSTEM – NY – Erie Canal – Chart 14786 – Proposed Bridge Construction

The U. S. Coast Guard is requesting mariner and public input regarding the proposed construction of the I-490 Bridge, Bridge E-131A, across Mile 250.29 of the Erie Canal near Perinton, Monroe County, New York. The New York State Department of Transportation proposes to replace the existing three-span fixed bridge with two single-span fixed bridges. The proposed structures would have a minimum vertical clearance of 15.50-feet and a horizontal clearance of 75.00-feet. The complete public notice including a map of the location, and plans for the proposed bridge can be viewed and printed from the U.S. Coast Guard Navigation Center's web site <https://www.navcen.uscg.gov/D9BN>, or by calling, emailing or mailing a request to the Coast Guard project manager, Mr. Michael Walker, Commander (dpb), Ninth Coast Guard District, 1240 E. 9th St., Room 2047, Cleveland, OH 44199, (216) 902-6087, or michael.o.walker2@uscg.mil. Comments received will be made part of the case record **until July 7, 2023**.

[19/22]

LAKE ONTARIO

LAKE ONTARIO – NY – Rochester Harbor – Chart 14815

On **September 24, 2023**, between the hours of 0745 and 0930, the O'Rourke Bridge at Mile 1.25 over the Genesee River will be secured to masted navigation in conjunction with the Rochester Marathon. Vessels able to pass under the bridge without an opening may do so at any time.

[08/23]

LAKE ONTARIO – NY – Chaumont Harbor – Chart 14811

From April 3 through **July 30, 2025**, between the hours of 0700 and 1900, Monday through Saturday contractors will be replacing the 12E Highway Bridge at Mile 0.8 over the Chaumont River. Three barges 120-feet by forty-feet or smaller will be working at the bridge and will monitor VHF-FM marine Channel 16. A 20-foot channel will be maintained through the construction area for vessels to pass through, but the barges will move if a 30-minute advance notice is provided directly to the barges.

[13/23]

LAKE ERIE - MAHONING RIVER - NIAGARA RIVER- ALLEGHENY RIVER

*****REVISED*****

LAKE ERIE – OH – Toledo Harbor – Chart 14847

From July 1, 2019, through **September 18, 2023**, a temporary causeway will be constructed between mile 6.73 and 6.76 for the construction of the new and demolition of the old Michael V. DiSalle Memorial (I-75) Bridge at Mile 6.73 over the Maumee River. The causeway will be marked with flashing yellow lights spaced approximately 10 meters apart with red over red lights marking the ends of the causeway. A 100-foot-wide channel will be provided for vessels to pass through the construction area. Mariners are encouraged to pass through the area at a slow speed.

[26/19] [21/20] [14/23]

LAKE ERIE – OH – Toledo Harbor – Chart 14847

On **July 1, 2023**, between the hours of 0700 and 0900 the Craig Memorial Bridge at Mile 3.30 over the Maumee River will be secured to masted navigation in conjunction with the River Run 10K event. Vessels able

to pass under the bridge without an opening may do so at any time.

[10/23]

LAKE ERIE – NY – Buffalo Harbor – Chart 14833

From May 1 through **August 21, 2023**, contractors will install work platforms between the seawall and the fendering of the Michigan Street Bridge at Mile 1.34 over the Buffalo River to repair and replace the fendering. When excavators are being used to move materials spotters will warn of approaching vessels and move the equipment for vessels to pass.

[15/23]

******* PROPOSED RULE *******

LAKE ERIE – OH – Toledo Harbor – Chart 14847

The Coast Guard has published in the Federal Register (88 FR 25572) a proposal to modify the operating schedule that governs the CSX Railroad Bridge, mile 1.07, the Wheeling and Lake Erie Railroad Bridge, mile 1.80, the Craig Memorial Bridge, mile 3.30, the Martin Luther King Jr. Memorial Bridge, mile 4.30, and the Norfolk Southern Railroad Bridge, mile 5.76, all over the Maumee River at Toledo, Ohio. The original regulation was published in 1986 and has been amended over the years but a full review of the regulations for the waterway has not been completed. The current regulations are cumbersome, difficult to understand, and cause confusion to recreational vessels and some drawtenders. We invite your comments on this proposed rulemaking. If you have questions on this proposed rule, call or email Mr. Lee D. Soule, Bridge Management Specialist, Ninth Coast Guard District; telephone 216-902-6085, email Lee.D.Soule@uscg.mil. Comments and related material must reach the Coast Guard on or before **June 26, 2023**. You may submit comments identified by docket number **USCG-2023-0184** using Federal Decision-Making Portal at <https://www.regulations.gov>.

[18/23]

*******PROPOSED RULE*******

LAKE ERIE – OH – Lorain Harbor Chart 14841

The Coast Guard has published in the Federal Register (**88 FR 28442**) a proposal to modify the operating schedule that governs the Charles Berry Bridge, mile 0.6, and the Norfolk Southern Railroad Bridge, mile 1.2, both over the Black River. The regulation has not been updated since 1986. The Coast Guard's proposed revisions will ensure the needs of all modes of transportation are being met. If you have questions on this temporary final rule, call or e-mail Mr. Lee D. Soule, Bridge Management Specialist, Ninth Coast Guard District; telephone 216-902-6085, e-mail Lee.D.Soule@uscg.mil. We invite your comments on this proposed rulemaking. You may submit comments identified by docket number **USCG-2023-0188** using Federal Decision-Making Portal at <https://www.regulations.gov>. Comments and relate material must reach the Coast Guard on or before **July 3, 2023**.

[18/23]

*******PROPOSED RULE*******

LAKE ERIE – OH – Sandusky Bay Chart 14845

The Coast Guard has published in the Federal Register (**88 FR 29584**) a proposal to modify the operating regulations and signaling requirements that govern the Norfolk Southern Railroad Bridge, mile 3.5, over the Sandusky Bay. Further, the Coast Guard also proposes adding information to clarify when and how wind blockers may be used on the Norfolk Southern Railroad Bridge, mile 3.5. If you have questions on this temporary final rule, call or e-mail Mr. Lee D. Soule, Bridge Management Specialist, Ninth Coast Guard District; telephone 216-902-6085, e-mail Lee.D.Soule@uscg.mil. We invite your comments on this proposed rulemaking. You may submit comments identified by docket number **USCG-2023-0188** using Federal Decision-Making Portal at <https://www.regulations.gov>. Comments and relate material must reach the Coast Guard on or before **July 7, 2023**.

[19/23]

*******PROPOSED RULE*******

LAKE ERIE – OH – Portage River Chart 14845

The Coast Guard has published in the Federal Register (88 FR 29007) a proposal to modify the operating regulations of the Monroe Street Highway Bridge, mile 0.4 and the Norfolk Southern Railroad Bridge, mile 1.5, over the Portage River at Port Clinton, Ohio. If you have questions on this temporary final rule, call or e-mail Mr. Lee D. Soule, Bridge Management Specialist, Ninth Coast Guard District; telephone 216-902-6085, e-mail Lee.D.Soule@uscg.mil. We invite your comments on this proposed rulemaking. You may submit comments identified by docket number **USCG-2023-0188** using Federal Decision-Making Portal at <https://www.regulations.gov>. Comments and relate material must reach the Coast Guard on or before **July 5, 2023**.

[19/23]

*******PROPOSED RULE*******

LAKE ERIE- OH - Ashtabula Harbor Chart 14836

The Coast Guard has published in the Federal Register (**88 FR 29586**) a proposal to modify the operating schedule that governs the Fifth Street Bridge, mile 0.15, and the Norfolk Southern Railroad Bridge, mile 1.5, both over the Ashtabula River. The Coast Guard also proposes signaling and signage changes for the Norfolk Southern Railroad Bridge, mile 1.5. The Coast Guard is modifying these rules in response to complaints received concerning the operations of one or more bridges in this waterway and a desire to improve safety, remove barriers to interstate commerce, improve communications, and standardize winter operations associated with these bridges. If you have questions on this temporary final rule, call or e-mail Mr. Lee D. Soule, Bridge Management Specialist, Ninth Coast Guard District; telephone 216-902-6085, e-mail Lee.D.Soule@uscg.mil. We invite your comments on this proposed rulemaking. You may submit comments identified by docket number **USCG-2023-0189** using Federal Decision-Making Portal at <https://www.regulations.gov>. Comments and relate material must reach the Coast Guard on or before **July 5, 2023**.

[19/23]

*******PROPOSED RULE*******

LAKE ERIE – OH – Cleveland Harbor Chart 14839

The Coast Guard has published in the Federal Register (**88 FR 32709**) a proposal to create a new operating schedule to govern all movable bridges over the Cuyahoga River. The Coast Guard is also proposing new rules that will assist mariners signal for and anticipate bridge openings. Mariners have raised concerns to the Ninth Coast Guard District Commander regarding the safety and consistency of moveable bridge operations on the Cuyahoga River. These additions are proposed in response to those concerns. If you have questions on this temporary final rule, call or e-mail Mr. Lee D. Soule, Bridge Management Specialist, Ninth Coast Guard District; telephone 216-902-6085, e-mail Lee.D.Soule@uscg.mil. We invite your comments on this proposed rulemaking. You may submit comments identified by docket number **USCG-2023-0188** using Federal Decision-Making Portal at <https://www.regulations.gov>. Comments and relate material must reach the Coast Guard on or before **July 21, 2023**.

LAKE ERIE – OH – Toledo Harbor – Chart 14847

From September 18 through **September 22, 2023**, between the hours of 0800 and 1700 daily, inspectors will be using snooper vehicles at the Craig Memorial Bridge at Mile 3.30 over the Maumee River. The bridge will require a 30-minute advance notice except on Tuesday and Wednesday when a 3-hour advance notice will be required. Mariners should provide the advance notice directly to the drawtender on VHF-FM Marine Channel 16 or by calling 419-373-4306.

[24/23]

DETROIT RIVER - LAKE ST. CLAIR - ST. CLAIR RIVER – RIVER ROUGE

*****REVISED*****

DETROIT RIVER – MI – Main Channel – Chart 14848

From November 1, 2022, through **August 30, 2024**, contractors will be constructing the Gordie Howe International Bridge at mile 16.7 over the Detroit River. No equipment will be placed in the water. Overhead work will have temporary steady burning yellow lights to mark new construction. A moving platform with quick flashing red lights and orange or red ball fenders on the bottom four corners with a safety net that hangs approximately 15-feet below low steel will be constructing the bridge. Mariners should avoid passing directly under the platform at any time. Snooper type vehicles will be utilized on the bridge throughout construction. Spotters will warn of approaching vessels and move the man lift to allow vessels to pass. When construction is completed and all equipment removed, the final vertical clearances for the bridge will be 152-feet for the center 100-feet of the navigation channel. No less than 137-feet of vertical clearance will be available at the channel limits. Vertical clearances are based on IGLD85.

[47/20] [07/22]

*****REVISED*****

DETROIT RIVER – MI – Belle Island – Chart 14848

From March 1, 2023, through **October 31, 2023**, between the hours of 0700 and 1900, Monday through Saturday, eight barges 150-feet by 60-feet or smaller will be working under the MacArthur Bridge at Mile 24.0 over the Detroit River. The barge under the navigation span will monitor VHF-FM Channel 16 and will move to accommodate vessels if a 15-minute advance notice is provided. For additional safety the barges will be equipped with flashing yellow lights one meter apart. The green navigation light in the drawspan occupied with equipment will be extinguished.

[37/22] [20/23]

DETROIT RIVER – MI – River Rouge – Chart 14854

On **June 20, 2023**, between the hours of 0900 and 1600 divers will be working under the West Jefferson Avenue Bridge at Mile 1.10 over the River Rouge. Mariners should provide a 15-minute advance notice of arrival to the drawtender to allow divers to move out of the way.

[24/23]

St. Clair River – MI – Pine River – Chart 148

From October 23 through **October 27, 2023**, between the hours of 0800 and 1700 daily, inspectors will be using snooper vehicles at the Craig Memorial Bridge at Mile 3.30 over the Maumee River. The bridge will require a 30-minute advance notice except on Tuesday and Wednesday when a 3-hour advance notice will be required. Mariners should provide the advance notice directly to the drawtender on VHF-FM Marine Channel 16 or by calling 810-329-9420.

[24/23]

LAKE HURON

LAKE HURON - MI – Cheboygan River – Chart 14886

From March 31, 2023, through **July 31, 2023**, Between the hours of 2300 and 0700, daily no drawtender is required to be at the US 23 Highway Bridge, mile 0.9, over the Cheboygan River, part of the Inland Route and the bridge need not open unless a request to open the draw is given at least 2-hours in advance of a vessels intended time of passage through the draw. Mariners should call 231-627-5436 to provide advance notice.

[10/23]

LAKE HURON - MI – Saginaw River – Chart 14867

From April 24 through **September 4, 2023**, the Independence Street Bridge at Mile 3.88 over the Saginaw River will require a 2-hour advance notice for openings. Two barges 80-foot by 40-foot or smaller will be working under the bridge. The barges will move with a 2-hour advance notice. Mariners should provide

advance notice for the bridge or barges by calling 608-425-0171.

[15/23]

*****REVISED*****

LAKE HURON - MI – Saginaw River – Chart 14867

From May 1, through **June 30, 2023**, between the hours of 0700 to 1900, Monday through Saturday, the Liberty Street Bridge at Mile 4.99 over the Saginaw River will require a 2-hour advance notice for openings. Two barges, 40-foot by 40-foot barges will be working under the bridge. The barges will move with a 2-hour advance notice to accommodate vessel traffic. Mariners should provide advance notices by calling 608-425-0171 or email to JDesmet@kraemerNA.com

[17/23] [23/23]

LAKE HURON - MI – Saginaw River – Chart 14867

From December 1, 2023, through **March 31, 2024**, the Independence Street Bridge at Mile 3.88, over the Saginaw River will be secured to masted navigation. Vessels able to pass under the bridge without an opening may do so at any time. Two barges 80-foot by 40-foot or smaller will be working under the bridge. The barges will move with a 2-hour advance notice. Mariners should provide advance notice for the bridge or barges by calling 608-425-0171.

[17/23]

*****PROPOSED RULE*****

DETROIT RIVER – MI – River Rouge – Chart 14854

The Coast Guard has published in the Federal Register (88 FR 29005) a proposal to modify the operations of all movable bridges over the River Rouge, Detroit, MI to improve communications and establish winter hours. If you have questions on this temporary final rule, call or e-mail Mr. Lee D. Soule, Bridge Management Specialist, Ninth Coast Guard District; telephone 216-902-6085, e-mail Lee.D.Soule@uscg.mil. We invite your comments on this proposed rulemaking. You may submit comments identified by docket number **USCG-2023-0188** using Federal Decision-Making Portal at <https://www.regulations.gov>. Comments and relate material must reach the Coast Guard on or before **July 5, 2023**.

[19/23]

LAKE HURON - MI – Saginaw River – Chart 14867

On **June 26, 2023**, between the hours of 0700 and 1300 the Lake State Railway Bridge at Mile 3.10 over the Saginaw River will be secured to masted navigation in conjunction with an electric motor replacement. Vessels able to pass under the bridge without an opening may do so at any time.

[23/23]

[STRAITS OF MACKINAC, SAINT MARY'S RIVER AND FALLS](#)

[LAKE MICHIGAN – EAST](#)

*****REVISED*****

LAKE MICHIGAN – MI – Charlevoix Harbor – Chart 14942

From 0700 on January 1, 2024, through 0700 on **March 31, 2024**, the US 31 Bridge Street Bridge, over the Pine River will be secured to masted navigation. Vessels able to pass under the bridge without an opening may do so at any time.

[32/22] [33/22]

LAKE MICHIGAN – MI – Grand Haven – Chart 14933

Between the hours of 2200 to 0200 on **July 1, 2023**, the US 31 Bridge at Mile 2.89 over the Grand River will be secured to masted navigation in conjunction with the city's Fourth of July celebration. Vessels able to pass under the bridge without an opening may do so at any time.

[17/23]

LAKE MICHIGAN – MI – Grand Haven – Chart 14933

Between the hours of 2200 to 0200 on **August 5, 2023**, the US 31 Bridge at Mile 2.89 over the Grand River will be secured to masted navigation in conjunction with the city's Coast Guard Day celebration. Vessels able to pass under the bridge without an opening may do so at any time.

[17/23]

LAKE MICHIGAN – MICHIGAN CITY & INDIANA HARBOR & GARY HARBOR

LAKE MICHIGAN – IN – Michigan City – Chart 14926

On **July 4, 2023**, between the hours of 2145 and 2245 the Franklin Street Bridge at Mile 0.5 over Trail Creek will be secured to masted navigation in conjunction with the City Fourth of July Celebration. Vessels able to pass under the bridge without an opening may do so at any time.

[23/23]

LAKE MICHIGAN – IN – Michigan City – Chart 14926

On **August 5, 2023**, between the hours of 1515 and 1845 the Franklin Street Bridge at Mile 0.5 over Trail Creek will be secured to masted navigation in conjunction with the Great Lakes Grand Prix. Vessels able to pass under the bridge without an opening may do so at any time.

[23/23]

LAKE MICHIGAN – IN – Indiana Harbor Canal – Chart 14929

From June 20 through **June 22, 2023**, between the hours of 0900 to 1500 each day the Elgin, Joliet, and Eastern Railroad Bridge, at Mile 1.89 over the Indiana Harbor Canal will be secured to masted navigation for maintenance. Vessels able to pass under the bridge without an opening may do so at any time.

[23/23]

LAKE MICHIGAN – CALUMET RIVER & LITTLE CALUMET RIVER

LAKE MICHIGAN – IL – Calumet Harbor – Chart 14927

From February 21 through **July 24, 2023**, between the hours of 0700 and 1600 Monday through Friday the 100th Street Bridge at Mile 1.78, over the Calumet River will require a 1-hour advance notice for two leaf openings. Mariners should provide advance notice directly to the drawtender on VHF-FM Marine Channel 16.

[11/23]

CHICAGO RIVER – MAIN RIVER CHANNEL, NORTH BRANCH, NORTH SHORE CHANNEL, AND SOUTH BRANCH AND SOUTH FORK OF SOUTH BRANCH

LAKE MICHIGAN – IL – Chicago Harbor – Chart 14927

From June 1, through **November 1, 2023**, the Dearborn Street Bridge at Mile 1.13 (CORPS MILE 326.1) over the Main Branch of the Chicago River will have one leaf secured to masted navigation and an 80-foot by 20-foot barge under the bridge. The barge will move if a 1-hour advance notice is provided on VHF-FM Marine Radio Channel 16.

[21/23]

CALUMET SAG CHANNEL

LAKE MICHIGAN – IL – Calumet-SAG Channel – Chart 14927

From May 1, through **November 1, 2023**, scaffolding that hangs approximately 6-feet below low steel will be installed under the Sag Highway Bridge at Mile 28.76 (CORPS MILE 304.2) over the Calumet-SAG Channel. [03/23]

CHICAGO SANITARY AND SHIP CANAL, KANKAKEE RIVER & ROCK RIVER

(Lake Michigan to Mile 36.2/291.1)

LAKE MICHIGAN – IL – Chicago Sanitary and Ship Canal - Chart 14927

From June 5 through **June 23, 2023**, between the hours of 0600 and 1800, Monday through Friday a 50-foot by 100-foot barge will be working under the La Grange Road (Justice) Bridges at Mile 17.9 (CORPS MILE 309.4) over the Chicago Sanitary and Ship Canal. The M/V **Meghan B** and barge will move if a 1-hour advance notice is provided on VHF-FM Marine Channel 16. [23/23]

LAKE MICHIGAN – WEST

LAKE MICHIGAN – WI – Racine Harbor – Chart 14925

From December 1, 2023, through **April 1, 2024**, the State Street Bridge at Mile 0.53 over the Root River will be secured to masted navigation and scaffolding that hangs approximately 4-feet below low steel will be installed under the bridge. Vessels that can safely pass under the bridge without an opening may do so at any time. [43/22]

*****REVISED*****

LAKE MICHIGAN – WI – Racine Harbor – Chart 14925

On **July 4, 2023**, between the hours of 0745 and Noon, and again from 2100 to 2230, the Main Street Bridge at mile 0.31 and the State Street Bridge at mile 0.53 over the Root River will be secured to masted navigation in conjunction with the City's Fourth of July Celebrations. Vessels able to pass under the bridges without an opening may do so at any time. [16/23] [24/23]

LAKE MICHIGAN – WI – Racine Harbor – Chart 14925

on **June 17, 2023**, between the hours of 0740 and 1100, the Main Street Bridge at mile 0.31 over the Root River will be secured to masted navigation in conjunction with the Annual Lighthouse Run. Vessels able to pass under the bridge without an opening may do so at any time. [22/23]

LAKE MICHIGAN – WI – Milwaukee Harbor – Chart 14924

from May 1 through **November 30, 2023**, coffer dams will be installed around the piers of the Holton Street Bridge, mile 2.84, over the Milwaukee River that extend into the channel 5-feet on each side for a total reduction in horizontal clearance of 10-feet in total. Two barges 70-feet by 50-feet or smaller will be working under the bridge, A 20-foot channel will be maintained through the project but larger vessel may call 262-366-5121 and request the barges to move with a 2-hour advance notice. [17/23]

LAKE MICHIGAN – MI – Milwaukee Harbor – Chart 14924

On **June 22, 2023** between the hours of 2130 and 0100, all bridges from Mile 0.79 to Mile 1.46 over the Milwaukee River will be secured to recreational masted navigation, except at the discretion of the police department, in conjunction with the Big Bang Fireworks. Vessels able to pass under the bridges without an

opening may do so at any time.

[23/23]

LAKE MICHIGAN – MI – Milwaukee Harbor – Chart 14924

From June 23 through **July 8, 2023**, between the hours of 2300 to 0100, Thursday through Saturday and including Monday July 3, 2023, all bridges from Mile 0.79 to Mile 1.46 over the Milwaukee River will be secured to recreational masted navigation, except at the discretion of the police department, in conjunction with Summer Fest and the Fourth of July celebrations. Vessels able to pass under the bridges without an opening may do so at any time.

[23/23]

LAKE MICHIGAN – MI – Milwaukee Harbor – Chart 14924

On **July 25, 2023**, between the hours of 0800 and 1030, the State Street Bridge at Mile 1.79 over the Milwaukee River will be secured to masted navigation. Vessels able to pass under the bridge without an opening may do so at any time.

[23/23]

LAKE MICHIGAN – WI – Racine Harbor – Chart 14925

from July 5 through **July 7, 2023**, between the hours of 1000 and 1400, each day the Main Street Bridge at Mile 0.31 and the State Street Bridge at Mile 0.53 both over the Root River will require a 15-minute advance notice for openings while divers inspect the underwater portion of the bridge. Mariners should provide advance notice directly to the drawtender.

[24/23]

LAKE MICHIGAN – Sturgeon Bay Ship Canal – Green Bay – Fox River – Wolf River

*****REVISED*****

LAKE MICHIGAN – WI – Fox River – Chart 14972

From April 1, 2023, through **September 1, 2023**, scaffolding that hangs approximately 3-feet below low steel will be installed under the Tower Driver / Leo Figaro Bridge at Mile 0.41 over the Fox River.

[11/22] [11/23]

LAKE MICHIGAN – WI – Fox River – Chart 14972

On **August 20, 2023**, between the hours of 0615 the Racine Street Bridge at Mile 37.91 and the Main Street Bridge at Mile 55.97 over the Fox River will be secured to masted navigation in conjunction with the Race the Lake Marathon. Vessels able to pass under the bridge without an opening may do so at any time.

[41/22]

LAKE MICHIGAN – WI – Fox River – Chart 14972

From 1300 to 2330 on **July 4, 2023**, the Ray Nitschke Bridge at Mile 1.58 over the Fox River will be secured to masted navigation in conjunction with the City of Green Bay's 4th of July Fireworks. Vessels able to pass under the bridge without an opening may do so at any time.

[02/23]

LAKE MICHIGAN – WI – Fox River – Chart 14916

On **September 30, 2023**, between the hours of 0800 and 1000, the Racine Street Bridge at Mile 37.91 over the Fox River will be closed to masted navigation in conjunction with the 43rd Annual Grunski Runski Marathon. Vessels able to pass under the bridge without an opening may do so at any time.

[20/23]

LAKE MICHIGAN – WI – Fox River – Chart 14916

From June 19 through **June 23, 2023**, between the hours of 0500 and 1800 each day the Bart Starr Memorial Bridge at mile 1.81 over the Fox River will be secured to masted navigation for maintenance. Vessels able to

pass under the bridge without an opening may do so at any time.

[22/23]

LAKE SUPERIOR

LAKE SUPERIOR – MN – Duluth Superior Harbor – Chart 14975

On **July 4, 2022**, between the hours of 1900 to 2330, the Duluth Ship Canal Bridge at mile 0.24 over the Duluth Ship Canal and the Minnesota Slip Bridge at the entrance to Minnesota Slip will be secured to masted navigation. Vessels able to pass under the bridge without an opening may do so at any time.

[08/23]

LAKE SUPERIOR – MI – Keweenaw Waterway – Chart 14972

From April 15 through **August 19, 2023**, between the hours of 7 a.m. and 7 p.m. Monday through Friday, less Federal Holidays, the US 41 Bridge mile 16 over the Keweenaw Waterway, shall open on signal from five minutes before to five minutes after the hour and half hour for vessels. Documented vessels over 300-feet shall not be held at the bridge but will be passed as soon as possible. Between midnight and 4 a.m. daily, the draw shall be placed in the intermediate position and open on signal if at least 2 hours' notice is given.

[15/23]

LAKE SUPERIOR – MI – Keweenaw Waterway – Chart 14972

On **June 16, 2023**, between the hours of 1845 and 2100 the US 41 Bridge mile 16 over the Keweenaw Waterway will be secured in the intermediate position in conjunction with the Bridgefest Parade. Vessels able to pass under the bridge without an opening may do so at any time.

[23/23]

LAKE SUPERIOR – MN – Duluth Superior Harbor – Chart 14975

from July 31 through **August 4, 2023**, between the hours of 0700 to 1700, Monday through Friday, inspectors will utilize snoopers trucks under the Bong Bridge at mile 5.20 over the St. Louis Bay and River. Spotters will warn of approaching vessels and will move the man lift to allow vessels to pass.

[16/23]

RAINY LAKE, RAINY RIVER, LAKE OF THE WOODS, WISCONSIN RIVER, MISSISSIPPI RIVER, & RED RIVER OF THE NORTH

*****MEETINGS*****

There is a Microsoft Teams meeting with the US Coast Guard, Mariners, and Bridge Owners being held at the end of every month, and **YOU** are welcome to join in.

The last meeting was May 24th, and **the next meeting will be on June 28th at 1pm Eastern Time.**

Join on your computer or mobile app

[Click here to join the meeting](#)

Or call in (audio only)

[+1 410-874-6742,,515305017#](#)

Phone Conference ID: 515 305 017#

(Revised 04/23) NINTH DISTRICT DRAWBRIDGE SIGNALS OR OPERATIONAL DELAYS FORM

TO: Commander (dpb)
Ninth Coast Guard District
1240 E. 9th Street – Room 2047b
Cleveland, Ohio 44199-2060
Phone: (216) 902-6087
Fax: (216) 902-6088
E-Mail: William.B.Stanifer@uscg.mil, Lee.D.Soule@uscg.mil, and Michael.O.Walker2@uscg.mil

DATE: _____
NOTE: Reports of Delay will be processed only when all items are fully addressed and reports submitted within 15 days of reported delay / difficulty. Attach additional sheets if necessary.

CONFIDENTIALITY: Please check here if you wish to keep names of vessels and persons confidential

1. DATE OF DELAY: _____ 2. VESSEL NAME: _____ 3. INBOUND OUTBOUND

(***NOTE: You must provide the following from Coast Pilot 6.***)

4. BRIDGE NAME _____ 5. WATERWAY _____

6. MILE MARKER _____

7. WHAT TIME DID YOU ARRIVE AT THE BRIDGE? _____ 8. DID YOU SIGNAL FOR AN OPENING AT THAT TIME? Y N

9. HOW DID YOU SIGNAL? Sound signal (Whistle, horn, megaphone, hailer, etc.) _____

(Check all that apply) Visual signal (Flag or Light) _____

Radio telephone (Specify Frequency) _____

10. WHEN DID THE BRIDGE REPLY? _____ 11. WHAT DID THE DRAWTENDER SAY? _____

12. DID YOU COMMUNICATE WITH THE BRIDGE AFTER YOUR ARRIVAL? PLEASE PROVIDE DETAILS INCLUDING TIMES, WHAT YOU SAID, AND WHAT THE BRIDGE SAID? _____

13. WHAT TIME DID THE BRIDGE OPEN? _____ 14. WHAT TIME DID YOU START THROUGH? _____

15. WHAT TIME DID YOU CLEAR? _____ 16. WHAT ACTIONS DID YOU TAKE WHILE YOU WAITED FOR THE BRIDGE TO OPEN (e.g. tie up, hold position, use thrusters, return to dock)? _____

17. DESCRIBE ANY WEATHER OR WATER CONDITIONS THAT AFFECTED MANUEVERABILITY WHILE YOU WAITED? _____

18. DESCRIBE WHETHER ANY PEDESTRIANS, VEHICLES, OR TRAINS WERE STOPPED ON THE BRIDGE OR CROSSING THE BRIDGE? PROVIDE AS MUCH DETAIL AS POSSIBLE. _____

19. PROVIDE ANY ADDITIONAL INFORMATION YOU THINK WOULD BE HELPFUL? _____

20. YOUR NAME, E-MAIL, PHONE NUMBER, AND ADDRESS: _____

SIGNATURE OF REPORTING SOURCE



MICHIGAN DEPARTMENT OF NATURAL RESOURCES

INTEROFFICE COMMUNICATION

08 May 2023

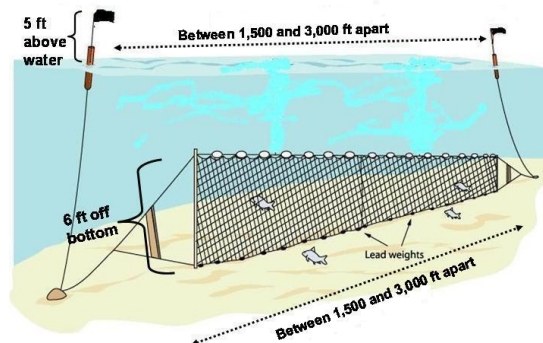
TO: All Mariners on Lake Superior

FROM: Shawn P. Sitar, Fisheries Research Biologist, Marquette Fisheries Research Station

SUBJECT: R/V Lake Char operations in Lake Superior, May-June 2023

This is a note to inform you that we will be conducting our spring survey, deepwater survey, Big Reef survey for lake trout using gill nets in Lake Superior starting 08 May and completing by 30 June.

In these surveys, we use bottom set gill nets that range between 1,500 and 3,000 ft long, and they stand about 6 feet from the bottom and are set overnight. Our spring sampling stations are generally 80 to 250 deep and within a few miles from shore. The Big Reef survey will be more than 25 miles offshore. Our nets are marked with black flagged buoys that are labeled with our agency identification.



We will be conducting our surveys in the following areas of Lake Superior: west of Keweenaw Peninsula in the Ontonagon and upper entry regions; around Isle Royale, outer Keweenaw Bay from Bete Grise to the Huron Islands; Big Bay; Marquette; Au Train, Munising, Grand Marais, and Big Reef.

Attached is a general schedule and coordinates for our nets for the lake trout surveys. Please inform all pertinent personnel of our schedule. Please note that we can be reached via 800 MHz Radios on our primary

radio channel on Zone B, FIMARQT, or via marine radio channel 16. Our radio call sign is *R/V Lake Char*. We can also be reached on the boat via cell phone number 906-458-6925.

If you have any questions regarding our sampling schedule, please feel free to contact me by e-mail at sitars@michigan.gov or by cell phone at (906)-235-1581. Thank you for your cooperation.

Attachment

CC:

Ed Baker, Station Manager, MFRS, Fisheries Division

Tom Gorenflo, CORA

Evelyn Ravindran, Natural Resources Director, KBIC

Bill Mattes, Fisheries Biologist, GLIFWC

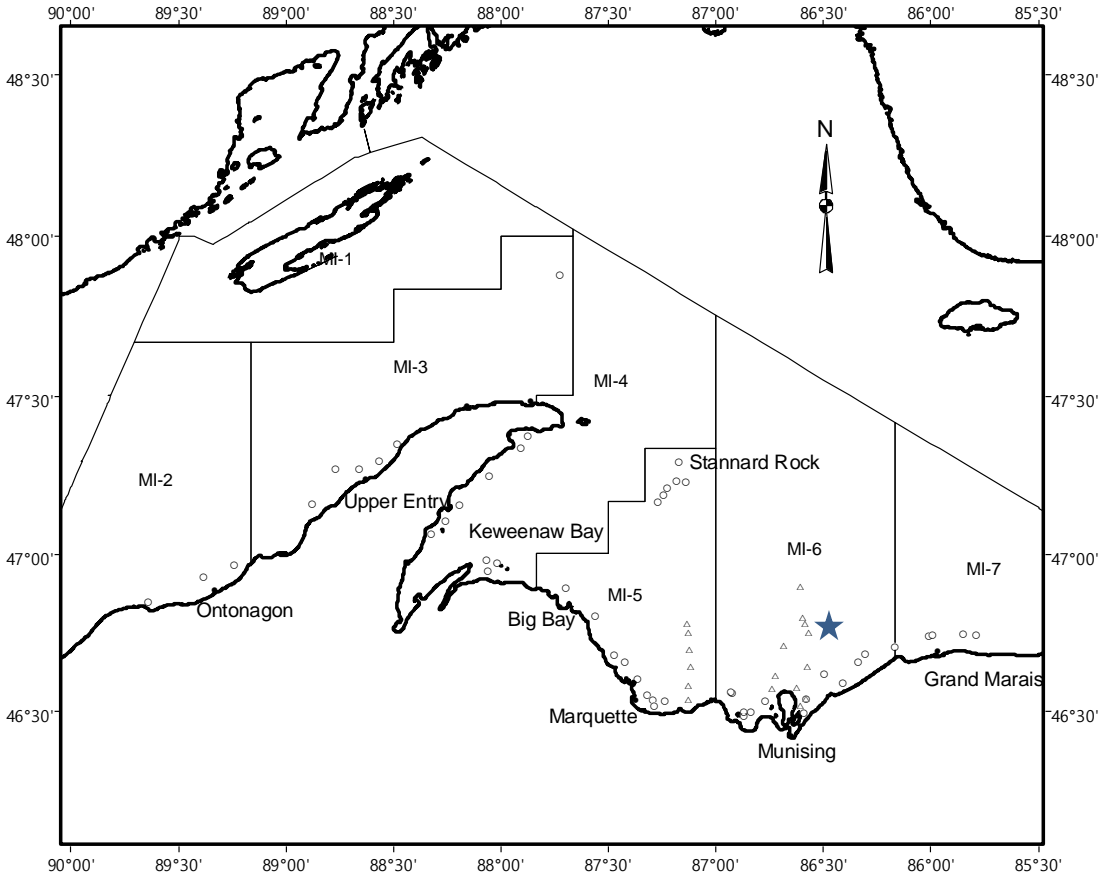
Paul Ripple, Fisheries Biologist, BMIC

Mark Brouder, Project Leader, Ashland FRO, USFWS

Mark Vinson, Station head, USGS-Ashland

USCG District 9 LNM

2023 spring and Big Reef lake trout survey schedule for Marquette Fisheries Research Station (MFRS), Fisheries Division, Michigan Department of Natural Resources.



Research Vessel Lake Char, MIDNR spring (circle) and Big Reef (star) lake trout survey stations.

2023 R/V Lake Char lake trout survey schedule for Marquette Fisheries Research Station (MFRS), Michigan Department of Natural Resources.

Dates			Station	Site	Latitude	Longitude
5/8	-	05/17/2022	550	Marquette Beach-Thill	46 31.06 ' N	87 16.77 ' W
5/8	-	05/17/2022	552	Shot Point-Thill	46 31.93 ' N	87 13.76 ' W
5/9	-	05/18/2022	609	Table Top A	46 29 ' N	86 52 ' W
5/9	-	05/18/2022	610	Au Train Island-East	46 30 ' N	86 52 ' W
5/9	-	05/19/2022	614	Au Train Island-Brey	46 33.69 ' N	86 55.3 ' W
5/9	-	05/19/2022	614.1	Table Top	46 33.79 ' N	86 55.49 ' W
5/10	-	05/19/2022	612	Au Train Point-Brey, VLS	46 29.95 ' N	86 49.75 ' W
5/10	-	05/20/2022	629	Wood Island-VLS	46 32 ' N	86 46 ' W
5/11	-	05/20/2022	651	Trout Reef A-Brey (south)	46 29.69 ' N	86 35.09 ' W
5/11	-	05/20/2022	652	Trout Reef B-Brey (north)/ FAT 6-2	46 32.51 ' N	86 34.33 ' W
5/11	-	05/24/2022	667	Portal Reef-VLS	46 37.28 ' N	86 29.39 ' W
5/15	-	05/24/2022	710	Au Sable Point (site 1)	46 42.34 ' N	86 9.74 ' W
5/15	-	05/24/2022	730	Grand Marais (site 3)	46 44.48 ' N	86 0.22 ' W
5/16	-	05/25/2022	731	Grand Marais (site 4)	46 44.68 ' N	85 59.08 ' W
5/16	-	05/25/2022	734	Perry's Landing (site 6)	46 44.8 ' N	85 50.66 ' W
5/16	-	05/25/2022	735	Perry's Landing (site 7)	46 44.57 ' N	85 46.88 ' W
5/17	-	05/26/2022	680	Beaver Beach-VLS	46 35.32 ' N	86 24.12 ' W
5/17	-	05/26/2022	683	Beaver Hump B-Brey	46 39.55 ' N	86 19.86 ' W
5/17	-	05/26/2022	685	Beaver Hump C-Brey	46 40.95 ' N	86 17.8 ' W
5/18	-	06/01/2022	532	Marquette-Thill B	46 40.76 ' N	87 28.1 ' W
5/18	-	06/01/2022	535	Marquette-Thill A	46 39.41 ' N	87 24.96 ' W
5/22	-	06/02/2022	544	White Rocks-Thill	46 36.3 ' N	87 21.53 ' W
5/22	-	06/02/2022	547	Big Garlic-Thill	46 33.17 ' N	87 18.9 ' W
5/22	-	06/02/2022	548	Little Presque Isle North-Thill	46 32.25 ' N	87 17.13 ' W
5/23	-	06/07/2022	509	Big Bay (IN)-Thill	46 51.38 ' N	87 43.25 ' W
5/23	-	06/07/2022	513	Big Bay (OUT)-Thill	46 53.77 ' N	87 41.69 ' W
5/23	-	06/07/2022	522	Yellow Dog Point	46 48.23 ' N	87 33.38 ' W
5/24	-	06/08/2022	470	Pt. Abbaye/Huron Islands	46 59.01 ' N	88 3.51 ' W
5/24	-	06/08/2022	475	Lighthouse Point (Huron Islands)	46 56.87 ' N	88 3.14 ' W
5/24	-	06/09/2022	480	Point Abbaye (large mesh)	46 58.47 ' N	88 0.59 ' W
5/25	-	06/09/2022	413	Bare Bluff (Bete Grise)	47 22.61 ' N	87 52.01 ' W
5/25	-	06/09/2022	415	Point Isabelle (South Point)	47 20.39 ' N	87 53.93 ' W
5/25	-	06/10/2022	430	Black Point (in)	47 15.04 ' N	88 3.05 ' W
5/30	-	06/10/2022	440	Grand Traverse Bay	47 9.37 ' N	88 11.35 ' W
5/30	-	06/10/2022	452	Traverse Island (west)/Red Rock	47 4.07 ' N	88 19.15 ' W
5/30	-	06/14/2022	460	Little Traverse Bay	47 6.49 ' N	88 15.21 ' W
5/31	-	06/14/2022	344	Hills Creek	47 17.9 ' N	88 33.65 ' W
5/31	-	06/15/2022	350	Calumet Waterworks-Peterson	47 21.05 ' N	88 28.62 ' W
6/1	-	06/15/2022	320	North/Upper Entry (Wiita)	47 9.53 ' N	88 52.25 ' W
6/1	-	06/15/2022	329	North/Upper Entry (NOTRY)	47 17.25 ' N	88 45.8 ' W
6/1	-	06/15/2022	340	Freda (out) (graded mesh)	47 16.32 ' N	88 39.22 ' W
6/19	-	06/23/2023	655/657	Big Reef	46 ° 48.5 ' N	86 ° 32.5 ' W

Waterway Analysis and Management System Survey

Name of Waterway: _____

User Information

___ Commercial User

___ Recreational User

Number of years in the maritime industry or number of years using this waterway: _____

Number of transits in the waterway per year: _____

Number of night transits of waterway: _____

Seasonal Dates: Start: _____ End: _____

Name of Vessel: _____

Vessel Description: _____

Length: _____ Beam: _____ Draft: _____ Gross Tons: _____

Net Tons: _____ Bridge Height of Eye: _____

Cargo Carried: _____

Navigational tools used: (ECDIS/ECPINS, GPS, DGPS, VISUAL, RADAR) _____

What area do you believe is the most dangerous or difficult to navigate: _____

Are the floating aids to navigation (lighted and unlighted buoys) adequate for this waterway:

Are the fixed aids to navigation (lights, ranges, lighthouses, daybeacons) adequate for this waterway: _____

Are the year round and lighted ice buoys adequate: _____

Are there buoys that you feel should be changed to fixed aids to navigation?

Are there any buoys that could be eliminated from this waterway: _____

Are there any buoys with sound signals that the bell or gong could be removed:

Are there any areas that require additional aids to navigation in this waterway:

Do the nautical charts, Coast Pilot, and Light List meet your needs for this waterway: _____

Are there private Aids to Navigation that you find misleading or interfere with the current system in the waterway:

Any addition comments on this waterway: _____

Thank you for taking time to comment on this waterway. Your input as a mariner very valuable to the U. S. Coast Guard in evaluating waterways to make them safe and as easily navigable as possible. Please feel free to contact D09-DG-District-D9-ATON-Support@uscg.mil with any other questions or concerns about any aids to navigation in the Great Lakes. The survey can be mailed to:

Commander (dpw-2)
Ninth Coast Guard District
1240 East Ninth Street
Cleveland, Ohio 44199
