



U.S. Department of Homeland Security
United States Coast Guard

LOCAL NOTICE TO MARINERS

District: 9

Week: 15/24

Issued by: Commander (dpw)
Ninth Coast Guard District
1240 East Ninth Street,
Cleveland, OH 44199-2060
Telephone: (571) 608-1683

Direct questions about this LNM to the above address.

All distances in this publication are STATUTE MILES unless otherwise noted.\*

\*District Nine Internet Address\* https://www.atlanticarea.uscg.mil/Our-Organization/District-9/

\*District Nine Local Notice to Mariners email Address\* D09-DG-District-D9-LocalNoticetoMariners@uscg.mil

\*\* Navigation Information Service watchstander, 24 hours a day at (703) 313-5900 \*\* \*\*Internet Address\*\* https://www.navcen.uscg.gov/

Light List Reference: Commandant Publication P16502.7, VOL VII, 2023 Edition

Coast Pilot Reference: 2023 U.S. Coast Pilot 6 Great Lakes 53rd Edition

Coast Pilots, along with corrections are available at: https://nauticalcharts.noaa.gov/publications/coast-pilot/index.html

The Local Notice to Mariners is available on the Internet at https://www.navcen.uscg.gov/local-notice-to-mariners-by-cg-district You will also have links to other government agencies- web pages including the US Army Corps of Engineers and the National Ocean Service.

REPORT DISCREPANCIES IN AIDS TO NAVIGATION TO THE NEAREST COAST GUARD UNIT

The Ninth District and all Sector offices for their areas of responsibility issue a BROADCAST NOTICE TO MARINERS.

The following Broadcast Notice to Mariners have been incorporated into this week's Local Notice to Mariners:9

Sector Eastern Great Lakes - EGL017-24 through EGL023-24

Ninth District - C022-24 through C027-24

Sector Detroit, MI - D019-24 through D020-24

Sector Lake Michigan, WI - M048-24 through M054-24

Sector Northern Great Lakes- NGL035-24 through NGL035-24

The United States Coast Guard Navigation Information Service (NIS), operated by the USCG Navigation Center, is staffed 24 hours a day, 7 days a week. The NIS provides information on the current operational status, effective policies, and general information for GPS and DGPS. The

NIS also disseminates Safety Broadcasts (BNM), Local Notice to Mariners (LNM), and the latest Notice Advisory to Navstar Users (NANU). NANU notices can be obtained via email subscription through the USCG Navigation Center website: https://cgls.uscg.mil/mailman/listinfo/nanu. In addition,

the NIS investigates all reports of degradation or loss of GPS, DGPS or AIS service. Users are encouraged to report all degradation or loss of radio navigation services to the NIS via any of the following: Phone: (703) 313-5900, mail to: webmaster@smtp.navcen.uscg.mil, or on the internet at: https://www.navcen.uscg.gov

ABBREVIATIONS

A through H

ADRIFT - Buoy Adrift
AICW - Atlantic Intracoastal Waterway
AI - Alternating
B - Buoy
BKW - Breakwater
bl - Blast
BNM - Broadcast Notice to Mariner
bu - Blue
C - Canadian
CHAN - Channel
CGD - Coast Guard District
C/O - Cut Off
CONT - Contour
CRK - Creek
CONST - Construction
DAYMK/Daymk - Daymark
DBN/Dbn - Daybeacon
DBD/DAYBD - Dayboard
DEFAC - Defaced
DEST - Destroyed

I through O

I - Interrupted
ICW - Intracoastal Waterway
IMCH - Improper Characteristic
INL - Inlet
INOP - Not Operating
INT - Intensity
ISL - Islet
Iso - Isophase
kHz - Kilohertz
LAT - Latitude
LB - Lighted Buoy
LBB - Lighted Bell Buoy
LHB - Lighted Horn Buoy
LGB - Lighted Gong Buoy
LONG - Longitude
LNM - Local Notice to Mariners
LT - Light
LT CONT - Light Continuous
LTR - Letter
LWB - Lighted Whistle Buoy

P through Z

PRIV - Private Aid
Q - Quick
R - Red
RACON - Radar Transponder Beacon
Ra ref - Radar reflector
RBN - Radio Beacon
REBUILT - Aid Rebuilt
RECOVERED - Aid Recovered
RED - Red Buoy
REFL - Reflective
RRL - Range Rear Light
RELIGHTED - Aid Relit
RELOC - Relocated
RESET ON STATION - Aid Reset on Station
RFL - Range Front Light
RIV - River
RRASS - Remote Radio Activated Sound Signal
s - seconds
SEC - Section
SHL - Shoaling

DISCON - Discontinued  
DMGD/DAMGD - Damaged  
ec - eclipse  
EST - Established Aid  
ev - every  
EVAL - Evaluation  
EXT - Extinguished  
F - Fixed  
fl - flash  
Fl - Flashing  
G - Green  
GIWW - Gulf Intracoastal Waterway  
HAZ - Hazard to Navigation  
HBR - Harbor  
HOR - Horizontal Clearance  
HT - Height

LWP - Left Watching Properly  
MHz - Megahertz  
MISS/MSNG - Missing  
Mo - Morse Code  
MRASS - Marine Radio Activated Sound Signal  
MSLD - Misleading  
N/C - Not Charted  
NGA - National Geospatial-Intelligence Agency  
NO/NUM - Number  
NOS - National Ocean Service  
NW - Notice Writer  
OBSCU - Obscured  
OBST - Obstruction  
OBSTR - Obstruction  
Oc - Occulting  
ODAS - Anchored Oceanographic Data Buoy

si - silent  
SIG - Signal  
SND - Sound  
SPM - Single Point Mooring Buoy  
SS - Sound Signal  
STA - Station  
STRUCT - Structure  
St M - Statute Mile  
TEMP - Temporary Aid Change  
TMK - Topmark  
TRLB - Temporarily Replaced by Lighted Buoy  
TRLT - Temporarily Replaced by Light  
TRUB - Temporarily Replaced by Unlighted Buoy  
USACE - Army Corps of Engineers  
W - White  
Y - Yellow

**Additional Abbreviations Specific to this LNM Edition:**

LIB - Lighted Ice Buoy

---

**SECTION I - SPECIAL NOTICES**

This section contains information of special concern to the Mariner.

---

**NAVIGATION CENTER WEBSITE FEEDBACK SURVEY**

We are eager to understand the primary reason for your visit to the Navigation Center website and how you use it, whether for recreational boating, professional purposes, data requests, educational reasons, or otherwise. Your feedback on the website's ease of use, ability to find information, and if it's your primary source for navigation-related information is crucial. We are committed to improving your experience and welcome any suggestions to enhance the site's usability, information accessibility, and overall efficiency. Your insights are invaluable in helping us better meet your navigation needs.

Survey: Navigation Center Website Feedback Survey ([surveymonkey.com](https://www.surveymonkey.com))

LNM: 15/24

**Cancellation of NOAA Paper and Raster Nautical Charts**

The National Oceanic and Atmospheric Administration (NOAA) is undertaking a multi-year program to end production and maintenance of its suite of over 1,000 traditional paper nautical charts and all associated raster chart products and services, including: Print-on-Demand (POD) paper nautical charts, Full-size chart PDF files, BookletChart™ PDF files, NOAA raster navigational charts (NOAA RNC®), the NOAA RNC tile service, and the online RNC viewer.

Six months notice of the intent to cancel a specific chart is provided in a "Last Edition" notice. The final cancellation of a chart is made in a "Canceled" notice. Both types of notices will appear in LNM Section IV, "Chart Correction." A comprehensive list of all canceled NOAA charts is available at: <http://www.charts.noaa.gov/MCD/Dole.shtml>.

Traditional paper nautical chart production is ending to enable the creation and maintenance of larger scale, more up-to-date, higher quality coverage of NOAA's electronic navigational chart (NOAA ENC®) product. This will significantly enhance the amount of charted detail available to mariners. More information about NOAA's program to sunset traditional paper charts is on the NOAA Coast Survey website at: <https://nauticalcharts.noaa.gov/charts/farewell-to-traditional-nautical-charts.html>

An online NOAA Custom Chart application at: <https://devgis.charttools.noaa.gov/pod> is available to create chart images from ENC data, which may then be printed. Notices to Mariners will not be issued for NOAA Custom Charts.

LNM: 04/20

**SAFETY NOTICE - NAVIGATIONAL RANGE AND SECTOR LIGHTS ON ELECTRONIC CHARTS**

The U.S. Coast Guard has become aware that the Range and Sector Light Characteristic labels are not displayed on Electronic Navigational Charts (ENCs) when used in an Electronic Chart Display and Information System (ECDIS) due to limitations of the S-52 ECDIS display specification. Mariners may query the ENC data directly within ECDIS or refer to the Light List for complete information on Range and Sector Light Characteristics.

LNM: 39/22

**PUBLICATION OF NVIC 03-23 GUIDANCE ON NAVIGATIONAL SAFETY IN AND AROUND OFFSHORE RENEWABLE ENERGY INSTALLATIONS (OREI)**

The Coast Guard has published Navigation and Vessel Inspection Circular (NVIC) 03-23: Guidance on Navigational Safety In and Around Offshore Renewable Energy Installations (OREI) to highlight considerations when planning and undertaking voyages in the vicinity of offshore renewable energy installations (OREI) in U.S. waters. The prudent mariner should review and utilize this NVIC to make an informed risk assessment prior to

navigating within or in the vicinity of an OREI. Important Maritime Safety Information (MSI) relating to OREIs is distributed by Local or Broadcast Notices to Mariners (LNM or BNM) promulgated by Coast Guard Districts. Marine Safety Information Bulletins (MSIB) released by the local Captain of the Port (COTP) may be issued to provide supplemental information. Interested parties should contact the Office of Navigation Systems at CGNAV@uscg.mil with any questions or feedback.

LNM: 47/23

### **MERCHANT MARINER CREDENTIAL**

The U.S. Coast Guard announced a new merchant mariner credential (MMC) set to launch on March 1, 2024. This milestone marks the first comprehensive revision of the mariner credential in nearly a decade and is strategically designed to enhance both quality of service and security within the Marine Transportation System (MTS). U.S. Coast Guard Marine Safety Information Bulletin (MSIB) 01-24, New Merchant Mariner Credential Passport Booklet Replacement, has been posted on the DCO's MSIB Site and announced at the National Maritime Center (CG-NMC) Home Page (uscg.mil). Please visit these resources for more information on the credential.

LNM: 09/24

### **2024 Light List**

2024 Light Lists are available on the USCG Navigation Center's website at:  
<https://www.navcen.uscg.gov/light-list-annual-publication>

Coast Guard Light Lists are a means for communicating aids to navigation information to the maritime public. The last government printed Light Lists were the 2024 editions.

While the Light Lists will no longer be available in government printed form, commercial reproductions may be available for purchase from maritime service providers.

Local Notice to Mariners will continue to advise Light List corrections and NAVCEN will continue to publish a compilation of corrections.

Complete versions of the 2024 Light Lists are updated weekly on the NAVCEN website and mariners should download applicable copies and updates as needed at: <https://www.navcen.uscg.gov/weekly-light-lists>

A summary of 2024 Light List corrections are available at: <https://www.navcen.uscg.gov/light-list-summary-of-corrections>

Guidance for use of electronic navigation publications onboard U.S. vessels can be found at:  
[http://www.uscg.mil/hq/cgcv/cvc/policy/policy\\_letters/543/CG-543\\_pol10-05.pdf](http://www.uscg.mil/hq/cgcv/cvc/policy/policy_letters/543/CG-543_pol10-05.pdf)

If the links above do not work, you should either copy and paste the links into your web browser or follow the LNM links from the Navigation Center LNM page at <https://www.navcen.uscg.gov/local-notice-to-mariners-by-cg-district>.

The Local Notice to Mariners, Light List, and Summary of Corrections are in Portable Document Format (PDF) and viewing them requires a PDF reader. PDF readers are readily available on the internet, generally free of charge.

If you have questions regarding this message, please contact the Navigation Center at <https://www.navcen.uscg.gov/report-a-problem> (use "LNMs, Charts, Chart Corrections, or Light Lists" as the subject from the pull down menu).

LNM: 03/24

### **USACE NOTICE TO NAVIGATION INTERESTS**

Current Federal Channel conditions, shoaling, and the most recent channel surveys are available at the following Army Corps of Engineers web sites:

Buffalo: <http://www.lrb.usace.army.mil/>  
Detroit: <http://www.lre.usace.army.mil/>  
Chicago: <http://www.lrc.usace.army.mil/>  
Rock Island: <http://www.mvr.usace.army.mil/>  
St. Paul: <https://www.mvp.usace.army.mil/>

LNM: 28/12

### **GREAT LAKES - Great Lakes Water Levels**

See Enclosure 1

The current and four week expected water level table for the Great Lakes, Connecting Channels and the St. Lawrence River, will be published in Enclosure 1 following SECTION VIII - LIGHT LIST CORRECTIONS of the Local Notice to Mariner or by visiting the link below:

<https://www.lre.usace.army.mil/Missions/Great-Lakes-Information/Great-Lakes-Water-Levels/Water-Level-Forecast/Connecting-Channels-Forecast/>

LNM: 32/20

**LAKE ERIE – Fairport Harbor – Chart 14829**

The Coast Guard has established a virtual AIS aid to navigation at the entrance of Fairport Harbor to assist in identifying recent shoaling within the channel. The aid (MMSI: 993682815) is labeled W SHOAL 2 and identifies the encroachment of shoaling on the western side of the channel less than 18.5ft water depth. The aid is for reference only and is positioned based on most recent survey data, and does not account for periodic variations in the position of the shoal. Mariners are urged to use caution while transiting the area.

LNM: 21/23

**LAKE ST. CLAIR - St. Clair Cut-off LB "CO" LLNR 8590**

The Coast Guard will be temporarily deploying a buoy of reduced size at St. Clair Cut-Off Preferred Channel Lighted Buoy "CO" (LLNR 8590) in Lake St. Clair, MI. The visual and operational radar range of the buoy will be reduced. The lighted signal range will remain unchanged. The temporary change is in response to delays in the permanent buoy's off-season refurbishment. Upon completion, the permanent buoy will be redeployed back on station. All mariners are requested to use caution while transiting the area.

LNM: 15/24

**ST. MARYS RIVER - Lake Nicolet To Sault Ste. Marie- Chart 14884**

The U.S. Army Corps of Engineers has commissioned Little Rapids Cut Lighted Ice Buoy 98B (LLNR 14105). The buoy marks the upstream end of the ice boom in place on the eastern side of the St. Marys River. The available channel width for navigation is restricted to 385ft. Due to the channel restrictions, VTS St Marys River directs no meeting or overtaking in Little Rapids Cut from Light 98 (LLNR 14100) to Mission PT Obstruction LT C (LLNR 14145).

LNM: 46/23

**ST. MARYS RIVER - American Canal - Chart 14884**

Northeast Pierhead Light (LLNR 14205) The U. S. Army Corps of Engineers will be relocating this light to the top of their new camera tower. As soon as the position and height of the light's new location is confirmed it will be advertised in Section VIII - Light List Corrections of the LNM.

LNM: 10/21

**LAKE MICHIGAN - Seul Choix Point**

The Coast Guard has received a report of soundings less than charted depth 3.5NM east/southeast of Seul Choix Point at position 45°53'18"N, 085°50'27"W. The area of reduced depth was reported on the east/west Manistique to Lansing Shoal recommended shipping route. Mariners are urged to use caution while transiting the area.

LNM: 06/24

**LAKE MICHIGAN – Muskegon Channel – Chart 14906**

The Coast Guard has established a pair of virtual AIS aids to navigation at the entrance of Muskegon Harbor to assist in identifying recent shoaling within the approaches. V-AIS (MMSI: 993682821) identifies the encroachment of shoaling on the northern side of the channel less than 25ft water depth. Similarly, V-AIS (MMSI: 993682842) identifies shoaling on the south side of the channel less than 25ft. The aids are for reference only and are positioned based on most recent survey data and do not account for periodic variations in the position of the shoaling. Mariners are urged to use caution while transiting the area.

LNM: 24/23

**LAKE SUPERIOR – Keweenaw – Chart 14972**

Keweenaw Upper Entrance West Breakwater Light (LLNR 15115) was reported damaged and swept from its location on the breakwall. The approximately 20' metal tower is submerged in vicinity of the breakwater at an unknown position. All mariners are urged to use caution when transiting the area.

LNM: 12/23

---

---

**SECTION II - DISCREPANCIES**

This section lists all reported and corrected discrepancies related to Aids to Navigation in this edition. A discrepancy is a change in the status of an aid to navigation that differs from what is published or charted.

---

**DISCREPANCIES (FEDERAL AIDS)**

LLNR	Aid Name	Status	Chart No.	BNM Ref.	LNM St	LNM End
490	St. Lawrence Seaway Lighted Buoy 77	LT EXT		EGL018-24	14/24	
<b>835</b>	<b>St. Lawrence Seaway Lighted Buoy 122</b>	<b>LT EXT</b>		<b>EGL022-24</b>	<b>15/24</b>	
<b>960</b>	<b>St. Lawrence Seaway Lighted Buoy 131B</b>	<b>LT EXT</b>		<b>EGL021-24</b>	<b>15/24</b>	
1210	Chippewa Point Directional Light	LT EXT		EGL016-24	14/24	

1420	St. Lawrence Seaway Light 206	LT EXT		EGL007-24	06/24
3760	Ashtabula Harbor Entrance Light 2	REDUCED INT		B235-23	46/23
4575	Moseley Channel Range Rear Light	DAYMK MISSING		D095-23	32/23
7330	West Outer Channel Buoy 8	OFF STA		D005-24	04/24
9710	Russell Island Lighted Buoy 29	LT EXT		D143-23	51/23
11495	Thunder Bay Island Light	LT EXT	14860	D007-24	04/24
13030	Munuscong Channel (Upbound) Junction Light ML	LT EXT/AIS INOP		NGL005-24	02/24
13070	Munuscong Channel (Upbound) Lighted Buoy 9	AIS INOP			05/24
13075	Munuscong Channel (Upbound) Buoy 10	MISSING		NGL022-24	07/24
13125	Sailors Encampment Channel Lighted Buoy 21	AIS INOP			05/24
13475	West Neebish Channel (Downbound) Upper Range Rear Light	DAYMK MISSING			36/23
13645	Sawmill Point Lighted Buoy 22	AIS INOP			05/24
13695	Moon Island Lighted Buoy 13	AIS INOP			05/24
13955	Upper Nicolet Range Front Light	LT EXT		NGL004-24	02/24
13960	Upper Nicolet Range Rear Light	LT EXT/DAYMK MISSING		NGL004-24	26/23
14050	Six Mile Point Range Rear Light	DAYMK MISSING		S079-23	10/21
15115	Keweenaw Upper Entrance West Breakwater Light	STRUCT DEST		S015-23	02/23
15700	Superior Front Channel Range Rear Light	LT EXT		NGL008-24	03/24
16220	Minnesota Channel (Eastern Section) Lighted Buoy 9	MISSING		NGL030-24	11/24
17210	Canoe Channel Daybeacon 8	STRUCT DEST/TRUB			23/22
19790	Chicago Lake Front Northeast Shoal Lighted Buoy 2	RAC INOP		M098-23	20/23
19825	Calumet Harbor Lighted Buoy 7	OFF STA		M038-24	11/24
20430	Kenosha Breakwater Light	REDUCED INT		M123-23	22/23
20480	Racine Reef Light	SS IMCH	14901	M027-24	08/24
21610	Minneapolis Shoal Light	LT EXT	14902	M026-24	08/24
22145	Green Bay Harbor Entrance Channel Lighted Buoy 9	OFF STA			06/24
22180	Green Bay Harbor Entrance Channel Range Front Light	DAYMK DMGD		M327-22	24/21
22185	Green Bay Harbor Entrance Channel Range Rear Light	DAYMK MISSING		M157-23	44/20

**DISCREPANCIES (FEDERAL AIDS) CORRECTED**

LLNR	Aid Name	Status	Chart No.	BNM Ref.	LNM St	LNM End
17750	White Shoal Light	WATCHING PROPERLY	14902		05/24	15/24
18390	Frankfort North Pierhead Light	WATCHING PROPERLY			15/24	15/24

**DISCREPANCIES (PRIVATE AIDS)**

LLNR	Aid Name	Status	Chart No.	BNM Ref.	LNM St	LNM End
------	----------	--------	-----------	----------	--------	---------

None

**DISCREPANCIES (PRIVATE AIDS) CORRECTED**

LLNR	Aid Name	Status	Chart No.	BNM Ref.	LNM St	LNM End
------	----------	--------	-----------	----------	--------	---------

None

**PLATFORM DISCREPANCIES**

Name	Status	Position	BNM Ref.	LNM St	LNM End
------	--------	----------	----------	--------	---------

None

PLATFORM DISCREPANCIES CORRECTED

Name	Status	Position	BNM Ref.	LNM St	LNM End
------	--------	----------	----------	--------	---------

None

SECTION III - TEMPORARY CHANGES and TEMPORARY CHANGES CORRECTED

This section contains temporary changes and corrections to Aids to Navigation for this edition. When charted aids are temporarily relocated for dredging, testing, evaluation, or marking an obstruction, a temporary correction shall be listed in Section IV giving the new position.

TEMPORARY CHANGES

LLNR	Aid Name	Status	Chart No.	BNM Ref.	LNM St	LNM End
2105	Oswego Harbor West Channel Light 2	TRLB	14786		17/19	
2855	Black Rock Canal Light 15	DISCONTINUED			12/24	
8240	William Livingstone Memorial Light	Reduced Intensity			33/21	
9690	Grande Pointe Light 23	TRLT			47/20	
14540	Little Lake Harbor Light 2	DISCONTINUED FOR DREDGING	14961		47/22	
15220	Ontonagon Harbor East Breakwater Light	DISCONTINUED			02/22	
16963	Driftwood Point Light	DISCONTINUED			45/20	

TEMPORARY CHANGES CORRECTED

LLNR	Aid Name	Status	Chart No.	BNM Ref.	LNM St	LNM End
------	----------	--------	-----------	----------	--------	---------

None

PLATFORM TEMPORARY CHANGES

Name	Status	Position	BNM Ref.	LNM St	LNM End
------	--------	----------	----------	--------	---------

None

PLATFORM TEMPORARY CHANGES CORRECTED

Name	Status	Position	BNM Ref.	LNM St	LNM End
------	--------	----------	----------	--------	---------

None

SECTION IV - CHART CORRECTIONS

This section contains corrections to federally and privately maintained Aids to Navigation, as well as NOS corrections.

This section contains corrective actions affecting chart(s). Corrections appear numerically by chart number, and pertain to that chart only. It is up to the mariner to decide which chart(s) are to be corrected. The following example explains individual elements of a typical chart correction.

Chart Number	Chart Edition	Edition Date	Last Local Notice to Mariners	Horizontal Datum Reference	Source of Correction	Current Local Notice to Mariners
12327	91st Ed.	19-APR-97	Last LNM: 26/97	NAD 83		27/97
Chart Title: NY-NJ-NEW YORK HARBOR - RARITAN RIVER						
Main Panel 2245 NEW YORK HARBOR						
(Temp) ADD	NATIONAL DOCK CHANNEL BUOY 3				CGD01	at 40-41-09.001N 074-02-48.001W
Corrective Action	Green can	Object of Corrective Action			Position	

(Temp) indicates that the chart correction action is temporary in nature. Courses and bearings are given in degrees clockwise from 000 true. Bearings of light sectors are toward the light from seaward. The nominal range of lights is expressed in nautical miles (NM) unless otherwise noted.

**14961**      **13th Ed.**      **01-FEB-16**      **Last LNM: 36/19**      **NAD 83**      **15/24**  
 Chart Title: **Lake Superior (Mercator Projection)**

ADD Duluth LSNE Water Quality Buoy 1  
Yellow  
FI Y 4s

CGD09  
at 46-42-21.090N

091-59-05.000W

## SECTION V - ADVANCE NOTICES

This section contains advance notice of approved projects, changes to aids to navigation, or upcoming temporary changes such as dredging, etc. Mariners are advised to use caution while transiting these areas.

### SUMMARY OF ADVANCED APPROVED PROJECTS

#### Approved Project(s)

None

#### Project Date

#### Ref. LNM

#### Advance Notice(s)

##### **LAKE ERIE – Detroit – CHART 14854**

The Coast Guard will be changing the operation of the sound signal on Detroit River Light (LLNR 6885) from operating continuously, to Mariner Radio Activated Sound Signal (MRASS) year-round. The sound signal would be activated by keying the microphone five or more times on VHF FM channel 83A / 157.175MHz.

LNM: 50/23

##### **ST CLAIR RIVER - St Clair Flats Canal**

The Coast Guard is permanently establishing three danger buoys within the St. Clair Flats Canal, in the St. Clair River, to assist mariners in marking the partially submerged earthen dike along the southeast edge of the channel. The lighted buoys will be evenly spaced along the dike, extending from the lower point of Seaway Island to the St. Clair Flats Danger Light (LLNR 9575). The buoy characteristics will be white and orange in color and display the text "DANGER ROCKS" across the buoy.

LNM: 46/23

##### **STRAITS OF MACKINAC - Cheboygan River**

The Coast Guard is permanently changing the seasonal operation dates of Cheboygan River Entrance Lighted Buoy 2 (LLNR 11780) to unlighted from Nov 15th to May 1st. The change is in response to the recent installation of a year-round buoy hull and a shift in servicing unit capabilities.

LNM: 02/24

##### **LAKE MICHIGAN - Frankfort Harbor**

The Coast Guard will be establishing the following floating aids to navigation in the inner harbor of Frankfort, MI.

- Frankfort Harbor Buoy 1 (LLNR 18396), 44-37-47.477N, 086-14.28.844W
- Frankfort Harbor Buoy 2 (LLNR 18397), 44-37-44.991N, 086-14.28.777W
- Frankfort Harbor Buoy 3 (LLNR 18398), 44-37-48.323N, 086-14-24.383W
- Frankfort Harbor Buoy 4 (LLNR 18399), 44-37-45.055N, 086-14-24.677W

The lateral buoys will serve as gated pairs to assist mariners in navigating the inner harbor during periods of increased seasonal vessel traffic. The buoys will be seasonal in operation and will be deployed from the 14 of May to the 14 of October annually. Mariners are urged to utilize the channel for transiting and avoid anchoring or obstructing the navigational channel.

LNM: 15/24

##### **LAKE MICHIGAN - Chicago**

The Coast Guard will be permanently disestablishing the RACON signal on Chicago Lake Front Northeast Shoal Lighted Buoy 2 (LLNR 19790). The RACON signal has been permanently replaced by S-AIS (MMSI: 993672228). The physical and lighting characteristics of the buoy will remain unchanged.

LNM: 09/24

##### **LAKE SUPERIOR - Ashland Harbor**

The Coast Guard is permanently disestablishing of the following floating aids to navigation in the Ashland Harbor Western Channel in Ashland, WI.

- Ashland Harbor Lighted Buoy 1 (LLNR 15355)
- Ashland Harbor Buoy 2 (LLNR 15360)
- Ashland Harbor Buoy 3 (LLNR 15365)
- Ashland Harbor Lighted Buoy 4 (LLNR 15370)
- Ashland Harbor Buoy 5 (LLNR 15375)

LNM: 46/23

## SECTION VI - PROPOSED CHANGES

Periodically, the Coast Guard evaluates its system of aids to navigation to determine whether the conditions for which the aids to navigation were established have changed. When changes occur, the feasibility of improving, relocating, replacing, or discontinuing aids are considered. This section contains notice(s) of non-approved, proposed projects open for comment. SPECIAL NOTE: Mariners are requested to respond in writing to the District office unless otherwise noted (see banner page for address).

**PROPOSED WATERWAY PROJECTS OPEN FOR PUBLIC COMMENT**

**Proposed Project(s)**

**Closing**

**Docket No.**

**Ref. LNM**

**None**

**Proposed Change Notice(s)**

**LAKE ERIE - Black Rock Canal - Buffalo NY**

The Coast Guard is considering the permanent disestablishment of Black Rock Canal Light 15 (LLNR 2855) in Buffalo, NY. The light is currently not operational.

LNM: 11/24

**LAKE ERIE - Willis Crib - Erie PA**

The Coast Guard is considering the permanent disestablishment of Willis Crib Isolated Danger Buoy "DW" (LLNR 3492) in Erie, PA. The operation of Willis Crib Dock Light (LLNR 3490) will not change.

LNM: 11/24

**ST. MARYS RIVER - Lime Island**

The Coast Guard is evaluating the reestablishment of the physical Lime Island Traffic Lighted Buoy (LLNR 12915) in the St. Marys River, MI. The physical aid was previously replaced by a V-AIS buoy. The lighted buoy would be seasonal in operation and not replaced by a winter mark. Mariners are encouraged to provide feedback to the Ninth District Aids to Navigation Office regarding the possible redeployment of the lighted buoy, as well as the function of the current V-AIS buoy.

LNM: 14/24

**LAKE SUPERIOR – Duluth Harbor**

The Coast Guard is evaluating the reestablishment of the physical Duluth Harbor Basin Traffic Lighted Buoy (LLNR 15870) in Duluth Harbor, MN. The physical aid was previously replaced by a V-AIS buoy. The lighted buoy would be seasonal in operation and not replaced by a winter mark. Mariners are encouraged to provide feedback to the Ninth District Aids to Navigation Office regarding the possible redeployment of the lighted buoy, as well as the function of the current V-AIS buoy.

LNM: 14/24

**For any comments or questions on these proposed changes please contact:**

The Ninth District Aids to Navigation manager at Brian.D.Hawkins2@uscg.mil or call (206) 815-0913.

LNM: 30/13

---

**SECTION VII - GENERAL**

This section contains information of general concern to the Mariners. Mariners are advised to use caution while transiting these areas.

**Waterways Analysis and Management System**

The Ninth Coast Guard District will be reviewing the following waterways throughout the Great Lakes Region. The study focuses primarily on aids to navigation in the waterway. Public comments are an important tool in this process so that we can provide the adequate markings and the right mix of signals to a waterway for safe navigation. Comments on the below listed waterways can be sent to Brian.D.Hawkins2@uscg.mil or by calling (206) 815-0913. You may also complete the survey attached to the Local Notice to Mariner and either email it or mail it to: Commander (dpw), Ninth Coast Guard District, 1240 East Ninth St., Cleveland, Ohio 44199.

The following waterways will be evaluated for the duration of calendar year 2024 and will be accepting comment until 31Dec2024:

Sackets Harbor  
(LLNR 1755-2024.9)  
Buffalo Harbor/Black Rock Canal  
(LLNR 2665-3360)  
Dunkirk Harbor  
(LLNR 3365-3492)  
Erie Harbor  
(LLNR 3495-3696)  
Conneaut Harbor  
(LLNR 3700-3735)  
Ashtabula Harbor  
(LLNR 3740-3830)  
Fairport Harbor  
(LLNR 3835-3955)

LNM: 11/24

**GREAT LAKES - Marine Events**

Marine events such as races, parades, regattas, and fireworks displays are frequently held in the Great Lakes region. Advance information on specific events is contained in enclosure (2) of this publication. The public is reminded to listen to the local broadcast notice to mariners for the most up-to-date information on a marine event. Mariners are advised that some events may require temporary aids to navigation that are not displayed on a chart or in the Light List, and that they should exercise additional caution while operating in the vicinity of a scheduled marine event.

LNM: 24/13



**LAKE ONTARIO – Little Sodus Bay – Chart 14800**

There is an uncharted breakwall along the shore extending from the west side of Little Sodus Bay entrance to the boat ramp of West Barrier Bar County Park. The breakwall is unmarked and unlit. Visibility of the breakwall may be impacted due to high water. All mariners are requested to transit the area with caution.

LNM: 19/23

**LAKE ONTARIO - Crescent Beach Breakwater**

A series of breakwater barriers are being constructed in Lake Ontario near Crescent Beach, to the east of Sodus Point, NY. Work will be conducted from 01 April 2024, to 30 November 2024 between the hours of 0500 to 2000. Hours are dependent on weather conditions. Construction vessels can be hailed on VHF Channel 16. Inquiries related to the project can be directed to Mr. Glenn Roet at (315) 575-6091. All mariners are advised to stay clear of workboats, barges, floating or submerged equipment in the operational work area between floating navigation buoys detailed below and the shoreline.

- 1 N43°16'21.77817" W76°57'52.20335"
- 2 N43°16'20.93870" W76°57'46.38712"
- 3 N43°16'20.17974" W76°57'41.15137"
- 4 N43°16'19.26083" W76°57'36.11887"
- 5 N43°16'17.99008" W76°57'30.33037"
- 6 N43°16'16.95743" W76°57'25.59050"
- 11 N43°16'26.91154" W76°56'44.64137"
- 12 N43°16'29.34557" W76°56'39.60362"
- 13 N43°16'31.87966" W76°56'34.99165"
- 14 N43°16'33.90231" W76°56'31.32131"

LNM: 14/24

**LAKE ERIE – OH - Ashtabula Harbor – Chart 14836**

A submerged breakwater is being constructed in Ashtabula Harbor, to be connected to the existing East Breakwater. The submerged breakwater will be connected to the East Breakwater at the first angle point of the East Breakwater, as entering the harbor, from the lake. All elevations referenced are referred to Low Water Datum (LWD), IGLD 1985.

The center line of the submerged breakwater approximately follows the same azimuth as the first segment of the East Breakwater, in a south easterly direction, for approximately 1000', then slightly bends to the east for another two segments, for approximately 500'.

The first 1000' (Area "A") has a crest design height of -2.0' with a crest width of 9', and a footprint of approximately 150', with the next 100' transitioning to the dimensions in the next item.

The final 400 (Area "B") has a crest height of -5.0', with a crest width of 9', and a footprint of approximately 50'.

The coordinates, in decimal degrees, are as follows:

- 1. 41.918447801N 80.790362308W
- 2. 41.916367139N 80.788014301W
- 3. 41.916189406N 80.787730327W
- 4. 41.916026216N 80.787424318W
- 5. 41.915640784N 80.786454826W
- 6. 41.916242815N 80.783904852W

All mariners are requested to transit the area with caution.

LNM: 17/23

**LAKE ERIE – Cleveland Harbor – Chart 14839**

Submerged obstructions were reported and confirmed in location 41° 29.380' N, 081° 41.906' W (NAD83) on the Cuyahoga river's left descending bank just east of the Columbus Road Bridge. The USACE completed a hydrological survey on 07 December 2023, which identified four obstructions on the river's bottom believed to be sections of steel corrugated bulkhead originating from a nearby retaining wall. The failed sections settled at the bottom of the river approximately 20 feet into the navigational channel and were measured to be between 18-21 feet from the water's surface. Mariners may contact the Sector Eastern Great Lakes Command Center with any questions by phone at 716-843-9596. The most current USACE Hydrographic Survey data can be found on their website here: Buffalo District Maps and Charts (army.mil). All mariners are requested to transit the area with extreme caution.

LNM: 51/23

**LAKE ERIE- Rocky River**

Shoaling has been reported at the mouth of the Rocky River and throughout its entirety, exceeding 5 feet above low water datum inside the main channel. Of major note, the turning basin located at the mouth of the river on the west bank measures in areas at less than one foot. The latest U.S. Army Corps of Engineers hydrological survey can be found online via links above. All mariners are requested to transit the area with caution.

LNM: 08/24

**LAKE ERIE – Maumee River**

From 08 Jan 2024 to 31 Oct 2025 Mark Haynes Construction will be conducting island restoration of the Clark and Delaware/Horseshoe islands on the Maumee River near river mile 9. Hours of operation are from 0700 to 1700 Monday to Thursday. Two temporary causeways are constructed between the shore and islands that block the side channel at the following locations.

- 1. Immediately downstream of the Maumee River Yacht Club.
- 2. Walbridge Park Boat launch.

Boaters entering the river should follow alternate routes marked by temporary buoys. For more information, please visit:

<https://www.toledoport.org/projects/clark-and-delawarehorseshoe-islands-restoration-projects/>

**LAKE ERIE – Maumee River**

LNM: 08/24

**DETROIT RIVER – Belle Isle Intake**

From 15 Apr 2024 to 15 Oct 2024 Dean Marine and Excavating will be conducting shoreline rehabilitation near the intake point Belle Isle. Hours of operation are from 0600 to 1900 7 days a week. Vessels can be contacted on VHF channels 16 and 79. All mariners are requested to transit the area with caution.

LNM: 14/24

**LAKE HURON – Port Austin**

From 2 Apr 2024 to 1 July 2024 Dean Marine and Excavating will be conducting breakwater extension and dredging in Port Austin. Hours of operation are from 0600 to 1900 7 days a week. Vessels can be contacted on VHF channels 16 and 79. All mariners are requested to transit the area with caution.

LNM: 14/24

**STRAITS OF MACKINAC – Point LaBarbe to McGulpin Point**

From 01 Apr 2024 to 15 May 2024 Kokosing Industrial Inc will be conducting ROV inspection of the new American Transmission Company 138V submarine power cables installed in 2021. Hours of operation are 24 hours a day 7 days a week. Tugs Nancy Anne, Champion, General, WM Boyed and Shirley Ann can be contacted on VHF channels 13 and 16. All mariners are requested to maintain 500 yards away from survey vessels and to transit the area with caution.

LNM: 08/24

**LAKE MICHIGAN – New Buffalo Harbor - Chart 14905**

Shoaling has been reported near the middle of the channel immediately inside the break wall in New Buffalo Harbor, MI. The actual water depth is currently significantly below the charted depth. Mariners are urged to use caution when transiting the area. For further details, contact Sector Lake Michigan at (414) 747-7182 or VHF channel 16.

LNM: 15/22

**LAKE MICHIGAN - Charlevoix**

From 10 Apr 2024 to 15 May 2024 Great Lakes Dock and Material will be conducting maintenance dredging in the Charlevoix Harbor. Hours of operation are 24 hours a day 7 days a week. Dredge Justin Avery and Tug Defiance can be contacted on VHF channels 16 and 18. All mariners are requested to transit the area with caution.

LNM: 15/24

**LAKE MICHIGAN – Port Sheldon – Chart 14932**

Shoaling has been reported near Pigeon Lake at the Port Sheldon entrance. The actual water depth is currently significantly below the charted depth. Mariners are urged to use caution when transiting the area. For further details, contact Sector Lake Michigan at (414) 747-7182 or VHF channel 16.

LNM: 15/23

**LAKE MICHIGAN - Manistee**

Shoaling has been reported in Lake Manistee in position 44-15.41N, 086-18.76W. All mariners are requested to transit the area with caution. For further details, contact Sector Lake Michigan at (414) 747-7182 or VHF channel 16.

LNM: 15/24

**LAKE MICHIGAN - Holland Outer Channel**

From 5 April 2024 to 01 May 2024 The King Company will be conducting hydraulic dredging in the Holland outer channel. Hours of operation are 24 hours a day 7 days a week. Dredge Buxton II can be contacted on VHF channels 16, 18, and 73. . Submerged pipe laying on the lake floor marked by orange round buoys every 500 feet. (2) white buoys will be seen North and South of the dredge. The white buoys indicate winch anchor locations. Disposal area starts South of the breakwater 5,700' and goes 4,500' Northward. Placement will be between the 8' – 12' contour. Main contact will be the Superintendent Joseph Martin. Cell# listed below. During rough seas our pipe pontoon will be floating outside of the channel. It is bright yellow, 25'x8'x6' and has (2) flashing lights on each end that come on at night. Another pipe pontoon that is bright yellow (25'x8'x6') and has (2) flashing lights on each end will be in the disposal area.

LNM: 12/24

**LAKE MICHIGAN – Muskegon Channel – Chart 14906**

The Coast Guard has received reports that the depths at the entrance to Muskegon Lake are less than the charted depths. All mariners are requested to transit the area with caution.

LNM: 17/23

**LAKE MICHIGAN – Muskegon Outer Channel**

From 04 March 2024 to 01 May 2024 the King Company Inc will be conducting hydraulic dredging in the Muskegon outer channel. Hours of operation are 24 hours a day 7 days a week. Dredge Barry J can be contacted on VHF channels 16, 18 and 73. Dredge pipe will be lying on the lake floor, marked by orange round buoys every 500 feet. (2) white buoys will be seen North and South of the dredge. The white buoys indicate winch anchor locations. The disposal area starts south of the pier 2,800' and runs for an additional 3,000'. The primary contact will be the Superintendent Robert Lister. His cell number is listed below. During rough seas, our pipe pontoon will be floating outside of the channel. It is bright yellow, 25'x8'x6' and has (2) flashing lights on each end that come on at night.

LNM: 08/24

**LAKE MICHIGAN – Sheboygan River – Chart 14922**

Shoaling has been reported in entrance of the Sheboygan River in the vicinity of 43-44.928N, 087-42.170W AND 43-44.936N, 087-42.110W. The actual water depth is currently significantly below the charted depth. Mariners are urged to use caution when transiting the area. For further

**LAKE MICHIGAN – Sheboygan River – Chart 14922**  
 details, contact Sector Lake Michigan at (414) 747-7182 or VHF channel 16.

LNM: 24/22

**LAKE MICHIGAN – Sheboygan**

From 1 April 2024 to 1 June 2024 Kokosing Industrial marine division will be placing 02 temporary mooring ball in the Sheboygan Harbor in positions 43°45'5.11"N 087°41'50.6"W AND 43°45'1.51"N 087°41'46.39"W. All mariners are requested to transit the area with caution. For further details, contact Kokosing Industrial at 231-627-5633 or Sector Lake Michigan VIA channel 16.

LNM: 14/24

**LAKE SUPERIOR – Little Lake Harbor – Chart 14961**

Shoaling has been reported in the entrance of Little Lake Harbor exceeding 5 feet above low water datum near the channel edges. Some cross sections of the channel are shoaled nearly the full width to 2 feet or more above low datum. The harbor should not be considered as a functional harbor or refuge. All mariners are requested to transit the area with caution.

LNM: 47/22

**SECTION VIII - LIGHT LIST CORRECTIONS**

An Asterisk \*, indicates the column in which a correction has been made to new information

(1) No.	(2) Name and Location	(3) Position	(4) Characteristic	(5) Height	(6) Range	(7) Structure	(8) Remarks
2128	<i>USSD CDIP 274 Weather Wave Buoy 1</i>	43-30-02.754N 076-32-18.326W	Fl Y 5s				Maintained from Apr.1 to 15/24 Nov.30. Private Aid.
*	*	*	*	*	*	*	*
15620	<i>Duluth LSNE Water Quality Buoy 1</i>	46-42-21.090N 091-59-05.000W	Fl Y 4s				Maintained from Apr.22 15/24 to Oct.31. Private Aid.
*	*	*	*	*	*	*	*
21608	<i>MTU Northern Green Bay Weather Wave Buoy 1</i>	45-32-59.454N 086-53-46.120W	Fl Y 2.5s				Maintained from May.1 to 15/24 Dec.1. Private Aid.

\*

**ENCLOSURES**

**(1) LNM Section I - Special Notices**

1-Great Lakes Water Levels

LNM: 06/22

**(2) LNM Section II - Discrepancies**

N/A

LNM: 19/19

**(3) LNM Section III - Temporary Changes and Temporary Changes Corrected**

N/A

LNM: 19/19

**(4) LNM Section IV - Chart Corrections**

N/A

LNM: 19/19

**(5) LNM Section V - Advance Notices**

N/A

LNM: 19/19

**(6) LNM Section VI - Proposed Changes**

N/A

LNM: 19/19

**(7) LNM Section VII - General**

1-Marine Events

2-Current Ninth District Bridge Maintenance/Activities

3-Waterway Analysis and Management System Survey

LNM: 19/19

**(8) LNM Section VIII - Light List Corrections**

N/A

LNM: 19/19

---

J. P. Hickey, RADM  
U. S. Coast Guard  
Commander, Ninth Coast Guard District

## GREAT LAKES, CONNECTING CHANNELS AND ST. LAWRENCE RIVER WATER LEVELS AND DEPTHS

Expected water levels on the Great Lakes, Connecting Channels and the St. Lawrence River are given in inches above (+,0) or below (-,0) Low-Water Datum (LWD,0). LWD is a plane of reference on a navigation chart, also known as Chart Datum. LWD elevations shown below are given in International Great Lakes Datum, 1985 (IGLD 1985,0).

	Forecast Point	Low Water Datum IGLD 1985	Expected Levels (inches above or below Low Water Datum,0)				
			Current	Week 1	Week 2	Week 3	Week 4
			5-Apr	12-Apr	19-Apr	26-Apr	3-May
<b>GREAT LAKES</b>							
Lake Ontario		243.3	24	25	27	28	30
Lake Erie		569.2	38	38	39	39	40
Lake St. Clair		572.3	32	32	33	34	35
Lake Michigan-Huron		577.5	15	16	16	17	18
Lake Superior		601.1	1	1	2	2	3
<b>ST. LAWRENCE RIVER</b>							
Above Long Sault Dam	0	237.9	11	13	14	15	17
Above Iroquois Dam	1	240.3	7	10	11	12	15
Ogdensburg	2	242.4	13	15	17	18	21
Alexandria Bay	2.1	243.0	16	17	19	20	22
Head of river at Cape Vincent	3	243.3	24	25	27	28	30
<b>DETROIT RIVER</b>							
Lake Erie at Pelee Passage	4	569.2	38	38	39	39	40
Mouth of River at Gibraltar	5	569.5	38	38	39	39	40
Fort Wayne	5.1	571.1	36	37	38	39	40
Head of River above Belle Isle	6	572.0	33	34	34	35	36
<b>ST. CLAIR RIVER</b>							
Mouth of River at St. Clair Flats	7	572.3	32	32	33	34	35
Algonac	8	572.8	33	34	35	36	37
St. Clair	9	574.4	25	26	27	27	28
Blue Water Bridge	10	576.2	23	23	24	25	26
Head of River at Fort Gratiot	11	577.2	18	18	19	20	21
Lake Huron Approach Channel	12	577.5	15	16	16	17	18
<b>ST. MARYS RIVER</b>							
Mouth of River at Detour	13	577.5	15	16	16	17	18
West and Middle Neebish	14	577.8	12	13	13	14	15
Head of Little Rapids	15	578.4	7	8	9	9	10
U.S. Slip	16	578.7	4	4	5	6	6
Above Locks	17	600.4	3	3	4	5	6
Head of River at Point Iroquois	18	601.1	1	1	2	2	3

### UNDERSTANDING THE FORECAST

Available water depth is determined for a location by adding (if+) or subtracting (if-) the amount from the above table to the appropriate channel depth shown in the profile Connecting Channel Depths Graphic or to water depths shown on National Oceanic and Atmospheric Administration (NOAA) navigational charts.

### CAUTION

Depths so determined are representative of a still water surface elevation, disturbed by neither wind nor other causes. Depths, however, may be reduced or increased as much as several feet for short periods due to these disturbances, or when sections of channels develop shoals. Vessel masters should refer to "Local Notice to Mariners" for extent of shoaling and scattered bedrock projections in all channels. Ice conditions can have a dramatic impact on actual channel depth and can lead to large short-term water level fluctuations. Ice information can be found at the National Ice Center's website.

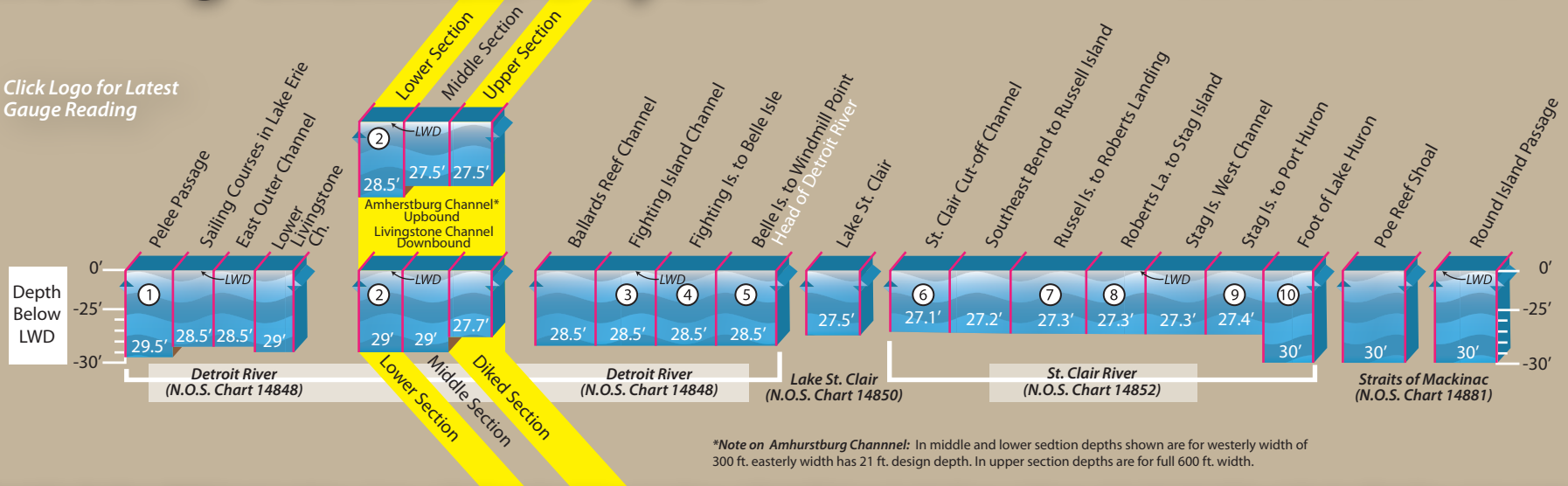
FOR FURTHER INFORMATION CONTACT:	FOR MORE INFORMATION VISIT:	WATER LEVEL INFORMATION SUPPLIED BY:
Detroit District Corps of Engineers 477 Michigan Avenue Detroit MI, 48226 1-888-694-8318 ex. 1 email: hhpm@usace.army.mil	<a href="#">Detroit District Great Lakes Homepage</a> <a href="#">International Joint Commission</a> <a href="#">Great Lakes Information Network</a> <a href="#">NOAA Tides and Currents</a> <a href="#">U.S. Coast Guard - District 9</a>	NOAA, National Ocean Service SSMC4, STATION 7523 1305 East-West Hwy Silver Spring, MD 20910-3233 (301) 713-2902

# Connecting Channels Depths

## Detroit & St. Clair Rivers



Click Logo for Latest Gauge Reading



\*Note on Amhurstburg Channel: In middle and lower section depths shown are for westerly width of 300 ft. easterly width has 21 ft. design depth. In upper section depths are for full 600 ft. width.

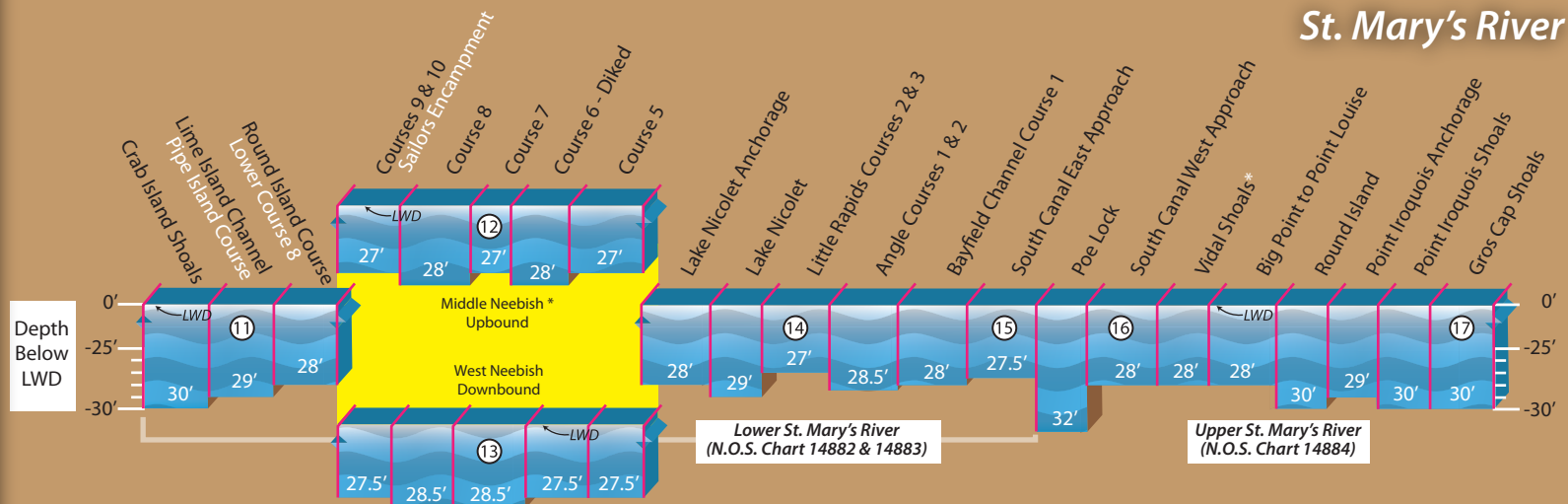
Detroit & St. Clair Rivers NOAA Gauge Locations: 1. Fermi, 2. Gibraltar, 3. Wyandotte, 4. Fort Wayne, 5. Windmill Point, 6. St. Clair Shores, 7. Algonac, 8. St. Clair State Police, 9. Mouth of Black River, 10. Fort Gratiot

**This Chart is for general information only.**

**Vessel masters should refer to Local Notice to Mariners for extent of shoaling and scattered bedrock projections in all channels.**

The connecting channels, as authorized, provide depths varying from 27 to 30 feet below Low Water Datum (LWD), depending on exposure of channel, hardness of bottom material and vessel squat in each reach. These depths are designed to permit maximum draft of 25'6" for lake vessels when the water level is at LWD. However, the individual vessel master should give further consideration to the characteristics peculiar to his vessel and to his individual clearance and safety requirements in determining the safe draft to which to load his vessel.

## St. Mary's River



\*Note on Middle Neebish: In courses 5, 6, 7, 8 & 9 depths shown are westerly width of 300 ft. in course 8 depth shown is for westerly width of 600 ft. In all courses easterly width has 21 ft. design depth.

\*Note on Vidal Shoals: For the entire channel length, a design depth of 29' exist from 500' South to 300' North of the channel centerline. What remains of the 1500' total channel width is at a 28' project depth.

St. Mary's River NOAA Gauge Locations: 11. De Tour Village, 12. West Neebish Is, 13. Rock Cut, 14. Little Rapids, 15. U.S. Slip, 16. S.W. Pier 17. Point Iroquois



**US Army Corps of Engineers®**  
Detroit District



US Army Corps  
Of Engineers  
Buffalo District  
478 Main Street  
Buffalo, New York 14202

# Notice to Navigation Interests

---

Notice No. **L24-01**      Date 27 FEB 2024  
Black Rock Channel & Tonawanda Harbor, NY  
Waterway

---

Black Rock Lock Operations - 2024 navigation season are as follows:

01 Jan- 04 May	Monday-Friday	Limited operational capabilities due to preventative maintenance which will require closures.
05 May-01Jun	7 Days per week	First <b>Down Bound</b> is at 8:00 am and Last is at 3:00 pm First <b>Up Bound</b> is at 8:30 am and Last is at 3:30 pm
02 Jun - 07 Sept	Weekdays	First <b>Down Bound</b> is at 8:00 am and Last is at 9:00 pm First <b>Up Bound</b> is at 8:30 am and Last is at 9:30 pm
	Weekends	First <b>Down Bound</b> is at 11:00 am and Last is at 9:00 pm First <b>Up Bound</b> is at 11:30 am and Last is at 9:30 pm
08 Sep - 19 Oct	7 Days per week	First <b>Down Bound</b> is at 8:00 am and Last is at 3:00 pm First <b>Up Bound</b> is at 8:30 am and Last is at 3:30 pm
20 Oct – 31 Dec	Monday-Friday	First <b>Down Bound</b> is at 8:00 am and Last is at 3:00 pm First <b>Up Bound</b> is at 8:30 am and Last is at 3:30 pm

**Down Bound** is traffic heading north from Buffalo operating on the top of each hour  
**Up Bound** is traffic heading south towards Buffalo operating on the bottom of each hour.

**After Hours** commercial traffic delivering commerce needing passage will require a 24-hour prior notice to schedule a transit time with Black Rock Lock. The Lockmaster or his representative will issue a transit time when all safety requirements can be met, and the lock can be properly staffed. The vessel is required to inform the lock of any delays which would change the scheduled transit time. After hours contact information can be provided upon request.

Questions on lock operations may be directed to the Black Rock Lock during scheduled operating hours by calling the lock office at (716) 879-4403 or emailing [Thomas.m.braunscheidel@usace.army.mil](mailto:Thomas.m.braunscheidel@usace.army.mil).

**Personal Flotation Devices (PFDs) are required for all personnel under 16 years of age during the approach and while transiting the Lock and are recommended for all vessel crew members and passengers.**

The Black Rock Lock Channel extends from Buffalo Harbor to the Black Rock Lock. It is three and one-half miles in length. The Federal navigation channel has a minimum width of 200 feet. Pleasure crafts are required to yield the right-of-way to commercial vessels due to the confined waters of the channel.

The Black Rock Lock and the Black Rock Channel provide safe passage for vessels to travel between Buffalo Harbor and Tonawanda Harbor around the reefs, rapids and fast currents that exist in the upstream portion of the Niagara River.

Charts: 14832 - Upper Niagara River, New York  
14833 - Buffalo Harbor, New York

**GREAT LAKES-MARINE EVENT-SAFETY ZONES-SECURITY ZONES**

Events listed below are those events that may have accompanying special local regulations.

<b><u>Location</u></b>	<b><u>Name of Event</u></b>	<b><u>Date / Time</u></b>	<b><u>POC</u></b>	<b><u>Tel #</u></b>	
<b><u>LAKE ONTARIO</u></b>					
Youngstown, NY	LOOR Susan Hood Trophy Race (SHTR)	31-May-24	1900-2330	Graham Dougall	866-462-8828
Youngstown, NY	LOOR LOSHRS Race 2 (PCYC to YYC)	15-Jun-24	1000-2330	Graham Dougall	866-462-8828
Youngstown, NY	LOOR LOSHRS Race 3 (YYC to PCYC)	16-Jun-24	1000-1130	Graham Dougall	866-462-8828
Youngstown, NY	LOOR LO300	13-17 Jul-24	1000-2400	Graham Dougall	866-462-8828
Youngstown, NY	LOOR LOSHRS Race 4 (Long Distance/100 miler)	17-18 Aug=24	1000-2330	Graham Dougall	866-462-8828
Sodus Bay, NY	Breakwater Barrier Construction Project outside Sod	1 Apr-24-15 May-24	0700-2000	Glen Roet	315-564-6784
Sodus Bay, NY	Breakwater Barrier Construction Project outside Sod	1 Aug- 31 Oct	0700-2000	Glen Roet	315-564-6784
Rochester, NY	Don Van Vechten Sunfish Regatta	3-Aug-24	1000-1500	William Dexter	585-461-2422
Rochester, NY	Brown Jug Afternoon Race	2-3 Sep	1200-1530	William Dexter	585-461-2422
Rochester, NY	Thistle Sailboat Fall Frontier Regatta	7-8 Sep	1100-1400	William Dexter	585-461-2422
Rochester, NY	RYC 2024 High School Sailing Program	13 Mar-10 Nov	various	Peter Mendick	585-342-5511
Rochester, NY	Lake Ontario Club Challenge LOCC	19-21 Jul	various	Peter Mendick	585-342-5511
Rochester, NY	RYC Annual Memorial Day Fleet Review	27-May-24	1450-1900	Peter Mendick	585-342-5511
Rochester, NY	RYC Jr Sail Instruction	19 Jun- 12 Aug	0900-1600	Peter Mendick	585-342-5511
Rochester, NY	Melges 15 Great Lakes Championship	12-14 Jul	various	Peter Mendick	585-342-5511
Rochester, NY	Lake Ontario Yacht Racing Association LYRA Regatta	29 Jul-4 Aug	various	Peter Mendick	585-342-5511
Rochester, NY	Junior Olympics	9-11 Aug	various	Peter Mendick	585-342-5511
Rochester, NY	Hospice Regatta	16-17 Aug	various	Peter Mendick	585-342-5511
Rochester, NY	Lambert Lai Regatta	23-25 Aug	various	Peter Mendick	585-342-5511
Rochester, NY	RYC 2024 One Design and Offshore Racing Series	14 May - 14 Oct	various	Peter Mendick	585-342-5511

**LAKE ERIE**

Buffalo, NY	Shakedown Race, Buffalo Harbor Sailing Club Race Se	19-May-24	1510-1910	Laura Redding	716-574-0540
Buffalo, NY	China Light Series (Tuesday Night Series), Buffalo Har	21 May - 3 Sep	1810-2130	Laura Redding	716-574-0540
Buffalo, NY	Wednesday Night Series, Buffalo Harbor Sailing Club	22 May - 4 Sep	1810-2130	Laura Redding	716-574-0540
Buffalo, NY	Chuck Chilcott Summer Regatta, Buffalo Harbor Sailin	12-13 Jul	1810-1810	Laura Redding	716-574-0540
Buffalo, NY	Double Hand Series, Buffalo Harbor Sailing Club Race	25 Jul- 15 Aug	1810-2130	Laura Redding	716-574-0540
Buffalo, NY	Last Chance Regatta, Buffalo Harbor Sailing Club Race	11-Sep-24	1030-1430	Laura Redding	716-574-0540
Buffalo, NY	Die Hard Series, Buffalo Harbor Sailing Club Race Sea	11 Sep -25 Sep	1810-2130	Laura Redding	716-574-0540
Buffalo, NY	John Bennett Regatta	5-May-24	0700-1600	Ian Suchan	716-604-5156
Buffalo, NY	Fontana All-High Regatta	27-May-24	0700-1500	Ian Suchan	716-604-5156
Buffalo, NY	4th of July Boat Parade	4-Jul-24	2000-2100	Kevin Arnold	716-946-7144
Buffalo, NY	West Side Invitational	7-Jul-24	0700-1400	Ian Suchan	716-604-5156
Buffalo, NY	Head of the Niagara	13-Oct-24	0700-1400	Ian Suchan	716-604-5156
Rochester, NY	Genesee Yacht Club Tuesday Night Racing	21 May - 17 Sep	1730-2000	Kenny Fourspring	814-746-2183
Rochester, NY	Genesee Yacht Club Saturday Morning Racing	25 May - 5 Oct	1000-1300	Kenny Fourspring	814-746-2183
Rochester, NY	Genesee Yacht Club Scotch Bonnet Light Race	23-24 Aug	1700-1700	Kenny Fourspring	814-746-2183

N/A

**DETROIT RIVER**

**LAKE ST. CLAIR/St. Clair River**

N/A

**LAKE HURON**

N/A

**LAKE MICHIGAN & Green Bay**

N/A

**LAKE SUPERIOR**

N/A



## CURRENT NINTH DISTRICT BRIDGE MAINTENANCE/ACTIVITIES

### Local Notice to Mariner Week [15/24]

**Note:** Short-term bridge maintenance closures and various activities may only be published [through Broadcast Notice to Mariners](#) and may not be included [in the Local Notice to Mariners](#). Mariners should both *listen* to Broadcast Notice to Mariners (BNM) and *read* Coast Guard Local Notice to Mariners (LNM) available by clicking [HERE](#) for the most recent and complete marine information.

There is a Microsoft Teams meeting with the US Coast Guard, Mariners, and Bridge Owners being held on the last Wednesday of every month at 1300 ET, and **YOU** are welcome to join in.

#### Join on your computer or mobile app

[Click here to join the meeting](#)

#### Or call in (audio only)

[+1 410-874-6742,,515305017#](#)

Phone Conference ID: 515 305 017#

PUBLIC NOTICES FOR 9th District BRIDGES: <https://www.navcen.uscg.gov/D9BN>

#### Please contact us with any questions or concerns:

Blair Stanifer (216) 902-6086 or [William.B.Stanifer@uscg.mil](mailto:William.B.Stanifer@uscg.mil)  
Lee Soule (216) 902-6085 or [Lee.D.Soule@uscg.mil](mailto:Lee.D.Soule@uscg.mil)  
Michael Walker (216) 902-6087 or [Michael.O.Walker2@uscg.mil](mailto:Michael.O.Walker2@uscg.mil)  
FAX: (216) 902-6088

Commander (dpb)  
Ninth Coast Guard District  
1240 E. 9th St. Room 2047B  
Cleveland, Ohio 44199-2001

#### **FEDERAL REGULATIONS DOCKET STATUS**

[Regulations.gov](#) enter the USCG - docket number in the search window to review all comments and documents associated with the project.

USCG-2023-0185 - FR – Sandusky Bay – to Command for Approval  
USCG-2023-0188 - FR – Cuyahoga River – to Legal Review and Command Approval  
*USCG-2024-0018 - NPRM -Cherry Street Bridge, Milwaukee River - to publishing*

#### **GREAT LAKES REGION**

#### **GREAT LAKES, Drawbridge Delay Reports, Chart 14500**

Mariners are requested to submit Reports of Drawbridge Signal/Operations Delays directly to the Ninth Coast Guard District Bridge Branch using the attached form. Reports of signal or drawbridge delays have been processed by Coast Guard Marine Safety Offices in recent years but will now be processed and traced by the Bridge Branch. Reports may be sent by mail, e-mail, or by fax. The mailing address and fax number are on the form. The updated form is printed and attached on the last page of this list.

[08/05] [34/12]

## ST. LAWRENCE SEAWAY

### NY STATE CANAL SYSTEM

(Everything West of St. Johnsville, NY)

#### **NY - NEW YORK STATE CANAL SYSTEM – Erie Canal – Chart 14786**

From April 1, 2023, through **July 1, 2024**, snooper trucks will be working under the E-182 Main Street Bridge, mile 278.93, over the Erie Canal to rehabilitate the bridge in the fully open position. The permitted navigation lights will be removed and temporarily replaced with steady burning yellow lights on the bottom and four-corners of the drawspan. Spotters will warn of approaching vessels and move the man lift to allow vessels to pass.

[12/22]

#### **NY - NEW YORK STATE CANAL SYSTEM - Erie Canal – Chart 14786**

From March 15, 2024, through **January 31, 2025**, daily, contractors will utilize scaffolding and man lifts above low steel of the E144C I-390 Bridge at mile 258.65 and the E144D I-390 Bridge at mile 258.68 over the Erie Canal.

[42/23]

#### **NY - NEW YORK STATE CANAL SYSTEM - Erie Canal – Chart 14786**

From January 29, through **April 14, 2024**, scaffolding that hangs approximately 6-feet below low steel will be installed under the E166 Lyell Ave, SR 31 Bridge at mile 264.08 over the Erie Canal for maintenance.

[52/23]

#### **NY - NEW YORK STATE CANAL SYSTEM - Erie Canal – Chart 14786**

From April 8, through **July 31, 2024**, between the hours of 0700 and 1700, Monday through Friday, contractors will utilize snooper trucks under the E-233 Main Street Bridge at Mile 320.82, the E-234 Transit Street Bridge at Mile 564.00, the E236a Lockport Bypass Bridge at Mile 564.17, and the E-248 Webster Street Bridge at Mile 338.44, all over the Erie Canal. Spotters will warn of approaching vessels and move the man lift to allow vessels to pass. Mariners should avoid passing directly under water falling from the bridge.

[02/24]

#### **NY - NEW YORK STATE CANAL SYSTEM - Erie Canal – Chart 14786**

From April 8, through **June 28, 2024**, between the hours of 0700 and 1700, Monday through Friday, contractors will utilize snooper trucks under the E-217 South carmen Street Bridge at Mile 309.59, the E-237 Robinson Road Bridge at Mile 323.79, the E-238a Fiegle Road Bridge at Mile 325.09, the E-240 Tonawanda Creek Bridge Mile 327.34, all over the Erie Canal. Spotters will warn of approaching vessels and move the man lift to allow vessels to pass. Mariners should avoid passing directly under water falling from the bridge.

[02/24]

#### **NY - NEW YORK STATE CANAL SYSTEM - Erie Canal – Chart 14786**

From May 6 through **August 31, 2024**, between the hours of 0700 and 1700, Monday through Friday Snooper trucks will be washing the all the bridges from the E-29 Lansing Road Bridge at Mile 74.94 to the E-52 Erie Boulevard Bridge at Mile 115.08 over the Erie Canal. Spotters will warn of approaching vessels and move the man lift to allow vessels to pass. Mariners should avoid driving through or under clean falling water from the bridge.

[11/24]

## LAKE ONTARIO

#### **NY - LAKE ERIE – Rochester Harbor – Chart 14815**

On September 15, 2024, between the hours of 0745 and 0930, the O'Rourke Bridge at Mile 1.25 over the

Genesee River will be secured to masted navigation in conjunction with the Rochester Marathon. Vessels able to pass under the bridge without an opening may do so at any time.

[16/24]

## LAKE ERIE - MAHONING RIVER - NIAGARA RIVER- ALLEGHENY RIVER

### **NY - LAKE ERIE – Buffalo Harbor – Chart 14833**

From January 1 through **March 31, 2025**, the Canadian National International Railroad Bridge at mile 3.8 over the Black Rock Canal will be secured to masted navigation for maintenance. Vessels able to pass under the bridge without an opening may do so at any time.

[30/23]

### **NY - LAKE ERIE – Niagara River – Chart 14833**

From August 28, 2023, through **July 26, 2026**, scaffolding that extends approximately 3-feet below low steel will be installed under the South Grand Island Bridge at Mile 3.40 and the North Grand Island Bridge at Mile 18, both over the Niagara River. A 16-foot by 32-foot materials barge and a 4-foot by 40-foot temporary dock will be used under the bridges.

[32/23]

### **OH - LAKE ERIE – Cleveland Harbor – Chart 14839**

From June 1, 2024, through **September 30, 2026**, daily scaffolding will be installed under the I-490 Bridge at mile 4.79 over the Cuyahoga River that hangs approximately 4-feet below low steel. Snooper vehicles and manlifts will be used. Spotters will warn workers of approaching vessels and move the manlift to allow vessels to pass.

[43/23]

### **OH - LAKE ERIE – Ashtabula Harbor – Chart 14836**

Citation: 89 FR 14744

The Coast Guard is modifying the operating schedule that governs the Fifth Street Bridge, mile 0.15, and the Norfolk Southern Railroad Bridge, mile 1.5, both over the Ashtabula River. The Coast Guard is also changing signaling and signage requirements for the Norfolk Southern Railroad Bridge, mile 1.5. The Coast Guard is modifying these rules in response to complaints received concerning the operations of one or more bridges over the waterway and a desire to improve safety, remove barriers to interstate commerce, improve communications, and standardize winter operations associated with these bridges. To view documents mentioned in this preamble as being available in the docket, go to [https:// www.regulations.gov](https://www.regulations.gov). Type USCG– 2023–0189 in the “SEARCH” box and click “SEARCH.” Click on Open Docket Folder on the line associated with this rule.

§ 117.847 Ashtabula River.

(a) The draw of the Fifth Street Bridge, mile 1.4, over the Ashtabula River shall open on signal for the passage of vessels on the hour and half hour, except from October 10 through May 1 when no drawtender is required to be in attendance and the bridge will open on signal with a 12-hour advance notice from vessels.

(b) The draw of the Norfolk Southern Railroad Bridge, mile 1.5, over the Ashtabula River shall open on signal and may be remotely operated. The bridge owner shall maintain and monitor a 2-way public address system, VHF–FM Marine Radio, and telephone. From October 10 through May 1 the bridge will open on signal with a 12- hour advance notice from vessels. The bridge shall display a sign readable from vessels approaching the bridge from upriver or down river and readable for 500 feet that states: the name of the bridge; the river mile; that the bridge is remotely operated; and that mariners may signal the bridge to open by sounding one prolonged blast followed by one short blast of the horn, calling via VHF–FM Marine Radio Channel 16, or by calling the number posted by the owner. The sign shall also include language notifying mariners that from October 10

through May 1 the bridge requires a 12-hour advance notice for openings by calling the number posted by the owner.

DATES: This rule is effective **April 1, 2024**.

[10/24]

#### **OH - LAKE ERIE – Lake Erie Islands – Chart 14844**

Citation: 89 FR 16690

The Coast Guard is altering operating regulations of the Monroe Street Highway Bridge, mile 0.4 and the Norfolk Southern Railroad Bridge, mile 1.5, over the Portage River at Port Clinton, Ohio.

You can view the materials and comments in this rulemaking in docket number USCG– 2023–0186 by visiting the Federal Decision-Making Portal at [https:// www.regulations.gov](https://www.regulations.gov).

If you have questions on this final rule, call or email Mr. Lee D. Soule, Bridge Management Specialist, Ninth Coast Guard District; telephone 216–902– 6085, email [Lee.D.Soule@uscg.mil](mailto:Lee.D.Soule@uscg.mil).

§ 117.851 Portage River.

(a) The draw of the Monroe Street bridge, mile 0.4 at Port Clinton, shall open as follows:

(1) From April 1 through November 30—

(i) Between the hours of 6 p.m. and 6 a.m., the draw shall open on signal.

(ii) Between the hours of 6 a.m. and 6 p.m., the draw shall open on signal. However, the draw need not open on signal during this time for recreational craft and commercial vessels licensed to carry six or less passengers. For these vessels, the draw need open only from five minutes before to five minutes after the hour and half-hour.

(2) From December 1 through March 31, the draw shall open on signal if at least 12 hours' notice is given.

(b) The draw of the Norfolk Southern Bridge, Mile 1.5 at Port Clinton, is remotely operated, is required to operate a radio telephone, and operate and answer a telephone, and shall open on signal. Except, from December 1 through March 31, the draw shall open on signal if at least 12-hours' notice is given.

[15/24]

**This rule is effective April 8, 2024.**

[11/24]

#### **OH - LAKE ERIE – Toledo Harbor – Chart 14847**

From May 20 through **May 28, 2024**, between the hours of 0700 and 1700, Monday through Friday inspectors will use a combination of Snooper Trucks and Bosun Chairs under the Anthony Wayne Bridge at Mile 5.16 over the Maumee River. Spotters will warn of approaching vessels and move the inspectors so vessels can pass.

[13/24]

#### **OH - LAKE ERIE – Lorain Harbor – Chart 14841**

On **April 10, 2024**, between the hours of 0700 and 1600, the Norfolk Southern Railroad Bridge at Mile 1.2 over the Black River will be secured to masted navigation for emergency maintenance. Vessels able to pass under the bridge without an opening may do so at any time.

[14/24]

#### **OH - LAKE ERIE – Niagara River \_ Chart 14822**

From April 22 through **July 8, 2024**, traveling platforms that are 21-feet wide and hang approximately 4-feet below low steel will be used under the Canadian National Railroad Bridge at mile 33.0 over the Niagara River.

[14/24]

#### **OH - LAKE ERIE – Cleveland Harbor – Chart 14839**

On **April 27, 2024**, between the hours of 0830 and 0930 the Willow Avenue Bridge at mile 1.02 over the Old

Channel of the Cuyahoga River will be secured to masted navigation in conjunction with the 10-miler Run. Vessels able to pass under the bridge without an opening may do so at any time.

[15/24]

**OH - LAKE ERIE – Cleveland Harbor – Chart 14839**

On **July 20, 2024**, between the hours of 1000 and 1040, the Carter Road Bridge at mile 2.43 over the Cuyahoga River will be secured to masted navigation in conjunction with the Parrot Head Race. Vessels able to pass under the bridge without an opening may do so at any time.

[15/24]

**OH - LAKE ERIE – Lorain Harbor – Chart 14841**

Citation: 89 FR 24381

The Coast Guard is altering the operating schedule that governs the Charles Berry Bridge, mile 0.6, and the Norfolk Southern Railroad Bridge, mile 1.2, both over the Black River.

To view the docket, go to [https:// www.regulations.gov](https://www.regulations.gov). Type the docket number (USCG–2023–0187) in the “SEARCH” box.

If you have questions on this final rule, call or email Mr. Lee D. Soule, Bridge Management Specialist, Ninth Coast Guard District; telephone 216–902– 6085, email [Lee.D.Soule@uscg.mil](mailto:Lee.D.Soule@uscg.mil).

Revise 33 CFR 117.850 to read as follows: § 117.850 Black River.

(a) The Charles Berry Bridge, mile 0.6, will open on signal, except from January 1 through March 31 when the bridge will open if a 12-hour advance notice is given. The bridge will operate and maintain a VHF–FM Marine Radio and a telephone number.

(b) The Norfolk Southern Railroad Bridge, mile 1.2, will open on signal, except from January 1 through March 31 when the bridge will open if a 12-hour advance notice is given. The bridge will operate and maintain a VHF–FM.

This rule is effective May 8, 2024.

[15/24]

**OH - LAKE ERIE – Toledo Harbor – Chart 14847**

**Citation:** 89 FR 24383

The Coast Guard is modifying the operating schedule that governs the CSX Railroad Bridge, mile 1.07, the Wheeling and Lake Erie Railroad Bridge, mile 1.80, the Craig Memorial Bridge, mile 3.30, the Martin Luther King Jr. Memorial Bridge, mile 4.30, and the Norfolk Southern Railroad Bridge, mile 5.76, all over the Maumee River at Toledo, Ohio.

To view the docket, go to [https:// www.regulations.gov](https://www.regulations.gov). Type the docket number (USCG–2023–0184) in the “SEARCH” box.

If you have questions on this final rule, call or email Mr. Lee D. Soule, Bridge Management Specialist, Ninth Coast Guard District; telephone 216–902– 6085, email [Lee.D.Soule@uscg.mil](mailto:Lee.D.Soule@uscg.mil).

Revise 33 CFR 117.855 to read as follows:

§ 117.855 Maumee River.

- (a) The draw of the CSX Railroad Bridge, mile 1.07, will open on signal, except that from December 15 through March 31 the bridge will require at least 12-hours advance notice. The bridge will operate and maintain a VHF–FM Marine Radio and a telephone number.
- (b) The draw of the Wheeling and Lake Erie Railroad Bridge, mile 1.80, will open on signal, except that from December 15 through March 31 the bridge will require at least 12-hours advance notice. The bridge will operate and maintain a VHF–FM Marine Radio.
- (c) The draw of the Craig Memorial Bridge, mile 3.30, will open on signal, except that from December 15 through March 31 the bridge will require at least 12-hours advance notice. The bridge will operate and maintain a VHF–FM Marine Radio.
- (d) The draw of the Martin Luther King Jr Memorial Bridge, mile 4.30, will open on signal, except that from December 15 through March 31 the bridge will require at least 12-hours advance notice. The bridge will operate and maintain a VHF–FM Marine Radio.
- (e) The draw of the Norfolk Southern Railroad Bridge, mile 5.76, will open on signal, except that from December 15 through March 31 the bridge will require at least 12-hours advance notice. The bridge will operate and maintain a VHF–FM Marine Radio and a telephone number.

This rule is effective **May 8, 2024**

[15/24]

#### **OH - LAKE ERIE – Sandusky Bay – Chart 14845**

On April 17, April 18, April 22, and April 23, 2024, between the hours of 0400 and 1600 each day, the Norfolk Southern Railroad Bridge at mile 3.5 over the Sandusky Bay, will be secured to masted navigation for maintenance. Vessels able to pass under the bridge without an opening may do so at any time.

[16/24]

#### **DETROIT RIVER - LAKE ST. CLAIR - ST. CLAIR RIVER – RIVER ROUGE**

\*\*\*\*\*REVISED\*\*\*\*\*

#### **MI - DETROIT RIVER – Main Channel – Chart 14848**

From November 1, 2022, through **August 18, 2024**, contractors will be constructing the Gordie Howe International Bridge at mile 16.7 over the Detroit River. No equipment will be placed in the water. Overhead work will have temporary steady burning yellow lights to mark new construction. A moving platform with quick flashing red lights and orange or red ball fenders on the bottom four corners with a safety net that hangs approximately 15-feet below low steel will be constructing the bridge. Mariners should avoid passing directly under the platform at any time. Snooper type vehicles will be utilized on the bridge throughout construction. Spotters will warn of approaching vessels and move the man lift to allow vessels to pass. When construction is completed and all equipment removed, the final vertical clearances for the bridge will be 152-feet for the center 100-feet of the navigation channel. No less than 137-feet of vertical clearance will be available at the channel limits. Vertical clearances are based on IGLD85.

[47/20] [07/22] [02/24]

#### **LAKE HURON**

#### **MI - LAKE HURON – Saginaw River – Chart 14867**

From December 18, 2023, through **April 19, 2024**, the Independence Street Bridge at Mile 3.88, over the Saginaw River will be secured to masted navigation. Vessels able to pass under the bridge without an opening may do so at any time; however, two barges 80-foot by 40-foot or smaller will be working under the bridge. If

needed the barges will move with a 2-hour advance notice. Mariners should provide advance notice for the barges by calling 608-425-0171.

[17/23] [47/23]

#### **MI - LAKE HURON – Saginaw River – Chart 14867**

From April 19 through **November 30, 2024**, the Independence Street Bridge at Mile 3.88, over the Saginaw River will have two barges 80-foot by 60-foot working under the bridge. If needed the barges will move with a 2-hour advance notice. Mariners should provide advance notice for the barges by calling 608-425-0171.

[15/24]

#### **MI - LAKE HURON – Saginaw River – Chart 14867**

The Coast Guard has received a report that the bridge leaves of the Independence Street Bridge at Mile 3.88, over the Saginaw River has only opened to 63 degrees instead of 70 degrees for the past several years. This lack of a full opening has reduced the advertised horizontal distance between the leaves that denoted maximum unlimited vertical distance. Mariners should proceed with caution until the discrepancy can be repaired through the rehabilitation program currently in progress.

[09/24]

### **LAKE MICHIGAN - EAST**

#### **MI - LAKE MICHIGAN – Manistee Harbor – Chart 14938**

From April 4, through **May 17, 2024**, between the hours of 0700 and 1930, Monday through Saturday, two 30-foot by 40-foot barges will be working at the US 31 Bridge at Mile 1.4 over the Manistee River. The barges will monitor VHF-FM Marine Channel 16 and will move to accommodate vessels if a 30-minute advance notice of arrival is given.

[14/24]

#### **MI - LAKE MICHIGAN – St Joseph River – Chart 14930**

On **May 11, 2024**, from 1000 to 1600, the Blossomland/M-63 Bridge at Mile 0.92 and the Twin Cities Bicentennial Bridge at Mile 1.30, over the Saint Joseph River will be secured to masted navigation in conjunction with the Twin Cities Grand Floral Parade. Vessels able to pass under the bridges without an opening may do so at any time.

[05/24]

#### **MI - LAKE MICHIGAN – St Joseph River – Chart 14930**

The Coast Guard has received a report that the Twin Cities Bicentennial Bridge at Mile 1.30, over the Saint Joseph River is stuck in the closed position. Vessels able to pass under the bridge without an opening may do so at any time.

[05/24]

#### **MI - LAKE MICHIGAN – St Joseph River – Chart 14930**

From April 15 through **April 19, 2024**, between the hours of 0700 and 1900, daily, a 20-foot by 40-foot barge will be making emergency repairs under the Twin Cities Bicentennial Bridge at Mile 1.30 over the Saint Joseph River. The barge will monitor VHF-Fm Marine Channel 16 and move to accommodate large vessels with a 3-hour advance notice.

[15/24]

### **LAKE MICHIGAN – MICHIGAN CITY & INDIANA HARBOR & GARY HARBOR**



### **IL - LAKE MICHIGAN – Indiana Harbor Canal – Chart 14927**

From November 2 through **November 17, 2024**, and again from December 7 through **December 21, 2024**, on each Saturday at 0001 through each Sunday at 2359, the Elgin, Joliet, and Eastern Railroad Bridge at Mile 0.68 over the Indiana Harbor Canal will be secured to masted navigation. Vessels able to pass under the bridge without an opening may do so at any time.

[52/23]

### **LAKE MICHIGAN – CALUMET RIVER & LITTLE CALUMET RIVER**

#### **IL - LAKE MICHIGAN – Calumet Harbor – Chart 14927**

From September 7, 2023, through **May 22, 2024**, scaffolding will be installed under the Indiana Avenue Bridge at Mile 10.80 (CORPS MILE 322.3) over the Little Calumet River that hangs approximately 1-foot below low steel.

[34/23]

### **CHICAGO RIVER – MAIN RIVER CHANNEL, NORTH BRANCH, NORTH SHORE CHANNEL, AND SOUTH BRANCH AND SOUTH FORK OF SOUTH BRANCH**

#### **IL - LAKE MICHIGAN – Chicago Harbor – Chart 14927**

From March 18 through **July 31, 2024**, between the hours of 0600 and 1800 Monday through Saturday, a 125-foot by 80-foot barge will be working under the Franklin-Orleans Street Bridge at Mile 1.47 (325.7 CORPS MILE) over the Main Branch of the Chicago River. The barge will move if provided a 1-hour advance notice directly to the barge.

[09/24]

#### **IL - LAKE MICHIGAN – Chicago Harbor – Chart 14927**

From April 1 through **June 28, 2024**, between the hours of 0630 and 1730, Monday through Friday, the Lake Shore Drive Bridge at Mile 0.32 (CORPS MILE 326.9) over the Main Branch of the Chicago River will operate one leaf on signal and both leaves will open if a 2-hour advance notice is provided directly to the drawtender. A 40-foot by 40-foot barge will be performing maintenance under one leaf.

[13/24]

### **CALUMET SAG CHANNEL**

\*\*\*\*\*REVISED\*\*\*\*\*

#### **IL - LAKE MICHIGAN – Calumet-SAG Channel – Chart 14927**

From February 20, 2024, through **November 1, 2024**, scaffolding that hangs approximately 6-feet below low steel will be installed under one half of the 127<sup>th</sup> Street Bridge at Mile 18.81 (CORPS MILE 314.2) over the Calumet-SAG Channel. A 40-foot by 50-foot barge will be used at the bridge and will move if provided a 30-minute advance notice of arrival on VHF-FM marine Channel 16.

[03/24] [04/24] [10/24]

### **CHICAGO SANITARY AND SHIP CANAL, KANKAKEE RIVER & ROCK RIVER**

(Lake Michigan to Mile 36.2/291.1)

#### **IL - LAKE MICHIGAN – Chicago Sanitary and Ship Canal – Chart 14927**

From January 15, through **August 31, 2024**, scaffolding will be installed that hangs approximately 3-feet below low steel of the South-Central Avenue Bridge at mile 11.1 (CORPS MILE 316.2) over the Chicago Sanitary and



Ship Canal.

[03/24]

**IL - LAKE MICHIGAN – Chicago Sanitary and Ship Canal – Chart 14927**

on April 22 and **April 23, 2024**, between the hours of 0900 and 1400 each day, inspectors will utilize snooper trucks under the South Harlem Avenue Bridge at Mile 13.3 over the Chicago Sanitary and Ship Canal. Spotters will warn of approaching vessels and move the manlift to allow vessels to pass.

[15/24]

**LAKE MICHIGAN – WEST**

\*\*\*\*\*REVISED\*\*\*\*\*

**WI - LAKE MICHIGAN – Racine Harbor – Chart 14925**

From December 1, 2023, through **April 15, 2024**, the State Street Bridge at Mile 0.53 over the Root River will be secured to masted navigation and scaffolding that hangs approximately 4-feet below low steel will be installed under the bridge. Vessels that can safely pass under the bridge without an opening may do so at any time.

[43/22] [13/24]

**WI - LAKE MICHIGAN – Milwaukee Harbor – Chart 14924**

On **April 13, 2024**, between the hours of 0730 and 1130, the Broadway Street Bridge at Mile 0.79 over the Milwaukee River and the Kinnikinnic Avenue Bridge at Mile 1.67 over the Kinnikinnic River will be secured to masted navigation in conjunction with the Milwaukee Marathon. Vessels able to pass under the bridges without an opening may do so at any time.

[05/24]

**WI - LAKE MICHIGAN – Milwaukee Harbor – Chart 14924**

From March 25 through **August 30, 2024**, between the hours of 0700 and 1600, Monday through Friday, two barges 70-feet by 50-feet or smaller will be painting the Holton Street Bridge, mile 2.84, over the Milwaukee River. The barges will move to accommodate vessels if a 2-hour advance notice is provided by calling 262-366-5121.

[11/24]

**WI - LAKE MICHIGAN – Marinette Harbor – Chart 14917**

On April 17 and **April 18, 2024**, between the hours of 0600 and 1430, the Ogden Street Bridge at Mile 0.4, over the Menomonee River will require a 15-min advance notice for openings. Mariners should provide advance notice directly to the drawtender while inspectors utilize drones under the bridge.

[10/24]

**LAKE MICHIGAN – Sturgeon Bay Ship Canal – Green Bay – Fox River – Wolf River**

**WI - LAKE MICHIGAN – Green Bay – Chart 14918**

From December 1, 2026, through **March 31, 2027**, the Tilleman Memorial Bridge at mile 2.27 over the Fox River will be secured to masted navigation. Vessels able to pass under the bridge without an opening may do so at any time.

[49/23]

\*\*\*\*\*REVISED\*\*\*\*\*

**WI - LAKE MICHIGAN – Fox River – Chart 14916**

from October 8, 2026, through **April 8, 2027**, the Wisconsin Street Bridge at mile 56.72 over the Fox River will be secured to masted navigation and scaffolding that hangs approximately 4-feet will be installed under the

bridge. Vessels able to pass under the bridge safely, without an opening may do so at any time.

[02/24] [03/24]

**WI - LAKE MICHIGAN – Green Bay – Chart 14918**

From 0500 to 1500 on **May 19, 2024**, the Tilleman Memorial Bridge at Mile 2.27 over the Fox River will be secured to masted navigation in conjunction with the Green Bay Cellcom Marathon. Vessels able to pass under the bridge without an opening may do so at any time.

[05/24]

**WI - LAKE MICHIGAN – Green Bay – Chart 14918**

From 1300 to 2330 on **July 4, 2024**, the Ray Nitschke Bridge at Mile 1.58 over the Fox River will be secured to masted navigation in conjunction with the City of Green Bay Fourth of July Celebration. Vessels able to pass under the bridge without an opening may do so at any time.

[05/24]

**WI - LAKE MICHIGAN – Fox River – Chart 14916**

On **May 6, 2024**, between the hours of 0600 and 1430, the Wisconsin Street Bridge at Mile 56.72, over the Fox River will require a 15-min advance notice for openings. Mariners should provide advance notice directly to the drawtender while inspectors utilize snooper trucks under the bridge.

[10/24]

**WI - LAKE MICHIGAN – Fox River – Chart 14916**

On **May 8, 2024**, between the hours of 0600 and 1430, the Jackson Street Bridge at Mile 56.22, over the Fox River will require a 15-min advance notice for openings. Mariners should provide advance notice directly to the drawtender while inspectors utilize drones under the bridge.

[10/24]

**WI - LAKE MICHIGAN – Sturgeon Bay – Chart 14919**

On **April 22, 2024**, between the hours of 0600 and 1430, the Bayview Bridge at Mile 3.0, over the Sturgeon Bay Ship Canal will require a 15-min advance notice for openings. Mariners should provide advance notice directly to the drawtender while inspectors utilize drones under the bridge.

[10/24]

**WI - LAKE MICHIGAN – Sturgeon Bay – Chart 14919**

From May 20 through **May 22, 2024**, between the hours of 0600 and 1430, daily, the Michigan Street Bridge at Mile 4.3, over the Sturgeon Bay Ship Canal will require a 15-min advance notice for openings. Mariners should provide advance notice directly to the drawtender while inspectors utilize drones under the bridge.

[10/24]

**WI - LAKE MICHIGAN – Sturgeon Bay – Chart 14919**

On **May 23, 2024**, between the hours of 0600 and 1430, between the hours of 0600 and 1430, daily, the Maple-Oregon Street Bridge at Mile 4.17, over the Sturgeon Bay Ship Canal will require a 15-min advance notice for openings. Mariners should provide advance notice directly to the drawtender while inspectors utilize snooper under the bridge.

[10/24]

**WI - LAKE MICHIGAN – Sturgeon Bay – Chart 14919**

From May 20 through **May 22, 2024**, between the hours of 0600 and 1430, daily, the Michigan Street Bridge at Mile 4.3, over the Sturgeon Bay Ship Canal will require a 15-min advance notice for openings. Mariners should provide advance notice directly to the drawtender while inspectors utilize drones under the bridge.

[10/24]

**WI - LAKE MICHIGAN – Fox River – Chart 14916**

On **May 7, 2024**, between the hours of 0600 and 1430, the Congress Street Bridge at Mile 58.04, over the Fox River will require a 15-min advance notice for openings. Mariners should provide advance notice directly to

the drawtender while inspectors utilize snooper trucks under the bridge.

[10/24]

**WI - LAKE MICHIGAN – Fox River – Chart 14916**

From March 21 through **April 5, 2024**, a new pedestrian bridge will be installed at the mouth of the Found Du Lac River at the south shoreline of Lake Winnebago. Mariners should use caution in the area.

[11/24]

\*\*\*\*\*REVISED\*\*\*\*\*

**WI - LAKE MICHIGAN – Fox River – Chart 14916**

From April 22 through **May 17, 2024**, between the hours of 0730 to 1900, Monday through Friday two 60-foot by 30-foot or smaller barges will be working at the proposed South Bridge Connector Bridge at mile 9.94 over the Fox River. The barges will monitor VHF-FM Marine Channel 16 and make passing arrangements with other vessels.

[15/24] [15/24]

\*\*\*\*\*REVISED\*\*\*\*\*

**WI - LAKE MICHIGAN – Green Bay – Chart 14918**

On **April 19, 2024**, between the hours of 0400 and 1400, the Ray Nitschke Bridge at mile 1.58, over the Fox River will be secured to masted navigation for cleaning. Vessels able to pass under the bridge without an opening may do so at any time; however, mariners should avoid passing under large amounts of falling water.

[12/24] [13/24] [14/24]

**WI - LAKE MICHIGAN – Green Bay – Chart 14918**

From 0700 on April 23 through 1500 on **April 25, 2024**, the Ray Nitschke Bridge at mile 1.58, over the Fox River will be secured to masted navigation for maintenance. Vessels able to pass under the bridge without an opening may do so at any time.

[14/24]

**LAKE SUPERIOR**

**WI - LAKE SUPERIOR – Duluth-Superior Harbor – Chart 14975**

On **July 4, 2024**, between the hours of 1900 to 2330, the Duluth Ship Canal Bridge at mile 0.24 over the Duluth Ship Canal and from 2030 to 2330 the Minnesota Slip Bridge at the mouth of Minnesota Slip, will be secured to masted navigation. Vessels able to pass under either bridge without an opening may do so at any time. A rain date of July 5, 2024, may be authorized.

[05/24]

**RAINY LAKE, RAINY RIVER, LAKE OF THE WOODS, WISCONSIN RIVER, MISSISSIPPI RIVER, & RED RIVER OF THE NORTH**

Sorted by Chart Number

## Authorized Winter Hours for Great Lakes Bridges

October 15, 2023 - April 30, 2024

Last Updated: 02 FEB 2024

Chart Number	Port Name	Bridge Name	Mile	Waterway	Start Date	End Date	Advance Notice	Primary Phone Number	Secondary Phone Number	Alternate Phone	Alternate Phone
14815	Rochester	O' Rorke	1.2	Genesee	16-Dec	31-Mar	12-hours	585-753-7750	585-753-7780		
14832	Black Rock	Ferry Street	2.6	Black Rock	1-Dec	14-Apr	4-hours	716-866-4323			
14832	Black Rock	Canadian Natl	3.8	Black Rock	1-Dec	14-Apr	4-hours	289-683-6000	905-788-7502	905-351-3708	416-580-3320
14833	Buffalo	Michigan Ave	1.3	Buffalo River	16-Dec	21-Mar	04-hours	716-866-4323			
14833	Buffalo	Ohio St	2.1	Buffalo River	16-Dec	21-Mar	04-hours	716-866-4323			
14836	Ashtabula	5th Street	1.4	Ashtabula	15-Dec	31-Mar	12-Hours	440-576-2816	440-813-8229	440-228-2168	440-645-9041
14839	Cleveland	All City Bridges		Cuyahoga	19-Dec	20-Mar	12-Hours	VHF-FM 16	216-664-4767	<a href="mailto:Rscott@clevelandohio.gov">Rscott@clevelandohio.gov</a>	
14836	Ashtabula	NS RR	1.4	Ashtabula	30-Nov	1-Apr	24-hours	800-214-3609	470-463-1001	404-520-4138	
14841	Lorain	Charles Berry	0.6	Black River	1-Jan	31-Mar	12-hours	VHF-FM 16	440-244-2137		
14844	Port Clinton	Monroe St	0.4	Portage River	1-Dec	30-Apr	24-hours	419-409-0147	419-373-7050		
14844	Port Clinton	NS RR	1.5	Portage River	1-Dec	30-Apr	24-hours	419-254-1539			
14844	Sandusky	NS RR	3.5	Sandusky	1-Dec	31-Mar	24-hours	419-254-1539			
14846	Toledo	CSX RR	1.07	Maumee	21-Dec	31-Dec	04-hours	419-729-4321	419-697-2307		
14846	Toledo	CSX RR	1.07	Maumee	31-Dec	31-Mar	12-hours	419-729-4321	419-697-2307		
14846	Toledo	W&LE	1.8	Maumee	21-Dec	31-Dec	04-hours	330-767-7211	330-767-7215		
14846	Toledo	W&LE	1.8	Maumee	31-Dec	31-Mar	12-hours	330-767-7211	330-767-7215		
14846	Toledo	Craig Mem	3.3	Maumee	21-Dec	31-Dec	04-hours	419-409-0147	419-373-7050		
14846	Toledo	MLK	4.3	Maumee	21-Dec	31-Dec	04-hours	419-467-3558	419-346-8653	567-970-0508	
14846	Toledo	MLK	4.3	Maumee	1-Jan	31-Mar	12-hours	419-467-3558	419-346-8653	567-970-0508	
14846	Toledo	NS RR	5.76	Maumee	21-Dec	31-Mar	12-hours	419-254-1539			
14848	St. Clair	M29	0.1	Pine River	1-Dec	31-Mar	24-hours	810-941-7819			
14848	Detroit	Grosse Ile Free	5.6	Detroit River	15-Dec	15-Mar	12-hours	734-955-2172	888-762-3273	313-737-9837	
14848	Detroit	Grosse Ile Toll	8.8	Detroit River	15-Dec	15-Mar	12-hours	734-282-2914			
14854	Detroit	W. Jefferson	1.1	River Rouge	1-Jan	31-Mar	12-Hours	734-282-2914			
14854	Detroit	Conrail	1.48	River Rouge	1-Jan	31-Mar	12-Hours				
14854	Detroit	NS RR	1.87	River Rouge	1-Jan	31-Mar	12-Hours				

lee.d.soule@uscg.mil

216-902-6085

Sorted by Chart Number

## Authorized Winter Hours for Great Lakes Bridges

October 15, 2023 - April 30, 2024

Last Updated: 02 FEB 2024

14854	Detroit	Fort Street	2.2	River Rouge	1-Jan	31-Mar	12-Hours	313-842-4791	313-828-2487	231-884-5211
14854	Detroit	Dix Ave	2.73	River Rouge	1-Jan	31-Mar	12-Hours	734-282-2914	734-282-2914	
14864	Alpena	2nd Ave	0.3	Thunder Bay	1-Jan	31-Dec	03-hours	989-464-3416		
14865	Port Huron	Canadian Natl	1.56	Black River	1-Nov	30-Apr	12-hours	708-332-3002	708-332-3160	810-240-6390
14865	Port Huron	Military St	0.3	Black River	1-Nov	30-Apr	12-hours	810-984-9730	810-985-8115	
14865	Port Huron	Seventh St	0.5	Black River	1-Nov	30-Apr	12-hours	810-984-9730	810-985-8115	
14865	Port Huron	Tenth St	0.9	Black River	1-Nov	30-Apr	12-hours	810-984-9730	810-985-8115	
14867	Bay City	Lake State RR	3.1	Saginaw	1-Jan	31-Mar	12-hours	989-393-9815	989-387-3941	Emergency: 989-393-2988
14867	Bay City	Cen. Mich. RR	4.94	Saginaw	1-Jan	31-Mar	12-hours	989-274-1381	989-439-3251	989-717-0013
14867	Bay City	Independence	3.88	Saginaw	1-Jan	31-Mar	12-hours	989-737-3793		
14867	Bay City	Liberty	4.99	Saginaw	1-Jan	31-Mar	12-hours	989-737-3793		
14867	Bay City	Veterans Mem	5.6	Saginaw	1-Jan	31-Mar	12-hours	989-737-3793		
14867	Bay City	Lafayette	6.78	Saginaw	1-Jan	31-Mar	12-hours	989-737-3793		
14884	SOO	Canadian Natl	1	SOO LOCKS	Special	Special	Special	708-332-3002	708-332-3160	920-539-2043
14886	Cheboygan	US23	0.9	Cheboygan	1-Dec	31-Apr	12-hours	231-238-7775	231-420-1153	231-420-1157
14906	South Haven	Dyckman Ave	1.9	Black River	15-Oct	30-Apr	12-hours	269-637-0737	269-637-5151	
14916	Gills Landing	Canadian Natl	27.8	Wolf River	15-Oct	15-Apr	12-hours	708-332-3002	708-332-3160	920-539-2043
14916	Menasha	HWY Bridges	xx	Fox River	8-Oct	26-Apr	12-hours	920-209-4032		
14916	Oshkosh	Canadian Natl	55.72	Fox River	8-Oct	26-Apr	12-hours	708-332-3002	708-332-3160	920-539-2043
14916	Oshkosh	HWY Bridges	xx	Fox River	8-Oct	26-Apr	12-hours	920-420-2146		
14917	Marinette	Ogden-First	0.4	Menominee	1-Nov	30-Apr	12-hours	715-923-0999		
14918	Green Bay	Fox Valley & Superior	1.03	Fox River	1-Dec	31-Mar	12-hours	414-750-5676		
14918	Green Bay	Main Street	1.58	Fox River	1-Dec	31-Mar	12-hours	920-655-0339	920-448-3321	920-764-2964
14918	Green Bay	Walnut Street	1.81	Fox River	1-Dec	31-Mar	12-hours	920-655-0339	920-448-3321	920-764-2964
14918	Green Bay	Tillman Mem.	2.27	Fox River	1-Dec	31-Mar	12-hours	920-655-0339	920-448-3321	920-764-2964
14918	Green Bay	Fox Valley & Lake Superior	3.31	Fox River	1-Dec	31-Mar	12-hours	414-750-5676		
14919	Sturgeon Bay	Bayview 42/57	3	Sturgeon Bay	1-Dec	14-Mar	12-hours	920-746-0187	920-493-8518	
14919	Sturgeon Bay	Maple-Oregon	4.17	Sturgeon Bay	1-Jan	14-Mar	12-hours	920-746-0187	920-493-8518	
14919	Sturgeon Bay	Michigan St.	4.3	Sturgeon Bay	1-Jan	14-Mar	12-hours	920-746-0187	920-493-8518	
14922	Manitowoc	Eighth Street	0.29	Manitowoc	1-Nov	31-Mar	12-hours	920-686-6910	920-683-4470	920-374-0403

lee.d.soule@uscg.mil

216-902-6085

Sorted by Chart Number

Authorized Winter Hours for Great Lakes Bridges

October 15, 2023 - April 30, 2024

Last Updated: 02 FEB 2024

14922	Manitowoc	Tenth Street	0.43	Manitowoc	1-Nov	31-Mar	12-hours	920-686-6910	920-683-4470	920-374-0403	
14922	Sheboygan	Eighth Street	0.69	Sheboygan	1-Nov	30-Apr	12-hours	920-207-9742			
14924	Milwaukee	All City Owned	1.28	Milwaukee	2-Nov	15-Apr	12-Hours	VHF-FM 16	414-286-2575	VHF-174-1411	
14924	Milwaukee	Canadian Pac	1.05	Menominee	2-Nov	16-Apr	12-Hours	414-389-3772			
14924	Milwaukee	Canadian Pac	1.67	Kinnickinnic	2-Nov	16-Apr	12-Hours	414-389-3772			
14924	Milwaukee	All City Owned	1.08	Menominee	2-Nov	16-Apr	12-Hours	VHF-FM 16	414-286-2575	VHF-174-1411	
14924	Milwaukee	All City Owned	1.96	Burnham	2-Nov	16-Apr	12-Hours	VHF-FM 16	414-286-2575	VHF-174-1411	
14924	Milwaukee	All City Owned	1.67	Kinnickinnic	2-Nov	16-Apr	12-Hours	VHF-FM 16	414-286-2575	VHF-174-1411	
14925	Racine	Main	.31/.5	Root River	1-Dec	1-Apr	2-Hours	262-886-2300			
14925	Racine	State	0.53	Root River	16-Oct	30-Apr	2-Hours	262-886-2300			
14926	Michigan City	Franklin St	0.5	Trail Creek	1-Dec	15-Mar	12-hours	219-362-6205			
14926	Michigan City	Amtrak RR	0.9	Trail Creek	1-Dec	15-Mar	12-hours	517-581-3340	269-687-2205	312-656-9111	269-985-3680
14927	Chicago	All City Owned		Chicago	1-Dec	31-Mar	48-hours*	312-744-4200	312-747-2470	312-744-4280	
14929	Indiana Harbor	Indianapolis	2.59	Ind Hbr C.	1-Jan	31-Dec	12-hours	317-899-8690, Option 1			
14930	St. Joe	CSX RR	0.67	St. Joe	16-Dec	28-Feb	12-hours	260-409-4420			
14930	St. Joe	Blossomland	0.9	St. Joe	16-Dec	28-Feb	12-hours	231-884-5211			
14930	St. Joe	Bicentennial	1.3	St. Joe	16-Dec	28-Feb	12-hours	231-884-5211			
14933	Grand Haven	CSX RR	2.8	Grand River	2-Dec	15-Mar	12-hours	616-293-0564	231-830-7706		
14933	Grand Haven	US 31	2.9	Grand River	15-Dec	15-Mar	12-hours	989-233-1053			
14938	Manistee	Maple St	1.1	Manistee	1-Nov	30-Apr	24-hours	231-723-6241			
14938	Manistee	US 31	1.4	Manistee	1-Nov	30-Apr	24-hours	231-723-6241	SEE LNM	SEE LNM	SEE LNM
14938	Manistee	CSX RR	1.5	Manistee	1-Nov	30-Apr	24-hours	231-794-7679	616-293-0564		
14942	Charlevoix	Bridge Street	0.3	Pine River	1-Jan	31-Mar	12-hours	231-342-8713			
14972	Keweenaw	US 41	16	Keweenaw	14-Dec	14-Apr	12-hours	906-482-7552			
14975	Duluth	Aerial	0.25	Ship Canal	1-Jan	15-Mar	12-hours	218-723-3387	218-343-0395	218-194-0401	
14975	Duluth	BNSF\Grassy PT	5.44	St. Louis	15-Dec	15-Mar	12-hours	715-394-1259	715-394-1257	715-154-5451	

Sorted by Chart Number

Authorized Winter Hours for Great Lakes Bridges  
October 15, 2023 - April 30, 2024

Last Updated: 02 FEB 2024

<b>14998</b>	<b>Rainer</b>	<b>Canadian Natl</b>	<b>85</b>	<b>Rainy River</b>	<b>16-Oct</b>	<b>30-Apr</b>	<b>12-hours</b>	<b>708-332-3002</b>	<b>708-332-3160</b>	<b>218-348-5338</b>
								*****	Hours not	requested
								Note 1	0800-1600	Open On Signal
								Note 2	0700-2300	Open On Signal
								*	12-Hours	Commercial
								Special		See Lock
										Schedule
								See LNM		Maintenance
										Scheduled
								**	Cell Phone	You can TEXT

(Revised 04/23) NINTH DISTRICT DRAWBRIDGE SIGNALS OR OPERATIONAL DELAYS FORM

TO: Commander (dpb)  
Ninth Coast Guard District  
1240 E. 9<sup>th</sup> Street – Room 2047b  
Cleveland, Ohio 44199-2060  
Phone: (216) 902-6087  
Fax: (216) 902-6088  
E-Mail: [William.B.Stanifer@uscg.mil](mailto:William.B.Stanifer@uscg.mil), [Lee.D.Soule@uscg.mil](mailto:Lee.D.Soule@uscg.mil), and [Michael.O.Walker2@uscg.mil](mailto:Michael.O.Walker2@uscg.mil)

DATE: \_\_\_\_\_  
*NOTE: Reports of Delay will be processed only when all items are fully addressed and reports submitted within 15 days of reported delay / difficulty. Attach additional sheets if necessary.*

CONFIDENTIALITY: Please check here if you wish to keep names of vessels and persons confidential

1. DATE OF DELAY: \_\_\_\_\_ 2. VESSEL NAME: \_\_\_\_\_ 3.  INBOUND  OUTBOUND

(\*\*\*NOTE: You must provide the following from Coast Pilot 6.\*\*\*)

4. BRIDGE NAME \_\_\_\_\_ 5. WATERWAY \_\_\_\_\_

6. MILE MARKER \_\_\_\_\_

7. WHAT TIME DID YOU ARRIVE AT THE BRIDGE? \_\_\_\_\_ 8. DID YOU SIGNAL FOR AN OPENING AT THAT TIME?  Y  N

9. HOW DID YOU SIGNAL?  Sound signal (Whistle, horn, megaphone, hailer, etc.) \_\_\_\_\_

(Check all that apply)  Visual signal (Flag or Light) \_\_\_\_\_

Radio telephone (Specify Frequency) \_\_\_\_\_

10. WHEN DID THE BRIDGE REPLY? \_\_\_\_\_ 11. WHAT DID THE DRAWTENDER SAY? \_\_\_\_\_

12. DID YOU COMMUNICATE WITH THE BRIDGE AFTER YOUR ARRIVAL? PLEASE PROVIDE DETAILS INCLUDING TIMES, WHAT YOU SAID, AND WHAT THE BRIDGE SAID? \_\_\_\_\_

13. WHAT TIME DID THE BRIDGE OPEN? \_\_\_\_\_ 14. WHAT TIME DID YOU START THROUGH? \_\_\_\_\_

15. WHAT TIME DID YOU CLEAR? \_\_\_\_\_ 16. WHAT ACTIONS DID YOU TAKE WHILE YOU WAITED FOR THE BRIDGE TO OPEN (e.g. tie up, hold position, use thrusters, return to dock)? \_\_\_\_\_

17. DESCRIBE ANY WEATHER OR WATER CONDITIONS THAT AFFECTED MANUEVERABILITY WHILE YOU WAITED? \_\_\_\_\_

18. DESCRIBE WHETHER ANY PEDESTRIANS, VEHICLES, OR TRAINS WERE STOPPED ON THE BRIDGE OR CROSSING THE BRIDGE? PROVIDE AS MUCH DETAIL AS POSSIBLE. \_\_\_\_\_

19. PROVIDE ANY ADDITIONAL INFORMATION YOU THINK WOULD BE HELPFUL? \_\_\_\_\_

20. YOUR NAME, E-MAIL, PHONE NUMBER, AND ADDRESS: \_\_\_\_\_

\_\_\_\_\_  
SIGNATURE OF REPORTING SOURCE



TO: Commander (dpb)  
Ninth Coast Guard District  
1240 E. 9<sup>th</sup> Street – Room 2047b  
Cleveland, Ohio 44199-2060  
Phone: (216) 902-6087  
Fax: (216) 902-6088  
E-Mail: [William.B.Stanifer@uscg.mil](mailto:William.B.Stanifer@uscg.mil), [Lee.D.Soule@uscg.mil](mailto:Lee.D.Soule@uscg.mil), and [Michael.O.Walker2@uscg.mil](mailto:Michael.O.Walker2@uscg.mil)

DATE: \_\_\_\_\_

*NOTE: Reports of Delay will be processed only when all items are fully addressed and reports submitted within 15 days of reported delay / difficulty. Attach additional sheets if necessary.*

PLEASE USE THIS FORM TO PROVIDE ANY ADDITIONAL INFORMATION? \_\_\_\_\_

\_\_\_\_\_

\_\_\_\_\_

\_\_\_\_\_

\_\_\_\_\_

\_\_\_\_\_

\_\_\_\_\_

\_\_\_\_\_

\_\_\_\_\_

\_\_\_\_\_

\_\_\_\_\_

\_\_\_\_\_

\_\_\_\_\_

\_\_\_\_\_

\_\_\_\_\_

\_\_\_\_\_

\_\_\_\_\_

\_\_\_\_\_

\_\_\_\_\_

\_\_\_\_\_

\_\_\_\_\_

\_\_\_\_\_

\_\_\_\_\_

\_\_\_\_\_

YOUR NAME, E-MAIL, PHONE NUMBER, AND ADDRESS: \_\_\_\_\_

\_\_\_\_\_

\_\_\_\_\_  
SIGNATURE OF REPORTING SOURCE



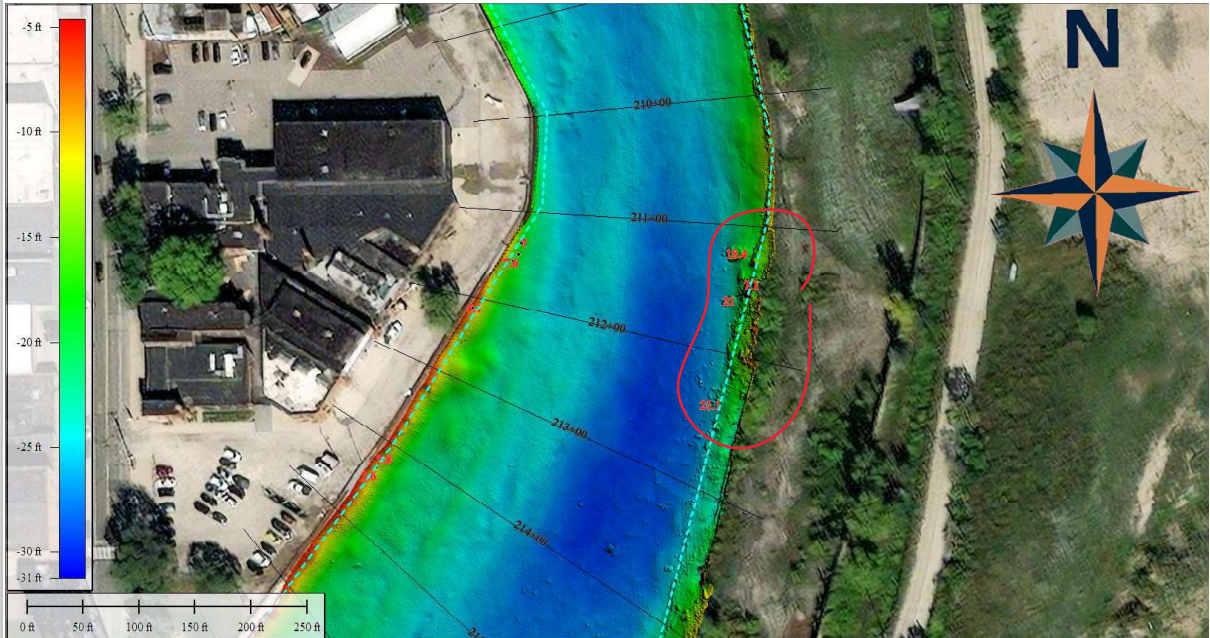
# CHANNEL OBSTRUCTION REPORT

## U.S. Army Corps of Engineers – Buffalo District

PROJECT NAME: Cuyahoga River  
 DATE OBSERVED: 12/07/2023  
 CREW: D. Banning, D. Bognar

OBJECT: Multiple unknown  
 LATITUDE: 41° 29' 23.1785" N  
 LONGITUDE: 81° 41' 54.1661" W

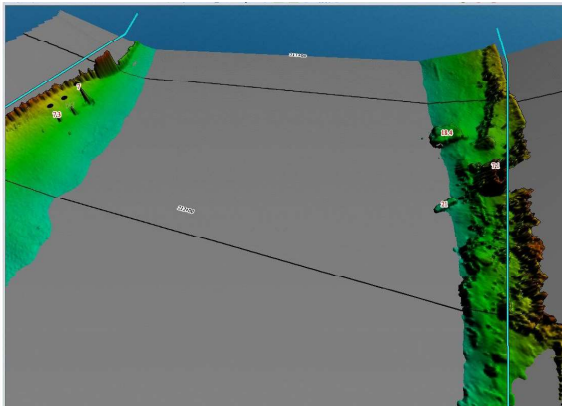
### SURVEY DATA



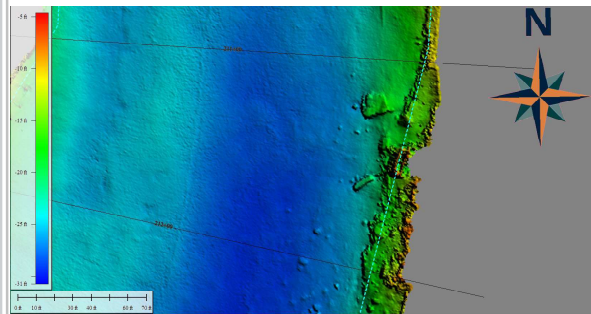
Multiple objects along easterly edge of Federal Channel between Sta. 211+00 & 213+00. Object Depths shown in red. Federal Channel shown in cyan.

View: NE down channel line

Hypack Channel View



3D view of channel bottom showing only areas that are shoaler than project depth of 23ft.



Close up view of area.

Waterway Analysis and Management System Survey

Name of Waterway: \_\_\_\_\_

User Information

\_\_\_ Commercial User

\_\_\_ Recreational User

Number of years in the maritime industry or number of years using this waterway: \_\_\_\_\_

Number of transits in the waterway per year: \_\_\_\_\_

Number of night transits of waterway: \_\_\_\_\_

Seasonal Dates: Start: \_\_\_\_\_ End: \_\_\_\_\_

Name of Vessel: \_\_\_\_\_

Vessel Description: \_\_\_\_\_

Length: \_\_\_\_\_ Beam: \_\_\_\_\_ Draft: \_\_\_\_\_ Gross Tons: \_\_\_\_\_

Net Tons: \_\_\_\_\_ Bridge Height of Eye: \_\_\_\_\_

Cargo Carried: \_\_\_\_\_

Navigational tools used: (ECDIS/ECPINS, GPS, DGPS, VISUAL, RADAR) \_\_\_\_\_  
\_\_\_\_\_  
\_\_\_\_\_

What area do you believe is the most dangerous or difficult to navigate: \_\_\_\_\_  
\_\_\_\_\_  
\_\_\_\_\_

Are the floating aids to navigation (lighted and unlighted buoys) adequate for this waterway: \_\_\_\_\_

---

---

---

Are the fixed aids to navigation (lights, ranges, lighthouses, daybeacons) adequate for this waterway: \_\_\_\_\_

---

---

---

Are the year round and lighted ice buoys adequate: \_\_\_\_\_

---

---

---

Are there buoys that you feel should be changed to fixed aids to navigation?

---

---

---

---

---

---

Are there any buoys that could be eliminated from this waterway: \_\_\_\_\_

---

---

---

Are there any buoys with sound signals that the bell or gong could be removed:

---

---

---

Are there any areas that require additional aids to navigation in this waterway:

---

---

---

Do the nautical charts, Coast Pilot, and Light List meet your needs for this waterway: \_\_\_\_\_

---

---

---

Are there private Aids to Navigation that you find misleading or interfere with the current system in the waterway:

---

---

---

Any addition comments on this waterway: \_\_\_\_\_

---

---

---

---

Thank you for taking time to comment on this waterway. Your input as a mariner very valuable to the U. S. Coast Guard in evaluating waterways to make them safe and as easily navigable as possible. Please feel free to contact [D09-DG-District-D9-ATON-Support@uscg.mil](mailto:D09-DG-District-D9-ATON-Support@uscg.mil) with any other questions or concerns about any aids to navigation in the Great Lakes. The survey can be mailed to:

Commander (dpw-2)  
Ninth Coast Guard District  
1240 East Ninth Street  
Cleveland, Ohio 44199

---