



U.S. Department
of Homeland Security
**United States
Coast Guard**

LOCAL NOTICE TO MARINERS

District 8 MRS

Week: 23/24

Mississippi River System

LIGHT LIST VOLUME V
NOTICE NUMBER 23-24
June 5, 2024

LIGHT LIST REFERENCE: COMDTPUB P16502.5, Vol V, 2024 Edition.

CONTENTS: Rivers are listed in alphabetical order and are included only when there is information to report.
Broadcast Notice to Mariners Covered in this Edition

Originating Unit	Beginning BNM's	Ending BNM's
Sector Upper Mississippi River	0055 - 24 (UM)	0078 - 24 (UM)
Sector Lower Mississippi River	0011 - 24 (LM)	0011 - 24 (LM)
Sector Ohio Valley	0309 - 24 (OV)	0323 - 24 (OV)
OB DWB	0050 - 24 (DWB)	0064 - 24 (DWB)

COAST GUARD DISTRICT 8, WATERWAYS, (504) 671-2327, 7:00 a.m. until 3:30 p.m. (CST)

GENERAL LNM QUESTIONS, COMMENTS, OR SUGGESTIONS MAY BE E-MAILED TO: D8MarineInfo@uscg.mil
COMMENTS REGARDING SECTION VI – PROPOSED CHANGES MAY ALSO BE EMAILED TO: LocalNoticeFeedback@uscg.mil
NIS WATCHSTANDER PHONE (703) 313-5900, 24-HOURS A DAY

INTERNET ADDRESS <https://www.navcen.uscg.gov/>

MISSISSIPPI RIVER SYSTEM LNM VIA INTERNET <https://www.navcen.uscg.gov/>

MISSISSIPPI RIVER SYSTEM LIGHT LIST VIA INTERNET https://www.navcen.uscg.gov/pdf/lightLists/LightList_V5_2024.pdf

ABBREVIATIONS

A through H

ADRIFT - Buoy Adrift
AICW - Atlantic Intracoastal Waterway
Al - Alternating
B - Buoy
BKW - Breakwater
bl - Blast
BNM - Broadcast Notice to Mariner
bu - Blue
C - Canadian
CHAN - Channel
CGD - Coast Guard District
C/O - Cut Off
CONT - Contour
CRK - Creek
CONST - Construction
DAYMK/Daymk - Daymark
DBN/Dbn - Daybeacon
DBD/DAYBD - Dayboard
DEFAC - Defaced
DEST - Destroyed
DISCON - Discontinued
DMGD/DAMGD - Damaged
ec - eclipse
EST - Established Aid
ev - every
EVAL - Evaluation
EXT - Extinguished
F - Fixed
fl - flash
Fl - Flashing
G - Green
GIWW - Gulf Intracoastal Waterway
HAZ - Hazard to Navigation
HBR - Harbor
HOR - Horizontal Clearance

I through O

I - Interrupted
ICW - Intracoastal Waterway
IMCH - Improper Characteristic
INL - Inlet
INOP - Not Operating
INT - Intensity
ISL - Islet
Iso - Isophase
kHz - Kilohertz
LAT - Latitude
LB - Lighted Buoy
LBB - Lighted Bell Buoy
LHB - Lighted Horn Buoy
LGB - Lighted Gong Buoy
LONG - Longitude
LNM - Local Notice to Mariners
LT - Light
LT CONT - Light Continuous
LTR - Letter
LWB - Lighted Whistle Buoy
LWP - Left Watching Properly
MHz - Megahertz
MISS/MSNG - Missing
Mo - Morse Code
MRASS - Marine Radio Activated Sound Signal
MSLD - Misleading
N/C - Not Charted
NGA - National Geospatial-Intelligence Agency
NO/NUM - Number
NOS - National Ocean Service
NW - Notice Writer
OBSCU - Obscured
OBST - Obstruction
OBSTR - Obstruction
Oc - Occulting

P through Z

PRIV - Private Aid
Q - Quick
R - Red
RACON - Radar Transponder Beacon
Ra ref - Radar reflector
RBN - Radio Beacon
REBUILT - Aid Rebuilt
RECOVERED - Aid Recovered
RED - Red Buoy
REFL - Reflective
RRL - Range Rear Light
RELIGHTED - Aid Relit
RELOC - Relocated
RESET ON STATION - Aid Reset on Station
RFL - Range Front Light
RIV - River
RRASS - Remote Radio Activated Sound Signal
s - seconds
SEC - Section
SHL - Shoaling
si - silent
SIG - Signal
SND - Sound
SPM - Single Point Mooring Buoy
SS - Sound Signal
STA - Station
STRUCT - Structure
St M - Statute Mile
TEMP - Temporary Aid Change
TMK - Topmark
TRLB - Temporarily Replaced by Lighted Buoy
TRLT - Temporarily Replaced by Light
TRUB - Temporarily Replaced by Unlighted Buoy
USACE - Army Corps of Engineers
W - White

Additional Abbreviations Specific to this LNM Edition:

RIAC - River Industry Action Committee
 MMSI - Mobile Maritime Service Identity
 AIS - Automatic Identification System
 ATON - Aids To Navigation
 COTP - Captain of The Port
 TRDBN - Temporarily Replaced by Daybeacon
 C.F.S. - Cubic Feet per Second
 CFR - Code of Federal Regulations
 IAW - In Accordance With
 H.P. - Horse Power
 MPH - Miles Per Hour
 TVA - Tennessee Valley Authority
 INC - Incorporated
 IENC - Inland Electronic Navigation Chart
 WAP - Waterway Action Plan
 MSIB - Marine Safety Information Bulletin
 L/D - Lock and Dam

SECTION I - SPECIAL NOTICES

This section contains information of special concern to the Mariner.

DEPARTMENT OF HOMELAND SECURITY SUSPICIOUS ACTIVITY

The Department of Homeland Security (DHS) encourages the maritime public to report information concerning suspicious activity to the local Federal Bureau of Investigation Joint Terrorism Task Force (JTTF) Office, http://www.fbi.gov/about-us/investigate/terrorism/terrorism_jtfts, or to other appropriate authorities. The U.S. Coast Guard reminds the maritime industry that they may also report information concerning suspicious activity to the www.AmericasWaterwayWatch.org, the National Response Center (NRC) 1-800-424-8802 or 1-877-24WATCH.

LNM: 02-19

GPS TESTING

At times, throughout our area of responsibility, multiple U.S. Government Agencies conduct GPS testing. These tests vary in duration, affected range from the test site and potential impact to the maritime user as they may affect systems that rely on GPS such as E-911, AIS and DSC. More information is available at the U.S. Coast Guard Navigation Center Website, <https://www.navcen.uscg.gov>. During these periods, GPS users are encouraged to report any GPS outages that they may experience, to the Navigation Information Service (NIS) by calling (703) 313-5900 or by using the NAVCEN Website to submit a GPS problem report.

LNM: 07-19

USACE - NEW REGULATORY REQUEST SYSTEM (RRS) ONLINE PERMIT APPLICATION PORTAL

The U.S. Army Corps of Engineers announced that the new national online application portal and management platform, known as the Regulatory Request System (RRS), now includes an electronic submission option for permit applications. This platform has been introduced to modernize the USACE permit application process and to address users' expectations by providing a straightforward and transparent process for the submittal of permit requests. For additional information or to provide feedback on RRS, please contact the USACE using the following email: <mailto:rrs@usace.army.mil>

LNM: 21-24

HIGH/LOW WATER FLOW CONDITIONS

During periods of high/low water flow conditions on the Mississippi River System, Captains of the Port, will issue Safety Advisories for their specific areas of responsibility via Broadcast Notice to Mariners. Mariners are encouraged to monitor the Sector Broadcast Notice to Mariners to ensure they are receiving the most up-to-date information.

LNM: 04-23

SUNSET OF NOAA PRINTED CHARTS

**** Cancellation of NOAA Paper and Raster Nautical Charts ****

The National Oceanic and Atmospheric Administration (NOAA) is undertaking a multi-year program to end production and maintenance of its suite of over 1,000 traditional paper nautical charts and all associated raster chart products and services, including: Print-on-Demand (POD) paper nautical charts, Full-size chart PDF files, BookletChart™ PDF files, NOAA raster navigational charts (NOAA RNC®), the NOAA RNC tile service, and the online RNC viewer.

Six months notice of the intent to cancel a specific chart is provided in a "Last Edition" notice. The final cancellation of a chart is made in a "Canceled" notice. Both types of notices will appear in LNM Section IV, "Chart Correction". Canceled charts do not meet U.S. Coast Guard carriage requirements. A comprehensive list of all canceled NOAA charts is available at: <http://www.charts.noaa.gov/MCD/Dole.shtml>.

Traditional paper nautical chart production is ending to enable the creation and maintenance of larger scale, more up-to-date, higher quality coverage of NOAA's electronic navigational chart (NOAA ENC®) product. This will significantly enhance the amount of charted detail available to mariners. More information about NOAA's program to sunset traditional paper charts is on the NOAA Coast Survey website at: <https://nauticalcharts.noaa.gov/charts/farewell-to-traditional-nautical-charts.html>.

An online NOAA Custom Chart application at: <https://devgis.charttools.noaa.gov/pod> is available to create chart images from ENC data, which may then be printed. Notices to Mariners will not be issued for NOAA Custom Charts.

LNM: 04-24

OHIO RIVER - L/D CLOSURES

Attached as an enclosure to this LNM, is USACE Louisville District Notice to Navigation 2024-001, 2024 scheduled lock outages.

LNM: 15-24

TENNESSEE RIVER/CUMBERLAND RIVER - JUNE MARINE EVENTS/PLANNED RIVER CLOSURES

Attached as an enclosure to this LNM is U.S. Coast Guard Marine Safety Detachment Nashville's notice of marine events and planned river closures for June.

LNM: 23-24

SECTION II - DISCREPANCIES

This section lists all reported and corrected discrepancies related to Aids to Navigation in this edition. A discrepancy is a change in the status of an aid to navigation that differs from what is published or charted.

DISCREPANCIES (FEDERAL AIDS)

LLNR	Aid Name	Status	Chart No.	BNM Ref.	LNM St	LNM End
990	Milligan Bend Light	STRUCT DEST		0642LM	51/19	
1010	Webber Falls Jetty Light	STRUCT DEST		0641LM	51/19	
1020	Bluff View Light	STRUCT DEST		0640LM	51/19	
1055	Hisaw Bottom Light	LT EXT		0196LM	40/18	
1070	Brier Creek Light	STRUCT DEST		0205LM	31/15	
1077	Sandtown Bottom Light	STRUCT DEST		0457LM	39/19	
1200	Black Rock Daybeacon	STRUCT DEST		0379LM	35/19	
1205	Gans Light	STRUCT DEST		0335LM	33/19	
1213	Non Lateral Mark 330.4	STRUCT DEST		0087LM	05/16	
1220	Onion Creek Daybeacon	STRUCT DMGD		0334LM	33/19	
1223	Non Lateral Mark 328.5	STRUCT DMGD		0333LM	33/19	
1225	Tucker Lake Light	STRUCT DEST		0332LM	33/19	
1230	Mcnabb Bottom Daybeacon	STRUCT DEST		0332LM	33/19	
1240	Deadman Slough Light	STRUCT DEST		0330LM	33/19	
1255	Wilsons Rock Light	STRUCT DMGD		0380LM	35/19	
1265	Peno Point Daybeacon	DAYMK DMGD		0580LM	47/19	
1267	Non Lateral Mark 313.9	STRUCT DEST		0089LM	05/16	
1315	Garrison Creek Daybeacon	DAYMK MISSING		0377LM	35/19	
1360	Crawford County Daybeacon	STRUCT DEST		0378LM	35/19	
1365	Jeffrey Light	DAYMK MISSING		0376LM	35/19	
1390	Fort Chaffee Light	STRUCT DEST		0579LM	47/19	
1395	Haroldton Light	DAYMK MISSING		0578LM	47/19	
1400	New Haroldton Light	STRUCT DEST		0574LM	47/19	
1420	Gun Club Lake Daybeacon	DAYMK MISSING		0582LM	47/19	
1427	Big Creek Daybeacon	DAYMK MISSING		0575LM	47/19	
1430	Arbuckle Island Light	STRUCT DEST		0091LM	05/16	
1435	Clear Creek Light	DAYMK MISSING		0584LM	41/19	
1445	Crooked Slough Light	STRUCT DEST		0583LM	47/19	
1455	Mulberry River Daybeacon	STRUCT DEST		0041UM	11/17	
1510	Moores Creek Light	LT IMCH/STRUCT DMGD		0394LM	44/16	

1515	Roseville Daybeacon	DAYMK MISSING	0604LM	50/19
1520	O'Kane Island Light	LT IMCH/STRUCT DMGD	0393LM	44/16
1525	Alix Bottom Light	STRUCT DEST	0605LM	50/19
1530	County Line Daybeacon	STRUCT DEST	0606LM	50/19
1532	Non Lateral Mark 246.3	DAYMK MISSING	0607LM	50/19
1562	Non Lateral Mark 236.3	DAYMK MISSING	0609LM	50/19
1605	Spadra Creek Light	DAYMK IMCH/STRUCT DMGD	0007LM	10/24
1615	Dublin Daybeacon	STRUCT DEST	0610LM	50/19
1650	Bunker Hill Upper Daybeacon	STRUCT DEST	0639LM	51/19
1660	Bunker Hill Lower Daybeacon	STRUCT DEST	0643LM	51/19
1695	Dardanelle Reach Light	DAYMK DMGD	0204LM	31/15
1697	Non Lateral Mark 201.4	STRUCT DEST	0200LM	41/18
1700	Elberta Light	DAYMK MISSING	0611LM	50/19
1708	Non Lateral Mark 197.9	STRUCT DEST	0052LM	13/17
1715	Hola Bend Cutoff Light	DAYMK MISSING	0614LM	50/19
1720	Carden Bottoms Light	DAYMK IMCH/STRUCT DMGD	0007LM	10/24
1735	Sweeden Island Light	LT EXT/DAYMK MISSING	0617LM	50/19
1745	Wilson Light	STRUCT DEST	0620LM	50/19
1770	Willow Bend Lower Daybeacon	DAYMK MISSING	0621LM	50/19
1795	Louisburg Light	DAYMK IMCH/STRUCT DMGD	0007LM	10/24
1798	Non Lateral Mark 175.6	DAYMK MISSING	0622LM	50/19
1815	Ellis Island Light	STRUCT DEST	0630LM	51/19
1845	Stane Reach Upper Daybeacon	DAYMK DMGD	0634LM	51/19
1850	Stane Reach Light	DAYMK DMGD	0635LM	51/19
1860	Cadron Creek Light	DAYMK IMCH/STRUCT DMGD	0007LM	10/24
1890	Belk Corner Light	DAYMK MISSING/STRUCT DMGD	0558LM	45/19
1903	Non Lateral Mark 150.9	DAYMK MISSING	0560LM	45/19
1915	Bigelow Middle Daybeacon	DAYMK DMGD	0563LM	45/19
1920	Bigelow Lower Light	DAYMK MISSING	0538LM	44/19
1930	Tri County Light	STRUCT DEST	0370LM	41/16
1948	Non Lateral Mark 138.8	DAYMK MISSING	0539LM	44/19
1953	Non Lateral Mark 137.6	DAYMK MISSING	0540LM	44/19
1960	Palarm Light	DAYMK MISSING	0541LM	44/19
1975	Maumelle River Upper Daybeacon	STRUCT DEST	0565LM	45/19
2030	Burns Park Light	STRUCT DEST	0514LM	42/19
2143	Non Lateral Mark 106.5	DAYMK MISSING	0637LM	51/19
2150	Fourche Bayou Light	DAYMK IMCH/STRUCT DMGD	0007LM	10/24
2155	Chenault Island Light	DAYMK IMCH/STRUCT DMGD	0007LM	10/24
2160	Estes Place Light	DAYMK IMCH/STRUCT DMGD	0396LM	44/16
2170	Jim Brown Island Light	DAYMK IMCH/STRUCT DMGD	0007LM	10/24
2199	Non Lateral Mark 92.0	STRUCT DEST	0398LM	44/16
2370	Ste. Marie Bend Lower Daybeacon	STRUCT DEST	0407LM	45/16
2435	Richland Bend Middle Daybeacon	STRUCT DEST	0099LM	16/18
2485	Little Bayou Meto Lower Daybeacon	DAYMK DMGD	0094LM	15/18
2498	Cummins Bend Daybeacon	STRUCT DEST	0103LM	06/16
2540	Sample Island Light	STRUCT DEST	0106LM	06/16
2550	Sample Island Lower Light	STRUCT DEST	0107LM	06/16
2665	Owens Lake Daybeacon	DAYMK DMGD	0110LM	06/16
3965	Watkins Daybeacon	STRUCT DEST	0245OV	19/17

4250	Shammels Mound Landing Light	STRUCT DEST	0010OV	02/16
4285	Saline Creek Light	STRUCT DEST/TRUB	0221OV	26/16
4315	Pryors Creek Light	STRUCT DEST	0030OV	02/20
4340	Devils Elbow Light	STRUCT DEST	0306OV	16/18
4365	Bleidt Landing Light	STRUCT DEST/TRUB	0137OV	17/21
4390	Crooked Creek Light	STRUCT DEST/TRUB	0383OV	36/16
4425	Commerce Landing Light	STRUCT DEST	0520OV	42/22
4450	Big Eddy Light	STRUCT DEST/TRUB	0244OV	17/24
4455	Prison Farm Landing Light	STRUCT DEST	0145OV	17/21
4500	Kuttawa Bar Light	STRUCT DEST	0243OV	12/18
4505	Money Cliff Light	STRUCT DEST	0364OV	19/18
6330	Lewis Daybeacon	STRUCT DEST	0121MI	22/24
6810	Halls Landing Daybeacon	STRUCT DMGD	0024MI	07/23
6885	Lacon Light	STRUCT DEST	0261UM	38/23
6905	Woodyard Creek Light	STRUCT DEST	0260UM	38/23
6930	Spring Branch Light	STRUCT DEST	0262UM	38/23
6985	Sand Point Lower Light	STRUCT DEST	0102UM	20/22
6990	Circle Light	STRUCT DMGD	0102UM	20/22
6995	Spring Bay Daybeacon	STRUCT DEST	0102UM	20/22
7035	Drolls Point Light	STRUCT DEST/TRLB	0233UM	23/20
7285	Pekin Daybeacon	DAYMK IMCH	0062UM	23/24
7355	Canton Landing Daybeacon	STRUCT DEST	0015UM	11/24
7385	Spring Lake Slough Light	LT EXT	0052UM	22/24
7510	Otter Creek Daybeacon	STRUCT DEST	0015UM	11/24
7555	Sangamon Chute Light	STRUCT DEST	0015UM	11/24
7585	Frederick Light	STRUCT DEST	0539UM	29/19
7650	Briggs Landing Light	STRUCT DEST	0015UM	12/24
7695	Moore's Island Light	STRUCT DEST	0037UM	12/22
7705	Wilson Island Daybeacon	DAYMK DMGD	0104UM	18/21
7755	Mcgees Creek Light	STRUCT DEST	0015UM	12/24
7850	Florence Light	LT EXT	0055UM	14/22
9150	Washita Point Light	LT EXT	0395LM	33/20
9185	Preston Peninsula Light	REDUCED INT	0420LM	46/16
10185	Cedar Point Light	REDUCED INT	0031LM	18/22
10195	Dean Island Light	REDUCED INT	0327LM	33/19
10210	Brandywine Chute Light	REDUCED INT	0031LM	18/22
10225	Island 40 Foot Light	STRUCT DEST	0232LM	49/18
10540	Harbert Point Light	LT EXT	0256LM	36/15
10545	Stumpy Point Light	STRUCT DEST	0249LM	52/18
10625	Delta Lower Light	STRUCT DEST	0118LM	06/16
10650	Miller Point Light	STRUCT DEST	0171LM	14/16
10660	Old Town Bend Foot Light	STRUCT DEST	0253LM	36/15
10685	Robson Light	STRUCT DEST	0116LM	06/16
10700	Sunflower Cut-Off Foot Light	STRUCT DEST	0115LM	06/16
10710	Ludlow Bar Light	DAYMK DMGD	0018LM	04/18
10715	Wood Cottage Light	STRUCT DEST	0114LM	06/16
10720	Knowlton Light	STRUCT DEST	0113LM	06/16
10730	Mason Landing Daybeacon	STRUCT DEST	0172LM	14/16
10815	Riverton Middle Bar Light	STRUCT DEST	0113LM	21/18

10885	Cypress Bend Light	STRUCT DEST	0032LM	07/18
10895	Eutaw Bar Light	STRUCT DEST	0365LM	35/19
10905	Mounds Crevasse Lower Light	STRUCT DEST	0114LM	21/18
10910	Boliver Light	STRUCT DEST	0069LM	11/18
10955	Miller Bend Light	STRUCT DEST	0030LM	06/18
10965	La Grange Towhead Light	STRUCT DEST	0367LM	35/19
11050	Vaucluse Bend Light	STRUCT DEST	0028LM	06/18
11070	Anconia Point Light	STRUCT DEST	0368LM	35/19
11080	Lakeport Light	STRUCT DEST	0369LM	35/19
11085	Walnut Point Light	STRUCT DEST	0370LM	35/19
11125	Corregidor Light	STRUCT DEST	0080LM	05/16
11130	Sarah Island Light	STRUCT DEST	0371LM	35/19
11170	Stack Island Light	STRUCT DEST	0372LM	35/19
11180	STACK ISLAND LOWER LIGHT	STRUCT DEST	0373LM	35/19
11195	Chinaman Light	STRUCT DEST	0374LM	35/19
11235	Goodrich Light	STRUCT DEST	0082LM	47/23
11245	Willow Point Light	DAYMK DMGD	0450LM	38/19
11270	Cabin Teele Light	STRUCT DEST	0452LM	38/19
11275	Marshall Point Cut-Off Daybeacon	STRUCT DEST	0453LM	38/19
11407	Coggins Light	STRUCT DEST	0296LM	29/16
11430	Sargent Point Light	LT IMCH/DAYMK DMGD	0465LM	39/19
11455	Buckridge Light	STRUCT DEST	0467LM	39/19
11505	Old Levee Light	LT IMCH/DAYMK DMGD	0470LM	39/19
11520	Ashland Light	LT IMCH/DAYMK DMGD	0471LM	39/19
11530	Hole In The Wall Light	LT IMCH/REDUCED INT	0472LM	39/19
11680	Bob Boles Light	STRUCT DEST		18/23
11700	Fort Adams Light	STRUCT DEST	0402LM	36/19
11795	Morganza Crevasse Light	STRUCT DEST	0400LM	36/19
11835	Bayou Sara Bend Light	STRUCT DEST	0399LM	36/19
11860	Port Hudson Light	STRUCT DEST	0581NO	36/19
11940	Ben Burman Light	STRUCT DEST	0549LM	44/19
12470	Strekfus Daybeacon	STRUCT DEST	0293UM	43/23
12600	Smiths Landing Daybeacon	STRUCT DEST	0293UM	43/23
13165	Lock 5A Light	STRUCT DEST/LT EXT	0270UM	39/23
13180	Winona Upper Light	STRUCT DEST	0035UM	16/24
13230	Island 74 Light	STRUCT DEST/TRUB	0380UM	34/20
13430	Root River Upper Light	STRUCT DEST/HAZ NAV	0172UM	20/20
13510	Perry Ruby Light	STRUCT DEST	0061UM	12/17
13720	Crooked Slough Head Daybeacon	STRUCT DEST/TRUB	0482UM	26/19
13725	Crooked Slough Head Light	STRUCT DEST/TRUB	0482UM	26/19
13765	Island 158 Daybeacon	STRUCT DEST	0271UM	39/23
13895	Clayton Daybeacon	STRUCT DEST	0310UM	43/22
13915	Clayton Lower Daybeacon	STRUCT DEST/TRUB	0240UM	31/18
14010	Cassville Upper Daybeacon	STRUCT DEST	0546UM	29/19
14030	Cassville Lower Light	STRUCT DEST	0546UM	29/19
14105	Maquoketa Island Light	STRUCT DEST	0460UM	25/19
14230	Nine-Mile Island Light	STRUCT DEST	0410LM	36/17
14260	Stone Slough Light	STRUCT DEST	0454UM	25/19
14275	Fever River Light	STRUCT DEST/TRUB	0485UM	45/18

14295	Pulaski Light	STRUCT DEST	0485UM	45/18
14385	Arnold Towhead Light	STRUCT DEST	0449UM	25/19
14445	Sabula Lower Light	STRUCT DEST	0446UM	25/19
14460	Smith Bay Light	STRUCT DEST	0048UM	13/22
14475	Elk River Light	DAYMK DMGD	0257LM	31/21
14960	Andalusia Island Light	STRUCT DEST/TRUB		12/24
15170	Edwards Island Upper Light	STRUCT DEST/TRUB	0403UM	26/16
15475	Waggoner PT Lighted Buoy	MISSING	0138UM	26/23
16110	Hastings Landing Daybeacon	STRUCT DMGD	0282UM	39/22
16910	Ste. Genevieve Island Light	STRUCT DEST	0557UM	30/19
17970	Fitzhugh Daybeacon	STRUCT DEST	0055UM	19/23
17975	Lower Blencoe Bend Daybeacon	STRUCT DEST	0055UM	19/23
17985	Wahle Daybeacon	STRUCT DEST	0055UM	19/23
18010	Little Sioux Reach Daybeacon	STRUCT DEST	0279UM	41/23
18025	Bullard Bend Daybeacon	STRUCT DEST	0279UM	41/23
18040	Peterson Cut-Off Upper Daybeacon	STRUCT DEST	0279UM	41/23
18055	Sandy Point Daybeacon	DAYMK IMCH	0279UM	41/23
18065	Tyson Bend Daybeacon	DAYMK IMCH	0279UM	41/23
18140	Dodds Daybeacon	DAYMK IMCH	0279UM	41/23
18170	Boyer River Daybeacon	STRUCT DEST	0279UM	41/23
18185	Pottawattamie Daybeacon	DAYMK IMCH	0279UM	41/23
18200	Pigeon Creek Bend Daybeacon	STRUCT DEST	0066UM	23/24
18205	Thornton Daybeacon	DAYMK IMCH	0279UM	41/23
18210	Lower Pigeon Creek Bend Daybeacon	DAYMK IMCH	0279UM	41/23
18270	Council Bend Upper Daybeacon	DAYMK IMCH	0279UM	41/23
18320	Omaha Bend Lower Daybeacon	STRUCT DEST	0279UM	41/23
18325	Gibson Bend Daybeacon	DAYMK IMCH	0279UM	41/23
18345	Manawa Daybeacon	DAYMK IMCH	0279UM	41/23
18380	Bellevue Reach Daybeacon	DAYMK IMCH	0279UM	41/23
18385	St Marys Daybeacon	DAYMK IMCH	0279UM	41/23
18390	Bellevue Reach Lower Daybeacon	DAYMK IMCH	0279UM	41/23
18395	St. Marys Lower Daybeacon	DAYMK IMCH	0279UM	41/23
18425	Platte River Lower Daybeacon	STRUCT DEST	0279UM	41/23
18430	North Daybeacon	STRUCT DEST	0279UM	41/23
18435	South Daybeacon	STRUCT DEST	0279UM	41/23
18440	Pollock Daybeacon	STRUCT DEST	0279UM	41/23
18465	Plattsmouth Daybeacon	STRUCT DEST	0279UM	41/23
18470	Tobacco Bend Daybeacon	DAYMK IMCH	0279UM	41/23
18480	Rock Bluff Daybeacon	STRUCT DEST	0279UM	41/23
18485	King Hill Quarry Daybeacon	STRUCT DEST	0279UM	41/23
18490	Calumet Bend Daybeacon	STRUCT DEST	0279UM	41/23
18495	Auldon Bar Daybeacon	STRUCT DEST	0279UM	41/23
18515	Fremont County Daybeacon	DAYMK IMCH	0279UM	41/23
18520	Jones Point Daybeacon	STRUCT DEST	0279UM	41/23
18530	Civil Bend Upper Daybeacon	STRUCT DEST	0279UM	41/23
18580	Nebraska Bend Daybeacon	DAYMK IMCH	0279UM	41/23
19120	Burr Oak Daybeacon	DAYMK IMCH	0279UM	41/23
19125	Dillon Creek Daybeacon	DAYMK IMCH	0279UM	41/23
19130	Bon Ton Daybeacon	DAYMK IMCH	0279UM	41/23

19135	Cut-Off 52 Daybeacon	DAYMK IMCH	0279UM	41/23
19140	Perry Daybeacon	DAYMK IMCH	0279UM	41/23
19145	St. Joseph Daybeacon	DAYMK IMCH	0279UM	41/23
19225	Stoney Daybeacon	DAYMK IMCH	0279UM	41/23
19230	Geary Daybeacon	DAYMK IMCH	0279UM	41/23
19240	Doniphan Upper Daybeacon	DAYMK IMCH	0279UM	41/23
19245	Doniphan Daybeacon	DAYMK IMCH	0279UM	41/23
19250	Rushville Daybeacon	STRUCT DEST	0279UM	41/23
19260	Mud Lake Daybeacon	DAYMK IMCH	0279UM	41/23
19310	Bean Lake Daybeacon	DAYMK IMCH	0279UM	41/23
19320	King Daybeacon	DAYMK IMCH	0279UM	41/23
19325	Oak Mills Daybeacon	DAYMK IMCH	0279UM	41/23
19330	Platte County Daybeacon	DAYMK IMCH	0279UM	41/23
19340	Jackson Daybeacon	STRUCT DEST	0279UM	41/23
19345	Iatan Bend Daybeacon	STRUCT DEST	0279UM	41/23
19365	Kickapoo Daybeacon	DAYMK IMCH	0279UM	41/23
19375	Weston Daybeacon	STRUCT DEST	0279UM	41/23
19385	Bee Creek Daybeacon	STRUCT DEST	0279UM	41/23
19390	Fort Leavenworth Daybeacon	DAYMK IMCH	0279UM	41/23
19400	Duck Lake Daybeacon	DAYMK IMCH	0279UM	41/23
19435	Leavenworth Bend Daybeacon	DAYMK IMCH	0279UM	41/23
19450	Delaware Daybeacon	DAYMK IMCH	0279UM	41/23
19455	Pope Upper Daybeacon	DAYMK IMCH	0279UM	41/23
19470	Pope Daybeacon	DAYMK IMCH	0279UM	41/23
19485	Waldrons Quarry Daybeacon	DAYMK IMCH	0279UM	41/23
19490	Pomeroy Upper Daybeacon	DAYMK IMCH	0279UM	41/23
19520	Burlington Daybeacon	DAYMK IMCH	0279UM	41/23
19525	Big Eddy Creek Daybeacon	DAYMK IMCH	0279UM	41/23
19575	Jersey Creek Daybeacon	DAYMK IMCH	0279UM	41/23
19650	City Dump Daybeacon	DAYMK IMCH	0279UM	41/23
19690	Randolph Bend Daybeacon	DAYMK IMCH	0279UM	41/23
19700	Hawthorn Daybeacon	DAYMK IMCH	0279UM	41/23
19725	Smoke Stack Daybeacon	DAYMK IMCH	0279UM	41/23
19730	Courtney Daybeacon	DAYMK IMCH	0279UM	41/23
19740	Liberty Daybeacon	DAYMK IMCH	0279UM	41/23
19745	Eton Daybeacon	DAYMK IMCH	0279UM	41/23
19790	Clay County Daybeacon	STRUCT DEST	0279UM	41/23
19800	Little Blue Daybeacon	DAYMK IMCH	0279UM	41/23
19810	Jackass Daybeacon	DAYMK IMCH	0279UM	41/23
19815	Jackass Lower Daybeacon	DAYMK IMCH	0279UM	41/23
20060	Bakers Bend Daybeacon	DAYMK IMCH	0279UM	41/23
20090	Malta Bend Slough Daybeacon	DAYMK IMCH	0279UM	41/23
20165	Harris Daybeacon	DAYMK IMCH	0279UM	41/23
20250	Little Missouri Bend Daybeacon	DAYMK MISSING	0078UM	23/24
20300	Chariton River Daybeacon	DAYMK IMCH	0077UM	23/24
20650	Arnolds Creek Daybeacon	DAYMK IMCH	0076UM	23/24
20715	State Prison Daybeacon	DAYMK IMCH	0075UM	23/24
20755	Cole County Daybeacon	DAYMK IMCH	0074UM	23/24
20805	Loose Creek Daybeacon	DAYMK IMCH	0073UM	23/24

20875	Stoner Island Daybeacon	STRUCT DEST	0072UM	23/24
21000	Bates Daybeacon	DAYMK IMCH	0071UM	23/24
21020	Franklin County Daybeacon	DAYMK IMCH	0070UM	23/24
21235	Monarch Daybeacon	STRUCT DEST	0069UM	23/24
21330	St. Charles Bend Upper Daybeacon	DAYMK IMCH	0068UM	23/24
21430	Cora Daybeacon	DAYMK IMCH	0067UM	23/24
25355	Sciotoville Light	LT EXT	0095OV	11/23
25895	Dayton Bar Light	DAYMK IMCH	0301OV	22/24
26047	Sunken Barge Lighted Buoy WR	MISSING	0519OV	51/21
26047	Sunken Barge Lighted Buoy WR	SINKING/LT EXT	0199OV	22/23
26355	Patriot Bend Light	LT EXT	0103OV	10/24
26375	Wileys Hollow Light	LT EXT	0104OV	10/24
26470	Notch Lick Light	STRUCT DEST	0210OV	23/21
27090	Wolf Creek Light	LT EXT	0064OV	05/22
27520	Robert Mann Light	STRUCT DEST	0269OV	21/22
27540	Water Works Light	STRUCT DMGD	0179OV	12/22
27610	Harris Landing Light	DAYMK MISSING	0095OV	09/24
27715	Diamond Island Upper Light	LT EXT	0093OV	09/24
27855	Graham Varble Light	STRUCT DEST	0134OV	17/21
27900	Bowlesville Mine Light	DAYMK MISSING	0094OV	09/24
27935	Dekoven Light	STRUCT DEST	0294OV	23/22
29231.34	Westdale Middle Daybeacon	STRUCT DEST/TRUB	0121LM	44/22
29241.25	Smith Island Lower Daybeacon	STRUCT DEST	0202LM	26/21
29272	Deloges Middle Daybeacon	DAYMK IMCH		36/20
29467	Hog Lake Daybeacon	STRUCT DEST		36/20
29618	Red River Entrance Light	STRUCT DEST		37/20
29665	Dry Cypress Daybeacon	STRUCT DEST		37/20
29690	Bayou Cocodrie Upper Daybeacon	STRUCT DEST		37/20
29695	Bayou Cocodrie Daybeacon	STRUCT DEST		37/20
29710	Grassy Lake Daybeacon	DAYMK MISSING		37/20
29725	Alligator Bayou Daybeacon	STRUCT DEST	0216LM	33/17
29750	Timber Lake Daybeacon	STRUCT DEST		37/20
29755	Naples Daybeacon	STRUCT DEST		37/20
29775	Three Rivers Junction Light	STRUCT DEST		37/20
29780	Barbre Daybeacon	STRUCT DEST		37/20
29785	Torras Daybeacon	STRUCT DEST		37/20
29795	Oak Grove Daybeacon	STRUCT DEST		37/20
29845	Houden Point Daybeacon	STRUCT DEST	0255UM	30/21
32140	Chambers Daybeacon	STRUCT DEST	0178OV	11/13
32170	Diamond Island Lower Daybeacon	STRUCT DEST	0177OV	11/13
32190	Savannah Bend Upper Daybeacon	STRUCT DEST	0039OV	04/23
32335	Brodies Landing Light	STRUCT DEST	0041OV	04/23
32350	Crooked Creek Light	STRUCT DEST	0042OV	04/23
32445	Sales Light	TRUB/STRUCT DEST	0269OV	19/14
32460	Reynoldsburg Island Light	STRUCT DEST/TRUB	0290OV	15/18
32465	Shirley Light	STRUCT DEST	0040OV	04/23
32480	Higgins Light	STRUCT DEST	0342OV	27/15
32510	Hurricane Creek Light	STRUCT DEST	0043OV	04/23
32530	Standing Rock Upper Light	STRUCT DEST	0658OV	41/13

32570	Fort Henry Light	STRUCT DEST	0160OV	19/21
32595	Blood River Light	STRUCT DEST/TRUB	0138OV	17/21
32600	Clyde Light	LT EXT	0581OV	44/15
32605	Newburg Light	STRUCT DEST	0362OV	29/15
32710	Twenty-One Mile Light	STRUCT DEST	0108OV	13/23
32715	Chottes Creek Light	STRUCT DEST	0107OV	13/23
32750	Haddock Ferry Light	LT EXT/DAYMK MISSING	0106OV	13/23
32765	Big Chain Light	STRUCT DEST	0105OV	13/23
32780	Mud Creek Light	STRUCT DEST	0036OV	04/23
32825	W. L. Berry Light	STRUCT DEST	0110OV	13/23

DISCREPANCIES (FEDERAL AIDS) CORRECTED

LLNR	Aid Name	Status	Chart No.	BNM Ref.	LNM St	LNM End
20055	Mische Daybeacon	WATCHING PROPERLY		0279UM	41/23	23/24
20070	Cranberry Daybeacon	WATCHING PROPERLY		0279UM	41/23	23/24
20085	Tamerlane Bend Daybeacon	WATCHING PROPERLY		0279UM	41/23	23/24
20570	Petite Saline Daybeacon	WATCHING PROPERLY		0279UM	41/23	23/24
20690	Jefferson City Upper Daybeacon	WATCHING PROPERLY		0279UM	41/23	23/24

DISCREPANCIES (PRIVATE AIDS)

LLNR	Aid Name	Status	Chart No.	BNM Ref.	LNM St	LNM End
1685	Oakley Dock Light	LT EXT		0307LM	44/14	
1690	Mobley Dock Light	LT EXT		0454LM	48/13	
2013	City of Little Rock No Wake Buoy	OFF STA		0015LM	21/23	
2100	Oakley Light	LT EXT		0520LM	42/19	
2337	Island Harbor Marina Light	LT EXT			45/16	
2340	Century Tube Lights (2)	LT EXT			45/16	
2400	Pickett And Davison Lights (2)	LT EXT		0481LM	50/13	
3725	Lakewood Marina Lights (4)	LT IMCH		0439OV	34/15	
3750	Dupont Dock Lights (2)	OFF STA/LT EXT		0305OV	26/15	
3795	Nashville Water Intake Lights (2)	LT EXT			44/11	
3805	Holnam Dock Lights (2)	LT EXT			44/11	
3815	Kerr-Mcgee Dock Lights (2)	LT EXT			44/11	
3820	Cohen Terminal Lights (2)	LT EXT			44/11	
3930	Alcoa Chemical Dock Lights (2)	MSLD SIG/LT EXT		0216OV	14/10	
3960	Hunter Marine Transport Dock Lights (2)	LT EXT			47/08	
3995	Riverview Marina Lights (2)	LT EXT			47/08	
4055	Clarksville Boat Club Dock Lights (2)	LT EXT		0533OV	34/12	
6170	Quantum Chemical Dock Lights (2)	LT EXT		0436UM	31/01	
6650	S. T. Services Terminal Lights (2)	LT EXT			41/14	
6695	Continental Grain Company Light	LT EXT			41/14	
7225	Cargo Carriers Dock Lights (2)	LT EXT			25/08	
7235	Pekin Boat Club Breakwater Light	LT EXT			05/16	
7250	Shell Dock Lights (2)	LT EXT		0123UM	16/02	
7255	Adm Growmark Mooring Light	LT EXT		0122UM	16/02	
7260	Sours Grain Tramway Light	LT EXT		0279UM	21/03	
7265	Tomen Dock Light	LT EXT			25/08	
7295	Adm Growmark Mooring Lights (3)	LT EXT		0281UM	21/03	

7460	Cargill Mooring Lights (2)	LT EXT	0284UM	21/03
7620	Cargill Dock Lights (2)	LT EXT		35/08
7725	Cargill Terminal Lights (2)	LT IMCH	0171UM	26/18
7730	Public Service Co. Dock Lights (6)	LT EXT	0119UM	20/18
7730	Public Service Co. Dock Lights (6)	LT IMCH	0171UM	26/18
7760	Adm Growmark Grain Elevator Lights (2)	LT IMCH	0171UM	26/18
9440	Black Dog Lights (5)	LT EXT	0185UM	43/16
9475	Pollution Control Station Light	LT EXT	0197UM	31/23
9965	Huffman Grain Light	STRUCT DEST	0131LM	08/16
10300	Cargill Dock Light	LT EXT	0361LM	34/01
10390	Peavey Lights (2)	LT EXT	0398LM	36/02
10395	Suburban Propane Dock Light	LT EXT	0396LM	36/02
10415	Western Tar Products Dock Light	LT EXT	0394LM	36/02
11943	Bear Industries Barge Dock Lights (4)	LT EXT	0600NO	30/17
11990	Riverside Dock Lights (2)	LT EXT	0695UM	40/01
12080	University Dock Lights (3)	LT EXT	0696UM	40/01
12215	Koch Fuel Dock Lights (2)	LT EXT		35/16
12320	Newport Terminal Lights (2)	LT EXT		35/16
12385	Shiely Dock Lights (2)	LT IMCH		35/16
12712	City of Red Wing Metering Station Special Light	MISSING		42/16
12768	Consolidated Grain and Barge Loading Dock Piling Lights (2)	MISSING		42/16
12930	Alma City Dock Light/Daymarks (3)	MISSING		42/16
13405	G. Heileman Brewery Dock Light	MISSING		42/16
14756	Isle Of Capri Casino Marina Daybeacon	MISSING		03/16
15345	Koch Nitrogen Dock Light	LT EXT		41/14
15425	Hall Towing Light	STRUCT DEST	0280UM	25/20
15822	Hannibal Intake Light	LT EXT	0358UM	32/20
16100	Jersey County Grain Dock Lights (2)	LT EXT		19/16
16205	Piasa Harbor Light	LT EXT	0131UM	22/15
16220	Con-Agra Mooring Lights (2)	LT EXT		21/16
16230	Alton Marina Breakwater Lights (3)	LT EXT	0131UM	22/15
16265	Amoco Dock Light	STRUCT DEST		35/09
16280	Amoco Dock Lights (4)	LT EXT		35/09
16310	Sioux City/New Orleans Terminal Light	STRUCT DEST		35/09
16380	Western Dock Lights (9)	LT IMCH		34/08
16390	Adm-Growmark Dock Lights (4)	LT EXT	0776UM	44/01
16430	Union Electric Coal Dock Lights (2)	LT EXT	0305UM	34/08
16445	Continental Cement Lights (2)	LT EXT	0305UM	34/08
16505	Peavey Company Dock Lights (3)	LT EXT	0305UM	34/08
16530	Cahokia Marine Terminal Lights (2)	LT EXT	0305UM	34/08
16540	Slay Bulk Terminal Lights (2)	LT EXT	0305UM	34/08
16545	Peavey Lights (3)	LT EXT	0305UM	34/08
16550	Eagle Marine Industries Light	LT IMCH	0305UM	34/08
16560	Phillips Pipeline Lights (2)	LT EXT	0305UM	34/08
16565	Growmark Dock Lights (2)	LT EXT	0305UM	34/08
16575	Eagle Marine Dock Lights (2)	LT EXT	0305UM	34/08
16600	J.H. Collier Barge Mooring Lights (2)	LT EXT	0305UM	34/08
16605	Clark Oil Refining Dock Lights (4)	LT EXT	0305UM	34/08

16609	Alcoa Foil Lights (2)	LT EXT	0305UM	34/08
16615	Hci Chemtech Dock Lights (2)	LT EXT	0305UM	34/08
16617	Semmaterials Terminal Lights (2)	LT EXT	0305UM	34/08
16630	American Commercial Dock Lights (2)	LT EXT	0305UM	34/08
16655	Bussen Terminal Light	LT EXT	0305UM	34/08
18700	Bunge Dock Lights (3)	MISSING/LT EXT		18/08
19185	St. Joseph L & P Dock Light	LT IMCH		17/08
19415	Leavenworth Water Intake Lights (2)	LT EXT	0104UM	39/07
19460	Smoot Grain Dock Lights (2)	LT EXT	0385UM	39/07
19505	Board Of Public Utilities Light	LT EXT	0386UM	39/07
19535	Public Utilities Intake Lights (3)	LT EXT		38/08
19660	Continental Grain Dock Lights (4)	LT EXT	0181UM	24/08
19695	Kansas City Power And Light Company Lights (2)	LT EXT	0181UM	24/08
20870	U.E. Callaway Intake Lights (2)	LT EXT	0522UM	52/20
22873	Moon Township Municipal Authority Back Channel Outfall Danger Buoy	OFF STA	0108OV	14/21
24005	Bens Run Light	LT EXT		03/20
24580	Ohio Power Coal Dock Light	LT EXT	0480OV	44/21
25820	Cargill Barge Loading Facility Light	LT EXT	0552OV	40/09
26290	Boone County Sand And Gravel Lights (2)	LT EXT	0769OV	40/00
26833	Transmontaigne Dock Lights (2)	LT EXT	0286OV	28/21
26860	Dupont Chemical Lights (2)	LT EXT	0330OV	17/18
27590	Transmontaigne Dock Lights (4)	LT EXT		40/21
29997	Cityview at Riverwalk Dock Light	LT EXT	0284OV	28/23
32900	Ergon Dock Lights (2)	LT IMCH		17/13
	Alcosan-Mascaro Temporary Lighted Danger Buoy	MISSING		24/22

DISCREPANCIES (PRIVATE AIDS) CORRECTED

LLNR	Aid Name	Status	Chart No.	BNM Ref.	LNM St	LNM End
------	----------	--------	-----------	----------	--------	---------

None

PLATFORM DISCREPANCIES

Name	Status	Position	BNM Ref.	LNM St	LNM End
------	--------	----------	----------	--------	---------

None

PLATFORM DISCREPANCIES CORRECTED

Name	Status	Position	BNM Ref.	LNM St	LNM End
------	--------	----------	----------	--------	---------

None

SECTION III - TEMPORARY CHANGES and TEMPORARY CHANGES CORRECTED

This section contains temporary changes and corrections to Aids to Navigation for this edition. When charted aids are temporarily relocated for dredging, testing, evaluation, or marking an obstruction, a temporary correction shall be listed in Section IV giving the new position.

TEMPORARY CHANGES

LLNR	Aid Name	Status	Chart No.	BNM Ref.	LNM St	LNM End
3670	Blue Grass Light	TRLT			02/24	
10455	Armstrong Bar Light	RELOCATED			23/18	
11275	Marshall Point Cut-Off Daybeacon	TRDBN			49/16	
29880	Kinnikinnic River Daybeacon	DISCONTINUED			21/20	

TEMPORARY CHANGES CORRECTED

LLNR	Aid Name	Status	Chart No.	BNM Ref.	LNM St	LNM End
------	----------	--------	-----------	----------	--------	---------

None

PLATFORM TEMPORARY CHANGES

Name	Status	Position	BNM Ref.	LNM St	LNM End
------	--------	----------	----------	--------	---------

None

PLATFORM TEMPORARY CHANGES CORRECTED

Name	Status	Position	BNM Ref.	LNM St	LNM End
------	--------	----------	----------	--------	---------

None

SECTION V - ADVANCE NOTICES

This section contains advance notice of approved projects, changes to aids to navigation, or upcoming temporary changes such as dredging, etc. Mariners are advised to use caution while transiting these areas.

SUMMARY OF ADVANCED APPROVED PROJECTS

Approved Project(s)

None

Project Date

Ref. LNM

Advance Notice(s)

LOWER MISSISSIPPI RIVER

The Coast Guard will make the following Aids to Navigation Changes after July 9, 2024:

- Discontinue Port Hudson Light (LLNR-11860) at mile 254.5, Left Descending Bank, in approximate position 30-38-30.980N/091-17-25.012W.
- Discontinue Profit Island Light (LLNR-11870) at mile 252.8, Left Descending Bank, in approximate position 30-36-40.110N/091-17-36.336W.
- Discontinue Devils Swamp Light (LLNR-11900) at mile 242.4, Left Descending Bank, in approximate position 30-31-30.983N/091-15-18.792W.
- Discontinue Allendale Light (LLNR-11915) at mile 239.9, Right Descending Bank, in approximate position 30-30-22.561N/091-17-14.939W.

LNM: 20/24

LOWER MISSISSIPPI RIVER

The Coast Guard will make the following Aids to Navigation Changes after July 9, 2024:

- Discontinue Bayou Sara Bend Light (LLNR-11835) at mile 264.8, Left Descending Bank, in approximate position 30-45-45.695N/091-22-39.079W.
- Discontinue Grave Yard Light (LLNR-11815) at mile 268.4, Right Descending Bank, in approximate position 30-44-21.016N/091-25-43.669W.
- Discontinue Red Store Light (LLNR-11810) at mile 269.5, Right Descending Bank, in approximate position 30-44-02.299N/091-26-40.517W.
- Discontinue Boies Point Light (LLNR-11800) at mile 275.5, Right Descending Bank, in approximate position 30-43-44.641N/091-32-19.223W.
- Discontinue Morganza Crevasse Light (LLNR-11795) at mile 277.2, Right Descending Bank, in approximate position 30-43-54.959N/091-34-23.052W.
- Discontinue New Texas Light (LLNR-11785) at mile 279.7, Right Descending Bank, in approximate position 30-45-31.316N/091-36-01.681W.

LNM: 20/24

LOWER MISSISSIPPI RIVER

The Coast Guard will make the following Aids to Navigation Changes after July 9, 2024:

- Discontinue Sebastapol Light (LLNR-11770) at mile 283.3, Left Descending Bank, in approximate position 30-46-53.170N/091-32-35.455W.
- Discontinue Greenwood Light (LLNR-11760) at mile 288.6, Left Descending Bank, in approximate position 30-51-19.494N/091-30-46.487W.
- Discontinue Ratcliff Light (LLNR-11755) at mile 289.8, Left Descending Bank, in approximate position 30-52-41.326N/091-30-47.718W.
- Discontinue Tunica Bluff Light (LLNR-11753) at mile 292.9, Left Descending Bank, in approximate position 30-54-51.239N/091-32-10.360W.

LNM: 20/24

LOWER MISSISSIPPI RIVER

The Coast Guard will make the following Aids to Navigation Changes after July 9, 2024:

- Discontinue Smithland Lower Light (LLNR-11740) at mile 300.2, Right Descending Bank, in approximate position 30-56-25.004N/091-39-35.831W.
- Discontinue Lum Light (LLNR-11715) at mile 305.6, Right Descending Bank, in approximate position 31-00-25.625N/091-38-15.320W.
- Discontinue Langside Light (LLNR-11710) at mile 308.5, Left Descending Bank, in approximate position 31-00-52.463N/091-35-12.559W.
- Discontinue Wilkinson Light (LLNR-11705) at mile 310.0, Left Descending Bank, in approximate position 31-01-42.362N/091-33-58.882W.
- Discontinue Fort Adams Light (LLNR-11700) at mile 311.4, Left Descending Bank, in approximate position 31-03-03.838N/091-33-18.284W.
- Discontinue Black Hawk Light (LLNR-11685) at mile 318.3, Right Descending Bank, in approximate position 31-07-35.076N/091-37-48.158W.

LNM: 20/24

LOWER MISSISSIPPI RIVER

The Coast Guard will make the following Aids to Navigation Changes after July 9, 2024:

- Discontinue Bob Boles Light (LLNR-11680) at mile 321.8, Left Descending Bank, in approximate position 31-09-55.915N/091-35-25.642W.
- Discontinue Graham Bend Middle Light (LLNR-11660) at mile 330.0, Right Descending Bank, in approximate position 31-15-47.261N/091-39-14.479W.
- Discontinue Joe Pierce Light (LLNR-11650) at mile 333.0, Left Descending Bank, in approximate position 31-15-30.431N/091-36-12.244W.
- Discontinue Black Hills Light (LLNR-11645) at mile 337.7, Left Descending Bank, in approximate position 31-15-54.720N/091-31-23.880W.

Discontinue Fairview Light (LLNR-11640) at mile 339.1, Right Descending Bank, in approximate position 31-17-23.914N/091-31-10.754W.

LNM: 20/24

ARKANSAS RIVER

The Coast Guard will make the following Aids to Navigation Changes after July 9, 2024:

Discontinue Ste. Marie Bend Lower Daybeacon (LLNR-2370) at mile 70.2, Left Descending Bank, in approximate position 34-17-52.752N/091-56-04.167W.

Discontinue Richland Bend Middle Daybeacon (LLNR-2435) at mile 55.8, Right Descending Bank, in approximate position 34-10-15.333N/091-46-16.659W.

Discontinue Richland Bend Lower Daybeacon (LLNR-2440) at mile 55.4, Right Descending Bank, in approximate position 34-10-03.036N/091-45-47.837W.

Discontinue Cooper Point Light (LLNR-2465) at mile 48.9, Left Descending Bank, in approximate position 34-09-12.181N/091-39-42.903W.

Discontinue Kimbrough Light (LLNR-2475) at mile 46.7, Right Descending Bank, in approximate position 34-07-59.300N/091-37-57.460W.

Discontinue Little Bayou Meto Lower Daybeacon (LLNR-2480) at mile 45.4, Left Descending Bank, in approximate position 34-07-46.458N/091-36-41.891W.

Discontinue Cummins Bend Daybeacon (LLNR-2498) at mile 41.4, Right Descending Bank, in approximate position 34-05-08.210N/091-35-22.700W.

Discontinue Sample Island Lower Light (LLNR-2540) at mile 32.7, Left Descending Bank, in approximate position 34-05-14.279N/091-28-01.798W.

Discontinue Ross Ferry Light (LLNR-2570) at mile 24.3, Left Descending Bank, in approximate position 33-59-51.457N/091-24-05.719W.

Discontinue Dandy Dans Daybeacon (LLNR-2582) at mile 22.5, Right Descending Bank, in approximate position 33-58-42.712N/091-23-00.140W.

LNM: 20/24

UPPER MISSISSIPPI RIVER

The Coast Guard will discontinue the following Aids to Navigation after July 23, 2024:

Floyd Bend Daybeacon (LLNR-17745), Mile 726.6, LDB, position 42-25-21.365N/096-23-49.573W.

Dakota City Daybeacon (LLNR-17755), Mile 725.9, RDB, position 42-24-58.151N/096-24-33.812W.

Upper Dakota Bend Daybeacon (LLNR-17760), Mile 723.6, RDB, position 42-23-05.599N/096-24-44.572W.

Woodbury County Daybeacon (LLNR-17765), Mile 723.1, LDB, position 42-22-40.329N/096-24-27.257W.

Lower Dakota Bend Daybeacon (LLNR-17770), Mile 722.3, LDB, position 42-22-01.996N/096-24-41.437W.

Omadi Bend Daybeacon (LLNR-17775), Mile 721.9, RDB, position 42-21-34.976N/096-25-07.650W.

Browsers Bend Upper Daybeacon (LLNR-17780), Mile 719.0, RDB, position 42-19-42.658N/096-23-36.635W.

Bend Daybeacon (LLNR-17785), Mile 718.5, LDB, position 42-19-29.096N/096-22-51.859W.

Snyder Bend Upper Daybeacon (LLNR-17790), Mile 716.8, LDB, position 42-18-12.135N/096-22-02.029W.

Snyder Bend Daybeacon (LLNR-17795), Mile 715.9, RDB, position 42-17-25.016N/096-22-09.687W.

Glovers Point Bend Upper Daybeacon (LLNR-17800), Mile 714.4, RDB, position 42-16-21.538N/096-21-06.277W.

Glovers Point Bend Daybeacon (LLNR-17805), Mile 713.6, LDB, position 42-16-06.505N/096-20-19.867W.

Winnebago Bend Upper Daybeacon (LLNR-17810), Mile 710.8, LDB, position 42-13-54.320N/096-20-23.450W.

Winnebago Bend Daybeacon (LLNR-17815), Mile 709.9, RDB, position 42-13-37.656N/096-21-16.720W.

Reservation Point Daybeacon (LLNR-17820), Mile 708.3, RDB, position 42-12-15.711N/096-21-25.218W.

Hutchinson Daybeacon (LLNR-17825), Mile 707.4, LDB, position 42-11-49.792N/096-20-51.132W.

Don Byers Daybeacon (LLNR-17830), Mile 706.9, LDB, position 42-10-58.061N/096-20-48.923W.

Bogle Daybeacon (LLNR-17835), Mile 706.1, RDB, position 42-10-30.745N/096-21-05.547W.

Omaha Mission Bend Upper Daybeacon (LLNR-17840), Mile 704.2, RDB, position 42-09-14.334N/096-20-03.647W.

Omaha Mission Bend Lower Daybeacon (LLNR-17845), Mile 703.7, LDB, position 42-09-01.669N/096-19-19.694W.

Omaha Mission Bend Lower Daybeacon (LLNR-17850), Mile 703.0, LDB, position 42-08-31.100N/096-18-54.052W.

Thurston County Daybeacon (LLNR-17855), Mile 702.4, RDB, position 42-08-00.523N/096-18-46.586W.

Blackbird Creek Daybeacon (LLNR-17860), Mile 701.0, RDB, position 42-07-31.134N/096-17-25.927W.

Lower Monona Bend Daybeacon (LLNR-17865), Mile 700.5, LDB, position 42-07-30.136N/096-16-49.183W.

Blackbird Bend Upper Daybeacon (LLNR-17870), Mile 697.7, LDB, position 42-05-14.073N/096-16-18.229W.

Blackbird Bend Daybeacon (LLNR-17875), Mile 697.0, RDB, position 42-04-44.413N/096-16-45.321W.

Tieville Bend Upper Daybeacon (LLNR-17880), Mile 693.8, RDB, position 42-02-17.303N/096-15-42.031W.

Tieville Bend Daybeacon (LLNR-17885), Mile 693.2, LDB, position 42-02-08.088N/096-14-54.279W.

Decatur Daybeacon (LLNR-17890), Mile 691.6, LDB, position 42-00-52.276N/096-14-15.480W.

Decatur Lower Daybeacon (LLNR-17905), Mile 690.9, RDB, position 42-00-13.058N/096-14-37.949W.

Pipe Line Daybeacon (LLNR-17910), Mile 689.1, RDB, position 41-59-38.466N/096-13-10.226W.

Middle Decatur Bend Daybeacon (LLNR-17915), Mile 688.5, LDB, position 41-59-52.138N/096-12-32.043W.

Toman Daybeacon (LLNR-17920) at Mile 687.5, LDB, position 41-59-21.821N/096-11-18.826W.

Lower Decatur Bend Daybeacon (LLNR-17925), Mile 686.9, RDB, position 41-58-52.700N/096-10-56.600W.

Upper Louisville Bend Daybeacon (LLNR-17935), Mile 685.5, LDB, position 41-58-48.756N/096-09-23.437W.

Lower Louisville Bend Daybeacon (LLNR-17940), Mile 683.7, LDB, position 41-57-29.515N/096-08-17.511W.

Louisville Cut-Off Daybeacon (LLNR-17945), Mile 682.7, RDB, position 41-56-57.010N/096-08-44.026W.

Carlson Daybeacon (LLNR-17950), Mile 681.8, RDB, position 41-56-02.436N/096-08-34.590W.

LNM: 22/24

SECTION VI - PROPOSED CHANGES

Periodically, the Coast Guard evaluates its system of aids to navigation to determine whether the conditions for which the aids to navigation were established have changed. When changes occur, the feasibility of improving, relocating, replacing, or discontinuing aids are considered. This section contains notice(s) of non-approved, proposed projects open for comment. SPECIAL NOTE: Mariners are requested to respond in writing to the District office unless otherwise noted (see banner page for address).

PROPOSED WATERWAY PROJECTS OPEN FOR PUBLIC COMMENT

Proposed Project(s)

None

Closing

Docket No.

Ref. LNM

Proposed Change Notice(s)

None

SECTION VII - GENERAL

This section contains information of general concern to the Mariners. Mariners are advised to use caution while transiting these areas.

**ALLEGHENY RIVER
MILE 14.0 - AIDS TO NAVIGATION**

Two buoys have been reported submerged near L/D Nr. 3, in the vicinity of Mile 14.0. Mariners are urged to transit the area with caution.

LNM: 22-24

MILE 3.3 - AID TO NAVIGATION

A can buoy has been reported off station in the vicinity of Mile 3.3. Mariners are urged to transit the area with caution.

LNM: 05-24

MILE 0.9 - MILE 0.2 - FIREWORKS DISPLAY/SAFETY ZONE/RIVER CLOSURE

On June 7, 2024, from 8:30 p.m. until midnight, a fireworks display will be held between approximate Miles 0.9 and 0.2. The U.S. Coast Guard COTP Pittsburgh has established a Safety Zone closing the river for this event. Entry into this Safety Zone, during the event period, is prohibited unless otherwise authorized by the U.S. Coast Guard COTP Pittsburgh. Mariners may contact the U.S. Coast Guard via VHF-FM Channel 16, for additional information.

LNM: 22-24

MILE 0.9 - AID TO NAVIGATION

A can buoy has been reported off station, in the channel, in the vicinity of Mile 0.9. Mariners are urged to transit the area with caution.

LNM: 23-24

**ARKANSAS RIVER
MILE 392.5 - BRIDGE CONSTRUCTION/CHANNEL CONDITION**

US 62 Bridge; Commencing at 7:00 a.m. on June 19, 2024, and continuing through 7:00 a.m., June 21, 2024, Pool Nr. 16, in the vicinity of Mile 392.5, will be closed to traffic to allow for the final fit up of the bridge girder span. The Oklahoma Department of Transportation contractor will have a crane placed in the channel and it will not be able to move until fit up is complete. The closure listed above is scheduled to reopen to navigation traffic as stated, but unforeseen problems could require additional time to complete operations. Waterway users are asked to check with L/D 16, for the latest information and should schedule their activities accordingly. Questions or requests for additional information concerning this notice should be directed to Mr. Robert Steiner; Navigation Operations Manager, at (918) 687-4501 or Mr. Rodney Beard; Navigation Project Manager, at (918) 775-4475 Ext 5890.

LNM: 23-24

MILE 118.2 - BRIDGE PROTECTION CELL DAMAGE

The upstream left descending pier protection cell at the Clinton Presidential Park Bridge in the vicinity of Mile 118.2, is damaged and leaning into the left descending bridge pier. Mariners are urged to exercise caution in the area. Mariners may contact the USACE Little Rock District Office, at (501) 324-5096 or via e-mail at: ceswl-op-om@usace.army.mil, for additional information.

LNM: 48-21

**CUMBERLAND RIVER
MILE 191.1 - SHORESIDE MUSIC FESTIVAL**

Commencing June 6, 2024, and continuing through June 9, 2024, the CMA Music Festival will be held in the vicinity of Mile 191.1. The festival will be held from 9:00 a.m. until 7:00 p.m., daily. Mariners are advised to transit the area with caution and maintain a proper lookout. Mariners may contact the event manager at (615) 445-5077, for additional information.

LNM: 23-24

MILE 190.4 - BRIDGE MAINTENANCE

Louisville and Nashville (CSX) Railroad Drawbridge; Vertical clearance is reduced by 4 feet due to installed containment system. The bridge remains fully operational. Mariners are advised to contact the bridge tender via VHF-FM Channel 16 or the maintenance supervisor, at (989) 717-3192, for additional information.

LNM: 35-22

MILE 2.8 - BRIDGE CLEARANCE REDUCTION

Lucy Jefferson Lewis Memorial Bridge; The horizontal clearance through the bridge site has been reduced to 470 feet, due to both demolished bridge piers being in the water. The demolished bridge piers are both marked with buoys. Mariners are urged to exercise extreme caution while transiting the bridge site.

LNM: 02-24

**GREEN RIVER
MILE 94.8 - BRIDGE CLOSURE**

**GREEN RIVER
MILE 94.8 - BRIDGE CLOSURE**

Paducah and Louisville Drawbridge; Due to vandalism of the wiring on the bridge, mariners are required to provide 3-hours advance notice, when requesting drawspan openings.

LNM: 50-23

MILE 63.1 - CHANNEL CONDITION/L/D CLOSURE

L/D Nr. 2, in the vicinity of Mile 63.1, has ceased locking operations, due to high water with an Upper Gauge reading above 22.5 feet. Mariners should contact the lock operator to determine if it is safe to navigate over the weir. Mariners are advised to exercise caution in the area.

LNM: 22-24

**ILLINOIS WATERWAY
MILE 288.7 - MILE 287.3 - BRIDGE REPAIRS**

Joliet Harbor Bridges; Due to ongoing bridge work, mariners are required to provide 1-hour advance notice, when requesting drawspan openings.

LNM: 19-20

MILE 287.3 - BRIDGE MAINTENANCE

McDonough Street Bridge; Due to cleaning and painting of the drawbridge, mariners are requested to provide a one-hour advance notice to the bridge operator for a bridge opening.

LNM: 26-23

MILE 230.8 - MILE 230.4 - DREDGE OPERATION

Continuing until further notice, M/V LASALLE is conducting dredging/strike removal operations between approximate Miles 230.8 and 230.4, LDB, Starved Rock Lower. Work will be conducted from 6:30 a.m. until 5:00 p.m., Monday through Thursday. M/V LASALLE will monitor VHF-FM Channel 14 or 82, and requests 30-minutes advance notice of passage. Mariners are urged to transit the area at their slowest safe speed to minimize their wake and proceed with caution after passing arrangements have been made.

LNM: 18-24

MILE 189.1 - BRIDGE MAINTENANCE

Continuing until further notice, bridge maintenance will be conducted on the Lacon Highway Bridge. Vertical clearance may be reduced by 30 feet, due to containment/work platform below the bridge deck. Mariners are urged to exercise caution while transiting under the bridge. Mariners may contact the Lacon Highway Bridge crew via VHF-FM Channel 13 or 16.

LNM: 31-23

MILE 90.5 - WIRE CROSSING OPERATION

Continuing through June 28, 2024, American Electric Company is conducting overhead wire crossing operations from Alloy, WV, to the LDB, in the vicinity of Mile 90.5. Mariners are urged to exercise caution and maintain a proper lookout when transiting the area.

LNM: 23-24

MILE 55.5 - BOOM PLACEMENT

Continuing until December 5, 2024, Union Carbide Corporation South Charleston Facility will deploy a 75-foot by 50-foot sorbent boom alongside Blaine Island's south bank, in the vicinity of Mile 55.5. The boom will be in place 24-hours a day, 7-days a week and lighted accordingly. Mariners are urged to exercise caution in the area.

LNM: 17-24

**LOWER MISSISSIPPI RIVER
MILE 734.7 - BRIDGE MAINTENANCE**

Memphis Highway Bridge; Due to maintenance on the bridge, a containment system is installed and will hang 2 feet below low steel following the contour of the bridge. Mariners are advised to transit the area with caution.

LNM: 17-23

**UPPER MISSISSIPPI RIVER
MILE 820.9 - DREDGE OPERATION**

Continuing until further notice, the M/V MARGARET D., is conducting dredging operations in the vicinity of Mile 820.9. Work will be conducted from 7:00 a.m. until 7:00 p.m., Monday through Friday. The M/V MARGARET D., will monitor VHF-FM Channel 12 and requests 30-minutes advance notice of passage. Mariners are urged to transit the area at their slowest safe speed to minimize their wake and proceed with caution after passing arrangements have been made.

LNM: 23-24

MILE 820.5 - CHANNEL CONDITION

Shoaling has been reported mid-channel in the vicinity of Mile 820.5. Mariners are urged to exercise caution in the area.

LNM: 23-24

MILE 760.2 - BRIDGE INSPECTION

Wabasha Bridge; Continuing through June 6, 2024, vertical clearance may be reduced due to snooper trucks conducting an inspection of the bridge. The inspection will be conducted daily, during daylight hours. Mariners are urged to exercise caution in the area.

LNM: 23-24

MILE 756.3 - DREDGE OPERATION

Continuing until further notice, the M/V ANGELA K., is conducting dredging operations in the vicinity of Mile 756.3. Work will be conducted from 7:00 a.m. until 7:00 p.m., Monday through Friday. The M/V ANGELA K., will monitor VHF-FM Channel 12 or 13 and requests 30-minutes advance notice of passage. Mariners are urged to transit the area at their slowest safe speed and proceed with caution after passing arrangements have been

MILE 756.3 - DREDGE OPERATION

made.

LNM: 23-24

MILE 679.2 - L/D CLOSURES

L/D Nr. 8, in the vicinity of Mile 679.2, will be closed on June 11, 2024, from 8:00 a.m. until 8:00 p.m., for repairs. Mariners may contact the L/D via VHF-FM Channel 14, or at (651) 290-5036, for additional information.

LNM: 23-24

MILE 663.4 - BRIDGE CONSTRUCTION

Lansing Bridge; Continuing until further notice, the channel will be reduced by 75 feet due to bridge construction. Work will be conducted from 6:00 a.m. to 5:30 p.m., daily. Work barges and equipment will be positioned on the RDB, to work on the pier of the new bridge. M/V JAMES FERRIS will be on scene and monitoring VHF-FM Channel 11. Mariners may also contact Larry Richardson at (815) 281-2084, or Aaron Rosenberry at (612) 282-0321, for further information.

LNM: 13-24

MILE 482.9 - BRIDGE CLOSURE

Rock Island Railroad and Highway Drawbridge; The bridge will be in the closed-to-navigation position from 8:30 a.m. until 11:00 a.m., June 8, 2024, in support of the Quad Cities Heart Walk.

LNM: 20-24

MILE 478.3 - BRIDGE CLEANING

I-280 Bridge; Continuing through June 7, 2024, bridge cleaning will be conducted from 6:00 p.m. to 6:00 a.m., daily. Vertical clearance may be reduced, due to snooper trucks hanging below the bridge deck. Mariners are urged to exercise caution while transiting under the bridge.

LNM: 23-24

MILE 273.4 - L/D CONDITION

Due to critical construction on the dam, L/D Nr. 24, in vicinity of Mile 273.4, is experiencing stronger than normal outdraft conditions on the lower end of the lock. Construction will continue until further notice. Mariners should be alert for and abide by any special instructions issued by the lockmaster.

LNM: 18-24

MILE 109.9 - BRIDGE CONSTRUCTION

Chester Bridge; The right descending navigation span is blocked to river traffic for the next two years due to on-going construction of the new Chester Bridge, also the green navigation lights have been extinguished in that channel. Due to work at the center pier, mariners are advised to stay 100 feet off the center pier. Work is also ongoing upstream of the left descending navigation pier and at the edge of the channel. Mariners are advised to contact the M/V ANDREA or RUBY BELLE via VHF-FM Channel 13 or 16 prior to transiting the bridge.

LNM: 06-24

MILE 42.8 - CHANNEL CONDITION

Shoaling has been reported in the vicinity of Mile 42.8. Mariners are urged to transit the area with caution.

LNM: 22-24

MILE 19.1 - AIDS TO NAVIGATION

Three nun buoys have been reported off station in the vicinity of Mile 19.1. Mariners are urged to exercise caution in the area.

LNM: 23-24

MILE 1.3 - BRIDGE MAINTENANCE

Cairo Bridge; Due to cleaning and painting on the bridge, a containment system is installed and will hang 4.5 feet below low steel and follows the contour of the bridge. Vertical clearance is reduced to 109.7 feet at 0.0 feet on the Cairo Gauge. Mariners are advised to transit the bridge with extreme caution.

LNM: 51-23

MONONGAHELA RIVER**MILE 104.3 - BRIDGE PUBLIC NOTICE**

Morgantown Industrial Park Access Road Bridge; A public notice has been issued for the construction of the Morgantown Industrial Park Access Road Bridge and can be viewed at; https://www.navcen.uscg.gov/sites/default/files/pdf/bridges/publicnotices/D08_PN918-24_MorgantownIndustrialParkAccessRoadBridge_MonongahelaRiver_WV.pdf

LNM: 21-24

MILE 33.5 - MILE 21.3 - SAFETY ADVISORY

The U.S. Coast Guard COTP Pittsburgh advises mariners of multiple unmarked fishing reefs on both banks, extending 50 feet perpendicular to the shorelines, between approximate Miles 33.5 and 21.3. Mariners are urged to transit the area with caution.

LNM: 07-24

MILE 32.37 - AID TO NAVIGATION

A nun buoy has been reported submerged in the vicinity of the New Monongahela Highway Bridge, at Mile 32.37. Mariners are urged to exercise caution in the area.

LNM: 20-24

MILE 24.0 - L/D DEMOLITION

Commencing July 8, 2024, USACE contractors will begin the controlled demolition and removal of the dam at Monongahela River L/D Nr. 3. The

MILE 24.0 - L/D DEMOLITION

controlled demolition will involve the use of explosives, which will restrict navigation activities in the vicinity of L/D Nr. 3. Preparatory work will begin in advance of this date, but the actual demolition will not begin until the week of July 8, 2024.

Preparatory work will include but not be limited to:

- a. Installing aids to navigation to notify river users of the restricted areas around the dam and that the use of the lock is required.
- b. The Braddock pool elevation will be raised to elevation 724.7 feet to facilitate the dam demolition and removal.
- c. Drilling in the dam to prepare for the actual explosive charges.

Following the initial demolition and breaching of the dam at Monongahela River L/D Nr. 3, L/D Nr. 3 will be closed to navigation for an estimated 3 to 12 days, depending on river conditions.

Following the 3-12 day L/D Nr. 3 closure:

- a. To reduce the risk of injury, death, and/or significant property damage, all river traffic will be required to use the lock until the dam is completely removed and the Corps of Engineers removes the restricted areas from the river. That is expected to occur in December 2024.
- b. It is expected that there will be weekly, short-term (less than 3-hours) navigation closures of L/D Nr. 3 while additional sections of the dam undergo controlled demolition.

LNM: 20-24

MILE 1.0 - BRIDGE OBSTRUCTION

Smithfield Bridge; A containment system is installed that hangs 1-foot below low steel and follows the contour of the bridge. Mariners are encouraged to transit the bridge with caution.

LNM: 18-24

OHIO RIVER

MILE 86.4 - AID TO NAVIGATION

A nun buoy has been reported off station in the vicinity of Mile 86.4. Mariners are urged to transit the area with caution.

LNM: 06-24

MILE 281.0 - MILE 282.5 - STONE BANK STABILIZATION

Continuing until approximately June 15, 2024, Amherst Madison, a contractor for Nucor Steel is conducting stone bank stabilization and maintenance dredging, along the LDB, between approximate Miles 281.0 and 282.5. The contractor's floating plant will consist of the M/V BUS BROWN, 1 barge-mounted crane, one spud barge and two jumbo deck barges. Work will be conducted from 6:30 a.m. until 4:30 p.m., Monday through Friday. During non-working hours, the contractor's floating plant will be moored at the worksite and lighted accordingly. The contractor's floating plant will monitor VHF-FM Channels 13 and 16. Mariners are urged to transit the area at their slowest safe speed to minimize their wake and proceed with caution.

LNM: 09-24

MILE 473.7 - AID TO NAVIGATION

A buoy has been reported destroyed in the vicinity of Mile 473.7, RDB, around the bend at Ludlow, KY., previously marking a sunk barge. The remaining 4 buoys previously marking the partially submerged barge, have been reported off station and adrift. Mariners are urged to exercise caution in the area.

LNM: 22-24

MILE 531.5 - DREDGE OPERATION

Commencing June 9, 2024, and continuing until June 19, 2024, Amherst Madison, a contractor for the USACE will conduct dredging operations in the vicinity of Mile 531.5, Markland L/D upper approach. The contractor's floating plant will consist of the M/V RELIANT, M/V LUCEDALE, a crane barge and two jumbo deck barges. Work will be conducted from 7:00 a.m. until 5:00 p.m., 7-days a week. The Main chamber will be utilized to lock all traffic. The placement area will be along the LDB immediately downstream of the locks, so the dredge will be adjacent to the navigation channel in that location during offloading. M/V RELIANT and M/V LUCEDALE will monitor VHF-FM Channel 13. Mariners are urged to transit the area at their slowest safe speed and proceed with caution after passing arrangements have been made.

LNM: 20-24

MILE 604.1 - AIDS TO NAVIGATION

Two nun buoys have been reported missing in the vicinity of Mile 604.1. Mariners are urged to transit this area with caution.

LNM: 13-24

MILE 606.0 - PARTIALLY SUBMERGED BARGE

A partially submerged barge has been reported in the vicinity of Mile 606.0, on March 12, 2024. The partially submerged barge is reportedly not marked. Mariners are urged to transit the area with caution, keep a proper look out and report any sightings to the U.S. Coast Guard Command Center via VHF-FM Channel 16, or by phone, at (502) 779-5425.

LNM: 12-24

MILE 606.8 - L/D CLOSURE

Continuing through June 7, 2024, the McAlpine L/D North (River) chamber will be closed to traffic, due to maintenance operations. All traffic shall pass through the South (Land) chamber. Mariners may contact the lockmaster at (502) 776-6866, for further information.

LNM: 22-24

MILE 756.3 - BRIDGE INSPECTION

Owensboro Highway Bridge; Continuing through June 7, 2024, vertical clearance may be reduced due to snooper trucks conducting an inspection of the bridge. The inspection will be conducted daily, during daylight hours. A safety boat will be on scene monitoring VHF-FM Channel 13 or 16. Mariners may contact the inspection team, at (859) 652-4594, for additional information. Mariners are requested to transit the area at their

MILE 756.3 - BRIDGE INSPECTION

slowest safe speed to minimize their wake and proceed with caution.

LNM: 23-24

MILE 789.0 - MILE 791.3 - FACILITY CONSTRUCTION

Continuing until approximately September 30, 2025, Meuth Construction Supply Inc., is constructing a facility adjacent to the navigation channel between approximate Miles 789.0 and 791.3, RDB. Sixteen tri-tie dolphins will be constructed to anchor barges along the riverbank. Construction for this facility will be performed from a floating plant. The contractor's floating plant will never extend more than 180 feet from the shoreline, at normal pool. The construction contractor will monitor VHF-FM Channel 7, 13 or 16. Mariners are urged to transit the area with caution.

LNM: 39-22

MILE 794.0 - SUNK MOORING CELL

A mooring cell has been reported sunk near TransMontaigne Terminal, in the vicinity of Mile 794.0, RDB, outside of the navigational channel, on April 30, 2024. The sunk mooring cell is reportedly not marked. Mariners are urged to exercise caution in the area.

LNM: 19-24

MILE 973.5 - SUNK ANCHOR BARGE

An anchor barge has been reported sunk in the vicinity of Mile 973.5, LDB, on May 13, 2024. The anchor barge is reportedly marked with a danger buoy. Mariners are urged to proceed with caution, keep a sharp lookout and report any sightings to the nearest U.S. Coast Guard Unit, when transiting this area.

LNM: 22-24

MILE 980.0 - GEOTECHNICAL SAMPLING OPERATION

Continuing through September 30, 2024, the EBI Lift Boat DONALD OLSEN will be conducting geotechnical sampling operations in the vicinity of Mile 980.0, upstream of the Cairo Highway Bridge. Work will be conducted 24-hours a day, 7-days a week. The equipment will not impede traffic and will leave an approximately 800-foot wide navigable channel along the sailing line. EBI Lift Boat DONALD OLSEN will be jacked up out of the water, such that it will be unable to move from its location. EBI Lift Boat DONALD OLSEN will monitor VHF-FM Channels 13 and 16. Mariners are urged to transit the area at their slowest safe speed to minimize their wake and proceed with caution.

LNM: 19-24

TENNESSEE RIVER

MILE 595.0 - AID TO NAVIGATION

A can buoy has been reported off station in the vicinity of Mile 595.0. Mariners are urged to transit the area with caution.

LNM: 20-24

MILE 484.0 - AID TO NAVIGATION

A nun buoy has been reported off station in the vicinity of Mile 484.0. Mariners are urged to transit the area with caution.

LNM: 23-24

MILE 309.6 - BRIDGE MAINTENANCE

I-65 Highway Bridge; Due to maintenance work, vertical clearance may be reduced by 2 feet. Mariners are urged to exercise caution while transiting the bridge.

LNM: 11-24

MILE 21.1 - BRIDGE MAINTENANCE

I-24 Bridges; Due to cleaning and painting, there will be a containment tarp installed that will hang approximately 4 feet below low steel. Vertical clearance will be reduced to 83 feet above normal pool. Mariners are advised to transit the bridge with caution.

LNM: 04-24

SECTION VIII - LIGHT LIST CORRECTIONS

An Asterisk *, indicates the column in which a correction has been made to new information

(1) No.	(2) Name and Location	(3) Mile	(4) Bank	(5) Characteristic	(6) Structure / Dayboard Up Down	(7) Remarks
25055	ASHLAND OIL & REFINING LIGHTS (2)					Remove from list. 23/24 *

ENCLOSURES

OHIO RIVER - L/D CLOSURES

USACE Louisville District Notice to Navigation 2024-001, 2024 scheduled lock outages.

LNM: 15-24

TENNESSEE RIVER/CUMBERLAND RIVER - JUNE MARINE EVENTS/PLANNED RIVER CLOSURES

U.S. Coast Guard Marine Safety Detachment Nashville notice of marine events and planned river closures for June.

LNМ: 23-24

MILE 279.2 - CHANNEL CONDITION

USACE Huntington District Notice to Navigation Interests 24-12, Robert C. Byrd L/D lower approach survey.

LNМ: 18-24

Commander, Eighth Coast Guard District
Hale Boggs Federal Building, Room 1230
500 Poydras Street, New Orleans, LA 70130-3310
Telephone (504) 671-2327
(Business Hours 7:00 a.m. - 3:30 p.m. Monday - Friday)
(Nights, Weekends, Holidays) (855) 485-3727
RDML Barata



US Army Corps
of Engineers
Louisville District

Notice to Navigation Interests

Notice No. 2024-001

Date: January 16, 2024

<http://www.lrl.usace.army.mil/Missions/CivilWorks/Navigation/Notices.aspx>

In Reply Refer to: CELRL-OPT PO Box 59, Louisville, KY 40201 Telephone: 502-315-6694

LOUISVILLE DISTRICT

CALENDAR YEAR 2024

SCHEDULED LOCK OUTAGES

OHIO RIVER

Markland Locks and Dam (Ohio River Mile 531.5): The Primary (1,200 ft) Chamber will be closed **intermittently from 22 April through 7 June 2024** for the Heavy Capacity Fleet (HCF) to replace emergency gate wire rope. All traffic will use the Auxiliary (600 ft) Chamber during the closures.

Cannelton Locks and Dam (Ohio River Mile 720.7): The Auxiliary (600 ft) chamber will be closed **intermittently from 22 April through 7 June 2024** for the Heavy Capacity Fleet (HCF) to replace emergency gate wire rope. All traffic will use the Primary (1,200 ft) Chamber during the closures.

Smithland Locks and Dam (Ohio River Mile 918.5): The Land (1,200 ft) Chamber will be closed from **19 August through 8 November 2024** for repairs to the miter gates. All traffic will use the River (1,200 ft) Chamber during this time.

/s/

Shawn Kenney
Chief, Technical Support Branch



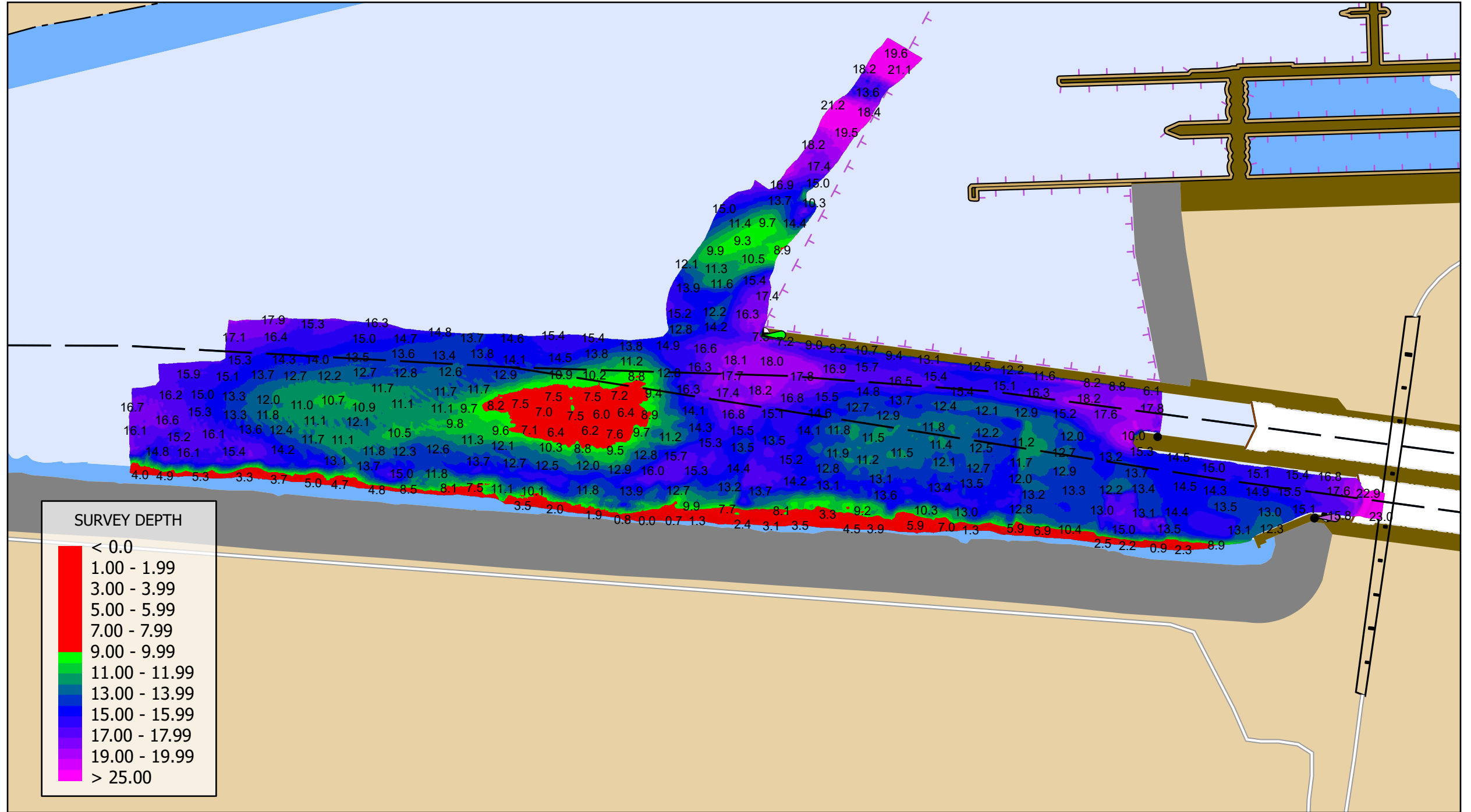
June 2024 Marine Event Notification & Planned River Closures

<u>Date</u>	<u>Event</u>	<u>Time</u>	<u>River/ Mile Marker</u>	<u>Waterway Closure (Yes/No)</u>
01 June	Dogwood Masters Regatta	0600-1800	Clinch/49.5-52	Y
02 June	Music City Triathlon	0530-0930	Cumberland/189.7-192.3	Y
03-28 June	CSC Sail Camp	0900-1700	Clinch/49.5-52	N
06-09 June	CMA Music Festival	0900-1900	Cumberland/191	N
23 June	Chattanooga Waterfront Triathlon	0530-0930	Tennessee/462.7-466	Y
28-30 June	Guntersville Hydrofest	0700-1900	Tennessee/356	Y
29 June	Lenoir City Rockin' the Docks	2200-2230	Tennessee/601	N

For any questions or concerns regarding marine events or scheduled river closures please call Marine Safety Detachment Nashville at (615) 736-5421 or email the staff at msdnashville@uscg.mil.

ROBERT C. BYRD LOCKS AND DAM - LOWER APPROACH

SURVEY PERFORMED 4/29/2024



U.S. ARMY CORPS OF ENGINEERS

HUNTINGTON DISTRICT

