



U.S. Department of Homeland Security
United States Coast Guard

LOCAL NOTICE TO MARINERS

District: 14

Week: 41/24

October 09, 2024
ISSUED BY:
Commander (dpw)
Fourteenth Coast Guard District
300 Ala Moana Boulevard, Room 9-220
Honolulu, HI 96850-4982
Telephone: (808) 535-3409
Email: D14-DG-PJ-dpw@uscg.mil
Website: https://www.navcen.uscg.gov/

Note:

Unless otherwise indicated, missing and destroyed structures are presumed to be in the immediate vicinity, possibly beneath the surface. Any life threatening or hazardous conditions including off station, missing, or inoperative aids to navigation should be reported immediately to U.S. Coast Guard Sector Honolulu at (808) 842-2600 and U.S. Coast Guard Sector Forces Micronesia/Sector Guam at (671) 355-4822. Mariners should proceed with caution.

References:

Light List, Volume VI, Pacific Coast and Pacific Islands, 2024 Edition (COMDTPUB P16502.6).
U.S. Coast Pilot 10, Pacific Coast : Oregon, Washington, Hawaii, Pacific Islands 2023 (4th Edition), Coast Pilots, along with corrections, are ready for free download and weekly updates at www.nauticalcharts.noaa.gov/publications/coast-pilot/index.html.

Only Print-on-Demand (POD) bound copies are available for purchase; visit nauticalcharts.noaa.gov/publications/print-agents.html#coast-pilot.

Navigation information having been of immediate concern to the mariner, and promulgated by the following broadcasts, have been incorporated in this notice when still significant:

COMCOGARD SECTOR HONOLULU HI BNMs: 0126-24
COMCOGARD SECTOR FORCES MICRONESIA/SECTOR GUAM BNMs: 0331-24 to 0336-24

ABBREVIATIONS

A through H

ADRIFT - Buoy Adrift
AICW - Atlantic Intracoastal Waterway
Al - Alternating
B - Buoy
BKW - Breakwater
bl - Blast
BNM - Broadcast Notice to Mariner
bu - Blue
C - Canadian
CHAN - Channel
CGD - Coast Guard District
C/O - Cut Off
CONT - Contour
CRK - Creek
CONST - Construction
DAYMK/Daymk - Daymark
DBN/Dbn - Daybeacon
DBD/DAYBD - Dayboard
DEFAC - Defaced
DEST - Destroyed
DISCON - Discontinued
DMGD/DAMGD - Damaged
ec - eclipse
EST - Established Aid
ev - every
EVAL - Evaluation
EXT - Extinguished
F - Fixed
fl - flash

I through O

I - Interrupted
ICW - Intracoastal Waterway
IMCH - Improper Characteristic
INL - Inlet
INOP - Not Operating
INT - Intensity
ISL - Islet
Iso - Isophase
kHz - Kilohertz
LAT - Latitude
LB - Lighted Buoy
LBB - Lighted Bell Buoy
LHB - Lighted Horn Buoy
LGB - Lighted Gong Buoy
LONG - Longitude
LNM - Local Notice to Mariners
LT - Light
LT CONT - Light Continuous
LTR - Letter
LWB - Lighted Whistle Buoy
LWP - Left Watching Properly
MHz - Megahertz
MISS/MSNG - Missing
Mo - Morse Code
MRASS - Marine Radio Activated Sound Signal
MSLD - Misleading
N/C - Not Charted
NGA - National Geospatial-Intelligence Agency
NO/NUM - Number

P through Z

PRIV - Private Aid
Q - Quick
R - Red
RACON - Radar Transponder Beacon
Ra ref - Radar reflector
RBN - Radio Beacon
REBUILT - Aid Rebuilt
RECOVERED - Aid Recovered
RED - Red Buoy
REFL - Reflective
RRL - Range Rear Light
RELIGHTED - Aid Relit
RELOC - Relocated
RESET ON STATION - Aid Reset on Station
RFL - Range Front Light
RIV - River
RRASS - Remote Radio Activated Sound Signal
s - seconds
SEC - Section
SHL - Shoaling
si - silent
SIG - Signal
SND - Sound
SPM - Single Point Mooring Buoy
SS - Sound Signal
STA - Station
STRUCT - Structure
St M - Statute Mile
TEMP - Temporary Aid Change

FI - Flashing  
G - Green  
GIWW - Gulf Intracoastal Waterway  
HAZ - Hazard to Navigation  
HBR - Harbor  
HOR - Horizontal Clearance  
HT - Height

NOS - National Ocean Service  
NW - Notice Writer  
OBSCU - Obscured  
OBST - Obstruction  
OBSTR - Obstruction  
Oc - Occulting  
ODAS - Anchored Oceanographic Data Buoy

TMK - Topmark  
TRLB - Temporarily Replaced by Lighted Buoy  
TRLT - Temporarily Replaced by Light  
TRUB - Temporarily Replaced by Unlighted Buoy  
USACE - Army Corps of Engineers  
W - White  
Y - Yellow

**Additional Abbreviations Specific to this LNM Edition:**

MSLD SIG - Misleading Signal

---

---

**SECTION I - SPECIAL NOTICES**

This section contains information of special concern to the Mariner.

---

**\*\*\* CHANGES TO THE USCG LNM AND LIGHT LISTS \*\*\***

The U.S. Coast Guard Navigation Center announces upcoming changes to the Local Notice to Mariners (LNM) and the Light List, as part of our efforts to modernize and improve the accessibility, accuracy, and overall user experience for mariners and other stakeholders.

See enclosure 4.

**\*\*\* CANCELLATION OF NOAA PAPER AND RASTER NAUTICAL CHARTS \*\*\***

The National Oceanic and Atmospheric Administration (NOAA) is undertaking a multi-year program to end production and maintenance of its suite of over 1,000 traditional paper nautical charts and all associated raster chart products and services, including: Print-on-Demand (POD) paper nautical charts, Full-size chart PDF files, BookletChart™ PDF files, NOAA raster navigational charts (NOAA RNC®), the NOAA RNC tile service, and the online RNC viewer.

Six months notice of the intent to cancel a specific chart is provided in a "Last Edition" notice. The final cancellation of a chart is made in a "Canceled" notice. Both types of notices will appear in LNM Section IV, "Chart Correction." A comprehensive list of all canceled NOAA charts is available at: <http://www.charts.noaa.gov/MCD/Dole.shtml>.

Traditional paper nautical chart production is ending to enable the creation and maintenance of larger scale, more up-to-date, higher quality coverage of NOAA's electronic navigational chart (NOAA ENC®) product. This will significantly enhance the amount of charted detail available to mariners. More information about NOAA's program to sunset traditional paper charts is on the NOAA Coast Survey website at: <https://nauticalcharts.noaa.gov/charts/farewell-to-traditional-nautical-charts.html>

An online NOAA Custom Chart application at: <https://devgis.charttools.noaa.gov/pod> is available to create chart images from ENC data, which may then be printed. Notices to Mariners will not be issued for NOAA Custom Charts.

**HI ISLANDS - OAHU - JOINT PACIFIC MULTINATIONAL READINESS CENTER (41/24)**

The JPMRC will be conducting GPS denial on various locations on the island October 05-16, 2024 between the times of 1400-0700. Event will be near Schofield Barracks, HI 190 NM radius at 50ft above ground level.

**SAFETY NOTICE - NAVIGATIONAL RANGE AND SECTOR LIGHTS ON ELECTRONIC CHARTS (39/22)**

The U.S. Coast Guard has become aware that the Range and Sector Light Characteristic labels are not displayed on Electronic Navigational Charts (ENCs) when used in an Electronic Chart Display and Information System (ECDIS) due to limitations of the S-52 ECDIS display specification. Mariners may query the ENC data directly within ECDIS or refer to the Light List for complete information on Range and Sector Light Characteristics.

**NEW MERCHANT MARINER CREDENTIAL PASSPORT BOOKLET (09/24)**

The U.S. Coast Guard announced a new merchant mariner credential (MMC) set to launch on March 1, 2024. This milestone marks the first comprehensive revision of the mariner credential in nearly a decade and is strategically designed to enhance both quality of service and security within the Marine Transportation System (MTS). U.S. Coast Guard Marine Safety Information Bulletin (MSIB) 01-24, New Merchant Mariner Credential Passport Booklet Replacement, has been posted on the DCO's MSIB Site and announced at the National Maritime Center (CG-NMC) Home Page ([uscg.mil](http://uscg.mil)). Please visit these resources for more information on the credential.

**PACIFIC OCEAN - HAZARD TO NAVIGATION - MARINE DEBRIS (07/12)**

With the increase in ocean debris sightings along the coastlines of the Pacific Ocean, mariners are reminded to submit debris sighting reports to the National Oceanic and Atmospheric Administration (NOAA) Marine Debris Program at [DisasterDebris@noaa.gov](mailto:DisasterDebris@noaa.gov), and the University of Hawaii oceanographic research center at [marinedebris@soest.hawaii.edu](mailto:marinedebris@soest.hawaii.edu). For inshore sightings, please use the State of Hawaii <https://dlnr.hawaii.gov/dobor/reportmarinedebrishawaii/>.

**HI ISLANDS - OAHU - WAVE ENERGY TEST SITE (41/24)**

Oscilla Power has contracted with Sea Engineering, Inc. to install the Triton-C Wave Energy Converter (WEC) at the WETS site, off of Marine Corps Base Hawaii. This installation consists of 3 subsurface buoys, and 1 surface buoy. All mariners should keep at least 500 feet away from position 21° 27.942'N 157° 45.039'W. The subsurface buoys are at water depths -2 to -8 ft which can post a collision risk to vessels of all drafts. The subsurface float is marked with an orange hard float and flasher.

**HI ISLANDS - HAWAII - HILO HARBOR - AIS TEMPORARY DEACTIVATION (07/19)**

All mariners be advised the Coast Guard has temporarily deactivated AIS broadcasting for the following aids to navigation in the Hilo, HI area:

28035 Hilo Harbor Entrance Lighted Buoy 1 AIS: MMSI 993699986  
28040 Hilo Harbor Breakwater Light AIS: MMSI 993699987  
28055 Hilo Harbor Lighted Buoy 3 AIS: MMSI 993699985  
28070 Hilo Harbor Lighted Buoy 4 AIS: MMSI 993699984

**HI ISLANDS - HAWAII - ISAAC HALE PARK (02/19)**

The waterway leading to Pohoiki Bay boat ramp at Isaac Hale Park is un-navigable due to shoaling and sand accumulation. All mariners are requested to use caution when transiting the channel leading up to the ramp. POC: DLNR DOBOR, Hawaii District (808) 327-3690  
<https://dlnr.hawaii.gov/dobor/>

**HI ISLANDS - HAWAII - WAILOA BASIN SHOALING (05/24)**

There has been a report of increased shoaling at the entrance to Wailoa River. The shoaling is most severe between Wailoa Basin Channel Lights 1 and 2 (Light List numbers 28120 and 28125) and at low tides. All mariners are advised to use caution when transiting the channel. Reported by: Wailoa River and Reeds Bay Boating and Users Association

**HI ISLANDS - MAUI - MALA WHARF SHOALING (32/22)**

There has been a report of increased shoaling around Mala Wharf. At low tide, the Mala Wharf Boat Ramp also becomes dangerously shallow with waters less than 03 feet. All mariners are requested to use caution while loading and unloading at Mala Wharf Boat Ramp and when transiting the channel. POC: DLNR DOBOR, Maui District (808) 243-5824

**HI ISLANDS - MAUI - MAALAEA HARBOR SHOALING**

Report of shoaling within Maalaea Harbor, Maui. The shoaling berm, which runs parallel to the Southern seawall may pose a significant impact to the charted draft. All vessels transiting in and out of the harbor are advised to do so with caution.

**HI ISLANDS - MAUI - LAHAINA HARBOR SHOALING (34/22)**

There have been numerous reports of shoaling around Lahaina Harbor. All mariners are requested to transit the area with caution and report any observed changes in shoaling conditions to DLNR DOBOR at (808) 243-5824 and Marine Safety Team Maui at MSTMaui@uscg.mil

**HI ISLANDS - OAHU - MAUNALUA BAY SHOALING (05/22)**

There has been a report of increased shoaling in Maunaloa Bay, between Maunaloa Bay Daybeacon 1A (LLNR 28935) and Maunaloa Bay Daybeacon 2 (LLNR 28940) when transiting to and from Hawaii Kai. At mean low tide, the Maunaloa Bay Boat Ramp also becomes dangerously shallow. All mariners are requested to use caution while loading and unloading at Maunaloa Bay Boat Ramp and when transiting the channel. POC: DLNR DOBOR at (808) 587-1966 / (808) 832-3520 or website listing : <https://dlnr.hawaii.gov/dobor/contact/>

**HI ISLANDS - OAHU - PEARL HARBOR DREDGE PROJECT (16/24)**

Dredging operations will commence on or about April 22, 2024 in Pearl Harbor around Light 17. Our Operations Manager Mr. Tas Bangash can be reached at (808) 979-6751.

Mariners are advised to use extreme caution while transiting the dredge area. Request mariners to transit at their slowest safe speed to minimize wake when in the vicinity of a dredge and proceed with caution after passing arrangements have been made.

The following Aid to Navigation will be affected as temporary disestablished:  
Pearl Harbor Light 17 (29445)

**HI ISLANDS - OAHU - HAZARD TO NAVIGATION (29/24)**

Aerial target last known position 22-24N 160-13W on 14 July at 2220Z. This target is orange, 16 feet long, weighing approximately 1000 pounds, and may be floating on the surface. Mariners are requested to use caution when operating in this area.

If this target is found please contact the Pacific Missile Range Facility at (808) 335-4301. Do not attempt to recover this device due to risk of injury or property damage because of its size and weight.

**HI ISLANDS - OAHU - SMALL BOAT AND DIVING OPERATIONS (39/24)**

The National Oceanic Atmospheric Administration (NOAA), Ecosystem Science Division (ESD) and NOAA Restoration Center (RC) along with the Hawaii Division of Aquatic Resources (DAR) will be conducting small boat and diving operations near the Kalaeloa Barbers Point Harbor Entrance Channel, coordinates 21.316079, -158.127584.

Mariners are advised that up to two small boats will be conducting dive operations during daylight hours from 0900 to 1600 on weekdays between September 24, 2024, and October 18, 2024, at the southern end of the Kalaeloa Barbers Point channel entrance. These boats will be supporting a team of 2-3 divers, performing 3-4 dives daily at the coordinates (21.316079, -158.127584).

Mariners are requested to proceed with caution in the vicinity of these operations and to contact the small boats on VHF Ch. 16 or Ch. 12 with any questions.

For further inquiries, please contact Joao Garriques at 808-255-6447 or joao.garriques@noaa.gov.

See enclosure 5

**MARIANA ISLANDS - GUAM - DIVING OPERATIONS AND UNDERWATER CONSTRUCTION (26/24)**

Precon Marine, Inc. (PMI) will be mobilizing a Dive Vessel just in the vicinity of Hagatna/ Agana Bay., GUAM 3700' offshore to conduct Diving Operations to support MCC Corp operations. Marker Buoys will be in place during the duration of the project in the area of coordinates below. The proposed PMI project will consist of:

1. Diving (Commercial)  
(Estimated) 13°29'38.63"N, 144°45'55.36"E

The proposed project will start on June 19th 2024 and will last approximately 3 Weeks. A Vessel will be staged at the coordinates 24/7 during the duration of the project. Commercial Divers will post the Alpha Dive flag during all diving operations. The area will remain open and operational. All Staged equipment shall have approved Navigational warning devices following Coast Guard rules and regulations. If activities need to be extended past July 12th, 2024, an additional Notice shall be submitted.

Mariners are requested to use extreme caution while transiting the work area.

**MARIANA ISLANDS - GUAM - EGS GROUP SUBSEA SURVEY OPERATIONS (41/24)**

The R/V BOLD EXPLORER will be conducting an undersea telecommunications cable survey in Guam coastal/marine waters October 14th 2024 – October 26th 2024. ALL VESSELS AND FISHING ACTIVITY REQUESTED TO MAINTAIN A 1 NAUTICAL MILE (1 NM) CLOSEST POINT OF APPROACH (CPA).

Call Sign: C6GJ2

Flag: Commonwealth of The Bahamas

VHF: Monitoring Channels VHF 16 & 13.

Activity: Undersea Telecommunications Cable Route Survey

Location: USA Guam Territorial Waters

Activity Period: October 14th 2024 – October 26th 2024

24 hr. Contact: Bridge VSAT PHONE: +1-929-481-5774

MMSI: 311001260

ISAT Phone: +870 776 114 988

E-mail: becaptain@egssurvey.com (Captain/Bridge)

## SECTION II - DISCREPANCIES

This section lists all reported and corrected discrepancies related to Aids to Navigation in this edition. A discrepancy is a change in the status of an aid to navigation that differs from what is published or charted.

### DISCREPANCIES (FEDERAL AIDS)

LLNR	Aid Name	Status	Chart No.	BNM Ref.	LNM St	LNM End
28110	Hilo Harbor Lighted Buoy 10	LT EXT			40/24	
28110	Hilo Harbor Lighted Buoy 10	LT EXT			40/24	
28340	Kahului Harbor Entrance Range Front Light	LT IMCH	19340	SCC Hono 146-2:	33/23	
28470	Lahaina Boat Basin Range Front Light	STRUCT DEST		SCC Hono 148-2:	33/23	
28475	Lahaina Boat Basin Range Rear Light	STRUCT DMGD		SCC Hono 147-2:	33/23	
28510	Hawea Point Light	DAYMK MISSING	19340	SCC Hono 090-2:	20/23	
28520	Pohakuloa Point Light	LT EXT	19340	SCC Hono 213-2:	45/21	
<b>28600</b>	<b>Kaunakakai Harbor Lighted Buoy 2</b>	<b>OFF STATION</b>	<b>19340</b>		<b>41/24</b>	
28700	Kaneohe Bay Channel Daybeacon 5	DAYMK IMCH		SCC Hono 140-2:	31/23	
<b>29170</b>	<b>Honolulu Harbor Entrance Light</b>	<b>LT EXT</b>	<b>19340</b>		<b>41/24</b>	
29345	Hickam Harbor Channel Buoy 1	MISSING			24/24	
29654.2	Barbers Point Harbor Entrance Channel Light 6	LT EXT		SCC HONO 104-2:	33/24	
29770	Nawiliwili Harbor Breakwater Light	LT EXT/DAYMK MISSING		SCC Hono 095-2:	38/22	
30185	Breakers Point Light	LT EXT		SCC Hono 011-2:	05/23	
30751	Piti Channel Entrance Light 1	STRUCT DEST/HAZ NAV		SCC Guam 195-2:	22/23	
30752	Piti Channel Entrance Light 2	STRUCT DEST		SCC Guam 212-2:	22/23	
30765	Apra Outer Harbor Lighted Buoy 7	LT EXT		Sector Guam 306:	38/24	
30865	Managaha Island Light	LT IMCH			34/24	

### DISCREPANCIES (FEDERAL AIDS) CORRECTED

LLNR	Aid Name	Status	Chart No.	BNM Ref.	LNM St	LNM End
28035	Hilo Harbor Entrance Lighted Buoy 1	WATCHING PROPERLY	19320		40/24	42/24

### DISCREPANCIES (PRIVATE AIDS)

LLNR	Aid Name	Status	Chart No.	BNM Ref.	LNM St	LNM End
28007.01	FAD Site G - Pepeekeo, Hawaii	MISSING	19320		26/24	
28007.22	FAD Site WH1	MISSING	19320	SCC Hono 021-1:	18/15	
28007.25	FAD Site F - Kailua Kona, Hawaii	OFF STA	19320	SCC Hono 194-2:	48/23	
28007.29	FAD Site XX - Puako, Hawaii	MISSING	19320	SCC Hono 023-2:	06/24	
28007.33	FAD Site DD - Opana Point, Maui	MISSING	19340	SCC Hono 008-2:	02/24	
28007.4	FAD SITE MTBC 1	MISSING			26/24	
28007.42	FAD SITE MTBC 2	MISSING	19004	SCC Hono 030-2:	06/22	
28008.01	FAD Site M - Hana Bay, Maui	MISSING	19320		19/24	
28008.03	FAD Site NL - Nuu Landing, Maui	MISSING	19320		19/24	
28008.05	FAD Site GG - Nakaohu Point, Maui	MISSING	19320		19/24	
28008.11	FAD Site SO - Kahoolawe	MISSING	19340		26/24	
28008.19	FAD Site CC - Kaena Point, Lanai	MISSING	19340	SCC Hono 024-2:	06/24	
28008.33	FAD Site P - Penguin Bank, Oahu	MISSING	19339	SCC Hono 165-2:	39/23	
28008.35	FAD Site HH - Pearl Harbor, Oahu	MISSING	19340	SCC Hono 143-2:	49/22	
28008.37	FAD Site BO - Barbers Point, Oahu	MISSING	19380	SCC Hono 025-2:	06/24	
28009.01	FAD Site R - Makaha, Oahu	MISSING	19004	SCC Hono 026-2:	06/24	
28009.05	FAD Site CO - Kaena Point, Oahu	MISSING	19380		26/24	

28009.09	FAD Site J - Wailalee, Oahu	MISSING	19380	SCC Hono 005-2: 02/24
28009.13	FAD Site BB - Moloaa, Kauai	MISSING	19380	SCC Hono 027-2: 06/24
28009.15	FAD Site DK - Anahola, Kauai	OFF STA	19004	SCC Hono 006-2: 02/24
28009.17	FAD Site WK - Wailua, Kauai	MISSING	19380	SCC Hono 153-2: 37/23
28009.23	FAD Site PP - Koloa, Kauai	MISSING	19380	SCC Hono 180-2: 43/23
28271	Kawaihae LT Draft Harbor Buoy 2	MISSING		SCC Hono 129-2: 29/23
28271.1	Kawaihae LT Draft Harbor Buoy 3	MISSING		SCC Hono 183-2: 44/23
28271.3	Kawaihae LT Draft Harbor Buoy 6	MISSING		SCC Hono 184-2: 44/23
28381.1	Kahului Boat Ramp Buoy 1	MISSING		SCC Hono 187-2( 30/20
28381.2	Kahului Boat Ramp Buoy 2	MISSING		SCC Hono 187-2( 30/20
28381.3	Kahului Boat Ramp Buoy 3	MISSING		SCC Hono 187-2( 30/20
28381.4	Kahului Boat Ramp Buoy 4	MISSING		SCC Hono 187-2( 30/20
28381.5	Kahului Boat Ramp Buoy 5	MISSING		SCC Hono 187-2( 30/20
28381.6	Kahului Boat Ramp Buoy 6	MISSING		SCC Hono 187-2( 30/20
28381.8	Kahului Boat Ramp Buoy 8	MISSING		SCC Hono 187-2( 30/20
28381.9	Kahului Boat Ramp Buoy 9	MISSING		SCC Hono 187-2( 30/20
28395	Hana Bay Daybeacon	DAYMK DMGD/STRUCT DMGD		SCC Hono 061-2: 18/22
28427	Maalaea Basin Channel Lighted Buoy 1	ADRIFT/LT EXT		SCC Hono 158-1: 22/18
28430	Maalaea Basin Channel Lighted Buoy 2	LT EXT		SCC Hono 017-2: 06/23
28480	Lahaina Boat Basin Lighted Buoy 3	MISSING		SCC Hono 177-1: 28/18
28495	Lahaina Boat Basin Lighted Buoy 6	OFF STA		SCC Hono 196-2: 48/23
28500	Lahaina Boat Basin Lighted Buoy 7	MISSING		SCC Hono 238-1: 46/18
28505	Lahaina Boat Basin Lighted Buoy 8	OFF STA		SCC Hono 169-2: 41/23
28507.5	Mala Channel Light 5	LT EXT		SCC Hono 283-2( 45/20
28507.6	Mala Channel Light 6	LT EXT		SCC Hono 284-2( 45/20
28630	Kaunakakai Small Boat Harbor Buoy 1	SINKING		SCC Hono 223-2: 46/21
28674.04	WETS 4	MISSING		SCC Hono 010-1: 02/18
28674.05	WETS 5	MISSING		SCC Hono 011-1: 02/18
28895	Makai Channel Daybeacon 3	DAYMK MISSING		SCC Hono 038-1: 11/19
28900	Makai Channel Daybeacon 4	MISSING		SCC Hono 038-1: 11/19
29010	Maunaloa Bay Daybeacon 16	HAZ NAV/DAYMK DMGD		SCC Hono 050-2: 07/22
29100	Ala Wai Boat Harbor Channel Range Front Light	Status Unreported		SCC Hono 049-2: 17/24
29105	Ala Wai Boat Harbor Channel Range Rear Light	LT EXT		SCC Hono 162-2: 39/23
29115	Ala Wai Boat Harbor Channel Buoy 4	OFF STA/SINKING		SCC Hono 079-2: 29/22
29125	Ala Wai Boat Harbor Channel Daybeacon 6	DAYMK DMGD		SCC Hono 174-1: 27/18
29135	Ala Wai Boat Harbor Channel Daybeacon 8	DAYMK DMGD		SCC Hono 175-1: 27/18
29315	Keehi Lagoon Barge Turning Channel Range Front	REDUCED INT		SCC Hono 312-2( 52/20
29325	Keehi Lagoon Barge Turning Basin Buoy 2	OFF STA		SCC Hono 085-1: 16/12
29368	PacIOOS Wave Lighted Buoy Pearl Harbor	MISSING		SCC Hono 040-2: 11/24
29600	Barbers Point Anchorage Area Bravo Tank Terminal Lighted Buoy A	LT EXT	19340	SCC Hono 001-2: 01/22
29656	West Beach Marina Light 2	LT EXT		SCC Hono 266-1: 40/17
29734.6	HOT site surface mooring buoy	OFF STA		SCC Hono 29/22
29900	Kikiaola Boat Harbor Range Front Light	DAYMK DMGD		SCC Hono 186-2: 45/23
29901	Kikiaola Boat Harbor Range Rear Light	DAYMK DMGD		SCC Hono 187-2: 45/23
30602	PacIOOS Wave Lighted Buoy Ipan	MISSING		07/24
30603	FAD Site "Cocos" - Guam	LT EXT		SCC Guam 014-1 03/19

30612	FAD Site "FACPI 2" - Guam	MISSING	SCC Guam 082-1 09/19
30624	FAD Site "Number 2" - Guam	OFF STA	SCC Guam 146-1 12/14
30631	FAD Site "Number 3"	MISSING	SCC Guam 083-1 09/19
30634	FAD Site "Number 4"	MISSING	SCC Guam 011-1 03/19
30637.1	FAD Site GF1	MISSING	SCC Guam 041-1 03/18
30640	FAD Site "Number 5"	LT EXT	SCC Guam 607-1 47/18
30787	Drydock Point West Entrance Daybeacon 1	DAYMK MISSING	SCC Guam 707-1 44/17
30811.3	Agat Small Boat Harbor Light 3	LT EXT	SCC Guam 178-1 18/19
30811.9	Agat Small Boat Harbor Daybeacon 9	DAYMK IMCH	SCC Guam 092-1 07/18
30815	Mamaon Channel Lighted Buoy 1	OFF STA	SCC Guam 718-1 45/17
30820	Mamaon Channel Lighted Buoy 2	OFF STA	SCC Guam 506-1 39/18
30851.1	FAD Site EE - Rota	MISSING	SCC Guam 195-2 20/22
30851.2	FAD Site DD - Rota	MISSING	SCC Guam 303-1 30/19
30851.3	FAD Site DE - Rota	MISSING	SCC Guam 084-2 10/23
30852.16	Fad Site FF - Saipan	MISSING	SCC Guam 077-2 11/24
30852.17	FAD Site GG - Saipan	MISSING	SCC Guam 077-2 11/24
30852.18	Fad Site HH - Saipan	MISSING	SCC Guam 077-2 11/24
30852.19	FAD Site II - Saipan	MISSING	SCC Guam 083-2 10/23
30852.22	Fad Site LL - Saipan	MISSING	SCC Guam 196-2 20/22
30913	Smiling Cove Lighted Buoy 1	MISSING	SCC Guam 284-2 29/22

**DISCREPANCIES (PRIVATE AIDS) CORRECTED**

LLNR	Aid Name	Status	Chart No.	BNM Ref.	LNM St	LNM End
28007.43	PacIOOS Wave Lighted Buoy Pauwela	WATCHING PROPERLY	19340		40/24	42/24

**PLATFORM DISCREPANCIES**

Name	Status	Position	BNM Ref.	LNM St	LNM End
------	--------	----------	----------	--------	---------

None

**PLATFORM DISCREPANCIES CORRECTED**

Name	Status	Position	BNM Ref.	LNM St	LNM End
------	--------	----------	----------	--------	---------

None

**SECTION III - TEMPORARY CHANGES and TEMPORARY CHANGES CORRECTED**

This section contains temporary changes and corrections to Aids to Navigation for this edition. When charted aids are temporarily relocated for dredging, testing, evaluation, or marking an obstruction, a temporary correction shall be listed in Section IV giving the new position.

**TEMPORARY CHANGES**

LLNR	Aid Name	Status	Chart No.	BNM Ref.	LNM St	LNM End
28935	Maunaloa Bay Daybeacon 1A	TRUB			47/22	
29230	Honolulu Harbor Buoy 10	DISCONTINUED FOR DREDGING			27/24	
29445	Pearl Harbor Light 17	DISCONTINUED FOR DREDGING		SCC Hono 048-24	16/24	
30740	Cabras Island Channel Junction Lighted Buoy A	TRLB			25/23	
30751	Piti Channel Entrance Light 1	TRLB		SCC Guam 273-23	28/23	
30752	Piti Channel Entrance Light 2	TRLB			31/24	

**TEMPORARY CHANGES CORRECTED**

None

PLATFORM TEMPORARY CHANGES

Name	Status	Position	BNM Ref.	LNM St	LNM End
------	--------	----------	----------	--------	---------

None

PLATFORM TEMPORARY CHANGES CORRECTED

Name	Status	Position	BNM Ref.	LNM St	LNM End
------	--------	----------	----------	--------	---------

None

## SECTION IV - CHART CORRECTIONS

This section contains corrections to federally and privately maintained Aids to Navigation, as well as NOS corrections.

This section contains corrective actions affecting chart(s). Corrections appear numerically by chart number, and pertain to that chart only. It is up to the mariner to decide which chart(s) are to be corrected. The following example explains individual elements of a typical chart correction.

Chart Number	Chart Edition	Edition Date	Last Local Notice to Mariners	Horizontal Datum Reference	Source of Correction	Current Local Notice to Mariners
12327	91st Ed.	19-APR-97	Last LNM: 26/97	NAD 83		27/97
Chart Title: NY-NJ-NEW YORK HARBOR - RARITAN RIVER						
Main Panel 2245 NEW YORK HARBOR						
(Temp)	ADD	NATIONAL DOCK CHANNEL BUOY 3			CGD01	074-02-48.001W
	Corrective Action	Green can	Object of Corrective Action		Position	

(Temp) indicates that the chart correction action is temporary in nature. Courses and bearings are given in degrees clockwise from 000 true. Bearings of light sectors are toward the light from seaward. The nominal range of lights is expressed in nautical miles (NM) unless otherwise noted.

**19004**      **39th Ed.**      **01-NOV-10**      **Last LNM: 04/15**      **WGS 84**      **41/24**

Chart Title: **Hawai'ian Islands**

Main Panel 2763 HAWAIIAN ISLANDS. Page/Side: N/A

LAST EDITION No new editions of chart 19004 will be published. It will be canceled on 04-Dec-24. Comparable or larger scale Electronic Navigational Chart (ENC) coverage is available. See "Cancellation of NOAA Paper and Raster Nautical Charts" in Section I of this LNM for details. A list of all canceled NOAA charts is at <https://www.charts.noaa.gov/MCD/Dole.shtml>.

NOS  
--

**19007**      **18th Ed.**      **01-DEC-06**      **Last LNM: 39/11**      **WGS 84**      **41/24**

Chart Title: **Hawai'i to French Frigate Shoals**

Main Panel 2764 HAWAII TO FRENCH FRIGATE SHOALS. Page/Side: N/A

LAST EDITION No new editions of chart 19007 will be published. It will be canceled on 02-Oct-24. Comparable or larger scale Electronic Navigational Chart (ENC) coverage is available. See "Cancellation of NOAA Paper and Raster Nautical Charts" in Section I of this LNM for details. A list of all canceled NOAA charts is at <https://www.charts.noaa.gov/MCD/Dole.shtml>.

NOS  
--

CANCELED Chart 19007 is canceled. No Print-on Demand or digital raster formats of this chart are available. Comparable or larger scale Electronic Navigational Chart (ENC) coverage is available. See "Cancellation of NOAA Paper and Raster Nautical Charts" in Section I of this LNM for details. A list of all canceled NOAA charts is at <https://www.charts.noaa.gov/MCD/Dole.shtml>.

NOS  
--

**19010**      **20th Ed.**      **01-APR-11**      **Last LNM: 04/15**      **WGS 84**      **41/24**

Chart Title: **Hawai'ian Islands southern part**

Main Panel 2765 HAWAIIAN ISLANDS SOUTHERN PART. Page/Side: N/A

LAST EDITION No new editions of chart 19010 will be published. It will be canceled on 02-Oct-24. Comparable or larger scale Electronic Navigational Chart (ENC) coverage is available. See "Cancellation of NOAA Paper and Raster Nautical Charts" in Section I of this LNM for details. A list of all canceled

NOS  
--



NOAA charts is at <https://www.charts.noaa.gov/MCD/Dole.shtml>.

CANCELED Chart 19010 is canceled. No Print-on Demand or digital raster formats of this chart are available. Comparable or larger scale Electronic Navigational Chart (ENC) coverage is available. See "Cancellation of NOAA Paper and Raster Nautical Charts" in Section I of this LNM for details. A list of all canceled NOAA charts is at <https://www.charts.noaa.gov/MCD/Dole.shtml>. NOS -- --

**19013**      **19th Ed.**      **01-OCT-10**      **Last LNM: 40/12**      **WGS 84**      **41/24**

*ChartTitle: Hawaiian Islands northern part*

**Main Panel 2766 HAWAIIAN ISLANDS NORTHERN PART. Page/Side: N/A**

LAST EDITION No new editions of chart 19013 will be published. It will be canceled on 02-Oct-24. Comparable or larger scale Electronic Navigational Chart (ENC) coverage is available. See "Cancellation of NOAA Paper and Raster Nautical Charts" in Section I of this LNM for details. A list of all canceled NOAA charts is at <https://www.charts.noaa.gov/MCD/Dole.shtml>. NOS -- --

CANCELED Chart 19013 is canceled. No Print-on Demand or digital raster formats of this chart are available. Comparable or larger scale Electronic Navigational Chart (ENC) coverage is available. See "Cancellation of NOAA Paper and Raster Nautical Charts" in Section I of this LNM for details. A list of all canceled NOAA charts is at <https://www.charts.noaa.gov/MCD/Dole.shtml>. NOS -- --

**19320**      **17th Ed.**      **01-FEB-08**      **Last LNM: 04/15**      **WGS 84**      **41/24**

*ChartTitle: Island Of Hawai'i*

**Main Panel 2772 ISLAND OF HAWAII. Page/Side: N/A**

LAST EDITION No new editions of chart 19320 will be published. It will be canceled on 04-Dec-24. Comparable or larger scale Electronic Navigational Chart (ENC) coverage is available. See "Cancellation of NOAA Paper and Raster Nautical Charts" in Section I of this LNM for details. A list of all canceled NOAA charts is at <https://www.charts.noaa.gov/MCD/Dole.shtml>. NOS -- --

**19340**      **27th Ed.**      **01-MAR-08**      **Last LNM: 04/15**      **WGS 84**      **41/24**

*ChartTitle: Hawai'i to O'ahu*

**Main Panel 2786 HAWAII TO OAHU. Page/Side: N/A**

LAST EDITION No new editions of chart 19340 will be published. It will be canceled on 04-Dec-24. Comparable or larger scale Electronic Navigational Chart (ENC) coverage is available. See "Cancellation of NOAA Paper and Raster Nautical Charts" in Section I of this LNM for details. A list of all canceled NOAA charts is at <https://www.charts.noaa.gov/MCD/Dole.shtml>. NOS -- --

**19380**      **15th Ed.**      **01-OCT-03**      **Last LNM: 37/12**      **WGS 84**      **41/24**

*ChartTitle: O'ahu to Ni'ihau*

**Main Panel 2809 OAHU TO NIIHAU. Page/Side: N/A**

LAST EDITION No new editions of chart 19380 will be published. It will be canceled on 04-Dec-24. Comparable or larger scale Electronic Navigational Chart (ENC) coverage is available. See "Cancellation of NOAA Paper and Raster Nautical Charts" in Section I of this LNM for details. A list of all canceled NOAA charts is at <https://www.charts.noaa.gov/MCD/Dole.shtml>. NOS -- --

**81004**      **5th Ed.**      **01-AUG-08**      **Last LNM: 17/12**      **WGS 84**      **41/24**

*ChartTitle: Commonwealth of the Northern Mariana Islands*

**Main Panel 2904 MARIANA ISLANDS. Page/Side: N/A**

LAST EDITION No new editions of chart 81004 will be published. It will be canceled on 02-Oct-24. Comparable or larger scale Electronic Navigational Chart (ENC) coverage is available. See "Cancellation of NOAA Paper and Raster Nautical Charts" in Section I of this LNM for details. A list of all canceled NOAA charts is at <https://www.charts.noaa.gov/MCD/Dole.shtml>. NOS -- --

CANCELED Chart 81004 is canceled. No Print-on Demand or digital raster formats of this chart are available. Comparable or larger scale Electronic Navigational Chart (ENC) coverage is available. See "Cancellation of NOAA Paper and Raster Nautical Charts" in Section I of this LNM for details. A list of all canceled NOAA charts is at <https://www.charts.noaa.gov/MCD/Dole.shtml>. NOS -- --

ChartTitle: United States Possession Approaches to Johnston Atoll

Main Panel 2844 APPROACHES TO JOHNSTON ATOLL. Page/Side: N/A

LAST EDITION No new editions of chart 83633 will be published. It will be canceled on 04-Dec-24. Comparable or larger scale Electronic Navigational Chart (ENC) coverage is available. See "Cancellation of NOAA Paper and Raster Nautical Charts" in Section I of this LNM for details. A list of all canceled NOAA charts is at <https://www.charts.noaa.gov/MCD/Dole.shtml>.

NOS  
--

--

**OIL RIG MOVEMENT**

**Drill Rigs/Vessels Removed**

<u>Latitude</u>	<u>Longitude</u>	<u>Block</u>	<u>Rigs/Vessel</u>	<u>Chart</u>	<u>Type</u>	<u>Status</u>
<b>None</b>						

**Drill Rigs/Vessels Established**

<u>Latitude</u>	<u>Longitude</u>	<u>Block</u>	<u>Rigs/Vessel</u>	<u>Chart</u>	<u>Type</u>	<u>Status</u>
<b>None</b>						

**SECTION V - ADVANCE NOTICES**

This section contains advance notice of approved projects, changes to aids to navigation, or upcoming temporary changes such as dredging, etc. Mariners are advised to use caution while transiting these areas.

**SUMMARY OF ADVANCED APPROVED PROJECTS**

<u>Approved Project(s)</u>	<u>Project Date</u>	<u>Ref. LNM</u>
<b>None</b>		

**Advance Notice(s)**

**HI ISLANDS - OAHU – HONOLULU HARBOR (37/24)**

The Coast Guard plans to light Honolulu Harbor Channel Buoy 3 (LLNR 29200) with a Flashing Green, 6 second, 4 nautical mile range characteristic and light Honolulu Harbor Channel Buoy 4 (LLNR 29205) with a Flashing Red, 6 second, 4 nautical mile range characteristic to enhance visibility based on mariner requests. The Coast Guard welcomes public comment on these changes. Please contact the Fourteenth Coast Guard District Waterways Management Branch at (808) 535-3275 or via email at D14-DG-PJ-dpw@uscg.mil to comment.

**SECTION VI - PROPOSED CHANGES**

Periodically, the Coast Guard evaluates its system of aids to navigation to determine whether the conditions for which the aids to navigation were established have changed. When changes occur, the feasibility of improving, relocating, replacing, or discontinuing aids are considered. This section contains notice(s) of non-approved, proposed projects open for comment. SPECIAL NOTE: Mariners are requested to respond in writing to the District office unless otherwise noted (see banner page for address).

**PROPOSED WATERWAY PROJECTS OPEN FOR PUBLIC COMMENT**

<u>Proposed Project(s)</u>	<u>Closing</u>	<u>Docket No.</u>	<u>Ref. LNM</u>
<b>None</b>			

**Proposed Change Notice(s)**

**HI ISLANDS - MAUI – LAHAINA BOAT BASIN RANGE FRONT AND REAR LIGHTS (04/24)**

The Coast Guard is proposing to convert Lahaina Boat Basin Range Front Light (LLNR 28470) and Lahaina Boat Basin Range Rear Light (LLNR 28475) to lighted only 24 hours a day with no range board markings. Advances in LED Lantern technology allow the range lights to be visible in daytime and nighttime conditions to serve mariners navigation needs while making the aids more reliable and safer to service. The Coast Guard welcomes public comment on the proposal. Please contact the Fourteenth Coast Guard District, at (808) 535-3275, or via email at D14-DG-PJ-dpw@uscg.mil, to comment.

**SECTION VII - GENERAL**

This section contains information of general concern to the Mariners. Mariners are advised to use caution while transiting these areas.

**HI ISLANDS - MAIN HI ISLANDS - GLIDER OPERATIONS (33/24)**

Liquid Robotics ([www.liquid-robotics.com](http://www.liquid-robotics.com)) will be conducting continuous autonomous, unmanned maritime vehicle operations from 01 OCT 2024 through 31 JAN 2025 along the coastal waters of the main Hawaiian Islands using three uncrewed autonomous vehicles, SV3 Wave Gliders. Each vehicle will use a different distance from shore (1.5, 3 and 6 km).

## HI ISLANDS - MAIN HI ISLANDS - GLIDER OPERATIONS (33/24)

Operations consist of scientific ocean data collection. Wave Glider carries no fuel, lubricants, or hydrocarbons, is wave powered, remotely attended 24/7 from our Wave Glider Operations Center (WGOC), moving at speeds of typically 1kt, and designed to give way if encountered by a vessel. It is surfboard size, copper in color, with a contact plaque and mast extending 1 meter above the surface supporting a flag and a white light. Mariners are urged to transit the area with caution. For up-to-date information, mariners can contact Liquid Robotics Operations Center at +1 703 376 9300, or by email at support@liquid-robotics.com.

## PRIVATE AIDS TO NAVIGATION (01/08)

The term private aids to navigation (ATON) includes all marine aids to navigation operated in the navigable waters of the United States other than those operated by the Federal Government. Private ATON includes lighted structures and day beacons, lighted and unlighted buoys, RACONS and fog signals. Almost half of the aids to navigation established in the Fourteenth District are operated and maintained by private interests. These interests include private citizens, marina and yacht clubs, municipal and state governments, construction and dredging companies, research and non-profit organizations, beachfront associations, and large industrial concerns.

No person, public body or instrumentality not under the control of the Commandant, exclusive of the Armed Forces, shall establish and maintain, discontinue, change or transfer ownership of any aid to maritime navigation, without first obtaining permission to do so from the Commandant and the Army Corps of Engineers.

Owners contemplating establishing such buoys should review CFR 33 Part 66 and contact the appropriate authority, usually the Army Corps of Engineers, to determine what additional requirements may exist. Additionally, private aids on navigable waters regulated by the federal government require either a Coast Guard permit or Coast Guard letter of no objection. The application for a letter of no objection or for a permit, form CG-2554, can be obtained by emailing the Private ATON Manager at the email given below.

The Private ATON Manager provides applicants assistance in processing their paperwork. Federal regulations governing aids to navigation, copies of permits previously issued to the applicant, illustrations of standard markings, and lists of commercial ATON manufacturers are available. Questions and requests should be directed to:

Commander (dpw)  
Fourteenth Coast Guard District  
300 Ala Moana Boulevard, 9-220  
Honolulu, HI 96850-4982  
Attn: Private ATON Manager  
Tel: (808) 535-3409 / 3408  
Email: D14-DG-PJ-dpw@uscg.mil

U.S. Army Corps of Engineers  
Honolulu District  
Building 230  
Ft. Shafter, HI 96858-5440  
Attn: CEPOH-EC-R  
Phone: (808)-835-4004

Mariners are reminded that they have a responsibility to report discrepant private aids to the nearest Coast Guard unit. The failure of a mariner to report a discrepant aid to navigation may result in casualties to others. All aids to navigation in the Fourteenth District, both private and federally maintained, are user monitored. When owners receive discrepancy reports from the Coast Guard, they are obligated to take immediate action to correct the discrepancy. Owners are reminded of their responsibility for the proper operation and maintenance of their private aids to navigation. All classes of private aids to navigation shall be maintained in proper operating condition. They are subject to inspection by the Coast Guard at any time and without prior notice. The Coast Guard issues broadcast notice to mariners for reported discrepancies that remain in effect until the discrepancy is corrected or is published in the Local Notice to Mariners.

## FISH AGGREGATING DEVICE (FAD) BUOY INFORMATION AND DISCREPANCIES (28/21)

The State of Hawaii has placed Fish Aggregating Devices (FADs) in the waters surrounding the main Hawaiian Islands. These buoys attract schools of tuna and other important pelagic fishes, such as dolphinfish (Mahimahi), wahoo (Ono) and billfish. FADs allow fishermen to easily locate and catch these species. The buoys are anchored using approximately 2.5 miles of mooring line which creates a very large swing circle. Mariners are advised that these buoys may maneuver anywhere from three to five miles from their charted positions.

Mariners requesting up to date information concerning Hawaiian Island's FAD Buoys, or reports of discrepancies, may either visit the Hawaii FAD web site at <http://www.himb.hawaii.edu/fads>, contact Mr. Warren Cortez at (808) 956-0684, or send written correspondence to:

Mr. Warren Cortez  
Fish Aggregating Devices Program  
965 N. Nimitz Hwy  
Honolulu, HI 96817

Mariners requesting up to date information concerning Guam's FAD Buoys, or reports of discrepancies, may either visit the Guam FAD web site at [www.dawr.guam.gov](http://www.dawr.guam.gov), contact Mr. Brent Tibbatts at [Brent.Tibbatts@gmail.com](mailto:Brent.Tibbatts@gmail.com) 671.735.3955/56, or send written correspondence to:

Mr. Brent Tibbatts  
Guam Department of Agriculture  
Division of Aquatics and Wildlife Resources  
163 Dairy Road  
Mangilao, Guam 96913

### **NAVIGATION INTERNET SITES (33/05)**

Chart Corrections: <http://nauticalcharts.noaa.gov/mcd/updates/index.htm>  
Light List Corrections: <https://www.navcen.uscg.gov/index.php?pageName=lightLists>  
Coast Pilot Corrections: <http://nauticalcharts.noaa.gov/nsd/cpdownload.htm>  
NOAA Weather Buoy Sites: <http://www.ndbc.noaa.gov/Maps/rmd.shtml>  
Hawaii Weather: <http://www.prh.noaa.gov/pr/hnl/>  
Online Chart Viewer: <http://www.nauticalcharts.noaa.gov/mcd/OnLineViewer>

(For NOAA Print-on-Demand (POD) charts only)

NOAA and Coast Survey, in partnership with OceanGrafix, LLC, offer mariners official nautical charts that are continuously updated by NOAA cartographers up to the latest Notice to Mariners and to all Critical Safety Information known to the Coast Survey in advance of its publication in a Notice. From NOAA digital files, OceanGrafix prints corrected charts, to order, for sale to mariners through the OceanGrafix retail network. Produced and distributed by authority of NOAA, these charts meet all U.S. Coast Guard chart carriage requirements, including the requirements for updating (Titles 33 & 46 CFR). New Editions are available 2-8 weeks before their release as a traditional NOAA chart.

These new charts feature operational information for the commercial mariner, and education and safety information for the recreational boater. They have brighter colors and a higher contrast for better readability in various light conditions. They come either laminated or on water resistant paper.

POD charts are available through a POD chart agents at <http://OceanGrafix.com/>, 1-877-56CHART, or contact NOAA at <http://nauticalcharts.noaa.gov/pod/Pod.htm>. For questions contact NOAA at [help@nauticalcharts.gov](mailto:help@nauticalcharts.gov).

### **HI ISLANDS - U.S. DEPARTMENT OF HOMELAND SECURITY - DIVER SAFETY ADVISORY (25/09)**

This advisory is issued to increase the safety of all open water and waterway users throughout the Hawaiian Islands and is issued in conjunction with the Department of Land and Natural Resources (DLNR) pilot program focusing on diver safety.

Over the years there have been an increased number of reports of near misses between divers and waterborne crafts in Oahu, Maui and Hawaii. In most cases, these near misses have happened in near coastal waters and often when conditions were choppy.

The following suggested measures can help avoid near misses:  
Become familiar with your transit route and destination area before heading out.  
Remain vigilant of your surroundings and post extra lookouts in choppy waters and inclement weather.  
Stay clear of federal Aids to Navigation and commercial delineated channels.  
Use all appropriate sound and visual signals.  
Postpone trips until the weather and sea conditions improve.

All open water and waterway users are also highly encouraged to visit the Coast Guard Sector Honolulu Homeport website for Safety and Security Zone information for the Hawaiian Islands at: <http://homeport.uscg.mil/> under the Honolulu Port Directory tab and Safety and Security section.

The most updated charts for the Hawaiian Islands can be found on the National Oceanic and Atmospheric Administration (NOAA) website: <http://www.prh.noaa.gov/pr/hnl/> or <http://www.nauticalcharts.noaa.gov/mcd/OnLineViewer.html>.

Any and all life threatening or hazardous conditions including off station or missing buoys should be reported immediately to the U.S. Coast Guard at (808) 842-2600.

### **PACIFIC OCEAN - NATIONAL WILDLIFE REFUGE - RESTRICTED FOR ENTRY (22/11)**

The U.S. Department of the Interior, Fish and Wildlife Service, National Wildlife Refuge System, Pacific Reefs National Wildlife Refuge Complex manages ten National Wildlife Refuges within the Fourteenth Coast Guard District. Eight of these Refuges, described below, consist of waters and submerged and emergent lands. The remaining two Refuges, the Marianas Arc of Fire and the Mariana Trench National Wildlife Refuges, consist only of submerged lands.

The waters and submerged and emergent lands of National Wildlife Refuges are subject to the regulations governing the National Wildlife Refuge System found in Parts 25-32 of Title 50, Code of Federal Regulations. Therefore, except as provided by international law, these areas are closed to all forms of entry, other than innocent passage, unless specifically authorized by a Special Use Permit issued by the U.S. Fish and Wildlife Service. Should you have any questions, please contact the Pacific Reefs National Wildlife Refuge Complex by emailing the Project Leader at [Pacific\\_Reefs@fws.gov](mailto:Pacific_Reefs@fws.gov) or by calling 808-792-9560.

**Baker Island National Wildlife Refuge.** This Refuge includes all of Baker Island approximately at Latitude 0-11-45 North and Longitude 176-28-45 West, together with its territorial waters extending outward 12 nautical miles (13.8 mi; 22.2 km) from the mean low water line of the island.

**Howland Island National Wildlife Refuge.** This Refuge includes all of Howland Island approximately at Latitude 0-48-30 North and Longitude 176-37 West, together with its territorial waters extending outward 12 nautical miles (13.8 mi; 22.2 km) from the mean low water line of the island.

**Jarvis Island National Wildlife Refuge.** This Refuge includes all of Jarvis Island approximately at Latitude 0-22-20 South and Longitude 160-00 West, together with its territorial waters extending outward 12 nautical miles (13.8 mi; 22.2 km) from the mean low water line of the island.

**Johnston Atoll National Wildlife Refuge.** This Refuge includes all of Johnston Atoll approximately at Latitude 16-44 North and Longitude 169-31 West, together with its territorial waters extending outward 12 nautical miles (13.8 mi; 22.2 km) from the mean low water line of the atoll. However, portions of the emergent land at Johnston Atoll are currently under the administrative jurisdiction of the Department of the Air Force, which controls all access to areas under its administrative jurisdiction.

**Kingman Reef National Wildlife Refuge.** This Refuge includes all of Kingman Reef approximately at Latitude 6-24-30 North and Longitude 162-23-30 West, together with its territorial waters extending outward 12 nautical miles (13.8 mi; 22.2 km) from the mean low water line of the reef.

**PACIFIC OCEAN - NATIONAL WILDLIFE REFUGE - RESTRICTED FOR ENTRY (22/11)**

Palmyra Atoll National Wildlife Refuge. This Refuge includes all of Palmyra Atoll approximately at Latitude 05-53 North and Longitude 162-05 West, together with its territorial waters extending outward 12 nautical miles (13.8 mi; 22.2 km) from the mean low water line of the atoll. However, portions of the emergent land at Palmyra Atoll are currently owned and managed as a nature preserve by The Nature Conservancy, which controls all access to areas under its ownership.

**PACIFIC OCEAN - NATIONAL WILDLIFE REFUGE - RESTRICTED FOR ENTRY CONTINUED (22/11)**

Rose Atoll National Wildlife Refuge. This Refuge includes all of Rose Atoll approximately at Latitude 14-32-45 South and Longitude 168-9-24 West, the seaward extent being the extreme low water line outside the perimeter reef except at the entrance channel where the boundary is a line extended between the extreme low water lines on each side of the entrance channel.

Wake Atoll National Wildlife Refuge. This Refuge includes all of Wake Atoll approximately at Latitude 19-18 North and Longitude 166-38 East, together with its territorial waters extending outward 12 nautical miles (13.8 mi; 22.2 km) from the mean low water line of the atoll. However, in accordance with Presidential Proclamation No. 8336, the emergent land at Wake Atoll is currently under the management of the Department of the Air Force, which controls all access to areas under its management.

**HI ISLANDS - KAHO'OLAWE ISLAND RESERVE COMMISSION - NOTICE OF OPEN WATERS SCHEDULE (01/24)**

Notice to Trollers: The dates below mark the Permitted Trolling Schedule in Zone B for January -- December 2024. Hawaii Administrative Rules (H.A.R.) 13-261 requires that all vessels must register with the Kaho'olawe Island Reserve Commission (KIRC) before entering the Reserve to troll during designated Permitted Trolling dates. To register please contact Dean Tokishi at dean.tokishi@hawaii.gov 808-243-5022, visit Kahoolawe.hawaii.gov or pick up registration packet at the Division of Boating and Recreation.

12:01 a.m Saturdays to 11:59 p.m. Sundays as follows:

- January 20 – 21 ; 27 – 28
- February 03 – 04 ; 24 – 25
- March 02 – 03 ; 30 – 31
- April 13 – 14 ; 27 – 28
- May 11 – 12 ; 18 – 19
- June 08 – 09 ; 29 – 30
- July 13 – 14 ; 27 – 28
- August 03 – 04 ; 10 – 11
- September 07 – 08 ; 28 – 29
- October 12 – 13 ; 26 – 27
- November 02 – 03 ; 16 – 17
- December 14 – 15 ; 28 – 29

The Kaho'olawe Island Reserve (defined as the submerged lands and waters within two nautical miles of the island) is divided into two zones; Zones A and B. These zones are defined as:

- Zone A: Includes the island of Kaho'olawe and all the submerged lands and waters between the shoreline of Kaho'olawe and the 30-fathom (180 ft.) depth which surrounds Kaho'olawe (HAR 13-261). Unauthorized entry into Zone A is prohibited at all times except in case of emergency,
- Zone B: All waters and submerged lands between the 30-fathom (180 ft.) depth surrounding Kaho'olawe and two nautical miles from the shoreline of the island. Unauthorized entry into Zone B is prohibited at all times except for trolling as authorized by KIRC on the days stipulated by the Permitted Trolling Schedule as listed above or in case of emergency. Trollers must remain underway, making way at all times while in Zone B. ALL OTHER FISHING, OCEAN RECREATION, AND ANY OTHER ACTIVITIES ARE STRICTLY PROHIBITED.

WARNING! Kaho'olawe and its surrounding submerged lands and waters contain unknown quantities of unexploded ordnance which are hazardous to public health and safety.  
(Authority: (H.R.S. §6K, H.A.R. §13-261)

See enclosure 2

**HI ISLANDS - OAHU - KANEOHE BAY - MILITARY OPERATIONS (09/09)**

Military amphibious and search and rescue operations may be underway at any time, day or night, within Kaneohe Bay in the vicinity of 21-26-06.83N/157-46-11.00W and 21-26-45.00N/157-46-55.00W (approximately .5 NM south of Mokapu Peninsula). Support surface craft will be equipped with appropriate day/night signals and markings and can be reached on VHF-Ch 82. In the interest of safety, it is requested that all vessels that use Sonar contact Water Front Operations on VHF-Ch 82A or by phone at (808) 257-2941 to avoid injury to divers that may be in the area.

**HI ISLANDS - OAHU - KANEOHE BAY - PYRAMID ROCK - HAZARDOUS OPERATIONS (41/24)**

The Pyramid Rock / Fort Hase / Kaneohe Bay Danger Zone is located in ocean waters as described by the below coordinates and is closed at all times to surface craft, swimmers, and divers, with the exception of authorized personnel. Mark B.J. Edmonson at mark.bj.edmonson@usmc.mil.

The Danger Zone is bounded by the following coordinates:

- 21-27.97'N / 157-45.78'W
- 21-29.88'N / 157-44.78'W
- 21-29.38'N / 157-43.68'W
- 21-27.47'N / 157-44.68'W

The following are hazardous operations to mariners for October 09, 2024 through October 15, 2024:

**HI ISLANDS - OAHU - KANEOHE BAY - PYRAMID ROCK - HAZARDOUS OPERATIONS (41/24)**

09 Oct N/A  
10 Oct N/A  
11 Oct N/A  
12 Oct N/A  
13 Oct 0500 - 1500 Hale Koa, open swim  
14 Oct N/A  
15 Oct N/A  
see enclosure 1

**HI ISLANDS - OAHU - KANEOHE BAY - ULUPAU CRATER WEAPONS DANGER ZONE - HAZARDOUS OPERATIONS (41/24)**

All vessels/watercraft operating within the Mokapu Peninsula near the Ulupau Crater located on Marine Corps Base Hawaii shall vacate the danger zone at the best speed and by the most direct route.

Danger zone will include areas from (Zone 1 NE) 21°30'59.66"N /157°44'05.97"W to 21°29'16.58"N /157°40'30.19"W to (Zone 2 SE) 21°25'01.79"N/157°40'33.70"W to 21°27'11.84"N/157°43'53.83"W, forming a triangular figure.

The following are hazardous operations to mariners for October 09, 2024 through October 15, 2024:

Zone 1:

09 Oct 0600 - 2300  
10 Oct 0700 - 2000  
11 Oct N/A  
12 Oct N/A  
13 Oct N/A  
14 Oct N/A  
15 Oct 0600 - 2359

Zone 2:

09 Oct 0600 - 2300  
10 Oct 0700 - 2000  
11 Oct 0900 - 1700  
12 Oct N/A  
13 Oct N/A  
14 Oct N/A  
15 Oct 0000 - 0200

See enclosure 1

**HI ISLANDS - OAHU - WAIMANALO BAY - HAZARDOUS OPERATIONS (41/24)**

The Waimanalo Bay Danger Zone is located in ocean waters as described by the below coordinates and is closed at all times to surface craft, swimmers, and divers, with the exception of authorized personnel. Mark B.J. Edmonson at mark.bj.edmonson@usmc.mil.

The Danger Zone is bounded by the following coordinates:

21-21'11"N / 157-42'16"W  
21-21'10"N / 157-42'24"W  
21-21'50"N / 157-42'34"W  
21-21'49"N / 157-42'28"W

The following are hazardous operations to mariners for October 09, 2024 through October 15, 2024:

09 Oct N/A  
10 Oct N/A  
11 Oct N/A  
12 Oct N/A  
13 Oct N/A  
14 Oct N/A  
15 Oct N/A

See enclosure 1

**HI ISLANDS - OAHU - EWA BEACH - HAZARDOUS OPERATIONS (41/24)**

The Puuloa Danger Zone is located in ocean waters as described by the below coordinates and is closed at all times to surface craft, swimmers, and divers, with the exception of authorized personnel. Mark B.J. Edmonson at mark.bj.edmonson@usmc.mil.

The Danger Zone is bounded by the following coordinates:

21-18-21N / 157-59-14W  
21-18-11N / 158-00-17W  
21-17-11N / 158-00-06W  
21-17-22N / 157-59-03W

**HI ISLANDS - OAHU - EWA BEACH - HAZARDOUS OPERATIONS (41/24)**

The following are hazardous operations to mariners for October 09, 2024 through October 15, 2024:

- 09 Oct 0700 - 1700
- 10 Oct 0700 - 1700
- 11 Oct 0700 - 1700
- 12 Oct N/A
- 13 Oct N/A
- 14 Oct N/A
- 15 Oct 0700 - 1700

See enclosure 1

**HI ISLANDS - SOUTH COAST OAHU - HAZARDOUS OPERATIONS - HOT AREAS (43/23)**

FACSFAC Pearl Harbor established Special Operating Areas Four (SOA-4) as a permanent "HOT AREA" named "KAPU" on April 15, 1995. FACSFAC effective hours are 0700W to 2300W (Monday - Saturday from 1700Z - 0900Z) Monday - Friday, and on weekend's 0800W - 1600W (Weekends from 1800Z - 0200Z) or by request. Activities include intermittent naval gunnery exercises and airborne ordnance drops. "KAPU" is also designated as the emergency jettison area for aircraft with hung stores, etc. Hot area "KAPU" is bounded by the following coordinates 20-46N/158-16W, 20-42 N/158-04W, 20-13N/158-36W and 20-04N/158-11W. Scheduling authority is FACSFAC Pearl Harbor call-sign "HULA DANCER". "HULA DANCER" can be reached on primary 266.4/127.0 MHz, or secondary 336.8/132.4 MHZ or telephone (808) 472-7333/7337 and may authorize transits through these areas on a case-by-case basis.

**HI ISLANDS - KAUAI - BARKING SANDS - PACIFIC MISSILE RANGE FACILITY HI AREA - HOT AREAS (43/23)**

The following area is established as a safety zone during launch operations at PMRF, Kauai, Hawaii: The waters bounded by the following coordinates: (22°01.2' N, 159°47.3' W), (22°01.2' N, 159°50.7' W), (22°06.3' N, 159°50.7' W), (22°06.3' N, 159°44.8' W). (Datum: OHD) The above safety zone will be activated during launch operations at PMRF, Kauai, Hawaii. The Coast Guard will provide notice that the safety zone will be activated through published and broadcast local notice to mariners prior to scheduled launch dates. The area described of this section will be closed to all vessels and persons, except those vessels and persons authorized by the Commander, Fourteenth Coast Guard District, or the Captain of the Port (COTP) Honolulu, Hawaii, whenever Strategic Target System (STARS) vehicles are to be launched by the United States Government from the PMRF, Barking Sands, Kauai, Hawaii. The general regulations governing safety zones contained in 33 CFR 165.23 apply. Nomenclature changes to part 165 appear by USCG-2006-25556, 72 FR 36328, 36329 preview citation details, July 2, 2007 and by USCG-2018-1049, 84 FR 7813, Mar. 5, 2019.

**HI ISLANDS - KAUAI - BARKING SANDS - PACIFIC MISSILE RANGE FACILITY HI AREA - HAZARDOUS OPERATIONS (41/24)**

Intermittent missile firing operations are conducted by the Pacific Missile Range Facility (PMRF), Barking Sands, Kauai, in the Whiskey 188 (W-188) operating area. Operations are conducted periodically throughout each week in an area bound by the following coordinates:

- 22:00N/159:51W, 22:00N/160:00W, 22:04N/160:06W, 21:59.5N/160:21W, 22:05N/161:35W, 22:45N/161:25W, 22:56N/161:49W,
- 23:34N/161:18.6W, 23:57N/160:41W, 25:41N/161:36W, 26:00N/159:58W, 25:47N/158:15W, 23:54N/158:15W, 22:20N/159:09W,
- 22:21N/159:30W, 22:13N/159:42W, 22:00N/159:51W

Intermittent high power radar operations are conducted by PMRF at the following position: 22:03N/159:47W

Request all mariners remain at least one mile off the coastline between Kokole Point and Nohili Point.

Vessels may be requested to alter course due to firing operations and are requested to contact "Pacific Missile Range Facility" on VHF-Ch 16 prior to entering the above boundaries. If unable to contact the PMRF prior to entering or while in the warning area, relay messages through U.S. Coast Guard Honolulu. Vessels inbound and outbound for Hawaiian ports will create the least interference to firing operations as well as enhance vessel's safety by passing South of the Islands of Kauai and Niihau during the specified times. Federal law provides for civil penalties of \$40,000 and/or criminal penalties of 6 years in prison for each violation of the PMRF safety zone during the schedule of designated activity (33CFR 165.1406).

The following are hazardous operations to mariners for October 10, 2024 through October 16, 2024:

- 10 OCT NO HAZARDOUS OPERATIONS SCHEDULED.
- 11 OCT NO HAZARDOUS OPERATIONS SCHEDULED.
- 12 OCT NO HAZARDOUS OPERATIONS SCHEDULED.
- 13 OCT NO HAZARDOUS OPERATIONS SCHEDULED.
- 14 OCT NO HAZARDOUS OPERATIONS SCHEDULED.
- 15 OCT NO HAZARDOUS OPERATIONS SCHEDULED.
- 16 OCT NO HAZARDOUS OPERATIONS SCHEDULED.
- 09 OCT 0630 - 1730 KAULAKAHI CHANNEL AND NOHILI POINT TO 60 NM WEST THROUGH NORTH.

**MARINE EVENTS**

This section contains information of general concern to the mariner. All event forms must be received no later than noon on Tuesday a week prior to the event. Mariners are advised to use caution while transiting these areas:

**HI ISLANDS - OAHU - FIREWORKS (01/24)**

Hawaii Explosives and Pyrotechnics, Inc. will be conducting a land fireworks display neighboring Duke Kahanamoku Beach on Fridays from 1915 - 2030 January 05, 2024 to December 28, 2024. Please require all vessels to observe the safety/fallout zone radius from the firing site. Vessels and spectators are advised to maintain a distance of at least 210 feet radius from the launch site.

**HI ISLANDS - OAHU - FIREWORKS (01/24)**

Contact (808) 968-0600 for further information.

See enclosure 3

**HI ISLANDS - MAUI - FIREWORKS (39/24)**

Hawaii Explosives and Pyrotechnics, Inc. will be conducting an offshore fireworks display in Fleming Beach on October 7, 2024 from 2000-2100.

**HI ISLANDS - OAHU - MOLOKAI HOE CANOE RACE (40/24)**

There will be a canoe race through the Ka'iwi Channel from Hale O Lono Harbor on Molokai to Hilton Hawaiian Village pier on Oahu October 13, 2024 from 0800-1600.

**HI ISLANDS - HAWAII - IRONMAN WORLD CHAMPIONSHIP PRACTICE SWIM (41/24)**

The Ironman World Championship will be hosting a practice swim on the island of Hawaii from Kailua Pier to about 3 miles southeast in Kahului Bay.

Swim will take place 10/20/2024 from 0345-1330. There will be about 1200 participants and 7 teams of rescue boats/skis.

---

---

**SECTION VIII - LIGHT LIST CORRECTIONS**

An Asterisk \*, indicates the column in which a correction has been made to new information

(1) No.	(2) Name and Location	(3) Position	(4) Characteristic	(5) Height	(6) Range	(7) Structure	(8) Remarks
28105	<i>Hilo Harbor Lighted Buoy 9</i>	19-44-03.690N 155-03-28.222W	FI G 2.5s (NIGHT)		4 4	Green.	AIS: MMSI 993699982 41/24
			FI G 2.5s				
			*		*		

---

---

**PUBLICATION CORRECTIONS**

**None**

---

---

**ENCLOSURES**

**ENCLOSURE (1)**

HI ISLANDS - OAHU - KANEHOE BAY HAZARDOUS OPERATIONS (18/07)

**ENCLOSURE (2)**

HI ISLANDS - KAHOLAWE ISLAND RESERVE COMMISSION - NOTICE OF OPEN WATERS SCHEDULE 2024 (01/24)

**ENCLOSURE (3)**

HI ISLANDS - OAHU - HONOLULU FIREWORKS (01/24)

**ENCLOSURE (4)**

\*\*\* CHANGES TO THE USCG LNM AND LIGHT LISTS \*\*\*

**ENCLOSURE (5)**

HI ISLANDS - OAHU - SMALL BOAT AND DIVING OPERATIONS (39/24)

---

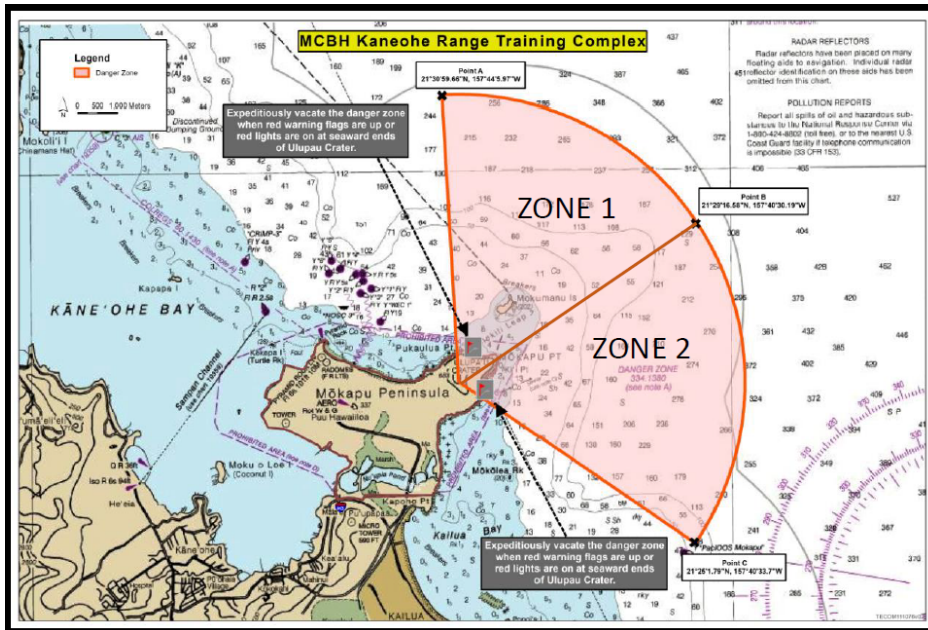
---

M. Day  
Rear Admiral, U.S. Coast Guard

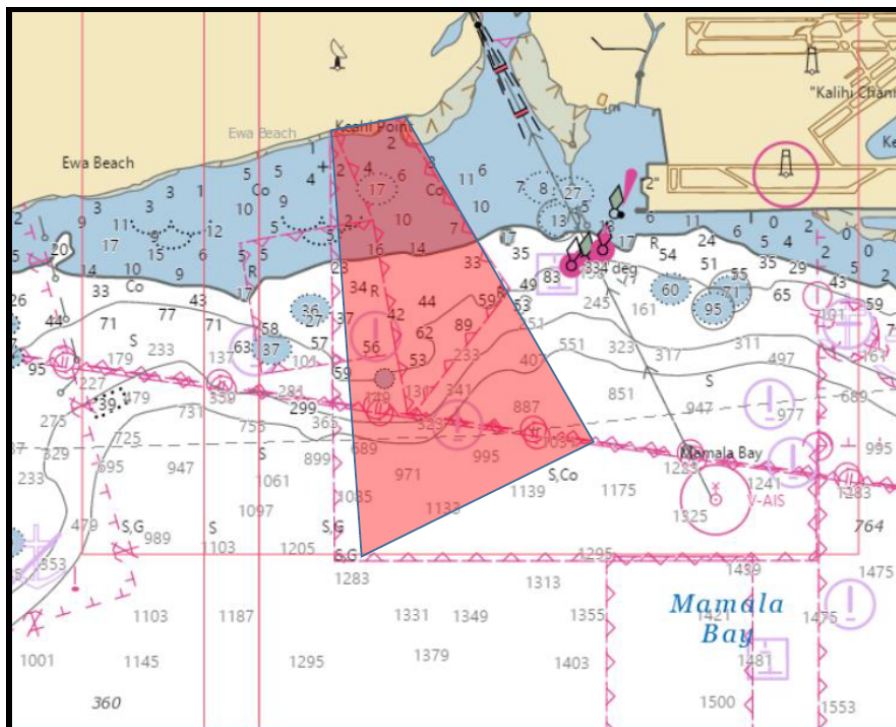




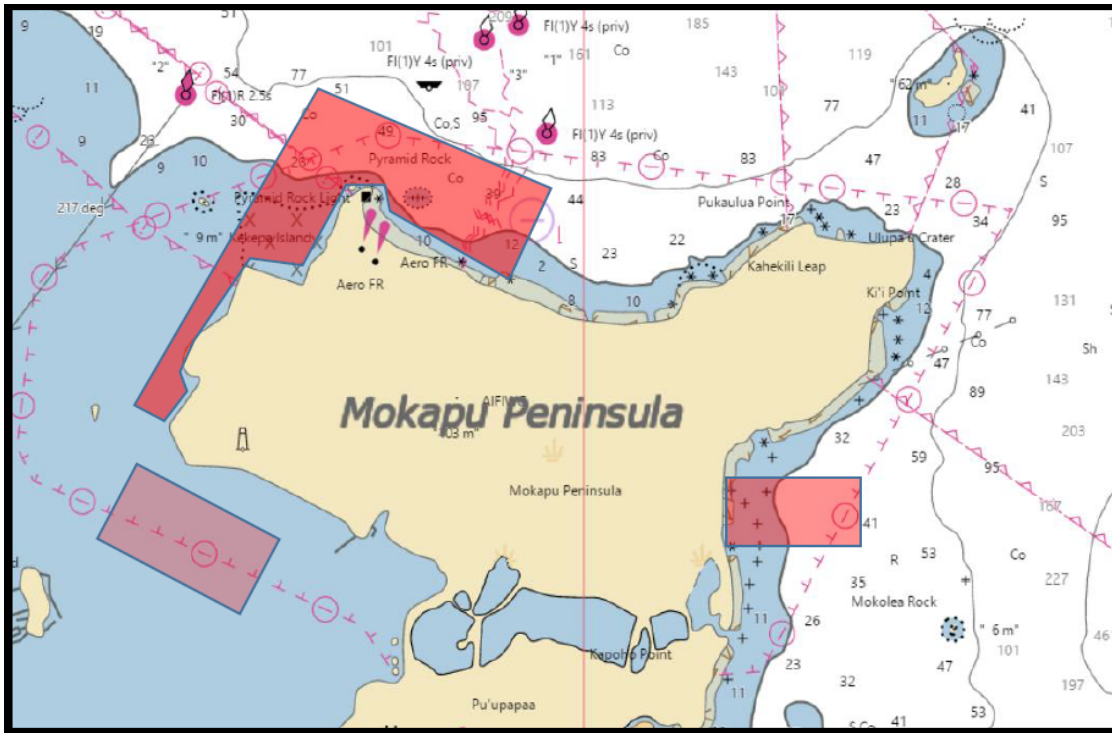
# Mokapu Point



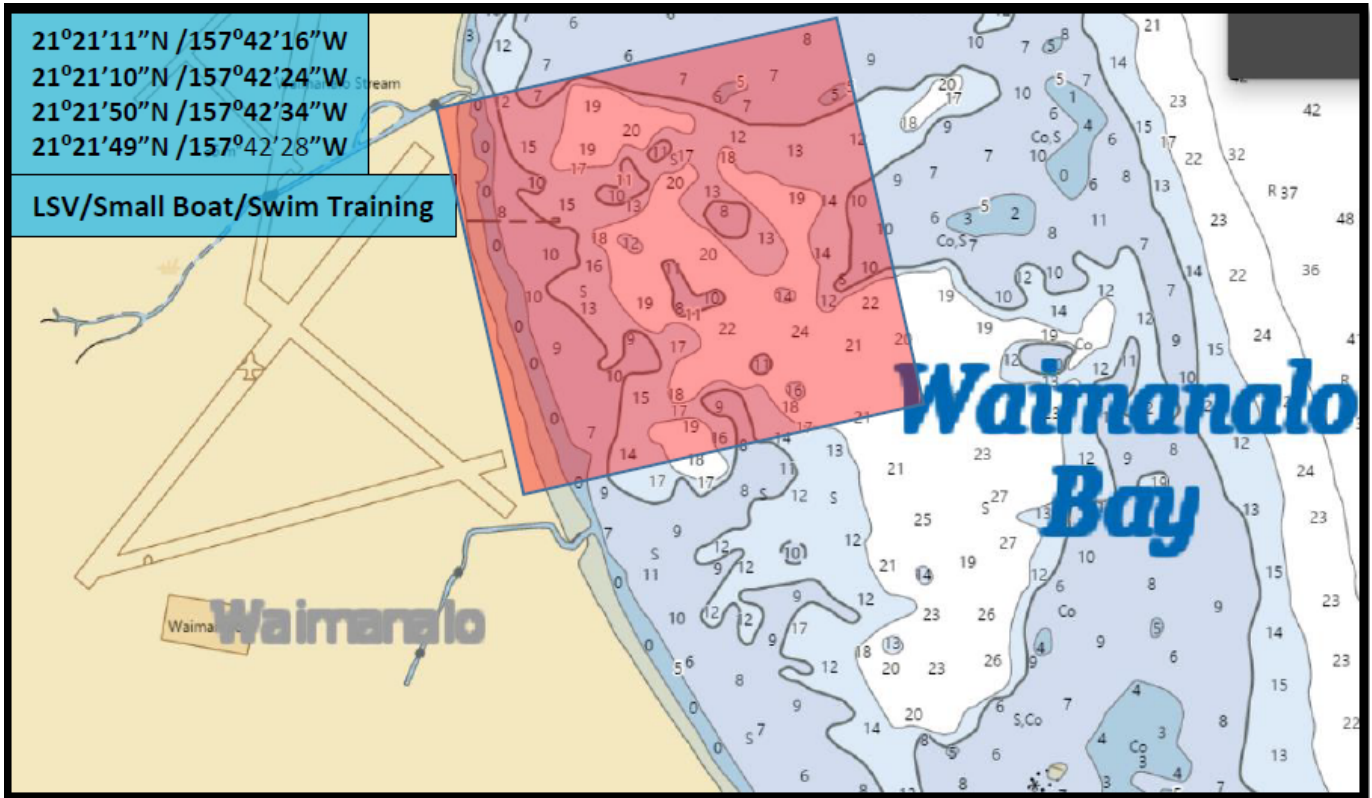
# Ewa Beach



## Pyramid Rock/Fort Hase/Kaneohe Bay



## Waimanalo Bay





*Sea loach*



SAUMALU MATAAFA  
Acting Chairperson

DAWN N.S. CHANG  
'ĀNELA EVANS  
BENTON KEALII PANG, Ph.D  
MICHELLE PESCAIA

Michael K. Nāho'opi'i  
Executive Director

KŪKULU KE EA A KANALOA  
**KAHO'OLAWE ISLAND RESERVE COMMISSION**  
**KŌMIKINA MĀLAMA KAHO'OLAWE**

811 Kolu Street, Suite 201, Wailuku, HI 96793  
Telephone (808) 243-5020 Fax (808) 243-5885  
Website: <http://kahoolawe.hawaii.gov>

**Notice of Permitted Trolling Schedule:**

*January-December 2024*  
*Kaho'olawe Island Reserve*  
**Zone B (> 30 fathoms)**

Notice to Trollers: The dates below mark the Permitted Trolling Schedule in Zone B for January -- December 2024. **Hawaii Administrative Rules (H.A.R) 13-261 requires that all vessels must register with the Kaho'olawe Island Reserve Commission (KIRC) before entering the Reserve to troll during designated Permitted Trolling dates. To register please contact Dean Tokishi at [dean.tokishi@hawaii.gov](mailto:dean.tokishi@hawaii.gov) 808-243-5022, visit [Kahoolawe.hawaii.gov](http://Kahoolawe.hawaii.gov) or pick up registration packet at the Division of Boating and Recreation.**

**12:01 a.m Saturdays to 11:59 p.m Sundays as follows:**

January	20 -21; 27 - 28	July	13 -14; 27 - 28
February	03 -04; 24 - 25	August	03 -04; 10 - 11
March	02 -03; 30 - 31	September	07 -08; 28 - 29
April	13 -14; 27 - 28	October	12 -13; 26 - 27
May	11 -12; 18 - 19	November	02 -03; 16 - 17
June	08 -09; 29 - 30	December	14 -15; 28 - 29

*The Kaho'olawe Island Reserve (defined as the submerged lands and waters within two nautical miles of the island) is divided into two zones; Zones A and B. These zones are defined as:*

**Zone A:** Includes the island of Kaho'olawe and all the submerged lands and waters between the shoreline of Kaho'olawe and the 30-fathom (180 ft.) depth which surrounds Kaho'olawe (HAR 13-261). **Unauthorized entry into Zone A is prohibited at all times except in case of emergency.**

**Zone B:** All waters and submerged lands between the 30-fathom (180 ft.) depth surrounding Kaho'olawe and two nautical miles from the shoreline of the island. Unauthorized entry into Zone B is prohibited at all times except for trolling as authorized by KIRC on the days stipulated by the Permitted Trolling Schedule as listed above or in case of emergency. Trollers must remain underway, making way at all times while in Zone B. **ALL OTHER FISHING, OCEAN RECREATION, AND ANY OTHER ACTIVITIES ARE STRICTLY PROHIBITED.**

**WARNING! Kaho'olawe and its surrounding submerged lands and waters contain unknown quantities of unexploded ordnance which are hazardous to public health and safety.**

(Authority: (H.R.S. §6K, H.A.R. §13-261))

# Hawaii Explosives & Pyrotechnics, Inc.

P.O. Box 1244  
Keaau, HI 96749-1244  
hepinc@hipyro.com



December 26, 2023

Commander 14<sup>th</sup> Coast Guard District (OAN)  
PJKK Federal Building, Room 9-236  
300 Ala Moana Blvd.  
Honolulu, HI 96850-4982

Dear Commander:

Hawaii Explosives & Pyrotechnics, Inc. is requesting a "Notice to Mariners" for a land fireworks display on Duke Kahanamoku Beach. Please require all vessels to observe the safety zone radius. (Site Map Attached) Display specifics are as follows:

2024						2024					
January	5	12	19	26		July	5	12	19	26	
February	2	9	16	23		August	2	9	16	23	30
March	1	8	15	22	29	September	6	13	20	27	
April	5	12	19	26		October	4	11	18	25	
May	3	10	17	24	31	November	1	8	15	22	29
June	7	14	21	28		December	6	13	20	27	

Event: Friday Night Fireworks @ Hilton Hawaiian Village  
 Firing Site: Duke Kahanamoku Beach  
 Firing Times: 7:45 p.m. (October thru April) 8:00 p.m. (May thru September)  
 Firing Windows: 7:15 p.m. to 8:15 p.m. 7:30 p.m. to 8:30 p.m.  
 Safety Zone: 210' radius of firing site  
 Length of Display: 4 minutes

Should you have any questions, please feel free to contact me at our Big Island office at (808) 968-0600. Thank you for your assistance with this matter

Sincerely,

*Paulette L Smith*

Paulette L Smith  
Permitting Specialist/Admin Assist

## Enclosure 4

### Notice: Changes to the USCG Local Notice to Mariners (LNM) and Light Lists

The U.S. Coast Guard Navigation Center announces upcoming changes to the Local Notice to Mariners (LNM) and the Light List, as part of our efforts to modernize and improve the accessibility, accuracy, and overall user experience for mariners and other stakeholders.

#### What Is Changing?

- 1. Transition From Paper Charts:** In January 2025, NOAA will discontinue the production of all paper charts. In alignment with this change, the Coast Guard will transition from using NOAA Paper Chart Numbers and Editions/Dates for disseminating Marine Safety Information (MSI) to using Official Waterway Names.
- 2. How You Will Access LNMs and Light Lists:** The LNM and Light List data will now be available in a geospatial format, which will allow you to visualize information interactively on a map/chart. You can use your mouse wheel or the +/- buttons in the upper left portion of the screen to zoom in or out and navigate to your desired area on the map/chart. Once the area is displayed, you can generate a PDF of the LNM or Light List for that specific area, which you can then save and/or print. Alternatively, you can use a fillable form on our website to select your waterway by name from the Light List and generate the LNM or Light List.
- 3. LNM and Light List Data Refresh Rate:** LNM data will be refreshed every fifteen minutes. Light List data will be refreshed every 24 hours. This will give you a much more up-to-date operating picture, designed to enhance your efficiency and improve safety in your area of transit or planned routes.
- 4. Elimination of Weekly Files:** Weekly LNMs, Weekly Light List Correction Files, Daily Discrepancy Files, and the Summary of Light List Changes will no longer be published to focus on providing the most up-to-date and accessible format. In the near future, we will also publish an Application Programming Interface (API) for interested parties to access the data externally.

#### Why Are These Changes Being Made?

The modernization of MSI delivery is designed to improve the U.S. Coast Guard's aid-to-navigation data management and dissemination capabilities. By providing frequent updates, geospatial visualization, and digital access, we hope to achieve our goals of:

- **Enhancing Maritime Safety:** By delivering the most current and precise information, mariners can make better-informed decisions, reducing the risk of accidents and ensuring safer navigation.
- **Improving Accessibility:** The shift to geospatial visualization makes it easier for all users, from commercial mariners to recreational boaters, to stay informed.
- **Increasing Efficiency:** The integration of LNM and Light List data into a geospatial format to simplify the gathering of safety information and facilitate easy route planning.

## Enclosure 4

### **When Will These Changes Take Effect?**

The transition to the modernized LNM and Light List platform (the Navigation Center website) will be completed by Monday, September 30<sup>th</sup>.

### **How to Access the New Features?**

Starting on September 30<sup>th</sup>, 2024, you will be able to access the updated LNM and Light List through the NAVCEN website. A User Guide will be available on the NAVCEN website. Customers will still have the ability to download legacy versions of these products until October 21st.

For any questions or assistance, please visit our [Contact Us Page](#), select 'LNMs or Light Lists' from the Subject dropdown, and submit your inquiry.

Thank you for your continued support as we work to improve the safety and efficiency of maritime navigation.

**U.S. Coast Guard Navigation Center ([www.navcen.uscg.gov](http://www.navcen.uscg.gov))**

# NOAA, Coral Restoration Project, Kalaeloa Barbers Point Harbor Entrance Channel, Kapolei, Island of O'ahu, HI

## Notice to Mariners:



*Ko Olina Mariana, Barbers Point Harbor and entrance channel with orange box indicating operational area (left). Diagram of diving and boating operations (right). Red line indicates the southern edge of the channel. Yellow dashed line indicates restoration focus area where dive operations will occur. Float 1 will be located over the restoration area near divers. Float 2 will be located ~ 60m from the restoration area where divers will be recovered.*