



U.S. Department  
of Homeland Security  
**United States  
Coast Guard**

## LOCAL NOTICE TO MARINERS

**District: 13**

**Week: 23/24**

ISSUED BY: COMMANDER, THIRTEENTH COAST GUARD DISTRICT (dpw)  
915 Second Avenue, 35th Floor, Rm 3510, Seattle, Washington 98174-1067  
Telephone: (206) 220-7280  
Email: D13-SMB-D13-LNM@uscg.mil  
<https://www.pacificarea.uscg.mil/Our-Organization/District-13/District-Staff/-dpw/>  
<https://www.navcen.uscg.gov/local-notice-to-mariners?district=13+0&subdistrict=wn>

For all Notice to Mariner submissions:  
Call (206) 220-7280 or email D13-SMB-D13-LNM@uscg.mil at least two weeks prior to the start of your event or work.

COMDTUPB P16502.6, Light List Volume VI, Pacific Coast and Pacific Islands, 2024 Edition, is available at  
[https://www.navcen.uscg.gov/sites/default/files/pdf/lightLists/LightList\\_V6\\_2024.pdf](https://www.navcen.uscg.gov/sites/default/files/pdf/lightLists/LightList_V6_2024.pdf)  
Coast Pilot Volume 10, Oregon, Washington, Hawaii and Pacific Islands, 2023 (4th) Edition, is available at  
[https://www.nauticalcharts.noaa.gov/publications/coast-pilot/files/cp10/CPB10\\_WEB.pdf](https://www.nauticalcharts.noaa.gov/publications/coast-pilot/files/cp10/CPB10_WEB.pdf)

Coast Pilots, along with corrections, are available at: [www.nauticalcharts.noaa.gov/publications/coast-pilot/index.html](http://www.nauticalcharts.noaa.gov/publications/coast-pilot/index.html). Print on Demand (POD) copies are available for purchase at: [www.nauticalcharts.noaa.gov/publications/print-agents.html#coast-pilot](http://www.nauticalcharts.noaa.gov/publications/print-agents.html#coast-pilot).

### UNITED STATES COAST GUARD NAVIGATION INFORMATION SERVICE (NIS)

The United States Coast Guard Navigation Information Service (NIS), operated by the USCG Navigation Center, is staffed 24 hours a day, 7 days a week. The NIS provides information on the current operational status, effective policies, and general information for GPS and DGPS. The NIS also disseminates Safety Broadcasts / Broadcast Notice to Mariners (BNM), Local Notice to Mariners (LNM), and the latest Notice Advisory to Navstar Users (NANU). LNM, BNM and other navigation notices can be obtained via e-mail subscription through the USCG Navigation Center website:

<https://www.navcen.uscg.gov/subscribe-email-rss-feeds>

In addition, the NIS investigates all reports of degradation or loss of GPS service and discrepancies to Aids to Navigation. Mariners are encouraged to report all degradation of radio navigation services, or Aids to Navigation discrepancies to the NIS via phone: (703) 313-5900 or online at: <https://www.navcen.uscg.gov/report-a-problem>

### BROADCAST NOTICE TO MARINERS

Urgent marine navigational and weather information is broadcast over VHF channel 22A (157.1 MHz). Broadcasts are initially announced over the distress, safety and calling channel 16 before they are made on channel 22A. All ships in U.S. waters over 20 meters in length are required to monitor VHF channel 16, and must have radios capable of tuning to the VHF simplex channel 22A. BNM are now available online as well. To view or download District 13 BNM's visit <https://www.navcen.uscg.gov/broadcast-notice-to-mariners-search?district=13>

This section contains a range of all the significant Broadcast Notice to Mariners (BNM's) on the date of this edition.

Originating Unit CGD THIRTEEN	Beginning BNM D13-0394-24	Ending BNM D13-0412-24
----------------------------------	------------------------------	---------------------------

## ABBREVIATIONS

### A through H

ADRIFT - Buoy Adrift  
AICW - Atlantic Intracoastal Waterway  
AI - Alternating  
B - Buoy  
BKW - Breakwater  
bl - Blast  
BNM - Broadcast Notice to Mariner  
bu - Blue  
C - Canadian  
CHAN - Channel  
CGD - Coast Guard District  
C/O - Cut Off  
CONT - Contour  
CRK - Creek  
CONST - Construction  
DAYMK/Daymk - Daymark  
DBN/Dbn - Daybeacon  
DBD/DAYBD - Dayboard

### I through O

I - Interrupted  
ICW - Intracoastal Waterway  
IMCH - Improper Characteristic  
INL - Inlet  
INOP - Not Operating  
INT - Intensity  
ISL - Islet  
Iso - Isophase  
kHz - Kilohertz  
LAT - Latitude  
LB - Lighted Buoy  
LBB - Lighted Bell Buoy  
LHB - Lighted Horn Buoy  
LGB - Lighted Gong Buoy  
LONG - Longitude  
LNM - Local Notice to Mariners  
LT - Light  
LT CONT - Light Continuous

### P through Z

PRIV - Private Aid  
Q - Quick  
R - Red  
RACON - Radar Transponder Beacon  
Ra ref - Radar reflector  
RBN - Radio Beacon  
REBUILT - Aid Rebuilt  
RECOVERED - Aid Recovered  
RED - Red Buoy  
REFL - Reflective  
RRL - Range Rear Light  
RELIGHTED - Aid Relit  
RELOC - Relocated  
RESET ON STATION - Aid Reset on Station  
RFL - Range Front Light  
RIV - River  
RRASS - Remote Radio Activated Sound Signal  
s - seconds

DEFAC - Defaced  
DEST - Destroyed  
DISCON - Discontinued  
DMGD/DAMGD - Damaged  
ec - eclipse  
EST - Established Aid  
ev - every  
EVAL - Evaluation  
EXT - Extinguished  
F - Fixed  
fl - flash  
Fl - Flashing  
G - Green  
GIWW - Gulf Intracoastal Waterway  
HAZ - Hazard to Navigation  
HBR - Harbor  
HOR - Horizontal Clearance  
HT - Height

LTR - Letter  
LWB - Lighted Whistle Buoy  
LWP - Left Watching Properly  
MHz - Megahertz  
MISS/MSNG - Missing  
Mo - Morse Code  
MRASS - Marine Radio Activated Sound Signal  
MSLD - Misleading  
N/C - Not Charted  
NGA - National Geospatial-Intelligence Agency  
NO/NUM - Number  
NOS - National Ocean Service  
NW - Notice Writer  
OBSCU - Obscured  
OBST - Obstruction  
OBSTR - Obstruction  
Oc - Occulting  
ODAS - Anchored Oceanographic Data Buoy

SEC - Section  
SHL - Shoaling  
si - silent  
SIG - Signal  
SND - Sound  
SPM - Single Point Mooring Buoy  
SS - Sound Signal  
STA - Station  
STRUCT - Structure  
St M - Statute Mile  
TEMP - Temporary Aid Change  
TMK - Topmark  
TRLB - Temporarily Replaced by Lighted Buoy  
TRLT - Temporarily Replaced by Light  
TRUB - Temporarily Replaced by Unlighted Buoy  
USACE - Army Corps of Engineers  
W - White  
Y - Yellow

**Additional Abbreviations Specific to this LNM Edition:**

AtoN - Aids to Navigation  
COTP - Captain of the Port  
CPA - Closest Point of Approach  
LLNR - Light List Number

NAVCEN - U.S. Coast Guard Navigation Center  
NM - Nautical Miles  
ODOT - Oregon Department of Transportation  
RM - River Mile Marker

S-AIS - Synthetic AIS  
V-AIS - Virtual AIS  
VTS - Vessel Traffic Service  
WSDOT - Washington State Department of Transportation

---

**SECTION I - SPECIAL NOTICES**

This section contains information of special concern to the Mariner.

---

**NORTH PACIFIC OCEAN – Space craft re-entry hazard zone**

Hazardous operations will be conducted with a possible satellite reentry off the west coast of the United States with the primary reentry and splashdown day of the service module from 2018 – 2119 UTC on 15 Jun 2024, and a backup reentry from 1911 – 2012 UTC on 19 Jun 2024. The hazardous operation area is bounded by the following coordinates:

49-12 N / 132-49 W  
47-00 N / 134-15 W  
50-41 N / 170-48 W  
52-03 N / 170-59 W  
53-10 N / 166-40 W

For additional information, please contact Matt Dulski at (281) 483-9112, Matthew.B.Dulski@nasa.gov, Ashley Tarpley at (346) 578-2369, Ashley.FW.Tarpley@nasa.gov.

Chart 530

LNM: 23/24

**COLUMBIA RIVER – VANCOUVER TO BONNEVILLE – Bridge inspection work**

Advanced American Construction & ODOT will be performing bridge inspection on the Interstate 5 Bridge located at Columbia River RM 106.5. Work includes inspection by aerial lifts mounted on barges. The vessel "McCarver" will be on station from 10 – 14 Jun 2024 with working hours 0700 – 1700. The vessels will be moved off station during non-working hours. Onsite vessels will monitor VHF-FM channels 13 & 16 during working hours. Mariners are requested to reduce speed and avoid the work barges. When requested, the inspection barge will give way to marine traffic for safe passage through the bridge. Thirty-minute advanced notice is requested for barge movements. Please call Paul Spring at (503) 949-2148 or Paul.SPRING@odot.oregon.gov for more information.

Chart 18526

LNM: 23/24

**WASHINGTON – GRAYS HARBOR – ABERDEEN – WHISKAH RIVER – Bridge notice**

The Coast Guard has approved a temporary deviation to the operating regulations for the Whiskah Street Bridge (LLNR 16072.3) across the Whiskah River at mile 0.4 in Aberdeen, WA. This deviation is needed due to a roadway accident damaging the traffic control barrier. Mariners that require an opening of the Whiskah Street Bridge shall give notice at least two hours prior to arriving at the subject bridge. Vessels that do not require a draw opening may navigate under the subject bridge at any time. For more information contact David Reibel at david.reibel@wsdot.wa.gov or (360) 538-8530.

Chart 18502

LNM: 23/24

**WASHINGTON – PUGET SOUND – HOOD CANAL – Bridge deviation**

The Coast Guard intends to approve a temporary deviation closure of the Hood Canal Highway Bridge draw (LLNR 17769) from 0600 on 05 Aug through 2359 on 09 Aug 2024. The Hood Canal Bridge crosses Hood Canal at waterway mile 5.0 near Port Gamble, WA. Once repairs begin, the draw of the subject bridge cannot be opened for navigation until the repairs have been completed. The east and west spans are fixed spans and will be available for marine vessel use, but the vertical clearances are limited. Please review the chart for vertical clearance information. The Coast Guard is requesting comments/objections for this closure and/or dates; please send all comments or objections to d13-smb-d13-bridges@uscg.mil by 20 Jun 2024.

Chart 18441

LNM: 23/24

**WASHINGTON – HARO STRAIT AND BOUNDARY PASS – ECHO Program 2024 Voluntary Ship Slowdown**

Effective 01 Jun 2024, the Enhancing Cetacean Habitat and Observation (ECHO) Program voluntary ship slowdown through Haro Strait and Boundary Pass is in effect for all inbound and outbound commercial and government vessels. If it is safe and operationally feasible to do so, commercial and government vessels are requested to not exceed the following speeds through the water:

- 11 knots – Bulkers, tankers, general cargo vessels, and government vessels; and,
- 14.5 knots – Vehicle carriers, cruise ships, and container vessels.

This voluntary slowdown takes place between 48-24-22.78 N, 123-12-15.26 W, and 48-46-39.28 N 123-01-36.84 W. Speed transition zones are in place within the established traffic system at both approaches to the slowdown area. The north transition zone are those waters between north of Boat Pass, Saturna Island and Rosenfeld Rock and the south transition zone are those waters between buoy VH at the Victoria pilot station, and Sea Bird Point at the southeast corner of Discovery Island. There are also two optional slow down areas, one rounding turn point and the other between Turn Point, Saturna Island and Alden Point, Patos Island. The ECHO Program ship slowdown in Haro Strait and Boundary Pass aims to reduce underwater noise in known southern resident killer whale feeding areas. This initiative will remain in effect 24 hours per day until 2359 Pacific on 30 Nov 2024, depending on whale presence in the area. The voluntary slowdowns at Swiftsure Bank and in Haro Strait and Boundary Pass are led by the Vancouver Fraser Port Authority's ECHO (Enhancing Cetacean Habitat and Observation) program, in cooperation with government agencies, Indigenous communities, industry partners and environmental groups. For more detailed information related to this slowdown and the ECHO program, refer to the following internet web address: <https://www.portvancouver.com/environmental-protection-at-the-port-of-vancouver/maintaining-healthy-ecosystems-throughout-our-jurisdiction/echo-program/projects/haro-slowdown/>

LNM: 23/24

**WASHINGTON – STRAIT OF JUAN DE FUCA TO STRAIT OF GEORGIA – SWINOMISH CHANNEL NORTH ENTRANCE – Shoaling**

Mariners are advised that significant shoaling exists in Swinomish Channel, especially the North Entrance between Swinomish Channel North Entrance Buoy 30 (LLNR 19155) and the Burlington Northern Santa Fe Railroad Bridge 7.6 (LLNR 19155.1). While the project depth of Swinomish Channel is 12 feet, the controlling depth of Swinomish Channel is 5.9 feet based upon the latest available hydrographic data (a survey dated March of 2024.) This controlling depth of 5.9 feet / 1.8 meters is reflected on NOAA ENC products. Raster products do not reflect this sounding information, as they are no longer being updated with most routine corrections. Mariners should consult ENC cells for the most up-to-date information. Mariners should transit the Swinomish Channel waterway with caution, especially at low tidal conditions. To view the survey data, visit the following link: [https://ehydroprod.blob.core.usgovcloudapi.net/ehydro-surveys-pdf/CENWS/CENWS\\_DIS\\_SW\\_01\\_SWC\\_20240305\\_CS\\_E\\_6\\_3\\_353.PDF](https://ehydroprod.blob.core.usgovcloudapi.net/ehydro-surveys-pdf/CENWS/CENWS_DIS_SW_01_SWC_20240305_CS_E_6_3_353.PDF)

Chart 18427

LNM: 23/24

**OREGON – CAPE BLANCO TO YAQUINA HEAD – PacWave South Submarine Cable Operations**

R.T. Casey will be performing submarine cable installation and burial operations as part of the PacWave Wave Energy project off the Oregon coast in the vicinity of Driftwood Beach State Recreation Site near Seal Rock, Oregon, and out to 13 miles offshore. Operations are scheduled from 20 Jun – 15 Oct 2024, and will take place in the PacWave Sough site centered on approximate position 44-30-42 N, 124-10-30 W. Operations will be conducted 24 hours a day, 7 days a week, and staged from the following platforms: HOS Innovator, M/V Liberty, and OSV Nautilus, all of which can be reached on VHF-FM Channels 13 & 16. Mariners are requested to contact the above listed vessel and maintain a minimum 500-yard distance when transiting in the vicinity. For additional information contact Zachary Casey at (504) 491-2288.

Chart 18580

LNM: 22/24

**OREGON – TILLAMOOK BAY – Tillamook South Jetty repairs**

Trade West Construction has begun moving material to a material offloading facility for use on the Tillamook Bay South Jetty repairs. Jetty stone will be transported from the Port of Garibaldi, approximate location 45-33-14 N, 123-54-54 W, to Kincheloe Point on the Bay Ocean Peninsula in approximate location 45-33-07 N, 123-56-09 W. The tugboat and support vessel involved in this operation will monitor VHF-FM channels 8 and 10. Mariners are strongly advised to keep a safe distance from the tug and barge operations and the repair work. For more information, contact Garret Bryner at (435) 406-4111 or email [garretbtw@gmail.com](mailto:garretbtw@gmail.com).

Chart 18558

LNM: 22/24

**WASHINGTON – STRAIT OF JUAN DE FUCA – SWIFTSURE BANK – ECHO Program 2024 Voluntary Ship Slowdown**

Effective 01 Jun 2024, the Enhancing Cetacean Habitat and Observation (ECHO) Program voluntary ship slowdown in the vicinity of Swiftsure Bank is in effect for all inbound and outbound commercial and government vessels. If it is safe and operationally feasible to do so, commercial and government vessels are requested to not exceed the following speeds through the water:

- 11 knots – Bulkers, tankers, general cargo vessels, and government vessels; and,
- 14.5 knots – Vehicle carriers, cruise ships, and container vessels.

The voluntary ship slowdown takes place in the inbound and outbound lanes of the vessel traffic separation scheme between the start or end of the traffic separation scheme on the western or southern side, and the 124-40-00 W longitudinal line (radio call in point 1) on the eastern side. Speed transition zones are in place about 5 nautical miles prior to entering the slowdown area. The ECHO Program ship slowdown at Swiftsure Bank aims to reduce underwater noise in known southern resident killer whale feeding areas. This initiative will remain in effect 24 hours per day until 2359 PDT on 31 Oct 2024. The voluntary slowdowns at Swiftsure Bank and in Haro Strait and Boundary Pass are led by the Vancouver Fraser Port Authority's ECHO (Enhancing Cetacean Habitat and Observation) program, in cooperation with government agencies, Indigenous communities, industry partners and environmental groups. For more detailed information related to this slowdown and the ECHO program, refer to the following internet address: <https://www.portvancouver.com/environmental-protection-at-the-port-of-vancouver/maintaining-healthy-ecosystems-throughout-our-jurisdiction/echo-program/projects/swiftsure-bank-slowdown/>.

Chart 18460

LNM: 22/24

**WASHINGTON – STRAIT OF JUAN DE FUCA – ECHO Program 2024 Voluntary Tug Lateral Displacement**

As of 01 Jun 2024, the Enhancing Cetacean Habitat and Observation (ECHO) Program voluntary inshore lateral displacement is in effect for all tugs transiting the Canadian inshore area of the Strait of Juan de Fuca. If it is safe and operationally feasible to do so, tugs are requested to move south of the known killer whale feeding area and navigate either through the outbound shipping lane or the inshore lateral displacement zone, while maintaining a buffer distance of 1,000 meters from the traffic separation scheme (TSS). The inshore lateral displacement zone is 1,500 meters wide and occurs in the area between 123-52-21.192 W, 48-18-37.332 N and 124-31-33.378 W, 48-28-53.316 N, covering a distance of approximately 28 NM. The ECHO Program voluntary lateral displacement initiative aims to reduce underwater noise in known southern resident killer whale feeding areas along the northern edge of the Strait of Juan de Fuca. This initiative will remain in effect 24 hours a day through 31 Oct 2024. For more detailed information related to lateral displacement and the ECHO program, visit the following internet address: <https://www.portvancouver.com/environmental-protection-at-the-port-of-vancouver/maintaining-healthy-ecosystems-throughout-our-jurisdiction/echo-program/projects/lateraldisplacement/>.

Charts: 18400 18460

LNM: 22/24

**WASHINGTON – STRAIT OF JUAN DE FUCA TO STRAIT OF GEORGIA – BELLINGHAM BAY – Scientific research activities**

The Washington State Department of Ecology's (DOE) Puget Sound Ecosystem Monitoring Program (PSEMP) Sediment Monitoring Component will conduct annual sediment and benthic invertebrate sampling from 10 – 14 Jun 2024 throughout Bellingham Bay aboard the R/V Salish SeaCat, a 32 ft gray and blue research vessel which can be hailed on VHF-FM channels 13 and 16. The PSEMP project goal is to provide easily accessed, high-quality data and information to assist the Puget Sound Partnership, managers, tribes, and others in evaluating the overall condition of Puget Sound sediments. As well as to document change in benthic condition over time in response to inputs of carbon, nutrients, and chemicals to the system, and in response to climate-related pressures. From the project's webpage, you may download and view Puget Sound sediment data, Quality Assurance Project Plans, story maps and publications at <https://ecology.wa.gov/Water-Shorelines/Puget-Sound/Sound-science/Marine-sediments>. If you have any questions or concerns about this work, please contact Sandra Weakland at (360) 688-6420 or email [sgei461@ecy.wa.gov](mailto:sgei461@ecy.wa.gov).

Charts: 18421 18424

LNM: 22/24

**WASHINGTON – PUGET SOUND – SEATTLE TO BREMERTON – ELLIOT BAY – Tribal Fisheries**

The Muckleshoot Tribe will conduct gillnet fishing operations for summer steelhead in catch area 10A (Elliott Bay east of a line drawn from Pier 91 to Duwamish Head Light (LLNR 16910)), and catch area 80B (the Duwamish River), from 0600 on 31 May 2024 until further notice. These fisheries may cause significant congestion on the waterway, and mariners are advised to use caution while transiting the area. For more information, contact Coast Guard Sector Puget Sound Waterways at (206) 217-6051 or the Muckleshoot Tribal Enforcement at (253) 876-2927.

Chart 18450

LNM: 22/24

**WASHINGTON – APPROACHES TO STRAIT OF JUAN DE FUCA – Olympic Coast National Marine Sanctuary research buoys**

Olympic Coast National Marine Sanctuary will be conducting oceanographic research between Makah Bay and Cape Elizabeth from 15 May until 01 Oct 2024. The R/V Storm Petrel has deployed 10 moorings and identified one un-recoverable mooring at the locations listed below. On these moorings, surface gear consists of a 12-inch low-drag surface float (Polyform LD-2) with three trailing yellow seine net floats, and an 8-meter-long Amsteel line attached to sub-surface gear. The unrecoverable mooring CE015 does have a surface expression, which consists of a buoy and partial halibut pole. The halibut pole is only visible in negative tides and does not have a radar reflector. Olympic Coast will be making an attempt to recover mooring CE015 in July 2024. For additional information, please contact the Vessel Operations Coordinator, LTJG Haley Wilson, at (360) 406-2085.

Site	Latitude	Longitude
MB015	48-19-31.380N	124-40-36.600W
MB042	48-19-26.280N	124-44-07.380W
CA015	48-09-58.680N	124-45-24.600W
CA042	48-09-57.660N	124-49-24.120W
TH015	47-52-34.020N	124-37-10.080W
TH042	47-52-34.140N	124-44-00.300W
KL015	47-36-03.000N	124-25-42.240W
KL027	47-35-40.440N	124-29-49.440W
CE015	47-21-24.420N	124-20-53.280W
CE042	47-21-11.280N	124-29-19.440W
UNRECOVERABLE		
CE015	47-21-24.420N	124-20-53.280W

For more information, contact Lieutenant Junior Grade Haley Wilson at (252) 529-7898 or via email at [haley.wilson@noaa.gov](mailto:haley.wilson@noaa.gov).

Chart 18480

LNM: 21/24

**WASHINGTON – PUGET SOUND – HOOD CANAL – Small boat operations**

Naval Base Kitsap will be conducting Force Protection exercises on 11 Jun 2024 from 0700 – 1500, on the waterfront adjacent to Naval Base Kitsap-Bangor in the Hood Canal, and will occur in an area bound by the following positions:

- 1) 47-44-28N / 122-45-51W
- 2) 47-44-20N / 122-44-32W
- 3) 47-43-55N / 122-45-16W
- 4) 47-43-47N / 122-44-56W

Mariners are requested to remain at least 500 yards away from the area outlined, as well as the grey-hull Navy Security vessels conducting the exercises. Navy Security vessels will be operating at high speeds and utilizing blank ammunition during firing exercises. The Navy Security vessels can be reached on VHF-FM 72, 88A, and 16. For more information, on the exercise, please contact Mark Durben, Antiterrorism Officer, Naval Base

Kitsap at (360) 396-9275, or email mark.e.durben.civ@us.navy.mil.  
Chart 18441

LNM: 21/24

**WASHINGTON – PUGET SOUND – SEATTLE TO BREMERTON – ELLIOTT BAY – Marine construction (Revised from LNM 37/22)**

Pacific Pile & Marine’s ongoing marine construction project for the City of Seattle at Pier 58 will be continuing until 31 Dec 2024. The in-water work includes timber pier demolition and pile removal, new piling placement, new concrete construction, habitat improvements and cathodic protection systems. There will also be some demolition work conducted just north of pier 62 near the entrance to Bell Harbor Marina. Work hours are typically 0700 – 1900 daily. Pacific Pile will have multiple assets on scene including multiple barges and cranes. Crews will use VHF-FM channels 18 / 19 for communications with assist tugs and 68 / 69 for mariners with any questions. For more information, contact Andrea Harwood at (206) 817-5624, or email at andrea@pacificpile.com.

Chart 18450

LNM: 21/24

**WASHINGTON – EVERETT HARBOR– SNOHOMISH RIVER – SR 529 Twin Highway Bridge Notice (revised from LNM 13/24)**

The Coast Guard has changed a previously approved temporary bridge deviation from the operating schedule that governs the SR 529 Twin Highway Bridges both northbound and southbound, across the Snohomish River. This revised deviation supports needed bridge repairs. SR 529 Highway Bridge (NB) (LLNR 18591.3) crosses the Snohomish River, mile 3.6, at Everett, WA, and is authorized to lock open the draw at 15 feet and install 5 feet of containment under the bridge. The vertical clearance of the open draw with containment will be 48 feet at high tide. Mariners must give a two-hour notice to open the SR 529 Bridge (SB) (LLNR 18591.2). This deviation will be from 0600 on 02 Jun until 2359 on 28 Nov 2024. Working hours may vary, but the planned hours will be 10 to 12 hours per day. Expect work to be during the daytime but can be extended to nighttime work. Fall hazards may be present during working hours. Mariners may transit under the subject bridges at any time. An alternate route for vessels to use during this deviation period is via Union Slough. For more information on this event contact Rich Strickling at (330) 207-2100, or rs@libertymaintenanceinc.com. Information may also be via Jeff Franklin at (330) 261-3609, or jfranklin@libertymaintenanceinc.com.

Chart 18444

LNM: 21/24

**COLUMBIA RIVER – CRIMS ISLAND TO SAINT HELENS – LONGVIEW – Potential Federal Channel change at Lewis and Clark Highway Bridge**

USACE is evaluating a request from the Columbia River Pilots to change the alignment of the Columbia River Federal Navigation Channel (FNC) between RM 65 to RM 67 to improve navigational safety by increasing distances between the FNC and the north pier of the Lewis and Clark Highway Bridge (LLNR 10812.5) and the U.S. Gypsum dock. The existing Cottonwood Island Lower Range would be extended from 68+40 downstream to the Lewis and Clark Highway Bridge at RM 66+00 and then the channel would turn to reconnect to the existing centerline downstream near RM 65+09. A graphical depiction of the potential change is included as Enclosure (4) to this LNM. The existing Longview Designated Anchorage would be revised to remove the portion that overlaps with the realigned channel. Mariners are encouraged to share comments on the potential FNC realignment. A ship simulation will be used to validate the change prior to a final decision. Please direct your comments to USACE Project Manager Jessica Stokke by 01 Jul 2024 at (503) 808-4352 or Jessica.B.Stokke@usace.army.mil.

Chart 18524

LNM: 20/24

**COLUMBIA RIVER AND SNAKE RIVER – 2024 summer lockage schedule for recreational vessels**

As of 13 May 2024, the USACE Portland and Walla Walla Districts have implemented the 2024 summer lockage schedule for the passage of recreational vessels through the following navigation locks:

Lock Name	Location	Phone Number	Radio Call Sign (VHF-FM channel 14)
<b>Portland District:</b>			
Bonneville Lock	Columbia River Mile 145.5	(541) 374-8323	WUJ 33
The Dalles Lock	Columbia River Mile 191.5	(541) 506-8211	WUJ 34
John Day Lock	Columbia River Mile 215.6	(541) 739-1050	WUJ 35
<b>Walla Walla District:</b>			
McNary Lock	Columbia River Mile 292	(541) 922-2231	WUJ 41
Ice Harbor Lock	Snake River Mile 9.7	(509) 543-3231	WUJ 42
Lower Monumental Lock	Snake River Mile 41.6	(509) 282-7231	WUJ 43
Little Goose Lock	Snake River Mile 70.3	(509) 404-2231	WUJ 44
Lower Granite Lock	Snake River Mile 107.5	(509) 843-2231	WUJ 45

The following annual recreational craft lockage schedules will be implemented for all the locks beginning 13 May through 13 Sep 2024:

Upstream Direction Times: 0900, 1200, 1500, 1800, 2100  
Downstream Direction Times: 0930, 1230, 1530, 1830, 2130

When a recreational vessel lockage schedule is in effect, recreational vessels will only be allowed to lock through at the times designated for such lockages and they will take precedence over commercial vessels. Commercial vessels will continue to be locked through upon arrival except during the times specified for recreational vessel lockages. At the discretion of the lock operator, recreational vessels may be allowed to lock through with commercial craft. USACE will consider special lockages, outside the above scheduled lockage times, for flotillas or other unique activities sponsored by yacht clubs, marinas, and other groups, provided advance (at least 24-hours) arrangements have been made with the appropriate control room operator. A personal flotation device is required for every member on board the recreational vessel and shall be worn throughout the duration of the lockage. All vessel owner/operators lock through at their own risk and must follow the directions of the lock operator when using the locks or operating in the vicinity of the locks. The lock operator has final authority on the suitability of a craft for lockage. Information on the locks, including how to safely lock a recreational vessel is available at <https://www.nww.usace.army.mil/Missions/Navigation>. For more information on this matter please call the Walla Walla Operations Division, at telephone (509) 527-7364.

Charts: 18532 18535 18541 18546 18547 18548

LNM: 20/24

**OREGON – WASHINGTON – IDAHO – NOAA’s ongoing cancellation of Paper and Raster nautical charts (Revised from LNM 10/21)**

The National Oceanic and Atmospheric Administration (NOAA) is in the middle of a multi-year program to end production and maintenance of its suite of over 1,000 traditional paper nautical charts and all associated raster chart products and services, including: Print-on-Demand (POD) paper nautical charts, Full-size chart PDF files, BookletChart™ PDF files, NOAA raster navigational charts (NOAA RNC®), the NOAA RNC tile service, and the online RNC viewer.

Six months prior to cancellation, a notice of the intent to cancel a specific chart will be provided via a “Last Edition” notice. The final cancellation of a chart will be made via a “Canceled” notice. Both types of notices will appear in LNM Section IV, “Chart Correction.” A comprehensive list of all cancelled NOAA charts is available at: <http://www.charts.noaa.gov/MCD/Dole.shtml>.

Traditional paper nautical chart production is ending to enable the creation and maintenance of larger scale, more up-to-date, higher quality coverage of NOAA’s electronic navigational chart (NOAA ENC®) product. This will significantly enhance the amount of charted detail available to mariners. More information about NOAA’s program to sunset traditional paper charts is on the NOAA Coast Survey website at: <https://nauticalcharts.noaa.gov/charts/farewell-to-traditional-nautical-charts.html>. An online NOAA Custom Chart application at: <https://devgis.charttools.noaa.gov/pod> is available to create chart images from ENC data, which may then be printed. Notices to Mariners will not be issued for NOAA Custom Charts.

Mariners are warned that even prior to traditional chart production ending, users may notice differences between paper charts and ENCs. There are two broad categories of data that are applied onto NOAA ENCs and paper / raster nautical charts – "Critical Corrections" and "Routine" data. Critical Corrections may be newly discovered shoals or other dangers to navigation, as well as changes in the positions or characteristics of aids to navigation (buoys, beacons, and lights). These are typically changes that are published by the Coast Guard in the weekly LNM. Critical corrections are applied to ENCs first, then applied to paper and raster nautical charts. These changes generally appear on both product types (raster and ENC) within a week of each other. However, new Routine source data are now ONLY applied to NOAA ENCs and not to traditional paper / raster nautical charts. Routine data includes the results of ordinary hydrographic and shoreline surveys, which could be extensive. Any specific dangers revealed during routine surveys are extracted from the data and classified as Critical Corrections to be applied to all products. For more information visit NOAA’s website: <https://nauticalcharts.noaa.gov/charts/farewell-to-traditional-nautical-charts.html>.

LNM: 06/24

---



---

**SECTION II - DISCREPANCIES**

This section lists all reported and corrected discrepancies related to Aids to Navigation in this edition. A discrepancy is a change in the status of an aid to navigation that differs from what is published or charted.

---

**DISCREPANCIES (FEDERAL AIDS)**

LLNR	Aid Name	Status	Chart No.	BNM Ref.	LNM St	LNM End
580	Port Orford Entrance Lighted Buoy 1	LT EXT	18600	0121-24	07/24	
595	Cape Blanco Light	LT IMCH/REDUCED INT	18580	0086-23	52/23	
645	Yaquina Bay Approach Lighted Whistle Buoy Y	AIS INOP	18581		22/24	
689	NOAA Environmental Lighted Buoy 46089	MISSING	18003	0854-23	49/23	
765.1	NOAA Environmental Lighted Buoy 46002	ADRIFT	18007	0668-23	39/23	
765.2	DART Tsunami Warning Lighted Buoy 46407	MISSING	18007	0777-23	45/23	
8735	Coos Bay Entrance Lighted Bell Buoy 1	SINKING	18587	0262-24	14/24	
<b>8831</b>	<b>Coos Bay Channel Lighted Buoy 10A</b>	<b>OFF STA</b>	<b>18587</b>	<b>0399-24</b>	<b>23/24</b>	
<b>8955</b>	<b>Coos Bay Channel Lighted Buoy 23</b>	<b>OFF STA</b>	<b>18587</b>	<b>0400-24</b>	<b>23/24</b>	
9346	Leeds Island Range Front Light	LT EXT	18584	0851-23	49/23	
9575	Yaquina Bay Approach Lighted Whistle Buoy Y	AIS INOP	18581		22/24	
9590	Yaquina Bay Entrance Lighted Gong Buoy 1	AIS INOP	18581	0379-24	22/24	
9595	Yaquina Bay Entrance V-AIS 2	AIS INOP	18581	0379-24	22/24	
9600	Yaquina Bay Entrance Lighted Buoy 3	AIS INOP	18581	0379-24	22/24	
9605	Yaquina Bay South Jetty Light 4	AIS INOP	18581	0379-24	22/24	
9608	Yaquina Bay North Jetty V-AIS 5	AIS INOP	18581	0379-24	22/24	
10215	Miller Sands Dike Light 5	DAYMK IMCH	18521	0022-22	02/22	

10475	Westport Dike Light 58	LT EXT/STRUCT DMGD	18523	0190-22	09/22
11455	Camas Slough Range Front Light	LT EXT/STRUCT DMGD	18531	0769-22	42/22
11530	Washougal Lower Range Front Light	LT EXT	18531	0369-24	21/24
12230	Lake Celilo Daybeacon 27	STRUCT DMGD	18533	0125-23	05/23
14420	Baker Bay West Channel Entrance Jetty Light 2	LT IMCH/STRUCT DMGD	18521	0633-21	38/21
14990	Stevens Point Buoy 5	OFF STA	18526	0071-24	05/24
15635	Grays Harbor South Reach Light 16	DAYMK MISSING/STRUCT DMGD	18502	0330-23	19/23
15940	Damon Point Light	DAYMK MISSING/STRUCT DMGD	18502	0587-23	35/23
16540	Puget Sound Traffic Separation Lane Lighted Buoy SE	OFF STA	18473	0322-24	18/24
17595	Kilisut Harbor Buoy 2	MISSING	18464	0126-23	05/23
<b>19005</b>	<b>Cap Sante Waterway Daybeacon 4</b>	<b>STRUCT DMGD</b>	<b>18427</b>	<b>0406-24</b>	<b>23/24</b>
19290	Inati Bay Reef Buoy	MISSING	18424	0573-23	34/23
19325	Davidson Rock Light 1	DAYMK MISSING	18421	0277-23	16/23
19480	Cypress Reef Junction Daybeacon C	DAYMK MISSING	18424	0512-22	29/22
19550	Twin Rocks Daybeacon	STRUCT DMGD	18421	0037-24	03/24
<b>19575</b>	<b>Fisherman Bay Channel Buoy 7</b>	<b>OFF STA</b>	<b>18421</b>	<b>0407-24</b>	<b>23/24</b>
19724	Mosquito Pass Buoy 1	OFF STA	18421	0373-24	21/24

**DISCREPANCIES (FEDERAL AIDS) CORRECTED**

LLNR	Aid Name	Status	Chart No.	BNM Ref.	LNM St	LNM End
11535	Washougal Lower Range Rear Light	RELIGHTED	18531	None	23/24	23/24
15585	Point Chehalis Range Front Light	RELIGHTED	18502	0401-24	22/24	23/24

**DISCREPANCIES (PRIVATE AIDS)**

LLNR	Aid Name	Status	Chart No.	BNM Ref.	LNM St	LNM End
<b>16720</b>	<b>Edmonds Fishing Reef Buoys (2)</b>	<b>MISSING</b>	<b>18446</b>	<b>0403-24</b>	<b>23/24</b>	

**DISCREPANCIES (PRIVATE AIDS) CORRECTED**

LLNR	Aid Name	Status	Chart No.	BNM Ref.	LNM St	LNM End
------	----------	--------	-----------	----------	--------	---------

None

**PLATFORM DISCREPANCIES**

Name	Status	Position	BNM Ref.	LNM St	LNM End
------	--------	----------	----------	--------	---------

None

**PLATFORM DISCREPANCIES CORRECTED**

Name	Status	Position	BNM Ref.	LNM St	LNM End
------	--------	----------	----------	--------	---------

None

**SECTION III - TEMPORARY CHANGES and TEMPORARY CHANGES CORRECTED**

This section contains temporary changes and corrections to Aids to Navigation for this edition. When charted aids are temporarily relocated for dredging, testing, evaluation, or marking an obstruction, a temporary correction shall be listed in Section IV giving the new position.

**TEMPORARY CHANGES**

LLNR	Aid Name	Status	Chart No.	BNM Ref.	LNM St	LNM End
17535	Point Hudson Marina Light	DISCONTINUED	18464	0660-23	39/23	
17977	Liberty Bay Marina No Wake Lighted Buoy	DISCONTINUED	18446	0320-24	18/24	
19485	Buckeye Shoal Lighted Bell Buoy 14	TRUB	18424	0310-24	18/24	

TEMPORARY CHANGES CORRECTED

LLNR	Aid Name	Status	Chart No.	BNM Ref.	LNM St	LNM End
------	----------	--------	-----------	----------	--------	---------

None

PLATFORM TEMPORARY CHANGES

Name	Status	Position	BNM Ref.	LNM St	LNM End
------	--------	----------	----------	--------	---------

None

PLATFORM TEMPORARY CHANGES CORRECTED

Name	Status	Position	BNM Ref.	LNM St	LNM End
------	--------	----------	----------	--------	---------

None

SECTION IV - CHART CORRECTIONS

This section contains corrections to federally and privately maintained Aids to Navigation, as well as NOS corrections.

This section contains corrective actions affecting chart(s). Corrections appear numerically by chart number, and pertain to that chart only. It is up to the mariner to decide which chart(s) are to be corrected. The following example explains individual elements of a typical chart correction.

Chart Number	Chart Edition	Edition Date	Last Local Notice to Mariners	Horizontal Datum Reference	Source of Correction	Current Local Notice to Mariners
12327	91st Ed.	19-APR-97	Last LNM: 26/97	NAD 83		27/97
Chart Title: NY-NJ-NEW YORK HARBOR - RARITAN RIVER						
Main Panel 2245 NEW YORK HARBOR						
(Temp) ADD	NATIONAL DOCK CHANNEL BUOY 3				CGD01	074-02-48.001W
Corrective Action	Green can	Object of Corrective Action			Position	

(Temp) indicates that the chart correction action is temporary in nature. Courses and bearings are given in degrees clockwise from 000 true. Bearings of light sectors are toward the light from seaward. The nominal range of lights is expressed in nautical miles (NM) unless otherwise noted.

**50** 9th Ed. 01-DEC-15 Last LNM: 34/22 NAD 83 23/24

Chart Title: North Pacific Ocean (eastern part) Bering Sea Continuation

Main Panel 2400 NORTH PACIFIC OCEAN EASTERN PART. Page/Side: A

LAST EDITION No new editions of chart 50 will be published. It will be canceled on 04-Sep-24. Comparable or larger scale Electronic Navigational Chart (ENC) coverage is available. See "Cancellation of NOAA Paper and Raster Nautical Charts" in Section I of this LNM for details. A list of all canceled NOAA charts is at <https://www.charts.noaa.gov/MCD/Dole.shtml>.

NOS

--

--

**501** 13th Ed. 01-JUN-09 Last LNM: 31/22 NAD 83 23/24

Chart Title: North Pacific Ocean West Coast Of North America Mexican Border To Dixon Entrance

Main Panel 1650 MEXICAN BORDER TO DIXON ENTRANCE. Page/Side: N/A

LAST EDITION No new editions of chart 501 will be published. It will be canceled on 04-Sep-24. Comparable or larger scale Electronic Navigational Chart (ENC) coverage is available. See "Cancellation of NOAA Paper and Raster Nautical Charts" in Section I of this LNM for details. A list of all canceled NOAA charts is at <https://www.charts.noaa.gov/MCD/Dole.shtml>.

NOS

--

--

**530** 35th Ed. 01-DEC-15 Last LNM: 34/22 NAD 83 23/24

Chart Title: North America West Coast San Diego to Aleutian Islands and Hawaiian Islands

Main Panel 2405 SAN DIEGO TO ALEUTIAN ISLANDS AND HAWAIIAN ISLANDS. Page/Side: A

LAST EDITION No new editions of chart 530 will be published. It will be canceled on 04-Sep-24. Comparable or larger scale Electronic Navigational Chart (ENC) coverage is available. See "Cancellation of NOAA Paper and Raster Nautical Charts" in Section I of this LNM for details. A list of all canceled NOAA charts is at <https://www.charts.noaa.gov/MCD/Dole.shtml>.

NOS

--

--

**18003** 20th Ed. 01-NOV-06 Last LNM: 23/21 NAD 83 23/24

Chart Title: Cape Blanco to Cape Flattery



**Main Panel 1651 CAPE BLANCO TO CAPE FLATTERY. Page/Side: N/A**

LAST EDITION No new editions of chart 18003 will be published. It will be canceled on 02-Oct-24. Comparable or larger scale Electronic Navigational Chart (ENC) coverage is available. See "Cancellation of NOAA Paper and Raster Nautical Charts" in Section I of this LNM for details. A list of all canceled NOAA charts is at <https://www.charts.noaa.gov/MCD/Dole.shtml>. NOS -- --

**18007 33rd Ed. 01-FEB-09 Last LNM: 23/21 NAD 83 23/24**  
*ChartTitle: San Francisco to Cape Flattery*

**Main Panel 1652 SAN FRANCISCO TO CAPE FLATTERY. Page/Side: N/A**

LAST EDITION No new editions of chart 18007 will be published. It will be canceled on 02-Oct-24. Comparable or larger scale Electronic Navigational Chart (ENC) coverage is available. See "Cancellation of NOAA Paper and Raster Nautical Charts" in Section I of this LNM for details. A list of all canceled NOAA charts is at <https://www.charts.noaa.gov/MCD/Dole.shtml>. NOS -- --

**18010 22nd Ed. 01-SEP-12 Last LNM: 29/20 NAD 83 23/24**  
*ChartTitle: Monterey Bay to Coos Bay*

**Main Panel 1653 MONTEREY BAY TO COOS BAY. Page/Side: N/A**

LAST EDITION No new editions of chart 18010 will be published. It will be canceled on 02-Oct-24. Comparable or larger scale Electronic Navigational Chart (ENC) coverage is available. See "Cancellation of NOAA Paper and Raster Nautical Charts" in Section I of this LNM for details. A list of all canceled NOAA charts is at <https://www.charts.noaa.gov/MCD/Dole.shtml>. NOS -- --

**18421 53rd Ed. 01-MAR-19 Last LNM: 04/19 NAD 83 23/24**  
*ChartTitle: Strait of Juan de Fuca to Strait of Georgia;Drayton Harbor*

**Main Panel 1657 STRAIT OF JUAN DE FUCA TO STRAIT OF GEORGIA - -. Page/Side: -**

LAST EDITION No new editions of chart 18421 will be published. It will be canceled on 05-Jun-24. Comparable or larger scale Electronic Navigational Chart (ENC) coverage is available. See "Cancellation of NOAA Paper and Raster Nautical Charts" in Section I of this LNM for details. A list of all canceled NOAA charts is at <https://www.charts.noaa.gov/MCD/Dole.shtml>. NOS -- --

**18424 28th Ed. 01-FEB-11 Last LNM: 39/17 NAD 83 23/24**  
*ChartTitle: Bellingham Bay;Bellingham Harbor*

**Main Panel 1677 BELLINGHAM BAY. Page/Side: N/A**

LAST EDITION No new editions of chart 18424 will be published. It will be canceled on 05-Jun-24. Comparable or larger scale Electronic Navigational Chart (ENC) coverage is available. See "Cancellation of NOAA Paper and Raster Nautical Charts" in Section I of this LNM for details. A list of all canceled NOAA charts is at <https://www.charts.noaa.gov/MCD/Dole.shtml>. NOS -- --

**18427 25th Ed. 01-OCT-19 Last LNM: 04/19 NAD 83 23/24**  
*ChartTitle: Anacortes to Skagit Bay*

**Main Panel 1680 ANACORTES TO SKAGIT BAY - -. Page/Side: -**

LAST EDITION No new editions of chart 18427 will be published. It will be canceled on 05-Jun-24. Comparable or larger scale Electronic Navigational Chart (ENC) coverage is available. See "Cancellation of NOAA Paper and Raster Nautical Charts" in Section I of this LNM for details. A list of all canceled NOAA charts is at <https://www.charts.noaa.gov/MCD/Dole.shtml>. NOS -- --

**18428 10th Ed. 01-OCT-10 Last LNM: 38/16 NAD 83 23/24**  
*ChartTitle: Oak and Crescent Harbors*

**Main Panel 1681 OAK AND CRESCENT HARBORS. Page/Side: N/A**

LAST EDITION No new editions of chart 18428 will be published. It will be canceled on 05-Jun-24. Comparable or larger scale Electronic Navigational Chart (ENC) coverage is available. See "Cancellation of NOAA Paper and Raster Nautical Charts" in Section I of this LNM for details. A list of all canceled NOAA charts is at <https://www.charts.noaa.gov/MCD/Dole.shtml>. NOS -- --

**18431 9th Ed. 01-MAY-14 Last LNM: 47/16 NAD 83 23/24**  
*ChartTitle: Rosario Strait to Cherry Point*

**Main Panel 1684 ROSARIO STRAIT TO CHERRY POINT. Page/Side: N/A**

NOS

LAST EDITION	No new editions of chart 18431 will be published. It will be canceled on 05-Jun-24. Comparable or larger scale Electronic Navigational Chart (ENC) coverage is available. See "Cancellation of NOAA Paper and Raster Nautical Charts" in Section I of this LNM for details. A list of all canceled NOAA charts is at <a href="https://www.charts.noaa.gov/MCD/Dole.shtml">https://www.charts.noaa.gov/MCD/Dole.shtml</a> .	--	--
<b>18440</b>	<b>31st Ed. 01-APR-17 Last LNM: 42/19 NAD 83</b>		<b>23/24</b>
<i>ChartTitle: Puget Sound</i>			
<b>Main Panel 1688 PUGET SOUND - -. Page/Side: -</b>			
		NOS	
LAST EDITION	No new editions of chart 18440 will be published. It will be canceled on 05-Jun-24. Comparable or larger scale Electronic Navigational Chart (ENC) coverage is available. See "Cancellation of NOAA Paper and Raster Nautical Charts" in Section I of this LNM for details. A list of all canceled NOAA charts is at <a href="https://www.charts.noaa.gov/MCD/Dole.shtml">https://www.charts.noaa.gov/MCD/Dole.shtml</a> .	--	--
<b>18441</b>	<b>49th Ed. 01-APR-20 Last LNM: 48/17 NAD 83</b>		<b>23/24</b>
<i>ChartTitle: Puget Sound-northern part</i>			
<b>Main Panel 1689 PUGET SOUND - NORTHERN PART - -. Page/Side: -</b>			
		NOS	
LAST EDITION	No new editions of chart 18441 will be published. It will be canceled on 05-Jun-24. Comparable or larger scale Electronic Navigational Chart (ENC) coverage is available. See "Cancellation of NOAA Paper and Raster Nautical Charts" in Section I of this LNM for details. A list of all canceled NOAA charts is at <a href="https://www.charts.noaa.gov/MCD/Dole.shtml">https://www.charts.noaa.gov/MCD/Dole.shtml</a> .	--	--
<b>18443</b>	<b>17th Ed. 01-JAN-10 Last LNM: 40/16 NAD 83</b>		<b>23/24</b>
<i>ChartTitle: Approaches to Everett</i>			
<b>Main Panel 1690 APPROACHES TO EVERETT. Page/Side: N/A</b>			
		NOS	
LAST EDITION	No new editions of chart 18443 will be published. It will be canceled on 05-Jun-24. Comparable or larger scale Electronic Navigational Chart (ENC) coverage is available. See "Cancellation of NOAA Paper and Raster Nautical Charts" in Section I of this LNM for details. A list of all canceled NOAA charts is at <a href="https://www.charts.noaa.gov/MCD/Dole.shtml">https://www.charts.noaa.gov/MCD/Dole.shtml</a> .	--	--
<b>18444</b>	<b>17th Ed. 01-NOV-09 Last LNM: 51/16 NAD 83</b>		<b>23/24</b>
<i>ChartTitle: Everett Harbor</i>			
<b>Main Panel 1691 EVERETT HARBOR. Page/Side: N/A</b>			
		NOS	
LAST EDITION	No new editions of chart 18444 will be published. It will be canceled on 05-Jun-24. Comparable or larger scale Electronic Navigational Chart (ENC) coverage is available. See "Cancellation of NOAA Paper and Raster Nautical Charts" in Section I of this LNM for details. A list of all canceled NOAA charts is at <a href="https://www.charts.noaa.gov/MCD/Dole.shtml">https://www.charts.noaa.gov/MCD/Dole.shtml</a> .	--	--
<b>18446</b>	<b>18th Ed. 01-MAR-11 Last LNM: 48/17 NAD 83</b>		<b>23/24</b>
<i>ChartTitle: Puget Sound-Apple Cove Point to Keyport;Agate Passage</i>			
<b>Main Panel 1707 PUGET SOUND APPLE COVE POINT TO KEYPORT. Page/Side: N/A</b>			
		NOS	
LAST EDITION	No new editions of chart 18446 will be published. It will be canceled on 05-Jun-24. Comparable or larger scale Electronic Navigational Chart (ENC) coverage is available. See "Cancellation of NOAA Paper and Raster Nautical Charts" in Section I of this LNM for details. A list of all canceled NOAA charts is at <a href="https://www.charts.noaa.gov/MCD/Dole.shtml">https://www.charts.noaa.gov/MCD/Dole.shtml</a> .	--	--
<b>18447</b>	<b>30th Ed. 01-SEP-12 Last LNM: 04/19 NAD 83</b>		<b>23/24</b>
<i>ChartTitle: Lake Washington Ship Canal and Lake Washington</i>			
<b>Main Panel 1709 LAKE WASHINGTON SHIP CANAL AND LAKE WASHINGTON. Page/Side: A</b>			
		NOS	
LAST EDITION	No new editions of chart 18447 will be published. It will be canceled on 05-Jun-24. Comparable or larger scale Electronic Navigational Chart (ENC) coverage is available. See "Cancellation of NOAA Paper and Raster Nautical Charts" in Section I of this LNM for details. A list of all canceled NOAA charts is at <a href="https://www.charts.noaa.gov/MCD/Dole.shtml">https://www.charts.noaa.gov/MCD/Dole.shtml</a> .	--	--
<b>18448</b>	<b>36th Ed. 01-DEC-15 Last LNM: 51/21 NAD 83</b>		<b>23/24</b>
<i>ChartTitle: Puget Sound-southern part</i>			
<b>Main Panel 1712 PUGET SOUND SEATTLE TO OLYMPIA. Page/Side: N/A</b>			
		NOS	
LAST EDITION	No new editions of chart 18448 will be published. It will be canceled on	--	--

05-Jun-24. Comparable or larger scale Electronic Navigational Chart (ENC) coverage is available. See "Cancellation of NOAA Paper and Raster Nautical Charts" in Section I of this LNM for details. A list of all canceled NOAA charts is at <https://www.charts.noaa.gov/MCD/Dole.shtml>.

**18449**                      **21st Ed.**                      **01-NOV-19**                      **Last LNM: 41/17**                      **NAD 83**                      **23/24**

*ChartTitle:* **Puget Sound-Seattle to Bremerton**

**Main Panel 1713 PUGET SOUND SEATTLE TO BREMERTON - -. Page/Side: -**

LAST EDITION	No new editions of chart 18449 will be published. It will be canceled on 05-Jun-24. Comparable or larger scale Electronic Navigational Chart (ENC) coverage is available. See "Cancellation of NOAA Paper and Raster Nautical Charts" in Section I of this LNM for details. A list of all canceled NOAA charts is at <a href="https://www.charts.noaa.gov/MCD/Dole.shtml">https://www.charts.noaa.gov/MCD/Dole.shtml</a> .	NOS --	--
--------------	--	-----------	----

**18450**                      **20th Ed.**                      **01-JAN-17**                      **Last LNM: 28/17**                      **NAD 83**                      **23/24**

*ChartTitle:* **Seattle Harbor, Elliott Bay and Duwamish Waterway**

**Main Panel 1714 SEATTLE HARBOR ELLIOTT BAY AND DUWAMISH WATERWAY. Page/Side: A**

LAST EDITION	No new editions of chart 18450 will be published. It will be canceled on 05-Jun-24. Comparable or larger scale Electronic Navigational Chart (ENC) coverage is available. See "Cancellation of NOAA Paper and Raster Nautical Charts" in Section I of this LNM for details. A list of all canceled NOAA charts is at <a href="https://www.charts.noaa.gov/MCD/Dole.shtml">https://www.charts.noaa.gov/MCD/Dole.shtml</a> .	NOS --	--
--------------	--	-----------	----

**18452**                      **17th Ed.**                      **01-OCT-11**                      **Last LNM: 12/14**                      **NAD 83**                      **23/24**

*ChartTitle:* **Sinclair Inlet**

**Main Panel 1715 SINCLAIR INLET. Page/Side: N/A**

LAST EDITION	No new editions of chart 18452 will be published. It will be canceled on 05-Jun-24. Comparable or larger scale Electronic Navigational Chart (ENC) coverage is available. See "Cancellation of NOAA Paper and Raster Nautical Charts" in Section I of this LNM for details. A list of all canceled NOAA charts is at <a href="https://www.charts.noaa.gov/MCD/Dole.shtml">https://www.charts.noaa.gov/MCD/Dole.shtml</a> .	NOS --	--
--------------	--	-----------	----

**18453**                      **27th Ed.**                      **01-MAR-13**                      **Last LNM: 49/18**                      **NAD 83**                      **23/24**

*ChartTitle:* **Tacoma Harbor**

**Main Panel 1716 TACOMA HARBOR. Page/Side: N/A**

LAST EDITION	No new editions of chart 18453 will be published. It will be canceled on 05-Jun-24. Comparable or larger scale Electronic Navigational Chart (ENC) coverage is available. See "Cancellation of NOAA Paper and Raster Nautical Charts" in Section I of this LNM for details. A list of all canceled NOAA charts is at <a href="https://www.charts.noaa.gov/MCD/Dole.shtml">https://www.charts.noaa.gov/MCD/Dole.shtml</a> .	NOS --	--
--------------	--	-----------	----

**18456**                      **21st Ed.**                      **01-NOV-10**                      **Last LNM: 43/17**                      **NAD 83**                      **23/24**

*ChartTitle:* **Olympia Harbor and Budd Inlet**

**Main Panel 1717 OLYMPIA HARBOR AND BUDD INLET. Page/Side: N/A**

LAST EDITION	No new editions of chart 18456 will be published. It will be canceled on 02-Jul-24. Comparable or larger scale Electronic Navigational Chart (ENC) coverage is available. See "Cancellation of NOAA Paper and Raster Nautical Charts" in Section I of this LNM for details. A list of all canceled NOAA charts is at <a href="https://www.charts.noaa.gov/MCD/Dole.shtml">https://www.charts.noaa.gov/MCD/Dole.shtml</a> .	NOS --	--
--------------	--	-----------	----

**18458**                      **17th Ed.**                      **01-OCT-10**                      **Last LNM: 26/15**                      **NAD 83**                      **23/24**

*ChartTitle:* **Hood Canal-South Point to Quatsap Point including Dabob Bay**

**Main Panel 1719 HOOD CANAL TO QUATSAP POINT INCLUDING DABOB BAY. Page/Side: N/A**

LAST EDITION	No new editions of chart 18458 will be published. It will be canceled on 02-Jul-24. Comparable or larger scale Electronic Navigational Chart (ENC) coverage is available. See "Cancellation of NOAA Paper and Raster Nautical Charts" in Section I of this LNM for details. A list of all canceled NOAA charts is at <a href="https://www.charts.noaa.gov/MCD/Dole.shtml">https://www.charts.noaa.gov/MCD/Dole.shtml</a> .	NOS --	--
--------------	--	-----------	----

**18460**                      **14th Ed.**                      **01-JAN-13**                      **Last LNM: 42/17**                      **NAD 83**                      **23/24**

*ChartTitle:* **Stait of Juan de Fuca Entrance**

**Main Panel 1720 STRAIT OF JUAN DE FUCA ENTRANCE. Page/Side: E**

LAST EDITION	No new editions of chart 18460 will be published. It will be canceled on 05-Jun-24. Comparable or larger scale Electronic Navigational Chart	NOS --	--
--------------	--	-----------	----

(ENC) coverage is available. See "Cancellation of NOAA Paper and Raster Nautical Charts" in Section I of this LNM for details. A list of all canceled NOAA charts is at <https://www.charts.noaa.gov/MCD/Dole.shtml>.

<b>18464</b>	<b>25th Ed.</b>	<b>01-JUL-06</b>	<b>Last LNM: 51/21</b>	<b>NAD 83</b>	<b>23/24</b>
<i>ChartTitle: Port Townsend</i>					
<b>Main Panel 1722 PORT TOWNSEND. Page/Side: N/A</b>					
LAST EDITION No new editions of chart 18464 will be published. It will be canceled on 02-Jul-24. Comparable or larger scale Electronic Navigational Chart (ENC) coverage is available. See "Cancellation of NOAA Paper and Raster Nautical Charts" in Section I of this LNM for details. A list of all canceled NOAA charts is at <a href="https://www.charts.noaa.gov/MCD/Dole.shtml">https://www.charts.noaa.gov/MCD/Dole.shtml</a> .					
					NOS
					--
<b>18465</b>	<b>39th Ed.</b>	<b>01-OCT-11</b>	<b>Last LNM: 14/17</b>	<b>NAD 83</b>	<b>23/24</b>
<i>ChartTitle: Strait of Juan de Fuca-eastern part</i>					
<b>Main Panel 1723 STRAIT OF JUAN DE FUCA EASTERN PART. Page/Side: N/A</b>					
LAST EDITION No new editions of chart 18465 will be published. It will be canceled on 05-Jun-24. Comparable or larger scale Electronic Navigational Chart (ENC) coverage is available. See "Cancellation of NOAA Paper and Raster Nautical Charts" in Section I of this LNM for details. A list of all canceled NOAA charts is at <a href="https://www.charts.noaa.gov/MCD/Dole.shtml">https://www.charts.noaa.gov/MCD/Dole.shtml</a> .					
					NOS
					--
<b>18468</b>	<b>19th Ed.</b>	<b>01-SEP-12</b>	<b>Last LNM: 51/16</b>	<b>NAD 83</b>	<b>23/24</b>
<i>ChartTitle: Port Angeles</i>					
<b>Main Panel 1725 PORT ANGELES. Page/Side: N/A</b>					
LAST EDITION No new editions of chart 18468 will be published. It will be canceled on 02-Jul-24. Comparable or larger scale Electronic Navigational Chart (ENC) coverage is available. See "Cancellation of NOAA Paper and Raster Nautical Charts" in Section I of this LNM for details. A list of all canceled NOAA charts is at <a href="https://www.charts.noaa.gov/MCD/Dole.shtml">https://www.charts.noaa.gov/MCD/Dole.shtml</a> .					
					NOS
					--
<b>18471</b>	<b>11th Ed.</b>	<b>01-DEC-07</b>	<b>Last LNM: 51/21</b>	<b>NAD 83</b>	<b>23/24</b>
<i>ChartTitle: Approaches to Admiralty Inlet Dungeness to Oak Bay</i>					
<b>Main Panel 1724 APPROACHES TO ADMIRALTY INLET - DUNGENESS TO OAK BAY. Page/Side: N/A</b>					
LAST EDITION No new editions of chart 18471 will be published. It will be canceled on 02-Jul-24. Comparable or larger scale Electronic Navigational Chart (ENC) coverage is available. See "Cancellation of NOAA Paper and Raster Nautical Charts" in Section I of this LNM for details. A list of all canceled NOAA charts is at <a href="https://www.charts.noaa.gov/MCD/Dole.shtml">https://www.charts.noaa.gov/MCD/Dole.shtml</a> .					
					NOS
					--
<b>18473</b>	<b>10th Ed.</b>	<b>01-APR-20</b>	<b>Last LNM: 48/17</b>	<b>NAD 83</b>	<b>23/24</b>
<i>ChartTitle: Puget Sound-Oak Bay to Shilshole Bay</i>					
<b>Main Panel 1937 OAK BAY TO SHILSHOLE BAY PUGET SOUND - -. Page/Side: -</b>					
LAST EDITION No new editions of chart 18473 will be published. It will be canceled on 02-Jul-24. Comparable or larger scale Electronic Navigational Chart (ENC) coverage is available. See "Cancellation of NOAA Paper and Raster Nautical Charts" in Section I of this LNM for details. A list of all canceled NOAA charts is at <a href="https://www.charts.noaa.gov/MCD/Dole.shtml">https://www.charts.noaa.gov/MCD/Dole.shtml</a> .					
					NOS
					--
<b>18474</b>	<b>11th Ed.</b>	<b>01-DEC-15</b>	<b>Last LNM: 49/18</b>	<b>NAD 83</b>	<b>23/24</b>
<i>ChartTitle: Puget Sound-Shilshole Bay to Commencement Bay</i>					
<b>Main Panel 1679 PUGET SOUND SHILSHOLE BAY TO COMMENCEMENT BAY. Page/Side: A</b>					
LAST EDITION No new editions of chart 18474 will be published. It will be canceled on 02-Jul-24. Comparable or larger scale Electronic Navigational Chart (ENC) coverage is available. See "Cancellation of NOAA Paper and Raster Nautical Charts" in Section I of this LNM for details. A list of all canceled NOAA charts is at <a href="https://www.charts.noaa.gov/MCD/Dole.shtml">https://www.charts.noaa.gov/MCD/Dole.shtml</a> .					
					NOS
					--
<b>18484</b>	<b>12th Ed.</b>	<b>01-JUN-06</b>	<b>Last LNM: 42/17</b>	<b>NAD 83</b>	<b>23/24</b>
<i>ChartTitle: Neah Bay</i>					
<b>Main Panel 1728 NEAH BAY. Page/Side: N/A</b>					
LAST EDITION No new editions of chart 18484 will be published. It will be canceled on 02-Jul-24. Comparable or larger scale Electronic Navigational Chart (ENC) coverage is available. See "Cancellation of NOAA Paper and Raster					
					NOS
					--

Nautical Charts" in Section I of this LNM for details. A list of all canceled NOAA charts is at <https://www.charts.noaa.gov/MCD/Dole.shtml>.

<b>18485</b>	<b>17th Ed.</b>	<b>01-JAN-13</b>	<b>Last LNM: 42/17</b>	<b>NAD 83</b>	<b>23/24</b>
<i>ChartTitle: Cape Flattery</i>					
<b>Main Panel 1729 CAPE FLATTERY. Page/Side: N/A</b>					
LAST EDITION No new editions of chart 18485 will be published. It will be canceled on 02-Jul-24. Comparable or larger scale Electronic Navigational Chart (ENC) coverage is available. See "Cancellation of NOAA Paper and Raster Nautical Charts" in Section I of this LNM for details. A list of all canceled NOAA charts is at <a href="https://www.charts.noaa.gov/MCD/Dole.shtml">https://www.charts.noaa.gov/MCD/Dole.shtml</a> .					
					NOS
					--
<b>18502</b>	<b>88th Ed.</b>	<b>01-FEB-17</b>	<b>Last LNM: 23/21</b>	<b>NAD 83</b>	<b>23/24</b>
<i>ChartTitle: Grays Harbor;Westhaven Cove</i>					
<b>Main Panel 1731 GRAYS HARBOR. Page/Side: A</b>					
LAST EDITION No new editions of chart 18502 will be published. It will be canceled on 02-Jul-24. Comparable or larger scale Electronic Navigational Chart (ENC) coverage is available. See "Cancellation of NOAA Paper and Raster Nautical Charts" in Section I of this LNM for details. A list of all canceled NOAA charts is at <a href="https://www.charts.noaa.gov/MCD/Dole.shtml">https://www.charts.noaa.gov/MCD/Dole.shtml</a> .					
					NOS
					--
<b>18521</b>	<b>77th Ed.</b>	<b>01-MAR-19</b>	<b>Last LNM: 22/21</b>	<b>NAD 83</b>	<b>23/24</b>
<i>ChartTitle: Columbia River Pacific Ocean to Harrington Point;Ilwaco Harbor</i>					
<b>Main Panel 1737 COLUMBIA RIVER PACIFIC OCEAN TO HARRINGTON POINT - -. Page/Side: -</b>					
LAST EDITION No new editions of chart 18521 will be published. It will be canceled on 02-Jul-24. Comparable or larger scale Electronic Navigational Chart (ENC) coverage is available. See "Cancellation of NOAA Paper and Raster Nautical Charts" in Section I of this LNM for details. A list of all canceled NOAA charts is at <a href="https://www.charts.noaa.gov/MCD/Dole.shtml">https://www.charts.noaa.gov/MCD/Dole.shtml</a> .					
					NOS
					--
<b>18523</b>	<b>58th Ed.</b>	<b>01-NOV-13</b>	<b>Last LNM: 47/17</b>	<b>NAD 83</b>	<b>23/24</b>
<i>ChartTitle: Columbia River Harrington Point to Crims Island</i>					
<b>Main Panel 1739 COLUMBIA RIVER HARRINGTON POINT TO CRIMS ISLAND. Page/Side: N/A</b>					
LAST EDITION No new editions of chart 18523 will be published. It will be canceled on 02-Jul-24. Comparable or larger scale Electronic Navigational Chart (ENC) coverage is available. See "Cancellation of NOAA Paper and Raster Nautical Charts" in Section I of this LNM for details. A list of all canceled NOAA charts is at <a href="https://www.charts.noaa.gov/MCD/Dole.shtml">https://www.charts.noaa.gov/MCD/Dole.shtml</a> .					
					NOS
					--
<b>18524</b>	<b>38th Ed.</b>	<b>01-NOV-17</b>	<b>Last LNM: 51/21</b>	<b>NAD 83</b>	<b>23/24</b>
<i>ChartTitle: Columbia River Crims Island to Saint Helens</i>					
<b>Main Panel 1740 COLUMBIA RIVER CRIMS ISLAND TO SAINT HELENS - -. Page/Side: -</b>					
LAST EDITION No new editions of chart 18524 will be published. It will be canceled on 02-Jul-24. Comparable or larger scale Electronic Navigational Chart (ENC) coverage is available. See "Cancellation of NOAA Paper and Raster Nautical Charts" in Section I of this LNM for details. A list of all canceled NOAA charts is at <a href="https://www.charts.noaa.gov/MCD/Dole.shtml">https://www.charts.noaa.gov/MCD/Dole.shtml</a> .					
					NOS
					--
<b>18526</b>	<b>61st Ed.</b>	<b>01-OCT-20</b>	<b>Last LNM: 40/20</b>	<b>NAD 83</b>	<b>23/24</b>
<i>ChartTitle: Port of Portland, Including Vancouver;Multnomah Channel-southern part</i>					
<b>Main Panel 1743 PORT OF PORTLAND INCLUDING VANCOUVER - -. Page/Side: -</b>					
LAST EDITION No new editions of chart 18526 will be published. It will be canceled on 02-Jul-24. Comparable or larger scale Electronic Navigational Chart (ENC) coverage is available. See "Cancellation of NOAA Paper and Raster Nautical Charts" in Section I of this LNM for details. A list of all canceled NOAA charts is at <a href="https://www.charts.noaa.gov/MCD/Dole.shtml">https://www.charts.noaa.gov/MCD/Dole.shtml</a> .					
					NOS
					--
<b>18531</b>	<b>24th Ed.</b>	<b>01-DEC-17</b>	<b>Last LNM: 53/19</b>	<b>NAD 83</b>	<b>23/24</b>
<i>ChartTitle: Columbia River Vancouver to Bonneville; Bonneville Dam</i>					
<b>Main Panel 1750 COLUMBIA RIVER VANCOUVER TO BONNEVILLE - -. Page/Side: -</b>					
LAST EDITION No new editions of chart 18531 will be published. It will be canceled on 02-Jul-24. Comparable or larger scale Electronic Navigational Chart (ENC) coverage is available. See "Cancellation of NOAA Paper and Raster Nautical Charts" in Section I of this LNM for details. A list of all canceled					
					NOS
					--

<b>18532</b>	<b>21st Ed.</b>	<b>01-MAY-06</b>	<b>Last LNM: 17/19</b>	<b>NAD 83</b>	<b>23/24</b>
<i>ChartTitle: Columbia River Bonneville To The Dalles; The Dalles; Hood River</i>					
<b>Inset 1754 HOOD RIVER. Page/Side: N/A</b>					
LAST EDITION No new editions of chart 18532 will be published. It will be canceled on 02-Jul-24. Comparable or larger scale Electronic Navigational Chart (ENC) coverage is available. See "Cancellation of NOAA Paper and Raster Nautical Charts" in Section I of this LNM for details. A list of all canceled NOAA charts is at <a href="https://www.charts.noaa.gov/MCD/Dole.shtml">https://www.charts.noaa.gov/MCD/Dole.shtml</a> .					
				NOS	--
<b>18533</b>	<b>12th Ed.</b>	<b>01-SEP-04</b>	<b>Last LNM: 22/16</b>	<b>NAD 83</b>	<b>23/24</b>
<i>ChartTitle: Columbia River Lake Celilo</i>					
<b>Main Panel 1757 COLUMBIA RIVER LAKE CELILO. Page/Side: N/A</b>					
LAST EDITION No new editions of chart 18533 will be published. It will be canceled on 02-Jul-24. Comparable or larger scale Electronic Navigational Chart (ENC) coverage is available. See "Cancellation of NOAA Paper and Raster Nautical Charts" in Section I of this LNM for details. A list of all canceled NOAA charts is at <a href="https://www.charts.noaa.gov/MCD/Dole.shtml">https://www.charts.noaa.gov/MCD/Dole.shtml</a> .					
				NOS	--
<b>18535</b>	<b>12th Ed.</b>	<b>01-AUG-04</b>	<b>Last LNM: 21/16</b>	<b>NAD 83</b>	<b>23/24</b>
<i>ChartTitle: Columbia River John Day Dam to Blalock</i>					
<b>Main Panel 1759 COLUMBIA RIVER JOHN DAY DAM TO BLALOCK. Page/Side: N/A</b>					
LAST EDITION No new editions of chart 18535 will be published. It will be canceled on 02-Jul-24. Comparable or larger scale Electronic Navigational Chart (ENC) coverage is available. See "Cancellation of NOAA Paper and Raster Nautical Charts" in Section I of this LNM for details. A list of all canceled NOAA charts is at <a href="https://www.charts.noaa.gov/MCD/Dole.shtml">https://www.charts.noaa.gov/MCD/Dole.shtml</a> .					
				NOS	--
<b>18536</b>	<b>12th Ed.</b>	<b>01-JUN-18</b>	<b>Last LNM: 04/15</b>	<b>NAD 83</b>	<b>23/24</b>
<i>ChartTitle: Columbia River Sundale to Heppner Junction</i>					
<b>Main Panel 1761 COLUMBIA RIV SUNDALE-HEPPNER JCT - -. Page/Side: -</b>					
LAST EDITION No new editions of chart 18536 will be published. It will be canceled on 02-Jul-24. Comparable or larger scale Electronic Navigational Chart (ENC) coverage is available. See "Cancellation of NOAA Paper and Raster Nautical Charts" in Section I of this LNM for details. A list of all canceled NOAA charts is at <a href="https://www.charts.noaa.gov/MCD/Dole.shtml">https://www.charts.noaa.gov/MCD/Dole.shtml</a> .					
				NOS	--
<b>18537</b>	<b>12th Ed.</b>	<b>01-DEC-15</b>	<b>Last LNM: 13/17</b>	<b>NAD 83</b>	<b>23/24</b>
<i>ChartTitle: Columbia River Alderdale to Blalock Islands</i>					
<b>Main Panel 1763 COLUMBIA RIVER ALDERDALE TO BLALOCK ISLANDS. Page/Side: N/A</b>					
LAST EDITION No new editions of chart 18537 will be published. It will be canceled on 02-Jul-24. Comparable or larger scale Electronic Navigational Chart (ENC) coverage is available. See "Cancellation of NOAA Paper and Raster Nautical Charts" in Section I of this LNM for details. A list of all canceled NOAA charts is at <a href="https://www.charts.noaa.gov/MCD/Dole.shtml">https://www.charts.noaa.gov/MCD/Dole.shtml</a> .					
				NOS	--
<b>18539</b>	<b>9th Ed.</b>	<b>01-MAR-04</b>	<b>Last LNM: 35/16</b>	<b>NAD 83</b>	<b>23/24</b>
<i>ChartTitle: Columbia River Blalock Islands to McNary Dam</i>					
<b>Main Panel 1765 COLUMBIA RIVER BLALOCK ISLANDS TO MCNARY DAM. Page/Side: N/A</b>					
LAST EDITION No new editions of chart 18539 will be published. It will be canceled on 02-Jul-24. Comparable or larger scale Electronic Navigational Chart (ENC) coverage is available. See "Cancellation of NOAA Paper and Raster Nautical Charts" in Section I of this LNM for details. A list of all canceled NOAA charts is at <a href="https://www.charts.noaa.gov/MCD/Dole.shtml">https://www.charts.noaa.gov/MCD/Dole.shtml</a> .					
				NOS	--
<b>18541</b>	<b>9th Ed.</b>	<b>01-AUG-18</b>	<b>Last LNM: 43/16</b>	<b>NAD 83</b>	<b>23/24</b>
<i>ChartTitle: Columbia River-McNary Dam to Juniper</i>					
<b>Main Panel 1767 COLUMBIA RIV MCNARY DAM-JUNIPER - -. Page/Side: -</b>					
LAST EDITION No new editions of chart 18541 will be published. It will be canceled on 02-Jul-24. Comparable or larger scale Electronic Navigational Chart (ENC) coverage is available. See "Cancellation of NOAA Paper and Raster Nautical Charts" in Section I of this LNM for details. A list of all canceled NOAA charts is at <a href="https://www.charts.noaa.gov/MCD/Dole.shtml">https://www.charts.noaa.gov/MCD/Dole.shtml</a> .					
				NOS	--

<b>18542</b>	<b>10th Ed.</b>	<b>08-JAN-00</b>	<b>Last LNM: 37/16</b>	<b>NAD 83</b>	<b>23/24</b>
<i>ChartTitle: Columbia River Juniper to Pasco</i>					
<b>Main Panel 1769 COLUMBIA RIVER JUNIPER TO PASCO. Page/Side: N/A</b>					
LAST EDITION	No new editions of chart 18542 will be published. It will be canceled on 02-Jul-24. Comparable or larger scale Electronic Navigational Chart (ENC) coverage is available. See "Cancellation of NOAA Paper and Raster Nautical Charts" in Section I of this LNM for details. A list of all canceled NOAA charts is at <a href="https://www.charts.noaa.gov/MCD/Dole.shtml">https://www.charts.noaa.gov/MCD/Dole.shtml</a> .	NOS	--	--	
<b>18543</b>	<b>2nd Ed.</b>	<b>01-DEC-03</b>	<b>Last LNM: 10/14</b>	<b>NAD 83</b>	<b>23/24</b>
<i>ChartTitle: Columbia River Pasco to Richland</i>					
<b>Main Panel 2937 COLUMBIA RIVER, PASCO TO RICHLAND. Page/Side: N/A</b>					
LAST EDITION	No new editions of chart 18543 will be published. It will be canceled on 02-Jul-24. Comparable or larger scale Electronic Navigational Chart (ENC) coverage is available. See "Cancellation of NOAA Paper and Raster Nautical Charts" in Section I of this LNM for details. A list of all canceled NOAA charts is at <a href="https://www.charts.noaa.gov/MCD/Dole.shtml">https://www.charts.noaa.gov/MCD/Dole.shtml</a> .	NOS	--	--	
<b>18545</b>	<b>15th Ed.</b>	<b>01-SEP-03</b>	<b>Last LNM: 22/16</b>	<b>NAD 83</b>	<b>23/24</b>
<i>ChartTitle: Lake Sacajawea</i>					
<b>Main Panel 1771 SNAKE RIVER LAKE SACAJAWEA SIDE A. Page/Side: A</b>					
LAST EDITION	No new editions of chart 18545 will be published. It will be canceled on 02-Jul-24. Comparable or larger scale Electronic Navigational Chart (ENC) coverage is available. See "Cancellation of NOAA Paper and Raster Nautical Charts" in Section I of this LNM for details. A list of all canceled NOAA charts is at <a href="https://www.charts.noaa.gov/MCD/Dole.shtml">https://www.charts.noaa.gov/MCD/Dole.shtml</a> .	NOS	--	--	
<b>18546</b>	<b>10th Ed.</b>	<b>01-FEB-04</b>	<b>Last LNM: 08/17</b>	<b>NAD 83</b>	<b>23/24</b>
<i>ChartTitle: Snake River-Lake Herbert G. West</i>					
<b>Main Panel 1773 SNAKE RIVER LAKE HERBERT G WEST SIDE A. Page/Side: A</b>					
LAST EDITION	No new editions of chart 18546 will be published. It will be canceled on 02-Jul-24. Comparable or larger scale Electronic Navigational Chart (ENC) coverage is available. See "Cancellation of NOAA Paper and Raster Nautical Charts" in Section I of this LNM for details. A list of all canceled NOAA charts is at <a href="https://www.charts.noaa.gov/MCD/Dole.shtml">https://www.charts.noaa.gov/MCD/Dole.shtml</a> .	NOS	--	--	
<b>18547</b>	<b>9th Ed.</b>	<b>01-JAN-16</b>	<b>Last LNM: 40/17</b>	<b>NAD 83</b>	<b>23/24</b>
<i>ChartTitle: Snake River-Lake Bryon</i>					
<b>Main Panel 1776 SNAKE RIVER LAKE BRYAN. Page/Side: A</b>					
LAST EDITION	No new editions of chart 18547 will be published. It will be canceled on 02-Jul-24. Comparable or larger scale Electronic Navigational Chart (ENC) coverage is available. See "Cancellation of NOAA Paper and Raster Nautical Charts" in Section I of this LNM for details. A list of all canceled NOAA charts is at <a href="https://www.charts.noaa.gov/MCD/Dole.shtml">https://www.charts.noaa.gov/MCD/Dole.shtml</a> .	NOS	--	--	
<b>18548</b>	<b>5th Ed.</b>	<b>01-DEC-02</b>	<b>Last LNM: 10/17</b>	<b>NAD 83</b>	<b>23/24</b>
<i>ChartTitle: Snake River-Lower Granite Lake FRANKLIN D. ROOSEVELT LAKE</i>					
<b>Main Panel 1778 SNAKE RIVER LOWER GRANITE LAKE SIDE A. Page/Side: A</b>					
LAST EDITION	No new editions of chart 18548 will be published. It will be canceled on 02-Jul-24. Comparable or larger scale Electronic Navigational Chart (ENC) coverage is available. See "Cancellation of NOAA Paper and Raster Nautical Charts" in Section I of this LNM for details. A list of all canceled NOAA charts is at <a href="https://www.charts.noaa.gov/MCD/Dole.shtml">https://www.charts.noaa.gov/MCD/Dole.shtml</a> .	NOS	--	--	
<b>18554</b>	<b>8th Ed.</b>	<b>01-MAY-10</b>	<b>Last LNM: 47/13</b>	<b>NAD 83</b>	<b>23/24</b>
<i>ChartTitle: Lake Pend Oreille</i>					
<b>Main Panel 1786 LAKE PEND OREILLE. Page/Side: N/A</b>					
LAST EDITION	No new editions of chart 18554 will be published. It will be canceled on 02-Jul-24. Comparable or larger scale Electronic Navigational Chart (ENC) coverage is available. See "Cancellation of NOAA Paper and Raster Nautical Charts" in Section I of this LNM for details. A list of all canceled NOAA charts is at <a href="https://www.charts.noaa.gov/MCD/Dole.shtml">https://www.charts.noaa.gov/MCD/Dole.shtml</a> .	NOS	--	--	
<b>18558</b>	<b>39th Ed.</b>	<b>01-SEP-12</b>	<b>Last LNM: 33/17</b>	<b>NAD 83</b>	<b>23/24</b>
<i>ChartTitle: Tillamook Bay</i>					

**Main Panel 1788 TILLAMOOK BAY. Page/Side: N/A**

LAST EDITION No new editions of chart 18558 will be published. It will be canceled on 02-Jul-24. Comparable or larger scale Electronic Navigational Chart (ENC) coverage is available. See "Cancellation of NOAA Paper and Raster Nautical Charts" in Section I of this LNM for details. A list of all canceled NOAA charts is at <https://www.charts.noaa.gov/MCD/Dole.shtml>. NOS -- --

**18561 13th Ed. 01-DEC-11 Last LNM: 30/20 NAD 83 23/24**

*ChartTitle: Approaches to Yaquina Bay;Depoe Bay*

**CHART OR - APPROACHES TO YAQUINA BAY. Page/Side: N/A**

RELOCATE Yaquina Bay Entrance Lighted Gong Buoy 1 CGD13 from 44-36-13.112N 124-06-03.622W to 44-36-13.562N 124-06-01.040W

**Main Panel 1789 APPROACHES TO YAQUINA BAY. Page/Side: N/A**

LAST EDITION No new editions of chart 18561 will be published. It will be canceled on 02-Jul-24. Comparable or larger scale Electronic Navigational Chart (ENC) coverage is available. See "Cancellation of NOAA Paper and Raster Nautical Charts" in Section I of this LNM for details. A list of all canceled NOAA charts is at <https://www.charts.noaa.gov/MCD/Dole.shtml>. NOS -- --

**18580 24th Ed. 01-FEB-18 Last LNM: 30/20 NAD 83 23/24**

*ChartTitle: Cape Blanco to Yaquina Head*

**Main Panel 1791 CAPE BLANCO TO YAQUINA HEAD - -. Page/Side: -**

RELOCATE Yaquina Bay Entrance Lighted Gong Buoy 1 CGD13 from 44-36-13.112N 124-06-03.622W to 44-36-13.562N 124-06-01.040W

**18581 19th Ed. 01-OCT-11 Last LNM: 30/20 NAD 83 23/24**

*ChartTitle: Yaquina Bay and River;Continuation of Yaquina River*

**CHART OR - YAQUINA BAY AND RIVER. Page/Side: N/A**

RELOCATE Yaquina Bay Entrance Lighted Gong Buoy 1 CGD13 from 44-36-13.112N 124-06-03.622W to 44-36-13.562N 124-06-01.040W

**Main Panel 1792 YAQUINA BAY AND RIVER. Page/Side: N/A**

LAST EDITION No new editions of chart 18581 will be published. It will be canceled on 02-Jul-24. Comparable or larger scale Electronic Navigational Chart (ENC) coverage is available. See "Cancellation of NOAA Paper and Raster Nautical Charts" in Section I of this LNM for details. A list of all canceled NOAA charts is at <https://www.charts.noaa.gov/MCD/Dole.shtml>. NOS -- --

**18583 40th Ed. 01-OCT-11 Last LNM: 33/17 NAD 83 23/24**

*ChartTitle: Siuslaw River*

**Main Panel 1794 SIUSLAW RIVER. Page/Side: N/A**

LAST EDITION No new editions of chart 18583 will be published. It will be canceled on 02-Jul-24. Comparable or larger scale Electronic Navigational Chart (ENC) coverage is available. See "Cancellation of NOAA Paper and Raster Nautical Charts" in Section I of this LNM for details. A list of all canceled NOAA charts is at <https://www.charts.noaa.gov/MCD/Dole.shtml>. NOS -- --

**18584 48th Ed. 01-MAY-07 Last LNM: 37/17 NAD 83 23/24**

*ChartTitle: Umpqua River Pacific Ocean to Reedsport*

**Main Panel 1795 UMPQUA RIVER PACIFIC OCEAN TO REEDSPORT. Page/Side: N/A**

LAST EDITION No new editions of chart 18584 will be published. It will be canceled on 31-Jul-24. Comparable or larger scale Electronic Navigational Chart (ENC) coverage is available. See "Cancellation of NOAA Paper and Raster Nautical Charts" in Section I of this LNM for details. A list of all canceled NOAA charts is at <https://www.charts.noaa.gov/MCD/Dole.shtml>. NOS -- --

**18587 71st Ed. 01-APR-11 Last LNM: 43/19 NAD 83 23/24**

*ChartTitle: Coos Bay*

**Main Panel 1796 COOS BAY. Page/Side: N/A**

LAST EDITION No new editions of chart 18587 will be published. It will be canceled on 31-Jul-24. Comparable or larger scale Electronic Navigational Chart (ENC) coverage is available. See "Cancellation of NOAA Paper and Raster Nautical Charts" in Section I of this LNM for details. A list of all canceled NOS -- --



<b>18588</b>	<b>37th Ed.</b>	<b>01-APR-03</b>	<b>Last LNM: 28/18</b>	<b>NAD 83</b>	<b>23/24</b>
<i>Chart Title: Coquille River Entrance</i>					
<b>Main Panel 1797 COQUILLE RIVER ENTRANCE. Page/Side: N/A</b>					
LAST EDITION No new editions of chart 18588 will be published. It will be canceled on 31-Jul-24. Comparable or larger scale Electronic Navigational Chart (ENC) coverage is available. See "Cancellation of NOAA Paper and Raster Nautical Charts" in Section I of this LNM for details. A list of all canceled NOAA charts is at <a href="https://www.charts.noaa.gov/MCD/Dole.shtml">https://www.charts.noaa.gov/MCD/Dole.shtml</a> .					
				NOS	--
<b>18601</b>	<b>14th Ed.</b>	<b>01-FEB-07</b>	<b>Last LNM: 27/18</b>	<b>NAD 83</b>	<b>23/24</b>
<i>Chart Title: Cape Sebastian to Humbug Mountain</i>					
<b>Main Panel 1801 CAPE SEBASTIAN TO HUMBUG MOUNTAIN. Page/Side: N/A</b>					
LAST EDITION No new editions of chart 18601 will be published. It will be canceled on 31-Jul-24. Comparable or larger scale Electronic Navigational Chart (ENC) coverage is available. See "Cancellation of NOAA Paper and Raster Nautical Charts" in Section I of this LNM for details. A list of all canceled NOAA charts is at <a href="https://www.charts.noaa.gov/MCD/Dole.shtml">https://www.charts.noaa.gov/MCD/Dole.shtml</a> .					
				NOS	--
<b>18602</b>	<b>13th Ed.</b>	<b>01-FEB-12</b>	<b>Last LNM: 24/17</b>	<b>NAD 83</b>	<b>23/24</b>
<i>Chart Title: Pyramid Point to Cape Sebastian;Chetco Cove;Hunters Cove</i>					
<b>Main Panel 1802 PYRAMID POINT TO CAPE SEBASTIAN. Page/Side: N/A</b>					
LAST EDITION No new editions of chart 18602 will be published. It will be canceled on 31-Jul-24. Comparable or larger scale Electronic Navigational Chart (ENC) coverage is available. See "Cancellation of NOAA Paper and Raster Nautical Charts" in Section I of this LNM for details. A list of all canceled NOAA charts is at <a href="https://www.charts.noaa.gov/MCD/Dole.shtml">https://www.charts.noaa.gov/MCD/Dole.shtml</a> .					
				NOS	--

**SECTION V - ADVANCE NOTICES**

This section contains advance notice of approved projects, changes to aids to navigation, or upcoming temporary changes such as dredging, etc. Mariners are advised to use caution while transiting these areas.

**SUMMARY OF ADVANCED APPROVED PROJECTS**

<b><u>Approved Project(s)</u></b>	<b><u>Project Date</u></b>	<b><u>Ref. LNM</u></b>
None		

**Advance Notice(s)**

**OREGON – COOS BAY – Temporary discontinuance of Coos Bay North Jetty Light 3 A and Coos Bay North Jetty Sound Signal**

The Coos Bay North Jetty will be under repair during the summer of 2024. During the repair period Coos Bay North Jetty Light 3A (LLNR 8760) and Coos Bay North Jetty Sound Signal (LLNR 8762) will need to be temporarily discontinued until repairs are complete. Upon completion of the Jetty repairs the light and sound signal will be reestablished. The removal and return of these aids to navigation will be announced via a Broadcast Notice to Mariners.

Mariners are encouraged to share comments on this and the performance and operation of these aids to navigation. All comments should be sent to the email address D13-SMB-D13-LNM@uscg.mil. Any discrepancy for these or other Aids to Navigation should continue to be reported to US Coast Guard Sector Columbia River.

Chart 18587 LNM: 19/24

**OREGON – TILLAMOOK BAY – Changes to the Aids to Navigation at the entrance to Tillamook Bay (Revised from LNM 42/23)**

The U.S. Coast Guard is changing the aids to navigation that mark the entrance into Tillamook Bay:

Tillamook Bay Approach Lighted Whistle Buoy T (LLNR 680-9810) will be disestablished, and a virtual AIS signal will be broadcast in approximate position 45-34-08.600N 123-59-16.900W.

Tillamook Bay Entrance Lighted Buoy 2 (LLNR 9817) has been disestablished.

Tillamook Bay Entrance Lighted Buoy TN (LLNR 9813) has been established at approximate position 45-34-15.833N 123-58-23.466W as a yellow lighted buoy displaying a yellow light flashing every 2. 5 seconds with a nominal range of 3 NM. A synthetic AIS signal will broadcast at this position in the future.

Tillamook Bay Entrance Lighted Buoy TS (LLNR 9815) has been established at approximate position 45-34-01.082N 123-58-23.728W as a yellow lighted buoy displaying a yellow light flashing every 4 seconds (FI Y 4s) with a nominal range of 3 NM. A synthetic AIS signal will broadcast at this position in the future.

Mariners are encouraged to share comments on this proposed change and the performance and operation of these aids to navigation. All comments should be sent to the email address D13-SMB-D13-LNM@uscg.mil. Any discrepancy for these or other Aids to Navigation should continue to be

reported to US Coast Guard Sector Columbia River.

Charts: 18520 18558

LNM: 22/24

**COLUMBIA RIVER – HARRINGTON POINT TO CRIMS ISLAND – Change in the arc of visibility for Skamokawa Range Rear Light**

The US Coast Guard is changing the lighting equipment for Skamokawa Range Rear Light (LLNR 10360). The current lighting is becoming obsolete and subject to failure. To facilitate the replacement of this light, the replacement equipment will reduce the arc of visibility from 14° each side of the range line to 9°. The overall intensity of the light will increase to match the characteristic of Skamokawa Range Front Light (LLNR 10355). This reduction in the spread of the light will prevent it from being seen when transiting towards the shoal water to the south of the channel. This change is expected to occur during the summer of 2024 and will be announced via a Broadcast Notice to Mariners.

Mariners are encouraged to share comments on the performance and operation of these lights as aids to navigation. All comments should be sent to the email address D13-SMB-D13-LNM@uscg.mil. Any discrepancy for Aids to Navigation should continue to be reported to US Coast Guard Sector Columbia River.

Chart 18523

LNM: 17/24

**COLUMBIA RIVER – ST. HELENS TO VANCOUVER – Change in the light characteristic for Vancouver Direction Light**

The lighting equipment for Vancouver Direction Light (LLNR 11210) has become obsolete and is currently failing. To facilitate the replacement of this light with a LED lantern, the characteristic of the light will change from an Isophase 6 second white light (Iso W 6s) with red and green sectors shown over an arc of 4° to an Occulting 4 second red light (Oc R 4s) shown over an arc of 3°, with an increased intensity to combat increased background lighting. This change is expected to occur during the summer of 2024 and will be announced via a Broadcast Notice to Mariners.

Mariners are encouraged to share comments on the performance and operation of these lights as aids to navigation. All comments should be sent to the email address D13-SMB-D13-LNM@uscg.mil. Any discrepancy for Aids to Navigation should continue to be reported to US Coast Guard Sector Columbia River.

Chart 18526

LNM: 17/24

**WASHINGTON – WILLAPA BAY - Disestablishment of Willapa Bay Lighted Buoy "C" and Buoy "D" (Revised from LNM 16/22)**

The U.S. Coast Guard has permanently disestablished Willapa Bay Entrance Lighted Buoy "C" (LLNR 15186) and Willapa Bay Entrance Buoy "D" (LLNR 15167) as the constantly shifting bar at the entrance to Willapa Bay prevents these buoys from marking the navigable channel, and surf conditions make the placement, retrieval and servicing of these buoys hazardous. There are currently no plans by the US Army Corps of Engineers to dredge or maintain the entrance channel into Willapa Bay. Virtual AIS (V-AIS) signals will be established in place of these buoys. The projected approximate locations are:

Willapa Bay V-AIS "A", a special purpose AIS marking good water at 46-44-18.4N 124-06-21.9W  
Willapa Bay V-AIS "B", a special purpose AIS marking good water at 46-43-34.4N 124-03-52.7W

Mariners are encouraged to share comments on the performance and operation of aids to navigation. All comments should be sent to the email address of D13-SMB-D13-LNM@uscg.mil. Any discrepancy for Aids to Navigation should continue to be reported to US Coast Guard Sector Columbia River.

LNM: 18/22

**WASHINGTON – PUGET SOUND – SEATTLE TO OLYMPIA – Change in the arc of visibility for Olympia Inner Range Front Light**

The US Coast Guard is changing the lighting equipment for Olympia Inner Range Front Light (LLNR 17480). The current lighting is becoming obsolete and subject to failure. To facilitate the replacement of this light, the replacement equipment will reduce the arc of visibility from 14° each side of the range line to 9°. The overall intensity of the light will increase to match the characteristic of Olympia Inner 4 Range Rear Light (LLNR 17485). This reduction in the spread of the light will prevent it from being seen when transiting towards the shoal water to the west of the channel. This change is expected to occur during the summer of 2024 and will be announced via a Broadcast Notice to Mariners.

Mariners are encouraged to share comments on the performance and operation of these lights as aids to navigation. All comments should be sent to the email address D13-SMB-D13-LNM@uscg.mil. Any discrepancy for Aids to Navigation should continue to be reported to US Coast Guard Sector Puget Sound.

Charts: 18448 18456

LNM: 17/24

---

**SECTION VI - PROPOSED CHANGES**

Periodically, the Coast Guard evaluates its system of aids to navigation to determine whether the conditions for which the aids to navigation were established have changed. When changes occur, the feasibility of improving, relocating, replacing, or discontinuing aids are considered. This section contains notice(s) of non-approved, proposed projects open for comment. SPECIAL NOTE: Mariners are requested to respond in writing to the District office unless otherwise noted (see banner page for address).

---

**PROPOSED WATERWAY PROJECTS OPEN FOR PUBLIC COMMENT**

<b><u>Proposed Project(s)</u></b>	<b><u>Closing</u></b>	<b><u>Docket No.</u></b>	<b><u>Ref. LNM</u></b>
None			
<b><u>Proposed Change Notice(s)</u></b>			
None			

---

---

## SECTION VII - GENERAL

This section contains information of general concern to the Mariners. Mariners are advised to use caution while transiting these areas.

---

### SUMMARY OF BRIDGE LIGHTING DISCREPANCIES AND CORRECTIONS

The summary of Bridge Lighting Discrepancies and Corrections is listed as Enclosure (1) of this Local Notice to Mariners.

LNM: 23/24

### SUMMARY OF DREDGING OPERATIONS

The summary of Dredging Operations is listed as Enclosure (2) of this Local Notice to Mariners.

LNM: 23/24

### SUMMARY OF MARINE EVENTS

The summary of Marine Events is listed as Enclosure (3) of this Local Notice to Mariners.

LNM: 23/24

### OREGON – UMPQUA RIVER – REEDSPORT – Central Oregon and Pacific Railroad Bridge deviation

The Coast Guard has approved a temporary deviation for the Central Oregon and Pacific Railroad Bridge (LLNR 9369), which spans the Umpqua River at mile 11.5. This deviation will allow the Coos Bay Rail Line to complete rail replacements. The subject bridge will need to be placed in the closed-to-navigation position on every Friday at 0700 through Saturday at 1700 beginning on 19 Jan through 13 Jul 2024. The subject bridge provides 16 feet of vertical clearance in the closed-to-navigation position above high water. Vessels able to pass through the subject bridge in the closed-to-navigation position may do so at any time. No alternate route is available on this part of the Umpqua River for tall vessels. For more information on this bridge deviation contact Brian Early at (541) 266-3718 or bearily@coosbayrailline.com.

Chart 18584

LNM: 02/24

### OREGON – APPROACHES TO YAQUINA AND DEPOE BAY – Bridge construction notice (Revised from LNM 06/21)

ODOT is conducting cathodic protection upgrades and bridge concrete repairs to the Yaquina Bay Highway 101 Bridge (LLNR 9627) in Newport, OR, at Yaquina Bay mile 0.7. A low-level access walkway system has been constructed across the 4 concrete arch spans from the south bank heading north. While erected, the vertical navigation clearance will be reduced to a minimum of 16 feet at MHHW. The low level walkway system spans from the south bank to the North approx. 880 feet. This system will be functional until approximately the summer of 2024. The main navigational channel will not be impeded by the project as that section is made of steel. Mariners are requested not to loiter under the construction area due to fall hazards. For more information, contact Dan Lutze, the project superintendent, at (503) 519-5408.

The project is taking actions to prevent conflicts with birds. ODOT has contracted with the US Department of Agriculture's Animal and Plant Health Inspection Service (APHIS) to perform bird-hazing activities with an aim to prevent nesting in certain sections of the bridge until scaffolding and containment can be installed. Hazing activities may include noise cannons, laser lights, and pyrotechnics. The activities may happen at any time of day, however, the noise cannons will primarily be used for the few hours surrounding sunset each evening. These efforts will have no effect on marine navigation. Hazing activities are expected to begin at the end of March and continue well into June. For more information on the APHIS activities, contact Steven Schultz at (541) 757-4158 or Steven.Schultz@ODOT.Oregon.gov.

Chart 18561

LNM: 12/22

### COLUMBIA RIVER – BLALOCK ISLAND TO MCNARY DAM – LAKE UMATILLA – Bridge Notice (Revised from LNM 30/23)

WSDOT will be painting and making repairs on the I-82 Highway Bridge (LLNR 12752) across the Columbia River at river mile 290.5. Construction will occur from Apr of 2024 to 31 Oct 25, with working hours 24 hours a day, 7 days a week, Monday through Sunday. A containment system will be attached to the bridge 24-hours a day, 7 days per week. The containment structure for painting the existing steel portion below the deck will be installed and will reduce the vertical clearance by 10 feet, however, only half the bridge span will have containment at any given time. The I-82 Highway Bridge provides 85.0 feet of clearance at midspan. The containment system will prevent any falling debris once it is constructed. The traveler support system repairs will be above the bridge deck and all paint work will be underneath the bridge deck. Mariners are advised to use caution while transiting the area. For additional information, please contact Alex Sanguino at (509) 222-2403, email sanguia@wsdot.wa.gov, or Andres Mendoza at (509) 222-2440, email mendoza@wsdot.wa.gov.

Chart 18539

LNM: 30/23

### COLUMBIA RIVER – PASCO TO RICHLAND – LAKE WALLULA – Bridge maintenance

A bridge rehabilitation project will be conducted from 19 Feb – 30 Nov 2024 on the US-395 12 Blue Highway Bridge (LLNR 13057) across the Columbia River at RM 330, between Pasco and Kennewick. There will be a temporary platform system installed under the bridge deck from pier 2 to pier 7 and then again from pier 10 to pier 13, which will reduce the vertical clearance by approximately 5 feet after the platform is installed. The 3 truss spans in the middle bridge (between piers 7 and 10) will not have a working platform beneath the bridge, and therefore will not be impacted. We advise mariners to use caution while in the area. For additional information please contact Tanya Pilarinos, Project Coordinator, at (727) 916-2708 or tpilarinos@southernrb.com.

Chart 18543

LNM: 51/23

### IDAHO – LOWER GRANITE LAKE – CLEARWATER RIVER – Bridge construction notice

Wadsworth Brothers Construction Company will conduct partial demolition and reconstruction of the US-12 Memorial Bridge, AKA the Clearwater Memorial Highway Bridge (LLNR 14072), from 10 Jul 2023 until 11 Sep 2024. The bridge is located at the City of Lewiston, Idaho at river mile 2.0 of the Clearwater River. Work will occur 7 days per week, up to 24 hours per day. Work includes partially demolishing and reconstruction of the existing bridge in two phases, with one half of the bridge affected in each phase. Temporary navigation channels will be marked with red and green buoys with red or green flashing lights, respectively. Depending on the phase of work, the temporary navigation channel will either be between piers 2 and 3 (span 3) or between piers 3 and 4 (span 4). At least one temporary navigation channel will be available at all times, with some short-term closures required for not longer than three hours per day. Any closures will be approved by the Coast Guard. Each temporary navigation channel will have minimum navigation clearances of 23.06' vertical and 107.79' horizontal. Directional signage and a "no wake" zone will also be placed on both the upstream and downstream locations to direct and advise mariners of the designated navigation channels. The work will be aided by one or more work skiffs and barges. Barges will be marked by white lights on all four corners. Mariners are advised to use caution while transiting the area. For additional information contact Linn Bogart, Project Manager, at (801) 509-8808 or lbogart@wadsbro.com.

**WASHINGTON – COLUMBIA RIVER – Bridge maintenance**

WSDOT and Garco Construction will be replacing the decking and repairing piers and crossbeams of the I-90 Highway Bridge across the Columbia River at RM 420 at Vantage WA. Work will start on 04 Mar 2024 and is anticipated to be complete in Nov of 2027. Typical work schedule will be Monday – Friday, 0700 – 1730 with occasional night work. A containment system will be installed on the east span reducing the vertical navigation clearance by 10ft. With all construction projects there is a hazard of falling debris; the containment system is designed to prevent any debris from falling into the water. However, mariners are advised to use caution while transiting the area. For the initial phase the main navigation channel will not have containment installed and provides 73.5 feet of vertical navigation clearance at High Pool Elevation of 571.5 feet. Subsequent phases will have containment installed over the main navigation channel, and updates will be posted in future editions of the LNM. For additional information, contact Justin Ludwig at (208) 704-0122 and email JustinL@garco.com.

LNM: 06/24

**OREGON – PORT OF PORTLAND – WILLAMETTE RIVER – Steel Railroad-Highway Bridge Notice**

The Coast Guard has approved two temporary deviations from the normal operating schedule that governs the Steel Railroad-Highway Bridge (LLNR 14955.3) across the Willamette River, RM 12.1. The Steel Bridge need not open the upper lift to marine traffic for the dates and times listed below. These deviations support Rose Festival Parade events. The lower lift span of the Steel Bridge operates in accordance with 33 CFR 117.5 (open on single). When the lower lift is in the closed-to-navigation position, the bridge provides 26 feet of vertical clearance above Columbia River Datum 0.0; and in the open-to-navigation position with the upper lift in the closed-to-navigation position, the vertical clearance is 71 feet above Columbia River Datum 0.0. The Steel Bridge will be able to open the lower deck, and the upper deck if required, for emergencies. This part of the Willamette River does not have an immediate alternate route for vessels to pass. Vessels able to pass through the Steel Bridge with the lower deck in the closed or open-to-navigation position, or the upper deck in the closed-to-navigation position may do so at any time. The normal operating schedule for the Steel Bridge upper lift is in accordance with 33 CFR § 117.897(c)(3)(ii).

Scheduled events / times of approved deviations:

- Rose Festival Starlight Parade from 1900 – 2330 on 01 Jun 2024;
- Rose Festival Grand Floral Parade from 0700 – 1300 on 08 Jun 2024.

For more information on the closures of the Steel Bridge contact Keith Wagner at kwagner@UP.COM.

Chart 18526

LNM: 16/24

**OREGON – WILLAMETTE RIVER – PORTLAND TO WALNUT EDDY – Bridge construction notice (Revised from LNM 21/22)**

Kiewit Construction will begin a seismic upgrade construction project on the I-205 Highway Bridge (LLNR 15078) AKA, Abernethy Bridge across the Willamette River at RM 25.6, from 20 Jun 22 to 01 Oct 25. The construction activity will take place across the entire river at the bridge. Construction personnel will be working 24 hours a day Monday through Saturday. Bridge construction work will include the installation of multiple temporary work platforms across sections of the river. All river traffic will be restricted to a temporary navigational channel with horizontal clearance of 150 feet wide and vertical clearance of 51.8 feet high at ordinary high water (OHW), or 76.0 feet high at Columbia River Datum (CRD). The temporary navigation channel will be marked with floating buoys with flashing lights to match buoy type ( red nun and green can navigational buoys and white can informational buoys, each with matching color lights flashing at 4-second intervals). Crews will be using floating cranes and barges, attended by tugs throughout the site. All vessels will monitor VHF channels 13 and 16. Barges will be marked on each corner with a white light flashing at 6-second intervals. Each corner of the multiple trestles will also be marked at each corner with a white light flashing at 6-second intervals. Signage on the trestles will communicate the safe distance from the work zone. For an overview of the work site and navigation channel, see Enclosure (4) of LNM 24/22. For more information contact Kiewit Construction, Christopher Locke at (503) 591-5508 or email christopher.locke@kiewit.com.

LNM: 42/23

**OREGON – WILLAMETTE RIVER – Bridge construction (Revised from LNM 48/23)**

ODOT and the Hamilton Construction Company will conduct the complete demolition and reconstruction of the Van Buren Bridge (Oregon Highway 34), across the Willamette River at river mile 131.7 in Corvallis, OR, between Jun 2023 and Dec 2026. Construction activity will take place across the entire river at the bridge location. Construction activities will take place primarily from the hours of 0700 to 1800, Monday through Saturday. Bridge construction work will include geotechnical drilling, removal and replacement of the existing bridge, the installation of a temporary work bridge spanning the river just upstream of the existing bridge, and the installation a temporary diversion bridge just downstream of the existing bridge spanning the river and carrying vehicular traffic.

Jan 2024 update:

Due to river levels and the abundance of debris in the water, there is a high probability of debris building up on the bridge pilings and structure. Mariners are advised that boating conditions in the vicinity of the bridge are very dangerous during high water levels and there may not be a safe passage under the bridge due to the presence of logjams. Additionally, the buoys that mark the temporary navigation channel described below have been removed for the remainder of the winter and spring due to high water / strong water flow. The buoys will be reset once the conditions allow, approximately in May or early June.

A temporary navigable channel for mariners will be maintained with reduced horizontal and vertical clearances for the duration of the project. The temporary channel will provide an horizontal clearance of at least 40 feet and vertical clearance of at least 17.4 feet from the ordinary high-water elevation (OHW). A temporary river clearance gauge will be mounted to the bridge adjacent to the navigable channel at the upstream side of the temporary work bridge and at the downstream side of the diversion bridge. The river clearance gauge will be white with black letters and will show the actual vertical clearance between the water line and overhead obstructions above the navigable channel. Buoy lines, lighting, and signage will direct mariners through the temporary navigable channel and away from "no-entry" construction areas. The temporary navigable channel will be marked with a floating buoy line consisting of orange floating buoys fitted with white colored reflective tape and white flashing lights (FI W 4s) mounted at 100-foot intervals along the buoy line. Flashing yellow lights (FI Y 4s) will be installed on both the temporary diversion bridge and the temporary work bridge trestle at 100-foot intervals along the outside edge of each structure with one centered over the navigable channel at the upstream edge of the temporary work bridge and the downstream edge of the diversion bridge. Red (FI R 4s) and green (FI G 4s) lights will be mounted on the upstream edge of the temporary work bridge and the downstream edge of the diversion bridge, marking the reduced navigable channel limits. Informational signs (white with black lettering) will be mounted on the upstream side of the temporary work bridge and the downstream side of the temporary diversion bridge. Mariners are advised to use caution while transiting the area. A diagram of the placement of warning signs and buoys was included as enclosure (4) of LNM 22/23. For more information contact Markus Schaaf, at (541) 757-4280 or email markus.schaaf@odot.oregon.gov.

LNM: 04/24

**WASHINGTON – COWLITZ RIVER – Bridge notice**

Utility work is planned on State Route 411 Castle Rock Bridge located in Castle Rock, WA, across the Cowlitz River at river mile 17.4. Deck replacement will take place Monday through Friday between 0700 – 1700 from 08 Apr until 14 Jun 2024. The project requires six feet of containment to be installed below the subject bridge's middle 50 foot section. The SR-411 Bridge has a vertical clearance of 8.6 feet at high tide. The subject bridge provides 28 feet of vertical clearance at low tide. A UBIT will be used to assist work efforts under the bridge. The UBIT can lower the vertical clearance to 18 feet at low tide. The UBIT and containment will be equipped with flashing amber lights. For additional information, contact Mark Guz at (360) 518-4464 or mark.guz@lumen.com.

LNM: 13/24

**WASHINGTON – LAKE WASHINGTON SHIP CANAL – UNION BAY REACH – Montlake Street Bridge deviation**

The Coast Guard has approved a temporary deviation from the operating schedule that governs the Montlake Street Bridge (LLNR 18240) across the Lake Washington Ship Canal, mile 5.2, at Seattle, WA. This deviation is necessary to accommodate the University of Washington graduation ceremony. The draw of the Montlake Bridge need not open for marine vessels from 1030 to 1430 and from 1630 to 1830 on 08 Jun 2024. The Montlake Bridge in the closed-to-navigation position provides 30 feet of vertical clearance throughout the navigation channel, and 46 feet of vertical clearance throughout the center 60 feet of the bridge; vertical clearance references to the Mean Water Level of Lake Washington. Vessels able to pass through the bridge in the closed-to-navigation position may do so at any time. The bridge will be able to open for emergencies, and there is no immediate alternate route for vessels to pass. The normal operating schedule for the Montlake Bridge operates in accordance with 33 CFR § 117.1051(e). For more information on these bridge closures contact Colleen Kelly at kellyc@wsdot.wa.gov.

Chart 18447

LNM: 16/24

**WASHINGTON – PUGET SOUND - EVERETT HARBOR – SNOHOMISH RIVER – SR-529 Bridge (South bound) Notice**

The Coast Guard has approved a temporary deviation for the SR-529 Bridge (South bound) (LLNR 18594.9) across Steamboat Slough, mile 1.1, near Marysville, WA. The deviation will allow personnel to safely conduct maintenance and repair to the subject bridge from 0700 on 01 Jan to 2359 on 28 Jun 2024. The draw span will open on signal Tuesday and Friday afternoons from 1200 to 1700 when mariners request 24 hours in advance via marine radio VHF channel 13 or telephone. Work will occur 24 hours per day seven days a week. Three feet of containment will be installed at multiple locations on the bridge that will reduce the vertical clearance from 10 feet above mean high water to 7 feet above mean high water. Containment will be marked with amber flashing lights. Alternate routes into and out of Steamboat Slough can be via Union Slough or Snohomish River. Vessels that do not require a draw opening at the south bound SR-529 Bridge may transit under the bridge at any time but be aware of fall hazards. For more information contact Amelia Scharrer at (425) 225-8703.

Chart 18443

LNM: 51/23

**WASHINGTON – PUGET SOUND – EVERETT HARBOR – SNOHOMISH RIVER – The Interstate 5 Highway Bridge maintenance**

The Interstate 5 Highway Bridge (LLNR 18594.1) across the Snohomish River, mile 5.4, in Everett, WA, will be preserved and painted from 12 Jun 2023 to 31 Oct 2024. Containment up to 4 feet will be installed and reduce the vertical clearance of the subject bridge from 66 feet to 62 feet above high water. Containment will be marked with amber flashing lights on the bottom with flashing amber lights (FL Y 6s). The working hours will be Monday through Saturday 0800 – 1800 and some night work 2100 – 0800. No service barges will be on site. Mariners are free to transit under the subject bridge at any time. For more information contact Michael Xipolitas at (330) 550-7192 or at Mikex@vimaspainting.com

Chart 18444

LNM: 15/23

**WASHINGTON – SPOKANE RIVER – POST FALLS – Spokane Street River Bridge notice**

Post Falls Highway District and contractors will perform bridge repair work from 06 May – 31 Oct 2024 on the Spokane Street River Bridge in Post Falls, Idaho. The work will consist of boats, barges, and dive crews working on the bridge piers above and below water. All construction activity, including dive crews and support vessels, will be within a delineated construction zone immediately adjacent to the bridge piers. The zone will be delineated by a system of buoys, cables, and signage to divert vessels around the construction zone. Vessels will be able to navigate under the bridge at all times. Mariners are advised to use caution while transiting the area. For more information, call Jeff Sorenson, PE, at (208) 758-8601.

LNM: 17/24

**WASHINGTON – LEWIS RIVER – Bridge repair (Revised from LNM 27/23)**

MJ Hughes Construction will be performing bridge deck repair and Under Bridge Inspections on the I-5 Highway Bridge across the Lewis River at RM 5.5. Work will be done on the eastbound bridge from 07 Aug to 30 Sep 23. Work will be done on the westbound bridge from 26 Jul – 18 Sep 24. The bridge deck repair work and under bridge inspection truck will take place Monday – Saturday, 1 or 2 shifts of 10 hours each per day both day and night depending on scope of work. Under bridge work nets will be marked by flashing yellow lights and warning signs posted on the bridge piers up and down river. Mariners are advised to use caution while transiting area. For additional information, contact William Hill at (971) 240-7310 email bill.h@mjhughes.com.

Chart 18524

LNM: 29/23

**SNAKE RIVER – USACE Walla Walla District 2024 Minimum Operating Pool (MOP) operations and spring spill operations**

From April through August 2024, the lower Snake River reservoirs will operate within the Minimum Operating Pool (MOP) ranges. During this time, all lower Snake and lower Columbia River dams will spill for fish passage in accordance with the 2024 Fish Operations Plan. The Fish Operations Plan is posted on the following website: <https://pweb.crohms.org/tmt/documents/fpp/2024/> MOP ranges for each Snake River pool are listed below. (Elevations are in feet using NGVD 29 datum):

Ice Harbor, Lake Sacajawea – 437-438.5

Lower Monumental, Lake Herbert G. West – 537-538.5

Little Goose, Lake Bryan – 633-634.5

Lower Granite, Lower Granite Lake – 733-734.5

Due to recent changes in fish passage spill requirements, USACE anticipates a higher rate of discharge through the spillways compared to previous years, and river navigators may experience strong currents and eddies in the dam tailraces and forebays. If navigators believe river conditions inhibit safe navigation to or from a lock, they may request a temporary adjustment to spill using the contact information below. Contact with lock and dam shift operators should be initiated no later than 30 minutes prior to arriving at the lock, as a requested redistribution or reduction of spill may take as long as 30 minutes to attenuate. Additionally, downstream departures may be delayed for the requested spill change to be implemented and take effect.

McNary Operator at (541) 922-2231. Call Sign WUJ41 McNary.

Ice Harbor Operator at (509) 543-3231. Call Sign WUJ42 Ice Harbor.

Lower Monumental Operator at (509) 282-7231. Call Sign WUJ43 Lower Monumental.

Little Goose Operator at (509) 399-2233 x231. Call Sign WUJ44 Little Goose.

**SNAKE RIVER – USACE Walla Walla District 2024 Minimum Operating Pool (MOP) operations and spring spill operations**

Lower Granite Operator at (509) 843-2231. Call Sign WUJ45 Lower Granite. Navigators are encouraged to contact dam operators and report any unsafe navigation conditions. District staff will evaluate the effects of this year's operations in conjunction with feedback from river users and coordinate adjustments to spillway gate positioning as appropriate. For additional information contact the NWW Operations Division at (509) 527-7364.

Charts: 18545 18546 18547 18548

LNM: 13/24

**WASHINGTON – PUGET SOUND – LAKE WASHINGTON SHIP CANAL – Hiram M. Chittenden Locks Center Miter Gates replacement project (Revised from LNM 02/24)**

USACE is in the middle of a multi-phase maintenance project to replace the center miter gates on the Large Lock chamber. The major project will require several 30-day closures to facilitate demolition, concrete construction, and installation and commissioning of the new miter gates, respectively. There will be at least 15 days between closures to accommodate marine traffic. Additionally, the Small Lock will remain open during these periods and can pass vessels up to 123 feet long and 28 feet wide. While the Large Lock chamber is in service, please note that the center miter gates have been removed, and a temporary marine fender has been installed in the recess where the gates were previously. Mariners are reminded to exercise extreme caution while entering and exiting the large lock chamber, because the center gate recess and the surrounding (demolition) area around the center gate will be fully exposed. Please operate your vessel at a slow speed – 2 ½ knots or lower – and follow the guidance and instructions of the Tower and lock operators.

Currently, the large locks are scheduled to be closed to all vessel traffic during the following periods,

Closure 4: 15 Oct 2024 to 13 Nov 2024

Closure 5: 29 Nov 2024 to 28 Dec 2024

The large lock is expected to be fully operational on 29 Dec 2024.

For current information about activities at the Locks, visit the Locks' website at <https://www.nws.usace.army.mil/Missions/Civil-Works/Locks-and-Dams/Chittenden-Locks/Closures/> and/or like them on Facebook [www.facebook.com/chittendenlocks](http://www.facebook.com/chittendenlocks). For specific questions, mariners may contact the lockmasters at (206) 297-9821.

Chart 18447

LNM: 09/24

**OREGON – CAPE BLANCO TO YAQUINA HEAD – Subsurface research mooring deployment (Revised from LNM 17/24)**

NOAA has deployed a subsurface instrument mooring off the Oregon coast, approximately 53 NM due west of the Umpqua River entrance. The mooring is in approximate position 43-38-42 N, 125-33-06 W in 3050 meters of water, with a mooring float 900 meters below the surface. The equipment is anticipated to remain onsite until October of 2024. For more information, contact Bob Dziak at [robert.p.dziak@noaa.gov](mailto:robert.p.dziak@noaa.gov).

Chart 18003

LNM: 19/24

**OREGON – COOS BAY – North Jetty repair project**

Trade West Construction has resumed work for the season on the Coos Bay North Jetty Repair Contract. All work is taking place with equipment on the jetty. There is no in-water work, however, the movement and placement of extremely large and heavy material poses a significant risk to boaters approaching close to the jetty. Mariners are strongly advised to keep a safe distance from the repair work. For more information, contact Randy Guymon at (435) 703-3462.

Chart 18587

LNM: 15/24

**COLUMBIA RIVER SYSTEM AND WASHINGTON - Testing of prototype plastic buoys**

The U.S. Coast Guard is testing various prototype plastic buoys to observe their station keeping ability and visual and radar detection capabilities. Buoys have been placed at the following locations for evaluation:

On the Columbia, Snake and Willamette Rivers:

Desdemona Sands Lighted Buoy 22 (LLNR 9990)

Hood River Lighted Buoy 36 (LLNR 11932)

Bonneville Pool Lighted Buoy 69 (LLNR 12130)

Lake Celilo Buoy 45 (LLNR 12360)

Lake Wallula Lighted Buoy 2 (LLNR 12815)

Snake River Buoy 14 (LLNR 13195)

Elk Rock Buoy 10 (LLNR 15005)

In Grays Harbor and Admiralty Inlet Washington:

Point Chehalis Lighted Buoy 4 (LLNR 15990)

Point Wilson Lighted Buoy 6 (LLNR 16470)

While the buoys performance is being studied, the US Coast Guard is soliciting comments from the maritime community transiting this waterway. Mariners are requested to respond in writing to the Coast Guard District office with any comments on this change at [D13-SMB-D13-LNM@uscg.mil](mailto:D13-SMB-D13-LNM@uscg.mil). Any discrepancy for these or other Aids to Navigation should continue to be reported to US Coast Guard Sector Columbia River and US Coast Guard Sector Puget Sound.

Charts: 18502 18533 18545

LNM: 52/22

**COLUMBIA RIVER – PACIFIC OCEAN TO HARRINGTON POINT – JOHN DAY CHANNEL – Marine Construction**

Bergerson Construction will be performing pier demolition and construction operations on the John Day Channel off the Columbia River on the eastern side of Tongue Point in approximate location 46-12-12.860 N, 123-45-31.200 W. Work is anticipated to begin on or about 14 Aug and continue through December of 2024, Monday through Friday, from 0700 to 1800 daily. A 60' x 120' crane barge Betsy Ross, a 45' x 112' deck barge, various sectional barges and assist vessel Olaf J will be on site. Personnel on the Betsy Ross and Olaf J will be monitoring VHF-FM channel 17. A yellow, floating turbidity boom/curtain will be used to surround and identify the work area and white flashing lights will be used to demarcate the barges. Mariners are requested to use caution and reduce wake when transiting the area. For additional information, contact site superintendent Mike Puckett at (503) 440-7344, or Bergerson Construction office at (503) 325-7130.

Chart 18521

LNM: 31/23

**COLUMBIA RIVER – PORT OF PORTLAND – OREGON SLOUGH**

The overhead power cables crossing Oregon Slough between Hayden Island and North Portland in approximate position 45-37-32.5 N, 122-43-31.0 W, were damaged due to a collision. The cables have been raised, but their height above the waterway has not been verified, and mariners should assume that the cables are not at their charted clearance of 160 feet.

**COLUMBIA RIVER – PORT OF PORTLAND – OREGON SLOUGH**

Chart 18526

LNM: 19/24

**WASHINGTON – GRAYS HARBOR – Underwater obstruction**

On 19 Nov 2023, a large concrete sinker with a significant amount of chain attached was dredged up by a deep draft vessel anchor. The sinker and chain was cut free in approximate location 46-55-19.506 N, 124-06-19.950 W. This location is in the Grays Harbor Channel near the western end of the South Reach. This obstruction may pose a danger to deep draft vessels transiting this portion of the waterway.

Chart 18502

LNM: 47/23

**WASHINGTON – PUGET SOUND – APPLE COVE TO KEYPORT – Temporary lighted buoy**

NOAA's Pacific Marine Environmental Laboratory deployed a temporary research lighted buoy on 23 Feb 2024, approximately 1700 yards offshore from Spring Beach between Point Wells and Meadow Point, in approximate position 47-43-56.940 N, 122-23-41.820 W. This buoy is expected to remain on station until approximately 01 Sep 2024. The buoy is yellow and grey, round and marked with a flashing yellow four seconds (FL Y 4s) light. For more information, contact Nick Delich at (206) 526-6181 or email at nicholas.delich@noaa.gov.

Chart 18446

LNM: 09/24

**WASHINGTON – PUGET SOUND – APPLE COVE TO KEYPORT – SEATTLE TO BREMERTON – Environmental monitoring buoys**

Puget Sound Restoration Fund is installing research buoys with environmental monitoring instruments at 3 locations in the central Puget Sound:

Tyee Shoal/Wing Point (off Bainbridge Island), 47-37-03.000 N, 122-29-29.040 W.

Point Jefferson (off Indianola), 47-44-30.840 N, 122-29-16.440 W.

Edmonds (north of dive park, Shell Creek) 47-49-13.440 N, 122-22-41.160 W.

Each site will have one surface buoy, yellow in color, 2 ft diameter, with flashing yellow light (FL Y (5) 20s). Buoys will be installed on or about 09 Jan 2023 and remain in place until 31 Dec 2024. Mariners are requested to avoid approaching or tying off to the research buoys. For more information, please contact the Restoration Fund at (206) 780-6947 or email info@restorationfund.org.

Charts: 18446 18449

LNM: 49/22

**WASHINGTON – PUGET SOUND – APPLE COVE TO KEYPORT – Submersible Vehicle testing (Revised from LNM 49/22)**

The Naval Undersea Warfare Center (NUWC) at Keyport, WA is continuing operations in the vicinity of NUWC between University Point, the Brownsville Marina and Keyport through 23 Dec 2024. Operations will normally be conducted Monday through Friday during daylight hours. Operations will involve semisubmersible and submersible vehicles escorted by a small naval craft with a flashing red light. The call sign for the small craft will be "Keyport Range Control" and will monitor VHF-FM channels 12 & 16. All craft transiting the area are requested to exercise caution and maintain a sharp lookout for possible semi-submerged vehicles while the range is in operation. For more information contact Keyport Range Control on VHF-FM channels 12 and 16 or by phone at (360) 396-2313.

Chart 18446

LNM: 49/23

**WASHINGTON – PUGET SOUND – HOOD CANAL – Fisheries Research**

NOAA Fisheries (Northwest Fisheries Science Center) has deployed acoustic receivers in the vicinity of the Hood Canal Bridge (LLNR 17769) during the week of 17 Mar 24. Receivers will listen for, and record detections of salmonids implanted with acoustic transmitters. Deployment locations fall between Twin Spits and 300 meters south of the Hood Canal Bridge, but mostly within 100 meters of the bridge. Moorings will remain in place through September of 2024, and it is requested that mariners avoid disturbance to the seafloor in these areas so as not to dislodge or damage receivers. For additional information, contact the Chief Scientist at (206) 949-7723.

Charts: 18458 18473

LNM: 12/24

**WASHINGTON – PUGET SOUND – SKAGIT BAY – Wave data buoy deployment**

Western Washington University will collect wave data from a single yellow wave buoy to be deployed just to the south of Kiket Island in Skagit Bay in approximate location 48-25-01.060 N, 122-34-15.355 W. The wave buoy is round and approximately 1.4 ft. in diameter and will be accompanied by an additional orange surface float, approximately 1.4 ft. in diameter. The wave buoy will be attached to the seafloor by an approximately 40-foot-long mooring system comprised of sinking crab pot line and galvanized chain. The buoy deployment is planned for on or about 01 Jan 2024 and will remain deployed 24 hours per day until no later than 31 Dec 2024. The R/V Magister will be used to deploy, inspect, and maintain the buoy and mooring system and will monitor VHF-FM Channels 16 and 13. Mariners are requested to keep a safe distance from the wave buoy. For additional information or to report any issues with the buoy, contact Sam Kastner at (360) 650-8626 or kastnes@wwu.edu.

Chart 18441

LNM: 39/23

**SAFETY NOTICE – Navigational Range and Sector Light displays on electronic charts**

The U.S. Coast Guard has become aware that the Range and Sector Light Characteristic labels are not displayed on Electronic Navigational Charts (ENCs) when used in an Electronic Chart Display and Information System (ECDIS) due to limitations of the S-52 ECDIS display specification. Mariners may query the ENC data directly within ECDIS or refer to the Light List for complete information on Range and Sector Light Characteristics.

LNM: 39/22

**OREGON – WASHINGTON – IDAHO – New and improved Merchant Mariner Credential**

The U.S. Coast Guard announced a new merchant mariner credential (MMC) set to launch on 01 Mar 2024. This milestone marks the first comprehensive revision of the mariner credential in nearly a decade and is strategically designed to enhance both quality of service and security within the Marine Transportation System (MTS). U.S. Coast Guard Marine Safety Information Bulletin (MSIB) 01-24, New Merchant Mariner Credential Passport Booklet Replacement, contains details of this new credential, and was included as Enclosure (4) of LNM 12/24. Additionally, the new MMC is announced at the National Maritime Center's Home Page: [https://www.dco.uscg.mil/national\\_maritime\\_center/](https://www.dco.uscg.mil/national_maritime_center/). Mariners are encouraged to visit NMC's website for more information on the credential.

LNM: 09/24

**SECTION VIII - LIGHT LIST CORRECTIONS**

An Asterisk \*, indicates the column in which a correction has been made to new information

## SECTION VIII - LIGHT LIST CORRECTIONS (Continued)

(1) No.	(2) Name and Location	(3) Position	(4) Characteristic	(5) Height	(6) Range	(7) Structure	(8) Remarks
9590	<i>Yaquina Bay Entrance Lighted Gong Buoy 1</i>	44-36-13.562N 124-06-01.040W	Fl G 2.5s		4	Green.	AIS: MMSI 993696003 (21). 23/24

\*

---



---

**ENCLOSURES**


---

**Enclosure 1**

OREGON - WASHINGTON - IDAHO - MONTANA - Summary of Bridge Lighting Discrepancies and Corrections

LNM: 23/24

**Enclosure 2**

OREGON - WASHINGTON - COLUMBIA RIVER - Summary of Dredging Operations

LNM: 23/24

**Enclosure 3**

OREGON - WASHINGTON - COLUMBIA RIVER - Summary of Marine Events

LNM: 23/24

**Enclosure 4**

COLUMBIA RIVER – CRIMS ISLAND TO SAINT HELENS – LONGVIEW – Potential Federal Channel change at Lewis and Clark Highway Bridge

LNM: 20/24

---



---

If you have any questions, comments, or need additional information concerning this or other LNMs (e.g. additions, deletions, corrections) contact the address or phone number on the front page.

CDR Brendan J. Harris  
Chief, Waterways Management Branch  
Thirteenth Coast Guard District



# BRIDGE DISCREPANCIES AND CORRECTIONS

Enclosure (1)

BRIDGE DISCREPANCIES						
Waterway	Light List	Bridge Name	Location	Status	Date Reported	BNM
<b>OREGON COAST</b>						
	9627	Yaquina Bay Highway 101 Bridge	Newport, OR	Protection piers damaged	12/4/2023	None
<b>COLUMBIA RIVER</b>						
	11801	Bridge of the Gods	Cascade Locks, OR	Upriver, WA side red pier light extinguished	11/14/2023	None
<b>SNAKE RIVER</b>						
None						
<b>WILLAMETTE RIVER</b>						
None						
<b>WASHINGTON COAST</b>						
	16072.3	Wishkah Street Bridge	Aberdeen, WA	2-Hour Advance notice required for opening	6/3/2024	0412-24
<b>PUGET SOUND</b>						
	16888	South Park Street Bridge	Seattle, WA	Clearance gauge not legible	12/2/2022	None
	18235	University Street Bridge	Seattle, WA	Extinguished	11/18/2023	0824-23
<b>IDAHO</b>						
	20070	Trail of the Coeur D'Alenes Railroad Bridge	Chatcolet, ID	Multiple lights extinguished	10/11/2022	None
BRIDGE CORRECTIONS						
Waterway	Light List	Bridge Name	Location	Status	Date Reported	BNM
<b>OREGON COAST</b>						
None						
<b>COLUMBIA RIVER</b>						
None						
<b>SNAKE RIVER</b>						
None						
<b>WILLAMETTE RIVER</b>						
None						
<b>WASHINGTON COAST</b>						
None						
<b>PUGET SOUND</b>						
	16887	1st Ave South Highway Twin Bridge	Seattle, WA	Lighting watching properly	6/3/2024	None
	18240	Montlake Street Bridge	Seattle, WA	Lighting watching properly	6/3/2024	None
<b>IDAHO</b>						
None						

**Dredging operations are scheduled or in progress at the following locations:**

<b>Start Date</b>	<b>End Date</b>	<b>Times</b>	<b>Location</b>	<b>Dredge Vessel</b>	<b>Assist Vessel</b>	<b>Channel monitored</b>	<b>Disposal Area</b>	<b>LNM</b>
			None					

**USACE dredges request mariners transit at slowest safe speed to minimize wake when in the vicinity of a dredge and proceed with caution after making passing arrangements. Vessel(s) and/or equipment may encroach into the channel.**

# MARINE EVENTS

Enclosure (3)

## SECTOR COLUMBIA RIVER MARINE EVENTS

EVENT DATE	TIME	EVENT NAME	EVENT LOCATION
8-Jun-24	0700-1800	Portland Rose Festival Dragon Boat Race	Willamette River, Portland, OR
9-Jun-24	0700-1800	Portland Rose Festival Dragon Boat Race	Willamette River, Portland, OR
14-Jun-24	1700	Clearwater River Rush Jet Boat Race	Clearwater River, Orofino, ID
15-Jun-24	All day	Clearwater River Rush Jet Boat Race	Clearwater River, Orofino, ID
15-Jun-24	0800-1800	Richland Regatta	Columbia River, Kennewick, WA
16-Jun-24	0000-1400	Clearwater River Rush Jet Boat Race	Clearwater River, Orofino, ID
16-Jun-24	0800-1800	Richland Regatta	Columbia River, Kennewick, WA
22-Jun-24	2200-2230	Umatilla Landing Days	Columbia River, Umatilla, OR
29-Jun-24	0700-1900	Rooster Rock Outrigger Canoe Race	Columbia River, Corbett, OR
3-Jul-24	2200-2330	Mill Casino Independence Day	Coos Bay, North Bend, OR
3-Jul-24	2200-2330	Waldport Fireworks	Willamette River, Waldport, OR
4-Jul-24	2200-2230	Astoria-Warrenton 4th of July	Columbia River, Astoria, OR
4-Jul-24	2200-2230	Bandon 4th of July	Bullards Beach, Bandon, OR
4-Jul-24	2200-2330	Brookings 4th of July	Brookings/Harbor, OR
4-Jul-24	2200-2230	Cascade Locks 4th of July	Columbia River, Cascade Locks, OR
4-Jul-24	2200-2230	Clatskanie Heritage Days	Columbia River, Clatskanie, OR
4-Jul-24	2200-2230	Fireworks Over the Bay	Coos Bay, Coos Bay, OR
4-Jul-24	2210-2230	Florence Independence Day Celebration	Port of Siuslaw, Florence, OR
4-Jul-24	2200-2230	Fort Dalles Fourth	Columbia River, The Dalles, OR
4-Jul-24	2200-2230	Hood River 4th of July	Hood River, Hood River, OR
4-Jul-24	2200-2230	July 4th Party at Gold Beach	Rogue River, Gold Beach, OR
4-Jul-24	2200-2300	Kennewick River of Fire Fireworks Display	Columbia River, Kennewick, Wa
4-Jul-24	2200-2230	Lincoln City 4th of July	Siletz Bay, Lincoln City, OR
4-Jul-24	2200-2230	Newport 4th of July	Yaquina Bay, Newport, OR
4-Jul-24	2200-2230	Oaks Park 4th of July	Willamette River, Portland, OR
4-Jul-24	2200-2230	Port Orford 4th of July Jubilee	Port Orford, Port Orford, OR
4-Jul-24	2200-2330	St. Helens 4th of July	Columbia River, St. Helens, OR
4-Jul-24	2200-2330	Waterfront Blues Festival	Willamette River, Portland, OR
4-Jul-24	2200-2230	Waverley Country Club 4th of July	Willamette River, Portland, OR
4-Jul-24	2200-2230	Yachats 4th of July	Pacific Ocean, Yachats, OR
6-Jul-24	2200-2230	Ilwaco Fireworks at the Port	Baker Bay, Ilwaco, WA
6-Jul-24	0800-1800	Project Koru PresentsL KB4C Derby 2024	Hood River, Hood River, OR
7-Jul-24	0800-1800	Project Koru PresentsL KB4C Derby 2024	Hood River, Hood River, OR
8-Jul-24	1100-1730	Gorge Downwind Champs	Columbia River, Stevenson, WA to Hood River, OR
9-Jul-24	1100-1730	Gorge Downwind Champs	Columbia River, Stevenson, WA to Hood River, OR
10-Jul-24	1100-1730	Gorge Downwind Champs	Columbia River, Stevenson, WA to Hood River, OR
11-Jul-24	TBD	All Quadrant Candidate Bike Swim	
11-Jul-24	1100-1730	Gorge Downwind Champs	Columbia River, Stevenson, WA to Hood River, OR
12-Jul-24	1100-1730	Gorge Downwind Champs	Columbia River, Stevenson, WA to Hood River, OR

# MARINE EVENTS

Enclosure (3)

13-Jul-24	1100-1730	Gorge Downwind Champs	Columbia River, Stevenson, WA to Hood River, OR
13-Jul-24	1000-1400	Great Columbia Float Fest	Columbia River, Richland, WA - Leslie Grove Park to Howard Amon Park
13-Jul-24	2200-2230	Rainier Days in the Park	Columbia River, Rainier, OR
13-Jul-24	0900-1900	The Big Float	Willamette River, Portland, OR
20-Jul-24	2200-2230	Toledo Summer Festival	Yaquina River, Toledo, OR
26-Jul-24	0600-1800	Tri-City Columbia Cup	Columbia River, Kennewick, OR
27-Jul-24	2200-2230	Garibaldi Days	Garibaldi, OR
27-Jul-24	2200-2230	Irrigon Watermelon Festival Fireworks	Marina Park, Irrigon, OR
27-Jul-24	0600-1800	Tri-City Columbia Cup	Columbia River, Kennewick, OR
28-Jul-24	0600-1800	Tri-City Columbia Cup	Columbia River, Kennewick, OR
2-Aug-24	0500-1500	Columbia River Summer Walleye Classic	Columbia River, Boardman, OR John Day Pool
3-Aug-24	0500-1500	Columbia River Summer Walleye Classic	Columbia River, Boardman, OR John Day Pool
3-Aug-24	0830-1630	Paddle for Life 2024	Lake River, Ridgefield, WA
4-Aug-24	0500-1500	Columbia River Summer Walleye Classic	Columbia River, Boardman, OR John Day Pool
10-Aug-24	1100-1300	2024 SWIM the SNAKE	Snake River, Starbuck, WA
11-Aug-24	0700-1100	Astoria Regatta-Swim Across Lower Columbia	Columbia River, Hungry Harbor, WA to Astoria, OR
2-Sep-24	0730-1200	Columbia River Cross Channel	Columbia River, Cascade Locks, OR
7-Sep-24	0800-1100	Columbia Crossing Swim	Columbia River, Kennewick, OR

## SECTOR PUGET SOUND MARINE EVENTS

EVENT DATE	TIME	EVENT NAME	EVENT LOCATION
5-Jun-24	1830-2200	Summer Series I	Scatchet Head to Shilshole Marina
5-Jun-24	1830-2100	Windseekers Late Spring Series	Commencement Bay & IVO Vashon Is
5-Jun-24	1800-2030	PTSA Wednesday Weekly Races	Port Townsend
5-Jun-24	1800-2000	CYC Seattle Wednesday Night Sailing Series	IVO Shilshole Bay
6-Jun-24	1700-1930	SBYC Duck Dodge Races	Sequim Bay
6-Jun-24	1830-2130	TTPYC Summer Series 2	IVO Des Moines Marina
6-Jun-24	1900-2030	Downtown Sailing Series	IVO Elliott Bay
6-Jun-24	1800-2000	CYC Seattle Thursday Night Sailing Series	IVO Shilshole Bay
7-Jun-24	1800-2100	Log Dodge Series Sailboat Races	Port Gardner and Possession Sound
7-Jun-24	1845-2000	Sailfest	Shilshole Bay
8-Jun-24	0930-1630	Mid-Distance Series Sailboat Races	Port Gardner and Possession Sound
8-Jun-24	0900-2300	Tacoma Yacht Club Summer Vashon Sailboat Race	Commencement Bay - Colvos Passage - East Passage
8-Jun-24	1100-1700	STYC 3 Buoy Fiasco	Shilshole Bay
8-Jun-24	1000-1700	STYC Women At The Helm Regatta	Shilshole Bay

# MARINE EVENTS

Enclosure (3)

9-Jun-24	0500-2400	Race to Alaska Proving Ground	Port Townsend, Victoria BC, Admiralty Inlet, Strait of Juan de Fuca
9-Jun-24	0800	Port Angeles Harbor Swim	Port Angeles
10-Jun-24	0000-1700	Race to Alaska Proving Ground	Port Townsend, Victoria BC, Admiralty Inlet, Strait of Juan de Fuca
10-Jun-24	1730-2100	STYC Ballard Cup Series 2	Shilshole Bay
11-Jun-24	1700-2000	PTSA Tuesday Night Series	Port Townsend
11-Jun-24	1700-2100	Duck Dodge Lake Union	Lake Union
12-Jun-24	1830-2100	Windseekers Late Spring Series	Commencement Bay & IVO Vashon Is
12-Jun-24	1830-2200	CYCE Summer Series II	Scatchet Head to Shilshole Marina
12-Jun-24	1800-2030	PTSA Wednesday Weekly Races	Port Townsend
12-Jun-24	1800-2000	CYC Seattle Wednesday Night Sailing Series	IVO Shilshole Bay
13-Jun-24	1700-1930	SBYC Duck Dodge Races	Sequim Bay
13-Jun-24	1830-2130	TTPYC Summer Series 2	IVO Des Moines Marina
13-Jun-24	1900-2030	Downtown Sailing Series	IVO Elliott Bay
13-Jun-24	1800-2000	CYC Seattle Thursday Night Sailing Series	IVO Shilshole Bay
14-Jun-24	1800-2100	Log Dodge Series Sailboat Races	Port Gardner and Possession Sound
14-Jun-24	1845-2000	Sailfest	Shilshole Bay
15-Jun-24	1100-1700	CYCT Lido 14 Port Orchard Regatta	Sinclair Inlet
15-Jun-24	1000-1700	PTSA Smith Island Race II	Port Townsend to Smith Island
15-Jun-24	1000-1700	J Fest	Shilshole Bay
16-Jun-24	1100-1700	CYCT Lido 14 Port Orchard Regatta	Sinclair Inlet
17-Jun-24	1730-2100	STYC Ballard Cup Series 2	Shilshole Bay
18-Jun-24	1700-2000	PTSA Tuesday Night Series	Port Townsend
18-Jun-24	1700-2100	Duck Dodge Lake Union	Lake Union
19-Jun-24	1830-2200	CYCE Summer Series II	Scatchet Head to Shilshole Marina
19-Jun-24	1830-2130	Windseekers Summer Series	Commencement Bay - Vashon Island
19-Jun-24	1800-2030	PTSA Wednesday Weekly Races	Port Townsend
19-Jun-24	1800-2000	CYC Seattle Wednesday Night Sailing Series	IVO Shilshole Bay
20-Jun-24	1700-1930	SBYC Duck Dodge Races	Sequim Bay
20-Jun-24	1830-2130	TTPYC Summer Series 2	IVO Des Moines Marina
20-Jun-24	1900-2030	Downtown Sailing Series	IVO Elliott Bay
20-Jun-24	1800-2000	CYC Seattle Thursday Night Sailing Series	IVO Shilshole Bay
21-Jun-24	1800-2100	Log Dodge Series Sailboat Races	Port Gardner and Possession Sound
21-Jun-24	1845-2000	Sailfest	Shilshole Bay
21-Jun-24	1830-2100	CYC Salish 200 - Distance Race	San Juan Islands to Vashon
22-Jun-24	starts 0900	Mad Dash II	Edmonds - Port Ludlow
22-Jun-24	1230-1630	Three Hour Tour Series #1 - Manzanita	Commencement Bay - Vashon Is
22-Jun-24	1830-2100	CYC Salish 200 - Distance Race	San Juan Islands to Vashon
22-Jun-24	0700-1700	Round Orcas 2024	Circumnavigate Orcas Island
23-Jun-24	0500-1030	IRONMAN 70.3 Coeur d'Alene	Lake Couer d'Alene
23-Jun-24	ends 1800	Mad Dash II	Edmonds - Port Ludlow
23-Jun-24	1830-2100	CYC Salish 200 - Distance Race	San Juan Islands to Vashon
24-Jun-24	1000-1700	Race Week Anacortes	IVO Guemes Island
25-Jun-24	1700-2000	PTSA Tuesday Night Series	Port Townsend
25-Jun-24	1700-2100	Duck Dodge Lake Union	Lake Union

# MARINE EVENTS

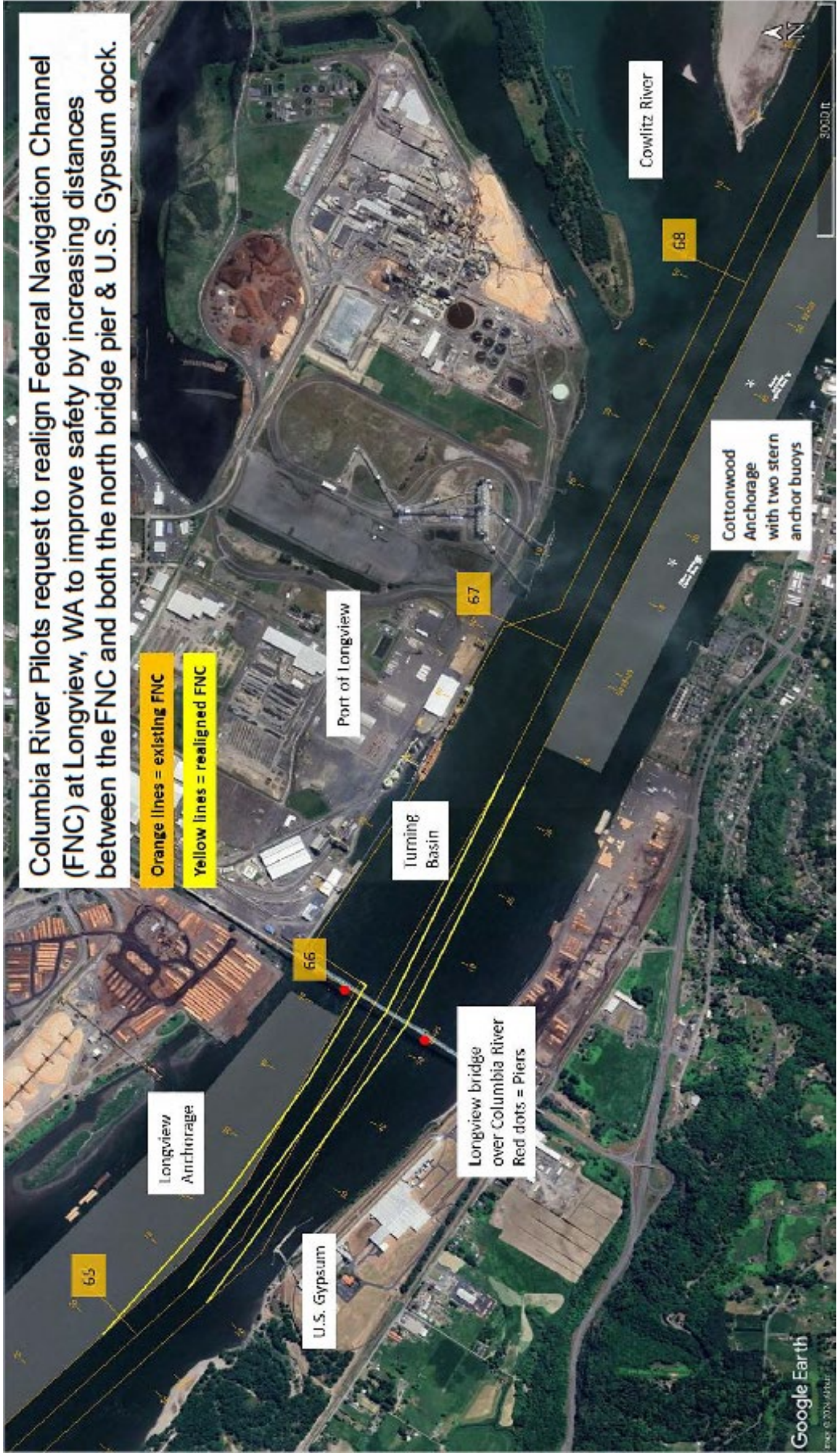
Enclosure (3)

26-Jun-24	1830-2200	CYCE Summer Series II	Scatchet Head to Shilshole Marina
26-Jun-24	1830-2130	Windseekers Summer Series	Commencement Bay - Vashon Island
26-Jun-24	1800-2030	PTSA Wednesday Weekly Races	Port Townsend
26-Jun-24	1800-2000	CYC Seattle Wednesday Night Sailing Series	IVO Shilshole Bay
27-Jun-24	1700-1930	SBYC Duck Dodge Races	Sequim Bay
27-Jun-24	1830-2130	TTPYC Summer Series 2	IVO Des Moines Marina
27-Jun-24	1900-2030	Downtown Sailing Series	IVO Elliott Bay
27-Jun-24	1800-2000	CYC Seattle Thursday Night Sailing Series	IVO Shilshole Bay
28-Jun-24	1800-2100	Log Dodge Series Sailboat Races	Port Gardner and Possession Sound
28-Jun-24	1845-2000	Sailfest	Shilshole Bay
29-Jun-24	1000-1730	CYCE - Mad Dash	Puget Sound to Edmonds
29-Jun-24	2210-2230	Manette Bridge Show_Fireworks	Manette Bridge/Bremerton
30-Jun-24	1000-1730	CYCE - Mad Dash	Edmonds to Puget Sound

Columbia River Pilots request to realign Federal Navigation Channel (FNC) at Longview, WA to improve safety by increasing distances between the FNC and both the north bridge pier & U.S. Gypsum dock.

Orange lines = existing FNC

Yellow lines = realigned FNC



Longview Anchorage

U.S. Gypsum

Turning Basin

Port of Longview

Cottonwood Anchorage with two stern anchor buoys

Cowlitz River

Longview bridge over Columbia River  
Red dots = Piers