



U.S. Department of Homeland Security
United States Coast Guard

LOCAL NOTICE TO MARINERS

District: 9

Week: 38/24

Issued by: Commander (dpw)
Ninth Coast Guard District
1240 East Ninth Street,
Cleveland, OH 44199-2060
Telephone: (571) 608-1683

Direct questions about this LNM to the above address.

All distances in this publication are STATUTE MILES unless otherwise noted.*

District Nine Internet Address https://www.atlanticarea.uscg.mil/Our-Organization/District-9/

District Nine Local Notice to Mariners email Address D09-DG-District-D9-LocalNoticetoMariners@uscg.mil

** Navigation Information Service watchstander, 24 hours a day at (703) 313-5900 ** **Internet Address** https://www.navcen.uscg.gov/

Light List Reference: Commandant Publication P16502.7, VOL VII, 2023 Edition

Coast Pilot Reference: 2024 U.S. Coast Pilot 6 Great Lakes 54th Edition

Coast Pilots, along with corrections are available at: https://nauticalcharts.noaa.gov/publications/coast-pilot/index.html

The Local Notice to Mariners is available on the Internet at https://www.navcen.uscg.gov/local-notice-to-mariners-by-cg-district You will also have links to other government agencies- web pages including the US Army Corps of Engineers and the National Ocean Service.

REPORT DISCREPANCIES IN AIDS TO NAVIGATION TO THE NEAREST COAST GUARD UNIT

The Ninth District and all Sector offices for their areas of responsibility issue a BROADCAST NOTICE TO MARINERS.

The following Broadcast Notice to Mariners have been incorporated into this week's Local Notice to Mariners:9

Sector Eastern Great Lakes - EGL185-24 through EGL190-24

Ninth District - C115-24 through C119-24

Sector Detroit, MI - D119-24 through D124-24

Sector Lake Michigan, WI - M319-24 through M323-24

Sector Northern Great Lakes- NGL090-24 through NGL093-24

The United States Coast Guard Navigation Information Service (NIS), operated by the USCG Navigation Center, is staffed 24 hours a day, 7 days a week. The NIS provides information on the current operational status, effective policies, and general information for GPS and DGPS. The

NIS also disseminates Safety Broadcasts (BNM), Local Notice to Mariners (LNM), and the latest Notice Advisory to Navstar Users (NANU). NANU notices can be obtained via email subscription through the USCG Navigation Center website: https://cgls.uscg.mil/mailman/listinfo/nanu. In addition,

the NIS investigates all reports of degradation or loss of GPS, DGPS or AIS service. Users are encouraged to report all degradation or loss of radio navigation services to the NIS via any of the following: Phone: (703) 313-5900, mail to: webmaster@smtp.navcen.uscg.mil, or on the internet at: https://www.navcen.uscg.gov

ABBREVIATIONS

A through H

ADRIFT - Buoy Adrift
AICW - Atlantic Intracoastal Waterway
AI - Alternating
B - Buoy
BKW - Breakwater
bl - Blast
BNM - Broadcast Notice to Mariner
bu - Blue
C - Canadian
CHAN - Channel
CGD - Coast Guard District
C/O - Cut Off
CONT - Contour
CRK - Creek
CONST - Construction
DAYMK/Daymk - Daymark
DBN/Dbn - Daybeacon
DBD/DAYBD - Dayboard
DEFAC - Defaced
DEST - Destroyed

I through O

I - Interrupted
ICW - Intracoastal Waterway
IMCH - Improper Characteristic
INL - Inlet
INOP - Not Operating
INT - Intensity
ISL - Islet
Iso - Isophase
kHz - Kilohertz
LAT - Latitude
LB - Lighted Buoy
LBB - Lighted Bell Buoy
LHB - Lighted Horn Buoy
LGB - Lighted Gong Buoy
LONG - Longitude
LNM - Local Notice to Mariners
LT - Light
LT CONT - Light Continuous
LTR - Letter
LWB - Lighted Whistle Buoy

P through Z

PRIV - Private Aid
Q - Quick
R - Red
RACON - Radar Transponder Beacon
Ra ref - Radar reflector
RBN - Radio Beacon
REBUILT - Aid Rebuilt
RECOVERED - Aid Recovered
RED - Red Buoy
REFL - Reflective
RRL - Range Rear Light
RELIGHTED - Aid Relit
RELOC - Relocated
RESET ON STATION - Aid Reset on Station
RFL - Range Front Light
RIV - River
RRASS - Remote Radio Activated Sound Signal
s - seconds
SEC - Section
SHL - Shoaling

DISCON - Discontinued
DMGD/DAMGD - Damaged
ec - eclipse
EST - Established Aid
ev - every
EVAL - Evaluation
EXT - Extinguished
F - Fixed
fl - flash
FI - Flashing
G - Green
GIWW - Gulf Intracoastal Waterway
HAZ - Hazard to Navigation
HBR - Harbor
HOR - Horizontal Clearance
HT - Height

LWP - Left Watching Properly
MHz - Megahertz
MISS/MSNG - Missing
Mo - Morse Code
MRASS - Marine Radio Activated Sound Signal
MSLD - Misleading
N/C - Not Charted
NGA - National Geospatial-Intelligence Agency
NO/NUM - Number
NOS - National Ocean Service
NW - Notice Writer
OBSCU - Obscured
OBST - Obstruction
OBSTR - Obstruction
Oc - Occulting
ODAS - Anchored Oceanographic Data Buoy

si - silent
SIG - Signal
SND - Sound
SPM - Single Point Mooring Buoy
SS - Sound Signal
STA - Station
STRUCT - Structure
St M - Statute Mile
TEMP - Temporary Aid Change
TMK - Topmark
TRLB - Temporarily Replaced by Lighted Buoy
TRLT - Temporarily Replaced by Light
TRUB - Temporarily Replaced by Unlighted Buoy
USACE - Army Corps of Engineers
W - White
Y - Yellow

Additional Abbreviations Specific to this LNM Edition:

ADRIFT - Buoy Adrift
AICW - Atlantic Intracoastal Waterway
Al - Alternating
B - Buoy
BKW - Breakwater
bl - Blast
BNM - Broadcast Notice to Mariner
bu - Blue
C - Canadian
CHAN - Channel
CGD - Coast Guard District
C/O - Cut Off
CONT - Contour
CRK - Creek
CONST - Construction
DAYMK/Daymk - Daymark
DBN/Dbn - Daybeacon
DBD/DAYBD - Dayboard
DEFAC - Defaced
DEST - Destroyed
DISCON - Discontinued
DMGD/DAMGD - Damaged
ec - eclipse
EST - Established Aid
ev - every
EVAL - Evaluation
EXT - Extinguished
F - Fixed
fl - flash
FI - Flashing
G - Green
GIWW - Gulf Intracoastal Waterway
HAZ - Hazard to Navigation
HBR - Harbor
HOR - Horizontal Clearance
HT - Height
I - Interrupted
ICW - Intracoastal Waterway
IMCH - Improper Characteristic
INL - Inlet
INOP - Not Operating
INT - Intensity
ISL - Islet
so - Isophase
kHz - Kilohertz
LAT - Latitude
LB - Lighted Buoy
LBB - Lighted Bell Buoy
LHB - Lighted Horn Buoy
LGB - Lighted Gong Buoy
LIB - Lighted Ice Buoy
LONG - Longitude
LNM - Local Notice to Mariners
LT - Light
LT CONT - Light Continuous
LTR - Letter

LWB - Lighted Whistle Buoy
 LWP - Left Watching Properly
 MHz - Megahertz
 MISS/MSNG - Missing
 Mo - Morse Code
 MRASS - Marine Radio Activated Sound Signal
 MSLD - Misleading
 N/C - Not Charted
 NGA - National Geospatial-Intelligence Agency
 NO/NUM - Number
 NOS - National Ocean Service
 NW - Notice Writer
 OBSCU - Obscured
 OBST - Obstruction
 OBSTR - Obstruction
 Oc - Occulting
 ODAS - Anchored Oceanographic Data Buoy
 PRIV - Private Aid
 Q - Quick
 R - Red
 RACON - Radar Transponder Beacon
 Ra ref - Radar reflector
 RBN - Radio Beacon
 REBUILT - Aid Rebuilt
 RECOVERED - Aid Recovered
 RED - Red Buoy
 REFL - Reflective
 RRL - Range Rear Light
 RELIGHTED - Aid Relit
 RELOC - Relocated
 RESET ON STATION - Aid Reset on Station
 RFL - Range Front Light
 RIV - River
 RRASS - Remote Radio Activated Sound Signal
 s - seconds
 SEC - Section
 SHL - Shoaling
 si - silent
 SIG - Signal
 SND - Sound
 SPM - Single Point Mooring Buoy
 SS - Sound Signal
 STA - Station
 STRUCT - Structure
 St M - Statute Mile
 TEMP - Temporary Aid Change
 TMK - Topmark
 TRLB - Temporarily Replaced by Lighted Buoy
 TRLT - Temporarily Replaced by Light
 TRUB - Temporarily Replaced by Unlighted Buoy
 USACE - Army Corps of Engineers
 W - White
 Y - Yellow

SECTION I - SPECIAL NOTICES

This section contains information of special concern to the Mariner.

Changes to the USCG Local Notice to Mariners (LNM) and Light Lists

The U.S. Coast Guard Navigation Center announces upcoming changes to the Local Notice to Mariners (LNM) and the Light List, as part of our efforts to modernize and improve the accessibility, accuracy, and overall user experience for mariners and other stakeholders.

What Is Changing?

1. **Transition From Paper Charts:** In January 2025, NOAA will discontinue the production of all paper charts. In alignment with this change, the Coast Guard will transition from using NOAA Paper Chart Numbers and Editions/Dates for disseminating Marine Safety Information (MSI) to using Official Waterway Names.
2. **How You Will Access LNMs and Light Lists:** The LNM and Light List data will now be available in a geospatial format, which will allow you to visualize information interactively on a map/chart. You can use your mouse wheel or the +/- buttons in the upper left portion of the screen to zoom in or out and navigate to your desired area on the map/chart. Once the area is displayed, you can generate a PDF of the LNM or Light List for that specific area, which you can then save and/or print. Alternatively, you can use a fillable form on our website to select your waterway by name from the Light List and generate the LNM or Light List.

3. LNM and Light List Data Refresh Rate: LNM data will be refreshed every fifteen minutes. Light List data will be refreshed every 24 hours. This will give you a much more up-to-date operating picture, designed to enhance your efficiency and improve safety in your area of transit or planned routes.

4. Elimination of Weekly Files: Weekly LNMs, Weekly Light List Correction Files, Daily Discrepancy Files, and the Summary of Light List Changes will no longer be published to focus on providing the most up-to-date and accessible format. In the near future, we will also publish an Application Programming Interface (API) for interested parties to access the data externally.

Why Are These Changes Being Made?

The modernization of MSI delivery is designed to improve the U.S. Coast Guard's aid-to-navigation data management and dissemination capabilities. By providing frequent updates, geospatial visualization, and digital access, we hope to achieve our goals of:

- **Enhancing Maritime Safety:** By delivering the most current and precise information, mariners can make better-informed decisions, reducing the risk of accidents and ensuring safer navigation.
- **Improving Accessibility:** The shift to geospatial visualization makes it easier for all users, from commercial mariners to recreational boaters, to stay informed.
- **Increasing Efficiency:** The integration of LNM and Light List data into a geospatial format to simplify the gathering of safety information and facilitate easy route planning.

When Will These Changes Take Effect?

The transition to the modernized LNM and Light List platform (the Navigation Center website) will be completed by Monday, September 30th.

How to Access the New Features?

Starting on September 30th, 2024, you will be able to access the updated LNM and Light List through the NAVCEN website. A User Guide will be available on the NAVCEN website. Customers will still have the ability to download legacy versions of these products until October 21st.

For any questions or assistance, please visit our Contact Us Page, select 'LNMs or Light Lists' from the Subject dropdown, and submit your inquiry.

Thank you for your continued support as we work to improve the safety and efficiency of maritime navigation.

LNM: 38/24

Cancellation of NOAA Paper and Raster Nautical Charts

The National Oceanic and Atmospheric Administration (NOAA) is undertaking a multi-year program to end production and maintenance of its suite of over 1,000 traditional paper nautical charts and all associated raster chart products and services, including: Print-on-Demand (POD) paper nautical charts, Full-size chart PDF files, BookletChart™ PDF files, NOAA raster navigational charts (NOAA RNC®), the NOAA RNC tile service, and the online RNC viewer.

Six months notice of the intent to cancel a specific chart is provided in a "Last Edition" notice. The final cancellation of a chart is made in a "Canceled" notice. Both types of notices will appear in LNM Section IV, "Chart Correction." A comprehensive list of all canceled NOAA charts is available at: <http://www.charts.noaa.gov/MCD/Dole.shtml>.

Traditional paper nautical chart production is ending to enable the creation and maintenance of larger scale, more up-to-date, higher quality coverage of NOAA's electronic navigational chart (NOAA ENC®) product. This will significantly enhance the amount of charted detail available to mariners. More information about NOAA's program to sunset traditional paper charts is on the NOAA Coast Survey website at: <https://nauticalcharts.noaa.gov/charts/farewell-to-traditional-nautical-charts.html>

An online NOAA Custom Chart application at: <https://devgis.charttools.noaa.gov/pod> is available to create chart images from ENC data, which may then be printed. Notices to Mariners will not be issued for NOAA Custom Charts.

LNM: 04/20

PUBLICATION OF NVIC 03-23 GUIDANCE ON NAVIGATIONAL SAFETY IN AND AROUND OFFSHORE RENEWABLE ENERGY INSTALLATIONS (OREI)

The Coast Guard has published Navigation and Vessel Inspection Circular (NVIC) 03-23: Guidance on Navigational Safety In and Around Offshore Renewable Energy Installations (OREI) to highlight considerations when planning and undertaking voyages in the vicinity of offshore renewable energy installations (OREI) in U.S. waters. The prudent mariner should review and utilize this NVIC to make an informed risk assessment prior to navigating within or in the vicinity of an OREI. Important Maritime Safety Information (MSI) relating to OREIs is distributed by Local or Broadcast Notices to Mariners (LNM or BNM) promulgated by Coast Guard Districts. Marine Safety Information Bulletins (MSIB) released by the local Captain of the Port (COTP) may be issued to provide supplemental information. Interested parties should contact the Office of Navigation Systems at CGNAV@uscg.mil with any questions or feedback.

LNM: 47/23

MERCHANT MARINER CREDENTIAL

The U.S. Coast Guard announced a new merchant mariner credential (MMC) set to launch on March 1, 2024. This milestone marks the first comprehensive revision of the mariner credential in nearly a decade and is strategically designed to enhance both quality of service and security within the Marine Transportation System (MTS). U.S. Coast Guard Marine Safety Information Bulletin (MSIB) 01-24, New Merchant Mariner Credential Passport Booklet Replacement, has been posted on the DCO's MSIB Site and announced at the National Maritime Center (CG-NMC) Home Page (uscg.mil). Please visit these resources for more information on the credential.

LNM: 09/24

USACE NOTICE TO NAVIGATION INTERESTS

Current Federal Channel conditions, shoaling, and the most recent channel surveys are available at the following Army Corps of Engineers web sites:

Buffalo: <http://www.lrb.usace.army.mil/>
Detroit: <http://www.lre.usace.army.mil/>
Chicago: <http://www.lrc.usace.army.mil/>
Rock Island: <http://www.mvr.usace.army.mil/>
St. Paul: <https://www.mvp.usace.army.mil/>

LNM: 28/12

GREAT LAKES - Great Lakes Water Levels

See Enclosure 1

The current and four week expected water level table for the Great Lakes, Connecting Channels and the St. Lawrence River, will be published in Enclosure 1 following SECTION VIII - LIGHT LIST CORRECTIONS of the Local Notice to Mariner or by visiting the link below:

<https://www.lre.usace.army.mil/Missions/Great-Lakes-Information/Great-Lakes-Water-Levels/Water-Level-Forecast/Connecting-Channels-Forecast/>

LNM: 32/20

LAKE ST. CLAIR - St. Clair Cut-off LB "CO" LLNR 8590

The Coast Guard will be temporarily deploying a buoy of reduced size at St. Clair Cut-Off Preferred Channel Lighted Buoy "CO" (LLNR 8590) in Lake St. Clair, MI. The visual and operational radar range of the buoy will be reduced. The lighted signal range will remain unchanged. The temporary change is in response to delays in the permanent buoy's off-season refurbishment. Upon completion, the permanent buoy will be redeployed back on station. All mariners are requested to use caution while transiting the area.

LNM: 15/24

ST. MARYS RIVER - American Canal - Chart 14884

Northeast Pierhead Light (LLNR 14205) The U. S. Army Corps of Engineers will be relocating this light to the top of their new camera tower. As soon as the position and height of the light's new location is confirmed it will be advertised in Section VIII - Light List Corrections of the LNM.

LNM: 10/21

LAKE MICHIGAN - Seul Choix Point

The Coast Guard has received a report of soundings less than charted depth 3.5NM east/southeast of Seul Choix Point at position 45°53'18"N, 085°50'27"W. The area of reduced depth was reported on the east/west Manistique to Lansing Shoal recommended shipping route. Mariners are urged to use caution while transiting the area.

LNM: 06/24

LAKE MICHIGAN - Algoma

Algoma Light 1 (LLNR 20980) will be temporarily disestablished for marine construction operations on the south breakwater in Algoma, WI. A temporary flashing white light will be installed each night on the end of the breakwater to assist mariners in identifying the construction area. The permanent aid's anticipated reinstatement date is July 15th, 2024. Mariners are urged to use caution while transiting the area.

LNM: 26/24

LAKE SUPERIOR - Isle Royale

The Coast Guard has received a report of a partially submerged spar buoy at position 48°05'49"N, 088°44'12"W, on the north shore of Isle Royale just west of Hawk Island. Mariners are urged to use caution while transiting this area.

LNM: 25-24

LAKE SUPERIOR – Keweenaw – Chart 14972

Keweenaw Upper Entrance West Breakwater Light (LLNR 15115) was reported damaged and swept from its location on the breakwall. The approximately 20' metal tower is submerged in vicinity of the breakwater at an unknown position. All mariners are urged to use caution when transiting the area.

SECTION II - DISCREPANCIES

This section lists all reported and corrected discrepancies related to Aids to Navigation in this edition. A discrepancy is a change in the status of an aid to navigation that differs from what is published or charted.

DISCREPANCIES (FEDERAL AIDS)

LLNR	Aid Name	Status	Chart No.	BNM Ref.	LNM St	LNM End
1615	St. Lawrence Seaway Lighted Buoy 233	LT EXT			37/24	
2730	Buffalo River Light 2	REDUCED INT	14820		37/24	
4155	Cleveland Harbor East Basin Channel Lighted Buoy 8	LT EXT		EGL190-24	37/24	
10035	Lake Huron Cut Lighted Buoy 1	OFF STA		D041-24	23/24	
13030	Munuscong Channel (Upbound) Junction Light ML	AIS INOP			21/24	
13070	Munuscong Channel (Upbound) Lighted Buoy 9	AIS INOP			05/24	
13125	Sailors Encampment Channel Lighted Buoy 21	AIS INOP			05/24	
13280	Middle Neebish South Range Rear Light	DAYMK MISSING		NGL068-24	28/24	
13475	West Neebish Channel (Downbound) Upper Range Rear Light	DAYMK MISSING			36/23	
13645	Sawmill Point Lighted Buoy 22	AIS INOP			05/24	
13695	Moon Island Lighted Buoy 13	AIS INOP			05/24	
13955	Upper Nicolet Range Front Light	DAYMK MISSING			21/24	
13960	Upper Nicolet Range Rear Light	DAYMK MISSING		NGL004-24	26/23	
14050	Six Mile Point Range Rear Light	DAYMK MISSING		S079-23	10/21	
14780	Keweenaw Waterway Lighted Buoy 3	LT EXT			37/24	
14880	Keweenaw Waterway Light 25	STRUCT DEST/TRLB		NGL047-24	19/24	
15115	Keweenaw Upper Entrance West Breakwater Light	STRUCT DEST		S015-23	02/23	
15840	Duluth Harbor Breakwater Isolated Danger Buoy	MISSING			29/24	
17210	Canoe Channel Daybeacon 8	STRUCT DEST/TRUB			23/22	

DISCREPANCIES (FEDERAL AIDS) CORRECTED

LLNR	Aid Name	Status	Chart No.	BNM Ref.	LNM St	LNM End
1400	Point Vivian Leading Light	WATCHING PROPERLY			38/24	40/24
2730	Buffalo River Light 2	RELIGHTED	14820		37/24	40/24
3091	Strawberry Island Cut Lighted Buoy 15	WATCHING PROPERLY			38/24	40/24
3135	Strawberry Island Cut Lighted Buoy 20	WATCHING PROPERLY			38/24	40/24
8325	Scott Middle Ground Upper Junction Buoy	RESET ON STATION			38/24	40/24
10540	Gravelly Shoal Light	RELIGHTED	14860		37/24	40/24
15175	Copper Harbor Light	WATCHING PROPERLY			38/24	40/24
15195	Eagle Harbor Light	WATCHING PROPERLY			38/24	40/24
15510	Bayfield Harbor South Breakwater Light	WATCHING PROPERLY			37/24	40/24

DISCREPANCIES (PRIVATE AIDS)

LLNR	Aid Name	Status	Chart No.	BNM Ref.	LNM St	LNM End
1930	Black River Bay Buoy 10	OFF STA			38/24	

4256	Cashelmarra Jetty Light	LT IMCH			24/24
4960	Sandusky Yacht Club Light 1	LT EXT	D026-24		18/24
4965	Sandusky Yacht Club Light 2	LT EXT	D027-24		18/24
5247	Johnson Island Light 1	LT EXT			36/24
6015	Cooley Canal Front Range Light	STRUCT DEST			36/24
6025	Toledo Water Works Intake Crib Lights	LT EXT	D034-24		20/24
8892	ACOE LKSTC Water Sensor Buoy 1	MISSING	D059-24		26/24
8905	St. Clair Municipal Park Entrance Buoy 1	MISSING			24/24
8910	St. Clair Municipal Park Entrance Buoy 2	OFF STA			34/24
8915	St. Clair Municipal Park Entrance Buoy 3	OFF STA			34/24
8920	St. Clair Municipal Park Entrance Buoy 4	OFF STA			34/24
8950	Black Creek Buoy 3	MISSING			34/24
19860	Filtration Plant Breakwater South End Light	LT EXT			23/24
19865	Filtration Plant Breakwater North End Light	LT EXT			23/24
19931	Thirty-First Street Jetty Danger Lighted Buoy A	MISSING			23/24
19932	Thirty-First Street Jetty Danger Lighted Buoy B	MISSING			23/24
19933	Thirty-First Street Jetty Danger Lighted Buoy C	MISSING			23/24
19934	Thirty-First Street Inner Jetty Light	LT EXT			23/24
20470	Racine Launch Basin Entrance Light	LT EXT			22/24
20490	Racine East Harbor Entrance Light 2	LT EXT			28/24
20545	Racine Harbor Light 13	LT EXT			22/24
20681	Lakeshore State Park Entrance Lt 1	LT EXT	M116-24		21/24
20700	Milwaukee City South Pier No. 2 South Light	LT EXT	M165-24		24/24
20729	South Shore Park Entrance Lighted Buoy 1	MISSING			21/24
20730	South Shore Park Entrance Lighted Buoy 2	MISSING			21/24
21405	Shipyard Island Marina North Dock Light	LT IMCH	M199-24		27/24

DISCREPANCIES (PRIVATE AIDS) CORRECTED

LLNR	Aid Name	Status	Chart No.	BNM Ref.	LNM St	LNM End
------	----------	--------	-----------	----------	--------	---------

None

PLATFORM DISCREPANCIES

Name	Status	Position	BNM Ref.	LNM St	LNM End
------	--------	----------	----------	--------	---------

None

PLATFORM DISCREPANCIES CORRECTED

Name	Status	Position	BNM Ref.	LNM St	LNM End
------	--------	----------	----------	--------	---------

None

SECTION III - TEMPORARY CHANGES and TEMPORARY CHANGES CORRECTED

This section contains temporary changes and corrections to Aids to Navigation for this edition. When charted aids are temporarily relocated for dredging, testing, evaluation, or marking an obstruction, a temporary correction shall be listed in Section IV giving the new position.

TEMPORARY CHANGES

LLNR	Aid Name	Status	Chart No.	BNM Ref.	LNM St	LNM End
2105	Oswego Harbor West Channel Light 2	TRLB	14786		17/19	

8240	William Livingstone Memorial Light	Reduced Intensity	33/21
9690	Grande Pointe Light 23	TRLT	47/20
13710	West Neebish Channel (Downbound) Lighted Buoy 10	DISCONTINUED FOR DREDGING	32/24
14540	Little Lake Harbor Light 2	DISCONTINUED FOR DREDGING	47/22
15220	Ontonagon Harbor East Breakwater Light	DISCONTINUED	02/22
16963	Driftwood Point Light	DISCONTINUED	45/20
20980	Algoma Light 1	DISCONTINUED	25/24

TEMPORARY CHANGES CORRECTED

LLNR	Aid Name	Status	Chart No.	BNM Ref.	LNM St	LNM End
------	----------	--------	-----------	----------	--------	---------

None

PLATFORM TEMPORARY CHANGES

Name	Status	Position	BNM Ref.	LNM St	LNM End
------	--------	----------	----------	--------	---------

None

PLATFORM TEMPORARY CHANGES CORRECTED

Name	Status	Position	BNM Ref.	LNM St	LNM End
------	--------	----------	----------	--------	---------

None

SECTION IV - CHART CORRECTIONS

This section contains corrections to federally and privately maintained Aids to Navigation, as well as NOS corrections.

This section contains corrective actions affecting chart(s). Corrections appear numerically by chart number, and pertain to that chart only. It is up to the mariner to decide which chart(s) are to be corrected. The following example explains individual elements of a typical chart correction.

Chart Number	Chart Edition	Edition Date	Last Local Notice to Mariners	Horizontal Datum Reference	Source of Correction	Current Local Notice to Mariners
12327	91st Ed.	19-APR-97	Last LNM: 26/97	NAD 83		27/97
Chart Title: NY-NJ-NEW YORK HARBOR - RARITAN RIVER						
Main Panel 2245 NEW YORK HARBOR						
(Temp) ADD	NATIONAL DOCK CHANNEL BUOY 3				CGD01 at 40-41-09.001N	074-02-48.001W
Corrective Action	Green can	Object of Corrective Action			Position	

(Temp) indicates that the chart correction action is temporary in nature. Courses and bearings are given in degrees clockwise from 000 true. Bearings of light sectors are toward the light from seaward. The nominal range of lights is expressed in nautical miles (NM) unless otherwise noted.

14786 **15th Ed.** **01-SEP-18** **Last LNM: 40/17** **NAD 83** **38/24**

Chart Title: **SMALL-CRAFT BOOK CHART New York State Canal System (book of 61 Charts)**

Main Panel **1100 OSWEGO RIVER - MINETTO** - -. Page/Side: -

LAST EDITION No new editions of chart 14786 will be published. It will be canceled on 04-Dec-24. Comparable or larger scale Electronic Navigational Chart (ENC) coverage is available. See "Cancellation of NOAA Paper and Raster Nautical Charts" in Section I of this LNM for details. A list of all canceled NOAA charts is at <https://www.charts.noaa.gov/MCD/Dole.shtml>.

14800 **10th Ed.** **01-SEP-05** **Last LNM: 33/13** **NAD 83** **38/24**

Chart Title: **Lake Ontario (Metric)**

Main Panel **1112 LAKE ONTARIO**. Page/Side: **N/A**

LAST EDITION No new editions of chart 14800 will be published. It will be canceled on 30-Oct-24. Comparable or larger scale Electronic Navigational Chart (ENC) coverage is available. See "Cancellation of NOAA Paper and Raster Nautical Charts" in Section I of this LNM for details. A list of all canceled

14820	22nd Ed.	01-MAY-20	Last LNM: 48/19	NAD 83	38/24
<i>ChartTitle: Lake Erie</i>					
Main Panel 1134 LAKE ERIE - -. Page/Side: -					
LAST EDITION No new editions of chart 14820 will be published. It will be canceled on 30-Oct-24. Comparable or larger scale Electronic Navigational Chart (ENC) coverage is available. See "Cancellation of NOAA Paper and Raster Nautical Charts" in Section I of this LNM for details. A list of all canceled NOAA charts is at https://www.charts.noaa.gov/MCD/Dole.shtml .					
				NOS	--
				--	--
14860	37th Ed.	01-MAY-16	Last LNM: 19/22	NAD 83	38/24
<i>ChartTitle: Lake Huron</i>					
Main Panel 1312 LAKE HURON. Page/Side: A					
LAST EDITION No new editions of chart 14860 will be published. It will be canceled on 30-Oct-24. Comparable or larger scale Electronic Navigational Chart (ENC) coverage is available. See "Cancellation of NOAA Paper and Raster Nautical Charts" in Section I of this LNM for details. A list of all canceled NOAA charts is at https://www.charts.noaa.gov/MCD/Dole.shtml .					
				NOS	--
				--	--
14901	18th Ed.	01-AUG-20	Last LNM: 19/22	NAD 83	38/24
<i>ChartTitle: Lake Michigan (Mercator Projection)</i>					
Main Panel 1361 LAKE MICHIGAN - -. Page/Side: -					
DELETE	Sounding in Fathoms; 6 (NOS NW-31438)			NOS	
				43-00-56.363N	087-51-44.504W
ADD	Sounding in Fathoms; 6 (NOS NW-31438)			NOS	
				43-01-17.705N	087-51-42.149W
ADD	Sounding in Fathoms; 7 (NOS NW-31438)			NOS	
				43-00-37.838N	087-48-53.022W
LAST EDITION	No new editions of chart 14901 will be published. It will be canceled on 30-Oct-24. Comparable or larger scale Electronic Navigational Chart (ENC) coverage is available. See "Cancellation of NOAA Paper and Raster Nautical Charts" in Section I of this LNM for details. A list of all canceled NOAA charts is at https://www.charts.noaa.gov/MCD/Dole.shtml .			--	--
				--	--
14902	32nd Ed.	01-NOV-20	Last LNM: 19/22	NAD 83	38/24
<i>ChartTitle: North end of Lake Michigan, including Green Bay</i>					
Main Panel 1362 NORTH END OF LAKE MICHIGAN INCLUDING GREEN BAY - -. Page/Side: -					
LAST EDITION No new editions of chart 14902 will be published. It will be canceled on 30-Oct-24. Comparable or larger scale Electronic Navigational Chart (ENC) coverage is available. See "Cancellation of NOAA Paper and Raster Nautical Charts" in Section I of this LNM for details. A list of all canceled NOAA charts is at https://www.charts.noaa.gov/MCD/Dole.shtml .					
				NOS	--
				--	--
14961	13th Ed.	01-FEB-16	Last LNM: 36/19	NAD 83	38/24
<i>ChartTitle: Lake Superior (Mercator Projection)</i>					
Main Panel 1499 LAKE SUPERIOR. Page/Side: A					
LAST EDITION No new editions of chart 14961 will be published. It will be canceled on 30-Oct-24. Comparable or larger scale Electronic Navigational Chart (ENC) coverage is available. See "Cancellation of NOAA Paper and Raster Nautical Charts" in Section I of this LNM for details. A list of all canceled NOAA charts is at https://www.charts.noaa.gov/MCD/Dole.shtml .					
				NOS	--
				--	--

SECTION V - ADVANCE NOTICES

This section contains advance notice of approved projects, changes to aids to navigation, or upcoming temporary changes such as dredging, etc. Mariners are advised to use caution while transiting these areas.

SUMMARY OF ADVANCED APPROVED PROJECTS

<u>Approved Project(s)</u>	<u>Project Date</u>	<u>Ref. LNM</u>
None		

Advance Notice(s)

LAKE MICHIGAN - Green Bay - Cedar River

The Coast Guard is evaluating the redesign of the entrance channel at the Cedar River in Western Green Bay, WI. The number of aids to navigation in the channel will be reduced from eleven to seven. The remaining aids will be renamed in order to better identify progression through the channel.

The following list of changes is being proposed:

- Cedar River Entrance Lighted Buoy 1 will remain unchanged.
- Cedar River Buoy 4 will be renamed Cedar River Lighted Buoy 2, and the previously unlighted buoy will be lit with a flashing red light.
- Cedar River Buoy 3 will remain unchanged.
- Cedar River Buoy 5 will be permanently disestablished.
- Cedar River Buoy 6 will be permanently disestablished.
- Cedar River Buoy 9 will be renamed Cedar River Buoy 5.
- Cedar River Buoy 10 will be renamed Cedar River Buoy 4.
- Cedar River Buoy 11 will be permanently disestablished.
- Cedar River Buoy 12 will be permanently disestablished.
- Cedar River Light 2 will be renamed Cedar River East Pierhead Light. The operation of the light and daymarks will remain unchanged.
- Cedar River Pierhead Light will be renamed Cedar River West Pierhead Light. The operation of the light and daymarks will remain unchanged.

Anticipated changes would take place in spring of 2025 during the seasonal establishment of the waterway.

LNM: 31/24

LAKE OF THE WOODS - Oak Island

The Coast Guard is changing the operation of the floating aids in vicinity of Oak Island, Little Traverse Bay in Lake of the Woods, MN.

-Oak Island Buoy 2 (LLNR 16977) will be renamed Oak Island Lighted Buoy 2, and the previously unlighted buoy will be lit with a flashing red light. The characteristics of the light will be Fl R 4s. The buoy will be relocated to position 49°18'28"N, 094°49'30"W in order to mark best water.

-Oak Island Buoy 4 (LLNR 16976) will be permanently disestablished.

Mariners are urged to use caution while transiting the area.

LNM: 38/24

SECTION VI - PROPOSED CHANGES

Periodically, the Coast Guard evaluates its system of aids to navigation to determine whether the conditions for which the aids to navigation were established have changed. When changes occur, the feasibility of improving, relocating, replacing, or discontinuing aids are considered. This section contains notice(s) of non-approved, proposed projects open for comment. SPECIAL NOTE: Mariners are requested to respond in writing to the District office unless otherwise noted (see banner page for address).

PROPOSED WATERWAY PROJECTS OPEN FOR PUBLIC COMMENT

<u>Proposed Project(s)</u>	<u>Closing</u>	<u>Docket No.</u>	<u>Ref. LNM</u>
None			

Proposed Change Notice(s)

For any comments or questions on these proposed changes please contact:

The Ninth District Aids to Navigation manager at Brian.D.Hawkins2@uscg.mil or call (206) 815-0913.

LNM: 30/13

SECTION VII - GENERAL

This section contains information of general concern to the Mariners. Mariners are advised to use caution while transiting these areas.

Waterways Analysis and Management System

The Ninth Coast Guard District will be reviewing the following waterways throughout the Great Lakes Region. The study focuses primarily on aids to navigation in the waterway. Public comments are an important tool in this process so that we can provide the adequate markings and the right mix of signals to a waterway for safe navigation. Comments on the below listed waterways can be sent to Brian.D.Hawkins2@uscg.mil or by calling (206) 815-0913. You may also complete the survey attached to the Local Notice to Mariner and either email it or mail it to: Commander (dpw), Ninth Coast Guard District, 1240 East Ninth St., Cleveland, Ohio 44199.

The following waterways will be evaluated for the duration of calendar year 2024 and will be accepting comment until 31Dec2024:

- Sackets Harbor
(LLNR 1755-2024.9)
- Buffalo Harbor/Black Rock Canal
(LLNR 2665-3360)
- Dunkirk Harbor
(LLNR 3365-3492)
- Erie Harbor
(LLNR 3495-3696)
- Conneaut Harbor
(LLNR 3700-3735)
- Ashtabula Harbor
(LLNR 3740-3830)
- Fairport Harbor

LNM: 11/24

GREAT LAKES - Marine Events

Marine events such as races, parades, regattas, and fireworks displays are frequently held in the Great Lakes region. Advance information on specific events is contained in enclosure (2) of this publication. The public is reminded to listen to the local broadcast notice to mariners for the most up-to-date information on a marine event. Mariners are advised that some events may require temporary aids to navigation that are not displayed on a chart or in the Light List, and that they should exercise additional caution while operating in the vicinity of a scheduled marine event.

LNM: 24/13

LAKE ONTARIO – Little Sodus Bay – Chart 14800

There is an uncharted breakwall along the shore extending from the west side of Little Sodus Bay entrance to the boat ramp of West Barrier Bar County Park. The breakwall is unmarked and unlit. Visibility of the breakwall may be impacted due to high water. All mariners are requested to transit the area with caution.

LNM: 19/23

LAKE ONTARIO - Crescent Beach Breakwater

A series of breakwater barriers are being constructed in Lake Ontario near Crescent Beach, to the east of Sodus Point, NY. Work will be conducted from 01 April 2024, to 30 November 2024 between the hours of 0500 to 2000. Hours are dependent on weather conditions. Construction vessels can be hailed on VHF Channel 16. Inquiries related to the project can be directed to Mr. Glenn Roet at (315) 575-6091. All mariners are advised to stay clear of workboats, barges, floating or submerged equipment in the operational work area between floating navigation buoys detailed below and the shoreline.

- 1 N43°16'21.77817" W76°57'52.20335"
- 2 N43°16'20.93870" W76°57'46.38712"
- 3 N43°16'20.17974" W76°57'41.15137"
- 4 N43°16'19.26083" W76°57'36.11887"
- 5 N43°16'17.99008" W76°57'30.33037"
- 6 N43°16'16.95743" W76°57'25.59050"
- 11 N43°16'26.91154" W76°56'44.64137"
- 12 N43°16'29.34557" W76°56'39.60362"
- 13 N43°16'31.87966" W76°56'34.99165"
- 14 N43°16'33.90231" W76°56'31.32131"

LNM: 14/24

LAKE ONTARIO - Oswego Harbor

From 13 Sep 2024 to 31 Oct 2024 Dean Marine and Excavating will be conducting breakwall repair in Oswego Harbor. Hours of operation are from 0630 to 1900 7 days a week. All mariners are requested to transit the area with caution.

LNM: 38/24

LAKE ERIE – OH - Ashtabula Harbor – Chart 14836

A submerged breakwater was constructed in Ashtabula harbor. It is connected to the existing East Breakwater. The submerged breakwater is connected to the East Breakwater at the first angle point of the East Breakwater, as entering the harbor, from the lake. All elevations referenced are referred to Low Water Datum (LWD), IGLD 1985.

The center line of the submerged breakwater approximately follows the same azimuth as the first segment of the East Breakwater, in a south easterly direction, for approximately 1000', then slightly bends to the east for another two segments, for approximately 500'.

The first 1000' (Area "A") has a crest design height of -2.0' with a crest width of 9', and a footprint of approximately 150', with the next 100' transitioning to the dimensions in the next item.

The final 400' (Area "B") has a crest height of -5.0', with a crest width of 9', and a footprint of approximately 50'.

The coordinates, in decimal degrees, are as follows:

1. 41.918447801N 80.790362308W
2. 41.916367139N 80.788014301W
3. 41.916189406N 80.787730327W
4. 41.916026216N 80.787424318W
5. 41.915640784N 80.786454826W
6. 41.916242815N 80.783904852W

All mariners are requested to transit the area with caution.

LNM: 17/23

LAKE ERIE – Cleveland Harbor – Chart 14839

Submerged obstructions were reported and confirmed in location 41° 29.380' N, 081° 41.906' W (NAD83) on the Cuyahoga river's left descending bank just east of the Columbus Road Bridge. The USACE completed a hydrological survey on 07 December 2023, which identified four obstructions on the river's bottom believed to be sections of steel corrugated bulkhead originating from a nearby retaining wall. The failed sections settled at the bottom of the river approximately 20 feet into the navigational channel and were measured to be between 18-21 feet from the water's surface. Marines may contact the Sector Eastern Great Lakes Command Center with any questions by phone at 716-843-9596. The most current USACE Hydrographic Survey data can be found on their website here: Buffalo District Maps and Charts (army.mil). All mariners are requested to transit the area with extreme caution.

LNM: 51/23

LAKE ERIE - Cleveland

There will be a towed 34-foot by 34-foot promotional floating inflatable couch on certain navigable waters of the Cuyahoga River, the Cleveland outer harbor, and Lake Erie in Cleveland, Ohio on Saturday, September 28, 2024. The route will be a continuous and repeating circuit on the Cuyahoga River, Eastern Cleveland outer harbor (inside the breakwater), and Lake Erie to the West of the Cleveland Harbor main channel entrance. The circuit will be in the vicinity of the following landmarks:

- (1) Riverfront Yacht Sales and Service on the Cuyahoga River
- (2) The Brew Dog Cleveland Outpost on the Cuyahoga River
- (3) The East Ninth Street pier on the Cleveland outer harbor
- (4) The Rocky River entrance on Lake Erie in Rocky River, Ohio

The route will be adjusted within the circuit as necessary to accommodate vessel traffic and other conditions such as bridge operations. This safety notice will be in effect on September 28, 2024, from 10:00 a.m. to 6:00 p.m. All mariners are advised to exercise caution when transiting the area.

LNM: 37/24

LAKE ERIE- Rocky River

Shoaling has been reported at the mouth of the Rocky River and throughout its entirety, exceeding 5 feet above low water datum inside the main channel. Of major note, the turning basin located at the mouth of the river on the west bank measures in areas at less than one foot. The latest U.S. Army Corps of Engineers hydrological survey can be found online via links above. All mariners are requested to transit the area with caution.

LNM: 08/24

LAKE ERIE - Lorain Harbor

From 10 Aug 2024 to 15 Oct 2024 Dean Marine and Excavating will be conducting dredging operations in Lorain. Hours of operation are 24 hours a day 7 days a week. Anne Marie and West Wind can be contacted on VHF channels 13, 16 and 79. All mariners are requested to transit the area with caution.

LNM: 30/24

LAKE ERIE - Vermilion River

From 12 Aug 2024 to 3 Nov 2024 Michels Construction will be performing Diving Inspection and Sheet Pile wall construction in the Vermilion River between Erie Lagoon and Vermilion Municipal docks, along the shores of Wakefield MetroPark. Operations will be 10 hours a day, 6 days a week. All mariners are requested to transit the area with caution.

LNM: 32/24

LAKE ERIE - Port Clinton

From 01 Sep 2024 to 01 Oct 2024 GEO. Gradel will be dredging in Port Clinton OH. Hours of operation are from 0700 to 1900 Monday through Saturday. Tug Prairieland can be contacted on VHF channels 7, 10, and 16. All mariners are requested to transit the area with caution.

LNM: 35/24

LAKE ERIE – Maumee River

From 08 Jan 2024 to 31 Oct 2025 Mark Haynes Construction will be conducting island restoration of the Clark and Delaware/Horseshoe islands on the Maumee River near river mile 9. Hours of operation are from 0700 to 1700 Monday to Thursday. Two temporary causeways are constructed between the shore and islands that block the side channel at the following locations.

1. Immediately downstream of the Maumee River Yacht Club.
2. Walbridge Park Boat launch.

Boaters entering the river should follow alternate routes marked by temporary buoys. For more information, please visit:
<https://www.toledoport.org/projects/clark-and-delawarehorseshoe-islands-restoration-projects/>

LNM: 08/24

LAKE ERIE - Monroe

From 01 July 2024 to 01 Oct 2024 Dean Marine and Excavating will be dredging in Monroe MI. Hours of operation are 24 hours a day 7 days a week. Tug West Wind and Dredge Louise can be contacted on VHF channels 16 and 79. All mariners are requested to transit the area with caution.

LNM: 26/24

DETROIT RIVER – Belle Isle Intake

From 15 Apr 2024 to 15 Oct 2024 Dean Marine and Excavating will be conducting shoreline rehabilitation near the intake point Belle Isle. Hours of operation are from 0600 to 1900 7 days a week. Vessels can be contacted on VHF channels 16 and 79. All mariners are requested to transit the area with caution.

LNM: 14/24

DETROIT RIVER - Rouge River

From 24 Apr 2024 to 15 Sep 2024 Great Lakes Dock and Materials will be conducting mechanical dredging and capping in the Lower Rouge River. Hours of operation 12 Hours a day Monday thru Saturday. Barge Jacqueln, Tug Duluth and Tug Tracy Lynn can be contacted on VHF channels 16 and 18. All mariners are requested to transit the area with caution.

LNM: 17/24

LAKE HURON - Bay City

From 5 Sep 2024 to 15 November 24 Ryba Marine will be conducting maintenance dredging in the Saginaw River. Hours of operation are 24 hours a day 7 days a week. Tug Kathy Lynn can be contacted on VHF channels 13 and 16. All mariners are requested to transit the area with caution.

LNM: 35/24

ST. MARYS RIVER – Neebish Channel

From 01 May 2024 to 01 Sep 2024 Roen Salvage Company will be conducting maintenance dredging in the Middle Neebish and West Neebish channels. Hours of operation are 24 hours a day 7 days a week. Tug David R Schanock can be contacted on VHF channels 7, 12 and 16. All mariners are requested to transit the area with caution.

LNM: 18/24

ST. MARYS RIVER - Sault Ste, Marie, Ontario

The city of Sault Sainte Marie, Ontario in coordination with the bush plane museum will be hoisting an aerial demonstration on Saturday September 21 from 1-3 P.M. and Sunday September 22 from 12-2 P.M. in the vicinity of the City of Sault Sainte Marie, Ontario Canada waterfront.

LNM: 37/24

STRAITS OF MACKINAC

From 01 May 2024 to 01 October 2024 Kokosing Industrial Inc will be conducting stone laying over exposed sections of the new American Transmission Company 138V submarine power cables installed in 2021. Hours of operation are 24 hours a day 7 days a week. Tugs Nancy Anne, Champion, General, WM. Boyd, Shirley Ann and crew boat Timmy V can be contacted on VHF channels 13 and 16. All mariners are requested to maintain 500 yards away from survey vessels and to transit the area with caution.

LNM: 18/24

STRAITS OF MACKINAC

The Gray and Pape will be conducting an archaeological diver investigation of unidentified lake bottom targets in the Straits of Mackinac Restricted Navigation Area on behalf of Enbridge Energy 5 Sep 2024 – 25 Sep 2024. A small Remotely Operated Vehicle, the vessel Karen J, and scientific divers will be utilized. The Karen J and associated divers can be contacted on VHF channels 13 and 16. All mariners are requested to maintain 500 yards away from survey vessels and to transit the area with caution.

LNM: 34/24

LAKE MICHIGAN - Traverse City

Michigan Technical Institute will be operating an autonomous surface vessel in the vicinity of the Great Lakes Maritime Academy. The * meter long vessel will have a chase boat on scene maintaining direct visual supervision during operation. Questions or concerns can be directed to TRAVIS WHITE, MICHIGAN TECHNICAL INSTITUTE RESEARCH ENGINEER, 906-748-1353.

LNM: 37/24

LAKE MICHIGAN - Grand Traverse Harbor Channel

There is significant shoaling in the Grand Traverse Harbor Channel between Grand Traverse Harbor LT 2(LLNR 151300) and Grand Traverse Harbor LT 3(LLNR15135). Depths around 2.5' spanning the width of the channel. All mariners are requested to transit the area with caution.

LNM: 37/24

LAKE MICHIGAN – New Buffalo Harbor - Chart 14905

Shoaling has been reported near the middle of the channel immediately inside the break wall in New Buffalo Harbor, MI. The actual water depth is currently significantly below the charted depth. Mariners are urged to use caution when transiting the area. For further details, contact Sector Lake Michigan at (414) 747-7182 or VHF channel 16.

LNM: 15/22

LAKE MICHIGAN – Port Sheldon – Chart 14932

Shoaling has been reported near Pigeon Lake at the Port Sheldon entrance. The actual water depth is currently significantly below the charted depth. Mariners are urged to use caution when transiting the area. For further details, contact Sector Lake Michigan at (414) 747-7182 or VHF channel 16.

LNM: 15/23

LAKE MICHIGAN - Manistee

Shoaling has been reported in Lake Manistee in position 44-15.41N, 086-18.76W. All mariners are requested to transit the area with caution. For further details, contact Sector Lake Michigan at (414) 747-7182 or VHF channel 16.

LNM: 15/24

LAKE MICHIGAN - Saugatuck

From 5 June 2024 to 31 Aug 2024 the King Company Inc will be conducting hydraulic dredging in the outer channel of Saugatuck MI. Hours of operation are 24 hours a day 7 days a week. Dredge Barry J can be contacted on VHF channels 16, 18 and 73. Submerged dredge pipe will be lying on the lake floor, marked by orange round buoys every 500 feet. (2) white buoys will be seen North and South of the dredge. The white buoys indicate winch anchor locations. The disposal area starts south of the pier 4,900' and runs for an additional 1,600' south. The primary contact will be the Superintendent Robert Lister. His cell number is listed below. During rough seas, our pipe pontoon will be floating outside of the channel. It is bright yellow, 25'x8'x6' and has (2) flashing lights on each end that come on at night.

LNM: 23/24

LAKE MICHIGAN – Muskegon Channel – Chart 14906

The Coast Guard has received reports that the depths at the entrance to Muskegon Lake are less than the charted depths. All mariners are requested to transit the area with caution.

LNM: 17/23

LAKE MICHIGAN - Holland Inner

From 01 Oct 2024 to 30 Nov 2024 the King Company will be dredging the Holland Inner Harbor. Hours of operation are 24 hours a day 7 days a

LAKE MICHIGAN - Holland Inner

week. Submerged dredge pipe will lie on the lake floor, marked by orange round buoys every 500 feet. (2) white buoys will be seen North and South of the dredge. The white buoys indicate winch anchor locations. The disposal is in the city's CDF upriver from the federal channel. The primary contact will be the Superintendent Joseph Martin. His cell number is listed below. During rough seas, our pipe pontoon will be floating outside of the channel. It is bright yellow, 25'x8'x6' and has (2) flashing lights on each end that come on at night. From N. River Ave. Bridge to the west, a floating pipe will be utilized to make it upriver to the placement area. This pipe will also be marked every 500' with orange buoys.

LNM: 38/24

LAKE MICHIGAN - Gary Indiana

From 5 June 2024 to 30 Oct 2024 Geodynamics, an NV5 Company will be conducting hydrographic survey in support of nautical chart updates. The survey area has nearshore work off Gary, In, Michigan City, In, ~4-8 nmi work off Highland Park, IL, and further offshore work ~9-20 nmi offshore of Chicago, IL. Surveys will be conducted 24 hours a day, 7 days a week, on the RV Substantial and 12 hours a day, 7 days a week on the RV Benthos. The RV Benthos is a 30 ft Armstrong aluminum catamaran survey vessel operating multibeam sonar. Provide 1/2 nautical mile distance when possible. Mariners are urged to transit at their slowest safe speed in the vicinity of the survey vessels to minimize wake. All survey vessels have AIS and will monitor VHF channels 16/13.

LNM: 22/24

LAKE MICHIGAN – Whihala Beach

Whoazone has established a waterborne obstacle course at the Whihala Beach that will be in operation from 10 June 2024 to 25 August 2024. It is requested that all traffic remain outside the designated area and transit the area with caution. Contact Sector Lake Michigan at (414) 747-7182 or Whoazone general manager at (219)234-2615.

LNM: 16/24

LAKE MICHIGAN - Indiana Harbor Canal

There is an obstruction on the south side of the Federal channel at the Indiana Harbor Canal in East Chicago, Indiana at the location of the former Canal St. bridge.

LNM: 16/24

LAKE MICHIGAN - Indiana Harbor Canal

From 3 Sep 2024 to 15 Dec 2024 Roen Salvage will be conducting dredging. Hours of operation are 24 hours a day 7 days a week. Tug David R. Schanock can be contacted on Vhf channels 7 and 16. All mariners are requested to transit the area with caution.

LNM: 35/24

LAKE MICHIGAN – Sheboygan River – Chart 14922

Shoaling has been reported in entrance of the Sheboygan River in the vicinity of 43-44.928N, 087-42.170W AND 43-44.936N, 087-42.110W. The actual water depth is currently significantly below the charted depth. Mariners are urged to use caution when transiting the area. For further details, contact Sector Lake Michigan at (414) 747-7182 or VHF channel 16.

LNM: 24/22

LAKE MICHIGAN - Kenosha

From 15 July 2024 to 31 Aug 2024 Great Lakes Dock and Material will be conducting breakwater repair in Kenosha Harbor. Hours of operation are 24 hours a day 7 days a week. Vessels onscene can be contacted on VHF channels 16 and 18. All mariners are requested to transit the area with caution.

LNM: 28/24

Lake Michigan - Milwaukee River

From 5 Aug 2024 to 5 Nov 2024 Coleman Engineering will be conducting sediment sampling and borings in the Milwaukee River from North Ave Dam south confluence, Menominee River east to confluence, KK River from W. Becher St east and North to confluence, and Inner/Outer Harbor. Hours of operation are from 0700 to 1800 Monday thru Friday. All mariners are requested to transit the area with caution.

LNM: 31/24

LAKE MICHIGAN - Milwaukee

From 01 Aug 2024 to 31 Dec 2024 Great Lakes Dock and Material will be conducting South Shore breakwater repair. Hours of operation are 24 hours a day 7 days a week. Barge Justin Avery, Tug George F. Bailey and Tug Fischer Hayden can be contacted on VHF channels 16 and 18. Mariners should use extreme caution when transiting the area and maintain 25ft from equipment and work area. (4) danger buoys will outline the work area on the landside of the existing breakwater. Do Not Enter Work Area. Please have positive contact with equipment, marine equipment will be located near the south shore breakwater – North Section in Lake Michigan. The work areas are directly east of South Shore Yacht Club. Equipment includes crane barge, excavators, material barges and tug boats.

LNM: 35/24

LAKE MICHIGAN - Green Bay

From 3 Sep 2024 to 31 Oct 2024 the King Company will be conducting hydraulic dredging in Green Bay Channel. Hours of operation are 24 hours a day 7 days a week. Dredge BuxtonII can be contacted on VHF channels 16, 18, and 73. Submerged dredge pipe will lie on the lake floor, marked by orange round buoys every 500 feet. (2) white buoys will be seen North and South of the dredge. The white buoys indicate winch anchor locations. The disposal is in the East Cell of Cat Island. The primary contact will be the Superintendent Joseph Martin. His cell number is listed below. During rough seas, our pipe pontoon will be floating outside of the channel. It is bright yellow, 25'x8'x6' and has (2) flashing lights on each end that come on at night.

LNM: 35/24

LAKE MICHIGAN

SAILDRONE, INC. is conducting fisheries research with two Uncrewed Surface Vehicles (USVs), called "SAILDRONE Explorers" in Lake Superior for the period of time from August 22 through 15 October 2024. SAILDRONE Explorers are 23 ft in length, 16 ft tall, orange in color, have a white all around

LAKE MICHIGAN

light on top of the wing, and are marked "SAILDRONE". Saildrone vehicles are uncrewed, 23 feet long and 16 feet above the waterline. The vehicles are wind propelled and solar powered with limited maneuverability during survey operations. All mariners are requested to maintain 500 meters distance from research vessels and to transit the area with caution. Questions can be directed to Julia Paxton phone: 510-722-6070, email: missioncontrol@saildrone.com.

LNM: 35/24

LAKE SUPERIOR – Little Lake Harbor – Chart 14961

Shoaling has been reported in the entrance of Little Lake Harbor exceeding 5 feet above low water datum near the channel edges. Some cross sections of the channel are shoaled nearly the full width to 2 feet or more above low datum. The harbor should not be considered as a functional harbor or refuge. All mariners are requested to transit the area with caution.

LNM: 47/22

Lake Superior - Marquette MI

Shoaling has been reported at the south pier of the LS&I Iron Ore facility in Marquette MI. The actual water depth is currently significantly below the charted water depth. All mariners are requested to use caution when transiting the area.

LNM: 31/24

LAKE SUPERIOR - Ontonagon

From 5 Sept 2024 to 07 Oct 2024 Viking Marine will be conducting hydraulic dredging in Ontonagon, Michigan Harbor. Hours of operation are 24 hours a day 7 days a week. Please contact the dredge operator on station 78 if necessary. The pipeline route will be from the inner harbor running to the north side beach. There will be approximately 4,500' of pipeline. The pipeline will be marked every 500' with bright orange buoys. The disposal site will consist of a raised piece of plastic pipe placed on a yellow pontoon tank. The pontoon tank will have 4 orange flashing lights during night operations. We encourage ALL boaters to stay at least 250' away from the yellow disposal pontoon. Please do not go near the pontoon. There will be pipeline inside the channel. Please proceed with caution.

LNM: 37/24

LAKE SUPERIOR - Cornucopia Wisconsin Harbor

From 18 Aug 2024 to 05 Sept 2024 Viking marine will be conducting hydraulic dredging. Please contact the dredge operator on station 78 if necessary. The pipeline route will be from the inner harbor running to the north side beach. There will be approximately 4,500' of pipeline. The pipeline will be marked every 500' with bright orange buoys. The disposal site will consist of a raised piece of plastic pipe placed on a yellow pontoon tank. The pontoon tank will have 4 orange flashing lights during night operations. We encourage ALL boaters to stay at least 250' away from the yellow disposal pontoon. Please do not go near the pontoon. There will be pipeline inside the channel. Please proceed with caution.

LNM: 34/24

LAKE SUPERIOR - Keweenaw

Survey work is to be conducted within approximately 10 miles of shore along the western Keweenaw Peninsula between the Keweenaw Waterway Upper Entrance and Ontonagon, MI from September 09, 2024 through September 13, 2024. A 25' x 7' autonomous surface vessel will be operating at speeds between 4-8 knots during daylight hours. Mariners are advised to transit the area with caution. A crewed vessel overseeing the work will be in the same general vicinity and can be reached on VHF Channel 16 or by phone at (906) 748-1353; secondary contact number (906) 370-7466.

LNM: 35/24

LAKE SUPERIOR - Duluth/Superior Harbor

From 05 Aug 2024 to 05 Sept 2024 J.F. Brennan Company will bedredging in the Duluth/Superior Harbor. Hours of operation 24 hours a day Monday through Friday. M/V Glenn Green can be contacted on VHF channels 13 and 16. All mariners are requested to transit the area with caution.

LNM: 32/24

SECTION VIII - LIGHT LIST CORRECTIONS

An Asterisk *, indicates the column in which a correction has been made to new information

(1) No.	(2) Name and Location	(3) Position	(4) Characteristic	(5) Height	(6) Range	(7) Structure	(8) Remarks
1525	<i>St. Lawrence Seaway Lighted Buoy 224</i>	44-15-00.534N 076-05-10.919W	Fl R 4s			Red.	Year Round Lighted Buoy 38/24 Aid maintained by GLS Aid maintained by S.L.S.D.C.
1545	<i>St. Lawrence Seaway Lighted Buoy 225</i> Marks shoal.	44-14-33.434N 076-06-03.419W	Fl G 4s			Green.	* Year Round Lighted Buoy 38/24 Aid maintained by GLS Aid maintained by S.L.S.D.C.
1555	<i>St. Lawrence Seaway Lighted Buoy 226A</i>	44-14-40.834N 076-06-04.219W	Fl R 4s			Red.	* Year Round Lighted Buoy 38/24 Aid maintained by GLS Aid maintained by S.L.S.D.C. *

SECTION VIII - LIGHT LIST CORRECTIONS (Continued)

(1) No.	(2) Name and Location	(3) Position	(4) Characteristic	(5) Height	(6) Range	(7) Structure	(8) Remarks	
1565	St. Lawrence Seaway Buoy 228 Marks shoal.	44-14-31.634N 076-07-03.519W	Fl R 4s			Red nun.	Year Round Lighted Buoy Aid maintained by GLS Aid maintained by S.L.S.D.C. *	38/24
1615	St. Lawrence Seaway Lighted Buoy 233 Marks north side of shoal.	44-12-02.634N 076-13-36.819W	Fl G 4s			Green.	Year Round Lighted Buoy Aid maintained by GLS Aid maintained by S.L.S.D.C. *	38/24
1625	St. Lawrence Seaway Lighted Buoy 234	44-12-12.534N 076-15-03.219W	Fl R 4s			Red.	Year Round Lighted Buoy Aid maintained by GLS Aid maintained by S.L.S.D.C. *	38/24
1630	St. Lawrence Seaway Lighted Buoy 235	44-11-40.134N 076-17-55.719W	Q G			Green.	Year Round Lighted Buoy Aid maintained by GLS Aid maintained by S.L.S.D.C. *	38/24
1640	St. Lawrence Seaway Lighted Buoy 237	44-11-20.834N 076-18-28.019W	Fl G 4s			Green.	Year Round Lighted Buoy Aid maintained by GLS Aid maintained by S.L.S.D.C. *	38/24
1645	St. Lawrence Seaway Lighted Buoy 236	44-11-21.234N 076-19-06.219W	Fl R 4s			Red.	Year Round Lighted Buoy Aid maintained by GLS Aid maintained by S.L.S.D.C. *	38/24
2141.1	Blind Sodus Bay Breakwater Barrier Danger Buoy 1	43-20-27.550N 076-44-02.680W	Fl Y 4s				Maintained from Apr.1 to Nov.30. Private Aid. *	38/24
*	*	*	*	*	*	*	*	*
2141.11	Blind Sodus Bay Breakwater Barrier Danger Buoy 10	43-20-38.320N 076-43-37.440W	Fl Y 4s				Private Aid. *	38/24
*	*	*	*	*	*	*	*	*
2141.2	Blind Sodus Bay Breakwater Barrier Danger Buoy 2	43-20-29.420N 076-44-00.630W	Fl Y 4s				Maintained from Apr.1 to Nov.30. Private Aid. *	38/24
*	*	*	*	*	*	*	*	*
2141.3	Blind Sodus Bay Breakwater Barrier Danger Buoy 3	43-20-31.170N 076-43-58.400W	Fl Y 4s				Maintained from Apr.1 to Nov.30. Private Aid. *	38/24
*	*	*	*	*	*	*	*	*
2141.4	Blind Sodus Bay Breakwater Barrier Danger Buoy 4	43-20-32.990N 076-43-56.370W	Fl Y 4s				Maintained from Apr.1 to Nov.30. Private Aid. *	38/24
*	*	*	*	*	*	*	*	*
2141.5	Blind Sodus Bay Breakwater Barrier Danger Buoy 5	43-20-34.730N 076-43-54.230W	Fl Y 4s				Maintained from Apr.1 to Nov.30. Private Aid. *	38/24
*	*	*	*	*	*	*	*	*

SECTION VIII - LIGHT LIST CORRECTIONS (Continued)

(1) No.	(2) Name and Location	(3) Position	(4) Characteristic	(5) Height	(6) Range	(7) Structure	(8) Remarks	
2141.6	<i>Blind Sodus Bay Breakwater Barrier Danger Buoy 6</i>	43-20-36.990N 076-43-51.050W	Fl (2)W 6s				Private Aid.	38/24
*	*	*	*	*	*	*	*	
2141.7	<i>Blind Sodus Bay Breakwater Barrier Danger Buoy 7</i>	43-20-39.130N 076-43-47.720W	Fl Y 4s				Maintained from Apr.1 to Nov.30. Private Aid.	38/24
*	*	*	*	*	*	*	*	
2141.8	<i>Blind Sodus Bay Breakwater Barrier Danger Buoy 8</i>	43-20-38.300N 076-43-42.680W	Fl Y 4s				Maintained from Apr.1 to Nov.30. Private Aid.	38/24
*	*	*	*	*	*	*	*	
2141.9	<i>Blind Sodus Bay Breakwater Barrier Danger Buoy 9</i>	43-20-38.310N 076-43-40.060W	Fl Y 4s				Maintained from Apr.1 to Nov.30. Private Aid.	38/24
*	*	*	*	*	*	*	*	
5515	Gem Beach Access Channel Daybeacon 6	41-33-45.623N 082-49-24.119W				TR on pile.		38/24
6885	Detroit River Light	42-00-02.978N 083-08-28.509W	Fl (2)W 6s	55 17	12	White conical tower with black top on hexagonal top.	RACON: X (- . . -) HORN: 1 blast ev 30s (3s bl). Operates by keying microphone five times on VHF-FM Ch. 83A.	38/24
7625	Hickory Island Channel Buoy 17	42-06-22.522N 083-07-58.001W				Green can.	*	38/24
14765	* KEWEENAW WATERWAY LOWER ENTRANCE LIGHT	* 46-58-07.896N 088-25-51.906W	Fl W 6s (NIGHT)	68 21	9	White octagonal tower on concrete pierhead.	Standby light of reduced intensity. HORN: 1 blast ev 30s (3s bl). Operates by keying microphone five times on VHF-FM Ch. 83A.	38/24
14795	Keweenaw Waterway Daybeacon 7	46-58-59.973N 088-26-10.446W				SG on skeleton tower.		38/24
14800	Keweenaw Waterway Daybeacon 9	46-59-19.813N 088-26-11.621W				SG on skeleton tower.		38/24
14810	KEWEENAW WATERWAY LIGHT 11 Marks northwest end of Middle Ground.	* 46-59-24.016N 088-26-09.570W	Fl G 2.5s (NIGHT)	14 4	4	SG on white pile.		38/24
14815	KEWEENAW WATERWAY LIGHT 13	* 46-59-31.737N 088-26-09.918W	Q G (NIGHT)	14 4	4	SG on white pile.		38/24
		*						

SECTION VIII - LIGHT LIST CORRECTIONS (Continued)

(1) No.	(2) Name and Location	(3) Position	(4) Characteristic	(5) Height	(6) Range	(7) Structure	(8) Remarks
14830	KEWEENAW WATERWAY LIGHT 15	46-59-43.424N 088-26-17.144W	Fl G 2.5s (NIGHT)	14 4	4	SG on white pile.	38/24
		*					
14835	KEWEENAW WATERWAY LIGHT 17	47-00-07.666N 088-26-51.103W	Fl G 2.5s (NIGHT)	14 4	4	SG on white pile.	38/24
		*					
14845	KEWEENAW WATERWAY LIGHT 19	47-00-40.823N 088-27-37.628W	Fl G 2.5s (NIGHT)	14 4	4	SG on post.	38/24
		*					
15100	LILY POND NORTH LIGHT 70	47-13-00.708N 088-37-09.330W	Q R (NIGHT)	25 8	5	TR on post.	38/24
		*					
15105	KEWEENAW UPPER ENTRANCE EAST REVTMENT LIGHT 72	47-13-35.766N 088-37-32.946W	Fl R 4s (NIGHT)	25 8	5	TR on post.	38/24
		*					
15110	KEWEENAW UPPER ENTRANCE WEST REVTMENT LIGHT	47-13-34.026N 088-37-38.220W	Fl G 4s (NIGHT)	25 8	5	SG on post.	38/24
		*					
15585	CORNUCOPIA EAST PIER LIGHT	46-51-34.998N 091-06-17.232W	Fl G 2.5s (NIGHT)	29 9	9	SG on post.	38/24
		*					
15590	PORT WING EAST PIER LIGHT	46-47-34.608N 091-23-10.740W	Fl G 4s (NIGHT)	27 8	5	SG on post.	38/24
		*					
16977	<i>Oak Island Lighted Buoy 2</i>	49-18-28.000N 094-49-30.000W	Fl R 4s			Red nun.	38/24
		*					
	*	*	*				

ENCLOSURES

(1) LNM Section I - Special Notices

1-Great Lakes Water Levels

LNM: 06/22

(2) LNM Section II - Discrepancies

N/A

LNM: 19/19

(3) LNM Section III - Temporary Changes and Temporary Changes Corrected

N/A		LNM: 19/19
	(4) LNM Section IV - Chart Corrections	
N/A		LNM: 19/19
	(5) LNM Section V - Advance Notices	
N/A		LNM: 19/19
	(6) LNM Section VI - Proposed Changes	
N/A		LNM: 19/19
	(7) LNM Section VII - General	
	1-Marine Events	
	2-Current Ninth District Bridge Maintenance/Activities	
	3-Waterway Analysis and Management System Survey	LNM: 19/19
	(8) LNM Section VIII - Light List Corrections	
N/A		LNM: 19/19

J. P. Hickey, RADM
U. S. Coast Guard
Commander, Ninth Coast Guard District

Notice: Changes to the USCG Local Notice to Mariners (LNM) and Light Lists

The U.S. Coast Guard Navigation Center announces upcoming changes to the Local Notice to Mariners (LNM) and the Light List, as part of our efforts to modernize and improve the accessibility, accuracy, and overall user experience for mariners and other stakeholders.

What Is Changing?

- 1. Transition From Paper Charts:** In January 2025, NOAA will discontinue the production of all paper charts. In alignment with this change, the Coast Guard will transition from using NOAA Paper Chart Numbers and Editions/Dates for disseminating Marine Safety Information (MSI) to using Official Waterway Names.
- 2. How You Will Access LNMs and Light Lists:** The LNM and Light List data will now be available in a geospatial format, which will allow you to visualize information interactively on a map/chart. You can use your mouse wheel or the +/- buttons in the upper left portion of the screen to zoom in or out and navigate to your desired area on the map/chart. Once the area is displayed, you can generate a PDF of the LNM or Light List for that specific area, which you can then save and/or print. Alternatively, you can use a fillable form on our website to select your waterway by name from the Light List and generate the LNM or Light List.
- 3. LNM and Light List Data Refresh Rate:** LNM data will be refreshed every fifteen minutes. Light List data will be refreshed every 24 hours. This will give you a much more up-to-date operating picture, designed to enhance your efficiency and improve safety in your area of transit or planned routes.
- 4. Elimination of Weekly Files:** Weekly LNMs, Weekly Light List Correction Files, Daily Discrepancy Files, and the Summary of Light List Changes will no longer be published to focus on providing the most up-to-date and accessible format. In the near future, we will also publish an Application Programming Interface (API) for interested parties to access the data externally.

Why Are These Changes Being Made?

The modernization of MSI delivery is designed to improve the U.S. Coast Guard's aid-to-navigation data management and dissemination capabilities. By providing frequent updates, geospatial visualization, and digital access, we hope to achieve our goals of:

- **Enhancing Maritime Safety:** By delivering the most current and precise information, mariners can make better-informed decisions, reducing the risk of accidents and ensuring safer navigation.
- **Improving Accessibility:** The shift to geospatial visualization makes it easier for all users, from commercial mariners to recreational boaters, to stay informed.
- **Increasing Efficiency:** The integration of LNM and Light List data into a geospatial format to simplify the gathering of safety information and facilitate easy route planning.

When Will These Changes Take Effect?

The transition to the modernized LNM and Light List platform (the Navigation Center website) will be completed by Monday, September 30th.

How to Access the New Features?

Starting on September 30th, 2024, you will be able to access the updated LNM and Light List through the NAVCEN website. A User Guide will be available on the NAVCEN website. Customers will still have the ability to download legacy versions of these products until October 21st.

For any questions or assistance, please visit our [Contact Us Page](#), select 'LNMs or Light Lists' from the Subject dropdown, and submit your inquiry.

Thank you for your continued support as we work to improve the safety and efficiency of maritime navigation.

U.S. Coast Guard Navigation Center (www.navcen.uscg.gov)

GREAT LAKES, CONNECTING CHANNELS AND ST. LAWRENCE RIVER WATER LEVELS AND DEPTHS

Expected water levels on the Great Lakes, Connecting Channels and the St. Lawrence River are given in inches above (+,0) or below (-,0) Low-Water Datum (LWD,0). LWD is a plane of reference on a navigation chart, also known as Chart Datum. LWD elevations shown below are given in International Great Lakes Datum, 1985 (IGLD 1985,0).

	Forecast Point	Low Water Datum IGLD 1985	Expected Levels (inches above or below Low Water Datum,0)				
			Current	Week 1	Week 2	Week 3	Week 4
			13-Sep	20-Sep	27-Sep	4-Oct	11-Oct
GREAT LAKES							
Lake Ontario		243.3	26	24	23	22	20
Lake Erie		569.2	37	36	35	33	32
Lake St. Clair		572.3	36	34	34	32	31
Lake Michigan-Huron		577.5	21	20	20	19	18
Lake Superior		601.1	8	8	8	7	7
ST. LAWRENCE RIVER							
Above Long Sault Dam	0	237.9	33	31	30	29	27
Above Iroquois Dam	1	240.3	23	21	20	19	17
Ogdensburg	2	242.4	24	22	20	19	17
Alexandria Bay	2.1	243.0	25	24	22	21	19
Head of river at Cape Vincent	3	243.3	26	24	23	22	20
DETROIT RIVER							
Lake Erie at Pelee Passage	4	569.2	37	36	35	33	32
Mouth of River at Gibraltar	5	569.5	41	40	39	38	36
Fort Wayne	5.1	571.1	39	38	37	36	35
Head of River above Belle Isle	6	572.0	36	35	34	33	32
ST. CLAIR RIVER							
Mouth of River at St. Clair Flats	7	572.3	36	34	34	32	31
Algonac	8	572.8	38	37	36	35	33
St. Clair	9	574.4	30	29	28	28	27
Blue Water Bridge	10	576.2	28	27	27	26	25
Head of River at Fort Gratiot	11	577.2	24	23	22	21	20
Lake Huron Approach Channel	12	577.5	21	20	20	19	18
ST. MARYS RIVER							
Mouth of River at Detour	13	577.5	21	20	20	19	18
West and Middle Neebish	14	577.8	19	18	17	16	16
Head of Little Rapids	15	578.4	18	17	16	15	14
U.S. Slip	16	578.7	16	15	15	14	13
Above Locks	17	600.4	11	11	10	10	9
Head of River at Point Iroquois	18	601.1	8	8	8	7	7

UNDERSTANDING THE FORECAST

Available water depth is determined for a location by adding (if+) or subtracting (if-) the amount from the above table to the appropriate channel depth shown in the profile Connecting Channel Depths Graphic or to water depths shown on National Oceanic and Atmospheric Administration (NOAA) navigational charts.

CAUTION

Depths so determined are representative of a still water surface elevation, disturbed by neither wind nor other causes. Depths, however, may be reduced or increased as much as several feet for short periods due to these disturbances, or when sections of channels develop shoals. Vessel masters should refer to "Local Notice to Mariners" for extent of shoaling and scattered bedrock projections in all channels. Ice conditions can have a dramatic impact on actual channel depth and can lead to large short-term water level fluctuations. Ice information can be found at the National Ice Center's website.

FOR FURTHER INFORMATION CONTACT:

Detroit District Corps of Engineers
477 Michigan Avenue
Detroit MI, 48226
1-888-694-8318 ex. 1
email: hphm@usace.army.mil

FOR MORE INFORMATION VISIT:

[Detroit District Great Lakes Homepage](#)
[International Joint Commission](#)
[Great Lakes Information Network](#)
[NOAA Tides and Currents](#)
[U.S. Coast Guard - District 9](#)

WATER LEVEL INFORMATION SUPPLIED BY:

NOAA, National Ocean Service
SSMC4, STATION 7523
1305 East-West Hwy
Silver Spring, MD 20910-3233
(301) 713-2902

GREAT LAKES-MARINE EVENT-SAFETY ZONES-SECURITY ZONES

Events listed below are those events that may have accompanying special local regulations.

<u>Location</u>	<u>Name of Event</u>	<u>Date / Time</u>	<u>POC</u>	<u>Tel #</u>
Morristown, NY.	Brockville Yacht Club	15 May - 15 Oct	1730-2030	Jason VanBlitterswyk 613-342-4155
Onieda Lake in Sylv	Boat Parade (Chicken Wing Run)	9/21/2024	0900-2100	Ryan Hall (315) 271-4745

LAKE ONTARIO

Sodus Bay, NY	Breakwater Barrier Construction Project outside Sodus	1 Aug- 31 Oct	0700-2000	Glen Roet 315-564-6784
Rochester, NY	RYC 2024 High School Sailing Program	13 Mar-10 Nov	various	Peter Mendick 585-342-5511
Rochester, NY	Genesee Yacht Club Saturday Morning Racing	25 May - 5 Oct	1000-1300	Kenny Fourspring 814-746-2183
Rochester, NY	RYC 2024 One Design and Offshore Racing Series	14 May - 14 Oct	various	Peter Mendick 585-342-5511
Rochester, NY	Head of Genessee Regatta	12OCT24-16OCT24	0600-1800	Liana Spencer 585-967-8683

LAKE ERIE

Buffalo, NY	Head of the Niagara	13-Oct-24	0700-1400	Ian Suchan 716-604-5156
Cleveland, OH	28th Annual Head of the Cuyahoga Regatta	21-Sep-24	0500-1700	Jen Forbes (216)308-4183
Cleveland, OH	28th Annual Head of the Cuyahoga Regatta	21 September 2024	4:30 a.m. - 5:30 p.m	Jenifer Forbes 216-308-4183
Cleveland, OH	Dragon Boat Festival	21 September 2024	6:30 a.m. - 4:30 p.m	Janet Leopold 440-371-9436

LAKE ST. CLAIR/St. Clair River

LAKE MICHIGAN & Green Bay

LAKE SUPERIOR

N/A



DNR
MICHIGAN DEPARTMENT OF NATURAL RESOURCES

INTEROFFICE COMMUNICATION

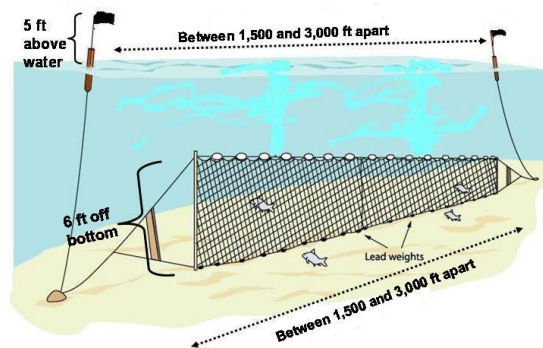
04 September 2024

TO: Natural resource agency personnel and mariners operating on Lake Superior

FROM: Shawn P. Sitar, Fisheries Research Biologist, Marquette Fisheries Research Station, Fisheries Division

SUBJECT: R/V Lake Char operations offshore at Klondike Reef, Lake Superior 22- 27 September 2024

This is a note to inform you that we will be conducting a lake trout gill net survey aboard the Research Vessel *Lake Char* at Klondike Reef (SW of Caribou Island), Lake Superior starting 22 September and should finish by 27 September. We will be setting bottom set gill nets that are 1,200-1,500 ft long, extend about 6 feet from the bottom and are set overnight. Our sampling stations are generally less than 300 deep at the reef complex. Our nets are marked with black and orange flagged staff buoys that are labeled with our agency identification.



Attached are the cruise schedule, map, and sampling station coordinates for this lake trout survey. Note that weather conditions may delay the sampling dates. Please provide copies of this cruise schedule to all pertinent personnel. Please note that we can be reached via MIDNR 800 MHz Radios on our primary radio channel on Zone B, FIMARQT, or via marine radio

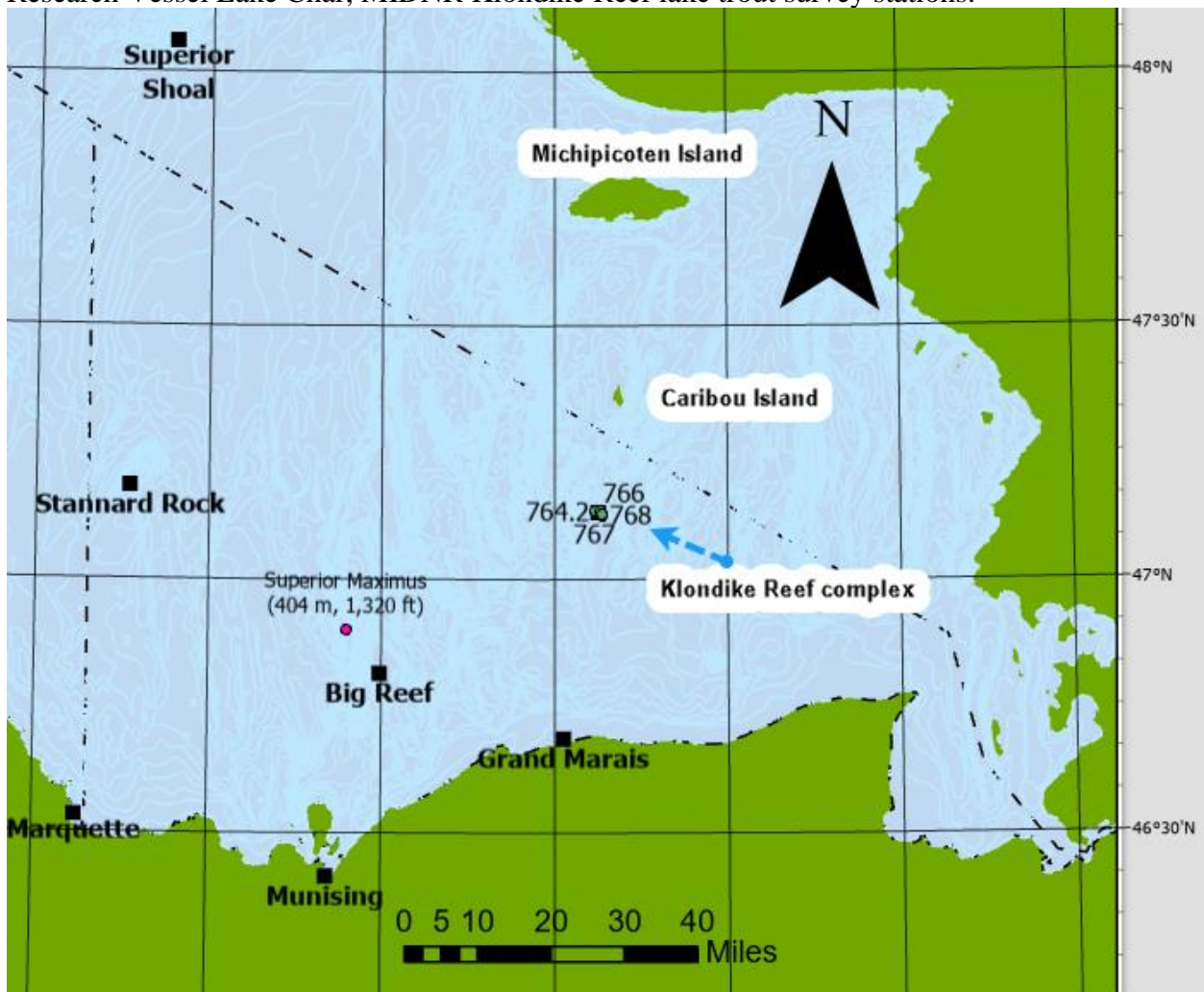
channel 16. Our radio call sign is *R/V Lake Char*. We can also be reached on the vessel via cell phone number 906-458-6925.

If you have any questions regarding our sampling schedule, please feel free to contact me by e-mail at sitars@michigan.gov or by cell phone at (906)-235-1581. Thank you for your cooperation.

2024 Klondike Reef lake trout survey schedule for Marquette Fisheries Research Station (MFRS), Fisheries Division, Michigan Department of Natural Resources.

MIDNR-R/V Lake Char 2024 Klondike Reef lake trout survey station positions.						
Dates		Station_no	site	latitude	longitude	
09/22 -	09/27/2024	764.1	Klondike Reef Usfws N (2023)	47° 7.74 ' N	85° 52.1 ' W	
09/22 -	09/27/2024	764.2	Klondike Reef USFWS S (2023)	47° 7.92 ' N	85° 52.12 ' W	
09/22 -	09/27/2024	765	Dawson's shoal	47° 8.08 ' N	85° 52.61 ' W	
09/22 -	09/27/2024	766	London Shoal	47° 8.12 ' N	85° 51.89 ' W	
09/22 -	09/27/2024	767	Yukon Reef	47° 7.55 ' N	85° 51.34 ' W	
09/22 -	09/27/2024	768	The Skagway	47° 7.79 ' N	85° 51.62 ' W	

Research Vessel Lake Char, MIDNR Klondike Reef lake trout survey stations.





Marine Safety Information Bulletin

Commander
Ninth Coast Guard District
Prevention Division
1240 E. 9th Street
Cleveland, OH 44199

MSIB Number: 003-24
Date: August 23, 2024
Contact: LCDR Jason Radcliffe
Phone: (206) 820-3336
Email: jason.a.radcliffe2@uscg.mil

Autonomous Unmanned Watercraft on the Great Lakes

The Ninth Coast Guard District is issuing this Marine Safety Information Bulletin to bring awareness to autonomous unmanned vessels operating on the Great Lakes.

The Great Lakes provides an ideal environment for unmanned autonomous vessels to conduct a myriad of scientific and research missions. Federal and State agencies, educational institutions, and technology developers are utilizing autonomous unmanned vessels to, for example, identify toxic algae blooms near drinking water intakes, monitor fish populations, and chart navigable channel depths.

While these vessels may provide useful service contributions, their increasing presence and diversity of form, shape, and function brings an added layer of complexity for other vessels navigating on the Great Lakes. Below are some suggested precautions that all mariners, vessel owners and operators should consider while planning an outing or transit.

Stay Informed: Research vessel deployment and operations are communicated to the U.S. Coast Guard and are advertised to the public via:



Broadcast Notice to Mariners (BNM) on VHF Channel 16.

BNM textual format:

<https://www.navcen.uscg.gov/broadcast-notice-to-mariners>

Ninth District ***Local Notice to Mariners*** (LNM):

<https://www.navcen.uscg.gov/local-notice-to-mariners-main>

Subscribe to receive BNM's and/or LNM's weekly to your email:

<https://www.navcen.uscg.gov/subscribe-email-rss-feeds>

Maintain Navigational Awareness: These vessels operate on the surface, underwater, or both and each vessel differs drastically in autonomy, anti-collision capability, and maneuverability. The safest approach is to regard these as hazards to navigation and once sighted- make all possible attempts to keep clear.

To aid mariners in sighting and avoidance, the common identifiers of autonomous unmanned watercraft(s) include the following vessel characteristics:

- A flashing white or yellow light
- Retro-reflective markings
- Markings that identify craft as UNMANNED
- Yellow or Orange paint scheme
- Radar reflector and/or Automatic Identification System (AIS)

If you have any questions concerning this matter, please contact Lieutenant Commander Jason Radcliffe at (206) 820-3336.



RESEARCH EQUIPMENT IN WATER

Lake Superior Region
August 22nd to October 15th, 2024

SAILDRONE, INC. will operate two Uncrewed Surface Vehicles called “Saildrones” in collaboration with the United States Geologic Survey’s (USGS) Great Lakes Science Center (GLSC) to study fish populations in Lake Superior waters. Two vehicles will be launched from the vicinity of Washburn, WI on or after August 22nd and transit through all areas of Lake Superior including Thunder Bay and Black Bay. Both vehicles will be recovered in mid-Oct. 2024.

VESSELS ARE REQUESTED TO TRANSIT THE AREA WITH CAUTION, AND REMAIN GREATER THAN 500 METERS AWAY FROM THE RESEARCH EQUIPMENT.

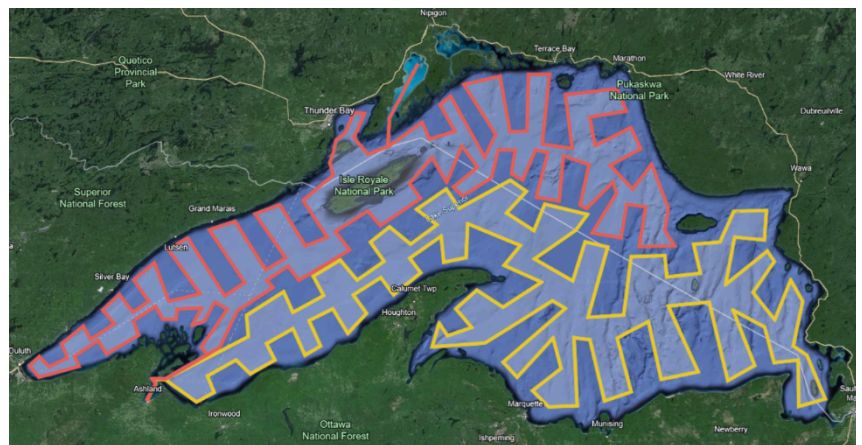
Saildrones are wind-propelled Uncrewed Surface Vehicles that carry important oceanographic research instrumentation. USVs are controlled from shore via satellite communications and monitored 24/7 by Saildrone Mission Control.

- **Color: Orange**
- **Light: white all-round light**
- **Radar Reflector: Yes**
- **Notation: “SAILDRONE”**
- **Height: 16 ft above water line**
- **Length: 23 ft; Width: 3 ft**
- **Draft: 6 ft, Avg. speed: 2.5 kts**
- **GPS / AIS / Cameras: Yes**

Saildrone Explorer Class USV



Approximate planned Lake Superior coverage for the two USVs.



SAILDRONE MISSION CONTROL

(510) 722-6070

missioncontrol@saildrone.com

SCIENCE CONTACTS

Pete Esselman

pesselman@usgs.gov

mobile: 734-546-5698

Dan Yule

dyule@usgs.gov

Research Vessel Kiyi

mobile: 715-209-6468

RESEARCH EQUIPMENT IN WATER

Lake Superior

August 1 to August 12, 2024

Monterey Bay Aquarium Research Institute (MBARI) and US Geological Survey (USGS) will operate one Autonomous Underwater Vehicle to study fish populations in Lake Superior waters. The vehicle will be launched from Munising, MI on August 1 and will traverse offshore transects throughout the survey area. The vehicle will be recovered on or around August 12.

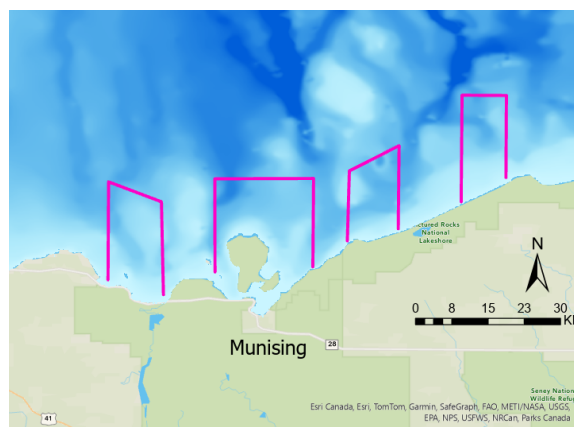
VESSELS ARE REQUESTED TO TRANSIT THE AREA WITH CAUTION AND REMAIN GREATER THAN 200 METERS AWAY FROM THE RESEARCH EQUIPMENT IF SPOTTED.

The autonomous underwater vehicle is battery powered, carries important fisheries acoustic research instrumentation, and is controlled from shore and monitored 24/7 through satellite/cellular communications. It remains underwater while moving but comes to the surface periodically to communicate with shore.

Color: Orange & yellow
Light: Red light on mast;
Reflective tape on hull
Radar Reflector: No
Notation: "MBARI"
Length: 10 ft & **Width:** 1 ft



Height: 10 inches above water line
Draft: N/A **Avg. speed:** 2 kts
GPS / AIS / Cameras: No
AIS identifiers: N/A



Lake Superior transect locations.

USGS CONTACT

Peter Esselman pesselman@usgs.gov
Mobile: (734) 546-5698

MBARI CONTACT

Brian Kieft bkieft@mbari.org
Mobile: (831) 334-7658

CURRENT NINTH DISTRICT BRIDGE MAINTENANCE/ACTIVITIES

Local Notice to Mariner Week [38/24]

Note: Short-term bridge maintenance closures and various activities may only be published [through Broadcast Notice to Mariners*](#) and may not be included [in the Local Notice to Mariners*](#). Mariners should both *listen* to Broadcast Notice to Mariners (BNM) and *read* Coast Guard Local Notice to Mariners (LNM) available by clicking [HERE](#) for the most recent and complete marine information.

* [Broadcast Notice to Mariners issued on VHF-FM Marine Channels 16 & 22 \[Subscribe Here\]](#)

* [Local Notice to Mariners \[Subscribe Here\]](#)

To [Subscribe to Bridge Maintenance & Activities Summary email click here.](#)

There is a Microsoft Teams meeting with the US Coast Guard, Mariners, and Bridge Owners being held on the last Wednesday of every month at 1300 ET, and **YOU** are welcome to join in. **Join on your computer or mobile app.** [Click here to join the meeting](#) **Or call in (audio only) +1 410-874-6742,,515305017#** Phone Conference ID: 515 305 017#

PUBLIC NOTICES FOR 9th District BRIDGES: <https://www.navcen.uscg.gov/D9BN>

Please contact us with any questions or concerns:

Blair Stanifer (216) 902-6086 or William.B.Stanifer@uscg.mil
Lee Soule (216) 902-6085 or Lee.D.Soule@uscg.mil
Michael Walker (216) 902-6087 or Michael.O.Walker2@uscg.mil
FAX: (216) 902-6088

Commander (dpb)
Ninth Coast Guard District
1240 E. 9th St. Room 2047B
Cleveland, Ohio 44199-2001

FEDERAL REGULATIONS DOCKET STATUS

[Regulations.gov](#) enter the USCG - docket number in the search window to review all comments and documents associated with the project.

USCG-2023-0185 - FR – Sandusky Bay – to Command for Approval
USCG-2024-0018 - FR -Cherry Street Bridge, Milwaukee River – Pending Legal Review
USCG-2024-0407 - TD - Manitowoc, WI – Pending Legal Review

GREAT LAKES REGION

GREAT LAKES, Drawbridge Delay Reports, Chart 14500

Mariners are requested to submit Reports of Drawbridge Signal/Operations Delays directly to the Ninth Coast Guard District Bridge Branch using the attached form. Reports of signal or drawbridge delays have been processed by Coast Guard Marine Safety Offices in recent years but will now be processed and traced by the Bridge Branch. Reports may be sent by mail, e-mail, or by fax. The mailing address and fax number are on the form.

[08/05] [34/12]

GREAT LAKES, Drawbridge Civil Monetary Penalty Adjustments for Inflation, Chart 14500

DHS adjusts for inflation its civil monetary penalties for 2024, in accordance with the Federal Civil Penalties Inflation Adjustment Act Improvements Act of 2015 and Executive Office of the President (EOP) Office of Management and Budget (OMB) guidance. DHS is also accounting for additional civil monetary penalties that the U.S. Coast Guard is statutorily authorized to collect. The new penalty amounts will be effective for penalties assessed after June 28, 2024 whose associated violations occurred after November 2, 2015.

The Coast Guard is authorized to assess nearly 150 penalties involving maritime safety and security and environmental stewardship that are critical to the continued success of Coast Guard missions. Various statutes in titles 14, 16, 19, 33, 42, 46, and 49 of the U.S.C. authorize these penalties. Titles 33 and 46 authorize the vast majority of these penalties as these statutes deal with navigation, navigable waters, and shipping. For a more detailed discussion of the civil monetary penalties assessed by the Coast Guard, see the 2016 IFR preamble at [81 FR 42992](#). To view the full document, visit 89 FR 53849. **Bridges: New penalty is \$53,516.00 (for each violation, per day, and/or per vessel).**

ST. LAWRENCE SEAWAY

NY STATE CANAL SYSTEM

(Everything West of St. Johnsville, NY)

NY - NEW YORK STATE CANAL SYSTEM - Erie Canal – Chart 14786

From March 15, 2024, through **January 31, 2025**, daily, contractors will utilize scaffolding and man lifts above low steel of the E144C I-390 Bridge at mile 258.65 and the E144D I-390 Bridge at mile 258.68 over the Erie Canal.

[42/23]

NY - NEW YORK STATE CANAL SYSTEM - Erie Canal – Chart 14786

From June 10, through **November 8, 2024**, between the hours of 0600 and 2100, daily, a 30-foot Harcon will be inspecting all bridges from E101 Leach Road Bridge at Mile 221.01 to E211 County Road 5 Bridge at Mile 304.13 over the Erie Canal. The Harcon will monitor VHF-FM marine Channel 16 and will move to accommodate vessels if a 30-minute advance notice is provided.

[17/24]

NY - NEW YORK STATE CANAL SYSTEM - Cayuga – Seneca Canal – Chart 14786

From July 7, through **September 30, 2024**, scaffolding that hangs approximately 6-feet below low steel will be installed under one half of the S6, Ovid Street Bridge at Mile 8.65, over the Cayuga – Seneca Canal.

[18/24]

NY - NEW YORK STATE CANAL SYSTEM – Erie Canal, Cayuga – Seneca Canal, and Oswego Canal, Chart 14876

From May 20 through **September 27, 2024**, between the hours of 0730 and 1700, Monday through Friday a 35-foot Harcon will be inspecting the bridges between the E-64 Brewerton Road Bridge at Mile 150.85 and the E-92 Armitage Road Bridge at Mile 205.59 over the Erie Canal, including the S1 US 20 Bridge at Mile 2.97 to the S10 Gorham Street, Mile 11.71, over the Cayuga-Seneca Canal, and the O05 Humansville Road Bridge, over the Oswego Canal. The Harcon will move with a 30-minute advance notice. Mariners should provide advance notice on VHF -FM Marine Channel 16.

[18/24]

NY - NEW YORK STATE CANAL SYSTEM - Erie Canal – Chart 14786

From September 29, 2024, through **October 1, 2024**, inspectors will install scaffolding under the E-101 Leach Road Bridge at Mile 221.01 over the Erie Canal that extends approximately 6-feet below low steel under one

half of the bridge.

[21/24]

NY - NEW YORK STATE CANAL SYSTEM - Erie Canal – Chart 14786

From July 8, 2024, through **November 30, 2024**, scaffolding will be installed under the E-234 Transit Road Bridge at Mile 320.97 over the Erie Canal that hangs approximately 3-feet below low steel.

[24/24]

NY - NEW YORK STATE CANAL SYSTEM - Erie Canal – Chart 14786

From March 1, 2025, through **June 30, 2025**, scaffolding will be installed under the E-234 Transit Road Bridge at Mile 320.97 over the Erie Canal that hangs approximately 3-feet below low steel.

[24/24]

NY- NEW YORK STATE CANAL SYSTEM - Erie Canal – Chart 14786

The U. S. Coast Guard is requesting mariner and public input regarding the proposed construction of the Route 34 Bridge, Bridge E-83, across Mile 188.87 of the Erie Canal near the towns of Brutus and Cato in Cayuga County, New York. The proposed replacement bridge would have a vertical clearance of 25.64-feet throughout the entire width of the navigation channel and a horizontal clearance of 261.00-feet bank-to-bank with the center 154.00-feet designated as the navigation channel. All elevations are based upon Low Water Datum (LWD), elevation 374.00-feet, Barge Canal Datum (BCD), and referenced to elevation 337.55-feet, BCD. Additionally, temporary cofferdams would be placed in the waterway to facilitate the proposed removal of the existing structure and construction of the permanent replacement structure. These cofferdams, however, are not expected to interfere with the navigation channel. The complete Public Notice including a map of the location, and plans for the proposed bridge can be viewed and printed from the U.S. Coast Guard Navigation Center's web site at <https://www.navcen.uscg.gov/public-notice-for-bridges-active-by-district?district=9&subdistrict=n> or by calling, emailing or mailing a request to the Coast Guard project manager, Mr. Michael Walker, Commander (dpb), Ninth Coast Guard District, 1240 E. 9th St., Room 2047, Cleveland, OH 44199, (216) 902-6087, or michael.o.walker2@uscg.mil. Comments received will be made part of the case record until **October 4, 2024**.

[36/24]

NY- NEW YORK STATE CANAL SYSTEM - Erie Canal – Chart 14786

From September 16 through **September 20, 2024**, between the hours of 0700 and 1500 daily, a 30-foot by 48-foot barge will be inspecting the E233 Main Street Bridge at Mile 320.82 over the Erie Canal. The barge will move if provided a 30-minute advance notice on VHF-FM Marine channel 16.

[37/24]

LAKE ONTARIO

NY - LAKE ERIE – Rochester Harbor – Chart 14815

On **September 15, 2024**, between the hours of 0745 and 0930, the O'Rourke Bridge at Mile 1.25 over the Genesee River will be secured to masthead navigation in conjunction with the Rochester Marathon. Vessels able to pass under the bridge without an opening may do so at any time.

[16/24] +

LAKE ERIE - MAHONING RIVER - NIAGARA RIVER- ALLEGHENY RIVER

NY - LAKE ERIE – Buffalo Harbor – Chart 14833

From January 1 through **March 31, 2025**, the Canadian National International Railroad Bridge at mile 3.8 over the Black Rock Canal will be secured to masted navigation for maintenance. Vessels able to pass under the bridge without an opening may do so at any time.

[30/23] +

NY - LAKE ERIE – Niagara River – Chart 14833

From August 28, 2023, through **July 26, 2026**, scaffolding that extends approximately 3-feet below low steel will be installed under the South Grand Island Bridge at Mile 3.40 and the North Grand Island Bridge at Mile 18, both over the Niagara River. A 16-foot by 32-foot materials barge and a 4-foot by 40-foot temporary dock will be used under the bridges.

[32/23] +

OH - LAKE ERIE – Cleveland Harbor – Chart 14839

From June 1, 2024, through **September 30, 2026**, daily scaffolding will be installed under the I-490 Bridge at mile 4.79 over the Cuyahoga River that hangs approximately 4-feet below low steel. Snooper vehicles and manlifts will be used. Spotters will warn workers of approaching vessels and move the manlift to allow vessels to pass.

[43/23] +

NY - LAKE ERIE – Niagara River – Chart 14833

From June 15 through **September 30, 2024**, between the hours of 0700 and 1600, Monday through Friday. A 100-foot by 34-foot barge will be washing the South Grand Island Bridge at Mile 3.40 and the North Grand Island Bridge at Mile 18, both over the Niagara River. Mariners should avoid passing under clean falling water. The barge will monitor VHF-FM Marine Channel 16 and will make passing arrangements with vessels as needed.

[16/24] +

OH - LAKE ERIE – Toledo Harbor – Chart 14847

On **September 15, 2024**, between the hours of 1000 and 1130, the Martin Luther King Jr. Memorial Bridge at Mile 4.30 over the Maumee River will be secured to masted navigation in conjunction with the ProMedica Be Fast Event. Vessels able to pass under the bridge without an opening may do so at any time.

[21/24] +

OH - LAKE ERIE – Cleveland Harbor – Chart 14839

On **October 5, 2024**, between the hours of 0700 and 1400, the Carter Road Bridge at Mile 2.43 over the Cuyahoga River will be secured to masted navigation in conjunction with the Towpath Marathon. Vessels able to pass under the bridge without an opening may do so at any time.

[23/24] +

OH - LAKE ERIE – Toledo Harbor – Chart 14847

From July 17, 2024, through **March 31, 2025**, a 60-foot by 60-foot barge will be working at the Martin Luther King Jr. Memorial Bridge at Mile 4.30 over the Maumee River. The barge will move to accommodate larger vessels if provided a 3-hour advance notice directly to the barge on VHF-FM Marine Channel 16. Additionally, from December 1, 2024, through March 31, 2025, scaffolding/containment will be installed that hangs approximately 3-feet below low steel of the bridge bascule spans; however, the scaffolding will allow the bridge to operate normally.

[29/24]

*****REVISED*****

OH - LAKE ERIE – Toledo Harbor – Chart 14847

From August 14 through **November 30, 2024**, between the hours of 0700 and 1600, Monday through Friday a 30-foot by 90-foot barge will be working at the Martin Luther King Jr. Memorial Bridge at Mile 4.30 over the Maumee River. The barge will monitor VHF-FM Marine Channel 16 and passing arrangements can be made

directly with the Great Lakes Concrete Restoration Barge.

[33/24] [34/24]

OH - LAKE ERIE – Cleveland Harbor – Chart 14839

From January 20 through **March 15, 2025**, the Eagle Avenue Bridge at Mile 2.80 over the Cuyahoga River will be secured to masted navigation and a 180-foot by 52-foot barge will be positioned under the drawspan to facilitate the removal of the bridge. Vessels able to pass under the bridge without an opening and around the barge may do so at any time.

[36/24]

OH - LAKE ERIE – Toledo Harbor – Chart 14847

From September 16 through **October 18, 2024**, between the hours of 0700 and 1630, Monday through Friday, the Martin Luther King Jr. Memorial Bridge at Mile 4.30 over the Maumee River will require a 2-hour advance notice for openings while inspectors rebalance the bridge. Mariners should provide advance notice directly to the drawtender.

[37/24]

DETROIT RIVER - LAKE ST. CLAIR - ST. CLAIR RIVER – RIVER ROUGE

*****REVISED*****

MI - DETROIT RIVER – Main Channel – Chart 14848

From November 1, 2022, through **December 1, 2024**, contractors will be constructing the Gordie Howe International Bridge at mile 16.7 over the Detroit River. No equipment will be placed in the water. Overhead work will have temporary steady burning yellow lights to mark new construction. A moving platform with quick flashing red lights and orange or red ball fenders on the bottom four corners with a safety net that hangs approximately 15-feet below low steel will be constructing the bridge. Mariners should avoid passing directly under the platform at any time. Snooper type vehicles will be utilized on the bridge throughout construction. Spotters will warn of approaching vessels and move the man lift to allow vessels to pass. When construction is completed and all equipment removed, the final vertical clearances for the bridge will be 152-feet for the center 100-feet of the navigation channel. No less than 137-feet of vertical clearance will be available at the channel limits. Vertical clearances are based on IGLD85.

[47/20] [07/22] [02/24] [30/24]

NOTE: Over the water construction is basically complete and extensions to construction have been issued to accommodate demobilization of equipment.

MI – SAINT CLAIR RIVER – Chart 14852

From June 14, 2024, through **December 20, 2025**, scaffolding that hangs approximately 4-feet below low steel will be installed under the Blue Water Bridge at Mile 39.1 over the St. Clair River. Steady burning yellow lights will warn mariners of the temporary reduction in clearances.

[22/24]

MI - DETROIT RIVER – River Rouge – Chart 14854

From September 23 through **September 26, 2024**, between the hours of 0800 and 1800, daily, Inspectors will utilize a snooper truck under the Fort Street Bridge at Mile 2.20 over the River Rouge. The bridge will require a 15-minute advance notice on Monday and Friday and a 3-hour advance notice on Tuesday, Wednesday, and Thursday. Vessels should provide advance notice directly to the drawtender.

[37/24]

LAKE HURON

*****REVISED*****

MI - LAKE HURON – Saginaw River – Chart 14867

From April 19, through **November 30, 2024**, the Independence Street Bridge at Mile 3.88, over the Saginaw River will have two barges 80-foot by 40-foot or smaller working under the bridge. If needed the barges will

move with a 2-hour advance notice. Mariners should provide advance notice for the barges by calling 608-425-0171.

[17/23] [47/23] [17/24]

MI - LAKE HURON – Saginaw River – Chart 14867

From December 1, 2024, through **March 31, 2025**, the Independence Bridge, mile 3.88, over the Saginaw River will be secured to masted navigation. Vessels able to pass under the bridge without an opening may do so at any time. Two 80x40-foot barges will be working under the bridge, and they will move if a 2-hour advance notice is provided by calling 608-425-0171. During the winter the ice will be degraded due to the movement of barges and the ice under the bridge should be considered unsafe for pedestrians or vehicles.

[21/24]

MI - LAKE HURON – Saginaw River – Chart 14867

From December 1, 2024, through **March 31, 2025**, the Lafayette Street Bridge at Mile 6.78, over the Saginaw River will be secured to masted navigation. Vessels able to pass under the bridge without an opening may do so at any time. Additionally, starting on October 1, 2024, two 80x40-foot barges will be working under the bridge, and they will move if a 2-hour advance notice is provided by calling 608-425-0171. During the winter, the ice will be degraded due to the movement of barges and the ice under the bridge should be considered unsafe for pedestrians or vehicles.

[30/24]

*****REVISED*****

MI - LAKE HURON – Saginaw River – Chart 14867

From December 15, 2024, through **November 30, 2025**, a cofferdam will be installed at the the Lafayette Street Bridge at Mile 6.78, over the Saginaw River that measures approximately 60-feet by 95-feet, that reduces the navigation channel by 2-feet on either side leaving approximately 146-foot channel available for vessels. The red pier lights will be moved to the cofferdam sides to show the temporary reduction in horizontal clearance.

[33/24] [34/24]

SAINT MARY’S RIVER

LAKE MICHIGAN - EAST

MI - LAKE MICHIGAN – St Joseph River – Chart 14930

From December 16, 2024, Through **April 7, 2025**, and again from December 16, 2025, Through April 7, 2026, the Twin Cities Bicentennial Bridge at Mile 1.30, over the St. Joseph River, will be secured to masted navigation for maintenance. Vessels able to pass under the bridge without an opening may do so at any time.

[32/24]

LAKE MICHIGAN – MICHIGAN CITY & INDIANA HARBOR & GARY HARBOR

*****REVISED*****

IN - LAKE MICHIGAN – Michigan City – Chart 14927

On September 17, 2024, between the hours of 0800 to 1600, inspectors will utilize snooper trucks under the Franklin Street Bridge at Mile 0.50 over Trail Creek. Spotters will warn of approaching vessel and move the manlift to allow vessels to pass under the bridge. A 20-minute advance notice of arrival is required for bridge openings to allow inspectors to clear equipment from the bridge.

[31/24] [36/24]

*****REVISED*****

IN - LAKE MICHIGAN – Indiana Harbor Canal – Chart 14927

On September 17 and **September 18, 2024**, between the hours of 0800 to 1600, inspectors will utilize snooper trucks under the Dickey Road Bridge at Mile 1.21 and the Indianapolis Boulevard Bridge over the Indiana Harbor Canal. Spotters will warn of approaching vessel and move the manlift to allow vessels to pass under the bridge. A 20-minute advance notice of arrival is required for bridge openings to allow inspectors to clear equipment from the bridge.

[31/24] [36/24]

LAKE MICHIGAN – CALUMET RIVER & LITTLE CALUMET RIVER

*****REVISED*****

IL - LAKE MICHIGAN – Calumet Harbor – Chart 14927

From September 7, 2023, through **December 9, 2024**, scaffolding will be installed under the Indiana Avenue Bridge at Mile 10.80 (CORPS MILE 322.3) over the Little Calumet River that hangs approximately 1-foot below low steel. From September 6 through October 2, 2024, between the hours of 0600 and 1800, Monday through Saturday, a 120-foot by 30-foot barge will be removing the scaffolding from the bridge. The barge will move if provided a 1-hour advance notice of arrival on VHF-FM Marine Channel 16.

[34/23] [19/24] [37/24]

IL - LAKE MICHIGAN – Calumet Harbor – Chart 14927

The Coast Guard has received a report that the lights on the Norfolk Southern Railroad Bridge at Mile 12.49 over the Little Calumet River are extinguished.

[27/24]

*****REVISED*****

IL - LAKE MICHIGAN – Calumet Harbor – Chart 14927

From September 2 through **October 4, 2024**, between the hours of 0600 to 1800, Monday through Friday a 30-foot by 40-foot barge will be working at the following bridges repairing bridge fendering: 92nd Street Bridge at Mile 0.76 (CORPS MILE 332.5), the 95th Street Bridge at Mile 1.09 (CORPS MILE 332.1), the 100th Street Bridge at Mile 1.78 (CORPS MILE 331.4), and the 106th Street Bridge at Mile 2.58 (CORPS MILE 330.6) over the Calumet River. The barge will monitor VHF-FM Marine Channel 16 and will move with a 2-hour advance notice of arrival.

[34/24] [35/24]

IL - LAKE MICHIGAN – Calumet Harbor – Chart 14927

The Coast Guard has received a report that the lights on the Norfolk Southern Railroad Bridge at Mile 5.59 (CORPS MILE 327.6) over the Calumet River are malfunctioning when in the fully open position.

[37/24]

CHICAGO RIVER – MAIN RIVER CHANNEL, NORTH BRANCH, NORTH SHORE CHANNEL, AND SOUTH BRANCH AND SOUTH FORK OF SOUTH BRANCH

IL - LAKE MICHIGAN – Chicago Harbor – Chart 14927

From July 22 through **September 20, 2024**, between the hours of 0600 and 1800, Monday through Saturday a 30-foot Harcon will be inspecting the following groups of bridges in Chicago and Calumet Harbors: 95th Street Bridge at Mile 1.09 (CORPS MILE 332.1) to the Indiana Avenue Bridge at Mile 10.80 (CORPS MILE 322.3) over the Calumet and Little Calumet Rivers, the South Western Avenue Bridge at Mile 6.7

(CORPS MILE 320.6) and the South Cicero Avenue Bridge at Mile 10.0 (CORPS MILE 317.3) over the Chicago Sanitary and Ship Canal and All bridges over the Chicago River including all its branches.

[20/24]

CALUMET SAG CHANNEL

*****REVISED*****

IL - LAKE MICHIGAN – Calumet-SAG Channel – Chart 14927

From February 20, 2024, through **November 1, 2024**, scaffolding that hangs approximately 6-feet below low steel will be installed under one half of the 127th Street Bridge at Mile 18.81 (CORPS MILE 314.2) over the Calumet-SAG Channel. A 40-foot by 50-foot barge will be used at the bridge and will move if provided a 30-minute advance notice of arrival on VHF-FM marine Channel 16.

[03/24] [04/24] [10/24]

IL - LAKE MICHIGAN – Calumet-SAG Channel – Chart 14927

On September 12 and **September 13, 2024**, between the hours of 0900 and 1500 each day, inspectors will be using Snooper trucks under the Kedzie Avenue Bridge at Mile 16.01 (CORPS MILE 317.0) over the Calumet-SAG Channel. Spotters will warn of approaching vessels and move the man lift to allow vessels to pass.

[37/24]

CHICAGO SANITARY AND SHIP CANAL, KANKAKEE RIVER & ROCK RIVER

(Lake Michigan to Mile 36.2/291.1)

*****REVISED*****

IL - LAKE MICHIGAN – Chicago Sanitary and Ship Canal – Chart 14927

From September 13, through **August 31, 2025**, scaffolding will be installed that hangs approximately 3-feet below low steel of the South-Central Avenue Bridge at mile 11.1 (CORPS MILE 316.2) over the Chicago Sanitary and Ship Canal.

[03/24] [23/24] [38/24]

IL - LAKE MICHIGAN – Chicago Sanitary and Ship Canal – Chart 14927

From September 30 through **October 4, 2024**, between the hours of 0700 and 1800 each day, inspectors will utilize snooper trucks under the 9th Street Bridge at Mile 34.6 (CORPS MILE 292.7) over the Chicago Sanitary and Ship Canal. Spotters will warn of approaching vessels and move to allow vessels to pass.

[34/24]

LAKE MICHIGAN – WEST

*****REVISED*****

WI - LAKE MICHIGAN – Milwaukee Harbor – Chart 14924

From March 25 through **November 27, 2024**, between the hours of 0700 and 1700, Monday through Friday, two barges 70-feet by 50-feet or smaller will be painting the Holton Street Bridge, mile 2.84, over the Milwaukee River. Containment will hang from low steel of the bridge to the barge deck. The barges will move to accommodate vessels if a 2-hour advance notice is provided by calling 262-366-5121.

[11/24] [31/24]

*****REVISED*****

WI - LAKE MICHIGAN – Milwaukee Harbor – Chart 14924

From July 22, 2024, through **October 31, 2024**, one bridge leaf of the Cherry Street Bridge at Mile 2.29 over the Milwaukee River will be secured to masted navigation while the other bridge leaf operates normally for the passage of vessels. From November 1, 2024, through April 1, 2025, both leaves will be secured to masted

navigation. Vessels able to pass under the bridge without an opening may do so at any time. Between the hours of 0600 and 1700, Monday through Saturday, three barges, 60-foot by 80-foot or smaller will be working at the bridge, the barges will monitor VHF-FM Marine Channel 16 and move if a 3-hour advance notice is provided. Mariners may also provide advance notice by radio or by calling 312-735-1639.

[24/24] [29/24]

*****REVISED*****

WI - LAKE MICHIGAN – Milwaukee Harbor – Chart 14924

From September 16th through **September 23, 2024**, between the hours for 0700 and 1900, daily one leaf of the Kilbourn Avenue Bridge at Mile 1.70 over the Milwaukee River will be secured to masted navigation while a 40-foot by 40-foot barge works under that leaf to replace the center locks. The barge will move to accommodate larger vessels with a 3-hour advance notice provided directly to the barge on VHF-FM Marine Channel 16.

[36/24] [37/24]

*****REVISED*****

WI - LAKE MICHIGAN – Milwaukee Harbor – Chart 14924

From September 23 through **September 27, 2024**, between the hours for 0700 and 1900, daily one leaf of the North Sixth Street Bridge at Mile 1.37 over the Menomonee River will be secured to masted navigation while a 40-foot by 40-foot barge works under that leaf to replace the center locks. The barge will move to accommodate larger vessels with a 3-hour advance notice provided directly to the barge on VHF-FM Marine Channel 16.

[36/24] [37/24]

*****REVISED*****

WI - LAKE MICHIGAN – Milwaukee Harbor – Chart 14924

From September 30 through **October 4, 2024**, between the hours for 0700 and 1900, daily one leaf of the Kinnikinnic Avenue Bridge at Mile 1.67 over the Kinnikinnic River will be secured to masted navigation while a 40-foot by 40-foot barge works under that leaf to replace the center locks. The barge will move to accommodate larger vessels with a 3-hour advance notice provided directly to the barge on VHF-FM Marine Channel 16.

[36/24] [37/24]

[LAKE MICHIGAN – Sturgeon Bay Ship Canal – Green Bay – Fox River – Wolf River](#)

WI - LAKE MICHIGAN – Green Bay – Chart 14918

From December 1, 2026, through **March 31, 2027**, the Tilleman Memorial Bridge at mile 2.27 over the Fox River will be secured to masted navigation. Vessels able to pass under the bridge without an opening may do so at any time.

[49/23]

*****REVISED*****

WI - LAKE MICHIGAN – Fox River – Chart 14916

from October 8, 2026, through **April 8, 2027**, the Wisconsin Street Bridge at mile 56.72 over the Fox River will be secured to masted navigation and scaffolding that hangs approximately 4-feet will be installed under the bridge. Vessels able to pass under the bridge safely, without an opening may do so at any time.

[02/24] [03/24]

WI - LAKE MICHIGAN – Fox River – Chart 14918

From September 9, through **October 3, 2024**, between the hours of 0700 and 1700, every weekday, inspectors

will be using Snooper vehicles under the Tower Drive / Leo Frigo Bridge at mile 0.41 over the Fox River. Spotters will warn of approaching vessels and move the manlift to allow vessels to pass.

[27/24]

WI - LAKE MICHIGAN – Fox River – Chart 14918

On **September 28, 2024**, between the hours of 0800 and 1000 the Racine Street Bridge at Mile 37.91 over the Fox River will be secured to masted navigation in conjunction with the 44th Annual Grunski Runski. Vessels able to pass under the bridge without an opening may do so at any time.

[29/24]

WI - LAKE MICHIGAN – Sturgeon Bay Ship Canal – Chart 14919

From October 14 through **October 31, 2024**, between the hours of 0700 and 1600, Monday through Thursday, the Michigan Street Bridge at Mile 4.3 over the Sturgeon Bay Ship Canal will be secured to masted navigation due to maintenance. Vessels able to pass under the bridge without an opening may do so at any time. There will be an opening at noon each day for vessels waiting at the bridge.

[32/24]

LAKE SUPERIOR

WI - LAKE SUPERIOR – Duluth-Superior Harbor – Chart 14975

From June 1, 2025, through **October 1, 2025**, scaffolding will be installed that hangs approximately 10-feet below low steel of the bridge. Two 40-foot by 60-foot barges will be making repairs to the bridge piers, these barges will move as needed and can be contacted on VHF-FM Marine Channel 16.

[36/24]

RAINY LAKE, RAINY RIVER, LAKE OF THE WOODS, WISCONSIN RIVER, MISSISSIPPI RIVER, & RED RIVER OF THE NORTH

+ Denotes project entered in USAIMS

(Revised 04/23) NINTH DISTRICT DRAWBRIDGE SIGNALS OR OPERATIONAL DELAYS FORM

TO: Commander (dpb)
Ninth Coast Guard District
1240 E. 9th Street – Room 2047b
Cleveland, Ohio 44199-2060
Phone: (216) 902-6087
Fax: (216) 902-6088
E-Mail: William.B.Stanifer@uscg.mil, Lee.D.Soule@uscg.mil, and Michael.O.Walker2@uscg.mil

DATE: _____
NOTE: Reports of Delay will be processed only when all items are fully addressed and reports submitted within 15 days of reported delay / difficulty. Attach additional sheets if necessary.

CONFIDENTIALITY: Please check here if you wish to keep names of vessels and persons confidential

1. DATE OF DELAY: _____ 2. VESSEL NAME: _____ 3. INBOUND OUTBOUND

(***NOTE: You must provide the following from Coast Pilot 6.***)

4. BRIDGE NAME _____ 5. WATERWAY _____

6. MILE MARKER _____

7. WHAT TIME DID YOU ARRIVE AT THE BRIDGE? _____ 8. DID YOU SIGNAL FOR AN OPENING AT THAT TIME? Y N

9. HOW DID YOU SIGNAL? Sound signal (Whistle, horn, megaphone, hailer, etc.) _____

(Check all that apply) Visual signal (Flag or Light) _____

Radio telephone (Specify Frequency) _____

10. WHEN DID THE BRIDGE REPLY? _____ 11. WHAT DID THE DRAWTENDER SAY? _____

12. DID YOU COMMUNICATE WITH THE BRIDGE AFTER YOUR ARRIVAL? PLEASE PROVIDE DETAILS INCLUDING TIMES, WHAT YOU SAID, AND WHAT THE BRIDGE SAID? _____

13. WHAT TIME DID THE BRIDGE OPEN? _____ 14. WHAT TIME DID YOU START THROUGH? _____

15. WHAT TIME DID YOU CLEAR? _____ 16. WHAT ACTIONS DID YOU TAKE WHILE YOU WAITED FOR THE BRIDGE TO OPEN (e.g. tie up, hold position, use thrusters, return to dock)? _____

17. DESCRIBE ANY WEATHER OR WATER CONDITIONS THAT AFFECTED MANUEVERABILITY WHILE YOU WAITED? _____

18. DESCRIBE WHETHER ANY PEDESTRIANS, VEHICLES, OR TRAINS WERE STOPPED ON THE BRIDGE OR CROSSING THE BRIDGE? PROVIDE AS MUCH DETAIL AS POSSIBLE. _____

19. PROVIDE ANY ADDITIONAL INFORMATION YOU THINK WOULD BE HELPFUL? _____

20. YOUR NAME, E-MAIL, PHONE NUMBER, AND ADDRESS: _____

SIGNATURE OF REPORTING SOURCE



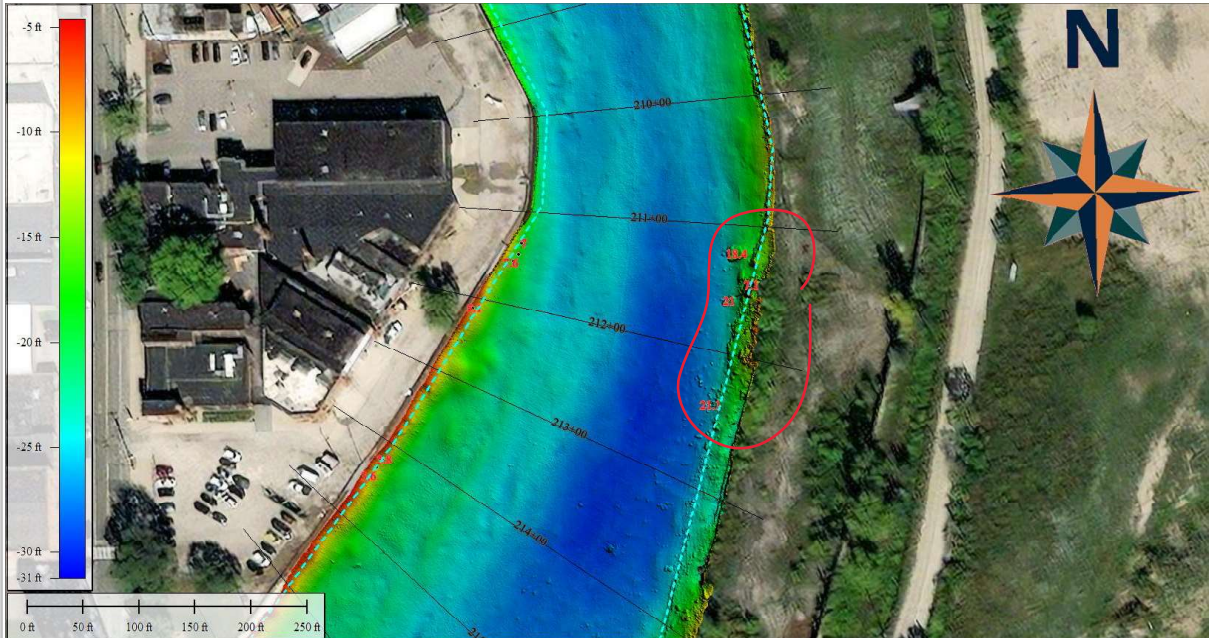
CHANNEL OBSTRUCTION REPORT

U.S. Army Corps of Engineers – Buffalo District

PROJECT NAME: Cuyahoga River
DATE OBSERVED: 12/07/2023
CREW: D. Banning, D. Bognar

OBJECT: Multiple unknown
LATITUDE: 41° 29' 23.1785" N
LONGITUDE: 81° 41' 54.1661" W

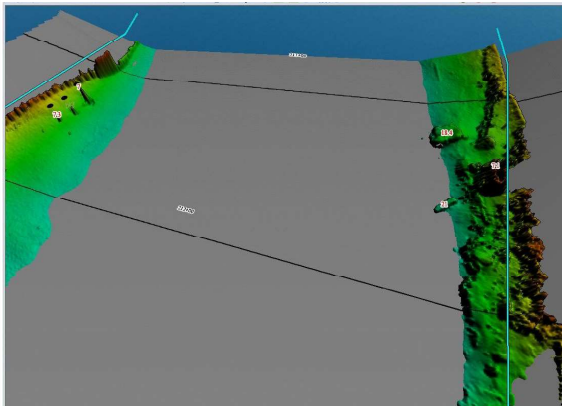
SURVEY DATA



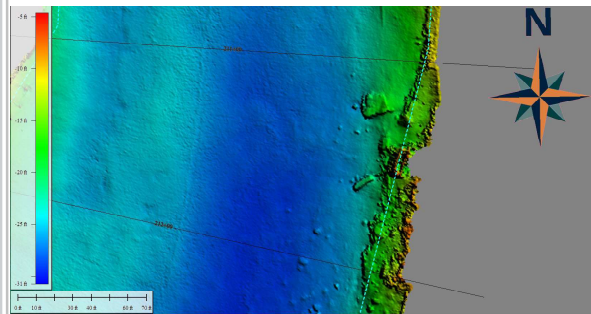
Multiple objects along easterly edge of Federal Channel between Sta. 211+00 & 213+00. Object Depths shown in red. Federal Channel shown in cyan.

View: NE down channel line

Hypack Channel View



3D view of channel bottom showing only areas that are shoaler than project depth of 23ft.



Close up view of area.

Waterway Analysis and Management System Survey

Name of Waterway: _____

User Information

___ Commercial User

___ Recreational User

Number of years in the maritime industry or number of years using this waterway: _____

Number of transits in the waterway per year: _____

Number of night transits of waterway: _____

Seasonal Dates: Start: _____ End: _____

Name of Vessel: _____

Vessel Description: _____

Length: _____ Beam: _____ Draft: _____ Gross Tons: _____

Net Tons: _____ Bridge Height of Eye: _____

Cargo Carried: _____

Navigational tools used: (ECDIS/ECPINS, GPS, DGPS, VISUAL, RADAR) _____

What area do you believe is the most dangerous or difficult to navigate: _____

Are the floating aids to navigation (lighted and unlighted buoys) adequate for this waterway:

Are the fixed aids to navigation (lights, ranges, lighthouses, daybeacons) adequate for this waterway: _____

Are the year round and lighted ice buoys adequate: _____

Are there buoys that you feel should be changed to fixed aids to navigation?

Are there any buoys that could be eliminated from this waterway: _____

Are there any buoys with sound signals that the bell or gong could be removed:

Are there any areas that require additional aids to navigation in this waterway:

Do the nautical charts, Coast Pilot, and Light List meet your needs for this waterway: _____

Are there private Aids to Navigation that you find misleading or interfere with the current system in the waterway:

Any addition comments on this waterway: _____

Thank you for taking time to comment on this waterway. Your input as a mariner very valuable to the U. S. Coast Guard in evaluating waterways to make them safe and as easily navigable as possible. Please feel free to contact D09-DG-District-D9-ATON-Support@uscg.mil with any other questions or concerns about any aids to navigation in the Great Lakes. The survey can be mailed to:

Commander (dpw-2)
Ninth Coast Guard District
1240 East Ninth Street
Cleveland, Ohio 44199
