



U.S. Department  
of Homeland Security  
**United States  
Coast Guard**

---

## LOCAL NOTICE TO MARINERS

**District: 9**

**Week: 35/23**

Issued by: Commander (dpw)  
Ninth Coast Guard District  
1240 East Ninth Street,  
Cleveland, OH 44199-2060  
Telephone: (216) 902-6069

Direct questions about this LNM to the above address.

All distances in this publication are STATUTE MILES unless otherwise noted.\*

\*District Nine Internet Address\* <https://www.atlanticarea.uscg.mil/Our-Organization/District-9/>

\*District Nine Local Notice to Mariners email Address\* [D09-DG-District-D9-LocalNoticetoMariners@uscg.mil](mailto:D09-DG-District-D9-LocalNoticetoMariners@uscg.mil)

\*\* Navigation Information Service watchstander, 24 hours a day at (703) 313-5900 \*\* \*\*Internet Address\*\* <https://www.navcen.uscg.gov/>

Light List Reference: Commandant Publication P16502.7, VOL VII, 2023 Edition

Coast Pilot Reference: 2022 U.S. Coast Pilot 6 Great Lakes 52nd Edition

Coast Pilots, along with corrections are available at: <https://nauticalcharts.noaa.gov/publications/coast-pilot/index.html>

The Local Notice to Mariners is available on the Internet at <https://www.navcen.uscg.gov/local-notices-to-mariners-by-cg-district> You will also have links to other government agencies- web pages including the US Army Corps of Engineers and the National Ocean Service.

### REPORT DISCREPANCIES IN AIDS TO NAVIGATION TO THE NEAREST COAST GUARD UNIT

The Ninth District and all Sector offices for their areas of responsibility issue a BROADCAST NOTICE TO MARINERS.

The following Broadcast Notice to Mariners have been incorporated into this week's Local Notice to Mariners:

Sector Buffalo, NY - B192-23 through B200-23

Ninth District - C133-23 through C134-23

Sector Detroit, MI - D103-22 through D111-23

Sector Lake Michigan, WI - M249-23 through M254-23

Sector Sault Ste Marie, MI - S081-23 through S086-23

The United States Coast Guard Navigation Information Service (NIS), operated by the USCG Navigation Center, is staffed 24 hours a day, 7 days a week. The NIS provides information on the current operational status, effective policies, and general information for GPS and DGPS. The

NIS also disseminates Safety Broadcasts (BNM), Local Notice to Mariners (LNM), and the latest Notice Advisory to Navstar Users (NANU). NANU notices can be obtained via email subscription through the USCG Navigation Center website: <https://cgl.uscg.mil/mailman/listinfo/nanu>. In addition, the NIS investigates all reports of degradation or loss of GPS, DGPS or AIS service. Users are encouraged to report all degradation or loss of radio navigation services to the NIS via any of the following: Phone: (703) 313-5900, mail to: [webmaster@smtp.navcen.uscg.mil](mailto:webmaster@smtp.navcen.uscg.mil), or on the internet at: <https://www.navcen.uscg.gov>

---

## ABBREVIATIONS

---

### A through H

ADRIFT - Buoy Adrift  
AICW - Atlantic Intracoastal Waterway  
AI - Alternating  
B - Buoy  
BKW - Breakwater  
bl - Blast  
BNM - Broadcast Notice to Mariner  
bu - Blue  
C - Canadian  
CHAN - Channel  
CGD - Coast Guard District  
C/O - Cut Off  
CONT - Contour  
CRK - Creek  
CONST - Construction  
DAYMK/Daymk - Daymark  
DBN/Dbn - Daybeacon  
DBD/DAYBD - Dayboard  
DEFAC - Defaced  
DEST - Destroyed

### I through O

I - Interrupted  
ICW - Intracoastal Waterway  
IMCH - Improper Characteristic  
INL - Inlet  
INOP - Not Operating  
INT - Intensity  
ISL - Islet  
Iso - Isophase  
kHz - Kilohertz  
LAT - Latitude  
LB - Lighted Buoy  
LBB - Lighted Bell Buoy  
LHB - Lighted Horn Buoy  
LGB - Lighted Gong Buoy  
LONG - Longitude  
LNM - Local Notice to Mariners  
LT - Light  
LT CONT - Light Continuous  
LTR - Letter  
LWB - Lighted Whistle Buoy

### P through Z

PRIV - Private Aid  
Q - Quick  
R - Red  
RACON - Radar Transponder Beacon  
Ra ref - Radar reflector  
RBN - Radio Beacon  
REBUILT - Aid Rebuilt  
RECOVERED - Aid Recovered  
RED - Red Buoy  
REFL - Reflective  
RRL - Range Rear Light  
RELIGHTED - Aid Relit  
RELOC - Relocated  
RESET ON STATION - Aid Reset on Station  
RFL - Range Front Light  
RIV - River  
RRASS - Remote Radio Activated Sound Signal  
s - seconds  
SEC - Section  
SHL - Shoaling

DISCON - Discontinued  
DMGD/DAMGD - Damaged  
ec - eclipse  
EST - Established Aid  
ev - every  
EVAL - Evaluation  
EXT - Extinguished  
F - Fixed  
fl - flash  
Fl - Flashing  
G - Green  
GIWW - Gulf Intracoastal Waterway  
HAZ - Hazard to Navigation  
HBR - Harbor  
HOR - Horizontal Clearance  
HT - Height

LWP - Left Watching Properly  
MHz - Megahertz  
MISS/MSNG - Missing  
Mo - Morse Code  
MRASS - Marine Radio Activated Sound Signal  
MSLD - Misleading  
N/C - Not Charted  
NGA - National Geospatial-Intelligence Agency  
NO/NUM - Number  
NOS - National Ocean Service  
NW - Notice Writer  
OBSCU - Obscured  
OBST - Obstruction  
OBSTR - Obstruction  
Oc - Occulting  
ODAS - Anchored Oceanographic Data Buoy

si - silent  
SIG - Signal  
SND - Sound  
SPM - Single Point Mooring Buoy  
SS - Sound Signal  
STA - Station  
STRUCT - Structure  
St M - Statute Mile  
TEMP - Temporary Aid Change  
TMK - Topmark  
TRLB - Temporarily Replaced by Lighted Buoy  
TRLT - Temporarily Replaced by Light  
TRUB - Temporarily Replaced by Unlighted Buoy  
USACE - Army Corps of Engineers  
W - White  
Y - Yellow

#### **Additional Abbreviations Specific to this LNM Edition:**

LIB - Lighted Ice Buoy

---

### **SECTION I - SPECIAL NOTICES**

This section contains information of special concern to the Mariner.

---

#### **Cancellation of NOAA Paper and Raster Nautical Charts**

The National Oceanic and Atmospheric Administration (NOAA) is undertaking a multi-year program to end production and maintenance of its suite of over 1,000 traditional paper nautical charts and all associated raster chart products and services, including: Print-on-Demand (POD) paper nautical charts, Full-size chart PDF files, BookletChart™ PDF files, NOAA raster navigational charts (NOAA RNC®), the NOAA RNC tile service, and the online RNC viewer.

Six months notice of the intent to cancel a specific chart is provided in a "Last Edition" notice. The final cancellation of a chart is made in a "Canceled" notice. Both types of notices will appear in LNM Section IV, "Chart Correction." A comprehensive list of all canceled NOAA charts is available at: <http://www.charts.noaa.gov/MCD/Dole.shtml>.

Traditional paper nautical chart production is ending to enable the creation and maintenance of larger scale, more up-to-date, higher quality coverage of NOAA's electronic navigational chart (NOAA ENC®) product. This will significantly enhance the amount of charted detail available to mariners. More information about NOAA's program to sunset traditional paper charts is on the NOAA Coast Survey website at: <https://nauticalcharts.noaa.gov/charts/farewell-to-traditional-nautical-charts.html>

An online NOAA Custom Chart application at: <https://devgis.charttools.noaa.gov/pod> is available to create chart images from ENC data, which may then be printed. Notices to Mariners will not be issued for NOAA Custom Charts.

LNM: 04/20

#### **SAFETY NOTICE - NAVIGATIONAL RANGE AND SECTOR LIGHTS ON ELECTRONIC CHARTS**

The U.S. Coast Guard has become aware that the Range and Sector Light Characteristic labels are not displayed on Electronic Navigational Charts (ENCs) when used in an Electronic Chart Display and Information System (ECDIS) due to limitations of the S-52 ECDIS display specification. Mariners may query the ENC data directly within ECDIS or refer to the Light List for complete information on Range and Sector Light Characteristics.

LNM: 39/22

#### **2023 Light List**

2023 Light Lists are now available on the USCG Navigation Center's website at: <https://www.navcen.uscg.gov/light-list-annual-publication>. Coast Guard Light Lists are a means for communicating aids to navigation information to the maritime public. Local Notice to Mariners will continue to advise Light List corrections and NAVCEN will continue to publish a compilation of corrections. Complete versions of the 2023 Light Lists are updated weekly on the NAVCEN website and mariners should download applicable copies and updates as needed at: <https://www.navcen.uscg.gov/weekly-light-lists>. A summary of weekly 2023 Light List corrections are available at: <https://www.navcen.uscg.gov/light-list-summary-of-corrections>.

LNM: 05/23

#### **USACE NOTICE TO NAVIGATION INTERESTS**

Current Federal Channel conditions, shoaling, and the most recent channel surveys are available at the following Army Corps of Engineers web sites:

Buffalo: <http://www.lrb.usace.army.mil/>

Detroit: <http://www.lre.usace.army.mil/>

Chicago: <http://www.lrc.usace.army.mil/>  
Rock Island: <http://www.mvr.usace.army.mil/>  
St. Paul: <https://www.mvp.usace.army.mil/>

LNM: 28/12

### GREAT LAKES - Great Lakes Water Levels

See Enclosure 1

The current and four week expected water level table for the Great Lakes, Connecting Channels and the St. Lawrence River, will be published in Enclosure 1 following SECTION VIII - LIGHT LIST CORRECTIONS of the Local Notice to Mariner or by visiting the link below:

<https://www.lre.usace.army.mil/Missions/Great-Lakes-Information/Great-Lakes-Water-Levels/Water-Level-Forecast/Connecting-Channels-Forecast/>

LNM: 32/20

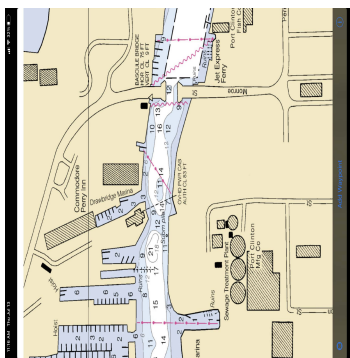
### LAKE ERIE – Fairport Harbor – Chart 14829

The Coast Guard has established a virtual AIS aid to navigation at the entrance of Fairport Harbor to assist in identifying recent shoaling within the channel. The aid (MMSI: 993682815) is labeled W SHOAL 2 and identifies the encroachment of shoaling on the western side of the channel less than 18.5ft water depth. The aid is for reference only and is positioned based on most recent survey data, and does not account for periodic variations in the position of the shoal. Mariners are urged to use caution while transiting the area.

LNM: 21/23

### LAKE ERIE – Portage River – Chart 14829

Low power lines have been reported in the Portage River west of the Monroe Street Bridge in the vicinity of the draw bridge marina. The power lines are lower than the charted height of 83 feet above the low water datum of 1985. All mariners are requested to use caution when transiting the area.



LNM: 29/23

### ST. CLAIR RIVER - Flats Canal - Chart 14854

The Coast Guard has established three temporary danger buoys within the St. Clair Flats Canal, in the St. Clair River, to assist mariners in marking the partially submerged earthen dike along the southeast edge of the channel. The unlighted buoys will be evenly spaced along the dike, extending from the lower point of Seaway Island to the St. Clair Flats Danger Light (LLNR 9575). The buoy characteristics are white with orange in color and display the text "KEEP OUT" across the buoy body. The intent of the temporary project is to evaluate the effectiveness of the buoys in warning mariners of the dangers of leaving the marked channel and crossing over the submerged dike into the shallow flats east of the canal.

LNM: 21/23

### ST. MARYS RIVER - American Canal - Chart 14884

Northeast Pierhead Light (LLNR 14205) The U. S. Army Corps of Engineers will be relocating this light to the top of their new camera tower. As soon as the position and height of the light's new location is confirmed it will be advertised in Section VIII - Light List Corrections of the LNM.

LNM: 10/21

### LAKE MICHIGAN – Muskegon Channel – Chart 14906

The Coast Guard has established a pair of virtual AIS aids to navigation at the entrance of Muskegon Harbor to assist in identifying recent shoaling within the approaches. V-AIS (MMSI: 993682821) identifies the encroachment of shoaling on the northern side of the channel less than 25ft water depth. Similarly, V-AIS (MMSI: 993682842) identifies shoaling on the south side of the channel less than 25ft. The aids are for reference only and are positioned based on most recent survey data and do not account for periodic variations in the position of the shoaling. Mariners are urged to use caution while transiting the area.

LNM: 24/23

### LAKE SUPERIOR – Keweenaw – Chart 14972

Keweenaw Upper Entrance West Breakwater Light (LLNR 15115) was reported damaged and swept from its location on the breakwall. The

approximately 20' metal tower is submerged in vicinity of the breakwater at an unknown position. All mariners are urged to use caution when transiting the area.

LNM: 12/23

**LAKE SUPERIOR – Keweenaw and Isle Royale**

The Coast Guard is experiencing a significant delay in the establishment of the seasonal floating aids in the Keweenaw Waterway and Isle Royale. The specific aids impacted by this delay are listed in Section II – Discrepancies of this notice. All mariners are urged to use caution in transiting these areas.

LNM: 22/23

**LAKE SUPERIOR - Duluth Harbor**

The Coast Guard is experiencing a significant delay in the establishment of the seasonal floating aids inside Duluth-Superior Harbor. The specific aids impacted by this delay are listed in Section II – Discrepancies of this notice. All mariners are urged to use caution in transiting these areas.

LNM: 19/23

**SECTION II - DISCREPANCIES**

This section lists all reported and corrected discrepancies related to Aids to Navigation in this edition. A discrepancy is a change in the status of an aid to navigation that differs from what is published or charted.

**DISCREPANCIES (FEDERAL AIDS)**

LLNR	Aid Name	Status	Chart No.	BNM Ref.	LNM St	LNM End
<b>585</b>	<b>Ogden Island Range Rear Light</b>	<b>LT EXT</b>			<b>35/23</b>	
2725	Buffalo Coast Guard Slip Light	STRUCT DMGD		B187-22	01/23	
3075	Grand Island Direction Light	NIGHT LT BURNING DAY		B164-23	30/23	
<b>4475</b>	<b>Huron Harbor Light</b>	<b>SS INOP</b>	<b>14820</b>	<b>D110-23</b>	<b>35/23</b>	
4575	Moseley Channel Range Rear Light	DAYMK MISSING	14842	D095-23	32/23	
<b>5390</b>	<b>West Harbor Access Channel Buoy 3</b>	<b>OFF STA</b>	<b>14842</b>		<b>35/23</b>	
<b>5395</b>	<b>West Harbor Access Channel Buoy 4</b>	<b>OFF STA</b>	<b>14842</b>		<b>35/23</b>	
<b>5400</b>	<b>West Harbor Access Channel Lighted Buoy 5</b>	<b>OFF STA</b>	<b>14842</b>		<b>35/23</b>	
<b>5405</b>	<b>West Harbor Access Channel Lighted Buoy 6</b>	<b>OFF STA</b>	<b>14842</b>		<b>35/23</b>	
6565	Monroe Harbor Range Rear Light	LT EXT	14846	D101-23	33/23	
6895	East Outer Channel Light 1E	SS INOP	14820	D002-23	01/23	
<b>8560</b>	<b>Lake St. Clair Lighted Buoy 28</b>	<b>LT EXT</b>	<b>14853</b>		<b>35/23</b>	
11355	Thunder Bay Traffic Lighted Bell Buoy TB	LT IMCH		D092-23	31/23	
<b>12890</b>	<b>Pipe Island Twins Lighted Buoy 3</b>	<b>LT IMCH</b>		<b>S084-23</b>	<b>35/23</b>	
13055	Munuscong Channel (Upbound) Lighted Buoy 6	LT EXT		S052-23	20/23	
13217	Munuscong Channel Lighted Buoy 29	LT EXT		S077-23	33/23	
13475	West Neebish Channel (Downbound) Upper Range Rear Light	LT EXT/DAYMK MISSING		S039-23	51/21	
13515	West Neebish Channel (Downbound) Oak Ridge Range Front Light	DAYMK MISSING			50/22	
13525	West Neebish Channel (Downbound) Lighted Buoy 46	OFF STA		S070-23	27/23	
13960	Upper Nicolet Range Rear Light	DAYMK MISSING		S064-23	26/23	
14050	Six Mile Point Range Rear Light	DAYMK MISSING		S079-23	10/21	
14265	Big Point Lighted Buoy 7	LT IMCH		S081-23	34/23	
14710	Big Bay Point Buoy 1	MISSING			24/23	
14775	Keweenaw Waterway Lighted Buoy 1	MISSING			24/23	
14785	Keweenaw Waterway Lighted Buoy 4	MISSING			24/23	

14890	Keweenaw Waterway Lighted Buoy 27	MISSING	S061-23	24/23
14900	Keweenaw Waterway Junction Lighted Buoy "KW"	MISSING		24/23
14945	Keweenaw Waterway Lighted Buoy 31	TRUB		24/23
14960	Keweenaw Waterway Lighted Buoy 35	MISSING		24/23
14975	Atlantic Point Lighted Buoy 37	MISSING		24/23
14990	Keweenaw Waterway Lighted Buoy 42	MISSING		24/23
15015	Keweenaw Waterway Lighted Buoy 49	TRUB		24/23
15025	Keweenaw Waterway Lighted Buoy 50	TRUB		24/23
15030	Keweenaw Waterway Lighted Buoy 51	TRUB		24/23
15080	Keweenaw Waterway Lighted Buoy 61	TRUB		24/23
15115	Keweenaw Upper Entrance West Breakwater Light	STRUCT DEST	S015-23	02/23
15155	Keweenaw Point Lighted Buoy 1	MISSING		24/23
15750	Superior Front Channel Lighted Buoy 1	TRUB		24/23
15765	Superior Front Channel Lighted Buoy 5	TRUB		24/23
15785	Superior Front Channel Lighted Buoy 9	TRUB		24/23
15875	Duluth Harbor Basin Lighted Buoy 2	TRUB	S036-23	13/23
16180	St. Louis River Upper Channel Lighted Buoy 4	TRUB		24/23
16205	Minnesota Channel (Eastern Section) Lighted Buoy 6	TRUB		24/23
16210	Minnesota Channel (Eastern Section) Lighted Buoy 7	TRUB		24/23
16220	Minnesota Channel (Eastern Section) Lighted Buoy 9	TRUB		24/23
16225	Minnesota Channel (Eastern Section) Lighted Buoy 10	TRUB		24/23
16235	Minnesota Channel (Eastern Section) Lighted Buoy 14	MISSING		24/23
16240	Minnesota Channel (Eastern Section) Lighted Buoy 15	MISSING		24/23
16250	Minnesota Channel (Eastern Section) Lighted Buoy 19	MISSING		24/23
16650	Hat Point Lighted Bell Buoy 1	MISSING		24/23
16680	Cumberland Point Buoy 2	MISSING		24/23
16695	Siskiwit Bay Passage Lighted Buoy 2	MISSING		24/23
16705	Harlem Reef Buoy 2	MISSING		24/23
16715	Malone Bay Entrance Buoy 2	MISSING		24/23
16720	Malone Bay Entrance Buoy 3	MISSING		24/23
16725	Malone Bay Buoy 4	MISSING		24/23
16730	Malone Bay Buoy 5	MISSING		24/23
16770	Middle Island Passage Lighted Bell Buoy 2	TRUB		24/23
16825	Blake Point Five-Foot Shoal Buoy D	MISSING		24/23
17210	Canoe Channel Daybeacon 8	STRUCT DEST/TRUB		23/22
17550	Kabetogama Lake Warning Daybeacon	STRUCT DEST	S114-22	34/22
17745	New Shoal Lighted Bell Buoy 3	MISSING	14902 S035-23	13/23
17810	Beaver Island Shoal Northeast End Lighted Buoy 1	MISSING		24/23
17830	St. James Harbor Buoy 6	MISSING		24/23
17835	St. James Harbor Buoy 7	MISSING		24/23
17840	St. James Harbor Buoy 8	MISSING		24/23
19240	Grand River Buoy 71	ADRIFT	M201-23	29/23
19310	Lake Macatawa Lighted Buoy 1	TRUB		24/23
19330	Big Bay Buoy 3	OFF STA	M237-23	33/23

19350	Lake Macatawa Lighted Buoy 6	TRUB			24/23
19385	Lake Macatawa Lighted Buoy 10	TRUB			24/23
19400	Lake Macatawa Lighted Buoy 14	TRUB			24/23
19410	Lake Macatawa Lighted Buoy 16	TRUB			24/23
19420	Lake Macatawa Lighted Buoy 19	TRUB			24/23
19525	St. Joseph South Pierhead Light	DAYMK MISSING	14905	M234-23	33/23
19790	Chicago Lake Front Northeast Shoal Lighted Buoy 2	RAC INOP	14905	M098-23	20/23
20430	Kenosha Breakwater Light	REDUCED INT	14904	M123-23	22/23
22180	Green Bay Harbor Entrance Channel Range Front Light	DAYMK DMGD		M327-22	24/21
22185	Green Bay Harbor Entrance Channel Range Rear Light	DAYMK MISSING		M157-23	44/20

**DISCREPANCIES (FEDERAL AIDS) CORRECTED**

LLNR	Aid Name	Status	Chart No.	BNM Ref.	LNM St	LNM End
5460	West Harbor Junction Light	WATCHING PROPERLY	14842		32/23	35/23
8240	William Livingstone Memorial Light	RELIGHTED	14853		35/23	35/23
12100	Burt Lake Obstruction Buoy	WATCHING PROPERLY			35/23	35/23
21215	Sturgeon Bay Ship Channel Lighted Buoy 32	WATCHING PROPERLY			33/23	35/23

**DISCREPANCIES (PRIVATE AIDS)**

LLNR	Aid Name	Status	Chart No.	BNM Ref.	LNM St	LNM End
90	Aluminum Foundry Water Intake Buoy	LT EXT	14761	B173-23	31/23	
2271	R. E. Ginna Nuclear Security Zone No Entry Buoy A	MISSING			28/23	
2271.1	R. E. Ginna Nuclear Security Zone No Entry Buoy B	MISSING		B144-23	28/23	
2396	Olcott Harbor Detached Breakwater East Light	LT EXT	14800	B189-23	34/23	
2525	Lewiston Ski Jump Light	MISSING			25/23	
2740	Buffalo River Light 5	LT EXT			23/23	
3300	Niagara Falls Transmission Line Light C	LT EXT			26/23	
3305	Buckhorn Island Dike Light 1	LT EXT			26/23	
3310	Buckhorn Island Dike Light 2	LT EXT			26/23	
3325	Hooker Electrochemical Crib Light	LT EXT			26/23	
<b>3330</b>	<b>Hooker Electrochemical Outfall Crib Light</b>	<b>LT EXT</b>		<b>B195-23</b>	<b>35/23</b>	
3615	Presque Isle Park Range Front Light	Status Unreported		B129-23	27/23	
3620	Presque Isle Park Rear Range Light	LT EXT			34/23	
3725	Conneaut Boat Club West Light	LT EXT			26/23	
<b>3910</b>	<b>Mentor Harbor Light 1</b>	<b>LT EXT</b>		<b>B196-23</b>	<b>35/23</b>	
3930	Mentor Harbor Yacht Club Range Front Light	LT EXT		B118-23	26/23	
3935	Mentor Harbor Yacht Club Range Rear Light	LT EXT		B119-23	26/23	
3950	Chagrin West Pier Inner Light	LT EXT	14829	B120-23	26/23	
3975	Wildwood Park West Detached Breakwater Light	DAYMK MISSING			23/23	
4030	Cleveland Waterworks Intake Crib Light	SS INOP		B197-23	34/23	
4104	Bkl Regulated Navigation Area Light	LT EXT			23/23	
4150	North Coast Harbor Light 2	MISSING			28/23	
4190	Whiskey Island Marina Entrance Light 1	LT EXT			23/23	
4240	Cuyahoga River Abutment Light	LT EXT			27/22	
5247	Johnson Island Light 1	LT EXT	14842	D007-23	11/23	

5950	Davis-Besse Nuclear Power Plant Obstruction Buoy	MISSING	14846		31/23
12585	Old Round Island Point Light	LT EXT		S006-23	01/23
19860	Filtration Plant Breakwater South End Light	LT EXT			16/23
19875	Jackson Park Outer Harbor Light 2	LT EXT	14905	M225-23	32/23
19931	Thirty-First Street Jetty Danger Lighted Buoy A	MISSING	14905		27/23
19932	Thirty-First Street Jetty Danger Lighted Buoy B	LT EXT	14905		27/23
19933	Thirty-First Street Jetty Danger Lighted Buoy C	LT EXT	14905		27/23
19956	Northerly Island Danger Lighted Buoy A	LT EXT			34/23
19956.1	Northerly Island Danger Lighted Buoy B	LT EXT			34/23
19956.2	Northerly Island Danger Lighted Buoy C	LT EXT			34/23
20387	Northpoint Marina Reef Obstruction Lighted Buoy B	MISSING	14904		26/23
20388	Northpoint Marina Reef Obstruction Lighted Buoy C	MISSING	14904		26/23
20389	Northpoint Marina Reef Obstruction Lighted Buoy D	MISSING	14904		26/23
20470	Racine Launch Basin Entrance Light	LT IMCH	14904		22/23
20490	Racine East Harbor Entrance Light 2	LT EXT	14904	M212-23	31/23
20500	Racine Harbor Light 5	LT EXT	14904	M174-23	27/23
20515	Racine Harbor Light 9	LT EXT		M175-23	27/23
20729	South Shore Park Entrance Lighted Buoy 1	MISSING		M169-23	27/23
20730	South Shore Park Entrance Lighted Buoy 2	MISSING		M170-23	27/23
20755	Mickinley Marina Light 1	REDUCED INT			25/23
20842	Manitowoc Intake East Light	LT EXT	14903	M245-23	34/23

**DISCREPANCIES (PRIVATE AIDS) CORRECTED**

LLNR	Aid Name	Status	Chart No.	BNM Ref.	LNM St	LNM End
5305	East Harbor Entrance Light 1	WATCHING PROPERLY	14842		21/23	

**PLATFORM DISCREPANCIES**

Name	Status	Position	BNM Ref.	LNM St	LNM End
------	--------	----------	----------	--------	---------

None

**PLATFORM DISCREPANCIES CORRECTED**

Name	Status	Position	BNM Ref.	LNM St	LNM End
------	--------	----------	----------	--------	---------

None

**SECTION III - TEMPORARY CHANGES and TEMPORARY CHANGES CORRECTED**

This section contains temporary changes and corrections to Aids to Navigation for this edition. When charted aids are temporarily relocated for dredging, testing, evaluation, or marking an obstruction, a temporary correction shall be listed in Section IV giving the new position.

**TEMPORARY CHANGES**

LLNR	Aid Name	Status	Chart No.	BNM Ref.	LNM St	LNM End
2105	Oswego Harbor West Channel Light 2	TRLB	14786		17/19	
2720	Buffalo Harbor North Entrance Light 7	DISCONTINUED			33/19	
8240	William Livingstone Memorial Light	Reduced Intensity	14853		33/21	
9690	Grande Pointe Light 23	TRLT	14853		47/20	
14540	Little Lake Harbor Light 2	DISCONTINUED FOR DREDGING	14961		47/22	

15220	Ontonagon Harbor East Breakwater Light	DISCONTINUED	02/22
16963	Driftwood Point Light	DISCONTINUED	45/20

**TEMPORARY CHANGES CORRECTED**

LLNR	Aid Name	Status	Chart No.	BNM Ref.	LNM St	LNM End
5435	West Harbor Inner Channel Daybeacon 12	Reestablished	14842		33/21	35/23
5470	West Harbor Inner Channel Daybeacon 14	Reestablished	14842		38/20	35/23

**PLATFORM TEMPORARY CHANGES**

Name	Status	Position	BNM Ref.	LNM St	LNM End
<b>None</b>					

**PLATFORM TEMPORARY CHANGES CORRECTED**

Name	Status	Position	BNM Ref.	LNM St	LNM End
<b>None</b>					

**SECTION IV - CHART CORRECTIONS**

This section contains corrections to federally and privately maintained Aids to Navigation, as well as NOS corrections.

This section contains corrective actions affecting chart(s). Corrections appear numerically by chart number, and pertain to that chart only. It is up to the mariner to decide which chart(s) are to be corrected. The following example explains individual elements of a typical chart correction.

Chart Number	Chart Edition	Edition Date	Last Local Notice to Mariners	Horizontal Datum Reference	Source of Correction	Current Local Notice to Mariners
12327	91st Ed.	19-APR-97	Last LNM: 26/97	NAD 83		27/97
Chart Title: NY-NJ-NEW YORK HARBOR - RARITAN RIVER						
Main Panel 2245 NEW YORK HARBOR						
(Temp) ADD	NATIONAL DOCK CHANNEL BUOY 3				CGD01	at 40-41-09.001N 074-02-48.001W
Corrective Action	Green can	Object of Corrective Action			Position	

(Temp) indicates that the chart correction action is temporary in nature. Courses and bearings are given in degrees clockwise from 000 true. Bearings of light sectors are toward the light from seaward. The nominal range of lights is expressed in nautical miles (NM) unless otherwise noted.

**12348**      **34th Ed.**      **01-JUN-10**      **Last LNM: 38/20**      **NAD 83**      **35/23**

Chart Title: Hudson River Coxsackie to Troy

Main Panel 2223 HUDSON RIVER COXSACKIE TO TROY NY. Page/Side: N/A

LAST EDITION      No new editions of chart 12348 will be published. It will be canceled on 31-Jan-24. Comparable or larger scale Electronic Navigational Chart (ENC) coverage is available. See "Cancellation of NOAA Paper and Raster Nautical Charts" in Section I of this LNM for details. A list of all canceled NOAA charts is at <https://www.charts.noaa.gov/MCD/Dole.shtml>.      NOS      --

**14810**      **6th Ed.**      **01-JAN-15**      **Last LNM: 16/17**      **NAD 83**      **35/23**

Chart Title: Olcott Harbor to Toronto; Olcott and Wilson Harbors

Main Panel 1004 OLCOTT NY TO TORONTO ONT. Page/Side: A

LAST EDITION      No new editions of chart 14810 will be published. It will be canceled on 04-Oct-23. Comparable or larger scale Electronic Navigational Chart (ENC) coverage is available. See "Cancellation of NOAA Paper and Raster Nautical Charts" in Section I of this LNM for details. A list of all canceled NOAA charts is at <https://www.charts.noaa.gov/MCD/Dole.shtml>.      NOS      --

**14828**      **7th Ed.**      **01-JUN-16**      **Last LNM: 49/11**      **NAD 83**      **35/23**

Chart Title: Erie to Geneva

Main Panel 1364 ERIE TO GENEVA. Page/Side: A

LAST EDITION      No new editions of chart 14828 will be published. It will be canceled on      NOS      --



04-Oct-23. Comparable or larger scale Electronic Navigational Chart (ENC) coverage is available. See "Cancellation of NOAA Paper and Raster Nautical Charts" in Section I of this LNM for details. A list of all canceled NOAA charts is at <https://www.charts.noaa.gov/MCD/Dole.shtml>.

<b>14829</b>	<b>7th Ed.</b>	<b>01-MAY-15</b>	<b>Last LNM: 48/19</b>	<b>NAD 83</b>	<b>35/23</b>
<i>ChartTitle: Geneva to Lorain; Beaver Creek; Rocky River; Mentor Harbor; Chagrin River</i>					
<b>Main Panel 1572 GENEVA TO LORAIN. Page/Side: A</b>					
					NOS
LAST EDITION	No new editions of chart 14829 will be published. It will be canceled on 04-Oct-23. Comparable or larger scale Electronic Navigational Chart (ENC) coverage is available. See "Cancellation of NOAA Paper and Raster Nautical Charts" in Section I of this LNM for details. A list of all canceled NOAA charts is at <a href="https://www.charts.noaa.gov/MCD/Dole.shtml">https://www.charts.noaa.gov/MCD/Dole.shtml</a> .				--
<b>14838</b>	<b>4th Ed.</b>	<b>01-APR-05</b>	<b>Last LNM: 43/14</b>	<b>NAD 83</b>	<b>35/23</b>
<i>ChartTitle: Buffalo to Erie;Dunkirk;Barcelone Harbor</i>					
<b>Main Panel 1139 BUFFALO TO ERIE. Page/Side: N/A</b>					
					NOS
LAST EDITION	No new editions of chart 14838 will be published. It will be canceled on 04-Oct-23. Comparable or larger scale Electronic Navigational Chart (ENC) coverage is available. See "Cancellation of NOAA Paper and Raster Nautical Charts" in Section I of this LNM for details. A list of all canceled NOAA charts is at <a href="https://www.charts.noaa.gov/MCD/Dole.shtml">https://www.charts.noaa.gov/MCD/Dole.shtml</a> .				--
<b>14842</b>	<b>17th Ed.</b>	<b>01-NOV-18</b>	<b>Last LNM: 38/17</b>	<b>NAD 83</b>	<b>35/23</b>
<i>ChartTitle: SMALL-CRAFT BOOK CHART - Port Clinton to Sandusky, including the Islands (book of 35 charts)</i>					
<b>Main Panel 1163 SOUTH SHORE LAKE ERIE PORT CLINTON TO SANDUSKY 2 --. Page/Side: -</b>					
					NOS
LAST EDITION	No new editions of chart 14842 will be published. It will be canceled on 04-Oct-23. Comparable or larger scale Electronic Navigational Chart (ENC) coverage is available. See "Cancellation of NOAA Paper and Raster Nautical Charts" in Section I of this LNM for details. A list of all canceled NOAA charts is at <a href="https://www.charts.noaa.gov/MCD/Dole.shtml">https://www.charts.noaa.gov/MCD/Dole.shtml</a> .				--
<b>14844</b>	<b>34th Ed.</b>	<b>01-JUN-19</b>	<b>Last LNM: 27/18</b>	<b>NAD 83</b>	<b>35/23</b>
<i>ChartTitle: Islands in Lake Erie;Put-In-Bay</i>					
<b>Main Panel 1208 ISLANDS IN LAKE ERIE INCLUDING SANDUSKY BAY OHIO --. Page/Side: -</b>					
					NOS
LAST EDITION	No new editions of chart 14844 will be published. It will be canceled on 04-Oct-23. Comparable or larger scale Electronic Navigational Chart (ENC) coverage is available. See "Cancellation of NOAA Paper and Raster Nautical Charts" in Section I of this LNM for details. A list of all canceled NOAA charts is at <a href="https://www.charts.noaa.gov/MCD/Dole.shtml">https://www.charts.noaa.gov/MCD/Dole.shtml</a> .				--
<b>14846</b>	<b>16th Ed.</b>	<b>01-NOV-18</b>	<b>Last LNM: 38/18</b>	<b>NAD 83</b>	<b>35/23</b>
<i>ChartTitle: SMALL-CRAFT BOOK CHART - West End of Lake Erie from Perrysburg, OH., of the Maumee R. to Huron R., Mich., and Bar Pt., Ont. (book of 34 charts)</i>					
<b>Inset 1211 WEST END OF LAKE ERIE PAGE 2 --. Page/Side: -</b>					
					NOS
LAST EDITION	No new editions of chart 14846 will be published. It will be canceled on 04-Oct-23. Comparable or larger scale Electronic Navigational Chart (ENC) coverage is available. See "Cancellation of NOAA Paper and Raster Nautical Charts" in Section I of this LNM for details. A list of all canceled NOAA charts is at <a href="https://www.charts.noaa.gov/MCD/Dole.shtml">https://www.charts.noaa.gov/MCD/Dole.shtml</a> .				--
<b>14853</b>	<b>19th Ed.</b>	<b>01-OCT-18</b>	<b>Last LNM: 44/21</b>	<b>NAD 83</b>	<b>35/23</b>
<i>ChartTitle: SMALL-CRAFT BOOK CHART - Detroit River, Lake St. Clair and St. Clair River (book of 47 charts)</i>					
<b>Main Panel 1263 DETROIT RIVER --. Page/Side: -</b>					
					NOS
LAST EDITION	No new editions of chart 14853 will be published. It will be canceled on 04-Oct-23. Comparable or larger scale Electronic Navigational Chart (ENC) coverage is available. See "Cancellation of NOAA Paper and Raster Nautical Charts" in Section I of this LNM for details. A list of all canceled NOAA charts is at <a href="https://www.charts.noaa.gov/MCD/Dole.shtml">https://www.charts.noaa.gov/MCD/Dole.shtml</a> .				--
<b>14903</b>	<b>26th Ed.</b>	<b>01-AUG-20</b>	<b>Last LNM: 30/20</b>	<b>NAD 83</b>	<b>35/23</b>
<i>ChartTitle: Algoma to Sheboygan;Kewaunee;Two Rivers</i>					
<b>Main Panel 1363 LAKE MICHIGAN-ALGOMA TO SHEBOYGAN --. Page/Side: -</b>					
					NOS
LAST EDITION	No new editions of chart 14903 will be published. It will be canceled on				--

04-Oct-23. Comparable or larger scale Electronic Navigational Chart (ENC) coverage is available. See "Cancellation of NOAA Paper and Raster Nautical Charts" in Section I of this LNM for details. A list of all canceled NOAA charts is at <https://www.charts.noaa.gov/MCD/Dole.shtml>.

**14904**      **28th Ed.**      **01-MAY-19**      **Last LNM: 46/21**      **NAD 83**      **35/23**  
*ChartTitle: Port Washington to Waukegan;Kenosha;North Point Marina;Port Washington;Waukegan*  
**Main Panel 1366 PORT WASHINGTON TO WAUKEGAN - -. Page/Side: -**

ADD	Univ of Illinois Waukegon Weather Wave (45186) Buoy B Yellow FI Y 4s	CGD09 at 42-22-01.920N	087-47-42.720W
ADD	Univ of Illinois Winthrop Weather Wave (45187) Buoy A Yellow FI Y 4s	CGD09 at 42-29-26.160N	087-46-44.040W
LAST EDITION	No new editions of chart 14904 will be published. It will be canceled on 04-Oct-23. Comparable or larger scale Electronic Navigational Chart (ENC) coverage is available. See "Cancellation of NOAA Paper and Raster Nautical Charts" in Section I of this LNM for details. A list of all canceled NOAA charts is at <a href="https://www.charts.noaa.gov/MCD/Dole.shtml">https://www.charts.noaa.gov/MCD/Dole.shtml</a> .	NOS --	--

**14905**      **34th Ed.**      **01-AUG-20**      **Last LNM: 46/21**      **NAD 83**      **35/23**  
*ChartTitle: Waukegan to South Haven;Michigan City;Burns International Harbor;New Buffalo*  
**Main Panel 1371 LK MICH WAUKEGAN ILL-SOUTH HAVEN MICH - -. Page/Side: -**

LAST EDITION	No new editions of chart 14905 will be published. It will be canceled on 04-Oct-23. Comparable or larger scale Electronic Navigational Chart (ENC) coverage is available. See "Cancellation of NOAA Paper and Raster Nautical Charts" in Section I of this LNM for details. A list of all canceled NOAA charts is at <a href="https://www.charts.noaa.gov/MCD/Dole.shtml">https://www.charts.noaa.gov/MCD/Dole.shtml</a> .	NOS --	--
--------------	--	-----------	----

**14906**      **25th Ed.**      **01-SEP-13**      **Last LNM: 28/16**      **NAD 83**      **35/23**  
*ChartTitle: South Haven to Stony Lake;South Haven;Port Sheldon;Saugatuck Harbor*  
**Main Panel 1375 LAKE MICHIGAN SOUTH HAVEN TO STONY LAKE. Page/Side: N/A**

LAST EDITION	No new editions of chart 14906 will be published. It will be canceled on 04-Oct-23. Comparable or larger scale Electronic Navigational Chart (ENC) coverage is available. See "Cancellation of NOAA Paper and Raster Nautical Charts" in Section I of this LNM for details. A list of all canceled NOAA charts is at <a href="https://www.charts.noaa.gov/MCD/Dole.shtml">https://www.charts.noaa.gov/MCD/Dole.shtml</a> .	NOS --	--
--------------	--	-----------	----

---

**SECTION V - ADVANCE NOTICES**

This section contains advance notice of approved projects, changes to aids to navigation, or upcoming temporary changes such as dredging, etc. Mariners are advised to use caution while transiting these areas.

---

**SUMMARY OF ADVANCED APPROVED PROJECTS**

<b><u>Approved Project(s)</u></b>	<b><u>Project Date</u></b>	<b><u>Ref. LNM</u></b>
None		

**Advance Notice(s)**

**LAKE MICHIGAN -Kewaunee - Chart 14903**

The Coast Guard is considering changing the operation of the sound signal on Kewaunee Shoal Light (LLNR 20965) from seasonally operating continuously April 1st to November 1st, to a Mariner Radio Activated Sound Signal (MRASS) year-round. The sound signal would be activated by keying the microphone five or more times on VHF FM channel 83A / 157.175MHz.

LNM: 16/23

**LAKE MICHIGAN - Green Bay - Chart 14910**

The Coast Guard is considering changing the operation of the sound signal on Peshtigo Reef Light (LLNR 21990) from seasonally operating continuously May 1st to October 20th, to a Mariner Radio Activated Sound Signal (MRASS) year-round. The sound signal would be activated by keying the microphone five or more times on VHF FM channel 83A / 157.175MHz.

LNM: 16/23

**LAKE MICHIGAN – Waugoshance Point – Chart 14911**

The Coast Guard is considering changing the operation of Garden Island Shoal Lighted Bell Buoy 1 (LLNR 21540) by eliminating the seasonal winter mark. The seasonal winter mark is routinely unreliable due to ice conditions and is often found off station or sunk during spring servicing.

LNM: 23/23

**LAKE MICHIGAN – Waugoshance Point – Chart 14911**

The Coast Guard is considering changing the operation of Ojibwa Island Shoal Buoy 1 (LLNR 21565) from permanent to seasonally relieved. The buoy is routinely unreliable due to ice conditions and is often found off station or sunk during spring servicing. The change would upgrade the seasonal buoy to a radar reflective can and significantly increase its radar detection range when on station.

LNM: 23/23

---

---

### SECTION VI - PROPOSED CHANGES

Periodically, the Coast Guard evaluates its system of aids to navigation to determine whether the conditions for which the aids to navigation were established have changed. When changes occur, the feasibility of improving, relocating, replacing, or discontinuing aids are considered. This section contains notice(s) of non-approved, proposed projects open for comment. SPECIAL NOTE: Mariners are requested to respond in writing to the District office unless otherwise noted (see banner page for address).

---

#### PROPOSED WATERWAY PROJECTS OPEN FOR PUBLIC COMMENT

<u>Proposed Project(s)</u>	<u>Closing</u>	<u>Docket No.</u>	<u>Ref. LNM</u>
None			

#### Proposed Change Notice(s)

**For any comments or questions on these proposed changes please contact:**

The Ninth District Aids to Navigation manager at Brian.D.Hawkins2@uscg.mil or call (216) 902-6070.

LNM: 30/13

---

---

### SECTION VII - GENERAL

This section contains information of general concern to the Mariners. Mariners are advised to use caution while transiting these areas.

#### **Waterways Analysis and Management System**

The Ninth Coast Guard District will be reviewing the following waterways beginning in 2022. The study focuses primarily on aids to navigation in the waterway. Public comments are an important tool in this process so that we can provide the adequate markings and the right mix of signals to a waterway for safe navigation. Comments on the below listed waterways can be sent to Brian.D.Hawkins2@uscg.mil or by calling (216) 902-6070. You may also complete the survey attached to the Local Notice to Mariner and either email it or mail it to: Commander (dpw), Ninth Coast Guard District, 1240 East Ninth St., Cleveland, Ohio 44199.

- Sackets Harbor  
(LLNR 1755-2024.9)
- Buffalo Harbor/Black Rock Canal  
(LLNR 2665-3360)
- Dunkirk Harbor  
(LLNR 3365-3492)
- Erie Harbor  
(LLNR 3495-3696)
- Conneaut Harbor  
(LLNR 3700-3735)
- Ashtabula Harbor  
(LLNR 3740-3830)
- Fairport Harbor  
(LLNR 3835-3955)
- Cleveland Harbor  
(LLNR 3975-4260)
- Huron Harbor  
(LLNR 4430-5455)
- Erie Islands  
(LLNR 5520-6025)
- Detroit River / East Outer Channel  
(LLNR 6885-8270)
- St. Clair Rec/Belle Isle Channel  
(LLNR 8280-8396)
- Lake St. Clair  
(LLNR 8665-9300)
- Anchor Bay  
(LLNR 9305-9565)
- Toledo / Maumee Channel  
(LLNR 6030-6455)
- Monroe Harbor  
(LLNR 6460-6680)
- St. Clair River / Huron Cut  
(LLNR 9570-10090)
- St. Mary's River  
(LLNR 12765-13755)
- Lake Nicolet / Bayfield Channel  
(LLNR 13955-14192)

### **Waterways Analysis and Management System**

Keweenaw Waterway  
(LLNR 14725-15250)  
Knife River / Two Harbors  
(LLNR 16495-16580)  
M.I.R.  
(LLNR 11780-12170)  
Marquette Harbor  
(LLNR 14620-14720)  
Apostle Islands  
(LLNR 15255-15590)

LNM: 09/20

### **GREAT LAKES - Marine Events**

Marine events such as races, parades, regattas, and fireworks displays are frequently held in the Great Lakes region. Advance information on specific events is contained in enclosure (2) of this publication. The public is reminded to listen to the local broadcast notice to mariners for the most up-to-date information on a marine event. Mariners are advised that some events may require temporary aids to navigation that are not displayed on a chart or in the Light List, and that they should exercise additional caution while operating in the vicinity of a scheduled marine event.

LNM: 24/13

### **LAKE ONTARIO – Henderson**

From 21 Aug 2023 to 10 Sep 2023 the Caldwell Marine International will be removing an old power cable between the mainland and Stony Island at the coordinates listed below. This process may have to be done in two sections. 1 days (2 days depending on weather). CMI will lay a new power cable, and a fiber optic cable between the mainland and Stony Island. Hours of Operations 07:00 – 19:00 – 7 days a week. Seaway Marine Barge - will be restricted in their movement when on site. When cable is attached to the barge and workboats are deployed, all vessels will be restricted in their movements.

LNM: 33/23

### **LAKE ONTARIO – Oswego Harbor – Chart 14813**

From 16 July 2023 to 18 September 2023 Dean Marine and Excavating Inc will be conducting dredging operations in the Oswego Harbor. Hours of operation are 0700-1900 7 days a week. Abdrew J, Megan J and Paige Noel can be contacted on VHF channels 7, 9 and 16. All mariners are requested to transit the area with caution.

LNM: 12/23

### **LAKE ONTARIO – Oswego Harbor – Chart 14800**

From 30 June 2023 to 31 October 2023 Dean Marine and Excavating, INC will be conducting construction and breakwall repair in the Oswego Harbor. Hours of operation are from 0630 to 1900 7 days a week. ST-911 Enduring Freedom can be contacted on VHF channel 16. All mariners are requested to transit the area with caution.

LNM: 22/23

### **LAKE ONTARIO – Little Sodus Bay – Chart 14800**

From 27 July 2023 to 18 Sep 2023 Dean Marine and Excavating INC will be dredging in the Little Sodus Bay Harbor. Hours of operation are from 0630 to 1930 Sunday to Monday. Megan J can be contacted on VHF channels 79 and 16. All mariners are requested to transit the area with caution.

LNM: 22/23

### **LAKE ONTARIO – Little Sodus Bay – Chart 14800**

There is an uncharted breakwall along the shore extending from the west side of Little Sodus Bay entrance to the boat ramp of West Barrier Bar County Park. The breakwall is unmarked and unlit. Visibility of the breakwall may be impacted due to high water. All mariners are requested to transit the area with caution.

LNM: 19/23

### **LAKE ONTARIO – Rochester Harbor – Chart 14800**

From 26 June 2023 to 15 Sep 2023 Great Lakes Dock and Material will be conducting pier repair in Charlotte NY. Hours of operation are 24 hours a day 7 days a week. Tug Duluth, Barge Jacyuelyn, Barge Hannah Avery can be contacted on VHF 7 and 16. All mariners are requested to transit the area with caution.

LNM: 26/23

### **LAKE ERIE - Buffalo River – Chart 14833**

From 30 May 2023 to 30 September 2023 BIDCO Marine Group Inc will be conducting diving and pile driving operations in the Buffalo River in positions 42° 52' 25.536" N 78° 52' 37.8372" W and 42° 52' 19.272" N 78° 52' 23.2932" W. Hours of operations are from 0700 to 1530 Monday through Friday. Spud barges on scene can be contacted on VHF channel 16. All mariners are requested to transit the area with caution.

LNM: 22/23

### **LAKE ERIE - Buffalo River – Chart 14833**

From 14 Aug 2023 to 31 Oct 2023 BIDCO Marine Group Inc will be conducting Spud barge and equipment will be moored near the breakwater for dredging operations against the bulkhead operations in Buffalo Harbor, Black Rock Canal Entrance Channel in positions Latitude: 42°53'16.0"N Longitude: 78°53'28.1"W. Hours of operations are from 0700 to 1530 Monday through Friday. Spud barges on scene can be contacted on VHF channel 16. All mariners are requested to transit the area with caution.

LNM: 33/23

**LAKE ERIE - Buffalo – Chart 14838**

From 1 July 2023 to 15 December 2023 Ryba Marine Construction will be conducting repairs to the Buffalo north breakwater. Hours of operation are 24 hours a day 7 days a week. Tug Thomas R. Morrish can be contacted on VHF channels 13 and 16. All mariners are requested to transit the area with caution.

LNM: 22/23

**LAKE ERIE – OH - Ashtabula Harbor – Chart 14836**

A submerged breakwater is being constructed in Ashtabula Harbor, to be connected to the existing East Breakwater. The submerged breakwater will be connected to the East Breakwater at the first angle point of the East Breakwater, as entering the harbor, from the lake. All elevations referenced are referred to Low Water Datum (LWD), IGLD 1985.

The center line of the submerged breakwater approximately follows the same azimuth as the first segment of the East Breakwater, in a south easterly direction, for approximately 1000', then slightly bends to the east for another two segments, for approximately 500'.

The first 1000' (Area "A") has a crest design height of -2.0' with a crest width of 9', and a footprint of approximately 150', with the next 100' transitioning to the dimensions in the next item.

The final 400 (Area "B") has a crest height of -5.0', with a crest width of 9', and a footprint of approximately 50'. The coordinates, in decimal degrees, are as follows:

1. 41.918447801N 80.790362308W
2. 41.916367139N 80.788014301W
3. 41.916189406N 80.787730327W
4. 41.916026216N 80.787424318W
5. 41.915640784N 80.786454826W
6. 41.916242815N 80.783904852W

All mariners are requested to transit the area with caution.

LNM: 17/23

**LAKE ERIE – Fairport Harbor – Chart 14829**

The Army Corp of Engineers will be deploying new research buoys in the vicinity of Fairport Harbor in positions.

- A 41-710366N 81-383600W
- B 41-760039N 81-280720W
- C 41-764492N 81-247534W
- D 41-772914N 81-239151W
- E 41-780165N 81-242502W
- F 41-770848N 81-227184W
- G 41-775474N 81-212654W
- H 41-780889N 81-198304W
- I 41-800360N 81-154247W

All mariners are requested to transit the area with caution.

LNM: 17/23

**LAKE ERIE – Cuyahoga River – Chart 14829**

The Coast Guard has received a report of a fixed 5' wide section of steel bulkhead protruding into the Cuyahoga River in approximate position 41 29' 34"N, 081 41' 31"W. All mariners are requested to transit the area with caution.

LNM: 19/23

**LAKE ERIE – Vermilion – Chart 14839**

From 7 August 2023 to 4 Dec 2023 Mark Excavating and Trucking Inc will be conducting reconstruction of the West Pier in Vermilion OH. Hours of operation will be from sunrise to sunset Monday thru Friday. No vessels will be used and work will be performed adjacent to the existing west pier from the west side of the pier with excavators. All mariners are requested to transit the area with caution.

LNM: 28/23

**LAKE ERIE – SANDUSKY HARBOR – CHART 14845**

From 6 Sep 2023 to 10 Oct 2023 the King Company will be conducting hydraulic dredging in the Sandusky Harbor. Hours of operation are 24 hours a day 7 days a week. Dredge Buxtonn II can be contacted on VHF channels 16, 18 and 73. Dredging Sandusky Harbor From STA 220+00 to 135+00 (Upper Straight). Submerged pipe laying on the lake floor marked by orange round buoys every 500 feet. The (2) white buoys by the dredge indicate winch anchor locations. The material will be pumped hydraulically into the confined disposal facility off Cedar Point Dr. Main contact will be the Superintendent Joseph Martin. Cell# listed below. Our pipe pontoon will be floating in the Federal Channel limits during rough seas. It is bright yellow, 25'x8'x6' and has (2) flashing lights on each end that come on at night. For vessels requiring a lot of draft that will be crossing the lower straight. Please look for the red & green 49" buoys with red or green reflective tape on top for the safe area to cross the pipeline. The pipeline will subtract 18" of depth that your vessel's depth sounder will read. If going by the dredge, look out for the passing signal lights. Green = Passing side / Red = No Passing.

LNM: 35/23

**LAKE ERIE – Monroe Harbor – CHART 14845**

From 29 Aug 2023 to 15 Sep 2023 the King Company will be conducting hydraulic dredging in the Monroe Harbor. Hours of operation are 24 hours a day 7 days a week. Dredge Buxtonn II can be contacted on VHF channels 16, 18 and 73. Dredging the harbor in Monroe MI. Submerged pipe laying on the lake floor marked by orange round buoys every 500 feet. The disposal pipe is up to 18,000' long and will be pumped into a government owned containment area (CDF). The 18" HDPE pipe will come onto shore on the south end of Sterling State Park to make it's connection to the underground pipe to the CDF. Main contact will be the Superintendent Joseph Martin. Cell# listed below. Our pipe connection pontoon will be floating in the Federal channel during rough seas. It is bright yellow, 25'x8'x6' and has flashers on each end that come on at night.

LNM: 35/23

**LAKE ERIE – Pentwater MI – CHART 14845**

From 23 Aug 2023 to 22 Sep 2023 the King Company will be conducting hydraulic dredging in the Pentwater Harbor, MI. Hours of operation are 24 hours a day 7 days a week. Dredge Buxton II can be contacted on VHF channels 16, 18 and 73. Dredging Pentwater Outer channel. Submerged pipe laying on the lake floor marked by orange round buoys every 500 feet. (2) white buoys will be seen North and South of the dredge. The white buoys indicate winch anchor locations. Disposal area starts North of the pier 800' and runs for an additional 3,000'. Main contact will be the Superintendent Robert Lister. Cell# listed below. During rough seas our pipe pontoon will be floating outside of the channel. It is bright yellow, 25'x8'x6' and has (2) flashing lights on each end that come on at night. From 23 Aug 2023 to 22 Sep 2023 the King Company will be conducting hydraulic dredging in the Pentwater Harbor, MI. Hours of operation are 24 hours a day 7 days a week. Dredge Buxton II can be contacted on VHF channels 16, 18 and 73. Dredging Pentwater Outer channel. Submerged pipe laying on the lake floor marked by orange round buoys every 500 feet. (2) white buoys will be seen North and South of the dredge. The white buoys indicate winch anchor locations. Disposal area starts North of the pier 800' and runs for an additional 3,000'. Main contact will be the Superintendent Robert Lister. Cell# listed below. During rough seas our pipe pontoon will be floating outside of the channel. It is bright yellow, 25'x8'x6' and has (2) flashing lights on each end that come on at night.

LNM: 35/23

**DETROIT RIVER– Detroit – Chart 14854**

From 1 April 2023 to 1 November 2023 J.F. Brennan Co Inc will be installing turbidity curtain enclosures and material placement/capping in the Detroit River. Approximate upstream location of 42° 19' 16.76" N, 083° 03' 29.93" W. Approximate downstream location of 42° 19' 10.28" N, 083° 03' 54.59" W up to 225 feet off the shoreline. Hours of operation are from 0600-1800 7 days a week. M/V Shawondasse can be contacted on VHF channel 13. Work area inclosed with turbidity curtain anchored with 4" steel posts every 25 feet. All Marine work will be within this enclosure after mobilization of equipment. All mariners are requested to transit the area with caution.

LNM: 11/23

**LAKE HURON – Grand Island – Chart 14860**

On June 8, 2023 a wave monitoring buoy has been deployed 25 nautical miles north of Grand Island. in position 46° 58' 21.720" N, 86° 34' 5.520" W. Depth 160 meters.

The duration is as follows: Station instrumented seasonally May to October This buoy is to be maintained for USACE as part of the Coastal Data Information Program (CDIP). The wave buoy is a 3 foot diameter sphere with an attached telemetry whip antenna and a night time yellow color warning flashing light. The light timing sequence is a series of 5 flashes at 1-second intervals with a period of 20 seconds between each series. The buoy is painted yellow and marked "Wave Buoy" with the phone number 858- 534-3032.

LNM: 24/23

**LAKE HURON – Lexington Harbor – Chart 14860**

From 20 Aug 2023 to 30 Aug 2023 The King Company will be conducting hydraulic dredging. Hours of operation are 24 hours a day 7 days a week. Dredge Buxton II can be contacted on VHF channels 16, 18 and 73. Submerged pipe laying on the lake floor marked by orange round buoys every 500 feet. The (2) white buoys by the dredge indicate winch anchor locations. Disposal area starts south of the breakwater 225' and runs for an additional 500'. Main contact will be the Superintendent Joseph Martin. Cell# listed below. During rough seas our pipe pontoon will be floating outside of the channel. It is bright yellow, 25'x8'x6' and has (2) flashing lights on each end that come on at night. All mariners are requested to transit the area with caution.

LNM: 31/23

**ST MARYS RIVER- Saint Mary's SOO Locks – Chart 14887**

Kokosing-Alberici LLC will commence construction on the New Soo Lock Upstream Approach Walls April of 2021. Construction activities will be generally limited to the upstream north channel approach to the decommissioned Sabin and Davis Locks. Delivery by barge and boat of materials, equipment and crew will cross the upstream approach to the Soo Locks navigation channel throughout construction. Operations will commence from 25 Mar 21 to 15 Oct 23 Monday through Saturday 24 hours a day.

LNM: 09/21

**ST MARYS RIVER – Sault Ste. Marie – Chart 14883**

From 24 April 2023 to 30 September 2023 Roen Salvage Company will be conducting steel sheet pile construction at the Carbide Dock. Hours of operation are 0500-1900 7 days a week. Tug Stephen Asher can be contacted on VHF channels 7 and 16. All mariners are requested to transit the area with caution.

LNM: 12/23

**LAKE MICHIGAN – Illinois River - Chart 14901**

Shoaling has been reported between Jenkins Landing (MM 205) and Depue Lake (MM 210) on the Illinois River and at La Salle (MM 233) along the right descending bank. Dredging is scheduled to be after January 1, 2023. All mariners are urged to use caution when transiting the area. For further details, contact Sector Lake Michigan Command Center at (414) 747-7182.

LNM: 49/22

**LAKE MICHIGAN – Waukegan – Chart 14904**

From 15 May 2023 to 31 Oct 2023 Michels Construction will be performing Break Wall construction between North Point Marina and Waukegan harbor, along the shores of Illinois State Beach Park. Operations will be 24 hours a day, 7 days a week. Consisting of material barges, spud barges, and tugboats. There will be 2 anchor buoys roughly 3,000 ft offshore that will be lighted. Barges will be tied up on these anchors at all times. The First location of the anchors will be as follows: Anchor 1 - 42.28'39.59"N 87.47'25.59"W Anchor 2 – 42.25'49.14"N 87.47.35.73W. These will be on locations from 5.15.23 to 11.1.23. Lighted Danger buoys will be placed along the work area where construction is taking place. Tug Ruth Lucille, Leona B, and Kimberly will be available on VHF channel 16.

LNM: 24/23

**LAKE MICHIGAN – New Buffalo Harbor - Chart 14905**

Shoaling has been reported near the middle of the channel immediately inside the break wall in New Buffalo Harbor, MI. The actual water depth is currently significantly below the charted depth. Mariners are urged to use caution when transiting the area. For further details, contact Sector Lake Michigan at (414) 747-7182 or VHF channel 16.

LNM: 15/22

**LAKE MICHIGAN – Port Sheldon – Chart 14932**

Shoaling has been reported near Pigeon Lake at the Port Sheldon entrance. The actual water depth is currently significantly below the charted depth. Mariners are urged to use caution when transiting the area. For further details, contact Sector Lake Michigan at (414) 747-7182 or VHF channel 16.

LNM: 15/23

**LAKE MICHIGAN – Muskegon Channel – Chart 14906**

The Coast Guard has received reports that the depths at the entrance to Muskegon Lake are less than the charted depths. All mariners are requested to transit the area with caution.

LNM: 17/23

**LAKE MICHIGAN – Whihala Beach – Chart 14927**

Whoazone has established a waterborne obstacle course at the Whihala Beach that will be in operation from 11 June 2023 to 26 August 2023. It is requested that all traffic remain outside the designated area and transit the area with caution. Contact Sector Lake Michigan at (414) 747-7182 or Whoazone general manager at (219)234-2615.

LNM: 17/23

**LAKE MICHIGAN – Sheboygan River – Chart 14922**

Shoaling has been reported in entrance of the Sheboygan River in the vicinity of 43-44.928N, 087-42.170W AND 43-44.936N, 087-42.110W. The actual water depth is currently significantly below the charted depth. Mariners are urged to use caution when transiting the area. For further details, contact Sector Lake Michigan at (414) 747-7182 or VHF channel 16.

LNM: 24/22

**LAKE MICHIGAN – Sheboygan – Chart 14924**

From 12 Aug 2023 to 31 Jan 2023 the Kokosing Industrial Inc will be conducting pipeline installation, dredging and diving operations at the Sheboygan Water Utility in Sheboygan, WI. Hours of operation from 0700 to 1900 7 days a week.. Tug Nancy Anne and Tug WM Boyd can be contacted on VHF channels 13 and 16. All mariners are requested to transit the area with caution

LNM: 33/23

**LAKE MICHIGAN – Sheboygan - Chart 14903**

From 5 May 2023 to 1 December 2023 Kokosing Industrial Inc will be conducting pipeline installation and dredging in Sheboygan WI. Hours of operations are from 0700 to 1900 with a possibility of 24 hour operations 7 days a week. Tug Nancy Anne can be contacted on VHF channels 13 and 16. Kokosing IV barge will be working on spuds with accompanying Tug Nancy Anne. Operations will be approximately 1.25 miles north of Sheboygan river entrance. Diving operations are present, nearby vessels maintain 500 foot CPA, minimum. Pleasure craft and passing vessels should remain a safe distance from the work at all times. Additional barges will be moored on anchor buoys inside the Sheboygan river breakwalls. All mariners are requested to transit the area with caution.

LNM: 18/23

**LAKE MICHIGAN – Rawley Point – Chart 14902**

On June 1, 2023 a wave monitoring buoy has been deployed 22 nautical miles ESE off Rawley Pt. in position 44° 03' 18.000" N, 87° 03' 0.000" W. Depth 145 meters.

The duration is as follows: Station instrumented seasonally May to October

This buoy is to be maintained for USACE as part of the Coastal Data Information Program (CDIP). The wave buoy is a 3 foot diameter sphere with an attached telemetry whip antenna and a night time yellow color warning flashing light. The light timing sequence is a series of 5 flashes at 1-second intervals with a period of 20 seconds between each series. The buoy is painted yellow and marked "Wave Buoy" with the phone number 858- 534-3032.

LNM: 23/23

**WESTERN LAKE MICHIGAN**

From 15 July 2023 to 15 October 2023 Ocean Surveys Inc will be conducting hydrographic survey for nautical chart updates. Hours of surveying will be 24 hours a day 7 days a week. M/V Northstar Challenger, R/V South Cove and R/V North Cove can be contacted on VHF channels 13 and 16. All mariners are requested to transit the area with caution.

LNM: 28/23

**LAKE MICHIGAN - Milwaukee - Chart 14924**

J.F. Brennan company will be conducting construction operations on the south end of the confluence of the Milwaukee and Menomonee rivers. This work will take place daily from 7:00 am to 7:00 pm from March 27 to August 31, 2023. A turbidity barrier, small craft, and barges will be used throughout the project. this area will remain open to vessel traffic. please transit the area with caution. the project superintendent can be contacted at 920-205-7149 with any questions. All mariners are requested to transit the area with caution.

LNM: 13/23

**LAKE MICHIGAN – Sheboygan – Chart 14924**

From 6 July 2023 to 31 Jan 2024 Kokosing Industrial will be conducting pipeline installation dredging and diving. Hours of operation are 0700 to 1900 normally 7 days a week with a possibility of 24 hours when needed. Tug Nancy Anne and Tug WM Boyd can be contacted on VHF channels 13 and 16. Mooring buoys will be located 1500 ft due north of the Sheboygan Water Utility. All mariners are requested to transit the area with caution.

LNM: 28/23

**LAKE MICHIGAN – Green Bay – Chart 14902**

From 07 Sep 2023 to 31 Dec 2023 Roen Salvage Company will be conducting mooring dolphin installation and grudging at the Holcim Green Bay Terminal. Hours of operation are 24 hours a day 7 days a week. Tug David R Schanock can be contacted on VHF channels 7 and 16. All mariners are requested to transit the area with caution.

LNM: 30/23

**LAKE MICHIGAN – Milwaukee Harbor – Chart 14924**

The Coast Guard has commissioned three temporary red buoys in the Milwaukee River on the south side of the Broadway Street Bridge (MM 0.79) towards the decommissioned railroad swing bridge for dredging operations. The center buoy is lighted displaying a red quick flash. All mariners are requested to transit the area with caution. For further details, contact Sector Lake Michigan at (414) 747-7182 or VHF channel 16.

LNM: 25/23

**LAKE MICHIGAN – Milwaukee - Chart 14924**

From 15 August 2023 to 30 Sep 2023 Great Lakes Dock and Materials LLC will be conducting breakwater repair of south shore breakwater at the North section in Milwaukee. Hours of operation are 24 hours a day 7 days a week. Barge Justin Avery, Tug Defiance and Tug George F. Biley can be contacted on VHF channels 16 and 18. All mariners are requested to transit the area with caution.

LNM: 28/23

**LAKE MICHIGAN – St. Joseph – Chart 14930**

From 1 July 2023 to 31 Aug 2023 Great Lakes Dock and Materials will be performing maintenance dredging in the inner harbor of St. Joseph. Hours of operations are 24 hours a day 7 days a week. Dredge Justin Avery, Tug George F. Bailey and Tug Defiance can be contacted on VHF channels 16 and 18. All mariners are requested to transit the area with caution.

LNM: 12/23

**LAKE MICHIGAN –St. Joseph River – Chart 14930**

Shoaling has been reported near the entrance channel of the St. Joseph River approximately 500 ft west of the North Pierhead Light (LLNR 19515). The actual water depth may be several feet less than the charted depth. Mariners are urged to use caution when transiting the area. For further details, contact Sector Lake Michigan at (414)747-7182 or VHF channel 16.

LNM: 43/22

**LAKE MICHIGAN – Ludington – Chart 14901**

From 01 March 2023 to 01 October 2023 Under Water Construction will be conducting dive operations at the Ludington pump storage power plant. All mariners are requested to transit the area with caution. Contact Under Water Construction at (269)921-2390.

LNM: 17/23

**LAKE MICHIGAN – Ludington – Chart 14901**

From 19 July 2023 to 25 Sep 2023 Viking Marine Construction will be conducting hydraulic dredging in the Ludington Harbor. Hours of operation are 24 hours a day 7 days a week. Dredge AJ can be contacted on VHF channel 78. All mariners are requested to transit the area with caution.

LNM: 29/23

**LAKE MICHIGAN – Chicago – Chart 14928**

From 16 April 2023 to 01 September 2023 Roen Salvage Company will be conducting breakwater repair in Chicago Harbor. Hours of operation are 24 hours a day 7 days a week. Tug David Schanock can be contacted on VHF channels 7 and 16. All mariners are requested to transit the area with caution.

LNM: 12/23

**LAKE SUPERIOR – Little Lake Harbor – Chart 14961**

Shoaling has been reported in the entrance of Little Lake Harbor exceeding 5 feet above low water datum near the channel edges. Some cross sections of the channel are shoaled nearly the full width to 2 feet or more above low datum. The harbor should not be considered as a functional harbor or refuge. All mariners are requested to transit the area with caution.

LNM: 47/22

**LAKE SUPERIOR – Duluth Harbor - Chart 14975**

From 23 Aug 2023 to 5 Nov 2023 J.F. Brennan Company will be dredging in the Duluth-Superior Harbor (areas 3, 6, 8, 14 and 19). Hours of operation are 24 hours a day Monday through Saturday. M/V Glenn Green can be contacted on VHF channels 13 and 16. All mariners are requested to transit the area with caution.

LNM: 34/23

**LAKE SUPERIOR – MN – Spirit Lake – Chart 14975**

From July 2022 to November 2023 J.F. Brennan Company, Inc will be conducting Hydraulic Dredging operations are to be conducted in this area, with a sunken dredge pipeline running north from near the Spirit Lake Marina to Hallett Dock #7 along the western shoreline of the St. Louis River. The pipeline will be demarcated with buoys along the entirety of the pipe, approximately every 500 FT. Floating booster pump platforms will be between Hallett Dock #7 and Spirit Lake Marina, with construction signage upstream and downstream of the work zone. The work zone will mainly be between Munger Landing and the island just to the east of the landing. Within the work zone, there will be several pieces of equipment along with floating dredge pipelines.

LNM: 26/22

---

---

**SECTION VIII - LIGHT LIST CORRECTIONS**

An Asterisk \*, indicates the column in which a correction has been made to new information

---



SECTION VIII - LIGHT LIST CORRECTIONS (Continued)

(1) No.	(2) Name and Location	(3) Position	(4) Characteristic	(5) Height	(6) Range	(7) Structure	(8) Remarks
20333	<i>Univ of Illinois Waukegon Weather Wave (45186) Buoy B</i>	42-22-01.920N 087-47-42.720W	Fl Y 4s				Maintained from Apr.1 to 35/23 Nov.1. Private Aid.
*	*	*	*	*	*	*	*
20397	<i>Univ of Illinois Winthrop Weather Wave (45187) Buoy A</i>	42-29-26.160N 087-46-44.040W	Fl Y 4s				Maintained from Apr.1 to 35/23 Nov.1. Private Aid.
*	*	*	*	*	*	*	*

---



---

**ENCLOSURES**

---

**(1) LNM Section I - Special Notices**

1-Great Lakes Water Levels

LNM: 06/22

**(2) LNM Section II - Discrepancies**

N/A

LNM: 19/19

**(3) LNM Section III - Temporary Changes and Temporary Changes Corrected**

N/A

LNM: 19/19

**(4) LNM Section IV - Chart Corrections**

N/A

LNM: 19/19

**(5) LNM Section V - Advance Notices**

N/A

LNM: 19/19

**(6) LNM Section VI - Proposed Changes**

N/A

LNM: 19/19

**(7) LNM Section VII - General**

1-Marine Events

2-Current Ninth District Bridge Maintenance/Activities

3-Waterway Analysis and Management System Survey

LNM: 19/19

**(8) LNM Section VIII - Light List Corrections**

N/A

LNM: 19/19

---



---

J. P. Hickey, RADM  
U. S. Coast Guard  
Commander, Ninth Coast Guard District

## GREAT LAKES, CONNECTING CHANNELS AND ST. LAWRENCE RIVER WATER LEVELS AND DEPTHS

Expected water levels on the Great Lakes, Connecting Channels and the St. Lawrence River are given in inches above (+,0) or below (-,0) Low-Water Datum (LWD,0). LWD is a plane of reference on a navigation chart, also known as Chart Datum. LWD elevations shown below are given in International Great Lakes Datum, 1985 (IGLD 1985,0).

	Forecast Point	Low Water Datum IGLD 1985	Expected Levels (inches above or below Low Water Datum,0)				
			Current	Week 1	Week 2	Week 3	Week 4
			25-Aug	1-Sep	8-Sep	15-Sep	22-Sep
<b>GREAT LAKES</b>							
Lake Ontario		243.3	39	37	34	32	29
Lake Erie		569.2	42	41	40	38	37
Lake St. Clair		572.3	43	41	40	38	36
Lake Michigan-Huron		577.5	27	27	26	26	25
Lake Superior		601.1	18	18	17	17	17
<b>ST. LAWRENCE RIVER</b>							
Above Long Sault Dam	0	237.9	24	23	21	19	15
Above Iroquois Dam	1	240.3	24	22	20	19	15
Ogdensburg	2	242.4	29	27	25	23	19
Alexandria Bay	2.1	243.0	31	29	28	27	24
Head of river at Cape Vincent	3	243.3	39	37	34	32	29
<b>DETROIT RIVER</b>							
Lake Erie at Pelee Passage	4	569.2	42	41	40	38	37
Mouth of River at Gibraltar	5	569.5	43	42	41	39	37
Fort Wayne	5.1	571.1	47	45	44	42	40
Head of River above Belle Isle	6	572.0	44	42	41	39	37
<b>ST. CLAIR RIVER</b>							
Mouth of River at St. Clair Flats	7	572.3	43	41	40	38	36
Algonac	8	572.8	45	44	42	40	39
St. Clair	9	574.4	39	39	37	33	32
Blue Water Bridge	10	576.2	34	34	33	35	33
Head of River at Fort Gratiot	11	577.2	28	27	28	27	27
Lake Huron Approach Channel	12	577.5	27	27	26	26	25
<b>ST. MARYS RIVER</b>							
Mouth of River at Detour	13	577.5	27	27	26	26	25
West and Middle Neebish	14	577.8	25	25	24	24	23
Head of Little Rapids	15	578.4	28	27	27	25	25
U.S. Slip	16	578.7	29	28	27	26	24
Above Locks	17	600.4	19	19	19	19	19
Head of River at Point Iroquois	18	601.1	18	18	17	17	17

### UNDERSTANDING THE FORECAST

Available water depth is determined for a location by adding (if+) or subtracting (if-) the amount from the above table to the appropriate channel depth shown in the profile Connecting Channel Depths Graphic or to water depths shown on National Oceanic and Atmospheric Administration (NOAA) navigational charts.

### CAUTION

Depths so determined are representative of a still water surface elevation, disturbed by neither wind nor other causes. Depths, however, may be reduced or increased as much as several feet for short periods due to these disturbances, or when sections of channels develop shoals. Vessel masters should refer to "Local Notice to Mariners" for extent of shoaling and scattered bedrock projections in all channels. Ice conditions can have a dramatic impact on actual channel depth and can lead to large short-term water level fluctuations. Ice information can be found at the National Ice Center's website.

FOR FURTHER INFORMATION CONTACT:	FOR MORE INFORMATION VISIT:	WATER LEVEL INFORMATION SUPPLIED BY:
Detroit District Corps of Engineers	<a href="#">Detroit District Great Lakes Homepage</a>	NOAA, National Ocean Service
477 Michigan Avenue	<a href="#">International Joint Commission</a>	SSMC4, STATION 7523
Detroit MI, 48226	<a href="#">Great Lakes Information Network</a>	1305 East-West Hwy
1-888-694-8318 ex. 1	<a href="#">NOAA Tides and Currents</a>	Silver Spring, MD 20910-3233
email: hhpm@usace.army.mil	<a href="#">U.S. Coast Guard - District 9</a>	(301) 713-2902

**GREAT LAKES-MARINE EVENT-SAFETY ZONES-SECURITY ZONES**

Events listed below are those events that may have accompanying special local regulations.

<b><u>Location</u></b>	<b><u>Name of Event</u></b>	<b><u>Date / Time</u></b>	<b><u>POC</u></b>	<b><u>Tel #</u></b>
Clayton/NY	Bassmaster Elite Series	8/24/2023-8/27/2023	0700-1700	Lisa Talmadge 505-550-4765
<b><u>LAKE ONTARIO</u></b>				
Pheonix, NY	Village of Pheonix Locktoberfest Fireworks	30-Sep-23	2030-2200	Joy Bartucci 443-630-5833
Rochester, NY	Genesee Yacht Club Saturday Morning Racing	05/27/2023 - 10/07/2023	0900-1400	Kenny Fourspring 585-902-2183
Rochester, NY	Genesee Yacht Club Tuesday Night Racing	05/23/2023 - 09/19/2023	1800-2100	Kenny Fourspring 585-902-2183
Rochester, NY	Brown Jug Afternoon Race	9/4/2023	1230/1530	Mary Ellen Brown 703-408-7298
Rochester, NY	RYC High School Sailing	9/5/2023 to 11/10/2023	0900/1700	Peter Mendick 585-342-5511
Rochester, NY	Thistle Sailboat Fall Frontier Regatta	9/9/2023 to 9/10/2023	0900/1500	Mary Ellen Brown 703-408-7298
Liverpool, NY	Hobie Wave North American Championship	9/12/2023 to 9/16/2023	0600/1900	David Witmer 315-380-4230
Rochester, NY	RYC Match Race	9/21/2023 to 9/24/2023	0900/1700	Peter Mendick 585-342-5511
Rochester, NY	RYC J24 Corinthian National Championship	10/4/2023 to 10/8/2023	0900/1700	Peter Mendick 585-342-5511
Rochester, NY	Head of the Genessee Regatta	10/7/2023 to 10/8/2023	0600/1800	Liana Spencer 585-967-8683
<b><u>LAKE ERIE</u></b>				
Buffalo, NY	Mafia Boat Parade	3-Sep-23	1200-1400	Ashleigh Dopp 716-570-0104
Sandusky	Sandusky Sailing Club -Wednesday Evening Race	8/30/2023	1830-2100	Tracy Girard (571) 607-7807.
Sandusky	Sandusky Sailing Club - Friday Night Laser Serie	9/1/2023	1800-2030	Tracy Girard (571) 607-7807.
Sandusky	Lakeside Chautauqua Labor Day Firework Displa	9/2/2023	2000-2100	Tracy Girard (571) 607-7807.
Sandusky	Funday Pursuit Race to PCYC	9/2/2023	100-1530	Tracy Girard (571) 607-7807.
Sandusky	Put-In-Bay Community Fireworks	9/3/2023	2130-2200	Tracy Girard (571) 607-7807.
Sandusky	Sandusky Sailing Club -Sunday Morning Race Se	9/3/2023	0930-1100	Tracy Girard (571) 607-7807.
Catawba	Catawba Island Club-Labor Day Fireworks	9/3/2023	2030-2200	Tracy Girard (571) 607-7807.
Cleveland, OH	Cleveland National Air Show	01, 02, 03, 04 Sep 2023	0745-1815	Leslie King 216-781-0747
Conneaut, OH	Conneaut Chamber of Commerce-Perch and Pilsner	09 Sep 2023	8:15-10:15	Joy Bartucci 443-630-5833
Lorain, OH	Cleveland Dragon Boat Festival	10 Sep 2023	0745-1715	Racheal Cambarare 440-320-8211
Cleveland, OH	Head of the Cuyahoga Regatta	16 Sep 2023	0745-1715	Jen Forbes 216-308-4183
<b><u>DETROIT RIVER</u></b>				
<b><u>LAKE ST. CLAIR/St. Clair River</u></b>				
Detroit	Michigan Triathlon Championships	9/3/2023	0730-0930	Tracy Girard (571) 607-7807.
Detroit	Grosse Point Sail Club Tuesday Night Series #13	9/5/2023	0700-2030	Tracy Girard (571) 607-7807.
Grosse Pointe Farms	Grosse Pointe Farms Fireworks (Rain date 9/3/20	9/2/2023	2130-2230	Tracy Girard (571) 607-7807.
Windsor	WYC Wednesday Night Fall Series #3	8/30/2023	1900-2230	Tracy Girard (571) 607-7807.
St. Clair Shores	Lake Shore Sail Club - Summer Sunset Series Rac	8/30/2023	1830-2200	Tracy Girard (571) 607-7807.
<b><u>LAKE HURON</u></b>				
Bay City	Bay City Yacht Club Sailboat Racing Wednesday	8/30/2023	1900-2200.	Tracy Girard (571) 607-7807.
Tawas	Tawas Bay Yacht Club Race Series #31	9/2/2023	1100-1600	Tracy Girard (571) 607-7807.
Tawas	Tawas Bay Yacht Club Race Series #32	9/3/2023	1100-1600	Tracy Girard (571) 607-7807.
Tawas	Tawas Bay Yacht Club Race Series #33	9/4/2023	1100-1600	Tracy Girard (571) 607-7807.
<b><u>LAKE MICHIGAN &amp; Green Bay</u></b>				
N/A				
<b><u>LAKE SUPERIOR</u></b>				
Duluth	Sailboat racing	19 Jul 2023-6 Sep 2023	1730-2030	Art Johnston 7153606629

**CURRENT NINTH DISTRICT BRIDGE MAINTENANCE/ACTIVITIES**  
**Week [35/23]**

**Note:** Short-term bridge maintenance closures and various activities may only be published [through Broadcast Notice to Mariners](#) and may not be included [in the Local Notice to Mariners](#). Mariners should both *listen* to Broadcast Notice to Mariners (BNM) and *read* Coast Guard Local Notice to Mariners (LNM) available by clicking [HERE](#) for the most recent and complete marine information.

We have moved all the subscribers from the email format to the new GovDelivery system. If you desire to be unsubscribed, you can visit [U.S. Coast Guard \(govdelivery.com\)](http://U.S.CoastGuard.gov/govdelivery.com) and manage your account or you can email us and we will remove your address from the list. If you are receiving two emails a week, please let me know and we will see what is happening.

There is a Microsoft Teams meeting with the US Coast Guard, Mariners, and Bridge Owners being held on the last Wednesday of every month, and **YOU** are welcome to join in.

**Join on your computer or mobile app**

[Click here to join the meeting](#)

**Or call in (audio only)**

[+1 410-874-6742,,515305017#](#)

Phone Conference ID: 515 305 017#

PUBLIC NOTICES FOR 9th District BRIDGES: <https://www.navcen.uscg.gov/D9BN>

**Please contact us with any questions or concerns:**

Blair Stanifer	(216) 902-6086 or <a href="mailto:William.B.Stanifer@uscg.mil">William.B.Stanifer@uscg.mil</a>
Lee Soule	(517) 607-4154 or <a href="mailto:Lee.D.Soule@uscg.mil">Lee.D.Soule@uscg.mil</a>
Michael Walker	(216) 902-6087 or <a href="mailto:Michael.O.Walker2@uscg.mil">Michael.O.Walker2@uscg.mil</a>
FAX:	(216) 902-6088

Commander (dpb)  
Ninth Coast Guard District  
1240 E. 9th St. Room 2047B  
Cleveland, Ohio 44199-2001

**NOTES:**

**ACTIVE BROADCAST NOTICE TO MARINERS (BNM)**

Get a text version of every Sector **Broadcast Notice to Mariners** on your computer or Mobil device all through our NAVCEN.GOV website. [Subscribe to Our RSS Feeds | Navigation Center \(uscg.gov\)](#)

District BNMs will be available after September 1st.

SAFETY BCST PLUS SKED BCST UNTIL 292200Z AUG 23  
U.S.C.G. NINTH DISTRICT NOTICE TO MARINERS C128-23  
NY - LAKE ERIE - NIAGARA RIVER  
FROM AUGUST 28, 2023, THROUGH JULY 26, 2026, SCAFFOLDING THAT EXTENDS

APPROXIMATELY 3-FEET BELOW LOW STEEL WILL BE INSTALLED UNDER THE SOUTH GRAND ISLAND BRIDGE AT MILE 3.40 AND THE NORTH GRAND ISLAND BRIDGE AT MILE 18, BOTH OVER THE NIAGARA RIVER. A 16-FOOT BY 32-FOOT MATERIALS BARGE AND A 4-FOOT BY 40-FOOT TEMPORARY DOCK WILL BE USED UNDER THE BRIDGES.

SAFETY BCST PLUS SKED BCST UNTIL 042200Z SEP 23

U.S.C.G. NINTH DISTRICT NOTICE TO MARINERS C131-23

IL- LAKE MICHIGAN -CALUMET HARBOR

FROM SEPTEMBER 1 THROUGH SEPTEMBER 30, 2023, BETWEEN THE HOURS OF 0700 AND 1800, DAILY, INSPECTORS WILL UTILIZE SNOOPER TRUCKS UNDER THE CHICAGO SKYWAY BRIDGE AT MILE 1.50 (CORPS MILE 331.7) OVER THE CALUMET RIVER. SPOTTERS WILL WARN OF APPROACHING VESSELS AND MOVE THE MAN LIFT SO VESSELS CAN PASS.

SAFETY BCST PLUS SKED BCST UNTIL 042200Z SEP 23

U.S.C.G. NINTH DISTRICT NOTICE TO MARINERS C132-23

MI - LAKE HURON - SAGINAW RIVER

FROM SEPTEMBER 1 THROUGH OCTOBER 3, 2023, BETWEEN THE HOURS OF 0700 AND 1800, MONDAY THROUGH SATURDAY, TWO 40-FOOT BY 20-FOOT BARGES AND TWO 80-FOOT BY 60-FOOT BARGES WILL BE REPAIRING RIP RAP AROUND THE I-75 BRIDGE MILE 14.61 OVER THE SAGINAW RIVER. THE BARGES WILL MONITOR VHF-FM MARINE CHANNEL 16 AND MOVE IF A 1-HOUR ADVANCE NOTICE IS PROVIDED.

SAFETY BCST PLUS SKED BCST UNTIL 042200Z SEP 23

U.S.C.G. NINTH DISTRICT NOTICE TO MARINERS C133-23

IL- LAKE MICHIGAN -CALUMET HARBOR

FROM AUGUST 28, THROUGH SEPTEMBER 15, 2023, BETWEEN THE HOURS OF 0600 AND 1800, MONDAY THROUGH SATURDAY, A 30-FOOT BY 120-FOOT BARGE WILL BE WORKING UNDER THE INDIANA AVENUE BRIDGE AT MILE 10.80 OVER THE LITTLE CALUMET RIVER. THE TUG MEGHAN B WILL MONITOR VHF-FM MARINE CHANNEL 16 AND MOVE THE BARGE WITH A 1-HOUR ADVANCE NOTICE.

SAFETY BCST PLUS SKED BCST UNTIL 312100Z AUG 23

U.S.C.G. NINTH DISTRICT NOTICE TO MARINERS C134-23

OH- LAKE ERIE - CLEVELAND HARBOR

ON AUGUST 31, 2023, BETWEEN THE HOURS OF 0700 AND 1700, THE CARTER ROAD BRIDGE AT MILE 2.43 OVER THE CUYAHOGA RIVER WILL REQUIRE A 30-MINUTE ADVANCE NOTICE FOR OPENINGS BECAUSE A SNOOPER TRUCK WILL BE INSPECTING THE BRIDGE. SPOTTERS WILL WARN OF APPROACHING VESSELS AND MOVE THE MAN LIFT FOR VESSELS THAT CAN PASS UNDER THE BRIDGE WITHOUT AN OPENING.

### **FEDERAL REGULATIONS DOCKET STATUS**

USCG-2022-0237 - FR – Keweenaw Waterway – to Legal Review and Command Approval

USCG-2023-0113 - FR - Cheboygan River – to Legal Review and Command Approval

USCG-2023-0183 - FR – River Rouge – to Legal Review and Command Approval

USCG-2023-0184 - FR – Maumee River – to Legal Review and Command Approval

USCG-2023-0185 - FR – Sandusky Bay – to Legal Review and Command Approval

USCG-2023-0186 - FR – Portage River – to Legal Review and Command Approval

USCG-2023-0187 - FR – Black River – to Legal Review and Command Approval

USCG-2023-0188 - FR – Cuyahoga River – to Legal Review and Command Approval

**ACTIVE LOCAL NOTICE TO MARINERS (LNM)**

**GREAT LAKES REGION**

**GREAT LAKES, Drawbridge Delay Reports, Chart 14500**

Mariners are requested to submit Reports of Drawbridge Signal/Operations Delays directly to the Ninth Coast Guard District Bridge Branch using the attached form. Reports of signal or drawbridge delays have been processed by Coast Guard Marine Safety Offices in recent years but will now be processed and traced by the Bridge Branch. Reports may be sent by mail, e-mail, or by fax. The mailing address and fax number are on the form. The updated form is printed and also attached on the last page of this list.

[08/05] [34/12]

**ST. LAWRENCE SEAWAY**

**NY STATE CANAL SYSTEM**

(Everything West of St. Johnsville, NY)

**NEW YORK STATE CANAL SYSTEM – NY - Erie Canal – Chart 14786**

From April 1, 2023, through **July 1, 2024**, snooper trucks will be working under the E-182 Main Street Bridge, mile 278.93, over the Erie Canal to rehabilitate the bridge in the fully open position. The permitted navigation lights will be removed and temporarily replaced with steady burning yellow lights on the bottom and four-corners of the drawspan. Spotters will warn of approaching vessels and move the man lift to allow vessels to pass.

[12/22]

**NEW YORK STATE CANAL SYSTEM – NY - Erie Canal – Chart 14786**

From May 15 through **September 15, 2023**, between the hours of 0730 and 1700, Monday through Friday a 35-foot Harcon Inspection Vessel will be working under the O4 Culvert Street at mile 2.19 over the Oswego Canal, the bridges between the E-60 Higginsville Rd Bridge, mile 126.04, and the E-92, Armitage Road Bridge, mile 205.59, over the Erie Canal, and the S1 US 20 Bridge at mile 2.97 and the S7 Bridge Street Bridge, mile 8.90 over the Cayuga Seneca Canal. The Harcon will monitor VHF-FM Marine Channel 16 and will move if provided a 15-min advance notice of arrival.

[17/23]

**NEW YORK STATE CANAL SYSTEM – NY - Erie Canal – Chart 14786**

From July 10 through **October 15, 2023**, between the hours of 0600 and 1800 Monday through Friday a 30-foot Harcon bridge inspection vessel will be inspecting all bridges from E96, Lyons-Mar Road Bridge at Mile 217.76 to the E212, Marshall Road Bridge at Mile 305.63. The Harcon will monitor VHF- FM marine channel 16 and will move with a 15-minute advance notice.

[27/23]

**\*\*\*\*\*REVISED\*\*\*\*\***

**NEW YORK STATE CANAL SYSTEM – NY - Erie Canal – Chart 14786**

From August 4, 2023, through **October 31, 2023**, between the hours of 0900 and 1500, workers will be using snooper trucks under the E32 State Route 167 Bridge at Mile 79.74 over the Erie Canal to preform scheduled maintenance. Spotters will warn of approaching vessels and move the man lift to allow vessels to pass.

[31/23] [34/23]

## LAKE ONTARIO

### **LAKE ONTARIO – NY – Rochester Harbor – Chart 14815**

On **September 24, 2023**, between the hours of 0745 and 0930, the O'Rourke Bridge at Mile 1.25 over the Genesee River will be secured to masted navigation in conjunction with the Rochester Marathon. Vessels able to pass under the bridge without an opening may do so at any time.

[08/23]

### **LAKE ONTARIO – NY – Rochester Harbor – Chart 14811**

From September 11 through **October 1, 2023**, daily, works will be removing the PL49 Black River Pipeline Bridge at approximate Mile 8 over the Black River. Spotters will warn of approaching vessels and suspend overhead work until the river is clear.

[34/23]

## LAKE ERIE - MAHONING RIVER - NIAGARA RIVER- ALLEGHENY RIVER

\*\*\*\*\*REVISED\*\*\*\*\*

### **LAKE ERIE – OH – Toledo Harbor – Chart 14847**

From July 1, 2019, through **September 18, 2023**, a temporary causeway will be constructed between mile 6.73 and 6.76 for the construction of the new and demolition of the old Michael V. DiSalle Memorial (I-75) Bridge at Mile 6.73 over the Maumee River. The causeway will be marked with flashing yellow lights spaced approximately 10 meters apart with red over red lights marking the ends of the causeway. A 100-foot-wide channel will be provided for vessels to pass through the construction area. Mariners are encouraged to pass through the area at a slow speed.

[26/19] [21/20] [14/23]

### **LAKE ERIE – OH – Toledo Harbor – Chart 14847**

From September 18 through **September 22, 2023**, between the hours of 0800 and 1700 daily, inspectors will be using snooper vehicles at the Craig Memorial Bridge at Mile 3.30 over the Maumee River. The bridge will require a 30-minute advance notice except on Tuesday and Wednesday when a 3-hour advance notice will be required. Mariners should provide the advance notice directly to the drawtender on VHF-FM Marine Channel 16 or by calling 419-373-4306.

[24/23]

### **LAKE ERIE – NY – Buffalo Harbor – Chart 14833**

The Coast Guard has received a report that scaffolding that hangs approximately 10-feet below low steel will be installed on the Canadian side of the Canadian National International Bridge at Mile 1.5 over the Niagara River from July 31, 2023, through **November 30, 2023**. The U.S. side will remain clear of any equipment.

[26/23]

### **LAKE ERIE – NY – Buffalo Harbor – Chart 14833**

From January 1 through **March 31, 2024**, the Canadian National International Railroad Bridge at mile 3.8 over the Black Rock Canal will be secured to masted navigation for maintenance. Vessels able to pass under the bridge without an opening may do so at any time.

[30/23]

### **LAKE ERIE – NY – Buffalo Harbor – Chart 14833**

From January 1 through **March 31, 2025**, the Canadian National International Railroad Bridge at mile 3.8 over the Black Rock Canal will be secured to masted navigation for maintenance. Vessels able to pass under the bridge without an opening may do so at any time.

[30/23]

**LAKE ERIE – NY – Cleveland Harbor – Chart 14839**

On **October 7, 2023**, between the hours of 0700 and 1400, the Carter Road Bridge at Mile 2.43 over the Cuyahoga River will be secured to masted navigation in conjunction with the Towpath Marathon. Vessels able to pass under the bridge without an opening may do so at any time.

[32/23]

**LAKE ERIE – NY – Niagara River – Chart 14833**

From August 28, 2023, through **July 26, 2026**, scaffolding that extends approximately 3-feet below low steel will be installed under the South Grand Island Bridge at Mile 3.40 and the North Grand Island Bridge at Mile 18, both over the Niagara River. A 16-foot by 32-foot materials barge and a 4-foot by 40-foot temporary dock will be used under the bridges.

[32/23]

**LAKE ERIE – OH – Toledo Harbor – Chart 14846**

On **September 17, 2023**, between the hours of 0930 and 1130, the Martin Luther King Jr. Memorial Bridge at Mile 4.30 over the Maumee River will be secured to masted navigation in conjunction with the Run for Pro Medica. Vessels able to pass under the bridge without an opening may do so at any time.

[34/23]

**LAKE ERIE – NY – Cleveland Harbor – Chart 14839**

On **September 14, 2023**, between the hours of 0700 and 1700, the Willow Avenue Bridge at Mile 1.02 over the Old River Channel of the Cuyahoga River, will require a 1-hour advance notice for openings. A snooper truck will be working under the bridge and spotters will warn of approaching vessels and move the manlift to vessels may pass.

[34/23]

**LAKE ERIE – NY – Cleveland Harbor – Chart 14839**

On **August 31, 2023**, between the hours of 0700 and 1700, the Carter Road Bridge at Mile 2.43 over the Cuyahoga River will require a 30-minute advance notice for openings because a snooper truck will be inspecting the bridge. Spotters will warn of approaching vessels and move the man lift for vessels that can pass under the bridge without an opening.

[34/23]

**DETROIT RIVER - LAKE ST. CLAIR - ST. CLAIR RIVER – RIVER ROUGE**

\*\*\*\*\*REVISED\*\*\*\*\*

**DETROIT RIVER – MI – Main Channel – Chart 14848**

From November 1, 2022, through **August 30, 2024**, contractors will be constructing the Gordie Howe International Bridge at mile 16.7 over the Detroit River. No equipment will be placed in the water. Overhead work will have temporary steady burning yellow lights to mark new construction. A moving platform with quick flashing red lights and orange or red ball fenders on the bottom four corners with a safety net that hangs approximately 15-feet below low steel will be constructing the bridge. Mariners should avoid passing directly under the platform at any time. Snooper type vehicles will be utilized on the bridge throughout construction. Spotters will warn of approaching vessels and move the man lift to allow vessels to pass. When construction is completed and all equipment removed, the final vertical clearances for the bridge will be 152-feet for the center 100-feet of the navigation channel. No less than 137-feet of vertical clearance will be available at the channel limits. Vertical clearances are based on IGLD85.

[47/20] [07/22]

\*\*\*\*\*REVISED\*\*\*\*\*

**DETROIT RIVER – MI – Belle Island – Chart 14848**

From March 1, 2023, through **October 31, 2023**, between the hours of 0700 and 1900, Monday through Saturday, eight barges 150-feet by 60-feet or smaller will be working under the MacArthur Bridge at Mile 24.0



over the Detroit River. The barge under the navigation span will monitor VHF-FM Channel 16 and will move to accommodate vessels if a 15-minute advance notice is provided. For additional safety the barges will be equipped with flashing yellow lights one meter apart. The green navigation light in the drawspan occupied with equipment will be extinguished.

[37/22] [20/23]

#### **St. Clair River – MI – Pine River – Chart 148**

From October 23 through **October 27, 2023**, between the hours of 0800 and 1700 daily, inspectors will be using snoopers at the Craig Memorial Bridge at Mile 3.30 over the Maumee River. The bridge will require a 30-minute advance notice except on Tuesday and Wednesday when a 3-hour advance notice will be required. Mariners should provide the advance notice directly to the drawtender on VHF-FM Marine Channel 16 or by calling 810-329-9420.

[24/23]

#### **LAKE HURON**

\*\*\*\*\*REVISED\*\*\*\*\*

#### **LAKE HURON - MI – Saginaw River – Chart 14867**

From April 24 through **December 1, 2023**, the Independence Street Bridge at Mile 3.88 over the Saginaw River will require a 2-hour advance notice for openings. Two barges 80-foot by 40-foot or smaller will be working under the bridge. The barges will move with a 2-hour advance notice. Mariners should provide advance notice for the bridge or barges by calling 608-425-0171.

[15/23] [34/23]

#### **LAKE HURON - MI – Saginaw River – Chart 14867**

From December 1, 2023, through **March 31, 2024**, the Independence Street Bridge at Mile 3.88, over the Saginaw River will be secured to masted navigation. Vessels able to pass under the bridge without an opening may do so at any time. Two barges 80-foot by 40-foot or smaller will be working under the bridge. The barges will move with a 2-hour advance notice. Mariners should provide advance notice for the bridge or barges by calling 608-425-0171.

[17/23]

#### **LAKE HURON - MI – Saginaw River – Chart 14867**

From July 31, through **September 30, 2023**, between the hours of 0700 to 1900, Monday through Saturday the Liberty Street Bridge at Mile 4.99 over the Saginaw River will require a 2-hour advance notice for openings. Vessels should provide advance notice by calling 608-425-0171. A 60-foot by 40-foot barge will be working under the bridge and will move if a 2-hour advance notice is provided by calling 608-425-0171.

[29/23]

#### **LAKE HURON - MI – Saginaw River – Chart 14867**

from September 1 through **October 3, 2023**, between the hours of 0700 and 1800, Monday through Saturday, two 40-foot by 20-foot barges and two 80-foot by 60-foot barges will be repairing rip rap around the I-75 Bridge mile 14.61 over the Saginaw River. The barges will monitor VHF-FM Marine Channel 16 and move if a 1-hour advance notice is provided.

[30/23]

#### **LAKE HURON - MI – Saginaw River – Chart 14867**

October 3 through **October 15, 2023**, between the hours of 0700 and 1800, Monday through Saturday, two 40-foot by 20-foot barges and two 80-foot by 60-foot barges will be repairing rip rap around the I-675 Bridge mile 18.38 over the Saginaw River. The barges will monitor VHF-FM Marine Channel 16 and move if a 1-hour advance notice is provided.

[30/23]

## STRAITS OF MACKINAC, SAINT MARY'S RIVER AND FALLS

### LAKE MICHIGAN – EAST

\*\*\*\*\*REVISED\*\*\*\*\*

#### **LAKE MICHIGAN – MI – Charlevoix Harbor – Chart 14942**

From 0700 on January 1, 2024, through 0700 on **March 31, 2024**, the US 31 Bridge Street Bridge, over the Pine River will be secured to masted navigation. Vessels able to pass under the bridge without an opening may do so at any time.

[32/22] [33/22]

\*\*\*\*\*REVISED\*\*\*\*\*

#### **LAKE MICHIGAN – MI – Manistee Harbor – Chart 14938**

From December 1, 2023, through **April 1, 2024**, the US 31 Bridge at Mile 1.4 over the Manistee River will be secured to masted navigation. Vessels able to pass under the bridge without an opening may do so at any time. From June 26 through December 1, 2023, between the hours of 0700 and 1930 Monday through Saturday, two 30-foot by 40-foot barges will be working under the bridge. The barges will move to accommodate large vessels with a 30-minute advance notice provided directly to the barge by calling 269-720-5424 or 269-941-3431. From December 1 through April 1, 2024, scaffolding that hangs approximately 4-feet below low steel will be installed under the bridge.

[25/23] [26/23]

### LAKE MICHIGAN – MICHIGAN CITY & INDIANA HARBOR & GARY HARBOR

#### **LAKE MICHIGAN – IL – Indiana Harbor – Chart 14927**

From September 25 through **October 11, 2023**, between the hours of 2100 and 0500, Monday through Saturday, the Elgin, Joliet, and Eastern Railroad Bridge at Mile 0.68 over the Indiana Harbor Canal will be secured to masted navigation. Vessels able to pass under the bridge without an opening may do so at any time.

[33/23]

### LAKE MICHIGAN – CALUMET RIVER & LITTLE CALUMET RIVER

\*\*\*\*\*REVISED\*\*\*\*\*

#### **LAKE MICHIGAN – IL – Calumet Harbor – Chart 14927**

From February 21 through **August 31, 2023**, between the hours of 0700 and 1600 Monday through Friday the 100<sup>th</sup> Street Bridge at Mile 1.78, over the Calumet River will require a 1-hour advance notice for two leaf openings. Mariners should provide advance notice directly to the drawtender on VHF-FM Marine Channel 16.

[11/23] [28/23]

#### **LAKE MICHIGAN – IL – Calumet Harbor – Chart 14927**

From September 1 through **September 30, 2023**, between the hours of 0700 and 1800, daily, inspectors will utilize snooper trucks under the Chicago Skyway Bridge at Mile 1.50 (CORPS MILE 331.7) over the Calumet River. Spotters will warn of approaching vessels and move the man lift so vessels can pass.

[28/23]

#### **LAKE MICHIGAN – IL – Calumet Harbor – Chart 14927**

From July 20 through **September 1, 2023**, between the hours of 0600 and 1800, Monday through Friday a 30-foot by 90-foot barge will be working under the Chicago Skyway Bridge at Mile 1.50 (CORPS MILE 331.7) over the Calumet River. The barge will monitor VHF-FM marine channel 16 and will move to accommodate vessel traffic.

[29/23]

**LAKE MICHIGAN – IL – Calumet Harbor – Chart 14927**

From August 21 through **September 1, 2023**, between the hours of 0700 and 1530, Monday through Friday the 92<sup>nd</sup> Street Bridge at Mile 0.76 (CORPS MILE 332.4) over Calumet River will require a 2-hour advance notice for 2-leaf operations. One leaf will operate on demand. Mariners should provide advance notice directly to the drawtender.

[32/23]

**LAKE MICHIGAN – IL – Calumet Harbor – Chart 14927**

From August 28, through **September 15, 2023**, between the hours of 0600 and 1800, Monday through Saturday, a 30-foot by 120-foot barge will be working under the Indiana Avenue Bridge at Mile 10.80 over the Little Calumet River. The TUG MEGHAN B will monitor VHF-FM Marine Channel 16 and move the barge with a 1-hour advance notice.

[34/23]

**LAKE MICHIGAN – IL – Calumet Harbor – Chart 14927**

From September 7, 2023, through **May 22, 2024**, scaffolding will be installed under the Indiana Avenue Bridge at Mile 10.80 (CORPS MILE 322.3) over the Little Calumet River that hangs approximately 1-foot below low steel.

[34/23]

**CHICAGO RIVER – MAIN RIVER CHANNEL, NORTH BRANCH, NORTH SHORE CHANNEL, AND SOUTH BRANCH AND SOUTH FORK OF SOUTH BRANCH**

**LAKE MICHIGAN – IL – Chicago Harbor – Chart 14927**

From June 1, through **November 1, 2023**, the Dearborn Street Bridge at Mile 1.13 (CORPS MILE 326.1) over the Main Branch of the Chicago River will have one leaf secured to masted navigation and an 80-foot by 20-foot barge under the bridge. The barge will move if a 1-hour advance notice is provided on VHF-FM Marine Radio Channel 16.

[21/23]

**LAKE MICHIGAN – IL – Chicago Harbor – Chart 14927**

From August 15 through **September 22, 2023**, between the hours of 0600 and 1800, daily a 30-foot Harcon Bridge inspection vessel will be working under all bridges over the Main Branch and South Branch to include the bridges of the North Branch up to the Belmont Avenue Bridge at Mile 6.76 (CORPS MILE 330.6) over the Chicago River Branches. The Harcon will monitor VHF-FM Marine Channel 16 and will move to accommodate vessels if a 15-minute advance notice is provided.

**LAKE MICHIGAN – IL – Chicago Harbor – Chart 14927**

From July 25 through **September 30, 2023**, between the hours of 0700 and 1900 Monday through Friday a 125-foot x 35-foot barge will be working under the Roosevelt Road Bridge at Mile 2.94 (CORPS MILE 324.3) over the South Branch of the Chicago River. The barge will move if a 1-hour advance notice is provided to the Chicago Bridge Desk or directly to the barge on VHF-FM Marine Channel 16.

[30/23]

**CALUMET SAG CHANNEL**

**LAKE MICHIGAN – IL – Calumet-SAG Channel – Chart 14927**

From May 1, through **November 1, 2023**, scaffolding that hangs approximately 6-feet below low steel will be installed under the Sag Highway Bridge at Mile 28.76 (CORPS MILE 304.2) over the Calumet-SAG Channel.

[03/23]

**CHICAGO SANITARY AND SHIP CANAL, KANKAKEE RIVER & ROCK RIVER**

(Lake Michigan to Mile 36.2/291.1)

## LAKE MICHIGAN – WEST

### **LAKE MICHIGAN – WI – Racine Harbor – Chart 14925**

From December 1, 2023, through **April 1, 2024**, the State Street Bridge at Mile 0.53 over the Root River will be secured to masted navigation and scaffolding that hangs approximately 4-feet below low steel will be installed under the bridge. Vessels that can safely pass under the bridge without an opening may do so at any time.

[43/22]

\*\*\*\*\*REVISED\*\*\*\*\*

### **LAKE MICHIGAN – WI – Milwaukee Harbor – Chart 14924**

from May 1 through **November 30, 2023**, coffer dams will be installed around the piers of the Holton Street Bridge, mile 2.84, over the Milwaukee River that extend into the channel 5-feet on each side for a total reduction in horizontal clearance of 10-feet in total. Three barges 70-feet by 50-feet or smaller will be working under the bridge, A 20-foot channel will be maintained through the project but larger vessel may call 262-366-5121 and request the barges to move with a 2-hour advance notice.

[17/23] [33/23]

### **LAKE MICHIGAN – MI – Milwaukee Harbor – Chart 14924**

On **October 1, 2023**, between the hours of 0630 and 0900 the Wisconsin Avenue Bridge at Mile 1.46 over the Milwaukee River will be secured to masted navigation in conjunction with the Milwaukee Marathon. Vessels able to pass under bridge without an opening.

[31/23]

## LAKE MICHIGAN – Sturgeon Bay Ship Canal – Green Bay – Fox River – Wolf River

\*\*\*\*\*REVISED\*\*\*\*\*

### **LAKE MICHIGAN – WI – Fox River – Chart 14972**

From April 1, 2023, through **September 1, 2023**, scaffolding that hangs approximately 3-feet below low steel will be installed under the Tower Driver / Leo Figaro Bridge at Mile 0.41 over the Fox River.

[11/22] [11/23]

### **LAKE MICHIGAN – WI – Fox River – Chart 14916**

On **September 30, 2023**, between the hours of 0800 and 1000, the Racine Street Bridge at Mile 37.91 over the Fox River will be closed to masted navigation in conjunction with the 43rd Annual Grunski Runski Marathon. Vessels able to pass under the bridge without an opening may do so at any time.

[20/23]

## LAKE SUPERIOR

### **LAKE SUPERIOR – MN – Duluth Superior Harbor – Chart 14975**

From July 5 through **November 15, 2023**, between the hours of 0800 and 2000, Monday through Friday three 32-foot by 120-foot or smaller barges will be drilling bore holes near the John A. Blantnik Bridge at Mile 2.74 over the St. Louis Bay and River just outside of the navigation channel. The barges will monitor VHF-FM Marine Channel 16.

[26/23]

### **LAKE SUPERIOR – MI – Keweenaw Waterway – Chart 14972**

On **September 16, 2023**, between the hours of 1045 and Noon, the US 41 Bridge mile 16 over the Keweenaw

Waterway will be secured to masted navigation in the intermediate position in conjunction with the Parade of Nations Event. Vessels able to pass under the bridge without an opening may do so at any time.

[35/23]

**RAINY LAKE, RAINY RIVER, LAKE OF THE WOODS, WISCONSIN RIVER, MISSISSIPPI RIVER, & RED RIVER OF THE NORTH**

(Revised 04/23) NINTH DISTRICT DRAWBRIDGE SIGNALS OR OPERATIONAL DELAYS FORM

TO: Commander (dpb)  
Ninth Coast Guard District  
1240 E. 9<sup>th</sup> Street – Room 2047b  
Cleveland, Ohio 44199-2060  
Phone: (216) 902-6087  
Fax: (216) 902-6088  
E-Mail: [William.B.Stanifer@uscg.mil](mailto:William.B.Stanifer@uscg.mil), [Lee.D.Soule@uscg.mil](mailto:Lee.D.Soule@uscg.mil), and [Michael.O.Walker2@uscg.mil](mailto:Michael.O.Walker2@uscg.mil)

DATE: \_\_\_\_\_  
*NOTE: Reports of Delay will be processed only when all items are fully addressed and reports submitted within 15 days of reported delay / difficulty. Attach additional sheets if necessary.*

CONFIDENTIALITY: Please check here if you wish to keep names of vessels and persons confidential

1. DATE OF DELAY: \_\_\_\_\_ 2. VESSEL NAME: \_\_\_\_\_ 3.  INBOUND  OUTBOUND

(\*\*\*NOTE: You must provide the following from Coast Pilot 6.\*\*\*)

4. BRIDGE NAME \_\_\_\_\_ 5. WATERWAY \_\_\_\_\_

6. MILE MARKER \_\_\_\_\_

7. WHAT TIME DID YOU ARRIVE AT THE BRIDGE? \_\_\_\_\_ 8. DID YOU SIGNAL FOR AN OPENING AT THAT TIME?  Y  N

9. HOW DID YOU SIGNAL?  Sound signal (Whistle, horn, megaphone, hailer, etc.) \_\_\_\_\_

(Check all that apply)  Visual signal (Flag or Light) \_\_\_\_\_

Radio telephone (Specify Frequency) \_\_\_\_\_

10. WHEN DID THE BRIDGE REPLY? \_\_\_\_\_ 11. WHAT DID THE DRAWTENDER SAY? \_\_\_\_\_

12. DID YOU COMMUNICATE WITH THE BRIDGE AFTER YOUR ARRIVAL? PLEASE PROVIDE DETAILS INCLUDING TIMES, WHAT YOU SAID, AND WHAT THE BRIDGE SAID? \_\_\_\_\_

13. WHAT TIME DID THE BRIDGE OPEN? \_\_\_\_\_ 14. WHAT TIME DID YOU START THROUGH? \_\_\_\_\_

15. WHAT TIME DID YOU CLEAR? \_\_\_\_\_ 16. WHAT ACTIONS DID YOU TAKE WHILE YOU WAITED FOR THE BRIDGE TO OPEN (e.g. tie up, hold position, use thrusters, return to dock)? \_\_\_\_\_

17. DESCRIBE ANY WEATHER OR WATER CONDITIONS THAT AFFECTED MANUEVERABILITY WHILE YOU WAITED? \_\_\_\_\_

18. DESCRIBE WHETHER ANY PEDESTRIANS, VEHICLES, OR TRAINS WERE STOPPED ON THE BRIDGE OR CROSSING THE BRIDGE? PROVIDE AS MUCH DETAIL AS POSSIBLE. \_\_\_\_\_

19. PROVIDE ANY ADDITIONAL INFORMATION YOU THINK WOULD BE HELPFUL? \_\_\_\_\_

20. YOUR NAME, E-MAIL, PHONE NUMBER, AND ADDRESS: \_\_\_\_\_

\_\_\_\_\_  
SIGNATURE OF REPORTING SOURCE





## MICHIGAN DEPARTMENT OF NATURAL RESOURCES

### INTEROFFICE COMMUNICATION

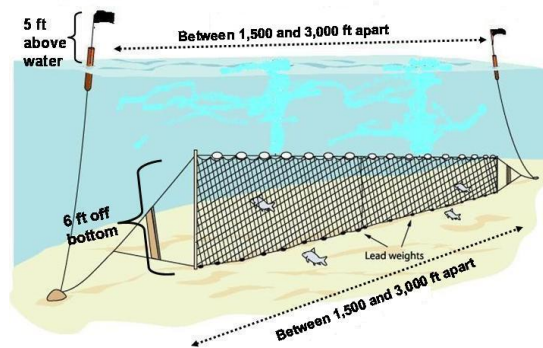
28 July 2023

TO: Natural resource agency personnel and mariners operating on Lake Superior

FROM: Shawn P. Sitar, Fisheries Research Biologist, Marquette Fisheries Research Station, Fisheries Division

SUBJECT: R/V Lake Char operations in Lake Superior 01 August-01 September 2023

This is a note to inform you that we will be conducting our annual summer lake trout gill net survey aboard the Research Vessel *Lake Char* in Lake Superior starting 01 August and should finish by 01 September. We will be setting bottom set gill nets that are between 1,200 to 2,400 ft long, extend about 6 feet from the bottom and are set overnight. Our sampling stations are generally 80 to 250 deep and within a few miles from shore. Our nets are marked with black and orange flagged staff buoys that are labeled with our agency identification.



We will be conducting our survey in the following areas of Lake Superior: west of Keweenaw Peninsula from Black River Harbor to Copper Harbor; outer Keweenaw Bay from Bete Grise to the Huron Islands; Big Bay; Marquette; Au Train, Munising, and Grand Marais.

Attached is the cruise schedule, map, and sampling station coordinates for the summer lake trout survey. Please provide copies of this cruise schedule to all pertinent personnel. Please note that we can be reached via MIDNR 800 MHz Radios on our primary radio channel on Zone B,



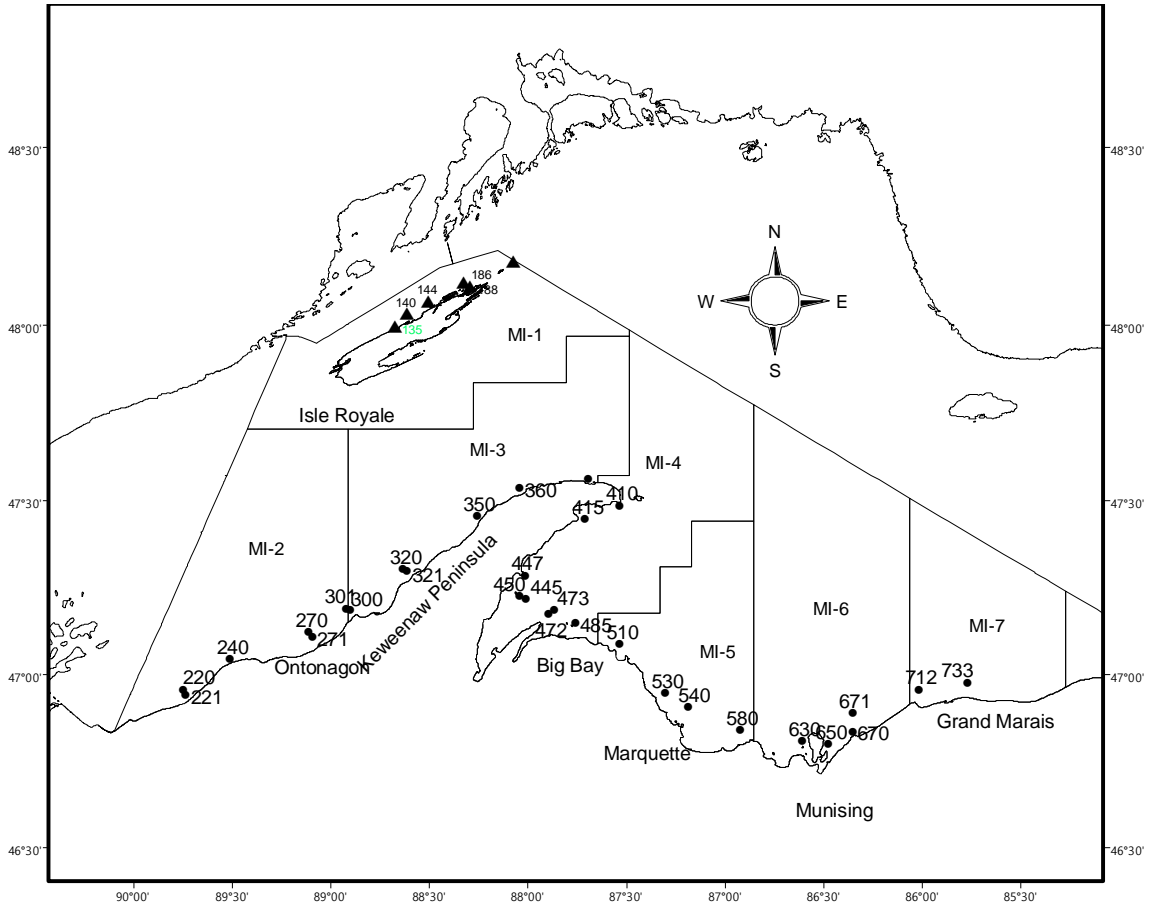
FIMARQT, or via marine radio channel 16. Our radio call sign is *R/V Lake Char*. We can also be reached on the vessel via cell phone number 906-458-6925.

If you have any questions regarding our sampling schedule, please feel free to contact me by e-mail at [sitars@michigan.gov](mailto:sitars@michigan.gov) or by cell phone at (906)-235-1581. Thank you for your cooperation.

Attachment

**2023 summer lake trout survey schedule for Marquette Fisheries Research Station (MFRS), Fisheries Division, Michigan Department of Natural Resources.**

<b>MIDNR-R/V Lake Char 2023 Summer lake trout survey station positions.</b>						
<b>Dates</b>	<b>lat</b>	<b>Column2</b>	<b>Station_no</b>	<b>site</b>	<b>latitude</b>	<b>longitude</b>
08/01 -		08/02/2023	530	Garlic Island	46°42.32"N	87°28.27"W
08/01 -		08/02/2023	510	Big Bay Point	46°53.09"N	87°43.03"W
08/01 -		08/02/2023	540	Granite Point (Pinnacle)	46°39.21"N	87°20.95"W
08/02 -		08/03/2023	485	Huron Islands (graded mesh)	46°57.63"N	87°57.17"W
08/02 -		08/03/2023	473	Point Abbaye (out)(graded mesh)	47°00.50"N	88°03.86"W
08/03 -		08/04/2023	445	Halberg's Reef	47°02.91"N	88°13.03"W
08/03 -		08/04/2023	447	Traverse Point	47°08.02"N	88°13.18"W
08/03 -		08/04/2023	450	Traverse Island (south)	47°03.60"N	88°15.03"W
08/07 -		08/08/2023	300	Fourteen Mile Point (in)	47°00.38"N	89°09.40"W
08/07 -		08/08/2023	301	Fourteen Mile Point (out)	47°00.80"N	89°10.65"W
08/08 -		08/09/2023	220	Black River Harbor (out)	46°43.00"N	90°02.77"W
08/08 -		08/09/2023	221	Black River Harbor (in)	46°41.90"N	90°01.98"W
08/08 -		08/09/2023	240	Porcupine Mountains	46°49.85"N	89°47.82"W
08/09 -		08/10/2023	270	Ontonagon (out)	46°55.75"N	89°22.57"W
08/09 -		08/10/2023	271	Ontonagon (in)	46°54.63"N	89°21.50"W
08/10 -		08/11/2023	320	Freda (out) (graded mesh)	47°09.53"N	88°52.25"W
08/10 -		08/11/2023	321	Freda (in) (graded mesh)	47°09.00"N	88°51.00"W
08/10 -		08/11/2023	350	Hills Creek	47°21.05"N	88°28.62"W
08/14 -		08/15/2023	360	Great Sand Bay	47°27.10"N	88°15.00"W
08/14 -		08/15/2023	370	Copper Harbor	47°29.00"N	87°52.93"W
08/15 -		08/16/2023	410	Keystone Bay	47°23.26"N	87°42.93"W
08/15 -		08/16/2023	415	Point Isabelle (South Point)	47°20.39"N	87°53.93"W
08/28 -		08/29/2023	580	Laughing Fish Point	46°34.19"N	87°04.39"W
08/29 -		08/30/2023	650	Trout Point A	46°32.00"N	86°35.57"W
08/29 -		08/30/2023	630	Wood Island (graded mesh)	46°31.76"N	86°44.32"W
08/30 -		08/31/2023	670	Grand Portal Point (in)	46°33.88"N	86°28.32"W
08/30 -		08/31/2023	671	Grand Portal Point (out)	46°37.96"N	86°28.22"W
08/31 -		09/01/2023	712	Au Sable Point	46°43.02"N	86°07.04"W
08/31 -		09/01/2023	733	Perry's Landing (graded mesh)	46°44.58"N	85°51.26"W



Research Vessel Lake Char, MIDNR summer lake trout survey stations.

## Summer 2023 Saildrone Ops on lakes Erie, Michigan, and Huron

### *Lake Erie mission*

AIS identifier: "SD-1080"

MMSI: 338431586

Description: Bright orange Sailboat, with rigid sail, clearly marked with 'Saildrone'; remotely helmed from command centers in three locations around the world.

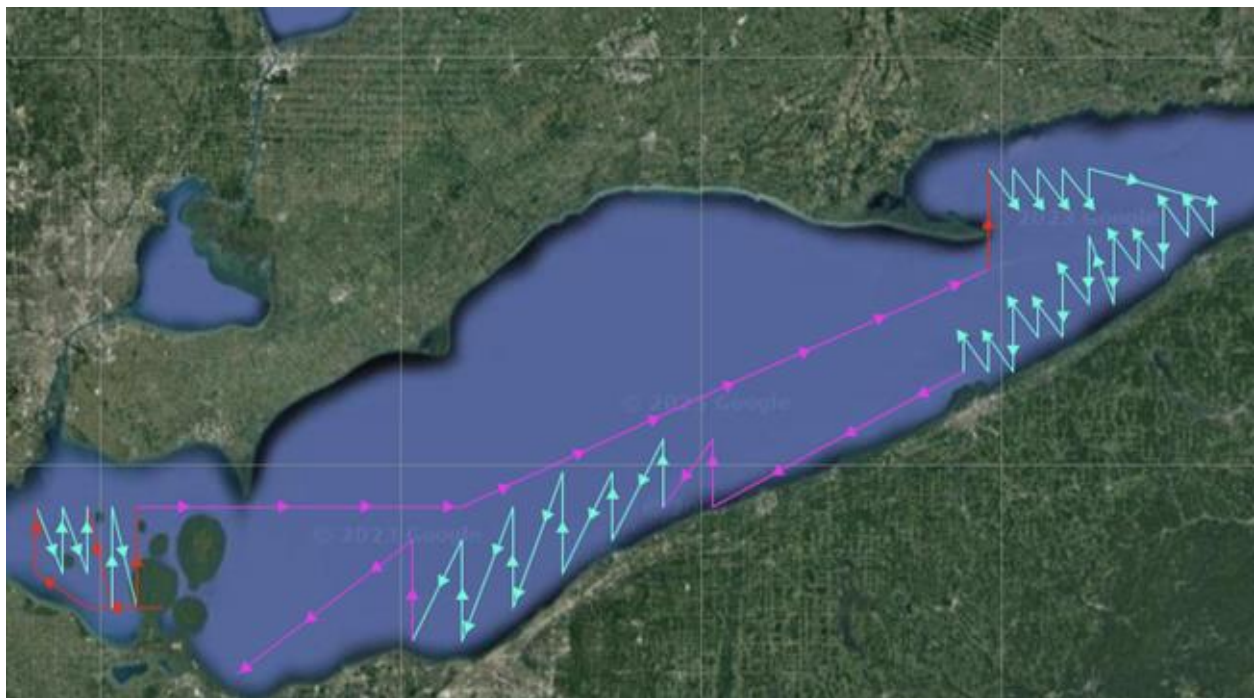
Deployment date (approx): 13 July 23

Deployment location: Erie, PA

USGS mission dates: 1 Aug 23 - 26 Sept 23

Average speed: ~2 kn

Mission description: Mission start in Western basin tracking HABS and fish densities, transit to eastern basin to study large cold water predators; finish mission in south central basin focused on fish densities relative to anoxia. Throughout mission, Saildrone and conventional research vessels (from USGS, OHDNR, and OMNRF) will meet to gather comparative data on fish densities in the same water on the same night. See map below.



*Lake Michigan/Huron mission*

AIS identifier: "SD-1084"

MMSI: 338431592

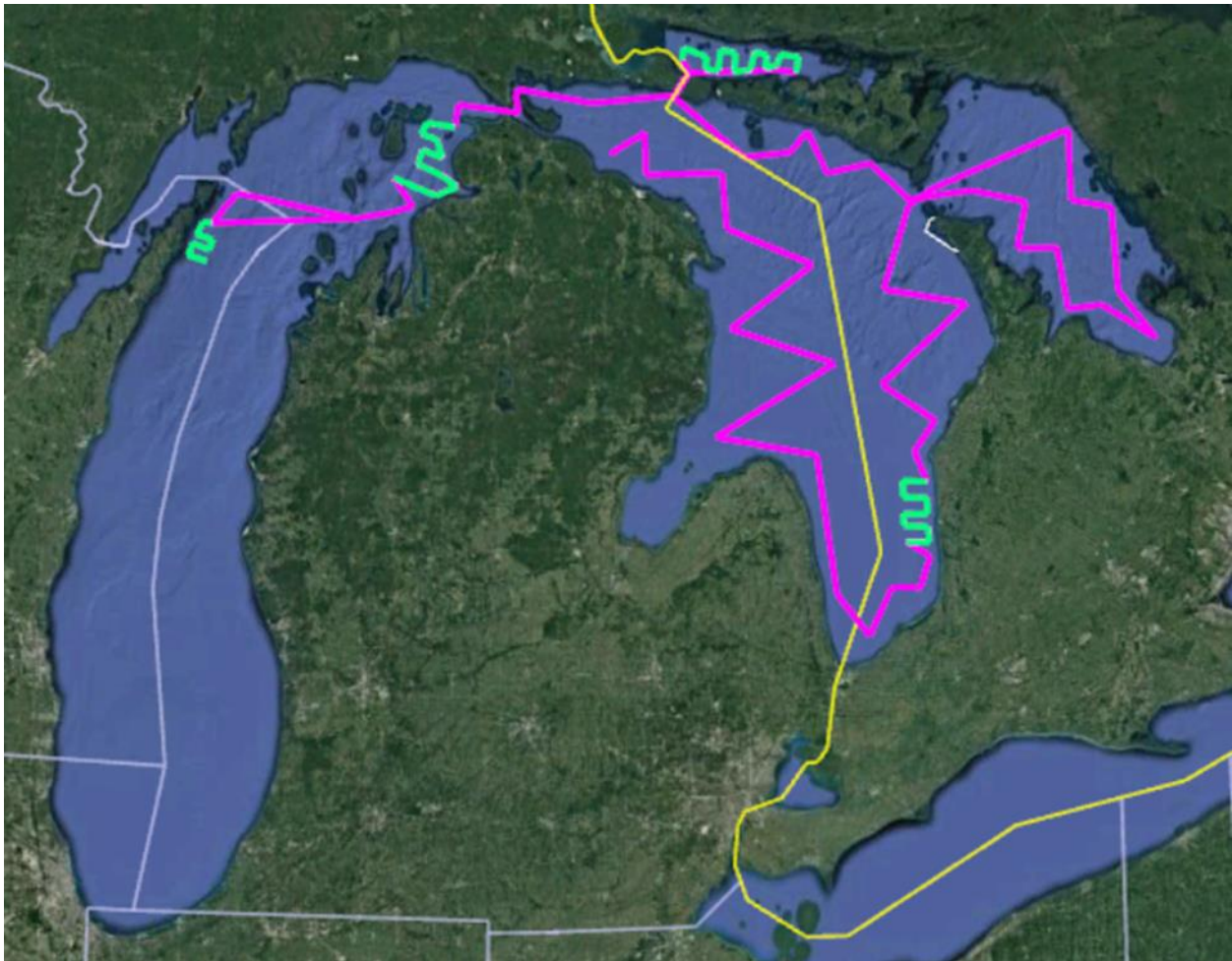
Deployment date (approx): 19 July 23

Deployment location: Charlevoix, MI

USGS mission dates: 1 Aug 23 - 26 Sept 23

Average speed: ~2 kn

Tentative mission description: [Subject to change due to ongoing staffing issues.] Deploy from Charlevoix and conduct coordinated sampling with partner vessels near the Door Peninsula and east of Beaver Island. Tow through the Straights around 10 August and complete lake-wide survey of Lake Huron including Canadian waters (North Channel, Georgian Bay, and main basin). SD-1080 will be towed in and out of the North Channel. Conduct coordinated sampling with vessels from USFWS, USGS, and MDNR opportunistically)



Waterway Analysis and Management System Survey

Name of Waterway: \_\_\_\_\_

User Information

\_\_\_ Commercial User

\_\_\_ Recreational User

Number of years in the maritime industry or number of years using this waterway: \_\_\_\_\_

Number of transits in the waterway per year: \_\_\_\_\_

Number of night transits of waterway: \_\_\_\_\_

Seasonal Dates: Start: \_\_\_\_\_ End: \_\_\_\_\_

Name of Vessel: \_\_\_\_\_

Vessel Description: \_\_\_\_\_

Length: \_\_\_\_\_ Beam: \_\_\_\_\_ Draft: \_\_\_\_\_ Gross Tons: \_\_\_\_\_

Net Tons: \_\_\_\_\_ Bridge Height of Eye: \_\_\_\_\_

Cargo Carried: \_\_\_\_\_

Navigational tools used: (ECDIS/ECPINS, GPS, DGPS, VISUAL, RADAR) \_\_\_\_\_

\_\_\_\_\_

\_\_\_\_\_

\_\_\_\_\_

What area do you believe is the most dangerous or difficult to navigate: \_\_\_\_\_

\_\_\_\_\_

\_\_\_\_\_

\_\_\_\_\_

Are the floating aids to navigation (lighted and unlighted buoys) adequate for this waterway:

\_\_\_\_\_

---

---

---

Are the fixed aids to navigation (lights, ranges, lighthouses, daybeacons) adequate for this waterway: \_\_\_\_\_

---

---

---

Are the year round and lighted ice buoys adequate: \_\_\_\_\_

---

---

---

Are there buoys that you feel should be changed to fixed aids to navigation?

---

---

---

---

Are there any buoys that could be eliminated from this waterway: \_\_\_\_\_

---

---

---

Are there any buoys with sound signals that the bell or gong could be removed:

---

---

---

Are there any areas that require additional aids to navigation in this waterway:

---

---

---

Do the nautical charts, Coast Pilot, and Light List meet your needs for this waterway: \_\_\_\_\_

---

---

---

Are there private Aids to Navigation that you find misleading or interfere with the current system in the waterway:

---

---

---

Any addition comments on this waterway: \_\_\_\_\_

---

---

---

---

Thank you for taking time to comment on this waterway. Your input as a mariner very valuable to the U. S. Coast Guard in evaluating waterways to make them safe and as easily navigable as possible. Please feel free to contact [D09-DG-District-D9-ATON-Support@uscg.mil](mailto:D09-DG-District-D9-ATON-Support@uscg.mil) with any other questions or concerns about any aids to navigation in the Great Lakes. The survey can be mailed to:

Commander (dpw-2)  
Ninth Coast Guard District  
1240 East Ninth Street  
Cleveland, Ohio 44199

---