



U.S. Department
of Homeland Security
**United States
Coast Guard**

LOCAL NOTICE TO MARINERS

District: 9

Week: 33/24

Issued by: Commander (dpw)
Ninth Coast Guard District
1240 East Ninth Street,
Cleveland, OH 44199-2060
Telephone: (571) 608-1683

Direct questions about this LNM to the above address.

All distances in this publication are STATUTE MILES unless otherwise noted.*

District Nine Internet Address <https://www.atlanticarea.uscg.mil/Our-Organization/District-9/>

District Nine Local Notice to Mariners email Address D09-DG-District-D9-LocalNoticetoMariners@uscg.mil

** Navigation Information Service watchstander, 24 hours a day at (703) 313-5900 ** **Internet Address** <https://www.navcen.uscg.gov/>

Light List Reference: Commandant Publication P16502.7, VOL VII, 2023 Edition

Coast Pilot Reference: 2024 U.S. Coast Pilot 6 Great Lakes 54th Edition

Coast Pilots, along with corrections are available at: <https://nauticalcharts.noaa.gov/publications/coast-pilot/index.html>

The Local Notice to Mariners is available on the Internet at <https://www.navcen.uscg.gov/local-notices-to-mariners-by-cg-district> You will also have links to other government agencies- web pages including the US Army Corps of Engineers and the National Ocean Service.

REPORT DISCREPANCIES IN AIDS TO NAVIGATION TO THE NEAREST COAST GUARD UNIT

The Ninth District and all Sector offices for their areas of responsibility issue a BROADCAST NOTICE TO MARINERS.

The following Broadcast Notice to Mariners have been incorporated into this week's Local Notice to Mariners:9

Sector Eastern Great Lakes - EGL154-24 through EGL160-24

Ninth District - C100-24 through C104-24

Sector Detroit, MI - D100-24 through D104-24

Sector Lake Michigan, WI - M290-24 through M294-24

Sector Northern Great Lakes- NGL078-24 through NGL081-24

The United States Coast Guard Navigation Information Service (NIS), operated by the USCG Navigation Center, is staffed 24 hours a day, 7 days a week. The NIS provides information on the current operational status, effective policies, and general information for GPS and DGPS. The

NIS also disseminates Safety Broadcasts (BNM), Local Notice to Mariners (LNM), and the latest Notice Advisory to Navstar Users (NANU). NANU notices can be obtained via email subscription through the USCG Navigation Center website: <https://cgls.uscg.mil/mailman/listinfo/nanu>. In addition,

the NIS investigates all reports of degradation or loss of GPS, DGPS or AIS service. Users are encouraged to report all degradation or loss of radio navigation services to the NIS via any of the following: Phone: (703) 313-5900, mail to: webmaster@smtp.navcen.uscg.mil, or on the internet at: <https://www.navcen.uscg.gov>

ABBREVIATIONS

A through H

ADRIFT - Buoy Adrift
AICW - Atlantic Intracoastal Waterway
AI - Alternating
B - Buoy
BKW - Breakwater
bl - Blast
BNM - Broadcast Notice to Mariner
bu - Blue
C - Canadian
CHAN - Channel
CGD - Coast Guard District
C/O - Cut Off
CONT - Contour
CRK - Creek
CONST - Construction
DAYMK/Daymk - Daymark
DBN/Dbn - Daybeacon
DBD/DAYBD - Dayboard
DEFAC - Defaced
DEST - Destroyed

I through O

I - Interrupted
ICW - Intracoastal Waterway
IMCH - Improper Characteristic
INL - Inlet
INOP - Not Operating
INT - Intensity
ISL - Islet
Iso - Isophase
kHz - Kilohertz
LAT - Latitude
LB - Lighted Buoy
LBB - Lighted Bell Buoy
LHB - Lighted Horn Buoy
LGB - Lighted Gong Buoy
LONG - Longitude
LNM - Local Notice to Mariners
LT - Light
LT CONT - Light Continuous
LTR - Letter
LWB - Lighted Whistle Buoy

P through Z

PRIV - Private Aid
Q - Quick
R - Red
RACON - Radar Transponder Beacon
Ra ref - Radar reflector
RBN - Radio Beacon
REBUILT - Aid Rebuilt
RECOVERED - Aid Recovered
RED - Red Buoy
REFL - Reflective
RRL - Range Rear Light
RELIGHTED - Aid Relit
RELOC - Relocated
RESET ON STATION - Aid Reset on Station
RFL - Range Front Light
RIV - River
RRASS - Remote Radio Activated Sound Signal
s - seconds
SEC - Section
SHL - Shoaling

DISCON - Discontinued
DMGD/DAMGD - Damaged
ec - eclipse
EST - Established Aid
ev - every
EVAL - Evaluation
EXT - Extinguished
F - Fixed
fl - flash
Fl - Flashing
G - Green
GIWW - Gulf Intracoastal Waterway
HAZ - Hazard to Navigation
HBR - Harbor
HOR - Horizontal Clearance
HT - Height

LWP - Left Watching Properly
MHz - Megahertz
MISS/MSNG - Missing
Mo - Morse Code
MRASS - Marine Radio Activated Sound Signal
MSLD - Misleading
N/C - Not Charted
NGA - National Geospatial-Intelligence Agency
NO/NUM - Number
NOS - National Ocean Service
NW - Notice Writer
OBSCU - Obscured
OBST - Obstruction
OBSTR - Obstruction
Oc - Occulting
ODAS - Anchored Oceanographic Data Buoy

si - silent
SIG - Signal
SND - Sound
SPM - Single Point Mooring Buoy
SS - Sound Signal
STA - Station
STRUCT - Structure
St M - Statute Mile
TEMP - Temporary Aid Change
TMK - Topmark
TRLB - Temporarily Replaced by Lighted Buoy
TRLT - Temporarily Replaced by Light
TRUB - Temporarily Replaced by Unlighted Buoy
USACE - Army Corps of Engineers
W - White
Y - Yellow

Additional Abbreviations Specific to this LNM Edition:

LIB - Lighted Ice Buoy

SECTION I - SPECIAL NOTICES

This section contains information of special concern to the Mariner.

Cancellation of NOAA Paper and Raster Nautical Charts

The National Oceanic and Atmospheric Administration (NOAA) is undertaking a multi-year program to end production and maintenance of its suite of over 1,000 traditional paper nautical charts and all associated raster chart products and services, including: Print-on-Demand (POD) paper nautical charts, Full-size chart PDF files, BookletChart™ PDF files, NOAA raster navigational charts (NOAA RNC®), the NOAA RNC tile service, and the online RNC viewer.

Six months notice of the intent to cancel a specific chart is provided in a "Last Edition" notice. The final cancellation of a chart is made in a "Canceled" notice. Both types of notices will appear in LNM Section IV, "Chart Correction." A comprehensive list of all canceled NOAA charts is available at: <http://www.charts.noaa.gov/MCD/Dole.shtml>.

Traditional paper nautical chart production is ending to enable the creation and maintenance of larger scale, more up-to-date, higher quality coverage of NOAA's electronic navigational chart (NOAA ENC®) product. This will significantly enhance the amount of charted detail available to mariners. More information about NOAA's program to sunset traditional paper charts is on the NOAA Coast Survey website at: <https://nauticalcharts.noaa.gov/charts/farewell-to-traditional-nautical-charts.html>

An online NOAA Custom Chart application at: <https://devgis.charttools.noaa.gov/pod> is available to create chart images from ENC data, which may then be printed. Notices to Mariners will not be issued for NOAA Custom Charts.

LNM: 04/20

SAFETY NOTICE - NAVIGATIONAL RANGE AND SECTOR LIGHTS ON ELECTRONIC CHARTS

The U.S. Coast Guard has become aware that the Range and Sector Light Characteristic labels are not displayed on Electronic Navigational Charts (ENCs) when used in an Electronic Chart Display and Information System (ECDIS) due to limitations of the S-52 ECDIS display specification. Mariners may query the ENC data directly within ECDIS or refer to the Light List for complete information on Range and Sector Light Characteristics.

LNM: 39/22

PUBLICATION OF NVIC 03-23 GUIDANCE ON NAVIGATIONAL SAFETY IN AND AROUND OFFSHORE RENEWABLE ENERGY INSTALLATIONS (OREI)

The Coast Guard has published Navigation and Vessel Inspection Circular (NVIC) 03-23: Guidance on Navigational Safety In and Around Offshore Renewable Energy Installations (OREI) to highlight considerations when planning and undertaking voyages in the vicinity of offshore renewable energy installations (OREI) in U.S. waters. The prudent mariner should review and utilize this NVIC to make an informed risk assessment prior to navigating within or in the vicinity of an OREI. Important Maritime Safety Information (MSI) relating to OREIs is distributed by Local or Broadcast Notices to Mariners (LNM or BNM) promulgated by Coast Guard Districts. Marine Safety Information Bulletins (MSIB) released by the local Captain of the Port (COTP) may be issued to provide supplemental information. Interested parties should contact the Office of Navigation Systems at CGNAV@uscg.mil with any questions or feedback.

LNM: 47/23

MERCHANT MARINER CREDENTIAL

The U.S. Coast Guard announced a new merchant mariner credential (MMC) set to launch on March 1, 2024. This milestone marks the first comprehensive revision of the mariner credential in nearly a decade and is strategically designed to enhance both quality of service and security within the Marine Transportation System (MTS). U.S. Coast Guard Marine Safety Information Bulletin (MSIB) 01-24, New Merchant Mariner Credential Passport Booklet Replacement, has been posted on the DCO's MSIB Site and announced at the National Maritime Center (CG-NMC)

Home Page (uscg.mil). Please visit these resources for more information on the credential.

LNM: 09/24

2024 Light List

2024 Light Lists are available on the USCG Navigation Center's website at:
<https://www.navcen.uscg.gov/light-list-annual-publication>

Coast Guard Light Lists are a means for communicating aids to navigation information to the maritime public. The last government printed Light Lists were the 2024 editions.

While the Light Lists will no longer be available in government printed form, commercial reproductions may be available for purchase from maritime service providers.

Local Notice to Mariners will continue to advise Light List corrections and NAVCEN will continue to publish a compilation of corrections.

Complete versions of the 2024 Light Lists are updated weekly on the NAVCEN website and mariners should download applicable copies and updates as needed at: <https://www.navcen.uscg.gov/weekly-light-lists>

A summary of 2024 Light List corrections are available at: <https://www.navcen.uscg.gov/light-list-summary-of-corrections>

Guidance for use of electronic navigation publications onboard U.S. vessels can be found at:
http://www.uscg.mil/hq/cgcv/cvc/policy/policy_letters/543/CG-543_pol10-05.pdf

If the links above do not work, you should either copy and paste the links into your web browser or follow the LNM links from the Navigation Center LNM page at <https://www.navcen.uscg.gov/local-notice-to-mariners-by-cg-district>.

The Local Notice to Mariners, Light List, and Summary of Corrections are in Portable Document Format (PDF) and viewing them requires a PDF reader. PDF readers are readily available on the internet, generally free of charge.

If you have questions regarding this message, please contact the Navigation Center at <https://www.navcen.uscg.gov/report-a-problem> (use "LNMs, Charts, Chart Corrections, or Light Lists" as the subject from the pull down menu).

LNM: 03/24

U.S. Coast Pilot 6-NEW EDITION

PUBLICATION–National Oceanic Administration (NOAA)– U.S. Coast Pilot 6, Great Lakes and their connecting waterways, 54th Edition, 2024, has been issued and is ready for free download and weekly updates at <https://nauticalcharts.noaa.gov/publications/coast-pilot/index.html>.

Only Print-on-Demand (POD) bound copies are available for purchase; visit nauticalcharts.noaa.gov/publications/print-agents.html#coast-pilot. The 2024 Edition cancels the preceding 2023 Edition, and incorporates all previous corrections.

LNM: 16/24

USACE NOTICE TO NAVIGATION INTERESTS

Current Federal Channel conditions, shoaling, and the most recent channel surveys are available at the following Army Corps of Engineers web sites:

Buffalo: <http://www.lrb.usace.army.mil/>
Detroit: <http://www.lre.usace.army.mil/>
Chicago: <http://www.lrc.usace.army.mil/>
Rock Island: <http://www.mvr.usace.army.mil/>
St. Paul: <https://www.mvp.usace.army.mil/>

LNM: 28/12

GREAT LAKES - Great Lakes Water Levels

See Enclosure 1

The current and four week expected water level table for the Great Lakes, Connecting Channels and the St. Lawrence River, will be published in Enclosure 1 following SECTION VIII - LIGHT LIST CORRECTIONS of the Local Notice to Mariner or by visiting the link below:

<https://www.lre.usace.army.mil/Missions/Great-Lakes-Information/Great-Lakes-Water-Levels/Water-Level-Forecast/Connecting-Channels-Forecast/>

LNM: 32/20

LAKE ERIE – Fairport Harbor – Chart 14829

The Coast Guard has established a virtual AIS aid to navigation at the entrance of Fairport Harbor to assist in identifying recent shoaling within the channel. The aid (MMSI: 993682815) is labeled W SHOAL 2 and identifies the encroachment of shoaling on the western side of the channel less than 18.5ft water depth. The aid is for reference only and is positioned based on most recent survey data, and does not account for periodic variations in the position of the shoal. Mariners are urged to use caution while transiting the area.

LNM: 21/23

LAKE ST. CLAIR - St. Clair Cut-off LB "CO" LLNR 8590

The Coast Guard will be temporarily deploying a buoy of reduced size at St. Clair Cut-Off Preferred Channel Lighted Buoy "CO" (LLNR 8590) in Lake St. Clair, MI. The visual and operational radar range of the buoy will be reduced. The lighted signal range will remain unchanged. The temporary change is in response to delays in the permanent buoy's off-season refurbishment. Upon completion, the permanent buoy will be redeployed back on station. All mariners are requested to use caution while transiting the area.

LNM: 15/24

LAKE HURON - Harrisville to Forty Mile Point

The Office of the Under Secretary of Defense for Research and Experimentation via Naval Surface Warfare Center, Crane Division will conduct Experimentation Event Silent Storm '24 from 15-26 July 2024. The event will encompass an area that includes Thunder Bay, Thunder Bay Island, Middle Island, and Rockport, MI. The area is bounded northerly by 45-13-00.000N, southerly by 44-59-00.000N, and easterly by 083-09-00.000W. During this event mariners can expect many small Unmanned Surface, Sub-surface, and Air Vehicles in operation. All unmanned platforms will have manned vessels in the vicinity for control and safety. Questions can be directed to Rob Gamberg, phone: 812-381-4957, email: robert.d.gamberg.civ@us.navy.mil.

LNM: 29/24

ST. MARYS RIVER - American Canal - Chart 14884

Northeast Pierhead Light (LLNR 14205) The U. S. Army Corps of Engineers will be relocating this light to the top of their new camera tower. As soon as the position and height of the light's new location is confirmed it will be advertised in Section VIII - Light List Corrections of the LNM.

LNM: 10/21

LAKE MICHIGAN - Seul Choix Point

The Coast Guard has received a report of soundings less than charted depth 3.5NM east/southeast of Seul Choix Point at position 45°53'18"N, 085°50'27"W. The area of reduced depth was reported on the east/west Manistique to Lansing Shoal recommended shipping route. Mariners are urged to use caution while transiting the area.

LNM: 06/24

LAKE MICHIGAN - Algoma

Algoma Light 1 (LLNR 20980) will be temporarily disestablished for marine construction operations on the south breakwater in Algoma, WI. A temporary flashing white light will be installed each night on the end of the breakwater to assist mariners in identifying the construction area. The permanent aid's anticipated reinstatement date is July 15th, 2024. Mariners are urged to use caution while transiting the area.

LNM: 26/24

LAKE SUPERIOR - Isle Royale

The Coast Guard has received a report of a partially submerged spar buoy at position 48°05'49"N, 088°44'12"W, on the north shore of Isle Royale just west of Hawk Island. Mariners are urged to use caution while transiting this area.

LNM: 25-24

LAKE SUPERIOR – Keweenaw – Chart 14972

Keweenaw Upper Entrance West Breakwater Light (LLNR 15115) was reported damaged and swept from its location on the breakwall. The approximately 20' metal tower is submerged in vicinity of the breakwater at an unknown position. All mariners are urged to use caution when transiting the area.

LNM: 12/23

SECTION II - DISCREPANCIES

This section lists all reported and corrected discrepancies related to Aids to Navigation in this edition. A discrepancy is a change in the status of an aid to navigation that differs from what is published or charted.

DISCREPANCIES (FEDERAL AIDS)

LLNR	Aid Name	Status	Chart No.	BNM Ref.	LNM St	LNM End
2035	Port Ontario Buoy 4	OFF STA		EGL158-24	33/24	
2040	Port Ontario Buoy 6	OFF STA		EGL159-24	33/24	
2680	Buffalo Harbor Light	SS INOP	14820	EGL143-24	32/24	
10035	Lake Huron Cut Lighted Buoy 1	OFF STA		D041-24	23/24	

10860	Saginaw River Lighted Buoy 31	LT EXT	D104-24	33/24
13030	Munuscong Channel (Upbound) Junction Light ML	AIS INOP		21/24
13070	Munuscong Channel (Upbound) Lighted Buoy 9	AIS INOP		05/24
13125	Sailors Encampment Channel Lighted Buoy 21	AIS INOP		05/24
13280	Middle Neebish South Range Rear Light	DAYMK MISSING	NGL068-24	28/24
13475	West Neebish Channel (Downbound) Upper Range Rear Light	DAYMK MISSING		36/23
13645	Sawmill Point Lighted Buoy 22	AIS INOP		05/24
13695	Moon Island Lighted Buoy 13	AIS INOP		05/24
13955	Upper Nicolet Range Front Light	DAYMK MISSING		21/24
13960	Upper Nicolet Range Rear Light	DAYMK MISSING	NGL004-24	26/23
14050	Six Mile Point Range Rear Light	DAYMK MISSING	S079-23	10/21
14880	Keweenaw Waterway Light 25	STRUCT DEST/TRLB	NGL047-24	19/24
15115	Keweenaw Upper Entrance West Breakwater Light	STRUCT DEST	S015-23	02/23
15175	Copper Harbor Light	LT IMCH	NGL081-24	33/24
15545	Red Cliff Point Lighted Buoy 4	LT EXT	NGL064-24	27/24
15840	Duluth Harbor Breakwater Isolated Danger Buoy	MISSING		29/24
17210	Canoe Channel Daybeacon 8	STRUCT DEST/TRUB		23/22
18415	Portage Lake North Pierhead Light	LT IMCH		32/24
22185	Green Bay Harbor Entrance Channel Range Rear Light	DAYMK MISSING	M157-23	44/20

DISCREPANCIES (FEDERAL AIDS) CORRECTED

LLNR	Aid Name	Status	Chart No.	BNM Ref.	LNM St	LNM End
1400	Point Vivian Leading Light	WATCHING PROPERLY			32/24	33/24
8220	Livingstone Memorial Lighted Buoy 111	RELIGHTED			33/24	33/24
9578	St. Clair Flats Lighted Danger Buoy C	RESET ON STATION			33/24	33/24

DISCREPANCIES (PRIVATE AIDS)

LLNR	Aid Name	Status	Chart No.	BNM Ref.	LNM St	LNM End
4256	Cashelmarra Jetty Light	LT IMCH			24/24	
4960	Sandusky Yacht Club Light 1	LT EXT		D026-24	18/24	
4965	Sandusky Yacht Club Light 2	LT EXT		D027-24	18/24	
6025	Toledo Water Works Intake Crib Lights	LT EXT		D034-24	20/24	
8892	ACOE LKSTC Water Sensor Buoy 1	MISSING		D059-24	26/24	
19860	Filtration Plant Breakwater South End Light	LT EXT			23/24	
19865	Filtration Plant Breakwater North End Light	LT EXT			23/24	
19931	Thirty-First Street Jetty Danger Lighted Buoy A	MISSING			23/24	
19932	Thirty-First Street Jetty Danger Lighted Buoy B	MISSING			23/24	
19933	Thirty-First Street Jetty Danger Lighted Buoy C	MISSING			23/24	
19934	Thirty-First Street Inner Jetty Light	LT EXT			23/24	
20470	Racine Launch Basin Entrance Light	LT EXT			22/24	
20490	Racine East Harbor Entrance Light 2	LT EXT			28/24	
20545	Racine Harbor Light 13	LT EXT			22/24	
20681	Lakeshore State Park Entrance Lt 1	LT EXT		M116-24	21/24	
20700	Milwaukee City South Pier No. 2 South Light	LT EXT		M165-24	24/24	

20729	South Shore Park Entrance Lighted Buoy 1	MISSING		21/24
20730	South Shore Park Entrance Lighted Buoy 2	MISSING		21/24
21405	Shipyard Island Marina North Dock Light	LT IMCH	M199-24	27/24

DISCREPANCIES (PRIVATE AIDS) CORRECTED

LLNR	Aid Name	Status	Chart No.	BNM Ref.	LNM St	LNM End
------	----------	--------	-----------	----------	--------	---------

None

PLATFORM DISCREPANCIES

Name	Status	Position	BNM Ref.	LNM St	LNM End
------	--------	----------	----------	--------	---------

None

PLATFORM DISCREPANCIES CORRECTED

Name	Status	Position	BNM Ref.	LNM St	LNM End
------	--------	----------	----------	--------	---------

None

SECTION III - TEMPORARY CHANGES and TEMPORARY CHANGES CORRECTED

This section contains temporary changes and corrections to Aids to Navigation for this edition. When charted aids are temporarily relocated for dredging, testing, evaluation, or marking an obstruction, a temporary correction shall be listed in Section IV giving the new position.

TEMPORARY CHANGES

LLNR	Aid Name	Status	Chart No.	BNM Ref.	LNM St	LNM End
2105	Oswego Harbor West Channel Light 2	TRLB	14786		17/19	
2855	Black Rock Canal Light 15	DISCONTINUED			12/24	
8240	William Livingstone Memorial Light	Reduced Intensity			33/21	
9690	Grande Pointe Light 23	TRLT			47/20	
13710	West Neebish Channel (Downbound) Lighted Buoy 10	DISCONTINUED FOR DREDGING			32/24	
14540	Little Lake Harbor Light 2	DISCONTINUED FOR DREDGING			47/22	
15220	Ontonagon Harbor East Breakwater Light	DISCONTINUED			02/22	
16963	Driftwood Point Light	DISCONTINUED			45/20	
20980	Algoma Light 1	DISCONTINUED			25/24	

TEMPORARY CHANGES CORRECTED

LLNR	Aid Name	Status	Chart No.	BNM Ref.	LNM St	LNM End
------	----------	--------	-----------	----------	--------	---------

None

PLATFORM TEMPORARY CHANGES

Name	Status	Position	BNM Ref.	LNM St	LNM End
------	--------	----------	----------	--------	---------

None

PLATFORM TEMPORARY CHANGES CORRECTED

Name	Status	Position	BNM Ref.	LNM St	LNM End
------	--------	----------	----------	--------	---------

None

LAST EDITION No new editions of chart 14902 will be published. It will be canceled on 30-Oct-24. Comparable or larger scale Electronic Navigational Chart (ENC) coverage is available. See "Cancellation of NOAA Paper and Raster Nautical Charts" in Section I of this LNM for details. A list of all canceled NOAA charts is at <https://www.charts.noaa.gov/MCD/Dole.shtml>.

14961 13th Ed. 01-FEB-16 Last LNM: 36/19 NAD 83 33/24
ChartTitle: Lake Superior (Mercator Projection)

Main Panel 1499 LAKE SUPERIOR. Page/Side: A

LAST EDITION No new editions of chart 14961 will be published. It will be canceled on 30-Oct-24. Comparable or larger scale Electronic Navigational Chart (ENC) coverage is available. See "Cancellation of NOAA Paper and Raster Nautical Charts" in Section I of this LNM for details. A list of all canceled NOAA charts is at <https://www.charts.noaa.gov/MCD/Dole.shtml>.

SECTION V - ADVANCE NOTICES

This section contains advance notice of approved projects, changes to aids to navigation, or upcoming temporary changes such as dredging, etc. Mariners are advised to use caution while transiting these areas.

SUMMARY OF ADVANCED APPROVED PROJECTS

Approved Project(s) **Project Date** **Ref. LNM**
None

Advance Notice(s)

LAKE ERIE - Black Rock Canal - Buffalo NY

The Coast Guard is permanently disestablishing Black Rock Canal Light 15 (LLNR 2855) in Buffalo, NY. The light is currently not operational.
LNM: 11/24

LAKE ERIE - Willis Crib - Erie PA

The Coast Guard is permanently disestablishing Willis Crib Isolated Danger Buoy "DW" (LLNR 3492) in Erie, PA. The operation of Willis Crib Dock Light (LLNR 3490) will not change.
LNM: 11/24

LAKE ERIE - Detroit - CHART 14854

The Coast Guard will be changing the operation of the sound signal on Detroit River Light (LLNR 6885) from operating continuously, to Mariner Radio Activated Sound Signal (MRASS) year-round. The sound signal would be activated by keying the microphone five or more times on VHF FM channel 83A / 157.175MHz.
LNM: 50/23

LAKE ERIE - Sandusky Channel

The Coast Guard will be changing the operation of Sandusky Straight Channel Buoy 15 (LLNR 4665) from a permanent unlighted buoy to a seasonally lighted buoy. The buoy will be lighted from Apr 14th to Dec 7th annually, and will display a Fl G 2.5s characteristic.
LNM: 19/24

SECTION VI - PROPOSED CHANGES

Periodically, the Coast Guard evaluates its system of aids to navigation to determine whether the conditions for which the aids to navigation were established have changed. When changes occur, the feasibility of improving, relocating, replacing, or discontinuing aids are considered. This section contains notice(s) of non-approved, proposed projects open for comment. SPECIAL NOTE: Mariners are requested to respond in writing to the District office unless otherwise noted (see banner page for address).

PROPOSED WATERWAY PROJECTS OPEN FOR PUBLIC COMMENT

Proposed Project(s) **Closing** **Docket No.** **Ref. LNM**
None

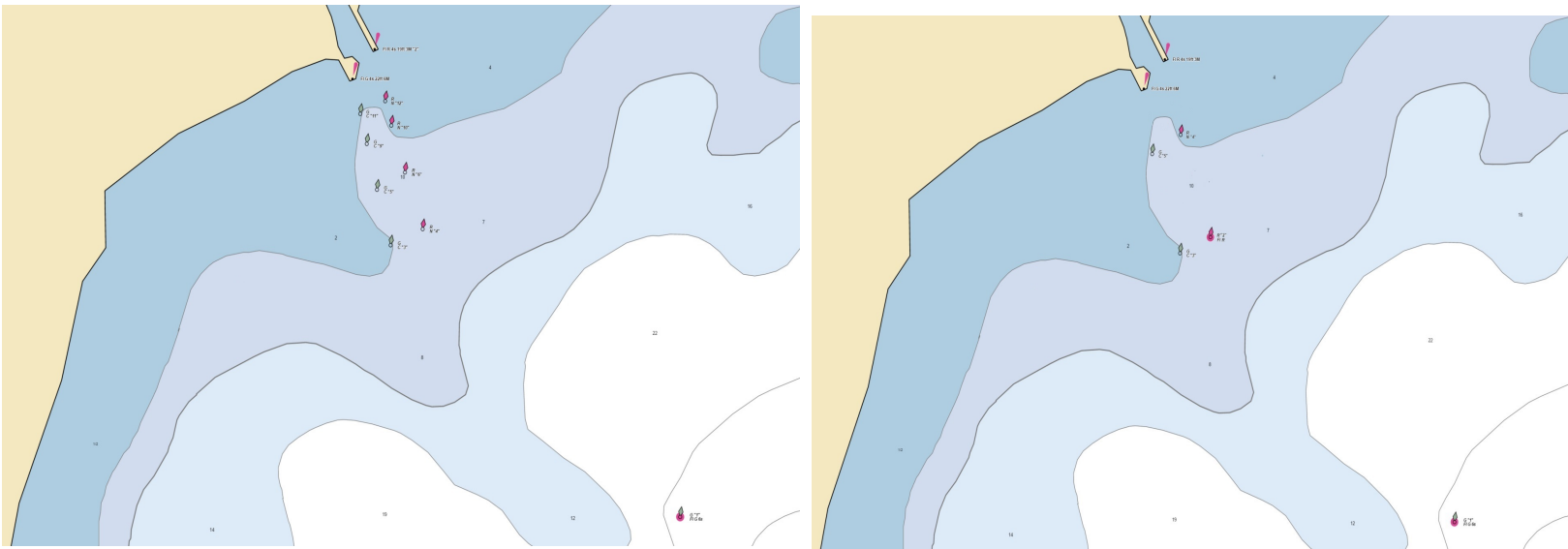
Proposed Change Notice(s)

LAKE MICHIGAN - Green Bay - Cedar River

The Coast Guard is evaluating the redesign of the entrance channel at the Cedar River in Western Green Bay, WI. The number of aids to navigation in the channel will be reduced from eleven to seven. The remaining aids will be renamed in order to better identify progression through the channel. The following list of changes is being proposed:
- Cedar River Entrance Lighted Buoy 1 will remain unchanged.
- Cedar River Buoy 4 will be renamed Cedar River Lighted Buoy 2, and the previously unlighted buoy will be lit with a flashing red light.
- Cedar River Buoy 3 will remain unchanged.
- Cedar River Buoy 5 will be permanently disestablished.
- Cedar River Buoy 6 will be permanently disestablished.

- Cedar River Buoy 9 will be renamed Cedar River Buoy 5.
- Cedar River Buoy 10 will be renamed Cedar River Buoy 4.
- Cedar River Buoy 11 will be permanently disestablished.
- Cedar River Buoy 12 will be permanently disestablished.
- Cedar River Light 2 will be renamed Cedar River East Pierhead Light. The operation of the light and daymarks will remain unchanged.
- Cedar River Pierhead Light will be renamed Cedar River West Pierhead Light. The operation of the light and daymarks will remain unchanged.

Anticipated changes would take place in spring of 2025 during the seasonal establishment of the waterway.



LNM: 31/24

For any comments or questions on these proposed changes please contact:

The Ninth District Aids to Navigation manager at Brian.D.Hawkins2@uscg.mil or call (206) 815-0913.

LNM: 30/13

SECTION VII - GENERAL

This section contains information of general concern to the Mariners. Mariners are advised to use caution while transiting these areas.

Waterways Analysis and Management System

The Ninth Coast Guard District will be reviewing the following waterways throughout the Great Lakes Region. The study focuses primarily on aids to navigation in the waterway. Public comments are an important tool in this process so that we can provide the adequate markings and the right mix of signals to a waterway for safe navigation. Comments on the below listed waterways can be sent to Brian.D.Hawkins2@uscg.mil or by calling (206) 815-0913. You may also complete the survey attached to the Local Notice to Mariner and either email it or mail it to: Commander (dpw), Ninth Coast Guard District, 1240 East Ninth St., Cleveland, Ohio 44199.

The following waterways will be evaluated for the duration of calendar year 2024 and will be accepting comment until 31Dec2024:

- Sackets Harbor
(LLNR 1755-2024.9)
- Buffalo Harbor/Black Rock Canal
(LLNR 2665-3360)
- Dunkirk Harbor
(LLNR 3365-3492)
- Erie Harbor
(LLNR 3495-3696)
- Conneaut Harbor
(LLNR 3700-3735)
- Ashtabula Harbor
(LLNR 3740-3830)
- Fairport Harbor
(LLNR 3835-3955)

LNM: 11/24

GREAT LAKES - Marine Events

Marine events such as races, parades, regattas, and fireworks displays are frequently held in the Great Lakes region. Advance information on specific events is contained in enclosure (2) of this publication. The public is reminded to listen to the local broadcast notice to mariners for the most up-to-date information on a marine event. Mariners are advised that some events may require temporary aids to navigation that are not displayed

GREAT LAKES - Marine Events

on a chart or in the Light List, and that they should exercise additional caution while operating in the vicinity of a scheduled marine event.

LNM: 24/13

LAKE ONTARIO – Little Sodus Bay – Chart 14800

There is an uncharted breakwall along the shore extending from the west side of Little Sodus Bay entrance to the boat ramp of West Barrier Bar County Park. The breakwall is unmarked and unlit. Visibility of the breakwall may be impacted due to high water. All mariners are requested to transit the area with caution.

LNM: 19/23

LAKE ONTARIO - Crescent Beach Breakwater

A series of breakwater barriers are being constructed in Lake Ontario near Crescent Beach, to the east of Sodus Point, NY. Work will be conducted from 01 April 2024, to 30 November 2024 between the hours of 0500 to 2000. Hours are dependent on weather conditions. Construction vessels can be hailed on VHF Channel 16. Inquiries related to the project can be directed to Mr. Glenn Roet at (315) 575-6091. All mariners are advised to stay clear of workboats, barges, floating or submerged equipment in the operational work area between floating navigation buoys detailed below and the shoreline.

- 1 N43°16'21.77817" W76°57'52.20335"
- 2 N43°16'20.93870" W76°57'46.38712"
- 3 N43°16'20.17974" W76°57'41.15137"
- 4 N43°16'19.26083" W76°57'36.11887"
- 5 N43°16'17.99008" W76°57'30.33037"
- 6 N43°16'16.95743" W76°57'25.59050"
- 11 N43°16'26.91154" W76°56'44.64137"
- 12 N43°16'29.34557" W76°56'39.60362"
- 13 N43°16'31.87966" W76°56'34.99165"
- 14 N43°16'33.90231" W76°56'31.32131"

LNM: 14/24

LAKE ERIE – Erie Harbor

From 1 June 2024 to 15 July 2024 Ryba Marine Construction Co will be conducting dredging in Erie Harbor. Hours of operation are 24 hours a day 7 days a week. Tug Kristin Joelle can be contacted on VHF channels 13 and 16. All mariners are requested to transit the area with caution.

LNM: 20/24

LAKE ERIE – OH - Ashtabula Harbor – Chart 14836

A submerged breakwater was constructed in Ashtabula harbor. It is connected to the existing East Breakwater. The submerged breakwater is connected to the East Breakwater at the first angle point of the East Breakwater, as entering the harbor, from the lake. All elevations referenced are referred to Low Water Datum (LWD), IGLD 1985.

The center line of the submerged breakwater approximately follows the same azimuth as the first segment of the East Breakwater, in a south easterly direction, for approximately 1000', then slightly bends to the east for another two segments, for approximately 500'.

The first 1000' (Area "A") has a crest design height of -2.0' with a crest width of 9', and a footprint of approximately 150', with the next 100' transitioning to the dimensions in the next item.

The final 400 (Area "B") has a crest height of -5.0', with a crest width of 9', and a footprint of approximately 50'.

The coordinates, in decimal degrees, are as follows:

- 1. 41.918447801N 80.790362308W
- 2. 41.916367139N 80.788014301W
- 3. 41.916189406N 80.787730327W
- 4. 41.916026216N 80.787424318W
- 5. 41.915640784N 80.786454826W
- 6. 41.916242815N 80.783904852W

All mariners are requested to transit the area with caution.

LNM: 17/23

LAKE ERIE – Cleveland Harbor – Chart 14839

Submerged obstructions were reported and confirmed in location 41° 29.380' N, 081° 41.906' W (NAD83) on the Cuyahoga river's left descending bank just east of the Columbus Road Bridge. The USACE completed a hydrological survey on 07 December 2023, which identified four obstructions on the river's bottom believed to be sections of steel corrugated bulkhead originating from a nearby retaining wall. The failed sections settled at the bottom of the river approximately 20 feet into the navigational channel and were measured to be between 18-21 feet from the water's surface. Marines may contact the Sector Eastern Great Lakes Command Center with any questions by phone at 716-843-9596. The most current USACE Hydrographic Survey data can be found on their website here: Buffalo District Maps and Charts (army.mil). All mariners are requested to transit the area with extreme caution.

LNM: 51/23

LAKE ERIE- Rocky River

Shoaling has been reported at the mouth of the Rocky River and throughout its entirety, exceeding 5 feet above low water datum inside the main channel. Of major note, the turning basin located at the mouth of the river on the west bank measures in areas at less than one foot. The latest U.S. Army Corps of Engineers hydrological survey can be found online via links above. All mariners are requested to transit the area with caution.

LNM: 08/24

LAKE ERIE - Avon Lake

There will be a safety zone on all navigable Waters of Lake Erie within a 750-yard radius of the Avon Lake Power Plant, Avon Lake, OH located at position 41-30.250 N 082-3.233 W due to structure deconstruction. The safety zone will be in effect on July 31 from 4:30 a.m. to 8:30 a.m. (local). All Mariners are advised not to enter the safety zone without the approval of the Coast Guard via VHF channel 16.

LNM: 29/24

LAKE ERIE - Lorain Harbor

From 10 Aug 2024 to 15 Oct 2024 Dean Marine and Excavating will be conducting dredging operations in Lorain. Hours of operation are 24 hours a day 7 days a week. Anne Marie and West Wind can be contacted on VHF channels 13, 16 and 79. All mariners are requested to transit the area with caution.

LNM: 30/24

LAKE ERIE - Vermilion River

From 12 Aug 2024 to 3 Nov 2024 Michels Construction will be performing Diving Inspection and Sheet Pile wall construction in the Vermilion River between Erie Lagoon and Vermilion Municipal docks, along the shores of Wakefield MetroPark. Operations will be 10 hours a day, 6 days a week. All mariners are requested to transit the area with caution.

LNM: 32/24

LAKE ERIE - Maumee River

From 08 Jan 2024 to 31 Oct 2025 Mark Haynes Construction will be conducting island restoration of the Clark and Delaware/Horseshoe islands on the Maumee River near river mile 9. Hours of operation are from 0700 to 1700 Monday to Thursday. Two temporary causeways are constructed between the shore and islands that block the side channel at the following locations.

1. Immediately downstream of the Maumee River Yacht Club.
2. Walbridge Park Boat launch.

Boaters entering the river should follow alternate routes marked by temporary buoys. For more information, please visit:
<https://www.toledoport.org/projects/clark-and-delawarehorseshoe-islands-restoration-projects/>

LNM: 08/24

LAKE ERIE - Monroe

From 01 July 2024 to 01 Oct 2024 Dean Marine and Excavating will be dredging in Monroe MI. Hours of operation are 24 hours a day 7 days a week. Tug West Wind and Dredge Louise can be contacted on VHF channels 16 and 79. All mariners are requested to transit the area with caution.

LNM: 26/24

DETROIT RIVER - Belle Isle Intake

From 15 Apr 2024 to 15 Oct 2024 Dean Marine and Excavating will be conducting shoreline rehabilitation near the intake point Belle Isle. Hours of operation are from 0600 to 1900 7 days a week. Vessels can be contacted on VHF channels 16 and 79. All mariners are requested to transit the area with caution.

LNM: 14/24

DETROIT RIVER - Rouge River

From 24 Apr 2024 to 15 Sep 2024 Great Lakes Dock and Materials will be conducting mechanical dredging and capping in the Lower Rouge River. Hours of operation 12 Hours a day Monday thru Saturday. Barge Jacqueln, Tug Duluth and Tug Tracy Lynn can be contacted on VHF channels 16 and 18. All mariners are requested to transit the area with caution.

LNM: 17/24

LAKE ST. CLAIR

From 22 July 2024 to 31 July 2024 the AEM Group will be conducting sediment sampling in the upper St. Clair river and Lake Huron located upstream from Underwater railroad track crossing in Port Huron to five miles in the Federal Navigation Channel in Lake Huron. Hours of operation are from 0600 to 2000 7 days a week. All mariners are requested to transit the area with caution

LNM: 27/24

ST. MARYS RIVER - Neebish Channel

From 01 May 2024 to 01 Sep 2024 Roen Salvage Company will be conducting maintenance dredging in the Middle Neebish and West Neebish channels. Hours of operation are 24 hours a day 7 days a week. Tug David R Schanock can be contacted on VHF channels 7, 12 and 16. All mariners are requested to transit the area with caution.

LNM: 18/24

STRAITS OF MACKINAC

From 01 May 2024 to 01 October 2024 Kokosing Industrial Inc will be conducting stone laying over exposed sections of the new American Transmission Company 138V submarine power cables installed in 2021. Hours of operation are 24 hours a day 7 days a week. Tugs Nancy Anne, Champion, General, WM. Boyd, Shirley Ann and crew boat Timmy V can be contacted on VHF channels 13 and 16. All mariners are requested to maintain 500 yards away from survey vessels and to transit the area with caution.

LNM: 18/24

STRAITS OF MACKINAC - Point LaBarbe to McGulpin Point

From 29 May 2024 to 31 July 2024 Enbridge/Tetra Tech will be conducting underwater survey of Enbridge line 5 pipelines. Hours of operation are from 0600 to 1800 7 days a week. M/V Ugle Duckling can be contacted on VHF channels 13 and 16. The underwater survey effort will be conducted with a hybrid autonomous and remotely underwater vehicles (HAUV/ROV) with these vehicles supported from the vessel(s) noted above. All vessels are requested to remain 1500' (500-yard safety zone) away from the survey vessel.

LNM: 16/24

LAKE MICHIGAN – New Buffalo Harbor - Chart 14905

Shoaling has been reported near the middle of the channel immediately inside the break wall in New Buffalo Harbor, MI. The actual water depth is currently significantly below the charted depth. Mariners are urged to use caution when transiting the area. For further details, contact Sector Lake Michigan at (414) 747-7182 or VHF channel 16.

LNM: 15/22

LAKE MICHIGAN – Port Sheldon – Chart 14932

Shoaling has been reported near Pigeon Lake at the Port Sheldon entrance. The actual water depth is currently significantly below the charted depth. Mariners are urged to use caution when transiting the area. For further details, contact Sector Lake Michigan at (414) 747-7182 or VHF channel 16.

LNM: 15/23

LAKE MICHIGAN - Manistee

Shoaling has been reported in Lake Manistee in position 44-15.41N, 086-18.76W. All mariners are requested to transit the area with caution. For further details, contact Sector Lake Michigan at (414) 747-7182 or VHF channel 16.

LNM: 15/24

LAKE MICHIGAN - Manistee

From 28 June 2024 to 15 Aug 2024 the King Company will be conducting hydraulic dredging in Manistee MI. Hours of operation are 24 hours a day 7 days a week. Dredge Buxton II can be contacted on VHF channels 16, 18, and 73. All mariners are requested to transit the area with caution.

LNM: 26/24

LAKE MICHIGAN - Saugatuck

From 5 June 2024 to 31 Aug 2024 the King Company Inc will be conducting hydraulic dredging in the outer channel of Saugatuck MI. Hours of operation are 24 hours a day 7 days a week. Dredge Barry J can be contacted on VHF channels 16, 18 and 73. Submerged dredge pipe will be lying on the lake floor, marked by orange round buoys every 500 feet. (2) white buoys will be seen North and South of the dredge. The white buoys indicate winch anchor locations. The disposal area starts south of the pier 4,900' and runs for an additional 1,600' south. The primary contact will be the Superintendent Robert Lister. His cell number is listed below. During rough seas, our pipe pontoon will be floating outside of the channel. It is bright yellow, 25'x8'x6' and has (2) flashing lights on each end that come on at night.

LNM: 23/24

LAKE MICHIGAN – Muskegon Channel – Chart 14906

The Coast Guard has received reports that the depths at the entrance to Muskegon Lake are less than the charted depths. All mariners are requested to transit the area with caution.

LNM: 17/23

LAKE MICHIGAN – Grand Haven

From 16 May 2023 to 15 July 2024 the U.S. Army Corps of Engineers will be conducting pier work at USACE facility and outer pierhead. Hours of operation are Wednesday May 22 through Wednesday May 29th 0700 to 1630, Wednesday June 5th through Wednesday June 12th 0700 to 1630, and Wednesday June 19th through Wednesday June 26th 0700 to 1630. Tug Mike Donlon can be contacted on VHF channels 16 and 17. All mariners are requested to transit the area with caution.

LNM: 20/24

LAKE MICHIGAN - New Buffalo

From 22w Jul 2024 to 31 Jul 2024 The King Company will be dredging in the New Buffalo Harbor 24 hours a day 7 days a week. Dredge Buxton II can be contacted on VHF channels 16, 18 and 73, All mariners are requested to transit the area with caution.

LNM: 30/24

LAKE MICHIGAN - Gary Indiana

From 5 June 2024 to 30 Oct 2024 Geodynamics, an NV5 Company will be conducting hydrographic survey in support of nautical chart updates. The survey area has nearshore work off Gary, In, Michigan City, In, ~4-8 nmi work off Highland Park, IL, and further offshore work ~9-20 nmi offshore of Chicago, IL. Surveys will be conducted 24 hours a day, 7 days a week, on the RV Substantial and 12 hours a day, 7 days a week on the RV Benthos. The RV Benthos is a 30 ft Armstrong aluminum catamaran survey vessel operating multibeam sonar. Provide 1/2 nautical mile distance when possible. Mariners are urged to transit at their slowest safe speed in the vicinity of the survey vessels to minimize wake. All survey vessels have AIS and will monitor VHF channels 16/13.

LNM: 22/24

LAKE MICHIGAN – Whihala Beach

Whoazone has established a waterborne obstacle course at the Whihala Beach that will be in operation from 10 June 2024 to 25 August 2024. It is requested that all traffic remain outside the designated area and transit the area with caution. Contact Sector Lake Michigan at (414) 747-7182 or Whoazone general manager at (219)234-2615.

LNM: 16/24

LAKE MICHIGAN - Indiana Harbor Canal

There is an obstruction on the south side of the Federal channel at the Indiana Harbor Canal in East Chicago, Indiana at the location of the former Canal St. bridge.

LNM: 16/24

LAKE MICHIGAN – Sheboygan River – Chart 14922

Shoaling has been reported in entrance of the Sheboygan River in the vicinity of 43-44.928N, 087-42.170W AND 43-44.936N, 087-42.110W. The

LAKE MICHIGAN – Sheboygan River – Chart 14922

actual water depth is currently significantly below the charted depth. Mariners are urged to use caution when transiting the area. For further details, contact Sector Lake Michigan at (414) 747-7182 or VHF channel 16.

LNM: 24/22

LAKE MICHIGAN - Kenosha

From 15 July 2024 to 31 Aug 2024 Great Lakes Dock and Material will be conducting breakwater repair in Kenosha Harbor. Hours of operation are 24 hours a day 7 days a week. Vessels onscene can be contacted on VHF channels 16 and 18. All mariners are requested to transit the area with caution.

LNM: 28/24

Lake Michigan - Milwaukee River

From 5 Aug 2024 to 5 Nov 2024 Coleman Engineering will be conducting sediment sampling and borings in the Milwaukee River from North Ave Dam south confluence, Menominee River east to confluence, KK River from W. Becher St east and North to confluence, and Inner/Outer Harbor. Hours of operation are from 0700 to 1800 Monday thru Friday. All mariners are requested to transit the area with caution.

LNM: 31/24

LAKE SUPERIOR - Whitefish Point

From 19 July 2024 to 5 Aug 2024 Viking Marine Construction will be dredging in Whitefish Point Harbor. Hours of operation are 24 hours a day 7 days a week. Please contact the dredge operator on station 78 if necessary. The pipeline route will be from the outer harbor running to the south side beach. There will be approximately 4,500' of pipeline. The pipeline will be marked every 500' with bright orange buoys. The disposal site will consist of a raised piece of plastic pipe placed on a yellow pontoon tank. The pontoon tank will have 4 orange flashing lights during night operations. We encourage ALL boaters to stay at least 250' away from the yellow disposal pontoon. Please do not go near the pontoon.

LNM: 30/24

LAKE SUPERIOR – Little Lake Harbor – Chart 14961

Shoaling has been reported in the entrance of Little Lake Harbor exceeding 5 feet above low water datum near the channel edges. Some cross sections of the channel are shoaled nearly the full width to 2 feet or more above low datum. The harbor should not be considered as a functional harbor or refuge. All mariners are requested to transit the area with caution.

LNM: 47/22

Lake Superior - Marquette MI

Shoaling has been reported at the south pier of the LS&I Iron Ore facility in Marquette MI. The actual water depth is currently significantly below the charted water depth. All mariners are requested to use caution when transiting the area.

LNM: 31/24

LAKE SUPERIOR - Munising

The US Geological Survey and Monterey Bay Aquarium Research Institute will be conducting a joint science operation in southern Lake Superior 1 – 12 August 2024 utilizing a long-range autonomous underwater vehicle. The vehicle is orange and yellow and approximately 10 feet long with reflective tape on the hull and a red mast light. The area will encompass southern Lake Superior with focus area north of Munising in the vicinity of Pictured Rocks National Lake Shore to east of Grand Island. Vessels are requested to transit the area with caution and remain 200 m from the research equipment if spotted. Questions can be directed to Peter Esselman, phone: 734-546-5698, email: pesselman@usgs.gov.

LNM: 31/24

LAKE SUPERIOR - Duluth/Superior Harbor

From 05 Aug 2024 to 05 Sept 2024 J.F. Brennan Company will be dredging in the Duluth/Superior Harbor. Hours of operation 24 hours a day Monday through Friday. M/V Glenn Green can be contacted on VHF channels 13 and 16. All mariners are requested to transit the area with caution.

LNM: 32/24

SECTION VIII - LIGHT LIST CORRECTIONS

An Asterisk *, indicates the column in which a correction has been made to new information

(1) No.	(2) Name and Location	(3) Position	(4) Characteristic	(5) Height	(6) Range	(7) Structure	(8) Remarks
------------	--------------------------	-----------------	-----------------------	---------------	--------------	------------------	----------------

None

ENCLOSURES

(1) LNM Section I - Special Notices

1-Great Lakes Water Levels

LNM: 06/22

(2) LNM Section II - Discrepancies

N/A

LNM: 19/19

(3) LNM Section III - Temporary Changes and Temporary Changes Corrected

N/A
LNM: 19/19

(4) LNM Section IV - Chart Corrections

N/A
LNM: 19/19

(5) LNM Section V - Advance Notices

N/A
LNM: 19/19

(6) LNM Section VI - Proposed Changes

N/A
LNM: 19/19

(7) LNM Section VII - General

1-Marine Events
2-Current Ninth District Bridge Maintenance/Activities
3-Waterway Analysis and Management System Survey
LNM: 19/19

(8) LNM Section VIII - Light List Corrections

N/A
LNM: 19/19

J. P. Hickey, RADM
U. S. Coast Guard
Commander, Ninth Coast Guard District

GREAT LAKES, CONNECTING CHANNELS AND ST. LAWRENCE RIVER WATER LEVELS AND DEPTHS

Expected water levels on the Great Lakes, Connecting Channels and the St. Lawrence River are given in inches above (+,0) or below (-,0) Low-Water Datum (LWD,0). LWD is a plane of reference on a navigation chart, also known as Chart Datum. LWD elevations shown below are given in International Great Lakes Datum, 1985 (IGLD 1985,0).

	Forecast Point	Low Water Datum IGLD 1985	Expected Levels (inches above or below Low Water Datum,0)				
			Current	Week 1	Week 2	Week 3	Week 4
			26-Jul	2-Aug	9-Aug	16-Aug	23-Aug
GREAT LAKES							
Lake Ontario		243.3	34	32	32	30	29
Lake Erie		569.2	44	43	42	40	39
Lake St. Clair		572.3	43	42	41	39	38
Lake Michigan-Huron		577.5	28	27	27	27	27
Lake Superior		601.1	12	12	12	12	12
ST. LAWRENCE RIVER							
Above Long Sault Dam	0	237.9	34	34	35	34	34
Above Iroquois Dam	1	240.3	27	27	27	26	25
Ogdensburg	2	242.4	29	28	28	27	25
Alexandria Bay	2.1	243.0	32	31	30	29	28
Head of river at Cape Vincent	3	243.3	34	32	32	30	29
DETROIT RIVER							
Lake Erie at Pelee Passage	4	569.2	44	43	42	40	39
Mouth of River at Gibraltar	5	569.5	45	43	42	41	39
Fort Wayne	5.1	571.1	47	46	45	43	42
Head of River above Belle Isle	6	572.0	44	43	42	40	39
ST. CLAIR RIVER							
Mouth of River at St. Clair Flats	7	572.3	43	42	41	39	38
Algonac	8	572.8	45	44	43	42	41
St. Clair	9	574.4	39	38	38	37	37
Blue Water Bridge	10	576.2	35	35	34	34	33
Head of River at Fort Gratiot	11	577.2	30	30	30	29	29
Lake Huron Approach Channel	12	577.5	28	27	27	27	27
ST. MARYS RIVER							
Mouth of River at Detour	13	577.5	28	27	27	27	27
West and Middle Neebish	14	577.8	25	25	25	24	24
Head of Little Rapids	15	578.4	24	24	24	23	23
U.S. Slip	16	578.7	23	23	23	22	22
Above Locks	17	600.4	14	14	14	14	14
Head of River at Point Iroquois	18	601.1	12	12	12	12	12

UNDERSTANDING THE FORECAST

Available water depth is determined for a location by adding (if+) or subtracting (if-) the amount from the above table to the appropriate channel depth shown in the profile Connecting Channel Depths Graphic or to water depths shown on National Oceanic and Atmospheric Administration (NOAA) navigational charts.

CAUTION

Depths so determined are representative of a still water surface elevation, disturbed by neither wind nor other causes. Depths, however, may be reduced or increased as much as several feet for short periods due to these disturbances, or when sections of channels develop shoals. Vessel masters should refer to "Local Notice to Mariners" for extent of shoaling and scattered bedrock projections in all channels. Ice conditions can have a dramatic impact on actual channel depth and can lead to large short-term water level fluctuations. Ice information can be found at the National Ice Center's website.

FOR FURTHER INFORMATION CONTACT:

Detroit District Corps of Engineers
477 Michigan Avenue
Detroit MI, 48226
1-888-694-8318 ex. 1
email: hhpm@usace.army.mil

FOR MORE INFORMATION VISIT:

[Detroit District Great Lakes Homepage](#)
[International Joint Commission](#)
[Great Lakes Information Network](#)
[NOAA Tides and Currents](#)
[U.S. Coast Guard - District 9](#)

WATER LEVEL INFORMATION SUPPLIED BY:

NOAA, National Ocean Service
SSMC4, STATION 7523
1305 East-West Hwy
Silver Spring, MD 20910-3233
(301) 713-2902

GREAT LAKES-MARINE EVENT-SAFETY ZONES-SECURITY ZONES

Events listed below are those events that may have accompanying special local regulations.

<u>Location</u>	<u>Name of Event</u>	<u>Date / Time</u>	<u>POC</u>	<u>Tel #</u>
Massena	Major League Fishing	6-11 Aug	0700-1600	Daniel Fennel 270-210-6133
St. Lawrence River	MLFLW Fishing Tournament	23-24 Aug	0600-1700	Mark McWha 270-703-9551
Alexandria Bay	Pirate Days	10-Aug-24	1300-1430	Rick Thomson 315-482-9531
Waddington	Bass Events LLC	15-18 Aug	0700-1700	Lisa Talmadge 505-550-4765
Sylvan Beach	Canal Fest Ski Show	11-Aug-24	1100-1800	Joe Serth 518-852-5378
Morristown, NY.	Brockville Yacht Club	15 May - 15 Oct	1730-2030	Jason VanBlitterswyk 613-342-4155

LAKE ONTARIO

Sodus Bay, NY	Breakwater Barrier Construction Project outside Sodus	1 Aug- 31 Oct	0700-2000	Glen Roet 315-564-6784
Rochester, NY	Brown Jug Afternoon Race	2-3 Sep	1200-1530	William Dexter 585-461-2422
Rochester, NY	Thistle Sailboat Fall Frontier Regatta	7-8 Sep	1100-1400	William Dexter 585-461-2422
Rochester, NY	RYC 2024 High School Sailing Program	13 Mar-10 Nov	various	Peter Mendick 585-342-5511
Rochester, NY	RYC Jr Sail Instruction	19 Jun- 12 Aug	0900-1600	Peter Mendick 585-342-5511
Rochester, NY	Junior Olympics	9-11 Aug	various	Peter Mendick 585-342-5511
Rochester, NY	Hospice Regatta	16-17 Aug	various	Peter Mendick 585-342-5511
Rochester, NY	Lambert Lai Regatta	23-25 Aug	various	Peter Mendick 585-342-5511
Rochester, NY	Genesee Yacht Club Tuesday Night Racing	21 May - 17 Sep	1730-2000	Kenny Fourspring 814-746-2183
Rochester, NY	Genesee Yacht Club Saturday Morning Racing	25 May - 5 Oct	1000-1300	Kenny Fourspring 814-746-2183
Rochester, NY	Genesee Yacht Club Scotch Bonnet Light Race	23-24 Aug	1700-1700	Kenny Fourspring 814-746-2183
Rochester, NY	RYC 2024 One Design and Offshore Racing Series	14 May - 14 Oct	various	Peter Mendick 585-342-5511
Niagara Falls, NY	Red Bull Niagara Swoop	04SEP24-07SEP24	0000-1830	Joe Kazar 518-859-6946
Rochester, NY	Head of Genessee Regatta	12OCT24-16OCT24	0600-1800	Liana Spencer 585-967-8683

LAKE ERIE

Erie, PA	Night Light House Race	16-Aug-24	2000-0300	Sharon Dale 814-724-9968
Buffalo, NY	China Light Series (Tuesday Night Series), Buffalo Harb	21 May - 3 Sep	1810-2130	Laura Redding 716-574-0540
Buffalo, NY	Wednesday Night Series, Buffalo Harbor Sailing Club R	22 May - 4 Sep	1810-2130	Laura Redding 716-574-0540
Buffalo, NY	Double Hand Series, Buffalo Harbor Sailing Club Race S	25 Jul- 15 Aug	1810-2130	Laura Redding 716-574-0540
Buffalo, NY	Last Chance Regatta, Buffalo Harbor Sailing Club Race	11-Sep-24	1030-1430	Laura Redding 716-574-0540
Buffalo, NY	Die Hard Series, Buffalo Harbor Sailing Club Race Seasc	11 Sep -25 Sep	1810-2130	Laura Redding 716-574-0540
Buffalo, NY	Head of the Niagara	13-Oct-24	0700-1400	Ian Suchan 716-604-5156

Cleveland, OH	28th Annual Head of the Cuyahoga Regatta	21-Sep-24	0500-1700	Jen Forbes	(216)308-4183
Madison Township, OH	Madison Township Light Up The Park	10-Aug	2130-2200	John Cross	(330)650-1776
Erie, PA	Night Light House Race	16AUG24-17AUG24	2000-0300	Sharon Dale	814-724-9968
Cleveland, OH	Blazing Paddles Paddlefest 2024	15 September 2024	10:00 a.m. - 3:00 p.m.	James Ridge	216-496-3763
Conneaut, OH	D-Day Conneaut	15-17 August 2024	12:30 p.m. - 5:30 p.	Betsy Bashore	419-350-6354
Cleveland, OH	Whiskey Island Paddlefest	17 August 2024	7:00 a.m. - 1:30 p.m.	Rachel Nagle	440-679-1269
Cleveland, OH	Tri CLE Rock Roll Run	18 August 2024	4:00 a.m. - 10:30 a.m.	Capt Drew Ferguson	216-701-5582
Fairport Harbor, OH	Grand River Sailing Regatta	23 August 2024	6:00 a.m.-9:30 a.m.	Paul Mathews	440-289-5262
Fairport Harbor, OH	Grand River Sailing Regatta	24 August 2024	8:30 a.m.-3:30 p.m.	Paul Mathews	440-289-5262
Fairport Harbor, OH	Grand River Sailing Regatta	25 August 2024	8:30 a.m.-1:30 p.m.	Paul Mathews	440-289-5262
Buffalo, NY	Trump Boat Parade	31-Aug-24	1300-1600	Ronald Rice	716-907-3007
Buffalo, NY	Bills Mafia Boat Parade	1-Sep-24	1230-1400	Brandon Bova	716-392-1753
Dunkirk, NY	Innovative Outdoor Walleye Challenge	16-Aug-24	0600-1500	Jim Steel	716-983-7867

LAKE ST. CLAIR/St. Clair River

LAKE MICHIGAN & Green Bay

Sheboygan, WI	Sheboygan MidWest Challenge	09AUG24 - 11AUG24	8am - 6pm	Michelle Petro	352-572-8686
Racine, WI	Great Lakes Watercross - Racine	09AUG24 - 11AUG24	7am - 6pm	Brad Bohat	262-496-8549
Muskegon, MI	Wings over Muskegon	09AUG24 - 11AUG24	5am-5pm	Kenneth Efting	801-698-8187

RESEARCH EQUIPMENT IN WATER

Lake Superior

August 1 to August 12, 2024

Monterey Bay Aquarium Research Institute (MBARI) and US Geological Survey (USGS) will operate one Autonomous Underwater Vehicle to study fish populations in Lake Superior waters. The vehicle will be launched from Munising, MI on August 1 and will traverse offshore transects throughout the survey area. The vehicle will be recovered on or around August 12.

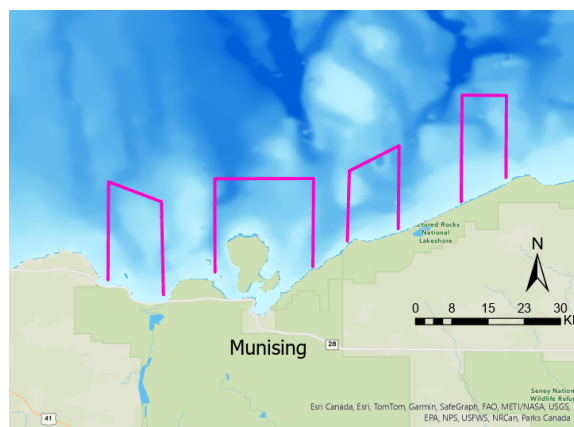
VESSELS ARE REQUESTED TO TRANSIT THE AREA WITH CAUTION AND REMAIN GREATER THAN 200 METERS AWAY FROM THE RESEARCH EQUIPMENT IF SPOTTED.

The autonomous underwater vehicle is battery powered, carries important fisheries acoustic research instrumentation, and is controlled from shore and monitored 24/7 through satellite/cellular communications. It remains underwater while moving but comes to the surface periodically to communicate with shore.

Color: Orange & yellow
Light: Red light on mast;
Reflective tape on hull
Radar Reflector: No
Notation: "MBARI"
Length: 10 ft & **Width:** 1 ft



Height: 10 inches above water line
Draft: N/A **Avg. speed:** 2 kts
GPS / AIS / Cameras: No
AIS identifiers: N/A



Lake Superior transect locations.

USGS CONTACT

Peter Esselman pesselman@usgs.gov
Mobile: (734) 546-5698

MBARI CONTACT

Brian Kieft bkieft@mbari.org
Mobile: (831) 334-7658



DNR
MICHIGAN DEPARTMENT OF NATURAL RESOURCES

INTEROFFICE COMMUNICATION

24 July 2024

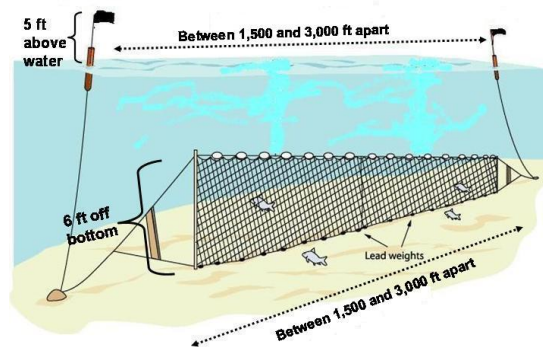
TO: Natural resource agency personnel and mariners operating on Lake Superior

FROM: Shawn P. Sitar, Science Officer, RV Lake Char, Marquette Fisheries Research Station

SUBJECT: **updated** RV Lake Char operations in Lake Superior 24 July-30 August

This is a note to inform you that we have updated our deepwater and summer lake trout gill net surveys aboard the Research Vessel *Lake Char* in Lake Superior from 24 July to 30 August (see attached updated schedule).

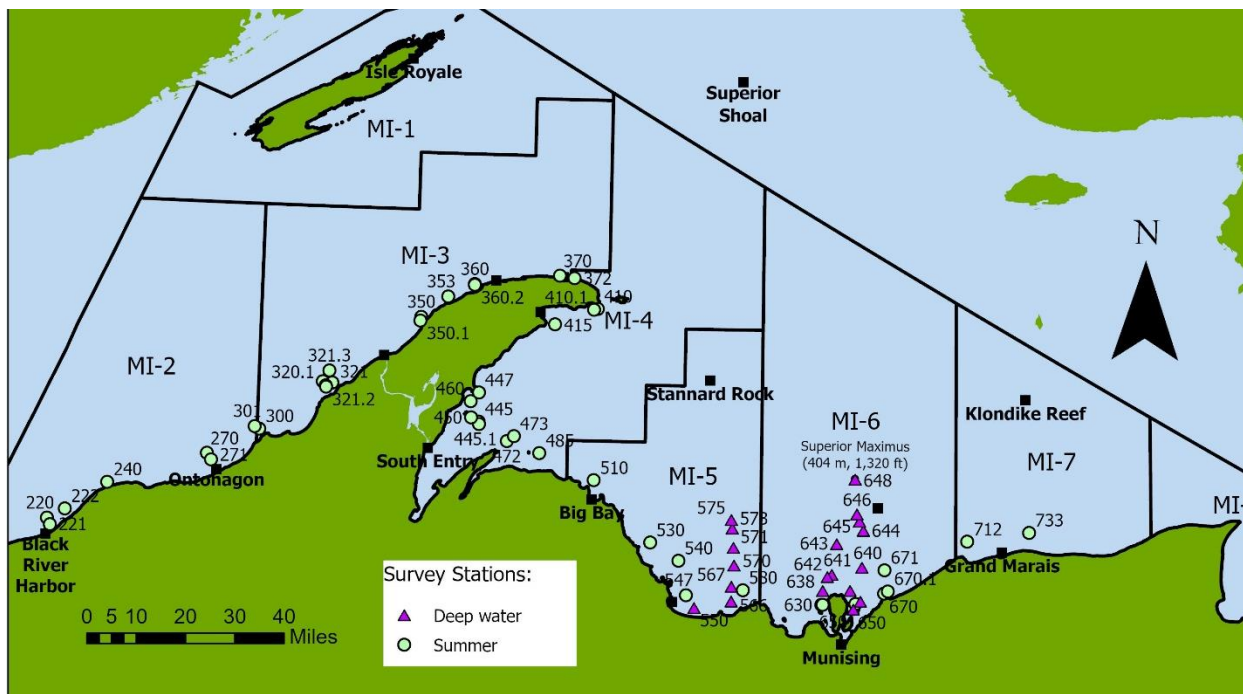
We will be setting bottom set gill nets that are 1,500-3,000 ft long, extend about 6 feet from the bottom and are set overnight. Our deepwater sampling stations will be at all depths from about 100 ft to 1,320 ft between Shot Point (Marquette) to the Munising Area and will be within a few miles from shore to 30 miles offshore. Our summer survey will be within a few miles of shore at depths between 90 and 250 ft. Our nets are marked with black and orange flagged staff buoys that are labeled with our agency identification.



We will be conducting our surveys in the following areas of Lake Superior: Deepwater survey: between Shot Pt (Marquette) and Munising Bay/Pictured Rocks area. Summer Survey: west of Keweenaw Peninsula from Black River Harbor to Copper Harbor; outer Keweenaw Bay from Bete Grise to the Huron Islands; Big Bay; Marquette; Au Train, Munising, and Grand Marais.

Attached is the cruise schedule, map, and sampling station coordinates for the lake trout survey. Note that weather conditions may delay the sampling dates. Please provide copies of this cruise schedule to all pertinent personnel. Please note that we can be reached via MIDNR 800 MHz Radios on our primary radio channel on Zone B, FIMARQT, or via marine radio channel 16. Our radio call sign is *RV Lake Char*. We can also be reached on the vessel via cell phone number 906-458-6925.

If you have any questions regarding our sampling schedule, please feel free to contact me by e-mail at sitars@michigan.gov or by cell phone at (906)-235-1581. Thank you for your cooperation.



RV Lake Char Deepwater and Summer Survey sampling stations July-August 2024.

2024 Deepwater lake trout survey schedule for RV Lake Char, Marquette Fisheries Research Station (MFRS), Michigan Department of Natural Resources.

Dates	Column2	Station_no	site	latitude	longitude
07/24 -	07/25/2024	644	FAT 6-8	46 ^o 45" N	86 ^o 33.7" W
07/24 -	07/25/2024	643	FAT 6-7	46 ^o 42.6" N	86 ^o 40.5" W
07/25 -	07/26/2024	645	FAT 6-9	46 ^o 46.6" N	86 ^o 34.7" W

2024 Summer lake trout survey schedule for RV Lake Char, Marquette Fisheries Research Station (MFRS), Michigan Department of Natural Resources.

Dates	Station_no	site	latitude	longitude
08/05 - 08/06/2024	530	Garlic Island	46°42.32"N	87°28.27"W
08/05 - 08/06/2024	540	Granite Point (Pinnacle)	46°39.21"N	87°20.95"W
08/06 - 08/07/2024	510	Big Bay Point	46°53.09"N	87°43.03"W
08/06 - 08/07/2024	485	Huron Islands (graded mesh)	46°57.63"N	87°57.17"W
08/06 - 08/07/2024	473	Point Abbaye (out)(graded mes	47°00.50"N	88°03.86"W
08/07 - 08/08/2024	445	Halberg's Reef	47°02.91"N	88°13.03"W
08/07 - 08/08/2024	447	Traverse Point	47°08.02"N	88°13.18"W
08/07 - 08/08/2024	450	Traverse Island (south)	47°03.60"N	88°15.03"W
08/12 - 08/13/2024	300	Fourteen Mile Point (in)	47°00.38"N	89°09.40"W
08/12 - 08/13/2024	301	Fourteen Mile Point (out)	47°00.80"N	89°10.65"W
08/13 - 08/14/2024	220	Black River Harbor (out)	46°43.00"N	90°02.77"W
08/13 - 08/14/2024	221	Black River Harbor (in)	46°41.90"N	90°01.98"W
08/13 - 08/14/2024	240	Porcupine Mountains	46°49.85"N	89°47.82"W
08/14 - 08/15/2024	270	Ontonagon (out)	46°55.75"N	89°22.57"W
08/14 - 08/15/2024	271	Ontonagon (in)	46°54.63"N	89°21.50"W
08/15 - 08/16/2024	320	Freda (out) (graded mesh)	47°09.53"N	88°52.25"W
08/15 - 08/16/2024	321	Freda (in) (graded mesh)	47°09.00"N	88°51.00"W
08/15 - 08/16/2024	350	Hills Creek	47°21.05"N	88°28.62"W
08/19 - 08/20/2024	360	Great Sand Bay	47°27.10"N	88°15.00"W
08/19 - 08/22/2020	370	Copper Harbor	47°29.00"N	87°52.93"W
08/20 - 08/21/2024	410	Keystone Bay	47°23.26"N	87°42.93"W
08/20 - 08/21/2024	415	Point Isabelle (South Point)	47°20.39"N	87°53.93"W
08/21 - 08/22/2024	580	Laughing Fish Point	46°34.19"N	87°04.39"W
08/26 - 08/27/2024	650	Trout Point A	46°32.00"N	86°35.57"W
08/26 - 08/27/2024	630	Wood Island (graded mesh)	46°31.76"N	86°44.32"W
08/27 - 08/28/2024	670	Grand Portal Point (in)	46°33.88"N	86°28.32"W
08/27 - 08/28/2024	671	Grand Portal Point (out)	46°37.96"N	86°28.22"W
08/28 - 08/29/2024	712	Au Sable Point	46°43.02"N	86°07.04"W
08/28 - 08/29/2024	733	Perry's Landing (graded mesh)	46°44.58"N	85°51.26"W

CURRENT NINTH DISTRICT BRIDGE MAINTENANCE/ACTIVITIES

Local Notice to Mariner Week [33/24]

Note: Short-term bridge maintenance closures and various activities may only be published [through Broadcast Notice to Mariners*](#) and may not be included [in the Local Notice to Mariners*](#). Mariners should both *listen* to Broadcast Notice to Mariners (BNM) and *read* Coast Guard Local Notice to Mariners (LNM) available by clicking [HERE](#) for the most recent and complete marine information.

* [Broadcast Notice to Mariners issued on VHF-FM Marine Channels 16 & 22 \[Subscribe Here\]](#)

* [Local Notice to Mariners \[Subscribe Here\]](#)

To [Subscribe to Bridge Maintenance & Activities Summary email click here.](#)

There is a Microsoft Teams meeting with the US Coast Guard, Mariners, and Bridge Owners being held on the last Wednesday of every month at 1300 ET, and **YOU** are welcome to join in. **Join on your computer or mobile app.** [Click here to join the meeting](#) **Or call in (audio only) +1 410-874-6742,,515305017#** Phone Conference ID: 515 305 017#

PUBLIC NOTICES FOR 9th District BRIDGES: <https://www.navcen.uscg.gov/D9BN>

Please contact us with any questions or concerns:

Blair Stanifer (216) 902-6086 or William.B.Stanifer@uscg.mil
Lee Soule (216) 902-6085 or Lee.D.Soule@uscg.mil
Michael Walker (216) 902-6087 or Michael.O.Walker2@uscg.mil
FAX: (216) 902-6088

Commander (dpb)
Ninth Coast Guard District
1240 E. 9th St. Room 2047B
Cleveland, Ohio 44199-2001

FEDERAL REGULATIONS DOCKET STATUS

[Regulations.gov](#) enter the USCG - docket number in the search window to review all comments and documents associated with the project.

USCG-2023-0185 - FR – Sandusky Bay – to Command for Approval
USCG-2024-0018 - FR -Cherry Street Bridge, Milwaukee River – Pending Legal Review
USCG-2024-0407 - TD - Manitowoc, WI – Pending Legal Review

GREAT LAKES REGION

GREAT LAKES, Drawbridge Delay Reports, Chart 14500

Mariners are requested to submit Reports of Drawbridge Signal/Operations Delays directly to the Ninth Coast Guard District Bridge Branch using the attached form. Reports of signal or drawbridge delays have been processed by Coast Guard Marine Safety Offices in recent years but will now be processed and traced by the Bridge Branch. Reports may be sent by mail, e-mail, or by fax. The mailing address and fax number are on the form.

[08/05] [34/12]

GREAT LAKES, Drawbridge Civil Monetary Penalty Adjustments for Inflation, Chart 14500

DHS adjusts for inflation its civil monetary penalties for 2024, in accordance with the Federal Civil Penalties Inflation Adjustment Act Improvements Act of 2015 and Executive Office of the President (EOP) Office of Management and Budget (OMB) guidance. DHS is also accounting for additional civil monetary penalties that the U.S. Coast Guard is statutorily authorized to collect. The new penalty amounts will be effective for penalties assessed after June 28, 2024 whose associated violations occurred after November 2, 2015.

The Coast Guard is authorized to assess nearly 150 penalties involving maritime safety and security and environmental stewardship that are critical to the continued success of Coast Guard missions. Various statutes in titles 14, 16, 19, 33, 42, 46, and 49 of the U.S.C. authorize these penalties. Titles 33 and 46 authorize the vast majority of these penalties as these statutes deal with navigation, navigable waters, and shipping. For a more detailed discussion of the civil monetary penalties assessed by the Coast Guard, see the 2016 IFR preamble at [81 FR 42992](#). To view the full document, visit 89 FR 53849. **Bridges: New penalty is \$53,516.00 (for each violation, per day, and/or per vessel).**

ST. LAWRENCE SEAWAY

NY STATE CANAL SYSTEM

(Everything West of St. Johnsville, NY)

NY - NEW YORK STATE CANAL SYSTEM - Erie Canal – Chart 14786

From March 15, 2024, through **January 31, 2025**, daily, contractors will utilize scaffolding and man lifts above low steel of the E144C I-390 Bridge at mile 258.65 and the E144D I-390 Bridge at mile 258.68 over the Erie Canal.

[42/23]

NY - NEW YORK STATE CANAL SYSTEM - Erie Canal – Chart 14786

From May 6 through **August 31, 2024**, between the hours of 0700 and 1700, Monday through Friday Snooper trucks will be washing the all the bridges from the E-29 Lansing Road Bridge at Mile 74.94 to the E-52 Erie Boulevard Bridge at Mile 115.08 over the Erie Canal. Spotters will warn of approaching vessels and move the man lift to allow vessels to pass. Mariners should avoid driving through or under clean falling water from the bridge.

[11/24]

NY - NEW YORK STATE CANAL SYSTEM - Erie Canal – Chart 14786

From June 10, through **November 8, 2024**, between the hours of 0600 and 2100, daily, a 30-foot Harcon will be inspecting all bridges from E101 Leach Road Bridge at Mile 221.01 to E211 County Road 5 Bridge at Mile 304.13 over the Erie Canal. The Harcon will monitor VHF-FM marine Channel 16 and will move to accommodate vessels if a 30-minute advance notice is provided.

[17/24]

NY - NEW YORK STATE CANAL SYSTEM - Cayuga – Seneca Canal – Chart 14786

From July 7, through **September 30, 2024**, scaffolding that hangs approximately 6-feet below low steel will be installed under one half of the S6, Ovid Street Bridge at Mile 8.65, over the Cayuga – Seneca Canal.

[18/24]

NY - NEW YORK STATE CANAL SYSTEM – Erie Canal, Cayuga – Seneca Canal, and Oswego Canal, Chart 14876

From May 20 through **September 27, 2024**, between the hours of 0730 and 1700, Monday through Friday a 35-foot Harcon will be inspecting the bridges between the E-64 Brewerton Road Bridge at Mile 150.85 and the E-92 Armitage Road Bridge at Mile 205.59 over the Erie Canal, including the S1 US 20 Bridge at Mile 2.97 to the S10 Gorham Street, Mile 11.71, over the Cayuga-Seneca Canal, and the O05 Humansville Road Bridge, over

the Oswego Canal. The Harcon will move with a 30-minute advance notice. Mariners should provide advance notice on VHF -FM Marine Channel 16.

[18/24]

NY - NEW YORK STATE CANAL SYSTEM – Erie Canal, Cayuga – Seneca Canal, and Oswego Canal, Chart 14876

From May 20 through **August 31, 2024**, between the hours of 0800 and 2000 daily, contractors will be utilizing snooper trucks to wash the underside of all bridges from the E-99 CSXT Railroad Bridge at Mile 219.94 through E-212 Marshal Road Bridge at Mile 305.63 over the Erie Canal. Spotters will warn works of approaching vessels and move the man lift to allow vessels to pass. Mariners should avoid navigating under large amounts of falling water.

[20/24]

NY - NEW YORK STATE CANAL SYSTEM - Erie Canal – Chart 14786

From September 29, 2024, through **October 1, 2024**, inspectors will install scaffolding under the E-101 Leach Road Bridge at Mile 221.01 over the Erie Canal that extends approximately 6-feet below low steel under one half of the bridge.

[21/24]

NY - NEW YORK STATE CANAL SYSTEM - Erie Canal – Chart 14786

From July 8, 2024, through **November 30, 2024**, scaffolding will be installed under the E-234 Transit Road Bridge at Mile 320.97 over the Erie Canal that hangs approximately 3-feet below low steel.

[24/24]

NY - NEW YORK STATE CANAL SYSTEM - Erie Canal – Chart 14786

From March 1, 2025, through **June 30, 2025**, scaffolding will be installed under the E-234 Transit Road Bridge at Mile 320.97 over the Erie Canal that hangs approximately 3-feet below low steel.

[24/24]

LAKE ONTARIO

NY - LAKE ERIE – Rochester Harbor – Chart 14815

On **September 15, 2024**, between the hours of 0745 and 0930, the O'Rourke Bridge at Mile 1.25 over the Genesee River will be secured to masted navigation in conjunction with the Rochester Marathon. Vessels able to pass under the bridge without an opening may do so at any time.

[16/24]

LAKE ERIE - MAHONING RIVER - NIAGARA RIVER- ALLEGHENY RIVER

NY - LAKE ERIE – Buffalo Harbor – Chart 14833

From January 1 through **March 31, 2025**, the Canadian National International Railroad Bridge at mile 3.8 over the Black Rock Canal will be secured to masted navigation for maintenance. Vessels able to pass under the bridge without an opening may do so at any time.

[30/23]

NY - LAKE ERIE – Niagara River – Chart 14833

From August 28, 2023, through **July 26, 2026**, scaffolding that extends approximately 3-feet below low steel will be installed under the South Grand Island Bridge at Mile 3.40 and the North Grand Island Bridge at Mile 18, both over the Niagara River. A 16-foot by 32-foot materials barge and a 4-foot by 40-foot temporary dock will be used under the bridges.

[32/23]

OH - LAKE ERIE – Cleveland Harbor – Chart 14839

From June 1, 2024, through **September 30, 2026**, daily scaffolding will be installed under the I-490 Bridge at mile 4.79 over the Cuyahoga River that hangs approximately 4-feet below low steel. Snooper vehicles and manlifts will be used. Spotters will warn workers of approaching vessels and move the manlift to allow vessels to pass.

[43/23]

NY - LAKE ERIE – Niagara River – Chart 14833

From June 15 through **September 30, 2024**, between the hours of 0700 and 1600, Monday through Friday. A 100- foot by 34-foot barge will be washing the South Grand Island Bridge at Mile 3.40 and the North Grand Island Bridge at Mile 18, both over the Niagara River. Mariners should avoid passing under clean falling water. The barge will monitor VHF-FM Marine Channel 16 and will make passing arrangements with vessels as needed.

[16/24]

OH - LAKE ERIE – Toledo Harbor – Chart 14847

On **September 15, 2024**, between the hours of 1000 and 1130, the Martin Luther King Jr. Memorial Bridge at Mile 4.30 over the Maumee River will be secured to masted navigation in conjunction with the ProMedica Be Fast Event. Vessels able to pass under the bridge without an opening may do so at any time.

[21/24]

OH - LAKE ERIE – Cleveland Harbor – Chart 14839

On **October 5, 2024**, between the hours of 0700 and 1400, the Carter Road Bridge at Mile 2.43 over the Cuyahoga River will be secured to masted navigation in conjunction with the Towpath Marathon. Vessels able to pass under the bridge without an opening may do so at any time.

[23/24]

OH - LAKE ERIE – Toledo Harbor – Chart 14847

From July 17, 2024, through **March 31, 2025**, a 60-foot by 60-foot barge will be working at the Martin Luther King Jr. Memorial Bridge at Mile 4.30 over the Maumee River. The barge will move to accommodate larger vessels if provided a 3-hour advance notice directly to the barge on VHF-FM Marine Channel 16. Additionally, from December 1, 2024, through March 31, 2025, scaffolding/containment will be installed that hangs approximately 3-feet below low steel of the bridge bascule spans; however, the scaffolding will allow the bridge to operate normally.

[29/24]

NY - LAKE ERIE – Niagara River – Chart 14833

From July 29, 2024, through **August 16, 2024**, a 100- foot by 34-foot barge and 16- foot by 32-towboat will be inspecting the South Grand Island Bridge at Mile 3.40 over the Niagara River. The barge will monitor VHF-FM Marine Channel 16 and will move to accommodate vessel traffic if a 30-minute notice is provided.

[29/24]

OH - LAKE ERIE – Cleveland Harbor – Chart 14839

On **September 9, 2024**, between the hours of 0700 and 1700, inspectors will utilize a Snooper truck under the Willow Avenue Bridge at mile 1.02 over the Old River Channel of the Cuyahoga River. The bridge will require a 1-hour advance notice to clear the inspectors and open the bridge. Advance notice should be provided directly to the drawtender.

[32/24]

*****REVISED*****

OH - LAKE ERIE – Toledo Harbor – Chart 14847

On **August 23, 2024**, between the hours of 1900 and 2100, the Martin Luther King Jr. Memorial Bridge at Mile 4.30 over the Maumee River will be secured to masted navigation in conjunction with the Toledo Pride Festival's 5K Run. Vessels able to pass under the bridge without an opening may do so at any time.

[29/24] [33/24]

OH - LAKE ERIE – Toledo Harbor – Chart 14847

From August 14 through **November 30, 2024**, between the hours of 0700 and 1600, Monday through Friday a 17-foot by 24-foot barge will be working at the Martin Luther King Jr. Memorial Bridge at Mile 4.30 over the Maumee River. The barge will monitor VHF-FM Marine Channel 16 and passing arrangements can be made directly with the Great Lakes Concrete Restoration Barge.

[33/24]

DETROIT RIVER - LAKE ST. CLAIR - ST. CLAIR RIVER – RIVER ROUGE

*****REVISED*****

MI - DETROIT RIVER – Main Channel – Chart 14848

From November 1, 2022, through **December 1, 2024**, contractors will be constructing the Gordie Howe International Bridge at mile 16.7 over the Detroit River. No equipment will be placed in the water. Overhead work will have temporary steady burning yellow lights to mark new construction. A moving platform with quick flashing red lights and orange or red ball fenders on the bottom four corners with a safety net that hangs approximately 15-feet below low steel will be constructing the bridge. Mariners should avoid passing directly under the platform at any time. Snooper type vehicles will be utilized on the bridge throughout construction. Spotters will warn of approaching vessels and move the man lift to allow vessels to pass. When construction is completed and all equipment removed, the final vertical clearances for the bridge will be 152-feet for the center 100-feet of the navigation channel. No less than 137-feet of vertical clearance will be available at the channel limits. Vertical clearances are based on IGLD85.

[47/20] [07/22] [02/24] [30/24]

NOTE: Over the water construction is basically complete and extensions to construction have been issued to accommodate demobilization of equipment.

MI – SAINT CLAIR RIVER – Chart 14852

From June 14, 2024, through **December 20, 2025**, scaffolding that hangs approximately 4-feet below low steel will be installed under the Blue Water Bridge at Mile 39.1 over the St. Clair River. Steady burning yellow lights will warn mariners of the temporary reduction in clearances.

[22/24]

MI - DETROIT RIVER – Trenton Channel – Chart 14848

On August 19 and **August 20, 2024**, between the hours of 0900 and 1600, Divers will be inspecting the Grosse Ile Parkway Bridge (Free Bridge) at Mile 5.60 over the Trenton Channel of the Detroit River. The bridge will require a 15-minute advance notice for openings. Mariners should provide advance notice directly to the drawtender.

[33/24]

OH - LAKE ERIE – Cleveland Harbor – Chart 14839

On **September 9, 2024**, between the hours of 0800 and 1600, the North Coast Pedestrian Bridge at the mouth of the North Coast Harbor will require a 1-hour advance notice for openings while inspectors use a man lift and small vessel to inspect the bridge. Mariners should provide advance notice directly to the drawtender.

[34/24]

LAKE HURON

*****REVISED*****

MI - LAKE HURON – Saginaw River – Chart 14867

From April 19, through **November 30, 2024**, the Independence Street Bridge at Mile 3.88, over the Saginaw River will have two barges 80-foot by 40-foot or smaller working under the bridge. If needed the barges will move with a 2-hour advance notice. Mariners should provide advance notice for the barges by calling 608-425-0171.

[17/23] [47/23] [17/24]

MI - LAKE HURON – Saginaw River – Chart 14867

From December 1, 2024, through **March 31, 2025**, the Independence Bridge, mile 3.88, over the Saginaw River will be secured to masted navigation. Vessels able to pass under the bridge without an opening may do so at any time. Two 80x40-foot barges will be working under the bridge, and they will move if a 2-hour advance notice is provided by calling 608-425-0171. During the winter the ice will be degraded due to the movement of barges and the ice under the bridge should be considered unsafe for pedestrians or vehicles.

[21/24]

MI - LAKE HURON – Saginaw River – Chart 14867

From December 1, 2024, through **March 31, 2025**, the Lafayette Street Bridge at Mile 6.78, over the Saginaw River will be secured to masted navigation. Vessels able to pass under the bridge without an opening may do so at any time. Additionally, starting on October 1, 2024, two 80x40-foot barges will be working under the bridge, and they will move if a 2-hour advance notice is provided by calling 608-425-0171. During the winter, the ice will be degraded due to the movement of barges and the ice under the bridge should be considered unsafe for pedestrians or vehicles.

[30/24]

MI - LAKE HURON – Saginaw River – Chart 14867

From December 15, 2024, through **November 30, 2025**, a cofferdam will be installed that measures approximately 60-feet by 95-feet, that reduces the navigation channel by 2-feet on either side leaving approximately 146-foot channel available for vessels. The red pier lights will be moved to the cofferdam sides to show the temporary reduction in horizontal clearance.

[33/24]

SAINT MARY'S RIVER

LAKE MICHIGAN - EAST

*****REVISED*****

MI - LAKE MICHIGAN – St Joseph River – Chart 14930

From July 8 through **August 30, 2024**, between the hours of 0600 and 1800, Monday through Saturday, a 50-foot by 80-foot barge will be performing maintenance to the CSX Railroad Bridge at mile 0.67 over the Saint Joseph River. The barge will move to accommodate vessel traffic if a 2-hour advance notice is provided directly to the barge on VHF-FM Marine Channel 16.

[27/24] [33/24]

MI - LAKE MICHIGAN – St Joseph River – Chart 14930

From December 16, 2024, Through **April 7, 2025**, and again from December 16, 2025, Through April 7, 2026, the Twin Cities Bicentennial Bridge at Mile 1.30, over the St. Joseph River, will be secured to masted navigation for maintenance. Vessels able to pass under the bridge without an opening may do so at any time.

[32/24]

LAKE MICHIGAN – MICHIGAN CITY & INDIANA HARBOR & GARY HARBOR

IN - LAKE MICHIGAN – Indiana Harbor Canal – Chart 14927

From November 2 through **November 17, 2024**, and again from December 7 through **December 21, 2024**, on each Saturday at 0001 through each Sunday at 2359, the Elgin, Joliet, and Eastern Railroad Bridge at Mile 0.68 over the Indiana Harbor Canal will be secured to masted navigation. Vessels able to pass under the bridge without an opening may do so at any time.

[52/23]

IN - LAKE MICHIGAN – Michigan City – Chart 14927

On **September 4, 2024**, between the hours of 0800 to 1600, inspectors will utilize snooper trucks under the Franklin Street Bridge at Mile 0.50 over Trail Creek. Spotters will warn of approaching vessel and move the manlift to allow vessels to pass under the bridge. A 20-minute advance notice of arrival is required for bridge openings to allow inspectors to clear equipment from the bridge.

[31/24]

IN - LAKE MICHIGAN – Indiana Harbor Canal – Chart 14927

On September 5 and **September 6, 2024**, between the hours of 0800 to 1600, inspectors will utilize snooper trucks under the Dickey Road Bridge at Mile 1.21 and the Indianapolis Boulevard Bridge over the Indiana Harbor Canal. Spotters will warn of approaching vessel and move the manlift to allow vessels to pass under the bridge. A 20-minute advance notice of arrival is required for bridge openings to allow inspectors to clear equipment from the bridge.

[31/24]

LAKE MICHIGAN – CALUMET RIVER & LITTLE CALUMET RIVER

*****REVISED*****

IL - LAKE MICHIGAN – Calumet Harbor – Chart 14927

From September 7, 2023, through **December 9, 2024**, scaffolding will be installed under the Indiana Avenue Bridge at Mile 10.80 (CORPS MILE 322.3) over the Little Calumet River that hangs approximately 1-foot below low steel.

[34/23] [19/24]

IL - LAKE MICHIGAN – Calumet Harbor – Chart 14927

The Coast Guard has received a report that the lights on the Norfolk Southern Railroad Bridge at Mile 12.49 over the Little Calumet River are extinguished.

[27/24]

IL - LAKE MICHIGAN – Calumet Harbor – Chart 14927

On **August 16, 2024**, between the hours of 0800 and 1700, divers will be inspecting the underwater portions of the Chicago Skyway Bridge at Mile 1.50 (CORPS MILE 331.7) over the Calumet River. Spotters will warn of approaching vessels and move the divers to allow vessels to pass. A 20-foot dive boat will monitor VHF-FM Marine Channel 16.

[33/24]

CHICAGO RIVER – MAIN RIVER CHANNEL, NORTH BRANCH, NORTH SHORE CHANNEL, AND SOUTH BRANCH AND SOUTH FORK OF SOUTH BRANCH

IL - LAKE MICHIGAN – Chicago Harbor – Chart 14927

From July 22 through **September 20, 2024**, between the hours of 0600 and 1800, Monday through Saturday a 30-foot Harcon will be inspecting the following groups of bridges in Chicago and Calumet Harbors:

95th Street Bridge at Mile 1.09 (CORPS MILE 332.1) to the Indiana Avenue Bridge at Mile 10.80 (CORPS MILE 322.3) over the Calumet and Little Calumet Rivers, the South Western Avenue Bridge at Mile 6.7 (CORPS MILE 320.6) and the South Cicero Avenue Bridge at Mile 10.0 (CORPS MILE 317.3) over the Chicago Sanitary and Ship Canal and All bridges over the Chicago River including all its branches.

[20/24]

CALUMET SAG CHANNEL

*****REVISED*****

IL - LAKE MICHIGAN – Calumet-SAG Channel – Chart 14927

From February 20, 2024, through **November 1, 2024**, scaffolding that hangs approximately 6-feet below low steel will be installed under one half of the 127th Street Bridge at Mile 18.81 (CORPS MILE 314.2) over the Calumet-SAG Channel. A 40-foot by 50-foot barge will be used at the bridge and will move if provided a 30-minute advance notice of arrival on VHF-FM marine Channel 16.

[03/24] [04/24] [10/24]

CHICAGO SANITARY AND SHIP CANAL, KANKAKEE RIVER & ROCK RIVER

(Lake Michigan to Mile 36.2/291.1)

*****REVISED*****

IL - LAKE MICHIGAN – Chicago Sanitary and Ship Canal – Chart 14927

From January 15, through **August 31, 2025**, scaffolding will be installed that hangs approximately 3-feet below low steel of the South-Central Avenue Bridge at mile 11.1 (CORPS MILE 316.2) over the Chicago Sanitary and Ship Canal.

[03/24] [23/24]

LAKE MICHIGAN – WEST

*****REVISED*****

WI - LAKE MICHIGAN – Milwaukee Harbor – Chart 14924

From March 25 through **November 27, 2024**, between the hours of 0700 and 1700, Monday through Friday, two barges 70-feet by 50-feet or smaller will be painting the Holton Street Bridge, mile 2.84, over the Milwaukee River. Containment will hang from low steel of the bridge to the barge deck. The barges will move to accommodate vessels if a 2-hour advance notice is provided by calling 262-366-5121.

[11/24] [31/24]

WI - LAKE MICHIGAN – Manitowoc Harbor – Chart 14922

From May 30, 2024, through **September 10, 2024**, The Eighth Street Bridge, mile 0.29 and the Tenth Street Bridge, mile 0.43, over the Manitowoc River at Manitowoc, Wisconsin shall open on signal, except that from 0700 to 0800 and 1100 to Noon. and again from 1600 to 1700 weekdays (except Federal Holidays), the bridges do not need to open for vessels. From 2200 to 0400 daily the bridges will open on signal if provided a 2-hour advance notice of arrival from vessels by calling 920-686-6910. The Eighth Street Bridge, mile 0.29 will be operated remotely by the Tenth Street Bridge Drawtender. During this test deviation comments will be received by emailing lee.d.soule@uscg.mil.

[22/24]

*****REVISED*****

WI - LAKE MICHIGAN – Milwaukee Harbor – Chart 14924

From July 22, 2024, through **October 31, 2024**, one bridge leaf of the Cherry Street Bridge at Mile 2.29 over the Milwaukee River will be secured to masted navigation while the other bridge leaf operates normally for the passage of vessels. From November 1, 2024, through April 1, 2025, both leaves will be secured to masted navigation. Vessels able to pass under the bridge without an opening may do so at any time. Between the hours of 0600 and 1700, Monday through Saturday, three barges, 60-foot by 80-foot or smaller will be working at the bridge, the barges will monitor VHF-FM Marine Channel 16 and move if a 3-hour advance notice is provided. Mariners may also provide advance notice by radio or by calling 312-735-1639.

[24/24] [29/24]

WI - LAKE MICHIGAN – Milwaukee Harbor – Chart 14924

From August 7 through **August 19, 2024**, contractors will utilize snooper trucks under the Becher Street Bridge at Mile 2.02 over the Kinnikinnic River. Spotters will warn of approaching vessels and move the manlift so vessels can pass. A platform that hangs approximately five feet below low steel will be suspended under the bridge.

[31/24]

LAKE MICHIGAN – Sturgeon Bay Ship Canal – Green Bay – Fox River – Wolf River

WI - LAKE MICHIGAN – Green Bay – Chart 14918

From December 1, 2026, through **March 31, 2027**, the Tilleman Memorial Bridge at mile 2.27 over the Fox River will be secured to masted navigation. Vessels able to pass under the bridge without an opening may do so at any time.

[49/23]

*****REVISED*****

WI - LAKE MICHIGAN – Fox River – Chart 14916

from October 8, 2026, through **April 8, 2027**, the Wisconsin Street Bridge at mile 56.72 over the Fox River will be secured to masted navigation and scaffolding that hangs approximately 4-feet will be installed under the bridge. Vessels able to pass under the bridge safely, without an opening may do so at any time.

[02/24] [03/24]

WI - LAKE MICHIGAN – Fox River – Chart 14918

From September 9, through **October 3, 2024**, between the hours of 0700 and 1700, every weekday, inspectors will be using Snooper vehicles under the Tower Drive / Leo Frigo Bridge at mile 0.41 over the Fox River. Spotters will warn of approaching vessels and move the manlift to allow vessels to pass.

[27/24]

WI - LAKE MICHIGAN – Fox River – Chart 14918

On **September 28, 2024**, between the hours of 0800 and 1000 the Racine Street Bridge at Mile 37.91 over the Fox River will be secured to masted navigation in conjunction with the 44th Annual Grunski Runski. Vessels able to pass under the bridge without an opening may do so at any time.

[29/24]

WI - LAKE MICHIGAN – Fox River – Chart 14916

from August 5th through **August 9, 2024**, between the hours of 0600 and 2100, daily, contractors will be drilling soil samples through the bridge deck of the Jackson Street Bridge at Mile 56.22 over the Fox River. This will not change the bridge operations. A safety boat will be available to assist mariners in passing the drill shaft safely.

[29/24]

WI - LAKE MICHIGAN – Sturgeon Bay Ship Canal – Chart 14919

From October 14 through **October 31, 2024**, between the hours of 0700 and 1600, Monday through Thursday, the Michigan Street Bridge at Mile 4.3 over the Sturgeon Bay Ship Canal will be secured to masted navigation due to maintenance. Vessels able to pass under the bridge without an opening may do so at any time. There will be an opening at noon each day for vessels waiting at the bridge.

[32/24]

WI - LAKE MICHIGAN – Fox River – Chart 14916

On **August 18, 2024**, between the hours of 0630 and 0930 the Racine Street Bridge at Mile 37.91 over the Fox River will be secured to masted navigation in conjunction with the Race the Lake running event. Vessels able to pass under the bridge without an opening may do so at any time.

[34/24]

LAKE SUPERIOR

WI - LAKE SUPERIOR – Duluth-Superior Harbor – Chart 14975

From August 18 through **August 9, 2024**, between the hours of 0700 to 1700, Daily, Inspectors will use Unmanned Aerial Vehicles and snooper trucks under the Bong Bridge at mile 5.20 over the St. Louis Bay and River. Spotters will warn of approaching vessels and move the equipment to allow vessels to pass.

[19/24]

[RAINY LAKE, RAINY RIVER, LAKE OF THE WOODS, WISCONSIN RIVER, MISSISSIPPI RIVER, & RED RIVER OF THE NORTH](#)

(Revised 04/23) NINTH DISTRICT DRAWBRIDGE SIGNALS OR OPERATIONAL DELAYS FORM

TO: Commander (dpb)
Ninth Coast Guard District
1240 E. 9th Street – Room 2047b
Cleveland, Ohio 44199-2060
Phone: (216) 902-6087
Fax: (216) 902-6088
E-Mail: William.B.Stanifer@uscg.mil, Lee.D.Soule@uscg.mil, and Michael.O.Walker2@uscg.mil

DATE: _____
NOTE: Reports of Delay will be processed only when all items are fully addressed and reports submitted within 15 days of reported delay / difficulty. Attach additional sheets if necessary.

CONFIDENTIALITY: Please check here if you wish to keep names of vessels and persons confidential

1. DATE OF DELAY: _____ 2. VESSEL NAME: _____ 3. INBOUND OUTBOUND

(***NOTE: You must provide the following from Coast Pilot 6.***)

4. BRIDGE NAME _____ 5. WATERWAY _____

6. MILE MARKER _____

7. WHAT TIME DID YOU ARRIVE AT THE BRIDGE? _____ 8. DID YOU SIGNAL FOR AN OPENING AT THAT TIME? Y N

9. HOW DID YOU SIGNAL? Sound signal (Whistle, horn, megaphone, hailer, etc.) _____

(Check all that apply) Visual signal (Flag or Light) _____

Radio telephone (Specify Frequency) _____

10. WHEN DID THE BRIDGE REPLY? _____ 11. WHAT DID THE DRAWTENDER SAY? _____

12. DID YOU COMMUNICATE WITH THE BRIDGE AFTER YOUR ARRIVAL? PLEASE PROVIDE DETAILS INCLUDING TIMES, WHAT YOU SAID, AND WHAT THE BRIDGE SAID? _____

13. WHAT TIME DID THE BRIDGE OPEN? _____ 14. WHAT TIME DID YOU START THROUGH? _____

15. WHAT TIME DID YOU CLEAR? _____ 16. WHAT ACTIONS DID YOU TAKE WHILE YOU WAITED FOR THE BRIDGE TO OPEN (e.g. tie up, hold position, use thrusters, return to dock)? _____

17. DESCRIBE ANY WEATHER OR WATER CONDITIONS THAT AFFECTED MANUEVERABILITY WHILE YOU WAITED? _____

18. DESCRIBE WHETHER ANY PEDESTRIANS, VEHICLES, OR TRAINS WERE STOPPED ON THE BRIDGE OR CROSSING THE BRIDGE? PROVIDE AS MUCH DETAIL AS POSSIBLE. _____

19. PROVIDE ANY ADDITIONAL INFORMATION YOU THINK WOULD BE HELPFUL? _____

20. YOUR NAME, E-MAIL, PHONE NUMBER, AND ADDRESS: _____

SIGNATURE OF REPORTING SOURCE



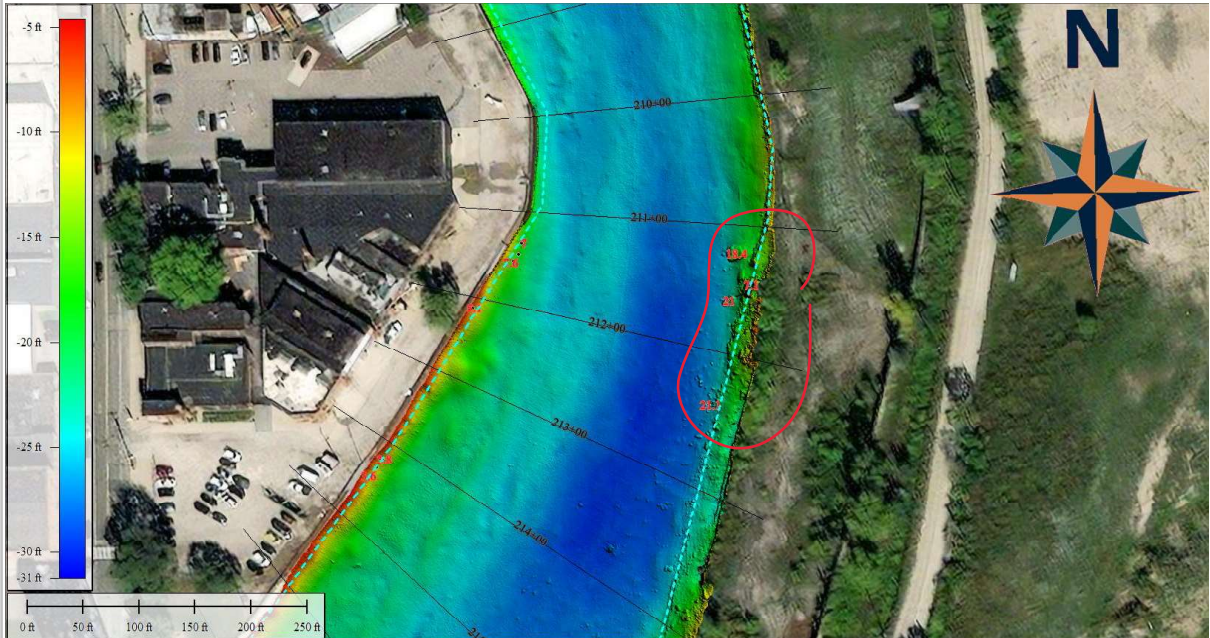
CHANNEL OBSTRUCTION REPORT

U.S. Army Corps of Engineers – Buffalo District

PROJECT NAME: Cuyahoga River
 DATE OBSERVED: 12/07/2023
 CREW: D. Banning, D. Bognar

OBJECT: Multiple unknown
 LATITUDE: 41° 29' 23.1785" N
 LONGITUDE: 81° 41' 54.1661" W

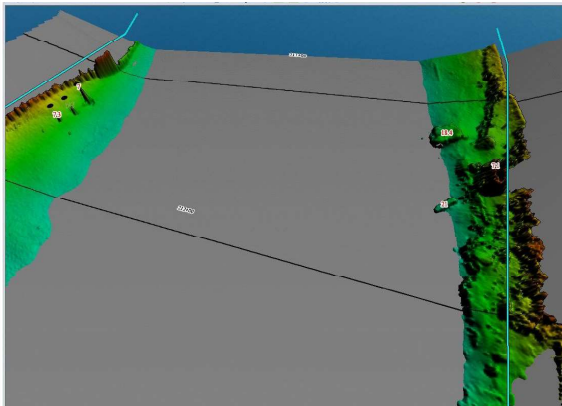
SURVEY DATA



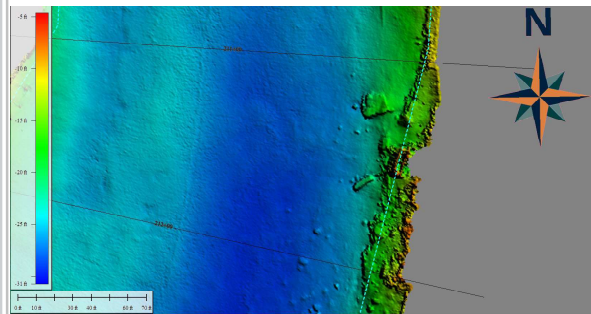
Multiple objects along easterly edge of Federal Channel between Sta. 211+00 & 213+00. Object Depths shown in red. Federal Channel shown in cyan.

View: NE down channel line

Hypack Channel View



3D view of channel bottom showing only areas that are shoaler than project depth of 23ft.



Close up view of area.

Waterway Analysis and Management System Survey

Name of Waterway: _____

User Information

___ Commercial User

___ Recreational User

Number of years in the maritime industry or number of years using this waterway: _____

Number of transits in the waterway per year: _____

Number of night transits of waterway: _____

Seasonal Dates: Start: _____ End: _____

Name of Vessel: _____

Vessel Description: _____

Length: _____ Beam: _____ Draft: _____ Gross Tons: _____

Net Tons: _____ Bridge Height of Eye: _____

Cargo Carried: _____

Navigational tools used: (ECDIS/ECPINS, GPS, DGPS, VISUAL, RADAR) _____

What area do you believe is the most dangerous or difficult to navigate: _____

Are the floating aids to navigation (lighted and unlighted buoys) adequate for this waterway:

Are the fixed aids to navigation (lights, ranges, lighthouses, daybeacons) adequate for this waterway: _____

Are the year round and lighted ice buoys adequate: _____

Are there buoys that you feel should be changed to fixed aids to navigation?

Are there any buoys that could be eliminated from this waterway: _____

Are there any buoys with sound signals that the bell or gong could be removed:

Are there any areas that require additional aids to navigation in this waterway:

Do the nautical charts, Coast Pilot, and Light List meet your needs for this waterway: _____

Are there private Aids to Navigation that you find misleading or interfere with the current system in the waterway:

Any addition comments on this waterway: _____

Thank you for taking time to comment on this waterway. Your input as a mariner very valuable to the U. S. Coast Guard in evaluating waterways to make them safe and as easily navigable as possible. Please feel free to contact D09-DG-District-D9-ATON-Support@uscg.mil with any other questions or concerns about any aids to navigation in the Great Lakes. The survey can be mailed to:

Commander (dpw-2)
Ninth Coast Guard District
1240 East Ninth Street
Cleveland, Ohio 44199
