



U.S. Department
of Homeland Security
**United States
Coast Guard**

LOCAL NOTICE TO MARINERS

District: 9

Week: 29/24

Issued by: Commander (dpw)
Ninth Coast Guard District
1240 East Ninth Street,
Cleveland, OH 44199-2060
Telephone: (571) 608-1683

Direct questions about this LNM to the above address.

All distances in this publication are STATUTE MILES unless otherwise noted.*

District Nine Internet Address <https://www.atlanticarea.uscg.mil/Our-Organization/District-9/>

District Nine Local Notice to Mariners email Address D09-DG-District-D9-LocalNoticetoMariners@uscg.mil

** Navigation Information Service watchstander, 24 hours a day at (703) 313-5900 ** **Internet Address** <https://www.navcen.uscg.gov/>

Light List Reference: Commandant Publication P16502.7, VOL VII, 2023 Edition

Coast Pilot Reference: 2024 U.S. Coast Pilot 6 Great Lakes 54th Edition

Coast Pilots, along with corrections are available at: <https://nauticalcharts.noaa.gov/publications/coast-pilot/index.html>

The Local Notice to Mariners is available on the Internet at <https://www.navcen.uscg.gov/local-notices-to-mariners-by-cg-district> You will also have links to other government agencies- web pages including the US Army Corps of Engineers and the National Ocean Service.

REPORT DISCREPANCIES IN AIDS TO NAVIGATION TO THE NEAREST COAST GUARD UNIT

The Ninth District and all Sector offices for their areas of responsibility issue a BROADCAST NOTICE TO MARINERS.

The following Broadcast Notice to Mariners have been incorporated into this week's Local Notice to Mariners:9

Sector Eastern Great Lakes - EGL127-24 through EGL129-24

Ninth District - C084-24 through C092-24

Sector Detroit, MI - D081-24 through D084-28

Sector Lake Michigan, WI - M226-24 through M252-24

Sector Northern Great Lakes- NGL073-24 through NGL073-24

The United States Coast Guard Navigation Information Service (NIS), operated by the USCG Navigation Center, is staffed 24 hours a day, 7 days a week. The NIS provides information on the current operational status, effective policies, and general information for GPS and DGPS. The

NIS also disseminates Safety Broadcasts (BNM), Local Notice to Mariners (LNM), and the latest Notice Advisory to Navstar Users (NANU). NANU notices can be obtained via email subscription through the USCG Navigation Center website: <https://cgls.uscg.mil/mailman/listinfo/nanu>. In addition,

the NIS investigates all reports of degradation or loss of GPS, DGPS or AIS service. Users are encouraged to report all degradation or loss of radio navigation services to the NIS via any of the following: Phone: (703) 313-5900, mail to: webmaster@smtp.navcen.uscg.mil, or on the internet at: <https://www.navcen.uscg.gov>

ABBREVIATIONS

A through H

ADRIFT - Buoy Adrift
AICW - Atlantic Intracoastal Waterway
AI - Alternating
B - Buoy
BKW - Breakwater
bl - Blast
BNM - Broadcast Notice to Mariner
bu - Blue
C - Canadian
CHAN - Channel
CGD - Coast Guard District
C/O - Cut Off
CONT - Contour
CRK - Creek
CONST - Construction
DAYMK/Daymk - Daymark
DBN/Dbn - Daybeacon
DBD/DAYBD - Dayboard
DEFAC - Defaced
DEST - Destroyed

I through O

I - Interrupted
ICW - Intracoastal Waterway
IMCH - Improper Characteristic
INL - Inlet
INOP - Not Operating
INT - Intensity
ISL - Islet
Iso - Isophase
kHz - Kilohertz
LAT - Latitude
LB - Lighted Buoy
LBB - Lighted Bell Buoy
LHB - Lighted Horn Buoy
LGB - Lighted Gong Buoy
LONG - Longitude
LNM - Local Notice to Mariners
LT - Light
LT CONT - Light Continuous
LTR - Letter
LWB - Lighted Whistle Buoy

P through Z

PRIV - Private Aid
Q - Quick
R - Red
RACON - Radar Transponder Beacon
Ra ref - Radar reflector
RBN - Radio Beacon
REBUILT - Aid Rebuilt
RECOVERED - Aid Recovered
RED - Red Buoy
REFL - Reflective
RRL - Range Rear Light
RELIGHTED - Aid Relit
RELOC - Relocated
RESET ON STATION - Aid Reset on Station
RFL - Range Front Light
RIV - River
RRASS - Remote Radio Activated Sound Signal
s - seconds
SEC - Section
SHL - Shoaling

DISCON - Discontinued
DMGD/DAMGD - Damaged
ec - eclipse
EST - Established Aid
ev - every
EVAL - Evaluation
EXT - Extinguished
F - Fixed
fl - flash
Fl - Flashing
G - Green
GIWW - Gulf Intracoastal Waterway
HAZ - Hazard to Navigation
HBR - Harbor
HOR - Horizontal Clearance
HT - Height

LWP - Left Watching Properly
MHz - Megahertz
MISS/MSNG - Missing
Mo - Morse Code
MRASS - Marine Radio Activated Sound Signal
MSLD - Misleading
N/C - Not Charted
NGA - National Geospatial-Intelligence Agency
NO/NUM - Number
NOS - National Ocean Service
NW - Notice Writer
OBSCU - Obscured
OBST - Obstruction
OBSTR - Obstruction
Oc - Occulting
ODAS - Anchored Oceanographic Data Buoy

si - silent
SIG - Signal
SND - Sound
SPM - Single Point Mooring Buoy
SS - Sound Signal
STA - Station
STRUCT - Structure
St M - Statute Mile
TEMP - Temporary Aid Change
TMK - Topmark
TRLB - Temporarily Replaced by Lighted Buoy
TRLT - Temporarily Replaced by Light
TRUB - Temporarily Replaced by Unlighted Buoy
USACE - Army Corps of Engineers
W - White
Y - Yellow

Additional Abbreviations Specific to this LNM Edition:

LIB - Lighted Ice Buoy

SECTION I - SPECIAL NOTICES

This section contains information of special concern to the Mariner.

Cancellation of NOAA Paper and Raster Nautical Charts

The National Oceanic and Atmospheric Administration (NOAA) is undertaking a multi-year program to end production and maintenance of its suite of over 1,000 traditional paper nautical charts and all associated raster chart products and services, including: Print-on-Demand (POD) paper nautical charts, Full-size chart PDF files, BookletChart™ PDF files, NOAA raster navigational charts (NOAA RNC®), the NOAA RNC tile service, and the online RNC viewer.

Six months notice of the intent to cancel a specific chart is provided in a "Last Edition" notice. The final cancellation of a chart is made in a "Canceled" notice. Both types of notices will appear in LNM Section IV, "Chart Correction." A comprehensive list of all canceled NOAA charts is available at: <http://www.charts.noaa.gov/MCD/Dole.shtml>.

Traditional paper nautical chart production is ending to enable the creation and maintenance of larger scale, more up-to-date, higher quality coverage of NOAA's electronic navigational chart (NOAA ENC®) product. This will significantly enhance the amount of charted detail available to mariners. More information about NOAA's program to sunset traditional paper charts is on the NOAA Coast Survey website at: <https://nauticalcharts.noaa.gov/charts/farewell-to-traditional-nautical-charts.html>

An online NOAA Custom Chart application at: <https://devgis.charttools.noaa.gov/pod> is available to create chart images from ENC data, which may then be printed. Notices to Mariners will not be issued for NOAA Custom Charts.

LNM: 04/20

SAFETY NOTICE - NAVIGATIONAL RANGE AND SECTOR LIGHTS ON ELECTRONIC CHARTS

The U.S. Coast Guard has become aware that the Range and Sector Light Characteristic labels are not displayed on Electronic Navigational Charts (ENCs) when used in an Electronic Chart Display and Information System (ECDIS) due to limitations of the S-52 ECDIS display specification. Mariners may query the ENC data directly within ECDIS or refer to the Light List for complete information on Range and Sector Light Characteristics.

LNM: 39/22

PUBLICATION OF NVIC 03-23 GUIDANCE ON NAVIGATIONAL SAFETY IN AND AROUND OFFSHORE RENEWABLE ENERGY INSTALLATIONS (OREI)

The Coast Guard has published Navigation and Vessel Inspection Circular (NVIC) 03-23: Guidance on Navigational Safety In and Around Offshore Renewable Energy Installations (OREI) to highlight considerations when planning and undertaking voyages in the vicinity of offshore renewable energy installations (OREI) in U.S. waters. The prudent mariner should review and utilize this NVIC to make an informed risk assessment prior to navigating within or in the vicinity of an OREI. Important Maritime Safety Information (MSI) relating to OREIs is distributed by Local or Broadcast Notices to Mariners (LNM or BNM) promulgated by Coast Guard Districts. Marine Safety Information Bulletins (MSIB) released by the local Captain of the Port (COTP) may be issued to provide supplemental information. Interested parties should contact the Office of Navigation Systems at CGNAV@uscg.mil with any questions or feedback.

LNM: 47/23

MERCHANT MARINER CREDENTIAL

The U.S. Coast Guard announced a new merchant mariner credential (MMC) set to launch on March 1, 2024. This milestone marks the first comprehensive revision of the mariner credential in nearly a decade and is strategically designed to enhance both quality of service and security within the Marine Transportation System (MTS). U.S. Coast Guard Marine Safety Information Bulletin (MSIB) 01-24, New Merchant Mariner Credential Passport Booklet Replacement, has been posted on the DCO's MSIB Site and announced at the National Maritime Center (CG-NMC)

Home Page (uscg.mil). Please visit these resources for more information on the credential.

LNM: 09/24

2024 Light List

2024 Light Lists are available on the USCG Navigation Center's website at:
<https://www.navcen.uscg.gov/light-list-annual-publication>

Coast Guard Light Lists are a means for communicating aids to navigation information to the maritime public. The last government printed Light Lists were the 2024 editions.

While the Light Lists will no longer be available in government printed form, commercial reproductions may be available for purchase from maritime service providers.

Local Notice to Mariners will continue to advise Light List corrections and NAVCEN will continue to publish a compilation of corrections.

Complete versions of the 2024 Light Lists are updated weekly on the NAVCEN website and mariners should download applicable copies and updates as needed at: <https://www.navcen.uscg.gov/weekly-light-lists>

A summary of 2024 Light List corrections are available at: <https://www.navcen.uscg.gov/light-list-summary-of-corrections>

Guidance for use of electronic navigation publications onboard U.S. vessels can be found at:
http://www.uscg.mil/hq/cgcv/cvc/policy/policy_letters/543/CG-543_pol10-05.pdf

If the links above do not work, you should either copy and paste the links into your web browser or follow the LNM links from the Navigation Center LNM page at <https://www.navcen.uscg.gov/local-notice-to-mariners-by-cg-district>.

The Local Notice to Mariners, Light List, and Summary of Corrections are in Portable Document Format (PDF) and viewing them requires a PDF reader. PDF readers are readily available on the internet, generally free of charge.

If you have questions regarding this message, please contact the Navigation Center at <https://www.navcen.uscg.gov/report-a-problem> (use "LNMs, Charts, Chart Corrections, or Light Lists" as the subject from the pull down menu).

LNM: 03/24

U.S. Coast Pilot 6-NEW EDITION

PUBLICATION—National Oceanic Administration (NOAA)— U.S. Coast Pilot 6, Great Lakes and their connecting waterways, 54th Edition, 2024, has been issued and is ready for free download and weekly updates at <https://nauticalcharts.noaa.gov/publications/coast-pilot/index.html>.

Only Print-on-Demand (POD) bound copies are available for purchase; visit nauticalcharts.noaa.gov/publications/print-agents.html#coast-pilot. The 2024 Edition cancels the preceding 2023 Edition, and incorporates all previous corrections.

LNM: 16/24

USACE NOTICE TO NAVIGATION INTERESTS

Current Federal Channel conditions, shoaling, and the most recent channel surveys are available at the following Army Corps of Engineers web sites:

Buffalo: <http://www.lrb.usace.army.mil/>
Detroit: <http://www.lre.usace.army.mil/>
Chicago: <http://www.lrc.usace.army.mil/>
Rock Island: <http://www.mvr.usace.army.mil/>
St. Paul: <https://www.mvp.usace.army.mil/>

LNM: 28/12

GREAT LAKES - Great Lakes Water Levels

See Enclosure 1

The current and four week expected water level table for the Great Lakes, Connecting Channels and the St. Lawrence River, will be published in Enclosure 1 following SECTION VIII - LIGHT LIST CORRECTIONS of the Local Notice to Mariner or by visiting the link below:

<https://www.lre.usace.army.mil/Missions/Great-Lakes-Information/Great-Lakes-Water-Levels/Water-Level-Forecast/Connecting-Channels-Forecast/>

LNM: 32/20

LAKE ERIE – Fairport Harbor – Chart 14829

The Coast Guard has established a virtual AIS aid to navigation at the entrance of Fairport Harbor to assist in identifying recent shoaling within the channel. The aid (MMSI: 993682815) is labeled W SHOAL 2 and identifies the encroachment of shoaling on the western side of the channel less than 18.5ft water depth. The aid is for reference only and is positioned based on most recent survey data, and does not account for periodic variations in the position of the shoal. Mariners are urged to use caution while transiting the area.

LNM: 21/23

LAKE ST. CLAIR - St. Clair Cut-off LB "CO" LLNR 8590

The Coast Guard will be temporarily deploying a buoy of reduced size at St. Clair Cut-Off Preferred Channel Lighted Buoy "CO" (LLNR 8590) in Lake St. Clair, MI. The visual and operational radar range of the buoy will be reduced. The lighted signal range will remain unchanged. The temporary change is in response to delays in the permanent buoy's off-season refurbishment. Upon completion, the permanent buoy will be redeployed back on station. All mariners are requested to use caution while transiting the area.

LNM: 15/24

LAKE HURON - Harrisville to Forty Mile Point

The Office of the Under Secretary of Defense for Research and Experimentation via Naval Surface Warfare Center, Crane Division will conduct Experimentation Event Silent Storm '24 from 15-26 July 2024. The event will encompass an area that includes Thunder Bay, Thunder Bay Island, Middle Island, and Rockport, MI. The area is bounded northerly by 45-13-00.000N, southerly by 44-59-00.000N, and easterly by 083-09-00.000W. During this event mariners can expect many small Unmanned Surface, Sub-surface, and Air Vehicles in operation. All unmanned platforms will have manned vessels in the vicinity for control and safety. Questions can be directed to Rob Gamberg, phone: 812-381-4957, email: robert.d.gamberg.civ@us.navy.mil.

LNM: 29/24

ST. MARYS RIVER - American Canal - Chart 14884

Northeast Pierhead Light (LLNR 14205) The U. S. Army Corps of Engineers will be relocating this light to the top of their new camera tower. As soon as the position and height of the light's new location is confirmed it will be advertised in Section VIII - Light List Corrections of the LNM.

LNM: 10/21

LAKE MICHIGAN - Seul Choix Point

The Coast Guard has received a report of soundings less than charted depth 3.5NM east/southeast of Seul Choix Point at position 45°53'18"N, 085°50'27"W. The area of reduced depth was reported on the east/west Manistique to Lansing Shoal recommended shipping route. Mariners are urged to use caution while transiting the area.

LNM: 06/24

LAKE MICHIGAN - Algoma

Algoma Light 1 (LLNR 20980) will be temporarily disestablished for marine construction operations on the south breakwater in Algoma, WI. A temporary flashing white light will be installed each night on the end of the breakwater to assist mariners in identifying the construction area. The permanent aid's anticipated reinstatement date is July 15th, 2024. Mariners are urged to use caution while transiting the area.

LNM: 26/24

LAKE SUPERIOR - Isle Royale

The Coast Guard has received a report of a partially submerged spar buoy at position 48°05'49"N, 088°44'12"W, on the north shore of Isle Royale just west of Hawk Island. Mariners are urged to use caution while transiting this area.

LNM: 25-24

LAKE SUPERIOR – Keweenaw – Chart 14972

Keweenaw Upper Entrance West Breakwater Light (LLNR 15115) was reported damaged and swept from its location on the breakwall. The approximately 20' metal tower is submerged in vicinity of the breakwater at an unknown position. All mariners are urged to use caution when transiting the area.

LNM: 12/23

SECTION II - DISCREPANCIES

This section lists all reported and corrected discrepancies related to Aids to Navigation in this edition. A discrepancy is a change in the status of an aid to navigation that differs from what is published or charted.

DISCREPANCIES (FEDERAL AIDS)

| LLNR | Aid Name | Status | Chart No. | BNM Ref. | LNM St | LNM End |
|-------------|--------------------------------------|----------------------|-----------|-----------|--------------|---------|
| 3595 | Erie Harbor Lighted Buoy 13 | LT EXT | | | 29/24 | |
| 8410 | Peché Island Range Rear Light | DAYMK MISSING | | | 29/24 | |
| 10035 | Lake Huron Cut Lighted Buoy 1 | OFF STA | | D041-24 | 23/24 | |
| 12155 | Crooked Lake Daybeacon 84 | DAYMK MISSING | | NGL070-24 | 28/24 | |

| | | | | | |
|--------------|--|------------------|--------------|----------------|--------------|
| 12907 | Lime Island Lighted Buoy 14 | LT EXT | | | 28/24 |
| 13030 | Munuscong Channel (Upbound) Junction Light ML | AIS INOP | | | 21/24 |
| 13070 | Munuscong Channel (Upbound) Lighted Buoy 9 | AIS INOP | | | 05/24 |
| 13125 | Sailors Encampment Channel Lighted Buoy 21 | AIS INOP | | | 05/24 |
| 13280 | Middle Neebish South Range Rear Light | DAYMK MISSING | | NGL068-24 | 28/24 |
| 13475 | West Neebish Channel (Downbound) Upper Range Rear Light | DAYMK MISSING | | | 36/23 |
| 13645 | Sawmill Point Lighted Buoy 22 | AIS INOP | | | 05/24 |
| 13695 | Moon Island Lighted Buoy 13 | AIS INOP | | | 05/24 |
| 13955 | Upper Nicolet Range Front Light | DAYMK MISSING | | | 21/24 |
| 13960 | Upper Nicolet Range Rear Light | DAYMK MISSING | | NGL004-24 | 26/23 |
| 14050 | Six Mile Point Range Rear Light | DAYMK MISSING | | S079-23 | 10/21 |
| 14335 | Pointe Aux Pins Channel Lighted Buoy 8 | LT EXT | | NGL061-24 | 27/24 |
| 14880 | Keweenaw Waterway Light 25 | STRUCT DEST/TRLB | | NGL047-24 | 19/24 |
| 15115 | Keweenaw Upper Entrance West Breakwater Light | STRUCT DEST | | S015-23 | 02/23 |
| 15545 | Red Cliff Point Lighted Buoy 4 | LT EXT | | NGL064-24 | 27/24 |
| 15840 | Duluth Harbor Breakwater Isolated Danger Buoy | MISSING | | | 29/24 |
| 17210 | Canoe Channel Daybeacon 8 | STRUCT DEST/TRUB | | | 23/22 |
| 18530 | Ludington North Breakwater Light | SS INOP | 14901 | M223-24 | 28/24 |
| 18965 | Grand Haven South Pierhead Entrance Light | SS INOP | 14901 | M227-24 | 29/24 |
| 22185 | Green Bay Harbor Entrance Channel Range Rear Light | DAYMK MISSING | | M157-23 | 44/20 |

DISCREPANCIES (FEDERAL AIDS) CORRECTED

| LLNR | Aid Name | Status | Chart No. | BNM Ref. | LNM St | LNM End |
|-------|--------------------------------------|-------------------|-----------|----------|--------|---------|
| 1210 | Chippewa Point Directional Light | WATCHING PROPERLY | | | 28/24 | 29/24 |
| 1500 | St. Lawrence Seaway Lighted Buoy 218 | WATCHING PROPERLY | | | 28/24 | 29/24 |
| 1550 | St. Lawrence Seaway Light 226 | WATCHING PROPERLY | | | 28/24 | 29/24 |
| 3803 | Ashtabula Buoy 7 | WATCHING PROPERLY | | | 28/24 | 29/24 |
| 19505 | South Haven South Pierhead Light | WATCHING PROPERLY | 14901 | | 29/24 | 29/24 |

DISCREPANCIES (PRIVATE AIDS)

| LLNR | Aid Name | Status | Chart No. | BNM Ref. | LNM St | LNM End |
|-------------|--|---------------|-----------|----------------|--------------|---------|
| 4030 | Cleveland Waterworks Intake Crib Light | LT EXT | | EGL088-24 | 25/24 | |
| 4256 | Cashelmarra Jetty Light | LT IMCH | | | 24/24 | |
| 4780 | Cedar Point Marina South Basin Light 2 | LT EXT | | D083-24 | 29/24 | |
| 4960 | Sandusky Yacht Club Light 1 | LT EXT | | D026-24 | 18/24 | |
| 4965 | Sandusky Yacht Club Light 2 | LT EXT | | D027-24 | 18/24 | |
| 6025 | Toledo Water Works Intake Crib Lights | LT EXT | | D034-24 | 20/24 | |
| 8892 | ACOE LKSTC Water Sensor Buoy 1 | MISSING | | D059-24 | 26/24 | |
| 19860 | Filtration Plant Breakwater South End Light | LT EXT | | | 23/24 | |
| 19865 | Filtration Plant Breakwater North End Light | LT EXT | | | 23/24 | |
| 19931 | Thirty-First Street Jetty Danger Lighted Buoy A | MISSING | | | 23/24 | |
| 19932 | Thirty-First Street Jetty Danger Lighted Buoy B | MISSING | | | 23/24 | |
| 19933 | Thirty-First Street Jetty Danger Lighted Buoy C | MISSING | | | 23/24 | |

| | | | | |
|-------|---|---------|---------|-------|
| 19934 | Thirty-First Street Inner Jetty Light | LT EXT | | 23/24 |
| 20470 | Racine Launch Basin Entrance Light | LT EXT | | 22/24 |
| 20490 | Racine East Harbor Entrance Light 2 | LT EXT | | 28/24 |
| 20545 | Racine Harbor Light 13 | LT EXT | | 22/24 |
| 20681 | Lakeshore State Park Entrance Lt 1 | LT EXT | M116-24 | 21/24 |
| 20700 | Milwaukee City South Pier No. 2 South Light | LT EXT | M165-24 | 24/24 |
| 20729 | South Shore Park Entrance Lighted Buoy 1 | MISSING | | 21/24 |
| 20730 | South Shore Park Entrance Lighted Buoy 2 | MISSING | | 21/24 |
| 21405 | Shipyard Island Marina North Dock Light | LT IMCH | M199-24 | 27/24 |

DISCREPANCIES (PRIVATE AIDS) CORRECTED

| LLNR | Aid Name | Status | Chart No. | BNM Ref. | LNM St | LNM End |
|---------|------------------------------|-------------------|-----------|----------|--------|---------|
| 5310 | East Harbor Entrance Light 2 | WATCHING PROPERLY | | | 27/24 | 29/24 |
| 11388.1 | East Alpena Channel Buoy 2 | WATCHING PROPERLY | | | 17/24 | 29/24 |

PLATFORM DISCREPANCIES

| Name | Status | Position | BNM Ref. | LNM St | LNM End |
|------|--------|----------|----------|--------|---------|
|------|--------|----------|----------|--------|---------|

None

PLATFORM DISCREPANCIES CORRECTED

| Name | Status | Position | BNM Ref. | LNM St | LNM End |
|------|--------|----------|----------|--------|---------|
|------|--------|----------|----------|--------|---------|

None

SECTION III - TEMPORARY CHANGES and TEMPORARY CHANGES CORRECTED

This section contains temporary changes and corrections to Aids to Navigation for this edition. When charted aids are temporarily relocated for dredging, testing, evaluation, or marking an obstruction, a temporary correction shall be listed in Section IV giving the new position.

TEMPORARY CHANGES

| LLNR | Aid Name | Status | Chart No. | BNM Ref. | LNM St | LNM End |
|-------|--|---------------------------|-----------|----------|--------|---------|
| 2105 | Oswego Harbor West Channel Light 2 | TRLB | 14786 | | 17/19 | |
| 2855 | Black Rock Canal Light 15 | DISCONTINUED | | | 12/24 | |
| 8240 | William Livingstone Memorial Light | Reduced Intensity | | | 33/21 | |
| 9690 | Grande Pointe Light 23 | TRLT | | | 47/20 | |
| 14540 | Little Lake Harbor Light 2 | DISCONTINUED FOR DREDGING | | | 47/22 | |
| 15220 | Ontonagon Harbor East Breakwater Light | DISCONTINUED | | | 02/22 | |
| 16963 | Driftwood Point Light | DISCONTINUED | | | 45/20 | |
| 20980 | Algoma Light 1 | DISCONTINUED | | | 25/24 | |

TEMPORARY CHANGES CORRECTED

| LLNR | Aid Name | Status | Chart No. | BNM Ref. | LNM St | LNM End |
|------|----------|--------|-----------|----------|--------|---------|
|------|----------|--------|-----------|----------|--------|---------|

None

PLATFORM TEMPORARY CHANGES

| Name | Status | Position | BNM Ref. | LNM St | LNM End |
|------|--------|----------|----------|--------|---------|
|------|--------|----------|----------|--------|---------|

None

PLATFORM TEMPORARY CHANGES CORRECTED

| Name | Status | Position | BNM Ref. | LNM St | LNM End |
|------|--------|----------|----------|--------|---------|
| None | | | | | |

SECTION IV - CHART CORRECTIONS

This section contains corrections to federally and privately maintained Aids to Navigation, as well as NOS corrections.

This section contains corrective actions affecting chart(s). Corrections appear numerically by chart number, and pertain to that chart only. It is up to the mariner to decide which chart(s) are to be corrected. The following example explains individual elements of a typical chart correction.

| Chart Number | Chart Edition | Edition Date | Last Local Notice to Mariners | Horizontal Datum Reference | Source of Correction | Current Local Notice to Mariners |
|--|------------------------------|-----------------------------|-------------------------------|----------------------------|----------------------|----------------------------------|
| 12327 | 91st Ed. | 19-APR-97 | Last LNM: 26/97 | NAD 83 | | 27/97 |
| Chart Title: NY-NJ-NEW YORK HARBOR - RARITAN RIVER | | | | | | |
| Main Panel 2245 NEW YORK HARBOR | | | | | CGD01 | |
| (Temp) ADD | NATIONAL DOCK CHANNEL BUOY 3 | | | | at 40-41-09.001N | 074-02-48.001W |
| Corrective Action | Green can | Object of Corrective Action | | Position | | |

(Temp) indicates that the chart correction action is temporary in nature. Courses and bearings are given in degrees clockwise from 000 true. Bearings of light sectors are toward the light from seaward. The nominal range of lights is expressed in nautical miles (NM) unless otherwise noted.

14786 **15th Ed.** **01-SEP-18** **Last LNM: 40/17** **NAD 83** **29/24**

Chart Title: **SMALL-CRAFT BOOK CHART New York State Canal System (book of 61 Charts)**

Main Panel **1100 OSWEGO RIVER - MINETTO** --. Page/Side: -

LAST EDITION No new editions of chart 14786 will be published. It will be canceled on 04-Dec-24. Comparable or larger scale Electronic Navigational Chart (ENC) coverage is available. See "Cancellation of NOAA Paper and Raster Nautical Charts" in Section I of this LNM for details. A list of all canceled NOAA charts is at <https://www.charts.noaa.gov/MCD/Dole.shtml>.

NOS
--

14800 **10th Ed.** **01-SEP-05** **Last LNM: 33/13** **NAD 83** **29/24**

Chart Title: **Lake Ontario (Metric)**

Main Panel **1112 LAKE ONTARIO**. Page/Side: N/A

LAST EDITION No new editions of chart 14800 will be published. It will be canceled on 30-Oct-24. Comparable or larger scale Electronic Navigational Chart (ENC) coverage is available. See "Cancellation of NOAA Paper and Raster Nautical Charts" in Section I of this LNM for details. A list of all canceled NOAA charts is at <https://www.charts.noaa.gov/MCD/Dole.shtml>.

NOS
--

14820 **22nd Ed.** **01-MAY-20** **Last LNM: 48/19** **NAD 83** **29/24**

Chart Title: **Lake Erie**

Main Panel **1134 LAKE ERIE** --. Page/Side: -

LAST EDITION No new editions of chart 14820 will be published. It will be canceled on 30-Oct-24. Comparable or larger scale Electronic Navigational Chart (ENC) coverage is available. See "Cancellation of NOAA Paper and Raster Nautical Charts" in Section I of this LNM for details. A list of all canceled NOAA charts is at <https://www.charts.noaa.gov/MCD/Dole.shtml>.

NOS
--

14860 **37th Ed.** **01-MAY-16** **Last LNM: 19/22** **NAD 83** **29/24**

Chart Title: **Lake Huron**

Main Panel **1312 LAKE HURON**. Page/Side: A

LAST EDITION No new editions of chart 14860 will be published. It will be canceled on 30-Oct-24. Comparable or larger scale Electronic Navigational Chart (ENC) coverage is available. See "Cancellation of NOAA Paper and Raster Nautical Charts" in Section I of this LNM for details. A list of all canceled NOAA charts is at <https://www.charts.noaa.gov/MCD/Dole.shtml>.

NOS
--

14901 **18th Ed.** **01-AUG-20** **Last LNM: 19/22** **NAD 83** **29/24**

Chart Title: **Lake Michigan (Mercator Projection)**

Main Panel **1361 LAKE MICHIGAN** --. Page/Side: -

LAST EDITION No new editions of chart 14901 will be published. It will be canceled on

NOS
--

30-Oct-24. Comparable or larger scale Electronic Navigational Chart (ENC) coverage is available. See "Cancellation of NOAA Paper and Raster Nautical Charts" in Section I of this LNM for details. A list of all canceled NOAA charts is at <https://www.charts.noaa.gov/MCD/Dole.shtml>.

14902 **32nd Ed.** **01-NOV-20** **Last LNM: 19/22** **NAD 83** **29/24**

ChartTitle: **North end of Lake Michigan, including Green Bay**

Main Panel 1362 NORTH END OF LAKE MICHIGAN INCLUDING GREEN BAY - -. Page/Side: -

LAST EDITION No new editions of chart 14902 will be published. It will be canceled on 30-Oct-24. Comparable or larger scale Electronic Navigational Chart (ENC) coverage is available. See "Cancellation of NOAA Paper and Raster Nautical Charts" in Section I of this LNM for details. A list of all canceled NOAA charts is at <https://www.charts.noaa.gov/MCD/Dole.shtml>. NOS
--

14961 **13th Ed.** **01-FEB-16** **Last LNM: 36/19** **NAD 83** **29/24**

ChartTitle: **Lake Superior (Mercator Projection)**

Main Panel 1499 LAKE SUPERIOR. Page/Side: A

LAST EDITION No new editions of chart 14961 will be published. It will be canceled on 30-Oct-24. Comparable or larger scale Electronic Navigational Chart (ENC) coverage is available. See "Cancellation of NOAA Paper and Raster Nautical Charts" in Section I of this LNM for details. A list of all canceled NOAA charts is at <https://www.charts.noaa.gov/MCD/Dole.shtml>. NOS
--

OIL RIG MOVEMENT

Drill Rigs/Vessels Removed

| <u>Latitude</u> | <u>Longitude</u> | <u>Block</u> | <u>Rigs/Vessel</u> | <u>Chart</u> | <u>Type</u> | <u>Status</u> |
|-----------------|------------------|--------------|--------------------|--------------|-------------|---------------|
| None | | | | | | |

Drill Rigs/Vessels Established

| <u>Latitude</u> | <u>Longitude</u> | <u>Block</u> | <u>Rigs/Vessel</u> | <u>Chart</u> | <u>Type</u> | <u>Status</u> |
|-----------------|------------------|--------------|--------------------|--------------|-------------|---------------|
| None | | | | | | |

SECTION V - ADVANCE NOTICES

This section contains advance notice of approved projects, changes to aids to navigation, or upcoming temporary changes such as dredging, etc. Mariners are advised to use caution while transiting these areas.

SUMMARY OF ADVANCED APPROVED PROJECTS

| <u>Approved Project(s)</u> | <u>Project Date</u> | <u>Ref. LNM</u> |
|----------------------------|---------------------|-----------------|
| None | | |

Advance Notice(s)

LAKE ERIE - Black Rock Canal - Buffalo NY

The Coast Guard is permanently disestablishing Black Rock Canal Light 15 (LLNR 2855) in Buffalo, NY. The light is currently not operational.
LNM: 11/24

LAKE ERIE - Willis Crib - Erie PA

The Coast Guard is permanently disestablishing Willis Crib Isolated Danger Buoy "DW" (LLNR 3492) in Erie, PA. The operation of Willis Crib Dock Light (LLNR 3490) will not change.
LNM: 11/24

LAKE ERIE - Detroit - CHART 14854

The Coast Guard will be changing the operation of the sound signal on Detroit River Light (LLNR 6885) from operating continuously, to Mariner Radio Activated Sound Signal (MRASS) year-round. The sound signal would be activated by keying the microphone five or more times on VHF FM channel 83A / 157.175MHz.
LNM: 50/23

LAKE ERIE - Sandusky Channel

The Coast Guard will be changing the operation of Sandusky Straight Channel Buoy 15 (LLNR 4665) from a permanent unlighted buoy to a seasonally lighted buoy. The buoy will be lighted from Apr 14th to Dec 7th annually, and will display a Fl G 2.5s characteristic.
LNM: 19/24

LAKE MICHIGAN - Frankfort Harbor

The Coast Guard will be establishing the following floating aids to navigation in the inner harbor of Frankfort, MI.

- Frankfort Harbor Buoy 1 (LLNR 18396), 44-37-47.477N, 086-14.28.844W

- Frankfort Harbor Buoy 2 (LLNR 18397), 44-37-44.991N, 086-14.28.777W

- Frankfort Harbor Buoy 3 (LLNR 18398), 44-37-48.323N, 086-14-24.383W

- Frankfort Harbor Buoy 4 (LLNR 18399), 44-37-45.055N, 086-14-24.677W

The lateral buoys will serve as gated pairs to assist mariners in navigating the inner harbor during periods of increased seasonal vessel traffic. The buoys will be seasonal in operation and will be deployed from the 14 of May to the 14 of October annually. Mariners are urged to utilize the channel for transiting and avoid anchoring or obstructing the navigational channel.

LNM: 15/24

SECTION VI - PROPOSED CHANGES

Periodically, the Coast Guard evaluates its system of aids to navigation to determine whether the conditions for which the aids to navigation were established have changed. When changes occur, the feasibility of improving, relocating, replacing, or discontinuing aids are considered. This section contains notice(s) of non-approved, proposed projects open for comment. SPECIAL NOTE: Mariners are requested to respond in writing to the District office unless otherwise noted (see banner page for address).

PROPOSED WATERWAY PROJECTS OPEN FOR PUBLIC COMMENT

| <u>Proposed Project(s)</u> | <u>Closing</u> | <u>Docket No.</u> | <u>Ref. LNM</u> |
|----------------------------|----------------|-------------------|-----------------|
| None | | | |

Proposed Change Notice(s)

ST. MARYS RIVER - Lime Island

The Coast Guard is evaluating the reestablishment of the physical Lime Island Traffic Lighted Buoy (LLNR 12915) in the St. Marys River, MI. The physical aid was previously replaced by a V-AIS buoy. The lighted buoy would be seasonal in operation and not replaced by a winter mark. Mariners are encouraged to provide feedback to the Ninth District Aids to Navigation Office regarding the possible redeployment of the lighted buoy, as well as the function of the current V-AIS buoy.

LNM: 14/24

LAKE SUPERIOR – Duluth Harbor

The Coast Guard is evaluating the reestablishment of the physical Duluth Harbor Basin Traffic Lighted Buoy (LLNR 15870) in Duluth Harbor, MN. The physical aid was previously replaced by a V-AIS buoy. The lighted buoy would be seasonal in operation and not replaced by a winter mark. Mariners are encouraged to provide feedback to the Ninth District Aids to Navigation Office regarding the possible redeployment of the lighted buoy, as well as the function of the current V-AIS buoy.

LNM: 14/24

For any comments or questions on these proposed changes please contact:

The Ninth District Aids to Navigation manager at Brian.D.Hawkins2@uscg.mil or call (206) 815-0913.

LNM: 30/13

SECTION VII - GENERAL

This section contains information of general concern to the Mariners. Mariners are advised to use caution while transiting these areas.

Waterways Analysis and Management System

The Ninth Coast Guard District will be reviewing the following waterways throughout the Great Lakes Region. The study focuses primarily on aids to navigation in the waterway. Public comments are an important tool in this process so that we can provide the adequate markings and the right mix of signals to a waterway for safe navigation. Comments on the below listed waterways can be sent to Brian.D.Hawkins2@uscg.mil or by calling (206) 815-0913. You may also complete the survey attached to the Local Notice to Mariner and either email it or mail it to: Commander (dpw), Ninth Coast Guard District, 1240 East Ninth St., Cleveland, Ohio 44199.

The following waterways will be evaluated for the duration of calendar year 2024 and will be accepting comment until 31Dec2024:

- Sackets Harbor (LLNR 1755-2024.9)
- Buffalo Harbor/Black Rock Canal (LLNR 2665-3360)
- Dunkirk Harbor (LLNR 3365-3492)
- Erie Harbor (LLNR 3495-3696)
- Conneaut Harbor (LLNR 3700-3735)
- Ashtabula Harbor (LLNR 3740-3830)
- Fairport Harbor (LLNR 3835-3955)

LNM: 11/24

GREAT LAKES - Marine Events

Marine events such as races, parades, regattas, and fireworks displays are frequently held in the Great Lakes region. Advance information on specific events is contained in enclosure (2) of this publication. The public is reminded to listen to the local broadcast notice to mariners for the most up-to-date information on a marine event. Mariners are advised that some events may require temporary aids to navigation that are not displayed on a chart or in the Light List, and that they should exercise additional caution while operating in the vicinity of a scheduled marine event.

LNM: 24/13

LAKE ONTARIO – Little Sodus Bay – Chart 14800

There is an uncharted breakwall along the shore extending from the west side of Little Sodus Bay entrance to the boat ramp of West Barrier Bar County Park. The breakwall is unmarked and unlit. Visibility of the breakwall may be impacted due to high water. All mariners are requested to transit the area with caution.

LNM: 19/23

LAKE ONTARIO - Crescent Beach Breakwater

A series of breakwater barriers are being constructed in Lake Ontario near Crescent Beach, to the east of Sodus Point, NY. Work will be conducted from 01 April 2024, to 30 November 2024 between the hours of 0500 to 2000. Hours are dependent on weather conditions. Construction vessels can be hailed on VHF Channel 16. Inquiries related to the project can be directed to Mr. Glenn Roet at (315) 575-6091. All mariners are advised to stay clear of workboats, barges, floating or submerged equipment in the operational work area between floating navigation buoys detailed below and the shoreline.

- 1 N43°16'21.77817" W76°57'52.20335"
- 2 N43°16'20.93870" W76°57'46.38712"
- 3 N43°16'20.17974" W76°57'41.15137"
- 4 N43°16'19.26083" W76°57'36.11887"
- 5 N43°16'17.99008" W76°57'30.33037"
- 6 N43°16'16.95743" W76°57'25.59050"
- 11 N43°16'26.91154" W76°56'44.64137"
- 12 N43°16'29.34557" W76°56'39.60362"
- 13 N43°16'31.87966" W76°56'34.99165"
- 14 N43°16'33.90231" W76°56'31.32131"

LNM: 14/24

LAKE ERIE – Erie Harbor

From 1 June 2024 to 15 July 2024 Ryba Marine Construction Co will be conducting dredging in Erie Harbor. Hours of operation are 24 hours a day 7 days a week. Tug Kristin Joelle can be contacted on VHF channels 13 and 16. All mariners are requested to transit the area with caution.

LNM: 20/24

LAKE ERIE – OH - Ashtabula Harbor – Chart 14836

A submerged breakwater was constructed in Ashtabula harbor. It is connected to the existing East Breakwater. The submerged breakwater is connected to the East Breakwater at the first angle point of the East Breakwater, as entering the harbor, from the lake. All elevations referenced are referred to Low Water Datum (LWD), IGLD 1985.

The center line of the submerged breakwater approximately follows the same azimuth as the first segment of the East Breakwater, in a south easterly direction, for approximately 1000', then slightly bends to the east for another two segments, for approximately 500'.

The first 1000' (Area "A") has a crest design height of -2.0' with a crest width of 9', and a footprint of approximately 150', with the next 100' transitioning to the dimensions in the next item.

The final 400 (Area "B") has a crest height of -5.0', with a crest width of 9', and a footprint of approximately 50'.

The coordinates, in decimal degrees, are as follows:

1. 41.918447801N 80.790362308W
2. 41.916367139N 80.788014301W
3. 41.916189406N 80.787730327W
4. 41.916026216N 80.787424318W
5. 41.915640784N 80.786454826W
6. 41.916242815N 80.783904852W

All mariners are requested to transit the area with caution.

LNM: 17/23

LAKE ERIE – Cleveland Harbor – Chart 14839

Submerged obstructions were reported and confirmed in location 41° 29.380' N, 081° 41.906' W (NAD83) on the Cuyahoga river's left descending bank just east of the Columbus Road Bridge. The USACE completed a hydrological survey on 07 December 2023, which identified four obstructions on the river's bottom believed to be sections of steel corrugated bulkhead originating from a nearby retaining wall. The failed sections settled at the bottom of the river approximately 20 feet into the navigational channel and were measured to be between 18-21 feet from the water's surface. Marines may contact the Sector Eastern Great Lakes Command Center with any questions by phone at 716-843-9596. The most current USACE Hydrographic Survey data can be found on their website here: Buffalo District Maps and Charts (army.mil). All mariners are requested to transit the area with extreme caution.

LNM: 51/23

LAKE ERIE – Cleveland Harbor

From 6 May 2024 to 18 July 2024 Ryba Marine Construction Co will be conducting dredging in Cleveland OH. Hours of operation are 24 hours a day 7 days a week. Tug Kathy Lynn can be contacted on VHF channels 13 and 16. All mariners are requested to transit the area with caution.

LAKE ERIE – Cleveland Harbor

LNM: 18/24

LAKE ERIE- Rocky River

Shoaling has been reported at the mouth of the Rocky River and throughout its entirety, exceeding 5 feet above low water datum inside the main channel. Of major note, the turning basin located at the mouth of the river on the west bank measures in areas at less than one foot. The latest U.S. Army Corps of Engineers hydrological survey can be found online via links above. All mariners are requested to transit the area with caution.

LNM: 08/24

LAKE ERIE - Avon Lake

There will be a safety zone on all navigable Waters of Lake Erie within a 750-yard radius of the Avon Lake Power Plant, Avon Lake, OH located at position 41-30.250 N 082-3.233 W due to structure deconstruction. The safety zone will be in effect on July 31 from 4:30 a.m. to 8:30 a.m. (local). All Mariners are advised not to enter the safety zone without the approval of the Coast Guard via VHF channel 16.

LNM: 29/24

LAKE ERIE – Maumee River

From 08 Jan 2024 to 31 Oct 2025 Mark Haynes Construction will be conducting island restoration of the Clark and Delaware/Horseshoe islands on the Maumee River near river mile 9. Hours of operation are from 0700 to 1700 Monday to Thursday. Two temporary causeways are constructed between the shore and islands that block the side channel at the following locations.

1. Immediately downstream of the Maumee River Yacht Club.
2. Walbridge Park Boat launch.

Boaters entering the river should follow alternate routes marked by temporary buoys. For more information, please visit: <https://www.toledoport.org/projects/clark-and-delawarehorseshoe-islands-restoration-projects/>

LNM: 08/24

LAKE ERIE - Monroe

From 01 July 2024 to 01 Oct 2024 Dean Marine and Excavating will be dredging in Monroe MI. Hours of operation are 24 hours a day 7 days a week. Tug Megan and Dredge Louise can be contacted on VHF channels 16 and 79. All mariners are requested to transit the area with caution.

LNM: 26/24

DETROIT RIVER – Belle Isle Intake

From 15 Apr 2024 to 15 Oct 2024 Dean Marine and Excavating will be conducting shoreline rehabilitation near the intake point Belle Isle. Hours of operation are from 0600 to 1900 7 days a week. Vessels can be contacted on VHF channels 16 and 79. All mariners are requested to transit the area with caution.

LNM: 14/24

DETROIT RIVER - Rouge River

From 24 Apr 2024 to 15 Sep 2024 Great Lakes Dock and Materials will be conducting mechanical dredging and capping in the Lower Rouge River. Hours of operation 12 Hours a day Monday thru Saturday. Barge Jacqueln, Tug Duluth and Tug Tracy Lynn can be contacted on VHF channels 16 and 18. All mariners are requested to transit the area with caution.

LNM: 17/24

LAKE ST. CLAIR

From 22 July 2024 to 31 July 2024 the AEM Group will be conducting sediment sampling in the upper St. Clair river and Lake Huron located upstream from Underwater railroad track crossing in Port Huron to five miles in the Federal Navigation Channel in Lake Huron. Hours of operation are from 0600 to 2000 7 days a week. All mariners are requested to transit the area with caution

LNM: 27/24

ST. MARYS RIVER – Neebish Channel

From 01 May 2024 to 01 Sep 2024 Roen Salvage Company will be conducting maintenance dredging in the Middle Neebish and West Neebish channels. Hours of operation are 24 hours a day 7 days a week. Tug David R Schanock can be contacted on VHF channels 7, 12 and 16. All mariners are requested to transit the area with caution.

LNM: 18/24

STRAITS OF MACKINAC

From 01 May 2024 to 01 October 2024 Kokosing Industrial Inc will be conducting stone laying over exposed sections of the new American Transmission Company 138V submarine power cables installed in 2021. Hours of operation are 24 hours a day 7 days a week. Tugs Nancy Anne, Champion, General, WM. Boyd, Shirley Ann and crew boat Timmy V can be contacted on VHF channels 13 and 16. All mariners are requested to maintain 500 yards away from survey vessels and to transit the area with caution.

LNM: 18/24

STRAITS OF MACKINAC – Point LaBarbe to McGulpin Point

From 29 May 2024 to 31 July 2024 Enbridge/Tetra Tech will be conducting underwater survey of Enbridge line 5 pipelines. Hours of operation are from 0600 to 1800 7 days a week. M/V Ugle Duckling can be contacted on VHF channels 13 and 16. The underwater survey effort will be conducted with a hybrid autonomous and remotely operated underwater vehicles (HAUV/ROV) with these vehicles supported from the vessel(s) noted above. All vessels are requested to remain 1500' (500-yard safety zone) away from the survey vessel.

LNM: 16/24

LAKE MICHIGAN – New Buffalo Harbor - Chart 14905

Shoaling has been reported near the middle of the channel immediately inside the break wall in New Buffalo Harbor, MI. The actual water depth is

LAKE MICHIGAN – New Buffalo Harbor - Chart 14905

currently significantly below the charted depth. Mariners are urged to use caution when transiting the area. For further details, contact Sector Lake Michigan at (414) 747-7182 or VHF channel 16.

LNM: 15/22

LAKE MICHIGAN – Port Sheldon – Chart 14932

Shoaling has been reported near Pigeon Lake at the Port Sheldon entrance. The actual water depth is currently significantly below the charted depth. Mariners are urged to use caution when transiting the area. For further details, contact Sector Lake Michigan at (414) 747-7182 or VHF channel 16.

LNM: 15/23

LAKE MICHIGAN - Manistee

Shoaling has been reported in Lake Manistee in position 44-15.41N, 086-18.76W. All mariners are requested to transit the area with caution. For further details, contact Sector Lake Michigan at (414) 747-7182 or VHF channel 16.

LNM: 15/24

LAKE MICHIGAN - Manistee

From 28 June 2024 to 15 Aug 2024 the King Company will be conducting hydraulic dredging in Manistee MI. Hours of operation are 24 hours a day 7 days a week. Dredge Buxton II can be contacted on VHF channels 16, 18, and 73. All mariners are requested to transit the area with caution.

LNM: 26/24

LAKE MICHIGAN - Saugatuck

From 5 June 2024 to 10 July 2024 the King Company Inc will be conducting hydraulic dredging in the outer channel of Saugatuck MI. Hours of operation are 24 hours a day 7 days a week. Dredge Barry J can be contacted on VHF channels 16, 18 and 73. Submerged dredge pipe will be lying on the lake floor, marked by orange round buoys every 500 feet. (2) white buoys will be seen North and South of the dredge. The white buoys indicate winch anchor locations. The disposal area starts south of the pier 4,900' and runs for an additional 1,600' south. The primary contact will be the Superintendent Robert Lister. His cell number is listed below. During rough seas, our pipe pontoon will be floating outside of the channel. It is bright yellow, 25'x8'x6' and has (2) flashing lights on each end that come on at night.

LNM: 23/24

LAKE MICHIGAN – Muskegon Channel – Chart 14906

The Coast Guard has received reports that the depths at the entrance to Muskegon Lake are less than the charted depths. All mariners are requested to transit the area with caution.

LNM: 17/23

LAKE MICHIGAN – Grand Haven

From 16 May 2023 to 15 July 2024 the U.S. Army Corps of Engineers will be conducting pier work at USACE facility and outer pierhead. Hours of operation are Wednesday May 22 through Wednesday May 29th 0700 to 1630, Wednesday June 5th through Wednesday June 12th 0700 to 1630, and Wednesday June 19th through Wednesday June 26th 0700 to 1630. Tug Mike Donlon can be contacted on VHF channels 16 and 17. All mariners are requested to transit the area with caution.

LNM: 20/24

LAKE MICHIGAN - Gary Indiana

From 5 June 2024 to 30 Oct 2024 Geodynamics, an NV5 Company will be conducting hydrographic survey in support of nautical chart updates. The survey area has nearshore work off Gary, In, Michigan City, In, ~4-8 nmi work off Highland Park, IL, and further offshore work ~9-20 nmi offshore of Chicago, IL. Surveys will be conducted 24 hours a day, 7 days a week, on the RV Substantial and 12 hours a day, 7 days a week on the RV Benthos. The RV Benthos is a 30 ft Armstrong aluminum catamaran survey vessel operating multibeam sonar. Provide 1/2 nautical mile distance when possible. Mariners are urged to transit at their slowest safe speed in the vicinity of the survey vessels to minimize wake. All survey vessels have AIS and will monitor VHF channels 16/13.

LNM: 22/24

LAKE MICHIGAN – Whihala Beach

Whoazone has established a waterborne obstacle course at the Whihala Beach that will be in operation from 10 June 2024 to 25 August 2024. It is requested that all traffic remain outside the designated area and transit the area with caution. Contact Sector Lake Michigan at (414) 747-7182 or Whoazone general manager at (219)234-2615.

LNM: 16/24

LAKE MICHIGAN - Indiana Harbor Canal

There is an obstruction on the south side of the Federal channel at the Indiana Harbor Canal in East Chicago, Indiana at the location of the former Canal St. bridge.

LNM: 16/24

LAKE MICHIGAN – Sheboygan River – Chart 14922

Shoaling has been reported in entrance of the Sheboygan River in the vicinity of 43-44.928N, 087-42.170W AND 43-44.936N, 087-42.110W. The actual water depth is currently significantly below the charted depth. Mariners are urged to use caution when transiting the area. For further details, contact Sector Lake Michigan at (414) 747-7182 or VHF channel 16.

LNM: 24/22

LAKE MICHIGAN - Kenosha

From 13 July 2024 to 24 July 2024 The King Company will be conducting dredging in the Kenosha Outer channel. Submerged dredge pipe will be lying

LAKE MICHIGAN - Kenosha

on the lake floor, marked by orange round buoys every 500 feet. (2) white buoys will be seen North and South of the dredge. The white buoys indicate winch anchor locations. The disposal area starts south of the breakwater 10,000' and runs North 3,000'. The primary contact will be the Superintendent Robert Lister. His cell number is listed below. During rough seas, our pipe pontoon will be floating outside of the channel and at the placement area to the south. It is bright yellow, 25'x8'x6' and has (2) flashing amber lights on each end that come on at night.

LNM: 28/24

LAKE MICHIGAN - Kenosha

From 15 July 2024 to 31 Aug 2024 Great Lakes Dock and Material will be conducting breakwater repair in Kenosha Harbor. Hours of operation are 24 hours a day 7 days a week. Vessels onscene can be contacted on VHF channels 16 and 18. All mariners are requested to transit the area with caution.

LNM: 28/24

LAKE SUPERIOR – Little Lake Harbor – Chart 14961

Shoaling has been reported in the entrance of Little Lake Harbor exceeding 5 feet above low water datum near the channel edges. Some cross sections of the channel are shoaled nearly the full width to 2 feet or more above low datum. The harbor should not be considered as a functional harbor or refuge. All mariners are requested to transit the area with caution.

LNM: 47/22

LAKE SUPERIOR - Two Harbors

1. THE UNIVERSITY OF MINNESOTA DULUTH AND NATIONAL WEATHER SERVICE HAS TEMPORARILY ESTABLISHED A LIGHTED BUOY, YELLOW FL 4S, IN POSITION 47-01-15.000N 091-37-30.000W, EAST OF TWO HARBORS, MN. TO RECORD METEOROLOGICAL DATA FOR WEATHER AND SCIENTIFIC OBSERVATIONS FROM JULY THRU NOVEMBER.

LNM: 27/24

SECTION VIII - LIGHT LIST CORRECTIONS

An Asterisk *, indicates the column in which a correction has been made to new information

| (1) No. | (2) Name and Location | (3) Position | (4) Characteristic | (5) Height | (6) Range | (7) Structure | (8) Remarks |
|------------|--------------------------|-----------------|-----------------------|---------------|--------------|------------------|----------------|
|------------|--------------------------|-----------------|-----------------------|---------------|--------------|------------------|----------------|

)

PUBLICATION CORRECTIONS

None

ENCLOSURES

(1) LNM Section I - Special Notices

1-Great Lakes Water Levels

LNM: 06/22

(2) LNM Section II - Discrepancies

N/A

LNM: 19/19

(3) LNM Section III - Temporary Changes and Temporary Changes Corrected

N/A

LNM: 19/19

(4) LNM Section IV - Chart Corrections

N/A

LNM: 19/19

(5) LNM Section V - Advance Notices

N/A LNM: 19/19

(6) LNM Section VI - Proposed Changes

N/A LNM: 19/19

(7) LNM Section VII - General

1-Marine Events
2-Current Ninth District Bridge Maintenance/Activities
3-Waterway Analysis and Management System Survey LNM: 19/19

(8) LNM Section VIII - Light List Corrections

N/A LNM: 19/19

J. P. Hickey, RADM
U. S. Coast Guard
Commander, Ninth Coast Guard District

GREAT LAKES, CONNECTING CHANNELS AND ST. LAWRENCE RIVER WATER LEVELS AND DEPTHS

Expected water levels on the Great Lakes, Connecting Channels and the St. Lawrence River are given in inches above (+,0) or below (-,0) Low-Water Datum (LWD,0). LWD is a plane of reference on a navigation chart, also known as Chart Datum. LWD elevations shown below are given in International Great Lakes Datum, 1985 (IGLD 1985,0).

| | Forecast Point | Low Water Datum IGLD 1985 | Expected Levels (inches above or below Low Water Datum,0) | | | | |
|-----------------------------------|----------------|------------------------------|---|--------|--------|--------|--------|
| | | | Current | Week 1 | Week 2 | Week 3 | Week 4 |
| | | | 5-Jul | 12-Jul | 19-Jul | 26-Jul | 2-Aug |
| GREAT LAKES | | | | | | | |
| Lake Ontario | | 243.3 | 31 | 30 | 30 | 30 | 29 |
| Lake Erie | | 569.2 | 45 | 44 | 43 | 42 | 41 |
| Lake St. Clair | | 572.3 | 43 | 42 | 41 | 41 | 40 |
| Lake Michigan-Huron | | 577.5 | 27 | 27 | 27 | 27 | 27 |
| Lake Superior | | 601.1 | 12 | 12 | 13 | 14 | 14 |
| ST. LAWRENCE RIVER | | | | | | | |
| Above Long Sault Dam | 0 | 237.9 | 36 | 35 | 34 | 34 | 34 |
| Above Iroquois Dam | 1 | 240.3 | 27 | 26 | 26 | 26 | 25 |
| Ogdensburg | 2 | 242.4 | 28 | 27 | 26 | 26 | 25 |
| Alexandria Bay | 2.1 | 243.0 | 30 | 29 | 29 | 29 | 28 |
| Head of river at Cape Vincent | 3 | 243.3 | 31 | 30 | 30 | 30 | 29 |
| DETROIT RIVER | | | | | | | |
| Lake Erie at Pelee Passage | 4 | 569.2 | 45 | 44 | 43 | 42 | 41 |
| Mouth of River at Gibraltar | 5 | 569.5 | 48 | 46 | 46 | 45 | 43 |
| Fort Wayne | 5.1 | 571.1 | 47 | 46 | 46 | 45 | 44 |
| Head of River above Belle Isle | 6 | 572.0 | 44 | 43 | 42 | 42 | 41 |
| ST. CLAIR RIVER | | | | | | | |
| Mouth of River at St. Clair Flats | 7 | 572.3 | 43 | 42 | 41 | 41 | 40 |
| Algonac | 8 | 572.8 | 42 | 41 | 41 | 40 | 39 |
| St. Clair | 9 | 574.4 | 38 | 38 | 38 | 37 | 37 |
| Blue Water Bridge | 10 | 576.2 | 34 | 34 | 34 | 34 | 34 |
| Head of River at Fort Gratiot | 11 | 577.2 | 30 | 30 | 30 | 29 | 29 |
| Lake Huron Approach Channel | 12 | 577.5 | 27 | 27 | 27 | 27 | 27 |
| ST. MARYS RIVER | | | | | | | |
| Mouth of River at Detour | 13 | 577.5 | 27 | 27 | 27 | 27 | 27 |
| West and Middle Neebish | 14 | 577.8 | 24 | 24 | 24 | 24 | 24 |
| Head of Little Rapids | 15 | 578.4 | 22 | 22 | 22 | 22 | 22 |
| U.S. Slip | 16 | 578.7 | 20 | 20 | 20 | 20 | 20 |
| Above Locks | 17 | 600.4 | 14 | 15 | 15 | 16 | 17 |
| Head of River at Point Iroquois | 18 | 601.1 | 12 | 12 | 13 | 14 | 14 |

UNDERSTANDING THE FORECAST

Available water depth is determined for a location by adding (if+) or subtracting (if-) the amount from the above table to the appropriate channel depth shown in the profile Connecting Channel Depths Graphic or to water depths shown on National Oceanic and Atmospheric Administration (NOAA) navigational charts.

CAUTION

Depths so determined are representative of a still water surface elevation, disturbed by neither wind nor other causes. Depths, however, may be reduced or increased as much as several feet for short periods due to these disturbances, or when sections of channels develop shoals. Vessel masters should refer to "Local Notice to Mariners" for extent of shoaling and scattered bedrock projections in all channels. Ice conditions can have a dramatic impact on actual channel depth and can lead to large short-term water level fluctuations. Ice information can be found at the National Ice Center's website.

FOR FURTHER INFORMATION CONTACT:

Detroit District Corps of Engineers
477 Michigan Avenue
Detroit MI, 48226
1-888-694-8318 ex. 1
email: hphm@usace.army.mil

FOR MORE INFORMATION VISIT:

[Detroit District Great Lakes Homepage](#)
[International Joint Commission](#)
[Great Lakes Information Network](#)
[NOAA Tides and Currents](#)
[U.S. Coast Guard - District 9](#)

WATER LEVEL INFORMATION SUPPLIED BY:

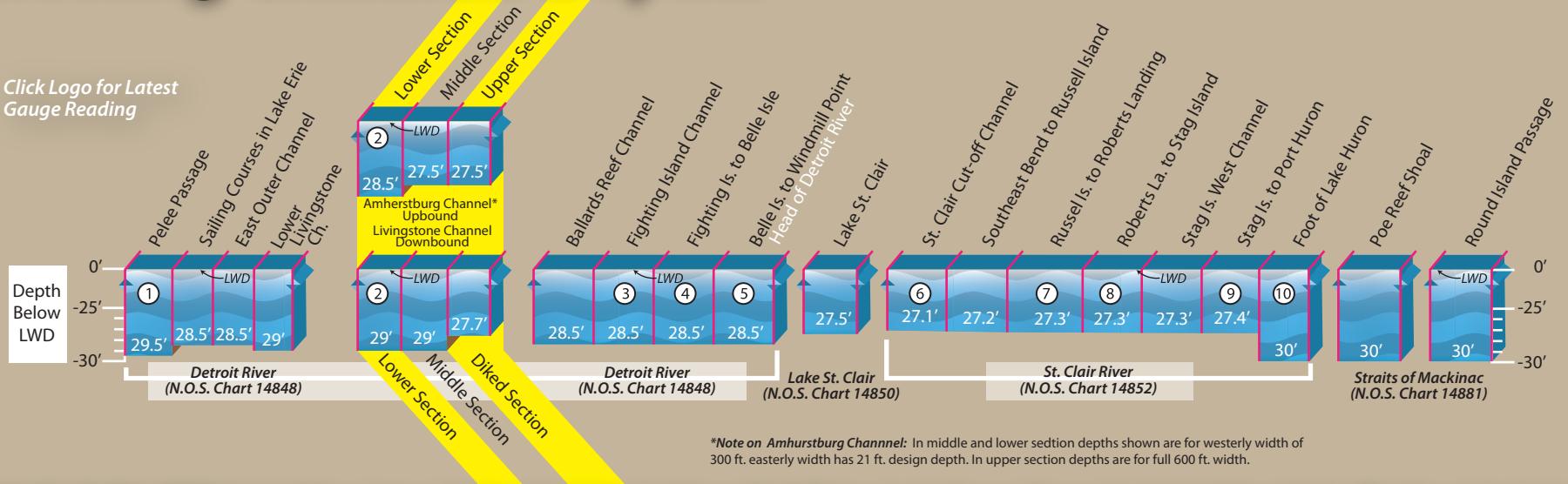
NOAA, National Ocean Service
SSMC4, STATION 7523
1305 East-West Hwy
Silver Spring, MD 20910-3233
(301) 713-2902

Connecting Channels Depths

Detroit & St. Clair Rivers



Click Logo for Latest Gauge Reading



*Note on Amherstburg Channel: In middle and lower section depths shown are for westerly width of 300 ft. easterly width has 21 ft. design depth. In upper section depths are for full 600 ft. width.

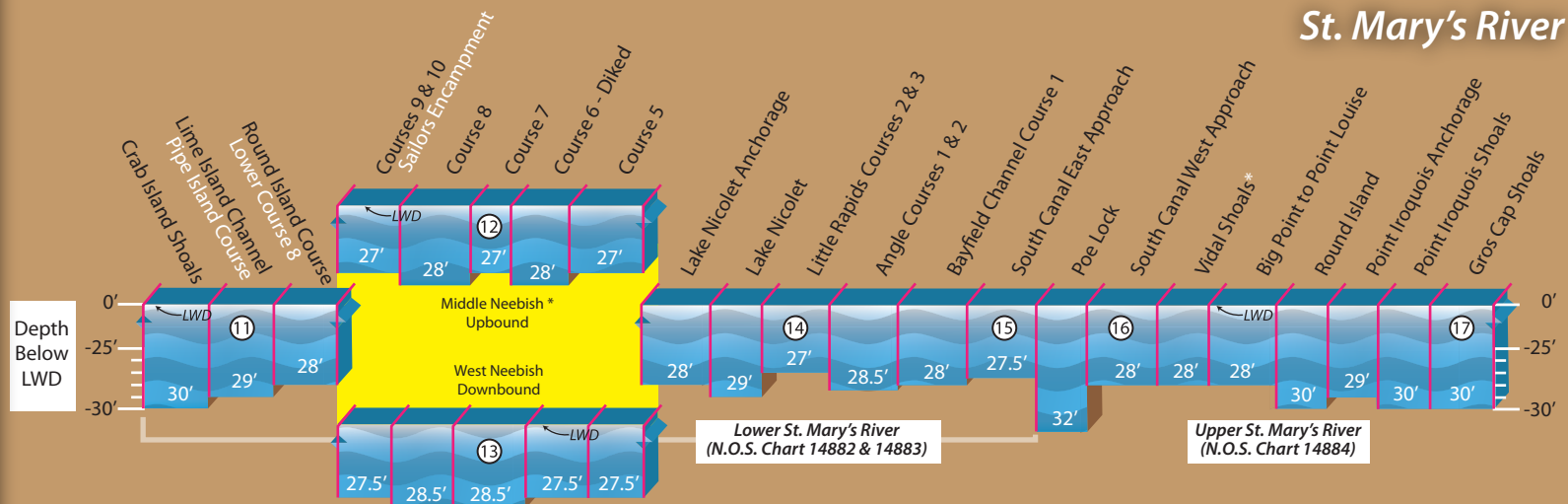
Detroit & St. Clair Rivers NOAA Gauge Locations: 1. Fermi, 2. Gibraltar, 3. Wyandotte, 4. Fort Wayne, 5. Windmill Point, 6. St. Clair Shores, 7. Algonac, 8. St. Clair State Police, 9. Mouth of Black River, 10. Fort Gratiot

This Chart is for general information only.

Vessel masters should refer to Local Notice to Mariners for extent of shoaling and scattered bedrock projections in all channels.

The connecting channels, as authorized, provide depths varying from 27 to 30 feet below Low Water Datum (LWD), depending on exposure of channel, hardness of bottom material and vessel squat in each reach. These depths are designed to permit maximum draft of 25'6" for lake vessels when the water level is at LWD. However, the individual vessel master should give further consideration to the characteristics peculiar to his vessel and to his individual clearance and safety requirements in determining the safe draft to which to load his vessel.

St. Mary's River



*Note on Middle Neebish: In courses 5, 6, 7, 8 & 9 depths shown are westerly width of 300 ft. in course 8 depth shown is for westerly width of 600 ft. In all courses easterly width has 21 ft. design depth.

*Note on Vidal Shoals: For the entire channel length, a design depth of 29' exist from 500' South to 300' North of the channel centerline. What remains of the 1500' total channel width is at a 28' project depth.

St. Mary's River NOAA Gauge Locations: 11. De Tour Village, 12. West Neebish Is, 13. Rock Cut, 14. Little Rapids, 15. U.S. Slip, 16. S.W. Pier 17. Point Iroquois



US Army Corps of Engineers®
Detroit District

GREAT LAKES-MARINE EVENT-SAFETY ZONES-SECURITY ZONES

Events listed below are those events that may have accompanying special local regulations.

| <u>Location</u> | <u>Name of Event</u> | <u>Date / Time</u> | <u>POC</u> | <u>Tel #</u> |
|----------------------------|---|---------------------------|-------------------|---------------------------------------|
| Morristown, NY. | Brockville Yacht Club | 15 May - 15 Oct | 1730-2030 | Jason VanBlitterswyk 613-342-4155 |
| Massena, NY | Major League Fishing | 7/20/2024 | 0600-1400 | Steve Sizemore 270-703-8882 |
| Henderson Harbor | Christmas in July Regatta | 7/27/2024 | 1600-2200 | Gail Smith 480-296-3357 |
| <u>LAKE ONTARIO</u> | | | | |
| Youngstown, NY | LOOR LO300 | 13-17 Jul-24 | 1000-2400 | Graham Dougall 866-462-8828 |
| Youngstown, NY | LOOR LOSHRS Race 4 (Long Distance/100 miler) | 17-18 Aug=24 | 1000-2330 | Graham Dougall 866-462-8828 |
| Sodus Bay, NY | Breakwater Barrier Construction Project outside Sodus | 1 Apr-24-15 May-24 | 0700-2000 | Glen Roet 315-564-6784 |
| Sodus Bay, NY | Breakwater Barrier Construction Project outside Sodus | 1 Aug- 31 Oct | 0700-2000 | Glen Roet 315-564-6784 |
| Rochester, NY | Don Van Vechten Sunfish Regatta | 3-Aug-24 | 1000-1500 | William Dexter 585-461-2422 |
| Rochester, NY | Brown Jug Afternoon Race | 2-3 Sep | 1200-1530 | William Dexter 585-461-2422 |
| Rochester, NY | Thistle Sailboat Fall Frontier Regatta | 7-8 Sep | 1100-1400 | William Dexter 585-461-2422 |
| Rochester, NY | RYC 2024 High School Sailing Program | 13 Mar-10 Nov | various | Peter Mendick 585-342-5511 |
| Rochester, NY | Lake Ontario Club Challenge LOCC | 19-21 Jul | various | Peter Mendick 585-342-5511 |
| Rochester, NY | RYC Annual Memorial Day Fleet Review | 27-May-24 | 1450-1900 | Peter Mendick 585-342-5511 |
| Rochester, NY | RYC Jr Sail Instruction | 19 Jun- 12 Aug | 0900-1600 | Peter Mendick 585-342-5511 |
| Rochester, NY | Melges 15 Great Lakes Championship | 12-14 Jul | various | Peter Mendick 585-342-5511 |
| Rochester, NY | Lake Ontario Yacht Racing Association LYRA Regatta | 29 Jul-4 Aug | various | Peter Mendick 585-342-5511 |
| Rochester, NY | Junior Olympics | 9-11 Aug | various | Peter Mendick 585-342-5511 |
| Rochester, NY | Hospice Regatta | 16-17 Aug | various | Peter Mendick 585-342-5511 |
| Rochester, NY | Lambert Lai Regatta | 23-25 Aug | various | Peter Mendick 585-342-5511 |
| Rochester, NY | Genesee Yacht Club Tuesday Night Racing | 21 May - 17 Sep | 1730-2000 | Kenny Fourspring 814-746-2183 |
| Rochester, NY | Genesee Yacht Club Saturday Morning Racing | 25 May - 5 Oct | 1000-1300 | Kenny Fourspring 814-746-2183 |
| Rochester, NY | Genesee Yacht Club Boat Parade | 26-May-24 | 1300-1500 | Kenny Fourspring 814-746-2183 |
| Rochester, NY | Genesee Yacht Club Scotch Bonnet Light Race | 23-24 Aug | 1700-1700 | Kenny Fourspring 814-746-21440-781-03 |
| Rochester, NY | RYC 2024 One Design and Offshore Racing Series | 14 May - 14 Oct | various | Peter Mendick 585-342-5511 |
| Niagara Falls, NY | Red Bull Niagara Swoop | 04SEP24-07SEP24 | 0000-1830 | Joe Kazar 518-859-6946 |
| Rochester, NY | Head of Genessee Regatta | 12OCT24-16OCT24 | 0600-1800 | Liana Spencer 585-967-8683 |
| <u>LAKE ERIE</u> | | | | |
| Erie, PA | Jamison Family Heatwave Race #3 | 27-Jul-22 | 1600-1900 | Sharon Dale 814-724-9968 |
| Erie, PA | Night Light House Race | 16-Aug-24 | 2000-0300 | Sharon Dale 814-724-9968 |
| Buffalo, NY | China Light Series (Tuesday Night Series), Buffalo Harb | 21 May - 3 Sep | 1810-2130 | Laura Redding 716-574-0540 |

| | | | | | |
|----------------------|--|------------------|------------------------|---------------------|---------------|
| Buffalo, NY | Wednesday Night Series, Buffalo Harbor Sailing Club Race | 22 May - 4 Sep | 1810-2130 | Laura Redding | 716-574-0540 |
| Buffalo, NY | Chuck Chilcott Summer Regatta, Buffalo Harbor Sailing Club | 12-13 Jul | 1810-1810 | Laura Redding | 716-574-0540 |
| Buffalo, NY | Double Hand Series, Buffalo Harbor Sailing Club Race | 5-25 Jul- 15 Aug | 1810-2130 | Laura Redding | 716-574-0540 |
| Buffalo, NY | Last Chance Regatta, Buffalo Harbor Sailing Club Race | 11-Sep-24 | 1030-1430 | Laura Redding | 716-574-0540 |
| Buffalo, NY | Die Hard Series, Buffalo Harbor Sailing Club Race | 11 Sep -25 Sep | 1810-2130 | Laura Redding | 716-574-0540 |
| Buffalo, NY | Head of the Niagara | 13-Oct-24 | 0700-1400 | Ian Suchan | 716-604-5156 |
| Sheffield Lake, OH | Sheffield Lake Annual Community Days Festival | 19-Jul-24 | 2200-2230 | Katie DuVerney | (330)650-1776 |
| Cleveland, OH | 28th Annual Head of the Cuyahoga Regatta | 21-Sep-24 | 0500-1700 | Jen Forbes | (216)308-4183 |
| Madison Township, OH | Madison Township Light Up The Park | 10-Aug | 2130-2200 | John Cross | (330)650-1776 |
| Cleveland/Ohio | 2024 Pan-American Masters Games (Triathlon) | 13-Jul-24 | 9:30 a.m. - 2:00 p.m. | Capt. Drew Ferguson | 216-701-5582 |
| Cleveland/Ohio | 2024 Pan-American Masters Games (Triathlon) | 14-Jul-24 | 0530-0930 | Capt. Drew Ferguson | 216-701-5582 |
| Akron, OH | 2024 Brogan Open Water Classic | 29-Jun-24 | 0700-1100 | Chuck Beatty | (330)808-4821 |
| Cleveland, OH | Whiskey Island Boat Club Parade of Lights | 20-Jul-24 | 2130-2300 | Denny Prochaska | 440-390-8228 |
| Cleveland/Ohio | 2027 Pan-American Masters Games (Rowing) | 14-Jul-24 | 0530-1330 | Capt. Drew Ferguson | 216-701-5582 |
| Ashtabula, OH | Wine and Walleye Festival | 27 Jul 2024 | 8:30 p.m. - 11:30 p.m. | Shawn Gruber | 440-344-1870 |
| Buffalo, NY | GPI NYSTA South Grand Island Bridge Survey | 15JUL24-19JUL24 | 0800-1800 | Michael Nitchman | 518-859-6946 |
| North Tonawanda, NY | Canal Fest of the Tonawanda's-Sika Cup | 20-Jul-24 | 1800-1900 | Peter Chenier | 716-846-4296 |
| Northeast, PA | Erie Swim | 28-Jul-24 | 0500-2100 | Steve Bedilion | 412-334-9072 |
| Erie, PA | Jamison Family Heatwave Race #3 | 27-Jul-24 | 1600-1900 | Sharon Dale | 814-724-9968 |
| Erie, PA | Erie Yacht Club Open Regatta | 03AUG24-04AUG24 | 1000-1800 | Sharon Dale | 814-724-9968 |
| Erie, PA | Night Light House Race | 16AUG24-17AUG24 | 2000-0300 | Sharon Dale | 814-724-9968 |
| Huron | Huron River Fest | 7/12/2024 | 2200-2230 | USCG | 313-568-9560. |

DETROIT RIVER

LAKE ST. CLAIR/St. Clair River

| | | | | | |
|------------------|--|-----------|-----------|------|---------------|
| Detroit | Swim Across America | 7/12/2024 | 0700-1200 | USCG | 313-568-9560. |
| Trenton | MLF BFL Bass Tournament #2 | 7/13/2024 | 0600-1400 | USCG | 313-568-9560. |
| St. Clair Shores | Lake Shore Sail Club Sunday Race #3 | 7/14/2024 | 1330-1500 | USCG | 313-568-9560. |
| Grosse Pointe | Windsor Yacht Club Race #9 | 7/10/2024 | 1900-2200 | USCG | 313-568-9560. |
| Essesxcille | Bayview Yacht Club Sailboat - Wednesday night Racing | 7/10/2024 | 1800-2200 | USCG | 313-568-9560. |
| Harbor Beach | Harbor Beach Fireworks | 7/13/2024 | 2100-2300 | USCG | 313-568-9560. |

LAKE MICHIGAN & Green Bay

N/A

LAKE SUPERIOR

N/A

CURRENT NINTH DISTRICT BRIDGE MAINTENANCE/ACTIVITIES

Local Notice to Mariner Week

[29/24]

Note: Short-term bridge maintenance closures and various activities may only be published [through Broadcast Notice to Mariners](#) and may not be included [in the Local Notice to Mariners](#). Mariners should both *listen* to Broadcast Notice to Mariners (BNM) and *read* Coast Guard Local Notice to Mariners (LNM) available by clicking [HERE](#) for the most recent and complete marine information.

There is a Microsoft Teams meeting with the US Coast Guard, Mariners, and Bridge Owners being held on the last Wednesday of every month at 1300 ET, and **YOU** are welcome to join in.

Join on your computer or mobile app

[Click here to join the meeting](#)

Or call in (audio only)

[+1 410-874-6742,,515305017#](#)

Phone Conference ID: 515 305 017#

PUBLIC NOTICES FOR 9th District BRIDGES: <https://www.navcen.uscg.gov/D9BN>

Please contact us with any questions or concerns:

Blair Stanifer (216) 902-6086 or William.B.Stanifer@uscg.mil
Lee Soule (216) 902-6085 or Lee.D.Soule@uscg.mil
Michael Walker (216) 902-6087 or Michael.O.Walker2@uscg.mil
FAX: (216) 902-6088

Commander (dpb)
Ninth Coast Guard District
1240 E. 9th St. Room 2047B
Cleveland, Ohio 44199-2001

FEDERAL REGULATIONS DOCKET STATUS

[Regulations.gov](#) enter the USCG - docket number in the search window to review all comments and documents associated with the project.

USCG-2023-0185 - FR – Sandusky Bay – to Command for Approval
USCG-2024-0018 - FR -Cherry Street Bridge, Milwaukee River – Pending Legal Review
USCG-2024-0407 - TD - Manitowoc, WI – Pending Legal Review

GREAT LAKES REGION

GREAT LAKES, Drawbridge Delay Reports, Chart 14500

Mariners are requested to submit Reports of Drawbridge Signal/Operations Delays directly to the Ninth Coast Guard District Bridge Branch using the attached form. Reports of signal or drawbridge delays have been processed by Coast Guard Marine Safety Offices in recent years but will now be processed and traced by the Bridge Branch. Reports may be sent by mail, e-mail, or by fax. The mailing address and fax number are on the form.

[08/05] [34/12]

ST. LAWRENCE SEAWAY

NY STATE CANAL SYSTEM

(Everything West of St. Johnsville, NY)

NY - NEW YORK STATE CANAL SYSTEM - Erie Canal – Chart 14786

From March 15, 2024, through **January 31, 2025**, daily, contractors will utilize scaffolding and man lifts above low steel of the E144C I-390 Bridge at mile 258.65 and the E144D I-390 Bridge at mile 258.68 over the Erie Canal.

[42/23]

NY - NEW YORK STATE CANAL SYSTEM - Erie Canal – Chart 14786

From April 8, through **July 31, 2024**, between the hours of 0700 and 1700, Monday through Friday, contractors will utilize snooper trucks under the E-233 Main Street Bridge at Mile 320.82, the E-234 Transit Street Bridge at Mile 564.00, the E236a Lockport Bypass Bridge at Mile 564.17, and the E-248 Webster Street Bridge at Mile 338.44, all over the Erie Canal. Spotters will warn of approaching vessels and move the man lift to allow vessels to pass. Mariners should avoid passing directly under water falling from the bridge.

[02/24]

NY - NEW YORK STATE CANAL SYSTEM - Erie Canal – Chart 14786

From May 6 through **August 31, 2024**, between the hours of 0700 and 1700, Monday through Friday Snooper trucks will be washing the all the bridges from the E-29 Lansing Road Bridge at Mile 74.94 to the E-52 Erie Boulevard Bridge at Mile 115.08 over the Erie Canal. Spotters will warn of approaching vessels and move the man lift to allow vessels to pass. Mariners should avoid driving through or under clean falling water from the bridge.

[11/24]

NY - NEW YORK STATE CANAL SYSTEM - Erie Canal – Chart 14786

From June 10, through **November 8, 2024**, between the hours of 0600 and 2100, daily, a 30-foot Harcon will be inspecting all bridges from E101 Leach Road Bridge at Mile 221.01 to E211 County Road 5 Bridge at Mile 304.13 over the Erie Canal. The Harcon will monitor VHF-FM marine Channel 16 and will move to accommodate vessels if a 30-minute advance notice is provided.

[17/24]

NY - NEW YORK STATE CANAL SYSTEM - Cayuga – Seneca Canal – Chart 14786

From July 7, through **September 30, 2024**, scaffolding that hangs approximately 6-feet below low steel will be installed under one half of the S6, Ovid Street Bridge at Mile 8.65, over the Cayuga – Seneca Canal.

[18/24]

NY - NEW YORK STATE CANAL SYSTEM – Erie Canal, Cayuga – Seneca Canal, and Oswego Canal, Chart 14876

From May 20 through **September 27, 2024**, between the hours of 0730 and 1700, Monday through Friday a 35-foot Harcon will be inspecting the bridges between the E-64 Brewerton Road Bridge at Mile 150.85 and the E-92 Armitage Road Bridge at Mile 205.59 over the Erie Canal, including the S1 US 20 Bridge at Mile 2.97 to the S10 Gorham Street, Mile 11.71, over the Cayuga-Seneca Canal, and the O05 Humansville Road Bridge, over the Oswego Canal. The Harcon will move with a 30-minute advance notice. Mariners should provide advance notice on VHF -FM Marine Channel 16.

[18/24]

NY - NEW YORK STATE CANAL SYSTEM – Erie Canal, Cayuga – Seneca Canal, and Oswego Canal, Chart 14876

From May 20 through **August 31, 2024**, between the hours of 0800 and 2000 daily, contractors will be utilizing

snooper trucks to wash the underside of all bridges from the E-99 CSXT Railroad Bridge at Mile 219.94 through E-212 Marshal Road Bridge at Mile 305.63 over the Erie Canal. Spotters will warn works of approaching vessels and move the man lift to allow vessels to pass. Mariners should avoid navigating under large amounts of falling water.

[20/24]

NY - NEW YORK STATE CANAL SYSTEM - Erie Canal – Chart 14786

From September 29, 2024, through **October 1, 2024**, inspectors will install scaffolding under the E-101 Leach Road Bridge at Mile 221.01 over the Erie Canal that extends approximately 6-feet below low steel under one half of the bridge.

[21/24]

NY - NEW YORK STATE CANAL SYSTEM - Erie Canal – Chart 14786

From July 8, 2024, through **November 30, 2024**, scaffolding will be installed under the E-234 Transit Road Bridge at Mile 320.97 over the Erie Canal that hangs approximately 3-feet below low steel.

[24/24]

NY - NEW YORK STATE CANAL SYSTEM - Erie Canal – Chart 14786

From March 1, 2025, through **June 30, 2025**, scaffolding will be installed under the E-234 Transit Road Bridge at Mile 320.97 over the Erie Canal that hangs approximately 3-feet below low steel.

[24/24]

NY - NEW YORK STATE CANAL SYSTEM - Erie Canal – Chart 14786

From July 22 through **July 26, 2024**, between the hours of 0730 and 1700, daily, a 35-foot Harcon will be inspecting the E-83 State Route 34 Bridge at mile 188.87 over the Erie Canal. The Harcon will monitor VHF-FM marine Channel 16 and move to accommodate vessel traffic with a 30-minute advance notice of arrival.

[25/24]

LAKE ONTARIO

NY - LAKE ERIE – Rochester Harbor – Chart 14815

On **September 15, 2024**, between the hours of 0745 and 0930, the O'Rourke Bridge at Mile 1.25 over the Genesee River will be secured to masted navigation in conjunction with the Rochester Marathon. Vessels able to pass under the bridge without an opening may do so at any time.

[16/24]

LAKE ERIE - MAHONING RIVER - NIAGARA RIVER- ALLEGHENY RIVER

NY - LAKE ERIE – Buffalo Harbor – Chart 14833

From January 1 through **March 31, 2025**, the Canadian National International Railroad Bridge at mile 3.8 over the Black Rock Canal will be secured to masted navigation for maintenance. Vessels able to pass under the bridge without an opening may do so at any time.

[30/23]

NY - LAKE ERIE – Niagara River – Chart 14833

From August 28, 2023, through **July 26, 2026**, scaffolding that extends approximately 3-feet below low steel will be installed under the South Grand Island Bridge at Mile 3.40 and the North Grand Island Bridge at Mile 18, both over the Niagara River. A 16-foot by 32-foot materials barge and a 4-foot by 40-foot temporary dock will be used under the bridges.

[32/23]

OH - LAKE ERIE – Cleveland Harbor – Chart 14839

From June 1, 2024, through **September 30, 2026**, daily scaffolding will be installed under the I-490 Bridge at mile 4.79 over the Cuyahoga River that hangs approximately 4-feet below low steel. Snooper vehicles and manlifts will be used. Spotters will warn workers of approaching vessels and move the manlift to allow vessels to pass.

[43/23]

OH - LAKE ERIE – Cleveland Harbor – Chart 14839

On **July 20, 2024**, between the hours of 1000 and 1040, the Carter Road Bridge at mile 2.43 over the Cuyahoga River will be secured to masted navigation in conjunction with the Parrot Head Race. Vessels able to pass under the bridge without an opening may do so at any time.

[15/24]

NY - LAKE ERIE – Niagara River – Chart 14833

From June 15 through **September 30, 2024**, between the hours of 0700 and 1600, Monday through Friday. A 100-foot by 34-foot barge will be washing the South Grand Island Bridge at Mile 3.40 and the North Grand Island Bridge at Mile 18, both over the Niagara River. Mariners should avoid passing under clean falling water. The barge will monitor VHF-FM Marine Channel 16 and will make passing arrangements with vessels as needed.

[16/24]

OH - LAKE ERIE – Toledo Harbor – Chart 14847

On **August 4, 2024**, between the hours of 0900 and 1100, the Martin Luther King Jr. Memorial Bridge at Mile 4.30 over the Maumee River will be secured to masted navigation in conjunction with the Toledo Jeep Fest Event. Vessels able to pass under the bridge without an opening may do so at any time.

[21/24]

OH - LAKE ERIE – Toledo Harbor – Chart 14847

On **September 15, 2024**, between the hours of 1000 and 1130, the Martin Luther King Jr. Memorial Bridge at Mile 4.30 over the Maumee River will be secured to masted navigation in conjunction with the ProMedica Be Fast Event. Vessels able to pass under the bridge without an opening may do so at any time.

[21/24]

OH - LAKE ERIE – Cleveland Harbor – Chart 14839

On **October 5, 2024**, between the hours of 0700 and 1400, the Carter Road Bridge at Mile 2.43 over the Cuyahoga River will be secured to masted navigation in conjunction with the Towpath Marathon. Vessels able to pass under the bridge without an opening may do so at any time.

[23/24]

OH - LAKE ERIE – Cleveland Harbor – Chart 14839

On **July 16, 2024**, between the hours of 0700 and 1700, the West 3rd Street Bridge at Mile 3.69, over the Cuyahoga River will require a 30-minute advance notice to move inspectors from the bridge. Mariners should provide advance notice directly to the drawtender on VHF-FM Marine Channel 16. A rain date of July 18th has been authorized.

[26/24]

OH - LAKE ERIE – Cleveland Harbor – Chart 14839

The Coast Guard has received a report that some of the lights on the Columbus Road Bridge at Mile 1.93 and the Carter Road Bridge at Mile 2.43 over the Cuyahoga River are extinguished.

[29/24]

OH - LAKE ERIE – Toledo Harbor – Chart 14847

From July 17, 2024, through **March 31, 2025**, a 60-foot by 60-foot barge will be working at the Martin Luther King Jr. Memorial Bridge at Mile 4.30 over the Maumee River. The barge will move to accommodate larger vessels if provided a 3-hour advance notice directly to the barge on VHF-FM Marine Channel 16. Additionally, from December 1, 2024,

through March 31, 2025, scaffolding/containment will be installed that hangs approximately 3-feet below low steel of the bridge bascule spans; however, the scaffolding will allow the bridge to operate normally.

[29/24]

NY - LAKE ERIE – Niagara River – Chart 14833

From July 29, 2024, through **August 16, 2024**, a 100- foot by 34-foot barge and 16- foot by 32-towboat will be inspecting the South Grand Island Bridge at Mile 3.40 over the Niagara River. The barge will monitor VHF-FM Marine Channel 16 and will move to accommodate vessel traffic if a 30-minute notice is provided.

[29/24]

DETROIT RIVER - LAKE ST. CLAIR - ST. CLAIR RIVER – RIVER ROUGE

*****REVISED*****

MI - DETROIT RIVER – Main Channel – Chart 14848

From November 1, 2022, through **August 18, 2024**, contractors will be constructing the Gordie Howe International Bridge at mile 16.7 over the Detroit River. No equipment will be placed in the water. Overhead work will have temporary steady burning yellow lights to mark new construction. A moving platform with quick flashing red lights and orange or red ball fenders on the bottom four corners with a safety net that hangs approximately 15-feet below low steel will be constructing the bridge. Mariners should avoid passing directly under the platform at any time. Snooper type vehicles will be utilized on the bridge throughout construction. Spotters will warn of approaching vessels and move the man lift to allow vessels to pass. When construction is completed and all equipment removed, the final vertical clearances for the bridge will be 152-feet for the center 100-feet of the navigation channel. No less than 137-feet of vertical clearance will be available at the channel limits. Vertical clearances are based on IGLD85.

[47/20] [07/22] [02/24]

MI – SAINT CLAIR RIVER – Chart 14852

From June 14, 2024, through **December 20, 2025**, scaffolding that hangs approximately 4-feet below low steel will be installed under the Blue Water Bridge at Mile 39.1 over the St. Clair River. Steady burning yellow lights will warn mariners of the temporary reduction in clearances.

[22/24]

LAKE HURON

*****REVISED*****

MI - LAKE HURON – Saginaw River – Chart 14867

From April 19, through **November 30, 2024**, the Independence Street Bridge at Mile 3.88, over the Saginaw River will have two barges 80-foot by 40-foot or smaller working under the bridge. If needed the barges will move with a 2-hour advance notice. Mariners should provide advance notice for the barges by calling 608-425-0171.

[17/23] [47/23] [17/24]

MI - LAKE HURON – Saginaw River – Chart 14867

From December 1, 2024, through **March 31, 2025**, the Independence Bridge, mile 3.88, over the Saginaw River will be secured to masted navigation. Vessels able to pass under the bridge without an opening may do so at any time. Two 80x40-foot barges will be working under the bridge, and they will move if a 2-hour advance notice is provided by calling 608-425-0171. During the winter the ice will be degraded due to the movement of barges and the ice under the bridge should be considered unsafe for pedestrians or vehicles.

[21/24]

SAINT MARY'S RIVER

LAKE MICHIGAN - EAST

IN - LAKE MICHIGAN – Michigan City – Chart 14926

From 2130 to 2230 on **August 3, 2024**, the Franklin Street Bridge at Mile 0.50 over Trail Creek will be secured to masted navigation in conjunction with the Grand Prix Boat Parade. Vessels able to pass under the bridge without an opening may do so at any time.

[21/24]

MI - LAKE MICHIGAN – Grand Haven – Chart 14933

From June 3 through **June 30, 2024**, between the hours of 0700 and 1600, Monday through Friday, a 20-foot by 8-foot barge will be working under the U.S. Route 31 Bridge at Mile 2.89, over the Grand River. The barge will monitor VHF-FM Marine Channel 16 and will move as needed to accommodate vessels traffic. The opening schedule of the bridge will not be affected.

[22/24]

MI - LAKE MICHIGAN – St Joseph River – Chart 14930

From July 8 through **August 16, 2024**, between the hours of 0600 and 1800, Monday through Saturday, a 50-foot by 80-foot barge will be performing maintenance to the CSX Railroad Bridge at mile 0.67 over the Saint Joseph River. The barge will move to accommodate vessel traffic if a 2-hour advance notice is provided directly to the barge on VHF-FM Marine Channel 16.

[27/24]

LAKE MICHIGAN – MICHIGAN CITY & INDIANA HARBOR & GARY HARBOR

IL - LAKE MICHIGAN – Indiana Harbor Canal – Chart 14927

From November 2 through **November 17, 2024**, and again from December 7 through **December 21, 2024**, on each Saturday at 0001 through each Sunday at 2359, the Elgin, Joliet, and Eastern Railroad Bridge at Mile 0.68 over the Indiana Harbor Canal will be secured to masted navigation. Vessels able to pass under the bridge without an opening may do so at any time.

[52/23]

LAKE MICHIGAN – CALUMET RIVER & LITTLE CALUMET RIVER

*****REVISED*****

IL - LAKE MICHIGAN – Calumet Harbor – Chart 14927

From September 7, 2023, through **December 9, 2024**, scaffolding will be installed under the Indiana Avenue Bridge at Mile 10.80 (CORPS MILE 322.3) over the Little Calumet River that hangs approximately 1-foot below low steel.

[34/23] [19/24]

IL - LAKE MICHIGAN – Calumet Harbor – Chart 14927

The Coast Guard has received a report that the lights on the Norfolk Southern Railroad Bridge at Mile 12.49 over the Little Calumet River are extinguished.

[27/24]

CHICAGO RIVER – MAIN RIVER CHANNEL, NORTH BRANCH, NORTH SHORE CHANNEL, AND SOUTH BRANCH AND SOUTH FORK OF SOUTH BRANCH

IL - LAKE MICHIGAN – Chicago Harbor – Chart 14927

From March 18 through **July 31, 2024**, between the hours of 0600 and 1800 Monday through Saturday, a 125-foot by 80-foot barge will be working under the Franklin-Orleans Street Bridge at Mile 1.47 (325.7 CORPS MILE) over the Main Branch of the Chicago River. The barge will move if provided a 1-hour advance notice directly to the barge.

[09/24]

IL - LAKE MICHIGAN – Chicago Harbor – Chart 14927

From July 22 through **September 20, 2024**, between the hours of 0600 and 1800, Monday through Saturday a 30-foot Harcon will be inspecting the following groups of bridges in Chicago and Calumet Harbors: 95th Street Bridge at Mile 1.09 (CORPS MILE 332.1) to the Indiana Avenue Bridge at Mile 10.80 (CORPS MILE 322.3) over the Calumet and Little Calumet Rivers, the South Western Avenue Bridge at Mile 6.7 (CORPS MILE 320.6) and the South Cicero Avenue Bridge at Mile 10.0 (CORPS MILE 317.3) over the Chicago Sanitary and Ship Canal and All bridges over the Chicago River including all its branches.

[20/24]

IL - LAKE MICHIGAN – Chicago Harbor – Chart 14927

On July 23, 2024, between the hours of 0900 and 1430 inspectors will use Snooper trucks under the Eisenhower Expressway Bridge at Mile 2.35 (CORPS MILE 324.8) over the South Branch of the Chicago River. Spotters will warn of approaching vessels and move the man lift and allow vessels to pass.

[29/24]

CALUMET SAG CHANNEL

*****REVISED*****

IL - LAKE MICHIGAN – Calumet-SAG Channel – Chart 14927

From February 20, 2024, through **November 1, 2024**, scaffolding that hangs approximately 6-feet below low steel will be installed under one half of the 127th Street Bridge at Mile 18.81 (CORPS MILE 314.2) over the Calumet-SAG Channel. A 40-foot by 50-foot barge will be used at the bridge and will move if provided a 30-minute advance notice of arrival on VHF-FM marine Channel 16.

[03/24] [04/24] [10/24]

IL - LAKE MICHIGAN – Calumet-SAG Channel – Chart 14927

From June 28 through **July 17, 2024**, daily and again from October 16, through November 6, 2024, daily, Contractors will utilize snooper vehicles under the Northern Illinois Toll Highway Bridge at Mile 17.35 (CORPS MILE 315.6), over the Calumet-SAG. Spotters will warn of approaching vessels and move the man lift to allow vessels to pass.

[25/24]

IL - LAKE MICHIGAN – Calumet-SAG Channel – Chart 14927

From July 25 through **July 26, 2024**, between the hours of 0900 and 1500 each day inspectors will utilize snooper trucks under the IL-7 Southwest Highway Bridge at Mile 22.25 (CORPS MILE 310.7) over the Calumet – SAG Channel. Spotters will warn of approaching vessels and move the man lift to allow vessels to pass.

[29/24]

CHICAGO SANITARY AND SHIP CANAL, KANKAKEE RIVER & ROCK RIVER

(Lake Michigan to Mile 36.2/291.1)

*****REVISED*****

IL - LAKE MICHIGAN – Chicago Sanitary and Ship Canal – Chart 14927

From January 15, through **August 31, 2025**, scaffolding will be installed that hangs approximately 3-feet below low steel of the South-Central Avenue Bridge at mile 11.1 (CORPS MILE 316.2) over the Chicago Sanitary and Ship Canal.

[03/24] [23/24]

IL - LAKE MICHIGAN – Chicago Sanitary and Ship Canal – Chart 14927

On **July 24, 2024**, between the hours of 0900 and 1400, inspectors will utilize Snooper trucks under the South Harlem Avenue Bridge at Mile 13.3 (CORPS MILE 314.0) over the Chicago Sanitary and Ship Canal. Spotters will warn of approaching vessels and move the man lift to allow vessels to pass.

[29/24]

LAKE MICHIGAN – WEST

WI - LAKE MICHIGAN – Milwaukee Harbor – Chart 14924

From March 25 through **August 30, 2024**, between the hours of 0700 and 1600, Monday through Friday, two barges 70-feet by 50-feet or smaller will be painting the Holton Street Bridge, mile 2.84, over the Milwaukee River. The barges will move to accommodate vessels if a 2-hour advance notice is provided by calling 262-366-5121.

[11/24]

WI - LAKE MICHIGAN – Manitowoc Harbor – Chart 14922

From May 30, 2024, through **September 10, 2024**, The Eighth Street Bridge, mile 0.29 and the Tenth Street Bridge, mile 0.43, over the Manitowoc River at Manitowoc, Wisconsin shall open on signal, except that from 0700 to 0800 and 1100 to Noon. and again from 1600 to 1700 weekdays (except Federal Holidays), the bridges do not need to open for vessels. From 2200 to 0400 daily the bridges will open on signal if provided a 2-hour advance notice of arrival from vessels by calling 920-686-6910. The Eighth Street Bridge, mile 0.29 will be operated remotely by the Tenth Street Bridge Drawtender. During this test deviation comments will be received by emailing lee.d.soule@uscg.mil.

[22/24]

*****REVISED*****

WI - LAKE MICHIGAN – Milwaukee Harbor – Chart 14924

From July 22, 2024, through **October 31, 2024**, one bridge leaf of the Cherry Street Bridge at Mile 2.29 over the Milwaukee River will be secured to masted navigation while the other bridge leaf operates normally for the passage of vessels. From November 1, 2024, through April 1, 2025, both leaves will be secured to masted navigation. Vessels able to pass under the bridge without an opening may do so at any time. Between the hours of 0600 and 1700, Monday through Saturday, three barges, 60-foot by 80-foot or smaller will be working at the bridge, the barges will monitor VHF-FM Marine Channel 16 and move if a 3-hour advance notice is provided. Mariners may also provide advance notice by radio or by calling 312-735-1639.

[24/24] [29/24]

LAKE MICHIGAN – Sturgeon Bay Ship Canal – Green Bay – Fox River – Wolf River

WI - LAKE MICHIGAN – Green Bay – Chart 14918

From December 1, 2026, through **March 31, 2027**, the Tilleman Memorial Bridge at mile 2.27 over the Fox River will be secured to masted navigation. Vessels able to pass under the bridge without an opening may do so at any time.

[49/23]

*****REVISED*****

WI - LAKE MICHIGAN – Fox River – Chart 14916

from October 8, 2026, through **April 8, 2027**, the Wisconsin Street Bridge at mile 56.72 over the Fox River will be secured to masted navigation and scaffolding that hangs approximately 4-feet will be installed under the bridge. Vessels able to pass under the bridge safely, without an opening may do so at any time.

[02/24] [03/24]

WI - LAKE MICHIGAN – Fox River – Chart 14918

From September 9, through **October 3, 2024**, between the hours of 0700 and 1700, every weekday, inspectors will be using Snooper vehicles under the Tower Drive / Leo Frigo Bridge at mile 0.41 over the Fox River. Spotters will warn of approaching vessels and move the manlift to allow vessels to pass.

[27/24]

WI - LAKE MICHIGAN – Fox River – Chart 14918

On **September 28, 2024**, between the hours of 0800 and 1000 the Racine Street Bridge at Mile 37.91 over the Fox River will be secured to masted navigation in conjunction with the 44th Annual Grunski Runski. Vessels able to pass under the bridge without an opening may do so at any time.

[29/24]

LAKE SUPERIOR

WI - LAKE SUPERIOR – Duluth-Superior Harbor – Chart 14975

From August 5 through **August 9, 2024**, between the hours of 0700 to 1700, Daily, Inspectors will use Unmanned Aerial Vehicles and snooper trucks under the Bong Bridge at mile 5.20 over the St. Louis Bay and River. Spotters will warn of approaching vessels and move the equipment to allow vessels to pass.

[19/24]

WI - LAKE SUPERIOR – Duluth-Superior Harbor

From July 8 through **July 22, 2024**, between the hours of 0900 and 1500 each day, inspectors will utilize snooper trucks under the John A. Blatnik, I-535 Bridge at mile 2.74 over the St. Louis Bay and River. Spotters will warn of approaching vessels and move the man lift to allow vessels to pass.

[23/24]

RAINY LAKE, RAINY RIVER, LAKE OF THE WOODS, WISCONSIN RIVER, MISSISSIPPI RIVER, & RED RIVER OF THE NORTH

(Revised 04/23) NINTH DISTRICT DRAWBRIDGE SIGNALS OR OPERATIONAL DELAYS FORM

TO: Commander (dpb)
Ninth Coast Guard District
1240 E. 9th Street – Room 2047b
Cleveland, Ohio 44199-2060
Phone: (216) 902-6087
Fax: (216) 902-6088
E-Mail: William.B.Stanifer@uscg.mil, Lee.D.Soule@uscg.mil, and Michael.O.Walker2@uscg.mil

DATE: _____
NOTE: Reports of Delay will be processed only when all items are fully addressed and reports submitted within 15 days of reported delay / difficulty. Attach additional sheets if necessary.

CONFIDENTIALITY: Please check here if you wish to keep names of vessels and persons confidential

1. DATE OF DELAY: _____ 2. VESSEL NAME: _____ 3. INBOUND OUTBOUND

(***NOTE: You must provide the following from Coast Pilot 6.***)

4. BRIDGE NAME _____ 5. WATERWAY _____

6. MILE MARKER _____

7. WHAT TIME DID YOU ARRIVE AT THE BRIDGE? _____ 8. DID YOU SIGNAL FOR AN OPENING AT THAT TIME? Y N

9. HOW DID YOU SIGNAL? Sound signal (Whistle, horn, megaphone, hailer, etc.) _____

(Check all that apply) Visual signal (Flag or Light) _____

Radio telephone (Specify Frequency) _____

10. WHEN DID THE BRIDGE REPLY? _____ 11. WHAT DID THE DRAWTENDER SAY? _____

12. DID YOU COMMUNICATE WITH THE BRIDGE AFTER YOUR ARRIVAL? PLEASE PROVIDE DETAILS INCLUDING TIMES, WHAT YOU SAID, AND WHAT THE BRIDGE SAID? _____

13. WHAT TIME DID THE BRIDGE OPEN? _____ 14. WHAT TIME DID YOU START THROUGH? _____

15. WHAT TIME DID YOU CLEAR? _____ 16. WHAT ACTIONS DID YOU TAKE WHILE YOU WAITED FOR THE BRIDGE TO OPEN (e.g. tie up, hold position, use thrusters, return to dock)? _____

17. DESCRIBE ANY WEATHER OR WATER CONDITIONS THAT AFFECTED MANUEVERABILITY WHILE YOU WAITED? _____

18. DESCRIBE WHETHER ANY PEDESTRIANS, VEHICLES, OR TRAINS WERE STOPPED ON THE BRIDGE OR CROSSING THE BRIDGE? PROVIDE AS MUCH DETAIL AS POSSIBLE. _____

19. PROVIDE ANY ADDITIONAL INFORMATION YOU THINK WOULD BE HELPFUL? _____

20. YOUR NAME, E-MAIL, PHONE NUMBER, AND ADDRESS: _____

SIGNATURE OF REPORTING SOURCE



DNR
MICHIGAN DEPARTMENT OF NATURAL RESOURCES

INTEROFFICE COMMUNICATION

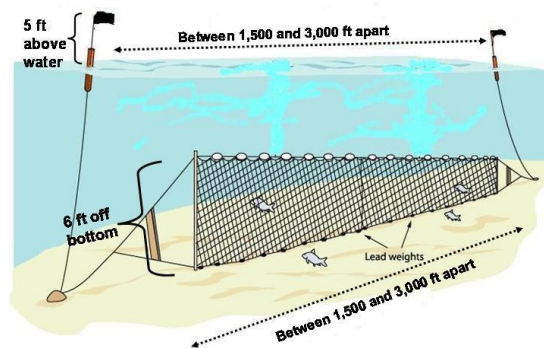
14 June 2024

TO: Natural resource agency personnel and mariners operating on Lake Superior

FROM: Shawn P. Sitar, Science Officer, RV Lake Char, Marquette Fisheries Research Station

SUBJECT: RV Lake Char operations in Lake Superior 17 June-30 August

This is a note to inform you that we will be conducting a deepwater lake trout gill net survey aboard the Research Vessel *Lake Char* in Lake Superior starting 17 June April and should finish by 05 July. We also will be conducting our summer lake trout gill net survey in nearshore waters starting 29 July and should complete by 30 August. We will be setting bottom set gill nets that are 1,500-3,000 ft long, extend about 6 feet from the bottom and are set overnight. Our deepwater sampling stations will be at all depths from about 100 ft to 1,320 ft between Shot Point (Marquette) to the Munising Area and will be within a few miles from shore to 30 miles offshore. Our summer survey will be within a few miles of shore at depths between 90 and 250 ft. Our nets are marked with black and orange flagged staff buoys that are labeled with our agency identification.

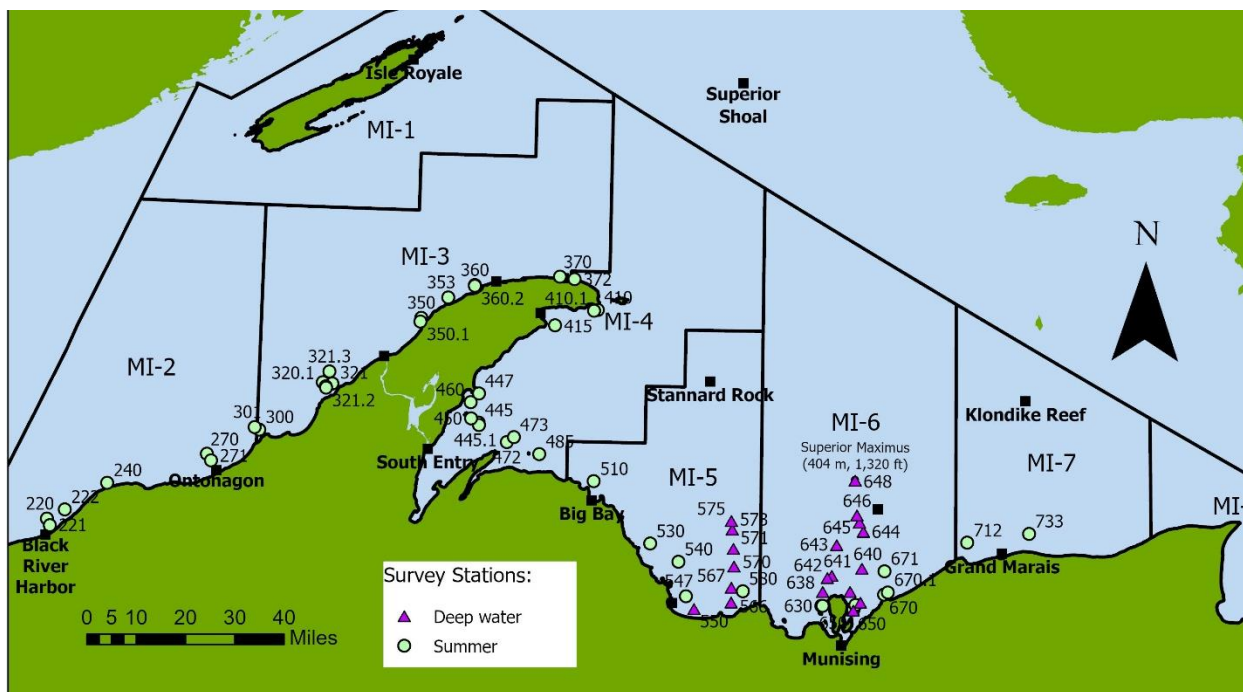


We will be conducting our surveys in the following areas of Lake Superior: Deepwater survey: between Shot Pt (Marquette) and Munising Bay/Pictured Rocks area. Summer Survey: west of

Keweenaw Peninsula from Black River Harbor to Copper Harbor; outer Keweenaw Bay from Bete Grise to the Huron Islands; Big Bay; Marquette; Au Train, Munising, and Grand Marais.

Attached is the cruise schedule, map, and sampling station coordinates for the lake trout survey. Note that weather conditions may delay the sampling dates. Please provide copies of this cruise schedule to all pertinent personnel. Please note that we can be reached via MIDNR 800 MHz Radios on our primary radio channel on Zone B, FIMARQT, or via marine radio channel 16. Our radio call sign is *RV Lake Char*. We can also be reached on the vessel via cell phone number 906-458-6925.

If you have any questions regarding our sampling schedule, please feel free to contact me by e-mail at sitars@michigan.gov or by cell phone at (906)-235-1581. Thank you for your cooperation.



RV Lake Char Deepwater and Summer Survey sampling stations June-August 2024.

2024 Deepwater lake trout survey schedule for RV Lake Char, Marquette Fisheries Research Station (MFRS), Michigan Department of Natural Resources.

| Dates | Column2 | Station_no | site | latitude | longitude |
|--------------|----------------|-------------------|------------------------------------|-----------------|------------------|
| 06/17 | - 06/18/2024 | 642 | FAT 6-6 | 46° 36.8" N | 86° 42.82" W |
| 06/17 | - 06/18/2024 | 638 | FAT 6-5A | 46° 34.35" N | 86° 43.98" W |
| 06/20 | - 06/21/2024 | 644 | FAT 6-8 | 46° 45" N | 86° 33.7" W |
| 06/20 | - 06/21/2024 | 643 | FAT 6-7 | 46° 42.6" N | 86° 40.5" W |
| 06/24 | - 06/25/2024 | 650 | Trout Point (Trout Bay)/ FAT 6-1 | 46° 31.11" N | 86° 36.13" W |
| 06/24 | - 06/25/2024 | 639 | FAT 6-3, Grand Island, NE | 46° 34.4" N | 86° 37" W |
| 06/25 | - 06/26/2024 | 640 | FAT 6-4 | 46° 38.5" N | 86° 34" W |
| 06/25 | - 06/26/2024 | 645 | FAT 6-9 | 46° 46.6" N | 86° 34.7" W |
| 06/25 | - 06/26/2024 | 648 | FAT 6-12, Superior Maximus | 46° 54" N | 86° 35.9" W |
| 06/26 | - 06/27/2024 | 647 | FAT-6-11 | 46° 50" N | 86° 35.37" W |
| 06/26 | - 06/27/2024 | 652 | Trout Reef B-Brey (north)/ FAT 6-2 | 46° 32.51" N | 86° 34.33" W |
| 06/26 | - 06/27/2024 | 646 | FAT 6-10 | 46° 47.87" N | 86° 35.37" W |
| 06/27 | - 06/28/2024 | 566 | Fat 5-2, Shot Point | 46° 32.3" N | 87° 7.33" W |
| 06/27 | - 06/28/2024 | 567 | Fat 5-3, Shot Point | 46° 34.9" N | 87° 7.33" W |
| 07/01 | - 07/02/2024 | 573 | Fat 5-9, Shot Point | 46° 45.15" N | 87° 7.29" W |
| 07/01 | - 07/02/2024 | 575 | Fat 5-11, Shot Point | 46° 46.65" N | 87° 7.55" W |
| 07/02 | - 07/03/2024 | 570 | Fat 5-6, Shot Point | 46° 38.65" N | 87° 6.72" W |
| 07/02 | - 08/22/2020 | 571 | Fat 5-7, Shot Point | 46° 41.76" N | 87° 6.93" W |

2024 Summer lake trout survey schedule for RV Lake Char, Marquette Fisheries Research Station (MFRS), Michigan Department of Natural Resources.

| Dates | | Station_no | site | latitude | longitude |
|--------------------|--|------------|---------------------------------|------------|------------|
| 07/29 - 07/30/2024 | | 530 | Garlic Island | 46°42.32"N | 87°28.27"W |
| 07/29 - 07/30/2024 | | 510 | Big Bay Point | 46°53.09"N | 87°43.03"W |
| 07/29 - 07/30/2024 | | 540 | Granite Point (Pinnacle) | 46°39.21"N | 87°20.95"W |
| 07/30 - 07/31/2024 | | 485 | Huron Islands (graded mesh) | 46°57.63"N | 87°57.17"W |
| 07/30 - 07/31/2024 | | 473 | Point Abbaye (out)(graded mesh) | 47°00.50"N | 88°03.86"W |
| 07/31 - 08/01/2024 | | 445 | Halberg's Reef | 47°02.91"N | 88°13.03"W |
| 07/31 - 08/01/2024 | | 447 | Traverse Point | 47°08.02"N | 88°13.18"W |
| 07/31 - 08/01/2024 | | 450 | Traverse Island (south) | 47°03.60"N | 88°15.03"W |
| 08/05 - 08/06/2024 | | 300 | Fourteen Mile Point (in) | 47°00.38"N | 89°09.40"W |
| 08/05 - 08/06/2024 | | 301 | Fourteen Mile Point (out) | 47°00.80"N | 89°10.65"W |
| 08/06 - 08/07/2024 | | 220 | Black River Harbor (out) | 46°43.00"N | 90°02.77"W |
| 08/06 - 08/07/2024 | | 221 | Black River Harbor (in) | 46°41.90"N | 90°01.98"W |
| 08/06 - 08/07/2024 | | 240 | Porcupine Mountains | 46°49.85"N | 89°47.82"W |
| 08/07 - 08/08/2024 | | 270 | Ontonagon (out) | 46°55.75"N | 89°22.57"W |
| 08/07 - 08/08/2024 | | 271 | Ontonagon (in) | 46°54.63"N | 89°21.50"W |
| 08/08 - 08/09/2024 | | 320 | Freda (out) (graded mesh) | 47°09.53"N | 88°52.25"W |
| 08/08 - 08/09/2024 | | 321 | Freda (in) (graded mesh) | 47°09.00"N | 88°51.00"W |
| 08/08 - 08/09/2024 | | 350 | Hills Creek | 47°21.05"N | 88°28.62"W |
| 08/12 - 08/13/2024 | | 360 | Great Sand Bay | 47°27.10"N | 88°15.00"W |
| 08/12 - 08/22/2020 | | 370 | Copper Harbor | 47°29.00"N | 87°52.93"W |
| 08/13 - 08/14/2024 | | 410 | Keystone Bay | 47°23.26"N | 87°42.93"W |
| 08/13 - 08/14/2024 | | 415 | Point Isabelle (South Point) | 47°20.39"N | 87°53.93"W |
| 08/14 - 08/15/2024 | | 580 | Laughing Fish Point | 46°34.19"N | 87°04.39"W |
| 08/19 - 08/20/2024 | | 650 | Trout Point A | 46°32.00"N | 86°35.57"W |
| 08/19 - 08/20/2024 | | 630 | Wood Island (graded mesh) | 46°31.76"N | 86°44.32"W |
| 08/20 - 08/21/2024 | | 670 | Grand Portal Point (in) | 46°33.88"N | 86°28.32"W |
| 08/20 - 08/21/2024 | | 671 | Grand Portal Point (out) | 46°37.96"N | 86°28.22"W |
| 08/21 - 08/22/2024 | | 712 | Au Sable Point | 46°43.02"N | 86°07.04"W |
| 08/21 - 08/22/2024 | | 733 | Perry's Landing (graded mesh) | 46°44.58"N | 85°51.26"W |

2024
GREAT LAKES SINGLEHANDED SOCIETY
46th PORT HURON / 28th CHICAGO TO MACKINAC SOLO CHALLENGE

SAILING INSTRUCTIONS

1. ORGANIZING AUTHORITY

The Great Lakes Singlehanded Society (GLSS) shall be the Organizing Authority of the Challenges.

2. START DATE

The starts of the GLSS Port Huron to Mackinac and Chicago to Mackinac Challenges shall be Saturday, June 22, 2024.

3. RULES

The Challenges shall be governed by the current Racing Rules of Sailing (RRS), the Notice and Conditions of Race and the Sailing Instructions.

4. SKIPPERS

Skippers shall consist of one person who has fulfilled the qualification requirements in the Notice of Race and has been approved by the Great Lakes Singlehanded Society (GLSS) Board of Directors.

5. ELIGIBILITY

5.1 The Challenge is open by invitation of the Great Lakes Singlehanded Society to boats in compliance with:

- (a) The 2024 Notice and Conditions of Race and
- (b) The 2024 Required Equipment List.

5.2 Yachts may optionally fly their national flag of registry and a visiting country courtesy flag if so desired. US Sailing RRS 55 does not apply to the display or signaling of either of these flags for this event.

6. TIME ZONES

6.1 All times shown in the Notice of Race and these Sailing instructions involving pre-Race and on-the-water requirements, including the starts, call-ins and finishing times shall be as follows:

- (a) Competitors in the Challenge(s) originating in Port Huron shall use Eastern Daylight Time (EDT)
- (b) Competitors in the Challenge(s) originating in Chicago shall use Central Daylight Time. (CDT)

6.2 All onshore activities at Mackinac Island shall be expressed in Eastern Daylight Time (EDT)

7. NOTICES TO SKIPPERS

7.1 Prior to the start, Notices to Skippers shall be posted on the Official Notice Boards located on Yacht Scoring website <https://yachtscoring.com/emenu.cfm?eid=15871> and at:

- (a.) The Vintage Tavern, 103 Michigan St., Port Huron, MI, during registration on Friday, June 21, 2024
- (b) The Columbia Yacht Club, 111 N. Lakeshore Drive, Chicago, IL 60601, during registration on Friday, June 21, 2024

7.2 After the start, Notices to Skippers shall be posted on the Official Notice Board of the Great Lakes Singlehanded Society Race Committee located at the Mackinac Island Yacht Club.

8. CHANGES IN SAILING INSTRUCTIONS

Changes in the Sailing Instructions after the Skippers' Meeting shall be broadcast by the Race Committee on VHF Channel 72 prior to the start of the Challenge.

9. THE START

9.1 A complete description of the starting area shall be provided at the Skippers' Meeting.

9.2 Yachts not starting must stay at least 200 yards away from the starting area.

9.3 The Starting Sequence signal shall be made in accordance with RRS 26 except that the warning signal will be given 10 minutes before the starting signal. Starting times, starting sequences and division splits shall be provided at the Skippers' Meeting.

9.4 All Skippers shall check in with the Race Committee via VHF Channel 72 prior to the start

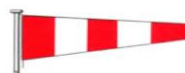
10. START TIME

10.1 The warning signal of the Challenges beginning in Port Huron shall be 9:50 AM (EDT). The start shall be at 10:00 AM (EDT)

10.2 The warning signal of the Challenges beginning in Chicago shall be 8:50 AM (CDT). The start shall be at 9:00 AM (CDT)

11. POSTPONEMENT

Skippers shall be notified of a postponement from the Race Committee with the display of the code shape AP



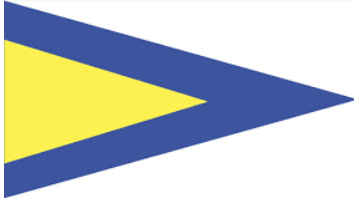
(vertical red and white stripes) accompanied with two sounds

12. RECALLS

12.1 Individual Recalls - Boats on the course side before the start shall be signaled in accordance with RRS 29.1, Flag X (blue cross on white background) with one sound. In addition, the Race Committee shall attempt to notify boats on the course side before the start on VHF Channel 72. Boats failing to return and start properly shall be assessed a 30-minute penalty plus the amount of time started early in lieu of disqualification. Failure to hear a courtesy hail shall not be grounds for redress.



12.2 General Recalls - A general recall for a division shall be made in accordance with RRS 29.3. The Race Committee shall signal a general recall by displaying the first substitute flag (yellow triangle on blue background) and two sounds. The warning signal for a new start for the recalled class shall be made one minute after the first substitute is removed (one sound) and the starts for any succeeding divisions shall follow the new start.



2024 3/7

13 THE STARTING AREA

13.1 Port Huron Challenges: The starting line shall be approximately 1.5 miles North of SARNIA YACHT CLUB at the "M" mark which is located at 43 01.306 N 82 23.598 W. The line shall be between the mark on the west end of the starting line and the Race Committee boat located at the east end of the starting line.

13.2 Chicago Challenges: The starting line shall be east of the south end of the Chicago Harbor outer break wall. The line shall be between a point on the south end of the Chicago Harbor outer break wall and the Race Committee boat located at the east end of the starting line.

14. THE COURSES AND MARKS

14.1 PORT HURON CHALLENGE:

- (a) Start at Port Huron as stated in 13.1 to Finish at Mackinac Island
- (b) Boats shall perform a navigational rounding of the Goderich mark (43 43.3 N and 81 46.2 W) leaving it to port before proceeding on toward Mackinac Island. A full description of the mark shall be provided at the Skipper's meeting
- (c) Skippers shall record in the boat's log and on the Rounding Report, provided at the Skippers Meeting, the following information: the time of the Goderich rounding, the identity and time of rounding of both the boats ahead and astern if known. Boats shall confirm the identity of the boat ahead and astern by **VHF Channel 72** if possible.
- (d) Thunder Bay Island and Bois Blanc Island are marks of the course and shall be left to port.
- (e) Boats shall pass through the Finish Line at Mackinac Island, confirm their time with the Race Committee. The time shall be entered on the Rounding Report.

14.2 CHICAGO CHALLENGE:

- (a) Start at Chicago to Finish at Mackinac Island.
- (b) Boats shall leave Gray's Reef Passage Channel Lighted Buoy 7 (LL No. 17780) to starboard.
- (c) Boats shall leave New Shoal Lighted Bell Buoy 3 (LL No. 17745) to starboard. A full description of the Gray's Reef mark shall be provided at the Skippers' Meeting
- (d) Skippers shall record in the boat's log and on the Rounding Report, provided at the Skippers Meeting, the following information: the time of rounding, the identity and time of rounding of both the boats ahead and astern if known. Boats shall confirm the identity of the boats ahead and astern by **VHF Channel 72** if possible.
- (e) Boats shall pass under one of the three center spans of the Mackinac Bridge
- (f) Boats shall leave South Graham Shoal Buoy (LL No. 12635) to port

15. The Finish

15.1 Finish Line: The finish line shall be between a line, determined by the Race Director, on the window of the Mackinac Island Yacht Club and Round Island Lighted Buoy 3 (LL No. 12575) (45° 50 27.447N 084° 36 31.090W). A diagram of the finish line Mackinac Island shall be provided at the Skippers' Meeting.

15.2 Due to a common finish line, Skippers shall monitor VHF Channel 72 and to be aware of boats finishing from an opposing direction. A Skipper already finished shall **STAY CLEAR** of other boats that have not finished.

15.3 Finishing Procedure:

- (a) Skippers shall notify the Race Committee at Mackinac Island via VHF Channel 72 approximately **one hour** before the estimated time of finishing the Challenge. After crossing the finish line, the Skippers shall verify their finish with the Race Committee on VHF Channel 72. A boat may be deemed to have not finished without acknowledgement by the Race Committee.
- (b) Skippers shall complete a Finish Report which includes the boat's finishing time and the boat finishing ahead and/or behind, if known.
- (c) During hours of darkness, a boat shall illuminate its sail numbers for identification by the Race Committee.

15.4 **Check-in.** Within two (2) hours after finishing the course and Inspection, Skippers must report to the Race Committee headquarters at the Mackinac Island Yacht Club for check in. This includes signing the Skippers' Register, submitting the Radio Log, the Rounding Report and Finish Report. Any delay after the two-hour time limit will be subject to penalty.

16. TIME LIMIT

Any Skipper finishing after 1200 hours, Wednesday, June 26, 2024, shall submit all the required forms and petition for an approval of their finish by the GLSS Board of Directors.

17. INSPECTION

Upon the completion of the Challenge, each Skipper's boat may be subject to an inspection to verify compliance with the Required Equipment rule. A boat failing to comply with this Section 17 may be assessed a time penalty or be disqualified and not listed as an official finisher.

18. PROTESTS AND ALTERNATIVE PENALTIES

18.1 A boat protesting another boat shall do so in accordance with RRS 61 within four hours of the finish of the protesting boat. A protest by a boat that has abandoned the Challenge must be received or postmarked within 24 hours of arriving at a harbor of refuge.

18.2 Notice of intention to protest shall be given to the Race Committee when checking in. The Skipper of a protesting boat which finishes the Challenge must not leave Mackinac Island without notifying the Race Committee, failing which; the protest may be decided against such Skipper.

18.3 Protests should be submitted on a U.S. Sailing Protest Form, which shall be made available at the Race Committee Headquarters on Mackinac Island and is available at <https://www.ussailing.org/resource-library/us-sailing-hearing-request-form/>

18.4 Protests shall be heard as soon as practicable thereafter and the date and time shall be posted on the Official Notice Board at the Mackinac Island Race Headquarters.

18.5 Penalties imposed by the Protest Committee may include disqualification or in lieu thereof, the Protest Committee may penalize a boat by having its corrected time increased.

19. SCORING

19.1 Each boat that completes the Challenge shall be ranked by its corrected time in its division or class.

19.2 Corrected times shall be calculated on a time-on-distance basis using a course length of 230 nautical miles for the Port Huron start and 287 nautical miles for the Chicago start.

20. AWARDS

20.1 Skippers and their guests are invited to attend the Awards Luncheon to be held at the Mackinac Island Yacht Club at 1200 hours on Wednesday, June 26, 2024.

20.2 All Skippers who complete a Challenge within these Sailing Instructions and the Notice of Race shall be awarded a commemorative medallion for each Challenge completed acknowledging this achievement as set forth in the Notice of Race.

20.3 Flags shall be distributed as set forth in the Notice of Race.

21. RESPONSIBILITY TO REPORT

21.1 Any Skipper observing infractions of the Notice of Race and these Sailing Instructions is expected to report such infractions to the Race Committee.

21.2 At the conclusion of the Challenge, Skippers may be required to temporarily surrender their boat's log for inspection by the Race Committee.

21.3 A Skipper shall attempt to notify the Race Committee if it is apparent that he/she shall finish later than 1200 hours on Wednesday, June 26, 2024.

21.4 Should a Skipper withdraw from the Challenge; it is the responsibility of the Skipper to notify the Race Committee on Mackinac Island at the earliest opportunity. Phone numbers shall be provided at the Skippers' Meeting.

21.5 In the event that a Skipper temporarily anchors or lays to for more than 8 hours, the skipper must attempt to notify the Race Committee or another Skipper by VHF or telephone.

21.6 Mandatory Radio Log and Call-in Skippers shall attempt to make radio contact with other Skippers on VHF Channel 72 every 6 hours after the start of the challenge. Skippers missing a call-in shall be subject to penalty. Channel 72 is to be monitored for 30 minutes at the appropriate times. Radio contact with other Skippers is to be logged noting time, position, and other pertinent information. A form for this Radio Log shall be provided at the Skippers' meeting. Skippers shall turn in the log to the Race Committee on Mackinac Island within two (2) hours of finishing the Challenge and clearing docking. Skippers shall maintain a boat's log noting position and conditions with entries recommended at least every 3 hours.

22. SPECIAL AIDS

22.1 The use of electronic navigational aids (i.e., GPS, Radar, and LORAN) is permissible.

22.2 The use of powered winches and powered winch drivers is permitted.

23. OUTSIDE ASSISTANCE

23.1 The RRS 41 shall apply and include the following:

23.2 A boat may anchor or tie to a dock.

23.3 During the Challenge including when a boat is anchored or moored, the following is specifically PROHIBITED:

- (a) Any prearranged transmissions for the advantage of the individual Skippers.
- (b) Communications with non-participants for the purpose of a position fix.
- (c) Outside physical assistance, an example of which is to free a grounded boat.**
- (d) Materials, equipment or supplies of any sort shall not be taken aboard the boat.
- (e) No materials shall leave the boat except that accidentally fall overboard or are supplied to others in distress.

23.4 Should a Skipper feel that it is necessary to **temporarily** pull out of the Challenge, he/she shall continue to be as self-sufficient as they if still on the course and remain on the boat except to attend to docking. The skipper is **REQUIRED** to notify the race committee of his/her withdrawal and intent to re-enter the Challenge. The skipper will notify the race committee of his/her re-entry into the challenge PRIOR TO RE-ENTRY. The skipper will not be scored until an appeal is approved by the GLSS Board of Directors. The appeal should contain, at a minimum, the following: a written detailed description of the cause of the temporary withdrawal, corrective action(s) taken, and a time line. The Skipper shall make every effort to minimize motor use, and to minimize the time spent in a harbor. These details will be taken into consideration when the Board reviews the finish.

24. PROPULSION

24.1 RRS 42 shall apply as except the following:

- (a) A boat that has not yet started may use engine propulsion to proceed to no closer 200 yards from the starting area after the preparatory signal for its class.
- (b) Engine propulsion may be used to avoid a collision with commercial traffic providing that such usage does not advance the boat's position from its original position just prior to the hazardous incident.
- (c) A boat may temporarily pull out of the Challenge. In order to safely enter or leave a harbor, motoring from a minimum safe distance for the conditions is acceptable. Any motoring that would be necessary must not improve the Skipper's position.
- (d) An engine may be used for generating electrical power provided that such use does not advance the boat's position.
- (e) All uses of the engine for propulsion must be logged and reported to the Race Committee when registering after the Challenge.
- (f) The use of engine power to free a grounded vessel shall be permitted if its use does not advance the vessel's position.
- (g) Engine propulsion may be used to clear seaweed or fish netting from the keel, rudder, or propeller if the use does not improve the boat's position.

25. SEAMANSHIP

25.1 The Great Lakes Singlehanded Society stresses that the spirit of the Challenge is to complete a safe and seamanlike passage. The fact that an event is being held does not condone unseamanlike conduct in fog, traffic, or conditions of fatigue.

25.2 The Race Committee stresses Rule 5 of the Inland Rules of the Road: **"EVERY VESSEL SHALL, AT ALL TIMES, MAINTAIN A PROPER LOOKOUT BY SIGHT AS WELL AS BY ALL AVAILABLE MEANS APPROPRIATE IN THE PREVAILING CIRCUMSTANCES AND CONDITIONS AS TO MAKE FULL APPRAISAL OF THE SITUATION AND THE RISK OF COLLISION."**

26. SPOT TRACKING

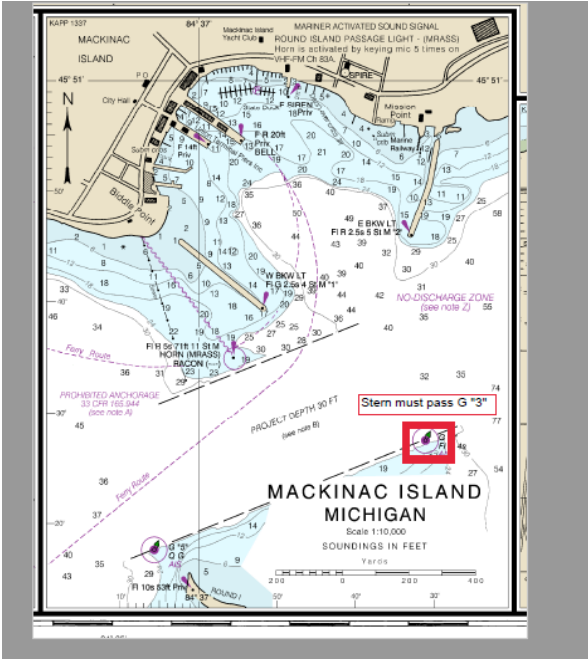
A SPOT or other Messaging and Tracking device using satellite communications capable of sending a manual "OK" signal and set to a ping rate of no less than every 30 minutes is phased in as of 2024
For New Participants and Existing GLSS members this is **MANDATORY** as of 2024.

These devices must be registered with proper contact information to be useful and a contact shall be provided for all events.

.

27. AIS

AIS transponder identifying the yacht's position, course and speed to other craft is **MANDATORY** for 2024, except for solo sailors who have already completed at least 20 GLSS Solo Challenges.



Solo Mac Finish Line



DEPARTMENT OF HOMELAND SECURITY
U.S. COAST GUARD

PERMIT FOR MARINE EVENT

Date Approved
03/06/2024

| | | |
|--|---|----------------------|
| Name of Event | Location | Date of Event |
| Chicago-Mackinac Island Solo Challenge | Chicago to Mackinac Island | 06/22/2024 |
| Sponsoring Organization | Name of Representative (Last, First, MI) | Title |
| Great Lakes Singlehanded Society | Reichling, Elisabeth | Race Director |

Your application for the following event is approved. Special services to be rendered by the Coast Guard are listed. You are reminded that your organization is primarily responsible for safety in the regatta area and that this permit does not relieve you of such responsibility. Participants shall be adequately briefed and their boats equipped as required by law. A permit may also be required by a state, county or municipal agency. This authorization grants no exemption from state or local ordinances. In the event of any change in the information furnished in your application you will notify this office.


- | | |
|--|---|
| <p><input checked="" type="checkbox"/> There will not be a Special Local Regulation issued. No restriction is placed on the use of any navigable waters by other parties. Your event shall not obstruct any channel or normal shipping lane, or interfere with any aid to navigation. The Committeeman in Charge shall control participants to prevent conditions hazardous to other craft in the area.</p> <p><input type="checkbox"/> There will be a Special Local Regulation issued establishing a restricted area and other controls. You will be provided a copy for guidance. The Committeeman in Charge shall control participants to prevent conditions hazardous to other craft in the area.</p> | <p><input checked="" type="checkbox"/> There will be a Local Notice to Mariners issued to inform maritime interests and solicit their cooperation.</p> <p><input checked="" type="checkbox"/> There will not be a Regatta Patrol assigned by the Coast Guard.</p> <p><input type="checkbox"/> There will be a Regatta Patrol assigned by the Coast Guard. The attached instruction for Patrol Commanders outlines their responsibility and authority. You should work out specific details with the Patrol Commander.</p> <p><input checked="" type="checkbox"/> Additional safety equipment is stipulated below.</p> |
|--|---|

The sponsor anticipates approximately 30 participating vessels of 26' to 50' feet in length. Sailing vessels will monitor both CH 16 and 72. Reference application for event specifics. Race Director's cell phone is (269) 330-8868 and email nchawk3@yahoo.com. The sponsoring organization must comply with all existing federal, state, local laws and other requirements that may impact their ability to hold their event as proposed. A reminder of two Inland Rules of the Road: 1. Compliance with Rule 9: in all narrow channels, a vessel of less than 20 meters in length or a sailing vessel shall not impede the passage of a vessel that can safely navigate only within a narrow channel or fairway. 2. In the event of restricted visibility, race participants will navigate in accordance with Rule 35 of the Inland Navigation Rules as well as all other pertinent 'Rules of the Road' applicable to the current conditions. As the event sponsor, you remain responsible for the overall safety of this event. This may include providing instructions to the participants, verifying crew qualifications, conducting equipment inspections, providing rescue and first aid facilities, and controlling obstructions or menaces to navigation as applicable. You are also responsible for obtaining any additional permits from other national federal, state, or local authorities that may be required. The Ninth Coast Guard District strongly recommends that all participants wear either an inherently buoyant or inflatable Personal Flotation Device (PFD) with an affixed, registered Personal Locator Beacon (PLB) whenever underway for the duration of this event. Enclosed is a copy of the Ninth Coast Guard District's "Cardinal Points" for Regattas. This document provides information concerning how to notify the Coast Guard should a distress situation develop during your event.

Jonathan Tripi

Jonathan R. Tripi
LTJG, U.S. Coast Guard
Ninth Coast Guard District

Reset



2.25 sm to
Goderich harbor
entrance

45° to entrance

43°43.3N 81°46.2W

2.3 sm 90° to shoreline

© 2018 Google
Image NOAA

Image © 2019 DigitalGlobe

DEPARTMENT OF HOMELAND SECURITY
U.S. COAST GUARD

PERMIT FOR MARINE EVENT

Date Approved
03/06/2024

| | | |
|--|--|-----------------------------|
| Name of Event Port Huron-Mackinac Island Solo Challenge | Location Port Huron to Mackinac Island | Date of Event 06/22/2024 |
| Sponsoring Organization Great Lakes Singlehanded Society | Name of Representative (Last, First, MI) Reichling, Elisabeth | Title Race Director |

Your application for the following event is approved. Special services to be rendered by the Coast Guard are listed. You are reminded that your organization is primarily responsible for safety in the regatta area and that this permit does not relieve you of such responsibility. Participants shall be adequately briefed and their boats equipped as required by law. A permit may also be required by a state, county or municipal agency. This authorization grants no exemption from state or local ordinances. In the event of any change in the information furnished in your application you will notify this office.

- | | |
|--|--|
| <input checked="" type="checkbox"/> There will not be a Special Local Regulation issued. No restriction is placed on the use of any navigable waters by other parties. Your event shall not obstruct any channel or normal shipping lane, or interfere with any aid to navigation. The Committeeman in Charge shall control participants to prevent conditions hazardous to other craft in the area. | <input checked="" type="checkbox"/> There will be a Local Notice to Mariners issued to inform maritime interests and solicit their cooperation. |
| <input type="checkbox"/> There will be a Special Local Regulation issued establishing a restricted area and other controls. You will be provided a copy for guidance. The Committeeman in Charge shall control participants to prevent conditions hazardous to other craft in the area. | <input checked="" type="checkbox"/> There will not be a Regatta Patrol assigned by the Coast Guard. |
| | <input type="checkbox"/> There will be a Regatta Patrol assigned by the Coast Guard. The attached instruction for Patrol Commanders outlines their responsibility and authority. You should work out specific details with the Patrol Commander. |
| | <input checked="" type="checkbox"/> Additional safety equipment is stipulated below. |

The sponsor anticipates approximately 30 participating vessels of 26' to 50' feet in length. Sailing vessels will monitor both CH 16 and 72. Reference application for event specifics. Race Director's cell phone is (269) 930-8868 and email nthatk9@yahoo.com. The sponsoring organization must comply with all existing federal, state, local laws and other requirements that may impact their ability to hold their event as proposed. A reminder of two Inland Rules of the Road: 1. Compliance with Rule 9: in all narrow channels, a vessel of less than 20 meters in length or a sailing vessel shall not impede the passage of a vessel that can safely navigate only within a narrow channel or fairway. 2. In the event of restricted visibility, race participants will navigate in accordance with Rule 35 of the Inland Navigation Rules as well as all other pertinent 'Rules of the Road' applicable to the current conditions. As the event sponsor, you remain responsible for the overall safety of this event. This may include providing instructions to the participants, verifying crew qualifications, conducting equipment inspections, providing rescue and first aid facilities, and controlling obstructions or menaces to navigation as applicable. You are also responsible for obtaining any additional permits from other national, federal, state, or local authorities that may be required. The Ninth Coast Guard District strongly recommends that all participants wear either an inherently buoyant or inflatable Personal Flotation Device (PFD) with an affixed, registered Personal Locator Beacon (PLB) whenever underway for the duration of this event. Enclosed is a copy of the Ninth Coast Guard District's "Cardinal Points" for Regattas. This document provides information concerning how to notify the Coast Guard should a distress situation develop during your event.

Jonathan Tripi

Jonathan R. Tripi
LTJG, U.S. Coast Guard
Ninth Coast Guard District

Reset

DEPARTMENT OF HOMELAND SECURITY

Coast Guard

33 CFR Part 165

[Docket Number USCG–2024–0222]

RIN 1625–AA00

Safety Zone; 2024 Duluth Air Spectacular, Lake Superior, Duluth, MN

AGENCY: Coast Guard, DHS.

ACTION: Temporary final rule.

SUMMARY: The Coast Guard is establishing a temporary safety zone for certain waters of the Lake Superior. This action is necessary to provide for the safety of life on these navigable waters near Canal Park in Duluth, MN during an air show on July 31, 2024. This rule prohibits persons and vessels from being in the safety zone unless authorized by the Captain of the Port Marine Safety Unit Duluth or a designated representative.

DATES: This rule is effective from 12 p.m. through 9 p.m. on July 31, 2024.

ADDRESSES: To view documents mentioned in this preamble as being available in the docket, go to <https://www.regulations.gov>, type USCG–2024–0222 in the search box and click “Search.” Next, in the Document Type column, select “Supporting & Related Material.”

FOR FURTHER INFORMATION CONTACT: If you have questions about this rule, call or email Chief Petty Officer Kyle Weitzell, Marine Safety Unit Duluth, Waterways Management Division, U.S. Coast Guard; telephone 218–725–3821, email Kyle.W.Weitzell@uscg.mil.

SUPPLEMENTARY INFORMATION:

I. Table of Abbreviations

CFR Code of Federal Regulations
 DHS Department of Homeland Security
 FR Federal Register
 NPRM Notice of proposed rulemaking
 § Section
 U.S.C. United States Code

II. Background Information and Regulatory History

On October 10, 2023, the Coast Guard was notified of an air show that will take place over the waters of Lake Superior near Canal Park in Duluth, MN from 3 p.m. through 6 p.m. on July 31, 2024. During this air show, planes will be flying low over the water within the boundary of a zone marked by buoys and small boat on scene. Hazards from this air show include low flying aircraft and jet exhaust produced by the engines

and distraction to the pilots if general boating traffic where to be present within this area. The Captain of the Port Marine Safety Unit Duluth (COTP) has determined that potential hazards associated with the air show at this location would be a safety concern for anyone within an area defined by the following positions, beginning at N 46°47′34.81″, W 092°03′46.70″, then proceeding southwest to N 46°46′52.73″, W 092°05′05.47″, then proceeding southwest to N 46°46′48.00″, W 092°05′28.02″, the following the shoreline northward to N 46°48′1.98″, W 092°04′16.02″, and then returning to the starting point. In response, on May 7, 2024, the Coast Guard published a notice of proposed rulemaking (NPRM) titled Safety Zone; 2024 Duluth Air Spectacular, Lake Superior, Duluth, MN 89 FR 38854). There we stated why we issued the NPRM and invited comments on our proposed regulatory action related to this fireworks display. During the comment period that ended June 8, 2024, we received no comments.

III. Legal Authority and Need for Rule

The Coast Guard is issuing this rule under authority in 46 U.S.C. 70034. The COTP Marine Safety Unit Duluth has determined that potential hazards associated with the air show at this location would be a safety concern for anyone within an area defined by the following positions, beginning at N 46°47′34.81″, W 092°03′46.70″, then proceeding southwest to N 46°46′52.73″, W 092°05′05.47″, then proceeding southwest to N 46°46′48.00″, W 092°05′28.02″, the following the shoreline northward to N 46°48′1.98″, W 092°04′16.02″, and then returning to the starting point and is establishing a safety zone for this area on July 31, 2024 from 12 p.m. through 9 p.m. The purpose of this rule is to ensure safety of vessels and the navigable waters in the safety zone before, during, and after the scheduled event.

IV. Discussion of Comments, Changes, and the Rule

As noted above, we received no comments on our NPRM published May 7, 2024. There are no changes in the regulatory text of this rule from the proposed rule in the NPRM.

This rule establishes a safety zone from 12 p.m. through 9 p.m. on July 31, 2023. The safety zone will cover all navigable waters of Lake Superior near Canal Park in Duluth, MN within an area defined by the following positions, beginning at N 46°47′34.81″, W 092°03′46.70″, then proceeding southwest to N 46°46′52.73″, W 092°05′05.47″, then proceeding

southwest to N 46°46′48.00″, W 092°05′28.02″, the following the shoreline northward to N 46°48′1.98″, W 092°04′16.02″, and then returning to the starting point. The duration of the zone is intended to ensure the safety of vessels and these navigable waters before, during, and after the scheduled air show to begin sometime between 3 p.m. through 6 p.m., depending on weather conditions. No vessel or person will be permitted to enter the safety zone without obtaining permission from the COTP or a designated representative.

V. Regulatory Analyses

We developed this rule after considering numerous statutes and Executive orders related to rulemaking. Below we summarize our analyses based on a number of these statutes and Executive orders, and we discuss First Amendment rights of protestors.

A. Regulatory Planning and Review

Executive Orders 12866 and 13563 direct agencies to assess the costs and benefits of available regulatory alternatives and, if regulation is necessary, to select regulatory approaches that maximize net benefits. This rule has not been designated a “significant regulatory action,” under section 3(f) of Executive Order 12866, as amended by Executive Order 14094 (Modernizing Regulatory Review). Accordingly, this rule has not been reviewed by the Office of Management and Budget (OMB).

This regulatory action determination is based the short duration and small size of the safety zone as well as the ability for most boats to transit between the Duluth Shipping Canal and Lake Superior without entering the zone.

B. Impact on Small Entities

The Regulatory Flexibility Act of 1980, 5 U.S.C. 601–612, as amended, requires Federal agencies to consider the potential impact of regulations on small entities during rulemaking. The term “small entities” comprises small businesses, not-for-profit organizations that are independently owned and operated and are not dominant in their fields, and governmental jurisdictions with populations of less than 50,000. The Coast Guard received no comments from the Small Business Administration on this rulemaking. The Coast Guard certifies under 5 U.S.C. 605(b) that this rule will not have a significant economic impact on a substantial number of small entities.

While some owners or operators of vessels intending to transit the safety zone may be small entities, for the

reasons stated in section V.A above, this rule will not have a significant economic impact on any vessel owner or operator.

Under section 213(a) of the Small Business Regulatory Enforcement Fairness Act of 1996 (Pub. L. 104–121), we want to assist small entities in understanding this rule. If the rule would affect your small business, organization, or governmental jurisdiction and you have questions concerning its provisions or options for compliance, please call or email the person listed in the **FOR FURTHER INFORMATION CONTACT** section.

Small businesses may send comments on the actions of Federal employees who enforce, or otherwise determine compliance with, Federal regulations to the Small Business and Agriculture Regulatory Enforcement Ombudsman and the Regional Small Business Regulatory Fairness Boards. The Ombudsman evaluates these actions annually and rates each agency's responsiveness to small business. If you wish to comment on actions by employees of the Coast Guard, call 1–888–REG–FAIR (1–888–734–3247). The Coast Guard will not retaliate against small entities that question or complain about this rule or any policy or action of the Coast Guard.

C. Collection of Information

This rule will not call for a new collection of information under the Paperwork Reduction Act of 1995 (44 U.S.C. 3501–3520).

D. Federalism and Indian Tribal Governments

A rule has implications for federalism under Executive Order 13132, Federalism, if it has a substantial direct effect on the States, on the relationship between the National Government and the States, or on the distribution of power and responsibilities among the various levels of government. We have analyzed this rule under that Order and have determined that it is consistent with the fundamental federalism principles and preemption requirements described in Executive Order 13132.

Also, this rule does not have tribal implications under Executive Order 13175, Consultation and Coordination with Indian Tribal Governments, because it does not have a substantial direct effect on one or more Indian tribes, on the relationship between the Federal Government and Indian tribes, or on the distribution of power and responsibilities between the Federal Government and Indian tribes.

E. Unfunded Mandates Reform Act

The Unfunded Mandates Reform Act of 1995 (2 U.S.C. 1531–1538) requires Federal agencies to assess the effects of their discretionary regulatory actions. In particular, the Act addresses actions that may result in the expenditure by a State, local, or tribal government, in the aggregate, or by the private sector of \$100,000,000 (adjusted for inflation) or more in any one year. Though this rule will not result in such an expenditure, we do discuss the effects of this rule elsewhere in this preamble.

F. Environment

We have analyzed this rule under Department of Homeland Security Directive 023–01, Rev. 1, associated implementing instructions, and Environmental Planning COMDTINST 5090.1 (series), which guide the Coast Guard in complying with the National Environmental Policy Act of 1969 (42 U.S.C. 4321–4370f), and have determined that this action is one of a category of actions that do not individually or cumulatively have a significant effect on the human environment. This rule involves a safety zone lasting not more than 9 hours that would prohibit entry within an area under the flight path of aircraft participating in an air show. It is categorically excluded from further review under paragraph L60(a) of Appendix A, Table 1 of DHS Instruction Manual 023–01–001–01, Rev. 1. A Record of Environmental Consideration supporting this determination is available in the docket. For instructions on locating the docket, see the **ADDRESSES** section of this preamble.

G. Protest Activities

The Coast Guard respects the First Amendment rights of protesters. Protesters are asked to call or email the person listed in the **FOR FURTHER INFORMATION CONTACT** section to coordinate protest activities so that your message can be received without jeopardizing the safety or security of people, places or vessels.

List of Subjects in 33 CFR Part 165

Harbors, Marine safety, Navigation (water), Reporting and recordkeeping requirements, Security measures, Waterways.

For the reasons discussed in the preamble, the Coast Guard amends 33 CFR part 165 as follows:

PART 165—REGULATED NAVIGATION AREAS AND LIMITED ACCESS AREAS

■ 1. The authority citation for part 165 continues to read as follows:

Authority: 46 U.S.C. 70034, 70051, 70124; 33 CFR 1.05–1, 6.04–1, 6.04–6, and 160.5; Department of Homeland Security Delegation No. 00170.1, Revision No. 01.3.

■ 2. Add § 165.T09–0222 to read as follows:

§ 165.T09–0222 Safety Zone; 2024 Duluth Air Spectacular, Lake Superior, Duluth, MN.

(a) *Location.* The following area is a safety zone: All navigable waters of Lake Superior within an area defined by the following positions, beginning at N 46°47'34.81", W 092°03'46.70", then proceeding southwest to N 46°46'52.73", W 092°05'05.47", then proceeding southwest to N 46°46'48.00", W 092°05'28.02", the following the shoreline northward to N 46°48'1.98", W 092°04'16.02", and then returning to the starting point near Canal Park in Duluth, MN.

(b) *Enforcement period.* July 31, 2024, from 12 p.m. through 9 p.m. The specific time frame for waterway closure will be announced via Broadcast Notice to Mariners.

(c) *Definitions.* The following definitions apply to this section:

(1) *On-scene representative* means any Coast Guard commissioned, warrant, or petty officer designated by the Captain of the Port Duluth to monitor a safety zone, permit entry into the zone, give legally enforceable orders to persons or vessels within the zones, and take other actions authorized by the Captain of the Port.

(2) *Public vessel* means vessels owned, chartered, or operated by the United States, or by a State or political subdivision thereof.

(d) *Regulations.* (1) In accordance with the general regulations in § 165.23 of this part, entry into, transiting, or anchoring within this safety zone identified in paragraph (a) of this section is prohibited unless authorized by the Captain of the Port Duluth or his designated on-scene representative.

(2) The safety zone identified in paragraph (a) of this section is closed to all vessel traffic, except as may be permitted by the Captain of the Port Duluth or his designated on-scene representative.

(3) Vessel operators desiring to enter or operate within the safety zone must contact the Captain of the Port Duluth or his on-scene representative to obtain permission to do so. The Captain of the Port Duluth or his on-scene representative may be contacted via VHF Channel 16. Vessel operators given permission to enter or operate in the safety zone must comply with all directions given to them by the Captain of the Port Duluth, or his on-scene representative.

(e) *Exemption.* Public vessels, as defined in paragraph (c) of this section, are exempt from the requirements in this section.

(f) *Waiver.* For any vessel, the Captain of the Port Duluth or his designated representative may waive any of the requirements of this section, upon finding that operational conditions or other circumstances are such that application of this section is unnecessary or impractical for the purposes of public or environmental safety.

Dated: June 20, 2024.

John P. Botti,

Commander, U.S. Coast Guard, Captain of the Port, Marine Safety Unit Duluth.

[FR Doc. 2024–13973 Filed 6–26–24; 8:45 am]

BILLING CODE 9110–04–P

DEPARTMENT OF HOMELAND SECURITY

Coast Guard

33 CFR Part 165

[Docket No. USCG–2024–0458]

Safety Zone; Annual Fireworks Displays and Other Events in the Eight Coast Guard District Requiring Safety Zones—Go 4th New Orleans Independence Day Celebration

AGENCY: Coast Guard, DHS.

ACTION: Notification of enforcement of regulation.

SUMMARY: The Coast Guard will enforce a safety zone for the Go 4th New Orleans Independence Day Celebration fireworks display located on the navigable waters of the Lower Mississippi River. This action is necessary to provide for the safety of life on these navigable waterways during this event. During the enforcement periods, entry into this safety zone is prohibited unless authorized by the Captain of the Port or a designated representative.

DATES: The regulations in 33 CFR 165.801, will be enforced for the location identified in item 3 of table 5 to § 165.801, from 8:30 p.m. through 9:30 p.m. on July 4, 2024.

FOR FURTHER INFORMATION CONTACT: If you have questions about this notification of enforcement, call or email Lieutenant Commander Xiaobin Tuo, Sector New Orleans, U.S. Coast Guard; telephone 504–269–7251, email Xiaobin.Tuo@uscg.mil.

SUPPLEMENTARY INFORMATION: The Coast Guard will enforce a safety zone in 33 CFR 165.801, table 5 to § 165.801, item

3 for the Go 4th New Orleans Independence Day Celebration fireworks display event. This safety zone will be enforced from 8:30 p.m. through 9:30 p.m. on July 4, 2024. This action is being taken to provide for the safety of life on these navigable waterways during this event. Our regulation for annual fireworks displays and other events in the Sector New Orleans Annual and Recurring Safety Zones in § 165.801, table 5 to § 165.801, item 3, specifies the location of the regulated area on the Lower Mississippi River, between mile marker (MM) 94.3 and MM 95.3. During the enforcement period, as reflected in § 165.801(a), entry into this safety zone is prohibited unless authorized by the Captain of the Port or a designated representative.

In addition to this notification of enforcement in the **Federal Register**, the Coast Guard plans to provide notification of this enforcement period via a Marine Safety Information Bulletin and/or Broadcast Notice to Mariners.

Dated: June 20, 2024.

G.A. Callaghan,

Captain, U.S. Coast Guard, Captain of the Port Sector New Orleans.

[FR Doc. 2024–14034 Filed 6–26–24; 8:45 am]

BILLING CODE 9110–04–P

ENVIRONMENTAL PROTECTION AGENCY

40 CFR Parts 61 and 63

[EPA–R04–OAR–2024–0141; FRL–11846–01–R4]

Tennessee; National Emission Standards for Hazardous Air Pollutants; National Emission Standards for Hazardous Air Pollutants for Source Categories; Supplemental Delegations of Authority

AGENCY: Environmental Protection Agency (EPA).

ACTION: Notification of supplemental delegations of authority.

SUMMARY: On March 9, 2023, the Tennessee Department of Environment and Conservation’s (TDEC or State) Division of Air Pollution Control (TDEC–APC) requested to update the method of delegations and continue the delegations of authority to implement and enforce National Emission Standards for Hazardous Air Pollutants (NESHAPs), and NESHAPs for Source Categories.

DATES: June 27, 2024.

ADDRESSES: Copies of the request to change the delegation mechanism for NESHAP from “case-by-case” to “adopt-

by-reference” and NESHAP for Source Categories from “automatic” to “adopt-by-references” are available for public inspection during normal business hours at the following locations:

Environmental Protection Agency, Region 4, Air and Radiation Division, Air Analysis and Support Branch, 61 Forsyth Street SW, Atlanta, Georgia 30303.

Tennessee Department of Environment and Conservation, Divisions of Air Pollution Control, William R. Snodgrass Tennessee Tower, 312 Rosa L. Parks Avenue, 15th Floor, Nashville, Tennessee 37243.

Effective February 26, 2024, all requests, applications, reports, and other correspondence required by any NESHAP and NESHAP for Source Categories should continue to be submitted to the following address: Tennessee Department of Environment and Conservation, Divisions of Air Pollution Control, William R. Snodgrass Tennessee Tower, 312 Rosa L. Parks Avenue, 15th Floor, Nashville, Tennessee 37243.

Although the EPA is not accepting comments regarding this notification, Docket ID No. EPA–R04–OAR–2024–0141 at <https://www.regulations.gov> contains relevant information related to this information notification.

FOR FURTHER INFORMATION CONTACT:

Tracy Watson, Stationary Source Team, Regulatory and Communities Air Toxics Section, Air Analysis and Support Branch, Air and Radiation Division, Environmental Protection Agency, Region 4, 61 Forsyth St. SW, Atlanta, Georgia 30303, 404–562–8998. Email: watson.marion@epa.gov.

SUPPLEMENTARY INFORMATION:

I. Background

Section 112(l) of the Clean Air Act (CAA), as amended November 15, 1990, authorizes EPA to delegate authority to implement and enforce the standards set out in 40 CFR parts 61 and 63, NESHAPs. On April 11, 1980, EPA initially delegated the authority to implement and enforce the 40 CFR part 61 NESHAP program to TDEC–APC (46 FR 29330). On July 29, 1996, EPA approved TDEC–APC’s use of the EPA’s case-by-case and automatic mechanisms for future delegations of authority for 40 CFR parts 61 and part 63 NESHAPs, respectively. *See* 61 FR 39355.

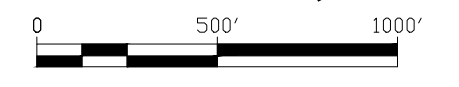
On March 9, 2023, EPA received a letter from TDEC–APC which requested to update the method of delegations and continue the delegations of authority to implement and enforce Title 40, Code of Federal Regulations, part 61, NESHAPs, and part 63, NESHAPs for Source



RS&H
Architectural, Engineering, Planning
and Environmental Services

4525 Airport Approach Rd.
Suite A
Duluth, Minnesota 55811
218-722-1227 FAX 218-722-1052
www.rsandh.com

**2024 AIRSHOW
JULY 30-31, 2024**





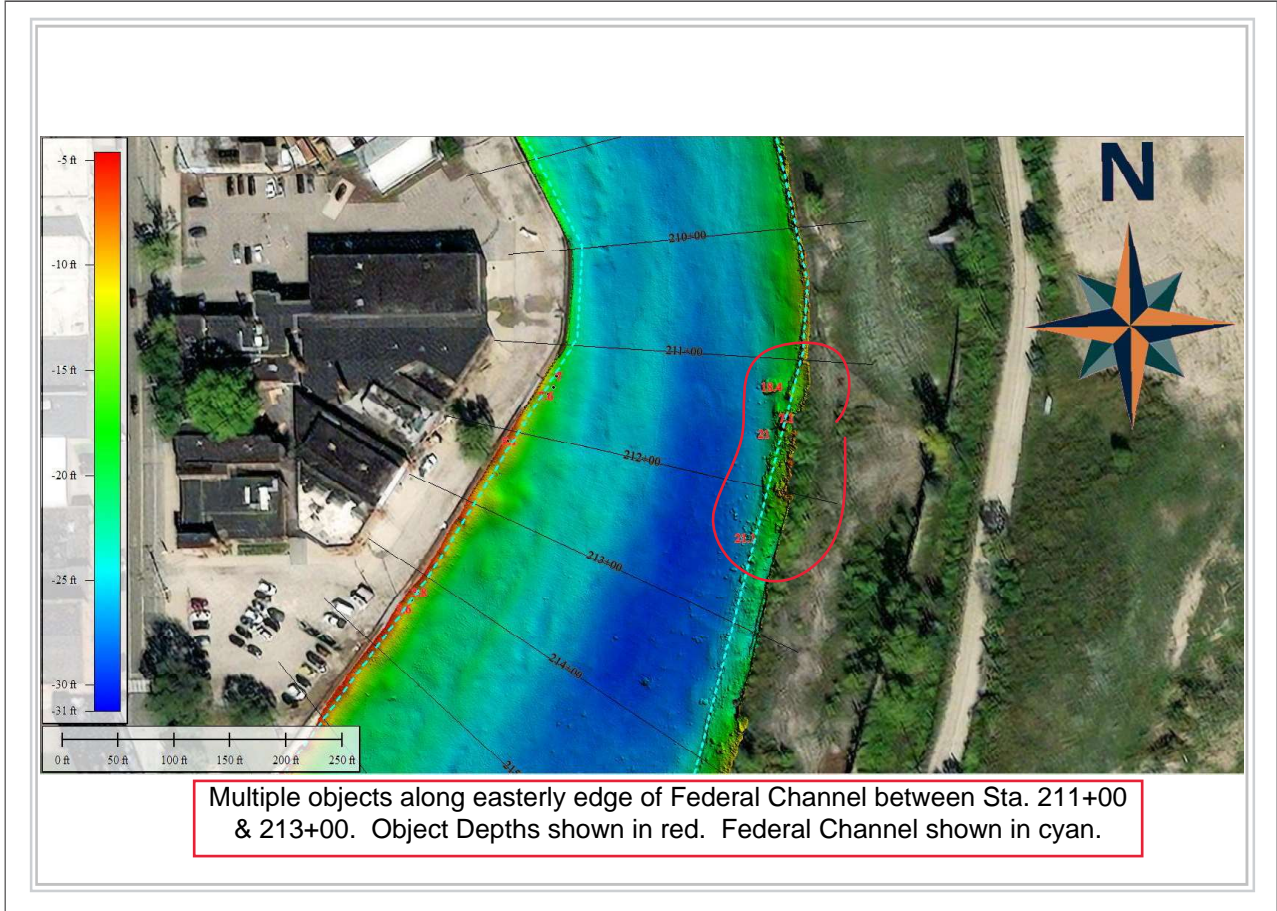
CHANNEL OBSTRUCTION REPORT

U.S. Army Corps of Engineers – Buffalo District

PROJECT NAME: Cuyahoga River
 DATE OBSERVED: 12/07/2023
 CREW: D. Banning, D. Bognar

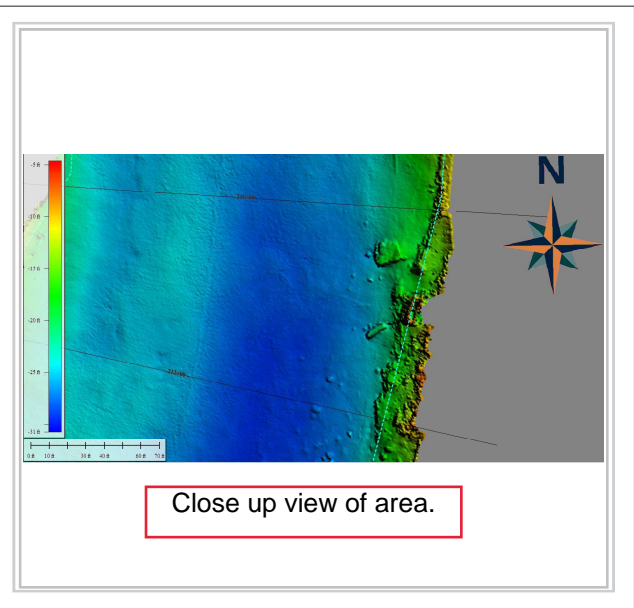
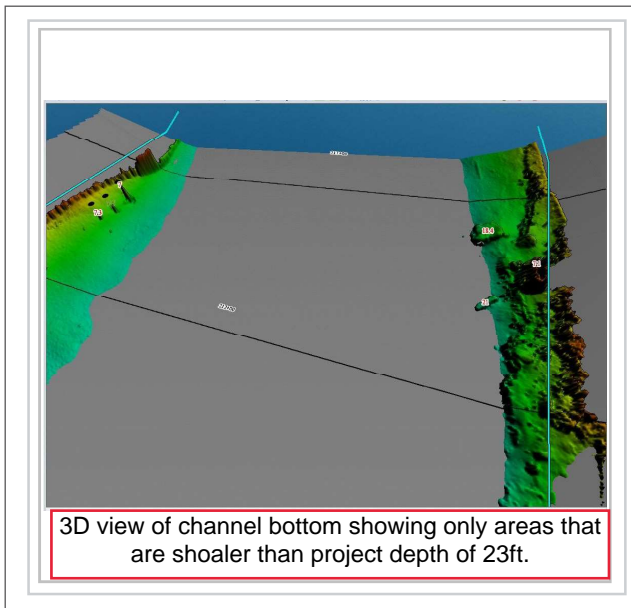
OBJECT: Multiple unknown
 LATITUDE: 41° 29' 23.1785" N
 LONGITUDE: 81° 41' 54.1661" W

SURVEY DATA



View: NE down channel line

Hypack Channel View



Waterway Analysis and Management System Survey

Name of Waterway: _____

User Information

___ Commercial User

___ Recreational User

Number of years in the maritime industry or number of years using this waterway: _____

Number of transits in the waterway per year: _____

Number of night transits of waterway: _____

Seasonal Dates: Start: _____ End: _____

Name of Vessel: _____

Vessel Description: _____

Length: _____ Beam: _____ Draft: _____ Gross Tons: _____

Net Tons: _____ Bridge Height of Eye: _____

Cargo Carried: _____

Navigational tools used: (ECDIS/ECPINS, GPS, DGPS, VISUAL, RADAR) _____

What area do you believe is the most dangerous or difficult to navigate: _____

Are the floating aids to navigation (lighted and unlighted buoys) adequate for this waterway:

Are the fixed aids to navigation (lights, ranges, lighthouses, daybeacons) adequate for this waterway: _____

Are the year round and lighted ice buoys adequate: _____

Are there buoys that you feel should be changed to fixed aids to navigation?

Are there any buoys that could be eliminated from this waterway: _____

Are there any buoys with sound signals that the bell or gong could be removed:

Are there any areas that require additional aids to navigation in this waterway:

Do the nautical charts, Coast Pilot, and Light List meet your needs for this waterway: _____

Are there private Aids to Navigation that you find misleading or interfere with the current system in the waterway:

Any addition comments on this waterway: _____

Thank you for taking time to comment on this waterway. Your input as a mariner very valuable to the U. S. Coast Guard in evaluating waterways to make them safe and as easily navigable as possible. Please feel free to contact D09-DG-District-D9-ATON-Support@uscg.mil with any other questions or concerns about any aids to navigation in the Great Lakes. The survey can be mailed to:

Commander (dpw-2)
Ninth Coast Guard District
1240 East Ninth Street
Cleveland, Ohio 44199
