



U.S. Department  
of Homeland Security  
**United States  
Coast Guard**

## LOCAL NOTICE TO MARINERS

**District: 9**

**Week: 25/24**

Issued by: Commander (dpw)  
Ninth Coast Guard District  
1240 East Ninth Street,  
Cleveland, OH 44199-2060  
Telephone: (571) 608-1683

Direct questions about this LNM to the above address.

All distances in this publication are STATUTE MILES unless otherwise noted.\*

\*District Nine Internet Address\* <https://www.atlanticarea.uscg.mil/Our-Organization/District-9/>

\*District Nine Local Notice to Mariners email Address\* [D09-DG-District-D9-LocalNoticetoMariners@uscg.mil](mailto:D09-DG-District-D9-LocalNoticetoMariners@uscg.mil)

\*\* Navigation Information Service watchstander, 24 hours a day at (703) 313-5900 \*\* \*\*Internet Address\*\* <https://www.navcen.uscg.gov/>

Light List Reference: Commandant Publication P16502.7, VOL VII, 2023 Edition

Coast Pilot Reference: 2024 U.S. Coast Pilot 6 Great Lakes 54th Edition

Coast Pilots, along with corrections are available at: <https://nauticalcharts.noaa.gov/publications/coast-pilot/index.html>

The Local Notice to Mariners is available on the Internet at <https://www.navcen.uscg.gov/local-notices-to-mariners-by-cg-district> You will also have links to other government agencies- web pages including the US Army Corps of Engineers and the National Ocean Service.

### REPORT DISCREPANCIES IN AIDS TO NAVIGATION TO THE NEAREST COAST GUARD UNIT

The Ninth District and all Sector offices for their areas of responsibility issue a BROADCAST NOTICE TO MARINERS.

The following Broadcast Notice to Mariners have been incorporated into this week's Local Notice to Mariners:9

Sector Eastern Great Lakes - EGL087-24 through EGL096-24

Ninth District - C063-24 through C064-24

Sector Detroit, MI - D052-24 through D052-28

Sector Lake Michigan, WI - M168-24 through M180-24

Sector Northern Great Lakes- NGL057-24 through NGL058-24

The United States Coast Guard Navigation Information Service (NIS), operated by the USCG Navigation Center, is staffed 24 hours a day, 7 days a week. The NIS provides information on the current operational status, effective policies, and general information for GPS and DGPS. The

NIS also disseminates Safety Broadcasts (BNM), Local Notice to Mariners (LNM), and the latest Notice Advisory to Navstar Users (NANU). NANU notices can be obtained via email subscription through the USCG Navigation Center website: <https://cgl.uscg.mil/mailman/listinfo/nanu>. In addition, the NIS investigates all reports of degradation or loss of GPS, DGPS or AIS service. Users are encouraged to report all degradation or loss of radio navigation services to the NIS via any of the following: Phone: (703) 313-5900, mail to: [webmaster@smtp.navcen.uscg.mil](mailto:webmaster@smtp.navcen.uscg.mil), or on the internet at: <https://www.navcen.uscg.gov>

## ABBREVIATIONS

### A through H

ADRIFT - Buoy Adrift  
AICW - Atlantic Intracoastal Waterway  
AI - Alternating  
B - Buoy  
BKW - Breakwater  
bl - Blast  
BNM - Broadcast Notice to Mariner  
bu - Blue  
C - Canadian  
CHAN - Channel  
CGD - Coast Guard District  
C/O - Cut Off  
CONT - Contour  
CRK - Creek  
CONST - Construction  
DAYMK/Daymk - Daymark  
DBN/Dbn - Daybeacon  
DBD/DAYBD - Dayboard  
DEFAC - Defaced  
DEST - Destroyed

### I through O

I - Interrupted  
ICW - Intracoastal Waterway  
IMCH - Improper Characteristic  
INL - Inlet  
INOP - Not Operating  
INT - Intensity  
ISL - Islet  
Iso - Isophase  
kHz - Kilohertz  
LAT - Latitude  
LB - Lighted Buoy  
LBB - Lighted Bell Buoy  
LHB - Lighted Horn Buoy  
LGB - Lighted Gong Buoy  
LONG - Longitude  
LNM - Local Notice to Mariners  
LT - Light  
LT CONT - Light Continuous  
LTR - Letter  
LWB - Lighted Whistle Buoy

### P through Z

PRIV - Private Aid  
Q - Quick  
R - Red  
RACON - Radar Transponder Beacon  
Ra ref - Radar reflector  
RBN - Radio Beacon  
REBUILT - Aid Rebuilt  
RECOVERED - Aid Recovered  
RED - Red Buoy  
REFL - Reflective  
RRL - Range Rear Light  
RELIGHTED - Aid Relit  
RELOC - Relocated  
RESET ON STATION - Aid Reset on Station  
RFL - Range Front Light  
RIV - River  
RRASS - Remote Radio Activated Sound Signal  
s - seconds  
SEC - Section  
SHL - Shoaling

DISCON - Discontinued  
DMGD/DAMGD - Damaged  
ec - eclipse  
EST - Established Aid  
ev - every  
EVAL - Evaluation  
EXT - Extinguished  
F - Fixed  
fl - flash  
Fl - Flashing  
G - Green  
GIWW - Gulf Intracoastal Waterway  
HAZ - Hazard to Navigation  
HBR - Harbor  
HOR - Horizontal Clearance  
HT - Height

LWP - Left Watching Properly  
MHz - Megahertz  
MISS/MSNG - Missing  
Mo - Morse Code  
MRASS - Marine Radio Activated Sound Signal  
MSLD - Misleading  
N/C - Not Charted  
NGA - National Geospatial-Intelligence Agency  
NO/NUM - Number  
NOS - National Ocean Service  
NW - Notice Writer  
OBSCU - Obscured  
OBST - Obstruction  
OBSTR - Obstruction  
Oc - Occulting  
ODAS - Anchored Oceanographic Data Buoy

si - silent  
SIG - Signal  
SND - Sound  
SPM - Single Point Mooring Buoy  
SS - Sound Signal  
STA - Station  
STRUCT - Structure  
St M - Statute Mile  
TEMP - Temporary Aid Change  
TMK - Topmark  
TRLB - Temporarily Replaced by Lighted Buoy  
TRLT - Temporarily Replaced by Light  
TRUB - Temporarily Replaced by Unlighted Buoy  
USACE - Army Corps of Engineers  
W - White  
Y - Yellow

**Additional Abbreviations Specific to this LNM Edition:**

LIB - Lighted Ice Buoy

---

**SECTION I - SPECIAL NOTICES**

This section contains information of special concern to the Mariner.

---

**NAVIGATION CENTER WEBSITE FEEDBACK SURVEY**

We are eager to understand the primary reason for your visit to the Navigation Center website and how you use it, whether for recreational boating, professional purposes, data requests, educational reasons, or otherwise. Your feedback on the website's ease of use, ability to find information, and if it's your primary source for navigation-related information is crucial. We are committed to improving your experience and welcome any suggestions to enhance the site's usability, information accessibility, and overall efficiency. Your insights are invaluable in helping us better meet your navigation needs.

Survey: Navigation Center Website Feedback Survey ([surveymonkey.com](https://www.surveymonkey.com))

LNM: 15/24

**Cancellation of NOAA Paper and Raster Nautical Charts**

The National Oceanic and Atmospheric Administration (NOAA) is undertaking a multi-year program to end production and maintenance of its suite of over 1,000 traditional paper nautical charts and all associated raster chart products and services, including: Print-on-Demand (POD) paper nautical charts, Full-size chart PDF files, BookletChart™ PDF files, NOAA raster navigational charts (NOAA RNC®), the NOAA RNC tile service, and the online RNC viewer.

Six months notice of the intent to cancel a specific chart is provided in a "Last Edition" notice. The final cancellation of a chart is made in a "Canceled" notice. Both types of notices will appear in LNM Section IV, "Chart Correction." A comprehensive list of all canceled NOAA charts is available at: <http://www.charts.noaa.gov/MCD/Dole.shtml>.

Traditional paper nautical chart production is ending to enable the creation and maintenance of larger scale, more up-to-date, higher quality coverage of NOAA's electronic navigational chart (NOAA ENC®) product. This will significantly enhance the amount of charted detail available to mariners. More information about NOAA's program to sunset traditional paper charts is on the NOAA Coast Survey website at: <https://nauticalcharts.noaa.gov/charts/farewell-to-traditional-nautical-charts.html>

An online NOAA Custom Chart application at: <https://devgis.charttools.noaa.gov/pod> is available to create chart images from ENC data, which may then be printed. Notices to Mariners will not be issued for NOAA Custom Charts.

LNM: 04/20

**SAFETY NOTICE - NAVIGATIONAL RANGE AND SECTOR LIGHTS ON ELECTRONIC CHARTS**

The U.S. Coast Guard has become aware that the Range and Sector Light Characteristic labels are not displayed on Electronic Navigational Charts (ENCs) when used in an Electronic Chart Display and Information System (ECDIS) due to limitations of the S-52 ECDIS display specification. Mariners may query the ENC data directly within ECDIS or refer to the Light List for complete information on Range and Sector Light Characteristics.

LNM: 39/22

**PUBLICATION OF NVIC 03-23 GUIDANCE ON NAVIGATIONAL SAFETY IN AND AROUND OFFSHORE RENEWABLE ENERGY INSTALLATIONS (OREI)**

The Coast Guard has published Navigation and Vessel Inspection Circular (NVIC) 03-23: Guidance on Navigational Safety In and Around Offshore Renewable Energy Installations (OREI) to highlight considerations when planning and undertaking voyages in the vicinity of offshore renewable energy installations (OREI) in U.S. waters. The prudent mariner should review and utilize this NVIC to make an informed risk assessment prior to

navigating within or in the vicinity of an OREI. Important Maritime Safety Information (MSI) relating to OREIs is distributed by Local or Broadcast Notices to Mariners (LNM or BNM) promulgated by Coast Guard Districts. Marine Safety Information Bulletins (MSIB) released by the local Captain of the Port (COTP) may be issued to provide supplemental information. Interested parties should contact the Office of Navigation Systems at CGNAV@uscg.mil with any questions or feedback.

LNM: 47/23

### **MERCHANT MARINER CREDENTIAL**

The U.S. Coast Guard announced a new merchant mariner credential (MMC) set to launch on March 1, 2024. This milestone marks the first comprehensive revision of the mariner credential in nearly a decade and is strategically designed to enhance both quality of service and security within the Marine Transportation System (MTS). U.S. Coast Guard Marine Safety Information Bulletin (MSIB) 01-24, New Merchant Mariner Credential Passport Booklet Replacement, has been posted on the DCO's MSIB Site and announced at the National Maritime Center (CG-NMC) Home Page (uscg.mil). Please visit these resources for more information on the credential.

LNM: 09/24

### **2024 Light List**

2024 Light Lists are available on the USCG Navigation Center's website at:  
<https://www.navcen.uscg.gov/light-list-annual-publication>

Coast Guard Light Lists are a means for communicating aids to navigation information to the maritime public. The last government printed Light Lists were the 2024 editions.

While the Light Lists will no longer be available in government printed form, commercial reproductions may be available for purchase from maritime service providers.

Local Notice to Mariners will continue to advise Light List corrections and NAVCEN will continue to publish a compilation of corrections.

Complete versions of the 2024 Light Lists are updated weekly on the NAVCEN website and mariners should download applicable copies and updates as needed at: <https://www.navcen.uscg.gov/weekly-light-lists>

A summary of 2024 Light List corrections are available at: <https://www.navcen.uscg.gov/light-list-summary-of-corrections>

Guidance for use of electronic navigation publications onboard U.S. vessels can be found at:  
[http://www.uscg.mil/hq/cgcv/cvc/policy/policy\\_letters/543/CG-543\\_pol10-05.pdf](http://www.uscg.mil/hq/cgcv/cvc/policy/policy_letters/543/CG-543_pol10-05.pdf)

If the links above do not work, you should either copy and paste the links into your web browser or follow the LNM links from the Navigation Center LNM page at <https://www.navcen.uscg.gov/local-notice-to-mariners-by-cg-district>.

The Local Notice to Mariners, Light List, and Summary of Corrections are in Portable Document Format (PDF) and viewing them requires a PDF reader. PDF readers are readily available on the internet, generally free of charge.

If you have questions regarding this message, please contact the Navigation Center at <https://www.navcen.uscg.gov/report-a-problem> (use "LNMs, Charts, Chart Corrections, or Light Lists" as the subject from the pull down menu).

LNM: 03/24

### **U.S. Coast Pilot 6-NEW EDITION**

PUBLICATION—National Oceanic Atmospheric Administration (NOAA)— U.S. Coast Pilot 6, Great Lakes and their connecting waterways, 54th Edition, 2024, has been issued and is ready for free download and weekly updates at <https://nauticalcharts.noaa.gov/publications/coast-pilot/index.html>.

Only Print-on-Demand (POD) bound copies are available for purchase; visit [nauticalcharts.noaa.gov/publications/print-agents.html#coast-pilot](https://nauticalcharts.noaa.gov/publications/print-agents.html#coast-pilot). The 2024 Edition cancels the preceding 2023 Edition, and incorporates all previous corrections.

LNM: 16/24

### **USACE NOTICE TO NAVIGATION INTERESTS**

Current Federal Channel conditions, shoaling, and the most recent channel surveys are available at the following Army Corps of Engineers web sites:

Buffalo: <http://www.lrb.usace.army.mil/>  
Detroit: <http://www.lre.usace.army.mil/>  
Chicago: <http://www.lrc.usace.army.mil/>  
Rock Island: <http://www.mvr.usace.army.mil/>  
St. Paul: <https://www.mvp.usace.army.mil/>

LNM: 28/12

**GREAT LAKES - Great Lakes Water Levels**

See Enclosure 1

The current and four week expected water level table for the Great Lakes, Connecting Channels and the St. Lawrence River, will be published in Enclosure 1 following SECTION VIII - LIGHT LIST CORRECTIONS of the Local Notice to Mariner or by visiting the link below:

<https://www.lre.usace.army.mil/Missions/Great-Lakes-Information/Great-Lakes-Water-Levels/Water-Level-Forecast/Connecting-Channels-Forecast/>

LNM: 32/20

**LAKE ERIE – Fairport Harbor – Chart 14829**

The Coast Guard has established a virtual AIS aid to navigation at the entrance of Fairport Harbor to assist in identifying recent shoaling within the channel. The aid (MMSI: 993682815) is labeled W SHOAL 2 and identifies the encroachment of shoaling on the western side of the channel less than 18.5ft water depth. The aid is for reference only and is positioned based on most recent survey data, and does not account for periodic variations in the position of the shoal. Mariners are urged to use caution while transiting the area.

LNM: 21/23

**LAKE ST. CLAIR - St. Clair Cut-off LB "CO" LLNR 8590**

The Coast Guard will be temporarily deploying a buoy of reduced size at St. Clair Cut-Off Preferred Channel Lighted Buoy "CO" (LLNR 8590) in Lake St. Clair, MI. The visual and operational radar range of the buoy will be reduced. The lighted signal range will remain unchanged. The temporary change is in response to delays in the permanent buoy's off-season refurbishment. Upon completion, the permanent buoy will be redeployed back on station. All mariners are requested to use caution while transiting the area.

LNM: 15/24

**LAKE HURON - Port Austin**

Port Austin Light 5 (LLNR 10295) will be temporarily disestablished due to the extension and improvement of the existing breakwater. The aid will be reinstalled upon project completion. All mariners are urged to use caution while transiting the area.

LNM: 20/24

**ST. MARYS RIVER - American Canal - Chart 14884**

Northeast Pierhead Light (LLNR 14205) The U. S. Army Corps of Engineers will be relocating this light to the top of their new camera tower. As soon as the position and height of the light's new location is confirmed it will be advertised in Section VIII - Light List Corrections of the LNM.

LNM: 10/21

**LAKE MICHIGAN - Seul Choix Point**

The Coast Guard has received a report of soundings less than charted depth 3.5NM east/southeast of Seul Choix Point at position 45°53'18"N, 085°50'27"W. The area of reduced depth was reported on the east/west Manistique to Lansing Shoal recommended shipping route. Mariners are urged to use caution while transiting the area.

LNM: 06/24

**LAKE MICHIGAN – Muskegon Channel – Chart 14906**

The Coast Guard has established a pair of virtual AIS aids to navigation at the entrance of Muskegon Harbor to assist in identifying recent shoaling within the approaches. V-AIS (MMSI: 993682821) identifies the encroachment of shoaling on the northern side of the channel less than 25ft water depth. Similarly, V-AIS (MMSI: 993682842) identifies shoaling on the south side of the channel less than 25ft. The aids are for reference only and are positioned based on most recent survey data and do not account for periodic variations in the position of the shoaling. Mariners are urged to use caution while transiting the area.

LNM: 24/23

**LAKE SUPERIOR - Isle Royale**

The Coast Guard has received a report of a partially submerged spar buoy at position 48°05'49"N, 088°44'12"W, on the north shore of Isle Royale just west of Hawk Island. Mariners are urged to use caution while transiting this area.

LNM: 25-24

**LAKE SUPERIOR – Keweenaw – Chart 14972**

Keweenaw Upper Entrance West Breakwater Light (LLNR 15115) was reported damaged and swept from its location on the breakwall. The approximately 20' metal tower is submerged in vicinity of the breakwater at an unknown position. All mariners are urged to use caution when transiting the area.

LNM: 12/23

**LAKE SUPERIOR - Duluth-Superior Harbor**

The Coast Guard is experiencing significant delays in the seasonal deployments of the below buoys in Superior Front Channel, St. Louis Bay and Minnesota Channel in vicinity of Duluth-Superior Harbor. The Coast Guard is anticipating commissioning the channels prior to the end of May. Mariners are requested to use caution while transiting the area.

15750 Superior Front Channel Lighted Buoy 1  
 15765 Superior Front Channel Lighted Buoy 5  
 15785 Superior Front Channel Lighted Buoy 9  
 15840 Duluth Harbor Breakwater Isolated Danger Buoy  
 16180 St. Louis River Upper Channel Lighted Buoy 4  
 16205 Minnesota Channel (Eastern Section) Lighted Buoy 6  
 16210 Minnesota Channel (Eastern Section) Lighted Buoy 7  
 16220 Minnesota Channel (Eastern Section) Lighted Buoy 9  
 16225 Minnesota Channel (Eastern Section) Lighted Buoy 10  
 16235 Minnesota Channel (Eastern Section) Lighted Buoy 14  
 16240 Minnesota Channel (Eastern Section) Lighted Buoy 15  
 16250 Minnesota Channel (Eastern Section) Lighted Buoy 19

LNM: 19/24

---



---

## SECTION II - DISCREPANCIES

This section lists all reported and corrected discrepancies related to Aids to Navigation in this edition. A discrepancy is a change in the status of an aid to navigation that differs from what is published or charted.

---

### DISCREPANCIES (FEDERAL AIDS)

LLNR	Aid Name	Status	Chart No.	BNM Ref.	LNM St	LNM End
<b>1770</b>	<b>Stony Island Lighted Buoy 2</b>	<b>LT EXT</b>	<b>14800</b>	<b>EGL097-24</b>	<b>25/24</b>	
<b>1775</b>	<b>Point Peninsula Lighted Buoy 3</b>	<b>LT EXT</b>	<b>14800</b>	<b>EGL098-24</b>	<b>25/24</b>	
<b>1940</b>	<b>Lime Barrel Shoal Lighted Buoy 1</b>	<b>LT EXT</b>	<b>14800</b>		<b>25/24</b>	
10035	Lake Huron Cut Lighted Buoy 1	OFF STA		D041-24	23/24	
<b>11900</b>	<b>Mullett Lake Lighted Buoy 24</b>	<b>MISSING</b>		<b>NGL059-24</b>	<b>25/24</b>	
13030	Munuscong Channel (Upbound) Junction Light ML	AIS INOP			21/24	
13070	Munuscong Channel (Upbound) Lighted Buoy 9	AIS INOP			05/24	
13125	Sailors Encampment Channel Lighted Buoy 21	AIS INOP			05/24	
13475	West Neebish Channel (Downbound) Upper Range Rear Light	DAYMK MISSING			36/23	
13645	Sawmill Point Lighted Buoy 22	AIS INOP			05/24	
13695	Moon Island Lighted Buoy 13	AIS INOP			05/24	
13955	Upper Nicolet Range Front Light	DAYMK MISSING			21/24	
13960	Upper Nicolet Range Rear Light	DAYMK MISSING		NGL004-24	26/23	
14050	Six Mile Point Range Rear Light	DAYMK MISSING		S079-23	10/21	
14880	Keweenaw Waterway Light 25	STRUCT DEST/TRLB		NGL047-24	19/24	
15115	Keweenaw Upper Entrance West Breakwater Light	STRUCT DEST		S015-23	02/23	
17210	Canoe Channel Daybeacon 8	STRUCT DEST/TRUB			23/22	
<b>20980</b>	<b>Algoma Light 1</b>	<b>LT EXT</b>		<b>M179-24</b>	<b>25/24</b>	
22180	Green Bay Harbor Entrance Channel Range Front Light	DAYMK DMGD		M327-22	24/21	
22185	Green Bay Harbor Entrance Channel Range Rear Light	DAYMK MISSING		M157-23	44/20	

### DISCREPANCIES (FEDERAL AIDS) CORRECTED

LLNR	Aid Name	Status	Chart No.	BNM Ref.	LNM St	LNM End
4660	Sandusky Exit Channel Junction Lighted Buoy E	WATCHING PROPERLY			24/24	25/24
4690	Sandusky Dock Channel Lighted Buoy 23	WATCHING PROPERLY			24/24	25/24
10955	Saginaw River Lighted Buoy 54	WATCHING PROPERLY			25/24	25/24

**DISCREPANCIES (PRIVATE AIDS)**

LLNR	Aid Name	Status	Chart No.	BNM Ref.	LNM St	LNM End
<b>4030</b>	<b>Cleveland Waterworks Intake Crib Light</b>	<b>LT EXT</b>		<b>EGL088-24</b>	<b>25/24</b>	
4256	Cashelmara Jetty Light	LT IMCH			24/24	
4960	Sandusky Yacht Club Light 1	LT EXT		D026-24	18/24	
4965	Sandusky Yacht Club Light 2	LT EXT		D027-24	18/24	
6025	Toledo Water Works Intake Crib Lights	LT EXT		D034-24	20/24	
11388.1	East Alpena Channel Buoy 2	MISSING/TRUB			17/24	
18745	Harbour Towne Entrance Light 2	LT EXT		M102-24	20/24	
19860	Filtration Plant Breakwater South End Light	LT EXT			23/24	
19865	Filtration Plant Breakwater North End Light	LT EXT			23/24	
19931	Thirty-First Street Jetty Danger Lighted Buoy A	MISSING			23/24	
19932	Thirty-First Street Jetty Danger Lighted Buoy B	MISSING			23/24	
19933	Thirty-First Street Jetty Danger Lighted Buoy C	MISSING			23/24	
19934	Thirty-First Street Inner Jetty Light	LT EXT			23/24	
20470	Racine Launch Basin Entrance Light	LT EXT			22/24	
20545	Racine Harbor Light 13	LT EXT			22/24	
20681	Lakeshore State Park Entrance Lt 1	LT EXT		M116-24	21/24	
20700	Milwaukee City South Pier No. 2 South Light	LT EXT		M165-24	24/24	
20729	South Shore Park Entrance Lighted Buoy 1	MISSING			21/24	
20730	South Shore Park Entrance Lighted Buoy 2	MISSING			21/24	

**DISCREPANCIES (PRIVATE AIDS) CORRECTED**

LLNR	Aid Name	Status	Chart No.	BNM Ref.	LNM St	LNM End
------	----------	--------	-----------	----------	--------	---------

None

**PLATFORM DISCREPANCIES**

Name	Status	Position	BNM Ref.	LNM St	LNM End
------	--------	----------	----------	--------	---------

None

**PLATFORM DISCREPANCIES CORRECTED**

Name	Status	Position	BNM Ref.	LNM St	LNM End
------	--------	----------	----------	--------	---------

None

**SECTION III - TEMPORARY CHANGES and TEMPORARY CHANGES CORRECTED**

This section contains temporary changes and corrections to Aids to Navigation for this edition. When charted aids are temporarily relocated for dredging, testing, evaluation, or marking an obstruction, a temporary correction shall be listed in Section IV giving the new position.

**TEMPORARY CHANGES**

LLNR	Aid Name	Status	Chart No.	BNM Ref.	LNM St	LNM End
2105	Oswego Harbor West Channel Light 2	TRLB	14786		17/19	
2855	Black Rock Canal Light 15	DISCONTINUED			12/24	
8240	William Livingstone Memorial Light	Reduced Intensity			33/21	
9690	Grande Pointe Light 23	TRLT			47/20	

10295	Port Austin Light 5	DISCONTINUED	14860	20/24
14540	Little Lake Harbor Light 2	DISCONTINUED FOR DREDGING		47/22
15220	Ontonagon Harbor East Breakwater Light	DISCONTINUED		02/22
16963	Driftwood Point Light	DISCONTINUED		45/20

**TEMPORARY CHANGES CORRECTED**

LLNR	Aid Name	Status	Chart No.	BNM Ref.	LNM St	LNM End
------	----------	--------	-----------	----------	--------	---------

None

**PLATFORM TEMPORARY CHANGES**

Name	Status	Position	BNM Ref.	LNM St	LNM End
------	--------	----------	----------	--------	---------

None

**PLATFORM TEMPORARY CHANGES CORRECTED**

Name	Status	Position	BNM Ref.	LNM St	LNM End
------	--------	----------	----------	--------	---------

None

**SECTION IV - CHART CORRECTIONS**

This section contains corrections to federally and privately maintained Aids to Navigation, as well as NOS corrections.

This section contains corrective actions affecting chart(s). Corrections appear numerically by chart number, and pertain to that chart only. It is up to the mariner to decide which chart(s) are to be corrected. The following example explains individual elements of a typical chart correction.

Chart Number	Chart Edition	Edition Date	Last Local Notice to Mariners	Horizontal Datum Reference	Source of Correction	Current Local Notice to Mariners
12327	91st Ed.	19-APR-97	Last LNM: 26/97	NAD 83		27/97
Chart Title: NY-NJ-NEW YORK HARBOR - RARITAN RIVER						
Main Panel 2245 NEW YORK HARBOR						
(Temp) ADD	NATIONAL DOCK CHANNEL BUOY 3				CGD01	at 40-41-09.001N 074-02-48.001W
Corrective Action	Green can	Object of Corrective Action			Position	

(Temp) indicates that the chart correction action is temporary in nature. Courses and bearings are given in degrees clockwise from 000 true. Bearings of light sectors are toward the light from seaward. The nominal range of lights is expressed in nautical miles (NM) unless otherwise noted.

**14786**      **15th Ed.**      **01-SEP-18**      **Last LNM: 40/17**      **NAD 83**      **25/24**

Chart Title: **SMALL-CRAFT BOOK CHART New York State Canal System (book of 61 Charts)**

**Main Panel 1100 OSWEGO RIVER - MINETTO - -. Page/Side: -**

LAST EDITION      No new editions of chart 14786 will be published. It will be canceled on 04-Dec-24. Comparable or larger scale Electronic Navigational Chart (ENC) coverage is available. See "Cancellation of NOAA Paper and Raster Nautical Charts" in Section I of this LNM for details. A list of all canceled NOAA charts is at <https://www.charts.noaa.gov/MCD/Dole.shtml>.

NOS  
--

**14800**      **10th Ed.**      **01-SEP-05**      **Last LNM: 33/13**      **NAD 83**      **25/24**

Chart Title: **Lake Ontario (Metric)**

**Main Panel 1112 LAKE ONTARIO. Page/Side: N/A**

LAST EDITION      No new editions of chart 14800 will be published. It will be canceled on 30-Oct-24. Comparable or larger scale Electronic Navigational Chart (ENC) coverage is available. See "Cancellation of NOAA Paper and Raster Nautical Charts" in Section I of this LNM for details. A list of all canceled NOAA charts is at <https://www.charts.noaa.gov/MCD/Dole.shtml>.

NOS  
--

**14820**      **22nd Ed.**      **01-MAY-20**      **Last LNM: 48/19**      **NAD 83**      **25/24**

Chart Title: **Lake Erie**

**Main Panel 1134 LAKE ERIE - -. Page/Side: -**

					NOS	
	LAST EDITION	No new editions of chart 14820 will be published. It will be canceled on 30-Oct-24. Comparable or larger scale Electronic Navigational Chart (ENC) coverage is available. See "Cancellation of NOAA Paper and Raster Nautical Charts" in Section I of this LNM for details. A list of all canceled NOAA charts is at <a href="https://www.charts.noaa.gov/MCD/Dole.shtml">https://www.charts.noaa.gov/MCD/Dole.shtml</a> .			--	--
<b>14860</b>	<b>37th Ed.</b>	<b>01-MAY-16</b>	<b>Last LNM: 19/22</b>	<b>NAD 83</b>		<b>25/24</b>
	<i>ChartTitle: Lake Huron</i>					
	<b>Main Panel 1312 LAKE HURON. Page/Side: A</b>					
	LAST EDITION	No new editions of chart 14860 will be published. It will be canceled on 30-Oct-24. Comparable or larger scale Electronic Navigational Chart (ENC) coverage is available. See "Cancellation of NOAA Paper and Raster Nautical Charts" in Section I of this LNM for details. A list of all canceled NOAA charts is at <a href="https://www.charts.noaa.gov/MCD/Dole.shtml">https://www.charts.noaa.gov/MCD/Dole.shtml</a> .			NOS	--
<b>14901</b>	<b>18th Ed.</b>	<b>01-AUG-20</b>	<b>Last LNM: 19/22</b>	<b>NAD 83</b>		<b>25/24</b>
	<i>ChartTitle: Lake Michigan (Mercator Projection)</i>					
	<b>Main Panel 1361 LAKE MICHIGAN - -. Page/Side: -</b>					
	LAST EDITION	No new editions of chart 14901 will be published. It will be canceled on 30-Oct-24. Comparable or larger scale Electronic Navigational Chart (ENC) coverage is available. See "Cancellation of NOAA Paper and Raster Nautical Charts" in Section I of this LNM for details. A list of all canceled NOAA charts is at <a href="https://www.charts.noaa.gov/MCD/Dole.shtml">https://www.charts.noaa.gov/MCD/Dole.shtml</a> .			NOS	--
<b>14902</b>	<b>32nd Ed.</b>	<b>01-NOV-20</b>	<b>Last LNM: 19/22</b>	<b>NAD 83</b>		<b>25/24</b>
	<i>ChartTitle: North end of Lake Michigan, including Green Bay</i>					
	<b>Main Panel 1362 NORTH END OF LAKE MICHIGAN INCLUDING GREEN BAY - -. Page/Side: -</b>					
	LAST EDITION	No new editions of chart 14902 will be published. It will be canceled on 30-Oct-24. Comparable or larger scale Electronic Navigational Chart (ENC) coverage is available. See "Cancellation of NOAA Paper and Raster Nautical Charts" in Section I of this LNM for details. A list of all canceled NOAA charts is at <a href="https://www.charts.noaa.gov/MCD/Dole.shtml">https://www.charts.noaa.gov/MCD/Dole.shtml</a> .			NOS	--
<b>14961</b>	<b>13th Ed.</b>	<b>01-FEB-16</b>	<b>Last LNM: 36/19</b>	<b>NAD 83</b>		<b>25/24</b>
	<i>ChartTitle: Lake Superior (Mercator Projection)</i>					
	<b>Main Panel 1499 LAKE SUPERIOR. Page/Side: A</b>					
	LAST EDITION	No new editions of chart 14961 will be published. It will be canceled on 30-Oct-24. Comparable or larger scale Electronic Navigational Chart (ENC) coverage is available. See "Cancellation of NOAA Paper and Raster Nautical Charts" in Section I of this LNM for details. A list of all canceled NOAA charts is at <a href="https://www.charts.noaa.gov/MCD/Dole.shtml">https://www.charts.noaa.gov/MCD/Dole.shtml</a> .			NOS	--

---

### SECTION V - ADVANCE NOTICES

This section contains advance notice of approved projects, changes to aids to navigation, or upcoming temporary changes such as dredging, etc. Mariners are advised to use caution while transiting these areas.

---

#### SUMMARY OF ADVANCED APPROVED PROJECTS

<u>Approved Project(s)</u>	<u>Project Date</u>	<u>Ref. LNM</u>
<b>None</b>		
<u>Advance Notice(s)</u>		
<b>LAKE ERIE - Black Rock Canal - Buffalo NY</b>		
The Coast Guard is permanently disestablishing Black Rock Canal Light 15 (LLNR 2855) in Buffalo, NY. The light is currently not operational.		
	LNM: 11/24	
<b>LAKE ERIE - Willis Crib - Erie PA</b>		
The Coast Guard is permanently disestablishing Willis Crib Isolated Danger Buoy "DW" (LLNR 3492) in Erie, PA. The operation of Willis Crib Dock Light (LLNR 3490) will not change.		
	LNM: 11/24	
<b>LAKE ERIE - Detroit - CHART 14854</b>		
The Coast Guard will be changing the operation of the sound signal on Detroit River Light (LLNR 6885) from operating continuously, to Mariner Radio Activated Sound Signal (MRASS) year-round. The sound signal would be activated by keying the microphone five or more times on VHF FM channel 83A / 157.175MHz.		
	LNM: 50/23	



**LAKE ERIE - Sandusky Channel**

The Coast Guard will be changing the operation of Sandusky Straight Channel Buoy 15 (LLNR 4665) from a permanent unlighted buoy to a seasonally lighted buoy. The buoy will be lighted from Apr 14th to Dec 7th annually, and will display a Fl G 2.5s characteristic.

LNM: 19/24

**STRAITS OF MACKINAC - Cheboygan River**

The Coast Guard is permanently changing the seasonal operation dates of Cheboygan River Entrance Lighted Buoy 2 (LLNR 11780) to unlighted from Nov 15th to May 1st. The change is in response to the recent installation of a year-round buoy hull and a shift in servicing unit capabilities.

LNM: 02/24

**LAKE MICHIGAN - Frankfort Harbor**

The Coast Guard will be establishing the following floating aids to navigation in the inner harbor of Frankfort, MI.

- Frankfort Harbor Buoy 1 (LLNR 18396), 44-37-47.477N, 086-14.28.844W
- Frankfort Harbor Buoy 2 (LLNR 18397), 44-37-44.991N, 086-14.28.777W
- Frankfort Harbor Buoy 3 (LLNR 18398), 44-37-48.323N, 086-14-24.383W
- Frankfort Harbor Buoy 4 (LLNR 18399), 44-37-45.055N, 086-14-24.677W

The lateral buoys will serve as gated pairs to assist mariners in navigating the inner harbor during periods of increased seasonal vessel traffic. The buoys will be seasonal in operation and will be deployed from the 14 of May to the 14 of October annually. Mariners are urged to utilize the channel for transiting and avoid anchoring or obstructing the navigational channel.

LNM: 15/24

**LAKE MICHIGAN - Chicago**

The Coast Guard will be permanently disestablishing the RACON signal on Chicago Lake Front Northeast Shoal Lighted Buoy 2 (LLNR 19790). The RACON signal has been permanently replaced by S-AIS (MMSI: 993672228). The physical and lighting characteristics of the buoy will remain unchanged.

LNM: 09/24

**SECTION VI - PROPOSED CHANGES**

Periodically, the Coast Guard evaluates its system of aids to navigation to determine whether the conditions for which the aids to navigation were established have changed. When changes occur, the feasibility of improving, relocating, replacing, or discontinuing aids are considered. This section contains notice(s) of non-approved, proposed projects open for comment. SPECIAL NOTE: Mariners are requested to respond in writing to the District office unless otherwise noted (see banner page for address).

**PROPOSED WATERWAY PROJECTS OPEN FOR PUBLIC COMMENT**

<u>Proposed Project(s)</u>	<u>Closing</u>	<u>Docket No.</u>	<u>Ref. LNM</u>
None			

**Proposed Change Notice(s)**

**ST. MARYS RIVER - Lime Island**

The Coast Guard is evaluating the reestablishment of the physical Lime Island Traffic Lighted Buoy (LLNR 12915) in the St. Marys River, MI. The physical aid was previously replaced by a V-AIS buoy. The lighted buoy would be seasonal in operation and not replaced by a winter mark. Mariners are encouraged to provide feedback to the Ninth District Aids to Navigation Office regarding the possible redeployment of the lighted buoy, as well as the function of the current V-AIS buoy.

LNM: 14/24

**LAKE SUPERIOR – Duluth Harbor**

The Coast Guard is evaluating the reestablishment of the physical Duluth Harbor Basin Traffic Lighted Buoy (LLNR 15870) in Duluth Harbor, MN. The physical aid was previously replaced by a V-AIS buoy. The lighted buoy would be seasonal in operation and not replaced by a winter mark. Mariners are encouraged to provide feedback to the Ninth District Aids to Navigation Office regarding the possible redeployment of the lighted buoy, as well as the function of the current V-AIS buoy.

LNM: 14/24

**For any comments or questions on these proposed changes please contact:**

The Ninth District Aids to Navigation manager at Brian.D.Hawkins2@uscg.mil or call (206) 815-0913.

LNM: 30/13

**SECTION VII - GENERAL**

This section contains information of general concern to the Mariners. Mariners are advised to use caution while transiting these areas.

**Waterways Analysis and Management System**

The Ninth Coast Guard District will be reviewing the following waterways throughout the Great Lakes Region. The study focuses primarily on aids to navigation in the waterway. Public comments are an important tool in this process so that we can provide the adequate markings and the right mix of signals to a waterway for safe navigation. Comments on the below listed waterways can be sent to Brian.D.Hawkins2@uscg.mil or by calling (206) 815-0913. You may also complete the survey attached to the Local Notice to Mariner and either email it or mail it to: Commander (dpw), Ninth

The following waterways will be evaluated for the duration of calendar year 2024 and will be accepting comment until 31Dec2024:

Sackets Harbor  
(LLNR 1755-2024.9)  
Buffalo Harbor/Black Rock Canal  
(LLNR 2665-3360)  
Dunkirk Harbor  
(LLNR 3365-3492)  
Erie Harbor  
(LLNR 3495-3696)  
Conneaut Harbor  
(LLNR 3700-3735)  
Ashtabula Harbor  
(LLNR 3740-3830)  
Fairport Harbor  
(LLNR 3835-3955)

LNLM: 11/24

**GREAT LAKES - Marine Events**

Marine events such as races, parades, regattas, and fireworks displays are frequently held in the Great Lakes region. Advance information on specific events is contained in enclosure (2) of this publication. The public is reminded to listen to the local broadcast notice to mariners for the most up-to-date information on a marine event. Mariners are advised that some events may require temporary aids to navigation that are not displayed on a chart or in the Light List, and that they should exercise additional caution while operating in the vicinity of a scheduled marine event.

LNLM: 24/13

**LAKE ONTARIO – Little Sodus Bay – Chart 14800**

There is an uncharted breakwall along the shore extending from the west side of Little Sodus Bay entrance to the boat ramp of West Barrier Bar County Park. The breakwall is unmarked and unlit. Visibility of the breakwall may be impacted due to high water. All mariners are requested to transit the area with caution.

LNLM: 19/23

**LAKE ONTARIO - Crescent Beach Breakwater**

A series of breakwater barriers are being constructed in Lake Ontario near Crescent Beach, to the east of Sodus Point, NY. Work will be conducted from 01 April 2024, to 30 November 2024 between the hours of 0500 to 2000. Hours are dependent on weather conditions. Construction vessels can be hailed on VHF Channel 16. Inquiries related to the project can be directed to Mr. Glenn Roet at (315) 575-6091. All mariners are advised to stay clear of workboats, barges, floating or submerged equipment in the operational work area between floating navigation buoys detailed below and the shoreline.

- 1 N43°16'21.77817" W76°57'52.20335"
- 2 N43°16'20.93870" W76°57'46.38712"
- 3 N43°16'20.17974" W76°57'41.15137"
- 4 N43°16'19.26083" W76°57'36.11887"
- 5 N43°16'17.99008" W76°57'30.33037"
- 6 N43°16'16.95743" W76°57'25.59050"
- 11 N43°16'26.91154" W76°56'44.64137"
- 12 N43°16'29.34557" W76°56'39.60362"
- 13 N43°16'31.87966" W76°56'34.99165"
- 14 N43°16'33.90231" W76°56'31.32131"

LNLM: 14/24

**LAKE ERIE – Erie Harbor**

From 1 June 2024 to 15 July 2024 Ryba Marine Construction Co will be conducting dredging in Erie Harbor. Hours of operation are 24 hours a day 7 days a week. Tug Kristin Joelle can be contacted on VHF channels 13 and 16. All mariners are requested to transit the area with caution.

LNLM: 20/24

**LAKE ERIE – OH - Ashtabula Harbor – Chart 14836**

A submerged breakwater was constructed in Ashtabula harbor. It is connected to the existing East Breakwater. The submerged breakwater is connected to the East Breakwater at the first angle point of the East Breakwater, as entering the harbor, from the lake. All elevations referenced are referred to Low Water Datum (LWD), IGLD 1985.

The center line of the submerged breakwater approximately follows the same azimuth as the first segment of the East Breakwater, in a south easterly direction, for approximately 1000', then slightly bends to the east for another two segments, for approximately 500'.

The first 1000' (Area "A") has a crest design height of -2.0' with a crest width of 9', and a footprint of approximately 150', with the next 100' transitioning to the dimensions in the next item.

The final 400 (Area "B") has a crest height of -5.0', with a crest width of 9', and a footprint of approximately 50'.

The coordinates, in decimal degrees, are as follows:

1. 41.918447801N 80.790362308W
2. 41.916367139N 80.788014301W

**LAKE ERIE – OH - Ashtabula Harbor – Chart 14836**

- 3. 41.916189406N 80.787730327W
- 4. 41.916026216N 80.787424318W
- 5. 41.915640784N 80.786454826W
- 6. 41.916242815N 80.783904852W

All mariners are requested to transit the area with caution.

LNM: 17/23

**LAKE ERIE – Cleveland Harbor – Chart 14839**

Submerged obstructions were reported and confirmed in location 41° 29.380' N, 081° 41.906' W (NAD83) on the Cuyahoga river's left descending bank just east of the Columbus Road Bridge. The USACE completed a hydrological survey on 07 December 2023, which identified four obstructions on the river's bottom believed to be sections of steel corrugated bulkhead originating from a nearby retaining wall. The failed sections settled at the bottom of the river approximately 20 feet into the navigational channel and were measured to be between 18-21 feet from the water's surface. Mariners may contact the Sector Eastern Great Lakes Command Center with any questions by phone at 716-843-9596. The most current USACE Hydrographic Survey data can be found on their website here: Buffalo District Maps and Charts (army.mil). All mariners are requested to transit the area with extreme caution.

LNM: 51/23

**LAKE ERIE – Cleveland Harbor**

From 6 May 2024 to 18 July 2024 Ryba Marine Construction Co will be conducting dredging in Cleveland OH. Hours of operation are 24 hours a day 7 days a week. Tug Kathy Lynn can be contacted on VHF channels 13 and 16. All mariners are requested to transit the area with caution.

LNM: 18/24

**LAKE ERIE- Rocky River**

Shoaling has been reported at the mouth of the Rocky River and throughout its entirety, exceeding 5 feet above low water datum inside the main channel. Of major note, the turning basin located at the mouth of the river on the west bank measures in areas at less than one foot. The latest U.S. Army Corps of Engineers hydrological survey can be found online via links above. All mariners are requested to transit the area with caution.

LNM: 08/24

**LAKE ERIE – Maumee River**

From 08 Jan 2024 to 31 Oct 2025 Mark Haynes Construction will be conducting island restoration of the Clark and Delaware/Horseshoe islands on the Maumee River near river mile 9. Hours of operation are from 0700 to 1700 Monday to Thursday. Two temporary causeways are constructed between the shore and islands that block the side channel at the following locations.

- 1. Immediately downstream of the Maumee River Yacht Club.
- 2. Walbridge Park Boat launch.

Boaters entering the river should follow alternate routes marked by temporary buoys. For more information, please visit: <https://www.toledoport.org/projects/clark-and-delawarehorseshoe-islands-restoration-projects/>

LNM: 08/24

**DETROIT RIVER – Belle Isle Intake**

From 15 Apr 2024 to 15 Oct 2024 Dean Marine and Excavating will be conducting shoreline rehabilitation near the intake point Belle Isle. Hours of operation are from 0600 to 1900 7 days a week. Vessels can be contacted on VHF channels 16 and 79. All mariners are requested to transit the area with caution.

LNM: 14/24

**DETROIT RIVER - Rouge River**

From 24 Apr 2024 to 15 Sep 2024 Great Lakes Dock and Materials will be conducting mechanical dredging and capping in the Lower Rouge River. Hours of operation 12 Hours a day Monday thru Saturday. Barge Jacqueln, Tug Duluth and Tug Tracy Lynn can be contacted on VHF channels 16 and 18. All mariners are requested to transit the area with caution.

LNM: 17/24

**LAKE HURON – Port Austin**

From 2 Apr 2024 to 1 July 2024 Dean Marine and Excavating will be conducting breakwater extension and dredging in Port Austin. Hours of operation are from 0600 to 1900 7 days a week. Vessels can be contacted on VHF channels 16 and 79. All mariners are requested to transit the area with caution.

LNM: 14/24

**ST. MARYS RIVER – Neebish Channel**

From 01 May 2024 to 01 Sep 2024 Roen Salvage Company will be conducting maintenance dredging in the Middle Neebish and West Neebish channels. Hours of operation are 24 hours a day 7 days a week. Tug David R Schanock can be contacted on VHF channels 7, 12 and 16. All mariners are requested to transit the area with caution.

LNM: 18/24

**STRAITS OF MACKINAC**

From 01 May 2024 to 01 October 2024 Kokosing Industrial Inc will be conducting stone laying over exposed sections of the new American Transmission Company 138V submarine power cables installed in 2021. Hours of operation are 24 hours a day 7 days a week. Tugs Nancy Anne, Champion, General, WM. Boyd, Shirley Ann and crew boat Timmy V can be contacted on VHF channels 13 and 16. All mariners are requested to maintain 500 yards away from survey vessels and to transit the area with caution.

LNM: 18/24

**STRAITS OF MACKINAC – Point LaBarbe to McGulpin Point**

From 29 May 2024 to 31 July 2024 Enbridge/Tetra Tech will be conducting underwater survey of Enbridge line 5 pipelines. Hours of operation are from 0600 to 1800 7 days a week. M/V Ugle Duckling can be contacted on VHF channels 13 and 16. The underwater survey effort will be conducted with a hybrid autonomous and remotely underwater vehicles (HAUV/ROV) with these vehicles supported from the vessel(s) noted above. All vessels are requested to remain 1500' (500-yard safety zone) away from the survey vessel.

LNM: 16/24

**LAKE MICHIGAN – New Buffalo Harbor - Chart 14905**

Shoaling has been reported near the middle of the channel immediately inside the break wall in New Buffalo Harbor, MI. The actual water depth is currently significantly below the charted depth. Mariners are urged to use caution when transiting the area. For further details, contact Sector Lake Michigan at (414) 747-7182 or VHF channel 16.

LNM: 15/22

**LAKE MICHIGAN – Port Sheldon – Chart 14932**

Shoaling has been reported near Pigeon Lake at the Port Sheldon entrance. The actual water depth is currently significantly below the charted depth. Mariners are urged to use caution when transiting the area. For further details, contact Sector Lake Michigan at (414) 747-7182 or VHF channel 16.

LNM: 15/23

**LAKE MICHIGAN - Manistee**

Shoaling has been reported in Lake Manistee in position 44-15.41N, 086-18.76W. All mariners are requested to transit the area with caution. For further details, contact Sector Lake Michigan at (414) 747-7182 or VHF channel 16.

LNM: 15/24

**LAKE MICHIGAN - Ludington Harbor**

From 25 Apr 2024 to 15 June 2024 Viking Marine will be conducting hydraulic dredging in Ludington Harbor. Hours of operation are 24 hours a day 7 days a week. Dredge Morgab Gale II can be contacted on VHF channel 78. Hydraulic Cutterhead dredge – includes 13,000 feet of submerged pipeline running from the center of the channel in the outer harbor to south of Buttersville Park. The pipeline will be marked with orange buoys every 500'. The pontoon at the disposal site will be painted yellow, surrounded by orange buoys, and have orange flashing lights at night.

LNM: 22/24

**LAKE MICHIGAN - Saugatuck**

From 5 June 2024 to 01 July 2024 the King Company Inc will be conducting hydraulic dredging in the outer channel of Saugatuck MI. Hours of operation are 24 hours a day 7 days a week. Dredge Barry J can be contacted on VHF channels 16, 18 and 73. Submerged dredge pipe will be lying on the lake floor, marked by orange round buoys every 500 feet. (2) white buoys will be seen North and South of the dredge. The white buoys indicate winch anchor locations. The disposal area starts south of the pier 4,900' and runs for an additional 1,600' south. The primary contact will be the Superintendent Robert Lister. His cell number is listed below. During rough seas, our pipe pontoon will be floating outside of the channel. It is bright yellow, 25'x8'x6' and has (2) flashing lights on each end that come on at night.

LNM: 23/24

**LAKE MICHIGAN – Muskegon Channel – Chart 14906**

The Coast Guard has received reports that the depths at the entrance to Muskegon Lake are less than the charted depths. All mariners are requested to transit the area with caution.

LNM: 17/23

**LAKE MICHIGAN – Muskegon Outer Channel**

From 01 May 2024 to 10 June 2024 the King Company Inc will be conducting hydraulic dredging in the Muskegon outer channel. Hours of operation are 24 hours a day 7 days a week. Dredge Barry J can be contacted on VHF channels 16, 18 and 73. Dredge pipe will be lying on the lake floor, marked by orange round buoys every 500 feet. (2) white buoys will be seen North and South of the dredge. The white buoys indicate winch anchor locations. The disposal area starts south of the pier 2,800' and runs for an additional 3,000'. The primary contact will be the Superintendent Robert Lister. His cell number is listed below. During rough seas, our pipe pontoon will be floating outside of the channel. It is bright yellow, 25'x8'x6' and has (2) flashing lights on each end that come on at night.

LNM: 08/24

**LAKE MICHIGAN – Grand Haven**

From 16 May 2023 to 15 July 2024 the U.S. Army Corps of Engineers will be conducting pier work at USACE facility and outer pierhead. Hours of operation are Wednesday May 22 through Wednesday May 29th 0700 to 1630, Wednesday June 5th through Wednesday June 12th 0700 to 1630, and Wednesday June 19th through Wednesday June 26th 0700 to 1630. Tug Mike Donlon can be contacted on VHF channels 16 and 17. All mariners are requested to transit the area with caution.

LNM: 20/24

**LAKE MICHIGAN – Grand Haven**

From 9 May 2024 to 30 June 2024 the King Company will be conducting hydraulic dredging in Grand Haven's Outer channel. Submerged pipe laying on the lake floor marked by orange round buoys every 500 feet. (2) white buoys will be seen North and South of the dredge. The white buoys indicate winch anchor locations. Disposal area starts South of the breakwater 10,000' and goes 5,000' Northward. Placement will be between the 8' – 12' contour. Main contact will be the Superintendent Joseph Martin. Cell# listed below. During rough seas our pipe pontoon will be floating outside of the channel. It is bright yellow, 25'x8'x6' and has (2) flashing lights on each end that come on at night. Another pipe pontoon that is bright yellow (25'x8'x6') and has (2) flashing lights on each end will be in the disposal area.

LNM: 20/24

**LAKE MICHIGAN - Gary Indiana**

From 5 June 2024 to 30 Oct 2024 Geodynamics, an NV5 Company will be conducting hydrographic survey in support of nautical chart updates. The

**LAKE MICHIGAN - Gary Indiana**

survey area has nearshore work off Gary, In, Michigan City, In, ~4-8 nmi work off Highland Park, IL, and further offshore work ~9-20 nmi offshore of Chicago, IL. Surveys will be conducted 24 hours a day, 7 days a week, on the RV Substantial and 12 hours a day, 7 days a week on the RV Benthos. The RV Benthos is a 30 ft Armstrong aluminum catamaran survey vessel operating multibeam sonar. Provide 1/2 nautical mile distance when possible. Mariners are urged to transit at their slowest safe speed in the vicinity of the survey vessels to minimize wake. All survey vessels have AIS and will monitor VHF channels 16/13.

LNM: 22/24

**LAKE MICHIGAN – Whihala Beach**

Whoazone has established a waterborne obstacle course at the Whihala Beach that will be in operation from 10 June 2024 to 25 August 2024. It is requested that all traffic remain outside the designated area and transit the area with caution. Contact Sector Lake Michigan at (414) 747-7182 or Whoazone general manager at (219)234-2615.

LNM: 16/24

**LAKE MICHIGAN - Indiana Harbor Canal**

There is an obstruction on the south side of the Federal channel at the Indiana Harbor Canal in East Chicago, Indiana at the location of the former Canal St. bridge.

LNM: 16/24

**LAKE MICHIGAN – Sheboygan River – Chart 14922**

Shoaling has been reported in entrance of the Sheboygan River in the vicinity of 43-44.928N, 087-42.170W AND 43-44.936N, 087-42.110W. The actual water depth is currently significantly below the charted depth. Mariners are urged to use caution when transiting the area. For further details, contact Sector Lake Michigan at (414) 747-7182 or VHF channel 16.

LNM: 24/22

**LAKE MICHIGAN – Sheboygan**

From 1 April 2024 to 1 June 2024 Kokosing Industrial marine division will be placing 02 temporary mooring ball in the Sheboygan Harbor in positions 43°45'5.11"N 087°41'50.6"W AND 43°45'1.51"N 087°41'46.39"W. All mariners are requested to transit the area with caution. For further details, contact Kokosing Industrial at 231-627-5633 or Sector Lake Michigan VIA channel 16.

LNM: 14/24

**LAKE SUPERIOR – Little Lake Harbor – Chart 14961**

Shoaling has been reported in the entrance of Little Lake Harbor exceeding 5 feet above low water datum near the channel edges. Some cross sections of the channel are shoaled nearly the full width to 2 feet or more above low datum. The harbor should not be considered as a functional harbor or refuge. All mariners are requested to transit the area with caution.

LNM: 47/22

---

---

**SECTION VIII - LIGHT LIST CORRECTIONS**

An Asterisk \*, indicates the column in which a correction has been made to new information

(1) No.	(2) Name and Location	(3) Position	(4) Characteristic	(5) Height	(6) Range	(7) Structure	(8) Remarks
15355	Ashland Harbor Lighted Buoy 1						Remove from list. 25/24
							*
15370	Ashland Harbor Lighted Buoy 4						Remove from list. 25/24
							*

---

---

**ENCLOSURES**

**(1) LNM Section I - Special Notices**

1-Great Lakes Water Levels

LNM: 06/22

**(2) LNM Section II - Discrepancies**

N/A

LNM: 19/19

**(3) LNM Section III - Temporary Changes and Temporary Changes Corrected**

N/A

LNM: 19/19

**(4) LNM Section IV - Chart Corrections**

N/A

LNM: 19/19

**(5) LNM Section V - Advance Notices**

N/A

LNM: 19/19

**(6) LNM Section VI - Proposed Changes**

N/A

LNM: 19/19

**(7) LNM Section VII - General**

1-Marine Events

2-Current Ninth District Bridge Maintenance/Activities

3-Waterway Analysis and Management System Survey

LNM: 19/19

**(8) LNM Section VIII - Light List Corrections**

N/A

LNM: 19/19

---

J. P. Hickey, RADM  
U. S. Coast Guard  
Commander, Ninth Coast Guard District

## GREAT LAKES, CONNECTING CHANNELS AND ST. LAWRENCE RIVER WATER LEVELS AND DEPTHS

Expected water levels on the Great Lakes, Connecting Channels and the St. Lawrence River are given in inches above (+,0) or below (-,0) Low-Water Datum (LWD,0). LWD is a plane of reference on a navigation chart, also known as Chart Datum. LWD elevations shown below are given in International Great Lakes Datum, 1985 (IGLD 1985,0).

	Forecast Point	Low Water Datum IGLD 1985	Expected Levels (inches above or below Low Water Datum,0)				
			Current	Week 1	Week 2	Week 3	Week 4
			14-Jun	21-Jun	28-Jun	5-Jul	12-Jul
<b>GREAT LAKES</b>							
Lake Ontario		243.3	31	31	30	30	30
Lake Erie		569.2	44	44	43	43	42
Lake St. Clair		572.3	40	40	39	39	38
Lake Michigan-Huron		577.5	24	24	25	25	25
Lake Superior		601.1	7	8	8	8	9
<b>ST. LAWRENCE RIVER</b>							
Above Long Sault Dam	0	237.9	33	33	33	33	32
Above Iroquois Dam	1	240.3	27	27	27	27	27
Ogdensburg	2	242.4	28	27	27	27	27
Alexandria Bay	2.1	243.0	30	30	29	29	29
Head of river at Cape Vincent	3	243.3	31	31	30	30	30
<b>DETROIT RIVER</b>							
Lake Erie at Pelee Passage	4	569.2	44	44	43	43	42
Mouth of River at Gibraltar	5	569.5	45	44	43	43	42
Fort Wayne	5.1	571.1	45	44	44	43	42
Head of River above Belle Isle	6	572.0	41	41	40	40	39
<b>ST. CLAIR RIVER</b>							
Mouth of River at St. Clair Flats	7	572.3	40	40	39	39	38
Algonac	8	572.8	40	40	39	39	38
St. Clair	9	574.4	35	35	35	35	35
Blue Water Bridge	10	576.2	32	32	32	32	32
Head of River at Fort Gratiot	11	577.2	27	27	27	27	27
Lake Huron Approach Channel	12	577.5	24	24	25	25	25
<b>ST. MARYS RIVER</b>							
Mouth of River at Detour	13	577.5	24	24	25	25	25
West and Middle Neebish	14	577.8	21	21	22	22	22
Head of Little Rapids	15	578.4	20	20	20	20	20
U.S. Slip	16	578.7	18	18	19	19	19
Above Locks	17	600.4	10	11	11	11	12
Head of River at Point Iroquois	18	601.1	7	8	8	8	9

### UNDERSTANDING THE FORECAST

Available water depth is determined for a location by adding (if+) or subtracting (if-) the amount from the above table to the appropriate channel depth shown in the profile Connecting Channel Depths Graphic or to water depths shown on National Oceanic and Atmospheric Administration (NOAA) navigational charts.

### CAUTION

Depths so determined are representative of a still water surface elevation, disturbed by neither wind nor other causes. Depths, however, may be reduced or increased as much as several feet for short periods due to these disturbances, or when sections of channels develop shoals. Vessel masters should refer to "Local Notice to Mariners" for extent of shoaling and scattered bedrock projections in all channels. Ice conditions can have a dramatic impact on actual channel depth and can lead to large short-term water level fluctuations. Ice information can be found at the National Ice Center's website.

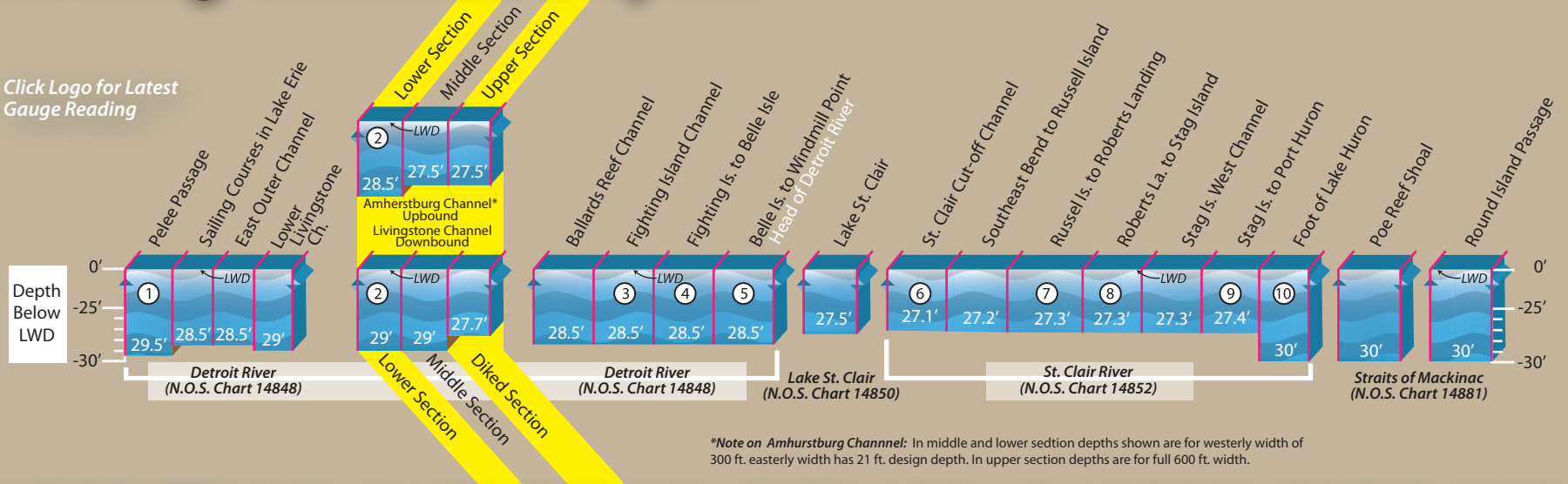
FOR FURTHER INFORMATION CONTACT:	FOR MORE INFORMATION VISIT:	WATER LEVEL INFORMATION SUPPLIED BY:
Detroit District Corps of Engineers	<a href="#">Detroit District Great Lakes Homepage</a>	NOAA, National Ocean Service
477 Michigan Avenue	<a href="#">International Joint Commission</a>	SSMC4, STATION 7523
Detroit MI, 48226	<a href="#">Great Lakes Information Network</a>	1305 East-West Hwy
1-888-694-8318 ex. 1	<a href="#">NOAA Tides and Currents</a>	Silver Spring, MD 20910-3233
email: <a href="mailto:hghpm@usace.army.mil">hghpm@usace.army.mil</a>	<a href="#">U.S. Coast Guard - District 9</a>	(301) 713-2902

# Connecting Channels Depths

## Detroit & St. Clair Rivers



Click Logo for Latest Gauge Reading



\*Note on Amherstburg Channel: In middle and lower section depths shown are for westerly width of 300 ft. easterly width has 21 ft. design depth. In upper section depths are for full 600 ft. width.

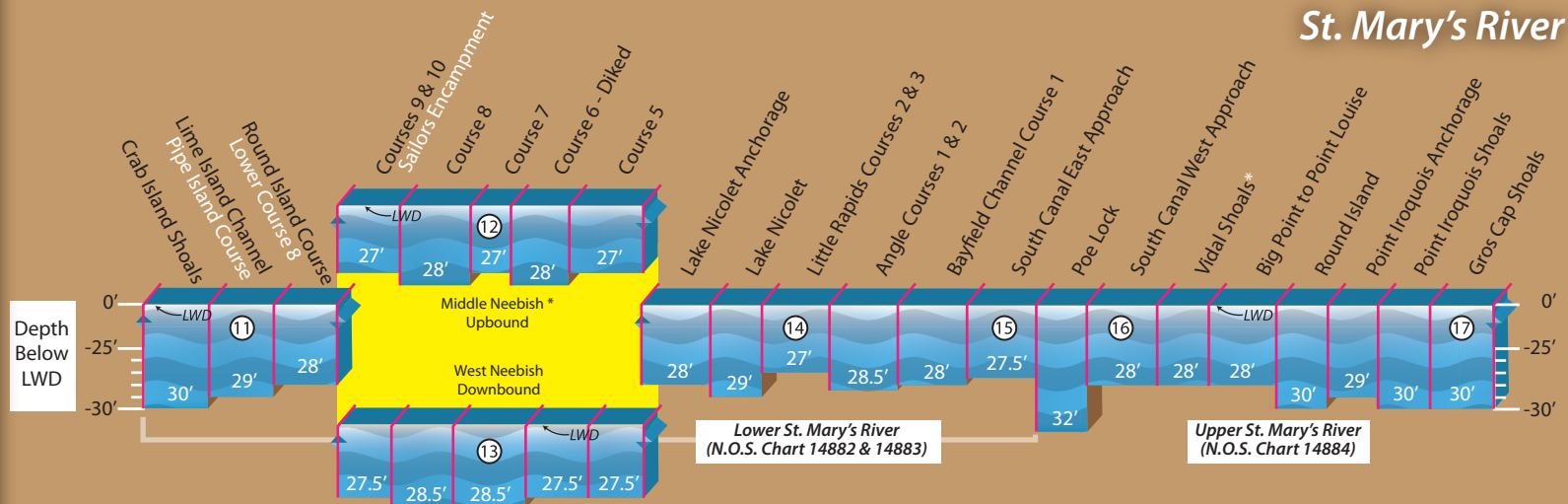
Detroit & St. Clair Rivers NOAA Gauge Locations: 1. Fermi, 2. Gibraltar, 3. Wyandotte, 4. Fort Wayne, 5. Windmill Point, 6. St. Clair Shores, 7. Algonac, 8. St. Clair State Police, 9. Mouth of Black River, 10. Fort Gratiot

**This Chart is for general information only.**

**Vessel masters should refer to Local Notice to Mariners for extent of shoaling and scattered bedrock projections in all channels.**

The connecting channels, as authorized, provide depths varying from 27 to 30 feet below Low Water Datum (LWD), depending on exposure of channel, hardness of bottom material and vessel squat in each reach. These depths are designed to permit maximum draft of 25'6" for lake vessels when the water level is at LWD. However, the individual vessel master should give further consideration to the characteristics peculiar to his vessel and to his individual clearance and safety requirements in determining the safe draft to which to load his vessel.

## St. Mary's River



\*Note on Middle Neebish: In courses 5, 6, 7, 8 & 9 depths shown are westerly width of 300 ft. in course 8 depth shown is for westerly width of 600 ft. In all courses easterly width has 21 ft. design depth.

\*Note on Vidal Shoals: For the entire channel length, a design depth of 29' exist from 500' South to 300' North of the channel centerline. What remains of the 1500' total channel width is at a 28' project depth.

St. Mary's River NOAA Gauge Locations: 11. De Tour Village, 12. West Neebish Is, 13. Rock Cut, 14. Little Rapids, 15. U.S. Slip, 16. S.W. Pier 17. Point Iroquois



**US Army Corps of Engineers®**  
Detroit District



**GREAT LAKES-MARINE EVENT-SAFETY ZONES-SECURITY ZONES**

Events listed below are those events that may have accompanying special local regulations.

<b><u>Location</u></b>	<b><u>Name of Event</u></b>	<b><u>Date / Time</u></b>	<b><u>POC</u></b>	<b><u>Tel #</u></b>
Morristown, NY.	Brockville Yacht Club	15 May - 15 Oct	1730-2030	Jason VanBlitterswyk 613-342-4155
<b><u>LAKE ONTARIO</u></b>				
Youngstown, NY	LOOR Susan Hood Trophy Race (SHTR)	31-May-24	1900-2330	Graham Dougall 866-462-8828
Youngstown, NY	LOOR LOSHRS Race 2 (PCYC to YYC)	15-Jun-24	1000-2330	Graham Dougall 866-462-8828
Youngstown, NY	LOOR LOSHRS Race 3 (YYC to PCYC)	16-Jun-24	1000-1130	Graham Dougall 866-462-8828
Youngstown, NY	LOOR LO300	13-17 Jul-24	1000-2400	Graham Dougall 866-462-8828
Youngstown, NY	LOOR LOSHRS Race 4 (Long Distance/100 miler)	17-18 Aug=24	1000-2330	Graham Dougall 866-462-8828
Sodus Bay, NY	Breakwater Barrier Construction Project outside Sodu	1 Apr-24-15 May-24	0700-2000	Glen Roet 315-564-6784
Sodus Bay, NY	Breakwater Barrier Construction Project outside Sodu	1 Aug- 31 Oct	0700-2000	Glen Roet 315-564-6784
Rochester, NY	Don Van Vechten Sunfish Regatta	3-Aug-24	1000-1500	William Dexter 585-461-2422
Rochester, NY	Brown Jug Afternoon Race	2-3 Sep	1200-1530	William Dexter 585-461-2422
Rochester, NY	Thistle Sailboat Fall Frontier Regatta	7-8 Sep	1100-1400	William Dexter 585-461-2422
Rochester, NY	RYC 2024 High School Sailing Program	13 Mar-10 Nov	various	Peter Mendick 585-342-5511
Rochester, NY	Lake Ontario Club Challenge LOCC	19-21 Jul	various	Peter Mendick 585-342-5511
Rochester, NY	RYC Annual Memorial Day Fleet Review	27-May-24	1450-1900	Peter Mendick 585-342-5511
Rochester, NY	RYC Jr Sail Instruction	19 Jun- 12 Aug	0900-1600	Peter Mendick 585-342-5511
Rochester, NY	Melges 15 Great Lakes Championship	12-14 Jul	various	Peter Mendick 585-342-5511
Rochester, NY	Lake Ontario Yacht Racing Association LYRA Regatta	29 Jul-4 Aug	various	Peter Mendick 585-342-5511
Rochester, NY	Junior Olympics	9-11 Aug	various	Peter Mendick 585-342-5511
Rochester, NY	Hospice Regatta	16-17 Aug	various	Peter Mendick 585-342-5511
Rochester, NY	Lambert Lai Regatta	23-25 Aug	various	Peter Mendick 585-342-5511
Rochester, NY	Genesee Yacht Club Tuesday Night Racing	21 May - 17 Sep	1730-2000	Kenny Fourspring 814-746-2183
Rochester, NY	Genesee Yacht Club Saturday Morning Racing	25 May - 5 Oct	1000-1300	Kenny Fourspring 814-746-2183
Rochester, NY	Genessee Yacht Club Boat Parade	26-May-24	1300-1500	Kenny Fourspring 814-746-2183
Rochester, NY	Genesee Yacht Club Scotch Bonnet Light Race	23-24 Aug	1700-1700	Kenny Fourspring 814-746-2:440-781-0:
Rochester, NY	RYC 2024 One Design and Offshore Racing Series	14 May - 14 Oct	various	Peter Mendick 585-342-5511
<b><u>LAKE ERIE</u></b>				
Erie, PA	Wednesday Night Races	28-May-24	1730-2100	Sharon Dale 814-724-9968
Erie, PA	Sunday Sailboat Races	2-Jun-24	1000-1700	Sharon Dale 814-724-9968
Erie, PA	Jamison Family Heatwave Race #3	27-Jul-22	1600-1900	Sharon Dale 814-724-9968
Erie, PA	Battle of Lake Erie College Regatta	22-Jun-24	1000-1600	Sharon Dale 814-724-9968
Erie, PA	Sailboat race Erie to Ashtabula	9-Aug-24	0600-1900	Sharon Dale 814-724-9968
Erie, PA	Erie Yacht Club Open Regatta	3-Aug-24	1000-1800	Sharon Dale 814-724-9968
Erie, PA	Sailboat Race From Erie to Port Dover and Back	7-Sep-24	0600-2000	Sharon Dale 814-724-9968
Erie, PA	Night Light House Race	16-Aug-24	2000-0300	Sharon Dale 814-724-9968
Erie, PA	Erigatta Sailboat Race	8-Jun-24	0800-1800	Emily Hornyak 814-440-4816
Erie, PA	Lake Erie Interclub Cruise	22-Jun-24	1000-1500	Matthew Wolford 814-323-1338
Buffalo, NY	China Light Series (Tuesday Night Series), Buffalo Har	21 May - 3 Sep	1810-2130	Laura Redding 716-574-0540
Buffalo, NY	Wednesday Night Series, Buffalo Harbor Sailing Club F	22 May - 4 Sep	1810-2130	Laura Redding 716-574-0540
Buffalo, NY	Chuck Chilcott Summer Regatta, Buffalo Harbor Sailin	12-13 Jul	1810-1810	Laura Redding 716-574-0540
Buffalo, NY	Double Hand Series, Buffalo Harbor Sailing Club Race	: 25 Jul- 15 Aug	1810-2130	Laura Redding 716-574-0540
Buffalo, NY	Last Chance Regatta, Buffalo Harbor Sailing Club Race	11-Sep-24	1030-1430	Laura Redding 716-574-0540

Buffalo, NY	Die Hard Series, Buffalo Harbor Sailing Club Race Seas	11 Sep -25 Sep	1810-2130	Laura Redding	716-574-0540
Buffalo, NY	4th of July Boat Parade	4-Jul-24	2000-2100	Kevin Arnold	716-946-7144
Buffalo, NY	West Side Invitational	7-Jul-24	0700-1400	Ian Suchan	716-604-5156
Buffalo, NY	Head of the Niagara	13-Oct-24	0700-1400	Ian Suchan	716-604-5156
Mentor/Ohio	Genesis Project (Security Zone)	17-18-Jun-24	0630-1930	Timothy Kanieski	440-364-4232
Mentor/Ohio	Genesis Project (Security Zone)	20-21-Jun-24	1430-0230	Timothy Kanieski	440-364-4232
Mentor/Ohio	Genesis Project (Security Zone) Rain Dates	24-28-Jun-24	To be reported thru	Timothy Kanieski	440-364-4232
Sheffield Lake, OH	Sheffield Lake Annual Community Days Festival	19-Jul-24	2200-2230	Katie DuVerney	(330)650-1776
Cleveland, OH	28th Annual Head of the Cuyahoga Regatta	21-Sep-24	0500-1700	Jen Forbes	(216)308-4183
Lorain, OH	Lorain Independence Day Celebration	4-Jul-24	2130-2200	Katie DuVerney	(330)650-1776
Conneaut, OH	Conneaut Red White and Boom Over Lake Erie	6-Jul-24	2200-2220	Katie DuVerney	(330)650-1776
Madison Township, C	Madison Township Light Up The Park	8-Aug	2130-2200	John Cross	(330)650-1776
Cleveland/Ohio	2024 Pan-American Masters Games (Triathlon)	13-Jul-24	1330-1630	Capt. Drew Ferguson	216-701-5582
Cleveland/Ohio	2024 Pan-American Masters Games (Triathlon)	14-Jul-24	0530-0930	Capt. Drew Ferguson	216-701-5582
Vermilion, OH	Festival of the Fish	14-Jun-24	2130-2300	Sandra Coe	(440)967-4477
Akron, OH	2024 Brogan Open Water Classic	29-Jun-24	0700-1100	Chuck Beatty	(330)808-4821
Lakewood, OH	Lakewood Independence Day	4-Jul-24	2200-2300	Katie DuVerney	(330)650-1776
Cleveland, OH	Whiskey Island Boat Club Parade of Lights	20-Jul-24	2130-2300	Denny Prochaska	440-390-8228
Cleveland/Ohio	2027 Pan-American Masters Games (Rowing)	14-Jul-24	0530-1330	Capt. Drew Ferguson	216-701-5582
Vermilion, Ohio	Vermilion Yacht Club Memorial Day Fleet Parade	27 May 2024	11:30 a.m. - 2:30 p.m.	11AUG 1145-1415 12AUG 0445-1215	Alex Dade
Defiance	38th Maumee River Valley Tri-Adventure Race	5/18/2024	0830-1330	Tracy Girard	(571) 607-7807
Toledo	Toledo CC Firework	6/5/2024	2130-2200	Tracy Girard	(571) 607-7807
Cleveland OH	Blazing Paddles Paddlefest 2024		22-Jun-24 0800-1430	Jim Ridge	216-496-3763
Put-In-Bay	LMYC 48th Annual Race to PIB, OH	5/18/2024	0900-1800	Tracy Girard	(571) 607-7807

## **DETROIT RIVER**

### **LAKE ST. CLAIR/St. Clair River**

Grosse Pointe	Windsor Yacht Club Race #1	5/15/2024	1900-2200	Tracy Girard	(571) 607-7807
St. Clair Shores	Lake Shore Sail Club Spring Sunset Series Race #1	5/15/2024	1900-2200	Tracy Girard	(571) 607-7807
St. Clair Shores	Lake Shore Sail Club Ice-Breaker Regatta (DRYA Coute	5/18/2024	1300-1600	Tracy Girard	(571) 607-7807
St. Clair Shores	Lake Shore Sail Club Sunday Race #1	5/19/2024	1330-1500	Tracy Girard	(571) 607-7807
St. Clair Shores	Lake Shore Sail Club Spring Sunset Series Race #4	6/5/2024	1900-2200	Tracy Girard	(571) 607-7807
St. Clair Shores	Lake Shore Sail Club Thomas Cup Long Distance Race	6/8/2024	1330-1500	Tracy Girard	(571) 607-7807
Grosse Pointe	Windsor Yacht Club Race #4	6/5/2024	1900-2200	Tracy Girard	(571) 607-7807
Detroit	V-POTUS visit - Detroit River	6/8/2024	1600-2000	Tracy Girard	(571) 607-7807
Detroit	Motor City Triathlon	6/9/2024	0730-1030	Tracy Girard	(571) 607-7807
Wyandotte	Wy-Hi Rowing Regatta	5/4/2024	0700-1500	Tracy Girard	(571) 607-7807

### **LAKE HURON**

Essexville	Bayview Yacht Club Sailboat - Wednesday night Racing	6/5/2024	1800-2200	Tracy Girard	(571) 607-7807
Port Huron	Veterans fishing Outing	6/8/2024	0600-1400	Tracy Girard	(571) 607-7807
Harbor Beach	Harbor Beach Can 2 Can Fishing Tournament	5/4/2024	0530-1430	Tracy Girard	(571) 607-7807

### **LAKE MICHIGAN & Green Bay**

N/A

### **LAKE SUPERIOR**



**DNR**  
**MICHIGAN DEPARTMENT OF NATURAL RESOURCES**

**INTEROFFICE COMMUNICATION**

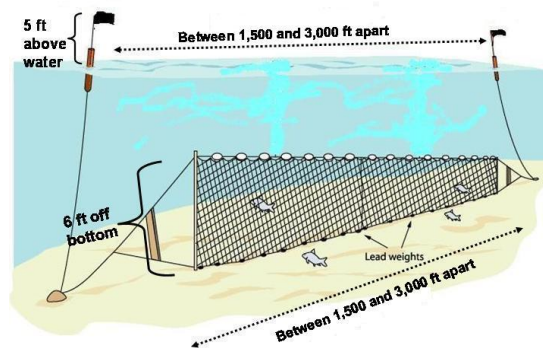
14 June 2024

**TO:** Natural resource agency personnel and mariners operating on Lake Superior

**FROM:** Shawn P. Sitar, Science Officer, RV Lake Char, Marquette Fisheries Research Station

**SUBJECT:** RV Lake Char operations in Lake Superior 17 June-30 August

This is a note to inform you that we will be conducting a deepwater lake trout gill net survey aboard the Research Vessel *Lake Char* in Lake Superior starting 17 June April and should finish by 05 July. We also will be conducting our summer lake trout gill net survey in nearshore waters starting 29 July and should complete by 30 August. We will be setting bottom set gill nets that are 1,500-3,000 ft long, extend about 6 feet from the bottom and are set overnight. Our deepwater sampling stations will be at all depths from about 100 ft to 1,320 ft between Shot Point (Marquette) to the Munising Area and will be within a few miles from shore to 30 miles offshore. Our summer survey will be within a few miles of shore at depths between 90 and 250 ft. Our nets are marked with black and orange flagged staff buoys that are labeled with our agency identification.

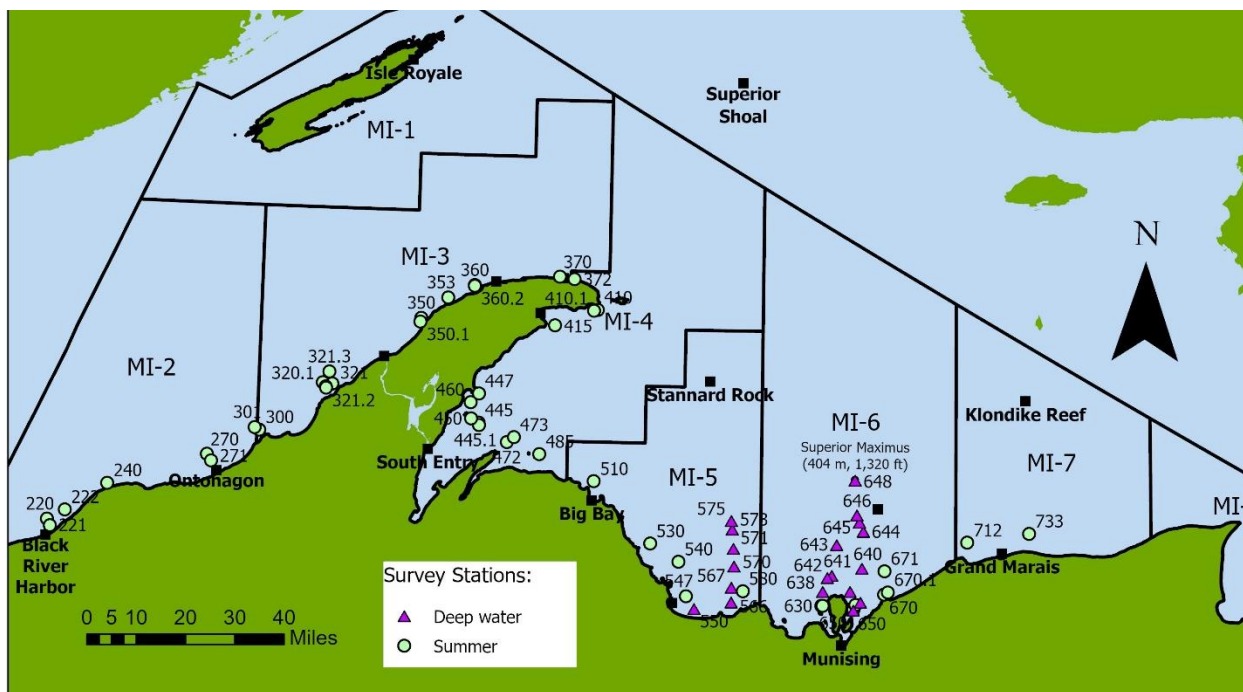


We will be conducting our surveys in the following areas of Lake Superior: Deepwater survey: between Shot Pt (Marquette) and Munising Bay/Pictured Rocks area. Summer Survey: west of

Keweenaw Peninsula from Black River Harbor to Copper Harbor; outer Keweenaw Bay from Bete Grise to the Huron Islands; Big Bay; Marquette; Au Train, Munising, and Grand Marais.

Attached is the cruise schedule, map, and sampling station coordinates for the lake trout survey. Note that weather conditions may delay the sampling dates. Please provide copies of this cruise schedule to all pertinent personnel. Please note that we can be reached via MIDNR 800 MHz Radios on our primary radio channel on Zone B, FIMARQT, or via marine radio channel 16. Our radio call sign is *RV Lake Char*. We can also be reached on the vessel via cell phone number 906-458-6925.

If you have any questions regarding our sampling schedule, please feel free to contact me by e-mail at [sitars@michigan.gov](mailto:sitars@michigan.gov) or by cell phone at (906)-235-1581. Thank you for your cooperation.



RV Lake Char Deepwater and Summer Survey sampling stations June-August 2024.

**2024 Deepwater lake trout survey schedule for RV Lake Char, Marquette Fisheries Research Station (MFRS), Michigan Department of Natural Resources.**

<b>Dates</b>	<b>Column2</b>	<b>Station_no</b>	<b>site</b>	<b>latitude</b>	<b>longitude</b>
06/17	- 06/18/2024	642	FAT 6-6	46° 36.8" N	86° 42.82" W
06/17	- 06/18/2024	638	FAT 6-5A	46° 34.35" N	86° 43.98" W
06/20	- 06/21/2024	644	FAT 6-8	46° 45" N	86° 33.7" W
06/20	- 06/21/2024	643	FAT 6-7	46° 42.6" N	86° 40.5" W
06/24	- 06/25/2024	650	Trout Point (Trout Bay)/ FAT 6-1	46° 31.11" N	86° 36.13" W
06/24	- 06/25/2024	639	FAT 6-3, Grand Island, NE	46° 34.4" N	86° 37" W
06/25	- 06/26/2024	640	FAT 6-4	46° 38.5" N	86° 34" W
06/25	- 06/26/2024	645	FAT 6-9	46° 46.6" N	86° 34.7" W
06/25	- 06/26/2024	648	FAT 6-12, Superior Maximus	46° 54" N	86° 35.9" W
06/26	- 06/27/2024	647	FAT-6-11	46° 50" N	86° 35.37" W
06/26	- 06/27/2024	652	Trout Reef B-Brey (north)/ FAT 6-2	46° 32.51" N	86° 34.33" W
06/26	- 06/27/2024	646	FAT 6-10	46° 47.87" N	86° 35.37" W
06/27	- 06/28/2024	566	Fat 5-2, Shot Point	46° 32.3" N	87° 7.33" W
06/27	- 06/28/2024	567	Fat 5-3, Shot Point	46° 34.9" N	87° 7.33" W
07/01	- 07/02/2024	573	Fat 5-9, Shot Point	46° 45.15" N	87° 7.29" W
07/01	- 07/02/2024	575	Fat 5-11, Shot Point	46° 46.65" N	87° 7.55" W
07/02	- 07/03/2024	570	Fat 5-6, Shot Point	46° 38.65" N	87° 6.72" W
07/02	- 08/22/2020	571	Fat 5-7, Shot Point	46° 41.76" N	87° 6.93" W

**2024 Summer lake trout survey schedule for RV Lake Char, Marquette Fisheries Research Station (MFRS), Michigan Department of Natural Resources.**

<b>Dates</b>	<b>Station_no</b>	<b>site</b>	<b>latitude</b>	<b>longitude</b>
07/29 - 07/30/2024	530	Garlic Island	46°42.32"N	87°28.27"W
07/29 - 07/30/2024	510	Big Bay Point	46°53.09"N	87°43.03"W
07/29 - 07/30/2024	540	Granite Point (Pinnacle)	46°39.21"N	87°20.95"W
07/30 - 07/31/2024	485	Huron Islands (graded mesh)	46°57.63"N	87°57.17"W
07/30 - 07/31/2024	473	Point Abbaye (out)(graded mesh)	47°00.50"N	88°03.86"W
07/31 - 08/01/2024	445	Halberg's Reef	47°02.91"N	88°13.03"W
07/31 - 08/01/2024	447	Traverse Point	47°08.02"N	88°13.18"W
07/31 - 08/01/2024	450	Traverse Island (south)	47°03.60"N	88°15.03"W
08/05 - 08/06/2024	300	Fourteen Mile Point (in)	47°00.38"N	89°09.40"W
08/05 - 08/06/2024	301	Fourteen Mile Point (out)	47°00.80"N	89°10.65"W
08/06 - 08/07/2024	220	Black River Harbor (out)	46°43.00"N	90°02.77"W
08/06 - 08/07/2024	221	Black River Harbor (in)	46°41.90"N	90°01.98"W
08/06 - 08/07/2024	240	Porcupine Mountains	46°49.85"N	89°47.82"W
08/07 - 08/08/2024	270	Ontonagon (out)	46°55.75"N	89°22.57"W
08/07 - 08/08/2024	271	Ontonagon (in)	46°54.63"N	89°21.50"W
08/08 - 08/09/2024	320	Freda (out) (graded mesh)	47°09.53"N	88°52.25"W
08/08 - 08/09/2024	321	Freda (in) (graded mesh)	47°09.00"N	88°51.00"W
08/08 - 08/09/2024	350	Hills Creek	47°21.05"N	88°28.62"W
08/12 - 08/13/2024	360	Great Sand Bay	47°27.10"N	88°15.00"W
08/12 - 08/22/2020	370	Copper Harbor	47°29.00"N	87°52.93"W
08/13 - 08/14/2024	410	Keystone Bay	47°23.26"N	87°42.93"W
08/13 - 08/14/2024	415	Point Isabelle (South Point)	47°20.39"N	87°53.93"W
08/14 - 08/15/2024	580	Laughing Fish Point	46°34.19"N	87°04.39"W
08/19 - 08/20/2024	650	Trout Point A	46°32.00"N	86°35.57"W
08/19 - 08/20/2024	630	Wood Island (graded mesh)	46°31.76"N	86°44.32"W
08/20 - 08/21/2024	670	Grand Portal Point (in)	46°33.88"N	86°28.32"W
08/20 - 08/21/2024	671	Grand Portal Point (out)	46°37.96"N	86°28.22"W
08/21 - 08/22/2024	712	Au Sable Point	46°43.02"N	86°07.04"W
08/21 - 08/22/2024	733	Perry's Landing (graded mesh)	46°44.58"N	85°51.26"W

## CURRENT NINTH DISTRICT BRIDGE MAINTENANCE/ACTIVITIES

### Local Notice to Mariner Week [25/24]

**Note:** Short-term bridge maintenance closures and various activities may only be published [through Broadcast Notice to Mariners](#) and may not be included [in the Local Notice to Mariners](#). Mariners should both *listen* to Broadcast Notice to Mariners (BNM) and *read* Coast Guard Local Notice to Mariners (LNM) available by clicking [HERE](#) for the most recent and complete marine information.

There is a Microsoft Teams meeting with the US Coast Guard, Mariners, and Bridge Owners being held on the last Wednesday of every month at 1300 ET, and **YOU** are welcome to join in.

#### Join on your computer or mobile app

[Click here to join the meeting](#)

#### Or call in (audio only)

[+1 410-874-6742,,515305017#](#)

Phone Conference ID: 515 305 017#

PUBLIC NOTICES FOR 9th District BRIDGES: <https://www.navcen.uscg.gov/D9BN>

#### Please contact us with any questions or concerns:

Blair Stanifer (216) 902-6086 or [William.B.Stanifer@uscg.mil](mailto:William.B.Stanifer@uscg.mil)  
Lee Soule (216) 902-6085 or [Lee.D.Soule@uscg.mil](mailto:Lee.D.Soule@uscg.mil)  
Michael Walker (216) 902-6087 or [Michael.O.Walker2@uscg.mil](mailto:Michael.O.Walker2@uscg.mil)  
FAX: (216) 902-6088

Commander (dpb)  
Ninth Coast Guard District  
1240 E. 9th St. Room 2047B  
Cleveland, Ohio 44199-2001

#### **FEDERAL REGULATIONS DOCKET STATUS**

[Regulations.gov](#) enter the USCG - docket number in the search window to review all comments and documents associated with the project.

USCG-2023-0185 - FR – Sandusky Bay – to Command for Approval  
USCG-2024-0018 - FR -Cherry Street Bridge, Milwaukee River – Pending Legal Review  
USCG-2024-0407 - TD - Manitowoc, WI – Pending Legal Review

#### **GREAT LAKES REGION**

#### **GREAT LAKES, Drawbridge Delay Reports, Chart 14500**

Mariners are requested to submit Reports of Drawbridge Signal/Operations Delays directly to the Ninth Coast Guard District Bridge Branch using the attached form. Reports of signal or drawbridge delays have been processed by Coast Guard Marine Safety Offices in recent years but will now be processed and traced by the Bridge Branch. Reports may be sent by mail, e-mail, or by fax. The mailing address and fax number are on the form.

[08/05] [34/12]



## ST. LAWRENCE SEAWAY

### NY STATE CANAL SYSTEM

(Everything West of St. Johnsville, NY)

#### **NY - NEW YORK STATE CANAL SYSTEM – Erie Canal – Chart 14786**

From April 1, 2023, through **July 1, 2024**, snooper trucks will be working under the E-182 Main Street Bridge, mile 278.93, over the Erie Canal to rehabilitate the bridge in the fully open position. The permitted navigation lights will be removed and temporarily replaced with steady burning yellow lights on the bottom and four-corners of the drawspan. Spotters will warn of approaching vessels and move the man lift to allow vessels to pass.

[12/22]

#### **NY - NEW YORK STATE CANAL SYSTEM - Erie Canal – Chart 14786**

From March 15, 2024, through **January 31, 2025**, daily, contractors will utilize scaffolding and man lifts above low steel of the E144C I-390 Bridge at mile 258.65 and the E144D I-390 Bridge at mile 258.68 over the Erie Canal.

[42/23]

#### **NY - NEW YORK STATE CANAL SYSTEM - Erie Canal – Chart 14786**

From April 8, through **July 31, 2024**, between the hours of 0700 and 1700, Monday through Friday, contractors will utilize snooper trucks under the E-233 Main Street Bridge at Mile 320.82, the E-234 Transit Street Bridge at Mile 564.00, the E236a Lockport Bypass Bridge at Mile 564.17, and the E-248 Webster Street Bridge at Mile 338.44, all over the Erie Canal. Spotters will warn of approaching vessels and move the man lift to allow vessels to pass. Mariners should avoid passing directly under water falling from the bridge.

[02/24]

#### **NY - NEW YORK STATE CANAL SYSTEM - Erie Canal – Chart 14786**

From April 8, through **June 28, 2024**, between the hours of 0700 and 1700, Monday through Friday, contractors will utilize snooper trucks under the E-217 South Carmen Street Bridge at Mile 309.59, the E-237 Robinson Road Bridge at Mile 323.79, the E-238a Fiegle Road Bridge at Mile 325.09, the E-240 Tonawanda Creek Bridge Mile 327.34, all over the Erie Canal. Spotters will warn of approaching vessels and move the man lift to allow vessels to pass. Mariners should avoid passing directly under water falling from the bridge.

[02/24]

#### **NY - NEW YORK STATE CANAL SYSTEM - Erie Canal – Chart 14786**

From May 6 through **August 31, 2024**, between the hours of 0700 and 1700, Monday through Friday Snooper trucks will be washing the all the bridges from the E-29 Lansing Road Bridge at Mile 74.94 to the E-52 Erie Boulevard Bridge at Mile 115.08 over the Erie Canal. Spotters will warn of approaching vessels and move the man lift to allow vessels to pass. Mariners should avoid driving through or under clean falling water from the bridge.

[11/24]

#### **NY - NEW YORK STATE CANAL SYSTEM - Erie Canal – Chart 14786**

From June 10, through **November 8, 2024**, between the hours of 0600 and 2100, daily, a 30-foot Harcon will be inspecting all bridges from E101 Leach Road Bridge at Mile 221.01 to E211 County Road 5 Bridge at Mile 304.13 over the Erie Canal. The Harcon will monitor VHF-FM marine Channel 16 and will move to accommodate vessels if a 30-minute advance notice is provided.

[17/24]

#### **NY - NEW YORK STATE CANAL SYSTEM - Cayuga – Seneca Canal – Chart 14786**

From July 7, through **September 30, 2024**, scaffolding that hangs approximately 6-feet below low steel will be



installed under one half of the S6, Ovid Street Bridge at Mile 8.65, over the Cayuga – Seneca Canal.

[18/24]

**NY - NEW YORK STATE CANAL SYSTEM – Erie Canal, Cayuga – Seneca Canal, and Oswego Canal, Chart 14876**

From May 20 through **September 27, 2024**, between the hours of 0730 and 1700, Monday through Friday a 35-foot Harcon will be inspecting the bridges between the E-64 Brewerton Road Bridge at Mile 150.85 and the E-92 Armitage Road Bridge at Mile 205.59 over the Erie Canal, including the S1 US 20 Bridge at Mile 2.97 to the S10 Gorham Street, Mile 11.71, over the Cayuga-Seneca Canal, and the O05 Humansville Road Bridge, over the Oswego Canal. The Harcon will move with a 30-minute advance notice. Mariners should provide advance notice on VHF -FM Marine Channel 16.

[18/24]

**NY - NEW YORK STATE CANAL SYSTEM – Erie Canal, Cayuga – Seneca Canal, and Oswego Canal, Chart 14876**

From May 20 through **August 31, 2024**, between the hours of 0800 and 2000 daily, contractors will be utilizing snooper trucks to wash the underside of all bridges from the E-99 CSXT Railroad Bridge at Mile 219.94 through E-212 Marshal Road Bridge at Mile 305.63 over the Erie Canal. Spotters will warn works of approaching vessels and move the man lift to allow vessels to pass. Mariners should avoid navigating under large amounts of falling water.

[20/24]

**NY - NEW YORK STATE CANAL SYSTEM - Erie Canal – Chart 14786**

From September 29, 2024, through **October 1, 2024**, inspectors will install scaffolding under the E-101 Leach Road Bridge at Mile 221.01 over the Erie Canal that extends approximately 6-feet below low steel under one half of the bridge.

[21/24]

**NY - NEW YORK STATE CANAL SYSTEM - Erie Canal – Chart 14786**

On **June 24, 2024**, between the hours of 0730 and 1600, divers will be inspecting the underwater portions of the E-161A Buckeye Pipeline Bridge at Mile 262.24 over the Erie Canal. Spotters will warn of approaching vessels and move the divers to allow vessels to pass.

[24/24]

**NY - NEW YORK STATE CANAL SYSTEM - Erie Canal – Chart 14786**

From July 8, 2024, through **November 30, 2024**, scaffolding will be installed under the E-234 Transit Road Bridge at Mile 320.97 over the Erie Canal that hangs approximately 3-feet below low steel.

[24/24]

**NY - NEW YORK STATE CANAL SYSTEM - Erie Canal – Chart 14786**

From March 1, 2025, through **June 30, 2025**, scaffolding will be installed under the E-234 Transit Road Bridge at Mile 320.97 over the Erie Canal that hangs approximately 3-feet below low steel.

[24/24]

**NY - NEW YORK STATE CANAL SYSTEM - Erie Canal – Chart 14786**

From July 22 through **July 26, 2024**, between the hours of 0730 and 1700, daily, a 35-foot Harcon will be inspecting the E-83 State Route 34 Bridge at mile 188.87 over the Erie Canal. The Harcon will monitor VHF-FM marine Channel 16 and move to accommodate vessel traffic with a 30-minute advance notice of arrival.

[25/24]

[LAKE ONTARIO](#)

**NY - LAKE ERIE – Rochester Harbor – Chart 14815**

On **September 15, 2024**, between the hours of 0745 and 0930, the O'Rourke Bridge at Mile 1.25 over the Genesee River will be secured to masted navigation in conjunction with the Rochester Marathon. Vessels able to pass under the bridge without an opening may do so at any time.

[16/24]

**LAKE ERIE - MAHONING RIVER - NIAGARA RIVER- ALLEGHENY RIVER**

**NY - LAKE ERIE – Buffalo Harbor – Chart 14833**

From January 1 through **March 31, 2025**, the Canadian National International Railroad Bridge at mile 3.8 over the Black Rock Canal will be secured to masted navigation for maintenance. Vessels able to pass under the bridge without an opening may do so at any time.

[30/23]

**NY - LAKE ERIE – Niagara River – Chart 14833**

From August 28, 2023, through **July 26, 2026**, scaffolding that extends approximately 3-feet below low steel will be installed under the South Grand Island Bridge at Mile 3.40 and the North Grand Island Bridge at Mile 18, both over the Niagara River. A 16-foot by 32-foot materials barge and a 4-foot by 40-foot temporary dock will be used under the bridges.

[32/23]

**OH - LAKE ERIE – Cleveland Harbor – Chart 14839**

From June 1, 2024, through **September 30, 2026**, daily scaffolding will be installed under the I-490 Bridge at mile 4.79 over the Cuyahoga River that hangs approximately 4-feet below low steel. Snooper vehicles and manlifts will be used. Spotters will warn workers of approaching vessels and move the manlift to allow vessels to pass.

[43/23]

**OH - LAKE ERIE – Niagara River \_ Chart 14822**

From April 22 through **July 8, 2024**, traveling platforms that are 21-feet wide and hang approximately 4-feet below low steel will be used under the Canadian National Railroad Bridge at mile 33.0 over the Niagara River.

[14/24]

**OH - LAKE ERIE – Cleveland Harbor – Chart 14839**

On **July 20, 2024**, between the hours of 1000 and 1040, the Carter Road Bridge at mile 2.43 over the Cuyahoga River will be secured to masted navigation in conjunction with the Parrot Head Race. Vessels able to pass under the bridge without an opening may do so at any time.

[15/24]

**NY - LAKE ERIE – Niagara River – Chart 14833**

From June 15 through **September 30, 2024**, between the hours of 0700 and 1600, Monday through Friday. A 100-foot by 34-foot barge will be washing the South Grand Island Bridge at Mile 3.40 and the North Grand Island Bridge at Mile 18, both over the Niagara River. Mariners should avoid passing under clean falling water. The barge will monitor VHF-FM Marine Channel 16 and will make passing arrangements with vessels as needed.

[16/24]

**OH - LAKE ERIE – Cleveland Harbor – Chart 14839**

On **July 9, 2024**, between the hours of 0800 and 1800 Columbus Road Bridge at mile 1.93 over the Cuyahoga River will require a 2-hour advance notice for openings while inspectors are working at the bridge. Mariners should provide advance notice directly to the drawtender.

[18/24]

**OH - LAKE ERIE – Toledo Harbor – Chart 14847**

On **August 4, 2024**, between the hours of 0900 and 1100, the Martin Luther King Jr. Memorial Bridge at Mile 4.30 over the Maumee River will be secured to masted navigation in conjunction with the Toledo Jeep Fest Event. Vessels able to pass under the bridge without an opening may do so at any time.

[21/24]

**OH - LAKE ERIE – Toledo Harbor – Chart 14847**

On **September 15, 2024**, between the hours of 1000 and 1130, the Martin Luther King Jr. Memorial Bridge at Mile 4.30 over the Maumee River will be secured to masted navigation in conjunction with the ProMedica Be Fast Event. Vessels able to pass under the bridge without an opening may do so at any time.

[21/24]

**OH - LAKE ERIE – Toledo Harbor – Chart 14847**

On **July 4, 2024**, between the hours of 0730 and 0900, the Craig Memorial Bridge at Mile 3.30 over the Maumee River will be secured to masted navigation in conjunction with the WTOL, River Run 10K event. Vessels able to pass under the bridge without an opening may do so at any time.

[21/24]

**OH - LAKE ERIE – Toledo Harbor – Chart 14847**

On **July 4, 2024**, between the hours of 2200 and 2230, Martin Luther King Jr. Memorial Bridge at mile 4.30 over the Maumee River will be secured to masted navigation in conjunction with the City of Toledo’s Fourth of July Fireworks. Vessels able to pass under the bridge without an opening may do so at any time.

[22/24]

**OH - LAKE ERIE – Cleveland Harbor – Chart 14839**

Ref: 89 FR 46021

The Coast Guard is creating a new operating schedule to govern all movable bridges over the Cuyahoga River. The Coast Guard is also establishing new rules that will assist mariners signal for and anticipate bridge openings.

If you have questions on this final rule, call or email Mr. Lee D. Soule, Bridge Management Specialist, Ninth Coast Guard District; telephone 216-902-6085, email Lee.D.Soule@uscg.mil.

To view documents mentioned in this preamble as being available in the docket, go to <https://www.regulations.gov>. Type the docket number (USCG-2023-0188) in the “SEARCH” box and click “SEARCH”. In the Document Type column, select “Supporting & Related Material.”

**§ 117.848 Cleveland Harbor.**

**(a) The Norfolk Southern Railroad Bridge, mile 0.76, will open on signal. (1) The bridge owner will maintain and monitor a VHF-FM Marine Radio, and telephone.**

**(2) The bridge will display a clock that counts down the estimated time of the next bridge opening that is visible to vessels approaching from the upriver or downriver side of the bridge.**

**(3) The bridge will also display a sign readable from vessels approaching the bridge from upriver or downriver and readable for 500 feet that states:**

**(i) the name of the bridge;**

**(ii) the river mile;**

**(iii) the opening signal of the bridge is one prolonged blast followed by one short blast of the horn or VHF-FM Marine Radio Channel 16, or by calling the number posted by the owner.**

**(b) All remaining moveable vehicle and railroad bridges on the Cuyahoga River will open on signal, except from December 15 through March 31 when the bridges will open if a 12-hour advance notice is provided. Said bridges include: Willow Avenue Bridge at Mile 1.02; Center Street Bridge, mile 1.28; the**

**Columbus Road Bridge, mile 1.93; the Flats Industrial Railroad Bridge, mile 2.24; the City of Cleveland Railroad Bridge, mile 2.42; the Carter Road Bridge, mile 2.43; the Norfolk Southern Railroad Bridge the West 3rd Street Bridge, mile 3.42; the CSX Railroad Bridge, mile 4.75; the Cleveland Cliffs Railroad Bridge #1, mile 5.42; and the Wheeling & Lake Erie Railroad Bridge.**

**(c) The Voinovich Pedestrian Bridge, at the mouth of North Coast Harbor, will open on signal except from December 15 through March 31 when the bridge will open if a 12-hour advance notice is provided.**

This rule is effective **June 27, 2024**.

#### **OH - LAKE ERIE – Cleveland Harbor – Chart 14839**

On **October 5, 2024**, between the hours of 0700 and 1400, the Carter Road Bridge at Mile 2.43 over the Cuyahoga River will be secured to masted navigation in conjunction with the Towpath Marathon. Vessels able to pass under the bridge without an opening may do so at any time.

[23/24]

#### **DETROIT RIVER - LAKE ST. CLAIR - ST. CLAIR RIVER – RIVER ROUGE**

**\*\*\*\*\*REVISED\*\*\*\*\***

#### **MI - DETROIT RIVER – Main Channel – Chart 14848**

From November 1, 2022, through **August 18, 2024**, contractors will be constructing the Gordie Howe International Bridge at mile 16.7 over the Detroit River. No equipment will be placed in the water. Overhead work will have temporary steady burning yellow lights to mark new construction. A moving platform with quick flashing red lights and orange or red ball fenders on the bottom four corners with a safety net that hangs approximately 15-feet below low steel will be constructing the bridge. Mariners should avoid passing directly under the platform at any time. Snooper type vehicles will be utilized on the bridge throughout construction. Spotters will warn of approaching vessels and move the man lift to allow vessels to pass. When construction is completed and all equipment removed, the final vertical clearances for the bridge will be 152-feet for the center 100-feet of the navigation channel. No less than 137-feet of vertical clearance will be available at the channel limits. Vertical clearances are based on IGLD85.

[47/20] [07/22] [02/24]

#### **MI – SAINT CLAIR RIVER – Chart 14852**

From June 14, 2024, through **December 20, 2025**, scaffolding that hangs approximately 4-feet below low steel will be installed under the Blue Water Bridge at Mile 39.1 over the St. Clair River. Steady burning yellow lights will warn mariners of the temporary reduction in clearances.

[22/24]

#### **LAKE HURON**

**\*\*\*\*\*REVISED\*\*\*\*\***

#### **MI - LAKE HURON – Saginaw River – Chart 14867**

From April 19, through **November 30, 2024**, the Independence Street Bridge at Mile 3.88, over the Saginaw River will have two barges 80-foot by 40-foot or smaller working under the bridge. If needed the barges will move with a 2-hour advance notice. Mariners should provide advance notice for the barges by calling 608-425-0171.

[17/23] [47/23] [17/24]

#### **MI - LAKE HURON – Saginaw River – Chart 14867**

From December 1, 2024, through **March 31, 2025**, the Independence Bridge, mile 3.88, over the Saginaw River will be secured to masted navigation. Vessels able to pass under the bridge without an opening may do so at any time. Two 80x40-foot barges will be working under the bridge, and they will move if a 2-hour advance notice is provided by calling 608-425-0171. During the winter the ice will be degraded due to the movement of

barge and the ice under the bridge should be considered unsafe for pedestrians or vehicles.

[21/24]

## [SAINT MARY'S RIVER](#)

### **MI – SAINT MARY'S RIVER – Chart 14884**

from June 17, through **June 21, 2024**, between the hours of 0900 and 1600 daily, Divers will be inspecting the underwater portions of the International Highway Bridge over the Saint Mary's Falls and River. Spotters on a dive boat will monitor VHF-FM Marine Channel 16 and move the divers to allow vessels to pass.

[21/24]

## [LAKE MICHIGAN - EAST](#)

### **MI - LAKE MICHIGAN – St Joseph River – Chart 14930**

On **July 3, 2024**, from 2100 to 0100, the Blossomland/M-63 Bridge at Mile 0.92 and the Twin Cities Bicentennial Bridge at Mile 1.30, over the Saint Joseph River will be secured to masted navigation in conjunction with the Twin Cities Fourth of July Celebration. Vessels able to pass under the bridge(s) without an opening may do so at any time.

[17/24]

### **MI - LAKE MICHIGAN – Grand Haven – Chart 14933**

From 2200 on July 4 to 0200 on **July 5, 2024**, and again from 2200 on August 3 to **0200 on August 4, 2024**, the US 31 Bridge at Mile 2.89 over the Grand River will be secured to masted navigation in conjunction with the 4<sup>th</sup> of July fireworks and the Coast Guard Day celebrations.

[19/24]

### **IN - LAKE MICHIGAN – Michigan City – Chart 14926**

From 2130 to 2230 on **July 4, 2024**, the Franklin Street Bridge at Mile 0.50 over Trail Creek will be secured to masted navigation in conjunction with the City Fourth of July Fireworks. Vessels able to pass under the bridge without an opening may do so at any time.

[21/24]

### **IN - LAKE MICHIGAN – Michigan City – Chart 14926**

From 2130 to 2230 on **August 3, 2024**, the Franklin Street Bridge at Mile 0.50 over Trail Creek will be secured to masted navigation in conjunction with the Grand Prix Boat Parade. Vessels able to pass under the bridge without an opening may do so at any time.

[21/24]

### **MI - LAKE MICHIGAN – Grand Haven – Chart 14933**

From June 3 through **June 30, 2024**, between the hours of 0700 and 1600, Monday through Friday, a 20-foot by 8-foot barge will be working under the U.S. Route 31 Bridge at Mile 2.89, over the Grand River. The barge will monitor VHF-FM Marine Channel 16 and will move as needed to accommodate vessels traffic. The opening schedule of the bridge will not be affected.

[22/24]

## [LAKE MICHIGAN – MICHIGAN CITY & INDIANA HARBOR & GARY HARBOR](#)

### **IL - LAKE MICHIGAN – Indiana Harbor Canal – Chart 14927**

From November 2 through **November 17, 2024**, and again from December 7 through **December 21, 2024**, on each Saturday at 0001 through each Sunday at 2359, the Elgin, Joliet, and Eastern Railroad Bridge at Mile 0.68

over the Indiana Harbor Canal will be secured to masted navigation. Vessels able to pass under the bridge without an opening may do so at any time.

[52/23]

## LAKE MICHIGAN – CALUMET RIVER & LITTLE CALUMET RIVER

\*\*\*\*\*REVISED\*\*\*\*\*

### **IL - LAKE MICHIGAN – Calumet Harbor – Chart 14927**

From September 7, 2023, through **December 9, 2024**, scaffolding will be installed under the Indiana Avenue Bridge at Mile 10.80 (CORPS MILE 322.3) over the Little Calumet River that hangs approximately 1-foot below low steel.

[34/23] [19/24]

## CHICAGO RIVER – MAIN RIVER CHANNEL, NORTH BRANCH, NORTH SHORE CHANNEL, AND SOUTH BRANCH AND SOUTH FORK OF SOUTH BRANCH

### **IL - LAKE MICHIGAN – Chicago Harbor – Chart 14927**

From March 18 through **July 31, 2024**, between the hours of 0600 and 1800 Monday through Saturday, a 125-foot by 80-foot barge will be working under the Franklin-Orleans Street Bridge at Mile 1.47 (325.7 CORPS MILE) over the Main Branch of the Chicago River. The barge will move if provided a 1-hour advance notice directly to the barge.

[09/24]

### **IL - LAKE MICHIGAN – Chicago Harbor – Chart 14927**

From April 1 through **June 28, 2024**, between the hours of 0630 and 1730, Monday through Friday, the Lake Shore Drive Bridge at Mile 0.32 (CORPS MILE 326.9) over the Main Branch of the Chicago River will operate one leaf on signal and both leaves will open if a 2-hour advance notice is provided directly to the drawtender. A 40-foot by 40-foot barge will be performing maintenance under one leaf.

[13/24]

### **IL - LAKE MICHIGAN – Chicago Harbor – Chart 14927**

From July 22 through **September 20, 2024**, between the hours of 0600 and 1800, Monday through Saturday a 30-foot Harcon will be inspecting the following groups of bridges in Chicago and Calumet Harbors: 95<sup>th</sup> Street Bridge at Mile 1.09 (CORPS MILE 332.1) to the Indiana Avenue Bridge at Mile 10.80 (CORPS MILE 322.3) over the Calumet and Little Calumet Rivers, the South Western Avenue Bridge at Mile 6.7 (CORPS MILE 320.6) and the South Cicero Avenue Bridge at Mile 10.0 (CORPS MILE 317.3) over the Chicago Sanitary and Ship Canal and All bridges over the Chicago River including all its branches.

[20/24]

## CALUMET SAG CHANNEL

\*\*\*\*\*REVISED\*\*\*\*\*

### **IL - LAKE MICHIGAN – Calumet-SAG Channel – Chart 14927**

From February 20, 2024, through **November 1, 2024**, scaffolding that hangs approximately 6-feet below low steel will be installed under one half of the 127<sup>th</sup> Street Bridge at Mile 18.81 (CORPS MILE 314.2) over the Calumet-SAG Channel. A 40-foot by 50-foot barge will be used at the bridge and will move if provided a 30-minute advance notice of arrival on VHF-FM marine Channel 16.

[03/24] [04/24] [10/24]

### **IL - LAKE MICHIGAN – Calumet-SAG Channel – Chart 14927**

From June 14 through **June 18, 2024**, between the hours of 0900 and 1500 each day, inspectors will be using snooper vehicles under the Cicero Avenue Bridge at Mile 18.08 (CORPS MILE 314.9) over the Calumet-SAG Channel. Spotters will warn of approaching vessels and move the man lift to allow vessels to pass.

[25/24]

### **IL - LAKE MICHIGAN – Calumet-SAG Channel – Chart 14927**

From June 28 through **July 17, 2024**, daily and again from October 16, through November 6, 2024, daily, Contractors will utilize snooper vehicles under the Northern Illinois Toll Highway Bridge at Mile 17.35 (CORPS MILE 315.6), over the Calumet-SAG. Spotters will warn of approaching vessels and move the man lift to allow vessels to pass.

[25/24]

## **CHICAGO SANITARY AND SHIP CANAL, KANKAKEE RIVER & ROCK RIVER**

(Lake Michigan to Mile 36.2/291.1)

\*\*\*\*\*REVISED\*\*\*\*\*

### **IL - LAKE MICHIGAN – Chicago Sanitary and Ship Canal – Chart 14927**

From January 15, through **August 31, 2025**, scaffolding will be installed that hangs approximately 3-feet below low steel of the South-Central Avenue Bridge at mile 11.1 (CORPS MILE 316.2) over the Chicago Sanitary and Ship Canal.

[03/24] [23/24]

## **LAKE MICHIGAN – WEST**

### **WI - LAKE MICHIGAN – Milwaukee Harbor – Chart 14924**

From March 25 through **August 30, 2024**, between the hours of 0700 and 1600, Monday through Friday, two barges 70-feet by 50-feet or smaller will be painting the Holton Street Bridge, mile 2.84, over the Milwaukee River. The barges will move to accommodate vessels if a 2-hour advance notice is provided by calling 262-366-5121.

[11/24]

### **WI - LAKE MICHIGAN – Manitowoc Harbor – Chart 14922**

From May 30, 2024, through **September 10, 2024**, The Eighth Street Bridge, mile 0.29 and the Tenth Street Bridge, mile 0.43, over the Manitowoc River at Manitowoc, Wisconsin shall open on signal, except that from 0700 to 0800 and 1100 to Noon. and again from 1600 to 1700 weekdays (except Federal Holidays), the bridges do not need to open for vessels. From 2200 to 0400 daily the bridges will open on signal if provided a 2-hour advance notice of arrival from vessels by calling 920-686-6910. The Eighth Street Bridge, mile 0.29 will be operated remotely by the Tenth Street Bridge Drawtender. During this test deviation comments will be received by emailing [lee.d.soule@uscg.mil](mailto:lee.d.soule@uscg.mil).

[22/24]

### **WI - LAKE MICHIGAN – Racine Harbor – Chart 14925**

On **July 4, 2024**, between the hours of 0730 and noon, then again between the hours of 2100 and 2230, Main Street Bridge at Mile 0.31 and the State Street Bridge at Mile 0.53 over the Root River will be secured to masted navigation in conjunction with the Fourth of July Parade and then the fireworks display. Vessels able to pass under the bridge without an opening may do so at any time.

[24/24]



### **WI - LAKE MICHIGAN – Milwaukee Harbor – Chart 14924**

From July 22, 2024, through **October 31, 2024**, one bridge leaf of the Cherry Street Bridge at Mile 2.29 over the Milwaukee River will be secured to masted navigation while the other bridge leaf operates normally for the passage of vessels. From November 1, 2024, through April 1, 2025, both leaves will be secured to masted navigation. Vessels able to pass under the bridge without an opening may do so at any time.

[24/24]

### **LAKE MICHIGAN – Sturgeon Bay Ship Canal – Green Bay – Fox River – Wolf River**

#### **WI - LAKE MICHIGAN – Green Bay – Chart 14918**

From December 1, 2026, through **March 31, 2027**, the Tilleman Memorial Bridge at mile 2.27 over the Fox River will be secured to masted navigation. Vessels able to pass under the bridge without an opening may do so at any time.

[49/23]

\*\*\*\*\*REVISED\*\*\*\*\*

#### **WI - LAKE MICHIGAN – Fox River – Chart 14916**

from October 8, 2026, through **April 8, 2027**, the Wisconsin Street Bridge at mile 56.72 over the Fox River will be secured to masted navigation and scaffolding that hangs approximately 4-feet will be installed under the bridge. Vessels able to pass under the bridge safely, without an opening may do so at any time.

[02/24] [03/24]

#### **WI - LAKE MICHIGAN – Green Bay – Chart 14918**

From 1300 to 2330 on **July 4, 2024**, the Ray Nitschke Bridge at Mile 1.58 over the Fox River will be secured to masted navigation in conjunction with the City of Green Bay Fourth of July Celebration. Vessels able to pass under the bridge without an opening may do so at any time.

[05/24]

#### **WI - LAKE MICHIGAN – Fox River – Chart 14916**

from June 24 through **June 27, 2024**, between the hours of 0700 and 1600 daily, the Jackson Street Bridge at Mile 56.22 over the Fox River will be secured to masted navigation for maintenance. Vessels able to pass under the bridge without an opening may do so at any time.

[25/24]

### **LAKE SUPERIOR**

#### **WI - LAKE SUPERIOR – Duluth-Superior Harbor – Chart 14975**

On **July 4, 2024**, between the hours of 1900 to 2330, the Duluth Ship Canal Bridge at mile 0.24 over the Duluth Ship Canal and from 2030 to 2330 the Minnesota Slip Bridge at the mouth of Minnesota Slip, will be secured to masted navigation. Vessels able to pass under either bridge without an opening may do so at any time. A rain date of July 5, 2024, may be authorized.

[05/24]

#### **WI - LAKE SUPERIOR – Duluth-Superior Harbor – Chart 14975**

From August 5 through **August 9, 2024**, between the hours of 0700 to 1700, Daily, Inspectors will use Unmanned Aerial Vehicles and snooper trucks under the Bong Bridge at mile 5.20 over the St. Louis Bay and River. Spotters will warn of approaching vessels and move the equipment to allow vessels to pass.

[19/24]

#### **WI - LAKE SUPERIOR – Duluth-Superior Harbor**

From July 8 through **July 22, 2024**, between the hours of 0900 and 1500 each day, inspectors will utilize snooper trucks under the John A. Blatnik, I-535 Bridge at mile 2.74 over the St. Louis Bay and River. Spotters will warn of approaching vessels and move the man lift to allow vessels to pass.

[23/24]



**RAINY LAKE, RAINY RIVER, LAKE OF THE WOODS, WISCONSIN RIVER, MISSISSIPPI RIVER, & RED RIVER OF THE NORTH**

(Revised 04/23) NINTH DISTRICT DRAWBRIDGE SIGNALS OR OPERATIONAL DELAYS FORM

TO: Commander (dpb)  
Ninth Coast Guard District  
1240 E. 9<sup>th</sup> Street – Room 2047b  
Cleveland, Ohio 44199-2060  
Phone: (216) 902-6087  
Fax: (216) 902-6088  
E-Mail: [William.B.Stanifer@uscg.mil](mailto:William.B.Stanifer@uscg.mil), [Lee.D.Soule@uscg.mil](mailto:Lee.D.Soule@uscg.mil), and [Michael.O.Walker2@uscg.mil](mailto:Michael.O.Walker2@uscg.mil)

DATE: \_\_\_\_\_  
*NOTE: Reports of Delay will be processed only when all items are fully addressed and reports submitted within 15 days of reported delay / difficulty. Attach additional sheets if necessary.*

CONFIDENTIALITY: Please check here if you wish to keep names of vessels and persons confidential

1. DATE OF DELAY: \_\_\_\_\_ 2. VESSEL NAME: \_\_\_\_\_ 3.  INBOUND  OUTBOUND

(\*\*\*NOTE: You must provide the following from Coast Pilot 6.\*\*\*)

4. BRIDGE NAME \_\_\_\_\_ 5. WATERWAY \_\_\_\_\_

6. MILE MARKER \_\_\_\_\_

7. WHAT TIME DID YOU ARRIVE AT THE BRIDGE? \_\_\_\_\_ 8. DID YOU SIGNAL FOR AN OPENING AT THAT TIME?  Y  N

9. HOW DID YOU SIGNAL?  Sound signal (Whistle, horn, megaphone, hailer, etc.) \_\_\_\_\_

(Check all that apply)  Visual signal (Flag or Light) \_\_\_\_\_

Radio telephone (Specify Frequency) \_\_\_\_\_

10. WHEN DID THE BRIDGE REPLY? \_\_\_\_\_ 11. WHAT DID THE DRAWTENDER SAY? \_\_\_\_\_

12. DID YOU COMMUNICATE WITH THE BRIDGE AFTER YOUR ARRIVAL? PLEASE PROVIDE DETAILS INCLUDING TIMES, WHAT YOU SAID, AND WHAT THE BRIDGE SAID? \_\_\_\_\_

13. WHAT TIME DID THE BRIDGE OPEN? \_\_\_\_\_ 14. WHAT TIME DID YOU START THROUGH? \_\_\_\_\_

15. WHAT TIME DID YOU CLEAR? \_\_\_\_\_ 16. WHAT ACTIONS DID YOU TAKE WHILE YOU WAITED FOR THE BRIDGE TO OPEN (e.g. tie up, hold position, use thrusters, return to dock)? \_\_\_\_\_

17. DESCRIBE ANY WEATHER OR WATER CONDITIONS THAT AFFECTED MANUEVERABILITY WHILE YOU WAITED? \_\_\_\_\_

18. DESCRIBE WHETHER ANY PEDESTRIANS, VEHICLES, OR TRAINS WERE STOPPED ON THE BRIDGE OR CROSSING THE BRIDGE? PROVIDE AS MUCH DETAIL AS POSSIBLE. \_\_\_\_\_

19. PROVIDE ANY ADDITIONAL INFORMATION YOU THINK WOULD BE HELPFUL? \_\_\_\_\_

20. YOUR NAME, E-MAIL, PHONE NUMBER, AND ADDRESS: \_\_\_\_\_

\_\_\_\_\_  
SIGNATURE OF REPORTING SOURCE



**2024**  
**GREAT LAKES SINGLEHANDED SOCIETY**  
**46th PORT HURON / 28<sup>th</sup> CHICAGO TO MACKINAC SOLO CHALLENGE**

## **SAILING INSTRUCTIONS**

**1. ORGANIZING AUTHORITY**

The Great Lakes Singlehanded Society (GLSS) shall be the Organizing Authority of the Challenges.

**2. START DATE**

The starts of the GLSS Port Huron to Mackinac and Chicago to Mackinac Challenges shall be Saturday, June 22, 2024.

**3. RULES**

The Challenges shall be governed by the current Racing Rules of Sailing (RRS), the Notice and Conditions of Race and the Sailing Instructions.

**4. SKIPPERS**

Skippers shall consist of one person who has fulfilled the qualification requirements in the Notice of Race and has been approved by the Great Lakes Singlehanded Society (GLSS) Board of Directors.

**5. ELIGIBILITY**

5.1 The Challenge is open by invitation of the Great Lakes Singlehanded Society to boats in compliance with:

- (a) The 2024 Notice and Conditions of Race and
- (b) The 2024 Required Equipment List.

5.2 Yachts may optionally fly their national flag of registry and a visiting country courtesy flag if so desired. US Sailing RRS 55 does not apply to the display or signaling of either of these flags for this event.

**6. TIME ZONES**

6.1 All times shown in the Notice of Race and these Sailing instructions involving pre-Race and on-the-water requirements, including the starts, call-ins and finishing times shall be as follows:

- (a) Competitors in the Challenge(s) originating in Port Huron shall use Eastern Daylight Time (EDT)
- (b) Competitors in the Challenge(s) originating in Chicago shall use Central Daylight Time. (CDT)

6.2 All onshore activities at Mackinac Island shall be expressed in Eastern Daylight Time (EDT)

**7. NOTICES TO SKIPPERS**

7.1 Prior to the start, Notices to Skippers shall be posted on the Official Notice Boards located on Yacht Scoring website <https://yachtscoring.com/emenu.cfm?eid=15871> and at:

- (a.) The Vintage Tavern, 103 Michigan St., Port Huron, MI, during registration on Friday, June 21, 2024
- (b) The Columbia Yacht Club, 111 N. Lakeshore Drive, Chicago, IL 60601, during registration on Friday, June 21, 2024

7.2 After the start, Notices to Skippers shall be posted on the Official Notice Board of the Great Lakes Singlehanded Society Race Committee located at the Mackinac Island Yacht Club.

## 8. CHANGES IN SAILING INSTRUCTIONS

Changes in the Sailing Instructions after the Skippers' Meeting shall be broadcast by the Race Committee on VHF Channel 72 prior to the start of the Challenge.

## 9. THE START

9.1 A complete description of the starting area shall be provided at the Skippers' Meeting.

9.2 Yachts not starting must stay at least 200 yards away from the starting area.

9.3 The Starting Sequence signal shall be made in accordance with RRS 26 except that the warning signal will be given 10 minutes before the starting signal. Starting times, starting sequences and division splits shall be provided at the Skippers' Meeting.

9.4 All Skippers shall check in with the Race Committee via VHF Channel 72 prior to the start

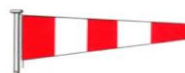
## 10. START TIME

10.1 The warning signal of the Challenges beginning in Port Huron shall be 9:50 AM (EDT). The start shall be at 10:00 AM (EDT)

10.2 The warning signal of the Challenges beginning in Chicago shall be 8:50 AM (CDT). The start shall be at 9:00 AM (CDT)

## 11. POSTPONEMENT

Skippers shall be notified of a postponement from the Race Committee with the display of the code shape AP



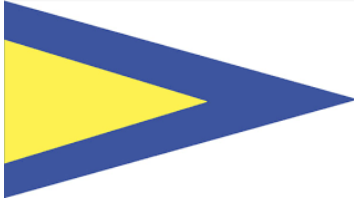
(vertical red and white stripes) accompanied with two sounds

## 12. RECALLS

12.1 Individual Recalls - Boats on the course side before the start shall be signaled in accordance with RRS 29.1, Flag X (blue cross on white background) with one sound. In addition, the Race Committee shall attempt to notify boats on the course side before the start on VHF Channel 72. Boats failing to return and start properly shall be assessed a 30-minute penalty plus the amount of time started early in lieu of disqualification. Failure to hear a courtesy hail shall not be grounds for redress.



12.2 General Recalls - A general recall for a division shall be made in accordance with RRS 29.3. The Race Committee shall signal a general recall by displaying the first substitute flag (yellow triangle on blue background) and two sounds. The warning signal for a new start for the recalled class shall be made one minute after the first substitute is removed (one sound) and the starts for any succeeding divisions shall follow the new start.



2024 3/7

### 13 THE STARTING AREA

13.1 Port Huron Challenges: The starting line shall be approximately 1.5 miles North of SARNIA YACHT CLUB at the "M" mark which is located at 43 01.306 N 82 23.598 W. The line shall be between the mark on the west end of the starting line and the Race Committee boat located at the east end of the starting line.

13.2 Chicago Challenges: The starting line shall be east of the south end of the Chicago Harbor outer break wall. The line shall be between a point on the south end of the Chicago Harbor outer break wall and the Race Committee boat located at the east end of the starting line.

### 14. THE COURSES AND MARKS

#### 14.1 PORT HURON CHALLENGE:

- (a) Start at Port Huron as stated in 13.1 to Finish at Mackinac Island
- (b) Boats shall perform a navigational rounding of the Goderich mark (43 43.3 N and 81 46.2 W) leaving it to port before proceeding on toward Mackinac Island. A full description of the mark shall be provided at the Skipper's meeting
- (c) Skippers shall record in the boat's log and on the Rounding Report, provided at the Skippers Meeting, the following information: the time of the Goderich rounding, the identity and time of rounding of both the boats ahead and astern if known. Boats shall confirm the identity of the boat ahead and astern by **VHF Channel 72** if possible.
- (d) Thunder Bay Island and Bois Blanc Island are marks of the course and shall be left to port.
- (e) Boats shall pass through the Finish Line at Mackinac Island, confirm their time with the Race Committee. The time shall be entered on the Rounding Report.

#### 14.2 CHICAGO CHALLENGE:

- (a) Start at Chicago to Finish at Mackinac Island.
- (b) Boats shall leave Gray's Reef Passage Channel Lighted Buoy 7 (LL No. 17780) to starboard.
- (c) Boats shall leave New Shoal Lighted Bell Buoy 3 (LL No. 17745) to starboard. A full description of the Gray's Reef mark shall be provided at the Skippers' Meeting
- (d) Skippers shall record in the boat's log and on the Rounding Report, provided at the Skippers Meeting, the following information: the time of rounding, the identity and time of rounding of both the boats ahead and astern if known. Boats shall confirm the identity of the boats ahead and astern by **VHF Channel 72** if possible.
- (e) Boats shall pass under one of the three center spans of the Mackinac Bridge
- (f) Boats shall leave South Graham Shoal Buoy (LL No. 12635) to port

## 15. The Finish

15.1 Finish Line: The finish line shall be between a line, determined by the Race Director, on the window of the Mackinac Island Yacht Club and Round Island Lighted Buoy 3 (LL No. 12575) (45° 50 27.447N 084° 36 31.090W). A diagram of the finish line Mackinac Island shall be provided at the Skippers' Meeting.

15.2 Due to a common finish line, Skippers shall monitor VHF Channel 72 and to be aware of boats finishing from an opposing direction. A Skipper already finished shall **STAY CLEAR** of other boats that have not finished.

### 15.3 Finishing Procedure:

- (a) Skippers shall notify the Race Committee at Mackinac Island via VHF Channel 72 approximately **one hour** before the estimated time of finishing the Challenge. After crossing the finish line, the Skippers shall verify their finish with the Race Committee on VHF Channel 72. A boat may be deemed to have not finished without acknowledgement by the Race Committee.
- (b) Skippers shall complete a Finish Report which includes the boat's finishing time and the boat finishing ahead and/or behind, if known.
- (c) During hours of darkness, a boat shall illuminate its sail numbers for identification by the Race Committee.

15.4 **Check-in.** Within two (2) hours after finishing the course and Inspection, Skippers must report to the Race Committee headquarters at the Mackinac Island Yacht Club for check in. This includes signing the Skippers' Register, submitting the Radio Log, the Rounding Report and Finish Report. Any delay after the two-hour time limit will be subject to penalty.

## 16. TIME LIMIT

Any Skipper finishing after 1200 hours, Wednesday, June 26, 2024, shall submit all the required forms and petition for an approval of their finish by the GLSS Board of Directors.

## 17. INSPECTION

Upon the completion of the Challenge, each Skipper's boat may be subject to an inspection to verify compliance with the Required Equipment rule. A boat failing to comply with this Section 17 may be assessed a time penalty or be disqualified and not listed as an official finisher.

## 18. PROTESTS AND ALTERNATIVE PENALTIES

18.1 A boat protesting another boat shall do so in accordance with RRS 61 within four hours of the finish of the protesting boat. A protest by a boat that has abandoned the Challenge must be received or postmarked within 24 hours of arriving at a harbor of refuge.

18.2 Notice of intention to protest shall be given to the Race Committee when checking in. The Skipper of a protesting boat which finishes the Challenge must not leave Mackinac Island without notifying the Race Committee, failing which; the protest may be decided against such Skipper.

18.3 Protests should be submitted on a U.S. Sailing Protest Form, which shall be made available at the Race Committee Headquarters on Mackinac Island and is available at <https://www.ussailing.org/resource-library/us-sailing-hearing-request-form/>

18.4 Protests shall be heard as soon as practicable thereafter and the date and time shall be posted on the Official Notice Board at the Mackinac Island Race Headquarters.

18.5 Penalties imposed by the Protest Committee may include disqualification or in lieu thereof, the Protest Committee may penalize a boat by having its corrected time increased.

## 19. SCORING

19.1 Each boat that completes the Challenge shall be ranked by its corrected time in its division or class.

19.2 Corrected times shall be calculated on a time-on-distance basis using a course length of 230 nautical miles for the Port Huron start and 287 nautical miles for the Chicago start.

## 20. AWARDS

20.1 Skippers and their guests are invited to attend the Awards Luncheon to be held at the Mackinac Island Yacht Club at 1200 hours on Wednesday, June 26, 2024.

20.2 All Skippers who complete a Challenge within these Sailing Instructions and the Notice of Race shall be awarded a commemorative medallion for each Challenge completed acknowledging this achievement as set forth in the Notice of Race.

20.3 Flags shall be distributed as set forth in the Notice of Race.

## 21. RESPONSIBILITY TO REPORT

21.1 Any Skipper observing infractions of the Notice of Race and these Sailing Instructions is expected to report such infractions to the Race Committee.

21.2 At the conclusion of the Challenge, Skippers may be required to temporarily surrender their boat's log for inspection by the Race Committee.

21.3 A Skipper shall attempt to notify the Race Committee if it is apparent that he/she shall finish later than 1200 hours on Wednesday, June 26, 2024.

21.4 Should a Skipper withdraw from the Challenge; it is the responsibility of the Skipper to notify the Race Committee on Mackinac Island at the earliest opportunity. Phone numbers shall be provided at the Skippers' Meeting.

21.5 In the event that a Skipper temporarily anchors or lays to for more than 8 hours, the skipper must attempt to notify the Race Committee or another Skipper by VHF or telephone.

**21.6 Mandatory Radio Log and Call-in** Skippers shall attempt to make radio contact with other Skippers on VHF Channel 72 every 6 hours after the start of the challenge. Skippers missing a call-in shall be subject to penalty. Channel 72 is to be monitored for 30 minutes at the appropriate times. Radio contact with other Skippers is to be logged noting time, position, and other pertinent information. A form for this Radio Log shall be provided at the Skippers' meeting. Skippers shall turn in the log to the Race Committee on Mackinac Island within two (2) hours of finishing the Challenge and clearing docking. Skippers shall maintain a boat's log noting position and conditions with entries recommended at least every 3 hours.

## 22. SPECIAL AIDS

22.1 The use of electronic navigational aids (i.e., GPS, Radar, and LORAN) is permissible.

22.2 The use of powered winches and powered winch drivers is permitted.



## 23. OUTSIDE ASSISTANCE

23.1 The RRS 41 shall apply and include the following:

23.2 A boat may anchor or tie to a dock.

23.3 During the Challenge including when a boat is anchored or moored, the following is specifically PROHIBITED:

- (a) Any prearranged transmissions for the advantage of the individual Skippers.
- (b) Communications with non-participants for the purpose of a position fix.
- (c) Outside physical assistance, an example of which is to free a grounded boat.**
- (d) Materials, equipment or supplies of any sort shall not be taken aboard the boat.
- (e) No materials shall leave the boat except that accidentally fall overboard or are supplied to others in distress.

23.4 Should a Skipper feel that it is necessary to **temporarily** pull out of the Challenge, he/she shall continue to be as self-sufficient as they if still on the course and remain on the boat except to attend to docking. The skipper is **REQUIRED** to notify the race committee of his/her withdrawal and intent to re-enter the Challenge. The skipper will notify the race committee of his/her re-entry into the challenge PRIOR TO RE-ENTRY. The skipper will not be scored until an appeal is approved by the GLSS Board of Directors. The appeal should contain, at a minimum, the following: a written detailed description of the cause of the temporary withdrawal, corrective action(s) taken, and a time line. The Skipper shall make every effort to minimize motor use, and to minimize the time spent in a harbor. These details will be taken into consideration when the Board reviews the finish.

## 24. PROPULSION

24.1 RRS 42 shall apply as except the following:

- (a) A boat that has not yet started may use engine propulsion to proceed to no closer 200 yards from the starting area after the preparatory signal for its class.
- (b) Engine propulsion may be used to avoid a collision with commercial traffic providing that such usage does not advance the boat's position from its original position just prior to the hazardous incident.
- (c) A boat may temporarily pull out of the Challenge. In order to safely enter or leave a harbor, motoring from a minimum safe distance for the conditions is acceptable. Any motoring that would be necessary must not improve the Skipper's position.
- (d) An engine may be used for generating electrical power provided that such use does not advance the boat's position.
- (e) All uses of the engine for propulsion must be logged and reported to the Race Committee when registering after the Challenge.
- (f) The use of engine power to free a grounded vessel shall be permitted if its use does not advance the vessel's position.
- (g) Engine propulsion may be used to clear seaweed or fish netting from the keel, rudder, or propeller if the use does not improve the boat's position.

## 25. SEAMANSHIP

25.1 The Great Lakes Singlehanded Society stresses that the spirit of the Challenge is to complete a safe and seamanlike passage. The fact that an event is being held does not condone unseamanlike conduct in fog, traffic, or conditions of fatigue.

25.2 The Race Committee stresses Rule 5 of the Inland Rules of the Road: **"EVERY VESSEL SHALL, AT ALL TIMES, MAINTAIN A PROPER LOOKOUT BY SIGHT AS WELL AS BY ALL AVAILABLE MEANS APPROPRIATE IN THE PREVAILING CIRCUMSTANCES AND CONDITIONS AS TO MAKE FULL APPRAISAL OF THE SITUATION AND THE RISK OF COLLISION."**

## **26. SPOT TRACKING**

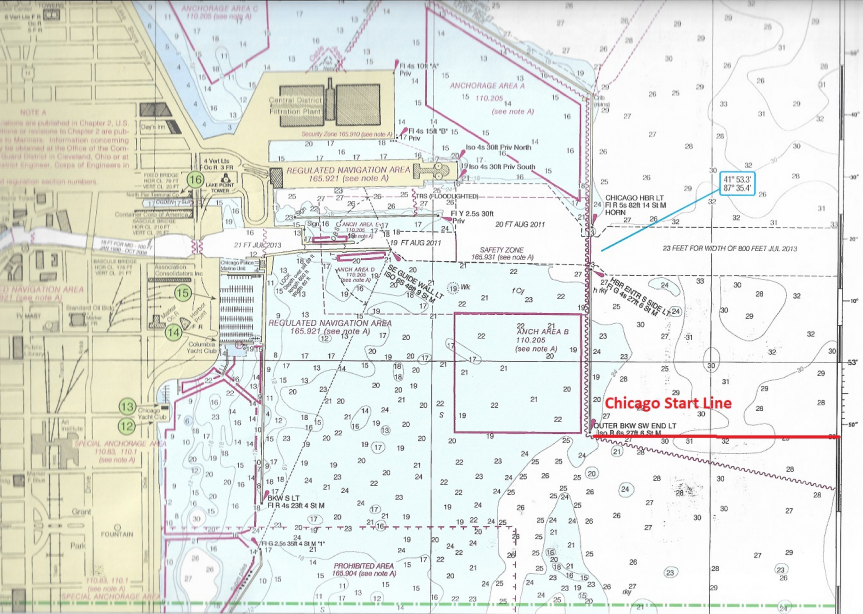
A SPOT or other Messaging and Tracking device using satellite communications capable of sending a manual "OK" signal and set to a ping rate of no less than every 30 minutes is phased in as of 2024  
For New Participants and Existing GLSS members this is **MANDATORY** as of 2024.

These devices must be registered with proper contact information to be useful and a contact shall be provided for all events.

.

## **27. AIS**

AIS transponder identifying the yacht's position, course and speed to other craft is **MANDATORY** for 2024, except for solo sailors who have already completed at least 20 GLSS Solo Challenges.



NOTE A  
 Regulations are published in Chapter 2, U.S. Coast and Geodetic Survey, or reference to Chapter 2 are published in the same manner. Information concerning regulations is obtained at the Office of the Commandant in Cleveland, Ohio or at the District Engineer, Corps of Engineers in Chicago.

REGULATION SECTION NUMBERS

REGULATED NAVIGATION AREA 165.921 (see note A)

SPECIAL ANCHORAGE AREA 110.83, 110.1 (see note A)

SPECIAL ANCHORAGE AREA 110.83, 110.1 (see note A)

Central District Filtration Plant

4 VertiLis Floor 3 FR

REGULATED NAVIGATION AREA 165.921 (see note A)

REGULATED NAVIGATION AREA 165.921 (see note A)

ANCHORAGE AREA A 170.205 (see note A)

ANCHORAGE AREA B 110.205 (see note A)

Chicago Start Line

PROHIBITED AREA 165.904 (see note A)

41' 53.3"  
 87' 35.4"

23 FEET FOR WIDTH OF 800 FEET JUL 2013

SAFETY ZONE 165.931 (see note A)

OUTER BKW SW END LT

CHICAGO HBR LT

BOW S LT

FL R 4s 23R 4 St M

FL G 2.5s 36R 4 St M

ANCH AREA D 170.205 (see note A)

SE GUIDE WALL LT

FL G 2s 27R 2 St M

FL G 2s 27R 2 St M

FL G 2s 27R 2 St M

FL G 2s 27R 2 St M

FL G 2s 27R 2 St M

FL G 2s 27R 2 St M

FL G 2s 27R 2 St M

FL G 2s 27R 2 St M

FL G 2s 27R 2 St M

FL G 2s 27R 2 St M

FL G 2s 27R 2 St M

FL G 2s 27R 2 St M

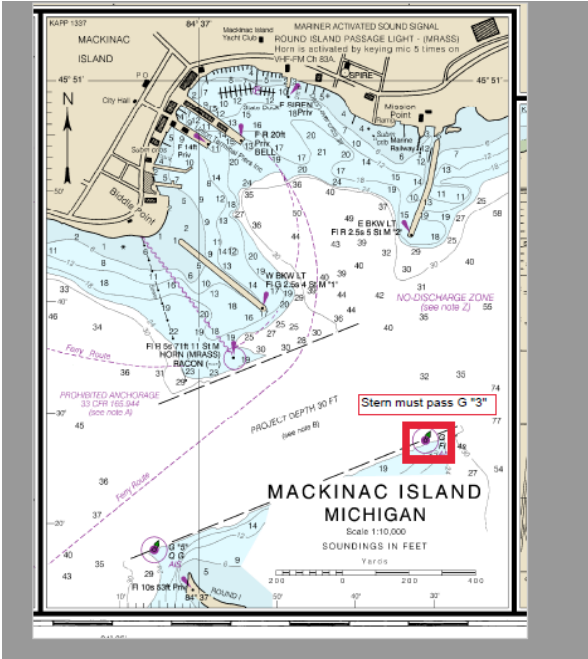
FL G 2s 27R 2 St M

FL G 2s 27R 2 St M

FL G 2s 27R 2 St M

FL G 2s 27R 2 St M

FL G 2s 27R 2 St M



# Solo Mac Finish Line



DEPARTMENT OF HOMELAND SECURITY  
U.S. COAST GUARD

**PERMIT FOR MARINE EVENT**

Date Approved  
03/06/2024

<b>Name of Event</b> Chicago-Mackinac Island Solo Challenge	<b>Location</b> Chicago to Mackinac Island	<b>Date of Event</b> 06/22/2024
<b>Sponsoring Organization</b> Great Lakes Singlehanded Society	<b>Name of Representative (Last, First, MI)</b> Reichling, Elisabeth	<b>Title</b> Race Director

**Your application for the following event is approved.** Special services to be rendered by the Coast Guard are listed. You are reminded that your organization is primarily responsible for safety in the regatta area and that this permit does not relieve you of such responsibility. Participants shall be adequately briefed and their boats equipped as required by law. A permit may also be required by a state, county or municipal agency. This authorization grants no exemption from state or local ordinances. In the event of any change in the information furnished in your application you will notify this office.

- |  |   |
|--|---|
| <p><input checked="" type="checkbox"/> There <b>will not be</b> a Special Local Regulation issued. No restriction is placed on the use of any navigable waters by other parties. Your event shall not obstruct any channel or normal shipping lane, or interfere with any aid to navigation. The Committeeman in Charge shall control participants to prevent conditions hazardous to other craft in the area.</p> <p><input type="checkbox"/> There <b>will be</b> a Special Local Regulation issued establishing a restricted area and other controls. You will be provided a copy for guidance. The Committeeman in Charge shall control participants to prevent conditions hazardous to other craft in the area.</p> | <p><input checked="" type="checkbox"/> There <b>will be</b> a Local Notice to Mariners issued to inform maritime interests and solicit their cooperation.</p> <p><input checked="" type="checkbox"/> There <b>will not be</b> a Regatta Patrol assigned by the Coast Guard.</p> <p><input type="checkbox"/> There <b>will be</b> a Regatta Patrol assigned by the Coast Guard. The attached instruction for Patrol Commanders outlines their responsibility and authority. You should work out specific details with the Patrol Commander.</p> <p><input checked="" type="checkbox"/> <b>Additional safety equipment</b> is stipulated below.</p> |
|--|---|

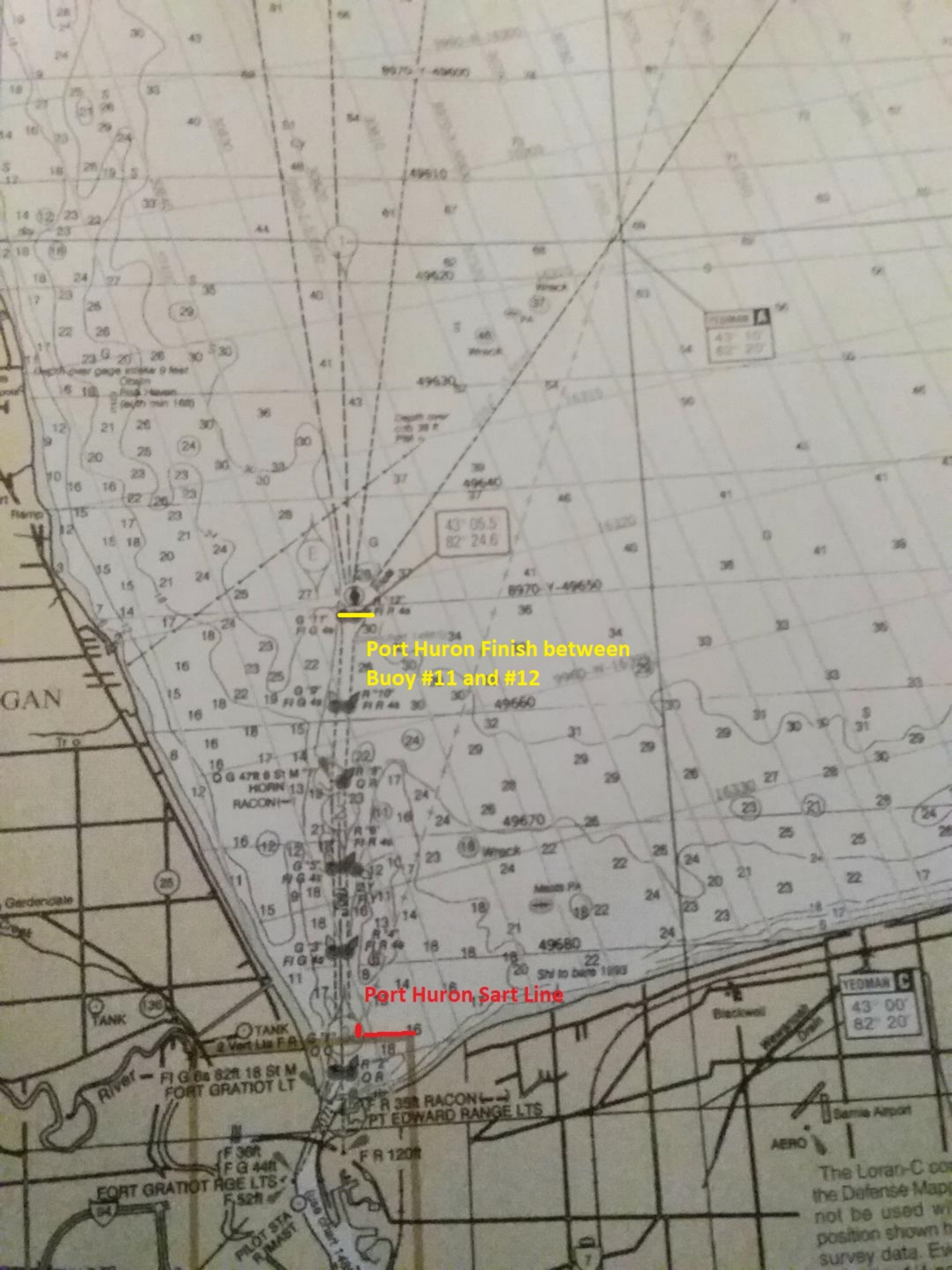
The sponsor anticipates approximately 30 participating vessels of 26' to 50' feet in length. Sailing vessels will monitor both CH 16 and 72. Reference application for event specifics. Race Director's cell phone is (269) 330-8868 and email nchawk3@yahoo.com. The sponsoring organization must comply with all existing federal, state, local laws and other requirements that may impact their ability to hold their event as proposed. A reminder of two Inland Rules of the Road: 1. Compliance with Rule 9: in all narrow channels, a vessel of less than 20 meters in length or a sailing vessel shall not impede the passage of a vessel that can safely navigate only within a narrow channel or fairway. 2. In the event of restricted visibility, race participants will navigate in accordance with Rule 35 of the Inland Navigation Rules as well as all other pertinent 'Rules of the Road' applicable to the current conditions. As the event sponsor, you remain responsible for the overall safety of this event. This may include providing instructions to the participants, verifying crew qualifications, conducting equipment inspections, providing rescue and first aid facilities, and controlling obstructions or menaces to navigation as applicable. You are also responsible for obtaining any additional permits from other national federal, state, or local authorities that may be required. The Ninth Coast Guard District strongly recommends that all participants wear either an inherently buoyant or inflatable Personal Flotation Device (PFD) with an affixed, registered Personal Locator Beacon (PLB) whenever underway for the duration of this event. Enclosed is a copy of the Ninth Coast Guard District's "Cardinal Points" for Regattas. This document provides information concerning how to notify the Coast Guard should a distress situation develop during your event.

*Jonathan Tripi*

Jonathan R. Tripi  
LTJG, U.S. Coast Guard  
Ninth Coast Guard District

Reset






Port Huron Finish between Buoy #11 and #12

Port Huron Sart Line

The Loran-C on the Defense Map not be used w position shown b survey data. Ev





2.25 sm to  
Goderich harbor  
entrance

45° to entrance

43°43.3N 81°46.2W

2.3 sm 90° to shoreline

© 2018 Google  
Image NOAA

Image © 2019 DigitalGlobe

DEPARTMENT OF HOMELAND SECURITY  
U.S. COAST GUARD

PERMIT FOR MARINE EVENT

Date Approved

03/06/2024

Name of Event	Location	Date of Event
Port Huron-Mackinac Island Solo Challenge	Port Huron to Mackinac Island	06/22/2024
Sponsoring Organization	Name of Representative (Last, First, MI)	Title
Great Lakes Singlehanded Society	Reichling, Elisabeth	Race Director

Your application for the following event is approved. Special services to be rendered by the Coast Guard are listed. You are reminded that your organization is primarily responsible for safety in the regatta area and that this permit does not relieve you of such responsibility. Participants shall be adequately briefed and their boats equipped as required by law. A permit may also be required by a state, county or municipal agency. This authorization grants no exemption from state or local ordinances. In the event of any change in the information furnished in your application you will notify this office.

- |  |   |
|--|---|
| <p><input checked="" type="checkbox"/> There will not be a Special Local Regulation issued. No restriction is placed on the use of any navigable waters by other parties. Your event shall not obstruct any channel or normal shipping lane, or interfere with any aid to navigation. The Committeeman in Charge shall control participants to prevent conditions hazardous to other craft in the area.</p> <p><input type="checkbox"/> There will be a Special Local Regulation issued establishing a restricted area and other controls. You will be provided a copy for guidance. The Committeeman in Charge shall control participants to prevent conditions hazardous to other craft in the area.</p> | <p><input checked="" type="checkbox"/> There will be a Local Notice to Mariners issued to inform maritime interests and solicit their cooperation.</p> <p><input checked="" type="checkbox"/> There will not be a Regatta Patrol assigned by the Coast Guard.</p> <p><input type="checkbox"/> There will be a Regatta Patrol assigned by the Coast Guard. The attached instruction for Patrol Commanders outlines their responsibility and authority. You should work out specific details with the Patrol Commander.</p> <p><input checked="" type="checkbox"/> Additional safety equipment is stipulated below.</p> |
|--|---|

The sponsor anticipates approximately 30 participating vessels of 26' to 50' feet in length. Sailing vessels will monitor both CH 16 and 72. Reference application for event specifics. Race Director's cell phone is (269) 930-8868 and email nthatk9@yahoo.com. The sponsoring organization must comply with all existing federal, state, local laws and other requirements that may impact their ability to hold their event as proposed. A reminder of two Inland Rules of the Road: 1. Compliance with Rule 9: in all narrow channels, a vessel of less than 20 meters in length or a sailing vessel shall not impede the passage of a vessel that can safely navigate only within a narrow channel or fairway. 2. In the event of restricted visibility, race participants will navigate in accordance with Rule 35 of the Inland Navigation Rules as well as all other pertinent 'Rules of the Road' applicable to the current conditions. As the event sponsor, you remain responsible for the overall safety of this event. This may include providing instructions to the participants, verifying crew qualifications, conducting equipment inspections, providing rescue and first aid facilities, and controlling obstructions or menaces to navigation as applicable. You are also responsible for obtaining any additional permits from other national federal, state, or local authorities that may be required. The Ninth Coast Guard District strongly recommends that all participants wear either an inherently buoyant or inflatable Personal Flotation Device (PFD) with an affixed, registered Personal Locator Beacon (ELB) whenever underway for the duration of this event. Enclosed is a copy of the Ninth Coast Guard District's "Cardinal Points" for Regattas. This document provides information concerning how to notify the Coast Guard should a distress situation develop during your event.

*Jonathan Tripi*

Jonathan R. Tripi  
LTJG, U.S. Coast Guard  
Ninth Coast Guard District

Reset





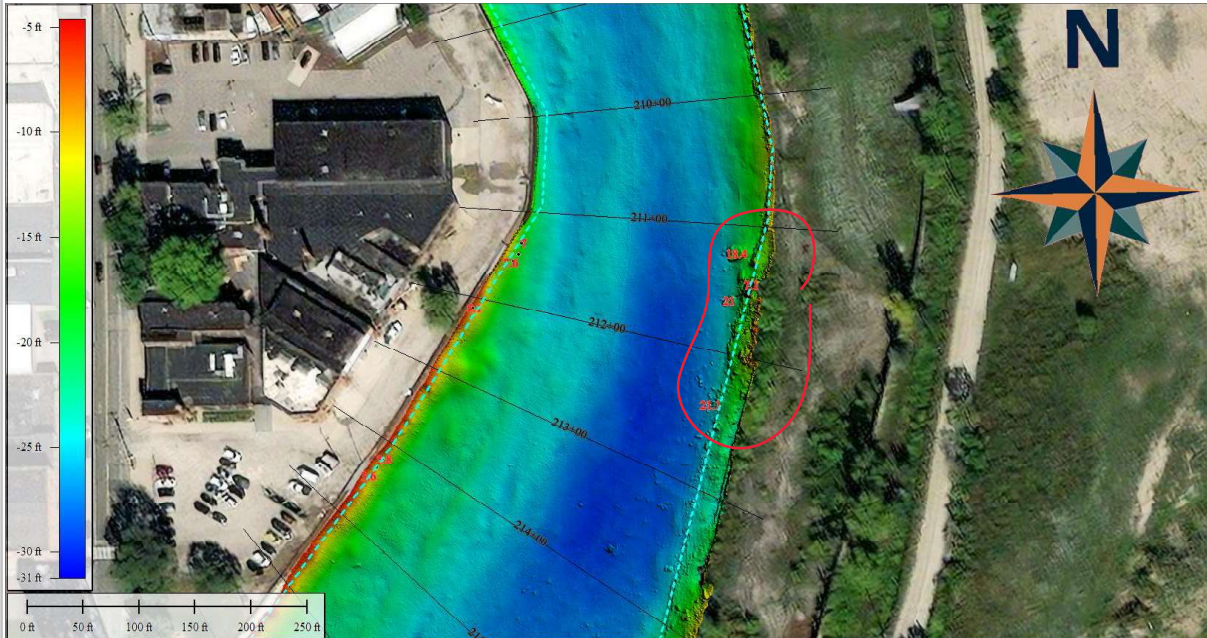
# CHANNEL OBSTRUCTION REPORT

## U.S. Army Corps of Engineers – Buffalo District

PROJECT NAME: Cuyahoga River  
 DATE OBSERVED: 12/07/2023  
 CREW: D. Banning, D. Bognar

OBJECT: Multiple unknown  
 LATITUDE: 41° 29' 23.1785" N  
 LONGITUDE: 81° 41' 54.1661" W

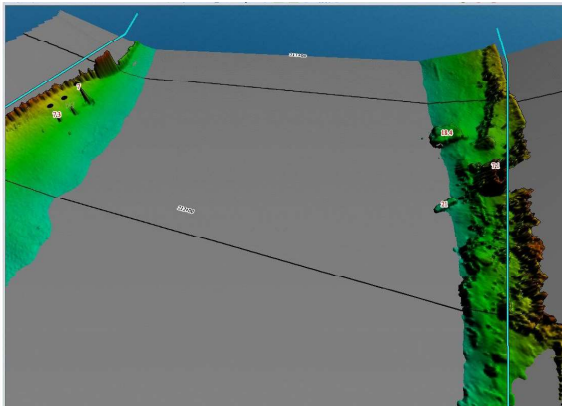
### SURVEY DATA



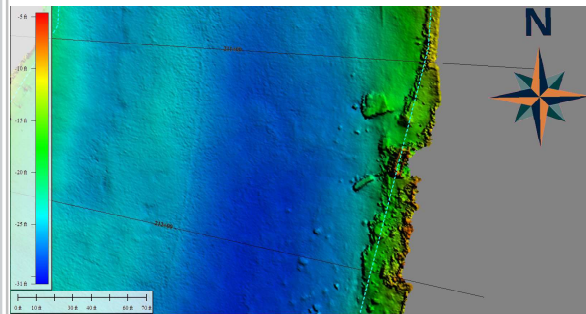
Multiple objects along easterly edge of Federal Channel between Sta. 211+00 & 213+00. Object Depths shown in red. Federal Channel shown in cyan.

View: NE down channel line

Hypack Channel View



3D view of channel bottom showing only areas that are shoaler than project depth of 23ft.



Close up view of area.

# Waterway Analysis and Management System Survey

Name of Waterway: \_\_\_\_\_

## User Information

\_\_\_ Commercial User

\_\_\_ Recreational User

Number of years in the maritime industry or number of years using this waterway: \_\_\_\_\_

Number of transits in the waterway per year: \_\_\_\_\_

Number of night transits of waterway: \_\_\_\_\_

Seasonal Dates: Start: \_\_\_\_\_ End: \_\_\_\_\_

Name of Vessel: \_\_\_\_\_

Vessel Description: \_\_\_\_\_

Length: \_\_\_\_\_ Beam: \_\_\_\_\_ Draft: \_\_\_\_\_ Gross Tons: \_\_\_\_\_

Net Tons: \_\_\_\_\_ Bridge Height of Eye: \_\_\_\_\_

Cargo Carried: \_\_\_\_\_

Navigational tools used: (ECDIS/ECPINS, GPS, DGPS, VISUAL, RADAR) \_\_\_\_\_  
\_\_\_\_\_  
\_\_\_\_\_

What area do you believe is the most dangerous or difficult to navigate: \_\_\_\_\_  
\_\_\_\_\_  
\_\_\_\_\_

Are the floating aids to navigation (lighted and unlighted buoys) adequate for this waterway: \_\_\_\_\_  
\_\_\_\_\_

---

---

---

Are the fixed aids to navigation (lights, ranges, lighthouses, daybeacons) adequate for this waterway: \_\_\_\_\_

---

---

---

Are the year round and lighted ice buoys adequate: \_\_\_\_\_

---

---

---

Are there buoys that you feel should be changed to fixed aids to navigation?

---

---

---

---

---

---

Are there any buoys that could be eliminated from this waterway: \_\_\_\_\_

---

---

---

Are there any buoys with sound signals that the bell or gong could be removed:

---

---

---

Are there any areas that require additional aids to navigation in this waterway:

---

---

---

Do the nautical charts, Coast Pilot, and Light List meet your needs for this waterway: \_\_\_\_\_

---

---

---

Are there private Aids to Navigation that you find misleading or interfere with the current system in the waterway:

---

---

---

Any addition comments on this waterway: \_\_\_\_\_

---

---

---

---

Thank you for taking time to comment on this waterway. Your input as a mariner very valuable to the U. S. Coast Guard in evaluating waterways to make them safe and as easily navigable as possible. Please feel free to contact [D09-DG-District-D9-ATON-Support@uscg.mil](mailto:D09-DG-District-D9-ATON-Support@uscg.mil) with any other questions or concerns about any aids to navigation in the Great Lakes. The survey can be mailed to:

Commander (dpw-2)  
Ninth Coast Guard District  
1240 East Ninth Street  
Cleveland, Ohio 44199

---