



June 7, 2024

PUBLIC NOTICE D8 DWB-920

All interested parties are herein notified that the Commander, Eighth Coast Guard District, has received application materials dated April 28, 2024 from the Arkansas Department of Transportation for approval of location and plans for the construction of a bridge over a navigable waterway of the United States.

**WATERWAY AND LOCATION:** Arkansas River, Mile 291.6, on Interstate 49 near Barling, Sebastian County, AR.

**CHARACTER OF WORK:** Construct a new fixed steel girder highway bridge that will establish an interstate corridor between Alma and Barling, Arkansas.

**MINIMUM NAVIGATIONAL CLEARANCES:**

Proposed

Horizontal: Main channel span is 400.0 feet measured normal to axis of the channel.

Vertical: Main channel span low steel elevation is 442.82 feet. Normal pool elevation is 372.82 feet for a total of 70.0 feet vertical clearance.

**Datum:** NAVD88

Conversion NGVD29 = NAVD88 -.32 feet

**ENVIRONMENTAL CONSIDERATIONS:**

The Federal Highway Administration (FHWA) is the lead Federal Agency for satisfying the requirements of the National Environmental Policy Act (NEPA). The FHWA is acting on behalf of the U.S. Coast Guard for all environmental control laws. An Environmental Impact Statement/Record of Decision (EIS/ROD) was issued on August 7, 1997, pursuant to NEPA, as amended. A Reevaluation of the EIS has been completed and is at FHWA for approval. The U.S. Coast Guard has tentatively determined that the proposed action will not have a significant impact for the purposes of NEPA and plans to issue a Record of Decision for the project. Documents are available for review at the above address, Monday through Friday, 8:00 a.m. to 4:00 p.m.

A water quality certification in accordance with Section 401 of the Clean Water Act, as amended, for this project is anticipated from the Arkansas Department of Environmental Quality and the U.S. Army Corps of Engineers (USACE) Little Rock District Nationwide Permit 14. The bridge is located in the floodplain. The 100-year flood elevation is 403.4 feet, while elevation of the low member of the navigation span is 442.8. Elevations are referenced to NAVD88 datum. The total impacted acres of wetland is 2.87 acres.

The decision as to whether to grant approval of the location and plans for the proposed action rests primarily upon the effect it has on navigation.

**SOLICITATION OF COMMENTS:**

Mariners are requested to comment on the proposed navigation clearances, placement of a bridge protective system and other navigational safety issues, including need for clearance gauges and extent of nighttime navigation to determine the need for bridge lighting. Interested parties are requested to express their views, in writing, on the proposed bridge project including its possible impacts to navigation.

We will forward comments of an environmental nature such as those regarding wildlife refuges, public parks, historic sites, wetlands, floodplain issues, air, water quality, environmental justice, etc. to the FHWA. Comments will be received for the record at the address noted in the header or via email [eric.washburn@uscg.mil](mailto:eric.washburn@uscg.mil) through **July 7, 2024**.

Map of location and plans attached.



ERIC A. WASHBURN  
Bridge Supervisor, Western Rivers  
By direction of the District Commander

NOTE: The mailing list for this Public Notice is arranged by watershed. Due to the size of this list, selective mailing is not practical. Please discard notices that are not of interest to you. If you have no need for any of these notices, please advise us so that your name can be removed from the mailing list.

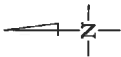
POSTMASTER: Official business. Please post.

LOCATION OF PROJECT

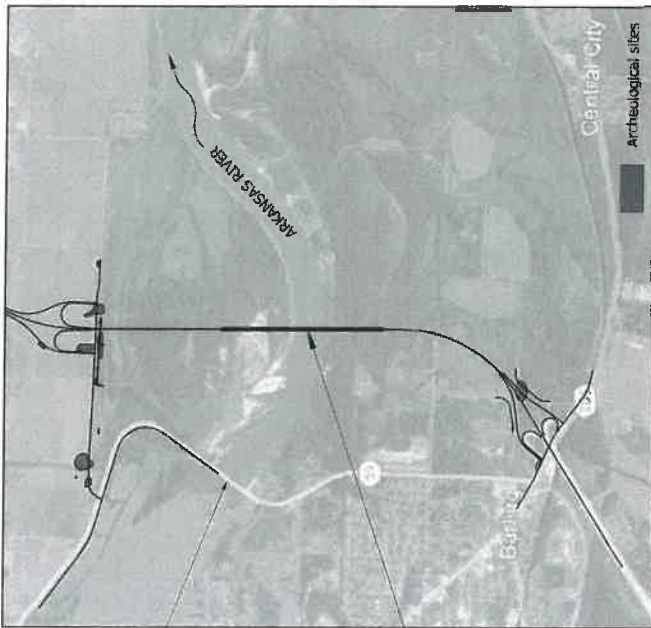


STATE OF ARKANSAS

JAMES W. TRIMBLE LOCK  
AND DAM NO. 13  
AND U.S. HIGHWAY 59



PROPOSED BRIDGE



# LOCATION MAP



Notes:  
Elevations shown on these plans are based on NAVD 88 vertical datum.

Datum Difference: NAVD88 - 0.32' = NGVD29

Conceptual plans utilized to obtain Coast Guard bridge permit.

THE DESIGN OF THE I-49 BRIDGE OVER THE ARKANSAS RIVER MEETS AASHTO STANDARDS AND HAS BEEN DESIGNED TO WITHSTAND VESSEL COLLISION. THE TYPICAL DESIGN VESSEL IS A 15-BARGE TOW WITH STANDARD HOPPER INLAND RIVER BARGES AND A TUG.

CONSULTANT:



PROPOSED BRIDGE:  
INTERSTATE 49 OVER ARKANSAS RIVER, MILE 291.6  
NEAR BARLING, ARKANSAS (SEBASTIAN COUNTY)  
APPLICATION BY:  
ARKANSAS DEPARTMENT OF TRANSPORTATION

SHEET 1 OF 4  
MAY 2024

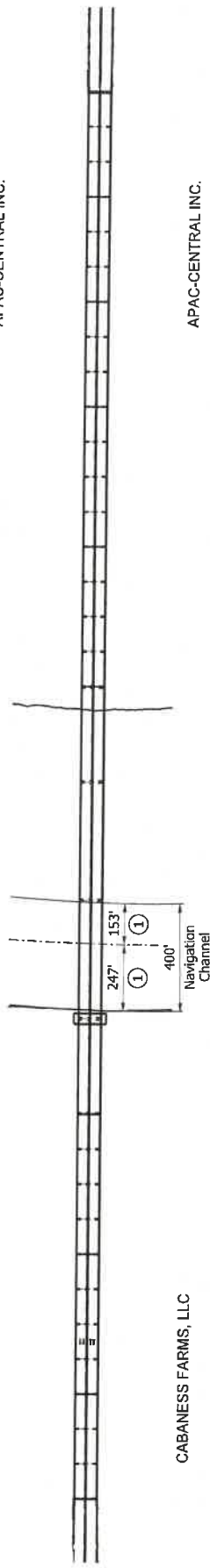


BRIDGE ENGINEER



CABANESS FARMS, LLC

APAC-CENTRAL INC.



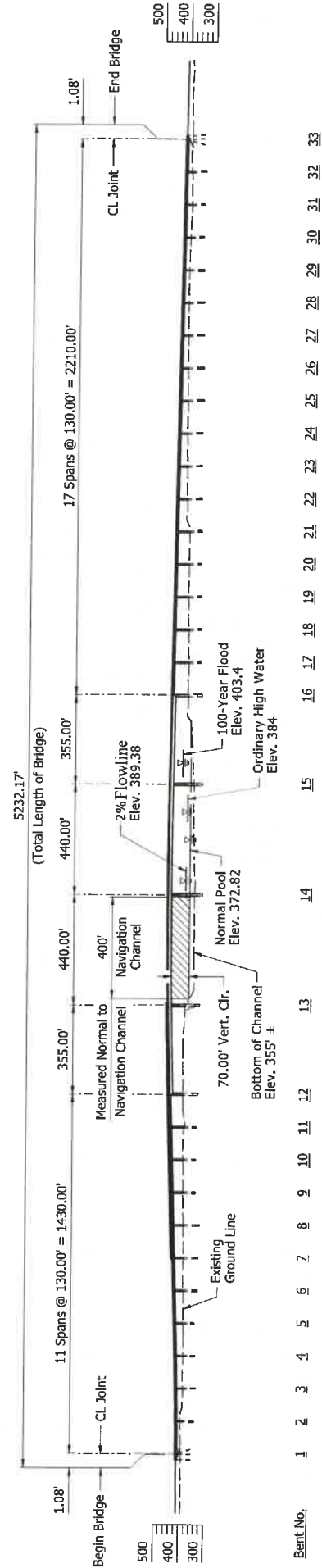
CABANESS FARMS, LLC

APAC-CENTRAL INC.

Navigation Channel Axis

① Measured Normal to Navigation Channel

**PLAN**



**ELEVATION**

Notes:  
 Elevations shown on these plans are based on NAVD 88 vertical datum.  
 Datum Difference: NAVD88 - 0.32' = NGVD29  
 For details of navigation span, see Sheet 3 of 4.

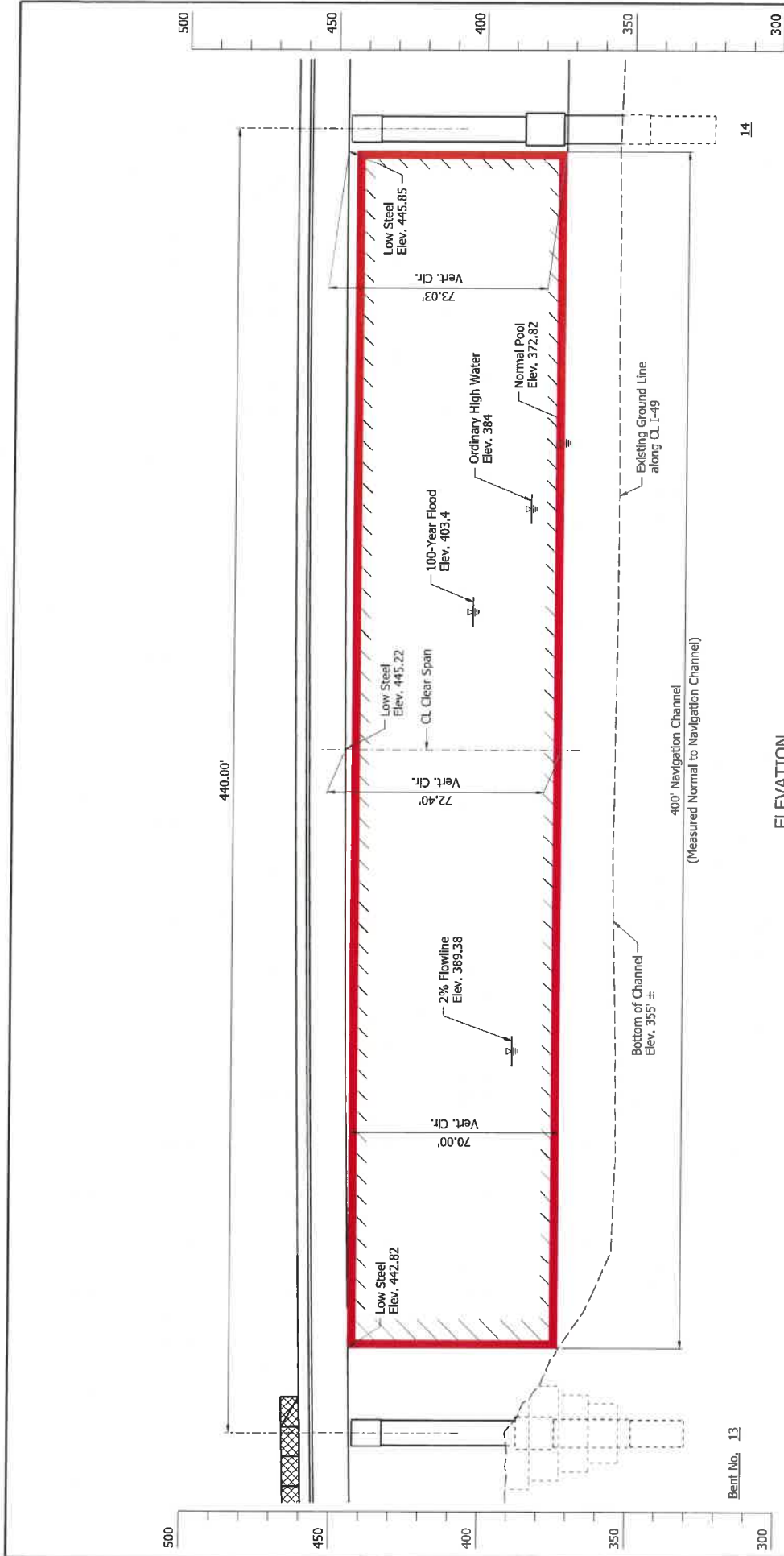


BRIDGE ENGINEER

CONSULTANT:



PROPOSED BRIDGE:  
 INTERSTATE 49 OVER ARKANSAS RIVER, MILE 291.6  
 NEAR BARLING, ARKANSAS (SEBASTIAN COUNTY)  
 APPLICATION BY:  
 ARKANSAS DEPARTMENT OF TRANSPORTATION  
 SHEET 2 OF 4  
 MAY 2024



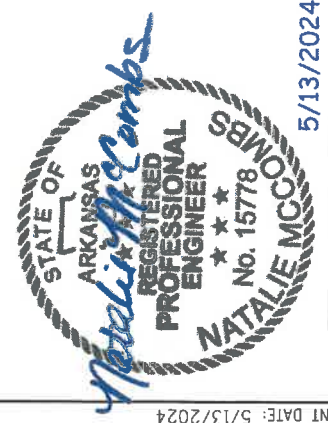
Bent No. 13

**ELEVATION**

Notes:  
Elevations shown on these plans are based on NAVD 88 vertical datum.

Datum Difference: NAVD88 - 0.32' = NGVD29

THE DESIGN OF THE I-49 BRIDGE OVER THE ARKANSAS RIVER MEETS AASHTO STANDARDS AND HAS BEEN DESIGNED TO WITHSTAND VESSEL COLLISION. THE TYPICAL DESIGN VESSEL IS A 15-BARGE TOW WITH STANDARD HOPPER INLAND RIVER BARGES AND A TUG.



BRIDGE ENGINEER

CONSULTANT:



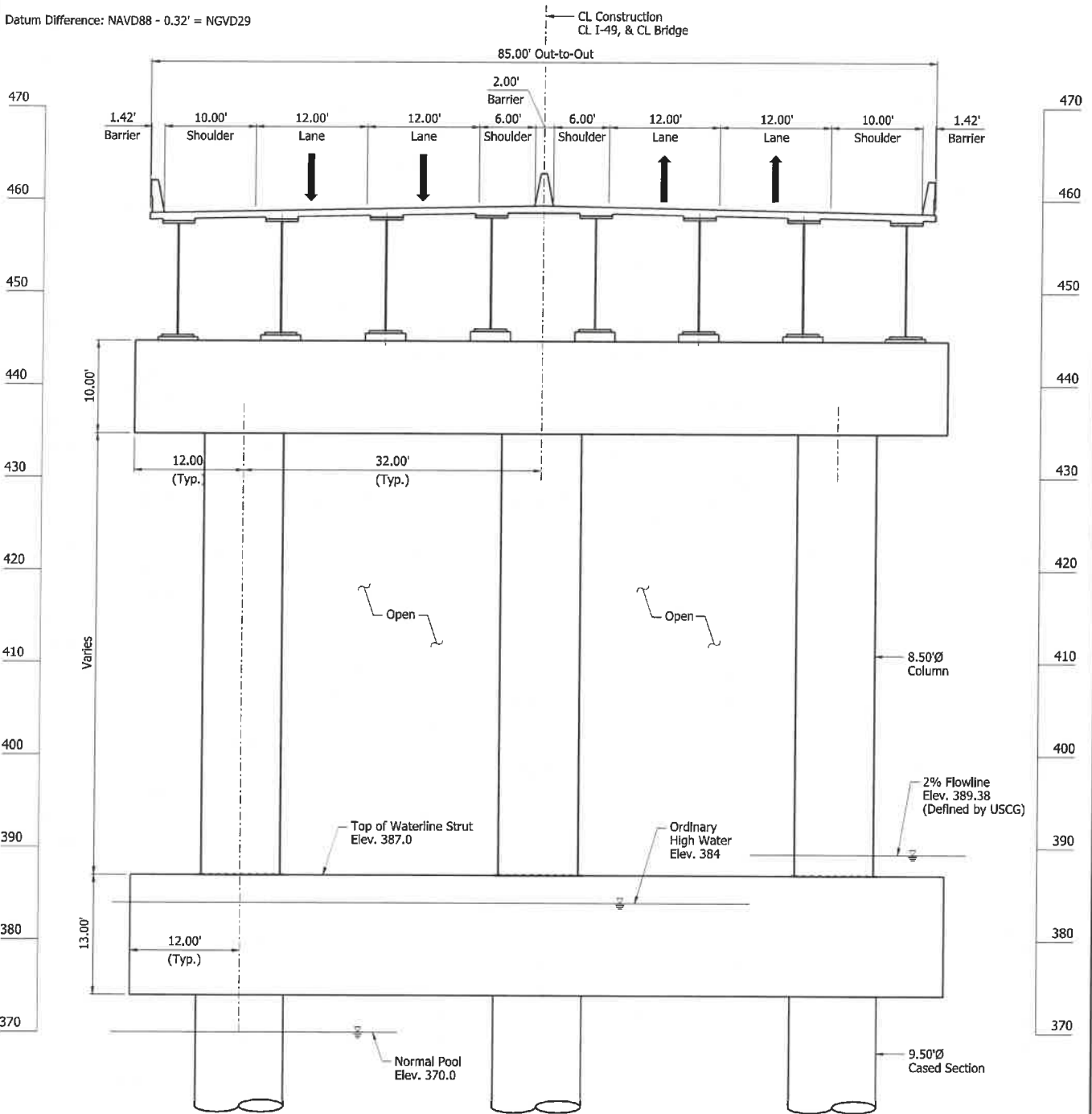
**PROPOSED BRIDGE  
INTERSTATE 49 OVER ARKANSAS RIVER, MILE 291.6  
NEAR BURLING, ARKANSAS (SEBASTIAN COUNTY)  
APPLICATION BY  
ARKANSAS DEPARTMENT OF TRANSPORTATION**

SHEET 3 OF 4  
MAY 2024

THE DESIGN OF THE I-49 BRIDGE OVER THE ARKANSAS RIVER MEETS AASHTO STANDARDS AND HAS BEEN DESIGNED TO WITHSTAND VESSEL COLLISION. THE TYPICAL DESIGN VESSEL IS A 15-BARGE TOW WITH STANDARD HOPPER INLAND RIVER BARGES AND A TUG.

Notes:  
Elevations shown on these plans are based on NAVD 88 vertical datum.

Datum Difference: NAVD88 - 0.32' = NGVD29



TYPICAL SECTION VIEW  
(Looking Upstation)



STATE OF  
ARKANSAS  
*Natalie Mccombs*  
REGISTERED  
PROFESSIONAL  
ENGINEER  
\*\*\*  
No. 15778  
NATALIE MCCOMBS  
5/13/2024  
BRIDGE ENGINEER

CONSULTANT:  
**HNTB**

PROPOSED BRIDGE:  
INTERSTATE 49 OVER ARKANSAS RIVER, MILE 291.6  
NEAR BARLING, ARKANSAS (SEBASTIAN COUNTY)  
APPLICATION BY:  
ARKANSAS DEPARTMENT OF TRANSPORTATION

SHEET 4 OF 4  
MAY 2024

PRINT DATE: 4/2/2024