

U.S. Department of  
Homeland Security

United States  
Coast Guard



Commander  
United States Coast Guard  
Southeast District

909 SE 1<sup>st</sup> Ave  
Miami, FL 33131  
Staff Symbol: dpb  
Email:  
[Lisia.j.kowalczyk2@uscg.mil](mailto:Lisia.j.kowalczyk2@uscg.mil)

12 September 2025

## PUBLIC NOTICE 5-25

All interested parties are herein notified that the Commander, Southeast Coast Guard District, has received application materials dated 6 June 2025 from Manatee County, Florida for approval of location and plans for the construction of a bridge over a navigable waterway of the United States.

**BRIDGE, WATERWAY AND LOCATION:** Fort Hamer across Manatee River, mile 15, on Fort Hamer Road, near Parrish, Manatee County, Florida.

**CHARACTER OF WORK:** There is currently one, 2-lane, bidirectional fixed span bridge across the Manatee River at this location. The proposed bridge consists of a new, two-lane fixed span structure crossing the Manatee River and connecting the existing two-lane Upper Manatee River Road with the existing two-lane Fort Hamer Road. The existing bridge will be switched to a two-lane, single directional, north bound bridge, and the proposed bridge will be a two-lane, single directional south bound bridge. The proposed bridge will also have two shoulders and a pedestrian walkway. The vertical clearance of the proposed bridge at the channel centerline is 26 feet and the horizontal clearance is 75 feet, which will match the vertical and horizontal clearances of the existing bridge. The length of the existing bridge is 2,308 feet and the length of the proposed bridge is 2,318 feet. The width of the existing bridge is 49.04 feet, and the width of the proposed bridge is 52.0 feet. The existing and the proposed bridge both cross two channels of the Manatee River which is bifurcated with a marsh grass hammock. A temporary work trestle will be used to construct the new bridge and will remain in place through completion of the new bridge deck construction. The trestle bridge will not extend across the main channel of the river, in order to maintain the navigation through the channel during most times. The channel may be closed for short periods when the contractor needs to place the center spans or transport the crane across the channel. In these cases, the contractor would coordinate these temporary closings of the waterway with the Coast Guard.

**MINIMUM NAVIGATIONAL CLEARANCES:** The proposed new bridge will have clearances as described in the table below. These clearances match current clearances over this section of the waterway at or near this mile. Vertical clearance is from low member elevation to mean high water. Or, if not mean high water, the appropriate high-water mark (e.g., OHW, 2% flow, normal high water, etc.).

	Existing	Proposed
Vertical	26	26
Horizontal	75	75

**Datum:** NAVD88

**ENVIRONMENTAL CONSIDERATIONS:** The United States Army Corps of Engineers (USACE) is the lead Federal agency for satisfying the requirements of the National Environmental Policy Act (NEPA). The USACE is acting on behalf of the U.S. Coast Guard for all environmental control laws. An Environmental Assessment and a Finding of No Significant Impact (FONSI) will be issued by the USACE, pursuant to NEPA, as amended. The U.S. Coast Guard has tentatively determined that the proposed action will not have a significant impact for the purposes of NEPA. Documents will be available for review online through the USACE website.

A water quality certification in accordance with Section 401 of the Clean Water Act, as amended, for this project was applied for from the Southwest Florida Water Management District (SWFWMD) in June 2025. This project will directly impact 0.31 acres of wetland with 2.21 acres of indirect impact through shading and secondary impacts. A total of 0.58 acres of mitigation credits are being applied for to offset the impacts.

The bridge is located in the floodplain. The 100-year flood elevation is 12 feet. The elevation of the low member of the navigation span is 26 feet. Elevations are referenced to NAVD88 datum. Approximately 1,056 cubic yards of fill material will be placed below mean high water level for the construction of the bridge and approaches.

#### **SOLICITATION OF COMMENTS:**

Mariners are requested to comment on the proposed navigation clearances, placement of a bridge protective system and other navigational safety issues, including need for clearance gauges and extent of nighttime navigation to determine the need for bridge lighting. Interested parties are requested to express their views, in writing, on the proposed bridge project including its possible impacts to navigation.

We will forward comments of an environmental nature such as those regarding wildlife refuges, public parks, historic sites, wetlands, floodplain issues, air, water quality, etc. to the agent for the project and to the USACE. Comments will be received for the record at the address noted in the header or via email (Lisia.j.kowalczyk2@uscg.mil) through **13 October 2025**

Map of location and plans attached.

KOWALCZYK.LISIA  
JANE.1505562123  
Lisia Kowalczyk  
Bridge Administrator  
By direction of the Commander,  
Southeast Coast Guard District

Digitally signed by  
KOWALCZYK.LISIA.JANE.150556  
2123  
Date: 2025.09.10 08:28:35 -04'00'

INDEX OF PLANS

SHEET NUMBER	SHEET DESCRIPTION
1 OF 9	COVER SHEET
2 OF 9	EXISTING CONDITIONS PLAN
3 OF 9	PLAN AND ELEVATION (1 OF 6)
4 OF 9	PLAN AND ELEVATION (2 OF 6)
5 OF 9	PLAN AND ELEVATION (3 OF 6)
6 OF 9	PLAN AND ELEVATION (4 OF 6)
7 OF 9	PLAN AND ELEVATION (5 OF 6)
8 OF 9	PLAN AND ELEVATION (6 OF 6)
9 OF 9	TYPICAL SECTION

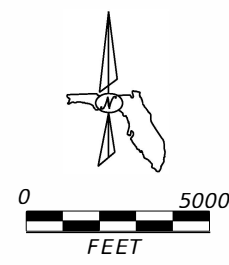
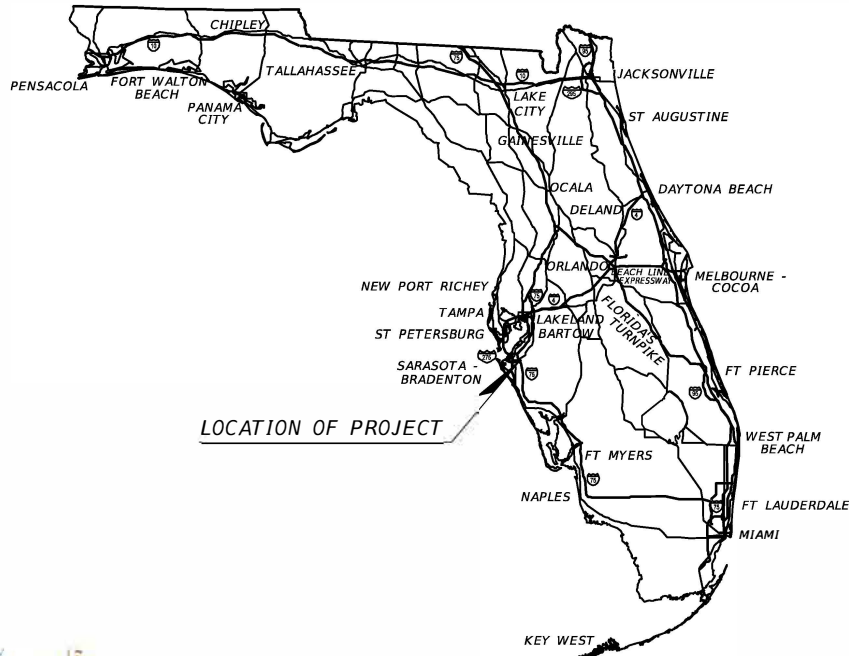
MANATEE COUNTY, FLORIDA  
FINANCIAL PROJECT ID 452856-1-34-01 (BRIDGE)  
COUNTY CIP NO. 6118061 (BRIDGE)



MANATEE COUNTY (13020)

FORT HAMER ROAD  
ADD LANES AND RECONSTRUCT  
NEW BRIDGE CONSTRUCTION  
FROM UPPER MANATEE RIVER ROAD TO NORTH RIVE ISLE RUN

PERMIT SUBMITTAL  
JUNE 2025

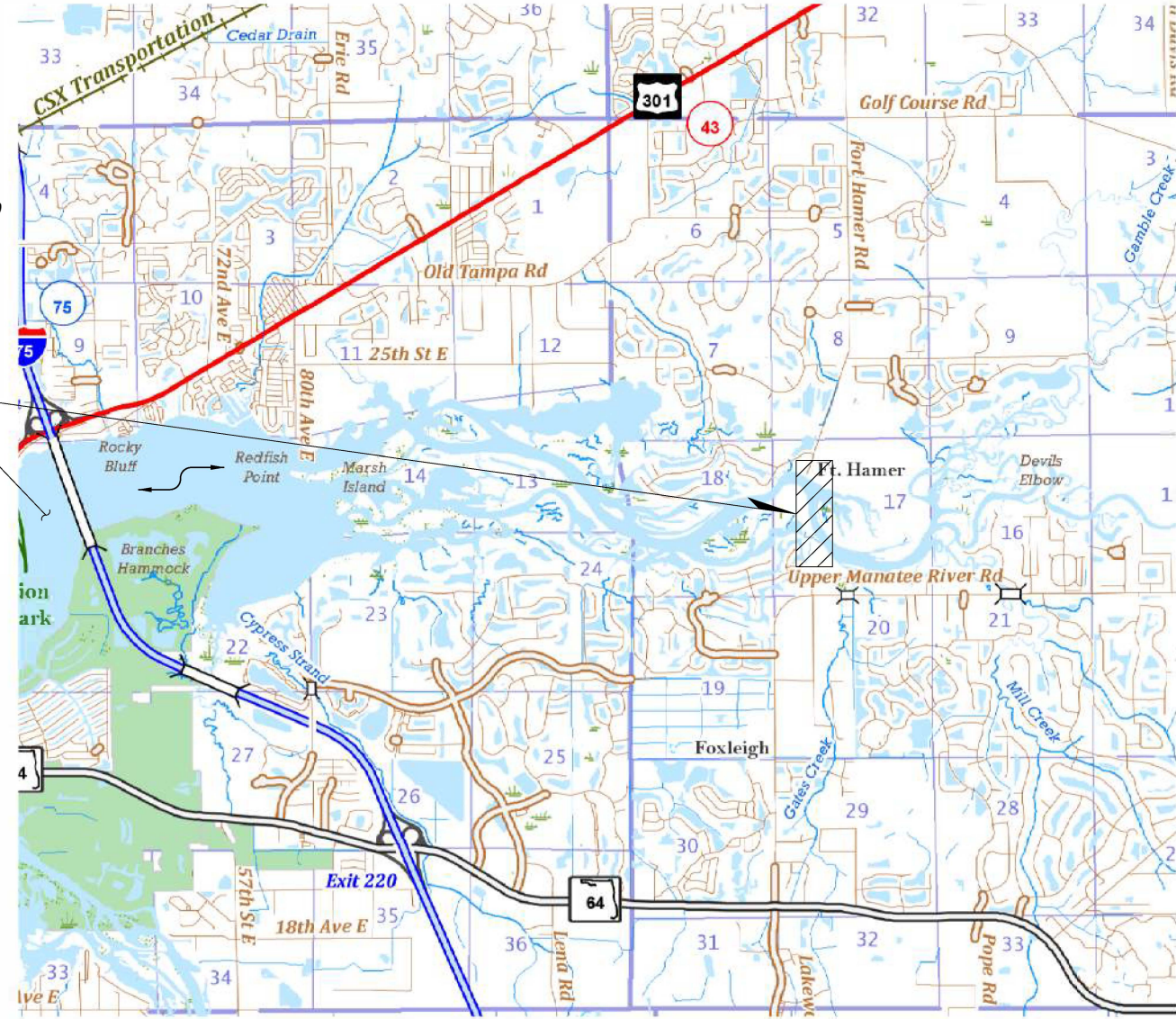


BRIDGE LOCATION

MANATEE RIVER

- NOTES:
1. THERE ARE NO BUILDINGS ADJACENT TO THE BRIDGE.
  2. PROPOSED BRIDGE VERTICAL SURVEY DATUM: NAVD 88
  3. EXISTING BRIDGE (BR. NO. 134123) VERTICAL SURVEY DATUM: NGVD 29  
DATUM CONVERSION EQUATION:  $NGVD\ 29 - 0.955FT = NAVD\ 88$ .
  4. MILE POINT OF BRIDGE FROM MOUTH OF MANATEE RIVER = 16 MILES

LEGEND:  
FLOW PATH



ROADWAY PLANS  
ENGINEER OF RECORD:

SHARI K. BARNWELL, P.E.  
P.E. LICENSE NUMBER 71357

KIMLEY-HORN AND ASSOCIATES, INC.  
201 N. FRANKLIN STREET, SUITE 1400  
TAMPA, FL 33602  
(813) 627-1460  
CONTRACT NO.: 23-R081325CD  
VENDOR NO.: 56-0885615

STRUCTURE PLANS  
ENGINEER OF RECORD:

JOSEPH A. ROBERTS, JR, P.E.  
P.E. LICENSE NUMBER 78547

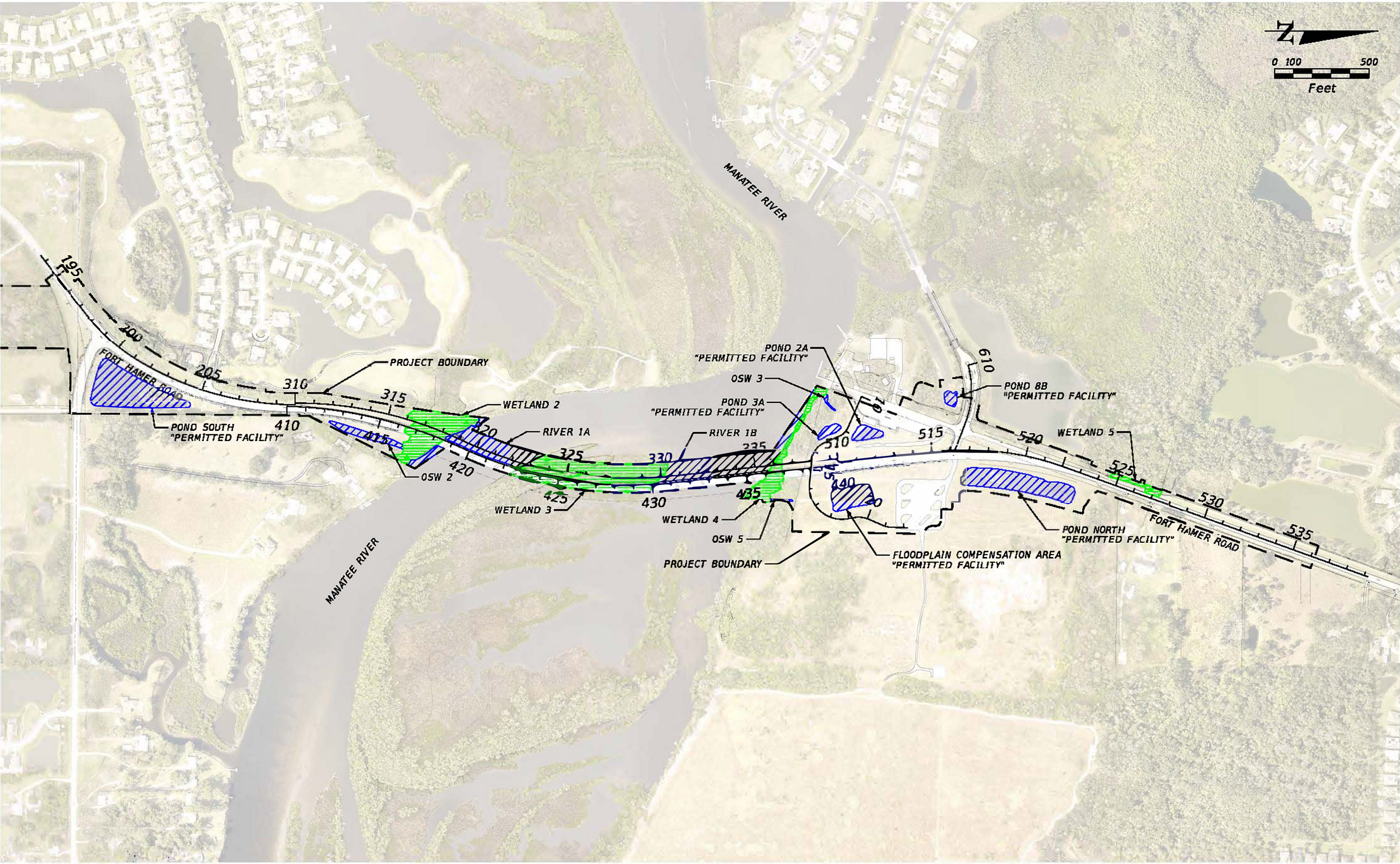
KIMLEY-HORN AND ASSOCIATES, INC.  
200 SOUTH ORANGE AVE., SUITE 600  
ORLANDO, FL 32801  
(407) 898-1511

COUNTY PROJECT MANAGER:

ANTHONY RUSSO, P.E.

CONSTRUCTION CONTRACT NO.	FISCAL YEAR	SHEET NO.
	25	1 OF 9



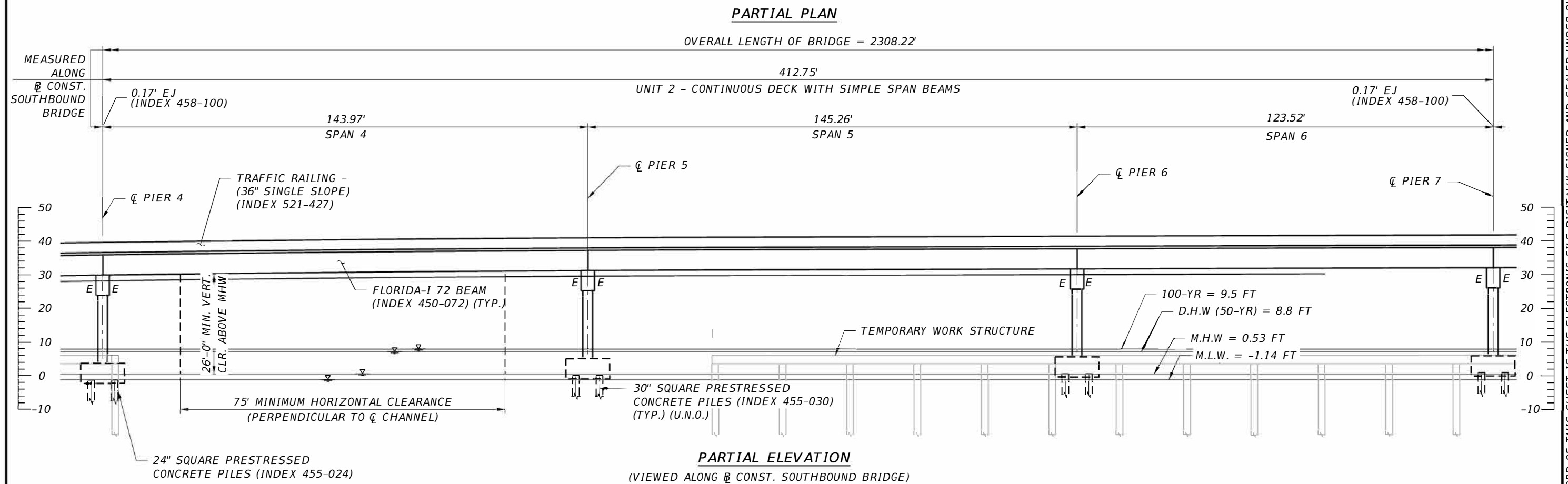
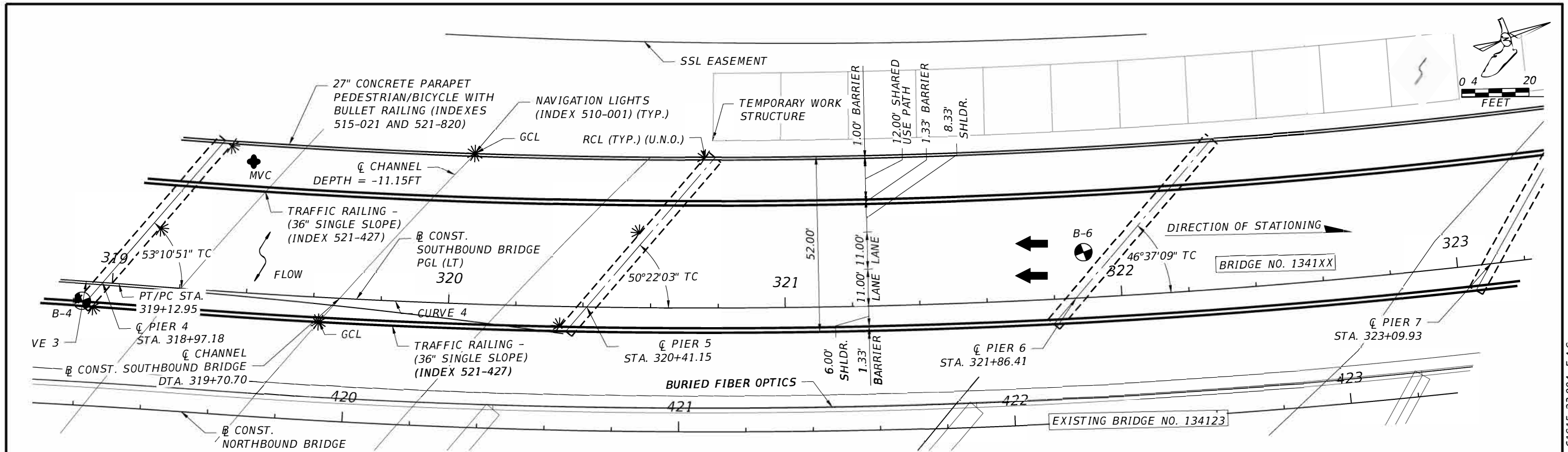


REVISIONS				ENGINEER OF RECORD	MANATEE COUNTY			EXISTING CONDITIONS PLAN	SHEET NO.
DATE	DESCRIPTION	DATE	DESCRIPTION		ROAD NO.	COUNTY	FINANCIAL PROJECT ID		
				SHARI K. BARNWELL, P.E. LICENSE NUMBER: 71357 KIMLEY-HORN AND ASSOCIATES, INC 201 N FRANKLIN STREET, SUITE 1400 TAMPA, FL 33602	FORT HAMER	MANATEE	452856-1-34-01	FORT HAMER BRIDGE OVER MANATEE RIVER 16 MILES FROM MOUTH OF RIVER	2 OF 9

THE OFFICIAL RECORD OF THIS SHEET IS THE ELECTRONIC FILE DIGITALLY SIGNED AND SEALED UNDER RULE 61G15-23.004, F.A.C.

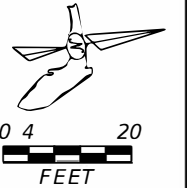
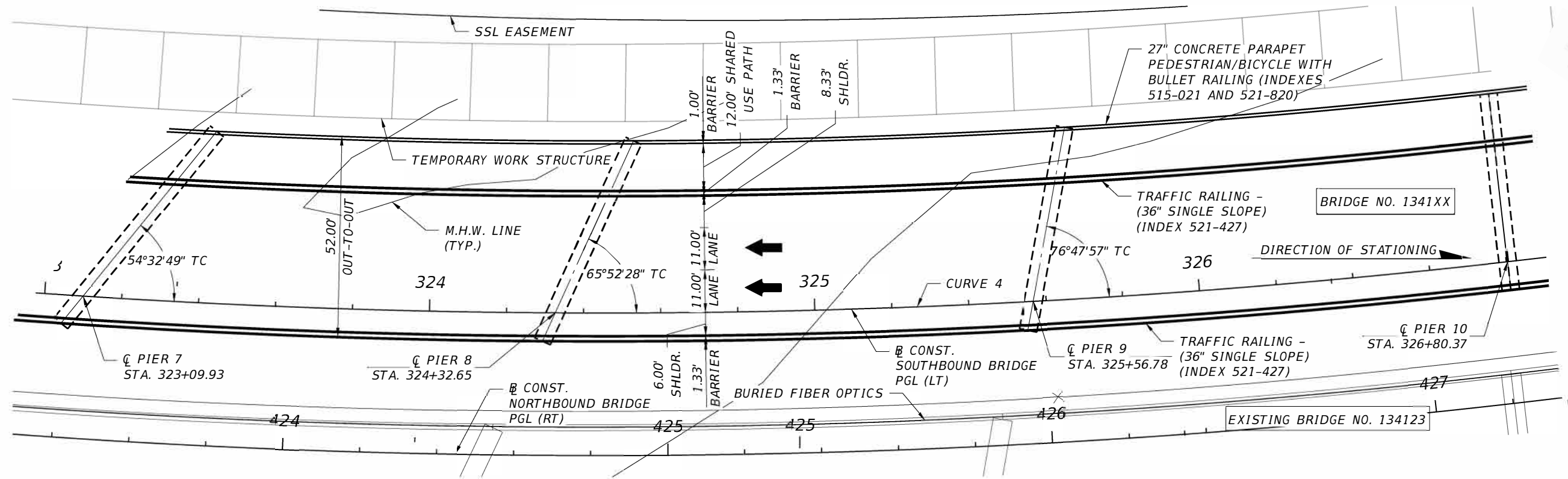






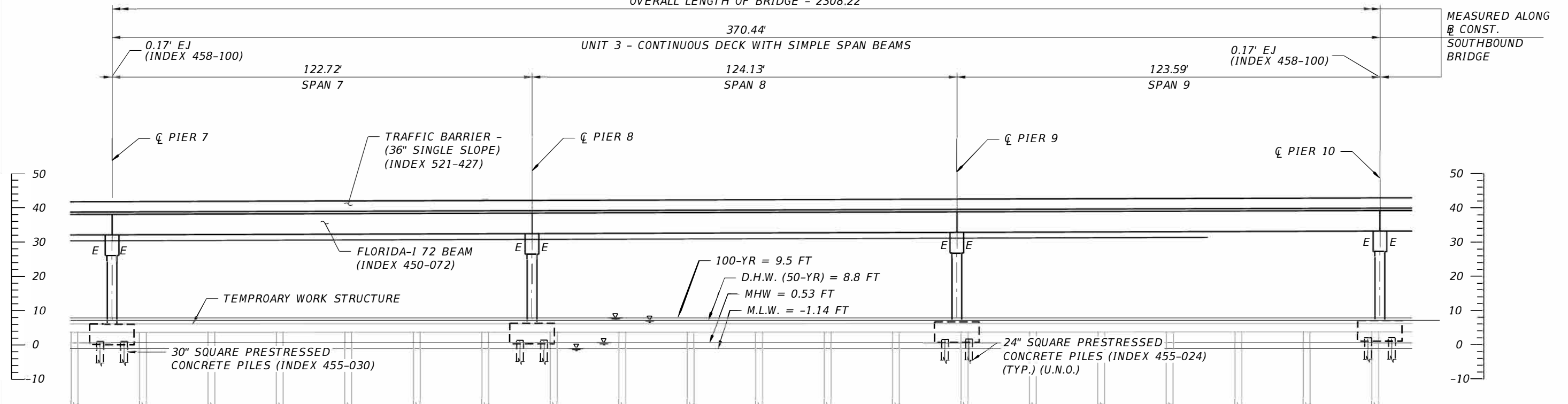
REVISIONS						JOSEPH A. ROBERTS JR., P.E. LICENSE NUMBER: 78547 KIMLEY-HORN AND ASSOCIATES, INC. 200 S. ORANGE AVE., SUITE 600 ORLANDO, FL 32801	DRAWN BY: IPG 02-25			MANATEE COUNTY CIP #6118061			SHEET TITLE:		REF. DWG. NO.
DATE	BY	DESCRIPTION	DATE	BY	DESCRIPTION		CHECKED BY: JAR 02-25						PLAN AND ELEVATION (2 OF 6)		
							DESIGNED BY:			ROAD NO.	COUNTY	FINANCIAL PROJECT ID	PROJECT NAME:		SHEET NO:
										FORT HAMER	MANATEE	452856-1-34-01	FORT HAMER BRIDGE OVER MANATEE RIVER 16 MILES FROM MOUTH OF RIVER		
							CHECKED BY:								4 OF 9

THE OFFICIAL RECORD OF THIS SHEET IS THE ELECTRONIC FILE DIGITALLY SIGNED AND SEALED UNDER RULE 61G15-23.004, F.A.C.



PARTIAL PLAN

OVERALL LENGTH OF BRIDGE - 2308.22'

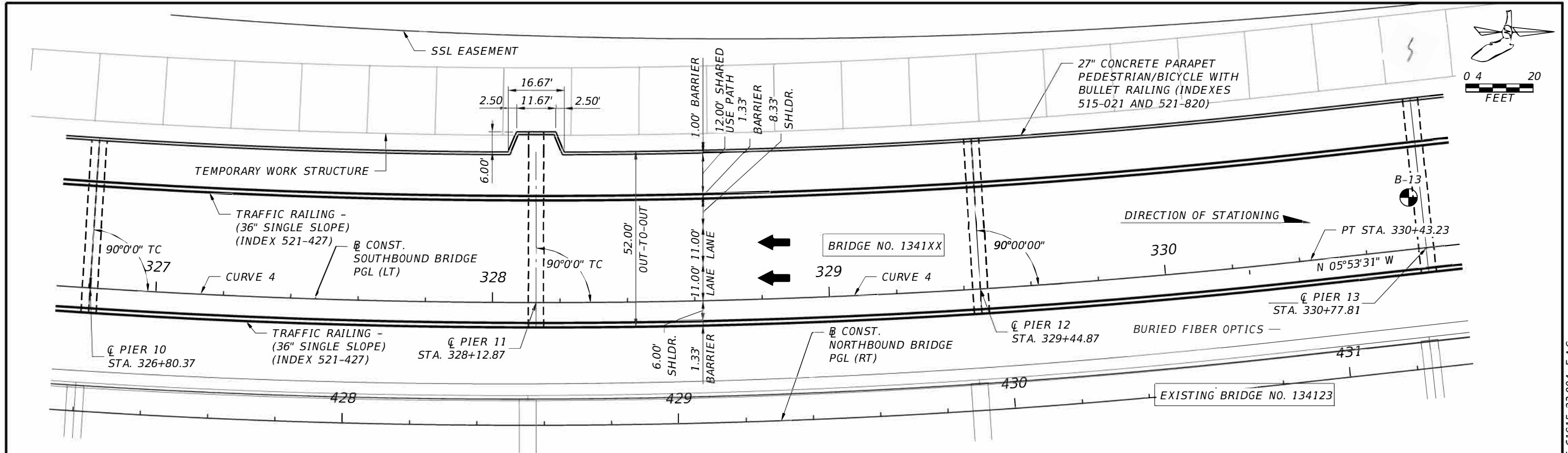


PARTIAL ELEVATION

(VIEWED ALONG CONST. SOUTHBOUND BRIDGE)

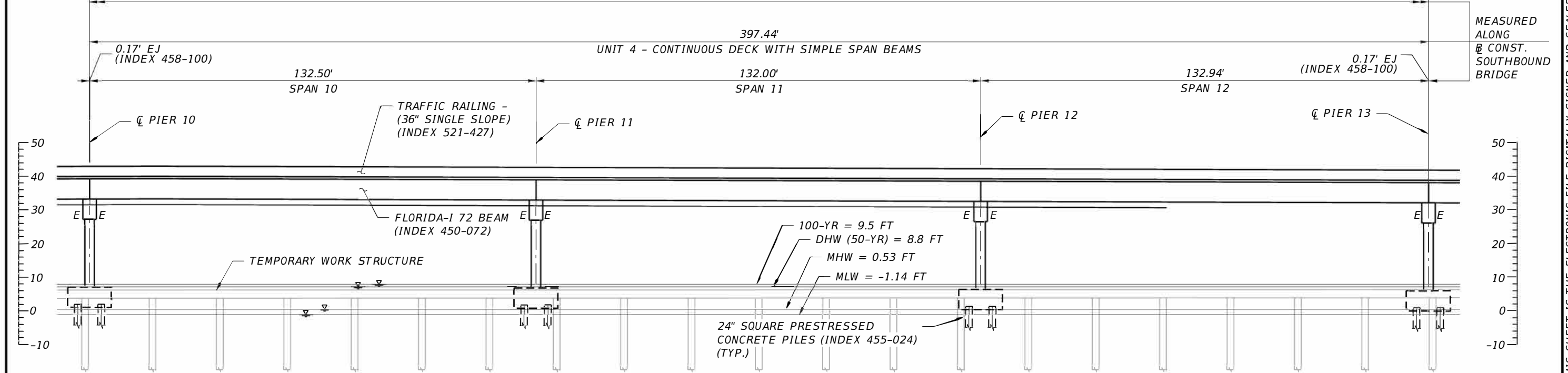
BRIDGE NO. XXXXXX

REVISIONS						JOSEPH A. ROBERTS JR., P.E. LICENSE NUMBER: 78547 KIMLEY-HORN AND ASSOCIATES, INC. 200 S. ORANGE AVE., SUITE 600 ORLANDO, FL 32801	DRAWN BY: IPC 02-25 CHECKED BY: JAR 02-25 DESIGNED BY: CHECKED BY:			MANATEE COUNTY CIP #6118061			SHEET TITLE:  PLAN AND ELEVATION (3 OF 6)		REF. DWG. NO.
DATE	BY	DESCRIPTION		DATE	BY		DESCRIPTION		ROAD NO.	COUNTY	FINANCIAL PROJECT ID	PROJECT NAME:		SHEET NO.	
									FORT HAMER	MANATEE	452856-1-34-01	FORT HAMER BRIDGE OVER MANATEE RIVER 16 MILES FROM MOUTH OF RIVER		5 OF 9	



PARTIAL PLAN

OVERALL LENGTH OF BRIDGE = 2308.22'



PARTIAL ELEVATION

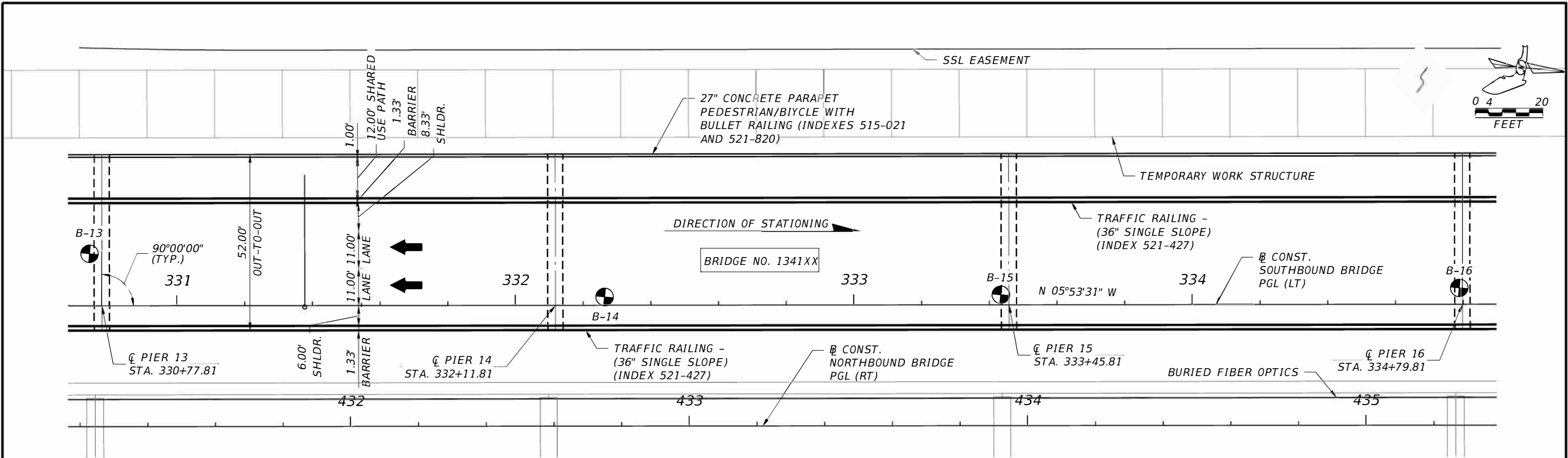
(VIEWED ALONG CL CONST. SOUTHBOUND BRIDGE)

BRIDGE NO. XXXXXX

REVISIONS						JOSEPH A. ROBERTS JR., P.E. LICENSE NUMBER: 78547 KIMLEY-HORN AND ASSOCIATES, INC. 200 S. ORANGE AVE., SUITE 600 ORLANDO, FL 32801	DRAWN BY: IPG 02-25 CHECKED BY: JAR 02-25 DESIGNED BY: CHECKED BY:	MANATEE COUNTY CIP #6118061			SHEET TITLE:  PLAN AND ELEVATION (4 OF 6)  FORT HAMER BRIDGE OVER MANATEE RIVER 16 MILES FROM MOUTH OF RIVER	REF. DWG. NO.
DATE	BY	DESCRIPTION	DATE	BY	DESCRIPTION			ROAD NO.	COUNTY	FINANCIAL PROJECT ID		
								FORT HAMER	MANATEE	452856-1-34-01		

THE OFFICIAL RECORD OF THIS SHEET IS THE ELECTRONIC FILE DIGITALLY SIGNED AND SEALED UNDER RULE 61G15-23.004, F.A.C

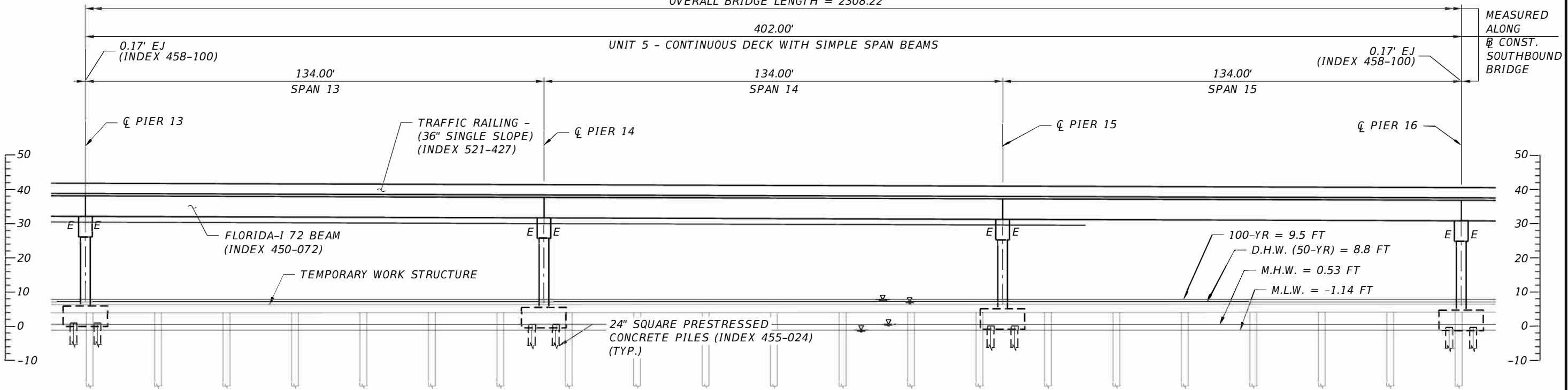




PARTIAL PLAN

OVERALL BRIDGE LENGTH = 2308.22'

UNIT 5 - CONTINUOUS DECK WITH SIMPLE SPAN BEAMS



PARTIAL ELEVATION

(VIEWED ALONG  $\varnothing$  CONST. SOUTHBOUND BRIDGE)

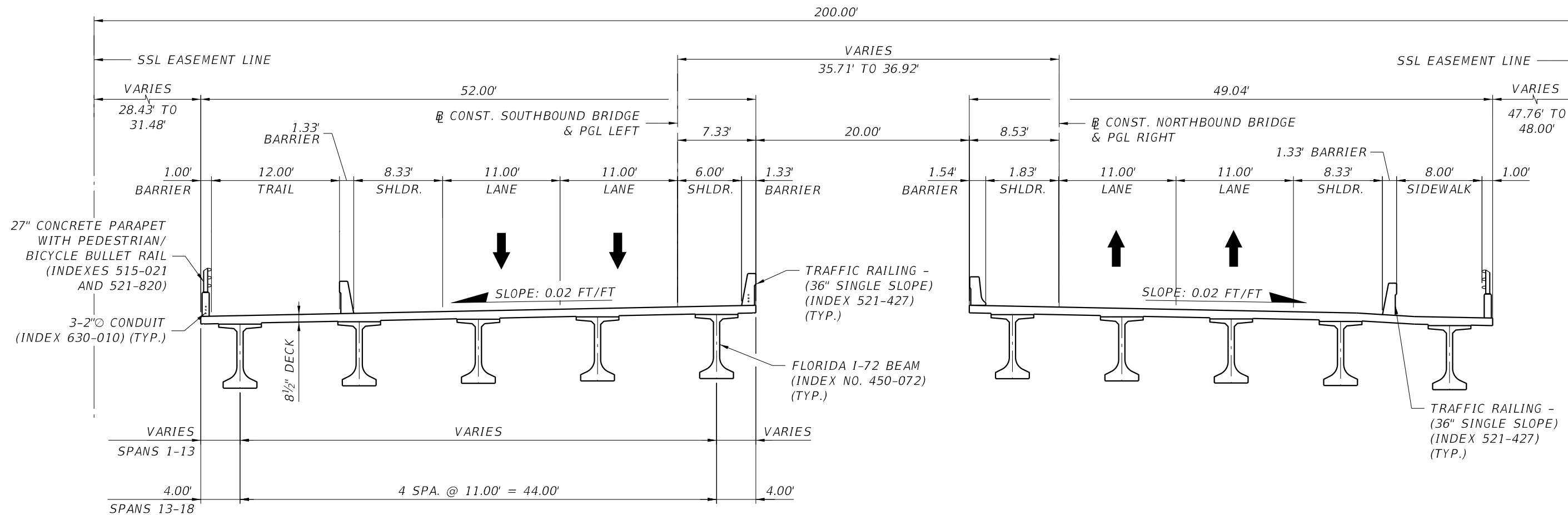
BRIDGE NO. XXXXXX

REVISIONS						JOSEPH A. ROBERTS JR., P.E. LICENSE NUMBER: 78547 KIMLEY-HORN AND ASSOCIATES, INC. 200 S. ORANGE AVE., SUITE 600 ORLANDO, FL 32801	DRAWN BY: IPG 02-25	MANATEE COUNTY CIP #6118061			SHEET TITLE:		REF. DWG. NO.
DATE	BY	DESCRIPTION	DATE	BY	DESCRIPTION		CHECKED BY: JAR 02-25				PROJECT NAME:		
							DESIGNED BY:	ROAD NO.	COUNTY	FINANCIAL PROJECT ID	FORT HAMER BRIDGE OVER MANATEE RIVER 16 MILES FROM MOUTH OF RIVER		SHEET NO.
							CHECKED BY:	FORT HAMER	MANATEE	452856-1-34-01			7 OF 9

THE OFFICIAL RECORD OF THIS SHEET IS THE ELECTRONIC FILE DIGITALLY SIGNED AND SEALED UNDER RULE 61G15-23.004, F.A.C







PROPOSED BRIDGE TYPICAL SECTION

EXISTING BRIDGE TYPICAL SECTION

BRIDGE NO. XXXXXX

REVISIONS						JOSEPH A. ROBERTS JR., P.E. LICENSE NUMBER: 78547 KIMLEY-HORN AND ASSOCIATES, INC. 200 S. ORANGE AVE., SUITE 600 ORLANDO, FL 32801	DRAWN BY: IPG 02-25 CHECKED BY: JAR 02-25 DESIGNED BY: FORT HAMER	MANATEE COUNTY CIP #6118061			SHEET TITLE:  TYPICAL SECTION		REF. DWG. NO.
DATE	BY	DESCRIPTION	DATE	BY	DESCRIPTION			ROAD NO.	COUNTY	FINANCIAL PROJECT ID	PROJECT NAME:		SHEET NO.
								FORT HAMER	MANATEE	452856-1-34-01	FORT HAMER BRIDGE OVER MANATEE RIVER 16 MILES FROM MOUTH OF RIVER		9 OF 9