



U.S. Department  
of Homeland Security  
**United States  
Coast Guard**

---

## LOCAL NOTICE TO MARINERS

**District: 14**

**Week: 03/21**

January 20, 2021  
ISSUED BY:  
Commander (dpw)  
Fourteenth Coast Guard District  
300 Ala Moana Boulevard Room 9-220  
Honolulu, HI 96850-4982  
Telephone: (808) 535-3408  
Email: D14-DG-PJ-dpw@uscg.mil  
Website: <https://www.navcen.uscg.gov/>

**Note:**

Unless otherwise indicated, missing and destroyed structures are presumed to be in the immediate vicinity, possibly beneath the surface. Any life threatening or hazardous conditions including off station, missing, or inoperative aids to navigation should be reported immediately to U.S. Coast Guard Sector Honolulu at (808) 842-2600 and U.S. Coast Guard Sector Guam at (671) 355-4822. Mariners should proceed with caution.

**References:**

Light List, Volume VI, Pacific Coast and Pacific Islands, 2020 Edition (COMDTPUB P16502.6).  
U.S. Coast Pilot 10, Pacific Coast : Oregon, Washington, Hawaii, Pacific Islands 2020 (1st Edition). Coast Pilots, along with corrections, are available at:  
<http://www.nauticalcharts.noaa.gov>

Navigation information having been of immediate concern to the mariner, and promulgated by the following broadcasts, have been incorporated in this notice when still significant:  
COMCOGARD SECTOR HONOLULU HI BNMs: 005-21 to 007-21  
COMCOGARD SECTOR GUAM BNMs: 015-21 to 020-21

---

### ABBREVIATIONS

**A through H**

ADRIFT - Buoy Adrift  
AICW - Atlantic Intracoastal Waterway  
Al - Alternating  
B - Buoy  
BKW - Breakwater  
bl - Blast  
BNM - Broadcast Notice to Mariner  
bu - Blue  
C - Canadian  
CHAN - Channel  
CGD - Coast Guard District  
C/O - Cut Off  
CONT - Contour  
CRK - Creek  
CONST - Construction  
DAYMK/Daymk - Daymark  
DBN/Dbn - Daybeacon  
DBD/DAYBD - Dayboard  
DEFAC - Defaced  
DEST - Destroyed  
DISCON - Discontinued  
DMGD/DAMGD - Damaged  
ec - eclipse  
EST - Established Aid  
ev - every  
EVAL - Evaluation  
EXT - Extinguished  
F - Fixed  
fl - flash  
FI - Flashing  
G - Green  
GIWW - Gulf Intracoastal Waterway  
HAZ - Hazard to Navigation

**I through O**

I - Interrupted  
ICW - Intracoastal Waterway  
IMCH - Improper Characteristic  
INL - Inlet  
INOP - Not Operating  
INT - Intensity  
ISL - Islet  
Iso - Isophase  
kHz - Kilohertz  
LAT - Latitude  
LB - Lighted Buoy  
LBB - Lighted Bell Buoy  
LHB - Lighted Horn Buoy  
LGB - Lighted Gong Buoy  
LONG - Longitude  
LNM - Local Notice to Mariners  
LT - Light  
LT CONT - Light Continuous  
LTR - Letter  
LWB - Lighted Whistle Buoy  
LWP - Left Watching Properly  
MHz - Megahertz  
MISS/MSNG - Missing  
Mo - Morse Code  
MRASS - Marine Radio Activated Sound Signal  
MSLD - Misleading  
N/C - Not Charted  
NGA - National Geospatial-Intelligence Agency  
NO/NUM - Number  
NOS - National Ocean Service  
NW - Notice Writer  
OBSCU - Obscured  
OBST - Obstruction

**P through Z**

PRIV - Private Aid  
Q - Quick  
R - Red  
RACON - Radar Transponder Beacon  
Ra ref - Radar reflector  
RBN - Radio Beacon  
REBUILT - Aid Rebuilt  
RECOVERED - Aid Recovered  
RED - Red Buoy  
REFL - Reflective  
RRL - Range Rear Light  
RELIGHTED - Aid Relit  
RELOC - Relocated  
RESET ON STATION - Aid Reset on Station  
RFL - Range Front Light  
RIV - River  
RRASS - Remote Radio Activated Sound Signal  
s - seconds  
SEC - Section  
SHL - Shoaling  
si - silent  
SIG - Signal  
SND - Sound  
SPM - Single Point Mooring Buoy  
SS - Sound Signal  
STA - Station  
STRUCT - Structure  
St M - Statute Mile  
TEMP - Temporary Aid Change  
TMK - Topmark  
TRLB - Temporarily Replaced by Lighted Buoy  
TRLT - Temporarily Replaced by Light  
TRUB - Temporarily Replaced by Unlighted Buoy

HBR - Harbor  
HOR - Horizontal Clearance  
HT - Height

OBSTR - Obstruction  
Oc - Occulting  
ODAS - Anchored Oceanographic Data Buoy

USACE - Army Corps of Engineers  
W - White  
Y - Yellow

**Additional Abbreviations Specific to this LNM Edition:**

MSLD SIG - Misleading Signal

---

---

**SECTION I - SPECIAL NOTICES**

This section contains information of special concern to the Mariner.

---

**U.S. Coastal and Internal Waters – U.S. Federal Aids to Navigation – Datum Shift to WGS 84 (49/20)**

The positions of Aids to Navigation contained in the U.S. Light List Volumes will be converted to WGS 84 to align with Datum used on Official U.S. Electronic Navigational Charts (ENC) issued by the U.S. Hydrographic Offices (NGA, NOAA, USACE). The positions were previously expressed in NAD 83 Datum to align with U.S. Hydrographic Office(s) paper charts. The 2021 Light List Volumes will contain the adjusted positions. No chart or Light List corrections will be published in the Local Notice to Mariners.

**NOAA - DISCONTINUATION OF PRINTED PAPER CHARTS (04/20)**

On November 15, 2019, NOAA formerly announced in the Federal Register (Docket #2019-24807) that they would begin a 5-year process of discontinuing their traditional paper, or raster, charts by 2025. NOAA intends to gradually 'sunset' raster chart products and is introducing an option to create custom ENC data based charts that can be printed as a paper copy locally or commercially, via one of their certified third party printers. More detailed information regarding this transition is available from <https://nauticalcharts.noaa.gov/publications/docs/raster-sunset.pdf>. Comments/questions on the Federal Register Notice and the NOAA Custom Chart application should be submitted at <https://www.nauticalcharts.noaa.gov/customer-service/assist/>. Other concerns may be directed to your local NOAA Navigation Manager, <https://nauticalcharts.noaa.gov/customer-service/regional-managers/index.html>. In order to identify and overcome the regulatory challenges associated with this transition including but not limited to updating commercial vessel carriage requirements and maritime safety information processes, NOAA will continue to work directly with its Agency charting partners. A prototype version of the NOAA Custom Chart Tool is available at <https://devgis.charttools.noaa.gov/pod/>.

**VHF-DSC RADIO EQUIPMENT INSTALLATION REQUIREMENT FOR INSPECTED PASSENGER AND COMMERCIAL FISHING VESSELS (51/15)**

On January 20, 2015, the Coast Guard notified the Federal Communications Commission (FCC) that it had published a Federal Register notice declaring Sea Area A11 to be within twenty nautical miles seaward of the territorial baseline along the East, West, and Gulf coasts of the United States, excluding Alaska, but including Hawaii, Puerto Rico, Guam, the Virgin Islands of the United States, and the Northern Mariana Islands of Saipan, Tinian, and Rota. This determination was made because the Coast Guard now has service, in Sea Area A1, under its Rescue 21 Distress System coverage. Consequently, and in accordance with the requirements of Title 47 Code of Federal Regulations (CFR) 80.905(a)(1), inspected passenger vessels that carry more than six passengers, with at least one for hire, and commercial fishing vessels of 300 gross tons and upward, operating in those waters, must upgrade to VHF-DSC3 radio equipment beginning one year after notification or not later than January 20, 2016.

In accordance with references 46 CFR 121.502, 46 CFR 184.502 and 28 CFR 28.245, a vessel must comply with the applicable requirements for any radio installation, including the requirements for a station license and installation certificates to be issued by the FCC as set forth in 47 CFR Part 80. Vessels that operate solely within twenty nautical miles of land must be equipped with a radiotelephone installation that conform to the appropriate performance standards in § 80.1101(c)(2).

The FCC released a Public Notice (DA 15-466) on April 16, 2015 announcing this new requirement and questions concerning that notice may be directed to Mr. Tim Maguire of the Mobility Division, Wireless Telecommunications Bureau at (202) 418-2155, or [Tim.Maguire@FCC.gov](mailto:Tim.Maguire@FCC.gov).

Questions concerning this notice may be directed to the Office of Commercial Vessel Compliance, Commandant (CG-CVC) at 202-372-1251 or [CG-CVC-1@uscg.mil](mailto:CG-CVC-1@uscg.mil).

**2021 LIGHT LIST (03/21)**

2021 Light Lists are available on the USCG Navigation Center's website at: <http://www.navcen.uscg.gov/?pageName=lightLists>. Coast Guard Light Lists are a means for communicating aids to navigation information to the maritime public. Local Notice to Mariners will continue to advise Light List corrections and NAVCEN will continue to publish a compilation of corrections. Complete versions of the 2021 Light Lists are updated weekly on the NAVCEN website and mariners should download applicable copies and updates as needed at: <http://www.navcen.uscg.gov/?pageName=lightListWeeklyUpdates>. A summary of weekly 2021 Light List corrections are available at: <https://www.navcen.uscg.gov/?pageName=lightListCorrections>.

**U.S. COAST GUARD TO TEST AUTOMATIC IDENTIFICATION SYSTEM (AIS) AIDS TO NAVIGATION (04/14)**

In the near future, the U.S. Coast Guard and other authorized agencies and organizations (i.e., U.S. Army Corps of Engineers, Marine Exchange of Alaska) will begin transmitting AIS ATON messages and marine safety information via AIS for testing and evaluation. The exact content, location, and times of these broadcasts will be announced in future Local Notices to Mariners.

AIS is an internationally adopted radio communication protocol that enables the autonomous and continuous exchange of navigation safety related messages amongst vessels, lifeboats, aircraft, shore stations, and aids to navigation (AIS ATON). AIS ATON stations broadcast their presence, identity (9-digit Marine Mobile Service Identity (MMSI) number), position, and status at least every three minutes or as needed. These broadcasts can originate from an AIS station located on an existing physical aid to navigation (Real AIS ATON) or from another location (i.e., AIS Base Station). An AIS Base Station signal broadcasted to coincide with an existing physical aid to navigation is known as a Synthetic AIS ATON. An electronically charted, but non-existent as a physical aid to navigation, is identified as a Virtual AIS ATON. The latter two can be used to depict an existing aid to navigation that is off station or not watching properly or to convey an aid to navigation that has yet to be charted. All three variants can be received by any existing AIS mobile device, but they would require an external system for their portrayal (i.e., AIS message 21 capable ECDIS, ECS, radar, PC). How they are portrayed currently varies by manufacturer, but the future intention is for the portrayal to be in accordance with forthcoming International Standards (i.e., IEC 62288 (Ed. 2), IHO S-4 (Ed. 4.4.0)).

Mariners capable of receiving and displaying these test AIS messages are encouraged to provide feedback and report any anomalies to the USCG NAVCEN Website: <https://www.navcen.uscg.gov> | Contact Us Tab | Subject: AIS | Category: AIS Testing.

#### **USCG NATION-WIDE - AUTOMATIC IDENTIFICATION SYSTEM (NAIS) NETWORK TESTING (31/15)**

On August 10, 2015, the U.S. Coast Guard will begin AIS Application Specific Message (AIS-ASM) testing. The test transmissions will occur between 0001-2359Z, 7 days/week. The test messages can be identified by their Maritime Mobile Service (MMSI) number: 300669139 or 00366613 and by the words "USCG TEST" within the contents of the message. Mariners are requested to contact the USCG Navigation Center at 1-703-313-5900 or TIS-PF-NISWS@uscg.mil with any questions, comments, or to report any safety and/or operational impacts caused by this testing.

Application Specific Messages to be tested include: messages 6, 8, 25, and 26, DAC=367, FI's=22, 29, 33, 35; AIS Safety Related Text (SRM) messages: 8 (DAC=001, FI=0) and 14. The messages will be of various lengths, using repetitions of the text "USCG TEST". For further information on AIS messages, DACs, and FI's visit <https://www.navcen.uscg.gov/?pageName=AISMessages>.

#### **USCG NATION-WIDE - SCHEDULED REALIGNMENT OF BROADCAST SERVICES (31/15)**

U.S. Coast Guard Communication Stations Chesapeake, Boston, New Orleans, Charleston, Miami, Pt Reyes, Honolulu, Cambria, Astoria, Kodiak, San Juan and Guam MF and HF broadcast services may be impacted commencing August 3, 2015 by scheduled realignment of system infrastructure. The Coast Guard is realigning technical service delivery to enhance information assurance and increase cybersecurity. Mariners are advised that this realignment may impact broadcast services including search and rescue information, weather forecasts, and notice to mariners that are delivered via NAVTEX, SITOR, and HF automated voice broadcast. While the Coast Guard has made significant efforts to ensure continued service delivery, we are advising mariners of potential service disruptions in order to enable reporting by mariners of any suspected loss that is experienced by a mariner. Report suspected instances of non-receipt to the nearest Coast Guard Communications Station.

#### **PACIFIC OCEAN - HAZARD TO NAVIGATION - MARINE DEBRIS (07/12)**

With the increase in ocean debris sightings along the coastlines of the Pacific Ocean, mariners are reminded to submit debris sighting reports to the National Oceanic and Atmospheric Administration (NOAA) Marine Debris Program at [DisasterDebris@noaa.gov](mailto:DisasterDebris@noaa.gov), and the University of Hawaii oceanographic research center at [marinedebris@soest.hawaii.edu](mailto:marinedebris@soest.hawaii.edu). For inshore sightings, please use the State of Hawaii <https://dlnr.hawaii.gov/dobor/reportmarinedebrishawaii/>.

#### **PACIFIC OCEAN - PHILIPPINE SEA - MARIANA ISLANDS - CAROLINE ISLANDS - ELECTRONIC NAVIGATION - INACCURATE RANGELINE (02/11)**

The U.S. Coast Guard has become aware that Coast Guard information used to depict a rangeline on NOAA Electronic Navigational Charts (ENC) may not be of sufficient accuracy to accurately portray the rangeline on the ENC. Mariners are cautioned that the position of a rangeline as shown on an ENC may not reflect its true position.

#### **HI ISLANDS - HAWAII - HILO HARBOR - AIS TEMPORARY DEACTIVATION (07/19)**

All mariners be advised the Coast Guard has temporarily deactivated AIS broadcasting for the following aids to navigation in the Hilo, HI area:

28035 Hilo Harbor Entrance Lighted Buoy 1 AIS: MMSI 993699986  
28040 Hilo Harbor Breakwater Light AIS: MMSI 993699987  
28055 Hilo Harbor Lighted Buoy 3 AIS: MMSI 993699985  
28070 Hilo Harbor Lighted Buoy 4 AIS: MMSI 993699984

#### **HI ISLANDS - HAWAII - ISAAC HALE PARK (02/19)**

The waterway leading to Pohoiki Bay boat ramp at Isaac Hale Park is un-navigable due to shoaling and sand accumulation. The light and day boards have been temporarily removed from Pohoiki Bay Breakwater Light 2 (LLNR 28135).

#### **HI ISLANDS - HAWAII - AUTONOMOUS WATERCRAFT MISSION (50/20)**

Jupiter Research Foundation, will be transecting an autonomous, unmanned maritime vehicle (Wave Glider-WG, named "Europa") on a round trip mission from Puako Bay, Hawaii Island, eastward more or less along latitude 18° North on the high seas to waters off of the Revillagigedo Archipelago, Mexico. It will transect south around the Big Island in the contiguous zone adjacent to and beyond its territorial sea that extends seaward between 12nm and 24nm from its baselines offering a 12nm "swim lane". The transit will commence on or about Dec 14, 2020 and is expected to terminate on or about April 15th, 2021.

Operations will consist of scientific ocean data collection. The Wave Glider carries no fuel, lubricants, or hydrocarbons, is wave powered, remotely attended from our Wave Glider Operations Center (WGOC), moving at speeds of less than 2 knots, and designed to automatically give way if encountered by a vessel transmitting AIS. It is approximately 9' x 2.5' (surfboard size), copper in color, with a contact plaque and a mast extending 2' above the water surface bearing an orange flag and white light. Mariners are requested to transit the area with caution. For more details contact Jupiter Research Foundation 24/7 by email at admin@jupiterfoundation.org with your inquiries.

#### **HI ISLANDS - MAUI - PIER CONSTRUCTION (37/20)**

Hawaiian Dredging is performing Substructure Work at Pier 2 in Kahului Harbor. Project Duration is from September 2020 till January 2021 and work hours are Monday through Friday from 6:00 AM to 6:00 PM.

HDCC has a variety of flags (Diver Down Flag and Code Alpha Flag) that are up during work hours to give a visual to water vessels passing by. Both flags let water vessels know that there are divers down below and vessels should keep clear of the area and pass by with slow speed. There are also "No Wake Zone" signs on both ends of the jobsite facing towards the water channel.

For information or questions contact:

PROJECT MANAGER: Richard Aoki: (808) 306-2630

PROJECT ENGINEER: Toby Inouye (Primary Contact) (808) 478-7008

GENERAL FOREMAN: Ron Wongwui (Primary Contact) (808) 726-0192

#### **HI ISLANDS - OAHU - SHOALING (25/17)**

There has been a report of increased shoaling in Maunaloa Bay, between Maunaloa Bay Daybeacon 1A (LLNR 28935) and Maunaloa Bay Daybeacon 2 (LLNR 28940) when transiting to and from Hawaii Kai. The depth of the water is being estimated around 2-3 feet at low tide. All vessels are requested to remain vigilant regarding water depth when operating in and out of this channel.

#### **HI ISLANDS - OAHU - DREDGING (48/19)**

Healy Tibbits Builders, INC will be conducting dredge operations at the Ala Wai Canal and will commence on or around December 10, 2019 and will be completed on or about April 30, 2021 and seawall repair related operation will continue until on or about February 26, 2021. The following vessels will be moored at the Ala Wai Small Boat Harbor:

Crane Barge Weeks 538(160' x 50') Will be moored on anchors adjacent to Magic Island.

Dump Scow Weeks 260 (197' x 45')

Weeks Tug Carolyn (59' x 22')

Tug American Emerald (63.7' x 23.5')

Weeks Tug Roberta G (46' x 16')

Miscellaneous Picket boats and work skiffs.

The following vessels will either be moored or working within the Ala Wai Canal between the upper canal area near the Waikiki-Kapahulu Public Library and the Ala Moana Blvd bridge:

Sectional Excavator Dredge Barge (80' x 40'). Will be moored on spuds.

Sectional Hopper Scow Barge (80' x 40').

Work skiffs.

In addition, a 12-inch HDPE plastic pipeline will be used to transport the dredge material from the Sectional Hopper Scow Barge to the Dump Scow WEEKS 260. The pipeline will be floating within the canal and submerged on the bottom within the Ala Wai Harbor area.

Dredging operations will be undertaken seven (7) days per week, the Dump Scow WEEKS 260 will be towed by either the tug Carolyn or the tug American Emerald (or substitute tug) three (3) times per day from Ala Wai Small Boat Harbor to the South O'ahu Offshore Dredge Material Disposal Site (ODMS). The call sign for the tug Carolyn is WY 2931 and the call sign for the tug American Emerald is WDC6392. VHF Channel 16 will be monitored. Mariners are requested to use extreme caution while transiting the work area.

If you have any questions or need more information, please contact Project Manager Dane Korté at (908) 463-9307.

### **HI ISLANDS - OAHU - DREDGE (01/20)**

Hawaiian Dredging is performing Substructure Work at Pier 36. The following entail the work being performed:

- 1) Demo Work to Concrete Under the Pier.
- 2) Prepping and Placing Formwork Under the Pier.
- 3) Prepping and Placing Rebar for Repairs (including welding work)
- 4) Concrete Pours

The project duration is from December 2020 to May 2021 and work days are Monday through Friday from 6:30 AM to 3:00 PM (except on Concrete Pour Days where work days can end at 5:00PM).

Contact Information:

PROJECT MANAGER: Richard Aoki (808) 306-2630

PROJECT ENGINEER: Toby Inouye (Primary Contact) (808) 478-7008

GENERAL FOREMAN: Anthony Bui (Primary Contact) (808) 479-0465

### **HI ISLANDS - OAHU - HONOLULU HARBOR DREDGE (03/21)**

Honolulu Harbor Maintenance Dredging Project at Honolulu Harbor will commence on or about February 8th 2021. For the dredging related operations, the following vessels will either be moored or working within Honolulu Harbor or the entrance channel to Honolulu Harbor:

- Crane Barge WEEKS 544 (160' x 65')
- Dumps Scow DUTRA KS10 (246' x 45')
- Dump Scow MCamis Sand Island (175' x 45')
- Dump Scow WEEKS 260 (197' x 45')
- Pacific Tug John Brix (136' x 35')
- Tug Carolyn (59' x 22')
- Workboat Roberta G (46' x 16')
- Miscellaneous picket boats and work skiffs.

Dredging operations will be undertaken seven (7) days per week, the Dump Scow Dutra KS10 will be towed by the tug John Brix (or substitute tug) up to two (2) times per day from Honolulu Harbor to the South O'ahu Offshore Dredge Material Disposal Site (ODMS). The MCamis Scow Sand Island will be round trip towed by the tug John Brix (or substitute tug) one (1) time per day from Honolulu Harbor to Kalaeloa Harbor. The call sign for the Tug John Brix is WY 4853. VHF Channel 16 will be monitored. Mariners are requested to use extreme caution while transiting the work area.

Any questions or need more information, please contact Project Manager Cristian Caicedo at (808) 630-0179.

See enclosure 2.

### **HI ISLANDS - OAHU - DIVE OPERATIONS (39/20)**

Par Hawaii, Inc. Will be conduction dive operations for their maintenance project activities at its Single Point Mooring (SPM) subsea 30" crude pipeline extending offshore from Barbers Point near the south-west corner of Oahu. This maintenance project is scheduled to commence, weather permitting, on September 29, 2020 and conclude on March 01, 2021 as weather permits. Actual work will occur nearshore in approximately 34 ft. of water depth offshore of Barbers Point and at the SPM buoy and entire length of pipelines.

The following vessels will be onsite at various times during the work:

- Dive support/Work boat "Huki Pau" (74'x21')
- 10-Meter Ambar RHIB (32'x10.3')
- 8-Meter Ambar RHIB (26'x9.4')
- Tugboat "Noke" (65'x24')
- Tugboat "Na'ina" (94'x26')

Mariners are requested to transit the area with caution, keep a sharp lookout for dive operations, and monitor channel 16.

### **MARIANA ISLANDS - GUAM - NAVTEX STATION (41/19)**

NAVTEX Station (518KHz) is Inoperable. The 518KHz NAVTEX station is inoperable with no estimated time of repair. NAVTEX broadcasts are available on 4209.5KHz Mariners.

### **MARIANA ISLANDS - GUAM - APRA OUTER HARBOR - SAFETY ZONE (23/15)**

Apra Harbor Outer Harbor Safety Zone Alpha is designated as the waters encompassed within an arc of 1000 yard radius centered at Naval Wharf Kilo located in the following coordinates:

13-26-44.5N/ 144-37-50.7E

Safety Zone Alpha applies when Wharf Kilo or a vessel moored at Wharf Kilo is displaying a red Bravo flag by day or a red light at night accompanied by a Safety Zone Alpha Sign. When Safety Zone Alpha applies entry into the zone is prohibited unless authorized by Captain of the port, Guam. Reference Safety Zone 165.1401 as marked on Apra Harbor Chart 81054.

Apra Harbor Outer Harbor Safety Zone Bravo is designated as the waters encompassed within an arc of 1400 yard radius centered at Naval Wharf Kilo located in the following coordinates:

13-26-44.5N/ 144-37-50.7E

Safety Zone Bravo applies when Wharf Kilo or a vessel moored at Wharf Kilo is displaying a red Bravo flag by day or a red light at night accompanied by a Safety Zone Bravo Sign. When Safety Zone Bravo applies entry into the zone is prohibited unless authorized by Captain of the port, Guam. Reference Safety Zone 165.1401 as marked on Apra Harbor Chart 81054.

**MARIANA ISLANDS - GUAM - APRA HARBOR SECURITY ZONE CHARLIE (01/16)**

Apra Harbor Security Zone Charlie is designated as the waters surrounding naval moorings buoy number 702, located in the following coordinates:

13-27-30N/ 144-38-13E

While a vessel is moored the security zone will extend 100 yards in all direction around the vessel and its mooring. A 50 yard security zone will remain in effect in all directions around buoy number 702 while there is no vessel moored. Entry into security zone Charlie is prohibited unless authorized by the Captain of the Port, Guam. Reference Security Zone Charlie 165.1404 as marked on Apra Harbor chart (81054). For any questions contact USCG Sector Guam at (671) 355-4910.

---

---

**SECTION II - DISCREPANCIES**

This section lists all reported and corrected discrepancies related to Aids to Navigation in this edition. A discrepancy is a change in the status of an aid to navigation that differs from what is published or charted.

---

**DISCREPANCIES (FEDERAL AIDS)**

LLNR	Aid Name	Status	Chart No.	BNM Ref.	LNM St	LNM End
28025	Pepeekeo Point Light	DAYMK DMGD	19320	295-20	47/20	
28330	Nakalele Point Light	LT EXT	19342	302-20	49/20	
28555	Kaumalapau Light	LT EXT/STRUCT DMGD	19347	015-20	03/20	
29755	Kukii Point Light	LT EXT	19383	252-20	38/20	
29850	Makahuena Point Light	LT EXT	19381	310-20	52/20	
30485	Kwajalein Harbor Channel Buoy 7	MISSING	81715		20/20	
30665	Agana Small Boat Basin Approach Range Front Light	LT EXT	81048	637-20	48/20	
30855	Tanapag Harbor Approach Lighted Buoy T	TMK MISSING	81076	544-19	40/20	
30919	Ushi Point Light	LT EXT	81067	502-19	38/20	

**DISCREPANCIES (FEDERAL AIDS) CORRECTED**

LLNR	Aid Name	Status	Chart No.	BNM Ref.	LNM St	LNM End
------	----------	--------	-----------	----------	--------	---------

None

**DISCREPANCIES (PRIVATE AIDS)**

LLNR	Aid Name	Status	Chart No.	BNM Ref.	LNM St	LNM End
28007.15	FAD Site TT - Kanewaa Point, Hawaii	MISSING	19320	122-20	19/20	
28007.22	FAD Site WH1	MISSING	19320	021-18	18/15	
28007.27	FAD Site OT - Waikoloa, Hawaii	MISSING	19327	289-20	46/20	

28007.4	FAD SITE MTBC 1	MISSING		148-19	44/19
28008.03	FAD Site NL - Nuu Landing, Maui	MISSING	19320	179-20	28/20
28008.11	FAD Site SO - Kahoolawe	MISSING	19347	213-20	34/20
28008.15	FAD Site K - Palaoa, Lanai	MISSING	19340	179-20	28/20
28008.21	FAD Site N - Cape Halawa, Molokai	MISSING	19340	179-20	28/20
28008.31	FAD Site T - Makapuu, Oahu	MISSING	19339	307-20	50/20
28008.33	FAD Site P - Penguin Bank, Oahu	MISSING	19339	254-20	39/20
28008.37	FAD Site BO - Barbers Point, Oahu	MISSING	19380	213-20	34/20
28009.05	FAD Site CO - Kaena Point, Oahu	MISSING	19380	265-20	41/20
28009.07	FAD Site II - Haleiwa, Oahu	MISSING	19004	242-20	37/20
28009.09	FAD Site J - Wailalee, Oahu	MISSING	19380	179-20	28/20
28009.13	FAD Site BB - Moloaa, Kauai	MISSING	19381	122-20	19/20
28009.15	FAD Site DK - Anahola, Kauai	ADRIFT	19004	188-20	19/20
28009.17	FAD Site WK - Wailua, Kauai	MISSING	19381	122-20	19/20
28009.19	FAD Site Z - Kipukai, Kauai	MISSING	19381	122-20	19/20
28095	Reeds Bay Rock Daybeacon B	MISSING	19324	218-18	40/18
28230	Puako Small Boat Harbor Buoy 2	MISSING	19330		10/20
28235	Puako Small Boat Harbor Buoy 3	MISSING	19330		10/20
28240	Puako Small Boat Harbor Buoy 4	MISSING	19330		10/20
28245	Puako Small Boat Harbor Buoy 5	MISSING	19330		10/20
28250	Puako Small Boat Harbor Buoy 6	MISSING	19330		10/20
28255	Puako Small Boat Harbor Buoy 7	MISSING	19330		10/20
28260	Puako Small Boat Harbor Buoy 8	MISSING	19330		10/20
28265	Puako Small Boat Harbor Buoy 9	MISSING	19330		10/20
28381.1	Kahului Boat Ramp Buoy 1	MISSING		187-20	30/20
28381.2	Kahului Boat Ramp Buoy 2	MISSING		187-20	30/20
28381.3	Kahului Boat Ramp Buoy 3	MISSING		187-20	30/20
28381.4	Kahului Boat Ramp Buoy 4	MISSING		187-20	30/20
28381.5	Kahului Boat Ramp Buoy 5	MISSING		187-20	30/20
28381.6	Kahului Boat Ramp Buoy 6	MISSING		187-20	30/20
28381.8	Kahului Boat Ramp Buoy 8	MISSING		187-20	30/20
28381.9	Kahului Boat Ramp Buoy 9	MISSING	19342	187-20	30/20
28427	Maalaea Basin Channel Lighted Buoy 1	ADRIFT	19350	158-18	22/18
28480	Lahaina Boat Basin Lighted Buoy 3	MISSING	19348	177-18	28/18
28500	Lahaina Boat Basin Lighted Buoy 7	MISSING	19348	238-18	46/18
28507.5	Mala Channel Light 5	LT EXT	19348	283-20	45/20
28507.6	Mala Channel Light 6	LT EXT	19348	284-20	45/20
28524	PacIOOS Wave Lighted Buoy Lanai	MISSING	19347	180-19	53/19
28674.04	WETS 4	MISSING	19359	010-18	02/18
28674.05	WETS 5	MISSING	19359	011-18	02/18
28885	Mokapu Point Research Lighted Buoy North	MISSING	19357	077-18	09/18
28886	Mokapu Point Research Lighted Buoy South	MISSING	19357	078-18	09/18
28895	Makai Channel Daybeacon 3	DAYMK MISSING	19358	038-19	11/19
28900	Makai Channel Daybeacon 4	MISSING	19358	038-19	11/19
28935	Maunalua Bay Daybeacon 1A	STRUCT DEST/HAZ NAV/DAYMK MISSING	19358		46/19
29115	Ala Wai Boat Harbor Channel Buoy 4	MISSING	19369	077-20	13/20
29125	Ala Wai Boat Harbor Channel Daybeacon 6	DAYMK DMGD	19369	174-18	27/18

29135	Ala Wai Boat Harbor Channel Daybeacon 8	DAYMK DMGD	19369	175-18	27/18
29315	Keehi Lagoon Barge Turning Channel Range Front	REDUCED INT	19367	312-20	52/20
29325	Keehi Lagoon Barge Turning Basin Buoy 2	OFF STA	19367	085-12	16/12
29656	West Beach Marina Light 2	LT EXT	19362	266-17	40/17
29735	PacIOOS Wave Lighted Buoy Hanalei	MISSING	19381	282-20	44/20
29903	Kikiaola Boat Harbor Light 2	LT EXT		169-18	25/18
30603	FAD Site "Cocos" - Guam	LT EXT	81048	014-19	03/19
30612	FAD Site "FACPI 2" - Guam	MISSING	81048	082-19	09/19
30624	FAD Site "Number 2" - Guam	OFF STA	81048	146-14	12/14
30631	FAD Site "Number 3"	MISSING		083-19	09/19
30634	FAD Site "Number 4"	MISSING		011-19	03/19
30637.1	FAD Site GF1	MISSING	81048	041-18	03/18
30640	FAD Site "Number 5"	LT EXT		607-18	47/18
30650	PacIOOS Wave Lighted Buoy Ritidian	MISSING	81048	537-19	49/19
30787	Drydock Point West Entrance Daybeacon 1	DAYMK MISSING	81054	707-17	44/17
30811.3	Agat Small Boat Harbor Light 3	LT EXT	81048	178-19	18/19
30811.9	Agat Small Boat Harbor Daybeacon 9	DAYMK IMCH		092-18	07/18
30815	Mamaon Channel Lighted Buoy 1	OFF STA	81048	718-17	45/17
30820	Mamaon Channel Lighted Buoy 2	OFF STA	81048	506-18	39/18
30851.2	FAD Site DD - Rota	MISSING	81063	303-19	30/19

#### DISCREPANCIES (PRIVATE AIDS) CORRECTED

LLNR	Aid Name	Status	Chart No.	BNM Ref.	LNM St	LNM End
28007.43	PacIOOS Wave Lighted Buoy Pauwela	WATCHING PROPERLY	19342	264-20	41/20	03/21

#### PLATFORM DISCREPANCIES

Name	Status	Position	BNM Ref.	LNM St	LNM End
------	--------	----------	----------	--------	---------

None

#### PLATFORM DISCREPANCIES CORRECTED

Name	Status	Position	BNM Ref.	LNM St	LNM End
------	--------	----------	----------	--------	---------

None

### SECTION III - TEMPORARY CHANGES and TEMPORARY CHANGES CORRECTED

This section contains temporary changes and corrections to Aids to Navigation for this edition. When charted aids are temporarily relocated for dredging, testing, evaluation, or marking an obstruction, a temporary correction shall be listed in Section IV giving the new position.

#### TEMPORARY CHANGES

LLNR	Aid Name	Status	Chart No.	BNM Ref.	LNM St	LNM End
28600	Kaunakakai Harbor Lighted Buoy 2	TRLB	19353		26/17	
29180	Honolulu Harbor Channel Lighted Buoy 1	RELOCATED FOR DREDGING	19367	253-20	38/20	
29195	Honolulu Harbor Channel Lighted Buoy 2	RELOCATED FOR DREDGING	19367	253-20	38/20	
29210	Honolulu Harbor Channel Lighted Buoy 5	RELOCATED FOR DREDGING	19367	253-20	38/20	

#### TEMPORARY CHANGES CORRECTED

LLNR	Aid Name	Status	Chart No.	BNM Ref.	LNM St	LNM End
------	----------	--------	-----------	----------	--------	---------

None



**PLATFORM TEMPORARY CHANGES**

Name	Status	Position	BNM Ref.	LNM St	LNM End
<b>None</b>					

**PLATFORM TEMPORARY CHANGES CORRECTED**

Name	Status	Position	BNM Ref.	LNM St	LNM End
<b>None</b>					

**SECTION IV - CHART CORRECTIONS**

**None**

**OIL RIG MOVEMENT**

**Drill Rigs/Vessels Removed**

Latitude	Longitude	Block	Rigs/Vessel	Chart	Type	Status
<b>None</b>						

**Drill Rigs/Vessels Established**

Latitude	Longitude	Block	Rigs/Vessel	Chart	Type	Status
<b>None</b>						

**SECTION V - ADVANCE NOTICES**

This section contains advance notice of approved projects, changes to aids to navigation, or upcoming temporary changes such as dredging, etc. Mariners are advised to use caution while transiting these areas.

**SUMMARY OF ADVANCED APPROVED PROJECTS**

<u>Approved Project(s)</u>	<u>Project Date</u>	<u>Ref. LNM</u>
<b>None</b>		

**Advance Notice(s)**

**MARIANA ISLANDS - GUAM - RELOCATION (18/20)**

In order to provide a more efficient and effective Aid to Navigation signal, the Coast Guard will be making the following changes after June 29, 2020: Relocate Ritidian Point Light, LLNR 30660 in approximate position 13-39-00.504N/144-51-42.678E to 13-39-00.395N/144-51-42.475E, showing FL W 6s, 9nm nominal range.

**SECTION VI - PROPOSED CHANGES**

Periodically, the Coast Guard evaluates its system of aids to navigation to determine whether the conditions for which the aids to navigation were established have changed. When changes occur, the feasibility of improving, relocating, replacing, or discontinuing aids are considered. This section contains notice(s) of non-approved, proposed projects open for comment. SPECIAL NOTE: Mariners are requested to respond in writing to the District office unless otherwise noted (see banner page for address).

**PROPOSED WATERWAY PROJECTS OPEN FOR PUBLIC COMMENT**

<u>Proposed Project(s)</u>	<u>Closing</u>	<u>Docket No.</u>	<u>Ref. LNM</u>
<b>None</b>			

**Proposed Change Notice(s)**

**MARIANA ISLANDS - GUAM - RELOCATION (24/20)**

In order to provide a more efficient and effective Aid to Navigation signal, the Coast Guard proposes the following Aid to Navigation Change at Ritidian Point: Relocate Ritidian Point Light, LLNR 30660 in approximate position 13-39-00.504N/144-51-42.678E to 13-39-00.395N/144-51-42.475E, showing FL W 6s, 9nm nominal range.

**HI ISLANDS - KAUAI - WATERWAYS ANALYSIS AND MANAGEMENT STSTEM STUDY (49/20)**

The Coast Guard is conducting a Waterways Analysis and Management System (WAMS) study of the aids to navigation as listed below and their associated approaches. The study focuses on each area's aid to navigation system, waterborne commerce, marine casualty information, port/harbor resources, emergency response plans, routine and emergency communication capabilities, and future development projects.

The following aids to navigation will be studied:

Nawiliwili Harbor Light (LLNR 29755)  
Ninini Point Lighted Buoy 2 (LLNR 29750)  
Kukii Point Light (LLRN 29755)  
Range Front Light (LLRN 29760)  
Range Rear Light (LLRN 29765)  
Breakwater Light (LLRN 29770)  
Entrance Buoy 1 (LLRN 29775)  
Buoy 2 (LLRN 29780)  
Buoy 4 (LLRN 29783)  
Buoy 5 (LLRN 29784)  
Lighted Buoy 6 (LLRN 29785)  
Lighted Buoy 7 (LLRN 29790)  
Buoy 9 (LLRN 29793)  
Buoy 11 (LLRN 29795)  
Light 1 (LLRN 29805)  
Light 2 (LLRN 29810)

Interested Mariners are strongly encouraged to comment on this proposal in writing, either personally or through their organization. All comments will be carefully considered. Any company or individual wishing to provide comments or participate in a user survey should contact:

U.S. Coast Guard Sector Honolulu  
Waterways Management  
433 Ala Moana Blvd.  
Honolulu, HI 96813  
ATTN: MST1 Beau Blacklaw  
808-541-4353  
D14-SMB-SecHono-MarineEventPermits@uscg.mil

Chart number 19383

#### **HI ISLANDS - HILO BAY - WATERWAYS ANALYSIS AND MANAGEMENT SYSTEM SURVEY (49/20)**

The Coast Guard is conducting a Waterways Analysis and Management System (WAMS) study of the aids to navigation as listed below and their associated approaches. The study focuses on each area's aid to navigation system, waterborne commerce, marine casualty information, port/harbor resources, emergency response plans, routine and emergency communication capabilities, and future development projects.

The following aids to navigation will be studied:

Entrance Lighted Buoy 1 (LLRN 28035)  
Breakwater Light (LLRN 28040)  
Coconut Point Directional Light (LLRN 28050)  
Lighted Buoy 3 (LLRN 28055)  
Range Front Light (LLRN 28060)  
Range Rear Light (LLRN 28065)  
Lighted Buoy 4 (LLRN 28070)  
Lighted Buoy 5 (LLRN 28075)  
Buoy 6 (LLRN 28080)  
Lighted Buoy 7 (LLRN 28085)  
Lighted Buoy 9 (LLRN 28105)  
Buoy 10 (LLRN 28110)  
Wailoa Basin Channel Light 1 (LLRN 28120)  
Wailoa Basin Channel Light 2 (LLRN 28125)

Interested Mariners are strongly encouraged to comment on this proposal in writing, either personally or through their organization. All comments will be carefully considered. Any company or individual wishing to provide comments or participate in a user survey should contact:

U.S. Coast Guard Sector Honolulu  
Waterways Management  
433 Ala Moana Blvd.  
Honolulu, HI 96813  
ATTN: MST1 Beau Blacklaw  
808-541-4353  
D14-SMB-SecHono-MarineEventPermits@uscg.mil

Chart number 19324

#### **HI ISLANDS - KAWAIHAE BAY - WATERWAYS ANALYSIS AND MANAGEMENT SYSTEM STUDY (49/20)**

The Coast Guard is conducting a Waterways Analysis and Management System (WAMS) study of the aids to navigation as listed below and their associated approaches. The study focuses on each area's aid to navigation system, waterborne commerce, marine casualty information, port/harbor resources, emergency response plans, routine and emergency communication capabilities, and future development projects.

The following aids to navigation will be studied:

Entrance Lighted Buoy 1 (LLRN 28275)  
Entrance Lighted Buoy 2 (LLRN 28280)

Channel Range Front Light (LLRN 28285)  
Channel Range Rear Light (LLRN 28290)  
Channel Buoy 3 (LLRN 28295)  
Channel Buoy 4 (LLRN 28300)  
Channel South Breakwater Light 6 (LLRN 28310)  
Channel Light 5 (LLRN 28315)  
South Breakwater Light 8 (LLRN 28320)

Interested Mariners are strongly encouraged to comment on this proposal in writing, either personally or through their organization. All comments will be carefully considered. Any company or individual wishing to provide comments or participate in a user survey should contact:

U.S. Coast Guard Sector Honolulu  
Waterways Management  
433 Ala Moana Blvd.  
Honolulu, HI 96813  
ATTN: MST1 Beau Blacklaw  
808-541-4353  
D14-SMB-SecHono-MarineEventPermits@uscg.mil

Chart number 19330

---

## SECTION VII - GENERAL

This section contains information of general concern to the Mariners. Mariners are advised to use caution while transiting these areas.

---

### DEPARTMENT OF HOMELAND SECURITY - REPORTS OF SUSPICIOUS ACTIVITIES (33/05)

The Department of Homeland Security (DHS) encourages the maritime public to report information concerning suspicious activity to their local Federal Bureau of Investigation (FBI) Joint Terrorism Task Force (JTTF) office, <http://www.fbi.gov/contact/fo/fo.htm>, or to other appropriate authorities. Individuals can contact the DHS watch and warning unit at (202) 323-3205, toll free at 1-888-585-9078, or by e-mail to [nipc.watch@fbi.gov](mailto:nipc.watch@fbi.gov). The U.S. Coast Guard reminds the maritime industry that they may also report information concerning suspicious activity to the National Response Center (NRC) at 1-800-424-8802.

### PUBLICATION - U.S. COAST PILOT 10 - NEW EDITION (23/20)

PUBLICATION—National Oceanic Atmospheric Administration (NOAA)— U.S. Coast Pilot 10, Pacific Coast: Oregon, Washington, Hawaii and Pacific Islands, 1st Edition, 2020, has been issued and is ready for free download and weekly updates at [www.nauticalcharts.noaa.gov/publications/coast-pilot/index.html](http://www.nauticalcharts.noaa.gov/publications/coast-pilot/index.html).

Only Print-on-Demand (POD) bound copies are available for purchase; visit [www.nauticalcharts.noaa.gov/publications/print-agents.html#coast-pilot](http://www.nauticalcharts.noaa.gov/publications/print-agents.html#coast-pilot)

The 2020 Edition cancels the preceding 2019 Edition, and incorporates all previous corrections.

### PRINTABLE DIGITAL FILES OF UP-TO-DATE NOAA NAUTICAL CHARTS (25/11)

NOAA's Office of Coast Survey provides up-to-date digital files of the NOAA nautical charts for federal agencies to use in performing the nation's business. Agencies may download the files and plot them or have them plotted under agency control. Send an e-mail from an official government address with a .gov or .mil extension to [NauticalCharts@NOAA.gov](mailto:NauticalCharts@NOAA.gov) for details. NOTE: Use of these files is limited to federal government agencies.

All other users of NOAA charting products should continue to receive them from their regular suppliers. See [www.NauticalCharts.NOAA.gov](http://www.NauticalCharts.NOAA.gov) for information.

### NOAA - RASTER NAVIGATIONAL CHARTS SERVICE RESUMES (24/08)

NOAA has resumed its full service of providing free weekly updates and new editions of RNCs via the Internet at <http://www.nauticalcharts.noaa.gov>. A list of certified RNC distributors is also available at the above Internet site. Address questions to NOAA at <http://ocsddata.ncd.noaa.gov/idrs/inquiry.aspx>.

### LOCAL NOTICE TO MARINERS - AUTOMATIC NOTIFICATION SERVICE (34/08)

The USCG publishes the Local Notice to Mariners (LNM) exclusively over the internet in order to improve service and reduce costs. The LNM can be found at <https://www.navcen.uscg.gov/?pageName=lnmMain>.

Users may now sign up to receive automatic notices via email when current information pertaining to the Local Notice to Mariners, Light List, Summary of Corrections, and other maritime related information is posted. To sign up for this automatic notification service, please visit <https://www.navcen.uscg.gov/index.php?pageName=LNMIlistRegistration>. Registration is free.

### HI ISLANDS - DGPS STATUS (33/05)

To obtain status updates of the Differential GPS broadcast sites at Upolu Point, and Kokole Point, HI, contact the Navigation Information Services Watchstander at (703) 313-5900 or via email at [email: tis-pf-nisws@uscg.mil](mailto:tis-pf-nisws@uscg.mil).

## HI ISLANDS - DGPS STATUS (33/05)

### ELECTRONIC CHART DISPLAY INFORMATION SYSTEM (ECDIS) - ERROR (18/10)

Mariners are advised that ELECTRONIC CHART DISPLAY INFORMATION SYSTEM (ECDIS) may not display some isolated shoal depths when operating in "Base or Standard Display" mode. Route planning and monitoring alarms for these shoal depths may not always be activated. To ensure safe navigation and to confirm that a planned route is clear of such dangers, mariners should visually inspect the planned route and any deviations from it using ECDIS configured to display "ALL DATA". The automated voyage planning check function should not be solely relied upon. NOAA has updated the following ENC's to resolve this issue:

US4HA51  
US5HA54  
US5HA55  
US5HA53

### PRIVATE AIDS TO NAVIGATION (01/08)

The term private aids to navigation (ATON) includes all marine aids to navigation operated in the navigable waters of the United States other than those operated by the Federal Government. Private ATON includes lighted structures and day beacons, lighted and unlighted buoys, RACONS and fog signals. Almost half of the aids to navigation established in the Fourteenth District are operated and maintained by private interests. These interests include private citizens, marina and yacht clubs, municipal and state governments, construction and dredging companies, research and non-profit organizations, beachfront associations, and large industrial concerns.

No person, public body or instrumentality not under the control of the Commandant, exclusive of the Armed Forces, shall establish and maintain, discontinue, change or transfer ownership of any aid to maritime navigation, without first obtaining permission to do so from the Commandant and the Army Corps of Engineers.

Owners contemplating establishing such buoys should review CFR 33 Part 66 and contact the appropriate authority, usually the Army Corps of Engineers, to determine what additional requirements may exist. Additionally, private aids on navigable waters regulated by the federal government require either a Coast Guard permit or Coast Guard letter of no objection. The application for a letter of no objection or for a permit, form CG-2554, can be obtained by writing or faxing the Private ATON Manager at the address and phone number given below, or via the website at <http://www.uscg.mil/d14/cmd/dp/dpw/>.

The Private ATON Manager provides applicants assistance in processing their paperwork. Federal regulations governing aids to navigation, copies of permits previously issued to the applicant, illustrations of standard markings, and lists of commercial ATON manufacturers are available. Questions and requests should be directed to:

Commander (dpw)  
Fourteenth Coast Guard District  
300 Ala Moana Boulevard, 9-216  
Honolulu, HI 96850-4982  
Attn: Private ATON Manager  
Tel: (808) 535-3408  
Fax: (808) 535-3404

U.S. Army Corps of Engineers  
Honolulu District  
Building 230  
Ft. Shafter, HI 96858-5440  
Attn: CEPOH-EC-R  
Phone: (808)-835-4004

Mariners are reminded that they have a responsibility to report discrepant private aids to the nearest Coast Guard unit. The failure of a mariner to report a discrepant aid to navigation may result in casualties to others. All aids to navigation in the Fourteenth District, both private and federally maintained, are user monitored. When owners receive discrepancy reports from the Coast Guard, they are obligated to take immediate action to correct the discrepancy. Owners are reminded of their responsibility for the proper operation and maintenance of their private aids to navigation. All classes of private aids to navigation shall be maintained in proper operating condition. They are subject to inspection by the Coast Guard at any time and without prior notice. The Coast Guard issues broadcast notice to mariners for reported discrepancies that remain in effect until the discrepancy is corrected or is published in the Local Notice to Mariners.

### FISH AGGREGATING DEVICE (FAD) BUOY INFORMATION AND DISCREPANCIES (33/05)

The State of Hawaii has placed Fish Aggregating Devices (FADs) in the waters surrounding the main Hawaiian Islands. These buoys attract schools of tuna and other important pelagic fishes, such as dolphinfish (Mahimahi), wahoo (Ono) and billfish. FADs allow fishermen to easily locate and catch these species. The buoys are anchored using approximately 2.5 miles of mooring line which creates a very large swing circle. Mariners are advised that these buoys may maneuver anywhere from three to five miles from their charted positions.

Mariners requesting up to date information concerning Hawaiian Island's FAD Buoys, or reports of discrepancies, may either visit the Hawaii FAD web site at <http://www.himb.hawaii.edu/fads>, contact Mr. Warren Cortez at (808) 956-0684, or send written correspondence to:  
Mr. Warren Cortez  
Fish Aggregating Devices Program  
965 N. Nimitz Hwy  
Honolulu, HI 96817

Mariners requesting up to date information concerning Guam's FAD Buoys, or reports of discrepancies, may either visit the Guam FAD web site at [www.dawr.guam.gov](http://www.dawr.guam.gov), contact Mr. Brent Tibbatts at [Brent.Tibbatts@gmail.com](mailto:Brent.Tibbatts@gmail.com) 671.735.3955/56, or send written correspondence to:

## **FISH AGGREGATING DEVICE (FAD) BUOY INFORMATION AND DISCREPANCIES (33/05)**

Mr. Brent Tibbatts  
Guam Department of Agriculture  
Division of Aquatics and Wildlife Resources  
163 Dairy Road  
Mangilao, Guam 96913

## **NAVIGATION INTERNET SITES (33/05)**

Chart Corrections: <http://nauticalcharts.noaa.gov/mcd/updates/index.htm>  
Light List Corrections: <https://www.navcen.uscg.gov/index.php?pageName=lightLists>  
Coast Pilot Corrections: <http://nauticalcharts.noaa.gov/nsd/cpdownload.htm>  
NOAA Weather Buoy Sites: <http://www.ndbc.noaa.gov/Maps/rmd.shtml>  
Hawaii Weather: <http://www.prh.noaa.gov/pr/hnl/>  
Online Chart Viewer: <http://www.nauticalcharts.noaa.gov/mcd/OnLineViewer>

(For NOAA Print-on-Demand (POD) charts only)

NOAA and Coast Survey, in partnership with OceanGrafix, LLC, offer mariners official nautical charts that are continuously updated by NOAA cartographers up to the latest Notice to Mariners and to all Critical Safety Information known to the Coast Survey in advance of its publication in a Notice. From NOAA digital files, OceanGrafix prints corrected charts, to order, for sale to mariners through the OceanGrafix retail network. Produced and distributed by authority of NOAA, these charts meet all U.S. Coast Guard chart carriage requirements, including the requirements for updating (Titles 33 & 46 CFR). New Editions are available 2-8 weeks before their release as a traditional NOAA chart.

These new charts feature operational information for the commercial mariner, and education and safety information for the recreational boater. They have brighter colors and a higher contrast for better readability in various light conditions. They come either laminated or on water resistant paper.

POD charts are available through a POD chart agents at <http://OceanGrafix.com/>, 1-877-56CHART, or contact NOAA at <http://nauticalcharts.noaa.gov/pod/Pod.htm>. For questions contact NOAA at [help@nauticalcharts.gov](mailto:help@nauticalcharts.gov).

## **QUARTERLY UPDATES TO THE NOAA TIDE PREDICTIONS SERVICE (28/12)**

NOAA, National Ocean Service's and Center for Operational Oceanographic Products and Services (CO-OPS) provides electronic tide predictions for more than 3000 locations around the United States, Caribbean and the Pacific Islands as part of the NOAA Tide Predictions service of the CO-OPS Tides & Currents website.

<http://tidesandcurrents.noaa.gov>

NOAA Tide Predictions service uses the most up-to-date information available in order to provide accurate tide predictions. Updates to the predictions provided by NOAA Tide Predictions service, based on newly obtained or analyzed data, are released quarterly.

Previous quarterly updates, are available through the NOAA Tide Predictions service of the CO-OPS Tide & Currents website. For additional information, please contact CO-OPS via e-mail at [Tide.Predictions@noaa.gov](mailto:Tide.Predictions@noaa.gov) or (301)713-2815.

## **HI ISLANDS - U.S. DEPARTMENT OF HOMELAND SECURITY - DIVER SAFETY ADVISORY (25/09)**

This advisory is issued to increase the safety of all open water and waterway users throughout the Hawaiian Islands and is issued in conjunction with the Department of Land and natural Resources (DLNR) pilot program focusing on diver safety.

Over the years there have been an increased number of reports of near misses between divers and waterborne crafts in Oahu, Maui and Hawaii. In most cases, these near misses have happened in near coastal waters and often when conditions were choppy.

The following suggested measures can help avoid near misses:  
Become familiar with your transit route and destination area before heading out.  
Remain vigilant of your surroundings and post extra lookouts in choppy waters and inclement weather.  
Stay clear of federal Aids to Navigation and commercial delineated channels.  
Use all appropriate sound and visual signals.  
Postpone trips until the weather and sea conditions improve.

All open water and waterway users are also highly encouraged to visit the Coast Guard Sector Honolulu Homeport website for Safety and Security Zone information for the Hawaiian Islands at: <http://homeport.uscg.mil/> under the Honolulu Port Directory tab and Safety and Security section.

The most updated charts for the Hawaiian Islands can be found on the National Oceanic and Atmospheric Administration (NOAA) website: <http://www.prh.noaa.gov/pr/hnl/> or <http://www.nauticalcharts.noaa.gov/mcd/OnLineViewer.html>.

Any and all life threatening or hazardous conditions including off station or missing buoys should be reported immediately to the U.S. Coast Guard at (808) 842-2600.

## **PACIFIC OCEAN - NATIONAL WILDLIFE REFUGE - RESTRICTED FOR ENTRY (22/11)**

The U.S. Department of the Interior, Fish and Wildlife Service, National Wildlife Refuge System, Pacific Reefs National Wildlife Refuge Complex manages ten National Wildlife Refuges within the Fourteenth Coast Guard District. Eight of these Refuges, described below, consist of waters and submerged and emergent lands. The remaining two Refuges, the Marianas Arc of Fire and the Mariana Trench National Wildlife Refuges, consist

**PACIFIC OCEAN - NATIONAL WILDLIFE REFUGE - RESTRICTED FOR ENTRY (22/11)**

only of submerged lands.

The waters and submerged and emergent lands of National Wildlife Refuges are subject to the regulations governing the National Wildlife Refuge System found in Parts 25-32 of Title 50, Code of Federal Regulations. Therefore, except as provided by international law, these areas are closed to all forms of entry, other than innocent passage, unless specifically authorized by a Special Use Permit issued by the U.S. Fish and Wildlife Service. Should you have any questions, please contact the Pacific Reefs National Wildlife Refuge Complex by emailing the Project Leader at Pacific\_Reefs@fws.gov or by calling 808-792-9560.

Baker Island National Wildlife Refuge. This Refuge includes all of Baker Island approximately at Latitude 0-11-45 North and Longitude 176-28-45 West, together with its territorial waters extending outward 12 nautical miles (13.8 mi; 22.2 km) from the mean low water line of the island.

Howland Island National Wildlife Refuge. This Refuge includes all of Howland Island approximately at Latitude 0-48-30 North and Longitude 176-37 West, together with its territorial waters extending outward 12 nautical miles (13.8 mi; 22.2 km) from the mean low water line of the island.

Jarvis Island National Wildlife Refuge. This Refuge includes all of Jarvis Island approximately at Latitude 0-22-20 South and Longitude 160-00 West, together with its territorial waters extending outward 12 nautical miles (13.8 mi; 22.2 km) from the mean low water line of the island.

Johnston Atoll National Wildlife Refuge. This Refuge includes all of Johnston Atoll approximately at Latitude 16-44 North and Longitude 169-31 West, together with its territorial waters extending outward 12 nautical miles (13.8 mi; 22.2 km) from the mean low water line of the atoll. However, portions of the emergent land at Johnston Atoll are currently under the administrative jurisdiction of the Department of the Air Force, which controls all access to areas under its administrative jurisdiction.

Kingman Reef National Wildlife Refuge. This Refuge includes all of Kingman Reef approximately at Latitude 6-24-30 North and Longitude 162-23-30 West, together with its territorial waters extending outward 12 nautical miles (13.8 mi; 22.2 km) from the mean low water line of the reef.

Palmyra Atoll National Wildlife Refuge. This Refuge includes all of Palmyra Atoll approximately at Latitude 05-53 North and Longitude 162-05 West, together with its territorial waters extending outward 12 nautical miles (13.8 mi; 22.2 km) from the mean low water line of the atoll. However, portions of the emergent land at Palmyra Atoll are currently owned and managed as a nature preserve by The Nature Conservancy, which controls all access to areas under its ownership.

**PACIFIC OCEAN - NATIONAL WILDLIFE REFUGE - RESTRICTED FOR ENTRY CONTINUED (22/11)**

Rose Atoll National Wildlife Refuge. This Refuge includes all of Rose Atoll approximately at Latitude 14-32-45 South and Longitude 168-9-24 West, the seaward extent being the extreme low water line outside the perimeter reef except at the entrance channel where the boundary is a line extended between the extreme low water lines on each side of the entrance channel.

Wake Atoll National Wildlife Refuge. This Refuge includes all of Wake Atoll approximately at Latitude 19-18 North and Longitude 166-38 East, together with its territorial waters extending outward 12 nautical miles (13.8 mi; 22.2 km) from the mean low water line of the atoll. However, in accordance with Presidential Proclamation No. 8336, the emergent land at Wake Atoll is currently under the management of the Department of the Air Force, which controls all access to areas under its management.

**HI ISLANDS - KAHO'OLAWE ISLAND RESERVE COMMISSION - NOTICE OF OPEN WATERS SCHEDULE (01/20)**

Notice to Trollers: The dates below mark the Open Waters Trolling Schedule for January 2020 through December 2020. Should you have any questions, please contact the Ocean Resources Program at the Kaho'olawe Island Reserve Commission (KIRC) by emailing the Ocean Resources Specialist at dtokishi@kirc.hawaii.gov or by calling 808-243-5022. This information is also posted on the KIRC website at <http://kahoolawe.hawaii.gov>.

12:01 a.m Saturdays to 11:59 p.m. Sundays as follows:

- January 18 -19; 25 - 26
- February 08 -09; 22 - 23
- March 14 -15; 21 - 22
- April 04 -05; 18 - 19
- May 02 -03; 16 - 17
- June 06 -07; 20 - 21
- July 11 -12; 25 - 26
- August 08 -09; 15 - 16
- September 12 -13; 26 - 27
- October 10 -11; 24 - 25
- November 07 -08; 21 - 22
- December 05 -06; 19 - 20

The Kaho'olawe Island Reserve (defined as the submerged lands and waters within two nautical miles of the island) is divided into two zones; Zones A and B. These zones are defined as:

Zone A: Includes the island of Kaho'olawe and all the submerged lands and waters between the shoreline of Kaho'olawe and the 30-fathom isobath surrounding Kaho'olawe (HAR 13-261). Unauthorized entry into Zone A is prohibited at all times except in case of emergency.  
Zone B: All waters and submerged lands between the 30-fathom isobath surrounding Kaho'olawe and two nautical miles from the shoreline of the island. Unauthorized entry into Zone B is prohibited at all times except for trolling as authorized by KIRC on the days stipulated by the Open Waters Schedule as listed above or in case of emergency. Trollers must remain underway, making way at all times while in Zone B. All lures or live bait must remain on the water surface. All other fishing, ocean recreation, and any other activities are strictly prohibited. All vessels fishing in the Kaho'olawe Island Reserve during the open trolling weekends are required by state law (H.A.R. 13-261) to register and submit catch reports to the KIRC. KIRC will be implementing its new registration and catch report system beginning January 2007. For more information on how to register and where to submit your catch reports, call 808-243-5889.

Warning: Kaho'olawe and its surrounding submerged lands and waters contain unknown quantities of unexploded ordnance that are hazardous to

**HI ISLANDS - KAHŌ'OLAWĒ ISLAND RESERVE COMMISSION - NOTICE OF OPEN WATERS SCHEDULE (01/20)**

public health and safety.  
Authority: (H.R.S. §6K, H.A.R. §13-261).

**HI ISLANDS - OAHU - KANEŌHE BAY - MILITARY OPERATIONS (09/09)**

Military amphibious and search and rescue operations may be underway at any time, day or night, within Kaneohe Bay in the vicinity of 21-26-06.83N/157-46-11.00W and 21-26-45.00N/157-46-55.00W (approximately .5 NM south of Mokapu Peninsula). Support surface craft will be equipped with appropriate day/night signals and markings and can be reached on VHF-Ch 82. In the interest of safety, it is requested that all vessels that use Sonar contact Water Front Operations on VHF-Ch 82A or by phone at (808) 257-2941 to avoid injury to divers that may be in the area.

**HI ISLANDS - SOUTH COAST OAHU - HAZARDOUS OPERATIONS - HOT AREAS (50/07)**

FACSFAC Pearl Harbor established Special Operating Areas Four (SOA-4) as a permanent "HOT AREA" named "KAPU" on April 15, 1995. FACSFAC effective hours are 0700W to 2300W (Monday - Saturday from 1700Z - 0900Z) Monday - Friday, and on weekend's 0800W - 1600W (Weekends from 1800Z - 0200Z) or by request. Activities include intermittent naval gunnery exercises and airborne ordnance drops. "KAPU" is also designated as the emergency jettison area for aircraft with hung stores, etc. Hot area "KAPU" is bounded by the following coordinates 20-46N/158-16W, 20-42 N/158-04W, 20-13N/158-36W and 20-04N/158-11W. Scheduling authority is FACSFAC Pearl Harbor call-sign "HULA DANCER". "HULA DANCER" can be reached on primary 266.4/127.0 MHz, or secondary 336.8/132.4 MHz or telephone (808) 472-7333/7337 and may authorize transits through these areas on a case by-case basis.

**HI ISLANDS - OAHU - KANEŌHE BAY - ULUPAU CRATER WEAPONS DANGER ZONE - HAZARDOUS OPERATIONS (18/07)**

The Ulupau Crater Weapons Training Range Danger Zone encompasses a sector extending seaward for 3.8 nautical miles between radial lines bearing 001 and 129 degrees true, from a point on Mokapu Peninsula at 21-27-10N/ 157-43-45W. Whenever live firing is scheduled and in progress during daylight hours, two large red triangular warning pennants will be flown on the shore at Ulupau Crater. Whenever any weapons firing is scheduled and in progress during periods of darkness, flashing red warning beacons will be displayed on the shore at Ulupau Crater. Boaters will have complete access to the Danger Zone whenever weapons firing is not scheduled, which will be indicated by the absence of any warning flags, pennants, or beacons displayed ashore. The danger zone is considered unsafe for mariners whenever live firing is in progress; in such cases boaters shall vacate the zone at best speed and by the most direct route. However, vessels are permitted to expeditiously pass through the danger zone when live firing is in progress; all firing would be temporarily suspended until the vessel has cleared the zone. Additional information may be obtained by calling the MCBH Range Manager (AC/S G-3) at (808) 257-8816/17.

The following are hazardous operations to mariners for January 20, 2021 through January 26, 2021:

Zone 1 (NE Range)  
Jan 20 N/A  
Jan 21 0900W - 1200W  
Jan 22 0800W - 1700W  
Jan 23 N/A  
Jan 24 N/A  
Jan 25 N/A  
Jan 26 N/A

Zone 2 (E Range)  
Jan 20 0700W - 1800W  
Jan 21 0700W - 1800W  
Jan 22 N/A  
Jan 23 N/A  
Jan 24 N/A  
Jan 25 0800W - 1700W  
Jan 26 0800W - 1700W

See enclosure 1

**HI ISLANDS - OAHU - KEAHI POINT - HAZARDOUS OPERATIONS (18/07)**

The Puuloa Danger Zone is located in ocean waters as described by the below coordinates and is closed at all times to surface craft, swimmers, and divers, with the exception of authorized personnel.

Additional information may be obtained by contacting Daniel Geltmacher at daniel.geltmacher@usmc.mil.

The Danger Zone is bounded by the following coordinates:

21-18-21N/ 157-59-14W  
21-18-11N/ 158-00-17W  
21-17-11N/ 158-00-06W  
21-17-22N/ 157-59-03W

The following are hazardous operations to mariners for January 20, 2021 through January 26, 2021:

Jan 20 N/A  
Jan 21 0730W - 1500W  
Jan 22 N/A  
Jan 23 0800W - 1400W  
Jan 24 0800W - 1400W

**HI ISLANDS - OAHU - KEAHI POINT - HAZARDOUS OPERATIONS (18/07)**

Jan 25 0700W - 1700W  
Jan 26 0700W - 1700W

**HI ISLANDS - KAUAI - BARKING SANDS - PACIFIC MISSILE RANGE FACILITY HI AREA - HAZARDOUS OPERATIONS (06/13)**

Intermittent missile firing operations are conducted by the Pacific Missile Range Facility (PMRF), Barking Sands, Kauai, in the Whiskey 188 (W-188) operating area. Operations are conducted periodically throughout each week in an area bound by the following coordinates:

22:00N/159:51W, 22:00N/160:00W, 22:04N/160:06W, 21:59.5N/160:21W, 22:05N/161:35W, 22:45N/161:25W, 22:56N/161:49W, 23:34N/161:18.6W, 23:57N/160:41W, 25:41N/161:36W, 26:00N/159:58W, 25:47N/158:15W, 23:54N/158:15W, 22:20N/159:09W, 22:21N/159:30W, 22:13N/159:42W, 22:00N/159:51W

Intermittent high power radar operations are conducted by PMRF at the following position: 22:03N/159:47W

Request all mariners remain at least one mile off the coastline between Kokole Point and Nohili Point.

Vessels may be requested to alter course due to firing operations and are requested to contact "Pacific Missile Range Facility" on HF 2182 KHz or VHF-Ch 16 prior to entering the above boundaries. If unable to contact the PMRF prior to entering or while in the warning area, relay messages through U.S. Coast Guard Honolulu. Vessels inbound and outbound for Hawaiian ports will create the least interference to firing operations as well as enhance vessel's safety by passing South of the Islands of Kauai and Niihau during the specified times. Federal law provides for civil penalties of \$40,000 and/or criminal penalties of 6 years in prison for each violation of the PMRF safety zone during the schedule of designated activity (33CFR 165.1406).

The following are hazardous operations to mariners for January 20, 2021 through January 27, 2021:

- Jan 20 0930W - 1500W Kaulakahi Channel and Nohili Point to 25 NM West through North.
- Jan 21 No hazardous operations scheduled.
- Jan 22 1030W - 1600W Kaulakahi Channel and Nohili Point to 25 NM West through North.
- Jan 23 No hazardous operations scheduled.
- Jan 24 No hazardous operations scheduled.
- Jan 25 0630W - 1830W Kaulakahi Channel and Nohili Point to 60 NM West through North.
- Jan 26 0700W - 1700W Kaulakahi Channel and Nohili Point to 25 NM West through North.
- Jan 27 0700W - 1700W Kaulakahi Channel and Nohili Point to 25 NM West through North.

**MARINE EVENTS**

This section contains information of general concern to the mariner. All event forms must be received no later than noon on Tuesday a week prior to the event. Mariners are advised to use caution while transiting these areas:

**HI ISLANDS - OAHU - TRAINING (01/21)**

Iwaterman LLC will be conducting periodic MRB, Risk Technician Training with 15 watercraft and 30 participants in ocean waters off of Oahu from January 1, 2021 through March 31, 2021 from 0001W - 2300W.

---

---

**SECTION VIII - LIGHT LIST CORRECTIONS**

An Asterisk \*, indicates the column in which a correction has been made to new information

(1) No.	(2) Name and Location	(3) Position	(4) Characteristic	(5) Height	(6) Range	(7) Structure	(8) Remarks
<b>None</b>							

---

---

**PUBLICATION CORRECTIONS**

**None**

---

---

**ENCLOSURES**

**HI ISLANDS - OAHU - KANEOHE BAY HAZARDOUS OPERATIONS (18/07)**

ULUPAU CRATER WEAPONS DANGER ZONE

**HI ISLANDS - OAHU - HONOLULU HARBOR DREDGE (03/21)**

USACE HONOLULU HARBOR DREDGE PROJECT



---

M. Sibley  
Rear Admiral, U.S. Coast Guard  
Commander, Fourteenth Coast Guard District

## Danger Zone - Hawaii-Ulupau Crater Weapons Training (Kaneohe Bay)

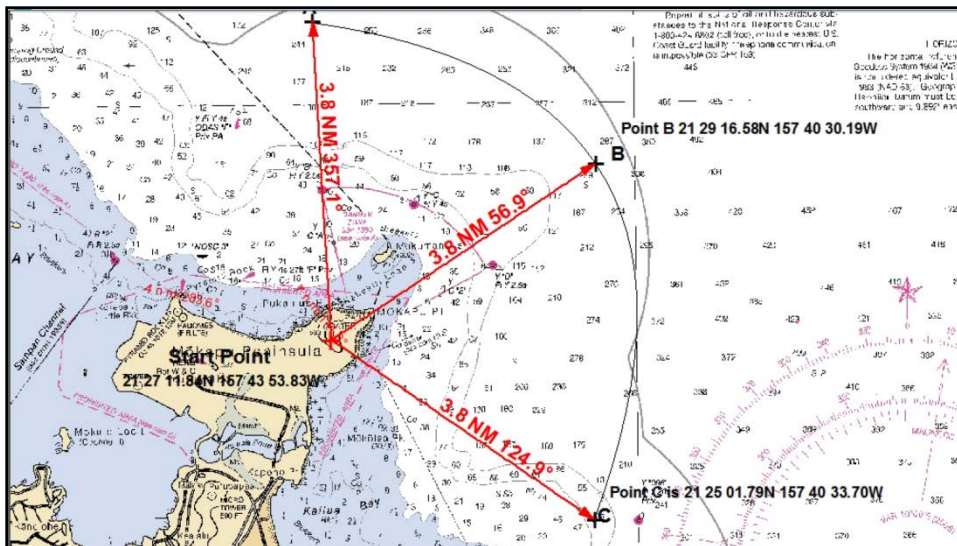
Mariners are reminded that the Marine Corps Base Hawaii (MCBH) conducts intermittent weapons firing at the Ulupau Crater Weapons Training Range between 6 a.m. and 11 p.m. throughout the week & weekends. Caution transiting the waters off of Mokapu Peninsula is imperative at all times, including the 500 yard prohibited area surrounding MCBH. Periods of live firing will be indicated on shore at Ulupau crater either by two large red triangular warning pennants during the day or flashing red warning beacons at night. When these signals are present, the danger zone is not considered safe for boaters. Information on weapons firing schedules may be obtained by calling the MCBH Range Manager at 808-257-8816/17.

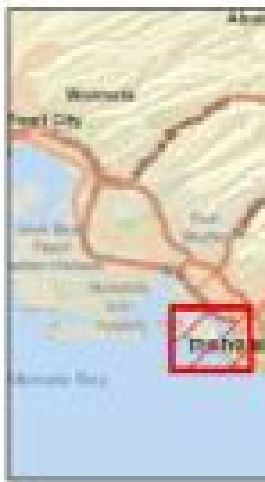
The 33 CFR 334.1380 Army Corp of Engineers established Danger Zone includes the area within a pie-shaped sector extending seaward a distance of 3.8 nautical miles between radial lines bearing  $357.1^\circ$  true and  $124.9^\circ$  true, respectively, from a starting point on Mokapu Peninsula at  $21^\circ 27' 11.84''$  N,  $157^\circ 43' 53.83''$  W. The danger zone is bounded by a landward starting point and three seaward points forming an arc with a 3.8 nautical-mile radius at its center (Point B) with a radial line bearing  $56.9^\circ$  true. The three seaward points have the following coordinates:

Point A: Latitude  $21^\circ 30' 59.66''$  N, Longitude  $157^\circ 44' 05.97''$  W

Point B: Latitude  $21^\circ 29' 16.58''$  N, Longitude  $157^\circ 40' 30.19''$  W

Point C: Latitude  $21^\circ 25' 01.79''$  N, Longitude  $157^\circ 40' 33.70''$  W





**Legend**

Federal Channel

**01A** Pier Number

**Firefight Areas**

- U2
- U3a
- U3b
- U4
- U5
- U6
- U7

0 400 800

SITE PLAN

HONOLULU HARBOR