



U.S. Department  
of Homeland Security  
**United States  
Coast Guard**

## LOCAL NOTICE TO MARINERS

**District: 13**

**Week: 34/21**

ISSUED BY: COMMANDER, THIRTEENTH COAST GUARD DISTRICT (dpw)  
915 Second Avenue, 35th Floor, Rm 3510, Seattle, Washington 98174-1067  
Telephone: (206) 220-7280  
Email: D13-SMB-D13-LNM@uscg.mil  
<https://www.pacificarea.uscg.mil/Our-Organization/District-13/District-Staff/-dpw/>  
<https://www.navcen.uscg.gov/?pageName=lnmDistrict&region=13>

COMDTPUB P16502.6, Light List Volume VI, 2021 Edition, and Coast Pilot Volume 10, 2021 Edition.  
Light List Volume VI, 2021 Edition is available at [https://www.navcen.uscg.gov/pdf/lightLists/LightList\\_V6\\_2021.pdf](https://www.navcen.uscg.gov/pdf/lightLists/LightList_V6_2021.pdf)  
Coast Pilots, along with corrections, are available at: [www.nauticalcharts.noaa.gov/publications/coast-pilot/index.html](http://www.nauticalcharts.noaa.gov/publications/coast-pilot/index.html). Print on Demand (POD) copies are available for purchase at: [www.nauticalcharts.noaa.gov/publications/print-agents.html#coast-pilot](http://www.nauticalcharts.noaa.gov/publications/print-agents.html#coast-pilot).

### UNITED STATES COAST GUARD NAVIGATION INFORMATION SERVICE (NIS)

The United States Coast Guard Navigation Information Service (NIS), operated by the USCG Navigation Center, is staffed 24 hours a day, 7 days a week. The NIS provides information on the current operational status, effective policies, and general information for GPS and DGPS. The NIS also disseminates Safety Broadcasts / Broadcast Notice to Mariners (BNM), Local Notice to Mariners (LNM), and the latest Notice Advisory to Navstar Users (NANU). LNM's and other navigation notices can be obtained via e-mail subscription through the USCG Navigation Center website:

<https://www.navcen.uscg.gov/?pageName=feeds>

In addition, the NIS investigates all reports of degradation or loss of GPS or DGPS service. Mariners are encouraged to report all degradation of radio navigation services to the NIS via any of the following: Phone: (703) 313-5900 or Email: [webmaster@navcen.uscg.mil](mailto:webmaster@navcen.uscg.mil), or on the World Wide Web: <https://www.navcen.uscg.gov/?pageName=gpsUserInput>

### BROADCAST NOTICE TO MARINERS

Urgent marine navigational and weather information is broadcast over VHF channel 22A (157.1 MHz). Broadcasts are first announced over the distress, safety and calling channel 16 before they are made. All ships in U.S. waters over 20 meters in length are required to monitor VHF channel 16, and must have radios capable of tuning to the VHF simplex channel 22A. Additionally, District 13 BNM's are now available online. To view or download District 13 BNM's visit <https://www.navcen.uscg.gov/bnm/messages/DistrictSearchV1.php?d=13&i=3>

This section contains a range of all the significant Broadcast Notice to Mariners (BNM's) on the date of this edition.

|                                  |                              |                           |
|----------------------------------|------------------------------|---------------------------|
| Originating Unit<br>CGD THIRTEEN | Beginning BNM<br>D13-0555-21 | Ending BNM<br>D13-0568-21 |
|----------------------------------|------------------------------|---------------------------|

## ABBREVIATIONS

### A through H

ADRIFT - Buoy Adrift  
AICW - Atlantic Intracoastal Waterway  
AI - Alternating  
B - Buoy  
BKW - Breakwater  
bl - Blast  
BNM - Broadcast Notice to Mariner  
bu - Blue  
C - Canadian  
CHAN - Channel  
CGD - Coast Guard District  
C/O - Cut Off  
CONT - Contour  
CRK - Creek  
CONST - Construction  
DAYMK/Daymk - Daymark  
DBN/Dbn - Daybeacon  
DBD/DAYBD - Dayboard  
DEFAC - Defaced  
DEST - Destroyed  
DISCON - Discontinued  
DMGD/DAMGD - Damaged  
ec - eclipse  
EST - Established Aid

### I through O

I - Interrupted  
ICW - Intracoastal Waterway  
IMCH - Improper Characteristic  
INL - Inlet  
INOP - Not Operating  
INT - Intensity  
ISL - Islet  
Iso - Isophase  
kHz - Kilohertz  
LAT - Latitude  
LB - Lighted Buoy  
LBB - Lighted Bell Buoy  
LHB - Lighted Horn Buoy  
LGB - Lighted Gong Buoy  
LONG - Longitude  
LNM - Local Notice to Mariners  
LT - Light  
LT CONT - Light Continuous  
LTR - Letter  
LWB - Lighted Whistle Buoy  
LWP - Left Watching Properly  
MHz - Megahertz  
MISS/MSNG - Missing  
Mo - Morse Code

### P through Z

PRIV - Private Aid  
Q - Quick  
R - Red  
RACON - Radar Transponder Beacon  
Ra ref - Radar reflector  
RBN - Radio Beacon  
REBUILT - Aid Rebuilt  
RECOVERED - Aid Recovered  
RED - Red Buoy  
REFL - Reflective  
RRL - Range Rear Light  
RELIGHTED - Aid Relit  
RELOC - Relocated  
RESET ON STATION - Aid Reset on Station  
RFL - Range Front Light  
RIV - River  
RRASS - Remote Radio Activated Sound Signal  
s - seconds  
SEC - Section  
SHL - Shoaling  
si - silent  
SIG - Signal  
SND - Sound  
SPM - Single Point Mooring Buoy

ev - every  
EVAL - Evaluation  
EXT - Extinguished  
F - Fixed  
fl - flash  
Fl - Flashing  
G - Green  
GIWW - Gulf Intracoastal Waterway  
HAZ - Hazard to Navigation  
HBR - Harbor  
HOR - Horizontal Clearance  
HT - Height

MRASS - Marine Radio Activated Sound Signal  
MSLD - Misleading  
N/C - Not Charted  
NGA - National Geospatial-Intelligence Agency  
NO/NUM - Number  
NOS - National Ocean Service  
NW - Notice Writer  
OBSCU - Obscured  
OBST - Obstruction  
OBSTR - Obstruction  
Oc - Occulting  
ODAS - Anchored Oceanographic Data Buoy

SS - Sound Signal  
STA - Station  
STRUCT - Structure  
St M - Statute Mile  
TEMP - Temporary Aid Change  
TMK - Topmark  
TRLB - Temporarily Replaced by Lighted Buoy  
TRLT - Temporarily Replaced by Light  
TRUB - Temporarily Replaced by Unlighted Buoy  
USACE - Army Corps of Engineers  
W - White  
Y - Yellow

**Additional Abbreviations Specific to this LNM Edition:**

AtoN - Aids to Navigation  
COTP - Captain of the Port  
CPA - Closest Point of Approach  
LLNR - Light List Number

NAVCEN - U.S. Coast Guard Navigation Center  
NM - Nautical Miles  
ODOT - Oregon Department of Transportation  
RM - River Mile Marker

S-AIS - Synthetic AIS  
VTS - Vessel Traffic Service  
WSDOT - Washington State Department of Transportation  
TSS - Traffic Separation Scheme

---

---

**SECTION I - SPECIAL NOTICES**

This section contains information of special concern to the Mariner.

---

**OREGON – YAQUINA HEAD TO COLUMBIA RIVER – CAPE KIWANDA – Inshore survey operations (Revised from LNM 31/21)**

SUBCOM will be conducting marine survey work just off the Oregon coast between Sand Lake and Cape Kiwanda on approximately 09 - 15 Sep 2021, dependent upon the weather. Operations are expected to occur within 6 NM of the shore, between approximate positions 45-16-04.182 N / 124-04-31.914 W, and 45-15-07.614 N / 123 -59-00.354 W. C/S Decisive, call sign V7DI7, can be hailed on VHF-FM channel 16, and she will be restricted in her ability to maneuver during these operations. All vessel traffic are requested to maintain at least a 1 NM closest point of approach (CPA). For more information on this operation, contact Ruben Garcia Oliver at [rgoliver@subcom.com](mailto:rgoliver@subcom.com).

Chart 18520

LNM: 34/21

**WASHINGTON – PUGET SOUND – APPLE COVE TO POINT KEYPORT – Temporary lighted buoy deployed**

NOAA's Pacific Marine Environmental Laboratory deployed a temporary research lighted buoy on 19 Aug 2021 approximately 1 NM northeast of Meadow Point in approximate position 47-42-31.02 N, 122-23-47.58 W. The buoy is yellow and grey, round and marked with a flashing yellow four seconds (FL Y 4s) light. For more information contact Cabot Zucker at (561) 972-0930 or email at [cabot.zucker@noaa.gov](mailto:cabot.zucker@noaa.gov).

Charts: 18446 18473

LNM: 34/21

**WASHINGTON – PUGET SOUND – ELLIOT BAY – DUWAMISH WATERWAY – Dredging and marine construction**

Orion Marine will be performing dredging and marine construction in the vicinity of vigor Shipyards on the Duwamish River west waterway from 01 Sep 2021 through 28 Feb 2022. Work will typically take place from 0600 to 1730, Monday thru Saturday. The DB Petaluma and DB Miller will be onsite, with several material barges, and towing provided by Boyer Towing. Each floating plant will have all corners marked with steady white lights. Mariners transiting the west waterway are requested to minimize their wake and maintain at least 200 feet from operations. For additional information please contact Bradley Morlock at (253) 552-1154 or email at [bmorlock@orionmarinegroup.com](mailto:bmorlock@orionmarinegroup.com).

Chart 18450

LNM: 34/21

**WASHINGTON – SOUTHERN PUGET SOUND – GPS testing**

US Strategic Command has proposed GPS testing encompassing the southern Puget Sound area. The center point of the test will be at position 47-02-02.6 N, 122-30-40.4 W with a radius of 115 NM. The GPS navigation signal may be unreliable due to testing on GPS frequencies used by shipboard navigation and handheld systems. Systems that rely on GPS, such as e-911, AIS and DSC, may be affected. The testing frequencies will be GPS L1 and L2. Testing dates and times are as listed below, using Pacific Standard Time as local time:

1000 – 1600 on 14 Oct 21;  
1800 on 14 Oct 21 – 0800 on 15 Oct 21;  
1800 on 15 Oct 21 – 0800 on 16 Oct 21;  
1800 on 16 Oct 21 – 0800 on 17 Oct 21.

For additional information or to express concerns, contact the Coast Guard Navigation Center at (703) 313-5900 or at <https://www.navcen.uscg.gov/?pageName=dgpsSiteInfo&currentOutages>.

Chart 18448

LNM: 34/21

**OREGON – WASHINGTON – Pacific Coast Port Access Route Study**

The Coast Guard is conducting a Port Access Route Study on the Pacific coast (PAC-PARS) to evaluate safe access routes for the movement of vessel traffic proceeding to or from ports or places along the western seaboard of the United States to determine whether a Shipping Safety Fairway and/or routing measures should be established or modified. The goal of the PAC-PARS is to enhance navigational safety by examining existing shipping routes and waterway uses, and, to the extent practicable, reconciling the paramount right of navigation within designated port access routes with other waterway uses such as offshore renewable energy, commercial space ports/re-entry sites, and marine sanctuaries. See Enclosure (4) of this LNM for additional information. You may submit comments identified by docket number USCG-2021-0345 using the Federal eRulemaking webpage <https://www.regulations.gov>. Comments and related material must be received on or before 25 Jan 2022. For questions or additional information, email [PACPARS@uscg.mil](mailto:PACPARS@uscg.mil).

**OREGON – CAPE SEBASTIAN TO HUMBURG MOUNTAIN – ROGUE RIVER – Shoaling and limited Coast Guard response capability (Revised from LNM 28/21)**

The Coast Guard provides a seasonal Search and Rescue Detachment (SARDET) on the Rogue River in Gold Beach, Oregon. This unit exists to ensure the safety of the maritime community along the Southern Oregon Coast during periods of increased recreational vessel activity. Currently, significant shoaling is present in the Rogue River and mariners will experience shallower water depths than normal and shallower than charted. During most tidal conditions, the shoaling is preventing the Coast Guard from operating vessels in the river and entrance due to insufficient water depth. USCG Station Chetco River will continue to site a response vessel at Rogue River as often as practicable with respect to available water depth. Additional Search and Rescue response, such as outside the mouth of the river and helicopter operations will continue to be provided from Station Chetco River and Sector North Bend. Dredging operations at Rogue River have been suspended for the 2021 season and are planned for summer of 2022.

Chart 18601

LNM: 33/21

**COLUMBIA RIVER – LAKE CELILO – The Dalles Navigation Lock inspection**

The Dalles Navigation Lock, at Columbia River mile 191, will be out of service from 0800 – 1700 daily on 14 – 15 Sep 2021. The outage is required to perform inspections on the downstream miter gate. For more information, contact The Dalles Lock Operator at (541) 298-4007.

Charts: 18532 18533

LNM: 33/21

**OREGON – IDAHO – GPS testing**

US Strategic Command has proposed GPS testing encompassing portions of eastern Oregon and western Idaho. The center point of the test will be near Boise, Idaho, at position 42-44-47.5 N, 115-37-01.5 W with a radius of 149 NM. The GPS navigation signal may be unreliable due to testing on GPS frequencies used by shipboard navigation and handheld systems. Systems that rely on GPS, such as e-911, AIS and DSC, may be affected. The testing frequencies will be GPS L1 and L2. Testing dates and times are as listed below, using Universal Time Coordinated (UTC) or Zulu time:

07 SEP 21 / 1600Z - 2300Z  
 08 SEP 21 / 1600Z - 2300Z  
 09 SEP 21 / 1600Z - 2300Z  
 10 SEP 21 / 1600Z - 2300Z  
 11 SEP 21 / 1600Z - 2300Z  
 12 SEP 21 / 1600Z - 2300Z

For additional information or to express concerns, contact the Coast Guard Navigation Center at (703) 313-5900 or at <https://www.navcen.uscg.gov/?pageName=dgpsSiteInfo&currentOutages>.

LNM: 33/21

**OREGON - WILLAMETTE RIVER – PORT OF PORTLAND – Bridge temporary deviations**

The Coast Guard intends to issue a temporary deviation to the operating schedule that governs the Broadway Highway Bridge (LLNR 14955.2), mile 11.7, Burnside Highway Bridge (LLNR 14955.4), mile 12.4, Morrison Highway Bridge (LLNR 14955.5), mile 12.8, crossing the Willamette River at Portland, Oregon. This deviation is necessary to accommodate the Portland Marathon event. This deviation authorizes the three subject bridges to remain in the closed-to-navigation position to allow safe and timely movement of event participants from 0630 until 1400 on 03 Oct 2021. The vertical clearances for these bridges in the closed-to-navigation position are: 69 feet for the Broadway Bridge, 41 feet for Burnside Bridge and 69 feet for the Morrison Highway Bridge (all clearances are referenced to the vertical clearance above Columbia River Datum 0.0.) Vessels which do not require a bridge opening may continue to transit beneath the bridge during this closure period. These bridges will be able to open for emergencies, and there is no immediate alternate route for vessels to pass. In accordance with 33 CFR 117.35(e), the drawbridges must return to their regular operating schedule immediately at the end of the effective period of this temporary deviation. If any mariner cannot support the closures of these bridges at the stated date and times, send objections to D13-SMB-D13-BRIDGES@uscg.mil by 26 Aug 2021.

Chart 18526

LNM: 32/21

**WASHINGTON – STRAIT OF JUAN DE FUCA – CLALLAM BAY – Research buoy deployment**

The Pacific Northwest National Laboratory (PNNL) will deploy a surface marking float and Sofar Spotter buoy (<https://www.sofaroccean.com/products/spotter>) in Clallam Bay on the Strait of Juan de Fuca in approximate position 48-16-07.8 N, 124-16-29.8 W from 24 Aug – 29 Sep 2021. The buoy will be collecting environmental data. The buoy will be accompanied by two surface floats, labeled to identify PNNL as the owner, that it is part of a research project, and will provide contact information (phone number). A research vessel will be onscene conducting the deployment and recovery at and can be hailed on VHF-FM Channel 16. For additional information contact PNNL Marine Sciences Laboratory, Susan Southard, at (360) 681-3615 (office) or (360) 460-1999 (cell) or email [sue.southard@pnnl.gov](mailto:sue.southard@pnnl.gov).

Chart 18460

LNM: 32/21

**WASHINGTON – PUGET SOUND – APPLE COVE TO KEYPORT – Temporary disestablishment of West Point Light**

West Point Light (LLNR 16800) and the associated sound signal will be temporarily disestablished for approximately three days at the end of August 2021, during a planned power outage. The status of the light will be updated in a Broadcast Notice to Mariners.

Mariners are encouraged to share comments on the performance and operation of these aids to navigation. All comments should be sent to the email address D13-SMB-D13-LNM@uscg.mil. Any discrepancy for these or other Aids to Navigation should continue to be reported to US Coast Guard Sector Puget Sound.

**WASHINGTON – LAKE WASHINGTON SHIP CANAL – SHILSHOLE BAY – Bridge notice**

Burlington Northern Santa Fe (BNSF) has requested a deviation for the Salmon Bay Railroad Bridge (LLNR 18169), mile 0.1, across the Lake Washington Ship Canal, to remain in the closed-to-navigation position from 0900 to 1800 on 18 – 19 Oct 2021. The request would allow for rail maintenance to be performed. The Coast Guard is requesting from mariners and maritime stakeholders to submit comments if you cannot support the time and dates requested. If no comments are received, the Coast Guard intends to issue a temporary deviation authorizing the Salmon Bay Railroad Bridge to remain in the closed-to-navigation position to allow safe rail maintenance from 0900 to 1800 on 18 – 19 Oct 2021. The subject bridge provides 43 feet of vertical clearance in the closed-to-navigation position. Vessels which do not require a bridge opening may continue to transit beneath the bridge during this closure period. The subject bridge will be able to open for emergencies with at least a 30-minute notice, and there is no immediate alternate route for vessels to pass. In accordance with 33 CFR 117.35(e), the drawbridges must return to their regular operating schedule immediately at the end of the effective period of this temporary deviation. Please send comments to D13-SMB-D13-BRIDGES@uscg.mil by 01 Sep 2021.

Chart 18447

LNM: 32/21

**OREGON – YAQUINA BAY TO COLUMBIA RIVER – Underwater cable survey**

The R/V Geo Resolution will conduct underwater telecommunication cable survey operations off the Oregon Coast beginning on 20 Aug through 30 Sep 2021. Operations will begin on the central Oregon coast and progress offshore towards 36-00 N, 137-00W, and run 24 hours a day. The operations include sonar operations with both ship mounted systems and towed equipment extending up to 2 NM behind the ship. The R/V Geo Resolution will monitor VHF-FM channels 16 and 13. Additionally, the ship can be contacted via email at grcaptain@egssurvey.com

Chart 18520

LNM: 31/21

**COLUMBIA RIVER – BONNEVILLE TO THE DALLES – Bridge notice**

ODOT is conducting a bridge deck replacement project on the SR 197 Highway Bridge (LLNR 12133) at Columbia RM 191.6 near The Dalles, OR and Dallesport WA. A work access and containment platform will be suspended beneath the bridge starting in mid-August and will be in place continuously until 27 May 2022. While in place, the vertical navigation clearance will be reduced by approximately 3 feet to a minimum clearance of 97 feet Columbia River datum OHW. If a vessel needs the full 100 feet of vertical clearance for passage through the subject bridge, contact the ODOT Resident Engineer with no less than 12 hours of notice. For more information, or to make a request, contact ODOT Resident Engineer Brad DeHart at (541) 296-2800 or bradley.k.dehart@odot.state.or.us.

Chart 18532

LNM: 31/21

**SECTION II - DISCREPANCIES**

This section lists all reported and corrected discrepancies related to Aids to Navigation in this edition. A discrepancy is a change in the status of an aid to navigation that differs from what is published or charted.

**DISCREPANCIES (FEDERAL AIDS)**

| LLNR   | Aid Name   | Status             | Chart No. | BNM Ref. | LNM St | LNM End |
|--------|--|--------------------|-----------|----------|--------|---------|
| 689    | NOAA Environmental Lighted Buoy 46089                          | MISSING            | 18003     | 0695-20  | 41/20  |         |
| 756    | Strait of Juan De Fuca Traffic Separation Lane Lighted Buoy JA | MISSING            | 18485     | 0828-20  | 47/20  |         |
| 765.45 | DART Tsunami Warning Lighted Buoy 46452                        | ADRIFT             | 18003     | 1009-18  | 49/18  |         |
| 765.5  | NOAA Environmental Lighted Buoy 46005                          | LT EXT             | 18007     | 0197-20  | 08/20  |         |
| 8635   | Chetco River Entrance Light 9                                  | STRUCT DEST/TRLB   | 18602     | 0248-19  | 15/19  |         |
| 9451   | Siuslaw River North Jetty Light 3                              | STRUCT DEST/LT EXT | 18583     | 0023-21  | 02/21  |         |
| 10220  | Miller Sands Channel Lighted Buoy 6                            | LT EXT             | 18523     | 0432-21  | 26/21  |         |
| 10255  | Pillar Rock Lower Range Lighted Buoy 14                        | LT EXT             | 18523     | 0433-21  | 26/21  |         |
| 10280  | Pillar Rock Upper Range Rear Light                             | REDUCED INT        | 18523     | 0434-21  | 26/21  |         |
| 10401  | Puget Island Light 43  | DAYMK MISSING      | 18523     | 0474-21  | 29/21  |         |
| 10600  | Eureka Dike Light 79   | LT EXT             | 18523     | 0379-21  | 22/21  |         |
| 11430  | Fisher Quarry Channel Range Front Light                        | LT IMCH            | 18531     | 0313-20  | 18/21  |         |
| 11465  | Government Island Range Front Light                            | LT IMCH            | 18531     | 0314-21  | 18/21  |         |
| 11490  | Lady Island Range Front Light                                  | LT IMCH            | 18531     | 0315-21  | 18/21  |         |
| 11530  | Washougal Lower Range Front Light                              | LT EXT             | 18531     | 0289-21  | 17/21  |         |

|              |  |                      |              |                |              |
|--------------|--|----------------------|--------------|----------------|--------------|
| 11870        | Wind Mountain Upper Range Front Light 26                       | LT EXT               | 18532        | 0257-21        | 14/21        |
| <b>12620</b> | <b>Messner Upper Range Rear Light</b>                          | <b>LT EXT</b>        | <b>18537</b> | <b>0565-21</b> | <b>34/21</b> |
| 12980        | Lake Wallula West Channel Junction Light W                     | STRUCT DEST/TRLB     | 18542        | 0208-20        | 09/20        |
| 16071.25     | Hoquiam River Obstruction Buoy                                 | MISSING/TRDBN        | 18502        | 0178-20        | 08/20        |
| 16085        | Quillayute River Entrance Lighted Buoy 2                       | LT IMCH              | 18480        | 0040-21        | 03/21        |
| 16136        | Strait of Juan De Fuca Traffic Separation Lane Lighted Buoy JA | MISSING              | 18485        | 0828-20        | 47/20        |
| 16365        | Salmon Bank Lighted Gong Buoy 3                                | LT EXT               | 18434        | 0542-21        | 33/21        |
| 17360        | Nisqually Flats Light 3  | STRUCT DEST/TRLB     | 18448        | 0404-21        | 24/21        |
| 19120        | Swinomish Channel North Entrance Light 18                      | STRUCT DEST/TRLB     | 18427        | 0546-20        | 34/20        |
| 19975        | International Boundary Light G                                 | LT EXT/DAYMK MISSING | 18421        | 0720-20        | 42/20        |

**DISCREPANCIES (FEDERAL AIDS) CORRECTED**

| LLNR  | Aid Name                               | Status            | Chart No. | BNM Ref. | LNM St | LNM End |
|-------|--|-------------------|-----------|----------|--------|---------|
| 9452  | Siuslaw River North Jetty Sound Signal | WATCHING PROPERLY | 18583     | None     | 34/21  | 34/21   |
| 12600 | Messner Middle Range Rear Light        | WATCHING PROPERLY | 18537     | None     | 34/21  | 34/21   |

**DISCREPANCIES (PRIVATE AIDS)**

| LLNR    | Aid Name   | Status  | Chart No. | BNM Ref. | LNM St | LNM End |
|---------|--|---------|-----------|----------|--------|---------|
| 11247   | Hayden Island Water Monitoring Lighted Buoy A          | MISSING | 18526     | 0413-21  | 25/21  |         |
| 16218   | Scripps Institute Wave Recorder Lighted Buoy 46267/248 | MISSING | 18465     | 0501-21  | 30/21  |         |
| 16300   | Ediz Hook Salmon Pen Light A                           | MISSING | 18468     | 0593-20  | 36/20  |         |
| 16307   | Ediz Hook Salmon Pen Light B                           | MISSING | 18468     | 0593-20  | 36/20  |         |
| 16847   | Elliott Bay Fish Haven Buoy A                          | MISSING | 18450     | 0169-21  | 08/21  |         |
| 16848   | Elliott Bay Fish Haven Buoy B                          | MISSING | 18450     | 0168-21  | 08/21  |         |
| 17228.1 | Tacoma Narrows East Highway Bridge NE Fog Horn         | SS IMCH | 18474     | 0521-21  | 31/21  |         |
| 19173   | Deepwater Bay North Fish Pen Lights (2)                | MISSING | 18427     | 0784-20  | 45/20  |         |

**DISCREPANCIES (PRIVATE AIDS) CORRECTED**

| LLNR | Aid Name | Status | Chart No. | BNM Ref. | LNM St | LNM End |
|------|----------|--------|-----------|----------|--------|---------|
|------|----------|--------|-----------|----------|--------|---------|

None

**PLATFORM DISCREPANCIES**

| Name | Status | Position | BNM Ref. | LNM St | LNM End |
|------|--------|----------|----------|--------|---------|
|------|--------|----------|----------|--------|---------|

None

**PLATFORM DISCREPANCIES CORRECTED**

| Name | Status | Position | BNM Ref. | LNM St | LNM End |
|------|--------|----------|----------|--------|---------|
|------|--------|----------|----------|--------|---------|

None

**SECTION III - TEMPORARY CHANGES and TEMPORARY CHANGES CORRECTED**

This section contains temporary changes and corrections to Aids to Navigation for this edition. When charted aids are temporarily relocated for dredging, testing, evaluation, or marking an obstruction, a temporary correction shall be listed in Section IV giving the new position.

**TEMPORARY CHANGES**

| LLNR | Aid Name                      | Status | Chart No. | BNM Ref. | LNM St | LNM End |
|------|-------------------------------|--------|-----------|----------|--------|---------|
| 8635 | Chetco River Entrance Light 9 | TRLB   | 18602     | 0436-19  | 25/19  |         |

|          |  |                           |       |         |       |
|----------|--|---------------------------|-------|---------|-------|
| 9285     | Winchester Bay Harbor Entrance Daybeacon 1 | TRUB                      | 18584 | 0353-21 | 21/21 |
| 10190    | Harrington Point Channel Lighted Buoy 54   | DISCONTINUED FOR DREDGING | 18521 | 0512-21 | 31/21 |
| 12980    | Lake Wallula West Channel Junction Light W | TRLB                      | 18542 | 0214-20 | 10/20 |
| 16071.25 | Hoquiam River Obstruction Buoy             | TRDBN                     | 18502 | 0534-21 | 32/21 |
| 17090    | Browns Point Light                         | DISCONTINUED              | 18453 | 0496-21 | 30/21 |
| 17090    | Browns Point Light                         | TRLB                      | 18453 | 0513-21 | 31/21 |
| 17360    | Nisqually Flats Light 3                    | TRLB                      | 18448 | 0409-21 | 24/21 |
| 19120    | Swinomish Channel North Entrance Light 18  | TRLB                      | 18427 | 0573-20 | 35/20 |

**TEMPORARY CHANGES CORRECTED**

| LLNR | Aid Name | Status | Chart No. | BNM Ref. | LNМ St | LNМ End |
|------|----------|--------|-----------|----------|--------|---------|
|------|----------|--------|-----------|----------|--------|---------|

None

**PLATFORM TEMPORARY CHANGES**

| Name | Status | Position | BNM Ref. | LNМ St | LNМ End |
|------|--------|----------|----------|--------|---------|
|------|--------|----------|----------|--------|---------|

None

**PLATFORM TEMPORARY CHANGES CORRECTED**

| Name | Status | Position | BNM Ref. | LNМ St | LNМ End |
|------|--------|----------|----------|--------|---------|
|------|--------|----------|----------|--------|---------|

None

**SECTION IV - CHART CORRECTIONS**

This section contains corrections to federally and privately maintained Aids to Navigation, as well as NOS corrections.

This section contains corrective actions affecting chart(s). Corrections appear numerically by chart number, and pertain to that chart only. It is up to the mariner to decide which chart(s) are to be corrected. The following example explains individual elements of a typical chart correction.

| Chart Number                                       | Chart Edition                | Edition Date                | Last Local Notice to Mariners | Horizontal Datum Reference | Source of Correction   | Current Local Notice to Mariners |
|--|------------------------------|-----------------------------|-------------------------------|----------------------------|------------------------|----------------------------------|
| 12327  | 91st Ed.                     | 19-APR-97                   | Last LNM: 26/97               | NAD 83                     |                        | 27/97                            |
| Chart Title: NY-NJ-NEW YORK HARBOR - RARITAN RIVER |                              |                             |                               |                            |                        |                                  |
| Main Panel 2245 NEW YORK HARBOR                    |                              |                             |                               |                            |                        |                                  |
| (Temp) ADD   | NATIONAL DOCK CHANNEL BUOY 3 |                             |                               |                            | CGD01 at 40-41-09.001N | 074-02-48.001W                   |
| Corrective Action                                  | Green can                    | Object of Corrective Action |                               |                            | Position               |                                  |

(Temp) indicates that the chart correction action is temporary in nature. Courses and bearings are given in degrees clockwise from 000 true. Bearings of light sectors are toward the light from seaward. The nominal range of lights is expressed in nautical miles (NM) unless otherwise noted.

| Chart Number  | Chart Edition                                 | Edition Date | Last LNM        | Horizontal Datum Reference | Correction                                | Current Local Notice to Mariners |
|---|---|--------------|-----------------|----------------------------|---|----------------------------------|
| 18581   | 19th Ed.                                      | 01-OCT-11    | Last LNM: 30/20 | NAD 83                     |   | 34/21                            |
| Chart Title: Yaquina Bay and River; Continuation of Yaquina River |   |              |                 |                            |   |                                  |
| CHART OR - YAQUINA BAY AND RIVER. Page/Side: N/A                  |   |              |                 |                            |   |                                  |
| RELOCATE  | Yaquina River Daybeacon 21 and Delete Ra ref. |              |                 |                            | CGD13 from 44-35-12.163N to 44-35-12.195N | 124-01-17.971W<br>124-01-17.963W |
| RELOCATE  | Yaquina River Daybeacon 26                    |              |                 |                            | CGD13 from 44-34-47.550N to 44-34-47.525N | 124-00-07.538W<br>124-00-07.512W |
| RELOCATE  | Yaquina River Light 20                        |              |                 |                            | CGD13 from 44-35-22.497N to 44-35-23.582N | 124-01-22.841W<br>124-01-22.637W |
| RELOCATE  | Yaquina River Light 25                        |              |                 |                            | CGD13 from 44-34-59.975N to 44-34-59.560N | 124-00-44.550W<br>124-00-44.522W |

|          |                            |   |                                  |
|----------|----------------------------|---|----------------------------------|
| RELOCATE | Yaquina River Daybeacon 26 | CGD13<br>from 44-34-47.550N<br>to 44-34-47.525N | 124-00-07.538W<br>124-00-07.512W |
| RELOCATE | Yaquina River Daybeacon 28 | CGD13<br>from 44-34-29.737N<br>to 44-34-29.781N | 123-59-16.390W<br>123-59-16.338W |
| RELOCATE | Yaquina River Daybeacon 30 | CGD13<br>from 44-34-18.000N<br>to 44-34-18.054N | 123-58-43.500W<br>123-58-43.470W |
| RELOCATE | Yaquina River Daybeacon 31 | CGD13<br>from 44-34-21.252N<br>to 44-34-21.250N | 123-58-06.478W<br>123-58-06.342W |
| RELOCATE | Yaquina River Daybeacon 34 | CGD13<br>from 44-34-41.077N<br>to 44-34-41.073N | 123-57-53.388W<br>123-57-53.277W |
| RELOCATE | Yaquina River Daybeacon 43 | CGD13<br>from 44-35-23.369N<br>to 44-35-22.319N | 123-56-24.774W<br>123-56-24.561W |
| RELOCATE | Yaquina River Daybeacon 45 | CGD13<br>from 44-35-39.214N<br>to 44-35-39.332N | 123-56-15.652W<br>123-56-15.521W |
| RELOCATE | Yaquina River Light 38     | CGD13<br>from 44-35-04.000N<br>to 44-35-04.343N | 123-57-29.246W<br>123-57-29.209W |

**SECTION V - ADVANCE NOTICES**

This section contains advance notice of approved projects, changes to aids to navigation, or upcoming temporary changes such as dredging, etc. Mariners are advised to use caution while transiting these areas.

**SUMMARY OF ADVANCED APPROVED PROJECTS**

| <u>Approved Project(s)</u> | <u>Project Date</u> | <u>Ref. LNM</u> |
|----------------------------|---------------------|-----------------|
| None                       |                     |                 |

**Advance Notice(s)**

**WASHINGTON – APPROACHES TO STRAIT OF JUAN DE FUCA – QUILLAYUTE RIVER – Restoration of the sector light at Quillayute River Direction Light**

Due to equipment failure, the U.S. Coast Guard had temporarily changed the lighting characteristic of Quillayute River Direction Light (LLNR 16090) from a three color sector light to a yellow occulting light, flashing every 4s. During the summer of 2021, the light characteristic will be restored to a three color sector light with the following characteristics:

Fixed Green, White and Red light shown 24 hours a day, with the Green sector visible from 006.25° to 007.25°, the White sector visible from 004.75° to 006.25° (0.75° each side of 005.5°) and the Red sector visible from 003.75° to 004.75°. All bearings are listed as being viewed from sea to the light structure.

A Broadcast Notice to Mariners will be made, and the nautical chart and Light List will be updated upon the completion of the change. Mariners are encouraged to share comments on this change and the performance and operation of this aid to navigation. All comments should be sent to the email address D13-SMB-D13-LNM@uscg.mil. Any discrepancy for these or other Aids to Navigation should continue to be reported to US Coast Guard Sector Puget Sound.

Chart 18480

LNM: 27/21

**SECTION VI - PROPOSED CHANGES**

Periodically, the Coast Guard evaluates its system of aids to navigation to determine whether the conditions for which the aids to navigation were established have changed. When changes occur, the feasibility of improving, relocating, replacing, or discontinuing aids are considered. This section contains notice(s) of non-approved, proposed projects open for comment. SPECIAL NOTE: Mariners are requested to respond in writing to the District office unless otherwise noted (see banner page for address).

**PROPOSED WATERWAY PROJECTS OPEN FOR PUBLIC COMMENT**

| <u>Proposed Project(s)</u> | <u>Closing</u> | <u>Docket No.</u> | <u>Ref. LNM</u> |
|----------------------------|----------------|-------------------|-----------------|
| None                       |                |                   |                 |

**Proposed Change Notice(s)**

None

**SECTION VII - GENERAL**

This section contains information of general concern to the Mariners. Mariners are advised to use caution while transiting these areas.

**SUMMARY OF BRIDGE LIGHTING DISCREPANCIES AND CORRECTIONS**

The summary of Bridge Lighting Discrepancies and Corrections is listed as Enclosure (1) of this Local Notice to Mariners.

LNM: 34/21

**SUMMARY OF DREDGING OPERATIONS**

The summary of Dredging Operations is listed as Enclosure (2) of this Local Notice to Mariners.

LNM: 34/21

**SUMMARY OF MARINE EVENTS**

The summary of Marine Events is listed as Enclosure (3) of this Local Notice to Mariners.

LNM: 34/21

**OREGON – APPROACHES TO YAQUINA AND DEPOE BAY – Bridge construction notice (Revised from LNM 04/21)**

ODOT is conducting bridge concrete repairs to the Yaquina Bay Highway 101 Bridge (LLNR 9627) in Newport, OR, at Yaquina Bay mile 0.7. A low level access walkway system will be constructed across the 4 concrete arch spans from the south bank heading north. While erected, the vertical navigation clearance will be reduced to a minimum of 16 feet at MHHW. The low level walkway system will span from the south bank to the North approx. 880 feet. This system will be built in April 2021 and will be functional until approximately the summer of 2024. The main navigational channel will not be impeded by the project as that section is made of steel. Mariners are requested not to loiter under the construction area due to fall hazards. For more information, contact Dan Lutze, the project superintendent, at (503) 519-5408.

Chart 18561

LNM: 06/21

**COLUMBIA RIVER – PACIFIC OCEAN TO HARRINGTON POINT – Youngs Bay Highway Bridge Repair notice**

ODOT will be conducting repair work on the Youngs Bay Highway Bridge (LLNR 14573) at Warrenton, Oregon, from 11 Mar 2019 through Nov 2021. Mariners are advised that there will be barges and assist vessels at the work site and a containment system under the bridge reducing vertical clearance. There will be no containment system under the liftspan of the bridge, and the main channel will remain clear for traffic, with no change to the operation of the lift. Mariners are requested to use slow speed to minimize wake. Interested parties can contact the on-site construction manager, Craig Gries at (503) 580-6319 or email at cgries@orstbridge.com

Chart 18521

LNM: 10/19

**COLUMBIA RIVER – BONNEVILLE TO THE DALLES – Marine construction/demolition at Drano Lake**

Advanced American Construction (AAC) will be conducting existing pier removal in the Columbia River at the mouth of Little White Salmon River / Drano Lake near RM 116. Operations include wire saw, concrete demolition and pile removal. Onsite work is expected to occur from 06 Jul 2021 to 28 Feb 2022. AAC's Derrick Barge DB 4100 and tug Lindy Marie, and work barges will be on station and monitoring VHF-FM channel 16 during the working hours of 0700 through 1800, Monday through Saturday. The floating equipment will remain on-station during non-working hours and will be illuminated at night by fixed white lights on all corners. Mariners are asked to transit the area with extreme caution and minimize wake. Please contact Shad Huber (360) 953-4833 Shadh@callAAC.com or Scott Miller at (503) 568-4313 scottm@callAAC.com with questions.

Chart 18532

LNM: 23/21

**WASHINGTON – LAKE WASHINGTON SHIP CANAL – UNION BAY REACH – Montlake Street Bridge deviation**

The Coast Guard has approved a temporary deviation to the operating schedule that governs the Montlake Street Bridge (LLNR 18240) across the Lake Washington Ship Canal, mile 5.2, at Seattle, Washington. Beginning at 0001 on 09 Aug 2021 until 1700 on 31 Oct 2021, the draws of the Montlake Bridge will be authorized to open only a single drawbridge leaf for the passage of marine vessel traffic (as opposed to the normal double leaf opening). The temporary operating schedule is described below:

| Month           | Day                     | Hour       | Position            | Note  |
|-----------------|-------------------------|------------|---------------------|---|
| 09 Aug – 03 Sep | Mon-Sun                 | 24 Hrs/day | Single leaf opening | Double leaf opening with at least 24Hr advance notice |
| 04 Sep – 31 Oct | Fri-Mon (weekends only) | 2300-0500  | Single leaf opening | Double leaf opening with at least 24Hr advance notice |

During this temporary deviation all requirements of CFR 33CFR§117.1051(e) which governs the Montlake Bridge remain in effect. The only change is allowing the bridge to operate in single leaf mode. This temporary deviation is in support of replacing the roadway decking. The Montlake Bridge in the closed-to-navigation position provides 30 feet of vertical navigation clearance, and 46 feet of vertical navigation clearance throughout the center 60 feet of the bridge; vertical clearance references to the Mean Water Level of Lake Washington. The bridge with both bascule leaves in the open-to-navigation position provides a horizontal navigation clearance of 129ft. During the single leaf openings, the horizontal clearance will be reduced to 64.5ft. Vessels unable to navigate through the bridge in single leaf mode with the reduced horizontal clearance may request a full opening with at least 24 hours' notice given to the bridge operator at (206) 720-3048, or via VHF-FM Channel 13. Vessels able to pass through the bridge in the closed-to-navigation position may do so at any time. The bridge will only be able to give emergency responders a half opening without a 24-hour notice. The Montlake Bridge will operate per 33 CFR 117.1051(e) at the end of this deviation. For more information, contact Alyson Rae at raea@wsdot.wa.gov.

Chart 18447

LNM: 18/21

**WASHINGTON – LAKE WASHINGTON SHIP CANAL – UNION BAY REACH – Bridge deviation**

The Coast Guard has approved a temporary deviation from the normal operating schedule that governs the Montlake Street Bridge (LLNR 18240) across the Lake Washington Ship Canal, mile 5.2. The Montlake Street Bridge need not open the draw for marine vessels during heavy road traffic for the University of Washington football games on the following dates and times:

- 04 Sep 2021, 1430 to 1700 and 2000 to 2230;
- 18 Sep 2021, 1030 to 1330 and 1600 to 1900;
- 25 Sep 2021, TBA at a later date;
- 16 Oct 2021, TBA at a later date;
- 06 Nov 2021, TBA at a later date;
- 13 Nov 2021, TBA at a later date;
- 26 Nov 2021, TBA at a later date.

The deviation is necessary to accommodate vehicular traffic attending football games at Husky Stadium at the University of Washington, in Seattle, Washington. This deviation will allow the Montlake Bridge to remain in the closed-to-navigation position before and after each game. The Montlake Bridge in the closed-to-navigation position provides 30 feet of vertical clearance throughout the navigation channel, and 46 feet of vertical clearance throughout the center 60 feet of the bridge; vertical clearance references to the Mean Water Level of Lake Washington. Vessels which do not



**WASHINGTON – LAKE WASHINGTON SHIP CANAL – UNION BAY REACH – Bridge deviation**

require a bridge opening may continue to transit beneath this bridge during the closure. The bridge will be required to open, if needed, for vessels engaged in emergency response operations during this closure period. The Coast Guard will publish any updates or changes to this operating schedule in future LNM publications, once game times are announced. The bridge shall operate in accordance to 33 CFR § 117.897 at all other times. For more information on these events, contact Colleen Kelly, WSDOT, at (425) 739-3700.

Chart 18447

LNM: 28/21

**WASHINGTON - LAKE WASHINGTON SHIP CANAL - UNION BAY REACH – SR520 West Approach Bridge South, Bridge Replacement (Revised from LNM 50/20)**

American Bridge Company will conduct demolition work on the existing SR520 West Approach Bridge South utilizing marine equipment from 18 Jan through 31 Dec 2021. Furthermore, new bridge construction on a similar alignment will be conducted beyond demolition activities through 31 Mar 2023. The operating zone will be from approximately 1300 ft west of the west navigation channel up to and including the west lane of the western navigation channel (Channel A). Equipment will include two marine cranes on separate barges in addition to material and environmental containment barges primarily functioning from the south side of the bridge. During this period, the navigation channel directly west of the Floating Bridge Pontoon (Channel B) will remain open to vessels at all times but with periodic closures of the west lane (Channel A). Periodic closures of Channel A will be during the hours of 0600-1800. Mariners are advised to transit with caution when navigating near the project area and that no boaters are permitted within the active work zone at any time. In addition, reduced speed and/or minimal wake is requested when transiting the navigation channels. A graphic of the operating area and the channel locations was included as Enclosure (5) of LNM 31/21. For more information, contact Eoin Duffy at (914) 263-5875 or email at eduffy@americanbridge.net.

Chart 18447

LNM: 28/21

**WASHINGTON – LAKE WASHINGTON – SAMMAMISH RIVER – West Sammamish River Bridge Notice (Revised from LNM 13/20)**

Construction on the West Sammamish River Bridge at Sammamish River mile 0.5 near Kenmore, Washington is ongoing and will continue through October 2023. The western bridge will be removed and a new bridge constructed. Mariners may transit through the construction zone, but are advised that temporary work piers will be constructed on the west side of the bridge, and will reduce the horizontal span to 40 feet of clearance. Containment will be installed under the bridge reducing the vertical clearance from 11.5 feet to 10.5 feet measured at OHW. Working hours will normally be from 0600 to 1800 six days per week, however, during the in water work window of 01 Jul to 31 Aug, operations will be 24 hours per day. If construction falls behind schedule, the work hours may shift to 24 hours/seven days per week. For more information regarding construction, contact Jake Brockmoller at (253) 888-2514, or Mick Cannon at (253) 377-1041.

Chart 18447

LNM: 05/21

**WASHINGTON – STRAIT OF JUAN DE FUCA TO STRAIT OF GEORGIA – DECEPTION PASS – Bridge notice (Revised from LNM 34/20)**

WSDOT will re-start the cleaning, painting and repairing of the bridges over Deception Pass and Canoe Pass south of Anacortes. The work is expected to begin at 0600 on 01 Mar 2021 and be complete by 2000 on 30 Nov 2021. Deception Pass Bridge has a vertical clearance of 144 feet and Canoe Pass Bridge has a vertical clearance of 154 feet over the water. A full containment system will be attached to the bridge 24-hours a day. No in water work will be conducted, although one support vessel will be needed for worker safety. Mariners are advised to use caution while transiting the area. For further information on this project contact the Project Engineer, Shane Spahr, at 360-848-7103 or SpahrS@wsdot.wa.gov

Charts: 18421 18427

LNM: 05/21

**WASHINGTON – PUGET SOUND – STILLAGUAMISH RIVER – Bridge notice**

Washington State Department of Transportation will be cleaning and painting the I-5 Bridge (5/670W) over the Stillaguamish River west of Arlington, Washington on I-5 between mileposts 209.35 to MP 209.47. Construction will occur from March 2021 through October 2021. A containment system will be attached to the bridge 24-hours a day and will prevent any falling debris. There will be 8-14 feet of clearance above ordinary high water elevation. Work will not occur in the water, although one support vessel will be needed for worker safety. Mariners are advised to use caution while transiting the area. For additional information, contact Shane Spahr, P.E. at (360) 848-7103 or SpahrS@wsdot.wa.gov .

Chart 18441

LNM: 02/21

**IDAHO – LAKE PEND OREILLE – BNSF Railroad Bridge Notice**

The construction of a new BNSF Railroad Bridge 3.9 (LLNR 20087) on Lake Pend Oreille (LPO) Mile 2.7 at Sandpoint, ID, is continuing. Updates to the project's phased work, during the 2021 high water, summer-pool LPO water level, are as follows: the primary work staging will resume from the temporary work trestle at the north shore project work area (Dog Beach). The south shore work areas and temporary staging/access have been final configured as per project environmental permits. Immediately adjacent to and west of the existing single-track BNSF Bridge 3.9 over LPO, work barges will continue to work along the entire project corridor, specific locations changing as new bridge construction progresses. Barges will have crane support for materials/equipment staging, pipe pile driving, and welding (pile bent cross-bracing) activities. Hours of construction will continue to be 0700 to 1900, Monday to Saturday. The Ames-owned tugboat (Audrey B.) will continue to position barges within the BNSF 200' ROW as needed in varying linear work zone locations. Ames work crews and other project personnel will continue to access work barges via Ames-owned shuttle boats. The published navigation channels at the existing BNSF Bridge 3.9 will continue to be appropriately marked, lighted and remain unobstructed for safe navigation. Vertical clearance of the existing bridge remains unchanged. The temporary work trestle at Dog Beach, all work barges, and a project survey post will continue to have navigation lights and work zone buoys in accordance with the USCG Navigation Rules (COLREGS-Inland). Significant changes to the work activities or locations will be updated in subsequent LNMs. Enclosure (4) of LNM 26/21 displays the project vicinity and expected locations of barges for this summer work season activities. The point of contact for the bridge contractor, Ames Construction, Inc. is Mike Pamperin at (612) 741-6535. For additional information contact the BNSF Project Engineer, Ryan Kopera at (913) 284-3467.

Chart 18554

LNM: 22/21

**IDAHO – LAKE PEND OREILLE – Bridge construction notice**

Idaho Transportation Department (ITD) will be conducting maintenance on the southern half of the Sandpoint US-95 Highway Bridge (LLNR 20086) across Lake Pend O'Reille on the Sagle, ID, side from Mar – Nov 2021. The working hours will be from 0500 to 2000 daily. Three work barges will be towed to the work site from Kramer Marina at Hope, ID. All barges will be anchored and lighted with all around white lights at each corner. A 100 foot by 400 foot construction zone buoy line, each side of the bridge, will be set with "Boats Keep Out", white and orange in color, with the exclusion marking (diamond with plus sign in the center). The buoy lights will be white, visible for one mile and have a flash timing of "FL W 2s" (flashing white two seconds, 30 flashes per minute). Four support vessels will be on site, including the Valarie Lee, which will tow and reposition the barges. Diving operations will be conducted during maintenance. During periods of heavy weather, the barges will be towed and anchored in the vicinity of Sagle Slough. Mainers are requested to not enter the construction zone, but if entry is needed, contact the Valarie Lee via VHF-FM Channel 16 or one the

**IDAHO – LAKE PEND OREILLE – Bridge construction notice**

of the onsite contacts, and transit at slowest speed. ITD has contracted McMillen Jacobs Associates for the maintenance, and the onsite contacts are Mike Nixon at (925) 876-7052, and Carson Haslam at (208) 339-6735.

Chart 18554

LNM: 09/21

**COLUMBIA RIVER – SNAKE RIVER – 2021 summer lockage schedule for recreational vessels (Revised from LNM 19/21)**

The USACE, Portland and Walla Walla Districts, are implementing the 2021 summer lockage schedule for the passage of recreational vessels through the following navigation locks:

- Bonneville Lock and Dam Columbia River Mile 145 (541) 374-8323
- The Dalles Lock and Dam Columbia River Mile 191 (541) 506-8211
- John Day Lock and Dam Columbia River Mile 216 (541) 298-9712
- McNary Lock and Dam Columbia River Mile 292 (541) 922-2231
- Ice Harbor Lock and Dam Snake River Mile 9.7 (509) 543-3231
- Lower Monumental Lock and Dam Snake River Mile 41.6 (509) 282-7231
- Little Goose Lock and Dam Snake River Mile 70.3 (509) 399-2233 x231
- Lower Granite Lock and Dam Snake River Mile 107.5 (509) 843-2231

The following annual recreational craft lockage schedules will be implemented for all the locks beginning 16 May through 12 Sep 2021:

Upstream Direction Times: 0900, 1200, 1500, 1800, 2100  
 Downstream Direction Times: 0930, 1230, 1530, 1830, 2130

When a recreational vessel lockage schedule is in effect, recreational vessels will only be allowed to lock through at the times designated for such lockages and they will take precedence over commercial vessels. Commercial vessels will continue to be locked through upon arrival except during the times specified for recreational vessel lockages. At the discretion of the lock operator, recreational vessels may be allowed to lock through with commercial craft. The Corps will consider special lockages, outside the above scheduled lockage times, for flotillas or other unique activities sponsored by yacht clubs, marinas, and other groups, provided advance (at least 24-hours) arrangements have been made with the appropriate control room operator. Everyone in the vessel must be wearing a personal flotation device throughout the duration of the lockage. All vessel owner/operators lock through at their own risk and must follow the directions of the lock operator when using the locks or operating in the vicinity of the locks. The lock operator has final authority on the suitability of a craft for lockage. Please refer to the USACE Safe Lockage Policy for Recreational Craft on the Columbia and Snake Rivers, published separately, for additional safety requirements. For additional information on this matter or copies of the Safe Lockage policy, please contact the Operations Division, at (509) 527-7364.

Charts: 18541 18545 18546 18547 18548

LNM: 20/21

**SNAKE RIVER – LAKE SACAJAWEA AND LAKE HERBERT G. WEST AND LAKE BRYAN – Upstream floating guidewall restrictions (Revised from LNM 24/20)**

Repairs at the Ice Harbor Lock and Dam upstream floating guide wall are now completed, so all restrictions regarding the use of the floating guide wall are now lifted. However, restrictions still apply at the projects listed below:

- Lower Monumental Lock and Dam, Snake River Mile 41.6, vessels may not tie up to or rub against the floating guidewall when approaching or leaving the lock, nor should they use the guidewall as a pivot point for entering the lock.
- Little Goose Lock and Dam, Snake River Mile 70.3, vessels may not tie up to or rub against the upstream floating guidewall when approaching or leaving the lock, nor may they use the guidewall as a pivot for entering the lock.

These restrictions will remain in place until more substantial repairs can be made to the locks' floating guidewall cables. For additional information on this work, contact the NWW Operations Division at (509) 527-7364.

Charts: 18545 18546 18547

LNM: 10/21

**OREGON – WASHINGTON – SAN FRANCISCO TO CAPE FLATTERY – NOAA and Sairdrone joint ocean survey operations**

Sairdrone Inc. is conducting oceanographic and fisheries acoustic surveys in collaboration with NOAA on the west coast of the United States from 07 Jul through 23 Sep 2021. The survey will be conducted by three unmanned surface vehicles, called saildrones, each 23ft in length, orange in color with a white all-round light and marked "SAILDRONE". The Saildrones will deploy from Alameda, CA, and Grays Harbor, WA, conducting coastal and offshore surveys along the coast between Cape Flattery, WA, and Point Conception, CA, to meet research objectives. All drones are uncrewed and windpowered and will have limited maneuverability during survey operations. Mariners are requested to transit areas with caution and to remain greater than 500 meters away from the research equipment. Enclosure (4) of LNM 31/21 provided a photo and a description of the Sairdrone, Questions regarding saildrone operations should be directed to Sairdrone Mission Control, missioncontrol@sairdrone.com or (510) 722-6070.

Chart 18007

LNM: 28/21

**OREGON – CAPE BLANCO TO CAPE FLATTERY – Research operations**

As part of the Ocean Observatories Initiative (OOI), the University of Washington will be recovering and deploying scientific instruments 03 Aug – 31 Aug 2021 off the Oregon coast from the Stonewell Bank area approximately 12 NM off Yaquina Head extending approximately 200 NM westward in the vicinity Brown Bear Seamount. The OOI operations will be performed 24 hours a day from the R/V Thomas G. Thompson with an attached, cabled Remotely Operated Vehicle (ROV) working on the ocean floor. The research vessel will monitor VHF-FM Channel 13 and 16 during all operations. Mariners are requested to keep a 2 NM closest point approach (CPA) in the vicinity of the research vessel to avoid possible entanglement or damage to equipment and/or fishing gear. The approximate dates and locations of the operations are as follows:

- Leg 1
  - 45-56-21.4 N, 129-59-20.0 W on 03 Aug
  - 45-49-49.8 N, 129-45-12.0 W from 03 - 05 Aug
  - 44-31-44.4 N, 125-23-22.8 W from 05 - 07 Aug
  - 44-22-09.6 N, 124-57-15.0 W from 07 - 08 Aug
- Leg 2
  - 44-28-53.4 N, 125-08-54.0 W from 10 - 11 Aug
  - 44-34-11.4 N, 125-08-48.6 W from 12 - 14 Aug
  - 44-22-09.6 N, 124-57-15.0 W on 14 Aug
  - 44-38-14.4 N, 124-18-20.4 W from 14 - 15 Aug
  - 44-29-00.0 N, 125-04-00.0 W from 15 - 16 Aug
- Leg 3
  - 44-31-44.4 N, 125-23-22.8 W from 19 - 21 Aug
- Leg 4
  - 44-22-09.6 N, 124-57-15.0 W on 25 Aug

**OREGON – CAPE BLANCO TO CAPE FLATTERY – Research operations**

45-49-49.8 N, 129-45-12.0 W from 26 - 27 Aug

45-56-21.4 N, 129-59-20.0 W from 27 - 31 Aug

For additional information contact Brian Ittig at bittig@uw.edu

Charts: 18003 18520 18580

LNM: 28/21

**COLUMBIA RIVER – PACIFIC OCEAN TO HARRINGTON POINT - Mouth of the Columbia River Jetty System Major Rehabilitation Project (Revised from LNM 11/21)**

Scheduled repairs of the South Jetty have commenced and are planned to continue through 2024. The 2021 seasonal operations resumed on 05 Apr 2021, and continue into October. The equipment will be working near the observation tower that is located near the root of the jetty. Equipment will be running daylight hours only. A material off load facility has been constructed at the east end of the park; along the Columbia River, near Trestle Bay. The offload mooring barge is in place and has resumed receiving barges. The offload facility has an aerial clearance of approximately 60 ft above the water line. When there is a barge being unloaded a crane will be utilized, the aerial clearance is about 140 ft. The ends of the spuds are painted white for visibility. For questions or additional information please call or email Sherri Brenner at (503) 550-6743 or email Sheri@jemcamis.com, or the project superintendent, Aaron Anderson at (503) 791-2161 or email AAnderson@jemcamis.com.

The jetties at the Columbia River Entrance have suffered severe deterioration and may no longer be correctly represented upon the nautical charts of the area. Mariners should use caution when transiting in the vicinity of the jetties and the river entrance. Repairs of the North jetty were completed in 2019. More information may be found at the USACE Portland District web site: <http://www.nwp.usace.army.mil/jetties/>.

Chart 18521

LNM: 18/21

**COLUMBIA RIVER – VANCOUVER TO BONNEVILLE – Shoaling protruding into Reed Island Reach**

Due to shoaling extending south into the Reed Island Reach Channel south of Reed Island, the US Coast Guard has relocated Reed Island Reach Lighted Buoy 61 (LLNR 11580) to approximate position 45-32-46.318N 122-18-02.052W. This position is near the center of the channel. Vessels transiting Reed Island Reach should navigate on the southern edge of the channel between longitudes 122-17-30.0W and 122-18-25.0W (RM 125+40 to 126+40) and proceed with caution.

Chart 18531

LNM: 30/21

**COLUMBIA RIVER – PASCO TO RICHLAND – Research buoy deployment**

USACE has set a temporary research data collection buoy near the I-182 Highway Bridge (LLNR 13080) at Columbia River mile 336, in approximate position 46-15-49.32 N 119-14-35.61 W. The buoy is yellow, round in shape, with a yellow light flashing every four seconds (Fl 4s) and marked with the word "Research". The buoy will be in place until Sep 2021. For more information, contact Mitch Prince at (509) 527-7606.

Chart 18543

LNM: 21/21

**OREGON – PORT OF PORTLAND – WILLAMETTE RIVER – Geotechnical survey operations**

As part of the Earthquake Ready Burnside Bridge Project, a contractor for Multnomah County will be conducting geotechnical survey operations in the vicinity of the Burnside Highway Bridge (LLNR 14955.4) at Willamette RM 12.4 through 08 Oct 2021. The work will take place on barges controlled by the tug South Creek which will monitor VHF-FM channels 16 and 13. The vessels will work on both the north and the south sides of the bridge, primarily outside of the main navigation channel. Work will be performed Monday-Friday, 0700-1700 daily. Mariners are requested to stay clear of the vessels engaged in this work and minimize their wake. For more information, contact Craig Mark at (360) 772-0916.

Chart 18526

LNM: 30/21

**WASHINGTON – COLUMBIA RIVER TO CAPE FLATTERY – Oceanographic Research**

The Olympic Coast National Marine Sanctuary will be conducting oceanographic research between Makah Bay and Cape Elizabeth from 01 Jun until 01 Oct 2021. The hours of operations for the research vessel Tatoosh will be daylight hours. The R/V Tatoosh will be deploying, and intermittently servicing, ten oceanographic moorings located between Makah Bay and Cape Elizabeth in the following positions:

- MB015 48-19-31.380N 124-40-36.600W
- MB042 48-19-26.280N 124-44-07.380W
- CA015 48-09-58.680N 124-45-24.600W
- CA042 48-09-57.660N 124-49-24.120W
- TH015 47-52-34.020N 124-37-10.080W
- TH042 47-52-34.140N 124-44-00.300W
- KL015 47-36-03.000N 124-25-42.240W
- KL027 47-35-40.440N 124-29-49.440W
- CE015 47-21-24.420N 124-20-53.280W
- CE042 47-21-11.280N 124-29-19.440W

On each mooring, surface gear consists of an 18 foot halibut pole (with flag and RADAR reflector), a 12 inch low-drag surface float (Polyform LD-2), and an 8 meter long Amsteel line attached to sub-surface gear. Sub-surface gear consists of additional line segments, a 14 inch trawl float two meters below mean lower low water, oceanographic instruments, hardware, and an anchor weighing 264 pounds. The anchor consists of four 2.75 inch chain links, connected as two pairs. Mariners are requested to keep a safe distance from the R/V Tatoosh, which will monitor VHF-FM Channels 13 and 16, and can also be reached via phone at (360) 460-5555.

Charts: 18480 18500

LNM: 22/21

**WASHINGTON – APPROACHES TO STRAIT OF JUAN DE FUCA and Entrance – Limited marine services**

Mariners are reminded that due to ongoing COVID-19 restrictions, some tribal and Canadian marinas and boat ramps are closed to the general public. It is highly recommended that boaters verify available services during voyage planning prior to getting underway. Of particular note, the Makah Reservation and Neah Bay remain closed to all visitors, which includes the Makah Marina, boat ramp and fuel sales. For current updates into the closures, please contact the Harbormaster at (360) 645-3015 or the Big Salmon Fishing Resort at (866) 787-1900. Restrictions are also in place at La Push and the Quileute Marina. Fuel sales are available on a case-by-case basis at Quileute, but visitors will be unable to depart their vessel. Mariners are requested to call the Marina ahead of time to verify availability at (360) 374-5392.

Chart 18480

LNM: 16/21

**WASHINGTON – APPROACHES TO STRAIT OF JUAN DE FUCA – Scientific research equipment deployment (Revised from LNM 14/21)**

**WASHINGTON – APPROACHES TO STRAIT OF JUAN DE FUCA – Scientific research equipment deployment (Revised from LNM 14/21)**

The Quileute Tribe Department of Natural Resources has deployed two scientific research buoys offshore of the Washington coast to the WNW of Destruction Island in approximate positions;

(1) 47-46-54.6 N / 124-39-13.8 W

(2) 47-42-54.0 N / 124-43-58.2 W

The buoys are yellow with a yellow light flashing five times with a 15 second off period or FI (5) Y 20s, and are expected to be in place until Oct 2021. Mariners are requested to use caution when operating in the vicinity of these buoys. For more information contact the Quileute Natural Resources, Jennifer Hagen, at (360) 640-4430 or jennifer.hagen@quileutenation.org

Chart 18480

LNM: 25/21

**WASHINGTON – APPROACHES TO STRAIT OF JUAN DE FUCA - SWIFTSURE BANK – ECHO Program 2021 Voluntary Vessel Slowdown at Swiftsure Bank**

Effective 01 Jun 2021, the Enhancing Cetacean Habitat and Observation (ECHO) Program voluntary vessel slowdown in the vicinity of Swiftsure Bank is in effect for all outbound commercial vessels. If it is safe and operationally feasible to do so, commercial vessels are requested to not exceed the following speeds through the water:

11 knots – Bulk carriers, tankers, general cargo vessels, and government vessels

14.5 knots – Vehicle carriers, cruise ships, and container vessels.

The voluntary vessel slowdown takes place in the outbound lane of the vessel traffic separation scheme between Strait of Juan de Fuca TSL Lighted Buoyed JA (LLNR 756) and the end of the traffic separation scheme. Additionally, a speed transition zone is in place, beginning at longitude 124-33-36.860W. The ECHO Program voluntary slowdown aims to reduce underwater noise in known southern resident killer whale feeding areas. This initiative will remain in effect 24 hours per day through 31 Oct 2021. For more detailed information related to this slowdown and the ECHO program, visit the following web address:

<https://www.portvancouver.com/environmental-protection-at-the-port-of-vancouver/maintaining-healthy-ecosystems-throughout-our-jurisdiction/echo-program/projects/swiftsure-bank-slowdown/>

Charts: 18400 18460 18480

LNM: 22/21

**WASHINGTON – STRAIT OF JUAN DE FUCA – Port of Vancouver Canada 2021 Voluntary Lateral Displacement**

As of 01 Jun 2021, the Enhancing Cetacean Habitat and Observation (ECHO) Program voluntary inshore lateral displacement is in effect for all tugs transiting the Canadian inshore area of the Strait of Juan de Fuca. If it is safe and operationally feasible to do so, tugs are requested to move south of the known killer whale feeding area and navigate either through the outbound shipping lane or the inshore lateral displacement zone, while maintaining a buffer distance of 1,000 meters from the traffic separation scheme (TSS). The inshore lateral displacement zone is 1,500 meters wide and occurs in the area between 123-52-21.192 W, 48-18-37.332 N and 124-31-33.378 W, 48-28-53.316 N, covering a distance of approximately 28 NM. The ECHO Program voluntary lateral displacement initiative aims to reduce underwater noise in known southern resident killer whale feeding areas along the northern edge of the Strait of Juan de Fuca. This initiative will remain in effect 24 hours a day through 31 Oct 2021. For more detailed information related to lateral displacement and the ECHO program, visit the following web address:

<https://www.portvancouver.com/environmental-protection-at-the-port-of-vancouver/maintaining-healthy-ecosystems-throughout-our-jurisdiction/echo-program/projects/lateraldisplacement/>

Charts: 18400 18460 18480

LNM: 22/21

**WASHINGTON – PUGET SOUND – ELLIOTT BAY - Colman Dock construction**

Washington State Ferries is conducting demolition and construction operations at the Colman Docks, scheduled to be completed in the summer of 2022. Operations will be conducted from 0700 to 1700, Monday through Friday. Mariners should be aware of marine construction equipment moored around the Colman Dock and regular tows up and down the Duwamish River in support of the operation. Equipment may obstruct small sections of the waterway adjacent to Colman Dock. Water quality monitoring will be taking place during construction operations. Please direct any inquiries to WSF Communications at (206) 402-8070 or email [wsfcomms@wsdot.wa.gov](mailto:wsfcomms@wsdot.wa.gov).

Chart 18450

LNM: 27/17

**WASHINGTON – PUGET SOUND – APPLE COVE TO KEYPORT – Submersible Vehicle testing (Revised from LNM 50/19)**

The Naval Undersea Warfare Center (NUWC) at Keyport, WA will be continuing operations in the vicinity of NUWC between University Point, the Brownsville Marina and Keyport through 23 Dec 2021. Operations will normally be conducted Monday through Friday during daylight hours. Operations will involve semisubmersible and submersible vehicles escorted by a small naval craft with a flashing red light. The small craft will monitor VHF-FM channels 12 and 16. The call sign for the small craft will be "Keyport Range Control". All craft transiting the area are requested to exercise caution and maintain a sharp lookout for possible semi-submerged vehicles while the range is in operation. Questions can be directed to Keyport Range Control on VHF-FM channels 12 and 16 or by contacting the Pacific Northwest Range Management and Ops Division, Range Control Branch, at (360) 396-2313.

Chart 18446

LNM: 49/20

**WASHINGTON – PUGET SOUND – HOOD CANAL – Pier construction**

Manson Construction will be conducting pier demolition and construction activities in Hood Canal on Navy Base Kitsap Bangor from 17 July 2020 through Jun 2022. The project will consist of demolition of existing pier, pile driving and construction of a 500' pier extension. Operations will Monday through Friday 0600 – 1630. There will be a derrick on site and a pile driver barge with multiple barges and a work skiff. Bangor Control Tower will be using VHF-FM channel 88A. Mariners are requested to reduce speed and minimize wake in the area for the safety of the personnel and equipment. For more information contact the US Navy POC Dennis Wiechmann at (360) 315-4084 email [dennis.e.wiechmann@navy.mil](mailto:dennis.e.wiechmann@navy.mil) or the Manson Construction superintendent Brian Dorning at (206) 718-8626.

Charts: 18458 18476

LNM: 28/20

**WASHINGTON – LAKE WASHINGTON SHIP CANAL – LAKE WASHINGTON –Diving operations for underwater sewer line inspection**

King County Department of Natural Resources and Parks, Wastewater Treatment Division will be conducting an inspection of the sewer pipes that lie on the bottom of Lake Washington during the months of July and August 2021. These inspections require diving operations from a barge and boat at multiple locations along the northwest shoreline of Lake Washington from Matthews Beach Park north to approximately 57th Ave NE and NE Bothell Way. The hours of operations for the vessels will typically be weekdays from 0700-1700 but on occasion will go past those hours and some weekends work is possible. Structures that provide access to the maintenance hole may be left in place temporarily and will be marked with buoys and signal lights. For safety of the dive crews, mariners are requested to avoid these work areas and pass a safe distance from all operations.

**WASHINGTON – LAKE WASHINGTON SHIP CANAL – LAKE WASHINGTON –Diving operations for underwater sewer line inspection**

Chart 18447

LNM: 28/21

**WASHINGTON – STRAIT OF JUAN DE FUCA TO STRAIT OF GEORGIA – ANACORTES TO SKAGIT BAY – Sediment cleanup project**

American Construction will conduct dredging and material placement work in Fidalgo Bay, Anacortes WA for a sediment cleanup project from 19 Jul to 27 Nov 2021. The site location is approximately 500 yards south of the Fidalgo Bay Marina near 48-29-39.09 N, 122-35-53.07 W, and operations will occur Monday – Saturday, 24 hours a day. The clamshell dredge Snohomish will work with barges Skagit and/or Dungeness and the barges will be towed to and from the Duwamish River in Seattle, WA and the Whatcom Waterway in Bellingham, WA. The dredge Snohomish can be contacted on VHF-FM Channel 16. For questions or additional information, contact Chris Raymond at (425) 647-1707, or via email at [chrisr@americanconstco.com](mailto:chrisr@americanconstco.com).

Chart 18427

LNM: 28/21

**WEST COAST OF NORTH AMERICA – MEXICAN BORDER TO DIXON ENTRANCE – Haida Gwaii Voluntary Protection Zone for shipping (Revised from LNM 50/20)**

A Voluntary Protection Zone (VPZ) for shipping was established for a 14-month trial period along the west coast of Haida Gwaii by the Government of Canada, the Haida Nation, and multiple maritime and shipping industry partners. The program asks vessels to voluntarily increase the sailing distance off Haida Gwaii when transiting along the west coast of the archipelago. The goal of the VPZ is to reduce the risk of groundings and oil spills, by allowing more time to address any mechanical casualties, and the effectiveness of the VPZ will be assessed during this trial period, which runs until 31 Oct 2021.

In the VPZ, commercial vessels of 500 gross tonnage or greater are asked to observe a minimum distance of 50 nautical miles offshore when transiting along the West Coast of Haida Gwaii with the following exceptions:

- Cruise vessels, to observe a minimum 12 nm distance from shore;
- Vessels transiting between Pacific Northwest ports (Washington, Alaska, and BC), to observe a minimum 25 nm distance from shore;
- Tugs and barges (including pushing and towing alongside) no set minimum distance offshore; and
- Fishing vessels no set minimum distance offshore.

The Voluntary Protection Zone for Shipping coordinates are:

54 13.390N 134 30.543W  
54 15.369N 133 04.908W  
51 56.147N 131 17.856W  
51 24.578N 132 04.088W  
52 18.598N 133 20.921W  
53 11.096N 134 16.363W  
53 43.992N 134 32.625W

For more information, and to download a descriptive brochure, visit [www.haidagwaii-vpz.ca](http://www.haidagwaii-vpz.ca) or email [info@haidagwaii-vpz.ca](mailto:info@haidagwaii-vpz.ca)

Chart 501

LNM: 15/21

**OREGON – WASHINGTON – IDAHO – NOAA's planned cancellation of Paper and Raster nautical charts (Revised from LNM 09/21)**

The National Oceanic and Atmospheric Administration (NOAA) is undertaking a multi-year program to end production and maintenance of its suite of over 1,000 traditional paper nautical charts and all associated raster chart products and services, including: Print-on-Demand (POD) paper nautical charts, Full-size chart PDF files, BookletChart™ PDF files, NOAA raster navigational charts (NOAA RNC®), the NOAA RNC tile service, and the online RNC viewer.

Six months prior to cancellation, a notice of the intent to cancel a specific chart will be provided via a "Last Edition" notice. The final cancellation of a chart will be made via a "Canceled" notice. Both types of notices will appear in LNM Section IV, "Chart Correction." A comprehensive list of all cancelled NOAA charts is available at: <http://www.charts.noaa.gov/MCD/Dole.shtml>.

Traditional paper nautical chart production is ending to enable the creation and maintenance of larger scale, more up-to-date, higher quality coverage of NOAA's electronic navigational chart (NOAA ENC®) product. This will significantly enhance the amount of charted detail available to mariners. More information about NOAA's program to sunset traditional paper charts is on the NOAA Coast Survey website at: <https://nauticalcharts.noaa.gov/charts/farewell-to-traditional-nautical-charts.html>. An online NOAA Custom Chart application at: <https://devgis.charttools.noaa.gov/pod> is available to create chart images from ENC data, which may then be printed. Notices to Mariners will not be issued for NOAA Custom Charts.

LNM: 10/21

**OREGON – WASHINGTON – IDAHO – US Coast Guard 13th District Broadcast Notice to Mariners availability**

The U.S. Coast Guard Navigation Center (NAVCEN) has completed its Maritime Safety Information (MSI) project upgrade in the Pacific Northwest to offer Broadcast Notice to Mariners (BNM) to mariners via email in addition to voice radio broadcasts. The online subscription service is in addition to the standard BNM broadcasts over VHF radio that previously were the only way to receive this vital navigational information. Mariners can now use the subscription service to plan for underway periods and receive updates to navigational hazards in near real time without having to wait on scheduled VHF broadcasts. Mariners who operate in Oregon and Washington and up the Columbia and Snake Rivers system should visit the NAVCEN website and subscribe for email delivery of BNMs. <https://www.navcen.uscg.gov/?pageName=feeds> BNMs are organized by Coast Guard Sector and mariners can subscribe to one, two or all three Coast Guard Sectors within the 13th District area:

- Sector North Bend – the southern and central Oregon coast and rivers
- Sector Columbia River – the northern Oregon coast, southern and central Washington coast, the Columbia, Snake and Willamette Rivers
- Sector Puget Sound – the northern Washington coast, Strait of Juan de Fuca, the San Juan Islands and neighboring straits, Puget Sound and Lake Washington

Additionally, NAVCEN has developed an online BNM archive that is highly filterable and available to the public. 13th District BNMs can be viewed and downloaded from this database on the NAVCEN website at: <https://www.navcen.uscg.gov/bnm/messages/DistrictSearchV1.php?d=13&i=3>.

For any questions regarding these new services in the 13th District, please contact the office of Waterways Management at (206) 220-7280 or [D13-SMB-D13-LNM@uscg.mil](mailto:D13-SMB-D13-LNM@uscg.mil)

LNM: 12/21

**SECTION VIII - LIGHT LIST CORRECTIONS**

An Asterisk \*, indicates the column in which a correction has been made to new information

| (1)<br>No. | (2)<br>Name and Location      | (3)<br>Position                      | (4)<br>Characteristic | (5)<br>Height | (6)<br>Range | (7)<br>Structure               | (8)<br>Remarks |
|------------|-------------------------------|--------------------------------------|-----------------------|---------------|--------------|--------------------------------|----------------|
| 9690       | YAQUINA RIVER LIGHT 20        | 44-35-23.582N<br>124-01-22.637W      | Fl R 4s               | 16            | 4            | TR on pile.                    | 34/21          |
| 9695       | Yaquina River Daybeacon<br>21 | *<br>44-35-12.195N<br>124-01-17.963W |                       |               |              | SG on pile.                    | 34/21          |
| 9710       | YAQUINA RIVER LIGHT 25        | *<br>44-34-59.560N<br>124-00-44.522W | Fl G 4s               | 16            | 4            | SG on pile.*                   | *<br>34/21     |
| 9716       | Yaquina River Daybeacon<br>26 | *<br>44-34-47.525N<br>124-00-07.512W |                       |               |              | TR on pile.                    | 34/21          |
| 9720       | Yaquina River Daybeacon<br>28 | *<br>44-34-29.781N<br>123-59-16.338W |                       |               |              | TR on pile.                    | 34/21          |
| 9725       | Yaquina River Daybeacon<br>30 | *<br>44-34-18.054N<br>123-58-43.470W |                       |               |              | TR on pile.                    | 34/21          |
| 9735       | Yaquina River Daybeacon<br>31 | *<br>44-34-21.250N<br>123-58-06.342W |                       |               |              | SG on pile.                    | 34/21          |
| 9740       | YAQUINA RIVER LIGHT 32        | *<br>44-34-17.429N<br>123-58-00.382W | Fl R 4s               | 16            | 4            | TR on multi-pile<br>structure. | 34/21          |
| 9743       | Yaquina River Daybeacon<br>34 | *<br>44-34-41.073N<br>123-57-53.277W |                       |               |              | TR on pile.                    | 34/21          |
| 9750       | YAQUINA RIVER LIGHT 38        | *<br>44-35-04.343N<br>123-57-29.209W | Fl R 2.5s             | 16            | 4            | TR on pile.                    | 34/21          |
| 9760       | Yaquina River Daybeacon<br>43 | *<br>44-35-22.319N<br>123-56-24.561W |                       |               |              | SG on pile.                    | 34/21          |
| 9770       | Yaquina River Daybeacon<br>45 | *<br>44-35-39.332N<br>123-56-15.521W |                       |               |              | SG on pile.                    | 34/21          |
|            |                               | *                                    |                       |               |              |                                |                |

---

---

## ENCLOSURES

---

### Enclosure 1

OREGON - WASHINGTON - IDAHO - MONTANA - Summary of Bridge Lighting Discrepancies and Corrections

LNLM: 34/21

### Enclosure 2

OREGON - WASHINGTON - COLUMBIA RIVER - Summary of Dredging Operations

LNLM: 34/21

### Enclosure 3

OREGON - WASHINGTON - COLUMBIA RIVER - Summary of Marine Events

LNLM: 34/21

### Enclosure 4

OREGON - WASHINGTON - Pacific Coast Port Access Route Study

LNLM: 33/21

---

---

If you have any questions, comments, or need additional information concerning this or other LNMs (e.g. additions, deletions, corrections) contact the address or phone number on the front page.

CDR Brendan J. Harris  
Chief, Waterways Management Branch  
Thirteenth Coast Guard District

# BRIDGE DISCREPANCIES AND CORRECTIONS

Enclosure (1)

| BRIDGE DISCREPANCIES    |            |                                |               |   |               |         |
|-------------------------|------------|--------------------------------|---------------|---|---------------|---------|
| Waterway                | Light List | Bridge Name                    | Location      | Status  | Date Reported | BNM     |
| <b>OREGON COAST</b>     |            |                                |               |   |               |         |
|                         | 9125       | Chandler Highway Bridge        | Coos Bay, OR  | East center channel green light extinguished        | 10/27/2020    | 0757-20 |
|                         | 9367       | Reedsport Highway 101 Bridge   | Reedsport, OR | Multiple Lights extinguished                        | 10/27/2020    | 0756-20 |
| <b>COLUMBIA RIVER</b>   |            |                                |               |   |               |         |
|                         | 13027      | Kalan Railroad Bridge          | Kalan, WA     | Western, upstream pier light extinguished           | 7/16/2021     | 0478-21 |
| <b>SNAKE RIVER</b>      |            |                                |               |   |               |         |
|                         | 13617      | Sergeant Railroad Bridge       | Starbuck, WA  | All pier lights are extinguished                    | 10/24/2020    | 0744-20 |
| <b>WILLAMETTE RIVER</b> |            |                                |               |   |               |         |
|                         | None       |                                |               |   |               |         |
| <b>WASHINGTON COAST</b> |            |                                |               |   |               |         |
|                         | None       |                                |               |   |               |         |
| <b>PUGET SOUND</b>      |            |                                |               |   |               |         |
|                         | 16870.1    | Spokane Street Bridge          | Seattle, WA   | NE Lighted Approach Dolphin destroyed               | 3/5/2021      | 0207-21 |
|                         | 19155.3    | Duane Berentsen Highway Bridge | Swinomish, WA | Center span lighting on Westbound span extinguished | 8/19/2021     | 0556-21 |
| <b>IDAHO</b>            |            |                                |               |   |               |         |
|                         | None       |                                |               |   |               |         |
| BRIDGE CORRECTIONS      |            |                                |               |   |               |         |
| Waterway                | Light List | Bridge Name                    | Location      | Status  | Date Reported | BNM     |
| <b>OREGON COAST</b>     |            |                                |               |   |               |         |
|                         | None       |                                |               |   |               |         |
| <b>COLUMBIA RIVER</b>   |            |                                |               |   |               |         |
|                         | None       |                                |               |   |               |         |
| <b>SNAKE RIVER</b>      |            |                                |               |   |               |         |
|                         | None       |                                |               |   |               |         |
| <b>WILLAMETTE RIVER</b> |            |                                |               |   |               |         |
|                         | None       |                                |               |   |               |         |
| <b>WASHINGTON COAST</b> |            |                                |               |   |               |         |
|                         | None       |                                |               |   |               |         |
| <b>PUGET SOUND</b>      |            |                                |               |   |               |         |
|                         | None       |                                |               |   |               |         |
| <b>IDAHO</b>            |            |                                |               |   |               |         |
|                         | None       |                                |               |   |               |         |



**Dredging operations are scheduled or in progress at the following locations:**

| Start Date | End Date  | Times           | Location  | Dredge Vessel   | Assist Vessel                 | Channel monitored  | Disposal Area       | LNМ   |
|------------|-----------|-----------------|---|-----------------|-------------------------------|--------------------|---------------------|-------|
| 1-Sep-21   | 8-Sep-21  | 24 Hrs / 7 Days | Port Orford Oregon  | M/V Heidi Renee | Swan Island, James T          | VHF-FM 14, 16 & 72 | TBD                 | 34/21 |
| 25-Aug-21  | 2-Sep-21  | 24 Hrs/7 Days   | Coquille River; Entrance (RM 0-10 to 0+35)                                | M/V Yaquina     | None                          | VHF-FM 13 & 16     | ODMDS               | 34/21 |
| 25-Aug-21  | 2-Sep-21  | 24 Hrs/7 Days   | Umpqua River; Entrance (RM -1-15 to 0+45)                                 | M/V Yaquina     | None                          | VHF-FM 13 & 16     | NUROS 0.8-IW (FWB)  | 34/21 |
| 25-Aug-21  | 2-Sep-21  | 24 Hrs/7 Days   | Umpqua River, Salmon Harbor Reach (RM 1+00 to 1+40)                       | M/V Yaquina     | None                          | VHF-FM 13 & 16     | NUROS 0.8-IW (FWB)  | 34/21 |
| 25-Aug-21  | 2-Sep-21  | 24 Hrs/7 Days   | Umpqua River; Barrets Range (RM 4+00 to 5+20)                             | M/V Yaquina     | None                          | VHF-FM 13 & 16     | NUROS 0.8-IW (FWB)  | 34/21 |
| 25-Aug-21  | 2-Sep-21  | 24 Hrs/7 Days   | Siuslaw River (RM 0-40 to 0+35)   | M/V Yaquina     | None                          | VHF-FM 13 & 16     | NSROS               | 34/21 |
| 25-Aug-21  | 2-Sep-21  | 24 Hrs/7 Days   | Coos Bay (RM 2+00 to 3+30; 6+00 to 7+30; 9+05 to 10+10, 10+20 to 11+40)   | M/V Yaquina     | None                          | VHF-FM 13 & 16     | Site F-NS & Site G  | 34/21 |
| 8-Sep-21   | 17-Sep-21 | 24 Hrs / 7 Days | Yaquina Bay; ODMDS North and South (Hydrographic Survey)                  | R/V Zephyr      | None                          | VHF-FM 13 & 16     | N/A                 | 34/21 |
| 22-Aug-21  | 2-Sep-21  | 24 Hrs / 7 Days | Yaquina Bay; Entrance (RM 0-50 to 0+50)                                   | M/V Yaquina     | None                          | VHF-FM 13 & 16     | YBOS (N) & YBOS (S) | 34/21 |
| 22-Aug-21  | 2-Sep-21  | 24 Hrs / 7 Days | Yaquina Bay Harbor (RM 1+15 to 2+00)                                      | M/V Yaquina     | None                          | VHF-FM 13 & 16     | YBOS (N) & YBOS (S) | 34/21 |
| 21-Aug-21  | 30-Sep-21 | 24 Hrs / 7 Days | Columbia River; Entrance  | M/V Essayons    | None                          | VHF-FM 13 & 16     | SJS, SWS, DWS       | 34/21 |
| 21-Aug-21  | 30-Sep-21 | 24 Hrs / 7 Days | Columbia River; Tongue Point (RM 18+20 to 19+30) (foul wx backup for MCR) | M/V Essayons    | None                          | VHF-FM 13 & 16     | RM 5 WA side        | 34/21 |
| 5-Aug-21   | 14-Sep-21 | 24 Hrs / 7 Days | Columbia River; Miller Sands (RM 21+20 to 22+00, 23+20 to 24+10)          | M/V Oregon      | Clackamas, Ivanhoff, Williams | VHF-FM 13 & 16     | TBD                 | 33/21 |
| 14-Sep-21  | 20-Sep-21 | 24 Hrs / 7 Days | Columbia River; Pillar Rock (RM 27+40 to 29+00)                           | M/V Oregon      | Clackamas, Ivanhoff, Williams | VHF-FM 13 & 16     | TBD                 | 33/21 |
| 20-Sep-21  | 11-Oct-21 | 24 Hrs / 7 Days | Columbia River; Puget Island (RM 44+10 to 44+30)                          | M/V Oregon      | Clackamas, Ivanhoff, Williams | VHF-FM 13 & 16     | TBD                 | 21/21 |
| 14-Oct-21  | 12-Nov-21 | 24 Hrs / 7 Days | Columbia River; Stella Range (RM 56+00 to 57+00)                          | M/V Oregon      | Clackamas, Ivanhoff, Williams | VHF-FM 13 & 16     | TBD                 | 21/21 |
| 16-Nov-21  | 8-Dec-21  | 24 Hrs / 7 Days | Columbia River; Howard Island (RM 69+10 to 70+10)                         | M/V Oregon      | Clackamas, Ivanhoff, Williams | VHF-FM 13 & 16     | TBD                 | 21/21 |

**OREGON - COLUMBIA RIVER - WASHINGTON DREDGING OPERATIONS**

Enclosure (2)

|           |           |                    |   |                  |                                   |                       |                              |       |
|-----------|-----------|--------------------|---|------------------|-----------------------------------|-----------------------|------------------------------|-------|
| 22-Jul-21 | 25-Sep-21 | 24 Hrs /<br>7 Days | Grays Harbor; Crossover<br>Channel                    | M/V Sea<br>Horse | Rachele<br>WJ Marston<br>Robert L | VHF-FM 13,<br>16 & 67 | Pt Chehalis/<br>S Jetty Site | 31/21 |
| 19-Jul-21 | 27-Nov-21 | 24 Hrs /<br>7 Days | Anacortes; Fidalgo Bay<br>48-29-39.1 N, 122-35-53.1 W | M/V<br>Snohomish | Skagit,<br>Dungeness              | VHF-FM 13<br>&16      | Duwamish                     | 28/21 |

**Mariners are advised that the start and ending dates for dredging activities may vary due to unforeseen on-site conditions, such as gill net fishing, weather and other factors.**

**USACE dredges request mariners transit at their slowest safe speed to minimize wake when in the vicinity of a dredge and proceed with caution after making passing arrangements. Vessel(s) and/or equipment may encroach into the channel.**

# MARINE EVENTS

Enclosure (3)

## SECTOR COLUMBIA RIVER MARINE EVENTS

| EVENT DATE | TIME      | EVENT NAME                                | EVENT LOCATION   |
|------------|-----------|---|--|
| 27-Aug-21  | 0800-1700 | Kiteboard 4 Cancer                        | Columbia River, Hood River, OR   |
| 28-Aug-21  | 0900-1700 | Thunder on the Snake                      | Snake River from Lewiston to Bear Bar                                  |
| 28-Aug-21  | 0800-1700 | Kiteboard 4 Cancer                        | Columbia River, Hood River, OR   |
| 29-Aug-21  | 0900-1700 | Thunder on the Snake                      | Snake River from Lewiston to Bear Bar                                  |
| 29-Aug-21  | 0800-1700 | Kiteboard 4 Cancer                        | Columbia River, Hood River, OR   |
| 4-Sep-21   | 2130-2200 | Oregon Symphony Concert Fireworks Display | Willamette River, Hawthorne to Marquam Bridges, Portland, OR           |
| 11-Sep-21  | 0930-1100 | Fireworks on the Bay                      | Eastside, Coos Bay, OR   |
| 12-Sep-21  | 0730-1330 | 10th Annual Rose City SUP Classic         | Willamette River, Ross Island, Portland, OR                            |
| 18-Sep-21  | 0730-1730 | LOCR Willamette River Regatta             | Willamette River, George Rogers Park to Hog Island, Portland, OR       |
| 19-Sep-21  | 0730-1730 | LOCR Willamette River Regatta             | Willamette River, George Rogers Park to Willamette Falls, Portland, OR |
| 22-Sep-21  | 0730-1430 | Columbia River Splash                     | Columbia River, South of Lemon Island, Portland, OR                    |
| 3-Oct-21   | 0700-1330 | Head of the Dog Rowing Regatta            | Willamette River, Hadley's Landing, Portland, OR                       |
| 8-Oct-21   | 1200-1700 | Lumpy Waters Sea Kayak Symposium          | Pacific City, Oregon   |
| 9-Oct-21   | 1200-1700 | Lumpy Waters Sea Kayak Symposium          | Pacific City, Oregon   |
| 10-Oct-21  | 1200-1700 | Lumpy Waters Sea Kayak Symposium          | Pacific City, Oregon   |
| 31-Oct-21  | 1830-2000 | Oaks Park Halloween Fireworks Display     | Willamette River, Near Oaks Park, Portland, OR                         |
|            |           |   |  |

## SECTOR PUGET SOUND MARINE EVENTS

| EVENT DATE | TIME      | EVENT NAME                                 | EVENT LOCATION                            |
|------------|-----------|--|---|
| 25-Aug-21  | 1830-2130 | CYCT Windseekers Wednesday Night Races     | Commencement Bay                          |
| 25-Aug-21  | 1700-2100 | CYCS Sound Wednesday                       | Shilshole Bay                             |
| 25-Aug-21  | 1700-2100 | CYCS Lake Wednesday Evening Series         | East of Leschi Marina Lake Washington     |
| 25-Aug-21  | 1800-2100 | AYC Wednesday Night Race                   | Fidalgo Bay                               |
| 26-Aug-21  | 1700-2100 | CYCS Sound Thursday                        | Shilshole Bay                             |
| 26-Aug-21  | 1700-1930 | SBYC Duck Dodge Series                     | Sequim Bay                                |
| 27-Aug-21  | 1800-2100 | WSCYC Fall Friday Night Series             | Between Brownsville Marina and Bainbridge |
| 28-Aug-21  | 1200-1600 | Milltown Autumn Race Series                | Possession Sound                          |
| 28-Aug-21  | 1300-2000 | SYC Northwest Jr. Olympics Sailing Regatta | Shilshole Bay                             |
| 28-Aug-21  | 1100-1500 | BYC Pink Boat Regatta                      | Bellingham Bay                            |
| 28-Aug-21  | 1000-1800 | STYC Single Handed Race                    | Between Shilshole Bay and Port Madison    |
| 28-Aug-21  | 1100-1730 | SBYC Saturday Series                       | Outside Sequim Bay                        |
| 28-Aug-21  | 1200-1600 | CYCT Awards Race                           | Commencement Bay                          |
| 28-Aug-21  | 1200-1530 | Paddle Poulsbo                             | Liberty Bay                               |
| 29-Aug-21  | 1300-1700 | SBYC Transpuget Benefit Race               | Shilshole Bay                             |
| 30-Aug-21  | 1800-2030 | STYC Ballard Cup Series III                | Shilshole Bay                             |
| 31-Aug-21  | 1700-2100 | CYCS Lake Tuesday Evening Series           | East of Leschi Marina Lake Washington     |

# MARINE EVENTS

Enclosure (3)

|           |           |  |                                       |
|-----------|-----------|--|---------------------------------------|
| 31-Aug-21 | 1800-2200 | Duck Dodge                             | Lake Union                            |
| 1-Sep-21  | 1830-2130 | CYCT Windseekers Wednesday Night Races | Commencement Bay                      |
| 1-Sep-21  | 1700-2100 | CYCS Sound Wednesday                   | Shilshole Bay                         |
| 1-Sep-21  | 1700-2100 | CYCS Lake Wednesday Evening Series     | East of Leschi Marina Lake Washington |
| 1-Sep-21  | 1800-2100 | AYC Wednesday Night Race               | Fidalgo Bay                           |
|           |           |  |                                       |

## U.S. COAST GUARD

## PACIFIC COAST – PORT ACCESS ROUTE STUDY (PAC-PARS)

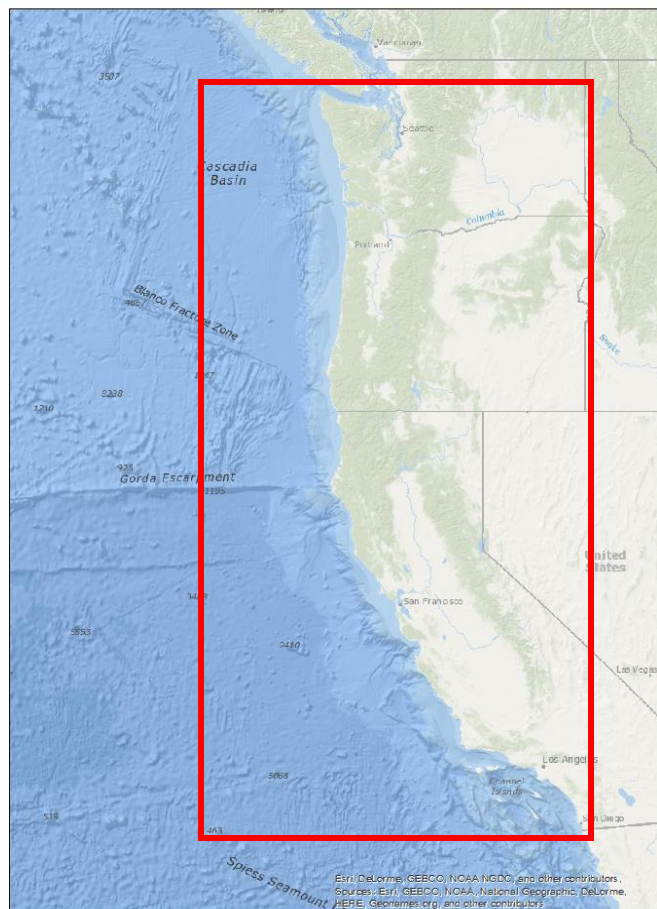
## What is the PAC-PARS?

The Pacific Port Access Route Study (PAC-PARS) will be the first comprehensive evaluation of maritime traffic patterns along the Pacific Coast bordering California, Oregon, and Washington.

Vessel traffic, offshore renewable energy, aquafarms, as well as commercial and government space launching activities are some of the maritime related changes occurring along the Pacific Coast.

The U.S. Coast Guard (USCG) is conducting this study to evaluate the usage of coastal waterways, including the navigational conditions for coastal and outer-continental shelf transits.

The study will provide a baseline to assist with future determinations regarding the suitability of waterways for current and future maritime activities and if existing routing measures are adequate.



Access to the study can be found by scanning the QR Code at the bottom of this flyer, or visit:

<https://www.regulations.gov>

And search the docket number:

**“USCG-2021-0345”**

Questions or concerns can be sent to:

**PACPARS@USCG.MIL**

**Please submit all official comments to the docket above. Comments and related material must be received on or before 25 January, 2022.**

