

U.S. Department of
Homeland Security

United States
Coast Guard



LIGHT LIST

Volume I

ATLANTIC COAST

St. Croix River, Maine to Shrewsbury River, New Jersey

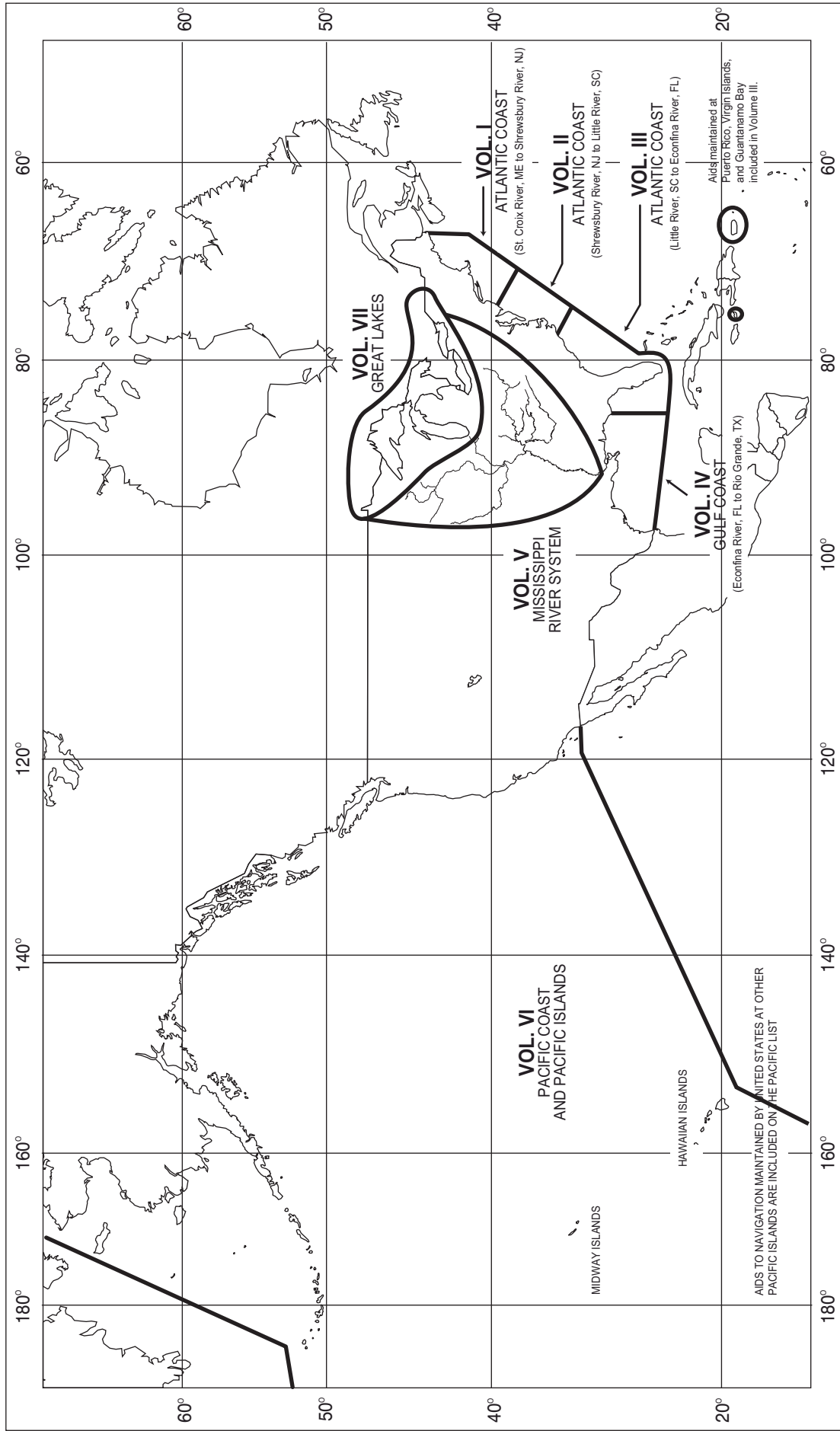
This Light List contains a list of lights, sound signals, buoys, daybeacons, and other aids to navigation.

IMPORTANT
THIS LIGHT LIST SHOULD BE CORRECTED
EACH WEEK FROM THE LOCAL NOTICES TO MARINERS
OR NOTICES TO MARINERS AS APPROPRIATE.

2018

COMDTPUB P16502.1

LIMITS OF LIGHT LISTS PUBLISHED BY
U.S. COAST GUARD





U.S. AIDS TO NAVIGATION SYSTEM

on navigable waters except Western Rivers

LATERAL SYSTEM AS SEEN ENTERING FROM SEAWARD

<p>PORT SIDE ODD NUMBERED AIDS</p> <p>GREEN LIGHT ONLY FLASHING (2) FLASHING OCCULTING QUICK FLASHING ISO</p>	<p>PREFERRED CHANNEL NO NUMBERS - MAY BE LETTERED</p> <p>PREFERRED CHANNEL TO STARBOARD TOPMOST BAND GREEN</p> <p>GREEN LIGHT ONLY</p> <p>COMPOSITE GROUP FLASHING (2+1)</p>	<p>PREFERRED CHANNEL NO NUMBERS - MAY BE LETTERED</p> <p>PREFERRED CHANNEL TO PORT TOPMOST BAND RED</p> <p>RED LIGHT ONLY</p> <p>COMPOSITE GROUP FLASHING (2+1)</p>	<p>STARBOARD SIDE EVEN NUMBERED AIDS</p> <p>RED LIGHT ONLY FLASHING (2) FLASHING OCCULTING QUICK FLASHING ISO</p>
---	--	---	---

AIDS TO NAVIGATION HAVING NO LATERAL SIGNIFICANCE

<p>ISOLATED DANGER NO NUMBERS - MAY BE LETTERED</p> <p>WHITE LIGHT ONLY</p> <p>FI (2) 5s</p>	<p>SAFE WATER NO NUMBERS - MAY BE LETTERED</p> <p>WHITE LIGHT ONLY MORSE CODE</p> <p>Mo (A)</p>
<p>RANGE DAYBOARDS MAY BE LETTERED</p>	
<p>DAYBOARDS - MAY BE LETTERED</p> <p>WHITE LIGHT ONLY</p>	<p>SPECIAL MARKS - MAY BE LETTERED</p> <p>YELLOW LIGHT ONLY FIXED FLASHING</p> <p>SHAPE OPTIONAL—BUT SELECTED TO BE APPROPRIATE FOR THE POSITION OF THE MARK IN RELATION TO THE NAVIGABLE WATERWAY AND THE DIRECTION OF BUOYAGE.</p>

Aids to Navigation marking the Intracoastal Waterway (ICW) display unique yellow symbols to distinguish them from aids marking other waters. Yellow triangles indicate aids should be passed by keeping them on the starboard (right) hand of the vessel. Yellow squares indicate aids should be passed by keeping them on the port (left) hand of the vessel. A yellow horizontal band provides no lateral information, but simply identifies aids as marking the ICW.

TYPICAL INFORMATION AND REGULATORY MARKS

INFORMATION AND REGULATORY MARKERS

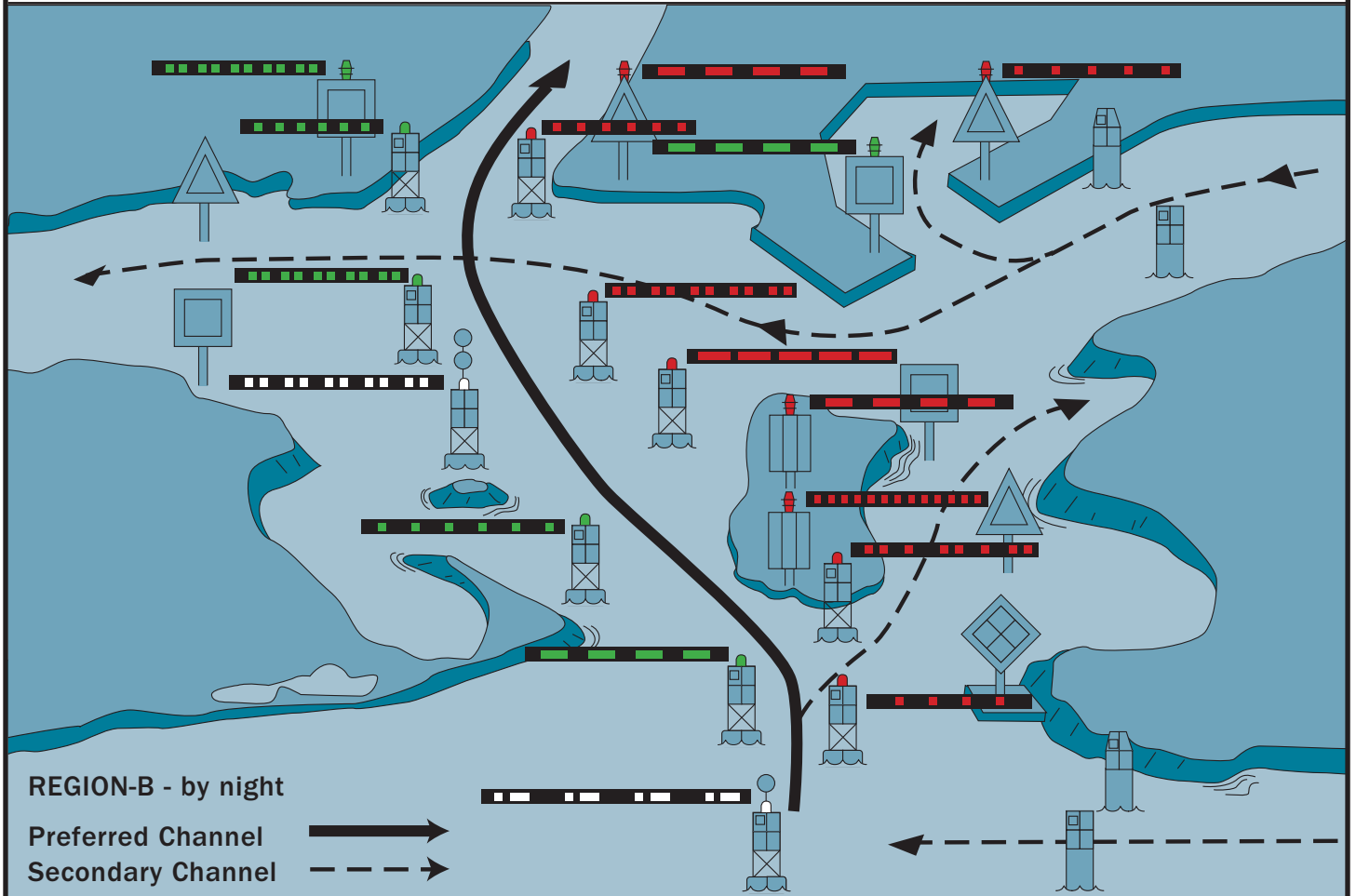
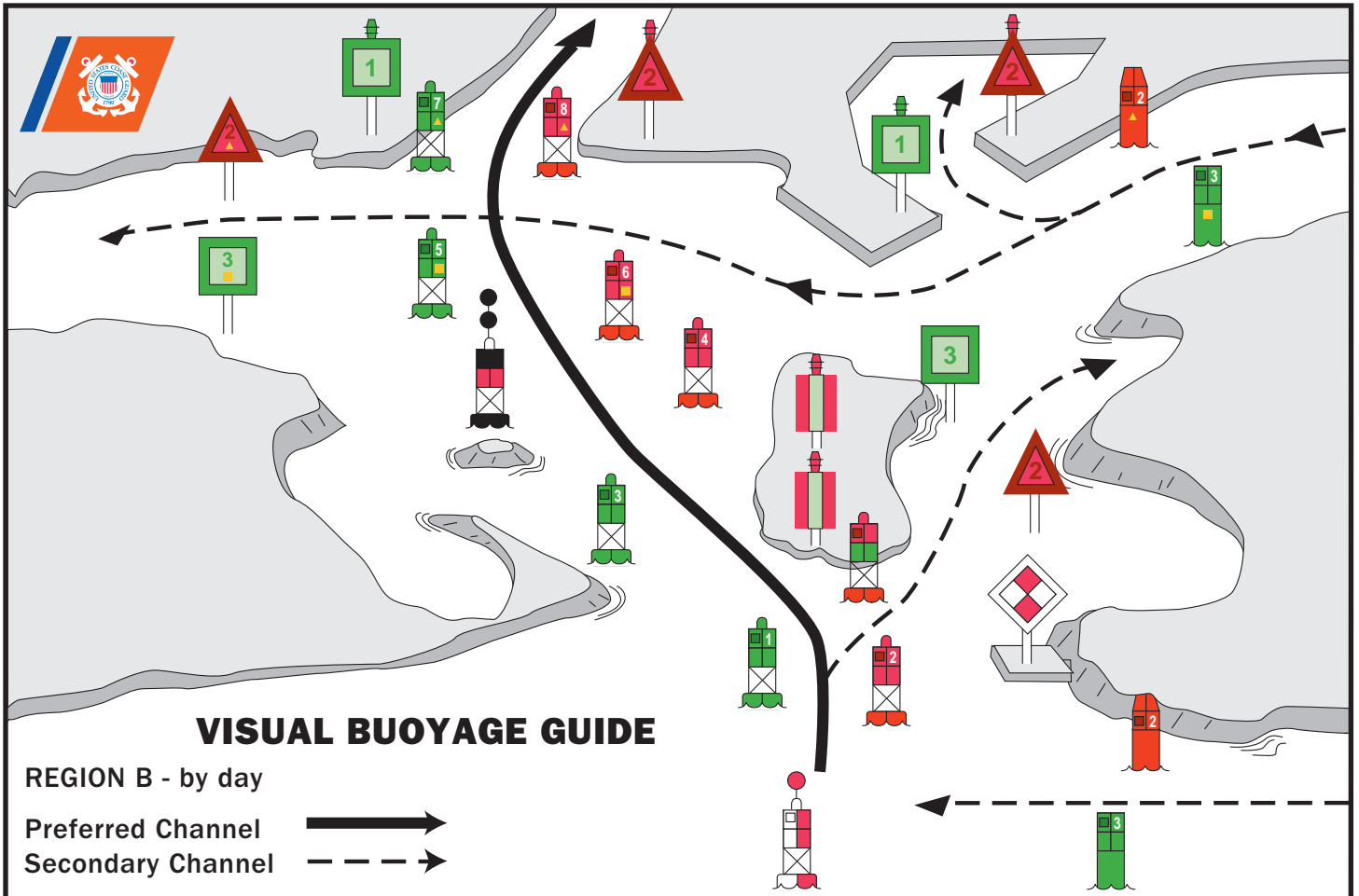
WHEN LIGHTED, INFORMATION AND REGULATORY MARKS MAY DISPLAY ANY WHITE LIGHT RHYTHM EXCEPT QUICK FLASHING, Mo(A), AND FLASHING (2)

EXPLANATION MAY BE PLACED OUTSIDE THE CROSSED DIAMOND SHAPE, SUCH AS DAM, RAPIDS, SWIM AREA, ETC.

THE NATURE OF DANGER MAY BE INDICATED INSIDE THE DIAMOND SHAPE, SUCH AS ROCK, WRECK, SHOAL, DAM, ETC.

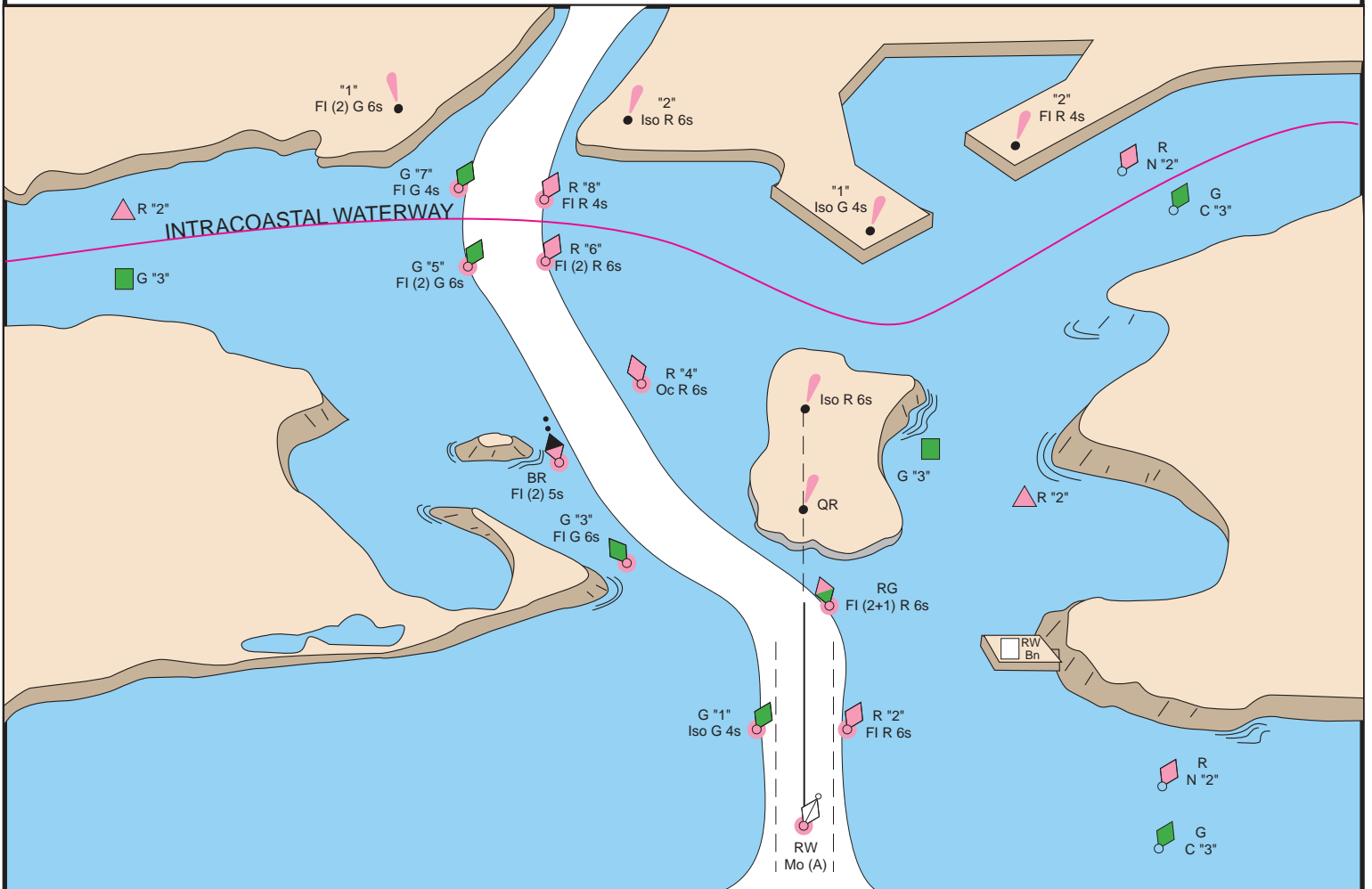
TYPE OF CONTROL IS INDICATED IN THE CIRCLE, SUCH AS SLOW, NO WAKE, ANCHORING, ETC.

FOR DISPLAYING INFORMATION SUCH AS DIRECTIONS, DISTANCES, LOCATIONS, ETC.





FICTITIOUS NAUTICAL CHART





U.S. AIDS TO NAVIGATION SYSTEM

on the Western River System

AS SEEN ENTERING FROM SEAWARD

<p>PORT SIDE OR RIGHT DESCENDING BANK</p> <p>GREEN OR WHITE LIGHTS</p> <p>FLASHING ISO</p> <p>LIGHT LIGHTED BUOY CAN</p> <p>SG CNG</p> <p>PASSING DAYBEACON CROSSING DAYBEACON</p> <p>176.9 MILE BOARD</p>	<p>PREFERRED CHANNEL MARK JUNCTIONS AND OBSTRUCTIONS COMPOSITE GROUP FLASHING (2+1)</p> <p>PREFERRED CHANNEL TO STARBOARD TOPMOST BAND GREEN FI (2+1) G</p> <p>PREFERRED CHANNEL TO PORT TOPMOST BAND RED FI (2+1) R</p> <p>JG JR</p> <p>DAYBOARDS HAVING NO LATERAL SIGNIFICANCE</p> <p>MAY BE LETTERED WHITE LIGHT ONLY</p> <p>NB</p>	<p>STARBOARD SIDE OR LEFT DESCENDING BANK</p> <p>RED OR WHITE LIGHTS</p> <p>FLASHING (2) ISO</p> <p>LIGHT LIGHTED BUOY NUN</p> <p>MAY BE LIGHTED TR CNR</p> <p>PASSING DAYBEACON CROSSING DAYBEACON</p> <p>123.5 MILE BOARD</p>
---	---	--

SPECIAL MARKS--MAY BE LETTERED

SHAPE: OPTIONAL--BUT SELECTED TO BE APPROPRIATE FOR THE POSITION OF THE MARK IN RELATION TO THE NAVIGABLE WATERWAY AND THE DIRECTION OF BUOYAGE.

YELLOW LIGHT ONLY
FIXED FLASHING

MOORING BUOY
WHITE WITH BLUE BAND
MAY SHOW WHITE REFLECTOR OR LIGHT

TYPICAL INFORMATION AND REGULATORY MARKS
INFORMATION AND REGULATORY MARKERS

WHEN LIGHTED, INFORMATION AND REGULATORY MARKS MAY DISPLAY ANY LIGHT RHYTHM EXCEPT QUICK FLASHING, Mo(a) AND FLASHING (2)

NW WHITE LIGHT ONLY

BOAT EXCLUSION AREA

DANGER

CONTROLLED AREA

INFORMATION

BUOY USED TO DISPLAY REGULATORY MARKERS

MAY SHOW WHITE LIGHT
MAY BE LETTERED

EXPLANATION MAY BE PLACED OUTSIDE THE CROSSED DIAMOND SHAPE, SUCH AS DAM, RAPIDS, SWIM AREA, ETC.

THE NATURE OF DANGER MAY BE INDICATED INSIDE THE DIAMOND SHAPE, SUCH AS ROCK, WRECK, SHOAL, DAM, ETC.

TYPE OF CONTROL IS INDICATED IN THE CIRCLE, SUCH AS SLOW, NO WAKE, ANCHORING, ETC.

STATE WATERS

INLAND (STATE) WATERS OBSTRUCTION MARK
MAY SHOW WHITE REFLECTOR OR QUICK FLASHING WHITE LIGHT

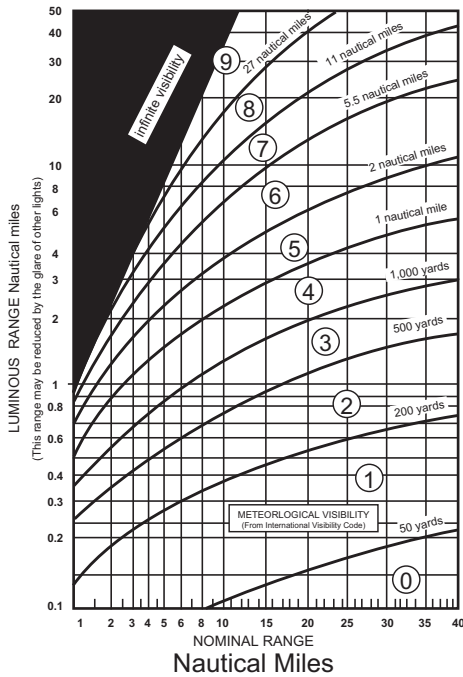
BLACK-STRIPED WHITE BUOY

Used to indicate an obstruction to navigation, extends from the nearest shore to the buoy. This means "do not pass between the buoy and the nearest shore." This aid is replacing the red and white striped buoy within the USWMS, but cannot be used until all red and white striped buoys on a waterway have been replaced.

LUMINOUS RANGE DIAGRAM

The nominal range given in this Light List is the maximum distance a given light can be seen when the meteorological visibility is 10 nautical miles. If the existing visibility is less than 10 NM, the range at which the light can be seen will be reduced below its nominal range. And, if the visibility is greater than 10 NM, the light can be seen at greater distances. The distance at which a light may be expected to be seen in the prevailing visibility is called its luminous range.

This diagram enables the mariner to determine the approximate luminous range of a light when the nominal range and the prevailing meteorological visibility are known. The diagram is entered from the bottom border using the nominal range listed in column 6 of this book. The intersection of the nominal range with the appropriate visibility curve (or, more often, a point between two curves) yields, by moving horizontally to the left border, the luminous range.



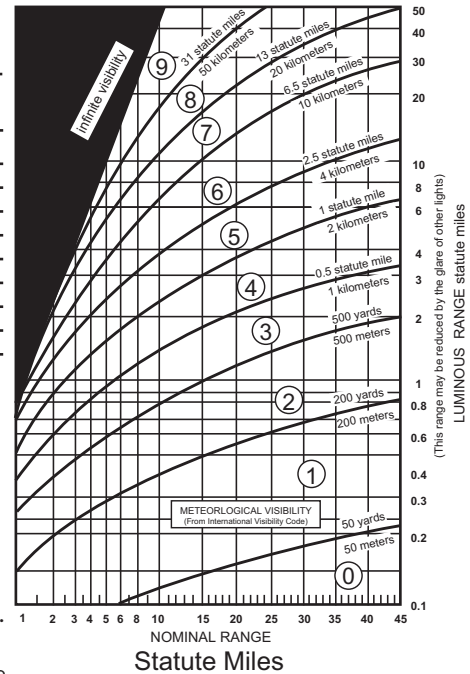
METEOROLOGICAL VISIBILITY
(From International Visibility Code)

Code	Metric	Nautical (approximate)
0	less than 50 meters	less than 50 yards
1	50-200 meters	50-200 yards
2	200-500 meters	200-500 yards
3	500-1,000 meters	500-1,000 yards
4	1-2 kilometers	1,000-2,000 yards
5	2-4 kilometers	1-2 nautical miles
6	4-10 kilometers	2-5.5 nautical miles
7	10-20 kilometers	5.5-11 nautical miles
8	20-50 kilometers	11-27 nautical miles
9	greater than 50 km	greater than 27 nm

CAUTION

When using this diagram it must be remembered that:

1. The ranges obtained are approximate.
2. The transparency of the atmosphere may vary between observer and light.
3. Glare from background lighting will reduce the range that lights are sighted.
4. The rolling motion of a vessel and/or of a lighted aid may reduce the distance that lights can be detected or identified.



GEOGRAPHIC RANGE TABLE

The following table gives the approximate geographic range of visibility for an object which may be seen by an observer at sea level. It is necessary to add to the distance for the height of any object the distance corresponding to the height of the observer's eye above sea level.

Height Feet / Meters	Distance Nautical Miles (NM)	Height Feet / Meters	Distance Nautical Miles (NM)	Height Feet / Meters	Distance Nautical Miles (NM)
5/1.5	2.6	70/21.3	9.8	250/76.2	18.5
10/3.1	3.7	75/22.9	10.1	300/91.4	20.3
15/4.6	4.5	80/24.4	10.5	350/106.7	21.9
20/6.1	5.2	85/25.9	10.8	400/121.9	23.4
25/7.6	5.9	90/27.4	11.1	450/137.2	24.8
30/9.1	6.4	95/29.0	11.4	500/152.4	26.2
35/10.7	6.9	100/30.5	11.7	550/167.6	27.4
40/12.2	7.4	110/33.5	12.3	600/182.9	28.7
45/13.7	7.8	120/36.6	12.8	650/198.1	29.8
50/15.2	8.3	130/39.6	13.3	700/213.4	31.0
55/16.8	8.7	140/42.7	13.8	800/243.8	33.1
60/18.3	9.1	150/45.7	14.3	900/274.3	35.1
65/19.8	9.4	200/61.0	16.5	1000/304.8	37.0

Example: Determine the geographic visibility of an object, with a height above water of 65 feet, for an observer with a height of eye of 35 feet.

Enter above table;

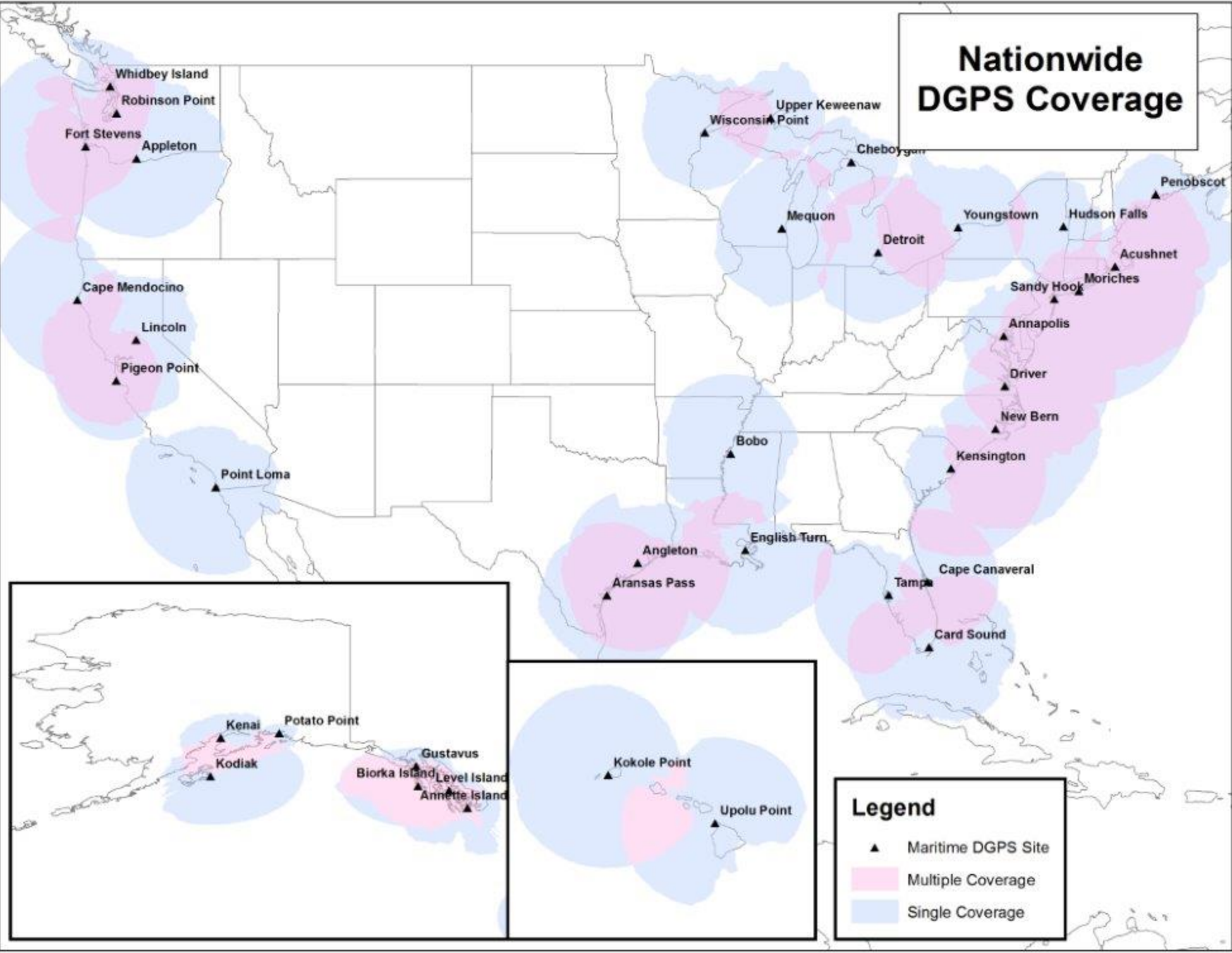
Height of object 65 feet= 9.4 NM
 Height of observer 35 feet= 6.9 NM
 Computed geographic visibility= 16.3 NM

This Page Intentionally Left Blank

TABLE OF CONTENTS

Light List Regions	Inside Front Cover
U.S. DGPS Sites.....	i
USCG Contact Information	ii
Preface	v
Introduction.....	vi
SEACOAST	
Maine	1
New Hampshire.....	3
Massachusetts	4
Rhode Island	8
New York.....	9
New Jersey.....	9
BAYS, RIVERS, AND HARBORS	
Frenchman Bay	18
Blue Hill Bay.....	22
Penobscot Bay	29
Kennebec River	47
Portland Harbor.....	65
Portsmouth Harbor.....	70
Merrimack River	77
Gloucester Harbor.....	81
Boston Harbor	92
Cape Cod Canal.....	114
Nantucket Sound.....	118
Buzzards Bay	148
Narragansett Bay	165
Block Island Sound.....	180
Fishers Island Sound.....	185
Long Island Sound	192
New London Harbor	198
New York Harbor.....	301
Hudson River	323
Lake Champlain	338
Index.....	Index 1
Cross Reference.....	Cross Reference 1

Nationwide DGPS Coverage



Legend

- ▲ Maritime DGPS Site
- Multiple Coverage
- Single Coverage

COAST GUARD DISTRICT COMMANDERS

DISTRICT	ADDRESS	WATERS OF JURISDICTION
FIRST	408 Atlantic Avenue Boston, MA 02110-3350 Tel: 617-223-8356 http://www.uscg.mil/d1	Maine, New Hampshire, Massachusetts, Vermont (Lake Champlain), Rhode Island, Connecticut, New York, to Shrewsbury River, New Jersey.
FIFTH	Federal Building 431 Crawford Street Portsmouth, VA 23704-5004 Tel: (757) 398-6486 (757) 398-6552 http://www.uscg.mil/d5	Shrewsbury River, New Jersey to Delaware, Maryland, Virginia, District of Columbia, and North Carolina.
SEVENTH	Brickell Plaza Federal Building 909 SE 1st Avenue; Rm:406 Miami, FL 33131-3050 Tel: (305) 415-6752 (305) 415-6800 http://www.uscg.mil/d7	South Carolina, Georgia, Florida to 83°50'W, and Puerto Rico and adjacent islands of the United States.
EIGHTH	Hale Boggs Federal Building 500 Poydras Street New Orleans, LA 70130-3310 Tel: (504) 671-2327 (504) 671-2137 http://www.uscg.mil/d8	Florida westward from 83°50'W, Alabama, Mississippi, Louisiana, Texas, the Mississippi River System except that portion of the Illinois River north of Joliet, Illinois.
NINTH	1240 East 9th Street Cleveland, OH 44199-2060 Tel: (216) 902-6060 (216) 902-6117 http://www.uscg.mil/d9	Great Lakes and St. Lawrence River above St. Regis River.
ELEVENTH	Coast Guard Island Building 50-2 Alameda, CA 94501-5100 Tel: (510) 437-2975 http://www.uscg.mil/d11	California, Nevada, Utah, Arizona.
THIRTEENTH	Federal Building 915 Second Avenue 35th Floor, Rm 3510 Seattle, WA 98174-1067 Tel: (206) 220-7270 (206) 220-7004 http://www.uscg.mil/d13	Oregon, Washington, Idaho, and Montana.
FOURTEENTH	Prince Kalaniana'ole Federal Bldg. 300 Ala Moana Blvd 9th Floor, Room 9-220 Honolulu, HI 96850-4982 Tel: (808) 535-3409 (808) 535-3414 http://www.uscg.mil/d14	Hawaiian, American Samoa, Marshall, Marianas, and Caroline Islands.
SEVENTEENTH	PO Box 25517 Juneau, AK 99802-5517 Tel: (907) 463-2029 (907) 463-2269 http://www.uscg.mil/d17	Alaska.

**U. S. COAST GUARD
FIRST DISTRICT ATON UNIT LISTING**

AIDS TO NAVIGATION TEAMS

ANT Boston

427 Commercial St.
Boston, MA 02109-1027
Tel: (617) 223-3293

ANT Bristol

1 Thames St
P.O. Box 1050
Bristol, RI 02809-1050
Tel: (401) 253-9585

ANT Long Island Sound

120 Woodward Ave
New Haven, CT 06512-3698
Tel: (203) 468-4513

ANT Moriches

100 Foster Avenue
Hampton Bays, NY 11946-3233
Tel: (631) 728-6981

ANT New York

85 Port Terminal Blvd. Slip 6
Bayonne, NJ 07002-5041
Tel: (201) 443-6298

ANT Saugerties

154 Lighthouse Dr.
Saugerties, NY 12477-9101
Tel: (845) 246-7612

ANT South Portland

259 High St
South Portland, ME 04106-0007
Tel: (207) 767-0392

ANT Southwest Harbor

184 Clark Point Road
Southwest Harbor, ME 04679-5000
Tel: (207) 244-4281

ANT Woods Hole

1 Little Harbor Road
Woods Hole, MA 02543-1099
Tel: (508) 457-3329

STATION

STA Burlington

1 Depot Street
Burlington, VT 05401-5226
Tel: (802) 951-6792

BUOY TENDERS

USCGC ABBIE BURGESS (WLM-553)

54 Tillson Avenue
Rockland, ME 04841-3417
Tel: (207) 594-2663

USCGC IDA LEWIS (WLM-551)

47 Chandler St, Pier 2
Newport, RI 02841-1716
Tel: (401) 841-6948

USCGC JUNIPER (WLB 201)

47 Chandler St, Pier 2,
Newport, RI 02841-1716
Tel: (401) 841-6953

USCGC KATHERINE WALKER (WLM

552) 85 Port Terminal Blvd. Slip #1
Bayonne, NJ 07002-5041
Tel: (201) 443-5311

USCGC MARCUS HANNA (WLM-554)

259 High Street
South Portland, ME 04106-0007
Tel: (207) 767-0380

USCGC OAK (WLB 211)

47 Chandler St, Pier 2
Newport, RI 02841-1716
Tel: (401) 841-2944

USCG NAVIGATION CENTER Navigation Information Service (NIS)

The U.S. Coast Guard Navigation Center (NAVCEN) is the official government source of information for civil users of the Global Positioning System (GPS). The Navigation Information Service (NIS) is available 24 hours a day, seven days a week, for all Radio Navigation and maritime related needs via phone, fax or e-mail. The NIS provides users the ability to access real time or archived GPS, NDGPS, DGPS, and LNM information at <http://www.navcen.uscg.gov>, as well as subscribe to an automated list service which enables users to receive GPS status messages and Notice to NAVSTAR User (NANU) messages via direct Internet e-mail.

The NAVCEN also disseminates GPS and DGPS safety advisory broadcast messages through USCG broadcast stations utilizing VHF-FM voice, HF-SSB voice, and NAVTEX broadcasts. The broadcasts provide the GPS and DGPS user in the marine environment with the current status of the navigation systems, as well as any planned/unplanned system outages that could affect GPS and DGPS navigational accuracy.

To comment on any of these services or ask questions about the service offered, contact the NAVCEN at:

Commanding Officer
U.S. Coast Guard NAVCEN (NIS)
MS 7310
7323 Telegraph Road
Alexandria, VA 20598-7310
Phone: (703) 313-5900
FAX: (703) 313-5920
Internet: <http://www.navcen.uscg.gov>

This Light List is corrected through [First Coast Guard District Local Notice to Mariners No. 01/18](#)

and through National Geospatial-Intelligence Agency (NGA) Notice to Mariners No. 01/18

The 2018 edition supersedes the 2017 print edition.

RECORD OF CORRECTIONS

YEAR 2018

1.....	2.....	3.....	4.....	5.....
6.....	7.....	8.....	9.....	10.....
11.....	12.....	13.....	14.....	15.....
16.....	17.....	18.....	19.....	20.....
21.....	22.....	23.....	24.....	25.....
26.....	27.....	28.....	29.....	30.....
31.....	32.....	33.....	34.....	35.....
36.....	37.....	38.....	39.....	40.....
41.....	42.....	43.....	44.....	45.....
46.....	47.....	48.....	49.....	50.....
51.....	52.....			

YEAR 2019

1.....	2.....	3.....	4.....	5.....
6.....	7.....	8.....	9.....	10.....
11.....	12.....	13.....	14.....	15.....
16.....	17.....	18.....	19.....	20.....
21.....	22.....	23.....	24.....	25.....
26.....	27.....	28.....	29.....	30.....
31.....	32.....	33.....	34.....	35.....
36.....	37.....	38.....	39.....	40.....
41.....	42.....	43.....	44.....	45.....
46.....	47.....	48.....	49.....	50.....
51.....	52.....			

PREFACE

Lights and other marine aids to navigation, maintained by or under authority of the U.S. Coast Guard and located on waters used by general navigation, are described in the Light List. This volume includes aids located in Maine, New Hampshire, Massachusetts, Vermont (Lake Champlain), Rhode Island, Connecticut and New York to Shrewsbury River, New Jersey.

Included are all Coast Guard aids to navigation used for general navigation such as lights, sound signals, buoys, daybeacons, and other aids to navigation. Not included are some buoys having no lateral significance, such as special purpose, anchorage, fish net, and dredging.

Aids to Navigation Link: <http://www.uscgboating.org>

CAUTION: Mariners attempting to pass a buoy close aboard risk collision with a yawing buoy or with the obstruction, which the buoy marks. Mariners must not rely on buoys alone for determining their positions due to factors limiting buoy reliability.

PRIVATE AIDS TO NAVIGATION

Included: Class I aids to navigation on marine structures or other works which the owners are legally obligated to establish, maintain, and operate as prescribed by the Coast Guard.

Included: Class II aids to navigation exclusive of Class I, located in waters used by general navigation.

Not included: Class III aids to navigation exclusive of Class I and Class II, located in waters not ordinarily used by general navigation.

LIGHT LIST AVAILABILITY

This Light List is published electronically annually and is intended to furnish more complete information concerning aids to navigation than can be conveniently shown on charts. This Light List is not intended to be used in place of charts or Coast Pilots. Charts should be consulted for the location of all aids to navigation. It may be dangerous to use aids to navigation without reference to charts.

This list is corrected to the date of the notices to mariners shown on the title page. Changes to aids to navigation during the year are advertised in U.S. Coast Guard Local Notices to Mariners and National Geospatial-Intelligence Agency (NGA) Notices to Mariners. Important changes to aids to navigation are also broadcast through Coast Guard or Naval radio stations and NAVTEX. Mariners should keep their Light Lists, charts and other nautical publications corrected from these notices and should consult all notices issued after the date of publication of this Light List.

The electronic version of this publication is available at: <http://www.navcen.uscg.gov/index.php?pageName=lightLists>

A weekly-updated electronic copy of this publication is also available at:
<http://www.navcen.uscg.gov/index.php?pageName=lightListWeeklyUpdates>

IMPORTANT: A summary of corrections for this publication, which includes corrections from the dates shown on the title page to the date of availability, is advertised in the Local Notice to Mariners and the Notice to Mariners. These corrections must be applied in order to bring the Light List up-to-date. Additionally, this publication should be corrected weekly from the Local Notices to Mariners or the Notices to Mariners, as appropriate.

Mariners and others are requested to bring any apparent errors or omissions in these lists to the attention of:

COMMANDER, FIRST COAST GUARD DISTRICT (dpw)
408 Atlantic Avenue, Boston, Massachusetts 02110-3350
Telephone: (617) 223-8356
24 Hour FAX: (617) 223-8291
[D01-SG-LNM \(LNM@uscg.mil\)](mailto:D01-SG-LNM(LNM@uscg.mil))

or **USCG Navigation Center**
Charting Branch
MS 7310
7323 Telegraph Road
Alexandria, VA 20598-7310 Email:
TIS-PF-NISWS@USCG.MIL

INTRODUCTION

Light List Arrangement

In the context of the Light List, aids to navigation on the coasts are arranged in geographic order clockwise from north to south along to Atlantic coast, east to west along the Gulf of Mexico, and south to north along the Pacific coast. On the Great Lakes, aids to navigation are arranged from east to west and from south to north, except on Lake Michigan, which is arranged from north to south. Seacoast aids to navigation are listed first, followed by entrance and harbor aids to navigation, arranged from seaward to the head of navigation.

Names of aids to navigation are printed as follows to help distinguish at a glance the type of aid to navigation.

Seacoast/Lake coast Lights and Secondary Lights
RACONS
Sound Signals
RIVER, HARBOR, OTHER LIGHTS, AND VIRTUAL AIS
Lighted Buoys
Daybeacons, Unlighted Buoys, and Virtual Automatic Identification System (V-AIS) ATON

Light List numbers are assigned to all Federal aids to navigation and many private aids to navigation for reference in the Light List. Aids to navigation are numbered by fives in accordance with their order of appearance in each volume of the Light List. Other numbers and decimal fractions are assigned where newly established aids to navigation are listed between previously numbered aids to navigation. The Light Lists are renumbered periodically to assign whole numbers to all aids to navigation.

International numbers are assigned to certain aids to navigation in cooperation with the International Hydrographic Organization. They consist of an alphabetic character followed by three or four numeric characters. A cross reference listing appears after the index.

Description of Columns

Column (1): Light List Number.

Column (2): Name and location of the aid to navigation.

Note: A dash (-) is used to indicate the bold heading is part of the name of the aid to navigation. When reporting discrepancies or making references to such an aid to navigation in correspondence, the full name of the aid including the geographic heading, should be given.

Bearings are in degrees true, read clockwise from 000° through 359°.

Bearings on range lines are given in degrees and tenths or hundredths where applicable.

(C) indicates Canadian aid to navigation.

Column (3): Geographic position of the aid to navigation in latitude and longitude.

Column (4): Light characteristic for lighted aids to navigation.

Column (5): Height above water from the focal plane of the fixed light to mean high water, listed in feet.

For Volume 7 (Great Lakes), height above water from the focal plane of the fixed light to low water datum, listed in feet and meters.

Column (6): Nominal range of lighted aids to navigation, in nautical miles, listed by color for sector and passing lights. Not listed for ranges, directional lights, or private aids to navigation.

Column (7): The structural characteristic of the aid to navigation, including: dayboard (if any), description of fixed structure, color and type of buoy, height of structure above ground for major lights.

Column (8): Aid remarks, sound signal characteristics, including: VHF-FM channel if remotely activated, RACON characteristic, light sector arc of visibility, radar reflector, emergency lights, seasonal remarks, and private aid to navigation identification. AIS specific information may include its unique Maritime Mobile Service Identity (MMSI), the MMSI(s) of its source AIS transmission, and the application identifier of any Application Specific Messages (ASM) it may also be transmitting.

U.S. Coast Guard Light List Distribution

U.S. regulations require that most commercial vessels maintain on board a currently corrected, copy or pertinent extract, of the U.S. Coast Guard Light Lists which are available for free and are updated weekly on the Coast Guard Navigation Center's website at <https://www.navcen.uscg.gov/?pageName=lightLists>. Commercially printed versions are also available, but the Coast Guard does not attest to their veracity or sanction such publications.

CHARTS & PUBLICATIONS

Nautical Charts & Publications

Nautical charts covering the coastal waters of the United States and its territories are published by the National Ocean Service (NOS). Up-to-date paper copies of NOS charts are available from NOS Certified Agents. A list of agents can be found at:

<https://www.nauticalcharts.noaa.gov/charts/noaa-raster-charts.html#paper-nautical-charts>.

NOS also produces Raster Navigational Charts (RNC) and Electronic Navigational Charts (ENC). RNCs can be found at

<https://www.nauticalcharts.noaa.gov/noaa-raster-charts.html#rnc-charts>.

ENCs can be found at

<https://www.nauticalcharts.noaa.gov/charts/noaa-enc.html>.

Inland Electronic Navigational Charts (IENC) and chart books are published by the U.S. Army Corps of Engineers and are available online at <http://www.agc.army.mil/Missions/Echarts.aspx>.

Tide Tables and Tidal Current Tables are no longer printed or distributed by NOS. NOS Tide and Tidal Current predictions are available online at

http://tidesandcurrents.noaa.gov/tide_predictions.html. Commercially printed versions, using data provided by NOS, are also available. These products may be obtained from local stores that carry marine publications.

Notices to Mariners

Broadcast Notices to Mariners are made by the Coast Guard through Coast Guard radio stations. These notices, which are broadcast on VHF-FM, NAVTEX, and other maritime frequencies, are warnings that contain important navigational safety information. Included are reports of discrepancies and changes to aids to navigation, the positions of ice and derelicts, and other important hydrographic information.

Radio stations broadcasting Notices to Mariners are listed in the National Ocean Service United States Coast Pilot and in the National Geospatial-Intelligence Agency publication Radio Navigational Aids (Publication No. 117). VHF-FM voice broadcast times can be found online at <http://www.nws.noaa.gov/om/marine/vhfvoice.htm>.

Local Notices to Mariners (U.S. regional coverage) are another means which the Coast Guard disseminates navigational information for the United States, its territories, and possessions. A Local Notice to Mariners is issued by each Coast Guard district and is used to report changes and discrepancies to aids to navigation maintained by and under the authority of the Coast Guard. The Local Notice to Mariners also contain chart and Light List corrections, proposed aids to navigation projects open for public comment, ongoing waterway projects, bridge regulation changes, marine event information, and other concerns pertinent to the mariner.

Local Notices to Mariners are essential to all navigators for the purposes of keeping charts, Light Lists, Coast Pilots, and other nautical publications up-to-date. These notices are published weekly and can be found online at <https://www.navcen.uscg.gov/index.php?pageName=lnmMain>. Mariners may register with the Coast Guard Navigation Center to receive automatic notifications via email when new editions of the Local Notice to Mariners are available. Register at <https://www.navcen.uscg.gov/?pageName=BulletinSubscription>. Vessels operating in ports and waterways in several districts will have to obtain the Local Notice to Mariners for each district.

Notice to Mariners are prepared jointly by the National Geospatial-Intelligence Agency (NGA), the U.S. Coast Guard, and the National Ocean Service, and are published weekly by the NGA. The weekly Notice to Mariners advises mariners of important matters affecting navigational safety including new hydrographic discoveries, changes to aids to navigation, and foreign marine information. Also included are corrections to Light Lists, Coast Pilots, and Sailing Directions. This notice is intended for mariners and others who have a need for information related to oceangoing operations. Because it is intended for use by oceangoing vessels, many corrections that affect small craft navigation and associated waters are not included. Information concerning small craft is contained in the Coast Guard Local Notice to Mariners only. The weekly Notices to Marines may be found online at <http://msi.nga.mil/NGAPortal/MSI.portal>.

ATON DISCREPANCIES

The Coast Guard does not keep the tens of thousands of aids to navigation comprising the U.S. Aids to Navigation System under simultaneous and continuous observation. Mariners should realize that it is impossible to maintain every aid to navigation operating properly and on its assigned position at all times. Therefore, for the safety of all mariners, any who discovers an aid to navigation that is either off station or exhibiting characteristics other than those listed in

the Light Lists should promptly notify the nearest Coast Guard unit. Radio messages should be prefixed "COAST GUARD" and transmitted on VHF-FM channel 16 or directly to one of the U.S. Government radio stations listed in Chapter 3, Section 300L, Radio Navigation Aids (Publication No. 117). In addition to notifying the nearest Coast Guard unit by radio, a discrepant aid to navigation can be reported online at <https://www.navcen.uscg.gov/?pageName=atonOutageReport>.

U.S. AIDS TO NAVIGATION SYSTEM

GENERAL

The navigable waters of the United States are marked to assist navigation using the U.S. Aids to Navigation System, a system consistent with the International Association of Marine Aids to Navigation and Lighthouse Authorities (IALA) Maritime Buoyage System. The IALA Maritime Buoyage System is followed by most of the world's maritime nations and improves maritime safety by encouraging conformity in buoyage systems worldwide. IALA buoyage is divided into two regions made up of Region A and Region B. All navigable waters of the United States follow IALA Region B, except U.S. possessions west of the International Date Line and south of 10° north latitude, which follow Region A. Lateral aids to navigation in Region A vary from those located within Region B. Non-lateral aids to navigation in Region A are the same as those used in Region B. Appropriate nautical charts and publications should be consulted to determine whether the Region A or Region B marking schemes are in effect for a given area.

Aids to navigation are developed, established, operated, and maintained by the U.S. Coast Guard to accomplish the following:

1. Assist navigators in determining their position,
2. Assist the navigator in determining a safe course,
3. Warn the navigator of dangers and obstructions,
4. Promote the safe and economic movement of commercial vessel traffic, and
5. Promote the safe and efficient movement of military vessel traffic, and cargo of strategic military importance.

The U.S. Aids to Navigation System is designed for use with nautical charts. Nautical charts portray the physical features of the marine environment, which include: soundings, landmarks, hazards to navigation, and aids to navigation. To best understand the purpose of a specific aid to navigation, mariners should consult the associated nautical chart, which illustrates the relationship of the aid to navigation to channel limits, obstructions, hazards to navigation, and to the aids to navigation system as a whole. Seasonal aids to navigation are placed into service, withdrawn, or changed at specified times of the year. The dates shown in the Light Lists are approximate and may vary due to adverse weather or other conditions. These aids will be changed on Electronic Navigational Charts (ENC) based on Light List dates and electronic navigation system settings.

Mariners should maintain and consult suitable publications and navigation equipment depending on the vessel's requirements. This shipboard navigation equipment is separate from the aids to navigation system, but is often essential to its use.

The U.S. Aids to Navigation System is primarily a lateral system, which employs a simple arrangement of colors, shapes, numbers, and light characteristics to mark the limits of navigable

routes. This lateral system is supplemented with non-lateral aids to navigation where appropriate.

Federal aids to navigation consist of Coast Guard operated aids to navigation. The Coast Guard establishes, maintains, and operates a system of aids to navigation consisting of visual, audible, and electronic signals designed to assist the prudent mariner in the process of navigation.

The U.S. Aids to Navigation System contains the following subsystems:

1. **Intracoastal Waterway:** The aids to navigation marking the Intracoastal Waterway are arranged geographically from north to south on the Atlantic Coast and generally east to west on the coast of the Gulf of Mexico. Red lights (if so equipped), even numbers, and red buoys or triangle shaped daymarks are located on the southbound/westbound starboard waterway boundary. Green lights (if so equipped), odd numbers, and green buoys or square shaped daymarks are on the southbound/westbound port waterway boundary.
2. **Western Rivers:** The Western Rivers System is employed on the Mississippi River System, in addition to the Tennessee-Tombigbee Waterway and the Alabama, Atchafalaya, and Apalachicola-Chattahoochee-Flint River Systems. The Western Rivers System consists of the following characteristics:
 - a. Buoys are not numbered.
 - b. Numbers on beacons do not have lateral significance, but rather indicate mileage from a fixed point (normally the river mouth).
 - c. Diamond shaped non-lateral dayboards, red and white or green and white as appropriate, are used to indicate where the river channel crosses from one bank to the other.
 - d. Lights on green aids to navigation show a single-flash characteristic, which may be green or white.
 - e. Lights on red aids to navigation show a group-flash characteristic, which may be red or white.
 - f. Isolated danger marks are not used.
3. **Bridge Markings:** Bridges across navigable waters are marked with red, green and/or white lights for nighttime navigation. Red lights mark piers and other parts of the bridge. Red lights are also placed on drawbridges to show when they are in the closed position. Green lights are placed on drawbridges to show when they are in the open position. The location of these lights will vary according to the bridge structure. Green lights are also used to mark the centerline of navigable channels through fixed bridges. If there are two or more channels through the bridge, the preferred channel is also marked by three white lights in a vertical line above the green light.

Red and green retro-reflective panels may be used to mark bridge piers and may also be used on bridges not required to display lights. Lateral red and green lights and dayboards may mark main channels through bridges. Adjacent piers are marked with fixed yellow lights when the main channel is marked with lateral aids to navigation.

Centerlines of channels through fixed bridges may be marked with a safe water mark and an occulting white light when lateral marks are used to mark main channels. The centerline of the navigable channel through the draw span of floating bridges may be marked with a special mark. The mark will be a yellow diamond with yellow retro-reflective panels and may exhibit a yellow light that displays a Morse code "B" (a long flash followed by three short flashes). AIS-ATON and RACONs may be placed on the bridge structure to mark the centerline of the navigable channel through the bridge.

Vertical clearance gauges may be installed to enhance navigation safety. The gauges are located on the right channel pier or pier protective structure facing approaching vessels. Clearance gauges indicate the vertical distance between "low steel" of the bridge channel span (in the closed to navigation position for drawbridges) and the level of the water, measured to the bottom of the foot marks, read from top to bottom.

Drawbridges equipped with radiotelephones display a blue and white sign which indicates what VHF radiotelephone channels should be used to request bridge openings.

Private aids to navigation include aids to navigation that are either operated by private persons and organizations, or that are operated by states. Private aids to navigation are classified into three categories:

1. **Class I:** Aids to navigation on marine structures or other works which the owners are legally obligated to establish, maintain, and operate as prescribed by the U.S. Coast Guard.
2. **Class II:** Aids to navigation that, exclusive of Class I aids, are located in waters used by general navigation.
3. **Class III:** Aids to navigation that, exclusive of Class I and Class II aids, are located in waters not ordinarily used by general navigation.

Authorization for the establishment of a Class II or Class III private aid to navigation by the U.S. Coast Guard imposes no legal obligation that the aid actually be established and operated. It only specifies the location and operational characteristics of the aid for which the authorization was requested. Once the aid is established, however, the owner is legally obligated to maintain it in good working order and properly painted.

Lights and sound signals on oil wells or other offshore structures in navigable waters are private aids to navigation and are generally not listed in the Light List unless they are equipped with a RACON. Where space allows, the structures are shown on the appropriate nautical charts. Information concerning the location and characteristics of those structures which display lights and sound signals not located in obstruction areas are published in Local and/or weekly Notices to Mariners.

In general, during the nighttime, a series of white lights are displayed extending from the platform to the top of the derrick when drilling operations are in progress. At other times, structures are usually marked with one or more quick flashing white, red, or yellow lights, visible for at least one nautical mile during clear weather. Obstructions, which are a part of the appurtenances to the main structure, such as mooring piles, anchors, and mooring buoys, etc.,

are not normally lighted. In addition, some structures are equipped with a sound signal that produces a single two-second blast every 20 seconds.

BUOYS, BEACONS, AND AIS-ATON

The primary components of the U.S. Aids to Navigation System are buoys, beacons, and AIS-ATON.

Buoys are floating aids to navigation used extensively throughout U.S. waters. They are moored to sinkers by varying lengths of chain and may shift due to sea conditions and other causes. Buoys may also be carried away, capsized, or sunk. Prudent mariners will not rely solely on any single aid to navigation, particularly floating aids.

Buoy positions represented on nautical charts are approximate position only, due to the practical limitations of positioning and maintaining buoys and their sinkers in precise geographical locations. The position of buoys and beacons are indicated with a circle on the chart. The center of the symbol corresponds with the position of the aid.

Positions of Federal aids to navigation are verified during periodic maintenance visits. Between visits, environmental conditions, including atmospheric and sea conditions, seabed slope and composition, may shift buoys off their charted positions. Buoys may also be dragged off station, sunk, or capsized by a collision with a vessel.

Beacons are aids to navigation which are permanently fixed to the earth's surface. They range from large lighthouses to small single-pile structures and may be located on land or in the water. Lighted beacons are called lights; unlighted beacons are called daybeacons. Lighthouses are placed on shore or on marine sites and most often do not indicate lateral significance. Lighthouses with no lateral significance exhibit a white light.

Beacons exhibit a daymark. For small structures, these are colored geometric shapes that make an aid to navigation readily visible and easily identifiable against background conditions. Generally, the daymark conveys to the mariner, during daylight hours, the same significance as the aid's light or reflector does at night. The daymark of towers, however, consists of the structure itself. As a result, these daymarks do not infer lateral significance.

Ranges are non-lateral aids to navigation composed of two beacons, which when the structures appear to be in line, assist the mariner in maintaining a safe course. The appropriate nautical chart must be consulted when using ranges to determine whether the range marks the centerline of the navigable channel and also what section of the range may be safely traversed. Ranges typically display rectangular dayboards of various colors and are generally, but not always lighted. Ranges may display lights during daylight and at night. When lighted, ranges may display lights of any color.

Vessels should not pass fixed aids to navigation close aboard due to the danger of collision with rip-rap or structure foundations, or with the obstruction or danger being marked.

Aids to Navigation (ATON) may be enhanced by the use of an automatic identification system (AIS). AIS is a maritime navigation safety communications protocol standardized by the International Telecommunication Union and adopted by the International Maritime Organization for the broadcast or exchange of navigation information between vessels, aircraft, and shore

stations. AIS ATON can autonomously and at fixed intervals broadcast the name, position, dimensions, type, characteristics, and status from or concerning an aid to navigation. AIS ATON can be either real (physically fitted to an aid to navigation), synthetic (physically fitted somewhere other than to an aid to navigation) or virtual (physically nonexistent, but capable of being portrayed on AIS-capable displays).

Note: Physical AIS ATON can actively monitor and report the health and position status of its host; while Synthetic AIS ATON broadcasted from ashore (i.e. NAIS) can be used to electronically augment the range or portrayal (i.e., on radar and ECDIS) of an existing aid to navigation.

Although all existing AIS mobile devices can receive AIS ATON Reports and ASM messages, they may not readily appear on an AIS Minimal Keyboard Display or other shipboard navigational display systems (i.e., radar, ECDIS, ECS), which would require software updates to make these systems compliant with international navigation presentation standards (i.e., IEC 62288 (Ed. 2), IHO S-52 (Ed. 4.4.0)).

AIS ATON can also be used to broadcast both laterally (e.g., Port Hand Mark) and non-laterally significant marine safety information (e.g., environmental data, tidal information, and navigation warnings).

Note: AIS ATON stations broadcast their presence, identity (9-digit Marine Mobile Service Identity (MMSI) number), position, type, and status at least every three minutes or less via an AIS (ITU-R M.1371) message 21–AIS ATON Report. In addition to its AIS ATON Report, AIS ATON can broadcast significant marine safety information via Application Specific Messages (ASM), which are customized messages that can be used to broadcast additional aid information or other marine safety information (i.e., environmental conditions, wind speed and direction, tidal/current data, bridge air clearances, area notices, etc. They are identified by their: AIS message number (i.e. 6, 8, 25 or 26), Designated Area Code (DAC), Function Identifier (FI), and Version Number, e.g. U.S. Geographic Notice message: Msg# = 8, DAC = 367, FI = 22, Version = 2, and, denoted as 8/367.22.2.

TYPES OF SIGNALS

Lighted aids to navigation are, for the most part, equipped with daylight controls which automatically cause the light to operate during darkness and to be extinguished during daylight. These devices are not of equal sensitivity; therefore, all lights do not come on or go off at the same time. Mariners should ensure correct identification of aids to navigation during twilight periods when some lighted aids to navigation are lit while others are not.

The lighting apparatus is serviced at periodic intervals to assure reliable operation, but there is always the possibility of a light being extinguished or operating improperly.

The condition of the atmosphere has a considerable effect upon the distance at which lights can be seen. Sometimes lights are obscured by fog, haze, dust, smoke, or precipitation which may be present at the light, or between the light and the observer, and which is possibly unknown by the observer. Atmospheric refraction may cause a light to be seen farther than under ordinary circumstances.

A light of low intensity will be easily obscured by unfavorable conditions of the atmosphere and little dependence can be placed on it being seen. For this reason, the intensity of a light should always be considered when expecting to sight it in reduced visibility. Haze and distance may

reduce the apparent duration of the flash of a light. In some atmospheric conditions, white lights may have a reddish hue. Lights placed at high elevations are more frequently obscured by clouds, mist, and fog than those lights located at or near sea level.

In regions where ice conditions prevail in the winter, the lantern panes of lights may become covered with ice or snow, which will greatly reduce the visibility of the lights and may also cause colored lights to appear white.

The increasing use of brilliant shore lights for advertising, illuminating bridges, and other purposes, may cause marine navigational lights, particularly those in densely inhabited areas, to be outshone and difficult to distinguish from the background lighting. Mariners are requested to report such cases in order that steps may be taken to improve the conditions.

The "loom" (glow) of a powerful light is often seen beyond the limit of visibility of the actual rays of the light. The loom may sometimes appear sufficiently sharp enough to obtain a bearing. At short distances, some flashing lights may show a faint continuous light between flashes.

The distance of an observer from a light cannot be estimated by its apparent intensity. Always check the characteristics of lights in order to avoid mistaking powerful lights, visible in the distance, for nearby lights (such as those on lighted buoys) showing similar characteristics of low intensity. If lights are not sighted within a reasonable time after prediction, a dangerous situation may exist, requiring prompt resolution or action in order to ensure the safety of the vessel.

The apparent characteristic of a complex light may change with the distance of the observer. For example, a light which actually displays a characteristic of fixed white varied by flashes of alternating white and red (the rhythms having a decreasing range of visibility in the order: flashing white, flashing red, fixed white) may, when first sighted in clear weather, show as a simple flashing white light. As the vessel draws nearer, the red flash will become visible and the characteristics will appear as alternating flashing white and red. Later, the fixed white light will be seen between the flashes and the true characteristic of the light will finally be recognized as fixed white, alternating flashing white and red (F W A I W R).

If a vessel has considerable vertical motion due to pitching in heavy seas, a light sighted on the horizon may alternatively appear and disappear. This may lead the unwary to assign a false characteristic and hence, to error in its identification. The true characteristic will be evident after the distance has been sufficiently decreased or by increasing the height of eye of the observer.

Similarly, the effect of wave motion on lighted buoys may produce the appearance of incorrect light phase characteristics when certain flashes occur, but are not viewed by the mariner. In addition, buoy motion can reduce the distance at which buoy lights are detected.

Sectors of colored glass are placed in the lanterns of some lights in order to produce a system of light sectors of different colors. In general, red sectors are used to mark shoals or to warn the mariner of other obstructions to navigation or of nearby land. Such lights provide approximate bearing information, since observers may note the change of color as they cross the boundary between sectors. These boundaries are indicated in the Light List (Col. 8) and by dotted lines on charts. These bearings, as all bearings referring to lights, are given in true degrees from 000° to 359°, as observed from a vessel toward the light.

Altering course on the changing sectors of a light or using the boundaries between light sectors to determine the bearing for any purpose is not recommended. Be guided instead by the correct compass bearing to the light and do not rely on being able to accurately observe the point at which the color changes. This is difficult to determine because the edges of a colored sector cannot be cut off sharply. On either side of the line of demarcation between white, red, or green sectors, there is always a small arc of uncertain color. Moreover, when haze or smoke is present in the intervening atmosphere, a white sector might have a reddish hue.

The area in which a light can be observed is normally an arc with the light as the center and the range of visibility as the radius. However, on some bearings, the range may be reduced by obstructions. In such cases, the obstructed arc might differ with height of eye and distance. When adjoining land cuts off a light and the arc of visibility is given, the bearing on which the light disappears may vary with the distance of the vessel from which observed and with the height of eye. When the light is cut off by a sloping hill or point of land, the light may be seen over a wider arc by a vessel farther away than by one closer to the light.

The arc drawn on charts around a light is not intended to give information as to the distance at which it can be seen. The arc indicates the bearings between which the variation of visibility or obstruction of the light occurs.

Only aids to navigation with green or red lights have lateral significance and exhibit either flashing, quick flashing, group flashing, occulting, or isophase light rhythms. When proceeding in the conventional direction of buoyage, the mariner in IALA Region B, may see the following lighted aids to navigation:

Green lights on aids to navigation mark port sides of channels and locations of wrecks or obstructions that must be passed by keeping these lighted aids to navigation on the port hand of a vessel. Green lights are also used on preferred channel marks where the preferred channel is to starboard (i.e., aid to navigation left to port when proceeding in the conventional direction of buoyage). Red lights on aids to navigation mark starboard sides of channels and locations of wrecks or obstructions that must be passed by keeping these lighted aids to navigation on the starboard hand of a vessel. Red lights are also used on preferred channel marks where the preferred channel is to port (i.e., aid to navigation left to starboard when proceeding in the conventional direction of buoyage).

White and yellow lights have no lateral significance. The shapes, colors, letters, and light rhythms may determine the purpose of aids to navigation exhibiting white or yellow lights.

Most aids to navigation are fitted with retro reflective material to increase their visibility in darkness. Colored reflective material is used on aids to navigation that, if lighted, will display lights of the same color.

Preferred channel marks exhibit a composite group-flashing light rhythm of two flashes followed by a single flash.

Safe water marks exhibit a white Morse code "A" rhythm (a short flash followed by a long flash).

Isolated danger marks exhibit a white flashing (2) rhythm (two flashes repeated regularly).

Special marks exhibit yellow lights and exhibit a flashing or fixed rhythm.

Information and regulatory marks exhibit a white light with any light rhythm except quick flashing, flashing (2) and Morse code “A.”

For situations where lights require a distinct cautionary significance, as at sharp turns, sudden channel constrictions, wrecks, or obstructions, a quick flashing light rhythm will be used.

Shapes are used to provide easy identification on certain unlighted buoys and dayboards on beacons. These shapes are laterally significant only when associated with laterally significant colors.

In IALA Region B, cylindrical buoys (referred to as “can buoys”) and square dayboards mark the port side of a channel when proceeding from seaward. These aids to navigation are associated with solid green or green and red-banded marks where the topmost band is green.

Conical buoys (referred to as “nun buoys”) and triangular dayboards mark the starboard side of the channel when proceeding from seaward. These aids to navigation are associated with solid red or red and green-banded marks where the topmost band is red.

Unless fitted with topmarks; lighted, sound, pillar, and spar buoys have no shape significance. Their numbers, colors, and light characteristics convey their meanings.

Dayboards throughout the U.S. Aids to Navigation System are described using standard designations that describe the appearance of each dayboard. A brief explanation of the designations and of the purpose of each type of dayboard in the system is given below, followed by a verbal description of the appearance of each dayboard type.

Designations:

1. First Letter – Shape or Purpose

C: Crossing (Western Rivers only) diamond-shaped, used to indicate the points at which the channel crosses the river.

J: Junction (square or triangle) used to mark (preferred channel) junctions or bifurcations in the channel, or wrecks or obstructions which may be passed on either side; color of top band has lateral significance for the preferred channel.

K: Range (rectangular) when both the front and rear range dayboards are aligned on the same bearing, the observer is on the azimuth of the range, usually used to mark the center of the channel.

M: Safe Water (octagonal) used to mark the fairway or middle of the channel.

N: No lateral significance (diamond or rectangular) used for special purpose, warning, distance, or location markers.

S: Square used to mark the port side of channels when proceeding from seaward.

T: Triangle used to mark the starboard side of channels when proceeding from seaward.

2. Second Letter – Key Color

B – Black G – Green R – Red W – White Y – Yellow

3. Third Letter – Color of Center Stripe (Range Dayboards Only)

4. Additional Information after a (-)

-I: Intracoastal Waterway; a yellow reflective horizontal band on a dayboard; indicates the aid to navigation marks the Intracoastal Waterway.

-SY: Intracoastal Waterway; a yellow reflective square on a dayboard; indicates the aid to navigation is a port hand mark for vessels traversing the Intracoastal Waterway. May appear on a triangular daymark where the Intracoastal Waterway coincides with a waterway having opposite conventional direction of buoyage.

-TY: Intracoastal Waterway; a yellow reflective triangle on a dayboard; indicates the aid to navigation is a starboard hand mark for vessels traversing the Intracoastal Waterway. May appear on a square daymark where the Intracoastal Waterway coincides with a waterway having opposite conventional direction of buoyage.

Descriptions:

CNG: Diamond-shaped dayboard divided into four diamond-shaped colored sectors with the sectors at the side corners white and the sectors at the top and bottom corners green, with green reflective diamonds at the top and bottom corners and white reflective diamonds in the side corners (Western Rivers only).

CNR: Diamond-shaped dayboard divided into four diamond-shaped colored sectors with the sectors at the side corners white and the sectors at the top and bottom corners red, with red reflective diamonds at the top and bottom corners and white reflective diamonds in the side corners (Western Rivers only).

JG: Dayboard bearing horizontal bands of green and red, green band topmost, with corresponding reflective borders.

JG-I: Square dayboard bearing horizontal bands of green and red, green band topmost, with corresponding reflective borders and a yellow reflective horizontal band.

JG-SY: Square dayboard bearing horizontal bands of green and red, green band topmost, with corresponding reflective borders and a yellow reflective square.

JG-TY: Square dayboard bearing horizontal bands of green and red, green band topmost, with corresponding reflective borders and a yellow reflective triangle.

JR: Dayboard bearing horizontal bands of red and green, red band topmost, with corresponding reflective borders.

JR-I: Triangular dayboard bearing horizontal bands of red and green, red band topmost, with corresponding reflective borders and a yellow reflective horizontal band.

JR-SY: Triangular dayboard bearing horizontal bands of red and green, red band topmost, with corresponding reflective borders and a yellow reflective square.

JR-TY: Triangular dayboard bearing horizontal bands of red and green, red band topmost, with corresponding reflective borders and a yellow reflective triangle.

KBG: Rectangular black dayboard bearing a central green stripe.

KBG-I: Rectangular black dayboard bearing a central green stripe and a yellow reflective horizontal band.

KBR: Rectangular black dayboard bearing a central red stripe.

KBR-I: Rectangular black dayboard bearing a central red stripe and a yellow reflective horizontal band.

KBW: Rectangular black dayboard bearing a central white stripe.

KBW-I: Rectangular black dayboard bearing a central white stripe and a yellow reflective horizontal band.

KGB: Rectangular green dayboard bearing a central black stripe.

KGB-I: Rectangular green dayboard bearing a central black stripe and a yellow reflective horizontal band.

KGR: Rectangular green dayboard bearing a central red stripe.

KGR-I: Rectangular green dayboard bearing a central red stripe and a yellow reflective horizontal band.

KGW: Rectangular green dayboard bearing a central white stripe.

KGW-I: Rectangular green dayboard bearing a central white stripe and a yellow reflective horizontal band.

KRB: Rectangular red dayboard bearing a central black stripe.

KRB-I: Rectangular red dayboard bearing a central black stripe and a yellow reflective horizontal band.

KRG: Rectangular red dayboard bearing a central green stripe.

KRG-I: Rectangular red dayboard bearing a central green stripe and a yellow reflective horizontal band.

KRW: Rectangular red dayboard bearing a central white stripe.

KRW-I: Rectangular red dayboard bearing a central white stripe and a yellow reflective horizontal band.

KWB: Rectangular white dayboard bearing a central black stripe.

KWB-I: Rectangular white dayboard bearing a central black stripe and a yellow reflective horizontal band.

KWG: Rectangular white dayboard bearing a central green stripe.

KWG-I: Rectangular white dayboard bearing a central green stripe and a yellow reflective horizontal band.

KWR: Rectangular white dayboard bearing a central red stripe.

KWR-I: Rectangular white dayboard bearing a central red stripe and a yellow reflective horizontal band.

MR: Octagonal dayboard bearing stripes of white and red, with a white reflective border.

MR-I: Octagonal dayboard bearing stripes of white and red, with a white reflective border and a yellow reflective horizontal band.

NB: Diamond-shaped dayboard divided into four diamond-shaped colored sectors with the sectors at the side corners white and the sectors at the top and bottom corners black, with a white reflective border.

ND: Rectangular white mileage marker with black numerals indicating the mile number (Western Rivers only).

NG: Diamond-shaped dayboard divided into four diamond-shaped colored sectors with the sectors at the side corners white and the sectors at the top and bottom corners green, with a white reflective border.

NL: Rectangular white location marker with an orange reflective border and black letters indicating the location.

NR: Diamond-shaped dayboard divided into four diamond-shaped colored sectors with the sectors at the side corners white and the sectors at the top and bottom corners red, with a white reflective border.

NW: Diamond-shaped white dayboard with an orange reflective border and black letters describing the information or regulatory nature of the mark.

NY: Diamond-shaped yellow dayboard with yellow reflective border.

SG: Square green dayboard with a green reflective border.

SG-I: Square green dayboard with a green reflective border and a yellow reflective horizontal band.

SG-SY: Square green dayboard with a green reflective border and a yellow reflective square.

SG-TY: Square green dayboard with a green reflective border and a yellow reflective triangle.

SR: Square red dayboard with a red reflective border. (IALA Region “A”)

TG: Triangular green dayboard with a green reflective border. (IALA Region “A”)

TR: Triangular red dayboard with a red reflective border.

TR-I: Triangular red dayboard with a red reflective border and a yellow reflective horizontal band.

TR-SY: Triangular red dayboard with a red reflective border and a yellow reflective square.

TR-TY: Triangular red dayboard with a red reflective border and a yellow reflective triangle. These abbreviated descriptions are used in column (7) and may also be found on the illustrations of the U.S. Aids to Navigation System.

Numbers are used to provide easy identification of aids to navigation. In IALA Region B, all solid red and solid green aids are numbered, with the exception of buoys located on the Western Rivers. Red aids to navigation have even numbers and green aids to navigation have odd numbers. The numbers for each increase from seaward when proceeding in the conventional direction of buoyage. Numbers are kept in approximate sequence on both sides of the channel by omitting numbers where necessary.

Letters may be used to augment numbers when lateral aids to navigation are added to channels with previously completed numerical sequences. Letters will increase in alphabetical order from seaward, proceeding in the conventional direction of buoyage and are added to numbers as suffixes. Letters are not used for buoys on the Western Rivers.

No other aids to navigation are numbered. Preferred channel, safe water, isolated danger, special marks, and information and regulatory aids to navigation may be lettered, but not numbered.

Sound signal is a generic term used to describe aids to navigation that produce an audible signal designed to assist the mariner in periods of reduced visibility. These aids to navigation can be activated by several means (e.g., manually, remotely, or fog detector). The Coast Guard is replacing many fog detectors with mariner radio activated sound signals (MRASS). To activate, mariners key their VHF-FM radio a designated number of times on a designated VHF-FM channel. The sound signal is activated for a period of 15, 30, 45, or 60 minutes after which the activated assistance automatically turns off. In cases where a fog detector is in use, there may be a delay in the automatic activation of the signal. Additionally, fog detectors may not be capable of detecting patchy fog conditions.

Sound signals are distinguished by their tone and phase characteristics. The devices producing the sound, e.g., diaphones, diaphragm horns, sirens, whistles, bells, or gongs determine tones.

Phase characteristics are defined by the signal's sound pattern, i.e., the number of blasts and silent periods per minute and their durations. Sound signals sounded from fixed structures generally produce a specific number of blasts and silent periods each minute when operating. Sound signals installed on buoys are generally activated by the motion of the sea and therefore do not emit a regular signal characteristic. It is common, in fact, for a buoy to produce no sound signal when seas are calm.

The characteristic of a sound signal is listed in column (8) of the Light List. If the sound signal is remotely activated, column (8) will contain the VHF-FM channel and number of times the VHF-FM radio should be keyed. All waterway users equipped with a VHF-FM radio may activate the sound signal, but they are not required to do so. Unless it is specifically stated that a sound signal "Operates continuously," or the signal is a bell, gong, or whistle on a buoy, it can be assumed that the sound signal only operates during times of fog, reduced visibility, or adverse weather.

Caution: *Mariners should not rely on sound signals to determine their position. Distance cannot be accurately determined by sound intensity. Occasionally, sound signals may not be heard in areas close to their location. Signals may not sound in cases where fog exists close to, but not at, the location of the sound signal.*

Radar Beacons (RACONS) are radar transponders that when triggered by an X-band radar produce a coded response from its location, which is portrayed radially as a series of dots and dashes on the triggering radar. Although RACONS may be used on both laterally significant and non-laterally significant aids to navigation, their signal should just be used for identification purposes only.

RACONS have a typical output of 600 milliwatts and are considered a short range aid to navigation. Reception varies from a nominal range of 6 to 8 nautical miles when mounted on a buoy to as much as 17 nautical miles for a RACON mounted on a fixed structure. It must be understood that these nominal ranges are dependent upon many factors.

The beginning of the RACON presentation occurs about 50 yards beyond the RACON position and will persist for a number of revolutions of the radar antenna (depending on its rotation rate). Distance to the RACON can be measured to the point at which the RACON flash begins, but the figure obtained will be greater than the vessel's distance from the RACON. This is due to the slight response delay in the RACON apparatus.

Radar operators may notice some broadening or spoking of the RACON presentation when their vessel approaches closely to the source of the RACON. This effect can be minimized by adjusting the IF gain or sweep gain control of the radar. If desired, the RACON presentation can be virtually eliminated by operation of the FTC (fast time constant) controls of the radar.

Radar Reflectors are special fixtures, incorporated into both lighted and unlighted aids to navigation, to enhance the reflection of radar energy. These fixtures help radar-equipped vessels to detect buoys and beacons, which are so equipped. However, they do not positively identify a radar target as an aid to navigation.

NAVIGATION SERVICES

GLOBAL POSITIONING SYSTEM (GPS), DIFFERENTIAL GPS (DGPS), AND NATION-WIDE AUTOMATIC IDENTIFICATION SYSTEM (NAIS)

Global Positioning System (GPS) is a satellite based navigation system, operated and controlled by the Department of Defense (DOD) under U.S. Air Force management, which provides precise, worldwide, three-dimensional navigation capabilities. The system was originally designed for military application; however, it is now available to all and used almost ubiquitously. The United States is committed to maintaining the availability of at least 24

operational GPS satellites, in six precise orbital planes, each of which complete a circular 10,900 nautical mile orbit of the earth once every 12 hours. Ideally, a minimum of four satellites will be visible from any position on the earth and will provide positions with a global horizontal accuracy within 3 meters, 95% percent of the time. Whenever possible, advance notice of when GPS satellites should not be used will be provided by the DOD and made available by the US Coast Guard through GPS status messages.

The Navigation Center coordinates and manages the Civil GPS Service Interface Committee (CGSIC), which comprises members from U.S. and international private, government, and industry user groups. The CGSIC is the recognized worldwide forum for effective interaction between all civil GPS users and the U.S. GPS authorities.

At least three satellites are required for a two-dimensional solution, however, GPS does not provide integrity information and mariners should exercise extreme caution when using GPS in restricted waterways.

Differential GPS (DGPS) is an augmentation to the GPS signals. Each site corrects for small variations in the signals from each satellite that is in view at that time. Satellite signals can vary due to small changes in the satellite's circuitry and orbit and from changes caused by local weather conditions. Satellite corrections are transmitted to users via radio signals in the medium frequency band (285-325 kHz) previously used for marine radiobeacons. DGPS corrections and integrity information are transmitted using Minimum Shift Keying (MSK) modulation. The modulation data rate is usually 100 or 200 bits per second (bps), but can also be 50 bps. The range of DGPS transmissions is from 40 to 300 nautical miles.

DGPS was the first Federal radionavigation system capable of providing the 10-meter navigation service required for the Harbor Entrance and Approach phase of maritime navigation. DGPS provides integrity messages for signals from the GPS satellites, as well as DGPS position corrections, and typically provides position accuracy of 1-3 meters.

Each DGPS site has two reference stations (which calculate the differential corrections), two integrity monitors (which ensure the differential corrections are accurate), a transmitter, and equipment to communicate status information to and receive commands from the control station. Each transmitter and reference station has a unique identification number that permits users to determine which site/equipment is providing their differential corrections. As distance from the transmitting site increases, the small error in the differential corrections increases. The best accuracy is achieved when using the DGPS site closest to the user.

Information regarding the location of DGPS transmitters is given on the map labeled U.S. DGPS Sites & Identification Numbers on page i. Users can access additional information and DGPS statuses, submit questions, and provide comments via the Navigation Information Service's website or by calling the Coast Guard Navigation Center DGPS watchstander at (703) 313-5902.

Navigation Information Service (NIS): The Coast Guard is the government interface for civil users of GPS and has established a Navigation Information Service (NIS) to meet the information needs of the civil user. The NIS is a Coast Guard entity that is manned 24 hours a day, 7 days a week, and is located at the Navigation Center (NAVCEN) in Alexandria, VA. It provides data broadcasts and on-line computer-based information services which are available 24 hours a day. The information provided includes present or future satellite outages, constellation changes, user instructions and tutorials, lists of service and receiver provides/users, and other GPS and DGPS related information.

Navigation Center Internet Service (www) website also offers an e-mail subscription service for GPS status messages, Notice Advisory to NAVSTAR Users (NANU) messages, Local Notice to Mariners, and Coast Guard Light List.

The NAVCEN disseminates GPS and DGPS safety advisory broadcast messages through USCG broadcast stations utilizing VHF-FM voice, HF-SSB voice, and NAVTEX broadcasts. The broadcasts provide the GPS and DGPS user in the marine environment with the current status of the navigation systems, as well as any planned/unplanned system outages that could affect GPS and DGPS navigational accuracy.

Nationwide Automatic Identification System (NAIS) consists of approximately 200 VHF receiver sites located throughout the coastal continental United States, inland rivers, Alaska, Hawaii, Puerto Rico, and Guam. NAIS couples AIS technology with a comprehensive network infrastructure to achieve ship-to-shore and shore-to-ship data transmission throughout the navigable waters of the United States. The system enables AIS-equipped vessels to receive important marine information such as safety and security messages, weather alerts, and electronic aids to navigation.

NAIS is designed to collect safety and security data from AIS-equipped vessels in navigable waters of the United States and share that data with Coast Guard operators and other government and port partners. The primary goal of NAIS is to increase situational awareness through data dissemination via a network infrastructure, particularly focusing on improving maritime security, marine and navigational safety, search and rescue, and environmental protection services. Collected AIS data improves the safety of vessels and ports through collision avoidance and the safety of the nation through detection, identification, and classification of vessels. NAIS broadcasts navigation enhancing safety related messages such as Synthetic AIS ATON Reports and Application Specific Messages.

For more information see:

- AIS messages at www.navcen.uscg.gov/?pageName=AIMessages,
- IMO Safety of Navigation Circular 289 and 290 regarding ASM's at www.navcen.uscg.gov/?pageName=AISReferences,
- IALA AIS ASM Catalog at www.e-navigation.nl/asm, and
- USCG Special Notice 14-02 regarding eATON at www.navcen.uscg.gov/?pageName=AISFAQ#21.

To comment on any of these services or ask questions about the service offered, contact the NAVCEN at:

Commanding Officer
U.S. Coast Guard Navigation Center
7323 Telegraph Road STOP 7310
Alexandria, VA 20598-7310
Phone: (703) 313-5900
Internet: <https://www.navcen.uscg.gov>

ABBREVIATIONS

Various abbreviations are utilized in Broadcast Notices to Mariners, Local Notices to Mariners, on charts, and in the Light Lists. Refer to the following list.

Light Characteristics

Alternating	AL
Characteristic	CHAR
Composite Group-Flashing	FL (2+1)
Composite Group-Occulting	OC (2+1)
Continuous Quick-Flashing	Q
Eclipse	EC
Fixed and Flashing	FFL
Fixed	F
Group-Flashing	FL (3)
Group-Occulting	OC (2)
Interrupted Quick-Flashing	IQ
Isophase	ISO
Morse Code	MO (A)
Occulting	OC
Single-Flashing	FL

Sound Signal Characteristics

Blast	BL
Every	EV
Seconds	S
Silent	SI

Colors*

Black	B
Blue	BU
Green	G
Orange	OR
Red	R
White	W
Yellow	Y

*NOTE: Color refers to characteristics of aids to navigation only.

Aids to Navigation

Aeronautical Radiobeacon	AERO RBN
Automatic Identification System	AIS
Daybeacon	DBN
Destroyed	DESTR
Differential GPS	DGPS
Discontinued	DISCONTD
Established	ESTAB
Exposed Location Buoy	ELB
Extinguished	EXT
Fog Signal Station	FOG SIG
Light List Number	LLNR

Light	LT
Lighted Bell Buoy	LBB
Lighted Buoy	LB
Lighted Gong Buoy	LGB
Lighted Horn Buoy	LHB
Lighted Whistle Buoy	LWB
Mariner Radio Activated	
Sound Signal	MRASS
Ocean Data Acquisition System	ODAS
Privately Maintained	PRIV MAINTD
Radar Reflector	RA REF
Radar Responder Beacon	RACON
Remote Radio Activated	
Sound Signal	RRASS
Single Point Mooring Buoy	SPM
Sound Signal	SS
Temporarily Replaced by	
Lighted Buoy	TRLB
Temporarily Replaced by	
Unlighted Buoy	TRUB
Topmark	TMK
Virtual AIS Aid to Navigation	V-AIS
Whistle	WHIS

Organizations

Commander, Coast Guard District CCGD (#)	
Coast Guard	CG
Corps of Engineers	USACE
National Geospatial-Intelligence Agency	NGA
National Ocean Service	NOS
National Weather Service	NWS

Vessels

Aircraft	A/C
Fishing Vessel	F/V
Liquefied Natural Gas Carrier	LNG
Motor Vessel (includes Steam Ship, Container Ship, Cargo Vessel, Tanker etc)	M/V
Pleasure Craft	P/C
Research Vessel	R/V
Sailing Vessel	S/V

Compass Directions

North	N
-------	---

South	S	Explosive Anchorage	EXPLOS ANCH
East	E	Fathom(s)	FM(S)
West	W	Foot/Feet	FT
Northeast	NE	Harbor	HBR
Northwest	NW	Height	HT
Southeast	SE	Hertz	HZ
Southwest	SW	Horizontal Clearance	HOR CL
		Hour	HR
<u>Months</u>		International Regulations for	
January	JAN	Preventing Collisions at Sea	COLREGS
February	FEB	Kilohertz	KHZ
March	MAR	Kilometer	KM
April	APR	Knot(s)	KT(S)
May	MAY	Minute (time, geo, pos)	MIN
June	JUN	Megahertz	MHZ
July	JUL	Moderate	MOD
August	AUG	Mountain, Mount	MT
September	SEP	Nautical Mile(s)	NM
October	OCT	Notice to Mariners	NTM
November	NOV	Obstruction	OBSTR
December	DEC	Occasion/Occasionally	OCCASION
		Operating Area	OPAREA
<u>Days of the Week</u>		Pacific	PAC
Monday	MON	Point(s)	PT(S)
Tuesday	TUE	Position	POS
Wednesday	WED	Position Approximate	PA
Thursday	THU	Pressure	PRES
Friday	FRI	Private, Privately	PRIV
Saturday	SAT	Prohibited	PROHIB
Sunday	SUN	Publication	PUB
		Range	RGE
<u>Various</u>		Reported	REP
Anchorage	ANCH	Restricted	RESTR
Anchorage Prohibited	ANCH PROHIB	River	RIV
Approximate	APPROX	Rock	RK
Atlantic	ATL	Saint	ST
Authorized	AUTH	Second (time, geo, pos)	SEC
Average	AVG	Signal Station	SIG STA
Bearing	BRG	Station	STA
Breakwater	BKW	Statute Mile(s)	SM
Broadcast Notice to Mariners	BNM	Storm Signal Station	S SIG STA
Canadian Aid	(C)	Temporary	TEMP
Captain of the Port	COTP	Thunderstorm	TSTORM
Channel	CHAN	Through	THRU
Code of Federal Regulations	CFR	True	T
Continue	CONT	Uncovers, Dries	UNCOV
Degrees (temp, geo, pos)	DEG	Universal Coordinate Time	UTC
Diameter	DIA	Urgent Marine Information Broadcast	UMIB
Edition	ED	Velocity	VEL
Effect/Effective	EFF	Vertical Clearance	VERT CL
Entrance	ENTR	Vessel Traffic Service	VTS

Visibility	VIS	Missouri	MO
Yard(s)	YD	Mississippi	MS
Warning	WARN	Mexico	MX
Weather	WX	Michigan	MI
Wreck	WK	Minnesota	MN
		Montana	MT
		Nebraska	NE
		Nevada	NV
		New Hampshire	NH
		New Jersey	NJ
		New Mexico	NM
		New York	NY
		North Carolina	NC
		North Dakota	ND
		Northern Marianas	MP
		Ohio	OH
		Oklahoma	OK
		Oregon	OR
		Pennsylvania	PA
		Puerto Rico	PR
		Rhode Island	RI
		South Carolina	SC
		South Dakota	SD
		Tennessee	TN
		Texas	TX
		United States	US
		Utah	UT
		Vermont	VT
		Virgin Islands	VI
		Washington	WA
		West Virginia	WV
		Wisconsin	WI
		Wyoming	WY
<u>Countries and States</u>			
Alabama	AL		
Alaska	AK		
American Samoa	AS		
Arizona	AZ		
Arkansas	AR		
California	CA		
Canada	CN		
Colorado	CO		
Connecticut	CT		
Delaware	DE		
District of Columbia	DC		
Florida	FL		
Georgia	GA		
Guam	GU		
Hawaii	HI		
Idaho	ID		
Illinois	IL		
Indiana	IN		
Iowa	IA		
Kansas	KS		
Kentucky	KY		
Louisiana	LA		
Maine	ME		
Maryland	MD		
Marshall Islands	MH		
Massachusetts	MA		

GLOSSARY OF AIDS TO NAVIGATION TERMS

Adrift: Afloat and unattached in any way to the shore or seabed.

Aid to Navigation: Any device external to a vessel or aircraft specifically intended to assist navigators in determining their position or safe course, or to warn them of dangers or obstructions to navigation.

Alternating Lights: A rhythmic light showing light of alternating colors.

Arc of Visibility: The portion of the horizon over which a lighted aid to navigation is visible from seaward.

Articulated Beacon: A beacon-like buoyant structure, tethered directly to the seabed and having no watch circle. Called articulated light or articulated daybeacon, as appropriate.

Assigned Position: The latitude and longitude position for an aid to navigation.

Beacon: A lighted or unlighted fixed aid to navigation attached directly to the earth's surface. (Lights and daybeacons both constitute beacons.

Bearing: The horizontal direction of a line of sight between two objects on the surface of the earth.

Bell: A sound signal producing bell tones by means of a hammer actuated by electricity on fixed aids and by sea motion on buoys.

Bifurcation: The point where a channel divides when proceeding from seaward. The place where two tributaries meet.

Broadcast Notice to Mariners: A radio broadcast designed to provide important marine information.

Buoy: A floating object of defined shape and color, which is anchored at a given position and serves as an aid to navigation.

Characteristic: The audible, visual, or electronic signal displayed by an aid to navigation to assist in the identification of an aid to navigation. Characteristic refers to lights, sound signals, RACONS, and daybeacons.

Commissioned: The action of placing a previously discontinued aid to navigation back in service.

Composite Group Flashing Light: A group flashing light in which the flashes are combined in successive groups of different numbers of flashes.

Composite Group-Occulting Light: A light similar to a group occulting light except that the successive groups in a period have different numbers of eclipses.

Conventional Direction of Buoyage: The general direction taken by the mariner when approaching a harbor, river, estuary, or other waterway from seaward, or proceeding upstream or in a direction of the main stream of flood tide, or in the direction indicated in appropriate nautical documents (normally, following a clockwise direction around land masses).

Daybeacon: An unlighted fixed structure which is equipped with a dayboard for daytime identification.

Dayboard: The daytime identifier of an aid to navigation presenting one of several standard shapes (square, triangle, rectangle) and colors (red, green, white, orange, yellow, or black).

Daymark: The daytime identifier of an aid to navigation. (See column 7 of the Light List)

Diaphone: A sound signal which produces sound by means of a slotted piston moved back and forth by compressed air. A "two-

tone” diaphone produces two sequential tones with a second tone of lower pitch.

Directional Light: A light illuminating a sector or very narrow angle and intended to mark a direction to be followed.

Discontinued: To remove from operation (permanently or temporarily) a previously authorized aid to navigation.

Discrepancy: Failure of an aid to navigation to maintain its position or function as prescribed in the Light List.

Discrepancy Buoy: An easily transportable buoy used to temporarily replace an aid to navigation not watching properly.

Dolphin: A minor aid to navigation structure consisting of a number of piles driven into the seabed or riverbed in a circular pattern and drawn together with rope.

Eclipse: An interval of darkness between appearances of a light.

Emergency Light: A light of reduced intensity displayed by certain aids to navigation when the main light is extinguished.

Establish: To place an authorized aid to navigation in operation for the first time.

Extinguished: A lighted aid to navigation which fails to show a light characteristic.

Fixed Light: A light showing continuously and steady, as opposed to a rhythmic light. (Do not confuse with “fixed” as used to differentiate from “floating”.)

Flash: A relatively brief appearance of a light, in comparison with the longest interval of darkness in the same characteristic.

Flash tube: An electronically controlled high-intensity discharge lamp with a very brief flash duration.

Flashing Light: A light in which the total duration of the light in each period is clearly shorter than the total duration of the darkness and in which the flashes of light are all of equal duration. (Commonly used for a single-flashing light which exhibits only single flashes which are repeated at regular intervals.)

Floating Aid to Navigation: A buoy, secured in its assigned position by a mooring.

Fog Detector: An electronic device used to automatically determine conditions of visibility which warrant the activation of a sound signal or additional light signals.

Fog Signal: See sound signal.

Geographic Range: The greatest distance the curvature of the earth permits an object of a given height to be seen from a particular height of eye without regard to luminous intensity or visibility conditions.

Global Positioning System (GPS): A satellite based radio-navigation system providing continuous worldwide coverage. It provides navigation, position, and timing information to air, marine, and land users.

Gong: A wave actuated sound signal on buoys which uses a group of saucer-shaped bells to produce different tones.

Group Flashing Light: A flashing light in which a group of flashes, specified in number, is regularly repeated.

Group Occulting Light: An occulting light in which a group of eclipses, specified in number, regularly repeated.

Horn: A sound signal which uses electricity or compressed air to vibrate a disc diaphragm.

Inoperative: Sound signal or electronic aid to navigation out of service due to a malfunction.

Interrupted Quick Flash: A quick flashing light in which the rapid alternations are interrupted at regular intervals by eclipses of long duration.

Isolated Danger Mark: A mark erected on, or moored above or very near, an isolated danger which has navigable water all around it.

Isophase Light: A rhythmic light in which all durations of light and darkness are equal.

Junction: The point where a channel divides when proceeding seaward. The place where a distributary departs from the main stream.

Lateral System: A system of aids to navigation in which characteristics of buoys and beacons indicate the sides of a channel or route relative to a Conventional Direction of Buoyage (usually upstream).

Light: The signal emitted by a lighted aid to navigation. The illuminating apparatus used to emit the light signal. A lighted aid to navigation on a fixed structure.

Light Sector: The arc over which a light is visible, described in degrees true, as observed from seaward towards the light. May be used to define distinctive color difference of two adjoining sectors, or an obscured sector.

Lighted Ice Buoy (LIB): A lighted buoy without a sound signal, and designed to withstand the forces of shifting and flowing ice. Used to replace a conventional buoy when that aid to navigation is endangered by ice.

Lighthouse: A lighted beacon of major importance.

Local Notice to Mariners: A written document issued by each U.S. Coast Guard district to disseminate important information affecting aids to navigation, dredging, marine construction, special marine activities, and

bridge construction on waterways within that district.

Luminous Range: The greatest distance a light can be expected to be seen given its nominal range and the prevailing meteorological visibility.

Mark: A visual aid to navigation. Often called navigational mark, including floating marks (buoys) and fixed marks (beacons).

Meteorological Visibility: The greatest distance at which a black object of suitable dimension could be seen and recognized against the horizon sky by day, or in case of night observations, could be seen and recognized if the general illumination were raised to the daylight level.

Mileage Number: A number assigned to aids to navigation which gives the distance in sailing miles along the river from a reference point to the aid to navigation. The number is used principally in the Mississippi River System.

Nominal Range: The maximum distance a light can be seen in clear weather (meteorological visibility of 10 nautical miles). Listed for all lighted aids to navigation except range lights, directional lights, and private aids to navigation.

Occulting Light: A light in which the total duration of light in each period is clearly longer than the total duration of the darkness and in which the intervals of darkness (occultations) are all of equal duration. Commonly used for single occulting light which exhibits only single occultations which are repeated at regular intervals.

Ocean Data Acquisition System (ODAS): Certain very large buoys in deep water for the collection of oceanographic and meteorological information. All ODAS buoys are yellow in color and display a yellow light.

Off Shore Tower: Monitored light stations built on exposed marine sites to replace lightships.

Off Station: A floating aid to navigation that is not on its assigned position.

Passing Light: A low intensity light which may be mounted on the structure of another light to enable the mariner to keep the latter light in sight when passing out of its beam during transit.

Period: The interval of time between the commencement of two identical successive cycles of the characteristic of the light or sound signal.

Pile: A long, heavy timber driven into the seabed or riverbed to serve as a support for an aid to navigation.

Port Hand Mark: A buoy or beacon which is left to the port hand when proceeding in the "Conventional Direction of Buoyage".

Preferred Channel Mark: A lateral mark indicating a channel junction or bifurcation, or a wreck or other obstruction which after consulting a chart, may be passed on either side.

Primary Aid to Navigation: An aid to navigation established for the purpose of making landfalls and coastwise passages from headland to headland.

Quick Light: A light exhibiting very rapid regular alternations of light and darkness, normally 60 flashes per minute.

RACON: A radar beacon which produces a coded response or radar paint, when triggered by a radar signal.

Radar: An electronic system designed to transmit radio signals and receive reflected images of those signals from a "target" in order to determine the bearing and distance to the "target".

Radar Reflector: A special fixture fitted to or incorporated into the design of certain aids to navigation to enhance their ability to reflect radar energy. In general, these

fixtures will materially improve the aid to navigation for use by vessels with radar.

Range: A line formed by the extension of a line connecting two charted points.

Range lights: Two lights associated to form a range which often, but not necessarily, indicates the channel centerline. The front range light is the lower of the two, and nearer to the mariner using the range. The rear light is higher and further from the mariner.

Rebuilt: A fixed aid to navigation, previously destroyed, which has been restored as an aid to navigation.

Regulatory Marks: A white and orange aid to navigation with no lateral significance. Used to indicate a special meaning to the mariner, such as danger, restricted operations, or exclusion area.

Relighted: An extinguished aid to navigation returned to its advertised light characteristics.

Replaced: An aid to navigation previously off station, adrift, or missing, restored by another aid to navigation of the same type and characteristics.

Replaced (temporarily): An aid to navigation previously off station, adrift, or missing restored by another aid to navigation of a different type and/or characteristic.

Reset: A floating aid to navigation previously off station, adrift or missing, returned to its assigned position (station).

Rhythmic Light: A light showing intermittently with a regular periodicity.

Sector: See light sector.

Setting a Buoy: The act of placing a buoy on assigned position in the water.

Siren: A sound signal which uses electricity or compressed air to actuate either a disc or a cup shaped rotor.

Skeleton Tower: A tower, usually of steel, constructed of heavy corner members and various horizontal and diagonal bracing members.

Sound Signal: A device which transmits sound, intended to provide information to mariners during periods of restricted visibility and foul weather.

Starboard Hand Mark: A buoy or beacon which is left to the starboard hand when proceeding in the Conventional Direction of Buoyage.

Topmark: One or more relatively small objects of characteristic shape and color placed on aid to identify its purpose.

Traffic Separation Scheme: Shipping corridors marked by buoys which separate incoming from outgoing vessels. Improperly called SEA LANES.

Watching Properly: An aid to navigation on its assigned position exhibiting the advertised characteristics in all respects.

Whistle: A wave actuated sound signal on buoys which produces sound by emitting compressed air through a circumferential slot into a cylindrical bell chamber.

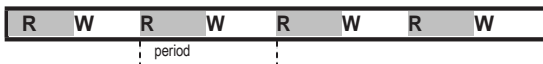
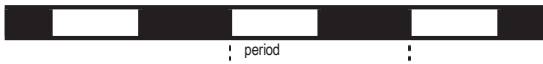
Winter Marker: An unlighted buoy without a sound signal, used to replace a conventional buoy when an aid to navigation is endangered by ice.

Winter Light: A light which is maintained during those winter months when the regular light is extinguished. It is of lower candlepower than the regular light, but usually the same characteristic.

Withdrawn: The discontinuance of an aid to navigation or equipment on an aid to navigation during severe ice conditions or for the winter season.

CHARACTERISTICS OF LIGHTS

Illustration



Type Description

1. **FIXED.**
A light showing continuously and steadily.
2. **OCCULTING.**
A light in which the total duration of light in a period is longer than the total duration of darkness and the intervals of darkness (eclipses) are usually of equal duration
 - 2.1 **Single-occulting.**
An occulting light in which an eclipse is regularly repeated.
 - 2.2 **Group-occulting.**
An occulting light in which a group of eclipses, specified in numbers, is regularly repeated.
 - 2.3 **Composite group-occulting.**
A light, similar to a group-occulting light, except that successive groups in a period have different numbers of eclipses.
3. **ISOPHASE.**
A light in which all durations of light and darkness are equal.
4. **FLASHING.**
A light in which the total duration of light in a period is shorter than the total duration of darkness and the appearances of light (flashes) are usually of equal duration.
 - 4.1 **Single-flashing.**
A flashing light in which a flash is regularly repeated (frequency not exceeding 30 flashes per minute).
 - 4.2 **Group-flashing.**
A flashing light in which a group of flashes, specified in number, is regularly repeated.
 - 4.3 **Composite group-flashing.**
A light similar to a group flashing light except that successive groups in the period have different numbers of
5. **QUICK.**
A light in which flashes are produced at a rate of 60 flashes per minute.
 - 5.1 **Continuous quick.**
A quick light in which a flash is regularly repeated.
 - 5.2 **Interrupted quick.**
A quick light in which the sequence of flashes is interrupted by regularly repeated eclipses of constant and long duration.
6. **MORSE CODE.**
A light in which appearances of light of two clearly different durations (dots and dashes) are grouped to represent a character or characters in the Morse code.
7. **FIXED AND FLASHING.**
A light in which a fixed light is combined with a flashing light of higher luminous intensity.
8. **ALTERNATING.**
A light showing different colors alternately

Abbreviation

- F**
- Oc**
- Oc (2)**
- Oc (2+1)**
- Iso**
- FI**
- FI (2)**
- FI (2+1)**
- Q**
- I Q**
- Mo (A)**
- F FI**
- AI RW**

This Page Intentionally Left Blank

INDEX

A

Allen Harbor	19290
Allen Harbor Entrance	14085
Allerton Harbor	12125
Ambrose Channel	34785
Amity Channel	33875
Annisquam Harbor Light	9615
Annisquam River	9590
Appletree Bay	39605
Apponaganset Bay	16741
Apponaug Cove	19425
Areskonk Creek Entrance	30490
Arthur Kill	36625
Ash Creek	24725
Aunt Lydias Cove	13335

B

BELLPORT BEACH	30090
Back Channel	8750
Back Cove Approach	7835
Back River Channel	5825
Bagaduce River	3570
Baker Island	2040
Bakers Island Light	350, 9975
Baldwin Bay	32470
Bannister Creek	31561
Barnstable Harbor	13090
Barett Beach	29910
Barrington River	18775
Bass Harbor	2335
Bass Harbor Head Light	2335
Bass River	10320
Bass River	14205
Bay Ridge Channel	36870
Beach Channel	34385
Beaverdam Creek Entrance	30175
Beavertail Light	17780
Belfast Harbor	4445
Belle Terre	26203
Bellmore Creek Channel	32415
Bellport Bay	30130
Beverly Channel	10215
Bird Island Flats	11150
Bishop And Clerks Light	14490
Bishop and Clerks	14485
Black Island	2397.1
Black Rock Harbor	24670
Block Island	19685
Block Island Southeast Light	640
Blue Hill Bay Approach	2291
Blue Hill Harbor	2635
Boat Basin	30425
Bold Island	3025
Boon Island Light	155
Booth Bay	5480
Bomow Pit Channel	32310
Boston Light	425, 11340
Boston Main Channel	10865
Boston North Channel	10680
Boston South Channel	10740
Bowline Point	37830
Branford Harbor	23950

Brant Point Light	15205
Bridgeport Harbor	24575
Bristol Harbor	18165
Broad Channel	31750
Broad Creek Channel	33314
Broad Sound	6800
Broadway	15755
Bronx River	27550
Brother Island Channel	27250
Browns Head Light	3965
Bullock Cove	18350
Burlington Bay	39615
Burnt Coat Harbor	2670
Buttermilk Bay Approach	17385
Buttermilk Channel	36975
Buzzards Bay Entrance Light	630, 15985
Buzzards Bay Main Channel	16000
Byram Harbor	25515

C

Camden Harbor	4310
Canal Terminal	39430
Canapitsit Channel	15930
Cape Ann Light	295, 295
Cape Cod Canal Approach	13035
Cape Cod Canal Eastern Entrance	13050
Cape Elizabeth Light	60, 7520
Cape Harbor	5610
Cape Neddick Harbor	8250
Cape Neddick Light	125
Cape Porpoise Harbor	8090
Captain Harbor (From Westward)	25350
Captain Harbor (From Eastward)	25325
Caman Creek	34150
Carvers Harbor From Eastward	3685
Carvers Harbor From South	3715
Carvers Harbor From Westward	3745
Casco Bay Channel	7230
Casco Passage	2500
Castine Harbor	3530
Castle Hill Light	17795
Center Harbor	2865
Centerport Harbor Approach Channel	26835
Centerville Harbor Approach	14675
Centerville River	14725.1
Chandler Bay	1205
Chandler Cove	7084
Chapel Hill North Channel	35255
Chapel Hill South Channel	35195
Chatham Harbor	13309
Chatham Inlet Bar Guide Light	13305
Chatham Light	525, 525
Chatham Midchannel	13308.95
Chatham Roads	13800
Cheesequake Creek	36415
Chelsea Point Channel	11085
Chelsea River	10965
Childrens Island Channel	10385
Christmas Cove	5300

City Bay	39325
City Island	25970
Claremont Terminal Channel	37195
Cleveland East Ledge Light	16080
Cleveland Ledge Channel	16085
Cliff Island	7015
Clinton Harbor	23460
Cobscook Bay	1000
Coecles Harbor	28195
Coeymans Dike	38835
Cohasset Channel	12185
Cohasset Eastern Channel	12243
Cohasset Harbor	12220
Cohasset Western Channel	12155
Cole River	19075
Compton Channel	35690
Coney Island Channel	35285
Coney Island Creek Entrance	35335
Coney Island Light	34910
Connecticut River	22505
Conscience Bay	26179
Constable Hook Channel	37000
Corey Creek Entrance	28515
Cos Cob Harbor	25420
Cotuit Anchorage	14735
Cotuit Entrance Channel	14760.1
Cotuit Harbor	14760.36
Cove Harbor	25125
Coveleigh Yacht Club Channel	25576
Cranberry Harbor	2165
Cross Island Narrows	1095
Crotch Island Passage	3115
Crow Island Haunts Creek	32720
Cumberland Bay	39415
Cumberland Head	39365
Cuttyhunk	16315
Cuttyhunk Harbor	16260

D

Damariscotta River	5255
Damariscove Island Approach	5405
Danvers River	10280
Daves Creek	30605
Dauids Island Channel	25890
Davis Park	29955
Deer Island	10830
Deer Island Light	10795
Deer Island Thorofare	2995
Derby Channel	10115
Dering Harbor	28075
Diamond Island Pass	7175
Dice Head Light	3530
Dickerson Channel	29420
Dog Channel	33063
Dorchester Bay	11195
Dorchester Bay Basin	11260
Duck Creek	13235
Duck Island Roads	23395
Duxbury Bay	12580
Duxbury Bay Beach Channel	12690
Dyer Island Narrows	1585

INDEX

E

Eagle Island Channel	10360
East Bay	14726.91
East Bay	33260
East Channel	29240
East Harbor	20970
East Norwalk Channel	25055
East Passage	17775
East Penobscot Bay	3440
East River Main Channel	27215
East Rockaway Channel	32020
East Rockaway Inlet	31495
East Side	16375
East-West Channel	29475
Eastchester Bay	26007
Eastern Approach	17675
Eastern Bay	1910
Eastern Bay	1390
Eastern Harbor	1490
Eastern Passage	2400
Eastern Point Light	330, 330
Eatons Neck	26420
Eatons Neck Light	21325
Echo Bay	25775
Edgartown Harbor	15390
Eel Pond	14920
Egg Rock Light	1865
Eggemoggin Reach	2825
Englewood Channel	14650
Englishman Bay	1170
Erie Basin	36895
Essex Anchorage	22615
Essex Bay	9480
Essex River	9540
Execution Rocks Light	21440

F

Falkner Island Light	21170
Falmouth Harbor	15105
Fam River	23975
Fam Shoals Channel	29210
Fields Point Channel	18510
Fire Island East End Channel	30255
Fire Island Inlet	29110
Fire Island Light	695
Fisherman Island Passage	5415
Fivemile River	25075
Flanders Bay	1975
Flint Island Narrows	1615
Flushing Bay	27460
Flying Passage	5110
Fore River	7810
Forge River Channel	30445
Fort Hale Channel	24150
Fort Point Light	3585
Fox Creek	29600
Fox Island Thorofare	3860
Freeport Narrows	32945
Frenchman Bay	1840
Friendship Harbor	5035
Fundy Channel	32763

G

Gardiners Bay South Entrance	27730
Garett's Lead	32095
Gay Head Light	620, 15610
Gemitsen Inlet	34295
Gilkey Harbor	4390
Glen Island Channel	25915
Gloucester Harbor	295, 295
Gloucester Inner Harbor	9900
Goat Island Light	105, 8100
Goodwives River Approach	25100
Goose Rock Passage	5695
Gould Island Navy Torpedo Range	18015
Grand Cove	14420
Grass Hassock Channel	34450
Grassy Bay	34595
Gravesend Bay	35345
Great Captain Island Light	21400
Great Chazy River Boat Channel	39170
Great Duck Island Light	2295
Great Harbor	15695
Great Island Channel	19535
Great Island Channel	33630
Great Kills Harbor	35450
Great Peconic Bay	28750
Great Pond	15070
Great River	14872.1
Great Round Shoal Channel	13586
Great Salt Pond	19745
Great Sand Creek	33005
Great South Bay	29340
Green Harbor	12510
Green Harbor Approach	12490
Green Island Passage	6990
Green Pond	15030
Greens Cove Channel	37910
Greens Harbor	21970
Greens Ledge Light	21340
Greenwich Bay	19395
Greenwich Bay Approach	19320
Greenwich Cove	25380
Greenwich Harbor	25480
Greenwich Point	25395
Guilford Harbor	23715
Gull Island Reef	39335

H

Hackensack River	37535
Hadley Harbor	15840
Halfway Rock Light	40, 6675
Hamburg Cove	22695
Hammonasset River	23520
Hampton Harbor	8905
Harraseeket River	6940
Haskell Island	6745
Hassock Channel	32255
Head of Bay	34540
Hempstead Harbor	27047
Hendricks Harbor	5640
Herring River	14140
Hewlett Bay Extension	31900

I

Highland Light	500
Hingham Bay	11933
Hingham Harbor Approach	11985
Hingham Harbor Channel	12020
Hockomock Channel	5100
Hog Island Channel	16130
Hog Island Channel	31975
Hog Island Shoal Light	18145
Horton Point Light	21150
Houghs Neck Channel	11620
Housatonic River	24355
Hudson River (Above Troy Lock)	39070
Hudson River	37645
Huntington Bay	26465
Huntington Harbor	26530
Hurricane Sound	3805
Hussey Sound	7110
Hutchinson River	26040
Hyannis Harbor	14515
Hyannis Yacht Club	14605

J

Indian Point Security Zone	37931
Inner Bay Ledges	4090
Island End River	11015
Isle Au Haut Bay	3320
Isle Au Haut Thorofare	3375
Isles of Shoals Light	235
Jacobs Point	21680
James Creek	28730
Jericho Bay	2735
Johns Bay	5210
Johnson Creek	24650
Jones Inlet	30890

K

Kennebec River	6025
Kennebec River Approach	6005
Kennebunk River	8175
Kennebunkport	8145
Keyport Harbor	36370
Kickamuit River	18970
Kill Van Kull	37250
Kingston Channel	12770

L

La Motte Passage	39220
Lagoon Pond	15495
Lake Champlain Underwater Preserve	39635

INDEX

Old Orchard Shoal	35395
Olivers Channel	33605
Onset Bay	17300
Orient Point Light	21095, 27680
Orr's Island Approach	6655
Owls Head Bay	4680
Owls Head Light	4105
Oyster Bay	26865

P

Palmer Cove Channel	10131
Parker River	9420
Passage West of Grindstone Neck	1950
Passaic River	37625
Patchogue Bay	29740
Patchogue River	23405
Pattaganset River	22480
Patten Bay	2475
Pawcatuck River	20290
Pawtuxet Cove	18465
Peconic River	28975
Peddocks Island Channel	11504
Pemaquid Point Light	5145
Pemaquid River	5235
Penfield Reef Light	21290
Pennamaquan River	1025
Penobscot Bay Approaches	3210
Penobscot River	3580
Perkins Cove	8240
Petit Manan Approach	1730
Petit Manan Light	1735
Phillips Creek	30625
Phinneys Harbor	16650
Pig Island Gut	1425
Pine Island Channel	21735
Pine Orchard Harbor	23946
Piscataqua River	8455
Pleasant Bay	13398
Pleasant Bay	1510
Pleasant River	1540
Plum Gut	27675
Plum Island Sound	9300
Plymouth Bay	12535
Plymouth Harbor	12744, 12905
Plymouth Light	12545
Pocasset Harbor	16610
Pocasset Harbor Approach	16605
Point Judith Harbor of Refuge	19485
Point Judith Light	19450
Point Judith Pond	19550
Pollock Rip Channel	13530
Pond Island Passage	2575
Popponesett Bay	14760.8
Popponesett Spit Channel	14761.1
Porpoise Channel	26240
Port Chester Harbor	25535
Port Clyde Approach	4760
Port Elizabeth Channel	37445
Port Henry	39850
Port Jefferson Harbor	26125

Port Jersey Channel	37100
Port Kent Ferry Dock	39545
Port Newark Pierhead Channel	37455
Portland Harbor	7565
Portland Harbor Approach	7495
Portland Head Light	7565
Portland To Merepoint	7265
Portland To Yamouth	7330
Portsmouth Harbor (New Castle) Light	8330
Portsmouth Harbor	8305
Potts Harbor	6755
President Roads	10790
Price Bend	26490
Prospect Harbor	1775
Providence River	18310
Providence River Approach	18200
Provincetown Harbor Approach	13265

Q

Quantuck Canal	30559
Quiambog Cove Approach	20440
Quicks Hole	15910
Quincy Bay Approach	11470
Quisset Harbor	16330
Quonset Channel	19175

R

Race Point Light	485
Race Rock Light	19815
Racehorse Channel	33475
Rams Horn Channel	10270
Range Channel	29365
Raritan Bay	36110
Raritan River	36425
Raritan River Cutoff Channel	36585
Red Brook Harbor	16535
Red Brook Harbor South Channel	16565
Red Creek Pond Entrance	28885
Research Basin	27715
Reynolds Channel	31565
Richmond Creek	28535
Richmond Island Harbor	7875
Rikers Island Channel	27639
Robins Island	28755
Robinsons Hole	15875
Rockaway Inlet	34210
Rockaway Inlet West Channel	34290
Rockland Harbor	4125
Rockland Harbor Breakwater Light	4130
Rockport Harbor	4280
Romer Shoal Light	35070
Rondout Creek	38185
Rondout Creek Channel	38255
Round Cove Aquaculture	17030
Royal River	7400

Runway Channel	34615
Ryder Cove	13477
Rye Beach	25560
Rye Harbor	8875

S

Saco River	7940
Sag Harbor	28323
Sag Harbor Cove	28350
Sagamore Creek	8815
Sailors Haven Channel - Lone Hill Entrance	29870
Sailors Haven Channel	29820
Sakonnet River	17555
Salem Channel	9965
Salem South Channel	10144
Sandy Bay	9815
Sandy Hook Bay	35520
Sandy Hook Channel	35085
Sandy Hook Light	35040
Sandy Hook Point Light	35190
Sankaty Head Light	555
Santuit River Mid-Channel	14763
Saquatucket Harbor	14030
Sasanoa River	5890
Saugatuck River	24815
Saugus River Approach Channel	10645
Saybrook Breakwater Light	21115, 22495
Scarborough River	7886
Schoodic Harbor	1820
Scituate Harbor	12260
Scituate Harbor Approach	455, 12256
Scow Creek Channel	32855
Sea Dog Creek	32580
Seapit River	14875
Seapuit River	14756.2
Searsport Harbor	4455
Sebonac Creek	28795
Seekonk River	18599
Seguin Light	35, 5590
Seguin Passage	1250
Sesuit Harbor	13139.5
Setauket Harbor	26191
Shaw Cove Entrance	21975
Sheepscot Bay	5595
Sheepscot Bay Approach	5585
Sheepscot River	5620
Sheepshead Bay	34325
Sheffield Island Harbor	24950
Shelter Island Sound North Channel	27960
Shelter Island Sound South Channel	28235
Shinnecock Bay	30580
Shinnecock Bay East Channel	29060
Shinnecock Canal Entrance	28860
Shinnecock Inlet	29040

INDEX

Shinnecock Light	675, 29025
Shooters Island Channel	37374
Shrewsbury River	35740
Silver Eel Pond	21055
Sippican Harbor	17105
Sippican Harbor Upper Channel	17169
Slocums River Entrance	16705
Sloop Channel	30995
Smith Cove	22449
Smith Creek	30710
Somes Sound	2185
Somes Sound Approach	2055
South Brother Island Channel	27590
South Entrance (Burlington Bay)	39705
South Entrance	39260
South River	12360
South Side (Mattituck to Mt. Sinai)	21720
South Side	16320
South Side	29805
Southeast Entrance	19990
Southport Harbor	24762
Southway Mid-Channel	13306
Southwest Approach	2370
Southwest Approach	16711
Southwest Harbor	2220
Southwest Ledge	16530
Southwest Ledge Light	21210, 24060
Spiers Stand	11635
Squantum Channel	11245
St. Albans Bay	39310
St. Croix River	945
St. George River	4840
Stage Harbor	13855
Stamford East Branch	25270
Stamford Harbor	25195
Stamford West Branch	25275
State Boat Channel	31110
State Boat Channel	31430
Stave Island to Mallets Bay Channel	39485
Stirling Basin	28055
Stockton Harbor	4485
Stonington Harbor	20160
Stony Brook Harbor	26208
Stony Creek	23845
Stony Point Bay Channel	37865
Stratford Point Light	21230
Stratford Shoal (Middle Ground) Light	21260
Stratford Shoal	21250
Sullivan Harbor	1995
Swash Channel	35030
Swift Creek	32650

T

Tarpaulin Cove	15867
Tanytown North Channel	37735
Tanytown South Channel	37715
Taunton River	18995

Tenants Harbor Approach	4720
Terminal Channel	35610
Thames River	21985
The Cuckolds Light	5485
The Graves Light	390, 10679
The Gut North Entrance	39255
The Narrows	11415
The Nummet Channel	12745
The Raunt Channel	34635
The Reach	3765
The Thimbles	23865
Thimble Shoals	23820
Thread of Life	5240
Threemile Harbor	27775
Throgs Neck Light	21520
Tiverton Channel	18790
Tiverton Upper Channel	18810
Tobay Boat Basin Entrance	34180
Town Creek	28140
Town River Bay	11825
Townsend Gut	5555
Treadwell Bay	39355
Troy Dam	39055
Tuthill Cove	30515
Two Bush Channel	4520
Two Bush Island Light	4540

U

Union River Bay	2440
Union River Channel	2445
Upper Kennebec River	6185
Upper Thames River	22105

V

Valcour Island Channel	39460
Vineyard Haven	15465

W

Waquoit Bay	14825
Ward Point Secondary Channel	36320
Warren River	18680
Warwick Cove	19350
Warwick Light	19345
Watch Hill	29990
Watch Hill Cove	20415
Watch Hill Light	19795
Weir River	12073
Wellfleet Harbor	13160
Wells Harbor	8208
West Approach	21758
West Bay	14741
West Bay Inside	14741.23
West Channel	29371
West Chop Light	13775
West Cove	20845

West Falmouth Harbor	16380
West Harbor	20980
West Haven Channel	24234
West Island Channel	17046
West Passage	19080
West Penobscot Bay	4035
West Quoddy Head Light	1040
West River Entrance	23770
Westchester Creek	27410
Westcott Cove	25135
Western Bay	1465
Western Passage	6620
Western Passage	2590
Western Way	11529
Western Way	2250
Westport Harbor	17470
Westport Harbor Approach	17425
Westport River	17551.18
Wethersfield Cove	23310
Weymouth Back River	11885
Weymouth Fore River	11645
Whaleback Light	200
Wheeler Bay	4705
Whitehall Ferry	27355
Whitehall Narrows	39960
Whitehead Passage	7195
Wickford Harbor	19135
Wickham Creek	28640
Wild Harbor	16450
Winhole Channel	34555
Winter Harbor	1915
Winthrop Channel	11070
Winthrop Harbor Approach	11035
Wollaston Channel	11599
Wood End Light	13270
Wood Island Harbor	8055
Wood Island Light	95
Woods Hole Passage	15773
Woodsburgh Channel	31590
Wooley Pond	28590
Wychmere Harbor	14065

Y

York Harbor	8260
-----------------------	------

CROSS REFERENCE - INTERNATIONAL VS. U.S. LIGHT NUMBER

Inter.	-	U.S.	Inter.	-	U.S.	Inter.	-	U.S.	Inter.	-	U.S.
J0024.00		1120	J0152.00		6070	J0270.6		9715	J0383.00		13270
J0028.00		1390	J0156.00		6100	J0270.80		9740	J0384.00		13285
J0030.00		1305	J0157.00		6120	J0271.00		9765	J0384.20		13290
J0034		1735	J0158		6125	J0271.20		9795	J0386.00		485
J0038.00		1785	J0160.00		6135	J0272.00		9835	J0390.00		500
J0040.00		1865	J0160.10		6140	J0274.00		290	J0394.00		525
J0046.00		2045	J0166.00		6145	J0276.00		295	J0404.00		545
J0048.00		5	J0172.00		6440	J0280.00		330	J0406.00		555
J0052.00		2295	J0173.00		6580	J0282.00		9855	J0412.00		15150
J0054.00		2335	J0174.00		6700	J0284.00		9895	J0414.00		15205
J0056.00		2595	J0176.00		40	J0288.00		350	J0416.00		15160
J0058.00		2700	J0178.00		6845	J0290		10000	J0416.10		15165
J0062.00		2750	J0180.00		7145	J0290.10		10005	J0422		13860
J0064.00		3325	J0182.00		7280	J0294.00		10090	J0423		14050
J0068.00		3360	J0191.00		7690	J0295.00		10100	J0424.00		14065
J0072.00		3070	J0194.00		7620	J0306.00		10580	J0425.00		14085
J0074.00		3885	J0195.00		7610	J0306.20		10585	J0425.40		14170
J0078.00		3455	J0198.00		7605	J0306.40		10595	J0426.00		14450
J0080.00		3510	J0200.00		7225	J0306.60		10615	J0428.00		14540
J0082.00		3530	J0204.00		7575	J0306.80		10620	J0432.00		14741.21
J0086.00		3585	J0206.00		7565	J0310.00		390	J0438.00		13715
J0090.00		4405	J0208.00		60	J0314.00		425	J0440.00		15420
J0094.00		4340	J0214.00		95	J0318.00		11430	J0444.00		15460
J0096.00		4310	J0218.00		105	J0322.00		11440	J0446.00		13745
J0100.00		4280	J0220.00		8165	J0324.00		10795	J0448.00		15480
J0102.00		4130	J0222.20		8210	J0333.00		10890	J0449.00		15525
J0104.00		4105	J0226.00		125	J0337.00		10800	J0450.00		13775
J0110.00		3965	J0228.00		155	J0340.00		11065	J0451.00		14830
J0112.00		3760	J0233.00		8305	J0346.00		11675	J0452.00		15030
J0113.00		3715	J0233.10		8310	J0350.00		11710	J0454.00		15110
J0114.00		3235	J0234.00		8330	J0351.00		11715	J0456.00		15560
J0115.00		3250	J0235.00		8345	J0356.00		11650	J0460.00		15725
J0116.00		10	J0237.00		8355	J0360.00		440	J0461.20		15740
J0120.00		4540	J0237.10		8360	J0361.00		12185	J0463.00		15750
J0122.00		4580	J0238.00		8375	J0361.20		12195	J0464.00		15775
J0124.00		4780	J0239.00		8460	J0361.40		12205	J0465.00		15810
J0128.00		20	J0240.2		8470	J0361.60		12215	J0470.00		15580
J0132.00		4980	J0242.00		8520	J0362.00		465	J0472.00		15955
J0134.00		5145	J0242.20		8525	J0366.00		12545	J0480.00		630
J0136.00		5420	J0242.40		8530	J0368.00		12580	J0484		16295
J0140.00		5520	J0244.00		8785	J0369.00		12925	J0490.00		17470
J0142.00		5485	J0248		8880	J0369.20		12955	J0492.00		16040
J0144.00		5665	J0256.00		9070	J0372.00		13050	J0500.00		16830
J0145.00		5565	J0266.00		9315	J0374		13080	J0502.00		16085
J0145.40		5705	J0268.00		9615	J0374.10		13085	J0504.00		17095
J0146.00		35	J0270.00		9660	J0376.00		13135	J0510.00		16095
J0148.00		6025	J0270.20		9675	J0377.00		13150	J0510.10		16100
J0150.00		6050	J0270.40		9695	J0382.00		13275	J0512.00		16145

CROSS REFERENCE - INTERNATIONAL VS. U.S. LIGHT NUMBER

Inter.	-	U.S.	Inter.	-	U.S.	Inter.	-	U.S.	Inter.	-	U.S.
J0512.40	16150	J0680.00	20145	J0764.00	21150	J0890.00	25195
J0512.80	16165	J0681.00	20875	J0766.00	21650	J0892.00	21375
J0513.00	16170	J0690.00	660	J0767.00	21680	J0894.00	25225
J0514.00	16185	J0694.00	19880	J0771.00	23935	J0896	25230
J0515.00	16205	J0696.00	19875	J0771.10	23940	J0896.10	25235
J0516.00	16225	J0698.00	27790	J0773.00	21180	J0898.00	25270
J0517.00	16250	J0699.00	27795	J0774.00	21185	J0904.00	21400
J0520.00	16670	J0701.00	28195	J0775.00	23970	J0906.00	25365
J0524.00	17590	J0702.00	28245	J0778.00	24020	J0908.00	25545
J0530.00	17795	J0704.00	28255	J0778.10	24025	J0910.00	25550
J0532.00	17815	J0706.00	28310	J0780.00	21210	J0914.00	27065
J0540.00	17850	J0708.00	28325	J0782.00	24065	J0915.00	27110
J0547.00	17910	J0708.20	28355	J0782.20	24070	J0916.00	21440
J0552.00	17960	J0708.40	28375	J0784.00	21215	J0920.00	21480
J0555.00	18005	J0710.00	28050	J0786.00	24080	J0922.00	21500
J0566.00	18125	J0716.00	28870	J0790.00	24125	J0923.00	21505
J0570.00	18145	J0716.30	28885	J0794.00	24205	J0924.00	27165
J0572.00	18150	J0717.00	27725	J0798.60	24230	J0926.00	25720
J0576.00	18925	J0717.40	27705	J0804.00	24330	J0927.00	25765
J0577.00	18930	J0718.00	21095	J0808.40	24385	J0927.40	25770
J0580.00	18190	J0722.00	21090	J0808.60	24405	J0929.00	25945
J0582.00	18180	J0730.00	21825	J0810.00	21230	J0930.00	25965
J0583.00	18240	J0732.00	21845	J0812.00	21260	J0934.00	21520
J0584.00	18275	J0737.2	21860	J0816.00	26070	J0936.00	27215
J0590.00	18305	J0737.4	21865	J0818.00	26135	J0940.00	27250
J0592.00	18345	J0737.50	21890	J0819.00	26145	J0944	27495
J0600.00	18455	J0737.52	21895	J0820.10	26155	J0946.00	27515
J0602.00	18555	J0737.54	21900	J0828.00	24610	J0952.00	27635
J0604.00	18580	J0737.55	21905	J0830.00	24605	J0958.00	27265
J0608.00	19345	J0737.60	21945	J0832.00	24635	J0962.00	27650
J0610.00	19135	J0737.66	21960	J0838.00	24690	J0964.00	27640
J0612.00	19145	J0737.70	21995	J0839.00	24725	J0976.00	27285
J0628.00	19450	J0737.80	22055	J0839.10	24730	J0978.00	27290
J0631.00	19485	J0738.00	21070	J0840.00	21290	J0982.00	27300
J0632.00	19490	J0744.00	21115	J0842.00	24785	J0984.00	27295
J0636.00	19500	J0746.00	22520	J0844.00	24800	J0990.00	27315
J0638.00	19505	J0747.00	22595	J0850.00	24930	J0994.00	27325
J0644.00	19720	J0748.00	22610	J0852.00	24935	J0994.10	27330
J0646.00	19725	J0749.00	22675	J0856.00	25030	J0998.00	675
J0650.00	640	J0750.00	22870	J0858.00	25060	J1000.00	29040
J0654.00	19750	J0750.10	22880	J0860.00	25010	J1005.00	29105
J0658.00	19795	J0751.40	22890	J0862.00	24990	J1021.00	30890
J0664.00	20170	J0752.00	21560	J0867.00	26360	J1024.00	31500
J0665.00	20175	J0754.00	23400	J0867.20	26365	J1032.00	35025
J0666.00	20185	J0756.00	23395	J0879.00	26555	J1036.00	35040
J0671.00	20085	J0757.00	23405	J0880.00	26870	J1040.00	35190
J0676.00	20510	J0758.00	23455	J0884.00	25115	J1046.00	35595
J0678.00	20155	J0762.00	21170	J0884.10	25120	J1053.00	35560

CROSS REFERENCE - INTERNATIONAL VS. U.S. LIGHT NUMBER

Inter.	-	U.S.	Inter.	-	U.S.	Inter.	-	U.S.	Inter.	-	U.S.
J1053.10		35590	J1138.30		37790	J1141.10		38680			
J1054.00		35615	J1138.31		37795	J1141.20		38715			
J1054.10		35620	J1138.35		37785	J1141.25		38720			
J1057.00		36190	J1138.40		37800	J1141.30		38735			
J1057.10		36195	J1138.45		37830	J1141.35		38755			
J1057.20		36165	J1138.50		37835	J1141.40		38765			
J1057.30		36245	J1138.60		37895	J1141.45		38785			
J1057.40		36265	J1138.65		37900	J1141.50		38800			
J1057.60		36285	J1138.66		37905	J1141.51		38805			
J1057.70		36315	J1138.70		37945	J1141.55		38810			
J1057.80		36335	J1138.75		37965	J1141.60		38825			
J1058.00		36430	J1138.80		37980	J1141.65		38830			
J1061.00		36590	J1138.90		37990	J1141.70		38865			
J1062.00		36615	J1138.95		37995	J1141.75		38875			
J1062.20		36480	J1139.00		38000	J1141.80		38890			
J1062.25		36500	J1139.10		38015	J1141.85		38900			
J1064.00		36635	J1139.15		38025	J1141.90		38915			
J1066.00		36640	J1139.35		38100	J1141.95		38925			
J1066.10		36645	J1139.45		38120	J1142.00		38940			
J1067.50		36665	J1139.50		38125	J1142.10		38955			
J1067.51		36670	J1139.55		38130	J1142.15		38970			
J1068.20		36730	J1139.60		38140	J1142.30		38985			
J1068.50		36795	J1139.65		38145	J1154.00		37110			
J1068.52		36800	J1139.70		38155	J1156.00		34975			
J1068.60		36850	J1139.75		38185	J1161.00		34955			
J1070.00		35450	J1139.80		38190	J1164.00		37250			
J1072.00		35455	J1139.85		38290	J1164.10		37305			
J1074.00		35395	J1139.90		38315	J1166.00		37290			
J1081.90		34790	J1139.95		38320	J1166.20		37295			
J1082.00		34795	J1140.00		38335	J1173.00		37335			
J1082.10		35030	J1140.15		38390	J1174.00		37340			
J1090.00		35070	J1140.20		38405	J1176.00		37360			
J1092.00		34220	J1140.25		38420	J1177.00		37375			
J1096.00		34335	J1140.30		38430	J1177.50		37355			
J1097.00		34285	J1140.31		38435	J1177.70		36830			
J1100.00		34485	J1140.35		38460	J1177.71		36835			
J1103.80		34610	J1140.40		38475	J1178.00		37385			
J1106.00		34910	J1140.45		38490	J1179.00		36440			
J1108.00		34925	J1140.50		38515	J1184.00		37505			
J1114.00		36965	J1140.60		38530	J1186.00		37520			
J1118.00		36975	J1140.65		38540	J1188.00		37530			
J1118.10		36980	J1140.70		38545	J1189.00		37545			
J1126.00		35010	J1140.75		38560	J1189.40		37565			
J1134.20		27355	J1140.80		38580	J8236.00		21275			
J1134.40		27360	J1140.85		38610						
J1135.40		27370	J1140.90		38630						
J1138.20		37760	J1140.95		38645						
J1138.25		37775	J1141.00		38660						