



February 13, 2025

## **PUBLIC NOTICE 11-141b**

All interested parties are herein notified that the Commander, Eleventh Coast Guard District, has received application materials, dated January 11, 2024, from the City of Sacramento for approval of location and plans for a new bridge over a navigable waterway of the United States.

On May 9, 2024, the Coast Guard issued Public Notice 11-141a for the proposed new "C" Street (replacement "I" Street) drawbridge project. That public notice contained the horizontal and vertical clearances the proposed bridge would provide. After the public comment period ended, the City of Sacramento proposed a change in the horizontal clearance advertised in Public Notice 11-141a. The City of Sacramento now requests that the horizontal clearance of the proposed bridge, measured normal to the centerline of the channel, be reduced by 4 feet from 282 feet to 278 feet due to the addition of pier protection.

**BRIDGE, WATERWAY AND LOCATION:** New "C" Street (replacement "I" Street) drawbridge across the Sacramento River, mile 59.5, between the cities of West Sacramento, Yolo County and Sacramento, Sacramento County, California.  
38° 35' 21.3" N, 121° 30' 21.3" W

The proposed new "C" Street bridge will be approximately 1,050 feet upriver from the existing "I" Street bridge. The proposed new "C" Street bridge's horizontal clearance will be 142 feet greater than the downriver "I" Street bridge's horizontal clearance. The existing "I" Street drawbridge will remain as a rail bridge.

### **MINIMUM NAVIGATIONAL CLEARANCES OF NEW BRIDGE:**

The proposed new bridge will have clearances as described in the table below. These clearances represent the proposed decrease in horizontal clearance. There is no change in the proposed vertical clearance.

	Closed Position	Fully Open Position
Vertical	28.04 feet above Mean High Water elevation of 10.7 feet	81.87 feet above Mean High Water elevation of 10.7 feet

Horizontal	278 feet Measured normal to the centerline of the channel	278 feet Measured normal to the centerline of the channel
------------	---	---

**Datum:** NAVD88

In addition to the clearances above, the proposed bridge, in the fully open-to-navigation position, will provide 59.57 feet above the 200-year flood elevation of 33 feet.

**MINIMUM NAVIGATIONAL CLEARANCES DURING CONSTRUCTION:**

Between May 1 and July 1 (approximately 60 days) of the fourth construction season, falsework will be in place to facilitate installation of the lift span.

	Temporary Falsework
Vertical	25.35 feet above Mean High Water elevation of 10.7 feet
Horizontal	269 feet

**Datum:** NAVD88

**SOLICITATION OF COMMENTS:**

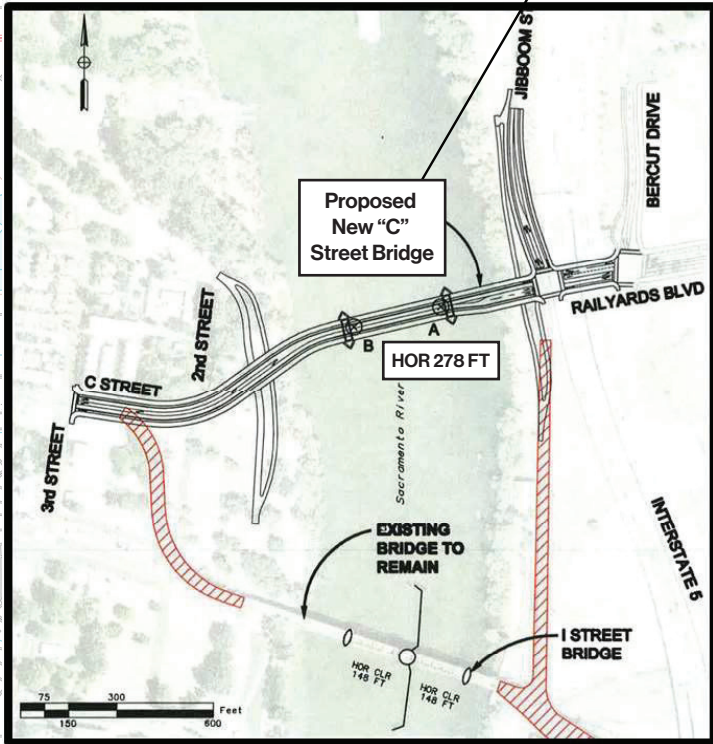
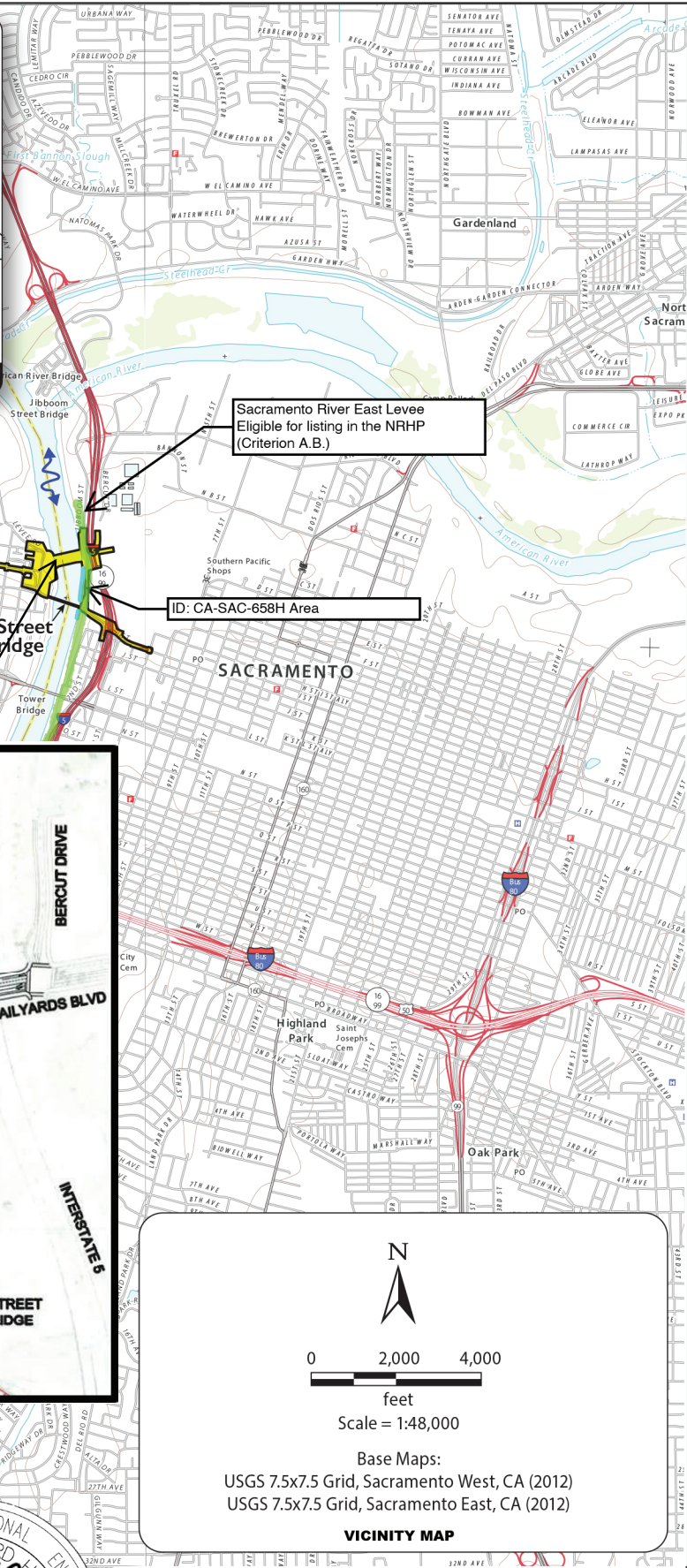
Mariners are requested to comment on the proposed navigation clearances, placement of a bridge protective system and other navigational safety issues. Interested parties are requested to express their views, in writing, on the proposed change in the horizontal clearance of the bridge project including its possible impacts to navigation.


Comments will be received for the record at the address noted in the header or via email [D11Bridges@uscg.mil](mailto:D11Bridges@uscg.mil) through February 28, 2025.

Map of location and plans attached.


Sincerely,

CARL T. HAUSNER  
Chief, Bridge Section  
Eleventh Coast Guard District  
By direction of the District Commander



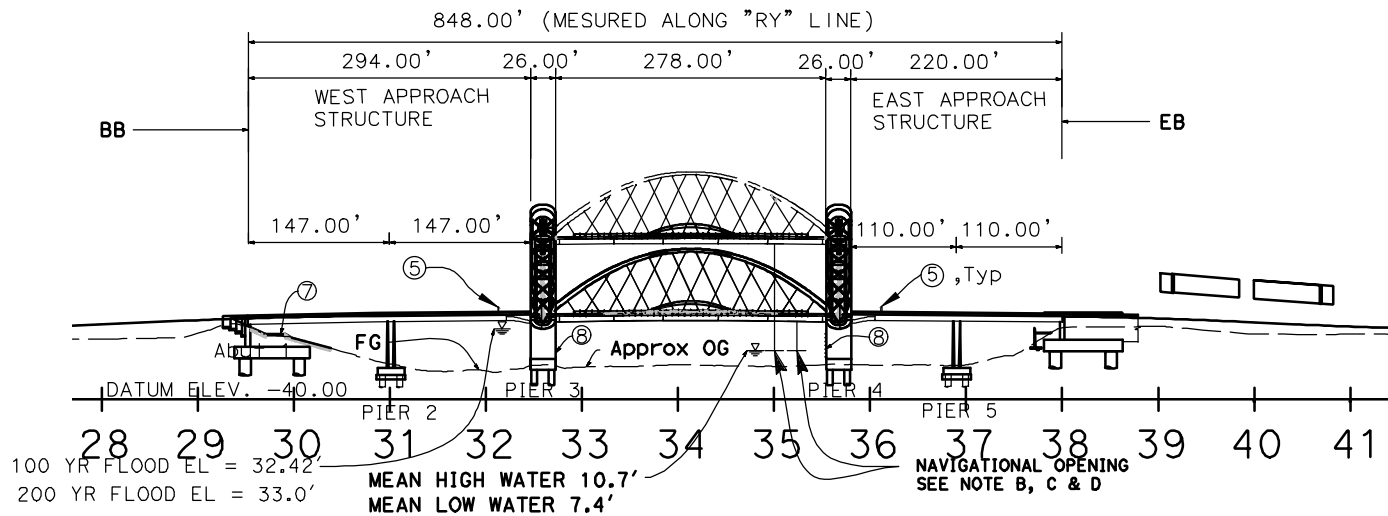
  
 0 2,000 4,000  
 feet  
 Scale = 1:48,000  
 Base Maps:  
 USGS 7.5x7.5 Grid, Sacramento West, CA (2012)  
 USGS 7.5x7.5 Grid, Sacramento East, CA (2012)  
**VICINITY MAP**

**CITY OF SACRAMENTO**  
**PROPOSED NEW "C" ST BRIDGE ("I" STREET REPLACEMENT)**  
**SACRAMENTO RIVER, MILE 69.5**  
**BETWEEN THE CITY OF SACRAMENTO, SACRAMENTO COUNTY AND**  
**THE CITY OF WEST SACRAMENTO, YOLO COUNTY, CALIFORNIA**

<b>CONSULTANT: MARK THOMAS</b> 701 UNIVERSITY AVE, #200 SACRAMENTO, CA 95825	 <b>MARK THOMAS</b>
<b>SHEET 1 OF 3</b>	<b>DATE 1/28/2025</b>



DATE 1/28/2025



**NOTES:**

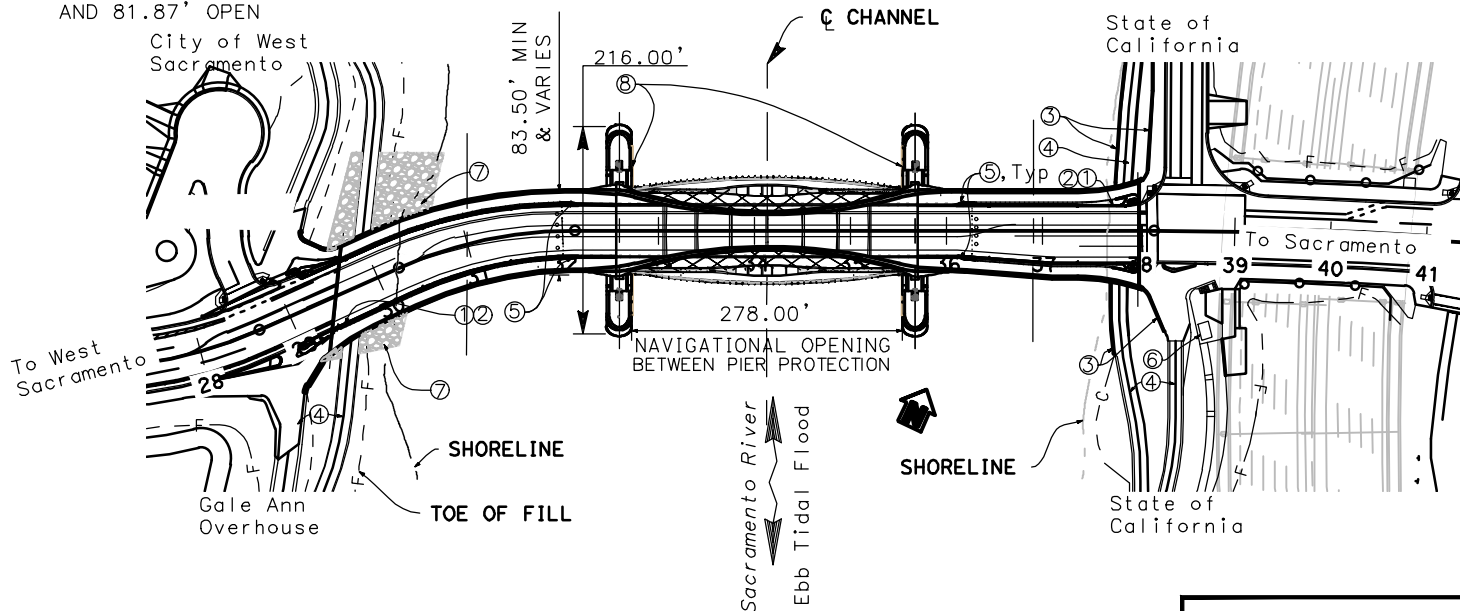
- A. DATUM: NAVD 88 (NAVD88= NGVD29 + 2.029')
- B. LOW STEEL ELEVATION 38.74' IN CLOSED POSITION, 92.57' IN OPEN POSITION
- C. 60.15' OF VERTICAL CLEARANCE OPEN POSITION OVER 100 YEAR FLOOD ELEVATION, 59.54' OVER 200 YEAR FLOOD ELEVATION
- D. 28.04' OF VERTICAL CLEARANCE OVER MEAN HIGH WATER CLOSED AND 81.87' OPEN

**ELEVATION**

1" = 200'

**NOTES:**

- 1. Paint Bridge Name
- 2. Paint Bridge Number
- 3. Retaining Wall
- 4. Bike Path
- 5. Traffic/Pedestrian Gate & Warning Signal
- 6. Operator House
- 7. Rock Slope Protection 1143 Cubic Yards, 257 Cubic Yards below Ordinary High Water Mark Elevation 19'
- 8. Pier Protection



**PLAN**

1" = 200'



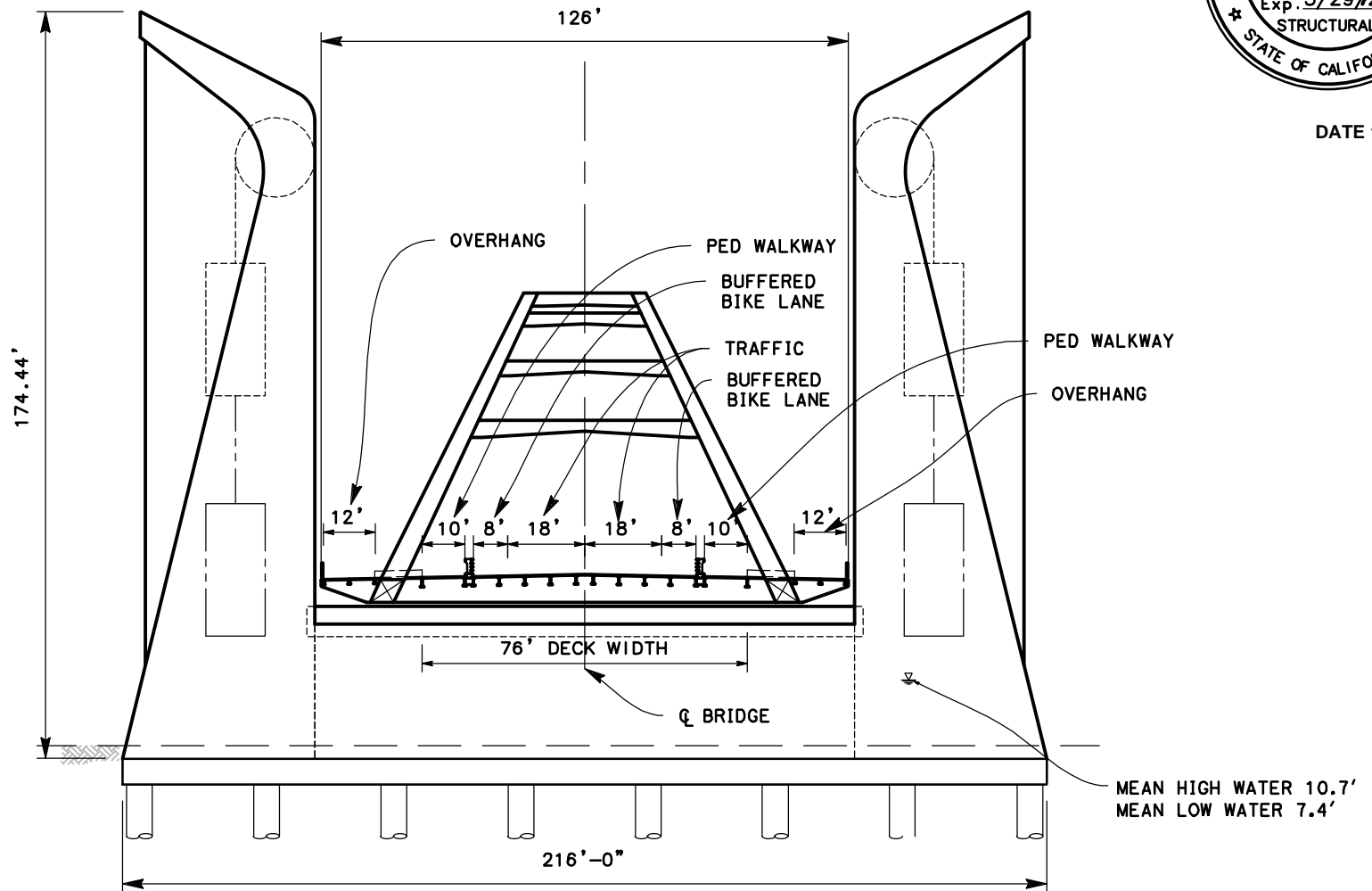
**CITY OF SACRAMENTO**  
**PROPOSED NEW "C" ST BRIDGE ("I" STREET REPLACEMENT)**  
**SACRAMENTO RIVER, MILE 59.5**  
**BETWEEN THE CITY OF SACRAMENTO, SACRAMENTO COUNTY AND**  
**THE CITY OF WEST SACRAMENTO, YOLO COUNTY, CALIFORNIA**

**CONSULTANT: MARK THOMAS**  
**701 UNIVERSITY AVE, #200**  
**SACRAMENTO, CA 95825**





DATE 1/28/2025



**NOTES:**

- A. DATUM: NAVD 88 (NAVD88= NGVD29 + 2.029')
- B. LOW STEEL ELEVATION 38.74' IN CLOSED POSITION, 92.57' IN OPEN POSITION
- C. 60.15' OF VERTICAL CLEARANCE OPEN POSITION OVER 100 YEAR FLOOD ELEVATION, 59.54' OVER 200 YEAR FLOOD ELEVATION
- D. 28.04' OF VERTICAL CLEARANCE OVER MEAN HIGH WATER CLOSED AND 81.87' OPEN

**TYPICAL SECTION AT PIER**

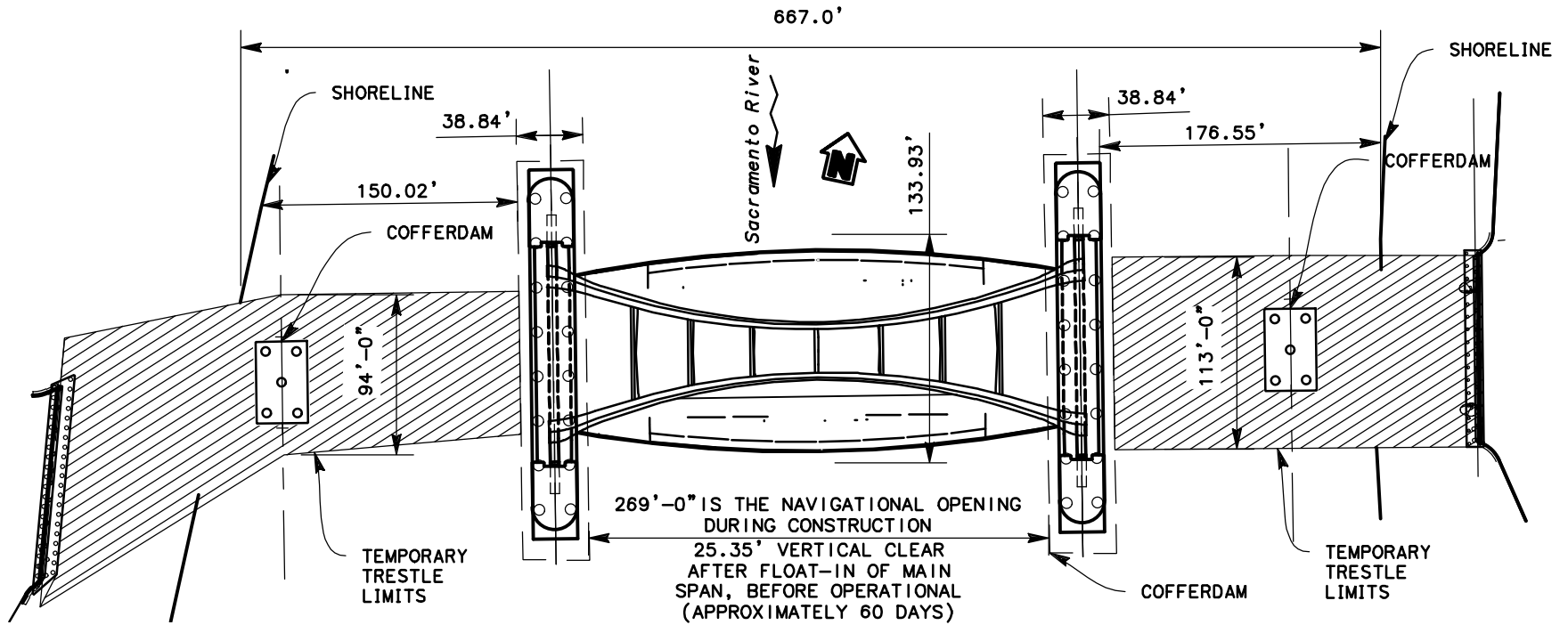
1"=40'



<p><b>CITY OF SACRAMENTO</b>  <b>PROPOSED NEW "C" ST BRIDGE ("I" STREET REPLACEMENT)</b>  <b>SACRAMENTO RIVER, MILE 59.5</b>  <b>BETWEEN THE CITY OF SACRAMENTO, SACRAMENTO COUNTY AND</b>  <b>THE CITY OF WEST SACRAMENTO, YOLO COUNTY, CALIFORNIA</b></p>	
<p><b>CONSULTANT: MARK THOMAS</b>  <b>701 UNIVERSITY AVE, #200</b>  <b>SACRAMENTO, CA 95825</b></p>	<p><b>MARK THOMAS</b></p>
<p><b>SHEET 3 OF 3</b></p>	<p>DATE 1/28/2025</p>



DATE 1/28/2025



**PLAN**

1" = 100'



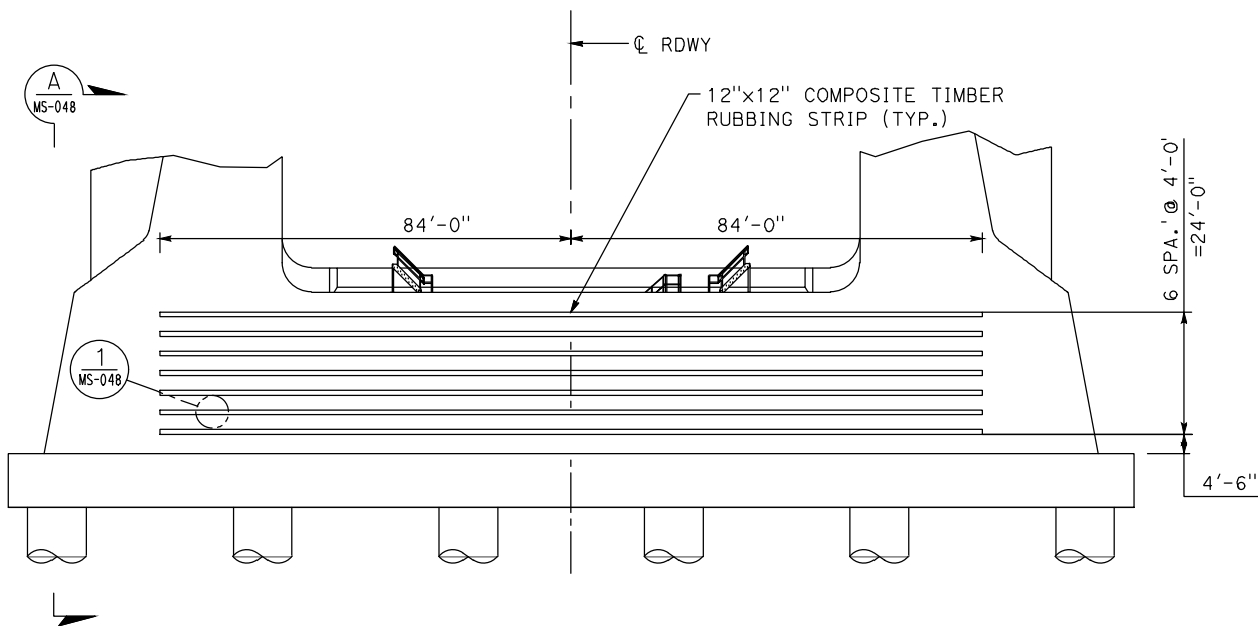
**TEMPORARY STRUCTURES ANTICIPATED DURING CONSTRUCTION**

**CITY OF SACRAMENTO  
PROPOSED NEW "C" ST BRIDGE ("I" STREET REPLACEMENT)  
SACRAMENTO RIVER, MILE 59.5  
BETWEEN THE CITY OF SACRAMENTO, SACRAMENTO COUNTY AND  
THE CITY OF WEST SACRAMENTO, YOLO COUNTY, CALIFORNIA**

**CONSULTANT: MARK THOMAS  
701 UNIVERSITY AVE, #200  
SACRAMENTO, CA 95825**

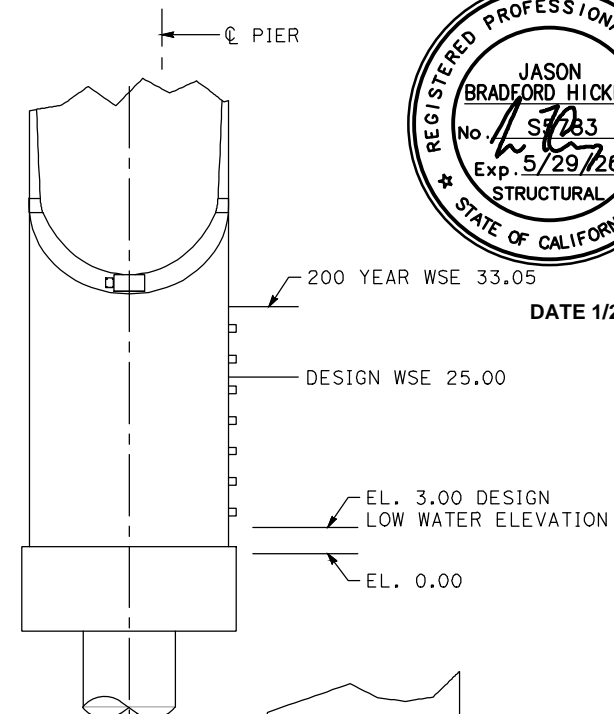


DATE 1/28/2025



**ELEVATION - LIFT SPAN TOWERS FENDER SYSTEM**

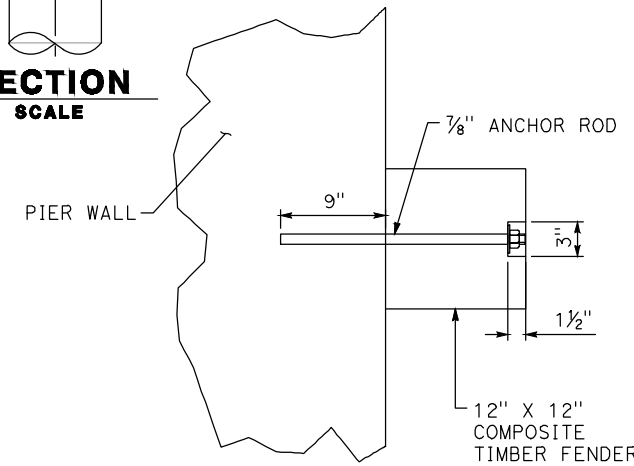
(PIER 3 LOOKING AHEAD STATION SHOWN, PIER 4 SYMM. ABOUT CL LIFT SPAN, EXCEPT AS NOTED)  
SCALE: **NO SCALE**



**SECTION**  
**NO SCALE**

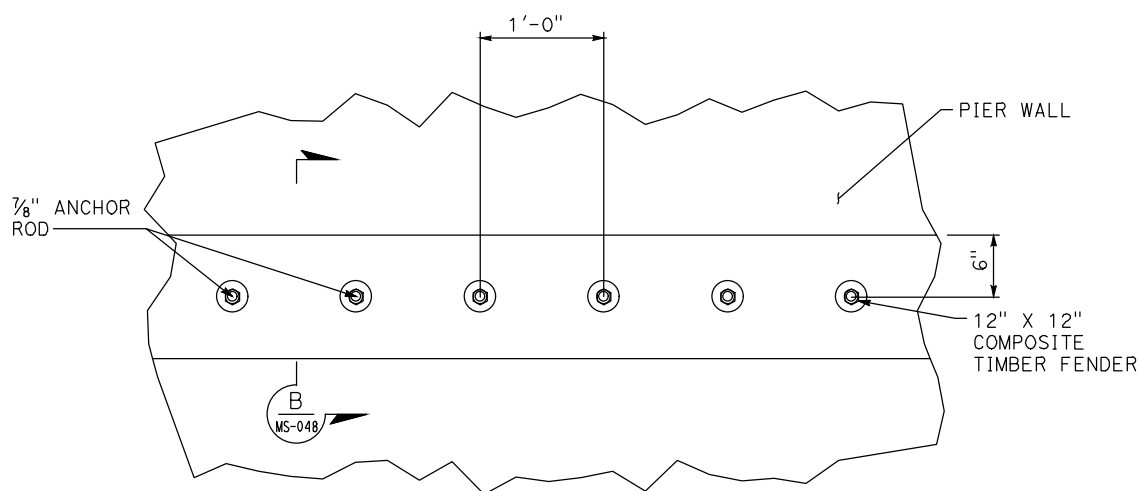


DATE 1/28/2025



**SECTION**  
**NO SCALE**

**PIER PROTECTIVE SYSTEM DETAILS**



**DETAIL**  
**NO SCALE**

<p><b>CITY OF SACRAMENTO</b>  <b>PROPOSED NEW "C" ST BRIDGE ("I" STREET REPLACEMENT)</b>  <b>SACRAMENTO RIVER, MILE 59.5</b>  <b>BETWEEN THE CITY OF SACRAMENTO, SACRAMENTO COUNTY AND</b>  <b>THE CITY OF WEST SACRAMENTO, YOLO COUNTY, CALIFORNIA</b></p>	
<p><b>CONSULTANT:</b> MARK THOMAS          701 UNIVERSITY AVE, #200          SACRAMENTO, CA 95825</p>	<p><b>MARK THOMAS</b></p>
<p>DATE 1/28/2025</p>	