



U.S. Department
of Homeland Security
**United States
Coast Guard**

LOCAL NOTICE TO MARINERS

District 8 MRS

Week: 30/09

Mississippi River System

LIGHT LIST VOLUME V
NOTICE NUMBER 30-09
July 29, 2009

LIGHT LIST REFERENCE: COMDTPUB P16502.5, Vol V, 2008 Edition.

CONTENTS: Rivers are listed in alphabetical order and are included only when there is information to report.

Broadcast Notice to Mariners Covered in this Edition

Originating Unit	Beginning BNM's	Ending BNM's
Sector Upper Mississippi River	0314-09 (UM)	0323-09 (UM)
Sector Lower Mississippi River	0254-09 (LM)	0269-09 (LM)
Sector Ohio Valley	0404-09 (OV)	0421-09 (OV)
OB DWB	0107-09 (OB)	0112-09 (OB)

COAST GUARD DISTRICT 8, WATERWAYS, (504) 671-2327, 7:00 a.m. until 3:30 p.m. (CST)

NIS WATCHSTANDER PHONE (703) 313-5900 24-HOURS A DAY

INTERNET ADDRESS <http://www.navcen.uscg.gov/>

2009 SPECIAL NOTICE TO MARINERS <http://www.navcen.uscg.gov/>

MISSISSIPPI RIVER SYSTEM LNM VIA INTERNET <http://www.navcen.uscg.gov/lnm/d8mrs>

MISSISSIPPI RIVER SYSTEM LIGHT LIST VIA INTERNET <http://www.navcen.uscg.gov/pubs/lightlist/v5complete.pdf>

ABBREVIATIONS

A through H

ACOE - Army Corps of Engineers
ADRIFT - Buoy Adrift
AICW - Atlantic Intracoastal Waterway
AI - Alternating
B - Buoy
BKW - Breakwater
bl - Blast
BNM - Broadcast Notice to Mariner
bu - Blue
C - Canadian
CHAN - Channel
CGD - Coast Guard District
C/O - Cut Off
CONT - Contour
CRK - Creek
CONST - Construction
DBN/Dbn - Daybeacon
DBD/DAYBD - Dayboard
DEFAC - Defaced
DEST - Destroyed
DISCON - Discontinued
DMGD/DAMGD - Damaged
ec - eclipse
EST - Established Aid
ev - every
EVAL - Evaluation
EXT - Extinguished

I through O

I - Interrupted
ICW - Intracoastal Waterway
IMCH - Improper Characteristic
INL - Inlet
INOP - Not Operating
INT - Intensity
ISL - Islet
Iso - Isophase
kHz - Kilohertz
LAT - Latitude
LB - Lighted Buoy
LBB - Lighted Bell Buoy
LHB - Lighted Horn Buoy
LGB - Lighted Gong Buoy
LONG - Longitude
LNM - Local Notice to Mariners
LT - Light
LT CONT - Light Continuous
LTR - Letter
LWB - Lighted Whistle Buoy
LWP - Left Watching Properly
MHz - Megahertz
MISS/MSNG - Missing
Mo - Morse Code
MSLD - Misleading
N/C - Not Charted
NGA - National Geospatial-Intelligence Agency

P through Z

PRIV - Private Aid
Q - Quick
R - Red
RACON - Radar Transponder Beacon
Ra ref - Radar reflector
RBN - Radio Beacon
REBUILT - Aid Rebuilt
RECOVERED - Aid Recovered
RED - Red Buoy
REFL - Reflective
RRL - Range Rear Light
RELIGHTED - Aid Relit
RELOC - Relocated
RESET ON STATION - Aid Reset on Station
RFL - Range Front Light
RIV - River
s - seconds
SEC - Section
SHL - Shoaling
si - silent
SIG - Signal
SND - Sound
SPM - Single Point Mooring Buoy
SS - Sound Signal
STA - Station
STRUCT - Structure
St M - Statute Mile

F - Fixed
 fl - flash
 Fl - Flashing
 G - Green
 HAZ - Hazard to Navigation
 HBR - Harbor
 HOR - Horizontal Clearance
 HT - Height

NO/NUM - Number
 NOS - National Ocean Service
 NW - Notice Writer
 OBSCU - Obscured
 OBST - Obstruction
 OBSTR - Obstruction
 Oc - Occulting
 ODAS - Anchored Oceanographic Data Buoy

TEMP - Temporary Aid Change
 TMK - Topmark
 TRLB - Temporarily Replaced by Lighted Buoy
 TRLT - Temporarily Replaced by Light
 TRUB - Temporarily Replaced by Unlighted Buoy
 W - White
 Y - Yellow

Additional Abbreviations Specific to this LNM Edition: None

SECTION I - SPECIAL NOTICES

This section contains information of special concern to the Mariner.

LOWER MISSISSIPPI RIVER - LOW WATER CONDITION

Low water conditions reportedly exist between Cairo, Illinois and Greenville, Mississippi, Mile 869.0 to Mile 537.2. The ACOE maintained depth and width may not be obtainable on all buoy lines. Mariners are urged to monitor gauge readings for safe navigation.

LNM: 0268LM

McCELLAN-KERR ARKANSAS WATERWAY - NAVIGATION CONFERENCE

Attached at the end of this LNM is an ACOE Little Rock, Navigation Notice regarding the 2009 Annual Navigation Conference.

LNM: ACOE

CLINCH/EMORY RIVERS - WAMS SURVEY

The Melton Hill Lake Users Association will host a meeting of all interested parties for the U.S. Coast Guard, regarding aids to navigation changes on the Clinch and Emory Rivers, on August 13, 2009, at 7:00 p.m. The location of this meeting is the Oak Ridge Civic Center, 1403 Oak Ridge Turnpike, Oak Ridge, Tennessee, 37830.

LNM: OV

ILLINOIS WATERWAY - CHANNEL CONDITION - UPDATE

Due to falling river levels, dropping back to flat pool elevations after a long term water event, it is highly recommended that barges not draft over 9 feet, anywhere on the waterway. This may be especially critical in the LaGrange Pool and specifically in the Beardstown area, vicinity of Miles 77, 42 and 40, where depths are expected to be 10 foot on or about August 1, 2009 and 9 foot on or about August 19, 2009. Mariners are urged to monitor their drafts and to use caution when transiting these areas.

LNM: 0324UM

SECTION II - DISCREPANCIES

This section lists all reported and corrected discrepancies related to Aids to Navigation in this edition. A discrepancy is a change in the status of an aid to navigation that differs from what is published or charted.

DISCREPANCIES (FEDERAL AIDS)

LLNR	Aid Name	Status	Chart No.	BNM Ref.	LNM St	LNM End
985	Spaniard Creek Light	MISSING		0239LM	29/08	
1610	Cuba Bottom Light	STRUCT DMGD		0237LM	28/09	
2205	Brodie Bend Light	TRUB		0199LM	24/09	
2310	Yell Bend Light	LT IMCH		0248LM	29/09	
2395	Victoria Bend Light	LT EXT		0262LM	30/09	
2415	Trulock Bend Light	LT EXT		0263LM	30/09	
4325	Donaldson Creek Light	TRUB		0167OV	15/09	
6300	Barry Island Light	MISSING		0599UM	49/08	
6795	Flat Bend Light	MISSING		0032UM	08/09	
6910	Bennetts Landing Light	MISSING		0032UM	08/09	
6925	Spring Branch Island Light	MISSING		0086UM	13/09	
6990	Circle Light	TRUB		0070UM	15/08	
7040	Peoria Heights Light	MISSING			02/09	

7040	Peoria Heights Light	TRUB/STRUCT MISSING	0297UM	28/09
7545	Sangamon Chute Upper Light	MISSING	0258UM	25/09
7570	Sugar Creek Island Daybeacon	MISSING	0039UM	10/09
7630	Grape Island Light	MISSING	0039UM	10/09
7640	Coal Creek Upper Daybeacon	MISSING	0039UM	10/09
7645	Coal Creek Island Daybeacon	MISSING	0258UM	25/09
7855	Little Blue Light	MISSING	0258UM	25/09
8115	Island 526 Light	MISSING	0039UM	10/09
9695	Lester Light	LT EXT	0415OV	30/09
10890	Chicot City Light	MISSING	0011LM	03/09
11625	Destruction Light	MISSING	0211LM	25/09
11640	Fairview Light	LT EXT	0202LM	25/09
11925	Lobdell Light	LT EXT	0214LM	25/09
15175	Edwards River Light	MISSING	0044UM	10/09
15260	Oquawka Upper Light	MISSING	0044UM	10/09
15305	Drew Chute Foot Light	MISSING	0190UM	20/09
16700	Foster Upper Light	MISSING	0217UM	22/09
25455	Walker Landing Light	MISSING	1087OV	01/09
27065	Cedar Branch Light	MISSING/TRUB	0007OV	02/08
29231.84	Gahagan Lower Daybeacon	TRUB	0131LM	20/08
29542	Barbin Daybeacon	TRUB		04/05
29866	Anderson Point Light	MISSING		20/09
30260	Bussell Light	LT EXT	0331OV	25/09
31730	Byrds Island Light	LT IMCH	0213OV	18/09
32395	Mccallies Light	LT EXT	0383OV	28/09
32510	Hurricane Creek Light	LT EXT	0204OV	18/09

DISCREPANCIES (FEDERAL AIDS) CORRECTED

LLNR	Aid Name	Status	Chart No.	BNM Ref.	LNM St	LNM End
27105	Rono Light	RELIGHTED			30/09	30/09
29875	Ilwaco Springs Light	RELIGHTED			21/09	30/09

DISCREPANCIES (PRIVATE AIDS)

LLNR	Aid Name	Status	Chart No.	BNM Ref.	LNM St	LNM End
1865	Jeffery Sand Dock Lights (2)	LT EXT		0065-09 LM	11/09	
1870	Sun Pipeline Lights (2)	LT EXT		0066-09 LM	11/09	
2100	Oakley Light	LT EXT		0189LM	24/09	
2585	Riceland Foods Lights (2)	LT EXT		283-08 LM	34/08	
2590	Oakley Dock Lights (2)	LT EXT		282-08	34/08	
3635	Tva Transmission Towers Lights (2)	LT EXT		0550-06 OV	34/06	
3640	Tva Transmission Towers Lights (2)	LT EXT		0551-06 06	34/06	
3780	Opryland U.S.A Lights (2)	LT EXT			34/08	
3795	Nashville Water Intake Lights (2)	LT IMCH			34/08	
3805	Holnam Dock Lights (2)	LT EXT			34/08	
3815	Kerr-Mcgee Dock Lights (2)	LT EXT			34/08	
3820	Cohen Terminal Lights (2)	LT EXT			34/08	
3825	Steiner-Liff Dock Lights (2)	LT EXT			34/08	
3830	Trinity Industries Dock Light	MISSING			34/08	
3845	Metro Riverfront Park Lights (2)	LT EXT			34/08	
3850	Ingram Dock Lights (2)	MISSING			34/08	
3865	Ashland Petroleum Co. Barge Terminal Light	LT IMCH			34/08	
3880	Lion Dock Lights (2)	LT EXT			34/08	
3925	Lafarge Terminal Light	LT IMCH			34/08	
3940	Ford Mooring Lights (2)	LT EXT			34/08	

3950	Hailey Lights (3)	LT EXT		47/08
3960	Hunter Marine Transport Dock Lights (2)	LT EXT		47/08
3985	Trinity Nashville Dock Light	LT EXT		47/08
3995	Riverview Marina Lights (2)	LT EXT		47/08
4120	Hopkinsville Elevator Dock Lights (2)	LT EXT		37/08
6170	Quantum Chemical Dock Lights (2)	LT EXT	0436-01 UM	31/01
6695	Continental Grain Company Light	LT EXT	0350-03 UM	24/03
7225	Cargo Carriers Dock Lights (2)	LT EXT		25/08
7235	Pekin Boat Club Breakwater Light	LT IMCH		25/08
7250	Shell Dock Lights (2)	LT EXT	0123-02 UM	16/02
7255	Adm Growmark Mooring Light	LT EXT	0122-02 UM	16/02
7260	Sours Grain Tramway Light	LT EXT	0279-03 UM	21/03
7265	Tomen Dock Light	LT EXT		25/08
7275	Midwest Grain Dock Lights (2)	LT EXT	0119-02 UM	16/02
7295	Adm Growmark Mooring Lights (3)	LT EXT	0281-03 UM	21/03
7460	Cargill Mooring Lights (2)	LT EXT	0284-03 UM	21/03
7620	Cargill Dock Lights (2)	LT EXT		35/08
7620	Cargill Dock Lights (2)	LT IMCH	0290-03 UM	21/03
7760	Adm Growmark Grain Elevator Lights (2)	LT IMCH		36/08
7770	Consolidated Grain & Barge Terminal Lights (2)	LT IMCH		36/08
8035	Jersey County Elevator Lights (3)	LT EXT		36/08
9550	Westvaco Dock Lights (2)	LT EXT	0012-06 OV	03/06
10110	Bunge Corporation Dock Lights (2)	LT EXT	0090-03 LM	08/03
10300	Cargill Dock Light	LT EXT	0361-01 LM	34/01
10390	Peavey Lights (2)	LT EXT	0398-02 LM	36/02
10395	Suburban Propane Dock Light	LT EXT	0396-02 LM	36/02
10415	Western Tar Products Dock Light	LT EXT	0394-02 LM	36/02
11990	Riverside Dock Lights (2)	LT EXT	0695-01 UM	40/01
12080	University Dock Light	LT EXT	0696-01 UM	40/01
12285	Farm Bureau Dock Light	LT EXT	0568-04 UM	45/04
13195	Bay State Dock Lights (2)	LT EXT	0569-04 UM	45/04
15515	Hubinger Landing Light	LT EXT	0198-05 UM	17/05
16380	Western Dock Lights (9)	LT EXT	0431-02 UM	33/02
16380	Western Dock Lights (9)	LT IMCH		34/08
16390	Adm-Growmark Dock Lights (4)	LT EXT	0776-01 UM	44/01
16430	Union Electric Coal Dock Lights (2)	LT EXT	0305-08 UM	34/08
16440	St. Louis Terminal Light	LT EXT		32/08
16445	Continental Cement Lights (2)	LT EXT	0305-08 UM	34/08
16490	Cargill Lights (3)	LT IMCH	3305-08 UM	34/08
16505	Peavey Company Dock Lights (3)	LT EXT	0305-08 UM	34/08
16530	Cahokia Marine Terminal Lights (2)	LT EXT	0305-08 UM	34/08
16540	Slay Bulk Terminal Lights (2)	LT EXT	0305-08 UM	34/08
16545	Peavey Lights (3)	LT EXT	3305-08 UM	34/08
16550	Eagle Marine Industries Light	LT IMCH	0305-08 UM	34/08
16560	Phillips Pipeline Lights (2)	LT EXT	0305-08	34/08
16565	Growmark Dock Lights (2)	LT EXT	0305-08 UM	34/08
16575	Eagle Marine Dock Lights (2)	LT EXT	0305-08 UM	34/08
16580	Valvoline Pier Lights (3)	LT EXT	0787-01 UM	44/01
16585	Savannah Foods Dock Lights (2)	LT EXT	0305-08	34/08
16600	J.H. Collier Barge Mooring Lights (2)	LT EXT	0305-08 UM	34/08
16605	Clark Oil Refining Dock Lights (4)	LT EXT	0305-08 UM	34/08
16609	Alcoa Foil Lights (2)	LT EXT	0305-08 UM	34/08
16615	Hci Chemtech Dock Lights (2)	LT EXT	0305-08 UM	34/08
16617	Semmaterials Terminal Lights (2)	LT EXT	0305-08 UM	34/08
16630	American Commercial Dock Light	LT EXT	0305-08 UM	34/08

16655	Bussen Terminal Light	LT EXT	0305-08 UM	34/08
16680	Union Electric Dock Lights (5)	LT EXT	0033-04 UM	09/04
16680	Union Electric Dock Lights (5)	LT EXT	0305-08 UM	34/08
16715	Barnhart Limestone Dock Light	MISSING	0840-01 UM	47/01
18700	Bunge Dock Lights (3)	MISSING/LT EXT		18/08
19175	Bartlett Dock Light	MISSING	0539-07	40/07
19185	St. Joseph L & P Dock Light	LT IMCH		17/08
19415	Leavenworth Water Intake Lights (2)	LT EXT	0104-07 UM	39/07
19460	Smoot Grain Dock Lights (2)	LT EXT	0385-07	39/07
19505	Board Of Public Utilities Light	LT EXT	0386-07 UM	39/07
19535	Public Utilities Intake Lights (3)	LT EXT		38/08
19660	Continental Grain Dock Lights (4)	LT EXT	0181-08 UM	24/08
19670	Brenntag Mid-South Dock Light	LT EXT	0181-08 UM	24/08
19695	Kansas City Power And Light Company Lights (2)	LT EXT	0460-07 UM	08/06
19695	Kansas City Power And Light Company Lights (2)	LT EXT	0181-08 UM	24/08
19715	American Oil Dock Lights (3)	LT EXT	0181-08 UM	24/08
19715	American Oil Dock Lights (3)	LT EXT	0460-07	39/07
26010	Acms Dock Lights (2)	LT EXT	0684-00 OV	37/00
26290	Boone County Sand And Gravel Lights (2)	LT EXT	0769-00 OV	40/00
28270	Electric Energy Lights (6)	LT EXT	0082-06 OV	10/06
29351	Alexandria Port Authority Bulk Dock Lights	LT EXT	0295-06 LM	38/06
30290	Lenoir City Terminal Lights (2)	DBN DEST		50/08

DISCREPANCIES (PRIVATE AIDS) CORRECTED

LLNR	Aid Name	Status	Chart No.	BNM Ref.	LNM St	LNM End
None						

PLATFORM DISCREPANCIES

Name	Status	Position	BNM Ref.	LNM St	LNM End
None					

PLATFORM DISCREPANCIES CORRECTED

Name	Status	Position	BNM Ref.	LNM St	LNM End
None					

SECTION III - TEMPORARY CHANGES and TEMPORARY CHANGES CORRECTED

This section contains temporary changes and corrections to Aids to Navigation for this edition. When charted aids are temporarily relocated for dredging, testing, evaluation, or marking an obstruction, a temporary correction shall be listed in Section IV giving the new position.

TEMPORARY CHANGES

LLNR	Aid Name	Status	Chart No.	BNM Ref.	LNM St	LNM End
7030	Drolls Point Upper Light	TRUB		0596UM	49/08	
7185	Kickapoo Bend Daybeacon	DISCONTINUED		0458UM	39/08	
10780	Concordia Bar Light	TRDBN		0106LM	15/09	
10890	Chicot City Light	DISCONTINUED FOR DREDGING		0290LM	46/08	
10965	La Grange Towhead Light	TRDBN		0107LM	15/09	
11077	American Bar Light	TRDBN		0149LM	18/09	
11140	Opossum Point Lower Light	TRDBN		0147LM	18/09	

11190	Shorts Light	TRDBN	0099LM	15/09
13010	Fisher Island Daybeacon	DISCONTINUED	0185UM	20/09
17240	Hanging Dog Bluff Light	TRDBN		22/09
20940	Gasconade River Daybeacon	DISCONTINUED	0518UM	38/07
26175	Pikes Peak Light	Other	0049OV	05/04
29866	Anderson Point Light	DISCONTINUED	0191UM	20/09

TEMPORARY CHANGES CORRECTED

LLNR	Aid Name	Status	Chart No.	BNM Ref.	LNM St	LNM End
11050	Vaucluse Bend Light	Reestablished			14/09	
11195	Chinaman Light	Reestablished			14/09	

PLATFORM TEMPORARY CHANGES

Name	Status	Position	BNM Ref.	LNM St	LNM End
None					

PLATFORM TEMPORARY CHANGES CORRECTED

Name	Status	Position	BNM Ref.	LNM St	LNM End
None					

SECTION V - ADVANCE NOTICES

This section contains advance notice of approved projects, changes to aids to navigation, or upcoming temporary changes such as dredging, etc. Mariners are advised to use caution while transiting these areas.

SUMMARY OF ADVANCED APPROVED PROJECTS

<u>Approved Project(s)</u>	<u>Project Date</u>	<u>Ref. LNM</u>
None		

<u>Advance Notice(s)</u>
None

SECTION VI - PROPOSED CHANGES

Periodically, the Coast Guard evaluates its system of aids to navigation to determine whether the conditions for which the aids to navigation were established have changed. When changes occur, the feasibility of improving, relocating, replacing, or discontinuing aids are considered. This section contains notice(s) of non-approved, proposed projects open for comment. SPECIAL NOTE: Mariners are requested to respond in writing to the District office unless otherwise noted (see banner page for address).

PROPOSED WATERWAY PROJECTS OPEN FOR PUBLIC COMMENT

<u>Proposed Project(s)</u>	<u>Closing</u>	<u>Docket No.</u>	<u>Ref. LNM</u>
None			

Proposed Change Notice(s)

Comments to be received by September 2, 2009

UPPER MISSISSIPPI RIVER

The U.S. Coast Guard is proposing the following changes to navigation on the Mississippi River:

Discontinue Village Creek Upper Daybeacon (LLNR 13670), Mile 662.2, RDB.

Change Village Creek Daybeacon (LLNR 13675), Mile 662.1, RDB, to display both up-bound and down-bound daybeacons.

LNLM: 08-09-39D

Comments to be received by August 12, 2009

ST. CROIX RIVER

The U.S. Coast Guard is proposing the following changes to navigation on the St. Croix River:

Discontinue Anderson Point Light (LLNR 29866), Mile 829.7, RDB.

LNM: 08-09-38D

**Comments to be received by August 12, 2009
UPPER MISSISSIPPI RIVER**

The U.S. Coast Guard is proposing the following changes to navigation on the Mississippi River:
Discontinue Merrimac Island Daybeacon (LLNR 12360), Mile 829.7, RDB.
Discontinue Merrimac Light (LLNR 12370), Mile 828.6, RDB.

LNM: 08-09-38D

**Comments to be received by September 2, 2009
UPPER MISSISSIPPI RIVER**

Change down bound NR to a TR on Genova Upper Daybeacon (LLNR 13545), Mile 680.1, RDB.

LNM: 08-09-41D

**Comments to be received by September 2, 2009
UPPER MISSISSIPPI RIVER**

Discontinue Wyalusing Daybeacon (LLNR 13880), Mile RDB.

LNM: 08-09-42D

Comments and recommendations regarding proposed aids to navigation changes should be submitted to:

Commander (dpw)
Eighth Coast Guard District
Attn: Federal Projects
500 Poydras Street, Room 1230
New Orleans, LA 70130-3310

Or by e-mail: d8localnoticefeedback@uscg.mil

All comments or recommendations should include the following information:

- a. Quantity, type, capacity, and value of vessels involved and the extent to which vessels transit the area seasonally, by day, and by night.
- b. If known, the type of navigational devices (e.g. compass, radio direction finder, radar, Loran, search lights, etc.) with which each vessel is equipped.
- c. The number of vessel passengers and/or type, quantity, and value of cargo involved.
- d. Chart section or graphic, as necessary to illustrate the comment or recommendation.

SECTION VII - GENERAL

This section contains information of general concern to the Mariners. Mariners are advised to use caution while transiting these areas.

**ALLEGHENY RIVER
MILE 14.1 - BRIDGE CONSTRUCTION**

New Pennsylvania Turnpike Bridge; Superstructure work is ongoing until spring 2010. Due to pier cofferdams on both sides of channel, a temporary navigation channel of 375 feet has been established. Mariners can contact the onsite workboat, ARB #1, at (412) 475-4643, for further information.

LNM: OB

**ARKANSAS RIVER
MILE 421.6 AND MILE 401.4 - L/D CLOSURES**

Commencing approximately 12:01 a.m., August 24, 2009 and continuing until approximately 11:59 p.m., September 6, 2009, the Newt Graham L/D 18, vicinity of Mile 421.6 and Chouteau L/D 17, vicinity of Mile 401.4, will be closed for inspection and repairs.

LNM: ACOE

MILE 203.5 AND MILE 173.0 - BRIDGE MAINTENANCE

Highway 7 Bridge; The vertical clearance is reduced 3 feet, due to a containment apparatus suspended below the low steel. Cleaning and painting is in progress during daylight hours, Monday through Saturday.

Highway 9 Bridge; The vertical clearance is reduced 3 feet, due to a containment apparatus suspended below the low steel. Cleaning and painting is in progress during daylight hours, Monday through Saturday.

LNM: OB

**MILE 127.0
LITTLE MAUMELLE RIVER
MILE 0.6 - BRIDGE PROPOSAL**

Proposed Little Maumelle Pedestrian Bridge; An application has been received for approval of plans for the subject bridge.

MINIMUM NAVIGATION CLEARANCES:
Proposed

MILE 127.0
LITTLE MAUMELLE RIVER
MILE 0.6 - BRIDGE PROPOSAL

Horizontal: 201.8 feet measured normal to axis of the channel.
Vertical: 39.8 feet above 2% flowline elevation 249.8 feet, mean sea level.

SOLICITATION OF COMMENTS:

Interested parties are requested to express their views, in writing, on the proposed replacement bridge. Give sufficient details to establish a clear understanding of the reasons for support or opposition to the proposal. Comments will be received for the record at the office of the Commander (dwb), Eighth Coast Guard District, 1222 Spruce Street, St. Louis, Missouri 63103-2832, through August 24, 2009.
See attached plan drawings.

LNM: OB

BEAVER RIVER
MILE 0.3 - BRIDGE MAINTENANCE

Rochester-West Bridgewater Bridge; Vertical clearance is reduced to 31 feet above normal pool elevation due to containment system.

LNM: OB

CLINCH RIVER
MILE 51.1 - 49.0 - ROWING EVENTS

Attached as an enclosure to this LNM, is a schedule of events for the Oak Ridge Rowing Association, to be held between approximate Miles 51.1 and 49.0. Mariners are urged to exercise caution in this area during scheduled events.

LNM: ACOE

EMORY RIVER
MILE 3.5 - MILE 0.0 - COTP ADVISORY

The COTP Ohio Valley has issued a Safety Advisory from Mile 3.5 to Mile 0.0. Vessels will have difficulty safely navigating this area, due to the hazards associated with fly ash cleanup operations and the shallow river depths. Hazard buoys have been placed at Miles 0.0, 2.0, 3.0 and 3.5. The contractors floating plant will consist of 3 hydraulic dredge platforms, an excavator barge platform and a crane barge. The floating plant will monitor VHF-FM Channel 10. Multiple movements of the contractors floating plant is anticipated to facilitate debris removal. Mariners are urged to exercise extreme caution when transiting the area.

LNM: 01200V

ELK RIVER
MILE 0.0 - BRIDGE MAINTENANCE

Kanawha Boulevard Bridge; The vertical clearance is reduced to 36 feet, due to a cable-suspended platform extending 2 feet below the low steel of the bridge. A paint work crew is on the span from 7:00 a.m. until 7:00 p.m., daily, until August 22, 2009. Contact the work site supervisor on cell (410) 371-7683, for status.

LNM: OB

ILLINOIS WATERWAY
MILE 254.1 - BRIDGE REPAIR

Chessie Railroad Drawbridge; Contractor is repairing right descending sheer fence. Work will take place Monday through Saturday, from 6:00 a.m. until 6:00 p.m. Barge will move with 30-minutes advance notice by contacting the M/V LAKES AND RIVERS WORK BOAT 1 via VHF-FM Channel 16. Mariners are advised to transit the bridge with caution.

LNM: OB

MILE 252.71 - BRIDGE REPLACEMENT

Seneca Replacement Bridge; Cofferdam work is underway on both sides of the main channel. Horizontal clearance is reduced to 270 feet. If needed, the workplant will move on 45-minute advanced notice, by contacting M/V EKS 6 via VHF-FM Channel 16.

LNM: OB

MILE 230.8 - MILE 230.3 - STRIKE REMOVAL/DREDGE OPERATION

Continuing until approximately August 10, 2009, the M/V LASALLE is conducting dredge operations/strike removal between approximate Miles 230.8 and 230.3, Starved Rock Lower. Work will be conducted from 7:00 a.m. until 7:30 p.m., Monday through Saturday. The M/V LASALLE will monitor VHF-FM Channels 13, 16 or 82. North bound tows are urged to contact the dredge 30-minutes prior to arrival in the area. Mariners are urged to transit the area at their slowest safe speed to minimize their wake and proceed with caution.

LNM: ACOE

MILE 222.8 - BRIDGE MAINTENANCE

Peru Highway Bridge; Vertical clearance is reduced to 59 feet, above pool stage, due to installation of a containment system.

LNM: OB

MILE 215.6 - MILE 215.5 - DREDGE OPERATION - UPDATE

The M/V LASALLE has completed dredge operations between approximate Miles 215.6 and 215.5.

LNM: 0307UM

MILE 181.9 - BRIDGE MAINTENANCE

Atchison Topeka and Santa Fe Railroad Bridge; Vertical clearance has been reviewed. Minimum vertical clearance is 58.8 feet above normal pool.

LNM: OB

MILE 166.0 - MILE 165.8 - DREDGE OPERATION

Continuing until approximately December 31, 2009, the M/V MIDWEST II will be conducting dredging operations between approximate Miles 166.0 and 165.8. Work will be conducted from 6:30 a.m. until 4:30 p.m., Monday through Friday. Mariners are requested to contact the M/V MIDWEST II via VHF-FM Channels 6 or 13. The dredge requests 30-minutes prior to transiting, for passing instructions. Recreational boaters are advised to avoid the area as construction equipment and submerged obstructions may create hazards. Increased traffic can be anticipated in the area due to construction crews exiting East Port Marina Mile 164.2. Mariners are urged to transit the area at their slowest safe speed to minimize their wake and to proceed with caution after passing arrangements have been made.

LNM: 0279UM

MILE 164.4 - AIDS TO NAVIGATION

A nun buoy and a can buoy have been reported missing in the vicinity of Mile 164.4. Mariners are urged to exercise caution when transiting the area.

LNM: 0313UM

MILE 88.8 - BRIDGE CLOSURE

Beardstown Railroad Bridge; The span is scheduled to be closed-to-navigation from 8:00 a.m., July 27, 2009 until 8:00 p.m., July 29, 2009. After that period and for 24-hours, the span will be in the open-to-navigation position to pass vessel traffic. Thereafter, the draw span openings will be coordinated with rail traffic closures and efforts to return the bridge to normal operation by August 2, 2009.

LNM: OB

MILE 61.4 - BRIDGE REPAIRS

Norfolk & Western Railroad Drawbridge; A 1-hour advance notice, for a bridge opening is required due to ongoing bridge deck repairs.

LNM: OB

MILE 56.0 - SAFETY ADVISORY - UPDATE

The COTP Upper Mississippi River has established a Safety Advisory in the vicinity of the Florence Highway Drawbridge, Mile 56.0. The right descending protection cell is partially submerged and off-station. Mariners shall use extreme caution when transiting the bridge. Any contact with the bridge or protection cells shall be reported to U.S. Coast Guard Sector Upper Mississippi River immediately via VHF-FM Channel 16, or by calling (314) 269-2332.

LNM: 0315UM

MILE 56.0 - BRIDGE CELL DAMAGE

Florence Highway Drawbridge; Upstream right descending cell is extensively damaged. Downbound vessels must ensure that when transiting the span they do not contact the cell. Further contact could push the cell into the bridge pier. Extreme caution is advised.

LNM: OB

MILE 40.0 - DREDGE OEPRATION

Continuing until further notice, the Dredge GOETZ will be conducting dredging operations in the vicinity of Mile 40.0. Work will be conducted 24-hours a day, Monday through Friday. Mariners are requested to contact the M/V GOETZ via VHF-FM Channels 14 or 16, at least 30-minutes prior to arrival for passing instructions. Mariners are urged to use extreme caution in the area and proceed at their slowest safe speed to minimize wake.

LNM: 0321UM

KANAWHA RIVER

MILE 79.0 - MILE 78.0 - DIVE OPERATION/MUSSEL SURVEY

Continuing until approximately August 31, 2009, dive operations for a mussel survey will be conducted between approximate Miles 79.0 and 78.0. The floating plant will consist of the Dive Vessel MUSSEL BOUND. The Dive Vessel MUSSEL BOUND will monitor VHF-FM Channels 13 or 16. Mariners are urged to use caution in the area and proceed at their slowest safe speed to minimize wake.

LNM: 0406OV

MILE 57.6 - MILE 56.7 - MARINE EVENT/WATERWAY CLOSURE

On July 31, 2009, from 10:30 a.m. until 3:00 p.m. and on August 1, 2009 and August 2, 2009, from 6:30 a.m. until 5:30 p.m., the City of Charleston, West Virginia, will sponsor the Toyota Governors Cup Jet Ski Races will be held between Miles 57.6, the I-64 Bridge and Mile 56.7, C/O Railroad Bridge. The COTP Ohio River has closed the river for these events. Mariners approaching the Charleston, West Virginia, during the event times, should contact the U.S. Coast Guard Patrol Commander via VHF-FM Channels 13 or 16.

LNM: MSU
HUNT

MILE 46.0 - MILE 31.1 - CORE DRILLING/SEDIMENT SAMPLING

Commencing approximately July 27, 2009 and continuing until approximately July 31, 2009, Normandeau Associates Incorporated will conduct core drilling and sediment sampling, beginning at Mile 46.0 and working downstream to Mile 31.1. Some of the work will be inside of the navigation channel. Work will be conducted from 8:00 a.m., until 5:00 p.m., Monday through Friday. During non-working hours, the contractors floating

MILE 46.0 – MILE 31.1 - CORE DRILLING/SEDIMENT SAMPLING

plant will be moored at Lou Wendell Marina, in St. Albans and lighted accordingly. The contractors floating plant will consist of an unnamed workboat and a self-propelled sampling barge. The workboat will monitor VHF-FM Channels 13 or 16. Mariners are urged to use extreme caution in the area and proceed at their slowest safe speed to minimize wake.

LNM: ACOE

KENTUCKY RIVER

MILE 66.4 - BRIDGE REPAIR

St. Clair Street (Singing) Bridge; The bridge span is undergoing minor steel and deck repairs through August 15, 2009. There is no impact to navigation.

LNM: OB

LOWER MISSISSIPPI RIVER

MILE 921.5 - DREDGE OPERATION

Continuing until further notice, the Dredge PONTCHARTRAIN is conducting dredge operations in the vicinity of Mile 921.5, Hickman Harbor. Mariners are urged to transit the area with caution.

LNM: 0397OV

MILE 737.0 - MILE 735.0 - MARINE EVENT/RIVER CLOSURE

On August 2, 2009, from 11:00 a.m. until 12:00 noon, from 1:00 p.m. until 4:00 p.m. and from 5:00 p.m. until 7:00 p.m., the Powerboat Superleague Challenge races will be held between Miles 737.0 and 735.0. The COTP Lower Mississippi River has established a Safety Zone for this event. No vessels may enter or remain within this Safety Zone unless specifically authorized by the COTP. Mariners may contact the U.S. Coast Guard Lower Mississippi River via VHF-FM Channel 16, for additional information.

LNM: 0260LM

MILE 644.3 - AIDS TO NAVIGATION

A nun buoy has been reported not properly marking the channel, in the middle of the channel and diving, in the vicinity of Mile 644.3. Mariners are urged to exercise caution when transiting the area.

LNM: 0230LM

MILE 612.7 - MILE 612.3 - AIDS TO NAVIGATION

Two can buoys have been reported missing between approximate Miles 612.7 and 612.3. Mariners are urged to exercise caution when transiting the area.

LNM: 0267LM

MILE 584.0 - DREDGE OPERATION

Continuing until further notice, the Dredge INTEGRITY is conducting dredge operations in the vicinity of Mile 584.0, Rosedale Harbor. The Dredge INTEGRITY will monitor VHF-FM Channels 7 or 16, for passing arrangements. Mariners are urged to exercise caution when transiting the area.

LNM: 0242LM

MILE 435.7 - BRIDGE MAINTENANCE

I-20 Highway Bridge; Until December 31, 2009, a 12-foot wide section of scaffolding will be hanging down a maximum of 6 feet approximately 220 feet out from each navigation pier thus providing for a vertical clearance at the scaffolding of 110.2 feet, above zero on the Vicksburg Gauge. The mid 400 feet of the channel is clear of scaffolding.

LNM: OB

MILE 264.0 - DREDGE OPERATION

Continuing until approximately September 8, 2009, dredging operations will be conducted at the Big Cajun II Power Plant approximate Mile 264.0, RDB. Work will be conducted 24-hours a day, 7-days a week. No dredge equipment, associated with this operation will be in the water and this operation will not impact safe navigation in the area.

LNM: 0173D8

UPPER MISSISSIPPI RIVER

MILE 855.0 - MILE 854.0 - MARINE EVENT

Continuing until approximately August 31, 2009, water ski shows will take place from 2:00 p.m. until dusk between approximate Miles 855.0 and 854.0. Mariners are urged to exercise caution when transiting the area during these events.

LNM: UM

MILE 852.7 - BRIDGE MAINTENANCE

Washington Avenue Highway Bridge; The vertical clearance may be reduced 3 feet below the low steel due to safety netting and containment during rehab work. A vertical clearance of 67 feet above normal pool will be maintained at all times. Contact job supervisor cell (612) 270-8622 or Hennepin County (612) 282-1714, for status.

LNM: OB

MILE 843.2 - BRIDGE PROTECTION CELL

The right descending protection cell of the Lexington Avenue I-35E Bridge (LLNR 12188) in the vicinity of Mile 843.2, is damaged and protruding

MILE 843.2 - BRIDGE PROTECTION CELL

into the channel approximately 30 feet. A white flashing buoy has been placed directly in front of the protection cell. Mariners are urged to exercise caution in the area.

LNM: 0281UM

MILE 832.5 - BRIDGE WORK

I-494 (Wakota) Highway Bridge; A form traveler is setting channel span segments over the channel and is approximately 160 feet from the left descending pier. Vertical clearance is reduced to 50 feet above normal pool. Horizontal clearance from the right descending pier to the form traveler is 215 feet. The channel is clear of floating plant. Mariners may contact Lunda Construction M/V GRACIE M (WCW 4398) on VHF-FM Channels 13 or 16.

LNM: OB

MILE 830.3 - BRIDGE REMOVAL

St. Paul Park Railroad And Highway Drawbridge; Spans have been removed but piers remain in the river. The channel piers and pivot pier are marked with red, retro-reflective panels and highly visible white panels. Piers outside of the channel are marked with highly visible white panels only.

LNM: OB

MILE 824.3 - DREDGE OPERATION

Continuing until further notice, the Dredge BRAND MARIE will conduct dredging operations in the vicinity of 824.3, along the left descending buoy line. Work will be conducted from 7:00 a.m. until 7:00 p.m., Monday through Friday. Mariners are urged to contact the M/V BRAND MARIE on VHF-FM Channels 13 or 16, 30-minutes prior to transiting the area for passing instructions. Mariners are urged to transit the area at their slowest safe speed to minimize wake.

LNM: 0295UM

MILE 791.9 - MILE 791.3 - MARINE EVENT/SAFETY ZONE

On August 1, 2009 and August 2, 2009, from 3:00 p.m. until 6:00 p.m., each day, the River City Days, a boat parade, water ski show and rubber duck race, will be held between approximate Miles 791.9 and 791.3. A boat parade will be held August 1, 2009, from 9:00 p.m. until 9:30 p.m. A Safety Zone has been established in the area for this event.

LNM: UM

MILE 745.5 - DREDGE OPERATION - UPDATE

The Dredge GOETZ has completed dredging operations in the vicinity of Mile 745.5.

LNM: 0289UM

MILE 700.0 - MILE 582.0 - MARINE EVENT

Continuing until August 1, 2009, from 8:00 a.m. until 3:00 p.m., daily, the Great River Rumble, a canoe and kayak boat trip, will be held between Miles 700.0 and 582.0. This event will consist of 75 to 80 canoes/kayaks traveling along the waterway. Several stops along the route are anticipated. Mariners are urged to exercise caution when transiting the area.

LNM: COTP UM

MILE 690.1 - DREDGE OPERATION

Continuing until further notice, the Dredge KLINE is conducting dredging in the vicinity of Mile 690.1. Work will be conducted from 6:00 a.m. until 6:00 p.m., Monday through Friday. The Dredge KLINE requests 30-minutes advance notice of arrival via VHF-FM Channels 7, 13, 14 or 16, to coordinate passing instructions. Mariners are urged to transit the area at their slowest safe speed to minimize their wake.

LNM: 0304UM

MILE 664.0 - MILE 663.5 - FIREWORKS DISPLAY/MARINE EVENT

On August 8, 2009, from 9:15 p.m. until 10:45 p.m., the Lansing Fish Days, a boat parade and fireworks display will be held between approximate Miles 664.0 and 663.5. On August 9, 2009, from 2:30p.m. until 3:00 p.m., a rubber duck race will be held. Mariners are urged to exercise caution when transiting this area.

LNM: UM

MILE 608.2 - MILE 608.1 - CHANNEL CONDITION - UPDATE

Shoaling was previously reported between approximate Miles 608.2 and 608.1, approximately 50 feet into the channel, off the red buoy line. The buoys in the area have been reset in approximately 10 feet of water. Shoaling reported in the area was not found.

LNM: 0309UM

MILE 476.0 - DREDGE OPERATION

Continuing until approximately August 11, 2009, the M/V DAVENPORT or the M/V MUSCATINE is conducting strike removal/dredge operations in the vicinity of Mile 476.0, Horse Island. Work will be conducted from 7:00 a.m. until 5:00 p.m., 7-days a week. The M/V DAVENPORT or the M/V MUSCATINE will monitor VHF-FM Channels 13, 16 or 82. The dredge requests 30-minutes advance notice of passing. Mariners are urged to use extreme caution in the area and proceed at their slowest safe speed to minimize wake.

LNM: ACOE

MILE 403.1 - BRIDGE REPAIR

MILE 403.1 - BRIDGE REPAIR

Burlington Railroad Drawbridge; A crane and material barge are located at the left descending downstream protection cell and sheer fence to make repairs. Work will be conducted from 7:00 a.m. until 5:00 p.m., Monday through Friday. The floating plant will move for passing vessel traffic with 1-hour advance notice. Contact M/V DENISE RAE II via VHF-FM Channels 11 or 13, for status.

LNM: OB

MILE 363.6 - DREDGE OPERATION

Continuing until approximately August 11, 2009, the M/V MOLINE and the M/V CLINTON are conducting dredging operations/strike removal in the vicinity of Mile 363.6, L/D 19 Lower. Work will be conducted from 7:00 a.m. to 5:00 p.m., daily. The M/V MOLINE and the M/V CLINTON will monitor VHF-FM Channels 13, 16 or 82 and requests 30-minutes advance notice of passage. Mariners are urged to transit the area at their slowest safe speed and to proceed with caution.

LNM: ACOE

MILE 327.2 - BRIDGE MAINTENANCE

Quincy Bayview Bridge; Vertical clearance is reduced to 57 feet above normal pool elevation, due to containment system.

LNM: OB

MILE 243.0 - DREDGE OPERATION

Continuing until further notice, the Dredge POTTER is operating in the vicinity of Mile 243.0. Work will be conducted 24-hours a day, 7-days a week. The Dredge POTTER will monitor VHF-FM Channels 12, 13 or 16, for additional information and passage instructions. The dredge requests 30-minutes advance notice of passage. Mariners are urged to use extreme caution in the area and proceed at their slowest safe speed to minimize wake.

LNM: 0296UM

MILE 215.0 - FIREWORKS DISPLAY/RIVER CLOSURE

On August 8, 2009, from 9:00 p.m. until 10:00 p.m., the New Piasa Chatauqua Fireworks Display will be held in the vicinity of Mile 215.0. The COTP Upper Mississippi River has closed the river for this event. This is a land based event. Mariners are urged to exercise caution when transiting the area.

LNM: UM

MILE 200.8 - L/D CLOSURE

Continuing until approximately August 23, 2009, the Melvin Price L/D (600-foot auxiliary chamber) will be closed for maintenance. The main 1,200-foot chamber will remain open to pass traffic.

LNM: ACOE

MILE 179.8 - MILE 179.4 - FIREWORKS DISPLAY/RIVER CLOSURE - UPDATE

Continuing until August 1, 2009, from 9:00 p.m. until 10:00 p.m., the Live on the Levee fireworks display will be held nightly following the concerts, every other weekend, in the vicinity of Mile 179.6. The COTP Upper Mississippi River has closed the river between Miles 179.8 and 179.4, for these events.

LNM: COTP UM

MISSOURI RIVER

MILE 628.0 - MILE 616.0 - MARINE EVENT

On August 1, 2009, from morning until night, the Wild Hare 12-hour Adventure Race, a canoe race, will be held between approximate Miles 628.0 and 616.0. Mariners are urged to exercise caution in the area.

LNM: COTP UM

MILE 613.9 - BRIDGE CONSTRUCTION

I-80 Companion Bridge; Work barges constructing the superstructure are working in the 250 foot main channel and will move with 30-minutes advance notice. Mariners should contact the onsite Workboat, SAMMY J, for more information.

LNM: OB

MILE 612.2 - COFFERDAM CONSTRUCTION

South Omaha Bridge; Cofferdam construction is underway on the left descending navigation pier. Horizontal clearance in channel is reduced to 235.0 feet.

LNM: OB

MILE 367.5 - MILE 29.0 - MARINE EVENT

Commencing August 4, 2009 and continuing until August 5, 2009, the 4rd Annual Missouri River 340 is being held between approximate Miles 347.5 and 29.0. This event will involve canoe and kayaks racing down river from Kansas City to St. Charles County. The hours for this event are from 5:00 a.m. until 9:00 p.m., daily. Eight safety boats will be stationed along the event route. Mariners are urged to use extreme caution when transiting the area.

LNM: UM

MILE 364.8 - PIER CONSTRUCTION

Paseo Bridge; Pier construction within a cofferdam is being performed outside of the left descending navigation channel. Work will be conducted

MILE 364.8 - PIER CONSTRUCTION

from 6:30 a.m. until 6:30 p.m., Monday through Saturday. Contact the M/V L.P. WRIGHT via VHF-FM Channels 13 or 16.

LNM: OB

MILE 67.6 - BRIDGE MAINTENANCE

Washington Bridge; Vertical clearance is reduced to 71 feet above zero on the W.B. gage at Washington, Missouri, due to installation of a containment system.

LNM: OB

MILE 52.0 - CHANNEL CONDITION

Shoaling has been reported in the vicinity of Mile 52.0, RDB. The area is reportedly 1,000 feet in length and extending approximately 300 feet into the channel. The center point is reportedly Tavern Rock Daybeacon (LLNR 21200), vicinity of Mile 51.9. Mariners are urged to exercise caution when transiting the area.

LNM: 0323UM

MONONGAHELA RIVER

MILE 63.2 - BRIDGE REMOVAL

Jones & Laughlin Bridge; Continuing until August 1, 2009, from 7:00 a.m. until 3:30 p.m., Monday through Friday, crane and deck barges will be positioned at various locations in the channel while removing the bridge and can be moved with 1-hour advance notice. Mariners may contact the onsite workboat M/V MINI 2 or M/V ANNE MARIE via VHF-FM Channels 12 or 13, for more information.

LNM: OB

MILE 59.1 - BRIDGE CONSTRUCTION

New Pennsylvania Turnpike Bridge; Due to cofferdam work, channel width is reduced to 345 feet and mariners are requested to proceed at slowest safe speed. Mariners may contact the onsite workboat M/V MISS TINA LOU on VHF-FM Channels 13, 16 or 18, for more information.

LNM: OB

MILE 38.0 - BRIDGE MAINTENANCE - UPDATE

Donora-Monessen; A containment system hangs 3 feet below the low steel. A vertical clearance of 44 feet above normal pool will be maintained at all times. Contact the work supervisor cell (724) 333-3595, for status.

LNM: OB

MILE 9.6 - BRIDGE MAINTENANCE

Rankin Bridge; A paint containment system is in place and low steel is reduced to 42.5 feet until work completion scheduled for October 1, 2010.

LNM: OB

MUSKINGUM RIVER

MILE 28.7 - DREDGE OPERATION

Continuing until approximately September 1, 2009, the Cutter Head Dredge DRAGON will be operating in the vicinity of Mile 28.7, RDB, American Power Facility. Work will be conducted from 7:00 a.m. until 5:00 p.m., Monday through Thursday. During non-working hours, the contractors floating plant will be moored at the work-site and lighted accordingly. Dredged material will be transported to an upland disposal site. The Dredge DRAGON will monitor VHF-FM Channel 16. Mariners are urged to exercise caution when transiting the area.

LNM: ACOE

OHIO RIVER

MILE 3.3 - BRIDGE MAINTENANCE

Mckees Rocks Bridge; Due to a containment system, vertical clearance in the navigation span is reduced to 90.6 feet above pool stage.

LNM: OB

MILE 6.2 AND MILE 13.3 - L/D CLOSURE/DELAYS

The ACOE Pittsburgh District has placed the main chambers at Emsworth L/D, vicinity of Mile 6.2 and the Dashields L/D, vicinity of Mile 13.3, out of service for repairs. The auxiliary chambers at both locations remain open. Mariners can expect extremely long delays, especially for recreational boaters trying to lock through. Commercial passenger vessels and tows will have priority for lockages, as usual. Delays for recreational boaters will range from a few hours to more than 10-hours. Mariners are urged to exercise caution when transiting the area.

LNM: 0367OV

MILE 25.7 - BRIDGE MAINTENANCE

Pittsburgh And Lake Erie (CSX) Railroad Bridge; The vertical clearance is reduced to 65 feet above normal pool by cables of a containment installed 4 feet below the low steel. Crews are working 7:00 a.m. until 5:00 p.m., Monday through Friday, starting on the left descending land span. Mariners are cautioned to transit with care.

LNM: OB

MILE 42.6 - BRIDGE MAINTENANCE

Jennings Randolph Bridge; The vertical clearance is reduced to 70 feet above normal pool due to a cable-supported containment 5 feet below the low steel. A work crew is cleaning and painting the structure. Contact the work supervisor at cell (330) 503-6249 or (330) 503-6482, for status.

MILE 42.6 - BRIDGE MAINTENANCE

LNM: OB

MILE 129.6 - MILE 129.9 - DREDGE OPERATION

Commencing approximately August 7, 2009 and continuing until approximately August 9, 2009, C & C Marine will conduct dredging operations between approximate Miles 129.6 And 129.9, LDB, Chemical Lime Company. The contractors floating plant will consist of the M/V ROCKET, a crane barge and 2 material barges. Work will be conducted from 7:00 a.m. until 7:00 p.m., each day. Dredged material will be transported to the Monongahela River Mile 38.9, LDB, for upland disposal. During non-working hours the contractors floating plant will be moored at the work-site and lighted accordingly. The M/V ROCKET will monitor VHF-FM Channels 13 or 16. Mariners are urged to exercise caution in the area.

LNM: ACOE

MILE 184.5 - DREDGE OPERATION

Commencing approximately August 10, 2009 and continuing until approximately December 31, 2009, Madison Coal and Supply will conduct core drilling in the vicinity of Mile 184.5, LDB, Parkersburg River Front Park. The contractors floating plant will consist of the M/V LADY LOIS, 2 crane barges and up to 5 material barges. Work will be conducted from 7:00 a.m. until 5:00 p.m., Monday through Saturday. During non-working hours, the contractors floating plant will be moored at the worksite and lighted accordingly. The M/V LADY LOIS will monitor VHF-FM Channels 13 or 16. Mariners are urged to transit the area at their slowest safe speed to minimize their wake and to proceed with caution after passing arrangements have been made.

LNM: ACOE

MILE 215.5 - MOORING CELL CONSTRUCTION

Continuing until approximately August 15, 2009, Southern Marine Construction will construct mooring cells in the vicinity of Mile 215.5, RDB, Shelly Materials Facility. The contractors floating plant will consist of the M/V LITTLE GIANT, a crane barge and a deck barge. Work will be conducted from 7:00 a.m. until 6:00 p.m., Monday through Friday. During non-working hours, the contractors floating plant will be moored at the worksite and light accordingly. The M/V LITTLE GIANT will monitor VHF-FM Channel 13. Mariners are urged to use caution in the area.

LNM: ACOE

MILE 236.0 - CORE DRILLING - UPDATE

Continuing until approximately August 27, 2009, Madison Coal and Supply will conduct core drilling in the vicinity of Mile 236.0, RDB. The contractors floating plant will consist of the M/V LADY LOIS and a crane barge. Work will be conducted from 7:00 a.m. until 5:00 p.m., Monday through Saturday. During non-working hours, the contractors floating plant will be moored at the worksite and lighted accordingly. The M/V LADY LOIS will monitor VHF-FM Channels 13 or 16. Mariners are urged to exercise caution in the area.

LNM: ACOE

MILE 341.0 - L/D CLOSURE

Continuing until approximately August 21, 2009, the Greenup L/D (auxiliary chamber), vicinity of Mile 341.0, will be closed for inspections. All traffic will be passed through the main chamber.

LNM: ACOE

MILE 610.0 - DREDGE OPERATION

Continuing until approximately September 30, 2009, Duke Energy is conducting dredging operations in the vicinity of Mile 610.0, RDB, Gallagher Power Plant. Work will be conducted during daylight hours, Monday through Friday. The contractors floating plant will consist of a small work boat, a clamshell dredge and/or a long reach backhoe. The floating plant will monitor VHF-FM Channel 69. During non-working hours, the contractors floating plant will be moored next to the intake channel. Mariners are urged to exercise caution when transiting the area.

LNM: ACOE

MILE 846.0 - L/D CLOSURE

Continuing until approximately August 27, 2009, the J.T. Myers L/D (auxiliary 600-foot chamber) will be closed for repairs. Traffic will be passed through the main (1,200-foot chamber), during this closure.

LNM: ACOE

MILE 858.4 - MOORING CELL CONSTRUCTION

Continuing until approximately October 30, 2009, Aquarius Marine Incorporated is constructing 2 sheet pile mooring cells in the vicinity of Mile 858.4, RDB, Shawneetown Port District. Work will be conducted from 7:30 a.m. until 6:00 p.m., Monday through Friday. The contractors floating plant will consist of the M/V ALANA PAIGE, a crane barge and 2 material barges. The M/V ALANA PAIGE will monitor VHF-FM Channels 13 or 16. During non-working hours, the contractors floating plant will be moored at the work-site. Mariners are urged to exercise caution when transiting the area.

LNM: 0396OV

MILE 952.2 - DREDGE OPERATION

Continuing until approximately August 11, 2009, Industrial Environmental Incorporated is conducting dredge operations in the vicinity of Mile 952.2, RDB, Joppa, Illinois. The contractors floating plant consists of a small work boat and a hydraulic dredge. Work will be conducted from 6:00 a.m. until 6:00 p.m., Monday through Friday. During non working hours the contractors floating plant will be moored next to the mooring cells. Mariners are urged to exercise caution when transiting the area.

LNM: ACOE

OUACHITA-BLACK WATERWAY

**OUACHITA-BLACK WATERWAY
MILE 191.8 - BRIDGE DEMOLITION - UPDATE**

Sterlington Highway Bridge; The swing span is scheduled to be maintained in the open-to-navigation position and remain open while the span is being demolished. The left descending channel will be clear of debris for vessel navigation. Work crews will be removing decking and steel truss members by mechanical means from 7:00 a.m. until 6:00 p.m., daily. Material and crane barges are located in the right descending channel. Contact M/V KARL R via VHF-FM Channel 16 or Supervisor at cell (918) 629-2799, for status.

LNM: OB

MILE 168.0 - UNSTABLE BUILDING

The U.S. Coast Guard has received a report of unstable buildings along the shoreline in the vicinity of Mile 168.0, LDB. Mariners are urged to exercise caution when transiting the area.

LNM: 0246LM

MILE 167.5 - BRIDGE FENDER DAMAGE

State Highway 80 Drawbridge; The upstream left descending fendering timbers are damaged. Mariners are cautioned to avoid causing any further damage to the structure when transiting the drawspan. The channel is clear of any debris.

LNM: OB

MILE 40.9 - BRIDGE DEMOLITION - UPDATE

Jonesville Drawbridge; The main navigation span has been removed and cleared from the channel. Piers remain and are scheduled for demolition at a later date. Contact the BTB 0518 via VHF-FM Channels 6 or 16, for more information.

LNM: OB

MILE 25.0 - DREDGE OPERATION

Continuing until further notice, the Dredge BUTCHER is operating in the vicinity of Mile 25.0, Jonesville L/D. The Dredge BUTCHER will monitor VHF-FM Channels 11 or 16, for passing arrangements. Mariners are urged to exercise caution when transiting the area.

LNM: 0269LM

RED RIVER

MILE 222.5 - BRIDGE MAINTENANCE

LA 511 (Jimmie Davis) Highway Bridge; The vertical clearance is reduced to 71 feet above normal pool, due to a platform apparatus extending 10 feet below the low steel of the channel span. Work crews are cleaning and painting floor stringers until August 12, 2009. Contact the work supervisor on cell (469) 426-4187, for status.

LNM: OB

MILE 168.0 - DREDGE OPERATION

Continuing until further notice, the Dredge BUTCHER is operating in the vicinity of Mile 168.0. The Dredge BUTCHER will monitor VHF-FM Channels 11 or 16, for passing arrangements. Mariners are urged to exercise caution when transiting the area.

LNM: 0261LM

MILE 154.0 - DREDGE OPERATION - UPDATE

The Dredge BUTCHER has completed operations in the vicinity of Mile 152.0.

LNM: 0231LM

TENNESSEE-TOMBIGBEE WATERWAY

MILE 49.0 - MILE 46.0 - MOORING DOLPHIN CONSTRUCTION

Continuing until approximately August 21, 2009, mooring dolphins will be installed between approximate Miles 49.0 and 46.0, ThyssenKrupp Still Mill. The contractors floating plant will consist of the M/V SCOTT BRIDGE and a crane barge. Work will be conducted during daylight hours. The M/V SCOTT BRIDGE will monitor VHF-FM Channels 16 or 19. No significant delays are anticipated for navigation of the area. Mariners are urged to transit the area with caution.

LNM: MOBILE

TENNESSEE RIVER

MILE 306.5 - CORE DRILLING

Continuing until approximately August 10, 2009, Hull Drilling and Testing will conduct core drilling activities in the vicinity of Mile 306.5, LDB. The contractors floating plant will consist of a barge mounted drill rig. Work will be conducted from 7:00 a.m. until 5:00 p.m., Monday through Friday. During non-working hours, the contractors floating plant will be moored along the bank, outside of the navigation channel. Mariners are urged to transit the area at their slowest safe speed to minimize their wake and exercise caution when transiting the area.

LNM: ACOE

MILE 259.4 - L/D CLOSURE

Continuing until approximately August 12, 2009, the Wilson L/D (main chamber) vicinity of Mile 259.4, will be closed for maintenance. Attached at the end of this LNM, is ACOE Nashville District Notice to Navigation Interests 09-18 regarding this closure and providing specific instructions.

LNM: ACOE

MILE 160.7 - CORE DRILLING

MILE 160.7 - CORE DRILLING

Continuing until approximately August 14, 2009, Hull Drilling and Testing will conduct core drilling activities in the vicinity of Mile 160.7, LDB. The contractors floating plant will consist of a barge mounted drill rig. Work will be conducted from 8:00 a.m. until 5:00 p.m., Monday through Saturday. During non-working hours, the contractors floating plant will be moored along the bank, outside of the navigation channel. Mariners are urged to transit the area at their slowest safe speed to minimize their wake and exercise caution when transiting the area.

LNM: ACOE

MILE 67.0 - MILITARY EXERCISE

On September 1, 2009 and again on September 10, 2009, from 8:00 a.m. until 1:00 p.m., each day, the U.S. Army will conduct aerial assault training exercises in the vicinity of Mile 67.0, Paris Landing State Park. The exercises will involve parachuting into the area from helicopters and inflatable boats. Mariners transiting the area, during the exercises should expect to see low flying aircraft. Mariners are urged to exercise caution in the area and to be alert for small boats and personnel in the water.

LNM: ACOE

MILE 5.7 - BRIDGE REPLACEMENT

George Rogers Clark Bridge Replacement: Pier construction within a cofferdam is being performed 400 feet from the left descending bank. Work is conducted from 6:00 a.m. until 6:00 p.m., Monday through Friday, and 6:00 a.m. until 2:00 p.m., Saturday. The work aligns with the pier of the existing bridge, approximately 2,000 feet downstream of the work site. Mariners are requested to use caution when transiting the site. Contact the M/V ANDREW J on VHF-FM Channels 13 or 16.

LNM: OB

WHITE RIVER

MILE 2.0 - AIDS TO NAVIGATION

A nun dike buoy has been reported not properly marking the channel in the vicinity of Mile 2.0. Mariners are urged to use extreme caution in this area.

LNM: 0201LM

SECTION VIII - LIGHT LIST CORRECTIONS

An Asterisk *, indicates the column in which a correction has been made to new information

(1) No.	(2) Name and Location	(3) Mile	(4) Bank	(5) Characteristic	(6) Structure / Dayboard Up Down		(7) Remarks
29225	Blenheim Daybeacon						Remove from list. 30/09 *
29227	Bare Point Daybeacon						Remove from list. 30/09 *
29228	Lucas Bend Daybeacon						Remove from list. 30/09 *
29229	Rothschild Daybeacon						Remove from list. 30/09 *
29287	BOYCE LAKE LIGHT	106.6	Right	Fl G 4s	SG	SG	30/09
*	*	*	*	*	*	*	*

ENCLOSURES

BRIDGE MAPS AND PLANS

Proposed bridge Little Maumelle River (Arkansas River), 3 pages.

LNM: OB

ACOE NOTICE TO NAVIGATION INTERESTS

Schedule of events for the Oak Ridge Rowing Association.

LNM: ACOE

ACOE Navigation Notice

2009 Annual Navigation Conference.

LNM: ACOE

Commander, Eighth Coast Guard District
Hale Boggs Federal Building, Room 1230
500 Poydras Street, New Orleans, LA 70130-3310
Telephone (504) 671-2327
(Business Hours 7:00 a.m. - 3:30 p.m. Monday - Friday)
(Nights, Weekends, Holidays) (504) 589-6225
RADM Landry

Navigation Notice

McClellan-Kerr Arkansas River Navigation System



US Army Corps
of Engineers.

Navigation Notice Number:

TD 2009 - 04

Date:

6 July 2009

In Reply Refer to:

CESWT-OD

Tulsa District

1645 S. 101st E. Ave.

Tulsa, OK 74128-4629

2009 ANNUAL NAVIGATION CONFERENCE McCLELLAN-KERR ARKANSAS RIVER NAVIGATION SYSTEM

You are invited to the 2009 Annual Navigation Conference for the McClellan-Kerr Arkansas River Navigation System that will be held August 27 & 28 at the River Center – Three Forks Harbor, Muskogee, Oklahoma.

A Registration Form and tentative agenda for the Navigation Conference are attached. The \$65.00 registration fee covers all meetings and materials as well as the continental breakfast and closing luncheon that includes the Arkansas River Historical Society's Hall of Fame Induction Ceremony on August 28, and coffee/refreshment breaks throughout. A hosted reception will be held on the evening of August 27. Your spouse or guest is welcome to attend the hosted reception on August 27 and the continental breakfast and closing luncheon on August 28 for a fee of \$35.00. ***Please register all attendees by August 10, 2009.***

Since all of the meetings will be held at the River Center at Three Forks Harbor, you may select your hotel accommodations from any of the several, competitively priced hotels located conveniently near Three Forks Harbor. A location map with hotel contact information is attached hereto.

If you have any questions concerning this year's Navigation Conference, please call Amanda Peters at (918) 669-4903 or Cindy Green at (918) 266-2291.

A handwritten signature in black ink that reads "Earl D. Groves".

EARL D. GROVES
Chief, Operations Division

Encl

**2009 ANNUAL NAVIGATION CONFERENCE
McCLELLAN-KERR ARKANSAS RIVER NAVIGATION SYSTEM**

Activities and Meeting Schedule

August 27	De-Water Site Visit – Lock 18 (On your own)	10:30 a.m. – Noon
-----------	--	-------------------

River Center / Three Forks Harbor, Muskogee, OK

Registration Desk Opens	10:00 a.m.
AOPOA Board Meeting	Noon - 1:15 p.m.
AOPOA Membership Meeting	1:30 p.m. – 5:00 p.m.
Reception – River Center, Three Forks Harbor	5:30 p.m. – 7:00 p.m.

August 28

River Center / Three Forks Harbor, Muskogee, OK

Registration Desk Opens	7:15 a.m.
Navigation Conference	8:00 a.m. – 11:30 a.m.
Luncheon Arkansas River Historical Society Hall of Fame Induction Ceremony Keynote Speaker	Noon
Adjournment	1:00 p.m.

39th ANNUAL NAVIGATION CONFERENCE

McClellan-Kerr Arkansas River Navigation System

AOPOA/U.S. Army Corps of Engineers

Three Forks Harbor, Muskogee, OK

August 27 & 28, 2009



US Army Corps
of Engineers.

August 27th

De-water Site Visit

10:30 – 12:00 Site Visit – Lock 18

12:00 – 2:00 Lunch on your own

AOPOA Meetings

10:00 Registration Desk Opens – River Center, Three Forks Harbor

12:00 – 1:15 AOPOA Annual Board Meeting – River Center, Three Forks Harbor

1:30 – 5:00 AOPOA Membership Meeting – River Center, Three Forks Harbor

Reception

5:30 – 7:00 Reception – River Center, Three Forks Harbor

August 28th

NAVIGATION CONFERENCE – Three Forks Harbor

7:15 Registration Desk Opens – Pre-Function Area

8:00 Welcome and Opening Remarks – Earl Groves, Chief of Operations,
USACE Tulsa District

GOVERNMENT AGENCIES PANEL – NAVIGATION CONDITIONS - Earl Groves, USACE Tulsa District, Moderator

8:05 McClellan-Kerr Arkansas River Navigation System Update --
COL Anthony Funkhouser, USACE Tulsa District Engineer
COL Donald Jackson, Jr., USACE Little Rock District Engineer

8:35 Questions & Answers

8:40 Commander's Perspective – Lower Mississippi River Sector –
Captain Michael Gardiner, Coast Guard Sector Lower Mississippi River

8:55 Questions & Answers

9:00 Stimulus Projects --
Johnny Bell, Chief Technical Support Branch, USACE Tulsa District

9:15 Questions & Answers

- 9:20 Lockage Fee Proposal --
Norb Whitlock, Ex. V.P. Operations, American Commercial Barge Lines
- 9:40 Questions & Answers
- 9:45 Break
- 9:55 Marine Highway Corridors
Jim Pugh, U. S. MARAD, Office of Marine Highways
- 10:10 Questions & Answers
- 10:15 Current Shipping Activities and Trends
John Janoush, Jantran, Inc., Rosedale, MS
Terrence M. "Terry" Moore, Director of Business Development,
AEP Barge Line
Janice Luchan, Regional Sales Director – St. Louis, American
Commercial Barge Lines
- 10:45 Questions & Answers
- 10:50 Waterway Marketing Initiative
Robert M. "Bobby" Landry, Director of Marketing, Port of New Orleans
Robert W. "Bob" Portiss, Port Director, Tulsa Port of Catoosa
- 11:20 Questions & Answers

NAVIGATION CONFERENCE LUNCHEON

- 12:00 Welcome and Opening Remarks – Terry McDonald, President, Arkansas-
Oklahoma Port Operators Association
- 12:15 Arkansas River Historical Society Hall of Fame Induction Ceremonies
Randy Tardy, President
- 12:30 Keynote Speaker -- TBD
- 1:00 Adjourn Conference

2009 ANNUAL NAVIGATION CONFERENCE

McClellan-Kerr Arkansas River Navigation System
AOPOA/U.S. Army Corps of Engineers
River Center – Three Forks Harbor, Muskogee, OK
August 27 & 28, 2009

**PLEASE SEND IN YOUR
REGISTRATION BY NO
LATER THAN AUGUST 10!**

Registration Form

Your Name (As you want it to appear on Name Tag) _____

Your Company/Organization _____

Spouse/Guest Name (First and last as it should appear on Name Tag) _____

Spouse/Guest Company/Organization _____
(If you would like it to appear on Name Tag.)

Your Telephone Number (_____) _____ Fax Number (_____) _____

Your Address: _____
(P. O. Box or Street) (City) (State) (Zip)

Registration Fees:

	Quantity	Total
Conference Participants – All events <i>(Includes all Navigation Conference related meetings and materials, Continental breakfast, closing luncheon and coffee / refreshment breaks throughout.)</i>	\$65.00 x _____	= _____
Spouse/Guest <i>(Includes continental breakfast & closing luncheon.)</i>	\$35.00 x _____	= _____
	TOTAL PAID	= _____

Make Checks Payable to: *AOPOA and please register by August 10, 2009.*

Mail or Fax: Ms. Cindy Green
or E-Mail to: Tulsa Port of Catoosa
5350 Cimarron Road
Catoosa, OK 74015
Fax Number: (918) 266-7678
E-mail: cindy@tulsaport.com

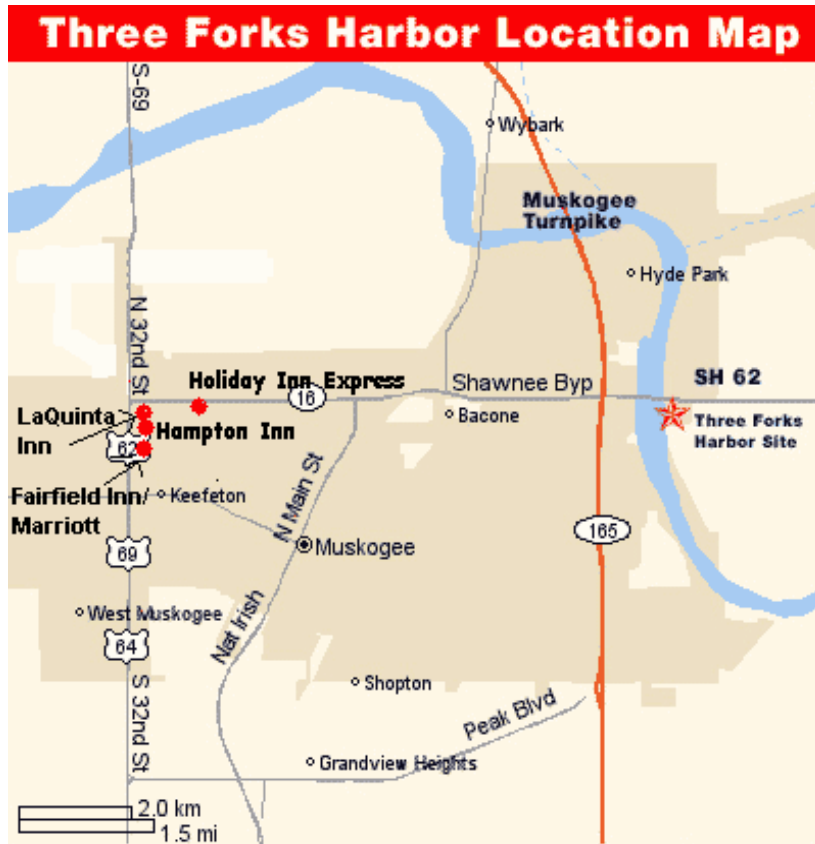
NOTE: If you register for the meeting, you acknowledge that you are responsible for all appropriate registration fee(s). Cancellation notice must be received by noon, August 17, 2009, to qualify for reimbursement of the registration fee. **If you do not cancel your registration, and have not paid your registration fee in advance of the meeting, you will be billed accordingly.** Please contact Ms. Cindy Green at (918) 266-2291 regarding cancellations.

If you have questions concerning the Navigation Conference, please call Ms. Cindy Green at the above number or Ms. Amanda Peters at (918) 669-4903.

See attached sheet for Three Forks Harbor location with map, driving directions and area hotels contact information.

2009 ANNUAL NAVIGATION CONFERENCE

McClellan-Kerr Arkansas River Navigation System
AOPOA/U.S. Army Corps of Engineers
River Center – Three Forks Harbor, Muskogee, OK
August 27 & 28, 2009



AREA HOTELS

LaQuinta Inn

Rate: \$89.00 + tax - King or Dble Queen
Block Name: Navigation Conference
Cut-off Date: Aug. 6
3031 Military Blvd.
Muskogee, OK 74401
Ph. 1-918-687-9000
(Newly renovated rooms; restaurant, bar & lounge on-site; fitness center; pool; internet; continental breakfast)

Hampton Inn

Rate: \$109.00 + tax (Standard)
\$ 90.00 + tax (Gov.)
3100 Military Blvd.
Muskogee, OK 74401
Ph. 1-918-682-2587
(Internet; pool; fitness center; continental breakfast)

Holiday Inn Express

Rate: \$95.96 + tax (Standard & Gov. Rate)
2701 W. Shawnee St.
Muskogee, OK 74401
Ph. 1-918-687-4224
(Internet; pool; fitness center; continental breakfast)

Driving Directions to Three Forks Harbor

From Tulsa:

South on Muskogee Turnpike to Highway 62 East exit in Muskogee. Take the first right after crossing the river bridge.

From Tulsa:

South on Muskogee Turnpike to Highway 62 East exit in Muskogee. Take the first right after crossing the river bridge.

From Oklahoma City:

I-40 East to US 69 North, East on Peak Boulevard to Muskogee Turnpike, North to Highway 62 East exit. Take first right after crossing the river bridge.

From Ft. Smith:

I-40 West to Muskogee Turnpike, North to Highway 62 East exit. Take first right after crossing the river bridge.

From Tahlequah & Ft. Gibson:

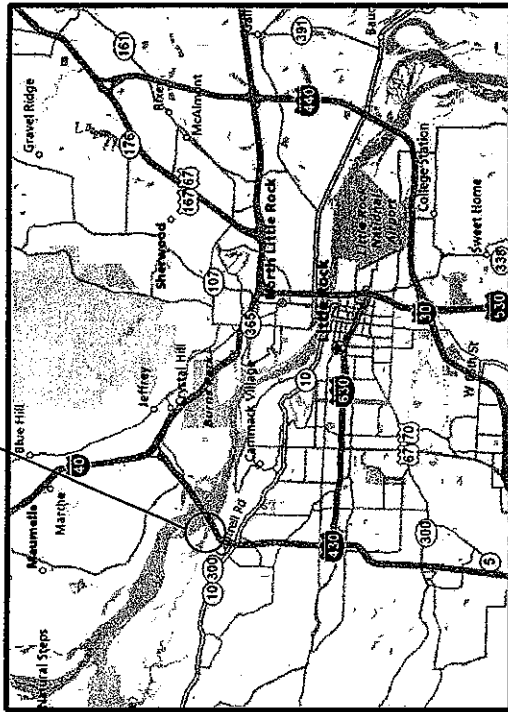
Highway 62 West, take first right after intersection with old Highway 62 (Cherokee Outpost). Follow paved road under railroad overpass, turn right onto entrance road.

Fairfield Inn & Suites

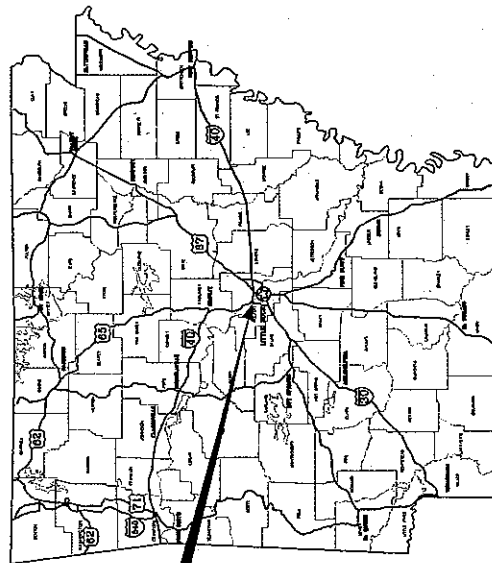
Rate: (Not available at time of printing)
1650 North 32nd St.
Muskogee, OK 74401
Ph. 1-918-683-6700

★ *(New Facility – Opening July 2009)*

PROJECT LOCATION

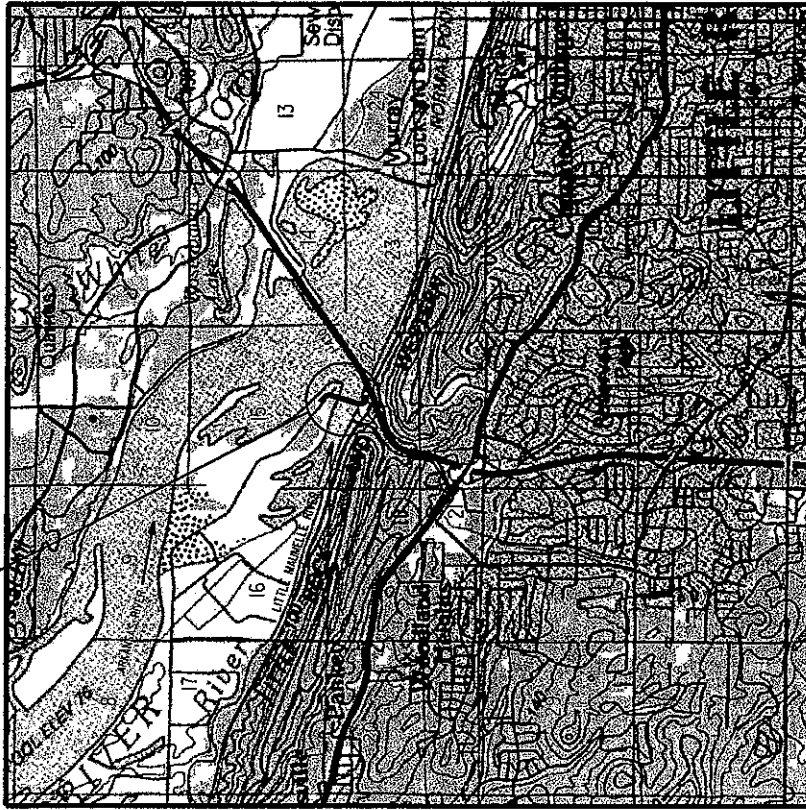


VICINITY MAP



STATE MAP

PROJECT LOCATION

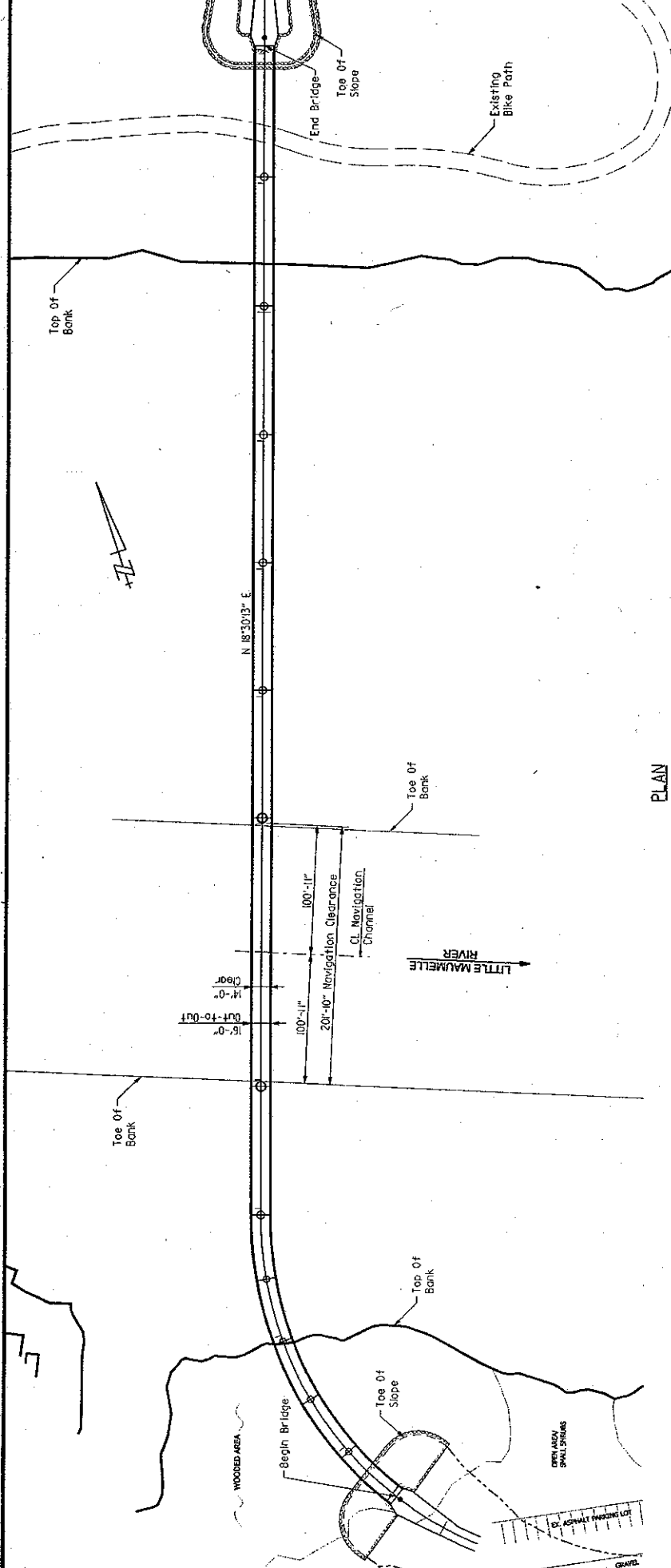


PROJECT LOCATION MAP

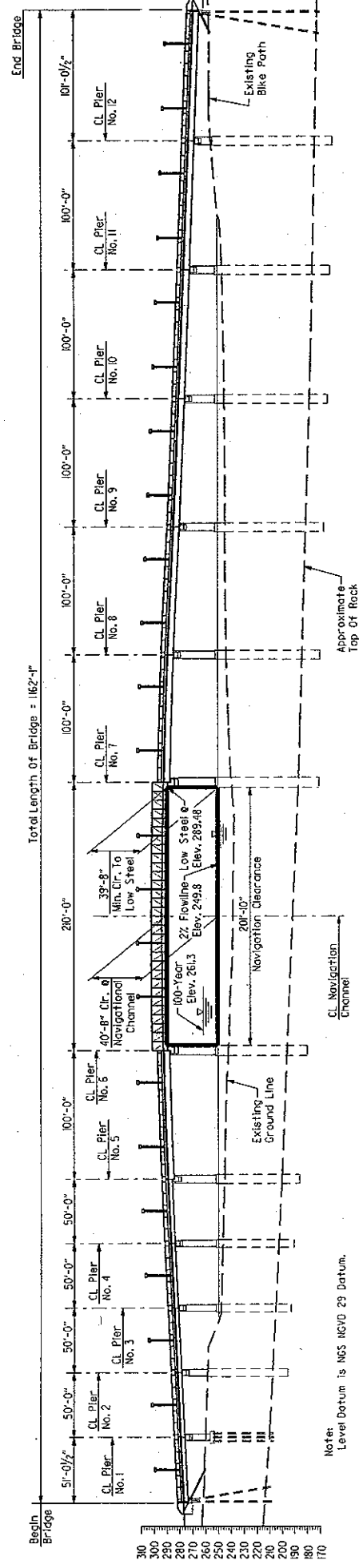
PULASKI COUNTY PUBLIC WORKS DEPARTMENT
 LITTLE MAUELLE PEDESTRIAN BRIDGE
 LITTLE MAUELLE RIVER, MILE 0.6
 PULASKI COUNTY
 STATE OF ARKANSAS

APPLICATION BY:
 PULASKI COUNTY PUBLIC WORKS DEPARTMENT
 PEDESTRIAN BRIDGE
 SHEET 1 OF 3

SECTION NO. - - -
 DATE: OCT. 2008



PLAN



ELEVATION

PULASKI COUNTY PUBLIC WORKS DEPARTMENT
 LITTLE MAUMELLE PEDESTRIAN BRIDGE
 LITTLE MAUMELLE RIVER, MILE 0.6
 PULASKI COUNTY
 STATE OF ARKANSAS

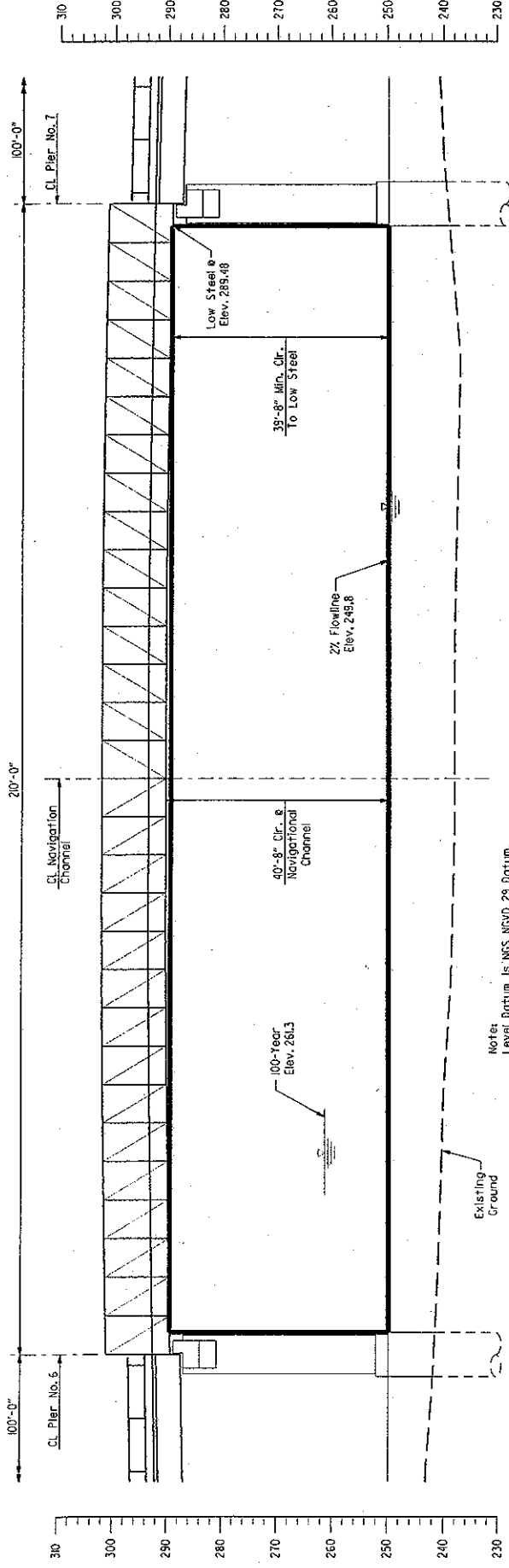
APPLICATION BY:
 PULASKI COUNTY PUBLIC WORKS DEPARTMENT
 PEDESTRIAN BRIDGE
 SHEET 2 OF 3

SECTION NO. -
 DATE: OCT. 2008

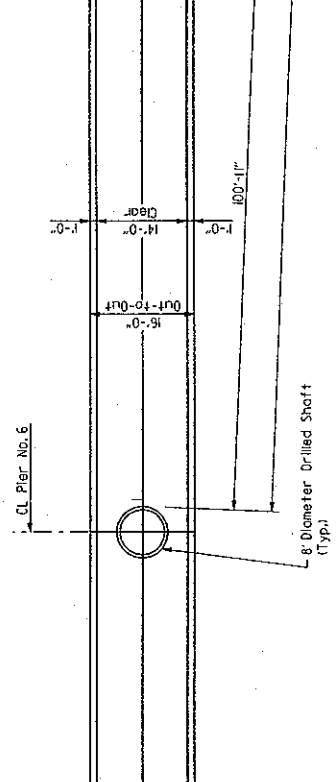


Note: Level Datum is NGS NOVD 29 Datum.

Total Length of Bridge = 1162'-1"



ELEVATION



PLAN

PULASKI COUNTY PUBLIC WORKS DEPARTMENT
 LITTLE MAUMELLE PEDESTRIAN BRIDGE
 LITTLE MAUMELLE RIVER, MILE 0.6
 PULASKI COUNTY
 STATE OF ARKANSAS

APPLICATION BY:
 PULASKI COUNTY PUBLIC WORKS DEPARTMENT
 PEDESTRIAN BRIDGE
 SHEET 3 OF 3

SECTION NO.
 DATE: OCT. 2008

SCALE: 1" = 30'



**US Army Corps
of Engineers®
Nashville District**

Notice to Navigation Interests

Notice No.

Date: March 4, 2009

CELRN-OP—N 09-08

In Reply Refer To:

CELRN-OP-N PO Box 1070, Nashville, TN 37072-1070 (615) 736-5607

**SUBJECT: Oak Ridge Rowing Association's Schedule of Events for 2009, Clinch River
Miles 49.0-51.1**

Listed below is the 2009 schedule for the subject associations rowing events.

March 28-29 and April 4-5 – Lane cables begin to go in.

April 18-19 – Southeast Intercollegiate Rowing Association "SIRA" Regional Championship

April 20 – Atlantic Coast Conference Women's Rowing Championship

April 25-26 – Oak Ridge Dogwood Regatta

May 9-10 – Southeast Regional Youth Championships

May 16-17 – South/Central Sprints

May 30-31 – US Rowing Women's National Team – Training Camp

June 6-7 – US Rowing Women's National Team – Training Camp

June 27-28 – Festival on the Lake

July 15-19 – US Rowing Club National Championship

August 1 – Oak Ridge Sprints

August 19-22 – USACK National Championship


October 3 – Secret City Head Race

October 31 – Head of the Tennessee

All vessels that are scheduled to be in this area during these time periods should contact the Oak Ridge Rowing Association at 865-482-6538 at least 48 hours in advance so the club may accommodate passage.

During these events, there will be boats located along the course to direct traffic. Operators on all vessels are urged to exercise extreme caution when transiting this reach or adjust their schedules to avoid this area during these events. For instructions and answers to event related questions you can contact Ms Jane Gibson at 865-425-3441 or at jgibson@corn.org. Also you can go to the Oak Ridge Rowing Association's website, www.orra.org.

FOR THE DISTRICT ENGINEER:


JEFFREY D. ROSS
Chief, Navigation Branch
Operations Division