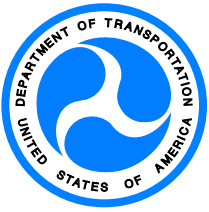


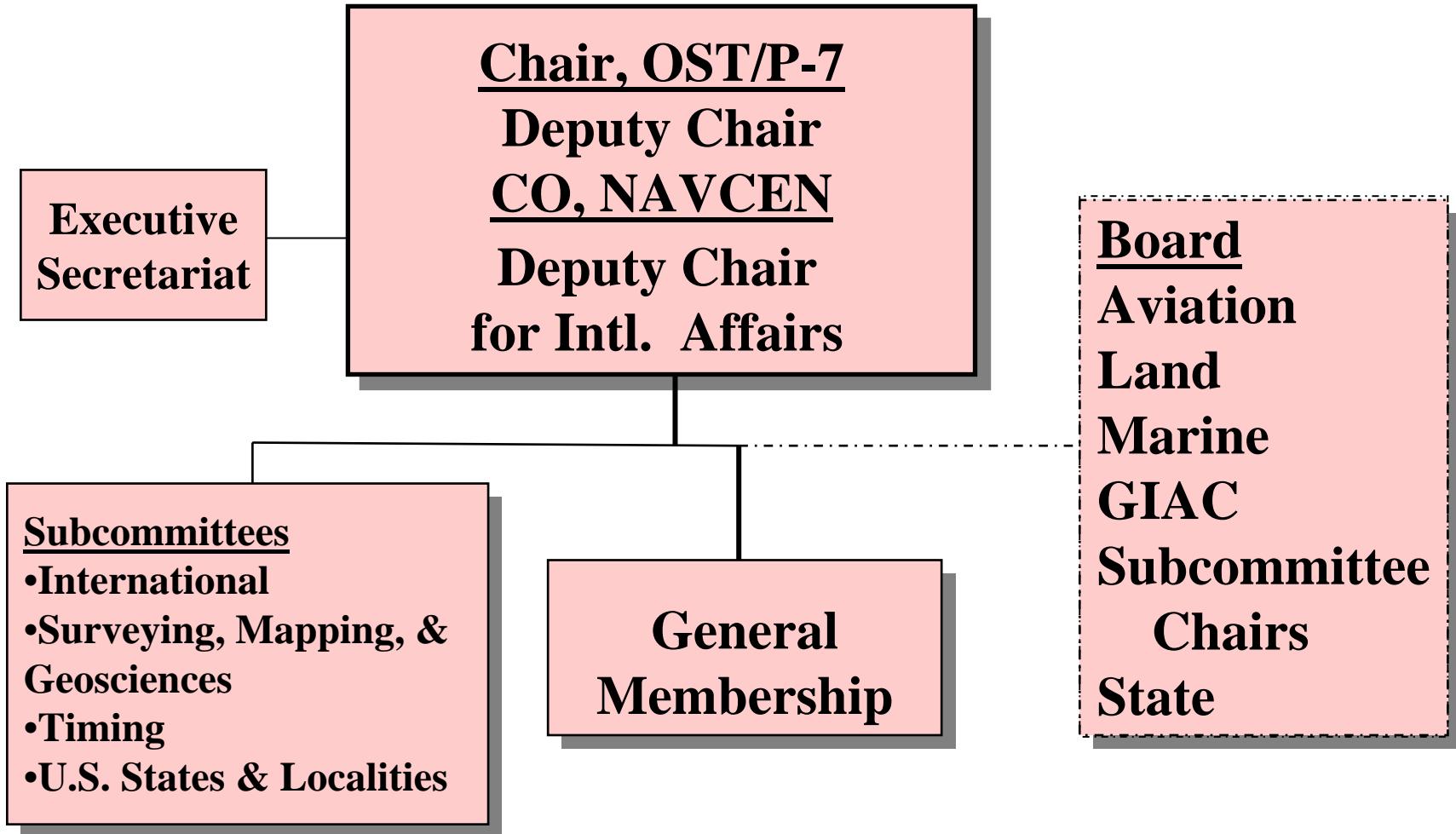
Civil GPS Service Interface Committee

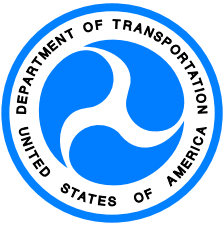
46th Meeting
Fort Worth, Texas

Welcome!



CGSIC Structure



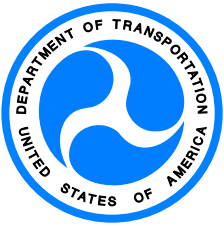


Committee Officials



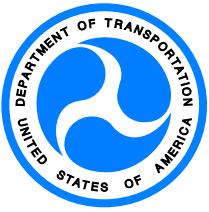
- ★ Chair- John Augustine, OST, acting
- Deputy Chair- CAPT Matthew Blizzard
- Intl Deputy Chair- John Wilde
- Executive Secretariat- Rebecca Casswell

- ◆ Air- Dave Olsen
- ❄ Land- Jim Arnold
- ☞ Marine- CDR John Merrill
- State- vacant



Subcommittee Officials

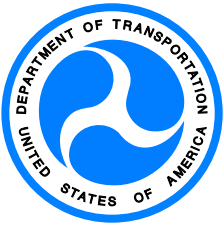
- International Chair- Terry Moore
 - Asian Regional Vice-Chair- Hiroshi Nishiguchi
 - Australasia Regional Vice-Chair- Keith McPherson
 - European Regional Vice-Chair- Georg Weber
 - Americas Regional Vice-Chair- Mike Swiek, acting
- Timing Chair- Wlodzimierz Lewandowski
 - Co-Chair- Victor Zhang
- U.S. States and Localities Chair- Rudy Persaud
 - Co-Chair- DeLane Meier
 - Secretary- Mark Cheves
- Surveying, Mapping, and Geosciences Subcommittee-
Richard Snay



Notes



- Tuesday a.m. -Voting for International Subcommittee Chair
- Complete CGSIC Questionnaire
- Provide input on this meeting on Comment Sheets



Miscellaneous Admin

- ✓ Presentations will be posted on the website

- ✓ Use the microphone for Q&As
 - Ask questions
 - Express your opinion

But use the microphone!

- ✓ Take sidebar discussions outside the room
- ✓ Turn off Cell phone ringers/use courtesy mode